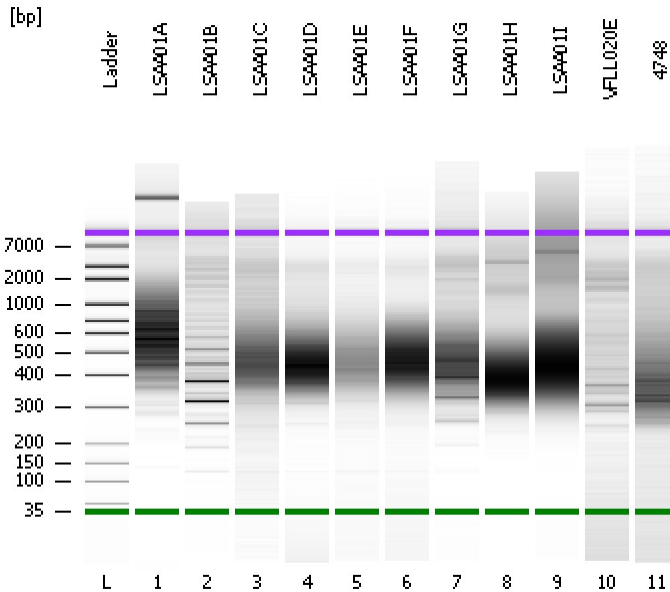


Assay Class: High Sensitivity DNA Assay
Data Path: C:\...ents and Settings\Bioanalyzer\2013-07-22\2013-07-22_002.xad

Created: 7/22/2013 3:08:45 PM
Modified: 7/22/2013 3:49:15 PM

Electrophoresis File Run Summary



Instrument Information:

Instrument Name: DE13701086 Firmware: C.01.069
Serial#: DE13701086 Type: G2938B

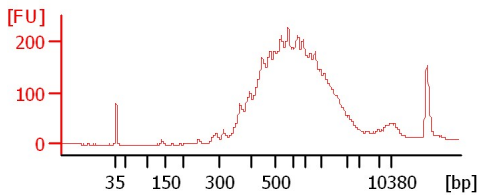
Assay Information:

Assay Origin Path: C:\Program Files\Agilent\2100 bioanalyzer\2100 expert\assays\dsDNA\High Sensitivity DNA.xsy
Assay Class: High Sensitivity DNA Assay
Version: 1.03
Assay Comments: Copyright © 2003-2010 Agilent Technologies

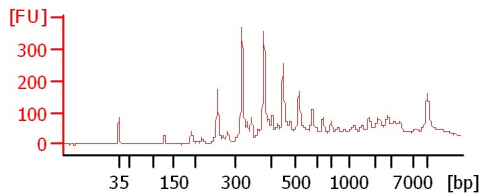
Chip Information:

Chip Lot #:
Reagent Kit Lot #:
Chip Comments:

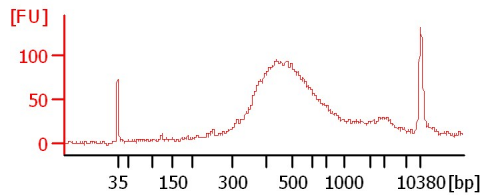
LSAA01A



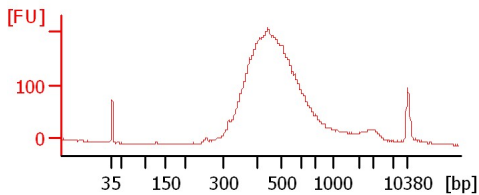
LSAA01B



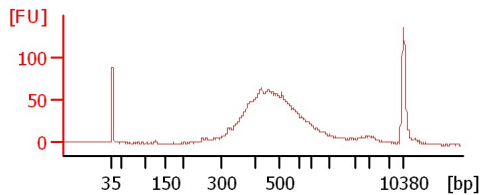
LSAA01C



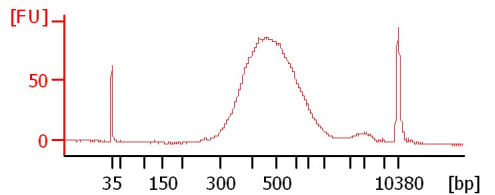
LSAA01D



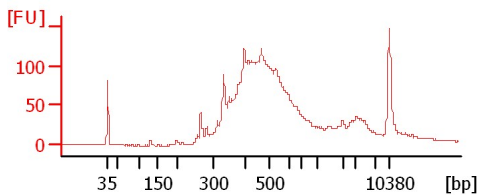
LSAA01E



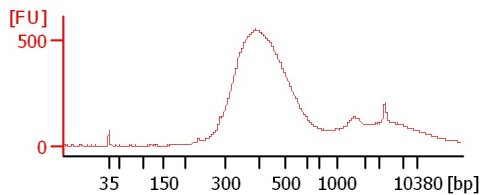
LSAA01F



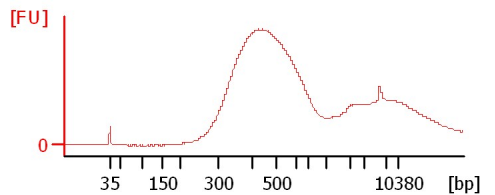
LSAA01G



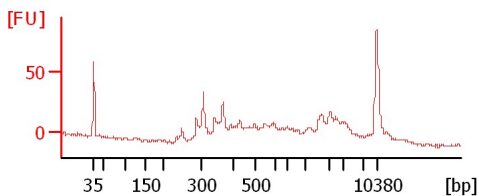
LSAA01H



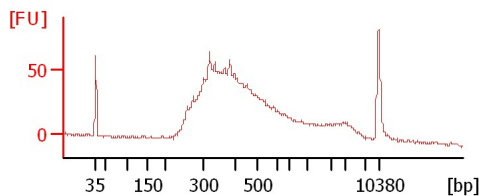
LSAA01I



VFLL020E



4748



Assay Class: High Sensitivity DNA Assay
Data Path: C:\...ents and Settings\Bioanalyzer\2013-07-22\2013-07-22_002.xad

Created: 7/22/2013 3:08:45 PM
Modified: 7/22/2013 3:49:15 PM

Electrophoresis File Run Summary (Chip Summary)

Sample Name	Sample Comment	Rest. Digest	Status	Observation	Result Label	Result Color
LSAA01A		<input type="checkbox"/>	✓			
LSAA01B		<input type="checkbox"/>	✓			
LSAA01C		<input type="checkbox"/>	✓			
LSAA01D		<input type="checkbox"/>	✓			
LSAA01E		<input type="checkbox"/>	✓			
LSAA01F		<input type="checkbox"/>	✓			
LSAA01G		<input type="checkbox"/>	✓			
LSAA01H		<input type="checkbox"/>	✓			
LSAA01I		<input type="checkbox"/>	✓			
VFLL020E		<input type="checkbox"/>	✓			
4748		<input type="checkbox"/>	✓			
Ladder		<input type="checkbox"/>	✓			

Chip Lot #

Reagent Kit Lot #

Chip Comments :

Assay Class: High Sensitivity DNA Assay
Data Path: C:\...ents and Settings\Bioanalyzer\2013-07-22\2013-07-22_002.xad

Created: 7/22/2013 3:08:45 PM
Modified: 7/22/2013 3:49:15 PM

Electrophoresis Assay Details

General Analysis Settings

Number of Available Sample and Ladder Wells (Max.) : 12
Minimum Visible Range [s] : 32
Maximum Visible Range [s] : 138
Start Analysis Time Range [s] : 33
End Analysis Time Range [s] : 137.5
Ladder Concentration [pg/μl] : 1950
Uses Standard Area for Ladder Fragments
Lower Marker Concentration [pg/μl] : 125
Upper Marker Concentration [pg/μl] : 75
Used Upper Marker for Quantitation
Standard Curve Fit is Point to Point
Show Data Aligned to Lower and Upper Marker

Integrator Settings

Integration Start Time [s] : 33.05
Integration End Time [s] : 137
Slope Threshold : 0.8
Height Threshold [FU] : 5
Area Threshold : 0.1
Width Threshold [s] : 0.6
Baseline Plateau [s] : 0.5

Filter Settings

Filter Width [s] : 0.5
Polynomial Order : 4

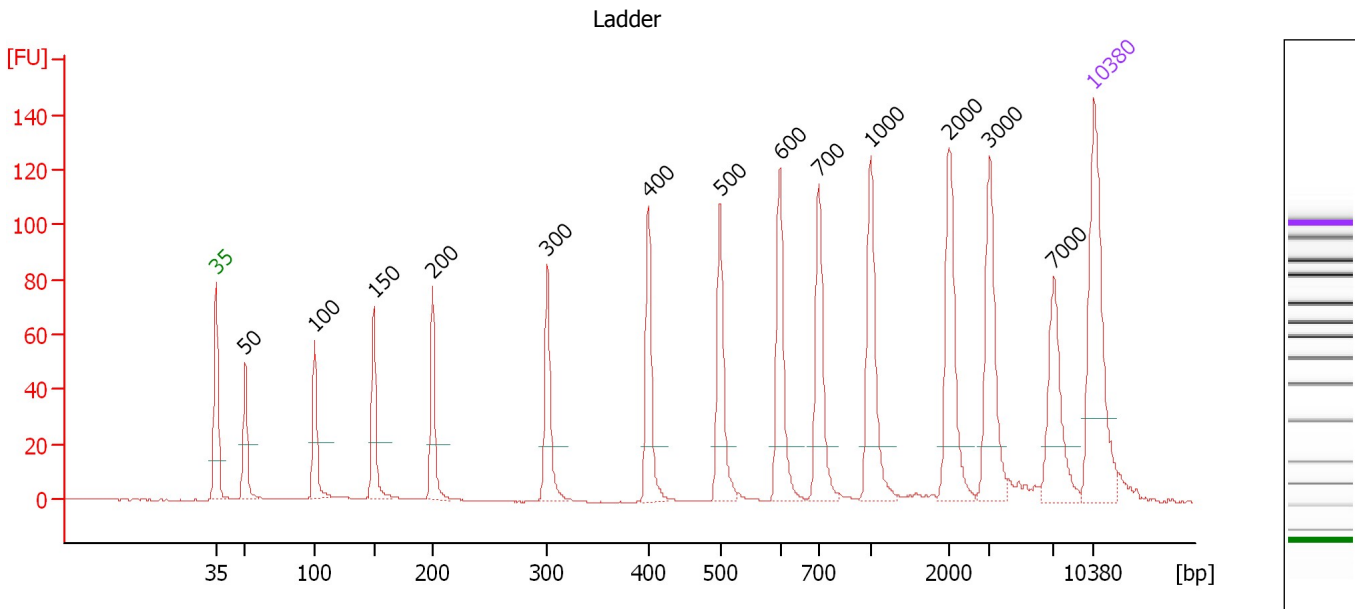
Ladder

Ladder Peak	Size	Area
1	35	160
2	50	210
3	100	208
4	150	221
5	200	242
6	300	270
7	400	305
8	500	306
9	600	336
10	700	321
11	1000	366
12	2000	413
13	3000	411
14	7000	400
15	10380	214

Assay Class: High Sensitivity DNA Assay
 Data Path: C:\...ents and Settings\Bioanalyzer\2013-07-22\2013-07-22_002.xad

Created: 7/22/2013 3:08:45 PM
 Modified: 7/22/2013 3:49:15 PM

Electropherogram Summary



Overall Results for Ladder

Noise: 0.2

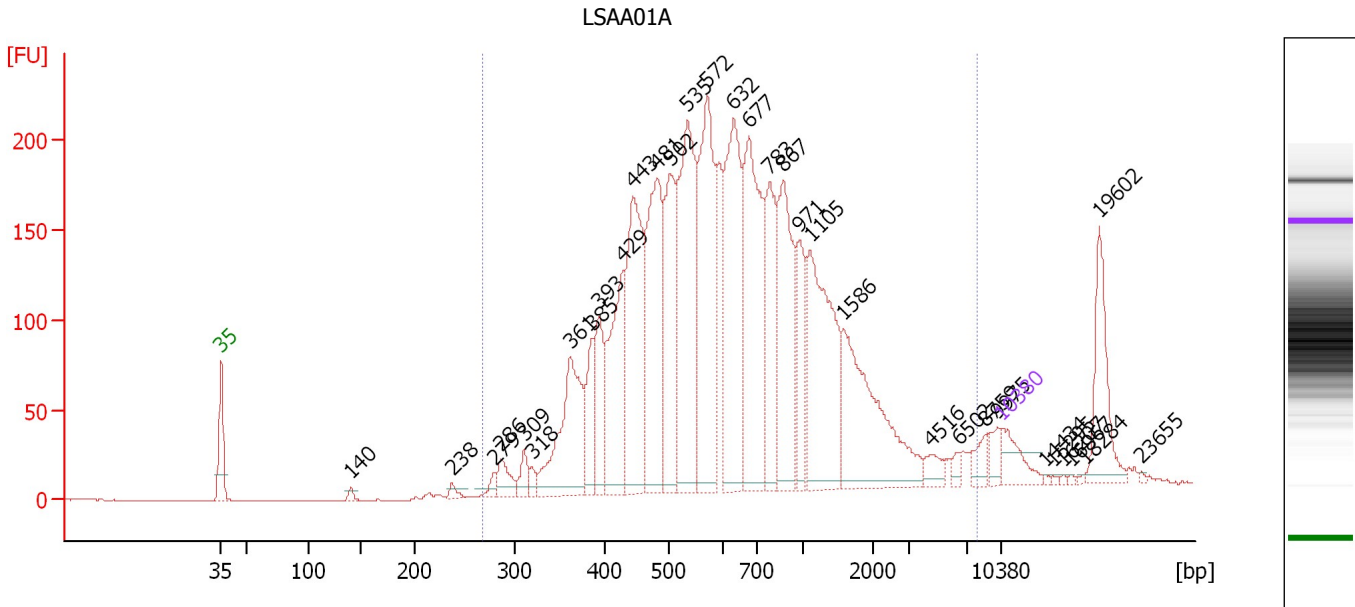
Peak table for Ladder

Peak	Size [bp]	Conc. [pg/μl]	Molarity [pmol/l]	Observations
1	35	125.00	5,411.3	Lower Marker
2	50	150.00	4,545.5	Ladder Peak
3	100	150.00	2,272.7	Ladder Peak
4	150	150.00	1,515.2	Ladder Peak
5	200	150.00	1,136.4	Ladder Peak
6	300	150.00	757.6	Ladder Peak
7	400	150.00	568.2	Ladder Peak
8	500	150.00	454.5	Ladder Peak
9	600	150.00	378.8	Ladder Peak
10	700	150.00	324.7	Ladder Peak
11	1,000	150.00	227.3	Ladder Peak
12	2,000	150.00	113.6	Ladder Peak
13	3,000	150.00	75.8	Ladder Peak
14	7,000	150.00	32.5	Ladder Peak
15	10,380	75.00	10.9	Upper Marker

Assay Class: High Sensitivity DNA Assay
 Data Path: C:\...ents and Settings\Bioanalyzer\2013-07-22\2013-07-22_002.xad

Created: 7/22/2013 3:08:45 PM
 Modified: 7/22/2013 3:49:15 PM

Electropherogram Summary Continued ...



Overall Results for sample 1 : LSAA01A

Number of peaks found: 33 Corr. Area 1: 4,605.0
 Noise: 0.1

Peak table for sample 1 : LSAA01A

Peak	Size [bp]	Conc. [pg/μl]	Molarity [pmol/l]	Observations
1	35	125.00	5,411.3	Lower Marker
2	140	17.89	193.5	
3	238	20.96	133.3	
4	279	28.84	156.6	
5	286	75.89	401.7	
6	309	56.63	277.4	
7	318	29.14	138.7	
8	361	437.34	1,835.2	
9	385	146.03	574.0	
10	393	203.28	784.5	
11	429	390.70	1,380.6	
12	443	599.00	2,049.0	
13	481	587.65	1,850.1	
14	502	416.51	1,255.9	
15	535	726.60	2,059.2	
16	572	647.31	1,715.3	
17	632	606.19	1,452.9	
18	677	644.62	1,443.1	
19	783	319.49	618.0	
20	867	423.72	740.7	
21	971	183.67	286.6	
22	1,105	525.09	720.3	
23	1,586	469.38	448.3	
24	4,516	39.92	13.4	
25	6,502	17.01	4.0	
26	8,759	42.08	7.3	

Assay Class: High Sensitivity DNA Assay
 Data Path: C:\...ents and Settings\Bioanalyzer\2013-07-22\2013-07-22_002.xad


Created: 7/22/2013 3:08:45 PM
 Modified: 7/22/2013 3:49:15 PM

Electropherogram Summary Continued ...

... Peak table for sample 1 : LSAA01A

Peak	Size [bp]	Conc. [pg/μl]	Molarity [pmol/l]	Observations
27	9,975	38.37	5.8	
28	10,380	75.00	10.9	Upper Marker
29	14,434	0.00	0.0	
30	15,295	0.00	0.0	
31	16,207	0.00	0.0	
32	16,967	0.00	0.0	
33	18,284	0.00	0.0	
34	19,602	0.00	0.0	
35	23,655	0.00	0.0	

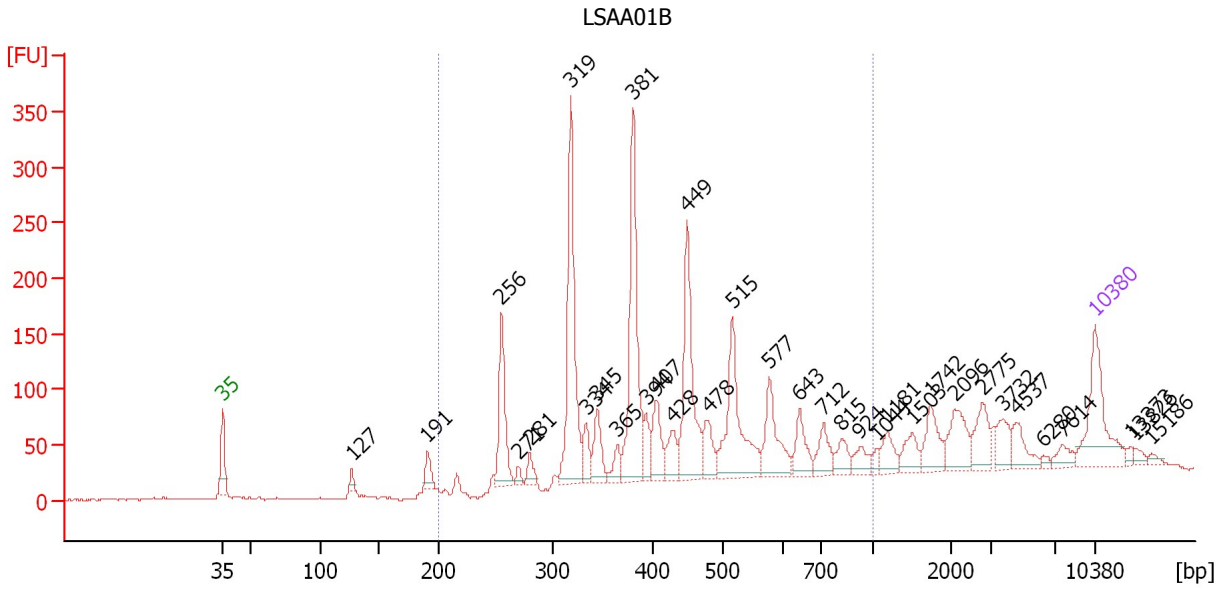
Region table for sample 1 : LSAA01A

From [bp]	To [bp]	Average Size [bp]	Molarity [pmol/l]	Conc. [pg/μl]	Corr. Area	% of Total	Size distribution in CV [%]	Color
267	8,109	878	20,140.0	7,732.62	4,605.0	95	100.0	

Assay Class: High Sensitivity DNA Assay
 Data Path: C:\...ents and Settings\Bioanalyzer\2013-07-22\2013-07-22_002.xad

Created: 7/22/2013 3:08:45 PM
 Modified: 7/22/2013 3:49:15 PM

Electropherogram Summary Continued ...



Overall Results for sample 2 : LSAA01B

Number of peaks found: 34 Corr. Area 1: 2,097.4
 Noise: 1.0

Peak table for sample 2 : LSAA01B

Peak	Size [bp]	Conc. [pg/μl]	Molarity [pmol/l]	Observations
1	35	125.00	5,411.3	Lower Marker
2	127	12.04	144.2	
3	191	23.47	186.0	
4	256	106.82	632.4	
5	271	8.77	49.0	
6	281	18.51	99.9	
7	319	229.47	1,089.8	
8	334	31.59	143.3	
9	345	45.38	199.2	
10	365	20.17	83.6	
11	381	210.13	836.1	
12	394	28.02	107.7	
13	407	49.53	184.5	
14	428	33.70	119.2	
15	449	157.50	531.3	
16	478	37.37	118.4	
17	515	138.04	406.1	
18	577	71.23	187.0	
19	643	38.31	90.2	
20	712	32.53	69.2	
21	815	23.12	43.0	
22	924	17.68	29.0	
23	1,044	8.35	12.1	
24	1,181	23.19	29.8	
25	1,503	24.05	24.2	
26	1,742	37.11	32.3	

Assay Class: High Sensitivity DNA Assay
 Data Path: C:\...ents and Settings\Bioanalyzer\2013-07-22\2013-07-22_002.xad


Created: 7/22/2013 3:08:45 PM
 Modified: 7/22/2013 3:49:15 PM

Electropherogram Summary Continued ...

... Peak table for sample 2 : LSAA01B

Peak	Size [bp]	Conc. [pg/µl]	Molarity [pmol/l]	Observations
27	2,096	44.12	31.9	
28	2,775	35.32	19.3	
29	3,732	24.15	9.8	
30	4,537	25.46	8.5	
31	6,280	3.70	0.9	
32	7,614	12.98	2.6	
33	10,380	75.00	10.9	Upper Marker
34	13,373	0.00	0.0	
35	13,826	0.00	0.0	
36	15,186	0.00	0.0	

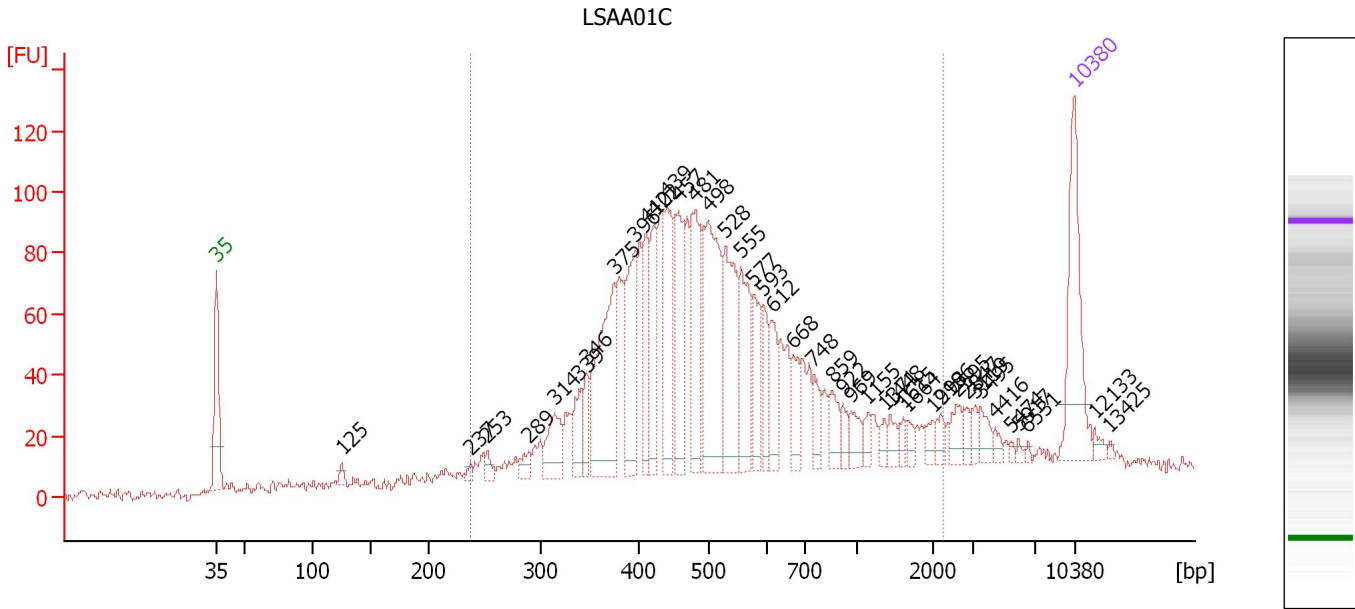
Region table for sample 2 : LSAA01B

From [bp]	To [bp]	Average Size [bp]	Molarity [pmol/l]	Conc. [pg/µl]	Corr. Area	% of Total	Size distribution in CV [%]	Color
200	1,000	453	5,257.2	1,374.65	2,097.4	76	33.2	

Assay Class: High Sensitivity DNA Assay
 Data Path: C:\...ents and Settings\Bioanalyzer\2013-07-22\2013-07-22_002.xad

Created: 7/22/2013 3:08:45 PM
 Modified: 7/22/2013 3:49:15 PM

Electropherogram Summary Continued ...



Overall Results for sample 3 : LSAA01C

Number of peaks found: 42 Corr. Area 1: 1,949.1
 Noise: 2.0

Peak table for sample 3 : LSAA01C

Peak	Size [bp]	Conc. [pg/μl]	Molarity [pmol/l]	Observations
1	35	125.00	5,411.3	Lower Marker
2	125	7.77	94.4	
3	237	5.45	34.8	
4	253	10.65	63.9	
5	289	12.31	64.5	
6	314	40.26	194.1	
7	339	29.77	133.0	
8	346	24.83	108.7	
9	375	133.81	540.8	
10	396	88.43	338.3	
11	410	53.09	196.0	
12	422	58.51	210.2	
13	439	83.88	289.4	
14	457	76.73	254.6	
15	481	87.41	275.4	
16	498	133.09	404.6	
17	528	93.63	268.6	
18	555	69.74	190.5	
19	577	41.23	108.3	
20	593	28.38	72.5	
21	612	35.36	87.6	
22	668	26.12	59.3	
23	748	18.46	37.4	
24	859	20.39	36.0	
25	922	10.68	17.6	
26	969	15.36	24.0	

Assay Class: High Sensitivity DNA Assay
 Data Path: C:\...ents and Settings\Bioanalyzer\2013-07-22\2013-07-22_002.xad


Created: 7/22/2013 3:08:45 PM
 Modified: 7/22/2013 3:49:15 PM

Electropherogram Summary Continued ...

... Peak table for sample 3 : LSAA01C

Peak	Size [bp]	Conc. [pg/μl]	Molarity [pmol/l]	Observations
27	1,155	9.73	12.8	
28	1,371	7.57	8.4	
29	1,448	9.99	10.5	
30	1,615	6.03	5.7	
31	1,664	6.71	6.1	
32	1,998	7.28	5.5	
33	2,196	9.24	6.4	
34	2,595	13.14	7.7	
35	2,847	6.74	3.6	
36	3,119	7.20	3.5	
37	3,495	11.60	5.0	
38	4,416	4.99	1.7	
39	5,474	2.34	0.6	
40	5,917	2.41	0.6	
41	6,531	1.81	0.4	
42	10,380	75.00	10.9	Upper Marker
43	12,133	0.00	0.0	
44	13,425	0.00	0.0	

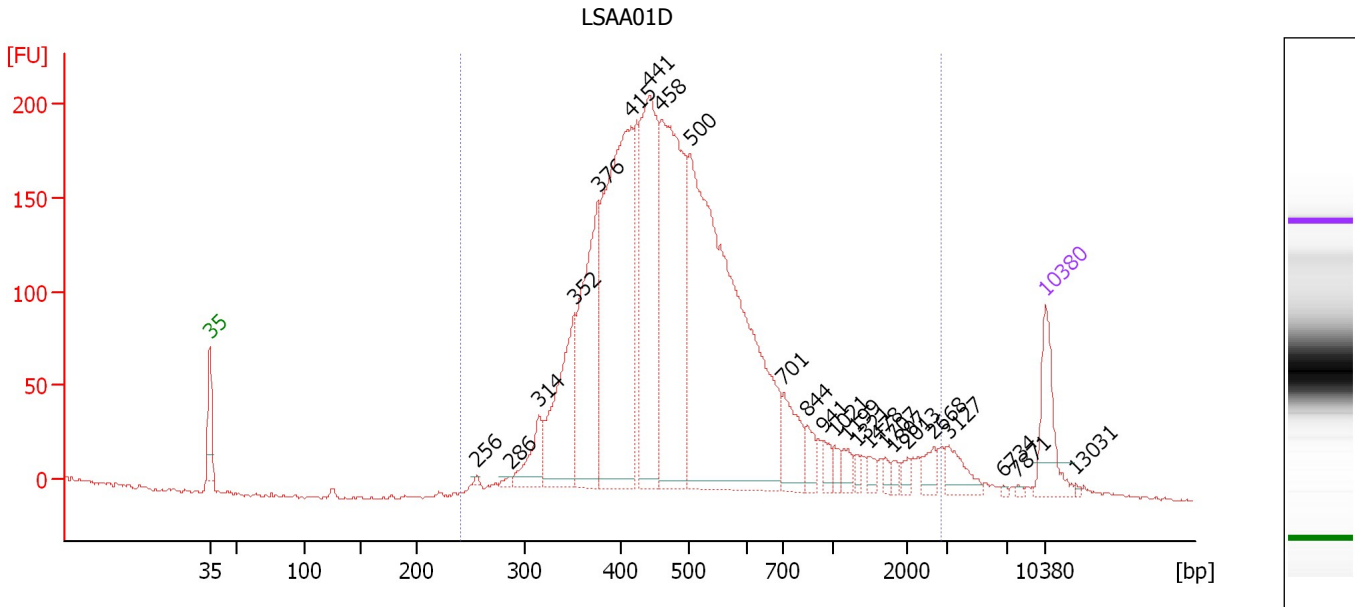
Region table for sample 3 : LSAA01C

From [bp]	To [bp]	Average Size [bp]	Molarity [pmol/l]	Conc. [pg/μl]	Corr. Area	% of Total	Size distribution in CV [%]	Color
238	2,258	578	5,679.2	1,739.07	1,949.1	89	57.4	

Assay Class: High Sensitivity DNA Assay
 Data Path: C:\...ents and Settings\Bioanalyzer\2013-07-22\2013-07-22_002.xad

Created: 7/22/2013 3:08:45 PM
 Modified: 7/22/2013 3:49:15 PM

Electropherogram Summary Continued ...



Overall Results for sample 4 : LSAA01D

Number of peaks found: 24 Corr. Area 1: 3,888.3
 Noise: 0.9

Peak table for sample 4 : LSAA01D

Peak	Size [bp]	Conc. [pg/μl]	Molarity [pmol/l]	Observations
1	35	125.00	5,411.3	Lower Marker
2	256	4.50	26.6	
3	286	6.55	34.7	
4	314	72.33	348.6	
5	352	232.21	1,000.7	
6	376	330.58	1,332.0	
7	415	635.41	2,321.6	
8	441	423.64	1,455.0	
9	458	543.54	1,797.1	
10	500	1,028.97	3,116.0	
11	701	85.40	184.7	
12	844	31.64	56.8	
13	941	19.95	32.1	
14	1,021	14.54	21.6	
15	1,199	19.09	24.1	
16	1,321	9.55	11.0	
17	1,478	11.87	12.2	
18	1,707	9.20	8.2	
19	1,807	9.12	7.7	
20	2,013	11.03	8.3	
21	2,668	18.93	10.8	
22	3,127	37.33	18.1	
23	6,734	2.02	0.5	
24	7,871	2.79	0.5	
25	10,380	75.00	10.9	Upper Marker
26	13,031	0.00	0.0	

Assay Class: High Sensitivity DNA Assay
Data Path: C:\...ents and Settings\Bioanalyzer\2013-07-22\2013-07-22_002.xad

Created: 7/22/2013 3:08:45 PM
Modified: 7/22/2013 3:49:15 PM

Electropherogram Summary Continued ...

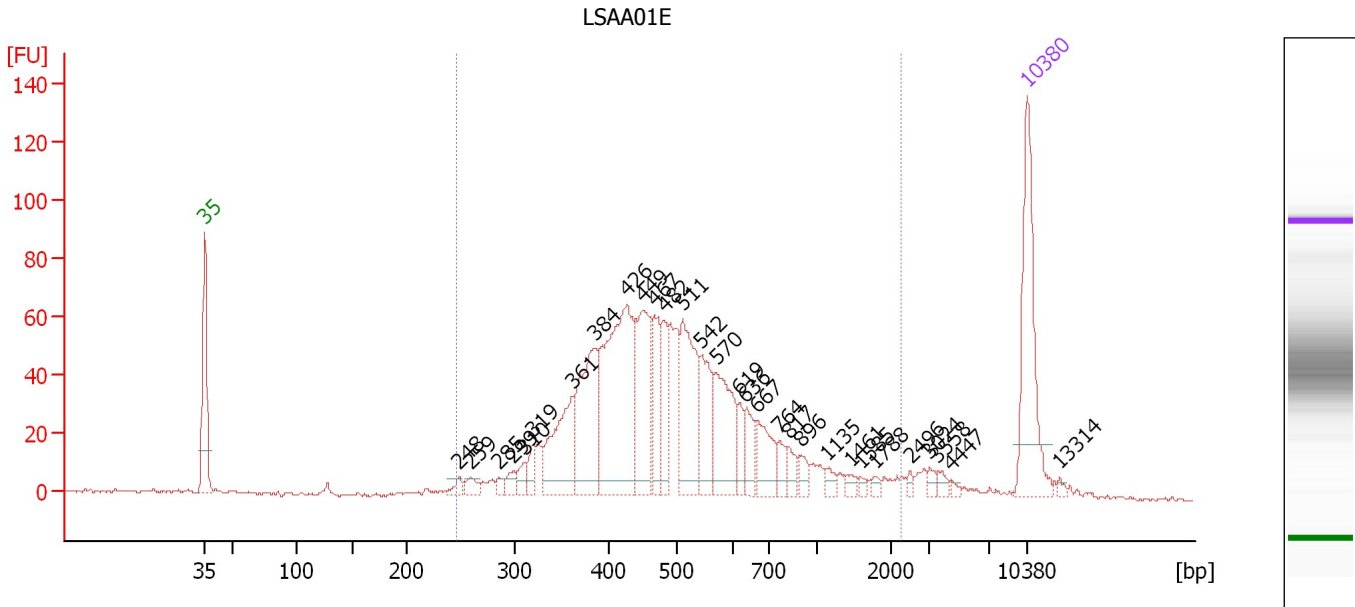
... Region table for sample 4 : LSAA01D

From [bp]	To [bp]	Average Size [bp]	Molarity [pmol/l]	Conc. [pg/μl]	Corr. Area	% of Total	Size distribution in CV [%]	Color
241	2,857	562	11,996.0	3,661.09	3,888.3	97	64.0	■

Assay Class: High Sensitivity DNA Assay
 Data Path: C:\...ents and Settings\Bioanalyzer\2013-07-22\2013-07-22_002.xad

Created: 7/22/2013 3:08:45 PM
 Modified: 7/22/2013 3:49:15 PM

Electropherogram Summary Continued ...



Overall Results for sample 5 : LSAA01E

Number of peaks found: 30 Corr. Area 1: 1,293.1
 Noise: 0.6

Peak table for sample 5 : LSAA01E

Peak	Size [bp]	Conc. [pg/μl]	Molarity [pmol/l]	Observations
1	35	125.00	5,411.3	Lower Marker
2	248	6.42	39.2	
3	259	9.03	52.8	
4	285	5.17	27.4	
5	299	8.37	42.5	
6	310	9.76	47.6	
7	319	13.13	62.3	
8	361	72.09	302.4	
9	384	98.64	388.9	
10	426	173.17	615.6	
11	449	81.81	276.0	
12	467	44.69	144.9	
13	482	33.15	104.3	
14	511	82.98	246.0	
15	542	46.95	131.3	
16	570	64.91	172.5	
17	619	14.70	36.0	
18	636	19.44	46.3	
19	667	31.70	72.0	
20	764	11.37	22.5	
21	817	10.33	19.2	
22	896	8.83	14.9	
23	1,135	5.48	7.3	
24	1,461	5.03	5.2	
25	1,585	3.15	3.0	
26	1,788	3.01	2.6	

Assay Class: High Sensitivity DNA Assay
 Data Path: C:\...ents and Settings\Bioanalyzer\2013-07-22\2013-07-22_002.xad


Created: 7/22/2013 3:08:45 PM
 Modified: 7/22/2013 3:49:15 PM

Electropherogram Summary Continued ...

... Peak table for sample 5 : LSAA01E

Peak	Size [bp]	Conc. [pg/μl]	Molarity [pmol/l]	Observations
27	2,496	2.66	1.6	
28	3,024	3.81	1.9	
29	3,558	4.60	2.0	
30	4,447	2.04	0.7	
31	10,380	75.00	10.9	Upper Marker
32	13,314	0.00	0.0	

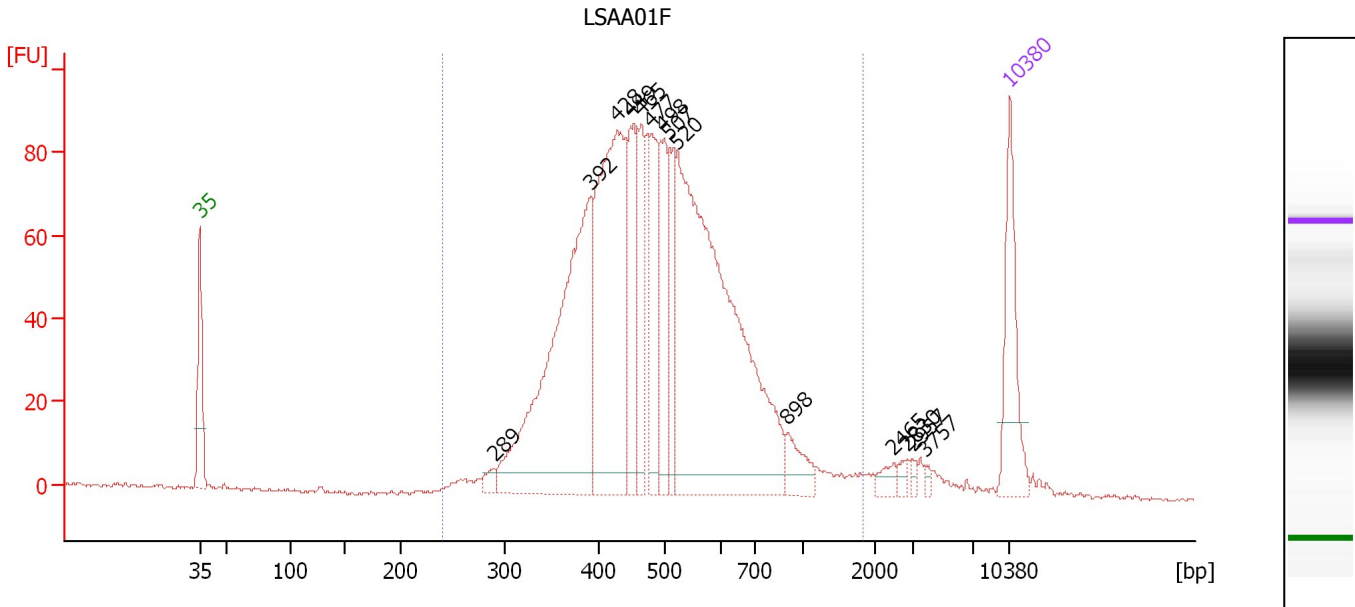
Region table for sample 5 : LSAA01E

From [bp]	To [bp]	Average Size [bp]	Molarity [pmol/l]	Conc. [pg/μl]	Corr. Area	% of Total	Size distribution in CV [%]	Color
246	2,245	541	3,214.5	972.09	1,293.1	94	50.0	

Assay Class: High Sensitivity DNA Assay
 Data Path: C:\...ents and Settings\Bioanalyzer\2013-07-22\2013-07-22_002.xad

Created: 7/22/2013 3:08:45 PM
 Modified: 7/22/2013 3:49:15 PM

Electropherogram Summary Continued ...



Overall Results for sample 6 : LSAA01F

Number of peaks found: 14 Corr. Area 1: 1,720.0
 Noise: 0.5

Peak table for sample 6 : LSAA01F

Peak	Size [bp]	Conc. [pg/μl]	Molarity [pmol/l]	Observations
1	35	125.00	5,411.3	Lower Marker
2	289	12.12	63.4	
3	392	438.81	1,697.5	
4	428	367.87	1,300.8	
5	449	107.83	364.2	
6	465	88.86	289.8	
7	477	103.54	328.6	
8	498	100.13	304.5	
9	507	75.66	226.2	
10	520	621.59	1,810.4	
11	898	30.10	50.8	
12	2,465	10.33	6.4	
13	2,830	6.48	3.5	
14	2,957	4.79	2.5	
15	3,757	3.86	1.6	
16	10,380	75.00	10.9	Upper Marker

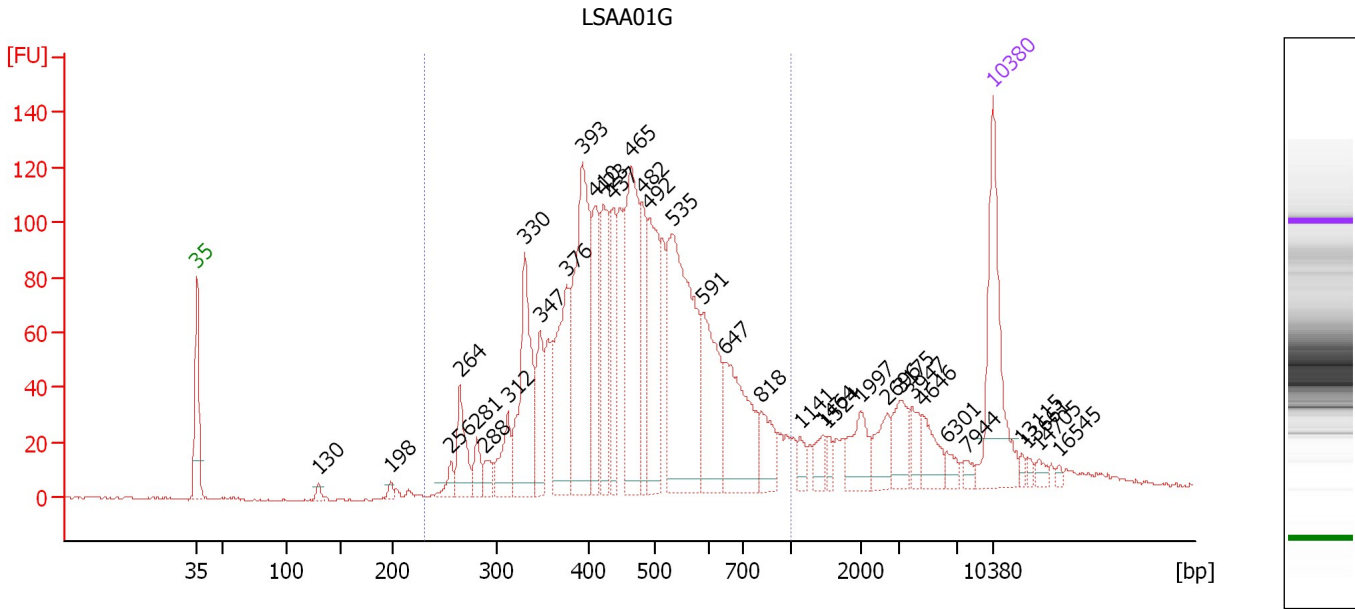
Region table for sample 6 : LSAA01F

From [bp]	To [bp]	Average Size [bp]	Molarity [pmol/l]	Conc. [pg/μl]	Corr. Area	% of Total	Size distribution in CV [%]	Color
240	1,834	510	6,497.8	1,978.75	1,720.0	96	34.5	Blue

Assay Class: High Sensitivity DNA Assay
 Data Path: C:\...ents and Settings\Bioanalyzer\2013-07-22\2013-07-22_002.xad

Created: 7/22/2013 3:08:45 PM
 Modified: 7/22/2013 3:49:15 PM

Electropherogram Summary Continued ...



Overall Results for sample 7 : LSAA01G

Number of peaks found: 35 Corr. Area 1: 2,240.3
 Noise: 0.3

Peak table for sample 7 : LSAA01G

Peak	Size [bp]	Conc. [pg/μl]	Molarity [pmol/l]	Observations
1	35	125.00	5,411.3	Lower Marker
2	130	5.52	64.2	
3	198	4.39	33.7	
4	256	12.51	74.0	
5	264	42.22	242.2	
6	281	17.01	91.9	
7	288	12.71	66.8	
8	312	33.47	162.7	
9	330	110.99	509.0	
10	347	44.32	193.7	
11	376	99.01	399.0	
12	393	170.49	656.6	
13	410	69.74	257.5	
14	423	64.96	232.9	
15	437	55.36	191.8	
16	465	134.41	437.8	
17	482	57.60	181.2	
18	492	88.01	270.9	
19	535	197.84	560.4	
20	591	79.62	204.1	
21	647	86.80	203.4	
22	818	27.02	50.0	
23	1,141	9.55	12.7	
24	1,464	11.80	12.2	
25	1,524	6.46	6.4	
26	1,997	25.99	19.7	

Assay Class: High Sensitivity DNA Assay
 Data Path: C:\...ents and Settings\Bioanalyzer\2013-07-22\2013-07-22_002.xad


Created: 7/22/2013 3:08:45 PM
 Modified: 7/22/2013 3:49:15 PM

Electropherogram Summary Continued ...

... Peak table for sample 7 : LSAA01G

Peak	Size [bp]	Conc. [pg/μl]	Molarity [pmol/l]	Observations
27	2,696	19.07	10.7	
28	3,175	24.35	11.6	
29	3,947	14.31	5.5	
30	4,646	19.36	6.3	
31	6,301	7.43	1.8	
32	7,944	5.03	1.0	
33	10,380	75.00	10.9	Upper Marker
34	13,115	0.00	0.0	
35	13,661	0.00	0.0	
36	14,705	0.00	0.0	
37	16,545	0.00	0.0	

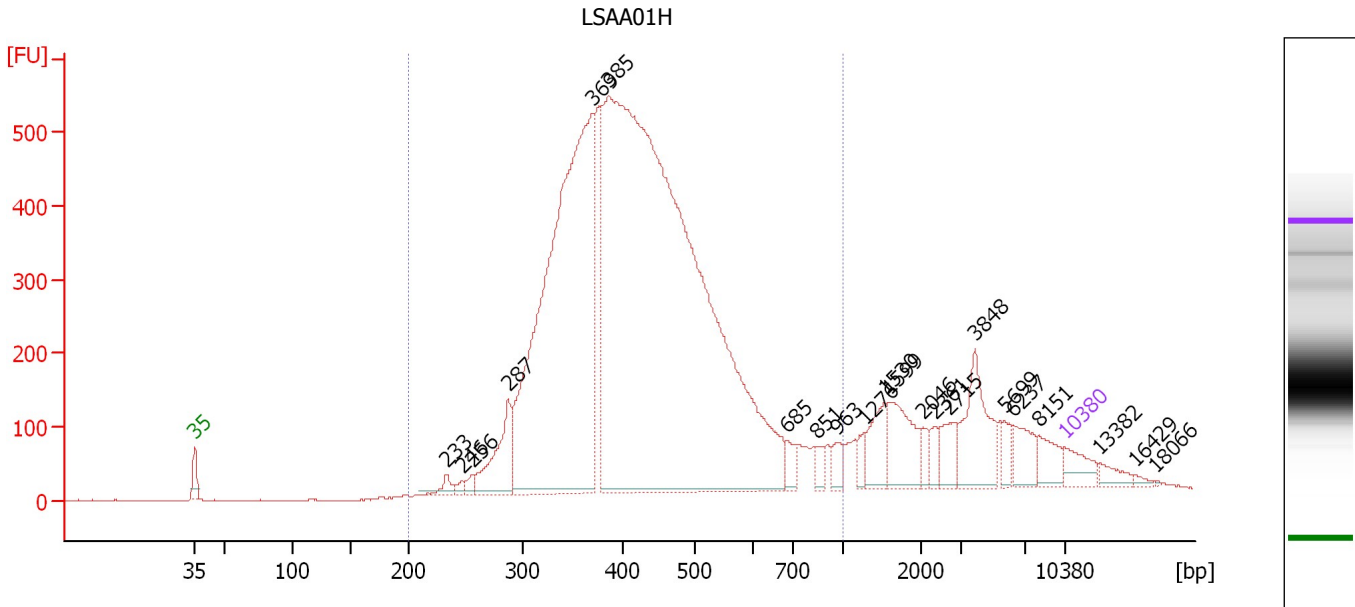
Region table for sample 7 : LSAA01G

From [bp]	To [bp]	Average Size [bp]	Molarity [pmol/l]	Conc. [pg/μl]	Corr. Area	% of Total	Size distribution in CV [%]	Color
230	1,000	480	5,370.4	1,547.08	2,240.3	85	27.6	

Assay Class: High Sensitivity DNA Assay
 Data Path: C:\...ents and Settings\Bioanalyzer\2013-07-22\2013-07-22_002.xad

Created: 7/22/2013 3:08:45 PM
 Modified: 7/22/2013 3:49:15 PM

Electropherogram Summary Continued ...



Overall Results for sample 8 : LSAA01H

Number of peaks found: 22 Corr. Area 1: 10,697.6
 Noise: 0.9


Peak table for sample 8 : LSAA01H

Peak	Size [bp]	Conc. [pg/μl]	Molarity [pmol/l]	Observations
1	35	125.00	5,411.3	Lower Marker
2	233	50.45	328.4	
3	246	20.91	128.6	
4	256	36.41	215.7	
5	287	322.03	1,701.9	
6	369	3,087.24	12,668.5	
7	385	6,341.24	24,939.3	
8	685	60.55	133.9	
9	851	38.45	68.5	
10	963	54.72	86.1	
11	1,276	46.98	55.8	
12	1,530	136.16	134.8	
13	1,599	210.42	199.4	
14	2,046	42.94	31.8	
15	2,361	43.28	27.8	
16	2,715	86.77	48.4	
17	3,849	259.64	102.2	
18	5,699	49.27	13.1	
19	6,237	103.84	25.2	
20	8,151	85.60	15.9	
21	10,380	75.00	10.9	Upper Marker
22	13,382	0.00	0.0	
23	16,429	0.00	0.0	
24	18,066	0.00	0.0	

Assay Class: High Sensitivity DNA Assay
Data Path: C:\...ents and Settings\Bioanalyzer\2013-07-22\2013-07-22_002.xad

Created: 7/22/2013 3:08:45 PM
Modified: 7/22/2013 3:49:15 PM

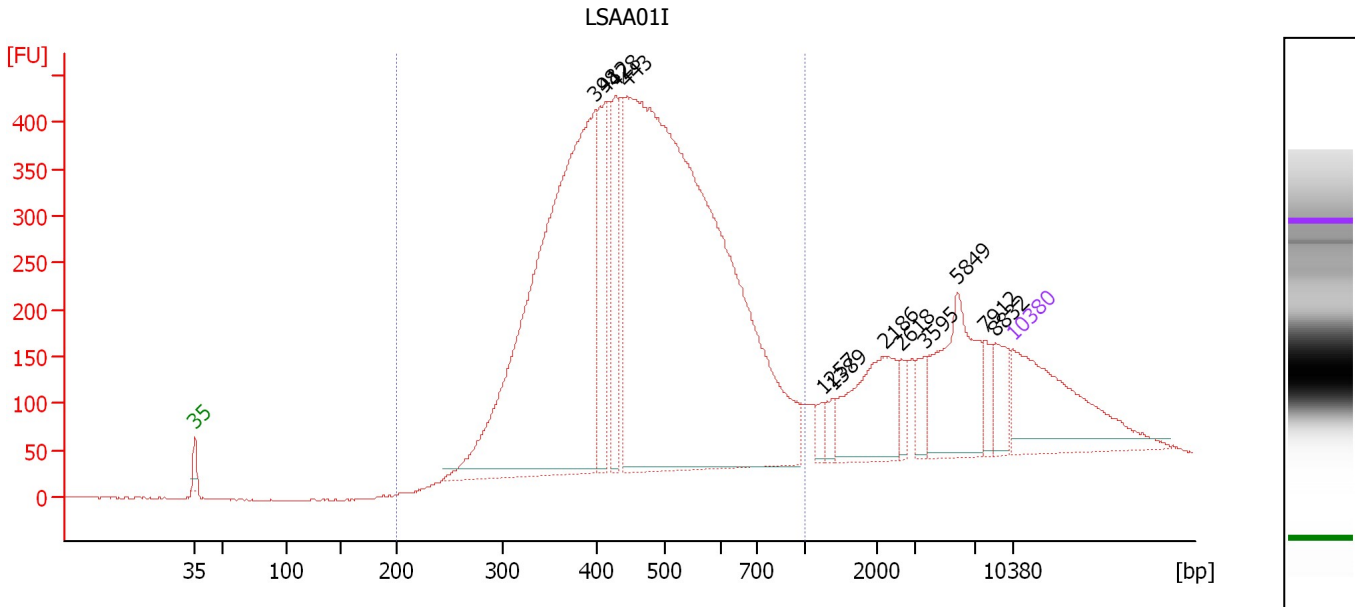
Electropherogram Summary Continued ...**... Region table for sample 8 : LSAA01H**

From [bp]	To [bp]	Average Size [bp]	Molarity [pmol/l]	Conc. [pg/μl]	Corr. Area	% of Total	Size distribution in CV [%]	Co lor
200	1,000	433	38,891.9	10,280.89	10,697.6	86	26.8	

Assay Class: High Sensitivity DNA Assay
 Data Path: C:\...ents and Settings\Bioanalyzer\2013-07-22\2013-07-22_002.xad

Created: 7/22/2013 3:08:45 PM
 Modified: 7/22/2013 3:49:15 PM

Electropherogram Summary Continued ...



Overall Results for sample 9 : LSAA01I

Number of peaks found: 12 Corr. Area 1: 9,226.4
 Noise: 1.0

Peak table for sample 9 : LSAA01I

Peak	Size [bp]	Conc. [pg/μl]	Molarity [pmol/l]	Observations
1	35	125.00	5,411.3	Lower Marker
2	398	487.89	1,857.0	
3	412	70.51	259.0	
4	428	56.08	198.8	
5	443	771.63	2,636.6	
6	1,257	6.27	7.6	
7	1,389	8.38	9.1	
8	2,186	57.52	39.9	
9	2,618	10.05	5.8	
10	3,595	11.16	4.7	
11	5,849	69.08	17.9	
12	7,912	11.40	2.2	
13	8,832	17.46	3.0	
14	10,380	75.00	10.9	Upper Marker

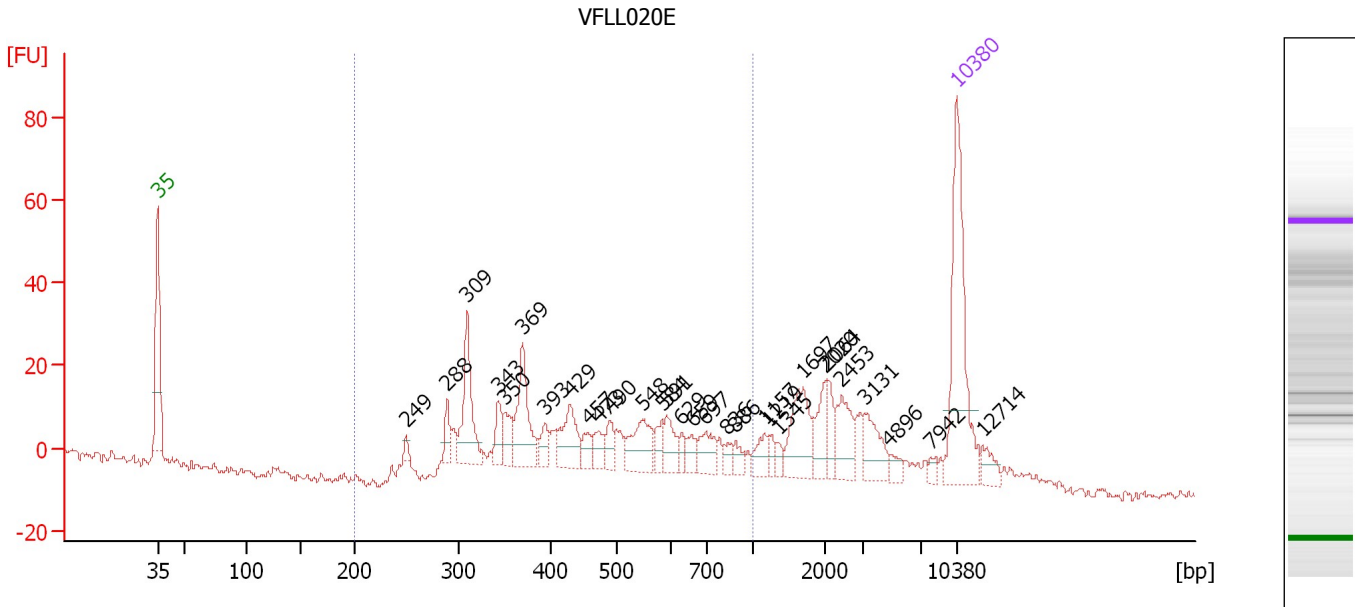
Region table for sample 9 : LSAA01I

From [bp]	To [bp]	Average Size [bp]	Molarity [pmol/l]	Conc. [pg/μl]	Corr. Area	% of Total	Size distribution in CV [%]	Color
200	1,000	476	5,033.7	1,444.47	9,226.4	83	27.3	Blue

Assay Class: High Sensitivity DNA Assay
 Data Path: C:\...ents and Settings\Bioanalyzer\2013-07-22\2013-07-22_002.xad

Created: 7/22/2013 3:08:45 PM
 Modified: 7/22/2013 3:49:15 PM

Electropherogram Summary Continued ...



Overall Results for sample 10 : VFLLO20E

Number of peaks found: 30 Corr. Area 1: 349.8
 Noise: 1.0

Peak table for sample 10 : VFLLO20E

Peak	Size [bp]	Conc. [pg/μl]	Molarity [pmol/l]	Observations
1	35	125.00	5,411.3	Lower Marker
2	249	4.39	26.7	
3	288	12.90	67.7	
4	309	49.12	241.0	
5	343	15.86	70.1	
6	350	14.86	64.4	
7	369	44.97	184.6	
8	393	11.09	42.8	
9	429	29.09	102.7	
10	457	9.63	31.9	
11	473	11.21	35.9	
12	490	11.33	35.1	
13	548	28.89	79.8	
14	584	9.42	24.4	
15	591	15.26	39.1	
16	629	5.97	14.4	
17	659	8.52	19.6	
18	697	16.20	35.2	
19	836	5.40	9.8	
20	886	6.65	11.4	
21	1,157	10.52	13.8	
22	1,219	5.11	6.4	
23	1,345	4.45	5.0	
24	1,697	32.45	29.0	
25	2,020	15.78	11.8	
26	2,064	12.44	9.1	

Assay Class: High Sensitivity DNA Assay
 Data Path: C:\...ents and Settings\Bioanalyzer\2013-07-22\2013-07-22_002.xad


Created: 7/22/2013 3:08:45 PM
 Modified: 7/22/2013 3:49:15 PM

Electropherogram Summary Continued ...

... Peak table for sample 10 : VFLLO20E

Peak	Size [bp]	Conc. [pg/μl]	Molarity [pmol/l]	Observations
27	2,453	22.23	13.7	
28	3,131	19.64	9.5	
29	4,896	5.37	1.7	
30	7,942	3.65	0.7	
31	10,380	75.00	10.9	Upper Marker
32	12,714	0.00	0.0	

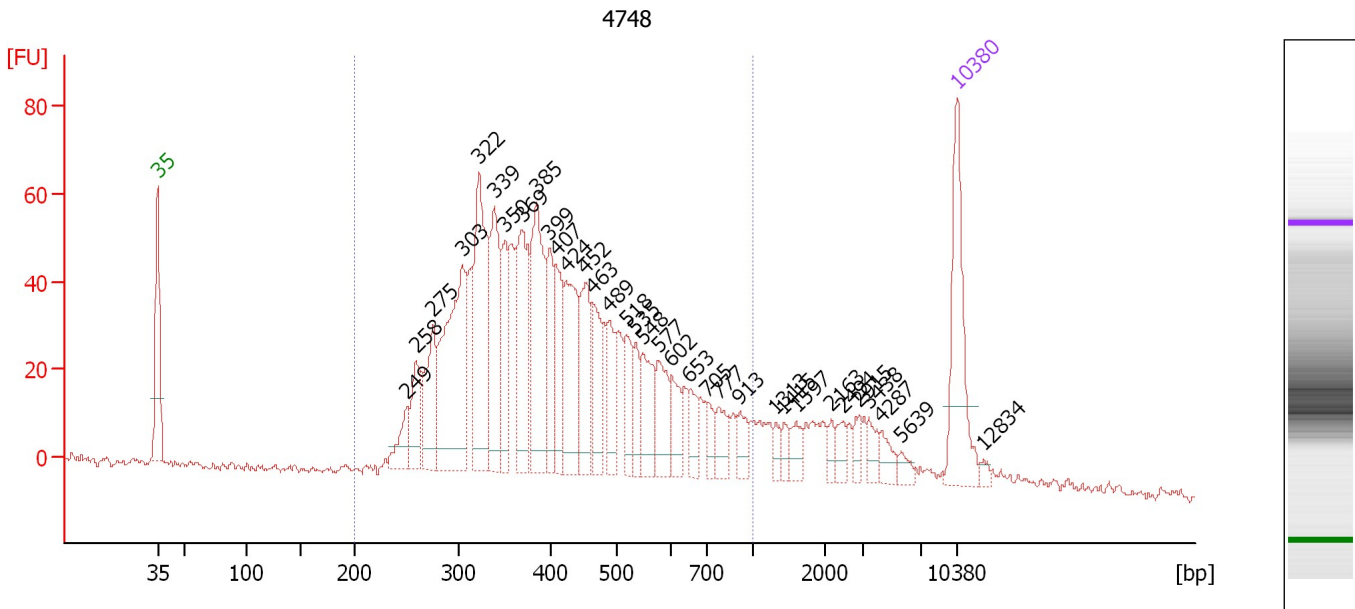
Region table for sample 10 : VFLLO20E

From [bp]	To [bp]	Average Size [bp]	Molarity [pmol/l]	Conc. [pg/μl]	Corr. Area	% of Total	Size distribution in CV [%]	Color
200	1,000	487	1,290.8	360.18	349.8	61	34.1	

Assay Class: High Sensitivity DNA Assay
 Data Path: C:\...ents and Settings\Bioanalyzer\2013-07-22\2013-07-22_002.xad

Created: 7/22/2013 3:08:45 PM
 Modified: 7/22/2013 3:49:15 PM

Electropherogram Summary Continued ...



Overall Results for sample 11 : 4748

Number of peaks found: 34 Corr. Area 1: 1,390.7
 Noise: 1.0

Peak table for sample 11 : 4748

Peak	Size [bp]	Conc. [pg/μl]	Molarity [pmol/l]	Observations
1	35	125.00	5,411.3	Lower Marker
2	249	30.35	184.5	
3	258	42.85	251.2	
4	275	66.80	367.8	
5	303	178.12	890.7	
6	322	147.60	694.5	
7	339	99.66	446.0	
8	350	55.88	241.8	
9	369	101.65	417.9	
10	385	117.72	463.9	
11	399	51.70	196.5	
12	407	54.31	202.0	
13	424	84.35	301.6	
14	452	65.78	220.4	
15	463	55.22	180.6	
16	489	42.72	132.4	
17	518	33.32	97.5	
18	535	24.68	69.8	
19	548	45.71	126.4	
20	577	39.37	103.4	
21	602	26.76	67.3	
22	653	19.59	45.4	
23	705	14.60	31.4	
24	777	21.93	42.8	
25	913	16.69	27.7	
26	1,313	7.81	9.0	

Assay Class: High Sensitivity DNA Assay
 Data Path: C:\...ents and Settings\Bioanalyzer\2013-07-22\2013-07-22_002.xad


Created: 7/22/2013 3:08:45 PM
 Modified: 7/22/2013 3:49:15 PM

Electropherogram Summary Continued ...

... Peak table for sample 11 : 4748

Peak	Size [bp]	Conc. [pg/μl]	Molarity [pmol/l]	Observations
27	1,415	9.38	10.0	
28	1,597	12.99	12.3	
29	2,163	7.18	5.0	
30	2,494	11.03	6.7	
31	2,915	10.03	5.2	
32	3,438	10.17	4.5	
33	4,287	12.31	4.4	
34	5,639	6.91	1.9	
35	10,380	75.00	10.9	Upper Marker
36	12,834	0.00	0.0	

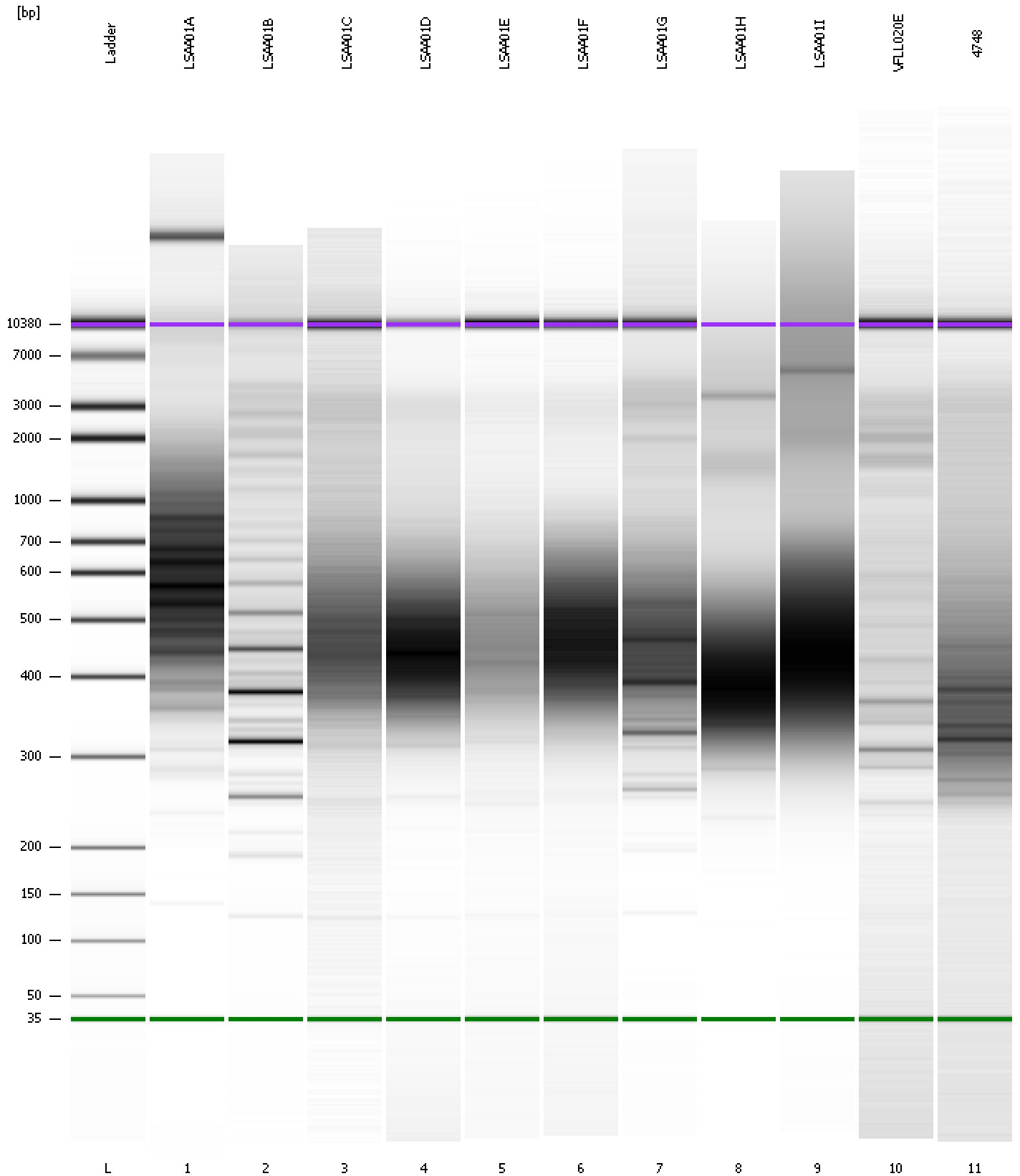
Region table for sample 11 : 4748

From [bp]	To [bp]	Average Size [bp]	Molarity [pmol/l]	Conc. [pg/μl]	Corr. Area	% of Total	Size distribution in CV [%]	Color
200	1,000	433	6,803.7	1,707.75	1,390.7	85	34.1	

Assay Class: High Sensitivity DNA Assay
Data Path: C:\...ents and Settings\Bioanalyzer\2013-07-22\2013-07-22_002.xad

Created: 7/22/2013 3:08:45 PM
Modified: 7/22/2013 3:49:15 PM

Gel Image



Assay Class: High Sensitivity DNA Assay
 Data Path: C:\...ents and Settings\Bioanalyzer\2013-07-22\2013-07-22_002.xad

Created: 7/22/2013 3:08:45 PM
 Modified: 7/22/2013 3:49:15 PM

Run Logbook

Description	Number	Source	Category	Sub Category	Time	Time Zone	User	Host
Run ended on port 1 (Number of wells acquired: 12)		Instrument	Run		7/22/2013 3:49:12 PM	(GMT --07:00) Pacific Standard Time	UC Davis	D8XSMGH1
Run started on port 1 (File: C:\Documents and Settings\Bioanalyzer\2013-07-22\2013-07-22_002.xad)		Instrument	Run		7/22/2013 3:08:51 PM	(GMT --07:00) Pacific Standard Time	UC Davis	D8XSMGH1
Product Number : G2938B		Instrument	Run		7/22/2013 3:08:51 PM	(GMT --07:00) Pacific Standard Time	UC Davis	D8XSMGH1
Name :		Instrument	Run		7/22/2013 3:08:51 PM	(GMT --07:00) Pacific Standard Time	UC Davis	D8XSMGH1
Vendor : Agilent Technologies		Instrument	Run		7/22/2013 3:08:51 PM	(GMT --07:00) Pacific Standard Time	UC Davis	D8XSMGH1
Serial# : DE13701086		Instrument	Run		7/22/2013 3:08:51 PM	(GMT --07:00) Pacific Standard Time	UC Davis	D8XSMGH1
Firmware : C.01.069		Instrument	Run		7/22/2013 3:08:51 PM	(GMT --07:00) Pacific Standard Time	UC Davis	D8XSMGH1
Cartridge : Electrode		Instrument	Run		7/22/2013 3:08:51 PM	(GMT --07:00) Pacific Standard Time	UC Davis	D8XSMGH1