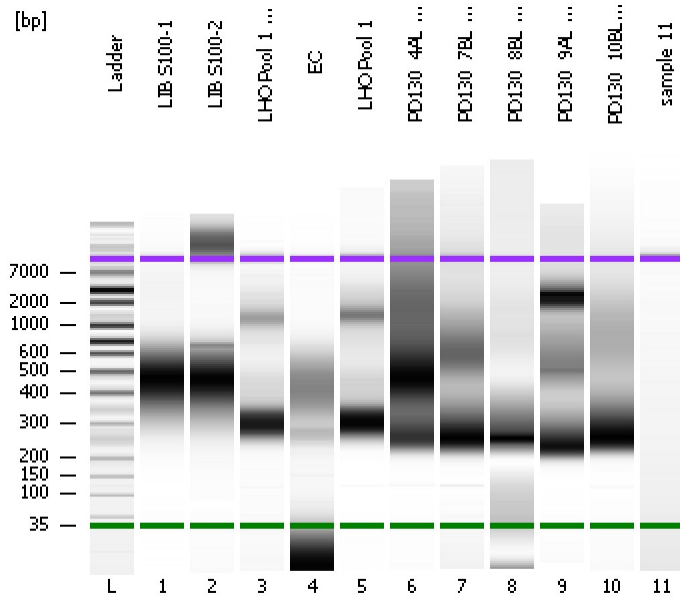


Assay Class: High Sensitivity DNA Assay  
Data Path: C:\...ents and Settings\Bioanalyzer\2013-07-22\2013-07-22\_003.xad

Created: 7/22/2013 4:17:51 PM  
Modified: 7/22/2013 5:00:32 PM

**Electrophoresis File Run Summary**



Instrument Information:

Instrument Name: DE13701086      Firmware: C.01.069  
Serial#: DE13701086      Type: G2938B

Assay Information:

Assay Origin Path: C:\Program Files\Agilent\2100 bioanalyzer\2100 expert\assays\dsDNA\High Sensitivity DNA.xsy  
Assay Class: High Sensitivity DNA Assay  
Version: 1.03  
Assay Comments: Copyright © 2003-2010 Agilent Technologies

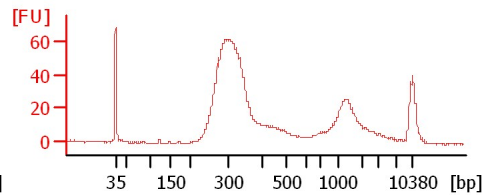
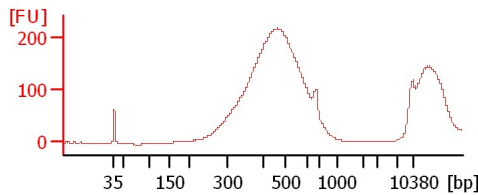
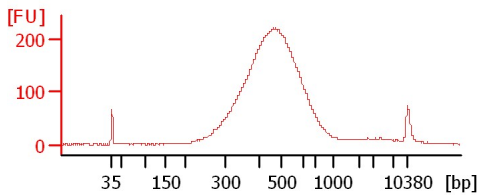
Chip Information:

Chip Lot #:   
Reagent Kit Lot #:   
Chip Comments:

**LIB S100-1**

**LIB S100-2**

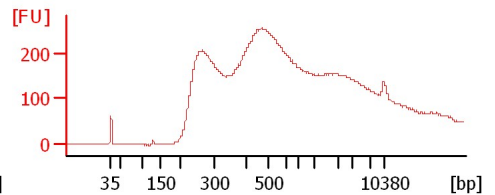
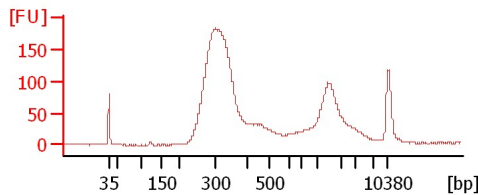
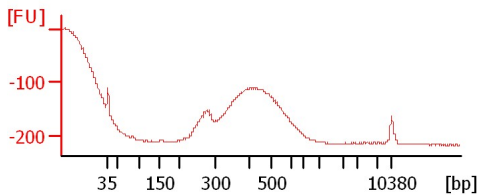
**LHO Pool 1 1:2**



**EC**

**LHO Pool 1**

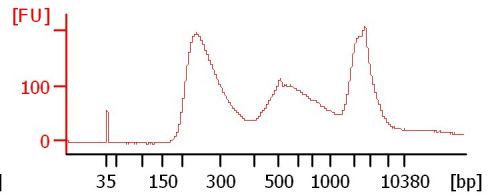
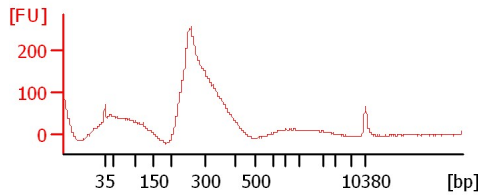
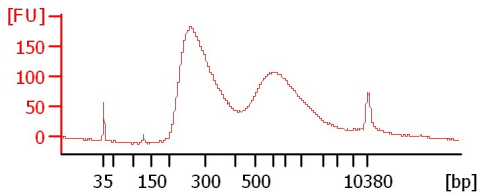
**PD130\_4AL 1:3**



**PD130\_7BL 1:2**

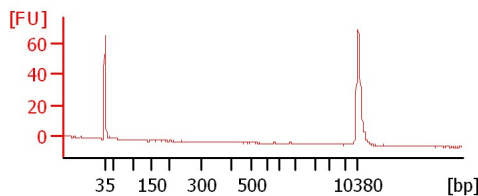
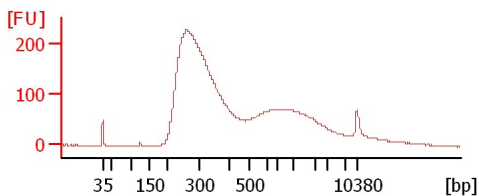
**PD130\_8BL 1:3**

**PD130\_9AL 1:3**



**PD130\_10BL 1:2**

**sample 11**



Assay Class: High Sensitivity DNA Assay  
Data Path: C:\...ents and Settings\Bioanalyzer\2013-07-22\2013-07-22\_003.xad

Created: 7/22/2013 4:17:51 PM  
Modified: 7/22/2013 5:00:32 PM

**Electrophoresis File Run Summary (Chip Summary)**

Sample Name	Sample Comment	Rest. Digest	Status	Observation	Result Label	Result Color
LIB S100-1		<input type="checkbox"/>	✓			
LIB S100-2		<input type="checkbox"/>	✓			
LHO Pool 1 1:2		<input type="checkbox"/>	✓			
EC		<input type="checkbox"/>	✓			
LHO Pool 1		<input type="checkbox"/>	✓			
PD130_4AL 1:3		<input type="checkbox"/>	✓			
PD130_7BL 1:2		<input type="checkbox"/>	✓			
PD130_8BL 1:3		<input type="checkbox"/>	✓			
PD130_9AL 1:3		<input type="checkbox"/>	✓			
PD130_10BL 1:2		<input type="checkbox"/>	✓			
sample 11		<input type="checkbox"/>	✓			
Ladder		<input type="checkbox"/>				

**Chip Lot #**

**Reagent Kit Lot #**

**Chip Comments :**

Assay Class: High Sensitivity DNA Assay  
 Data Path: C:\...ents and Settings\Bioanalyzer\2013-07-22\2013-07-22\_003.xad

Created: 7/22/2013 4:17:51 PM  
 Modified: 7/22/2013 5:00:32 PM

**Electrophoresis Assay Details**

**General Analysis Settings**

Number of Available Sample and Ladder Wells (Max.) : 12  
 Minimum Visible Range [s] : 32  
 Maximum Visible Range [s] : 138  
 Start Analysis Time Range [s] : 33  
 End Analysis Time Range [s] : 137.5  
 Ladder Concentration [pg/μl] : 1950  
 Uses Standard Area for Ladder Fragments  
 Lower Marker Concentration [pg/μl] : 125  
 Upper Marker Concentration [pg/μl] : 75  
 Used Upper Marker for Quantitation  
 Standard Curve Fit is Point to Point  
 Show Data Aligned to Lower and Upper Marker

**Integrator Settings**

Integration Start Time [s] : 33.05  
 Integration End Time [s] : 137  
 Slope Threshold : 0.8  
 Height Threshold [FU] : 5  
 Area Threshold : 0.1  
 Width Threshold [s] : 0.6  
 Baseline Plateau [s] : 0.5

**Filter Settings**

Filter Width [s] : 0.5  
 Polynomial Order : 4

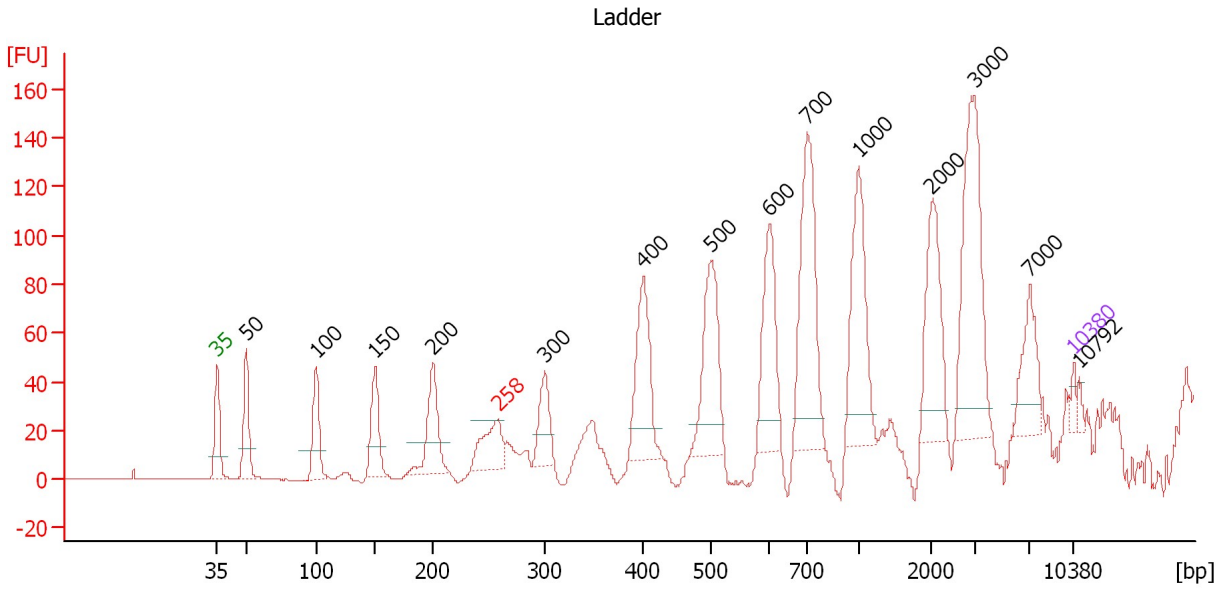
**Ladder**

Ladder Peak	Size	Area
1	35	160
2	50	210
3	100	208
4	150	221
5	200	242
6	300	270
7	400	305
8	500	306
9	600	336
10	700	321
11	1000	366
12	2000	413
13	3000	411
14	7000	400
15	10380	214

Assay Class: High Sensitivity DNA Assay  
 Data Path: C:\...ents and Settings\Bioanalyzer\2013-07-22\2013-07-22\_003.xad

Created: 7/22/2013 4:17:51 PM  
 Modified: 7/22/2013 5:00:32 PM

**Electropherogram Summary**



**Overall Results for Ladder**

Noise: 0.1

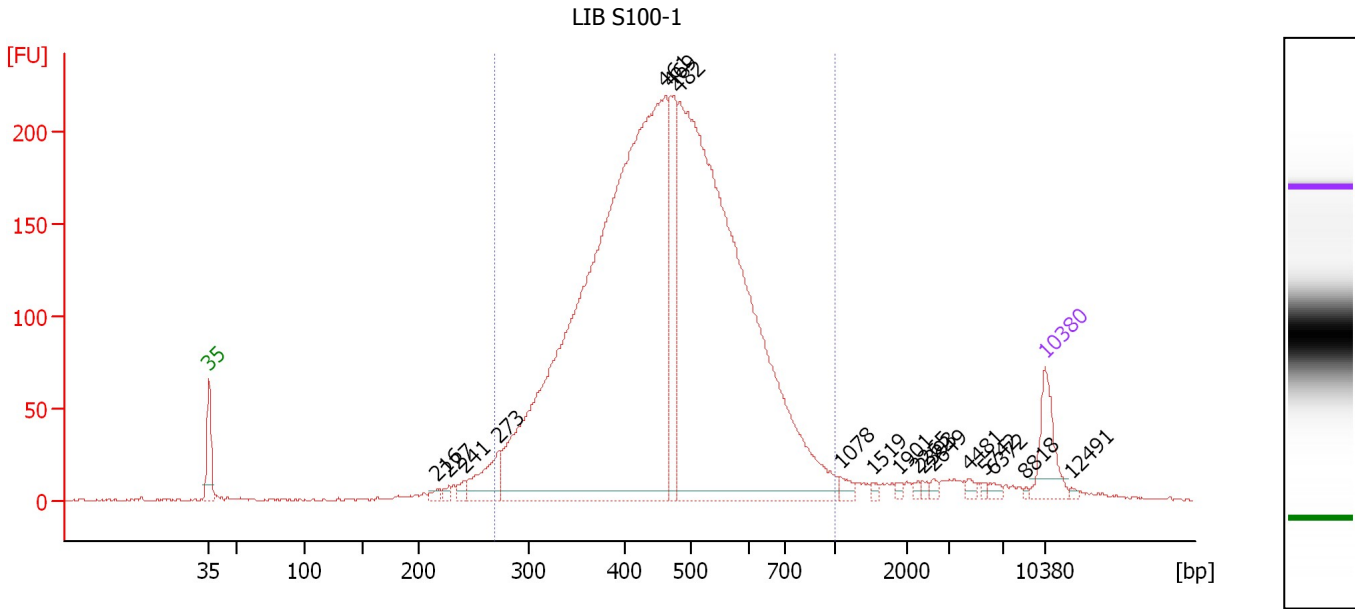
**Peak table for Ladder**

Peak	Size [bp]	Conc. [pg/μl]	Molarity [pmol/l]	Observations
1	35	125.00	5,411.3	Lower Marker
2	50	150.00	4,545.5	Ladder Peak
3	100	150.00	2,272.7	Ladder Peak
4	150	150.00	1,515.2	Ladder Peak
5	200	150.00	1,136.4	Ladder Peak
6	258	0.00	0.0	excluded peak
7	300	150.00	757.6	Ladder Peak
8	400	150.00	568.2	Ladder Peak
9	500	150.00	454.5	Ladder Peak
10	600	150.00	378.8	Ladder Peak
11	700	150.00	324.7	Ladder Peak
12	1,000	150.00	227.3	Ladder Peak
13	2,000	150.00	113.6	Ladder Peak
14	3,000	150.00	75.8	Ladder Peak
15	7,000	150.00	32.5	Ladder Peak
16	10,380	75.00	10.9	Upper Marker
17	10,792	0.00	0.0	

Assay Class: High Sensitivity DNA Assay  
 Data Path: C:\...ents and Settings\Bioanalyzer\2013-07-22\2013-07-22\_003.xad

Created: 7/22/2013 4:17:51 PM  
 Modified: 7/22/2013 5:00:32 PM

**Electropherogram Summary Continued ...**



**Overall Results for sample 1 : LIB S100-1**

Number of peaks found: 18      Corr. Area 1: 4,166.9  
 Noise: 0.6

**Peak table for sample 1 : LIB S100-1**

Peak	Size [bp]	Conc. [pg/μl]	Molarity [pmol/l]	Observations
1	35	125.00	5,411.3	Lower Marker
2	216	11.61	81.3	
3	227	12.54	83.7	
4	241	15.98	100.4	
5	273	106.26	589.9	
6	461	2,592.29	8,516.0	
7	469	250.86	809.9	
8	482	2,093.54	6,578.4	
9	1,078	16.89	23.7	
10	1,519	6.49	6.5	
11	1,901	5.94	4.7	
12	2,265	4.96	3.3	
13	2,393	6.18	3.9	
14	2,649	6.89	3.9	
15	4,481	9.37	3.2	
16	5,742	4.55	1.2	
17	6,372	8.79	2.1	
18	8,818	2.97	0.5	
19	10,380	75.00	10.9	Upper Marker
20	12,491	0.00	0.0	

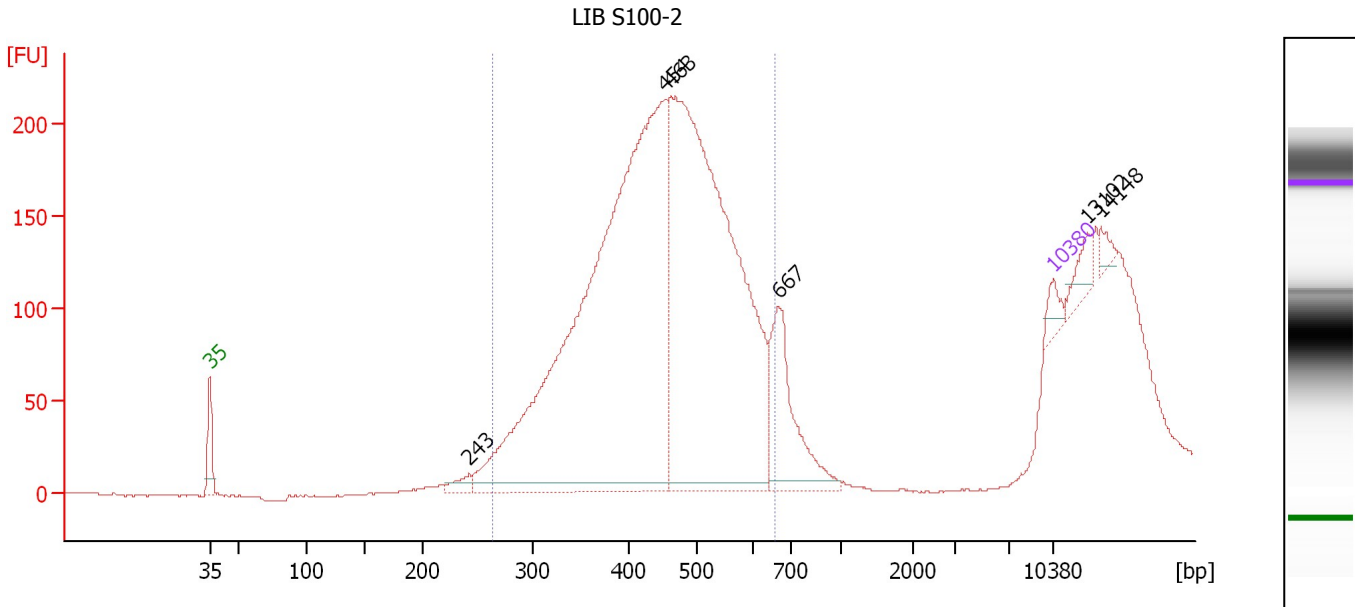
**Region table for sample 1 : LIB S100-1**

From [bp]	To [bp]	Average Size [bp]	Molarity [pmol/l]	Conc. [pg/μl]	Corr. Area	% of Total	Size distribution in CV [%]	Color
270	1,000	472	17,424.8	5,033.25	4,166.9	94	24.4	Blue

Assay Class: High Sensitivity DNA Assay  
 Data Path: C:\...ents and Settings\Bioanalyzer\2013-07-22\2013-07-22\_003.xad

Created: 7/22/2013 4:17:51 PM  
 Modified: 7/22/2013 5:00:32 PM

**Electropherogram Summary Continued ...**



**Overall Results for sample 2 : LIB S100-2**

Number of peaks found: 6                      Corr. Area 1: 3,478.1  
 Noise: 0.4

**Peak table for sample 2 : LIB S100-2**

Peak	Size [bp]	Conc. [pg/μl]	Molarity [pmol/l]	Observations
1	35	125.00	5,411.3	Lower Marker
2	243	84.71	528.8	
3	454	6,500.60	21,697.5	
4	463	5,224.22	17,105.7	
5	667	790.14	1,795.0	
6	10,380	75.00	10.9	Upper Marker
7	13,102	0.00	0.0	
8	14,148	0.00	0.0	

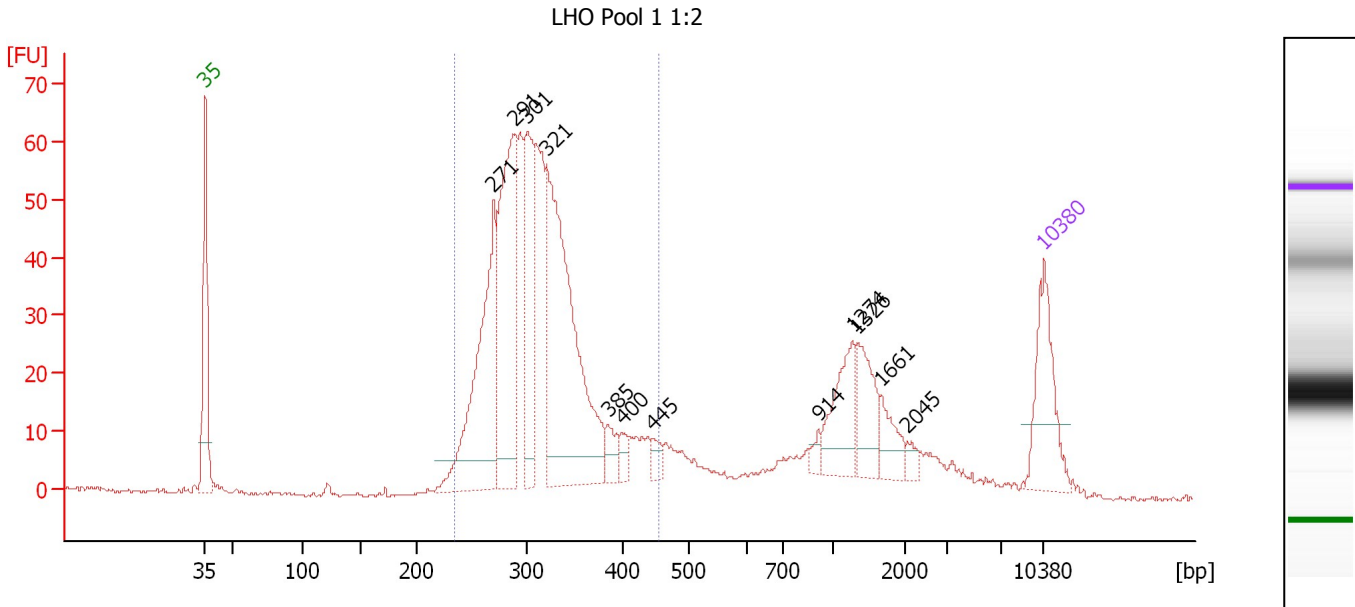
**Region table for sample 2 : LIB S100-2**

From [bp]	To [bp]	Average Size [bp]	Molarity [pmol/l]	Conc. [pg/μl]	Corr. Area	% of Total	Size distribution in CV [%]	Color
264	655	451	39,028.3	11,007.24	3,478.1	81	19.1	Blue

Assay Class: High Sensitivity DNA Assay  
 Data Path: C:\...ents and Settings\Bioanalyzer\2013-07-22\2013-07-22\_003.xad

Created: 7/22/2013 4:17:51 PM  
 Modified: 7/22/2013 5:00:32 PM

**Electropherogram Summary Continued ...**



**Overall Results for sample 3 : LHO Pool 1 1:2**

Number of peaks found: 12                      Corr. Area 1: 766.1  
 Noise: 0.3

**Peak table for sample 3 : LHO Pool 1 1:2**

Peak	Size [bp]	Conc. [pg/μl]	Molarity [pmol/l]	Observations
1	35	125.00	5,411.3	Lower Marker
2	271	277.50	1,553.6	
3	291	275.82	1,438.2	
4	301	153.04	769.2	
5	321	411.37	1,939.8	
6	385	25.19	99.0	
7	400	13.85	52.4	
8	445	14.22	48.4	
9	914	9.39	15.6	
10	1,274	68.51	81.5	
11	1,326	56.81	64.9	
12	1,661	30.32	27.7	
13	2,045	9.02	6.7	
14	10,380	75.00	10.9	Upper Marker

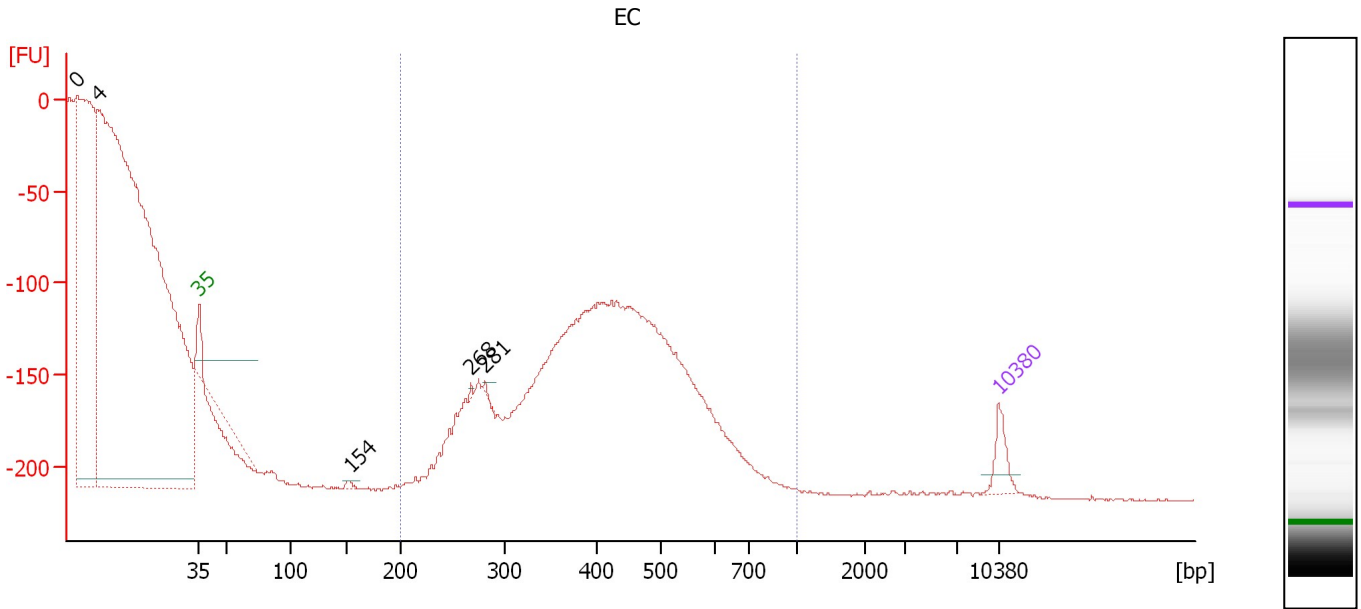
**Region table for sample 3 : LHO Pool 1 1:2**

From [bp]	To [bp]	Average Size [bp]	Molarity [pmol/l]	Conc. [pg/μl]	Corr. Area	% of Total	Size distribution in CV [%]	Color
236	454	314	7,476.4	1,516.70	766.1	73	13.9	Blue

Assay Class: High Sensitivity DNA Assay  
 Data Path: C:\...ents and Settings\Bioanalyzer\2013-07-22\2013-07-22\_003.xad

Created: 7/22/2013 4:17:51 PM  
 Modified: 7/22/2013 5:00:32 PM

**Electropherogram Summary Continued ...**



**Overall Results for sample 4 : EC**

Number of peaks found: 5                      Corr. Area 1: 0.0  
 Noise: 0.6

**Peak table for sample 4 : EC**

Peak	Size [bp]	Conc. [pg/μl]	Molarity [pmol/l]	Observations
1	0	0.00	0.0	
2	4	0.00	0.0	
3	35	125.00	5,411.3	Lower Marker
4	154	18.58	183.4	
5	268	7.73	43.7	
6	281	6.74	36.3	
7	10,380	75.00	10.9	Upper Marker

**Region table for sample 4 : EC**

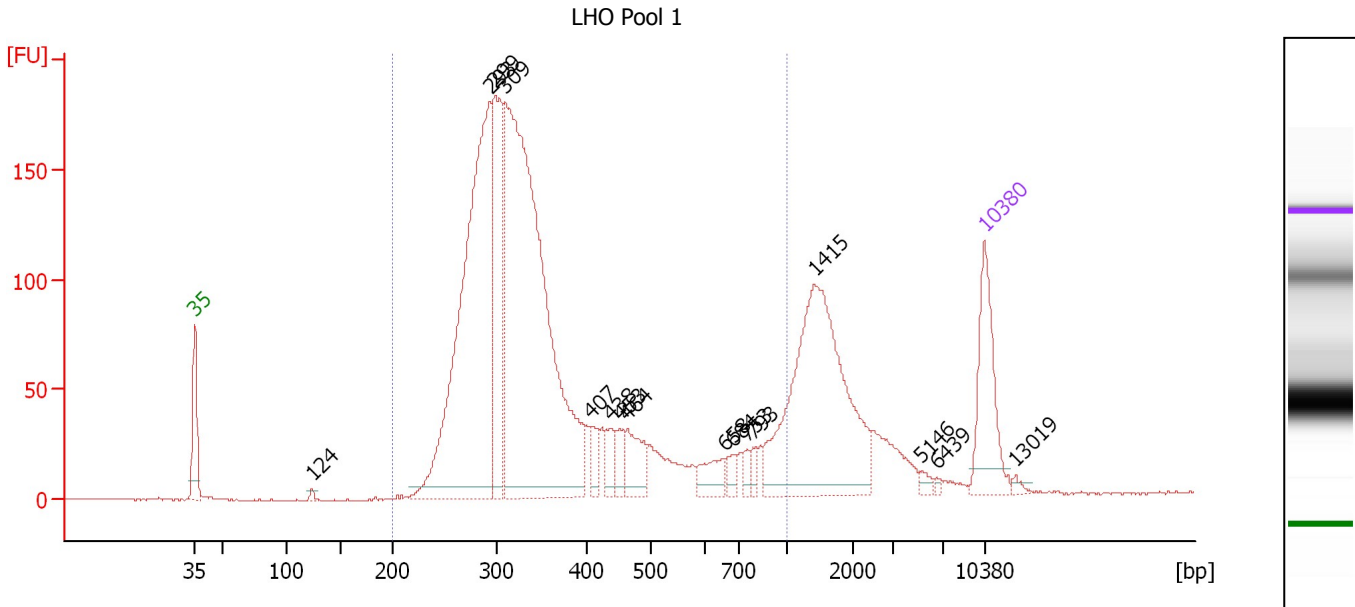
From [bp]	To [bp]	Average Size [bp]	Molarity [pmol/l]	Conc. [pg/μl]	Corr. Area	% of Total	Size distribution in CV [%]	Color
200	1,000	0	0.0	0.00	0.0	0	0.0	Blue



Assay Class: High Sensitivity DNA Assay  
 Data Path: C:\...ents and Settings\Bioanalyzer\2013-07-22\2013-07-22\_003.xad

Created: 7/22/2013 4:17:51 PM  
 Modified: 7/22/2013 5:00:32 PM

**Electropherogram Summary Continued ...**



**Overall Results for sample 5 : LHO Pool 1**

Number of peaks found: 16      Corr. Area 1: 2,564.3  
 Noise: 0.3

**Peak table for sample 5 : LHO Pool 1**

Peak	Size [bp]	Conc. [pg/μl]	Molarity [pmol/l]	Observations
1	35	125.00	5,411.3	Lower Marker
2	124	4.66	57.1	
3	293	603.41	3,116.4	
4	299	191.55	972.1	
5	309	799.91	3,923.6	
6	407	18.45	68.8	
7	438	20.16	69.7	
8	453	20.93	70.0	
9	464	45.33	148.1	
10	658	28.18	64.9	
11	684	12.48	27.6	
12	753	8.84	17.8	
13	793	9.01	17.2	
14	1,415	293.47	314.3	
15	5,146	5.29	1.6	
16	6,439	2.28	0.5	
17	10,380	75.00	10.9	Upper Marker
18	13,019	0.00	0.0	

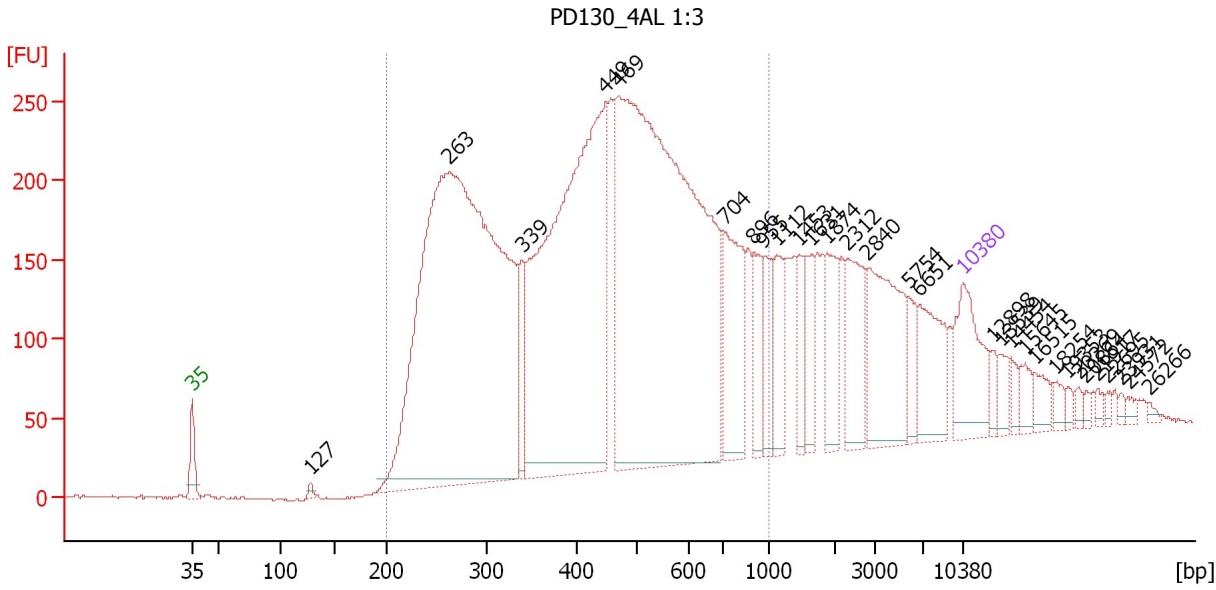
**Region table for sample 5 : LHO Pool 1**

From [bp]	To [bp]	Average Size [bp]	Molarity [pmol/l]	Conc. [pg/μl]	Corr. Area	% of Total	Size distribution in CV [%]	Color
200	1,000	374	8,645.4	1,880.45	2,564.3	81	40.0	Blue

Assay Class: High Sensitivity DNA Assay  
 Data Path: C:\...ents and Settings\Bioanalyzer\2013-07-22\2013-07-22\_003.xad

Created: 7/22/2013 4:17:51 PM  
 Modified: 7/22/2013 5:00:32 PM

**Electropherogram Summary Continued ...**



**Overall Results for sample 6 : PD130 4AL 1:3**

Number of peaks found: 30      Corr. Area 1: 7,105.7  
 Noise: 0.9

**Peak table for sample 6 : PD130 4AL 1:3**

Peak	Size [bp]	Conc. [pg/μl]	Molarity [pmol/l]	Observations
1	35	125.00	5,411.3	Lower Marker
2	127	6.15	73.2	
3	263	1,409.73	8,135.7	
4	339	60.12	268.6	
5	449	789.19	2,665.3	
6	469	1,092.83	3,532.5	
7	704	134.46	289.3	
8	896	51.68	87.3	
9	955	46.46	73.7	
10	1,112	53.99	73.5	
11	1,453	34.48	36.0	
12	1,631	39.93	37.1	
13	1,874	56.68	45.8	
14	2,312	75.70	49.6	
15	2,840	126.19	67.3	
16	5,754	27.47	7.2	
17	6,651	71.57	16.3	
18	10,380	75.00	10.9	Upper Marker
19	12,898	0.00	0.0	
20	13,539	0.00	0.0	
21	14,454	0.00	0.0	
22	15,645	0.00	0.0	
23	16,515	0.00	0.0	
24	18,254	0.00	0.0	
25	19,353	0.00	0.0	
26	20,269	0.00	0.0	


Assay Class: High Sensitivity DNA Assay  
Data Path: C:\...ents and Settings\Bioanalyzer\2013-07-22\2013-07-22\_003.xad

Created: 7/22/2013 4:17:51 PM  
Modified: 7/22/2013 5:00:32 PM

**Electropherogram Summary Continued ...****... Peak table for sample 6 : PD130 4AL 1:3**

Peak	Size [bp]	Conc. [pg/μl]	Molarity [pmol/l]	Observations
27	20,864	0.00	0.0	
28	21,917	0.00	0.0	
29	22,695	0.00	0.0	
30	23,931	0.00	0.0	
31	24,572	0.00	0.0	
32	26,266	0.00	0.0	

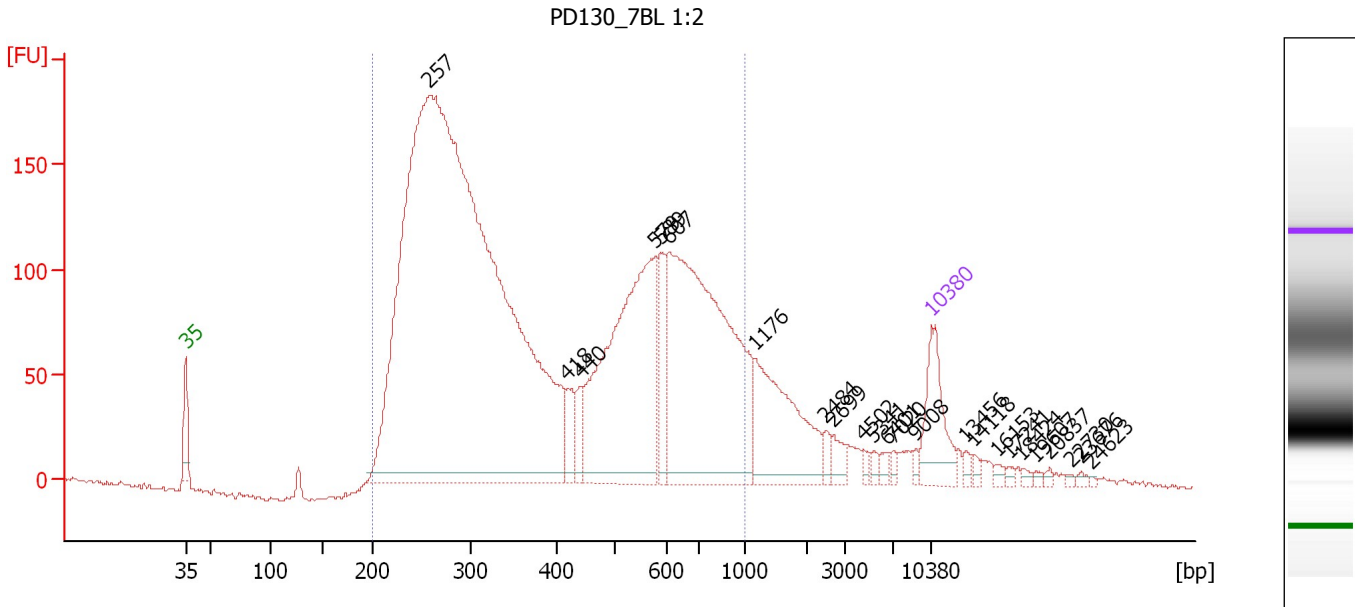
**Region table for sample 6 : PD130 4AL 1:3**

From [bp]	To [bp]	Average Size [bp]	Molarity [pmol/l]	Conc. [pg/μl]	Corr. Area	% of Total	Size distribution in CV [%]	Color
200	1,000	461	13,874.3	3,457.21	7,105.7	77	38.3	

Assay Class: High Sensitivity DNA Assay  
 Data Path: C:\...ents and Settings\Bioanalyzer\2013-07-22\2013-07-22\_003.xad

Created: 7/22/2013 4:17:51 PM  
 Modified: 7/22/2013 5:00:32 PM

**Electropherogram Summary Continued ...**



**Overall Results for sample 7 : PD130\_7BL 1:2**

Number of peaks found: 24                      Corr. Area 1: 4,348.9  
 Noise: 0.9

**Peak table for sample 7 : PD130\_7BL 1:2**

Peak	Size [bp]	Conc. [pg/μl]	Molarity [pmol/l]	Observations
1	35	125.00	5,411.3	Lower Marker
2	257	2,818.97	16,591.1	
3	418	41.83	151.6	
4	440	32.61	112.3	
5	579	474.65	1,242.8	
6	589	70.52	181.4	
7	607	609.91	1,521.3	
8	1,176	183.37	236.2	
9	2,484	12.51	7.6	
10	2,699	16.80	9.4	
11	4,502	6.18	2.1	
12	5,341	5.91	1.7	
13	6,401	8.40	2.0	
14	7,020	6.40	1.4	
15	9,008	5.91	1.0	
16	10,380	75.00	10.9	Upper Marker
17	13,456	0.00	0.0	
18	14,118	0.00	0.0	
19	16,153	0.00	0.0	
20	17,241	0.00	0.0	
21	18,424	0.00	0.0	
22	19,607	0.00	0.0	
23	20,837	0.00	0.0	
24	22,730	0.00	0.0	
25	23,676	0.00	0.0	
26	24,623	0.00	0.0	

Assay Class: High Sensitivity DNA Assay  
Data Path: C:\...ents and Settings\Bioanalyzer\2013-07-22\2013-07-22\_003.xad

Created: 7/22/2013 4:17:51 PM  
Modified: 7/22/2013 5:00:32 PM

**Electropherogram Summary Continued ...**

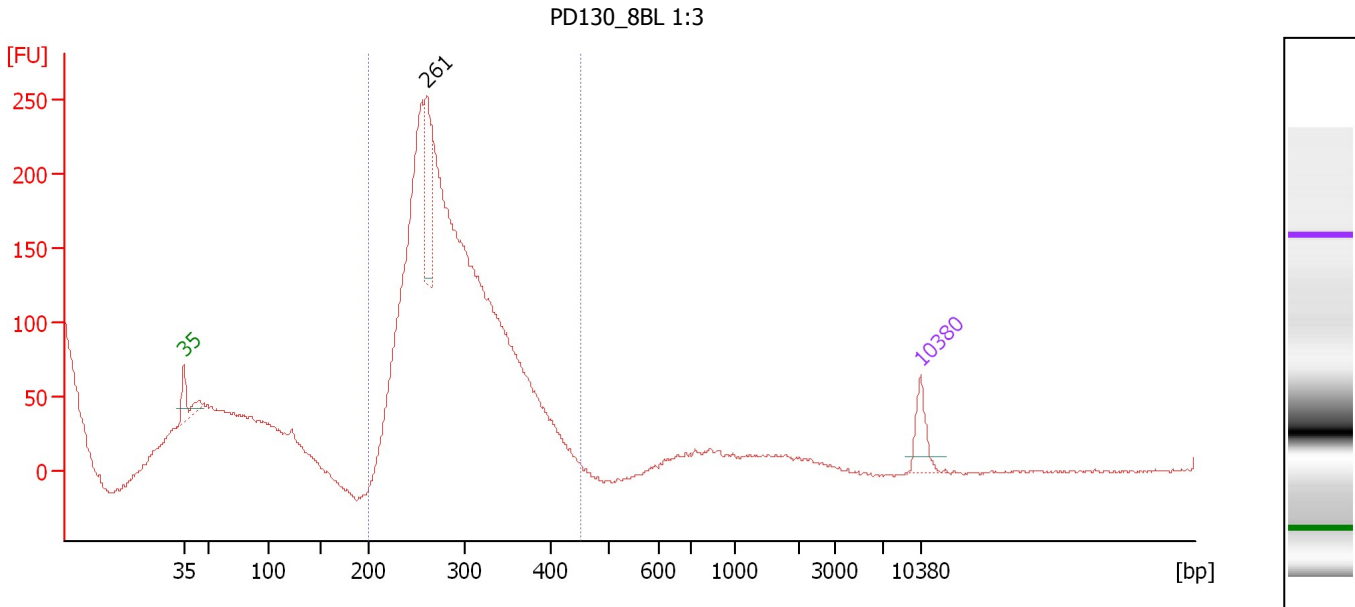
... Region table for sample 7 : PD130\_7BL 1:2

From [bp]	To [bp]	Average Size [bp]	Molarity [pmol/l]	Conc. [pg/μl]	Corr. Area	% of Total	Size distribution in CV [%]	Color
200	1,000	433	17,119.3	3,825.36	4,348.9	88	45.0	■

Assay Class: High Sensitivity DNA Assay  
 Data Path: C:\...ents and Settings\Bioanalyzer\2013-07-22\2013-07-22\_003.xad

Created: 7/22/2013 4:17:51 PM  
 Modified: 7/22/2013 5:00:32 PM

**Electropherogram Summary Continued ...**



**Overall Results for sample 8 : PD130\_8BL 1:3**

Number of peaks found: 1      Corr. Area 1: 1,956.8  
 Noise: 1.0

**Peak table for sample 8 : PD130\_8BL 1:3**

Peak	Size [bp]	Conc. [pg/μl]	Molarity [pmol/l]	Observations
1	35	125.00	5,411.3	Lower Marker
2	261	282.04	1,640.4	
3	10,380	75.00	10.9	Upper Marker

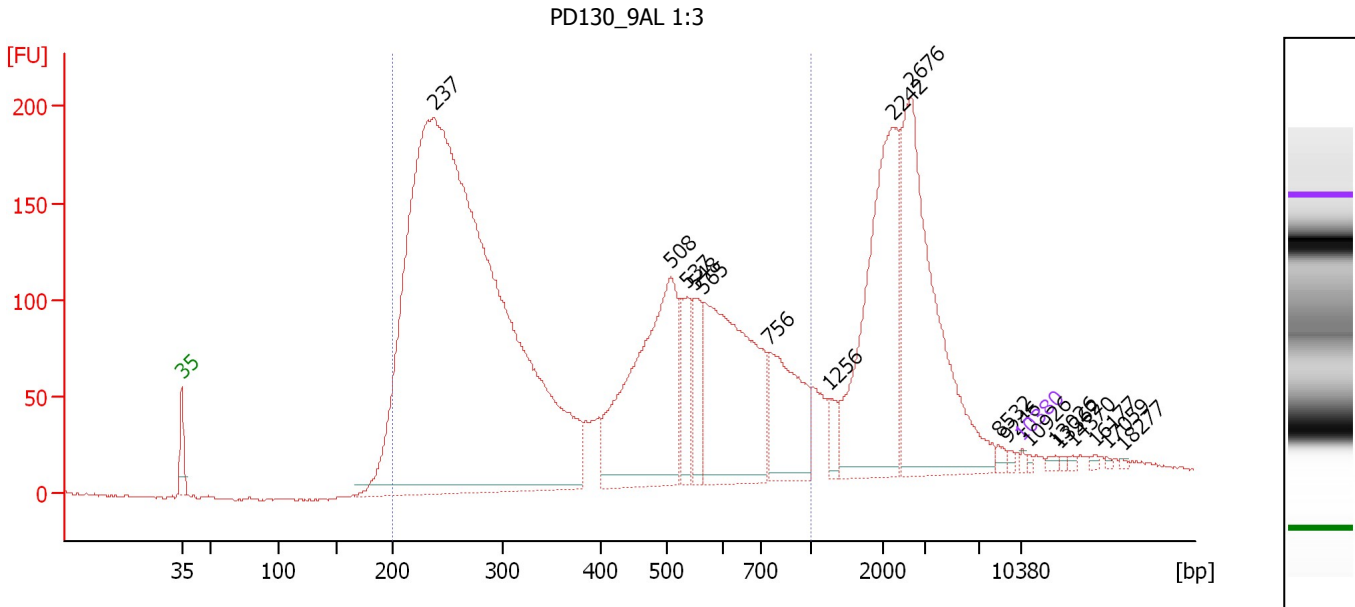
**Region table for sample 8 : PD130\_8BL 1:3**

From [bp]	To [bp]	Average Size [bp]	Molarity [pmol/l]	Conc. [pg/μl]	Corr. Area	% of Total	Size distribution in CV [%]	Color
200	451	284	20,407.7	3,752.09	1,956.8	100	13.1	Blue

Assay Class: High Sensitivity DNA Assay  
 Data Path: C:\...ents and Settings\Bioanalyzer\2013-07-22\2013-07-22\_003.xad

Created: 7/22/2013 4:17:51 PM  
 Modified: 7/22/2013 5:00:32 PM

**Electropherogram Summary Continued ...**



**Overall Results for sample 9 : PD130\_9AL 1:3**

Number of peaks found: 18      Corr. Area 1: 4,366.5  
 Noise: 0.7

**Peak table for sample 9 : PD130\_9AL 1:3**

Peak	Size [bp]	Conc. [pg/μl]	Molarity [pmol/l]	Observations
1	35	125.00	5,411.3	Lower Marker
2	237	70,857.52	452,718.5	
3	508	11,205.14	33,440.8	
4	537	1,873.38	5,282.5	
5	548	1,921.87	5,309.4	
6	565	9,570.26	25,658.8	
7	756	4,138.92	8,298.8	
8	1,256	553.92	668.0	
9	2,242	8,199.99	5,540.6	
10	2,676	9,243.15	5,234.4	
11	8,532	157.47	28.0	
12	9,246	93.12	15.3	
13	10,380	75.00	10.9	Upper Marker
14	10,926	0.00	0.0	
15	13,026	0.00	0.0	
16	13,362	0.00	0.0	
17	14,370	0.00	0.0	
18	16,177	0.00	0.0	
19	17,059	0.00	0.0	
20	18,277	0.00	0.0	

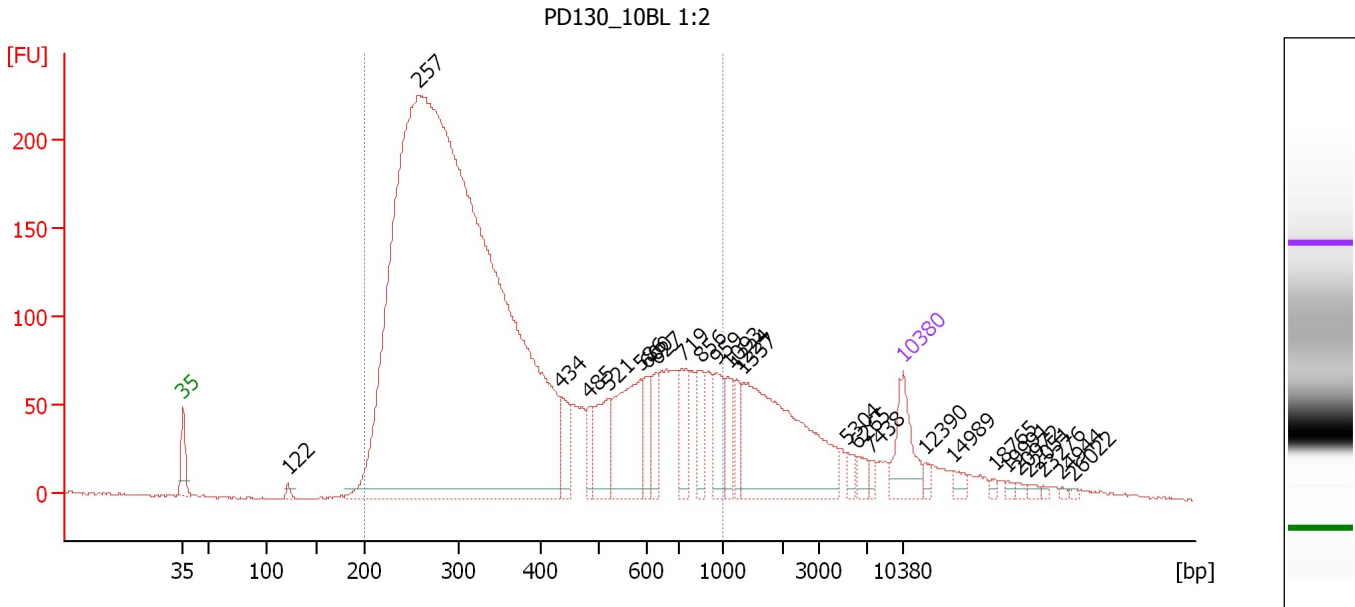
**Region table for sample 9 : PD130\_9AL 1:3**

From [bp]	To [bp]	Average Size [bp]	Molarity [pmol/l]	Conc. [pg/μl]	Corr. Area	% of Total	Size distribution in CV [%]	Color
200	1,000	408	441,995.4	91,750.20	4,366.5	74	46.5	Blue

Assay Class: High Sensitivity DNA Assay  
 Data Path: C:\...ents and Settings\Bioanalyzer\2013-07-22\2013-07-22\_003.xad

Created: 7/22/2013 4:17:51 PM  
 Modified: 7/22/2013 5:00:32 PM

**Electropherogram Summary Continued ...**



**Overall Results for sample 10 : PD130 10BL 1:2**

Number of peaks found: 26                      Corr. Area 1: 4,811.6  
 Noise: 0.7

**Peak table for sample 10 : PD130 10BL 1:2**

Peak	Size [bp]	Conc. [pg/μl]	Molarity [pmol/l]	Observations
1	35	125.00	5,411.3	Lower Marker
2	122	9.36	116.0	
3	257	4,502.51	26,557.6	
4	434	61.63	215.1	
5	485	42.92	134.2	
6	521	104.57	304.0	
7	586	185.30	479.0	
8	600	48.77	123.1	
9	627	50.06	120.9	
10	719	69.98	147.4	
11	856	60.60	107.3	
12	959	70.91	112.1	
13	1,093	43.28	60.0	
14	1,224	35.65	44.1	
15	1,337	354.80	402.2	
16	5,304	15.69	4.5	
17	6,265	18.10	4.4	
18	7,438	9.35	1.9	
19	10,380	75.00	10.9	Upper Marker
20	12,390	0.00	0.0	
21	14,989	0.00	0.0	
22	18,765	0.00	0.0	
23	19,991	0.00	0.0	
24	20,972	0.00	0.0	
25	22,051	0.00	0.0	
26	23,276	0.00	0.0	




Assay Class: High Sensitivity DNA Assay  
Data Path: C:\...ents and Settings\Bioanalyzer\2013-07-22\2013-07-22\_003.xad

Created: 7/22/2013 4:17:51 PM  
Modified: 7/22/2013 5:00:32 PM

**Electropherogram Summary Continued ...****... Peak table for sample 10 : PD130\_10BL 1:2**

Peak	Size [bp]	Conc. [pg/ $\mu$ l]	Molarity [pmol/l]	Observations
27	24,944	0.00	0.0	
28	26,022	0.00	0.0	

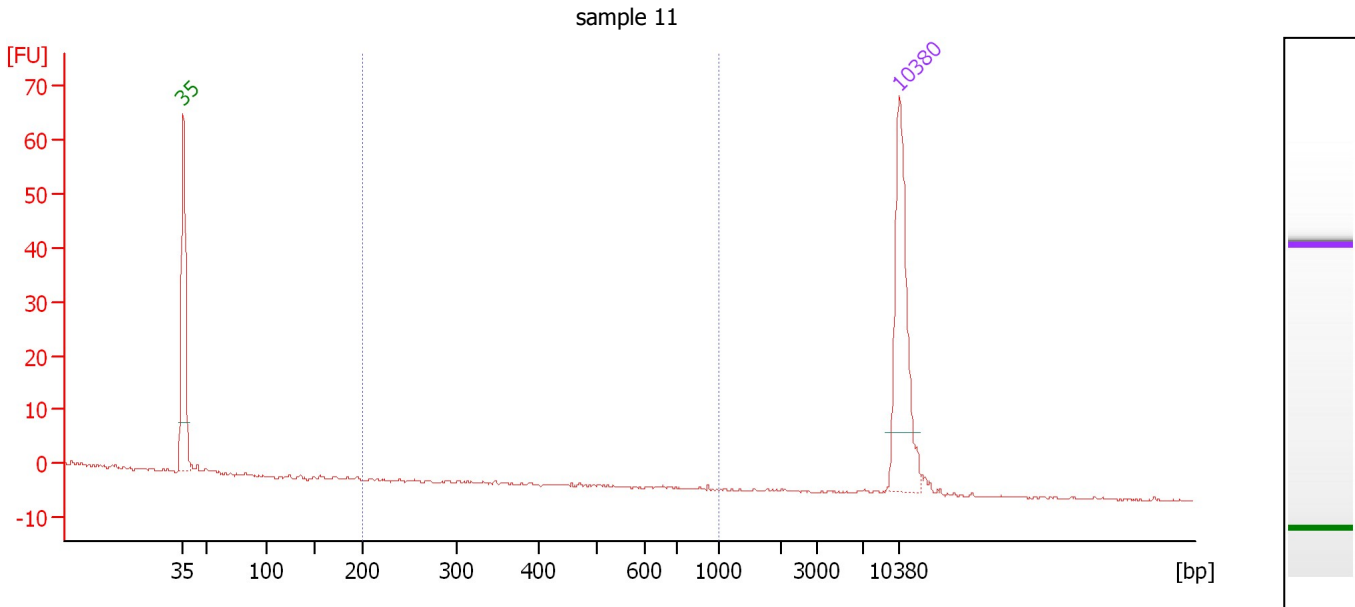
**Region table for sample 10 : PD130\_10BL 1:2**

From [bp]	To [bp]	Average Size [bp]	Molarity [pmol/l]	Conc. [pg/ $\mu$ l]	Corr. Area	% of Total	Size distribution in CV [%]	Color
200	1,000	393	24,017.9	5,064.71	4,811.6	85	46.0	

Assay Class: High Sensitivity DNA Assay  
 Data Path: C:\...ents and Settings\Bioanalyzer\2013-07-22\2013-07-22\_003.xad

Created: 7/22/2013 4:17:51 PM  
 Modified: 7/22/2013 5:00:32 PM

**Electropherogram Summary Continued ...**



**Overall Results for sample 11 : sample 11**

Number of peaks found: 0                      Corr. Area 1: 0.0  
 Noise: 0.2

**Peak table for sample 11 : sample 11**

Peak	Size [bp]	Conc. [pg/μl]	Molarity [pmol/l]	Observations
1	35	125.00	5,411.3	Lower Marker
2	10,380	75.00	10.9	Upper Marker

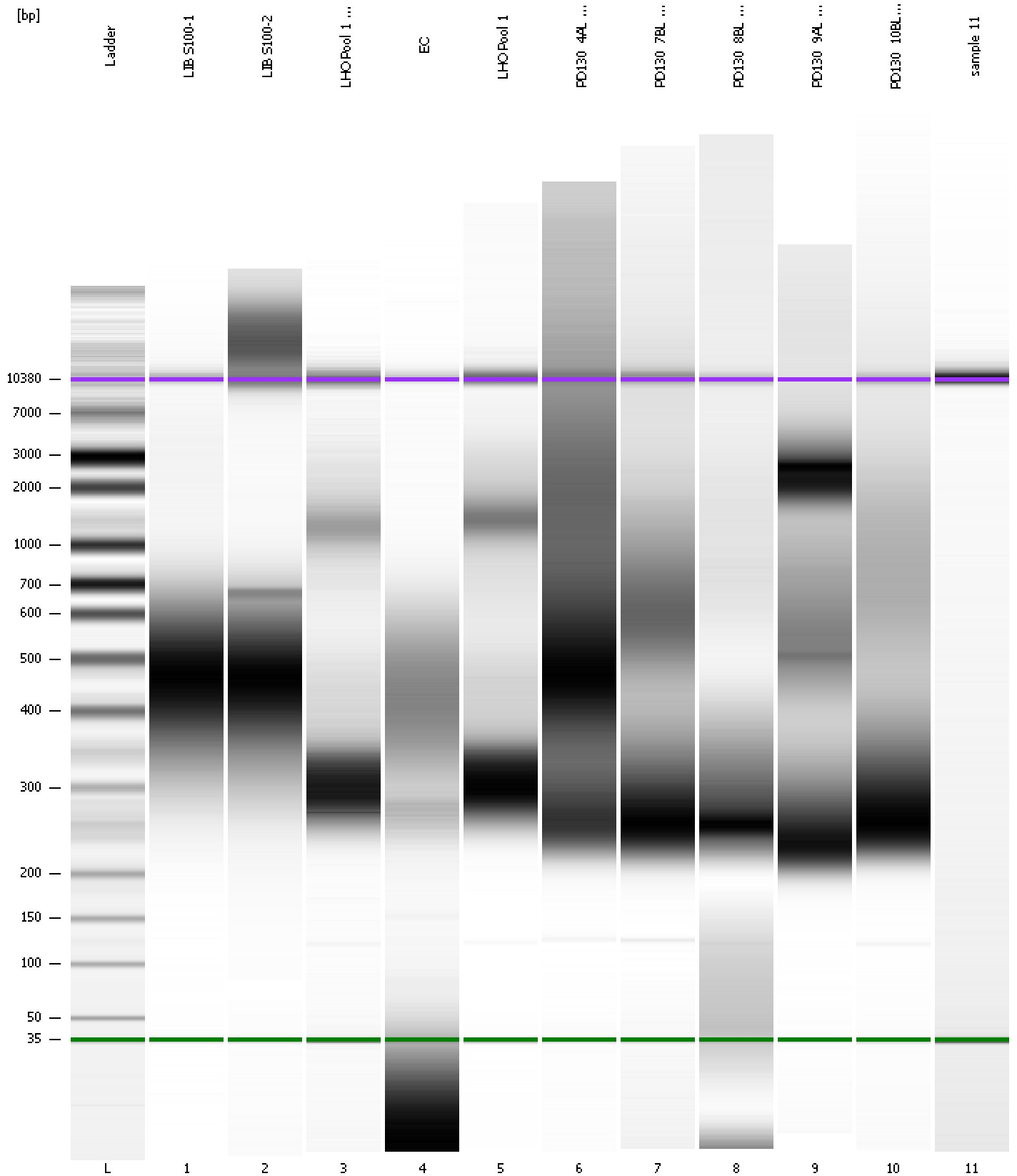
**Region table for sample 11 : sample 11**

From [bp]	To [bp]	Average Size [bp]	Molarity [pmol/l]	Conc. [pg/μl]	Corr. Area	% of Total	Size distribution in CV [%]	Color
200	1,000	920	0.0	0.00	0.0	0	0.2	Blue

Assay Class: High Sensitivity DNA Assay  
Data Path: C:\...ents and Settings\Bioanalyzer\2013-07-22\2013-07-22\_003.xad

Created: 7/22/2013 4:17:51 PM  
Modified: 7/22/2013 5:00:32 PM

**Gel Image**



Assay Class: High Sensitivity DNA Assay  
 Data Path: C:\...ents and Settings\Bioanalyzer\2013-07-22\2013-07-22\_003.xad

Created: 7/22/2013 4:17:51 PM  
 Modified: 7/22/2013 5:00:32 PM

**Run Logbook**

Description	Number	Source	Category	Sub Category	Time	Time Zone	User	Host
Run ended on port 1 (Number of wells acquired: 12)		Instrument	Run		7/22/2013 4:58:19 PM	(GMT --07:00) Pacific Standard Time	UC Davis	D8XSMGH1
Run started on port 1 (File: C:\Documents and Settings\Bioanalyzer\2013-07-22\2013-07-22_003.xad)		Instrument	Run		7/22/2013 4:17:56 PM	(GMT --07:00) Pacific Standard Time	UC Davis	D8XSMGH1
Product Number : G2938B		Instrument	Run		7/22/2013 4:17:56 PM	(GMT --07:00) Pacific Standard Time	UC Davis	D8XSMGH1
Name :		Instrument	Run		7/22/2013 4:17:56 PM	(GMT --07:00) Pacific Standard Time	UC Davis	D8XSMGH1
Vendor : Agilent Technologies		Instrument	Run		7/22/2013 4:17:56 PM	(GMT --07:00) Pacific Standard Time	UC Davis	D8XSMGH1
Serial# : DE13701086		Instrument	Run		7/22/2013 4:17:56 PM	(GMT --07:00) Pacific Standard Time	UC Davis	D8XSMGH1
Firmware : C.01.069		Instrument	Run		7/22/2013 4:17:56 PM	(GMT --07:00) Pacific Standard Time	UC Davis	D8XSMGH1
Cartridge : Electrode		Instrument	Run		7/22/2013 4:17:56 PM	(GMT --07:00) Pacific Standard Time	UC Davis	D8XSMGH1