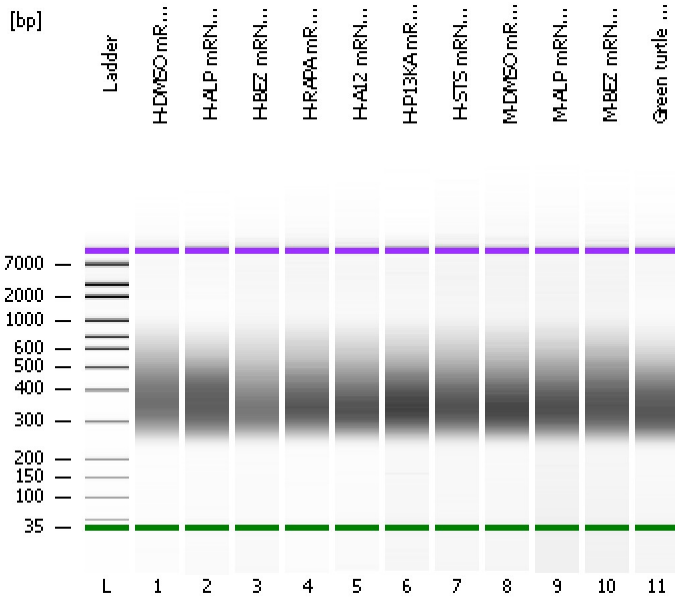


Assay Class: High Sensitivity DNA Assay
Data Path: C:\...ents and Settings\Bioanalyzer\2013-07-24\2013-07-24_001.xad

Created: 7/24/2013 10:21:49 AM
Modified: 7/24/2013 12:39:30 PM

Electrophoresis File Run Summary



Instrument Information:

Instrument Name: DE13701086 Firmware: C.01.069
Serial#: DE13701086 Type: G2938B

Assay Information:

Assay Origin Path: C:\Program Files\Agilent\2100 bioanalyzer\2100 expert\assays\dsDNA\High Sensitivity DNA.xsy
Assay Class: High Sensitivity DNA Assay
Version: 1.03
Assay Comments: Copyright © 2003-2010 Agilent Technologies

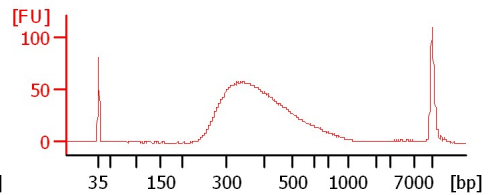
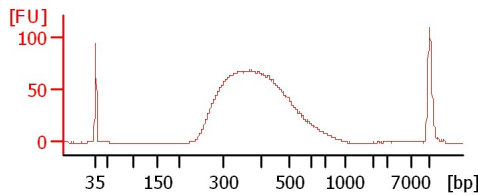
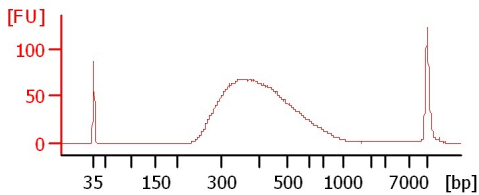
Chip Information:

Chip Lot #:
Reagent Kit Lot #:
Chip Comments:

H-DMSO mRNA Lib 1:20

H-ALP mRNA Lib 1:14

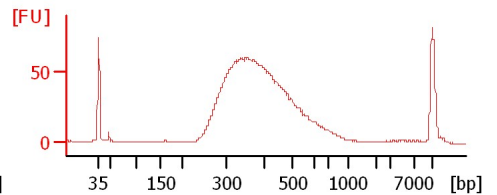
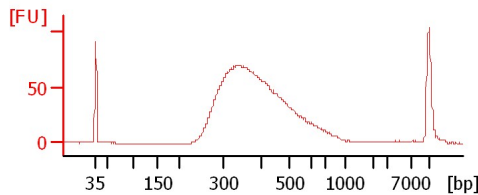
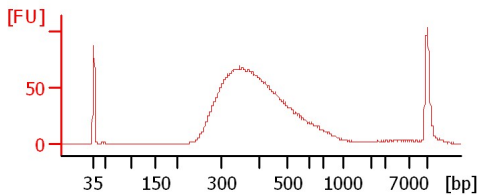
H-BEZ mRNA Lib 1:23



H-RAPA mRNA Lib 1:21

H-A12 mRNA Lib 1:23

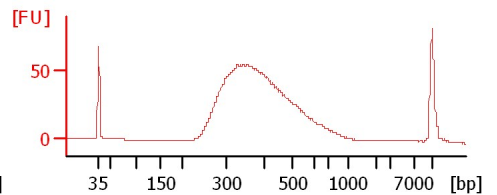
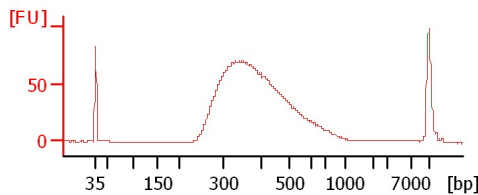
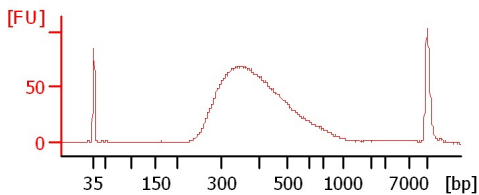
H-P13KA mRNA Lib 1:19



H-ST5 mRNA Lib 1:21

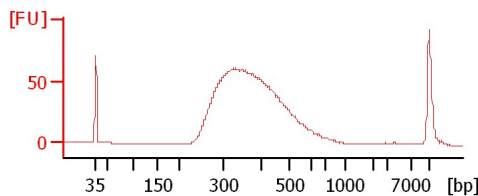
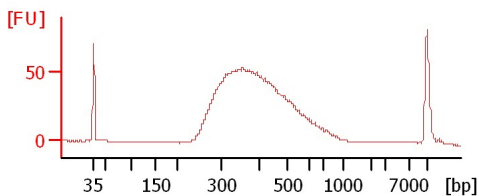
M-DMSO mRNA Lib 1:21

M-ALP mRNA Lib 1:20



M-BEZ mRNA Lib 1:22

Green turtle organs mRNA Lib 1L16



Assay Class: High Sensitivity DNA Assay
Data Path: C:\...ents and Settings\Bioanalyzer\2013-07-24\2013-07-24_001.xad

Created: 7/24/2013 10:21:49 AM
Modified: 7/24/2013 12:39:30 PM

Electrophoresis File Run Summary (Chip Summary)

Sample Name	Sample Comment	Rest. Digest	Status	Observation	Result Label	Result Color
H-DMSO mRNA Lib 1:20		<input type="checkbox"/>	✓			
H-ALP mRNA Lib 1:14		<input type="checkbox"/>	✓			
H-BEZ mRNA Lib 1:23		<input type="checkbox"/>	✓			
H-RAPA mRNA Lib 1:21		<input type="checkbox"/>	✓			
H-A12 mRNA Lib 1:23		<input type="checkbox"/>	✓			
H-P13KA mRNA Lib 1:19		<input type="checkbox"/>	✓			
H-ST5 mRNA Lib 1:21		<input type="checkbox"/>	✓			
M-DMSO mRNA Lib 1:21		<input type="checkbox"/>	✓			
M-ALP mRNA Lib 1:20		<input type="checkbox"/>	✓			
M-BEZ mRNA Lib 1:22		<input type="checkbox"/>	✓			
Green turtle organs mRNA Lib 1L16		<input type="checkbox"/>	✓			
Ladder		<input type="checkbox"/>	✓			

Chip Lot #

Reagent Kit Lot #

Chip Comments :

Assay Class: High Sensitivity DNA Assay
Data Path: C:\...ents and Settings\Bioanalyzer\2013-07-24\2013-07-24_001.xad

Created: 7/24/2013 10:21:49 AM
Modified: 7/24/2013 12:39:30 PM

Electrophoresis Assay Details

General Analysis Settings

Number of Available Sample and Ladder Wells (Max.) : 12
Minimum Visible Range [s] : 32
Maximum Visible Range [s] : 138
Start Analysis Time Range [s] : 33
End Analysis Time Range [s] : 137.5
Ladder Concentration [pg/μl] : 1950
Uses Standard Area for Ladder Fragments
Lower Marker Concentration [pg/μl] : 125
Upper Marker Concentration [pg/μl] : 75
Used Upper Marker for Quantitation
Standard Curve Fit is Point to Point
Show Data Aligned to Lower and Upper Marker

Integrator Settings

Integration Start Time [s] : 33.05
Integration End Time [s] : 137
Slope Threshold : 0.8
Height Threshold [FU] : 5
Area Threshold : 0.1
Width Threshold [s] : 0.6
Baseline Plateau [s] : 0.5

Filter Settings

Filter Width [s] : 0.5
Polynomial Order : 4

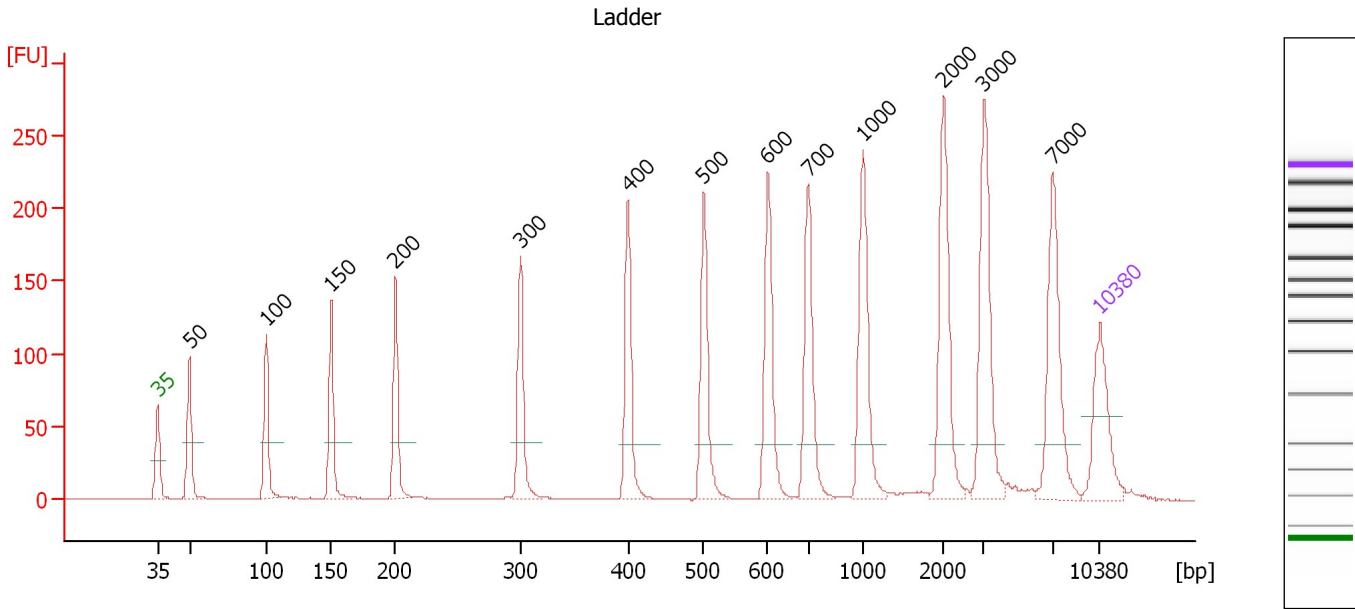
Ladder

Ladder Peak	Size	Area
1	35	160
2	50	210
3	100	208
4	150	221
5	200	242
6	300	270
7	400	305
8	500	306
9	600	336
10	700	321
11	1000	366
12	2000	413
13	3000	411
14	7000	400
15	10380	214

Assay Class: High Sensitivity DNA Assay
 Data Path: C:\...ents and Settings\Bioanalyzer\2013-07-24\2013-07-24_001.xad

Created: 7/24/2013 10:21:49 AM
 Modified: 7/24/2013 12:39:30 PM

Electropherogram Summary



Overall Results for Ladder

Noise: 0.2

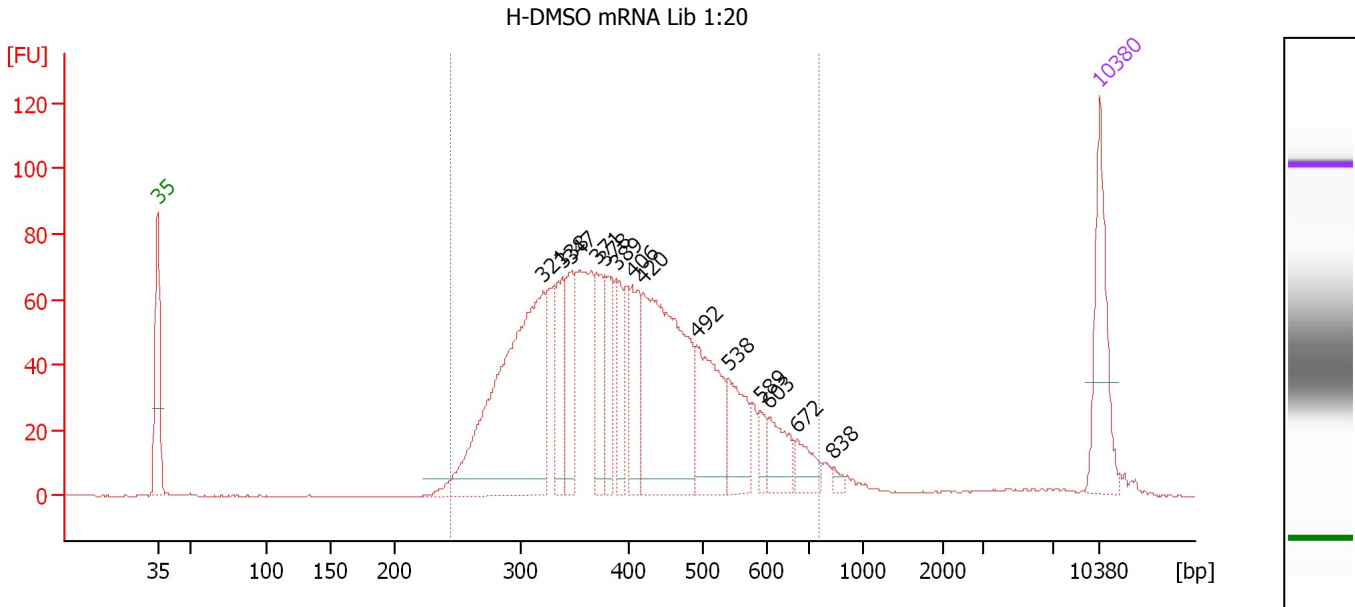
Peak table for Ladder

Peak	Size [bp]	Conc. [pg/μl]	Molarity [pmol/l]	Observations
1	35	125.00	5,411.3	Lower Marker
2	50	150.00	4,545.5	Ladder Peak
3	100	150.00	2,272.7	Ladder Peak
4	150	150.00	1,515.2	Ladder Peak
5	200	150.00	1,136.4	Ladder Peak
6	300	150.00	757.6	Ladder Peak
7	400	150.00	568.2	Ladder Peak
8	500	150.00	454.5	Ladder Peak
9	600	150.00	378.8	Ladder Peak
10	700	150.00	324.7	Ladder Peak
11	1,000	150.00	227.3	Ladder Peak
12	2,000	150.00	113.6	Ladder Peak
13	3,000	150.00	75.8	Ladder Peak
14	7,000	150.00	32.5	Ladder Peak
15	10,380	75.00	10.9	Upper Marker

Assay Class: High Sensitivity DNA Assay
 Data Path: C:\...ents and Settings\Bioanalyzer\2013-07-24\2013-07-24_001.xad

Created: 7/24/2013 10:21:49 AM
 Modified: 7/24/2013 12:39:30 PM

Electropherogram Summary Continued ...



Overall Results for sample 1 : H-DMSO mRNA Lib 1:20

Number of peaks found: 14 Corr. Area 1: 1,627.1
 Noise: 0.2

Peak table for sample 1 : H-DMSO mRNA Lib 1:20

Peak	Size [bp]	Conc. [pg/μl]	Molarity [pmol/l]	Observations
1	35	125.00	5,411.3	Lower Marker
2	321	408.61	1,930.0	
3	338	82.12	367.6	
4	347	69.62	304.0	
5	371	65.34	266.9	
6	378	59.44	238.0	
7	389	52.29	203.6	
8	406	71.73	267.9	
9	420	288.61	1,040.5	
10	492	113.07	348.4	
11	538	61.68	173.7	
12	589	18.03	46.4	
13	603	41.05	103.1	
14	672	28.20	63.6	
15	838	5.94	10.7	
16	10,380	75.00	10.9	Upper Marker

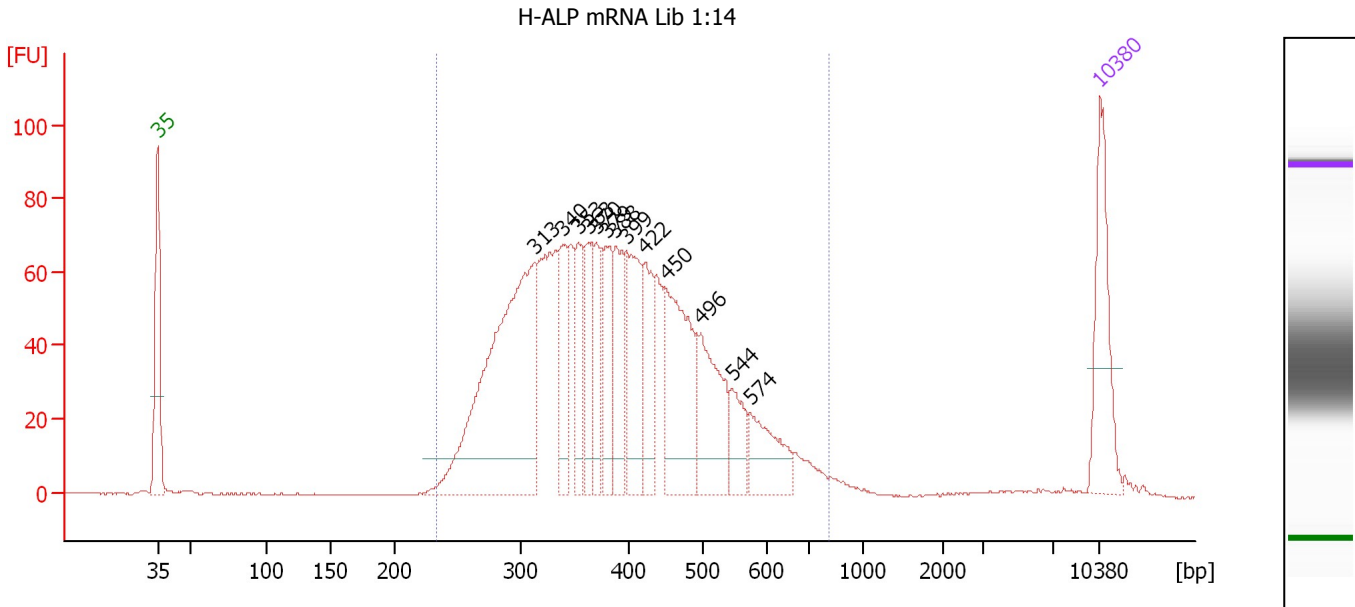
Region table for sample 1 : H-DMSO mRNA Lib 1:20

From [bp]	To [bp]	Average Size [bp]	Molarity [pmol/l]	Conc. [pg/μl]	Corr. Area	% of Total	Size distribution in CV [%]	Color
244	757	411	6,790.5	1,695.20	1,627.1	94	25.1	Blue

Assay Class: High Sensitivity DNA Assay
 Data Path: C:\...ents and Settings\Bioanalyzer\2013-07-24\2013-07-24_001.xad

Created: 7/24/2013 10:21:49 AM
 Modified: 7/24/2013 12:39:30 PM

Electropherogram Summary Continued ...



Setpoint Deviations for sample 2 : H-ALP mRNA Lib 1:14

Height Threshold [FU] : 10

Overall Results for sample 2 : H-ALP mRNA Lib 1:14

Number of peaks found: 13 Corr. Area 1: 1,641.7
 Noise: 0.2

Peak table for sample 2 : H-ALP mRNA Lib 1:14

Peak	Size [bp]	Conc. [pg/μl]	Molarity [pmol/l]	Observations
1	35	125.00	5,411.3	Lower Marker
2	313	420.91	2,037.3	
3	340	76.01	339.2	
4	353	64.60	277.0	
5	363	59.09	246.9	
6	370	57.76	236.5	
7	379	64.67	258.3	
8	388	71.18	278.0	
9	399	98.67	374.3	
10	422	70.21	252.0	
11	450	150.59	507.0	
12	496	105.26	321.6	
13	544	40.02	111.4	
14	574	60.32	159.3	
15	10,380	75.00	10.9	Upper Marker

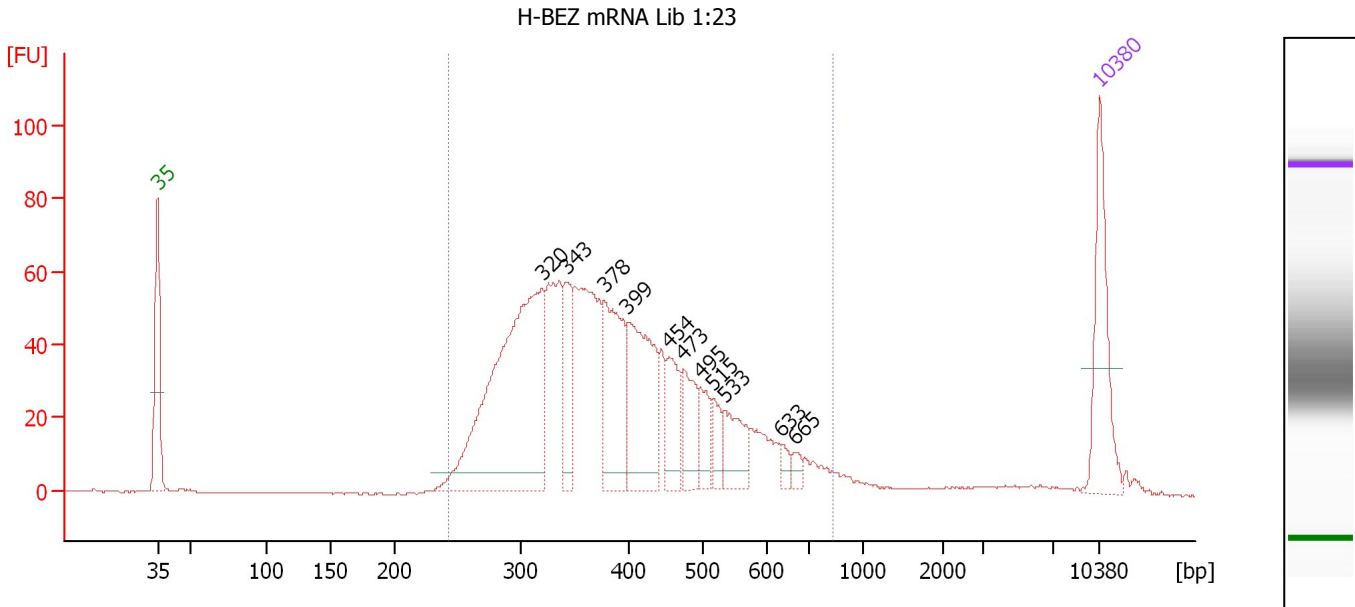
Region table for sample 2 : H-ALP mRNA Lib 1:14

From [bp]	To [bp]	Average Size [bp]	Molarity [pmol/l]	Conc. [pg/μl]	Corr. Area	% of Total	Size distribution in CV [%]	Color
233	808	399	7,083.4	1,721.06	1,641.7	96	25.0	Blue

Assay Class: High Sensitivity DNA Assay
 Data Path: C:\...ents and Settings\Bioanalyzer\2013-07-24\2013-07-24_001.xad

Created: 7/24/2013 10:21:49 AM
 Modified: 7/24/2013 12:39:30 PM

Electropherogram Summary Continued ...



Overall Results for sample 3 : H-BEZ mRNA Lib 1:23

Number of peaks found: 11 Corr. Area 1: 1,275.9
 Noise: 0.2

Peak table for sample 3 : H-BEZ mRNA Lib 1:23

Peak	Size [bp]	Conc. [pg/μl]	Molarity [pmol/l]	Observations
1	35	125.00	5,411.3	Lower Marker
2	320	396.84	1,878.1	
3	343	66.85	295.4	
4	378	129.62	519.8	
5	399	138.45	525.2	
6	454	52.12	174.0	
7	473	48.73	156.1	
8	495	28.97	88.6	
9	515	23.22	68.3	
10	533	47.41	134.8	
11	633	9.83	23.5	
12	665	9.30	21.2	
13	10,380	75.00	10.9	Upper Marker

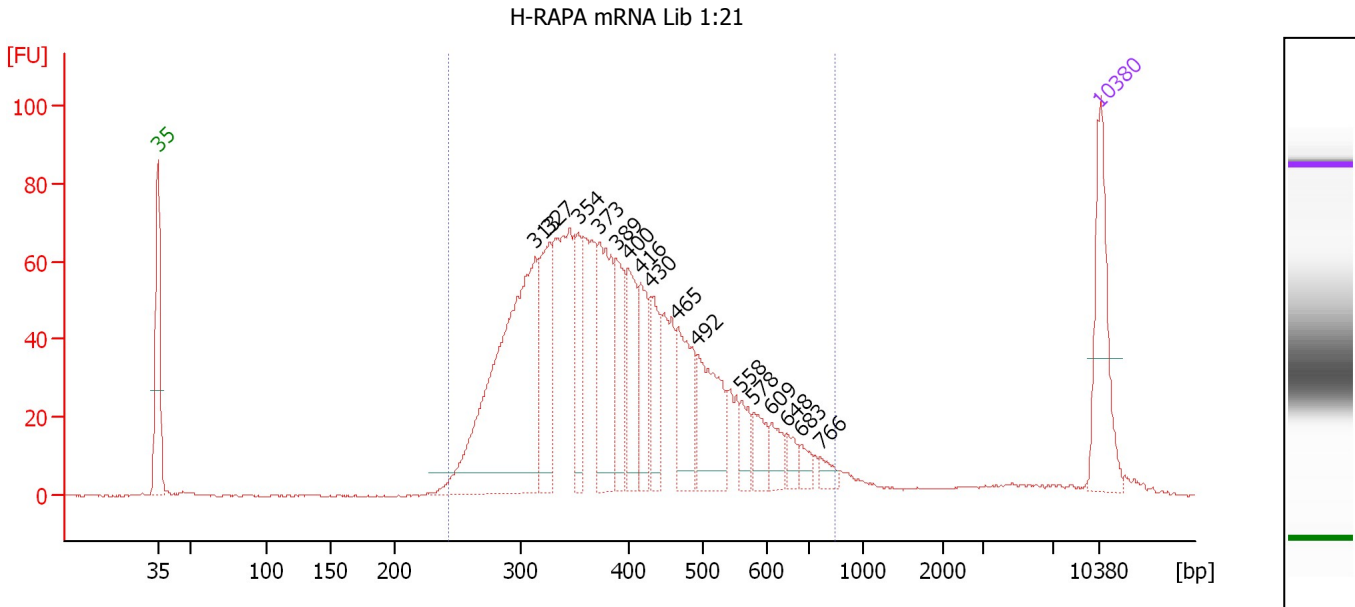
Region table for sample 3 : H-BEZ mRNA Lib 1:23

From [bp]	To [bp]	Average Size [bp]	Molarity [pmol/l]	Conc. [pg/μl]	Corr. Area	% of Total	Size distribution in CV [%]	Color
243	836	400	5,830.4	1,413.28	1,275.9	94	26.7	Blue

Assay Class: High Sensitivity DNA Assay
 Data Path: C:\...ents and Settings\Bioanalyzer\2013-07-24\2013-07-24_001.xad

Created: 7/24/2013 10:21:49 AM
 Modified: 7/24/2013 12:39:30 PM

Electropherogram Summary Continued ...



Overall Results for sample 4 : H-RAPA mRNA Lib 1:21

Number of peaks found: 16 Corr. Area 1: 1,485.0
 Noise: 0.2

Peak table for sample 4 : H-RAPA mRNA Lib 1:21

Peak	Size [bp]	Conc. [pg/μl]	Molarity [pmol/l]	Observations
1	35	125.00	5,411.3	Lower Marker
2	313	375.91	1,817.4	
3	327	104.29	483.2	
4	354	63.98	274.2	
5	373	114.50	465.0	
6	389	60.52	235.7	
7	400	70.80	268.4	
8	416	61.91	225.3	
9	430	53.75	189.5	
10	465	76.30	248.5	
11	492	87.26	268.7	
12	558	23.14	62.8	
13	578	24.36	63.8	
14	609	20.88	51.9	
15	648	13.45	31.4	
16	683	12.29	27.3	
17	766	10.48	20.7	
18	10,380	75.00	10.9	Upper Marker

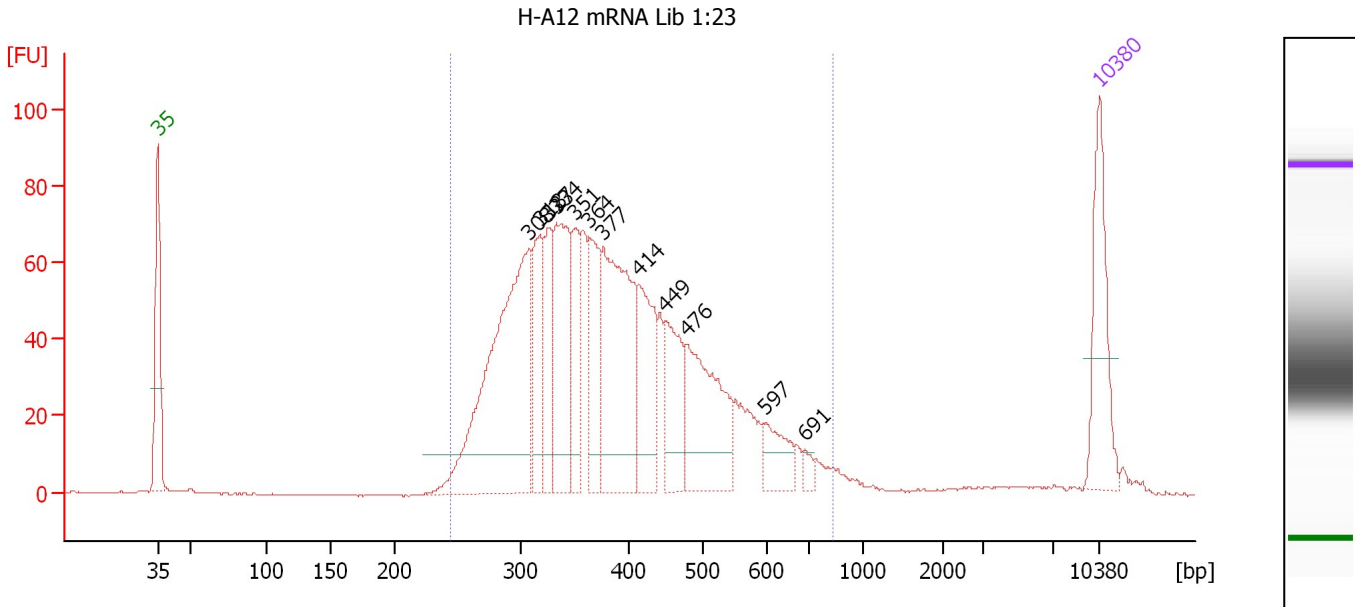
Region table for sample 4 : H-RAPA mRNA Lib 1:21

From [bp]	To [bp]	Average Size [bp]	Molarity [pmol/l]	Conc. [pg/μl]	Corr. Area	% of Total	Size distribution in CV [%]	Color
243	850	406	6,810.8	1,674.98	1,485.0	93	26.7	Blue

Assay Class: High Sensitivity DNA Assay
 Data Path: C:\...ents and Settings\Bioanalyzer\2013-07-24\2013-07-24_001.xad

Created: 7/24/2013 10:21:49 AM
 Modified: 7/24/2013 12:39:30 PM

Electropherogram Summary Continued ...



Setpoint Deviations for sample 5 : H-A12 mRNA Lib 1:23

Height Threshold [FU] : 10

Overall Results for sample 5 : H-A12 mRNA Lib 1:23

Number of peaks found: 12 Corr. Area 1: 1,514.4
 Noise: 0.2

Peak table for sample 5 : H-A12 mRNA Lib 1:23

Peak	Size [bp]	Conc. [pg/μl]	Molarity [pmol/l]	Observations
1	35	125.00	5,411.3	Lower Marker
2	308	361.54	1,778.4	
3	318	92.09	438.6	
4	327	72.56	336.7	
5	334	139.84	634.9	
6	351	68.76	296.8	
7	364	86.29	359.6	
8	377	229.52	923.2	
9	414	98.99	361.9	
10	449	77.22	260.4	
11	476	140.10	445.5	
12	597	36.65	93.1	
13	691	9.12	20.0	
14	10,380	75.00	10.9	Upper Marker

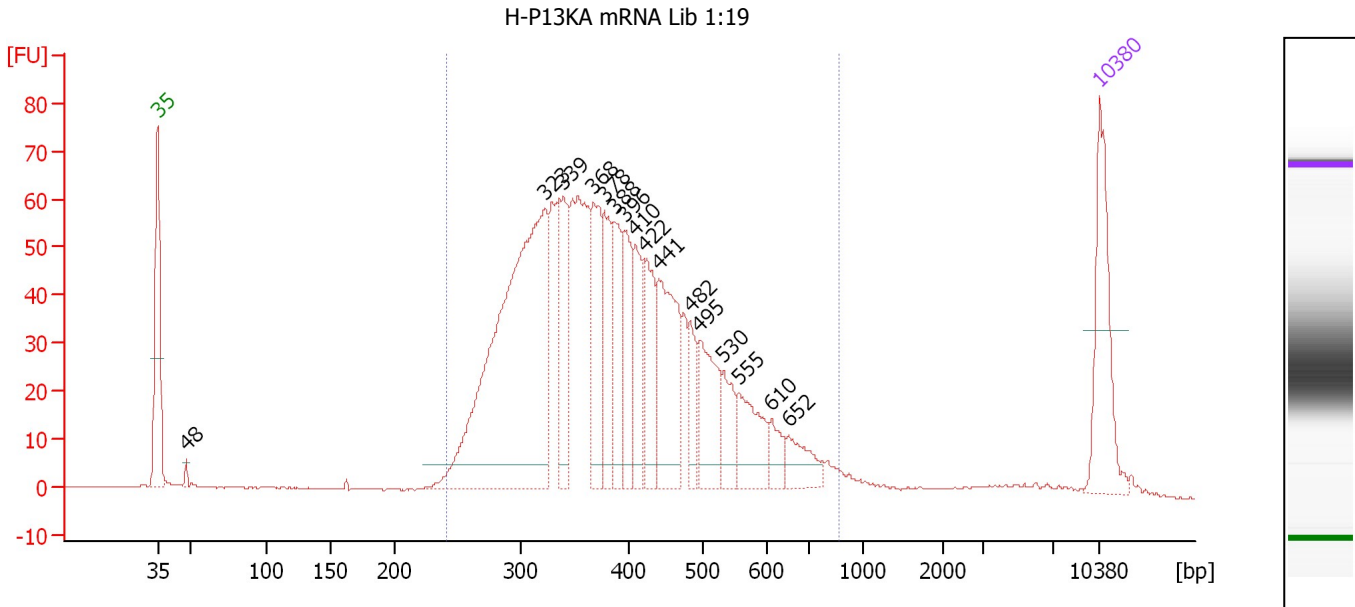
Region table for sample 5 : H-A12 mRNA Lib 1:23

From [bp]	To [bp]	Average Size [bp]	Molarity [pmol/l]	Conc. [pg/μl]	Corr. Area	% of Total	Size distribution in CV [%]	Color
244	838	399	6,688.6	1,622.06	1,514.4	95	26.3	Blue

Assay Class: High Sensitivity DNA Assay
 Data Path: C:\...ents and Settings\Bioanalyzer\2013-07-24\2013-07-24_001.xad

Created: 7/24/2013 10:21:49 AM
 Modified: 7/24/2013 12:39:30 PM

Electropherogram Summary Continued ...



Overall Results for sample 6 : H-P13KA mRNA Lib 1:19

Number of peaks found: 16 Corr. Area 1: 1,331.8
 Noise: 0.2

Peak table for sample 6 : H-P13KA mRNA Lib 1:19

Peak	Size [bp]	Conc. [pg/μl]	Molarity [pmol/l]	Observations
1	35	125.00	5,411.3	Lower Marker
2	48	6.14	192.2	
3	323	488.56	2,291.4	
4	339	70.69	315.6	
5	368	89.68	369.5	
6	378	65.66	263.2	
7	388	71.18	277.8	
8	396	58.51	223.9	
9	410	57.81	213.7	
10	422	67.33	241.8	
11	441	114.22	392.7	
12	482	31.38	98.6	
13	495	72.84	223.0	
14	530	35.64	101.8	
15	555	55.24	150.9	
16	610	19.43	48.2	
17	652	29.87	69.4	
18	10,380	75.00	10.9	Upper Marker

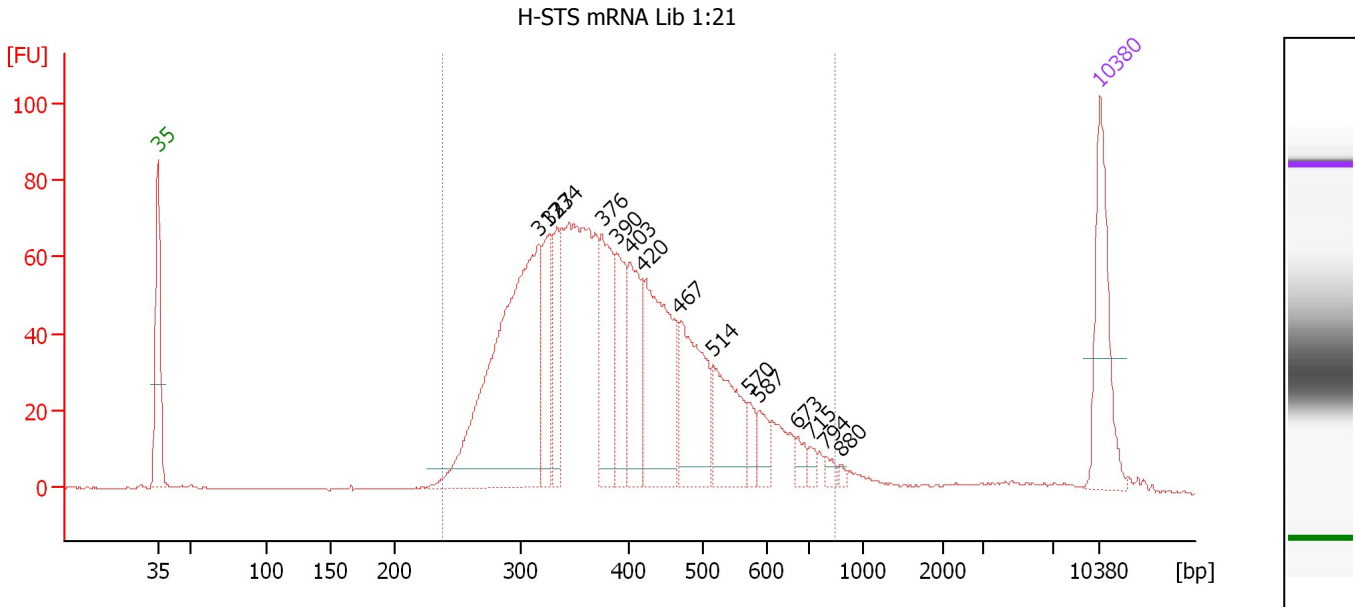
Region table for sample 6 : H-P13KA mRNA Lib 1:19

From [bp]	To [bp]	Average Size [bp]	Molarity [pmol/l]	Conc. [pg/μl]	Corr. Area	% of Total	Size distribution in CV [%]	Color
240	863	401	7,154.4	1,742.40	1,331.8	95	26.2	Blue

Assay Class: High Sensitivity DNA Assay
 Data Path: C:\...ents and Settings\Bioanalyzer\2013-07-24\2013-07-24_001.xad

Created: 7/24/2013 10:21:49 AM
 Modified: 7/24/2013 12:39:30 PM

Electropherogram Summary Continued ...



Overall Results for sample 7 : H-STS mRNA Lib 1:21

Number of peaks found: 15 Corr. Area 1: 1,529.8
 Noise: 0.2

Peak table for sample 7 : H-STS mRNA Lib 1:21

Peak	Size [bp]	Conc. [pg/μl]	Molarity [pmol/l]	Observations
1	35	125.00	5,411.3	Lower Marker
2	317	407.50	1,947.3	
3	327	71.04	329.4	
4	334	67.23	305.4	
5	376	110.50	445.8	
6	390	72.70	282.7	
7	403	82.10	309.0	
8	420	166.61	601.2	
9	467	119.40	387.6	
10	514	84.96	250.4	
11	570	16.11	42.8	
12	587	20.00	51.7	
13	673	10.94	24.6	
14	715	7.23	15.3	
15	794	6.63	12.7	
16	880	3.02	5.2	
17	10,380	75.00	10.9	Upper Marker

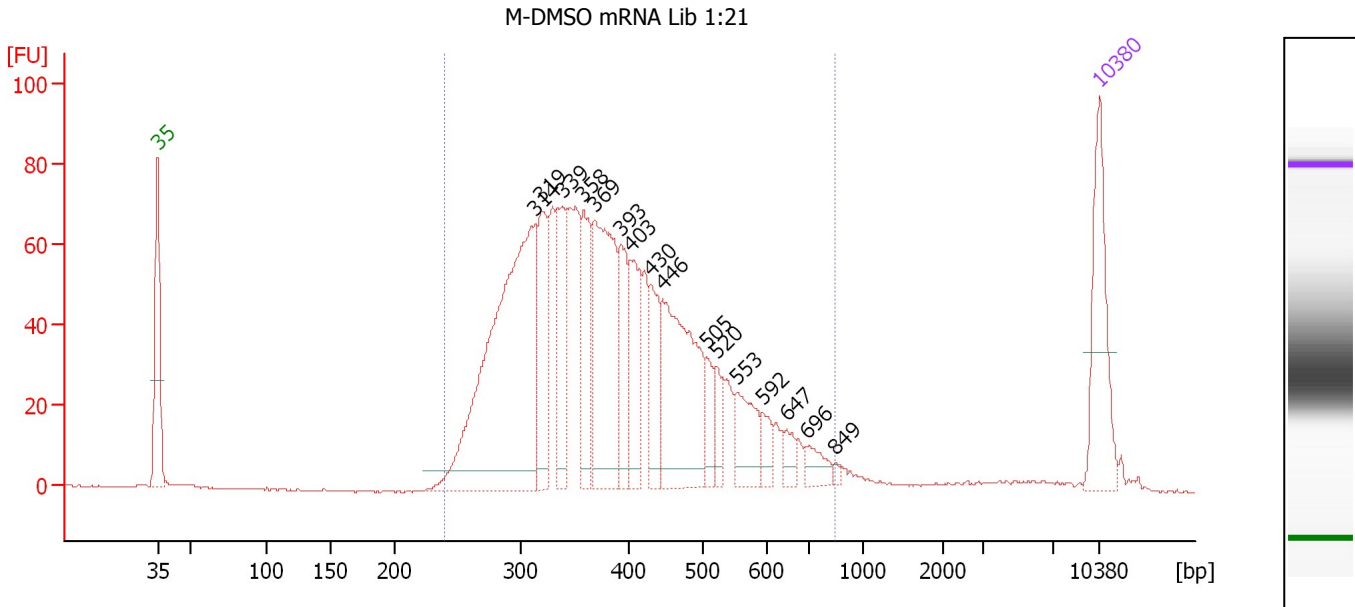
Region table for sample 7 : H-STS mRNA Lib 1:21

From [bp]	To [bp]	Average Size [bp]	Molarity [pmol/l]	Conc. [pg/μl]	Corr. Area	% of Total	Size distribution in CV [%]	Color
238	841	404	6,796.7	1,663.53	1,529.8	94	26.7	Blue

Assay Class: High Sensitivity DNA Assay
 Data Path: C:\...ents and Settings\Bioanalyzer\2013-07-24\2013-07-24_001.xad

Created: 7/24/2013 10:21:49 AM
 Modified: 7/24/2013 12:39:30 PM

Electropherogram Summary Continued ...



Overall Results for sample 8 : M-DMSO mRNA Lib 1:21

Number of peaks found: 16 Corr. Area 1: 1,541.2
 Noise: 0.2

Peak table for sample 8 : M-DMSO mRNA Lib 1:21

Peak	Size [bp]	Conc. [pg/μl]	Molarity [pmol/l]	Observations
1	35	125.00	5,411.3	Lower Marker
2	314	429.31	2,073.8	
3	319	100.97	479.3	
4	339	88.11	394.1	
5	358	81.26	343.6	
6	369	187.75	771.5	
7	393	69.74	268.7	
8	403	68.54	257.4	
9	430	61.81	218.0	
10	446	175.93	597.5	
11	505	25.65	76.9	
12	520	24.83	72.4	
13	553	48.28	132.4	
14	592	17.15	43.9	
15	647	14.39	33.7	
16	696	18.54	40.4	
17	849	3.43	6.1	
18	10,380	75.00	10.9	Upper Marker

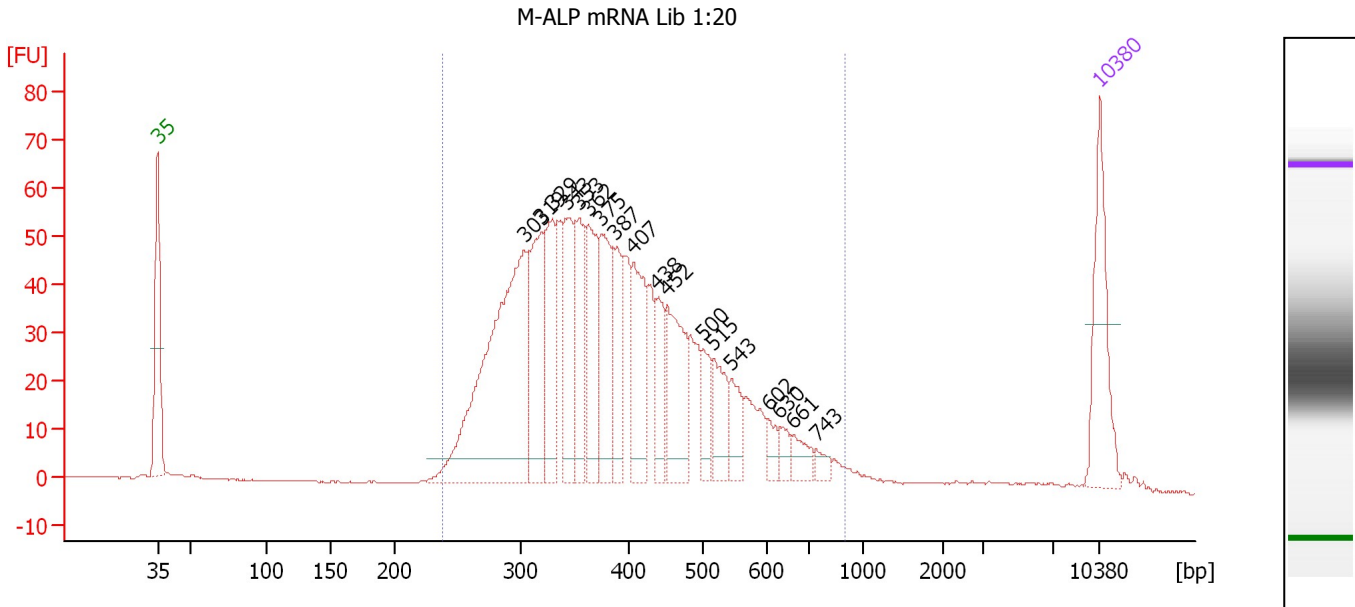
Region table for sample 8 : M-DMSO mRNA Lib 1:21

From [bp]	To [bp]	Average Size [bp]	Molarity [pmol/l]	Conc. [pg/μl]	Corr. Area	% of Total	Size distribution in CV [%]	Color
239	842	399	7,172.9	1,736.23	1,541.2	95	26.6	Blue

Assay Class: High Sensitivity DNA Assay
 Data Path: C:\...ents and Settings\Bioanalyzer\2013-07-24\2013-07-24_001.xad

Created: 7/24/2013 10:21:49 AM
 Modified: 7/24/2013 12:39:30 PM

Electropherogram Summary Continued ...



Overall Results for sample 9 : M-ALP mRNA Lib 1:20

Number of peaks found: 18 Corr. Area 1: 1,227.9
 Noise: 0.2

Peak table for sample 9 : M-ALP mRNA Lib 1:20

Peak	Size [bp]	Conc. [pg/μl]	Molarity [pmol/l]	Observations
1	35	125.00	5,411.3	Lower Marker
2	303	384.23	1,919.3	
3	319	120.13	571.1	
4	329	96.37	443.6	
5	343	89.30	394.8	
6	353	75.77	325.0	
7	362	92.07	384.9	
8	375	100.65	406.3	
9	387	62.23	243.6	
10	407	92.96	346.1	
11	438	45.86	158.5	
12	452	97.93	328.5	
13	500	33.36	101.1	
14	515	47.73	140.3	
15	543	32.26	90.0	
16	602	14.41	36.3	
17	630	13.92	33.5	
18	661	19.16	44.0	
19	743	9.91	20.2	
20	10,380	75.00	10.9	Upper Marker

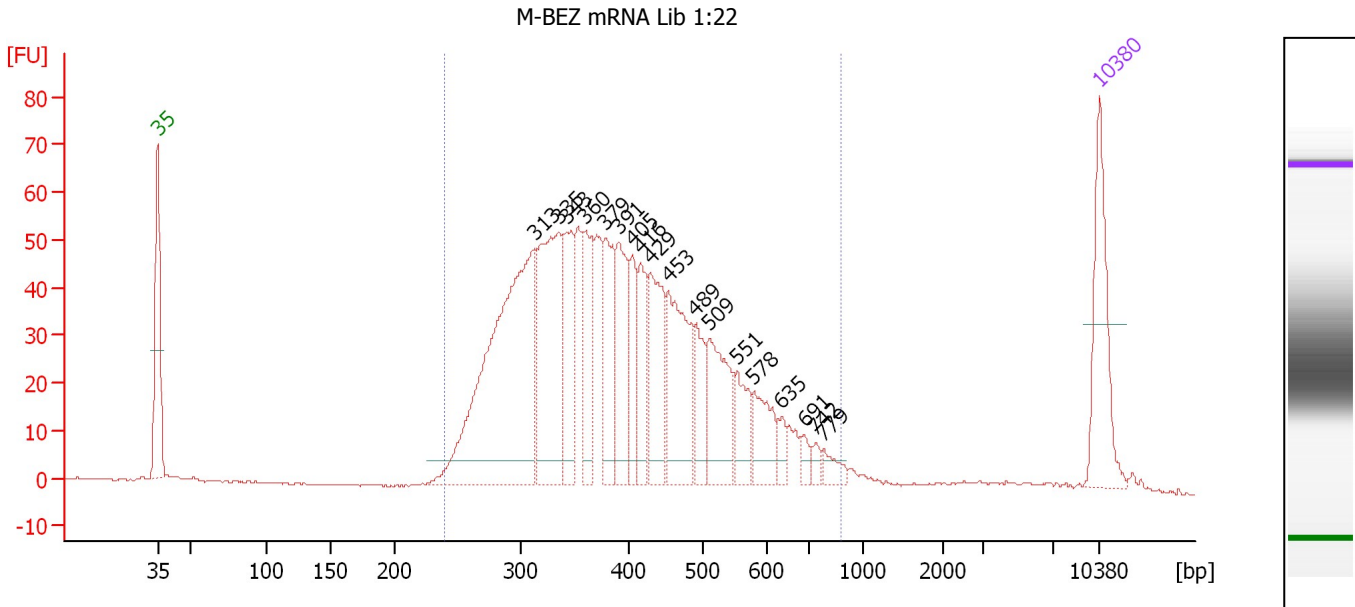
Region table for sample 9 : M-ALP mRNA Lib 1:20

From [bp]	To [bp]	Average Size [bp]	Molarity [pmol/l]	Conc. [pg/μl]	Corr. Area	% of Total	Size distribution in CV [%]	Color
237	901	403	7,458.8	1,811.05	1,227.9	95	27.7	Blue

Assay Class: High Sensitivity DNA Assay
 Data Path: C:\...ents and Settings\Bioanalyzer\2013-07-24\2013-07-24_001.xad

Created: 7/24/2013 10:21:49 AM
 Modified: 7/24/2013 12:39:30 PM

Electropherogram Summary Continued ...



Overall Results for sample 10 : M-BEZ mRNA Lib 1:22

Number of peaks found: 18 Corr. Area 1: 1,253.7
 Noise: 0.2

Peak table for sample 10 : M-BEZ mRNA Lib 1:22

Peak	Size [bp]	Conc. [pg/μl]	Molarity [pmol/l]	Observations
1	35	125.00	5,411.3	Lower Marker
2	313	405.70	1,964.4	
3	335	194.01	876.7	
4	343	87.89	388.5	
5	360	79.03	333.1	
6	379	77.53	310.1	
7	391	86.11	334.0	
8	405	52.11	194.8	
9	416	53.73	195.8	
10	429	92.70	327.3	
11	453	118.03	394.8	
12	489	45.47	140.8	
13	509	87.70	260.9	
14	551	40.44	111.2	
15	578	44.19	115.8	
16	635	12.98	31.0	
17	691	11.00	24.1	
18	742	7.07	14.4	
19	779	12.80	24.9	
20	10,380	75.00	10.9	Upper Marker

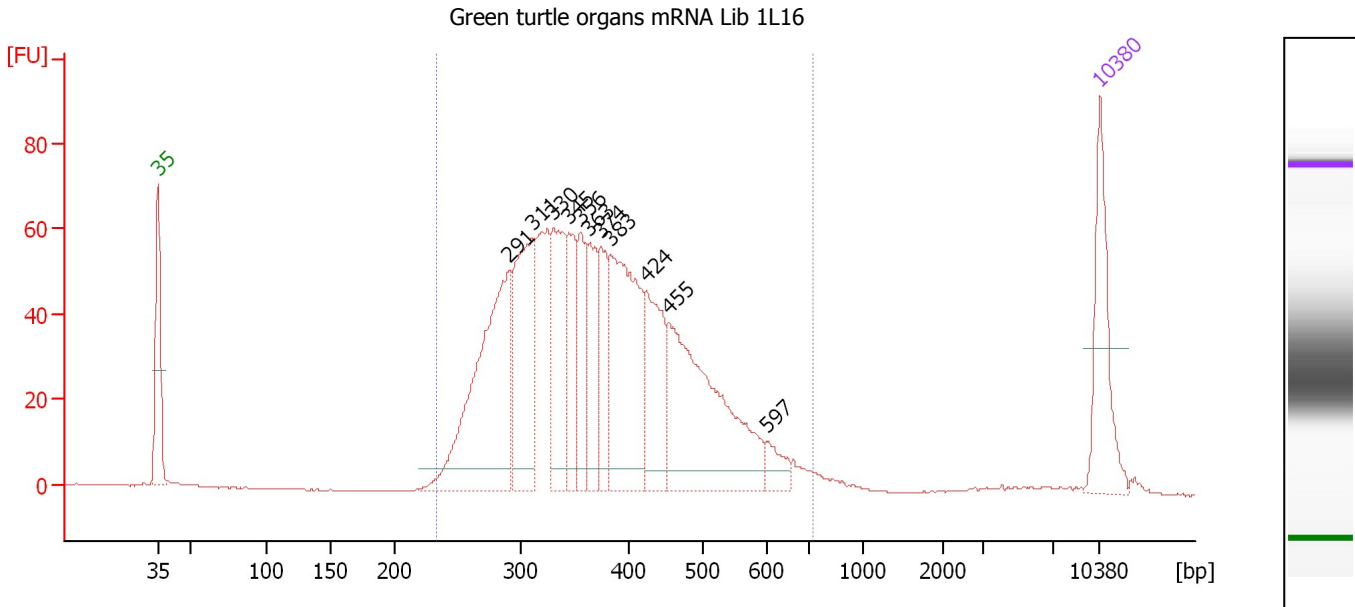
Region table for sample 10 : M-BEZ mRNA Lib 1:22

From [bp]	To [bp]	Average Size [bp]	Molarity [pmol/l]	Conc. [pg/μl]	Corr. Area	% of Total	Size distribution in CV [%]	Color
239	879	408	7,134.4	1,752.94	1,253.7	95	27.4	Blue

Assay Class: High Sensitivity DNA Assay
 Data Path: C:\...ents and Settings\Bioanalyzer\2013-07-24\2013-07-24_001.xad

Created: 7/24/2013 10:21:49 AM
 Modified: 7/24/2013 12:39:30 PM

Electropherogram Summary Continued ...



Overall Results for sample 11 : Green turtle organs mRNA Lib 1L16

Number of peaks found: 11 Corr. Area 1: 1,310.3
 Noise: 0.2

Peak table for sample 11 : Green turtle organs mRNA Lib 1L16

Peak	Size [bp]	Conc. [pg/µl]	Molarity [pmol/l]	Observations
1	35	125.00	5,411.3	Lower Marker
2	291	290.21	1,512.1	
3	311	176.08	858.8	
4	330	117.64	539.9	
5	345	76.44	336.1	
6	356	63.97	272.3	
7	363	79.59	332.4	
8	374	62.72	254.0	
9	383	209.23	827.8	
10	424	102.85	367.5	
11	455	255.46	851.6	
12	597	21.71	55.1	
13	10,380	75.00	10.9	Upper Marker

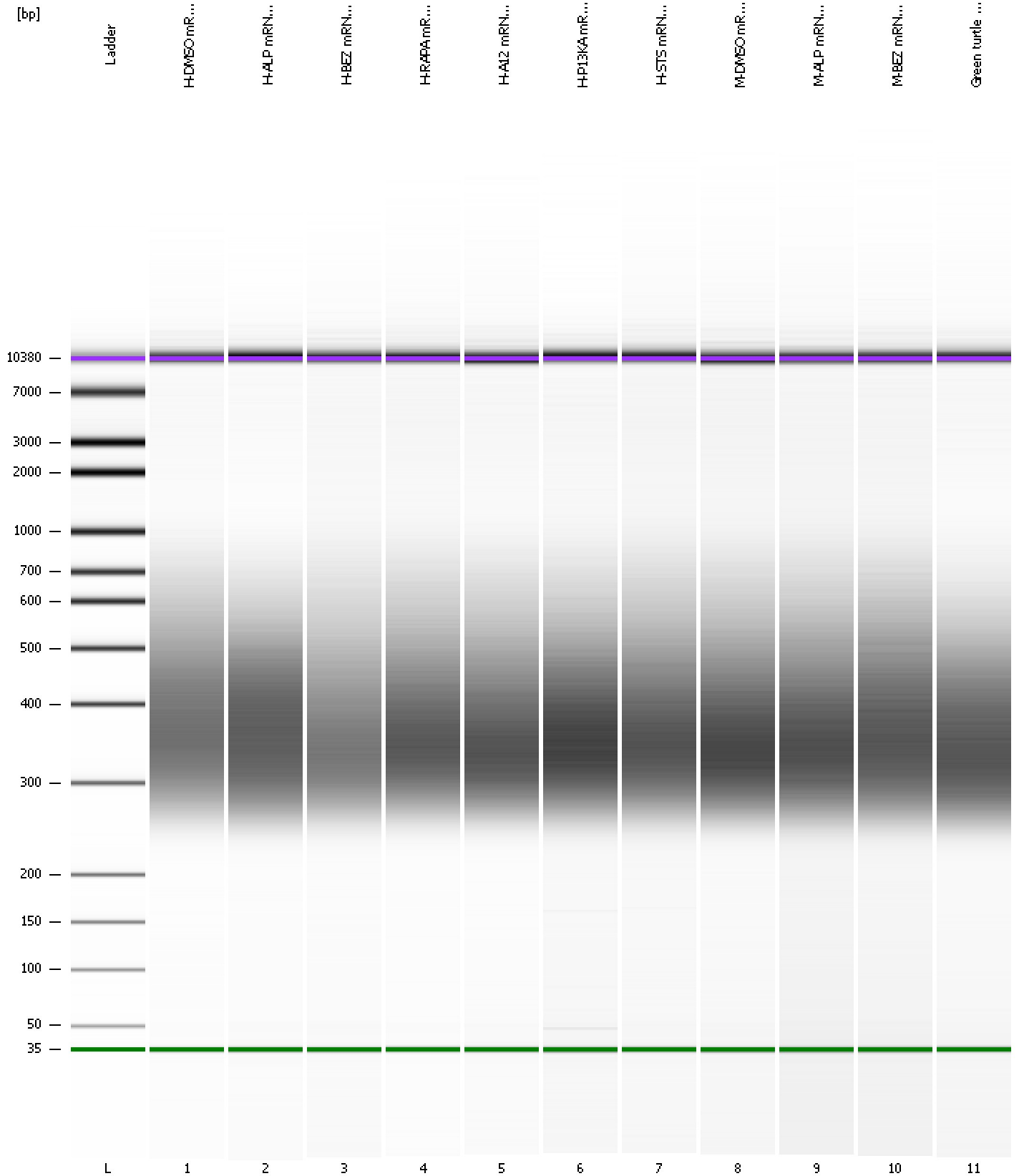
Region table for sample 11 : Green turtle organs mRNA Lib 1L16

From [bp]	To [bp]	Average Size [bp]	Molarity [pmol/l]	Conc. [pg/µl]	Corr. Area	% of Total	Size distribution in CV [%]	Color
233	724	383	6,884.4	1,616.91	1,310.3	97	23.9	Blue

Assay Class: High Sensitivity DNA Assay
Data Path: C:\...ents and Settings\Bioanalyzer\2013-07-24\2013-07-24_001.xad

Created: 7/24/2013 10:21:49 AM
Modified: 7/24/2013 12:39:30 PM

Gel Image



Assay Class: High Sensitivity DNA Assay
 Data Path: C:\...ents and Settings\Bioanalyzer\2013-07-24\2013-07-24_001.xad

Created: 7/24/2013 10:21:49 AM
 Modified: 7/24/2013 12:39:30 PM

Run Logbook

Description	Number	Source	Category	Sub Category	Time	Time Zone	User	Host
Run ended on port 1 (Number of wells acquired: 12)		Instrument	Run		7/24/2013 11:03:07 AM	(GMT --07:00) Pacific Standard Time	UC Davis	D8XSMGH1
Run started on port 1 (File: C:\Documents and Settings\Bioanalyzer\2013-07-24\2013-07-24_001.xad)		Instrument	Run		7/24/2013 10:21:54 AM	(GMT --07:00) Pacific Standard Time	UC Davis	D8XSMGH1
Product Number : G2938B		Instrument	Run		7/24/2013 10:21:54 AM	(GMT --07:00) Pacific Standard Time	UC Davis	D8XSMGH1
Name :		Instrument	Run		7/24/2013 10:21:54 AM	(GMT --07:00) Pacific Standard Time	UC Davis	D8XSMGH1
Vendor : Agilent Technologies		Instrument	Run		7/24/2013 10:21:54 AM	(GMT --07:00) Pacific Standard Time	UC Davis	D8XSMGH1
Serial# : DE13701086		Instrument	Run		7/24/2013 10:21:54 AM	(GMT --07:00) Pacific Standard Time	UC Davis	D8XSMGH1
Firmware : C.01.069		Instrument	Run		7/24/2013 10:21:54 AM	(GMT --07:00) Pacific Standard Time	UC Davis	D8XSMGH1
Cartridge : Electrode		Instrument	Run		7/24/2013 10:21:54 AM	(GMT --07:00) Pacific Standard Time	UC Davis	D8XSMGH1