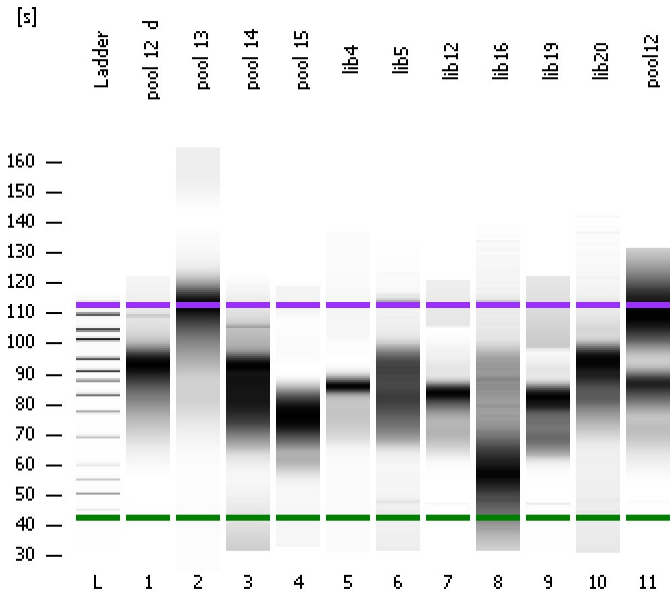


Assay Class: High Sensitivity DNA Assay
Data Path: C:\... Settings\Bioanalyzer\2013-07-25\2013-07-25_002_Juliana.xad

Created: 7/25/2013 11:06:08 AM
Modified: 7/25/2013 2:17:24 PM

Electrophoresis File Run Summary



Instrument Information:

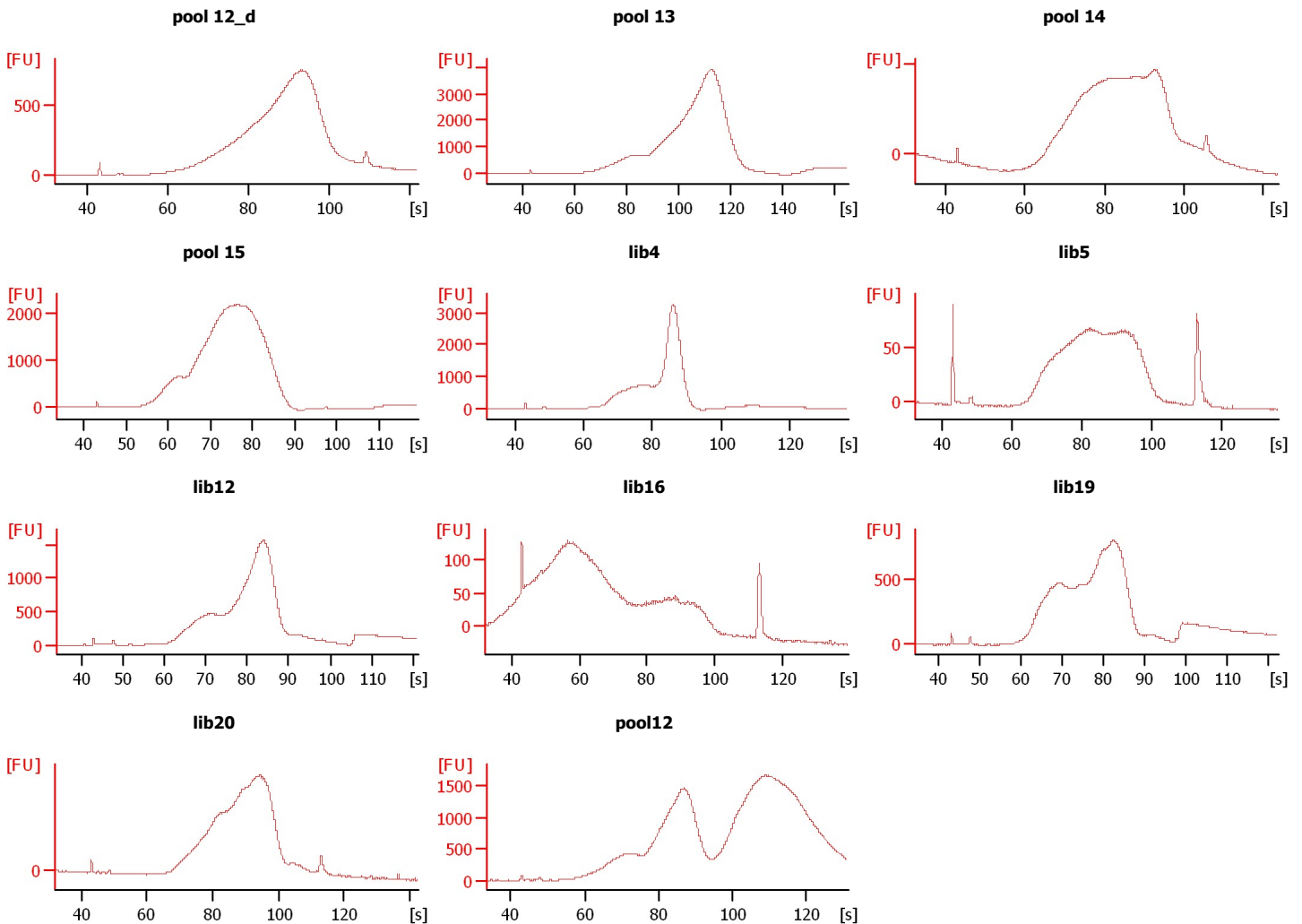
Instrument Name: DE13701086 Firmware: C.01.069
Serial#: DE13701086 Type: G2938B

Assay Information:

Assay Origin Path: C:\Program Files\Agilent\2100 bioanalyzer\2100 expert\assays\dsDNA\High Sensitivity DNA.xsy
Assay Class: High Sensitivity DNA Assay
Version: 1.03
Assay Comments: Copyright © 2003-2010 Agilent Technologies

Chip Information:

Chip Lot #: Reagent Kit Lot #: Chip Comments:



Assay Class: High Sensitivity DNA Assay
Data Path: C:\... Settings\Bioanalyzer\2013-07-25\2013-07-25_002_Juliana.xad

Created: 7/25/2013 11:06:08 AM
Modified: 7/25/2013 2:17:24 PM

Electrophoresis File Run Summary (Chip Summary)

Sample Name	Sample Comment	Rest. Digest	Status	Observation	Result Label	Result Color
pool 12_d		<input type="checkbox"/>	✓			
pool 13		<input type="checkbox"/>	✓			
pool 14		<input type="checkbox"/>	✓			
pool 15		<input type="checkbox"/>	✓			
lib4		<input type="checkbox"/>	✓			
lib5		<input type="checkbox"/>	✓			
lib12		<input type="checkbox"/>	✓			
lib16		<input type="checkbox"/>	✓			
lib19		<input type="checkbox"/>	✓			
lib20		<input type="checkbox"/>	✓			
pool12		<input type="checkbox"/>	✓			
Ladder		<input type="checkbox"/>	✓			

Chip Lot #

Reagent Kit Lot #

Chip Comments :

Assay Class: High Sensitivity DNA Assay
Data Path: C:\... Settings\Bioanalyzer\2013-07-25\2013-07-25_002_Juliana.xad

Created: 7/25/2013 11:06:08 AM
Modified: 7/25/2013 2:17:24 PM

Electrophoresis Assay Details

General Analysis Settings

Number of Available Sample and Ladder Wells (Max.) : 12
Minimum Visible Range [s] : 32
Maximum Visible Range [s] : 138
Start Analysis Time Range [s] : 33
End Analysis Time Range [s] : 137.5
Ladder Concentration [pg/μl] : 1950
Uses Standard Area for Ladder Fragments
Lower Marker Concentration [pg/μl] : 125
Upper Marker Concentration [pg/μl] : 75
Used Upper Marker for Quantitation
Standard Curve Fit is Point to Point
Show Data Aligned to Lower and Upper Marker

Integrator Settings

Integration Start Time [s] : 33.05
Integration End Time [s] : 137
Slope Threshold : 0.8
Height Threshold [FU] : 5
Area Threshold : 0.1
Width Threshold [s] : 0.6
Baseline Plateau [s] : 0.5

Filter Settings

Filter Width [s] : 0.5
Polynomial Order : 4

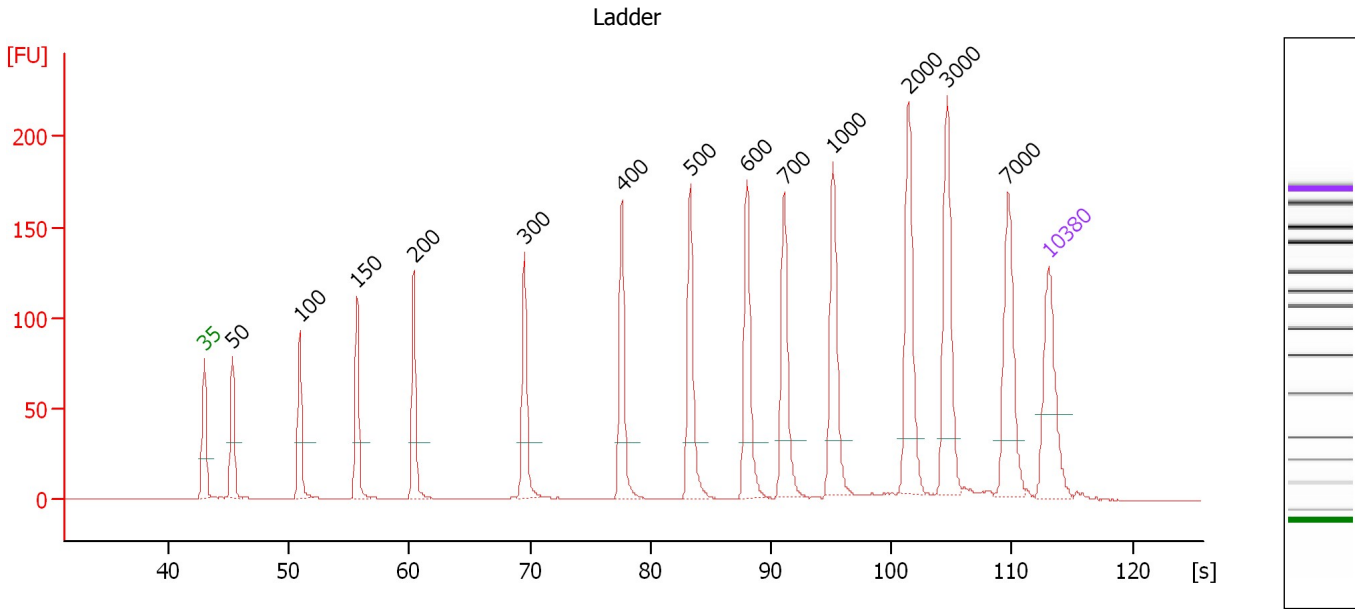
Ladder

Ladder Peak	Size	Area
1	35	160
2	50	210
3	100	208
4	150	221
5	200	242
6	300	270
7	400	305
8	500	306
9	600	336
10	700	321
11	1000	366
12	2000	413
13	3000	411
14	7000	400
15	10380	214

Assay Class: High Sensitivity DNA Assay
 Data Path: C:\... Settings\Bioanalyzer\2013-07-25\2013-07-25_002_Juliana.xad

Created: 7/25/2013 11:06:08 AM
 Modified: 7/25/2013 2:17:24 PM

Electropherogram Summary



Overall Results for Ladder

Noise: 0.1

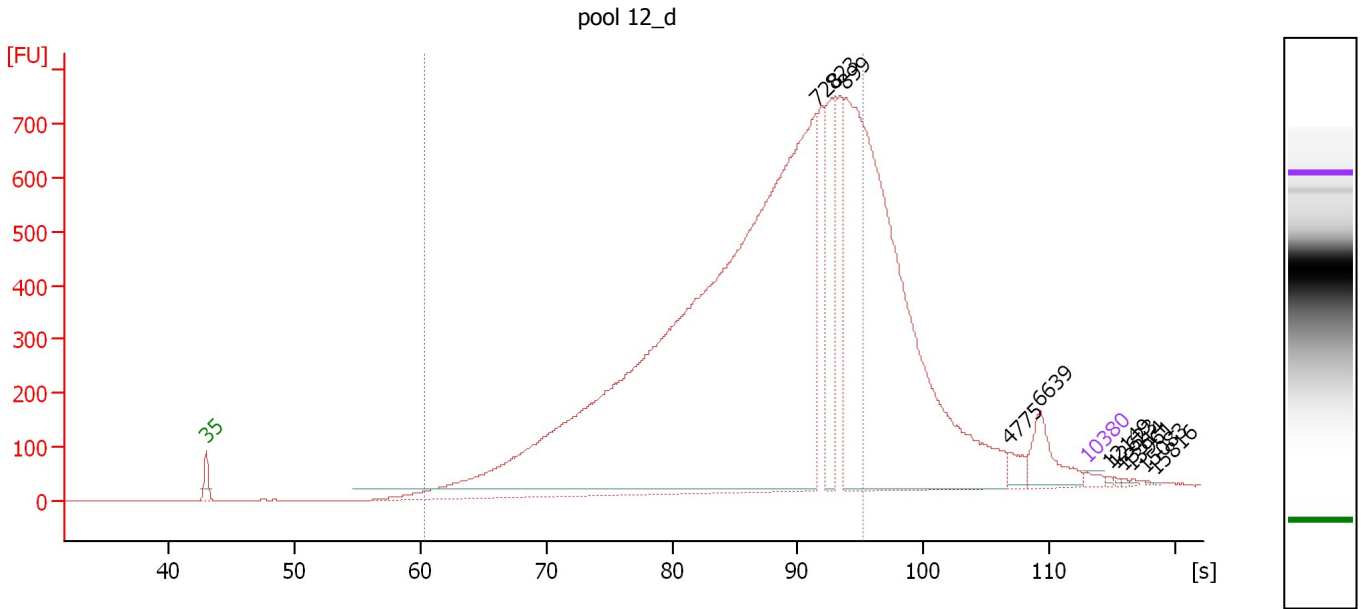
Peak table for Ladder

Peak	Size [bp]	Conc. [pg/μl]	Molarity [pmol/l]	Observations
1	35	125.00	5,411.3	Lower Marker
2	50	150.00	4,545.5	Ladder Peak
3	100	150.00	2,272.7	Ladder Peak
4	150	150.00	1,515.2	Ladder Peak
5	200	150.00	1,136.4	Ladder Peak
6	300	150.00	757.6	Ladder Peak
7	400	150.00	568.2	Ladder Peak
8	500	150.00	454.5	Ladder Peak
9	600	150.00	378.8	Ladder Peak
10	700	150.00	324.7	Ladder Peak
11	1,000	150.00	227.3	Ladder Peak
12	2,000	150.00	113.6	Ladder Peak
13	3,000	150.00	75.8	Ladder Peak
14	7,000	150.00	32.5	Ladder Peak
15	10,380	75.00	10.9	Upper Marker

Assay Class: High Sensitivity DNA Assay
 Data Path: C:\... Settings\Bioanalyzer\2013-07-25\2013-07-25_002_Juliana.xad

Created: 7/25/2013 11:06:08 AM
 Modified: 7/25/2013 2:17:24 PM

Electropherogram Summary Continued ...



Overall Results for sample 1 : pool 12_d

Number of peaks found: 11 Corr. Area 1: 13,191.1
 Noise: 0.2

Peak table for sample 1 : pool 12_d

Peak	Size [bp]	Conc. [pg/μl]	Molarity [pmol/l]	Observations
1	35	125.00	5,411.3	Lower Marker
2	728	25,801.34	53,687.2	
3	823	1,842.47	3,392.7	
4	899	11,662.88	19,665.3	
5	4,775	192.19	61.0	
6	6,639	627.39	143.2	
7	10,380	75.00	10.9	Upper Marker
8	12,149	0.00	0.0	
9	12,623	0.00	0.0	
10	13,314	0.00	0.0	
11	13,961	0.00	0.0	
12	15,083	0.00	0.0	
13	15,816	0.00	0.0	

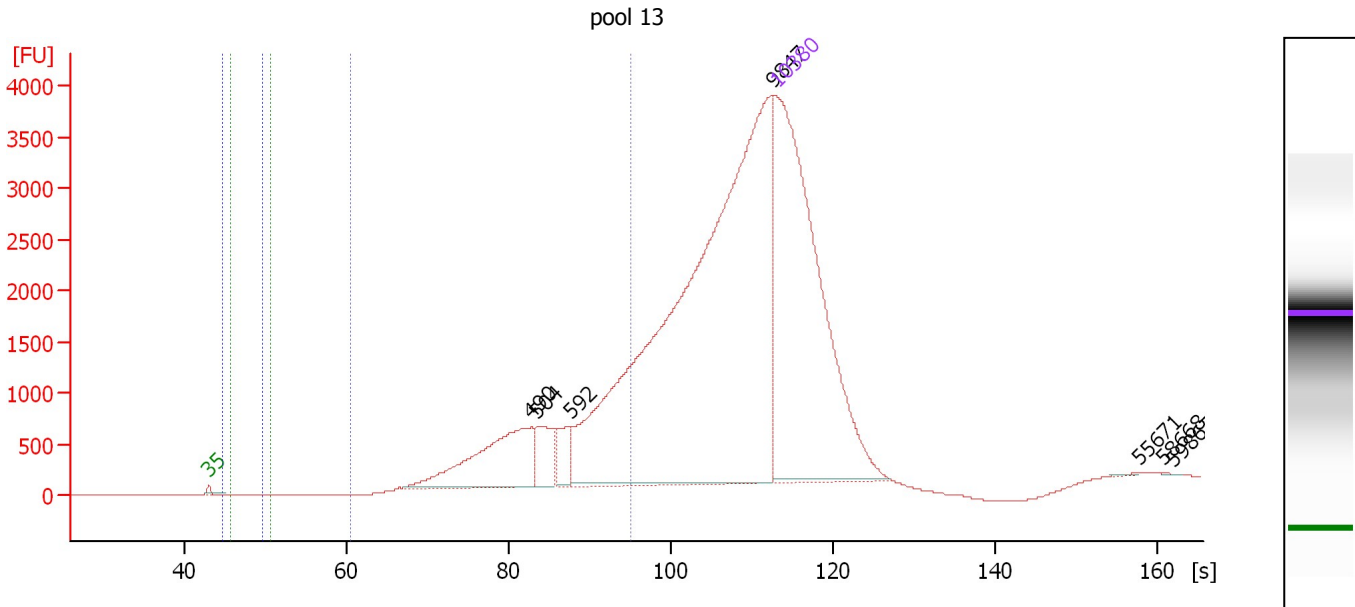
Region table for sample 1 : pool 12_d

From [s]	To [s]	Average Size [bp]	Molarity [pmol/l]	Conc. [pg/μl]	Corr. Area % of Total	Size distribution in CV [%]	Color
60.38	95.13	597	111,900.2	37,351.36	13,191.1 78	31.8	Blue

Assay Class: High Sensitivity DNA Assay
 Data Path: C:\... Settings\Bioanalyzer\2013-07-25\2013-07-25_002_Juliana.xad

Created: 7/25/2013 11:06:08 AM
 Modified: 7/25/2013 2:17:24 PM

Electropherogram Summary Continued ...



Setpoint Deviations for sample 2 : pool 13

Height Threshold [FU] : 2

Overall Results for sample 2 : pool 13

Number of peaks found: 7
 Noise: 1.2
 Corr. Area 1: 13,642.0
 Corr. Area 2: 0.0
 Corr. Area 3: 0.0

Peak table for sample 2 : pool 13

Peak	Size [bp]	Conc. [pg/μl]	Molarity [pmol/l]	Observations
1	35	125.00	5,411.3	Lower Marker
2	490	27.71	85.6	
3	504	8.34	25.1	
4	592	5.07	13.0	
5	9,847	150.09	23.1	
6	10,380	75.00	10.9	Upper Marker
7	55,671	0.00	0.0	
8	58,668	0.00	0.0	
9	59,867	0.00	0.0	

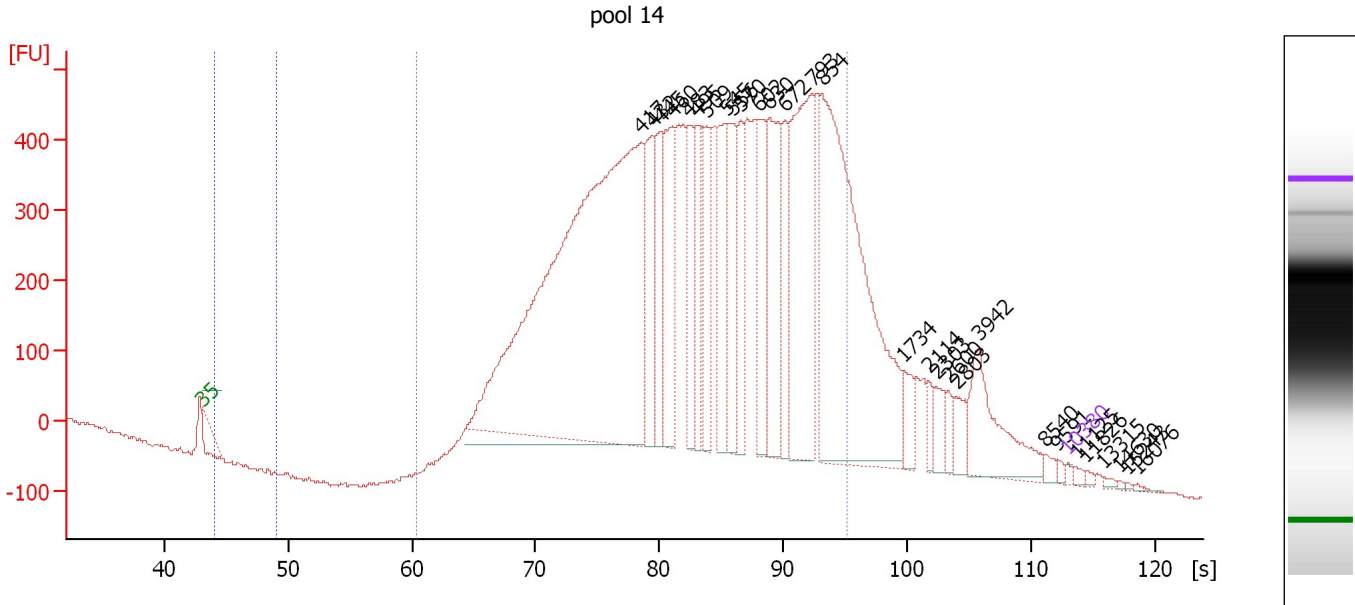
Region table for sample 2 : pool 13

From [s]	To [s]	Average Size [bp]	Molarity [pmol/l]	Conc. [pg/μl]	Corr. Area	% of Total	Size distribution in CV [%]	Color
44.71	49.71	0	0.0	0.00	0.0	0	0.0	Blue
45.58	50.58	0	0.0	0.00	0.0	0	0.0	Green
60.38	95.13	604	214.0	74.40	13,641.9	29	31.7	Blue

Assay Class: High Sensitivity DNA Assay
 Data Path: C:\... Settings\Bioanalyzer\2013-07-25\2013-07-25_002_Juliana.xad

Created: 7/25/2013 11:06:08 AM
 Modified: 7/25/2013 2:17:24 PM

Electropherogram Summary Continued ...



Setpoint Deviations for sample 3 : pool 14

Height Threshold [FU] : 1

Overall Results for sample 3 : pool 14

Number of peaks found: 29 Corr. Area 1: 15,383.4
 Noise: 1.5 Corr. Area 2: 0.0

Peak table for sample 3 : pool 14

Peak	Size [bp]	Conc. [pg/μl]	Molarity [pmol/l]	Observations
1	35	125.00	5,411.3	Lower Marker
2	417	27,831.60	101,242.8	
3	432	2,802.99	9,820.4	
4	445	2,535.56	8,640.6	
5	460	3,143.95	10,360.0	
6	483	2,239.70	7,020.8	
7	495	1,926.70	5,900.5	
8	509	2,474.36	7,360.7	
9	545	2,650.36	7,374.8	
10	556	2,343.54	6,390.7	
11	570	1,766.30	4,699.1	
12	602	2,108.95	5,312.3	
13	630	3,699.50	8,901.7	
14	672	1,990.63	4,488.6	
15	793	6,077.67	11,608.8	
16	854	12,515.89	22,202.0	
17	1,734	583.85	510.1	
18	2,114	315.20	225.9	
19	2,303	528.42	347.6	
20	2,600	282.65	164.7	
21	2,803	529.41	286.2	
22	3,942	2,241.98	861.6	

Assay Class: High Sensitivity DNA Assay
 Data Path: C:\... Settings\Bioanalyzer\2013-07-25\2013-07-25_002_Juliana.xad



Created: 7/25/2013 11:06:08 AM
 Modified: 7/25/2013 2:17:24 PM

Electropherogram Summary Continued ...

... Peak table for sample 3 : pool 14

Peak	Size [bp]	Conc. [pg/μl]	Molarity [pmol/l]	Observations
23	8,540	147.32	26.1	
24	9,591	82.04	13.0	
25	10,380	75.00	10.9	Upper Marker
26	11,125	0.00	0.0	
27	11,826	0.00	0.0	
28	13,315	0.00	0.0	
29	14,630	0.00	0.0	
30	15,243	0.00	0.0	
31	16,076	0.00	0.0	

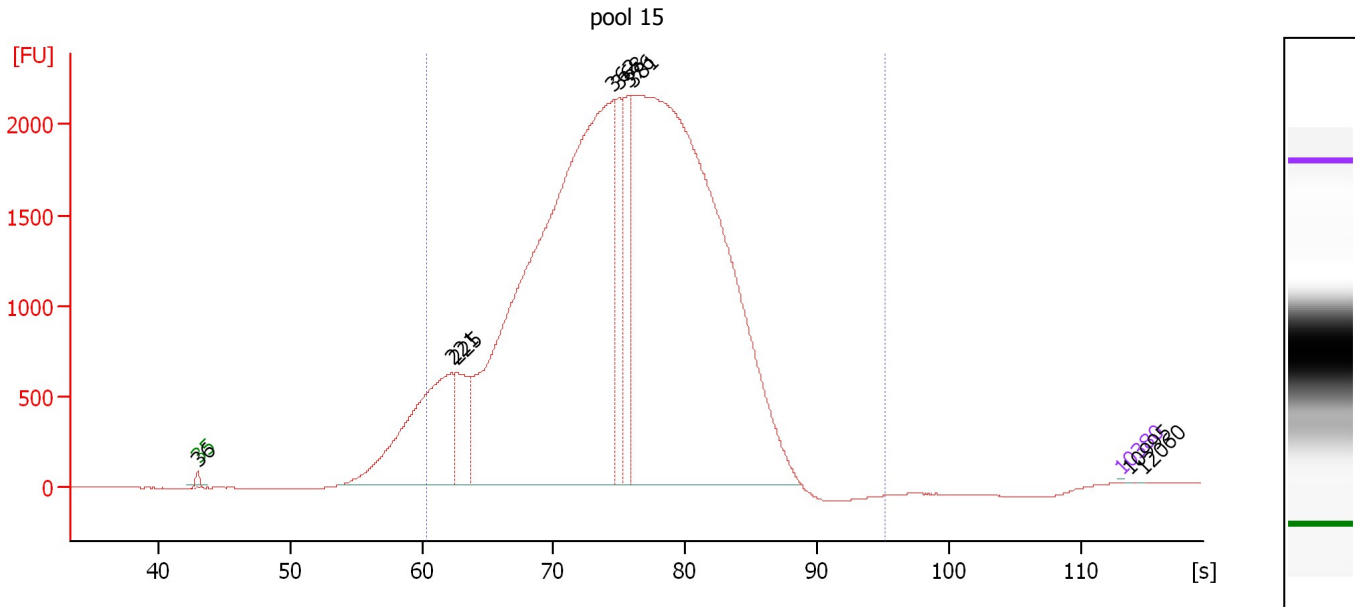
Region table for sample 3 : pool 14

From [s]	To [s]	Average Size [bp]	Molarity [pmol/l]	Conc. [pg/μl]	Corr. Area % of Total	Size distribution in CV [%]	Color
44.10	49.10	0	0.0	0.00	0.0	0	
60.38	95.13	533	296,724.1	89,081.50	15,383.4	85	

Assay Class: High Sensitivity DNA Assay
 Data Path: C:\... Settings\Bioanalyzer\2013-07-25\2013-07-25_002_Juliana.xad

Created: 7/25/2013 11:06:08 AM
 Modified: 7/25/2013 2:17:24 PM

Electropherogram Summary Continued ...



Overall Results for sample 4 : pool 15

Number of peaks found: 9 Corr. Area 1: 55,234.9
 Noise: 1.3

Peak table for sample 4 : pool 15

Peak	Size [bp]	Conc. [pg/μl]	Molarity [pmol/l]	Observations
1	35	125.00	5,411.3	Lower Marker
2	36	4,473.91	189,417.7	
3	221	226,320.66	1,553,360.0	
4	225	62,702.05	421,922.7	
5	362	925,723.69	3,874,597.3	
6	368	73,266.88	302,046.9	
7	376	87,771.55	354,100.2	
8	381	1,006,302.25	4,006,184.0	
9	10,380	75.00	10.9	Upper Marker
10	10,995	0.00	0.0	
11	12,060	0.00	0.0	

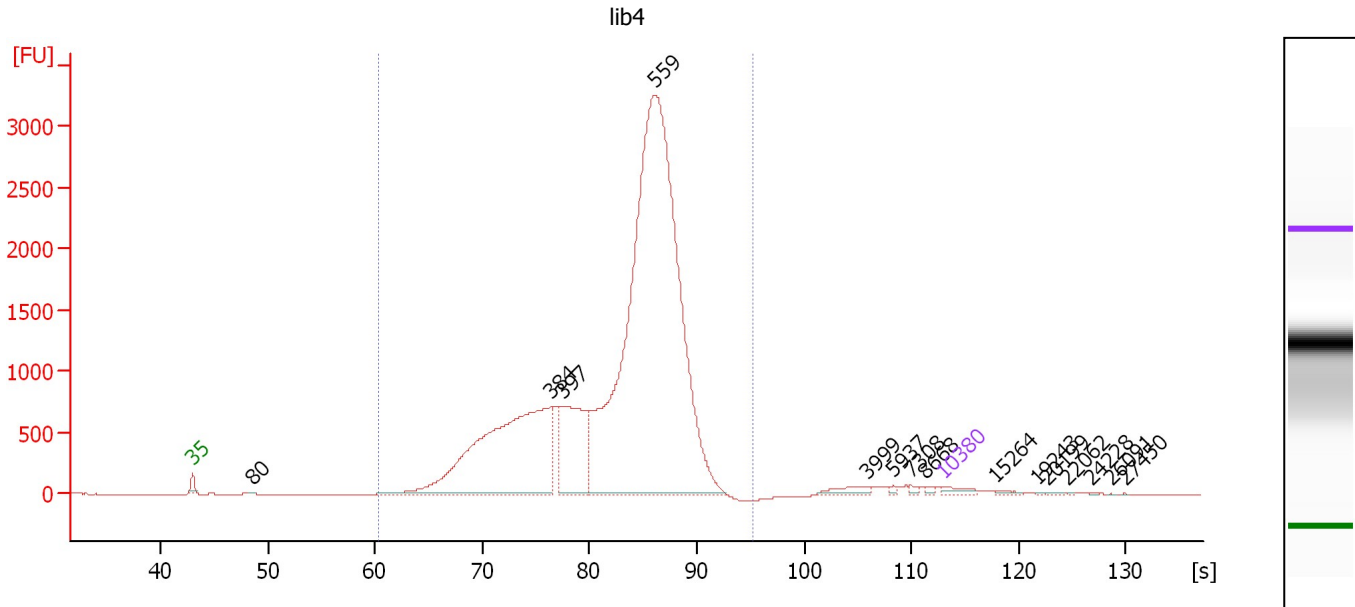
Region table for sample 4 : pool 15

From [s]	To [s]	Average Size [bp]	Molarity [pmol/l]	Conc. [pg/μl]	Corr. Area	% of Total	Size distribution in CV [%]	Color
60.38	95.13	374	10,191,631.0	2,319,353.00	55,234.9	95	22.8	Blue

Assay Class: High Sensitivity DNA Assay
 Data Path: C:\... Settings\Bioanalyzer\2013-07-25\2013-07-25_002_Juliana.xad

Created: 7/25/2013 11:06:08 AM
 Modified: 7/25/2013 2:17:24 PM

Electropherogram Summary Continued ...



Overall Results for sample 5 : lib4

Number of peaks found: 15 Corr. Area 1: 31,157.2
 Noise: 0.9

Peak table for sample 5 : lib4

Peak	Size [bp]	Conc. [pg/μl]	Molarity [pmol/l]	Observations
1	35	125.00	5,411.3	Lower Marker
2	80	14.53	276.2	
3	384	5,232.89	20,630.0	
4	397	1,750.08	6,674.3	
5	559	14,327.21	38,862.4	
6	3,999	118.86	45.0	
7	5,937	22.36	5.7	
8	7,308	31.13	6.5	
9	8,668	28.78	5.0	
10	10,380	75.00	10.9	Upper Marker
11	15,264	0.00	0.0	
12	19,243	0.00	0.0	
13	20,199	0.00	0.0	
14	22,062	0.00	0.0	
15	24,228	0.00	0.0	
16	26,091	0.00	0.0	
17	27,450	0.00	0.0	

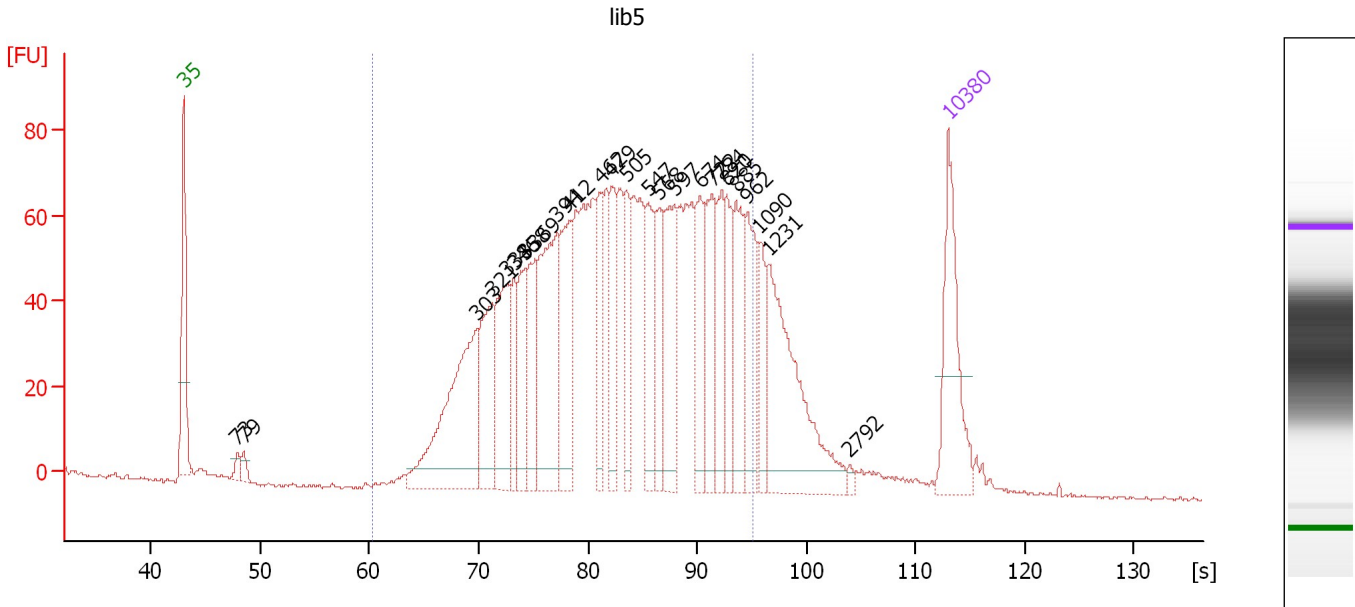
Region table for sample 5 : lib4

From [s]	To [s]	Average Size [bp]	Molarity [pmol/l]	Conc. [pg/μl]	Corr. Area % of Total	Size distribution in CV [%]	Color
60.38	95.13	496	75,292.3	22,592.22	31,157.2 97	21.3	Blue

Assay Class: High Sensitivity DNA Assay
 Data Path: C:\... Settings\Bioanalyzer\2013-07-25\2013-07-25_002_Juliana.xad

Created: 7/25/2013 11:06:08 AM
 Modified: 7/25/2013 2:17:24 PM

Electropherogram Summary Continued ...



Overall Results for sample 6 : lib5

Number of peaks found: 25 Corr. Area 1: 2,021.9
 Noise: 0.4

Peak table for sample 6 : lib5

Peak	Size [bp]	Conc. [pg/μl]	Molarity [pmol/l]	Observations
1	35	125.00	5,411.3	Lower Marker
2	73	10.32	213.2	
3	79	10.93	210.6	
4	303	195.44	977.6	
5	321	89.60	423.5	
6	338	96.76	433.4	
7	346	44.74	195.8	
8	358	66.57	281.4	
9	369	60.55	248.4	
10	394	148.77	571.6	
11	412	92.24	339.4	
12	462	58.01	190.3	
13	479	58.31	184.4	
14	505	52.18	156.6	
15	547	57.72	159.9	
16	568	48.40	129.1	
17	597	86.74	220.0	
18	674	61.91	139.1	
19	722	68.52	143.9	
20	784	56.53	109.3	
21	820	48.03	88.8	
22	885	63.20	108.2	
23	962	64.89	102.2	
24	1,090	35.47	49.3	
25	1,231	143.82	177.1	
26	2,792	2.89	1.6	

Assay Class: High Sensitivity DNA Assay
Data Path: C:\... Settings\Bioanalyzer\2013-07-25\2013-07-25_002_Juliana.xad

Created: 7/25/2013 11:06:08 AM
Modified: 7/25/2013 2:17:24 PM

Electropherogram Summary Continued ...**... Peak table for sample 6 : lib5**

Peak	Size [bp]	Conc. [pg/ μ l]	Molarity [pmol/l]	Observations
27	10,380	75.00	10.9	Upper Marker

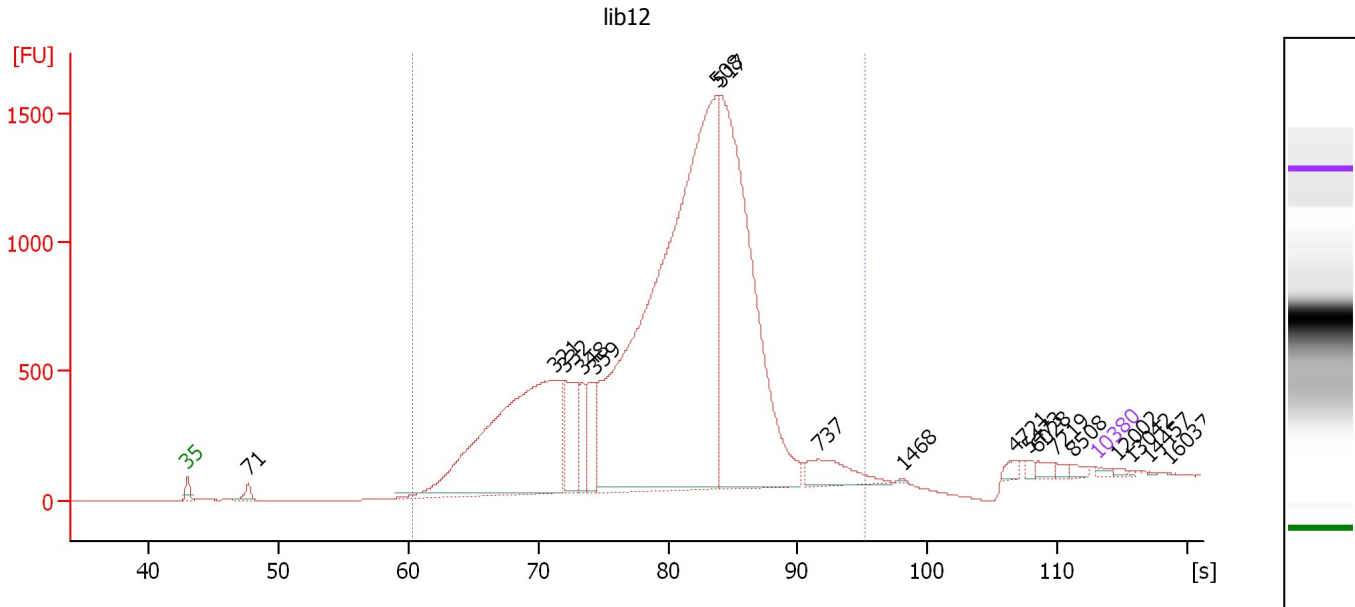
Region table for sample 6 : lib5

From [s]	To [s]	Average Size [bp]	Molarity [pmol/l]	Conc. [pg/ μ l]	Corr. Area % of Total	Size distribution in CV [%]	Color	
60.38	95.13	526	6,639.1	1,967.89	2,021.9	87	34.3	

Assay Class: High Sensitivity DNA Assay
 Data Path: C:\... Settings\Bioanalyzer\2013-07-25\2013-07-25_002_Juliana.xad

Created: 7/25/2013 11:06:08 AM
 Modified: 7/25/2013 2:17:24 PM

Electropherogram Summary Continued ...



Overall Results for sample 7 : lib12

Number of peaks found: 18 Corr. Area 1: 23,647.9
 Noise: 0.2

Peak table for sample 7 : lib12

Peak	Size [bp]	Conc. [pg/μl]	Molarity [pmol/l]	Observations
1	35	125.00	5,411.3	Lower Marker
2	71	283.51	6,025.6	
3	321	10,391.38	49,116.8	
4	332	1,786.52	8,158.8	
5	348	758.65	3,302.2	
6	359	1,140.73	4,817.1	
7	508	22,546.92	67,197.4	
8	517	12,110.26	35,479.1	
9	737	940.93	1,935.5	
10	1,468	18.62	19.2	
11	4,721	136.03	43.7	
12	5,473	79.73	22.1	
13	6,028	144.08	36.2	
14	7,219	100.34	21.1	
15	8,508	100.05	17.8	
16	10,380	75.00	10.9	Upper Marker
17	12,002	0.00	0.0	
18	13,042	0.00	0.0	
19	14,457	0.00	0.0	
20	16,037	0.00	0.0	

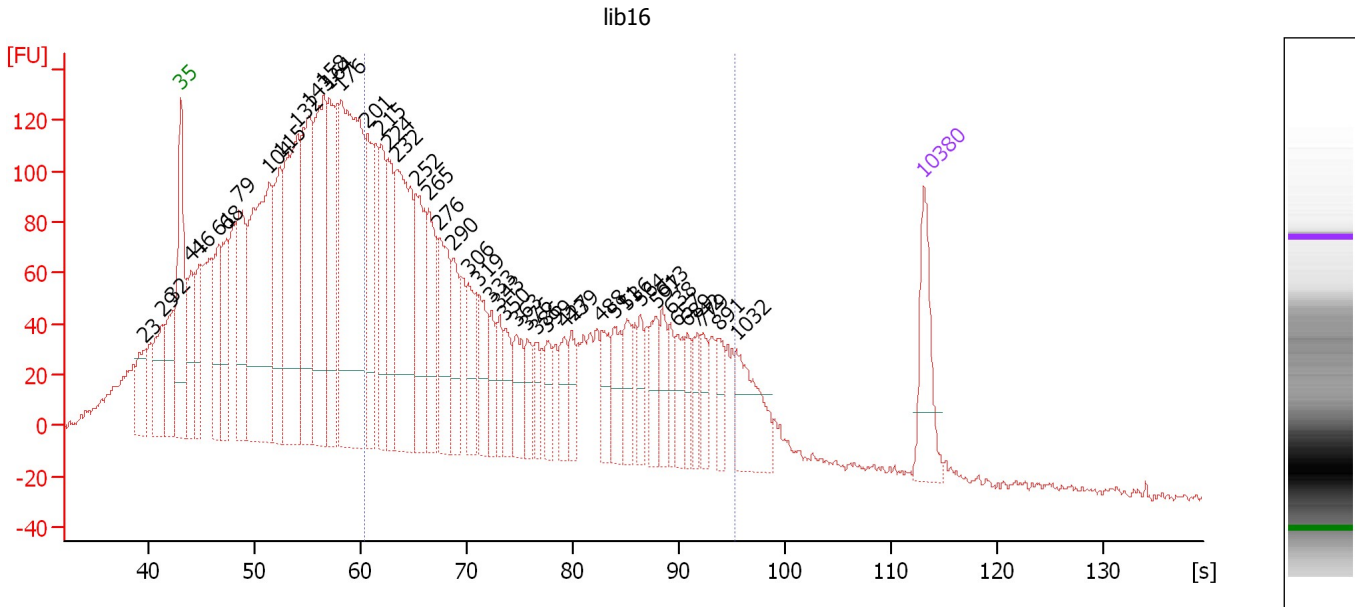
Region table for sample 7 : lib12

From [s]	To [s]	Average Size [bp]	Molarity [pmol/l]	Conc. [pg/μl]	Corr. Area % of Total	Size distribution in CV [%]	Color	
60.38	95.13	452	185,277.0	50,098.49	23,647.9	98	24.1	Blue

Assay Class: High Sensitivity DNA Assay
 Data Path: C:\... Settings\Bioanalyzer\2013-07-25\2013-07-25_002_Juliana.xad

Created: 7/25/2013 11:06:08 AM
 Modified: 7/25/2013 2:17:24 PM

Electropherogram Summary Continued ...



Setpoint Deviations for sample 8 : lib16

Height Threshold [FU] : 30

Overall Results for sample 8 : lib16

Number of peaks found: 47 Corr. Area 1: 2,945.6
 Noise: 1.8

Peak table for sample 8 : lib16

Peak	Size [bp]	Conc. [pg/μl]	Molarity [pmol/l]	Observations
1	23	0.00	0.0	
2	29	0.00	0.0	
3	32	0.00	0.0	
4	35	125.00	5,411.3	Lower Marker
5	41	120.38	4,459.8	
6	46	119.71	3,930.8	
7	61	162.65	4,039.5	
8	68	139.19	3,109.4	
9	79	220.15	4,236.9	
10	104	530.96	7,710.0	
11	115	228.01	2,991.3	
12	132	400.30	4,578.3	
13	143	304.32	3,222.3	
14	158	345.08	3,308.5	
15	164	211.53	1,955.2	
16	176	600.48	5,162.2	
17	201	157.51	1,184.5	
18	215	146.96	1,034.4	
19	224	128.44	870.6	
20	232	313.45	2,048.9	
21	252	171.05	1,027.6	
22	265	126.02	719.3	

Assay Class: High Sensitivity DNA Assay
 Data Path: C:\... Settings\Bioanalyzer\2013-07-25\2013-07-25_002_Juliana.xad


Created: 7/25/2013 11:06:08 AM
 Modified: 7/25/2013 2:17:24 PM

Electropherogram Summary Continued ...

... Peak table for sample 8 : lib16

Peak	Size [bp]	Conc. [pg/μl]	Molarity [pmol/l]	Observations
23	276	133.34	732.2	
24	290	86.99	454.1	
25	306	73.83	365.7	
26	319	77.46	367.9	
27	333	44.25	201.1	
28	343	44.95	198.6	
29	350	46.52	201.5	
30	363	59.16	247.0	
31	376	41.15	166.0	
32	386	32.29	126.7	
33	399	41.37	157.2	
34	427	44.38	157.6	
35	439	42.22	145.7	
36	488	53.69	166.8	
37	511	56.00	166.0	
38	536	44.27	125.1	
39	564	35.57	95.5	
40	597	49.19	124.9	
41	613	40.34	99.7	
42	638	30.39	72.2	
43	657	40.01	92.2	
44	689	29.10	64.0	
45	742	30.79	62.9	
46	779	34.47	67.0	
47	891	33.32	56.6	
48	1,032	88.56	130.0	
49	▶ 10,380	75.00	10.9	Upper Marker

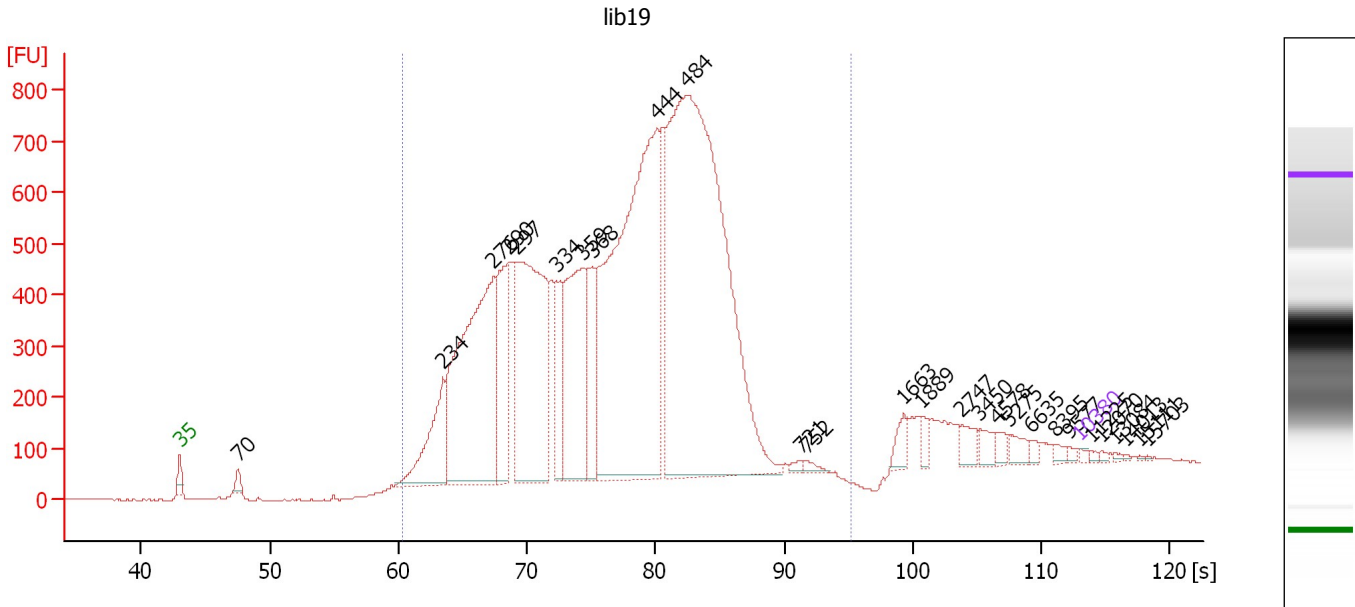
Region table for sample 8 : lib16

From [s]	To [s]	Average Size [bp]	Molarity [pmol/l]	Conc. [pg/μl]	Corr. Area % of Total	Size distribution in CV [%]	Color	
60.38	95.13	407	12,791.5	2,651.43	2,945.6	43	47.5	

Assay Class: High Sensitivity DNA Assay
 Data Path: C:\... Settings\Bioanalyzer\2013-07-25\2013-07-25_002_Juliana.xad

Created: 7/25/2013 11:06:08 AM
 Modified: 7/25/2013 2:17:24 PM

Electropherogram Summary Continued ...



Overall Results for sample 9 : lib19

Number of peaks found: 27 Corr. Area 1: 17,051.8
 Noise: 1.7

Peak table for sample 9 : lib19

Peak	Size [bp]	Conc. [pg/μl]	Molarity [pmol/l]	Observations
1	35	125.00	5,411.3	Lower Marker
2	70	400.02	8,649.9	
3	234	3,617.09	23,456.6	
4	276	13,057.97	71,576.6	
5	290	4,437.05	23,213.3	
6	297	10,873.98	55,494.3	
7	334	2,066.34	9,366.3	
8	359	6,319.19	26,660.8	
9	368	2,739.59	11,266.0	
10	444	19,828.71	67,667.2	
11	484	27,743.41	86,934.0	
12	721	153.08	321.6	
13	752	156.65	315.6	
14	1,663	459.59	418.6	
15	1,889	306.30	245.6	
16	2,747	447.40	246.8	
17	3,450	358.24	157.3	
18	4,578	262.86	87.0	
19	5,275	343.15	98.6	
20	6,635	165.90	37.9	
21	8,395	143.67	25.9	
22	9,577	98.62	15.6	
23	10,380	75.00	10.9	Upper Marker
24	11,225	0.00	0.0	
25	12,070	0.00	0.0	
26	13,084	0.00	0.0	


Assay Class: High Sensitivity DNA Assay
Data Path: C:\... Settings\Bioanalyzer\2013-07-25\2013-07-25_002_Juliana.xad

Created: 7/25/2013 11:06:08 AM
Modified: 7/25/2013 2:17:24 PM

Electropherogram Summary Continued ...**... Peak table for sample 9 : lib19**

Peak	Size [bp]	Conc. [pg/ μ l]	Molarity [pmol/l]	Observations
27	14,013	0.00	0.0	
28	15,111	0.00	0.0	
29	15,703	0.00	0.0	

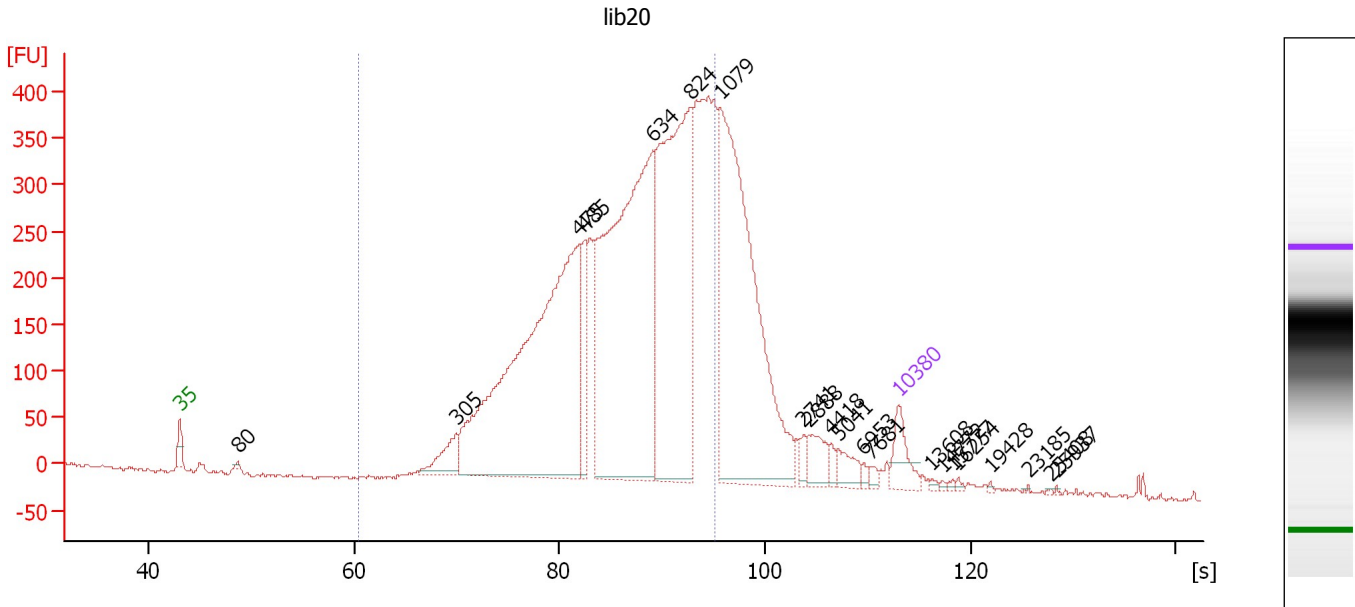
Region table for sample 9 : lib19

From [s]	To [s]	Average Size [bp]	Molarity [pmol/l]	Conc. [pg/ μ l]	Corr. Area % of Total	Size distribution in CV [%]	Color
60.38	95.13	401	407,427.5	97,298.71	17,051.8 93	25.1	

Assay Class: High Sensitivity DNA Assay
 Data Path: C:\... Settings\Bioanalyzer\2013-07-25\2013-07-25_002_Juliana.xad

Created: 7/25/2013 11:06:08 AM
 Modified: 7/25/2013 2:17:24 PM

Electropherogram Summary Continued ...



Overall Results for sample 10 : lib20

Number of peaks found: 21 Corr. Area 1: 6,977.2
 Noise: 1.6

Peak table for sample 10 : lib20


Peak	Size [bp]	Conc. [pg/μl]	Molarity [pmol/l]	Observations
1	35	125.00	5,411.3	Lower Marker
2	80	8.34	158.1	
3	305	116.81	580.7	
4	475	1,768.81	5,636.9	
5	485	181.86	568.6	
6	634	1,588.45	3,798.0	
7	824	1,148.55	2,112.0	
8	1,079	1,210.58	1,699.4	
9	2,741	22.58	12.5	
10	2,888	67.83	35.6	
11	4,418	19.93	6.8	
12	5,041	50.98	15.3	
13	6,953	10.44	2.3	
14	7,681	13.25	2.6	
15	10,380	75.00	10.9	Upper Marker
16	13,608	0.00	0.0	
17	14,772	0.00	0.0	
18	15,777	0.00	0.0	
19	16,254	0.00	0.0	
20	19,428	0.00	0.0	
21	23,185	0.00	0.0	
22	25,408	0.00	0.0	
23	25,937	0.00	0.0	

Assay Class: High Sensitivity DNA Assay
Data Path: C:\... Settings\Bioanalyzer\2013-07-25\2013-07-25_002_Juliana.xad

Created: 7/25/2013 11:06:08 AM
Modified: 7/25/2013 2:17:24 PM

Electropherogram Summary Continued ...

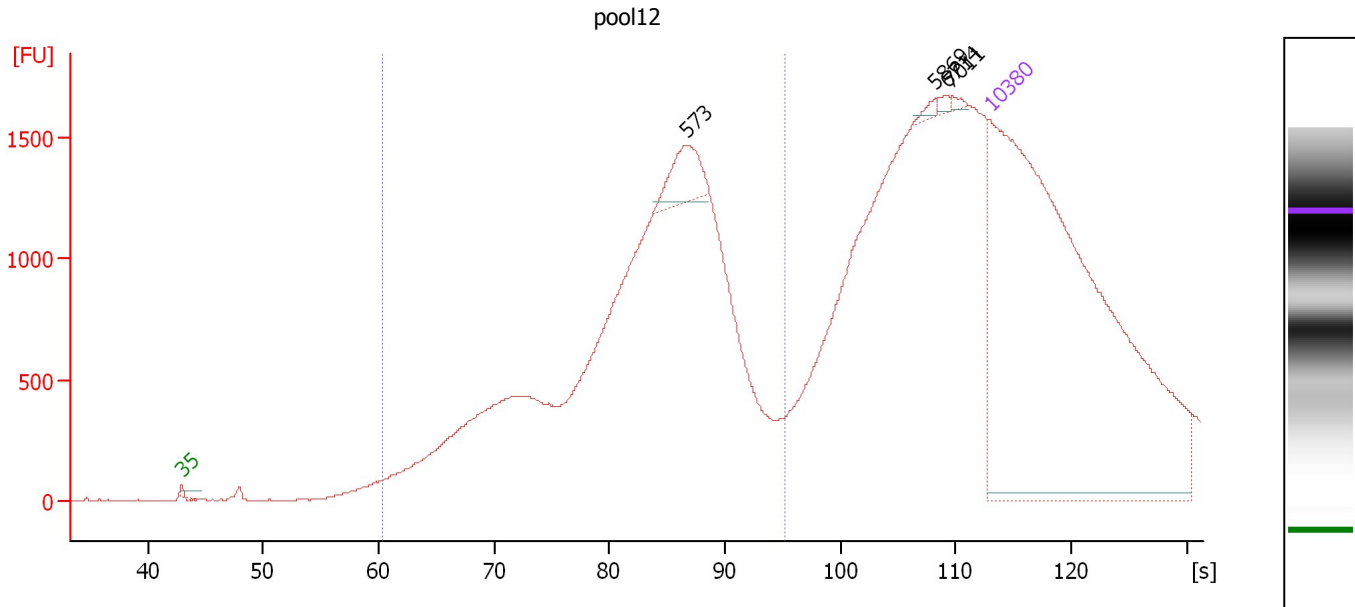
... Region table for sample 10 : lib20

From [s]	To [s]	Average Size [bp]	Molarity [pmol/l]	Conc. [pg/μl]	Corr. Area % of Total	Size distribution in CV [%]	Color	
60.38	95.13	602	16,918.2	5,919.59	6,977.2	77	29.9	

Assay Class: High Sensitivity DNA Assay
 Data Path: C:\... Settings\Bioanalyzer\2013-07-25\2013-07-25_002_Juliana.xad

Created: 7/25/2013 11:06:08 AM
 Modified: 7/25/2013 2:17:24 PM

Electropherogram Summary Continued ...



Overall Results for sample 11 : pool12

Number of peaks found: 4 Corr. Area 1: 20,381.4
 Noise: 2.7

Peak table for sample 11 : pool12

Peak	Size [bp]	Conc. [pg/µl]	Molarity [pmol/l]	Observations
1	35	125.00	5,411.3	Lower Marker
2	573	5.46	14.4	
3	5,869	0.48	0.1	
4	6,714	0.39	0.1	
5	7,011	0.28	0.1	
6	10,380	75.00	10.9	Upper Marker

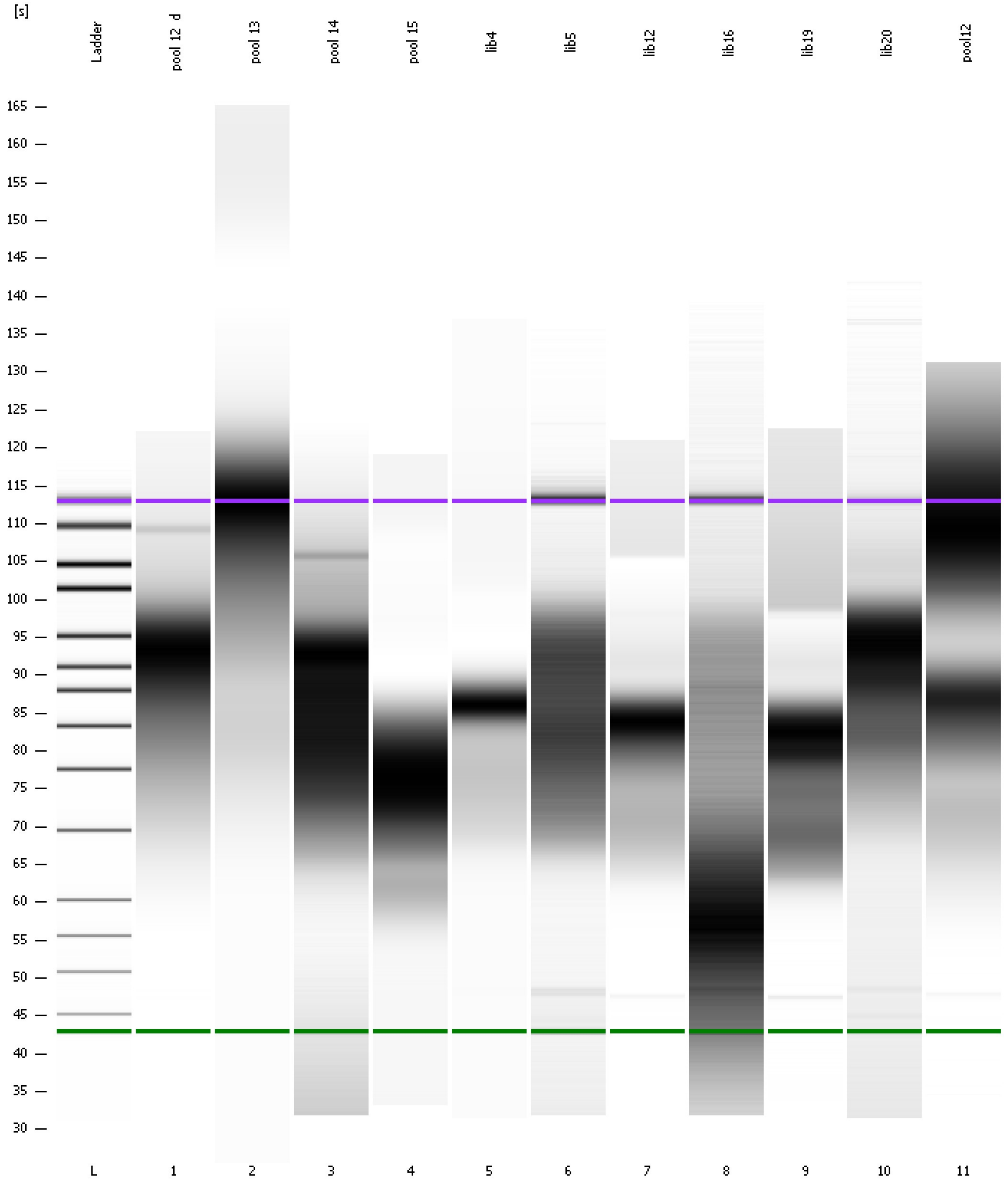
Region table for sample 11 : pool12

From [s]	To [s]	Average Size [bp]	Molarity [pmol/l]	Conc. [pg/µl]	Corr. Area % of Total	Size distribution in CV [%]	Color
60.38	95.13	514	456.9	137.96	20,381.4 56	25.7	Blue

Assay Class: High Sensitivity DNA Assay
Data Path: C:\... Settings\Bioanalyzer\2013-07-25\2013-07-25_002_Juliana.xad

Created: 7/25/2013 11:06:08 AM
Modified: 7/25/2013 2:17:24 PM

Gel Image



Assay Class: High Sensitivity DNA Assay
 Data Path: C:\... Settings\Bioanalyzer\2013-07-25\2013-07-25_002_Juliana.xad

Created: 7/25/2013 11:06:08 AM
 Modified: 7/25/2013 2:17:24 PM

Run Logbook

Description	Number	Source	Category	Sub Category	Time	Time Zone	User	Host
Run ended on port 1 (Number of wells acquired: 12)		Instrument	Run		7/25/2013 11:47:26 AM	(GMT --07:00) Pacific Standard Time	UC Davis	D8XSMGH1
Run started on port 1 (File: C:\Documents and Settings\Bioanalyzer\2013-07-25\2013-07-25_002.xad)		Instrument	Run		7/25/2013 11:06:14 AM	(GMT --07:00) Pacific Standard Time	UC Davis	D8XSMGH1
Product Number : G2938B		Instrument	Run		7/25/2013 11:06:14 AM	(GMT --07:00) Pacific Standard Time	UC Davis	D8XSMGH1
Name :		Instrument	Run		7/25/2013 11:06:14 AM	(GMT --07:00) Pacific Standard Time	UC Davis	D8XSMGH1
Vendor : Agilent Technologies		Instrument	Run		7/25/2013 11:06:14 AM	(GMT --07:00) Pacific Standard Time	UC Davis	D8XSMGH1
Serial# : DE13701086		Instrument	Run		7/25/2013 11:06:14 AM	(GMT --07:00) Pacific Standard Time	UC Davis	D8XSMGH1
Firmware : C.01.069		Instrument	Run		7/25/2013 11:06:14 AM	(GMT --07:00) Pacific Standard Time	UC Davis	D8XSMGH1
Cartridge : Electrode		Instrument	Run		7/25/2013 11:06:14 AM	(GMT --07:00) Pacific Standard Time	UC Davis	D8XSMGH1