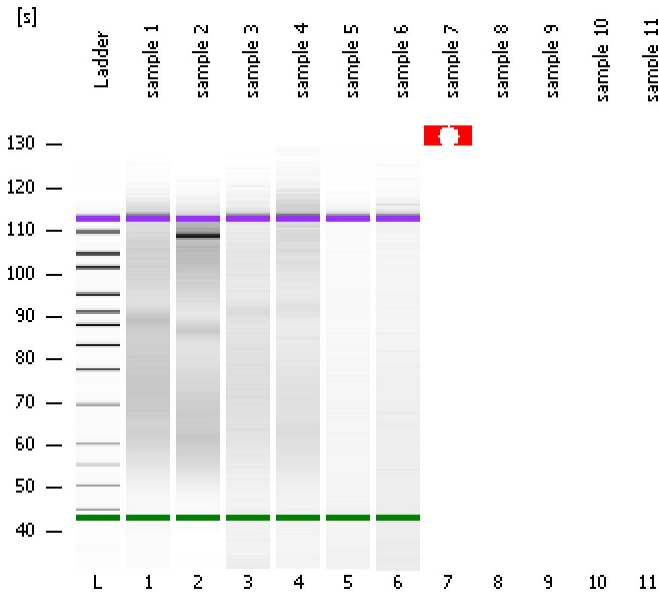


Assay Class: High Sensitivity DNA Assay
Data Path: C:\...ents and Settings\Bioanalyzer\2013-07-25\2013-07-25_004.xad

Created: 7/25/2013 12:53:34 PM
Modified: 7/25/2013 1:21:43 PM

Electrophoresis File Run Summary



Instrument Information:

Instrument Name: DE13701086 Firmware: C.01.069
Serial#: DE13701086 Type: G2938B

Assay Information:

Assay Origin Path: C:\Program Files\Agilent\2100 bioanalyzer\2100 expert\assays\dsDNA\High Sensitivity DNA.xsy
Assay Class: High Sensitivity DNA Assay
Version: 1.03
Assay Comments: Copyright © 2003-2010 Agilent Technologies

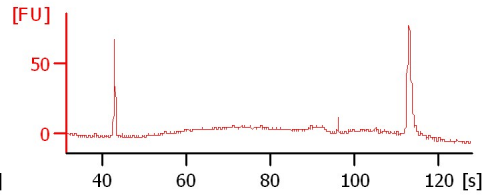
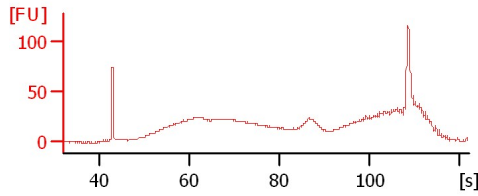
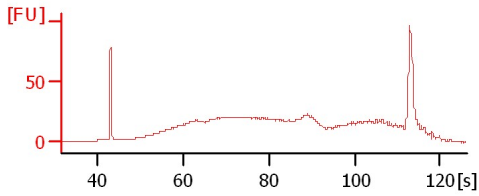
Chip Information:

Chip Lot #:
Reagent Kit Lot #:
Chip Comments:

sample 1

sample 2

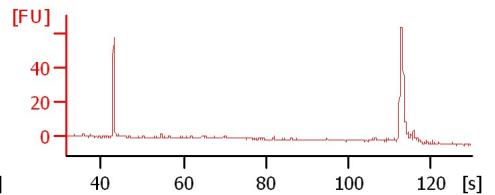
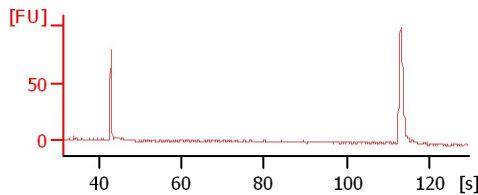
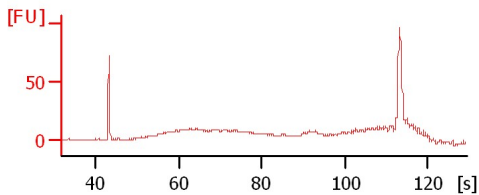
sample 3



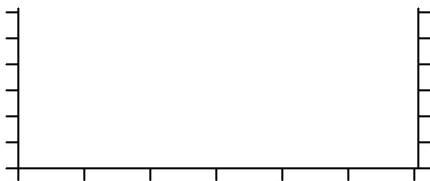
sample 4

sample 5

sample 6



sample 7



Assay Class: High Sensitivity DNA Assay
Data Path: C:\...ents and Settings\Bioanalyzer\2013-07-25\2013-07-25_004.xad

Created: 7/25/2013 12:53:34 PM
Modified: 7/25/2013 1:21:43 PM

Electrophoresis File Run Summary (Chip Summary)

Sample Name	Sample Comment	Rest. Digest	Status	Observation	Result Label	Result Color
sample 1		<input type="checkbox"/>	✓			
sample 2		<input type="checkbox"/>	✓			
sample 3		<input type="checkbox"/>	✓			
sample 4		<input type="checkbox"/>	✓			
sample 5		<input type="checkbox"/>	✓			
sample 6		<input type="checkbox"/>	✓			
sample 7		<input type="checkbox"/>	✗			
sample 8		<input type="checkbox"/>	✗			
sample 9		<input type="checkbox"/>	✗			
sample 10		<input type="checkbox"/>	✗			
sample 11		<input type="checkbox"/>	✗			
Ladder		<input type="checkbox"/>	✓			

Chip Lot #

Reagent Kit Lot #

Chip Comments :

Assay Class: High Sensitivity DNA Assay
Data Path: C:\...ents and Settings\Bioanalyzer\2013-07-25\2013-07-25_004.xad

Created: 7/25/2013 12:53:34 PM
Modified: 7/25/2013 1:21:43 PM

Electrophoresis Assay Details

General Analysis Settings

Number of Available Sample and Ladder Wells (Max.) : 12
Minimum Visible Range [s] : 32
Maximum Visible Range [s] : 138
Start Analysis Time Range [s] : 33
End Analysis Time Range [s] : 137.5
Ladder Concentration [pg/μl] : 1950
Uses Standard Area for Ladder Fragments
Lower Marker Concentration [pg/μl] : 125
Upper Marker Concentration [pg/μl] : 75
Used Upper Marker for Quantitation
Standard Curve Fit is Point to Point
Show Data Aligned to Lower and Upper Marker

Integrator Settings

Integration Start Time [s] : 33.05
Integration End Time [s] : 137
Slope Threshold : 0.8
Height Threshold [FU] : 5
Area Threshold : 0.1
Width Threshold [s] : 0.6
Baseline Plateau [s] : 0.5

Filter Settings

Filter Width [s] : 0.5
Polynomial Order : 4

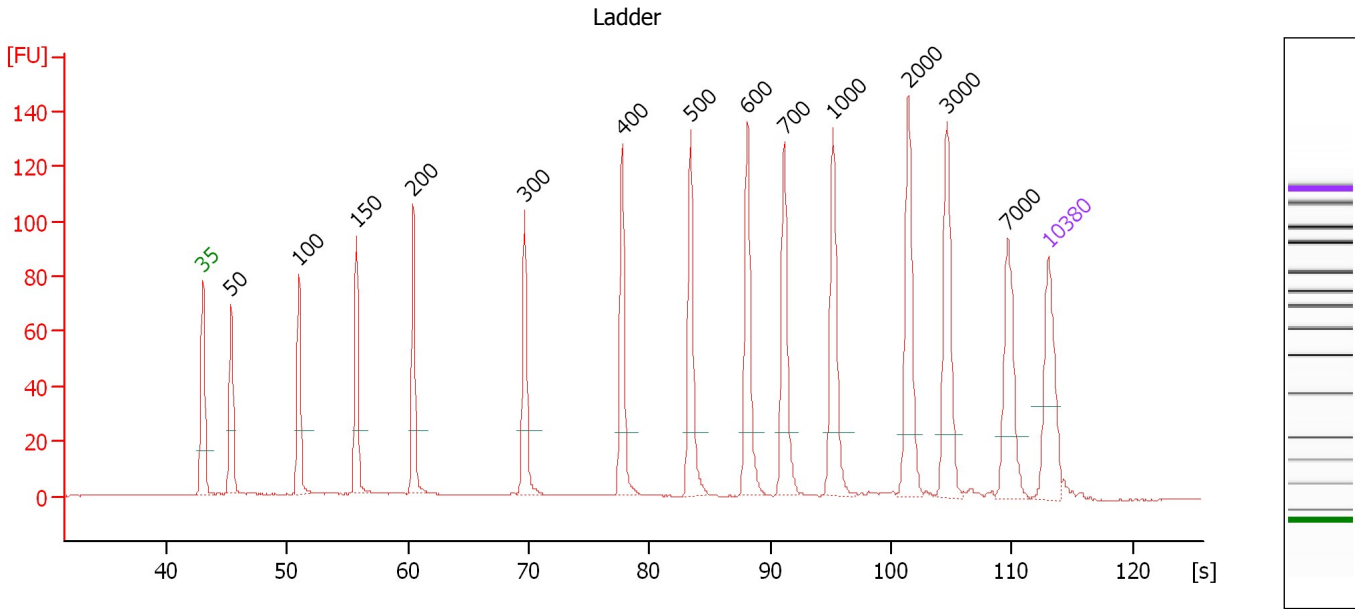
Ladder

Ladder Peak	Size	Area
1	35	160
2	50	210
3	100	208
4	150	221
5	200	242
6	300	270
7	400	305
8	500	306
9	600	336
10	700	321
11	1000	366
12	2000	413
13	3000	411
14	7000	400
15	10380	214

Assay Class: High Sensitivity DNA Assay
 Data Path: C:\...ents and Settings\Bioanalyzer\2013-07-25\2013-07-25_004.xad

Created: 7/25/2013 12:53:34 PM
 Modified: 7/25/2013 1:21:43 PM

Electropherogram Summary



Overall Results for Ladder

Noise: 0.2

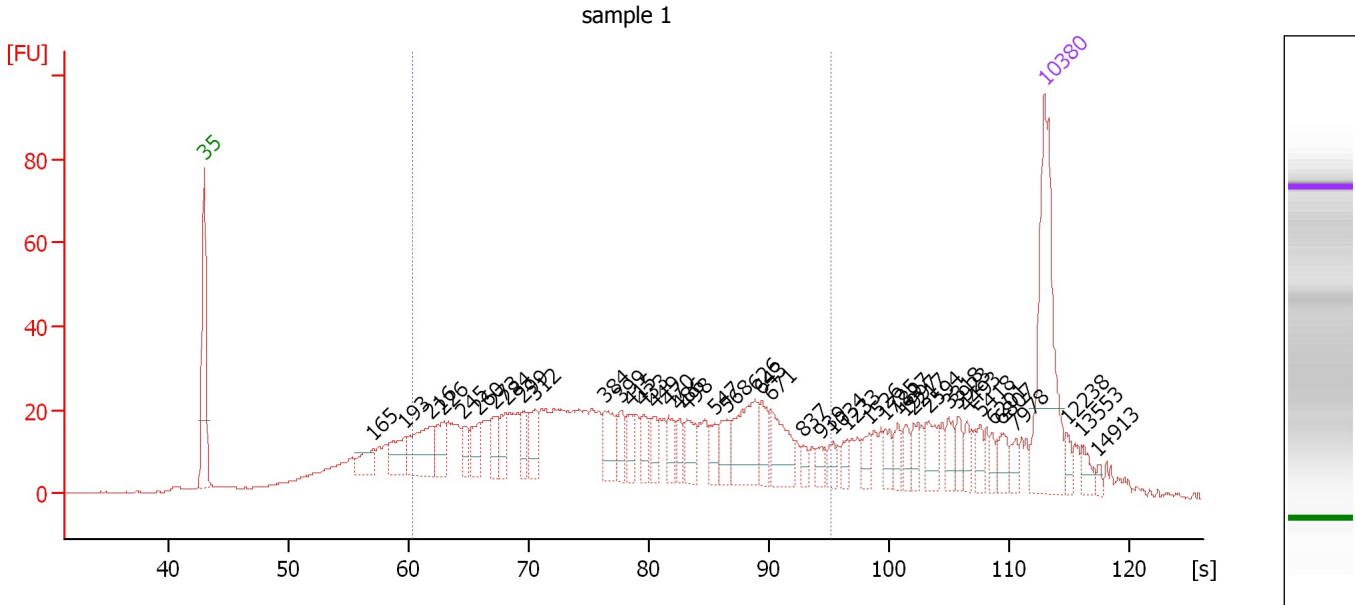
Peak table for Ladder

Peak	Size [bp]	Conc. [pg/μl]	Molarity [pmol/l]	Observations
1	35	125.00	5,411.3	Lower Marker
2	50	150.00	4,545.5	Ladder Peak
3	100	150.00	2,272.7	Ladder Peak
4	150	150.00	1,515.2	Ladder Peak
5	200	150.00	1,136.4	Ladder Peak
6	300	150.00	757.6	Ladder Peak
7	400	150.00	568.2	Ladder Peak
8	500	150.00	454.5	Ladder Peak
9	600	150.00	378.8	Ladder Peak
10	700	150.00	324.7	Ladder Peak
11	1,000	150.00	227.3	Ladder Peak
12	2,000	150.00	113.6	Ladder Peak
13	3,000	150.00	75.8	Ladder Peak
14	7,000	150.00	32.5	Ladder Peak
15	10,380	75.00	10.9	Upper Marker

Assay Class: High Sensitivity DNA Assay
 Data Path: C:\...ents and Settings\Bioanalyzer\2013-07-25\2013-07-25_004.xad

Created: 7/25/2013 12:53:34 PM
 Modified: 7/25/2013 1:21:43 PM

Electropherogram Summary Continued ...



Overall Results for sample 1 : sample 1

Number of peaks found: 43 Corr. Area 1: 836.2
 Noise: 0.2

Peak table for sample 1 : sample 1

Peak	Size [bp]	Conc. [pg/μl]	Molarity [pmol/l]	Observations
1	35	125.00	5,411.3	Lower Marker
2	165	18.08	166.5	
3	193	25.07	196.8	
4	216	43.51	305.7	
5	226	20.33	136.1	
6	245	11.94	73.9	
7	260	18.46	107.6	
8	273	15.64	86.8	
9	284	16.91	90.1	
10	299	14.02	71.1	
11	312	19.14	93.0	
12	384	23.51	92.9	
13	399	13.01	49.4	
14	415	12.62	46.0	
15	433	14.71	51.5	
16	449	13.56	45.7	
17	470	12.32	39.7	
18	486	10.46	32.6	
19	498	16.77	51.0	
20	547	10.47	29.0	
21	568	14.93	39.8	
22	626	39.34	95.2	
23	643	14.66	34.6	
24	671	27.36	61.8	
25	837	5.29	9.6	
26	939	6.41	10.3	

Assay Class: High Sensitivity DNA Assay
 Data Path: C:\...ents and Settings\Bioanalyzer\2013-07-25\2013-07-25_004.xad

Created: 7/25/2013 12:53:34 PM
 Modified: 7/25/2013 1:21:43 PM

Electropherogram Summary Continued ...

... Peak table for sample 1 : sample 1

Peak	Size [bp]	Conc. [pg/µl]	Molarity [pmol/l]	Observations
27	1,034	6.20	9.1	
28	1,233	6.45	7.9	
29	1,526	6.96	6.9	
30	1,725	7.77	6.8	
31	1,897	7.07	5.7	
32	1,997	7.08	5.4	
33	2,217	7.24	5.0	
34	2,594	12.50	7.3	
35	3,318	8.58	3.9	
36	3,923	7.08	2.7	
37	4,493	6.64	2.2	
38	5,418	6.81	1.9	
39	6,201	4.91	1.2	
40	6,807	9.33	2.1	
41	7,978	5.42	1.0	
42	10,380	75.00	10.9	Upper Marker
43	12,238	0.00	0.0	
44	13,553	0.00	0.0	
45	14,913	0.00	0.0	

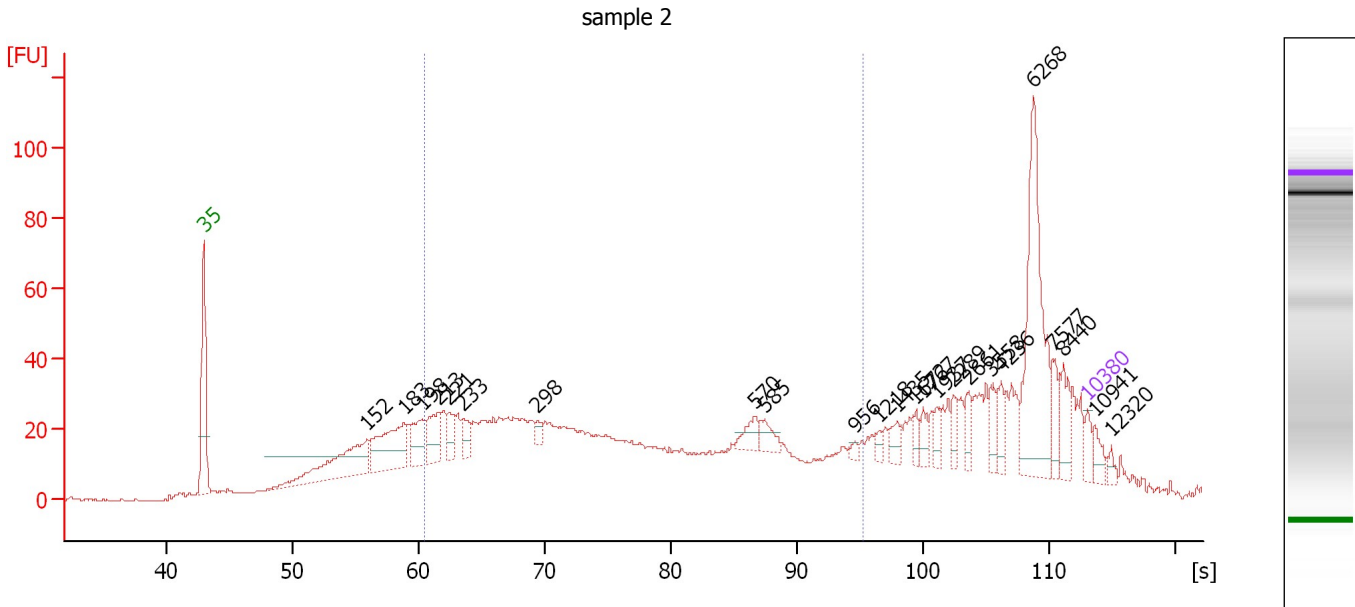
Region table for sample 1 : sample 1

From [s]	To [s]	Average Size [bp]	Molarity [pmol/l]	Conc. [pg/µl]	Corr. Area % of Total	Size distribution in CV [%]	Color
60.43	95.17	438	3,390.1	787.93	836.2	63	40.5

Assay Class: High Sensitivity DNA Assay
 Data Path: C:\...ents and Settings\Bioanalyzer\2013-07-25\2013-07-25_004.xad

Created: 7/25/2013 12:53:34 PM
 Modified: 7/25/2013 1:21:43 PM

Electropherogram Summary Continued ...



Overall Results for sample 2 : sample 2

Number of peaks found: 24 Corr. Area 1: 833.4
 Noise: 0.2

Peak table for sample 2 : sample 2


Peak	Size [bp]	Conc. [pg/μl]	Molarity [pmol/l]	Observations
1	35	125.00	5,411.3	Lower Marker
2	152	901.93	8,999.4	
3	183	707.72	5,859.8	
4	198	297.36	2,271.6	
5	213	297.03	2,112.0	
6	221	163.36	1,117.9	
7	233	144.35	938.8	
8	298	58.31	296.8	
9	570	119.44	317.2	
10	585	119.53	309.6	
11	956	28.78	45.6	
12	1,218	38.53	47.9	
13	1,435	83.29	88.0	
14	1,672	63.23	57.3	
15	1,767	72.05	61.8	
16	1,937	66.54	52.0	
17	2,289	76.65	50.7	
18	2,661	86.99	49.5	
19	3,558	111.62	47.5	
20	4,236	92.82	33.2	
21	6,268	973.21	235.3	
22	7,577	126.47	25.3	
23	8,440	173.28	31.1	
24	10,380	75.00	10.9	Upper Marker
25	10,941	0.00	0.0	
26	12,320	0.00	0.0	

Assay Class: High Sensitivity DNA Assay
Data Path: C:\...ents and Settings\Bioanalyzer\2013-07-25\2013-07-25_004.xad

Created: 7/25/2013 12:53:34 PM
Modified: 7/25/2013 1:21:43 PM

Electropherogram Summary Continued ...

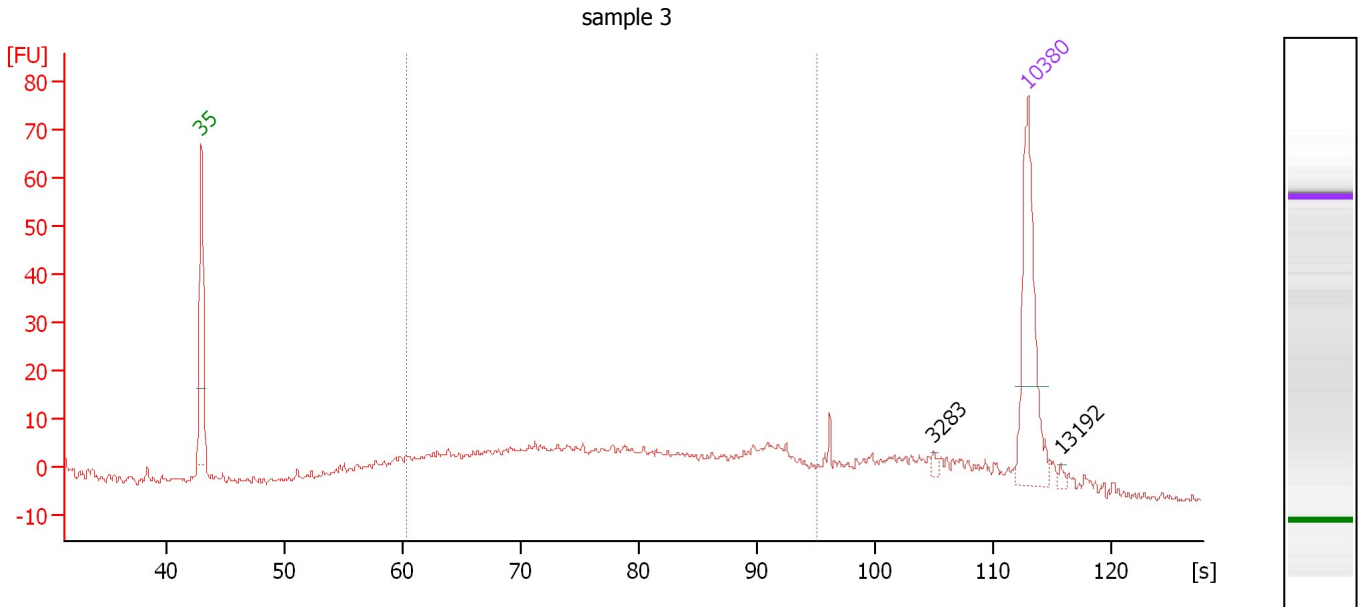
... Region table for sample 2 : sample 2

From [s]	To [s]	Average Size [bp]	Molarity [pmol/l]	Conc. [pg/μl]	Corr. Area % of Total	Size distribution in CV [%]	Color	
60.43	95.17	414	38,619.5	8,316.04	833.4	48	45.0	

Assay Class: High Sensitivity DNA Assay
 Data Path: C:\...ents and Settings\Bioanalyzer\2013-07-25\2013-07-25_004.xad

Created: 7/25/2013 12:53:34 PM
 Modified: 7/25/2013 1:21:43 PM

Electropherogram Summary Continued ...



Overall Results for sample 3 : sample 3

Number of peaks found: 2 Corr. Area 1: 306.5
 Noise: 0.8

Peak table for sample 3 : sample 3

Peak	Size [bp]	Conc. [pg/μl]	Molarity [pmol/l]	Observations
1	35	125.00	5,411.3	Lower Marker
2	3,283	2.30	1.1	
3	10,380	75.00	10.9	Upper Marker
4	13,192	0.00	0.0	

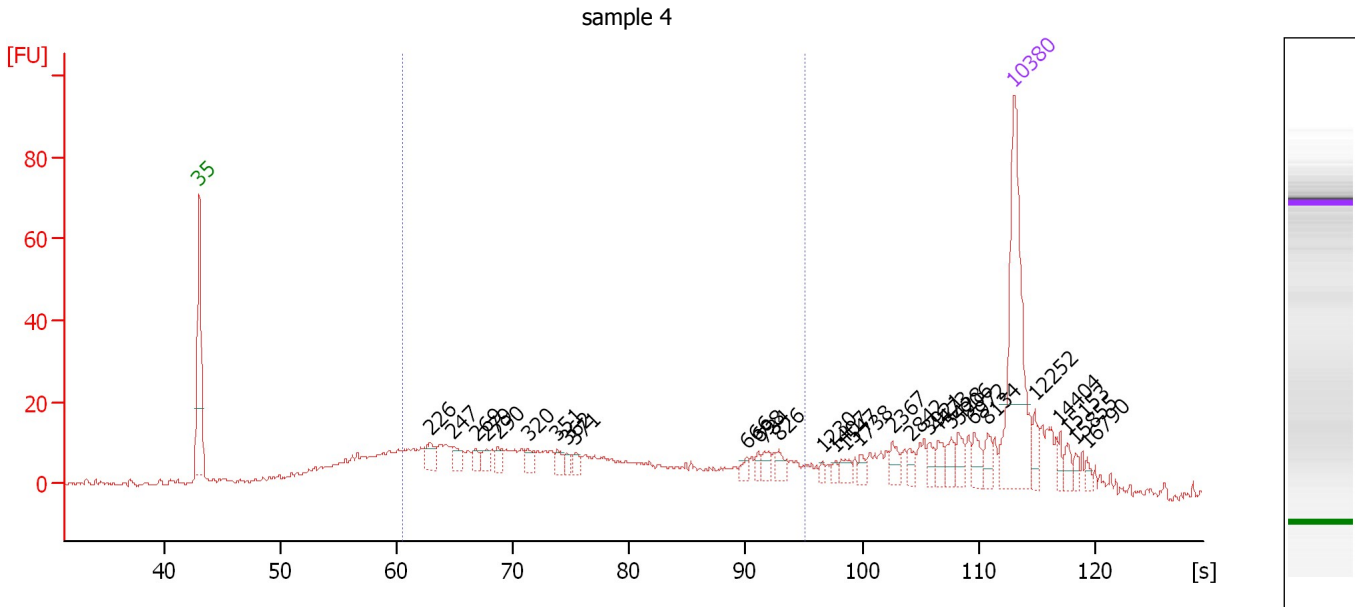
Region table for sample 3 : sample 3

From [s]	To [s]	Average Size [bp]	Molarity [pmol/l]	Conc. [pg/μl]	Corr. Area	% of Total	Size distribution in CV [%]	Color
60.43	95.17	459	1,612.0	388.23	306.5	66	41.0	Blue

Assay Class: High Sensitivity DNA Assay
 Data Path: C:\...ents and Settings\Bioanalyzer\2013-07-25\2013-07-25_004.xad

Created: 7/25/2013 12:53:34 PM
 Modified: 7/25/2013 1:21:43 PM

Electropherogram Summary Continued ...



Overall Results for sample 4 : sample 4

Number of peaks found: 30 Corr. Area 1: 375.4
 Noise: 0.5

Peak table for sample 4 : sample 4

Peak	Size [bp]	Conc. [pg/μl]	Molarity [pmol/l]	Observations
1	35	125.00	5,411.3	Lower Marker
2	226	12.13	81.2	
3	247	8.17	50.0	
4	269	5.88	33.1	
5	279	7.03	38.1	
6	290	7.30	38.2	
7	320	6.73	31.9	
8	351	5.95	25.7	
9	362	4.13	17.3	
10	371	4.28	17.5	
11	666	3.85	8.7	
12	698	3.92	8.5	
13	734	5.75	11.9	
14	826	6.13	11.2	
15	1,230	2.18	2.7	
16	1,407	2.45	2.6	
17	1,547	4.98	4.9	
18	1,738	3.60	3.1	
19	2,367	6.39	4.1	
20	2,842	4.07	2.2	
21	3,921	4.18	1.6	
22	4,473	6.27	2.1	
23	5,428	6.28	1.8	
24	5,906	7.04	1.8	
25	6,972	7.46	1.6	
26	8,134	6.42	1.2	

Assay Class: High Sensitivity DNA Assay
 Data Path: C:\...ents and Settings\Bioanalyzer\2013-07-25\2013-07-25_004.xad

Created: 7/25/2013 12:53:34 PM
 Modified: 7/25/2013 1:21:43 PM

Electropherogram Summary Continued ...

... Peak table for sample 4 : sample 4

Peak	Size [bp]	Conc. [pg/μl]	Molarity [pmol/l]	Observations
27	10,380	75.00	10.9	Upper Marker
28	12,252	0.00	0.0	
29	14,404	0.00	0.0	
30	15,153	0.00	0.0	
31	15,855	0.00	0.0	
32	16,790	0.00	0.0	

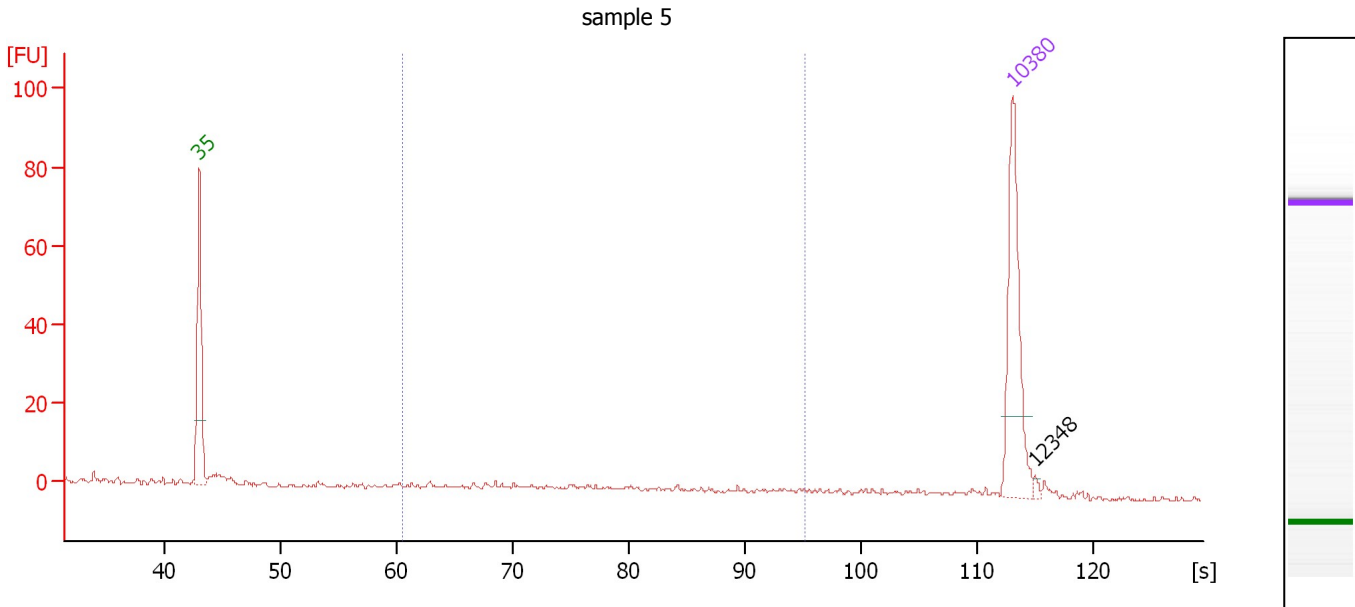
Region table for sample 4 : sample 4

From [s]	To [s]	Average Size [bp]	Molarity [pmol/l]	Conc. [pg/μl]	Corr. Area % of Total	Size distribution in CV [%]	Color
60.43	95.17	430	1,748.9	386.44	375.4	50	45.9

Assay Class: High Sensitivity DNA Assay
 Data Path: C:\...ents and Settings\Bioanalyzer\2013-07-25\2013-07-25_004.xad

Created: 7/25/2013 12:53:34 PM
 Modified: 7/25/2013 1:21:43 PM

Electropherogram Summary Continued ...



Overall Results for sample 5 : sample 5

Number of peaks found: 1 Corr. Area 1: 17.9
 Noise: 0.4

Peak table for sample 5 : sample 5

Peak	Size [bp]	Conc. [pg/μl]	Molarity [pmol/l]	Observations
1	35	125.00	5,411.3	Lower Marker
2	10,380	75.00	10.9	Upper Marker
3	12,348	0.00	0.0	

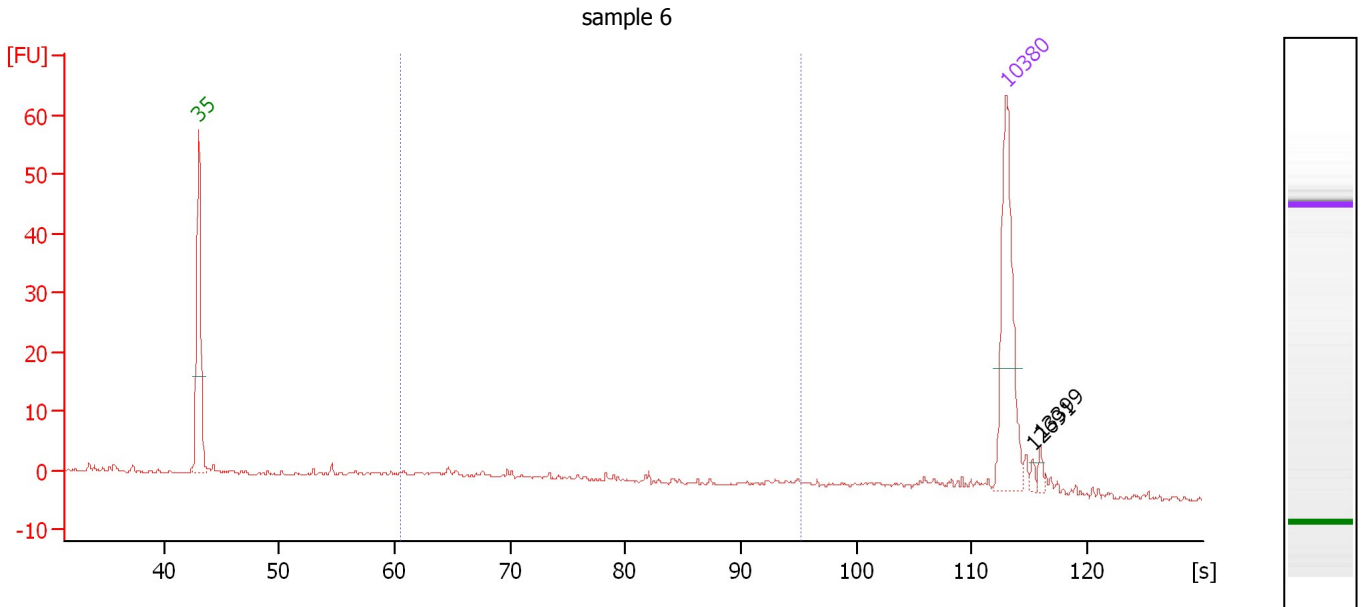
Region table for sample 5 : sample 5

From [s]	To [s]	Average Size [bp]	Molarity [pmol/l]	Conc. [pg/μl]	Corr. Area	% of Total	Size distribution in CV [%]	Color
60.43	95.17	448	84.0	19.73	17.9	32	44.6	Blue

Assay Class: High Sensitivity DNA Assay
 Data Path: C:\...ents and Settings\Bioanalyzer\2013-07-25\2013-07-25_004.xad

Created: 7/25/2013 12:53:34 PM
 Modified: 7/25/2013 1:21:43 PM

Electropherogram Summary Continued ...



Overall Results for sample 6 : sample 6

Number of peaks found: 2 Corr. Area 1: 46.5
 Noise: 0.2

Peak table for sample 6 : sample 6

Peak	Size [bp]	Conc. [pg/μl]	Molarity [pmol/l]	Observations
1	35	125.00	5,411.3	Lower Marker
2	10,380	75.00	10.9	Upper Marker
3	12,691	0.00	0.0	
4	13,399	0.00	0.0	

Region table for sample 6 : sample 6

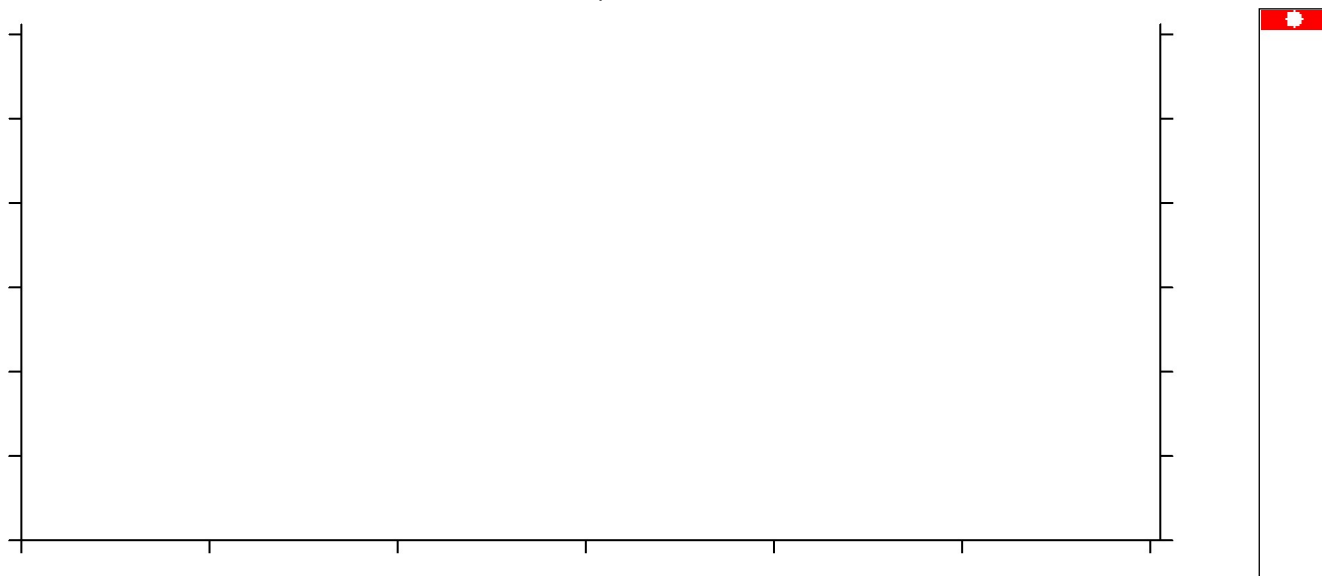
From [s]	To [s]	Average Size [bp]	Molarity [pmol/l]	Conc. [pg/μl]	Corr. Area % of Total	Size distribution in CV [%]	Color	
60.43	95.17	450	336.7	76.65	46.5	41	46.6	Blue

Assay Class: High Sensitivity DNA Assay
Data Path: C:\...ents and Settings\Bioanalyzer\2013-07-25\2013-07-25_004.xad

Created: 7/25/2013 12:53:34 PM
Modified: 7/25/2013 1:21:43 PM

Electropherogram Summary Continued ...

sample 7



Setpoint Deviations for sample 7 : sample 7

End Analysis Time Range [s] : 31.65

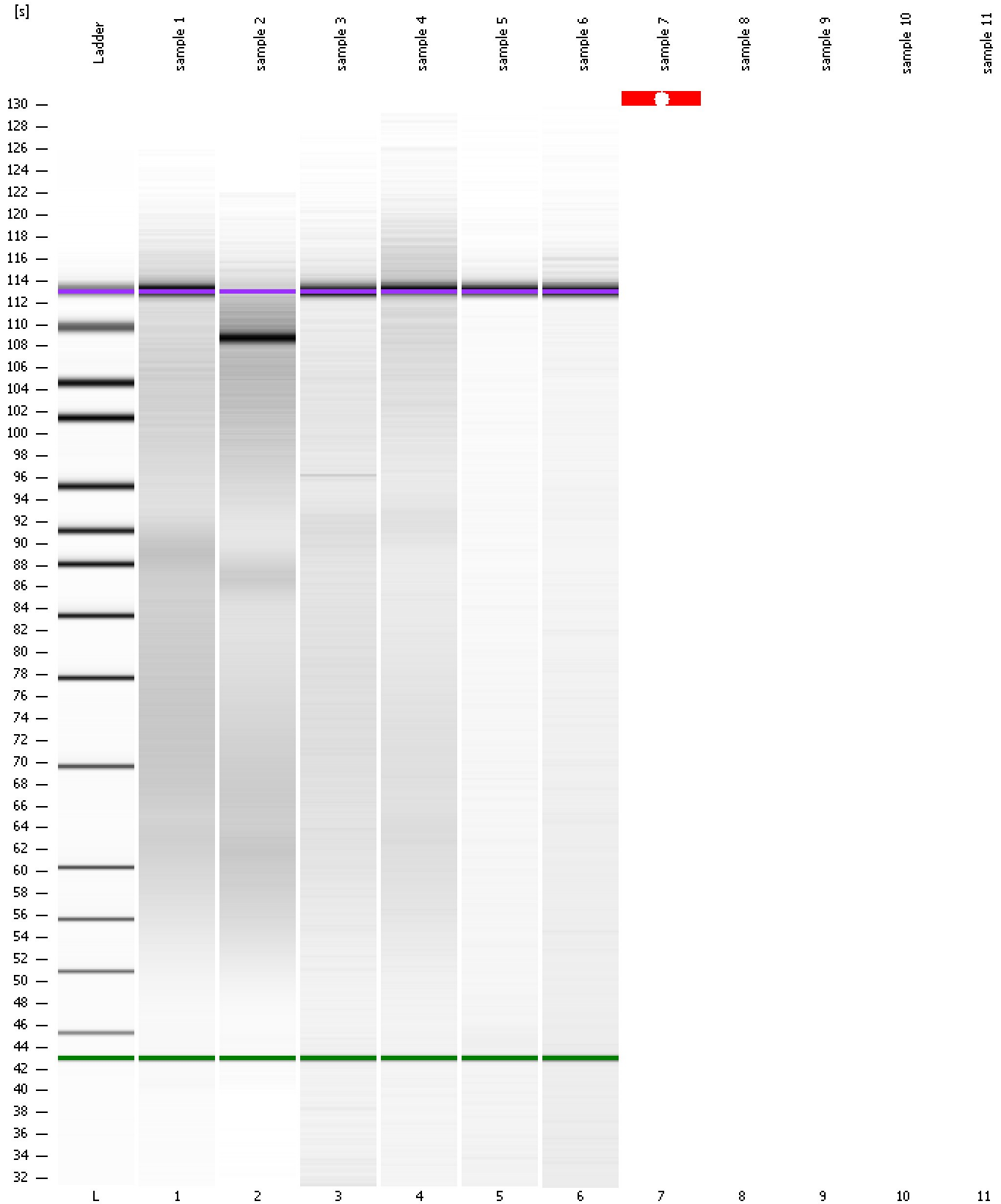
Overall Results for sample 7 : sample 7

Noise: 0.2

Assay Class: High Sensitivity DNA Assay
Data Path: C:\...ents and Settings\Bioanalyzer\2013-07-25\2013-07-25_004.xad

Created: 7/25/2013 12:53:34 PM
Modified: 7/25/2013 1:21:43 PM

Gel Image



Assay Class: High Sensitivity DNA Assay
Data Path: C:\...ents and Settings\Bioanalyzer\2013-07-25\2013-07-25_004.xad

Created: 7/25/2013 12:53:34 PM
Modified: 7/25/2013 1:21:43 PM

Invalid Samples

Sample 8 has not been run, no results available.

Sample 9 has not been run, no results available.

Sample 10 has not been run, no results available.

Sample 11 has not been run, no results available.

Assay Class: High Sensitivity DNA Assay
 Data Path: C:\...ents and Settings\Bioanalyzer\2013-07-25\2013-07-25_004.xad

Created: 7/25/2013 12:53:34 PM
 Modified: 7/25/2013 1:21:43 PM

Run Logbook

Description	Number	Source	Category	Sub Category	Time	Time Zone	User	Host
Run aborted on port 1		Instrument	Run		7/25/2013 1:21:41 PM	(GMT --07:00) Pacific Standard Time	UC Davis	D8XSMGH1
Run started on port 1 (File: C:\Documents and Settings\Bioanalyzer\2013-07-25\2013-07-25_004.xad)		Instrument	Run		7/25/2013 12:53:40 PM	(GMT --07:00) Pacific Standard Time	UC Davis	D8XSMGH1
Product Number : G2938B		Instrument	Run		7/25/2013 12:53:40 PM	(GMT --07:00) Pacific Standard Time	UC Davis	D8XSMGH1
Name :		Instrument	Run		7/25/2013 12:53:40 PM	(GMT --07:00) Pacific Standard Time	UC Davis	D8XSMGH1
Vendor : Agilent Technologies		Instrument	Run		7/25/2013 12:53:40 PM	(GMT --07:00) Pacific Standard Time	UC Davis	D8XSMGH1
Serial# : DE13701086		Instrument	Run		7/25/2013 12:53:40 PM	(GMT --07:00) Pacific Standard Time	UC Davis	D8XSMGH1
Firmware : C.01.069		Instrument	Run		7/25/2013 12:53:40 PM	(GMT --07:00) Pacific Standard Time	UC Davis	D8XSMGH1
Cartridge : Electrode		Instrument	Run		7/25/2013 12:53:40 PM	(GMT --07:00) Pacific Standard Time	UC Davis	D8XSMGH1