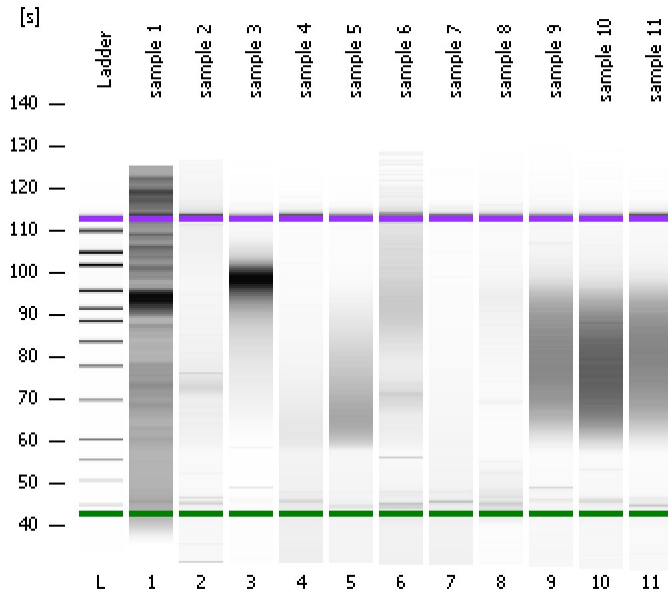


Assay Class: High Sensitivity DNA Assay
Data Path: C:\...ents and Settings\Bioanalyzer\2013-07-25\2013-07-25_006.xad

Created: 7/25/2013 3:11:09 PM
Modified: 7/25/2013 4:03:59 PM

Electrophoresis File Run Summary



Instrument Information:

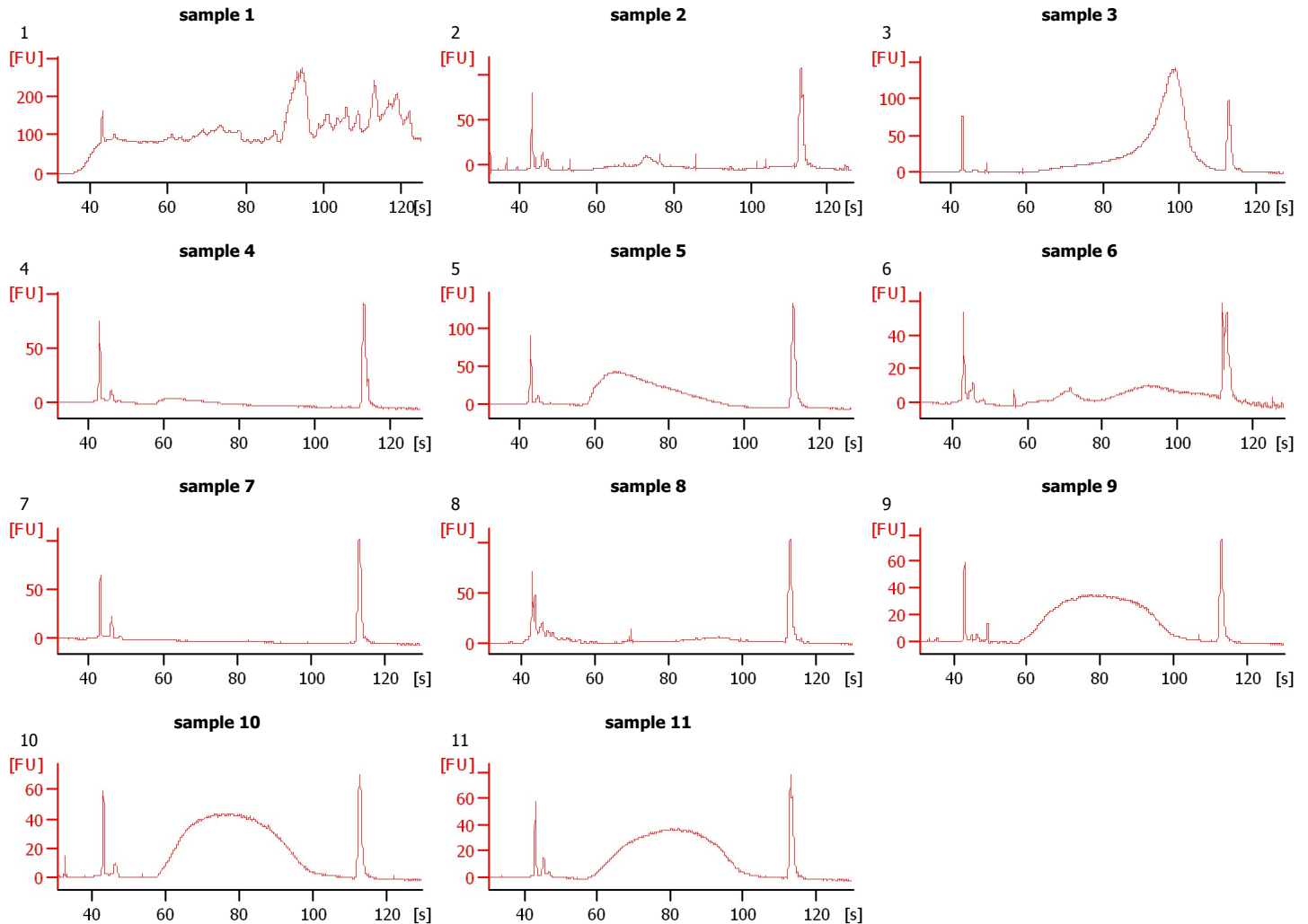
Instrument Name: DE13701086 Firmware: C.01.069
Serial#: DE13701086 Type: G2938B

Assay Information:

Assay Origin Path: C:\Program Files\Agilent\2100 bioanalyzer\2100 expert\assays\dsDNA\High Sensitivity DNA.xsy
Assay Class: High Sensitivity DNA Assay
Version: 1.03
Assay Comments: Copyright © 2003-2010 Agilent Technologies

Chip Information:

Chip Lot #: Reagent Kit Lot #: Chip Comments:



Assay Class: High Sensitivity DNA Assay
 Data Path: C:\...ents and Settings\Bioanalyzer\2013-07-25\2013-07-25_006.xad

Created: 7/25/2013 3:11:09 PM
 Modified: 7/25/2013 4:03:59 PM

Electrophoresis File Run Summary (Chip Summary)

Sample Name	Sample Comment	Rest. Digest	Status	Observation	Result Label	Result Color
sample 1	1	<input type="checkbox"/>	✓			
sample 2	2	<input type="checkbox"/>	✓			
sample 3	3	<input type="checkbox"/>	✓			
sample 4	4	<input type="checkbox"/>	✓			
sample 5	5	<input type="checkbox"/>	✓			
sample 6	6	<input type="checkbox"/>	✓			
sample 7	7	<input type="checkbox"/>	✓			
sample 8	8	<input type="checkbox"/>	✓			
sample 9	9	<input type="checkbox"/>	✓			
sample 10	10	<input type="checkbox"/>	✓			
sample 11	11	<input type="checkbox"/>	✓			
Ladder		<input type="checkbox"/>	✓			

Chip Lot #

Reagent Kit Lot #

Chip Comments :

Assay Class: High Sensitivity DNA Assay
Data Path: C:\...ents and Settings\Bioanalyzer\2013-07-25\2013-07-25_006.xad

Created: 7/25/2013 3:11:09 PM
Modified: 7/25/2013 4:03:59 PM

Electrophoresis Assay Details

General Analysis Settings

Number of Available Sample and Ladder Wells (Max.) : 12
Minimum Visible Range [s] : 32
Maximum Visible Range [s] : 138
Start Analysis Time Range [s] : 33
End Analysis Time Range [s] : 137.5
Ladder Concentration [pg/μl] : 1950
Uses Standard Area for Ladder Fragments
Lower Marker Concentration [pg/μl] : 125
Upper Marker Concentration [pg/μl] : 75
Used Upper Marker for Quantitation
Standard Curve Fit is Point to Point
Show Data Aligned to Lower and Upper Marker

Integrator Settings

Integration Start Time [s] : 33.05
Integration End Time [s] : 137
Slope Threshold : 0.8
Height Threshold [FU] : 5
Area Threshold : 0.1
Width Threshold [s] : 0.6
Baseline Plateau [s] : 0.5

Filter Settings

Filter Width [s] : 0.5
Polynomial Order : 4

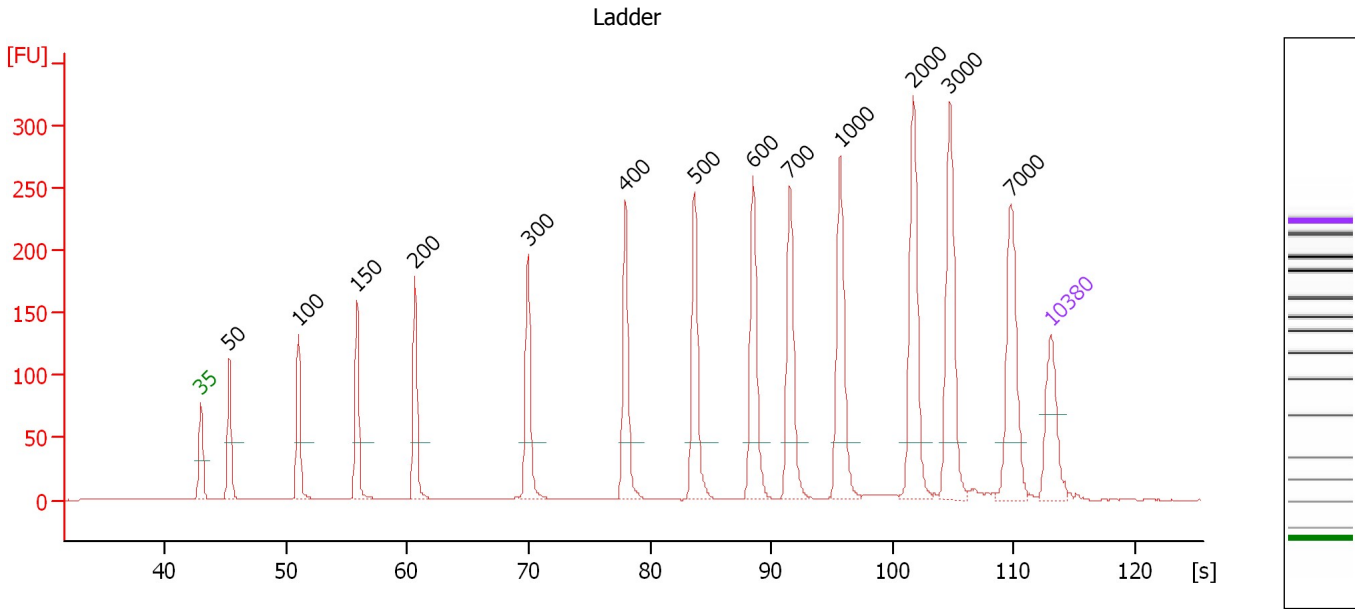
Ladder

Ladder Peak	Size	Area
1	35	160
2	50	210
3	100	208
4	150	221
5	200	242
6	300	270
7	400	305
8	500	306
9	600	336
10	700	321
11	1000	366
12	2000	413
13	3000	411
14	7000	400
15	10380	214

Assay Class: High Sensitivity DNA Assay
 Data Path: C:\...ents and Settings\Bioanalyzer\2013-07-25\2013-07-25_006.xad

Created: 7/25/2013 3:11:09 PM
 Modified: 7/25/2013 4:03:59 PM

Electropherogram Summary



Overall Results for Ladder

Noise: 0.1

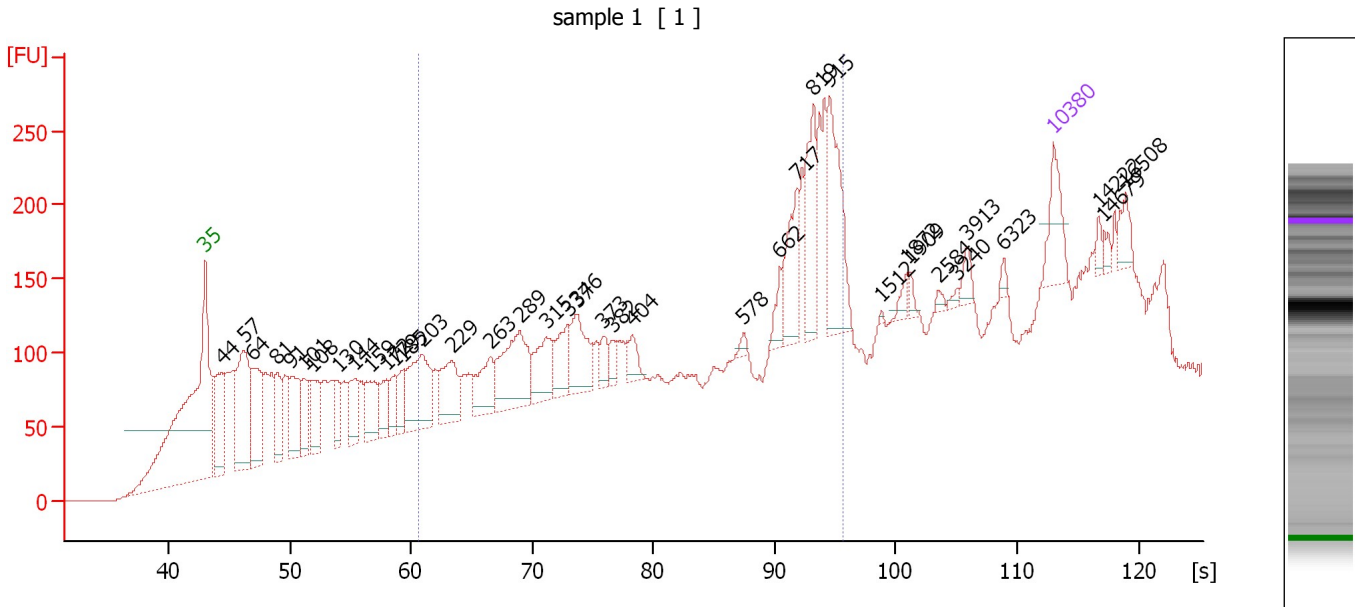
Peak table for Ladder

Peak	Size [bp]	Conc. [pg/μl]	Molarity [pmol/l]	Observations
1	35	125.00	5,411.3	Lower Marker
2	50	150.00	4,545.5	Ladder Peak
3	100	150.00	2,272.7	Ladder Peak
4	150	150.00	1,515.2	Ladder Peak
5	200	150.00	1,136.4	Ladder Peak
6	300	150.00	757.6	Ladder Peak
7	400	150.00	568.2	Ladder Peak
8	500	150.00	454.5	Ladder Peak
9	600	150.00	378.8	Ladder Peak
10	700	150.00	324.7	Ladder Peak
11	1,000	150.00	227.3	Ladder Peak
12	2,000	150.00	113.6	Ladder Peak
13	3,000	150.00	75.8	Ladder Peak
14	7,000	150.00	32.5	Ladder Peak
15	10,380	75.00	10.9	Upper Marker

Assay Class: High Sensitivity DNA Assay
 Data Path: C:\...ents and Settings\Bioanalyzer\2013-07-25\2013-07-25_006.xad

Created: 7/25/2013 3:11:09 PM
 Modified: 7/25/2013 4:03:59 PM

Electropherogram Summary Continued ...



Overall Results for sample 1 : sample 1

Number of peaks found: 38 Corr. Area 1: 3,391.1
 Noise: 0.2

Peak table for sample 1 : sample 1

Peak	Size [bp]	Conc. [pg/μl]	Molarity [pmol/l]	Observations
1	35	125.00	5,411.3	Lower Marker
2	44	216.86	7,456.0	
3	57	351.71	9,284.0	
4	64	242.26	5,735.7	
5	81	126.30	2,349.1	
6	91	187.23	3,111.9	
7	101	113.71	1,705.5	
8	108	126.69	1,778.8	
9	130	79.02	921.2	
10	144	111.85	1,175.2	
11	159	125.79	1,202.4	
12	172	88.79	782.3	
13	179	62.93	531.6	
14	185	60.76	497.8	
15	203	242.25	1,811.5	
16	229	143.46	947.8	
17	263	115.56	665.3	
18	289	239.52	1,254.0	
19	315	125.66	604.9	
20	337	97.89	439.8	
21	346	135.49	593.2	
22	373	39.94	162.2	
23	382	27.99	110.9	
24	404	44.05	165.2	
25	578	11.05	29.0	
26	662	38.83	88.8	

Assay Class: High Sensitivity DNA Assay
 Data Path: C:\...ents and Settings\Bioanalyzer\2013-07-25\2013-07-25_006.xad


Created: 7/25/2013 3:11:09 PM
 Modified: 7/25/2013 4:03:59 PM

Electropherogram Summary Continued ...

... Peak table for sample 1 : sample 1

Peak	Size [bp]	Conc. [pg/μl]	Molarity [pmol/l]	Observations
27	717	132.27	279.4	
28	819	154.20	285.1	
29	915	205.81	340.7	
30	1,512	2.83	2.8	
31	1,872	18.10	14.6	
32	1,909	12.06	9.6	
33	2,584	7.84	4.6	
34	3,240	7.33	3.4	
35	3,913	23.84	9.2	
36	6,323	9.55	2.3	
37	10,380	75.00	10.9	Upper Marker
38	14,222	0.00	0.0	
39	14,679	0.00	0.0	
40	16,508	0.00	0.0	

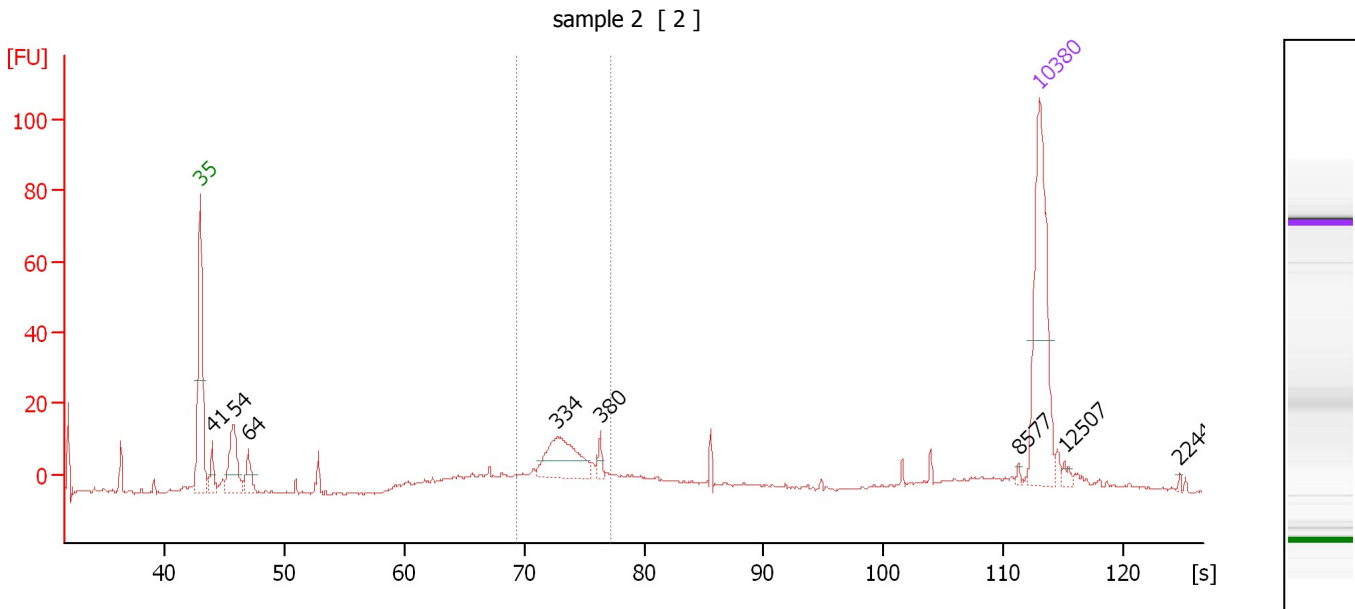
Region table for sample 1 : sample 1

From [s]	To [s]	Average Size [bp]	Molarity [pmol/l]	Conc. [pg/μl]	Corr. Area % of Total	Size distribution in CV [%]	Color	
60.65	95.70	526	15,504.1	3,850.51	3,391.1	46	46.7	

Assay Class: High Sensitivity DNA Assay
 Data Path: C:\...ents and Settings\Bioanalyzer\2013-07-25\2013-07-25_006.xad

Created: 7/25/2013 3:11:09 PM
 Modified: 7/25/2013 4:03:59 PM

Electropherogram Summary Continued ...



Overall Results for sample 2 : sample 2

Number of peaks found: 8 Corr. Area 1: 107.0
 Noise: 0.4

Peak table for sample 2 : sample 2

Peak	Size [bp]	Conc. [pg/μl]	Molarity [pmol/l]	Observations
1	35	125.00	5,411.3	Lower Marker
2	41	13.69	502.1	
3	54	45.78	1,289.6	
4	64	17.01	400.3	
5	334	49.03	222.4	
6	380	6.41	25.6	
7	8,577	1.06	0.2	
8	10,380	75.00	10.9	Upper Marker
9	12,507	0.00	0.0	
10	22,446	0.00	0.0	

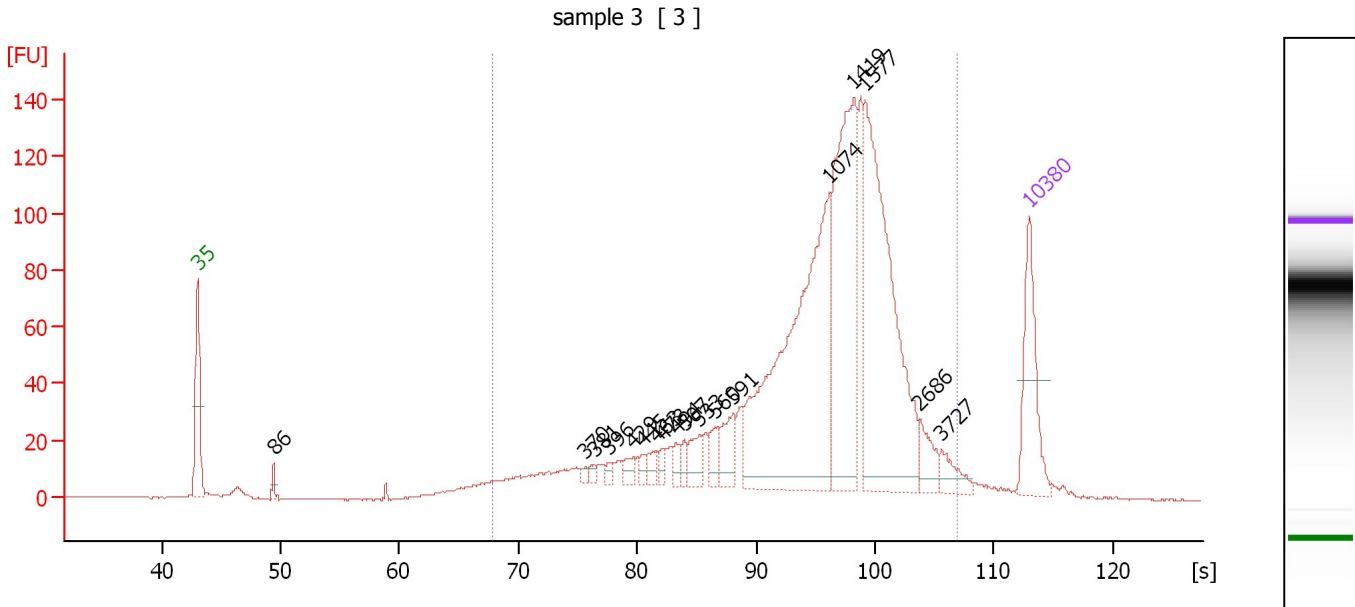
Region table for sample 2 : sample 2

From [s]	To [s]	Average Size [bp]	Molarity [pmol/l]	Conc. [pg/μl]	Corr. Area % of Total	Size distribution in CV [%]	Color
69.43	77.29	344	452.5	102.61	107.0 27	7.0	Blue

Assay Class: High Sensitivity DNA Assay
 Data Path: C:\...ents and Settings\Bioanalyzer\2013-07-25\2013-07-25_006.xad

Created: 7/25/2013 3:11:09 PM
 Modified: 7/25/2013 4:03:59 PM

Electropherogram Summary Continued ...



Overall Results for sample 3 : sample 3

Number of peaks found: 18 Corr. Area 1: 1,735.4
 Noise: 0.2

Peak table for sample 3 : sample 3

Peak	Size [bp]	Conc. [pg/μl]	Molarity [pmol/l]	Observations
1	35	125.00	5,411.3	Lower Marker
2	86	10.43	184.5	
3	370	5.30	21.7	
4	381	5.52	22.0	
5	396	6.88	26.3	
6	429	12.59	44.4	
7	445	8.65	29.4	
8	463	14.87	48.6	
9	473	9.62	30.8	
10	494	10.90	33.4	
11	507	11.20	33.5	
12	533	24.76	70.4	
13	560	18.76	50.8	
14	591	34.91	89.5	
15	1,074	388.91	548.7	
16	1,419	239.17	255.3	
17	1,577	297.38	285.7	
18	2,686	25.98	14.7	
19	3,727	20.00	8.1	
20	10,380	75.00	10.9	Upper Marker

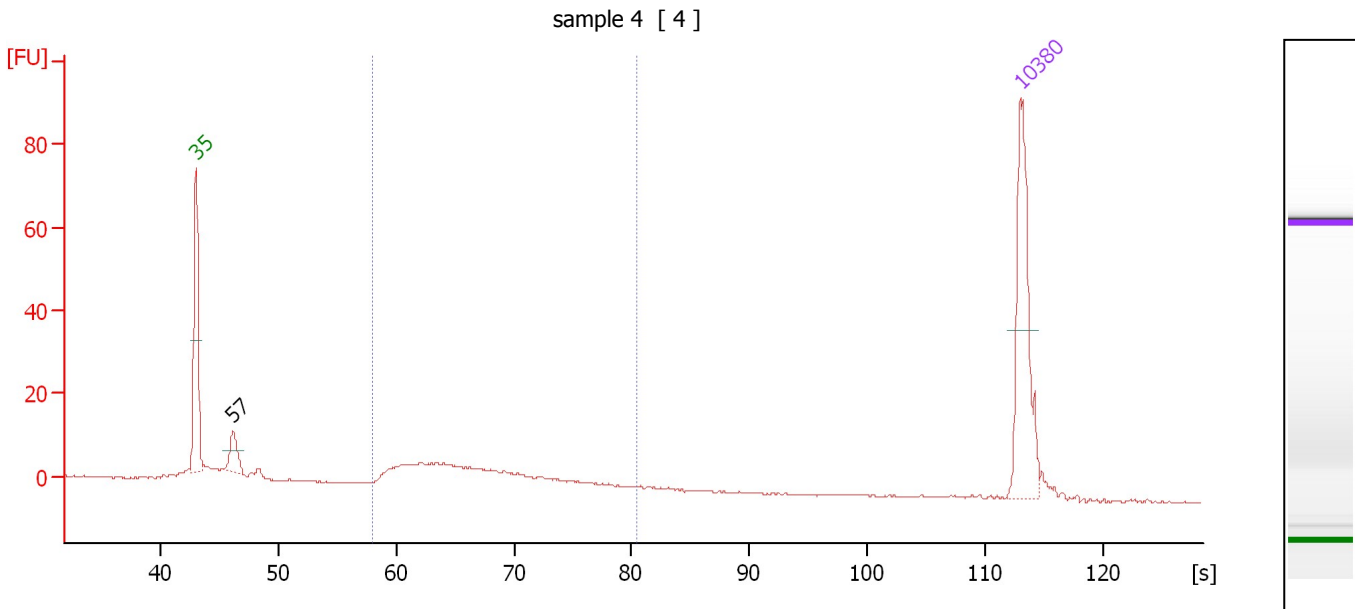
Region table for sample 3 : sample 3

From [s]	To [s]	Average Size [bp]	Molarity [pmol/l]	Conc. [pg/μl]	Corr. Area	% of Total	Size distribution in CV [%]	Color
67.92	106.83	1,225	2,891.8	1,526.36	1,735.4	95	56.2	Blue

Assay Class: High Sensitivity DNA Assay
 Data Path: C:\...ents and Settings\Bioanalyzer\2013-07-25\2013-07-25_006.xad

Created: 7/25/2013 3:11:09 PM
 Modified: 7/25/2013 4:03:59 PM

Electropherogram Summary Continued ...



Overall Results for sample 4 : sample 4

Number of peaks found: 1 Corr. Area 1: 100.3
 Noise: 0.2

Peak table for sample 4 : sample 4

Peak	Size [bp]	Conc. [pg/μl]	Molarity [pmol/l]	Observations
1	35	125.00	5,411.3	Lower Marker
2	57	25.31	672.5	
3	10,380	75.00	10.9	Upper Marker

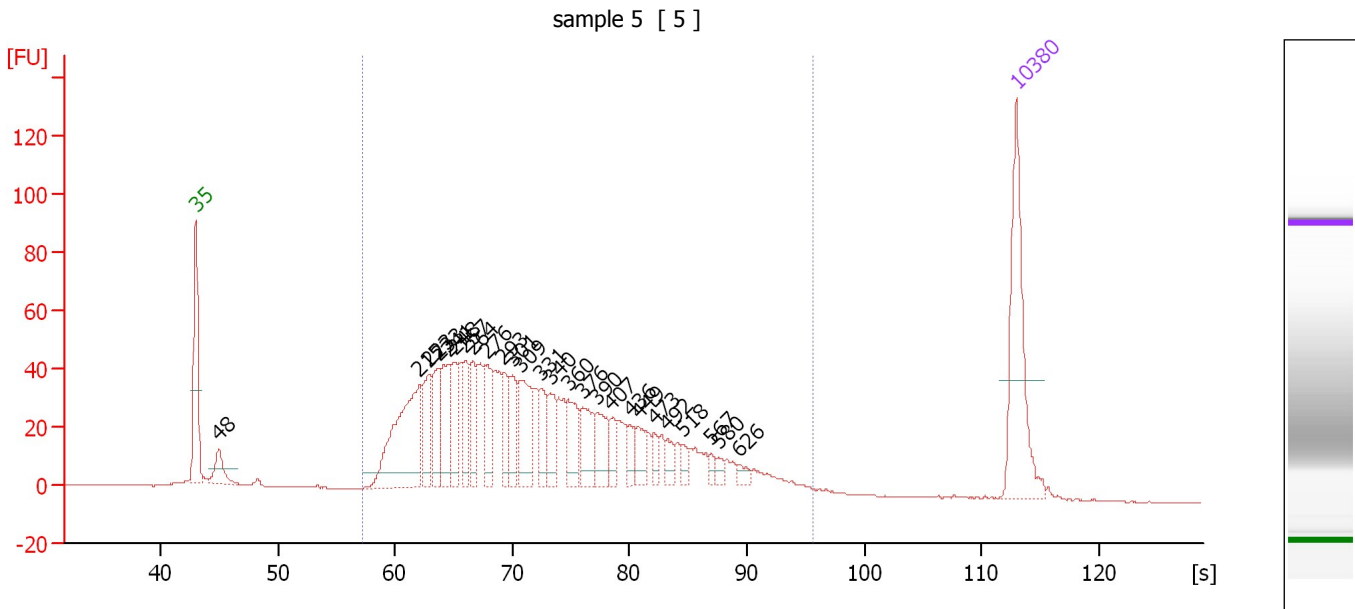
Region table for sample 4 : sample 4

From [s]	To [s]	Average Size [bp]	Molarity [pmol/l]	Conc. [pg/μl]	Corr. Area % of Total	Size distribution in CV [%]	Color
57.92	80.46	266	742.2	123.01	100.3 63	22.2	Blue

Assay Class: High Sensitivity DNA Assay
 Data Path: C:\...ents and Settings\Bioanalyzer\2013-07-25\2013-07-25_006.xad

Created: 7/25/2013 3:11:09 PM
 Modified: 7/25/2013 4:03:59 PM

Electropherogram Summary Continued ...



Overall Results for sample 5 : sample 5

Number of peaks found: 26 Corr. Area 1: 1,330.7
 Noise: 0.2

Peak table for sample 5 : sample 5

Peak	Size [bp]	Conc. [pg/μl]	Molarity [pmol/l]	Observations
1	35	125.00	5,411.3	Lower Marker
2	48	25.60	815.0	
3	215	130.75	921.0	
4	223	42.82	290.3	
5	233	39.35	256.1	
6	241	48.38	303.9	
7	248	37.79	230.8	
8	257	34.32	202.0	
9	264	33.47	192.1	
10	276	36.17	198.4	
11	293	28.39	147.0	
12	301	29.02	146.1	
13	309	53.82	263.9	
14	331	23.57	108.0	
15	340	28.32	126.1	
16	360	34.15	143.7	
17	376	33.80	136.4	
18	390	27.04	105.0	
19	407	14.12	52.5	
20	436	11.38	39.5	
21	449	15.67	52.9	
22	473	9.40	30.1	
23	492	9.93	30.6	
24	518	6.92	20.2	
25	567	4.84	12.9	
26	580	5.25	13.7	

Assay Class: High Sensitivity DNA Assay
Data Path: C:\...ents and Settings\Bioanalyzer\2013-07-25\2013-07-25_006.xad

Created: 7/25/2013 3:11:09 PM
Modified: 7/25/2013 4:03:59 PM

Electropherogram Summary Continued ...**... Peak table for sample 5 : sample 5**

Peak	Size [bp]	Conc. [pg/μl]	Molarity [pmol/l]	Observations
27	626	5.12	12.4	
28	▶ 10,380	75.00	10.9	Upper Marker

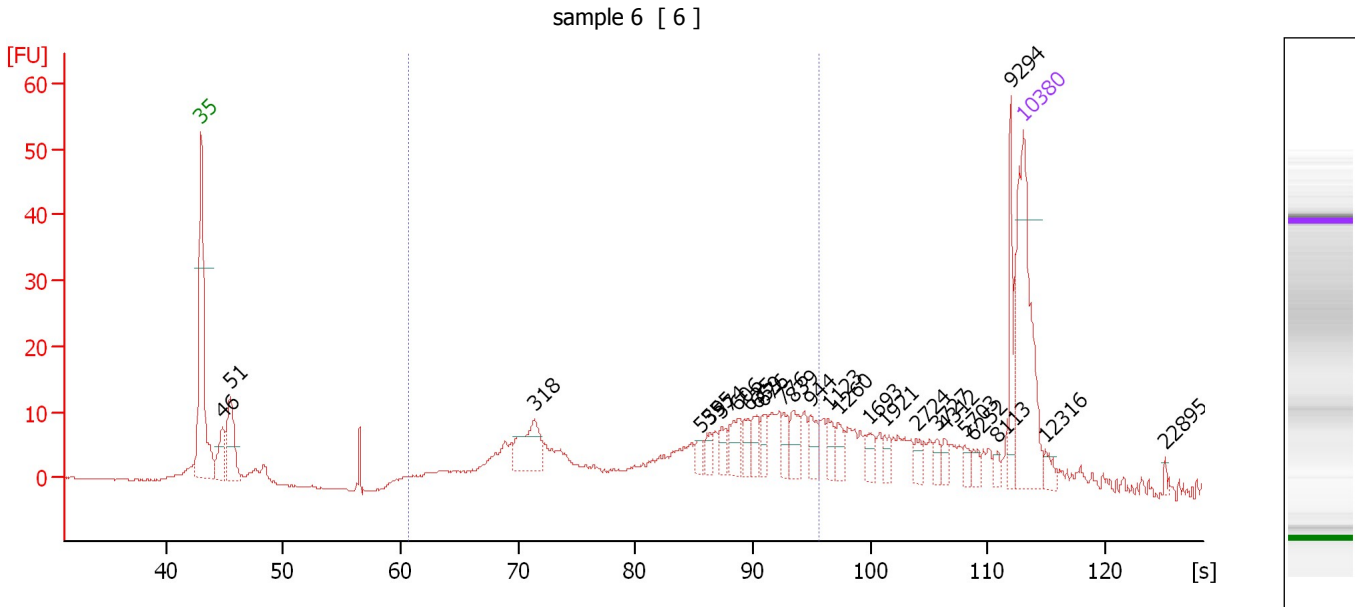
Region table for sample 5 : sample 5

From [s]	To [s]	Average Size [bp]	Molarity [pmol/l]	Conc. [pg/μl]	Corr. Area % of Total	Size distribution in CV [%]	Color	
57.25	95.70	350	5,453.4	1,067.41	1,330.7	95	38.2	■

Assay Class: High Sensitivity DNA Assay
 Data Path: C:\...ents and Settings\Bioanalyzer\2013-07-25\2013-07-25_006.xad

Created: 7/25/2013 3:11:09 PM
 Modified: 7/25/2013 4:03:59 PM

Electropherogram Summary Continued ...



Overall Results for sample 6 : sample 6

Number of peaks found: 26 Corr. Area 1: 232.8
 Noise: 0.1

Peak table for sample 6 : sample 6

Peak	Size [bp]	Conc. [pg/μl]	Molarity [pmol/l]	Observations
1	35	125.00	5,411.3	Lower Marker
2	46	25.60	835.7	
3	51	47.14	1,397.8	
4	318	35.39	168.5	
5	539	6.71	18.9	
6	555	6.89	18.8	
7	574	7.47	19.7	
8	606	14.84	37.1	
9	635	9.46	22.6	
10	659	9.96	22.9	
11	676	8.97	20.1	
12	776	9.44	18.4	
13	839	13.32	24.1	
14	944	11.19	17.9	
15	1,123	9.08	12.2	
16	1,260	8.26	9.9	
17	1,693	7.33	6.6	
18	1,921	5.77	4.6	
19	2,724	5.59	3.1	
20	3,727	4.64	1.9	
21	4,312	4.31	1.5	
22	5,703	4.33	1.2	
23	6,252	4.29	1.0	
24	8,113	3.46	0.6	
25	9,294	19.36	3.2	
26	10,380	75.00	10.9	Upper Marker


Assay Class: High Sensitivity DNA Assay
Data Path: C:\...ents and Settings\Bioanalyzer\2013-07-25\2013-07-25_006.xad

Created: 7/25/2013 3:11:09 PM
Modified: 7/25/2013 4:03:59 PM

Electropherogram Summary Continued ...**... Peak table for sample 6 : sample 6**

Peak	Size [bp]	Conc. [pg/ μ l]	Molarity [pmol/l]	Observations
27	12,316	0.00	0.0	
28	22,895	0.00	0.0	

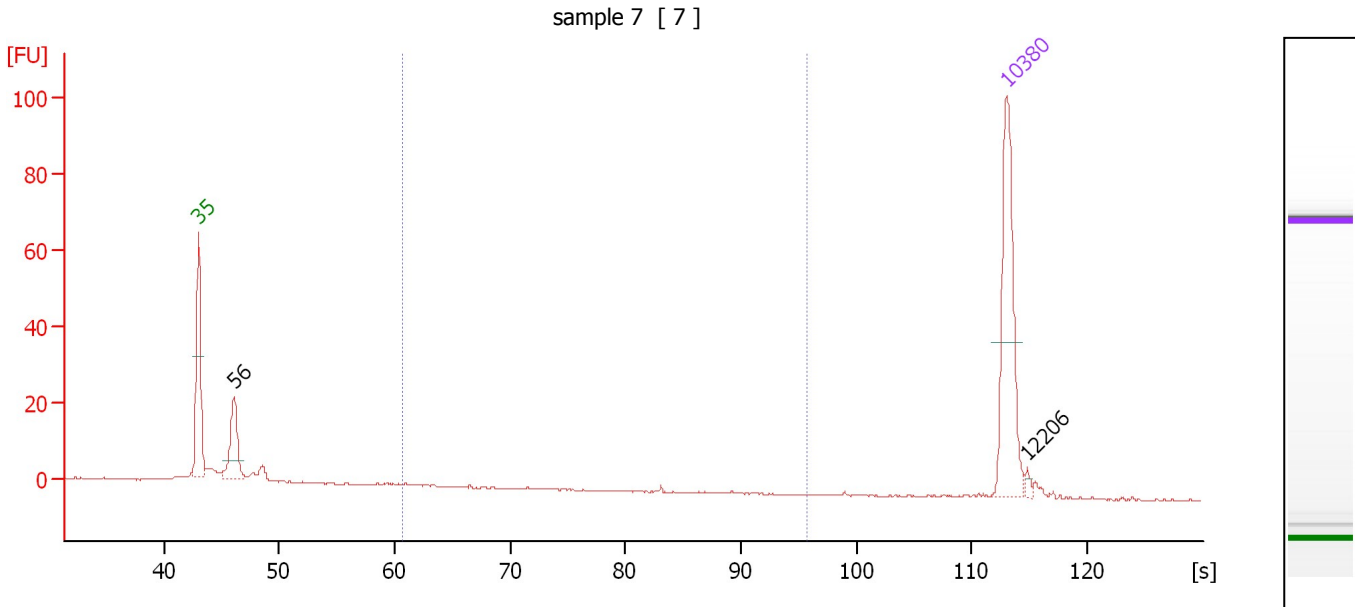
Region table for sample 6 : sample 6

From [s]	To [s]	Average Size [bp]	Molarity [pmol/l]	Conc. [pg/ μ l]	Corr. Area % of Total	Size distribution in CV [%]	Color
60.65	95.70	552	1,247.8	356.64	232.8 55	38.0	

Assay Class: High Sensitivity DNA Assay
 Data Path: C:\...ents and Settings\Bioanalyzer\2013-07-25\2013-07-25_006.xad

Created: 7/25/2013 3:11:09 PM
 Modified: 7/25/2013 4:03:59 PM

Electropherogram Summary Continued ...



Overall Results for sample 7 : sample 7

Number of peaks found: 2 Corr. Area 1: 0.4
 Noise: 0.2

Peak table for sample 7 : sample 7

Peak	Size [bp]	Conc. [pg/μl]	Molarity [pmol/l]	Observations
1	35	125.00	5,411.3	Lower Marker
2	56	50.91	1,368.5	
3	10,380	75.00	10.9	Upper Marker
4	12,206	0.00	0.0	

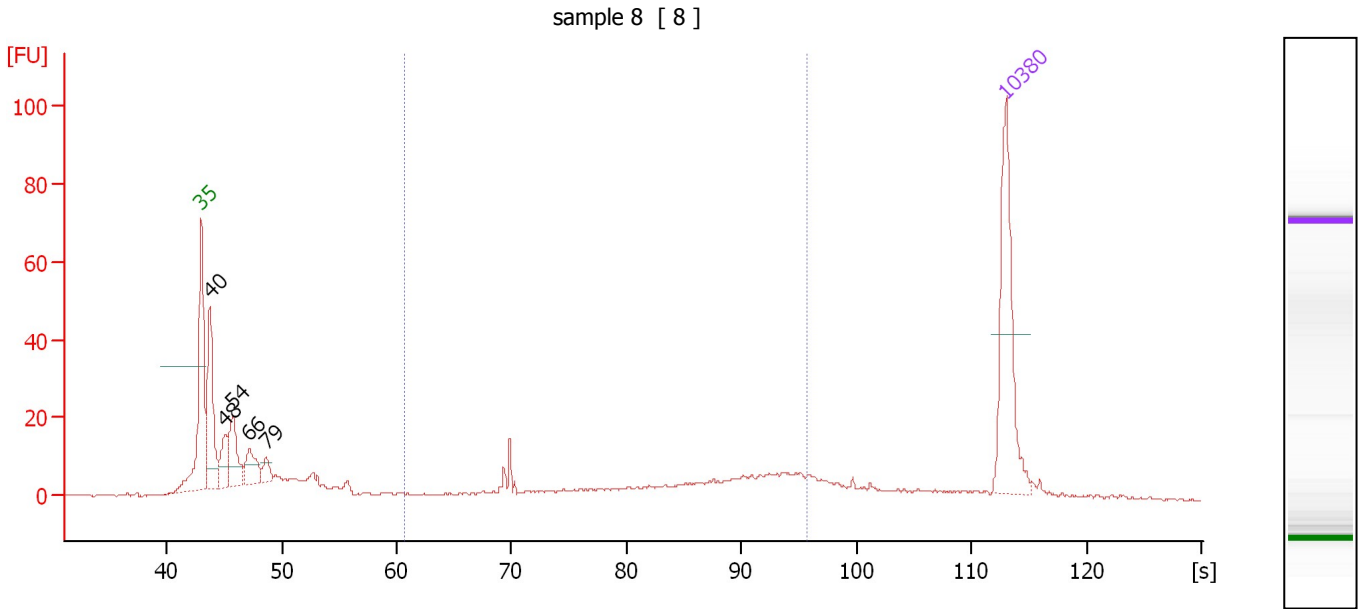
Region table for sample 7 : sample 7

From [s]	To [s]	Average Size [bp]	Molarity [pmol/l]	Conc. [pg/μl]	Corr. Area % of Total	Size distribution in CV [%]	Color	
60.65	95.70	365	2.5	0.49	0.4	1	36.0	Blue

Assay Class: High Sensitivity DNA Assay
 Data Path: C:\...ents and Settings\Bioanalyzer\2013-07-25\2013-07-25_006.xad

Created: 7/25/2013 3:11:09 PM
 Modified: 7/25/2013 4:03:59 PM

Electropherogram Summary Continued ...



Overall Results for sample 8 : sample 8

Number of peaks found: 5 Corr. Area 1: 124.7
 Noise: 0.2

Peak table for sample 8 : sample 8

Peak	Size [bp]	Conc. [pg/μl]	Molarity [pmol/l]	Observations
1	35	125.00	5,411.3	Lower Marker
2	40	99.87	3,803.8	
3	48	29.05	914.2	
4	54	50.24	1,420.0	
5	66	31.27	719.1	
6	79	13.40	257.0	
7	10,380	75.00	10.9	Upper Marker

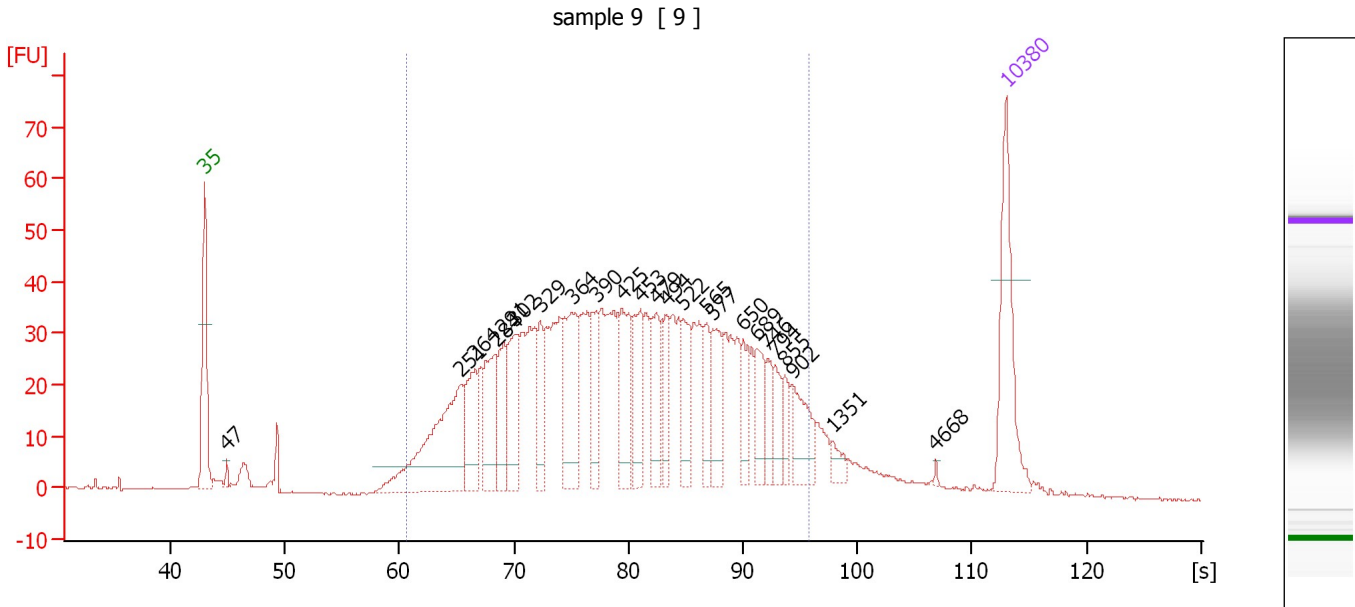
Region table for sample 8 : sample 8

From [s]	To [s]	Average Size [bp]	Molarity [pmol/l]	Conc. [pg/μl]	Corr. Area % of Total	Size distribution in CV [%]	Color
60.65	95.70	563	429.4	126.72	124.7 29	37.1	Blue

Assay Class: High Sensitivity DNA Assay
 Data Path: C:\...ents and Settings\Bioanalyzer\2013-07-25\2013-07-25_006.xad

Created: 7/25/2013 3:11:09 PM
 Modified: 7/25/2013 4:03:59 PM

Electropherogram Summary Continued ...



Overall Results for sample 9 : sample 9

Number of peaks found: 24 Corr. Area 1: 1,262.9
 Noise: 0.2

Peak table for sample 9 : sample 9


Peak	Size [bp]	Conc. [pg/μl]	Molarity [pmol/l]	Observations
1	35	125.00	5,411.3	Lower Marker
2	47	5.99	192.0	
3	251	186.62	1,125.7	
4	264	65.41	374.9	
5	284	71.40	381.0	
6	291	57.68	300.3	
7	302	66.66	334.5	
8	329	41.28	190.0	
9	364	93.82	390.9	
10	390	41.83	162.6	
11	425	70.87	252.5	
12	453	60.68	202.8	
13	479	53.18	168.2	
14	494	34.11	104.6	
15	522	41.58	120.7	
16	565	31.12	83.4	
17	577	46.53	122.2	
18	650	29.75	69.4	
19	689	35.34	77.8	
20	746	22.38	45.4	
21	794	22.89	43.7	
22	855	16.64	29.5	
23	902	42.09	70.7	
24	1,351	10.50	11.8	
25	4,668	1.44	0.5	
26	10,380	75.00	10.9	Upper Marker

Assay Class: High Sensitivity DNA Assay
Data Path: C:\...ents and Settings\Bioanalyzer\2013-07-25\2013-07-25_006.xad

Created: 7/25/2013 3:11:09 PM
Modified: 7/25/2013 4:03:59 PM

Electropherogram Summary Continued ...

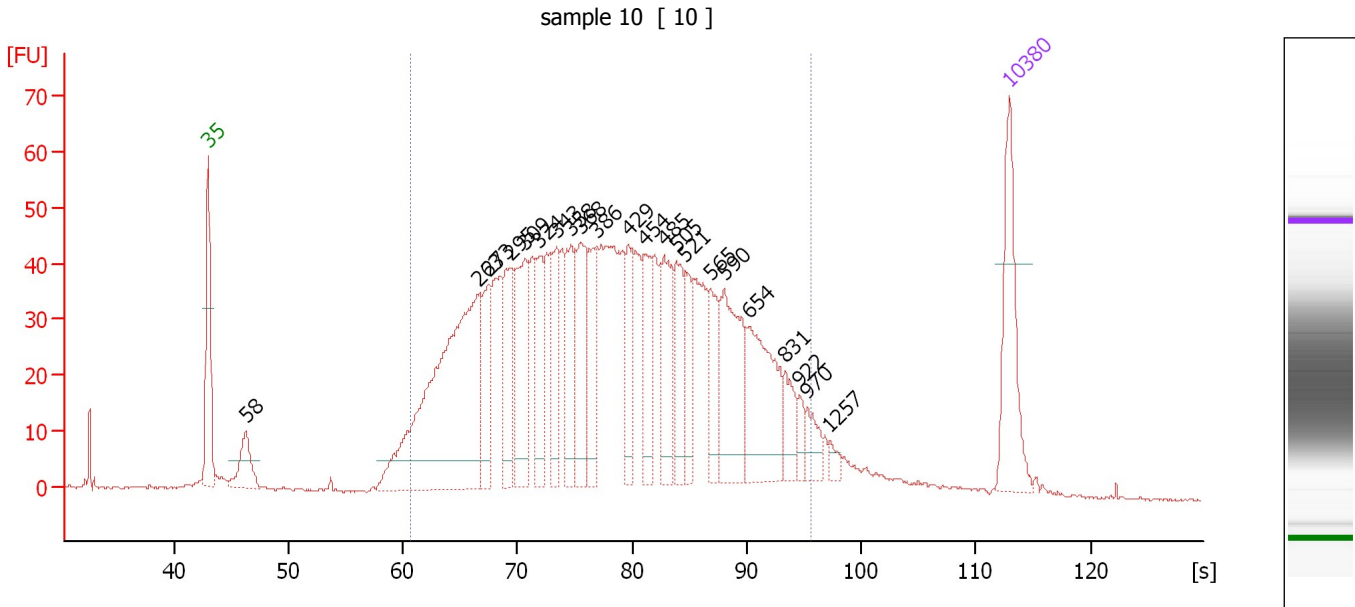
... Region table for sample 9 : sample 9

From [s]	To [s]	Average Size [bp]	Molarity [pmol/l]	Conc. [pg/μl]	Corr. Area % of Total	Size distribution in CV [%]	Color	
60.65	95.70	461	7,268.7	1,833.94	1,262.9	90	37.5	

Assay Class: High Sensitivity DNA Assay
 Data Path: C:\...ents and Settings\Bioanalyzer\2013-07-25\2013-07-25_006.xad

Created: 7/25/2013 3:11:09 PM
 Modified: 7/25/2013 4:03:59 PM

Electropherogram Summary Continued ...



Overall Results for sample 10 : sample 10

Number of peaks found: 22 Corr. Area 1: 1,591.5
 Noise: 0.2

Peak table for sample 10 : sample 10

Peak	Size [bp]	Conc. [pg/μl]	Molarity [pmol/l]	Observations
1	35	125.00	5,411.3	Lower Marker
2	58	50.06	1,303.2	
3	263	424.23	2,441.2	
4	273	69.91	388.2	
5	295	76.65	394.2	
6	309	113.74	556.9	
7	324	66.96	313.1	
8	343	61.94	273.9	
9	358	71.71	303.2	
10	368	86.80	357.1	
11	386	67.53	264.9	
12	429	46.17	162.9	
13	454	64.00	213.5	
14	485	73.30	229.1	
15	505	61.25	183.6	
16	521	40.07	116.6	
17	565	46.39	124.4	
18	590	103.02	264.5	
19	654	114.10	264.2	
20	831	30.13	54.9	
21	922	12.23	20.1	
22	970	20.44	31.9	
23	1,257	7.76	9.4	
24	10,380	75.00	10.9	Upper Marker

Assay Class: High Sensitivity DNA Assay
Data Path: C:\...ents and Settings\Bioanalyzer\2013-07-25\2013-07-25_006.xad

Created: 7/25/2013 3:11:09 PM
Modified: 7/25/2013 4:03:59 PM

Electropherogram Summary Continued ...

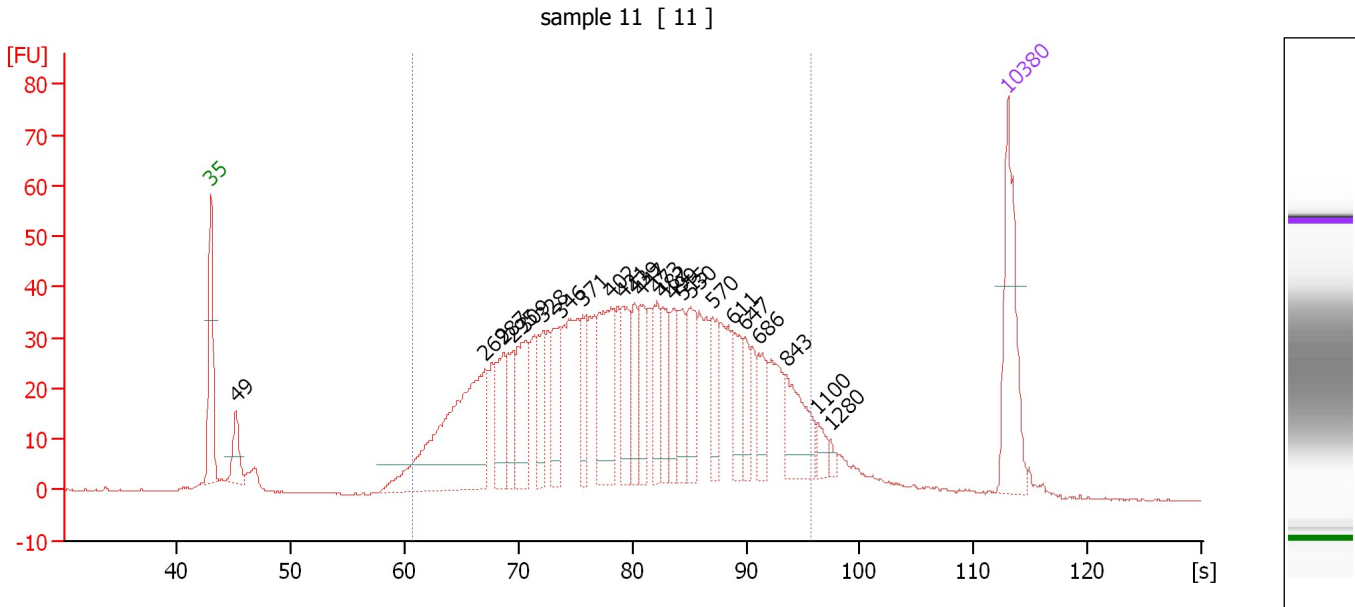
... Region table for sample 10 : sample 10

From [s]	To [s]	Average Size [bp]	Molarity [pmol/l]	Conc. [pg/ μ l]	Corr. Area % of Total	Size distribution in CV [%]	Color	
60.65	95.70	435	9,880.0	2,363.07	1,591.5	91	37.5	

Assay Class: High Sensitivity DNA Assay
 Data Path: C:\...ents and Settings\Bioanalyzer\2013-07-25\2013-07-25_006.xad

Created: 7/25/2013 3:11:09 PM
 Modified: 7/25/2013 4:03:59 PM

Electropherogram Summary Continued ...



Overall Results for sample 11 : sample 11

Number of peaks found: 24 Corr. Area 1: 1,291.0
 Noise: 0.2

Peak table for sample 11 : sample 11

Peak	Size [bp]	Conc. [pg/μl]	Molarity [pmol/l]	Observations
1	35	125.00	5,411.3	Lower Marker
2	49	39.27	1,217.3	
3	269	246.77	1,387.9	
4	287	53.03	280.3	
5	295	40.62	208.4	
6	309	71.84	352.7	
7	328	45.23	209.0	
8	346	55.86	244.5	
9	371	36.39	148.5	
10	402	89.32	336.2	
11	421	51.39	185.0	
12	439	34.91	120.4	
13	447	42.68	144.5	
14	473	44.52	142.5	
15	482	40.71	127.9	
16	499	35.01	106.3	
17	515	38.92	114.4	
18	530	49.83	142.5	
19	570	35.65	94.8	
20	611	34.58	85.8	
21	647	22.59	52.9	
22	686	28.22	62.3	
23	843	53.90	96.9	
24	1,100	10.75	14.8	
25	1,280	4.51	5.3	
26	10,380	75.00	10.9	Upper Marker

Assay Class: High Sensitivity DNA Assay
Data Path: C:\...ents and Settings\Bioanalyzer\2013-07-25\2013-07-25_006.xad

Created: 7/25/2013 3:11:09 PM
Modified: 7/25/2013 4:03:59 PM

Electropherogram Summary Continued ...

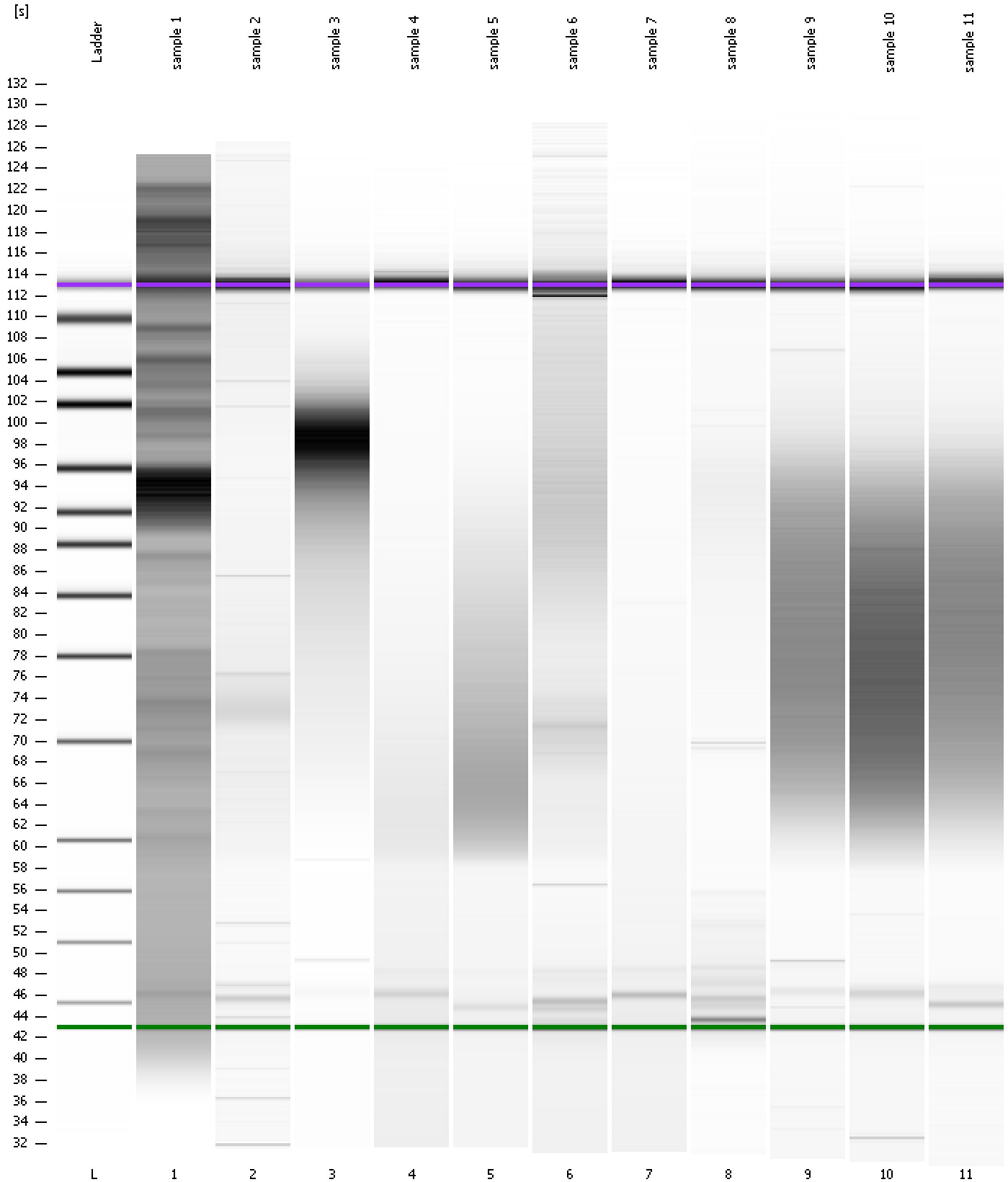
... Region table for sample 11 : sample 11

From [s]	To [s]	Average Size [bp]	Molarity [pmol/l]	Conc. [pg/μl]	Corr. Area % of Total	Size distribution in CV [%]	Color
60.65	95.70	462	6,889.4	1,743.58	1,291.0 90	37.0	

Assay Class: High Sensitivity DNA Assay
Data Path: C:\...ents and Settings\Bioanalyzer\2013-07-25\2013-07-25_006.xad

Created: 7/25/2013 3:11:09 PM
Modified: 7/25/2013 4:03:59 PM

Gel Image



Assay Class: High Sensitivity DNA Assay Created: 7/25/2013 3:11:09 PM
 Data Path: C:\...ents and Settings\Bioanalyzer\2013-07-25\2013-07-25_006.xad Modified: 7/25/2013 4:03:59 PM

Run Logbook

Description	Number	Source	Category	Sub Category	Time	Time Zone	User	Host
Run ended on port 1 (Number of wells acquired: 12)		Instrument	Run		7/25/2013 3:52:25 PM	(GMT --07:00) Pacific Standard Time	UC Davis	D8XSMGH1
Run started on port 1 (File: C:\Documents and Settings\Bioanalyzer\2013-07-25\2013-07-25_006.xad)		Instrument	Run		7/25/2013 3:11:14 PM	(GMT --07:00) Pacific Standard Time	UC Davis	D8XSMGH1
Product Number : G2938B		Instrument	Run		7/25/2013 3:11:14 PM	(GMT --07:00) Pacific Standard Time	UC Davis	D8XSMGH1
Name :		Instrument	Run		7/25/2013 3:11:14 PM	(GMT --07:00) Pacific Standard Time	UC Davis	D8XSMGH1
Vendor : Agilent Technologies		Instrument	Run		7/25/2013 3:11:14 PM	(GMT --07:00) Pacific Standard Time	UC Davis	D8XSMGH1
Serial# : DE13701086		Instrument	Run		7/25/2013 3:11:14 PM	(GMT --07:00) Pacific Standard Time	UC Davis	D8XSMGH1
Firmware : C.01.069		Instrument	Run		7/25/2013 3:11:14 PM	(GMT --07:00) Pacific Standard Time	UC Davis	D8XSMGH1
Cartridge : Electrode		Instrument	Run		7/25/2013 3:11:14 PM	(GMT --07:00) Pacific Standard Time	UC Davis	D8XSMGH1