

Assay Class: High Sensitivity DNA Assay
Data Path: C:\...ents and Settings\Bioanalyzer\2013-07-26\2013-07-26_001.xad

Created: 7/26/2013 12:13:42 PM
Modified: 7/26/2013 12:52:13 PM

Electrophoresis File Run Summary

Instrument Information:

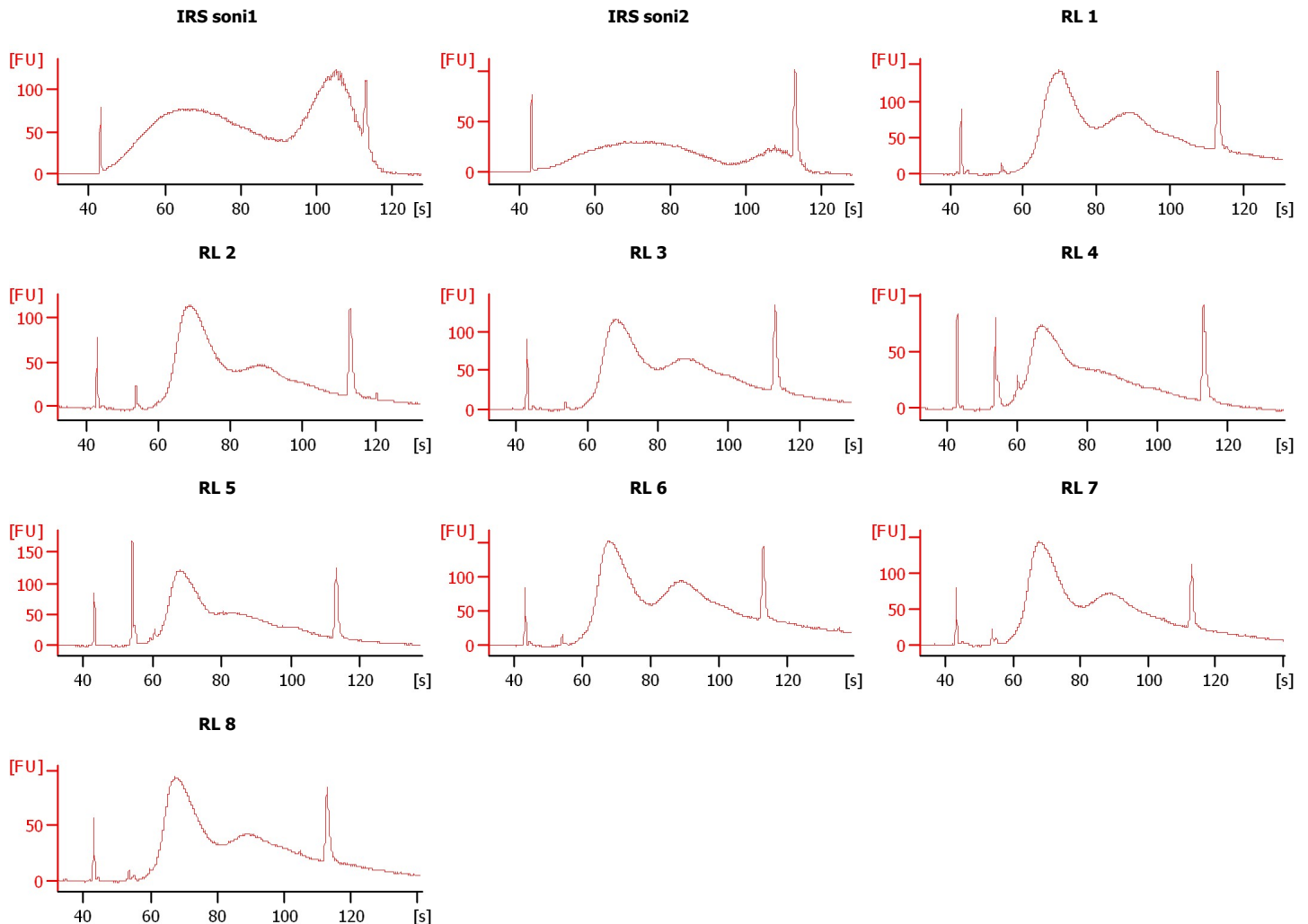
Instrument Name: DE13701086 Firmware: C.01.069
Serial#: DE13701086 Type: G2938B

Assay Information:

Assay Origin Path: C:\Program Files\Agilent\2100 bioanalyzer\2100 expert\assays\dsDNA\High Sensitivity DNA.xsy
Assay Class: High Sensitivity DNA Assay
Version: 1.03
Assay Comments: Copyright © 2003-2010 Agilent Technologies

Chip Information:

Chip Lot #:
Reagent Kit Lot #:
Chip Comments:



Assay Class: High Sensitivity DNA Assay
Data Path: C:\...ents and Settings\Bioanalyzer\2013-07-26\2013-07-26_001.xad

Created: 7/26/2013 12:13:42 PM
Modified: 7/26/2013 12:52:13 PM

Electrophoresis File Run Summary (Chip Summary)

Sample Name	Sample Comment	Rest. Digest	Status	Observation	Result Label	Result Color
IRS soni1		<input type="checkbox"/>	✓			
IRS soni2		<input type="checkbox"/>	✓			
RL 1		<input type="checkbox"/>	✓			
RL 2		<input type="checkbox"/>	✓			
RL 3		<input type="checkbox"/>	✓			
RL 4		<input type="checkbox"/>	✓			
RL 5		<input type="checkbox"/>	✓			
RL 6		<input type="checkbox"/>	✓			
RL 7		<input type="checkbox"/>	✓			
RL 8		<input type="checkbox"/>	✓			
sample 11		<input type="checkbox"/>	✓			
Ladder		<input type="checkbox"/>	✓			

Chip Lot # **Reagent Kit Lot #**

Chip Comments :

Assay Class: High Sensitivity DNA Assay
Data Path: C:\...ents and Settings\Bioanalyzer\2013-07-26\2013-07-26_001.xad

Created: 7/26/2013 12:13:42 PM
Modified: 7/26/2013 12:52:13 PM

Electrophoresis Assay Details

General Analysis Settings

Number of Available Sample and Ladder Wells (Max.) : 12
Minimum Visible Range [s] : 32
Maximum Visible Range [s] : 138
Start Analysis Time Range [s] : 33
End Analysis Time Range [s] : 137.5
Ladder Concentration [pg/μl] : 1950
Uses Standard Area for Ladder Fragments
Lower Marker Concentration [pg/μl] : 125
Upper Marker Concentration [pg/μl] : 75
Used Upper Marker for Quantitation
Standard Curve Fit is Point to Point
Show Data Aligned to Lower and Upper Marker

Integrator Settings

Integration Start Time [s] : 33.05
Integration End Time [s] : 137
Slope Threshold : 0.8
Height Threshold [FU] : 5
Area Threshold : 0.1
Width Threshold [s] : 0.6
Baseline Plateau [s] : 0.5

Filter Settings

Filter Width [s] : 0.5
Polynomial Order : 4

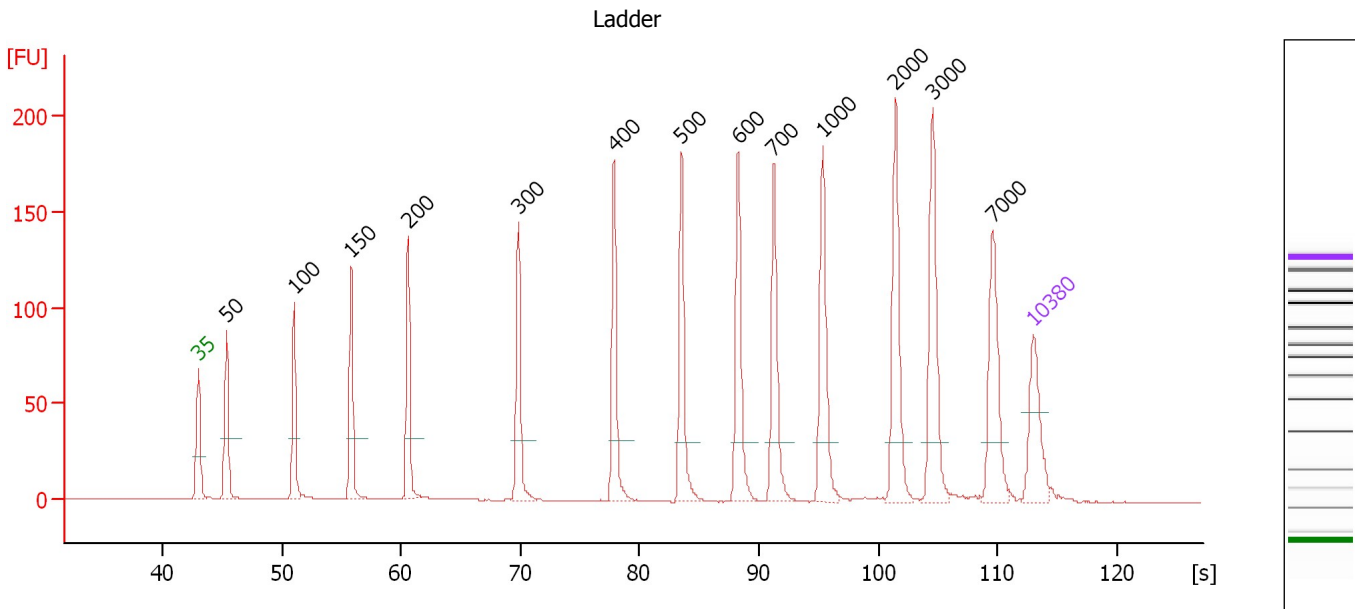
Ladder

Ladder Peak	Size	Area
1	35	160
2	50	210
3	100	208
4	150	221
5	200	242
6	300	270
7	400	305
8	500	306
9	600	336
10	700	321
11	1000	366
12	2000	413
13	3000	411
14	7000	400
15	10380	214

Assay Class: High Sensitivity DNA Assay
 Data Path: C:\...ents and Settings\Bioanalyzer\2013-07-26\2013-07-26_001.xad

Created: 7/26/2013 12:13:42 PM
 Modified: 7/26/2013 12:52:13 PM

Electropherogram Summary



Overall Results for Ladder

Noise: 0.1

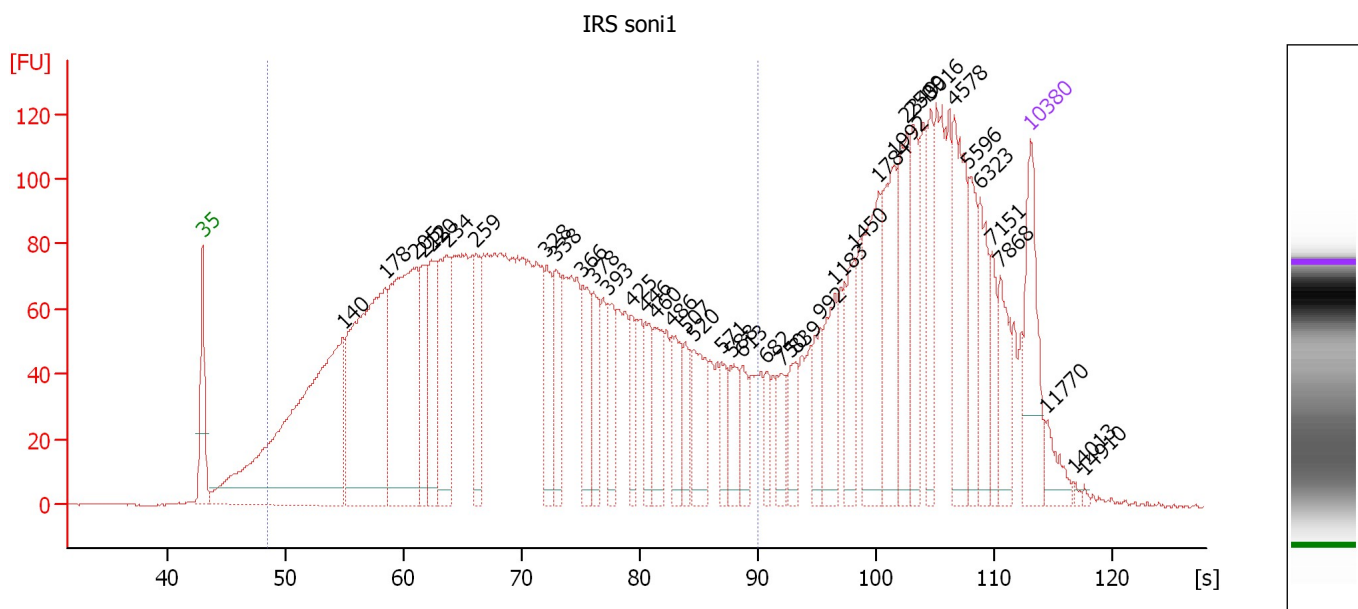
Peak table for Ladder

Peak	Size [bp]	Conc. [pg/μl]	Molarity [pmol/l]	Observations
1	35	125.00	5,411.3	Lower Marker
2	50	150.00	4,545.5	Ladder Peak
3	100	150.00	2,272.7	Ladder Peak
4	150	150.00	1,515.2	Ladder Peak
5	200	150.00	1,136.4	Ladder Peak
6	300	150.00	757.6	Ladder Peak
7	400	150.00	568.2	Ladder Peak
8	500	150.00	454.5	Ladder Peak
9	600	150.00	378.8	Ladder Peak
10	700	150.00	324.7	Ladder Peak
11	1,000	150.00	227.3	Ladder Peak
12	2,000	150.00	113.6	Ladder Peak
13	3,000	150.00	75.8	Ladder Peak
14	7,000	150.00	32.5	Ladder Peak
15	10,380	75.00	10.9	Upper Marker

Assay Class: High Sensitivity DNA Assay
 Data Path: C:\...ents and Settings\Bioanalyzer\2013-07-26\2013-07-26_001.xad

Created: 7/26/2013 12:13:42 PM
 Modified: 7/26/2013 12:52:13 PM

Electropherogram Summary Continued ...



Overall Results for sample 1 : IRS soni1

Number of peaks found: 40 Corr. Area 1: 3,736.9
 Noise: 0.2

Peak table for sample 1 : IRS soni1

Peak	Size [bp]	Conc. [pg/ μ l]	Molarity [pmol/l]	Observations
1	35	125.00	5,411.3	Lower Marker
2	140	641.25	6,930.6	
3	178	441.29	3,761.2	
4	205	350.19	2,588.0	
5	212	85.41	610.8	
6	220	103.14	711.3	
7	234	148.16	959.7	
8	259	84.01	490.8	
9	328	71.36	329.9	
10	338	60.46	271.1	
11	366	67.64	280.3	
12	378	63.68	255.5	
13	393	52.18	201.2	
14	425	41.50	148.1	
15	446	44.87	152.6	
16	460	59.44	195.8	
17	486	52.45	163.6	
18	507	30.56	91.3	
19	520	62.92	183.2	
20	571	28.21	74.9	
21	588	37.76	97.3	
22	613	30.89	76.4	
23	682	22.09	49.1	
24	750	26.32	53.2	
25	839	36.58	66.0	
26	992	39.20	59.8	

Assay Class: High Sensitivity DNA Assay
 Data Path: C:\...ents and Settings\Bioanalyzer\2013-07-26\2013-07-26_001.xad


Created: 7/26/2013 12:13:42 PM
 Modified: 7/26/2013 12:52:13 PM

Electropherogram Summary Continued ...

... Peak table for sample 1 : IRS soni1

Peak	Size [bp]	Conc. [pg/μl]	Molarity [pmol/l]	Observations
27	1,183	55.22	70.7	
28	1,450	44.84	46.8	
29	1,784	103.17	87.6	
30	1,992	89.17	67.8	
31	2,349	70.82	45.7	
32	2,509	59.88	36.2	
33	3,016	44.28	22.2	
34	4,578	96.76	32.0	
35	5,596	49.78	13.5	
36	6,323	51.24	12.3	
37	7,151	32.60	6.9	
38	7,868	42.49	8.2	
39	10,380	75.00	10.9	Upper Marker
40	11,770	0.00	0.0	
41	14,013	0.00	0.0	
42	14,910	0.00	0.0	

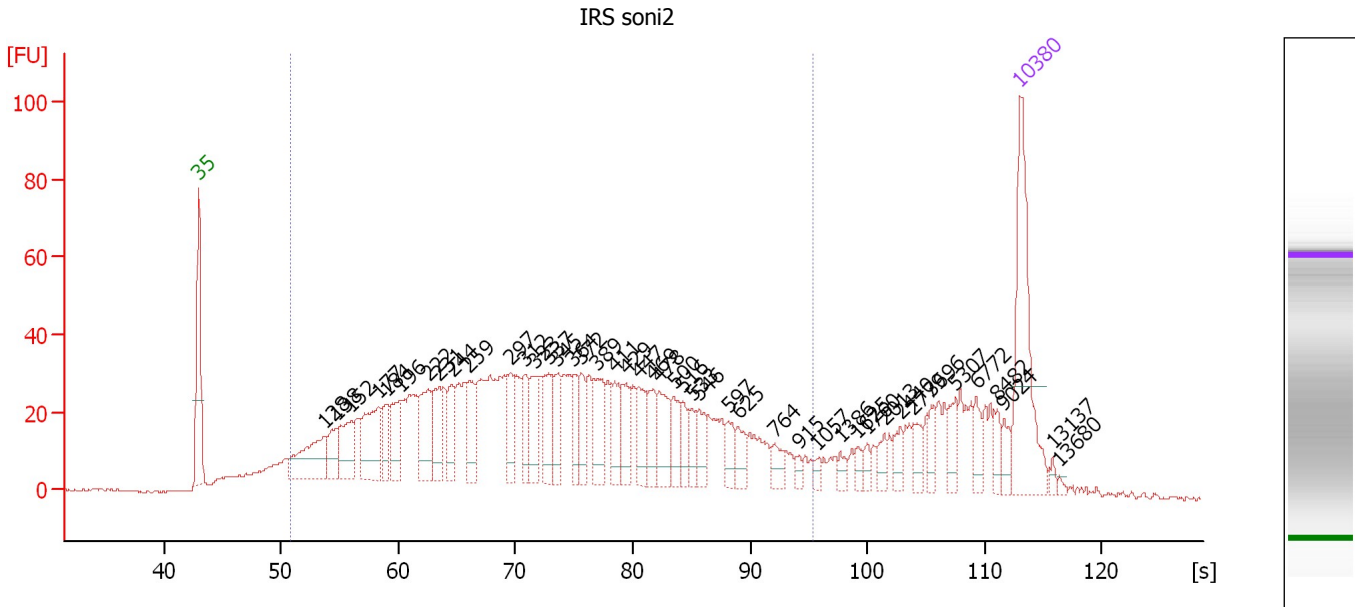
Region table for sample 1 : IRS soni1

From [s]	To [s]	Average Size [bp]	Molarity [pmol/l]	Conc. [pg/μl]	Corr. Area % of Total	Size distribution in CV [%]	Color
48.47	90.02	311	26,308.8	3,809.21	3,736.9 66	44.1	

Assay Class: High Sensitivity DNA Assay
 Data Path: C:\...ents and Settings\Bioanalyzer\2013-07-26\2013-07-26_001.xad

Created: 7/26/2013 12:13:42 PM
 Modified: 7/26/2013 12:52:13 PM

Electropherogram Summary Continued ...



Overall Results for sample 2 : IRS soni2

Number of peaks found: 45 Corr. Area 1: 1,480.5
 Noise: 0.3

Peak table for sample 2 : IRS soni2

Peak	Size [bp]	Conc. [pg/μl]	Molarity [pmol/l]	Observations
1	35	125.00	5,411.3	Lower Marker
2	128	61.97	735.1	
3	138	25.79	282.6	
4	152	43.11	429.2	
5	177	60.52	519.1	
6	184	25.17	207.5	
7	196	37.85	292.1	
8	222	44.15	301.6	
9	231	34.96	229.1	
10	244	30.94	192.5	
11	259	33.30	194.6	
12	297	25.10	128.1	
13	312	23.88	115.8	
14	323	32.21	151.0	
15	337	33.35	149.7	
16	345	26.11	114.7	
17	364	21.60	90.0	
18	372	21.08	85.9	
19	389	33.23	129.5	
20	411	22.55	83.2	
21	429	22.07	78.0	
22	447	24.90	84.5	
23	469	21.55	69.7	
24	478	28.85	91.4	
25	500	21.36	64.7	
26	516	13.47	39.6	

Assay Class: High Sensitivity DNA Assay
 Data Path: C:\...ents and Settings\Bioanalyzer\2013-07-26\2013-07-26_001.xad

Created: 7/26/2013 12:13:42 PM
 Modified: 7/26/2013 12:52:13 PM

Electropherogram Summary Continued ...

... Peak table for sample 2 : IRS soni2

Peak	Size [bp]	Conc. [pg/μl]	Molarity [pmol/l]	Observations
27	533	12.42	35.3	
28	546	18.12	50.3	
29	597	12.87	32.6	
30	625	14.20	34.4	
31	764	10.30	20.4	
32	915	4.49	7.4	
33	1,057	3.99	5.7	
34	1,386	4.99	5.5	
35	1,625	5.32	5.0	
36	1,760	5.03	4.3	
37	2,013	7.95	6.0	
38	2,440	8.78	5.5	
39	2,779	10.37	5.7	
40	3,696	8.89	3.6	
41	5,307	11.59	3.3	
42	6,772	11.12	2.5	
43	8,482	7.35	1.3	
44	9,024	8.30	1.4	
45	10,380	75.00	10.9	Upper Marker
46	13,137	0.00	0.0	
47	13,680	0.00	0.0	

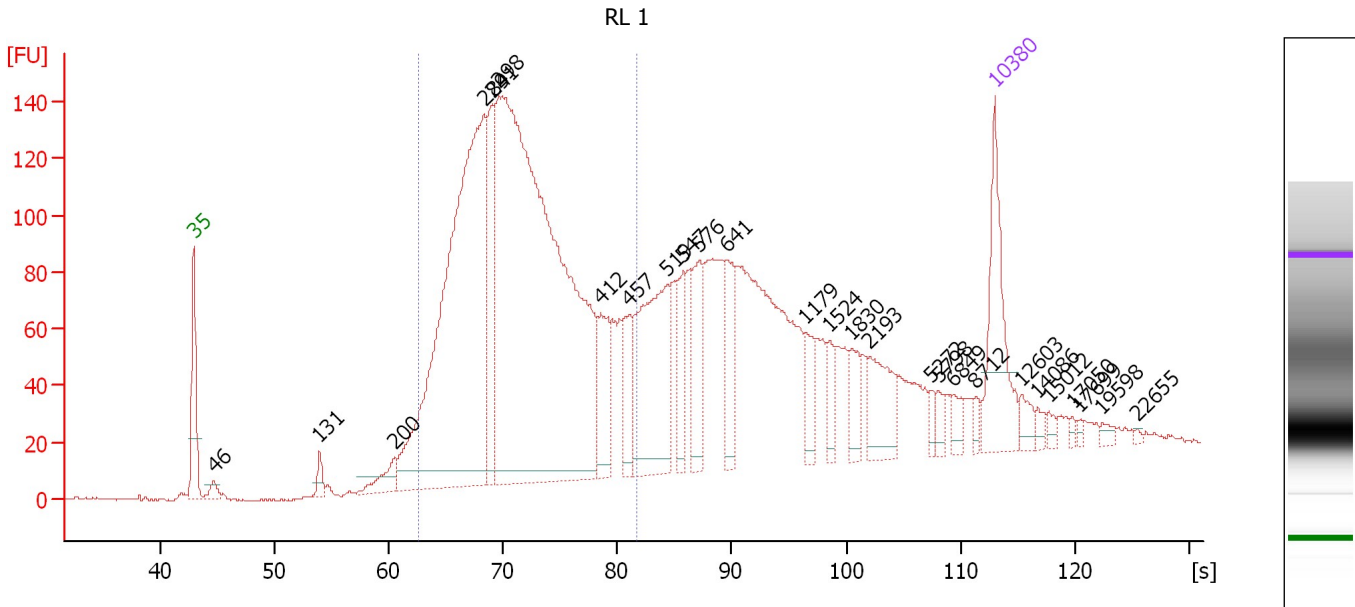
Region table for sample 2 : IRS soni2

From [s]	To [s]	Average Size [bp]	Molarity [pmol/l]	Conc. [pg/μl]	Corr. Area % of Total	Size distribution in CV [%]	Color
50.78	95.34	364	8,941.5	1,509.22	1,480.5	79	47.5

Assay Class: High Sensitivity DNA Assay
 Data Path: C:\...ents and Settings\Bioanalyzer\2013-07-26\2013-07-26_001.xad

Created: 7/26/2013 12:13:42 PM
 Modified: 7/26/2013 12:52:13 PM

Electropherogram Summary Continued ...



Overall Results for sample 3 : RL 1

Number of peaks found: 27 Corr. Area 1: 2,300.7
 Noise: 0.4

Peak table for sample 3 : RL 1

Peak	Size [bp]	Conc. [pg/μl]	Molarity [pmol/l]	Observations
1	35	125.00	5,411.3	Lower Marker
2	46	13.19	433.5	
3	131	14.09	163.0	
4	200	28.18	213.7	
5	284	656.89	3,508.1	
6	291	119.86	623.5	
7	298	1,018.31	5,179.8	
8	412	63.76	234.3	
9	457	42.59	141.3	
10	519	168.01	490.9	
11	547	39.44	109.3	
12	576	58.29	153.5	
13	641	46.24	109.3	
14	1,179	26.19	33.7	
15	1,524	19.37	19.3	
16	1,830	22.79	18.9	
17	2,193	44.12	30.5	
18	5,272	7.17	2.1	
19	5,798	8.99	2.3	
20	6,849	10.24	2.3	
21	8,712	5.70	1.0	
22	10,380	75.00	10.9	Upper Marker
23	12,603	0.00	0.0	
24	14,086	0.00	0.0	
25	15,012	0.00	0.0	
26	17,050	0.00	0.0	


Assay Class: High Sensitivity DNA Assay
Data Path: C:\...ents and Settings\Bioanalyzer\2013-07-26\2013-07-26_001.xad

Created: 7/26/2013 12:13:42 PM
Modified: 7/26/2013 12:52:13 PM

Electropherogram Summary Continued ...**... Peak table for sample 3 : RL 1**

Peak	Size [bp]	Conc. [pg/μl]	Molarity [pmol/l]	Observations
27	17,699	0.00	0.0	
28	19,598	0.00	0.0	
29	22,655	0.00	0.0	

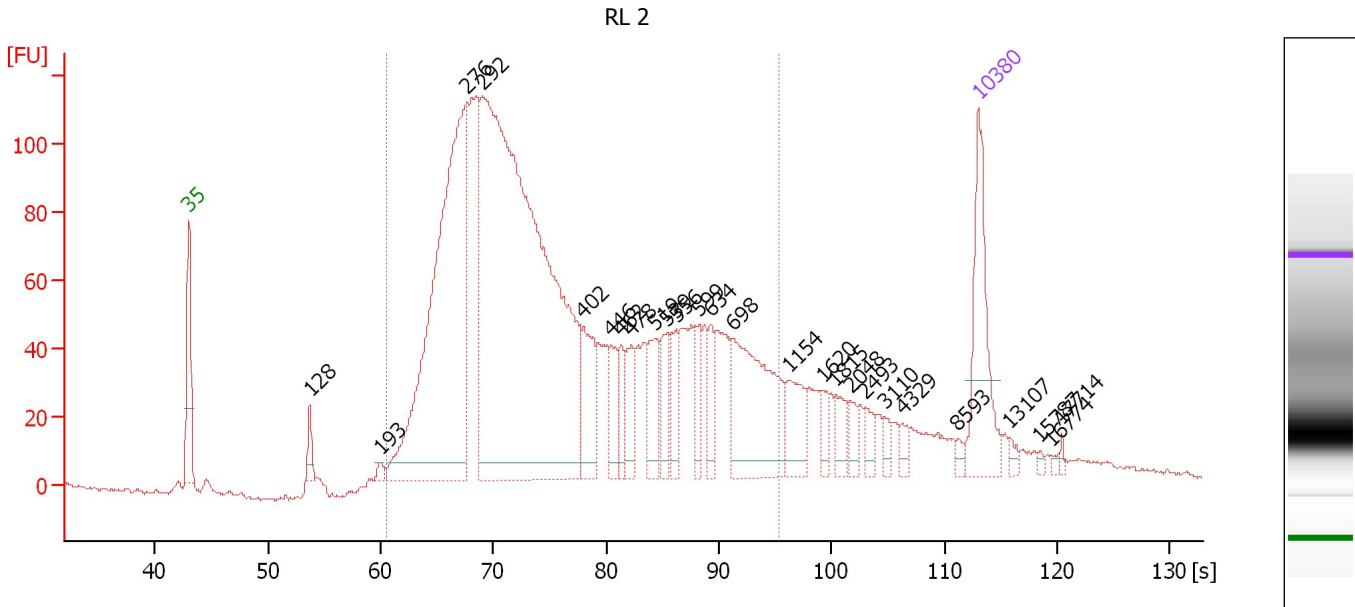
Region table for sample 3 : RL 1

From [s]	To [s]	Average Size [bp]	Molarity [pmol/l]	Conc. [pg/μl]	Corr. Area % of Total	Size distribution in CV [%]	Color	
62.67	81.72	324	8,803.9	1,806.16	2,300.7	58	18.2	

Assay Class: High Sensitivity DNA Assay
 Data Path: C:\...ents and Settings\Bioanalyzer\2013-07-26\2013-07-26_001.xad

Created: 7/26/2013 12:13:42 PM
 Modified: 7/26/2013 12:52:13 PM

Electropherogram Summary Continued ...



Overall Results for sample 4 : RL 2

Number of peaks found: 26 Corr. Area 1: 2,618.2
 Noise: 0.6

Peak table for sample 4 : RL 2

Peak	Size [bp]	Conc. [pg/μl]	Molarity [pmol/l]	Observations
1	35	125.00	5,411.3	Lower Marker
2	128	19.79	233.8	
3	193	6.50	51.0	
4	276	525.99	2,887.6	
5	292	990.73	5,142.5	
6	402	60.68	229.0	
7	446	34.32	116.5	
8	462	24.41	80.1	
9	478	31.60	100.2	
10	519	41.34	120.8	
11	539	28.22	79.2	
12	556	28.25	76.9	
13	599	25.74	65.1	
14	634	23.62	56.4	
15	698	142.04	308.2	
16	1,154	35.45	46.5	
17	1,620	11.67	10.9	
18	1,815	16.73	14.0	
19	2,048	10.70	7.9	
20	2,493	11.04	6.7	
21	3,110	7.60	3.7	
22	4,329	7.52	2.6	
23	8,593	4.38	0.8	
24	10,380	75.00	10.9	Upper Marker
25	13,107	0.00	0.0	
26	15,787	0.00	0.0	

Assay Class: High Sensitivity DNA Assay
Data Path: C:\...ents and Settings\Bioanalyzer\2013-07-26\2013-07-26_001.xad

Created: 7/26/2013 12:13:42 PM
Modified: 7/26/2013 12:52:13 PM

Electropherogram Summary Continued ...**... Peak table for sample 4 : RL 2**

Peak	Size [bp]	Conc. [pg/ μ l]	Molarity [pmol/l]	Observations
27	16,774	0.00	0.0	
28	17,714	0.00	0.0	

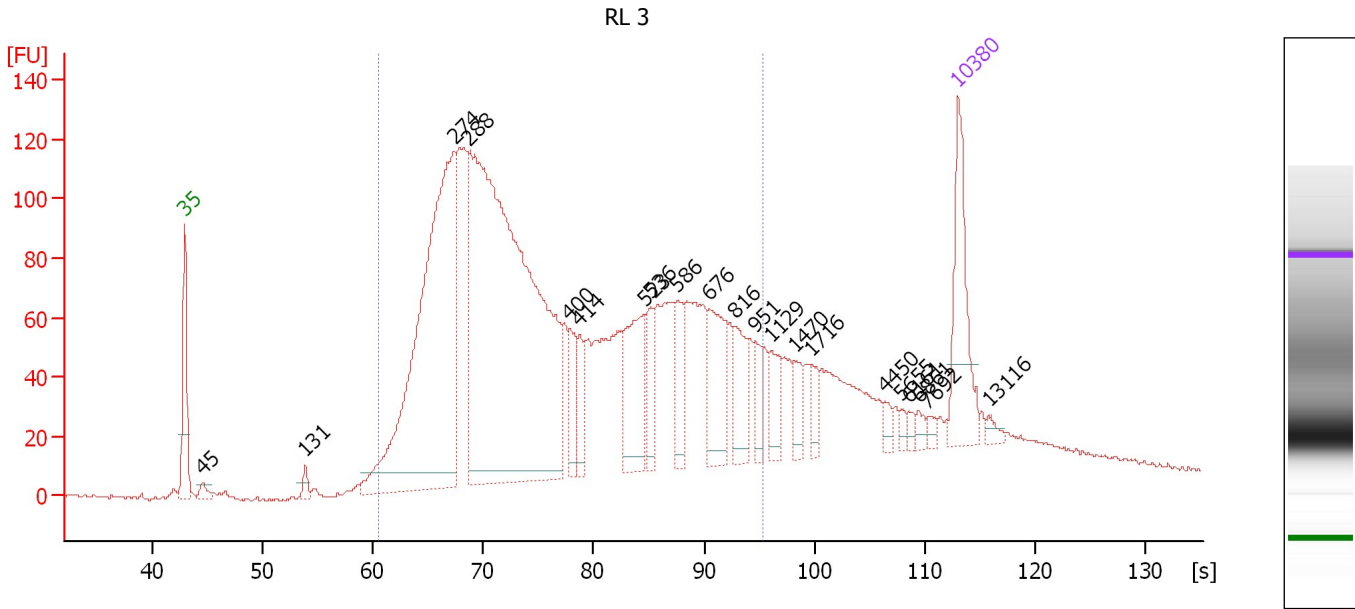
Region table for sample 4 : RL 2

From [s]	To [s]	Average Size [bp]	Molarity [pmol/l]	Conc. [pg/ μ l]	Corr. Area % of Total	Size distribution in CV [%]	Color	
60.57	95.34	412	10,240.6	2,309.93	2,618.2	86	41.6	

Assay Class: High Sensitivity DNA Assay
 Data Path: C:\...ents and Settings\Bioanalyzer\2013-07-26\2013-07-26_001.xad

Created: 7/26/2013 12:13:42 PM
 Modified: 7/26/2013 12:52:13 PM

Electropherogram Summary Continued ...



Overall Results for sample 5 : RL 3

Number of peaks found: 21 Corr. Area 1: 2,958.1
 Noise: 0.6

Peak table for sample 5 : RL 3

Peak	Size [bp]	Conc. [pg/μl]	Molarity [pmol/l]	Observations
1	35	125.00	5,411.3	Lower Marker
2	45	12.09	404.6	
3	131	11.37	132.0	
4	274	573.33	3,174.3	
5	288	915.95	4,813.3	
6	400	38.43	145.6	
7	414	29.71	108.6	
8	523	91.66	265.4	
9	536	35.46	100.3	
10	586	38.31	99.0	
11	676	72.71	162.9	
12	816	44.54	82.7	
13	951	20.61	32.8	
14	1,129	28.35	38.0	
15	1,470	18.99	19.6	
16	1,716	13.51	11.9	
17	4,450	7.40	2.5	
18	5,655	4.71	1.3	
19	6,161	4.78	1.2	
20	6,861	6.28	1.4	
21	7,692	5.22	1.0	
22	10,380	75.00	10.9	Upper Marker
23	13,116	0.00	0.0	

Assay Class: High Sensitivity DNA Assay
Data Path: C:\...ents and Settings\Bioanalyzer\2013-07-26\2013-07-26_001.xad

Created: 7/26/2013 12:13:42 PM
Modified: 7/26/2013 12:52:13 PM

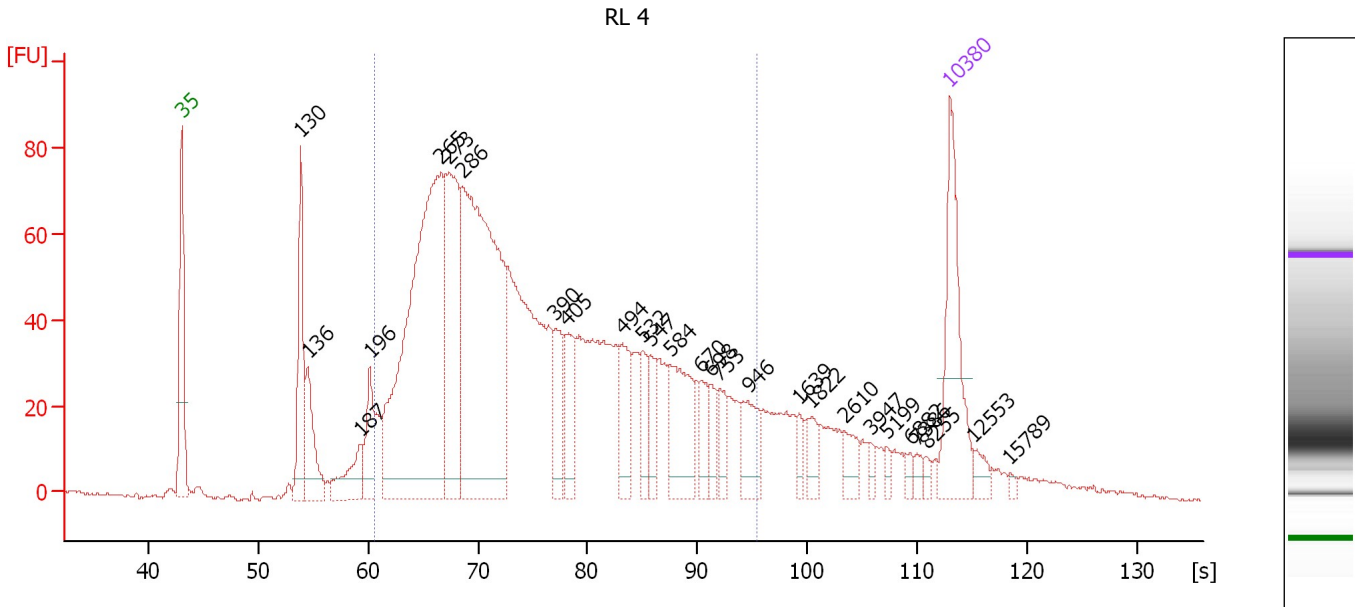
Electropherogram Summary Continued ...**... Region table for sample 5 : RL3**

From [s]	To [s]	Average Size [bp]	Molarity [pmol/l]	Conc. [pg/μl]	Corr. Area % of Total	Size distribution in CV [%]	Co lor
60.57	95.34	430	10,607.1	2,446.77	2,958.1	82	42.3

Assay Class: High Sensitivity DNA Assay
 Data Path: C:\...ents and Settings\Bioanalyzer\2013-07-26\2013-07-26_001.xad

Created: 7/26/2013 12:13:42 PM
 Modified: 7/26/2013 12:52:13 PM

Electropherogram Summary Continued ...



Overall Results for sample 6 : RL 4

Number of peaks found: 27 Corr. Area 1: 1,919.6
 Noise: 0.4

Peak table for sample 6 : RL 4

Peak	Size [bp]	Conc. [pg/μl]	Molarity [pmol/l]	Observations
1	35	125.00	5,411.3	Lower Marker
2	130	101.30	1,182.8	
3	136	63.71	707.6	
4	187	43.29	350.6	
5	196	43.71	338.2	
6	265	458.80	2,620.2	
7	273	167.27	927.6	
8	286	409.28	2,169.3	
9	390	43.71	169.9	
10	405	47.95	179.2	
11	494	41.50	127.3	
12	532	25.79	73.5	
13	547	22.85	63.3	
14	584	68.07	176.6	
15	670	21.28	48.1	
16	698	16.90	36.7	
17	753	20.13	40.5	
18	946	31.64	50.7	
19	1,639	8.60	8.0	
20	1,822	14.20	11.8	
21	2,610	13.98	8.1	
22	3,947	5.58	2.1	
23	5,199	4.69	1.4	
24	6,882	5.44	1.2	
25	7,386	5.47	1.1	
26	8,255	3.96	0.7	

Assay Class: High Sensitivity DNA Assay
Data Path: C:\...ents and Settings\Bioanalyzer\2013-07-26\2013-07-26_001.xad

Created: 7/26/2013 12:13:42 PM
Modified: 7/26/2013 12:52:13 PM

Electropherogram Summary Continued ...**... Peak table for sample 6 : RL 4**

Peak	Size [bp]	Conc. [pg/μl]	Molarity [pmol/l]	Observations
27	10,380	75.00	10.9	Upper Marker
28	12,553	0.00	0.0	
29	15,789	0.00	0.0	

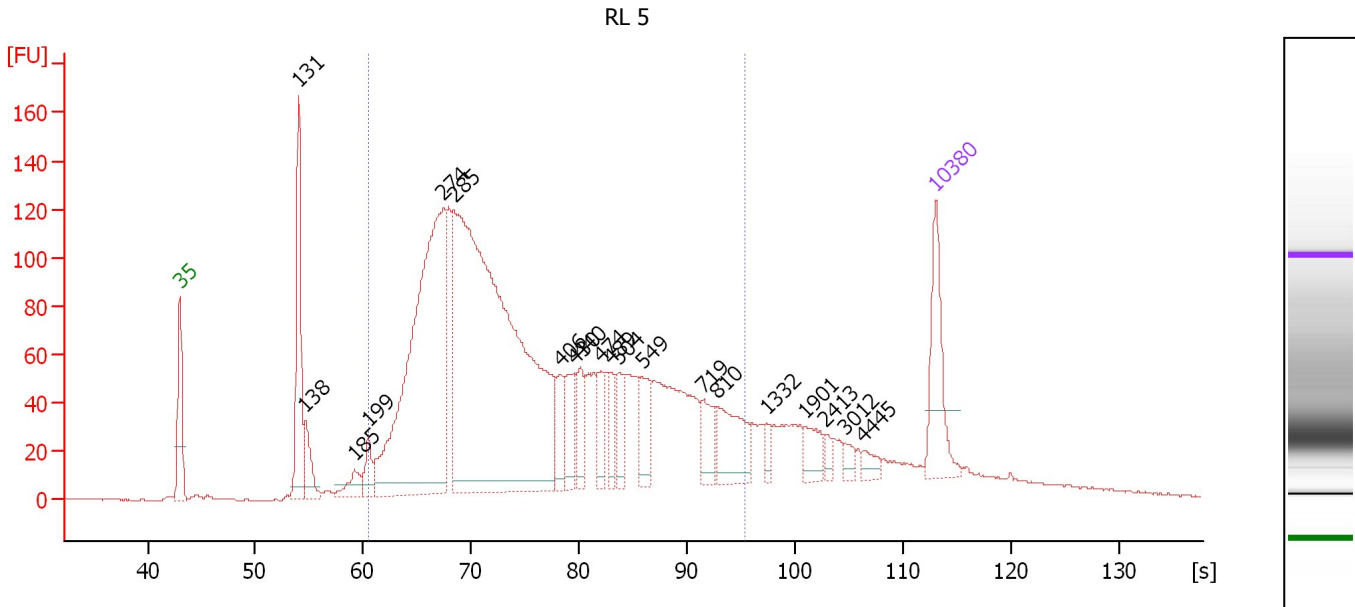
Region table for sample 6 : RL 4

From [s]	To [s]	Average Size [bp]	Molarity [pmol/l]	Conc. [pg/μl]	Corr. Area % of Total	Size distribution in CV [%]	Color	
60.57	95.34	402	8,502.5	1,865.88	1,919.6	80	41.7	

Assay Class: High Sensitivity DNA Assay
 Data Path: C:\...ents and Settings\Bioanalyzer\2013-07-26\2013-07-26_001.xad

Created: 7/26/2013 12:13:42 PM
 Modified: 7/26/2013 12:52:13 PM

Electropherogram Summary Continued ...



Overall Results for sample 7 : RL 5

Number of peaks found: 20 Corr. Area 1: 2,806.1
 Noise: 0.4

Peak table for sample 7 : RL 5

Peak	Size [bp]	Conc. [pg/µl]	Molarity [pmol/l]	Observations
1	35	125.00	5,411.3	Lower Marker
2	131	186.94	2,159.3	
3	138	54.12	594.4	
4	185	30.18	246.7	
5	199	34.08	259.6	
6	274	665.92	3,683.3	
7	285	1,140.92	6,072.9	
8	406	43.39	161.8	
9	430	53.64	188.9	
10	440	43.68	150.4	
11	474	44.60	142.7	
12	489	36.08	111.7	
13	504	37.80	113.6	
14	549	49.11	135.5	
15	719	40.44	85.2	
16	810	78.46	146.7	
17	1,332	11.57	13.2	
18	1,901	27.06	21.6	
19	2,413	8.96	5.6	
20	3,012	10.54	5.3	
21	4,445	12.16	4.1	
22	10,380	75.00	10.9	Upper Marker

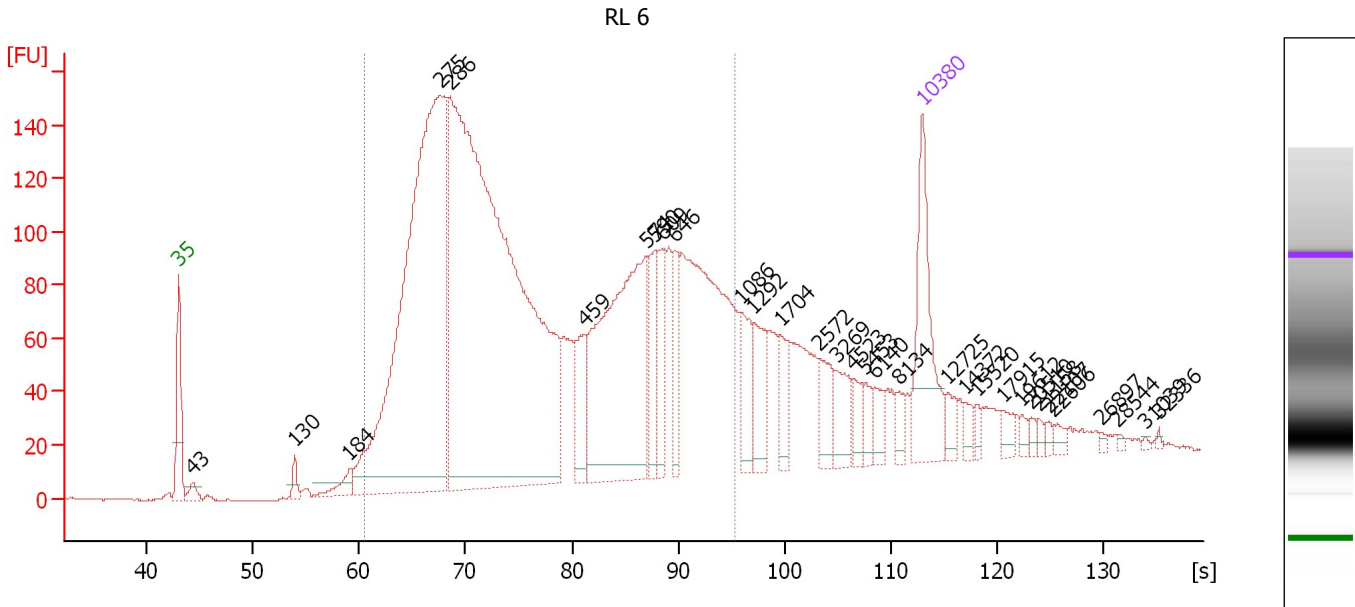
Region table for sample 7 : RL 5

From [s]	To [s]	Average Size [bp]	Molarity [pmol/l]	Conc. [pg/µl]	Corr. Area % of Total	Size distribution in CV [%]	Color
60.57	95.34	408	12,043.0	2,691.72	2,806.1 80	41.4	Blue

Assay Class: High Sensitivity DNA Assay
 Data Path: C:\...ents and Settings\Bioanalyzer\2013-07-26\2013-07-26_001.xad

Created: 7/26/2013 12:13:42 PM
 Modified: 7/26/2013 12:52:13 PM

Electropherogram Summary Continued ...



Overall Results for sample 8 : RL 6

Number of peaks found: 32 Corr. Area 1: 3,648.1
 Noise: 0.4

Peak table for sample 8 : RL 6

Peak	Size [bp]	Conc. [pg/μl]	Molarity [pmol/l]	Observations
1	35	125.00	5,411.3	Lower Marker
2	43	12.04	420.2	
3	130	12.93	150.3	
4	184	21.15	173.8	
5	275	720.01	3,961.4	
6	286	1,046.40	5,548.6	
7	459	48.03	158.4	
8	574	258.25	681.9	
9	590	41.39	106.3	
10	609	41.28	102.7	
11	646	35.49	83.2	
12	1,086	37.69	52.6	
13	1,292	35.19	41.3	
14	1,704	23.82	21.2	
15	2,572	25.69	15.1	
16	3,269	25.62	11.9	
17	4,523	13.97	4.7	
18	5,453	11.13	3.1	
19	6,140	12.50	3.1	
20	8,134	10.13	1.9	
21	10,380	75.00	10.9	Upper Marker
22	12,725	0.00	0.0	
23	14,372	0.00	0.0	
24	15,520	0.00	0.0	
25	17,915	0.00	0.0	
26	19,612	0.00	0.0	

Assay Class: High Sensitivity DNA Assay
Data Path: C:\...ents and Settings\Bioanalyzer\2013-07-26\2013-07-26_001.xad

Created: 7/26/2013 12:13:42 PM
Modified: 7/26/2013 12:52:13 PM

Electropherogram Summary Continued ...**... Peak table for sample 8 : RL 6**

Peak	Size [bp]	Conc. [pg/μl]	Molarity [pmol/l]	Observations
27	20,510	0.00	0.0	
28	21,158	0.00	0.0	
29	22,107	0.00	0.0	
30	22,606	0.00	0.0	
31	26,897	0.00	0.0	
32	28,544	0.00	0.0	
33	31,039	0.00	0.0	
34	32,336	0.00	0.0	

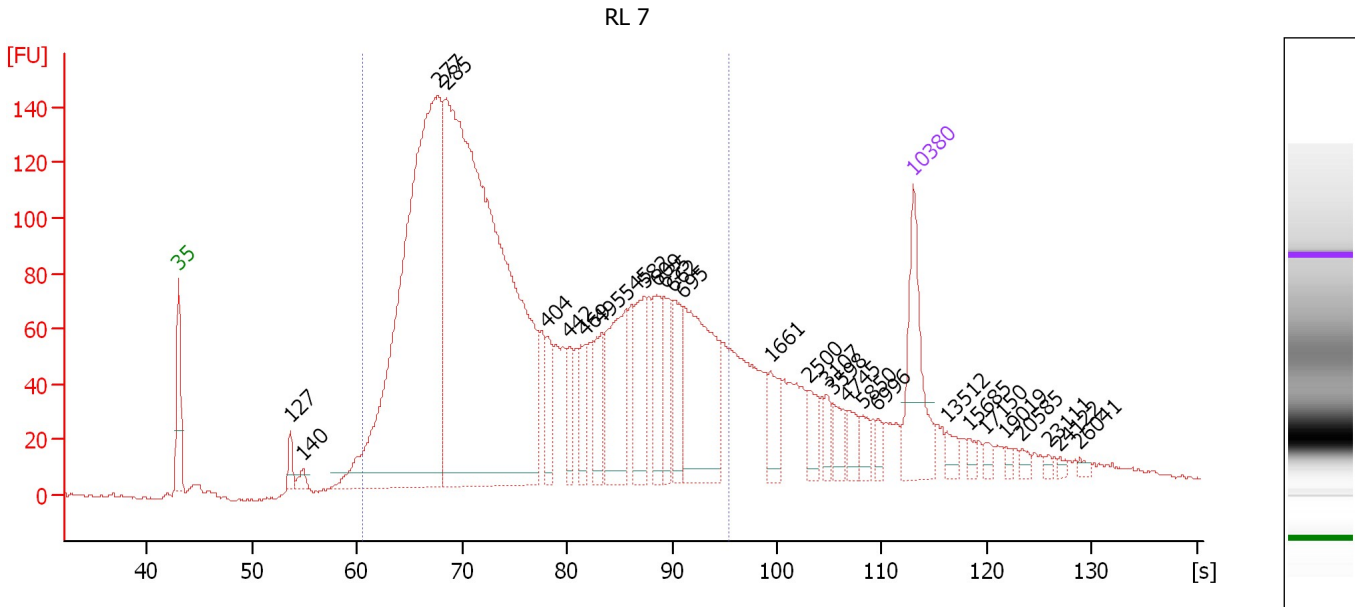
Region table for sample 8 : RL 6

From [s]	To [s]	Average Size [bp]	Molarity [pmol/l]	Conc. [pg/μl]	Corr. Area % of Total	Size distribution in CV [%]	Color	
60.57	95.34	436	10,377.4	2,392.85	3,648.1	80	43.4	

Assay Class: High Sensitivity DNA Assay
 Data Path: C:\...ents and Settings\Bioanalyzer\2013-07-26\2013-07-26_001.xad

Created: 7/26/2013 12:13:42 PM
 Modified: 7/26/2013 12:52:13 PM

Electropherogram Summary Continued ...



Overall Results for sample 9 : RL 7

Number of peaks found: 29 Corr. Area 1: 3,416.0
 Noise: 0.5

Peak table for sample 9 : RL 7

Peak	Size [bp]	Conc. [pg/μl]	Molarity [pmol/l]	Observations
1	35	125.00	5,411.3	Lower Marker
2	127	18.63	221.4	
3	140	11.83	127.7	
4	277	821.92	4,495.4	
5	285	1,144.05	6,075.8	
6	404	39.53	148.2	
7	442	31.46	107.8	
8	469	40.80	131.9	
9	495	47.61	145.7	
10	545	108.05	300.6	
11	582	65.96	171.7	
12	609	49.25	122.5	
13	635	46.19	110.2	
14	662	47.75	109.2	
15	695	169.23	368.9	
16	1,661	29.15	26.6	
17	2,500	21.68	13.1	
18	3,107	11.75	5.7	
19	3,598	18.48	7.8	
20	4,745	15.74	5.0	
21	5,850	13.20	3.4	
22	6,996	8.85	1.9	
23	10,380	75.00	10.9	Upper Marker
24	13,512	0.00	0.0	
25	15,685	0.00	0.0	
26	17,150	0.00	0.0	


Assay Class: High Sensitivity DNA Assay
Data Path: C:\...ents and Settings\Bioanalyzer\2013-07-26\2013-07-26_001.xad

Created: 7/26/2013 12:13:42 PM
Modified: 7/26/2013 12:52:13 PM

Electropherogram Summary Continued ...**... Peak table for sample 9 : RL 7**

Peak	Size [bp]	Conc. [pg/μl]	Molarity [pmol/l]	Observations
27	19,019	0.00	0.0	
28	20,585	0.00	0.0	
29	23,111	0.00	0.0	
30	24,122	0.00	0.0	
31	26,041	0.00	0.0	

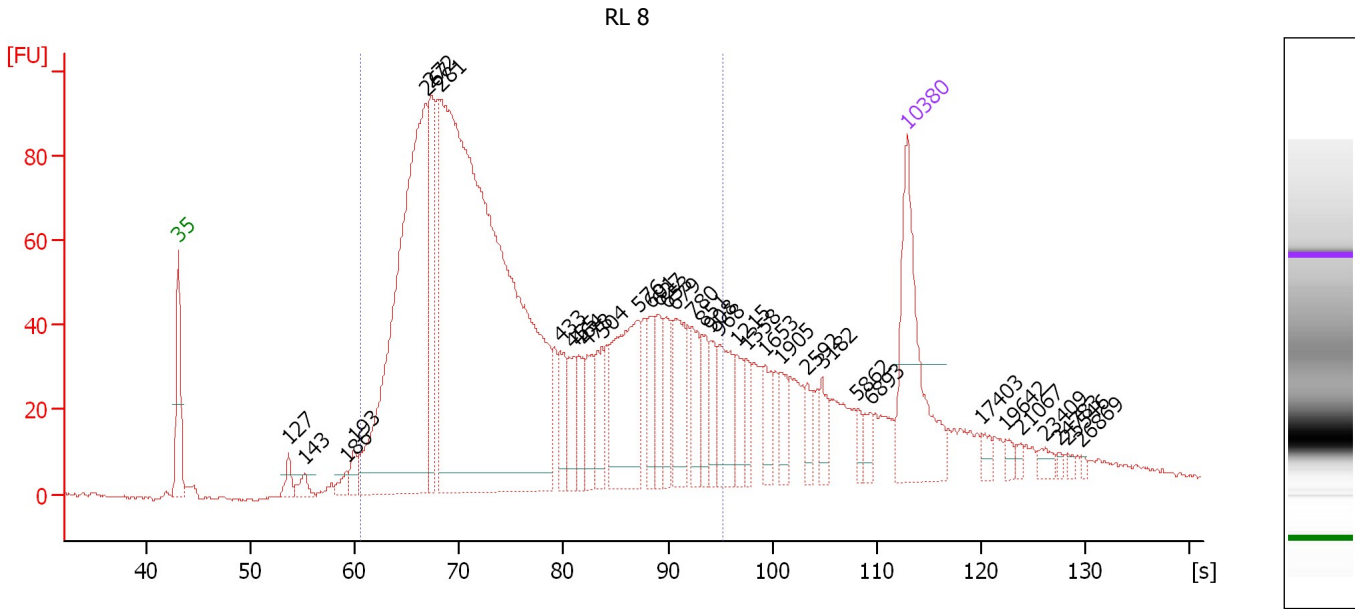
Region table for sample 9 : RL 7

From [s]	To [s]	Average Size [bp]	Molarity [pmol/l]	Conc. [pg/μl]	Corr. Area % of Total	Size distribution in CV [%]	Color	
60.57	95.34	422	12,458.8	2,812.17	3,416.0	82	43.2	

Assay Class: High Sensitivity DNA Assay
 Data Path: C:\...ents and Settings\Bioanalyzer\2013-07-26\2013-07-26_001.xad

Created: 7/26/2013 12:13:42 PM
 Modified: 7/26/2013 12:52:13 PM

Electropherogram Summary Continued ...



Overall Results for sample 10 : RL 8

Number of peaks found: 36 Corr. Area 1: 2,158.6
 Noise: 0.4

Peak table for sample 10 : RL 8

Peak	Size [bp]	Conc. [pg/μl]	Molarity [pmol/l]	Observations
1	35	125.00	5,411.3	Lower Marker
2	127	11.77	140.7	
3	143	10.75	113.6	
4	186	8.40	68.6	
5	193	12.64	99.4	
6	267	408.25	2,318.8	
7	272	79.25	441.0	
8	281	833.26	4,489.6	
9	433	24.60	86.2	
10	455	23.61	78.7	
11	464	20.47	66.9	
12	478	24.74	78.3	
13	504	26.57	79.9	
14	576	88.59	233.0	
15	601	20.62	52.0	
16	627	22.35	54.0	
17	653	20.49	47.5	
18	679	43.34	96.7	
19	780	23.57	45.8	
20	851	20.55	36.6	
21	908	15.55	26.0	
22	968	33.94	53.1	
23	1,215	17.54	21.9	
24	1,358	11.98	13.4	
25	1,653	14.59	13.4	
26	1,905	12.58	10.0	

Assay Class: High Sensitivity DNA Assay
 Data Path: C:\...ents and Settings\Bioanalyzer\2013-07-26\2013-07-26_001.xad


Created: 7/26/2013 12:13:42 PM
 Modified: 7/26/2013 12:52:13 PM

Electropherogram Summary Continued ...

... Peak table for sample 10 : RL 8

Peak	Size [bp]	Conc. [pg/μl]	Molarity [pmol/l]	Observations
27	2,592	10.62	6.2	
28	3,182	11.83	5.6	
29	5,862	5.92	1.5	
30	6,893	7.41	1.6	
31	10,380	75.00	10.9	Upper Marker
32	17,403	0.00	0.0	
33	19,642	0.00	0.0	
34	21,067	0.00	0.0	
35	23,409	0.00	0.0	
36	24,783	0.00	0.0	
37	25,546	0.00	0.0	
38	26,869	0.00	0.0	

Region table for sample 10 : RL 8

From [s]	To [s]	Average Size [bp]	Molarity [pmol/l]	Conc. [pg/μl]	Corr. Area % of Total	Size distribution in CV [%]	Color
60.57	95.34	414	7,761.5	1,728.43	2,158.6 81	43.6	

Assay Class: High Sensitivity DNA Assay
Data Path: C:\...ents and Settings\Bioanalyzer\2013-07-26\2013-07-26_001.xad

Created: 7/26/2013 12:13:42 PM
Modified: 7/26/2013 12:52:13 PM

Gel Image

Assay Class: High Sensitivity DNA Assay
Data Path: C:\...ents and Settings\Bioanalyzer\2013-07-26\2013-07-26_001.xad

Created: 7/26/2013 12:13:42 PM
Modified: 7/26/2013 12:52:13 PM

Invalid Samples

Sample 11 has not been run, no results available.

Assay Class: High Sensitivity DNA Assay
 Data Path: C:\...ents and Settings\Bioanalyzer\2013-07-26\2013-07-26_001.xad

Created: 7/26/2013 12:13:42 PM
 Modified: 7/26/2013 12:52:13 PM

Run Logbook

Description	Number	Source	Category	Sub Category	Time	Time Zone	User	Host
Run ended on port 1 (Number of wells acquired: 11)		Instrument	Run		7/26/2013 12:52:10 PM	(GMT --07:00) Pacific Standard Time	UC Davis	D8XSMGH1
Run started on port 1 (File: C:\Documents and Settings\Bioanalyzer\2013-07-26\2013-07-26_001.xad)		Instrument	Run		7/26/2013 12:13:48 PM	(GMT --07:00) Pacific Standard Time	UC Davis	D8XSMGH1
Product Number : G2938B		Instrument	Run		7/26/2013 12:13:48 PM	(GMT --07:00) Pacific Standard Time	UC Davis	D8XSMGH1
Name :		Instrument	Run		7/26/2013 12:13:48 PM	(GMT --07:00) Pacific Standard Time	UC Davis	D8XSMGH1
Vendor : Agilent Technologies		Instrument	Run		7/26/2013 12:13:48 PM	(GMT --07:00) Pacific Standard Time	UC Davis	D8XSMGH1
Serial# : DE13701086		Instrument	Run		7/26/2013 12:13:48 PM	(GMT --07:00) Pacific Standard Time	UC Davis	D8XSMGH1
Firmware : C.01.069		Instrument	Run		7/26/2013 12:13:48 PM	(GMT --07:00) Pacific Standard Time	UC Davis	D8XSMGH1
Cartridge : Electrode		Instrument	Run		7/26/2013 12:13:48 PM	(GMT --07:00) Pacific Standard Time	UC Davis	D8XSMGH1