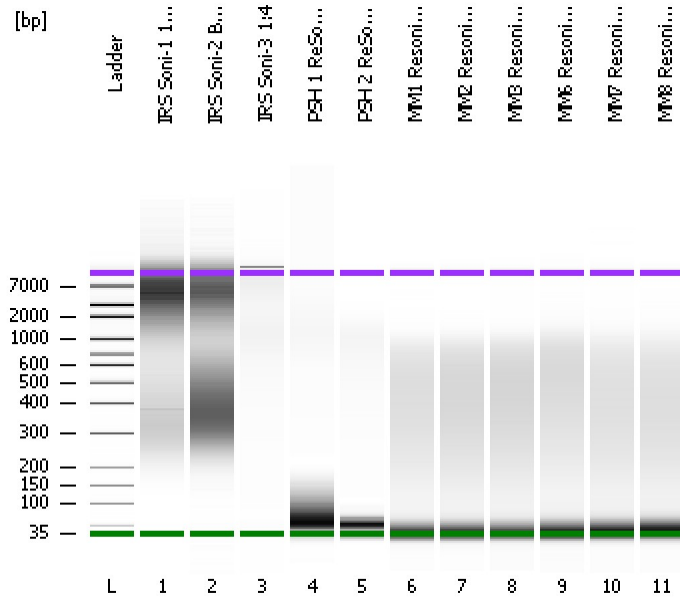


Assay Class: High Sensitivity DNA Assay
Data Path: C:\...ents and Settings\Bioanalyzer\2013-07-30\2013-07-30_002.xad

Created: 7/30/2013 3:35:57 PM
Modified: 7/30/2013 4:19:07 PM

Electrophoresis File Run Summary



Instrument Information:

Instrument Name: DE13701086 Firmware: C.01.069
Serial#: DE13701086 Type: G2938B

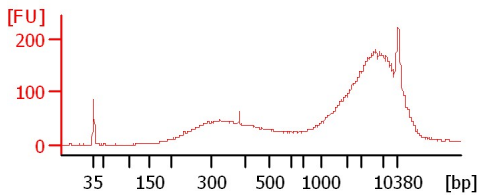
Assay Information:

Assay Origin Path: C:\Program Files\Agilent\2100 bioanalyzer\2100 expert\assays\dsDNA\High Sensitivity DNA.xsy
Assay Class: High Sensitivity DNA Assay
Version: 1.03
Assay Comments: Copyright © 2003-2010 Agilent Technologies

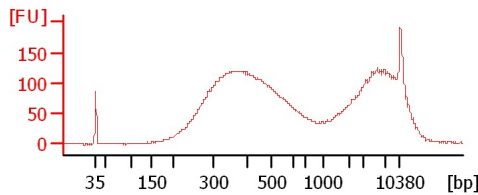
Chip Information:

Chip Lot #:
Reagent Kit Lot #:
Chip Comments:

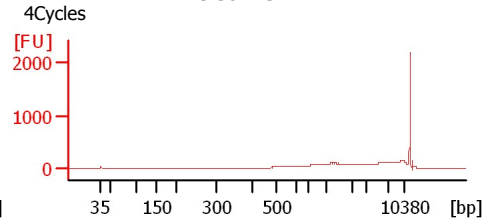
IRS Soni-1 1:12 Beads Cleanup



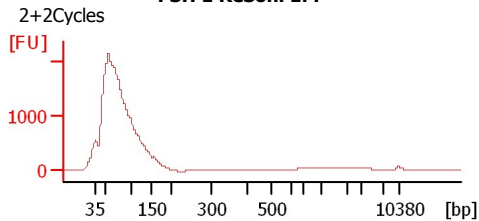
IRS Soni-2 Beads Cleanup



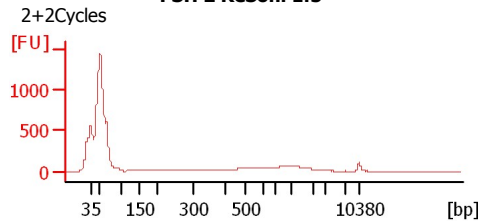
IRS Soni-3 1:4



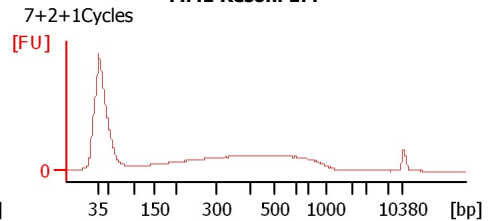
PSH 1 ReSoni 1:4



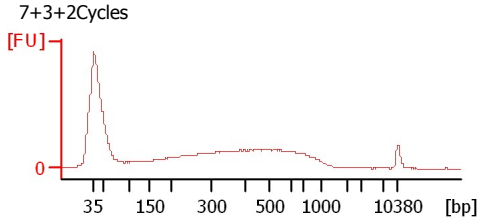
PSH 2 ReSoni 1:5



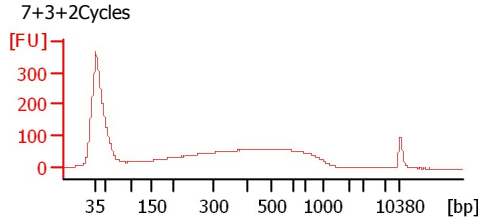
MM1 Resoni 1:4



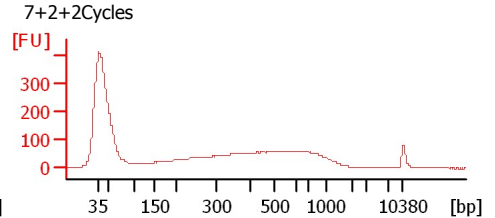
MM2 Resoni 1:4



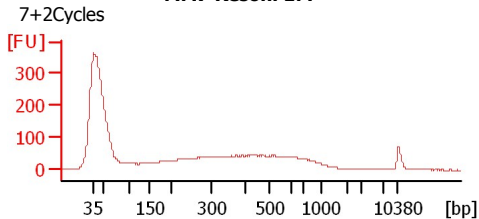
MM3 Resoni 1:4



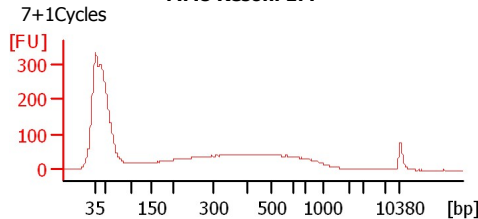
MM6 Resoni 1:4



MM7 Resoni 1:4



MM8 Resoni 1:4



Assay Class: High Sensitivity DNA Assay
Data Path: C:\...ents and Settings\Bioanalyzer\2013-07-30\2013-07-30_002.xad

Created: 7/30/2013 3:35:57 PM
Modified: 7/30/2013 4:19:07 PM

Electrophoresis File Run Summary (Chip Summary)

Sample Name	Sample Comment	Rest. Digest	Status	Observation	Result Label	Result Color
IRS Soni-1 1:12 Beads Cleanup		<input type="checkbox"/>	✓			
IRS Soni-2 Beads Cleanup		<input type="checkbox"/>	✓			
IRS Soni-3 1:4	4Cycles	<input type="checkbox"/>	✓			
PSH 1 ReSoni 1:4	2+2Cycles	<input type="checkbox"/>	✓			
PSH 2 ReSoni 1:5	2+2Cycles	<input type="checkbox"/>	✓			
MM1 Resoni 1:4	7+2+1Cycles	<input type="checkbox"/>	✓			
MM2 Resoni 1:4	7+3+2Cycles	<input type="checkbox"/>	✓			
MM3 Resoni 1:4	7+3+2Cycles	<input type="checkbox"/>	✓			
MM6 Resoni 1:4	7+2+2Cycles	<input type="checkbox"/>	✓			
MM7 Resoni 1:4	7+2Cycles	<input type="checkbox"/>	✓			
MM8 Resoni 1:4	7+1Cycles	<input type="checkbox"/>	✓			
Ladder		<input type="checkbox"/>	✓			

Chip Lot #

Reagent Kit Lot #

Chip Comments :

Assay Class: High Sensitivity DNA Assay
Data Path: C:\...ents and Settings\Bioanalyzer\2013-07-30\2013-07-30_002.xad

Created: 7/30/2013 3:35:57 PM
Modified: 7/30/2013 4:19:07 PM

Electrophoresis Assay Details

General Analysis Settings

Number of Available Sample and Ladder Wells (Max.) : 12
Minimum Visible Range [s] : 32
Maximum Visible Range [s] : 138
Start Analysis Time Range [s] : 33
End Analysis Time Range [s] : 137.5
Ladder Concentration [pg/μl] : 1950
Uses Standard Area for Ladder Fragments
Lower Marker Concentration [pg/μl] : 125
Upper Marker Concentration [pg/μl] : 75
Used Upper Marker for Quantitation
Standard Curve Fit is Point to Point
Show Data Aligned to Lower and Upper Marker

Integrator Settings

Integration Start Time [s] : 33.05
Integration End Time [s] : 137
Slope Threshold : 0.8
Height Threshold [FU] : 5
Area Threshold : 0.1
Width Threshold [s] : 0.6
Baseline Plateau [s] : 0.5

Filter Settings

Filter Width [s] : 0.5
Polynomial Order : 4

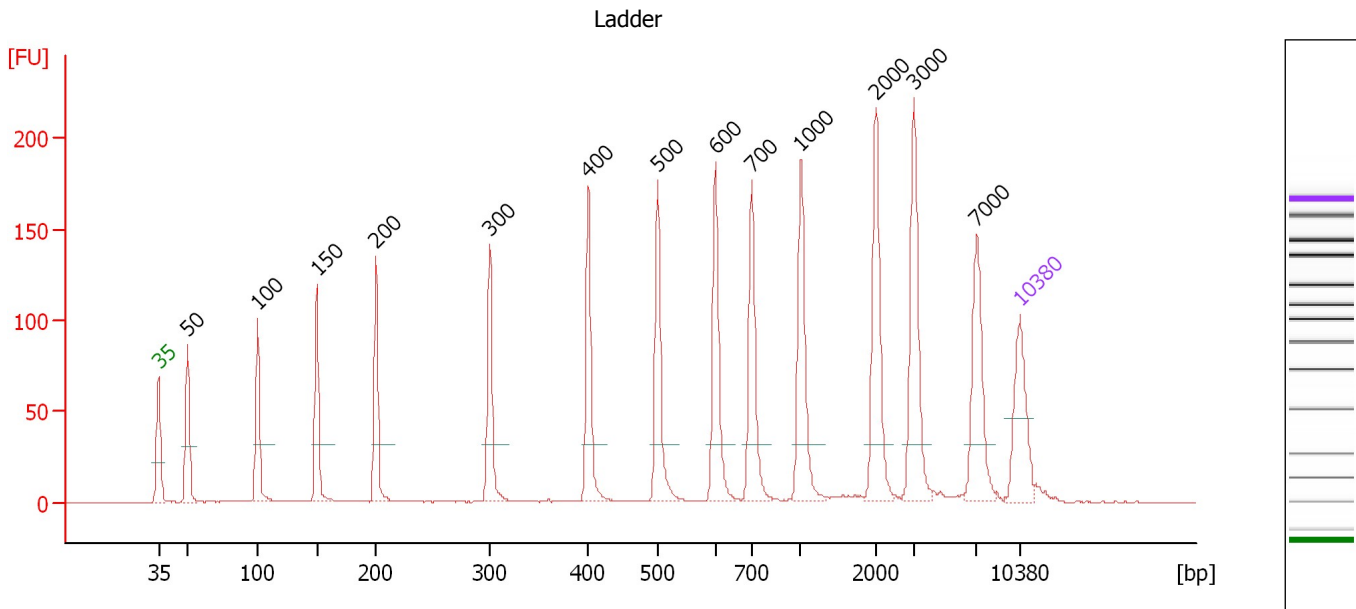
Ladder

Ladder Peak	Size	Area
1	35	160
2	50	210
3	100	208
4	150	221
5	200	242
6	300	270
7	400	305
8	500	306
9	600	336
10	700	321
11	1000	366
12	2000	413
13	3000	411
14	7000	400
15	10380	214

Assay Class: High Sensitivity DNA Assay
 Data Path: C:\...ents and Settings\Bioanalyzer\2013-07-30\2013-07-30_002.xad

Created: 7/30/2013 3:35:57 PM
 Modified: 7/30/2013 4:19:07 PM

Electropherogram Summary



Overall Results for Ladder

Noise: 0.2

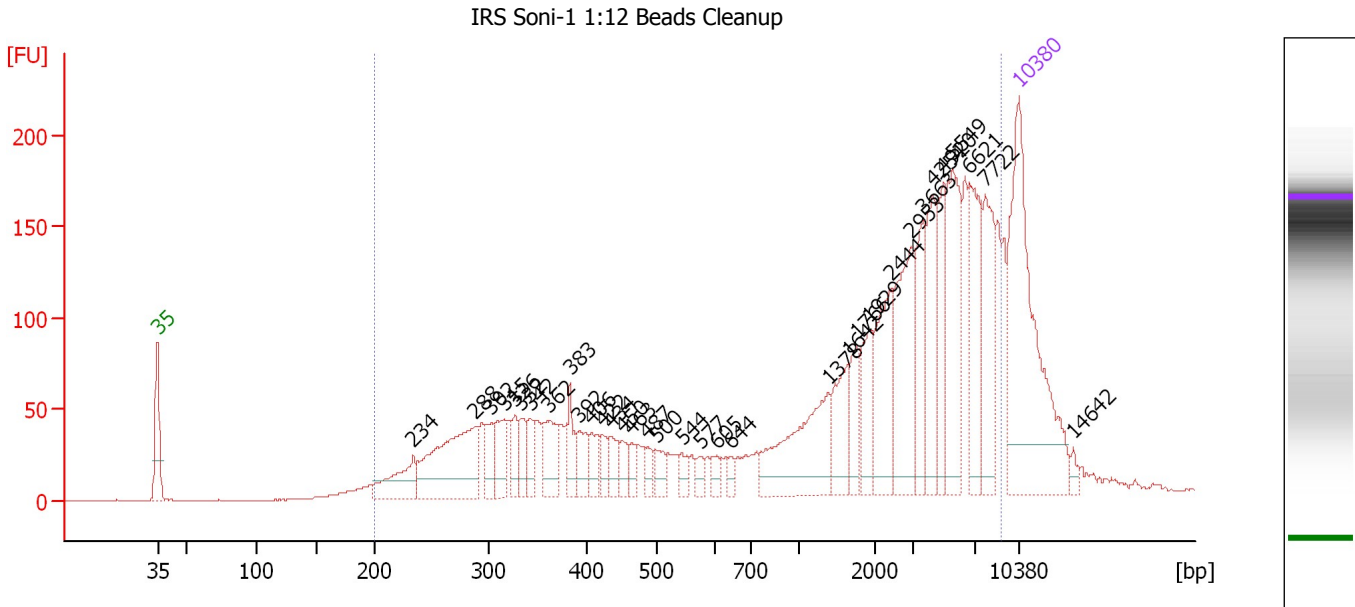
Peak table for Ladder

Peak	Size [bp]	Conc. [pg/μl]	Molarity [pmol/l]	Observations
1	35	125.00	5,411.3	Lower Marker
2	50	150.00	4,545.5	Ladder Peak
3	100	150.00	2,272.7	Ladder Peak
4	150	150.00	1,515.2	Ladder Peak
5	200	150.00	1,136.4	Ladder Peak
6	300	150.00	757.6	Ladder Peak
7	400	150.00	568.2	Ladder Peak
8	500	150.00	454.5	Ladder Peak
9	600	150.00	378.8	Ladder Peak
10	700	150.00	324.7	Ladder Peak
11	1,000	150.00	227.3	Ladder Peak
12	2,000	150.00	113.6	Ladder Peak
13	3,000	150.00	75.8	Ladder Peak
14	7,000	150.00	32.5	Ladder Peak
15	10,380	75.00	10.9	Upper Marker

Assay Class: High Sensitivity DNA Assay
 Data Path: C:\...ents and Settings\Bioanalyzer\2013-07-30\2013-07-30_002.xad

Created: 7/30/2013 3:35:57 PM
 Modified: 7/30/2013 4:19:07 PM

Electropherogram Summary Continued ...



Setpoint Deviations for sample 1 : IRS Soni-1 1:12 Beads Cleanup

Height Threshold [FU] : 10

Overall Results for sample 1 : IRS Soni-1 1:12 Beads Cleanup

Number of peaks found: 34 Corr. Area 1: 3,191.3
 Noise: 0.1

Peak table for sample 1 : IRS Soni-1 1:12 Beads Cleanup

Peak	Size [bp]	Conc. [pg/μl]	Molarity [pmol/l]	Observations
1	35	125.00	5,411.3	Lower Marker
2	234	22.03	142.7	
3	288	58.97	310.2	
4	302	10.28	51.5	
5	315	16.21	77.9	
6	326	9.58	44.5	
7	332	9.33	42.6	
8	342	9.07	40.2	
9	362	17.96	75.2	
10	383	12.07	47.8	
11	392	10.37	40.1	
12	406	8.79	32.8	
13	422	6.12	22.0	
14	434	7.99	27.9	
15	450	6.23	21.0	
16	463	5.15	16.9	
17	487	5.05	15.7	
18	500	5.94	18.0	
19	544	4.78	13.3	
20	577	4.05	10.6	
21	605	4.20	10.5	
22	644	3.19	7.5	

Assay Class: High Sensitivity DNA Assay
 Data Path: C:\...ents and Settings\Bioanalyzer\2013-07-30\2013-07-30_002.xad

Created: 7/30/2013 3:35:57 PM
 Modified: 7/30/2013 4:19:07 PM

Electropherogram Summary Continued ...

... Peak table for sample 1 : IRS Soni-1 1:12 Beads Cleanup

Peak	Size [bp]	Conc. [pg/μl]	Molarity [pmol/l]	Observations
23	1,378	41.66	45.8	
24	1,642	17.33	16.0	
25	1,766	11.91	10.2	
26	1,929	15.69	12.3	
27	2,444	27.03	16.8	
28	2,953	37.30	19.1	
29	3,663	21.41	8.9	
30	4,254	22.26	7.9	
31	4,920	20.69	6.4	
32	5,549	36.08	9.9	
33	6,621	29.46	6.7	
34	7,722	27.34	5.4	
35	10,380	75.00	10.9	Upper Marker
36	14,642	0.00	0.0	

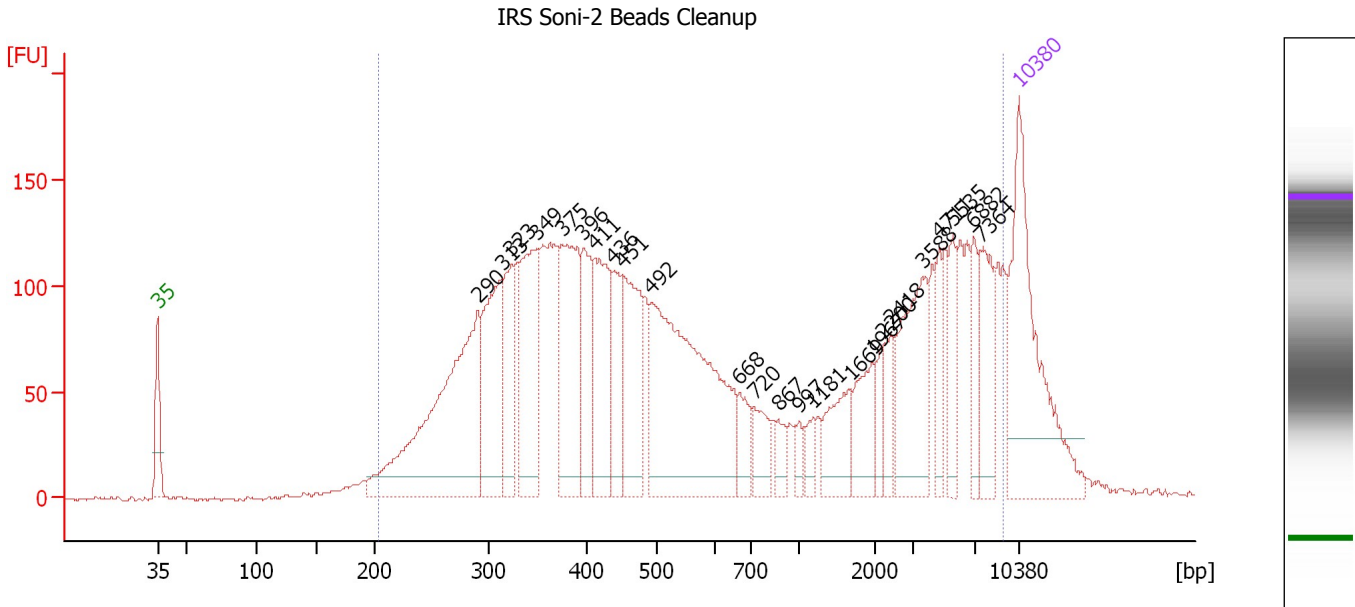
Region table for sample 1 : IRS Soni-1 1:12 Beads Cleanup

From [bp]	To [bp]	Average Size [bp]	Molarity [pmol/l]	Conc. [pg/μl]	Corr. Area	% of Total	Size distribution in CV [%]	Color
200	9,036	3,003	1,538.8	648.76	3,191.3	96	88.2	■

Assay Class: High Sensitivity DNA Assay
 Data Path: C:\...ents and Settings\Bioanalyzer\2013-07-30\2013-07-30_002.xad

Created: 7/30/2013 3:35:57 PM
 Modified: 7/30/2013 4:19:07 PM

Electropherogram Summary Continued ...



Setpoint Deviations for sample 2 : IRS Soni-2 Beads Cleanup

Height Threshold [FU] : 10

Overall Results for sample 2 : IRS Soni-2 Beads Cleanup

Number of peaks found: 24 Corr. Area 1: 4,689.2
 Noise: 0.7

Peak table for sample 2 : IRS Soni-2 Beads Cleanup

Peak	Size [bp]	Conc. [pg/μl]	Molarity [pmol/l]	Observations
1	35	125.00	5,411.3	Lower Marker
2	290	167.83	875.5	
3	313	72.52	350.5	
4	323	42.94	201.4	
5	349	75.81	329.3	
6	375	79.62	321.6	
7	396	37.06	141.8	
8	411	57.08	210.6	
9	436	31.21	108.4	
10	451	56.47	189.5	
11	492	164.51	506.4	
12	668	14.41	32.7	
13	720	15.52	32.7	
14	867	7.77	13.6	
15	997	5.10	7.8	
16	1,181	7.07	9.1	
17	1,669	23.13	21.0	
18	1,967	22.16	17.1	
19	2,200	8.36	5.8	
20	2,418	12.59	7.9	
21	3,588	48.84	20.6	
22	4,711	13.56	4.4	

Assay Class: High Sensitivity DNA Assay
 Data Path: C:\...ents and Settings\Bioanalyzer\2013-07-30\2013-07-30_002.xad


Created: 7/30/2013 3:35:57 PM
 Modified: 7/30/2013 4:19:07 PM

Electropherogram Summary Continued ...

... Peak table for sample 2 : IRS Soni-2 Beads Cleanup

Peak	Size [bp]	Conc. [pg/μl]	Molarity [pmol/l]	Observations
23	5,535	16.38	4.5	
24	6,882	16.16	3.6	
25	7,364	26.57	5.5	
26	10,380	75.00	10.9	Upper Marker

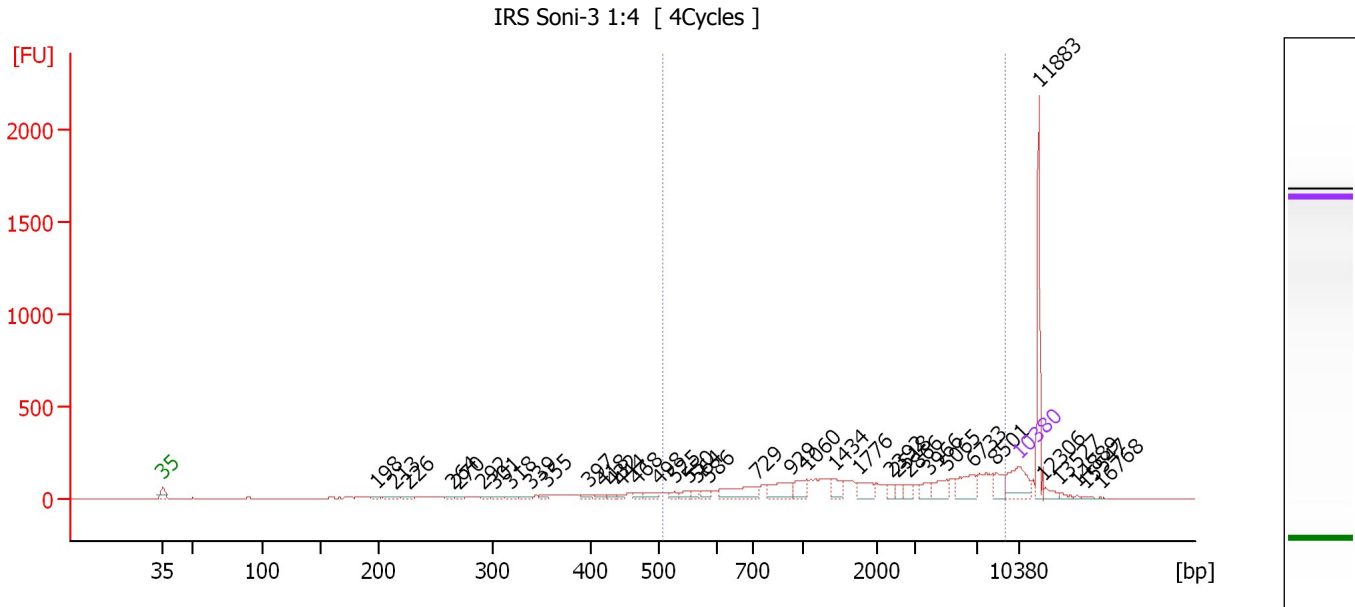
Region table for sample 2 : IRS Soni-2 Beads Cleanup

From [bp]	To [bp]	Average Size [bp]	Molarity [pmol/l]	Conc. [pg/μl]	Corr. Area	% of Total	Size distribution in CV [%]	Color
203	9,217	1,825	3,925.7	1,201.78	4,689.2	98	100.0	

Assay Class: High Sensitivity DNA Assay
 Data Path: C:\...ents and Settings\Bioanalyzer\2013-07-30\2013-07-30_002.xad

Created: 7/30/2013 3:35:57 PM
 Modified: 7/30/2013 4:19:07 PM

Electropherogram Summary Continued ...



Overall Results for sample 3 : IRS Soni-3 1:4

Number of peaks found: 38 Corr. Area 1: 2,330.6
 Noise: 0.8

Peak table for sample 3 : IRS Soni-3 1:4

Peak	Size [bp]	Conc. [pg/μl]	Molarity [pmol/l]	Observations
1	35	125.00	5,411.3	Lower Marker
2	198	4.05	31.0	
3	213	7.08	50.3	
4	226	5.38	36.0	
5	264	5.69	32.7	
6	270	4.44	24.9	
7	292	6.03	31.3	
8	301	8.40	42.2	
9	318	9.69	46.1	
10	339	9.18	41.0	
11	355	7.39	31.6	
12	397	9.47	36.1	
13	418	11.08	40.2	
14	432	8.92	31.3	
15	444	7.55	25.8	
16	468	11.54	37.3	
17	498	18.90	57.5	
18	525	11.47	33.1	
19	550	14.75	40.6	
20	564	11.59	31.1	
21	586	15.38	39.8	
22	729	77.43	160.9	
23	929	63.05	102.8	
24	1,060	37.44	53.5	
25	1,434	29.53	31.2	
26	1,776	35.37	30.2	

Assay Class: High Sensitivity DNA Assay
 Data Path: C:\...ents and Settings\Bioanalyzer\2013-07-30\2013-07-30_002.xad

Created: 7/30/2013 3:35:57 PM
 Modified: 7/30/2013 4:19:07 PM

Electropherogram Summary Continued ...

... Peak table for sample 3 : IRS Soni-3 1:4

Peak	Size [bp]	Conc. [pg/μl]	Molarity [pmol/l]	Observations
27	2,392	14.18	9.0	
28	2,518	12.97	7.8	
29	2,866	15.00	7.9	
30	3,966	20.92	8.0	
31	5,065	37.56	11.2	
32	6,733	56.07	12.6	
33	8,501	29.85	5.3	
34	10,380	75.00	10.9	Upper Marker
35	11,883	0.00	0.0	
36	12,306	0.00	0.0	
37	13,527	0.00	0.0	
38	14,889	0.00	0.0	
39	15,547	0.00	0.0	
40	16,768	0.00	0.0	

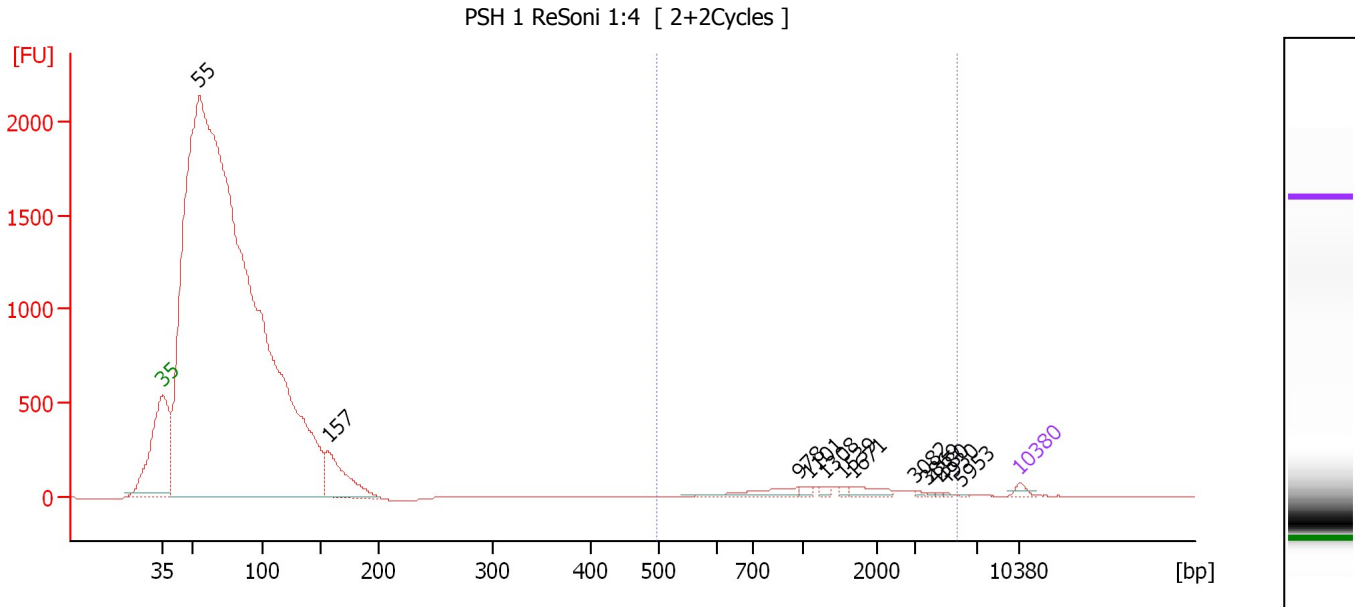
Region table for sample 3 : IRS Soni-3 1:4

From [bp]	To [bp]	Average Size [bp]	Molarity [pmol/l]	Conc. [pg/μl]	Corr. Area	% of Total	Size distribution in CV [%]	Color
506	9,275	3,078	836.3	715.03	2,330.6	66	86.0	■

Assay Class: High Sensitivity DNA Assay
 Data Path: C:\...ents and Settings\Bioanalyzer\2013-07-30\2013-07-30_002.xad

Created: 7/30/2013 3:35:57 PM
 Modified: 7/30/2013 4:19:07 PM

Electropherogram Summary Continued ...



Overall Results for sample 4 : PSH 1 ReSoni 1:4

Number of peaks found: 12 Corr. Area 1: 801.9
 Noise: 0.5

Peak table for sample 4 : PSH 1 ReSoni 1:4

Peak	Size [bp]	Conc. [pg/µl]	Molarity [pmol/l]	Observations
1	35	125.00	5,411.3	Lower Marker
2	55	69,682.42	1,911,130.8	
3	157	1,869.03	18,072.7	
4	978	278.79	431.7	
5	1,101	63.60	87.5	
6	1,308	59.45	68.9	
7	1,539	56.35	55.5	
8	1,671	177.47	160.9	
9	3,082	22.20	10.9	
10	3,869	14.53	5.7	
11	4,380	13.17	4.6	
12	4,930	11.45	3.5	
13	5,953	7.08	1.8	
14	10,380	75.00	10.9	Upper Marker

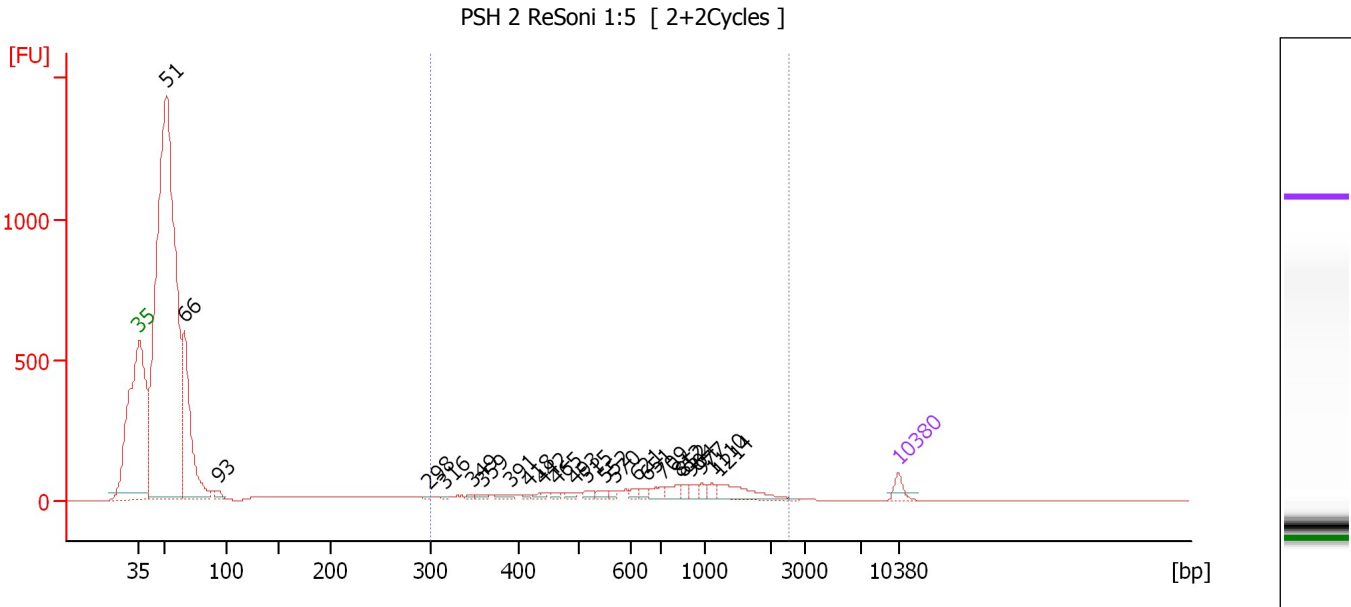
Region table for sample 4 : PSH 1 ReSoni 1:4

From [bp]	To [bp]	Average Size [bp]	Molarity [pmol/l]	Conc. [pg/µl]	Corr. Area	% of Total	Size distribution in CV [%]	Color
497	5,744	1,649	1,273.5	969.40	801.9	2	63.6	Blue

Assay Class: High Sensitivity DNA Assay
 Data Path: C:\...ents and Settings\Bioanalyzer\2013-07-30\2013-07-30_002.xad

Created: 7/30/2013 3:35:57 PM
 Modified: 7/30/2013 4:19:07 PM

Electropherogram Summary Continued ...



Overall Results for sample 5 : PSH 2 ReSoni 1:5

Number of peaks found: 24 Corr. Area 1: 1,366.9
 Noise: 0.4


Peak table for sample 5 : PSH 2 ReSoni 1:5

Peak	Size [bp]	Conc. [pg/μl]	Molarity [pmol/l]	Observations
1	35	125.00	5,411.3	Lower Marker
2	51	12,109.64	356,394.1	
3	66	2,266.45	52,278.1	
4	93	65.14	1,058.6	
5	298	7.56	38.5	
6	316	8.36	40.1	
7	349	13.26	57.6	
8	359	23.70	100.0	
9	391	37.53	145.3	
10	418	19.80	71.7	
11	442	33.40	114.6	
12	465	22.59	73.6	
13	493	35.95	110.5	
14	515	37.94	111.6	
15	552	44.18	121.3	
16	570	32.96	87.6	
17	621	42.88	104.6	
18	651	42.58	99.1	
19	709	71.92	153.6	
20	812	82.71	154.3	
21	852	41.15	73.1	
22	904	56.22	94.3	
23	977	47.08	73.0	
24	1,110	48.59	66.3	
25	1,214	220.97	275.8	
26	10,380	75.00	10.9	Upper Marker

Assay Class: High Sensitivity DNA Assay
Data Path: C:\...ents and Settings\Bioanalyzer\2013-07-30\2013-07-30_002.xad

Created: 7/30/2013 3:35:57 PM
Modified: 7/30/2013 4:19:07 PM

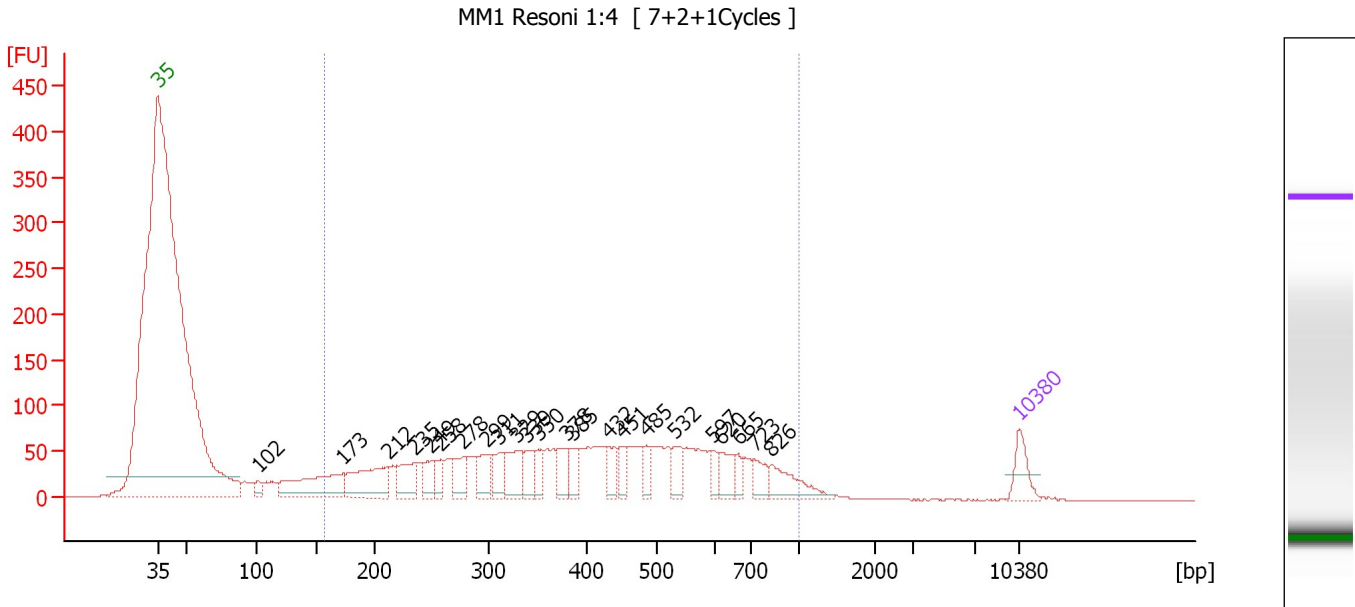
Electropherogram Summary Continued ...**... Region table for sample 5 : PSH 2 ReSoni 1:5**

From [bp]	To [bp]	Average Size [bp]	Molarity [pmol/l]	Conc. [pg/μl]	Corr. Area	% of Total	Size distribution in CV [%]	Co lor
301	2,552	832	3,819.6	1,485.82	1,366.9	13	55.9	

Assay Class: High Sensitivity DNA Assay
 Data Path: C:\...ents and Settings\Bioanalyzer\2013-07-30\2013-07-30_002.xad

Created: 7/30/2013 3:35:57 PM
 Modified: 7/30/2013 4:19:07 PM

Electropherogram Summary Continued ...



Overall Results for sample 6 : MM1 Resoni 1:4

Number of peaks found: 23 Corr. Area 1: 2,337.6
 Noise: 0.2

Peak table for sample 6 : MM1 Resoni 1:4

Peak	Size [bp]	Conc. [pg/μl]	Molarity [pmol/l]	Observations
1	35	125.00	5,411.3	Lower Marker
2	102	46.61	694.4	
3	173	346.92	3,038.2	
4	212	290.80	2,081.0	
5	235	142.14	917.0	
6	249	89.96	547.0	
7	258	65.80	386.4	
8	278	117.50	640.8	
9	299	109.61	555.9	
10	311	110.47	538.7	
11	329	140.80	648.1	
12	339	94.54	422.9	
13	350	72.94	315.6	
14	378	95.40	382.2	
15	385	75.01	295.5	
16	432	77.22	271.1	
17	451	71.89	241.7	
18	485	61.51	192.1	
19	532	83.43	237.6	
20	597	47.59	120.8	
21	620	87.06	212.8	
22	665	47.26	107.7	
23	723	73.17	153.4	
24	826	134.41	246.6	
25	10,380	75.00	10.9	Upper Marker

Assay Class: High Sensitivity DNA Assay
Data Path: C:\...ents and Settings\Bioanalyzer\2013-07-30\2013-07-30_002.xad

Created: 7/30/2013 3:35:57 PM
Modified: 7/30/2013 4:19:07 PM

Electropherogram Summary Continued ...

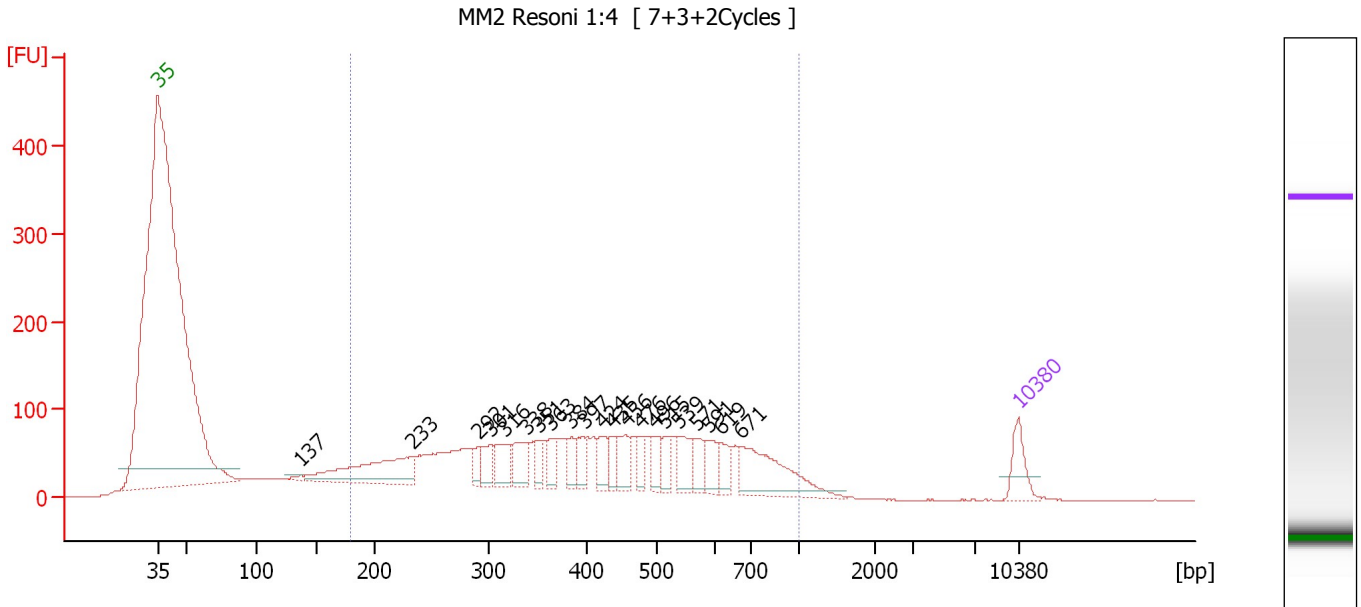
... Region table for sample 6 : MM1 Resoni 1:4

From [bp]	To [bp]	Average Size [bp]	Molarity [pmol/l]	Conc. [pg/μl]	Corr. Area	% of Total	Size distribution in CV [%]	Color
158	1,000	427	15,331.6	3,331.97	2,337.6	89	41.6	■

Assay Class: High Sensitivity DNA Assay
 Data Path: C:\...ents and Settings\Bioanalyzer\2013-07-30\2013-07-30_002.xad

Created: 7/30/2013 3:35:57 PM
 Modified: 7/30/2013 4:19:07 PM

Electropherogram Summary Continued ...



Overall Results for sample 7 : MM2 Resoni 1:4

Number of peaks found: 21 Corr. Area 1: 2,799.2
 Noise: 0.1

Peak table for sample 7 : MM2 Resoni 1:4

Peak	Size [bp]	Conc. [pg/μl]	Molarity [pmol/l]	Observations
1	35	125.00	5,411.3	Lower Marker
2	137	13.82	152.6	
3	233	341.43	2,222.6	
4	292	51.79	268.9	
5	301	77.95	391.8	
6	316	117.49	563.0	
7	338	113.83	510.4	
8	351	56.03	241.7	
9	363	64.94	271.2	
10	384	56.13	221.5	
11	397	68.37	261.1	
12	424	76.91	275.2	
13	435	55.54	193.3	
14	456	94.05	312.4	
15	476	55.09	175.3	
16	496	71.37	217.9	
17	515	65.82	193.6	
18	539	98.69	277.4	
19	571	69.80	185.4	
20	591	73.15	187.5	
21	619	62.18	152.2	
22	671	276.32	623.5	
23	10,380	75.00	10.9	Upper Marker

Assay Class: High Sensitivity DNA Assay
Data Path: C:\...ents and Settings\Bioanalyzer\2013-07-30\2013-07-30_002.xad

Created: 7/30/2013 3:35:57 PM
Modified: 7/30/2013 4:19:07 PM

Electropherogram Summary Continued ...

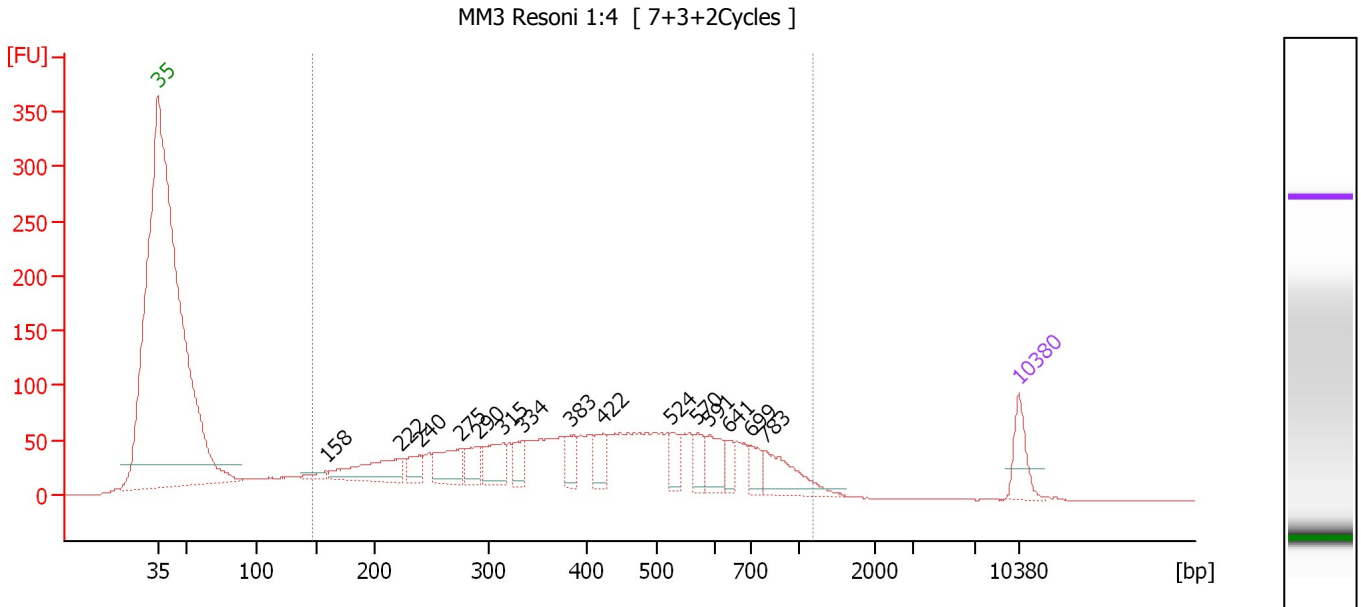
... Region table for sample 7 : MM2 Resoni 1:4

From [bp]	To [bp]	Average Size [bp]	Molarity [pmol/l]	Conc. [pg/μl]	Corr. Area	% of Total	Size distribution in CV [%]	Color
180	1,000	436	14,117.0	3,226.13	2,799.2	85	40.2	■

Assay Class: High Sensitivity DNA Assay
 Data Path: C:\...ents and Settings\Bioanalyzer\2013-07-30\2013-07-30_002.xad

Created: 7/30/2013 3:35:57 PM
 Modified: 7/30/2013 4:19:07 PM

Electropherogram Summary Continued ...



Overall Results for sample 8 : MM3 Resoni 1:4

Number of peaks found: 15 Corr. Area 1: 2,400.9
 Noise: 0.2

Peak table for sample 8 : MM3 Resoni 1:4

Peak	Size [bp]	Conc. [pg/μl]	Molarity [pmol/l]	Observations
1	35	125.00	5,411.3	Lower Marker
2	158	24.31	232.6	
3	222	185.60	1,265.4	
4	240	64.01	404.9	
5	275	134.75	743.2	
6	290	81.26	424.1	
7	315	123.11	592.8	
8	334	68.02	308.5	
9	383	70.85	280.2	
10	422	84.95	305.1	
11	524	61.65	178.2	
12	570	60.35	160.3	
13	591	88.39	226.5	
14	641	39.10	92.5	
15	699	52.52	113.9	
16	783	143.25	277.4	
17	10,380	75.00	10.9	Upper Marker

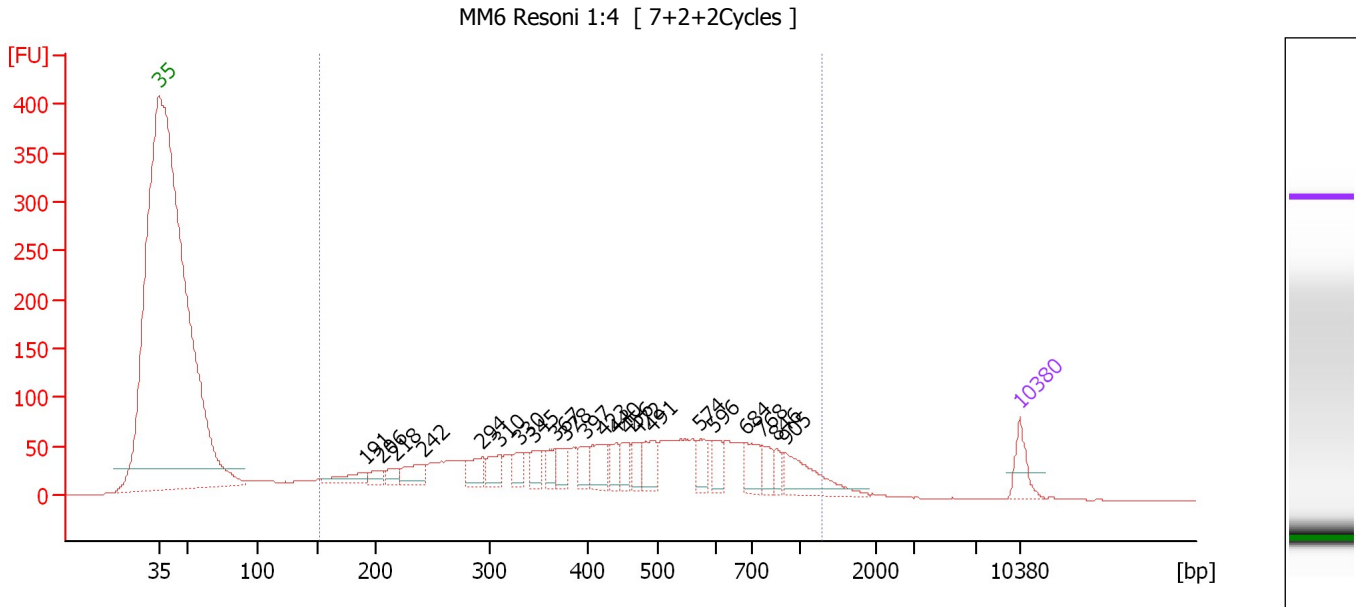
Region table for sample 8 : MM3 Resoni 1:4

From [bp]	To [bp]	Average Size [bp]	Molarity [pmol/l]	Conc. [pg/μl]	Corr. Area	% of Total	Size distribution in CV [%]	Color
148	1,184	440	12,877.6	2,797.01	2,400.9	91	44.2	Blue

Assay Class: High Sensitivity DNA Assay
 Data Path: C:\...ents and Settings\Bioanalyzer\2013-07-30\2013-07-30_002.xad

Created: 7/30/2013 3:35:57 PM
 Modified: 7/30/2013 4:19:07 PM

Electropherogram Summary Continued ...



Overall Results for sample 9 : MM6 Resoni 1:4

Number of peaks found: 22 Corr. Area 1: 2,297.2
 Noise: 0.1

Peak table for sample 9 : MM6 Resoni 1:4

Peak	Size [bp]	Conc. [pg/μl]	Molarity [pmol/l]	Observations
1	35	125.00	5,411.3	Lower Marker
2	191	79.89	633.1	
3	206	46.95	346.1	
4	218	45.91	319.1	
5	242	107.71	673.5	
6	294	90.76	468.2	
7	310	83.57	408.9	
8	330	67.29	309.0	
9	345	73.95	324.8	
10	367	62.12	256.8	
11	378	74.78	300.0	
12	397	71.99	274.6	
13	423	122.93	440.2	
14	440	70.93	244.4	
15	456	71.67	238.4	
16	472	71.85	230.5	
17	491	107.35	331.4	
18	574	72.96	192.7	
19	596	70.54	179.3	
20	684	100.91	223.4	
21	768	64.65	127.6	
22	846	39.13	70.1	
23	905	170.43	285.3	
24	10,380	75.00	10.9	Upper Marker

Assay Class: High Sensitivity DNA Assay
Data Path: C:\...ents and Settings\Bioanalyzer\2013-07-30\2013-07-30_002.xad

Created: 7/30/2013 3:35:57 PM
Modified: 7/30/2013 4:19:07 PM

Electropherogram Summary Continued ...

... Region table for sample 9 : MM6 Resoni 1:4

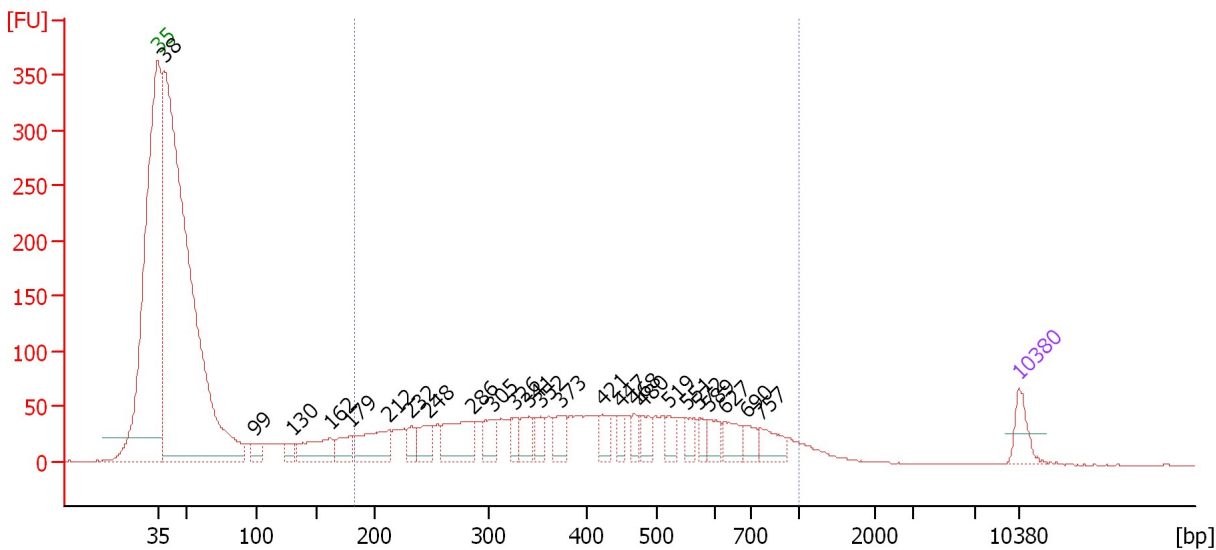
From [bp]	To [bp]	Average Size [bp]	Molarity [pmol/l]	Conc. [pg/μl]	Corr. Area	% of Total	Size distribution in CV [%]	Color
153	1,280	476	14,273.5	3,286.21	2,297.2	90	46.3	■

Assay Class: High Sensitivity DNA Assay
 Data Path: C:\...ents and Settings\Bioanalyzer\2013-07-30\2013-07-30_002.xad

Created: 7/30/2013 3:35:57 PM
 Modified: 7/30/2013 4:19:07 PM

Electropherogram Summary Continued ...

MM7 Resoni 1:4 [7+2Cycles]



Overall Results for sample 10 : MM7 Resoni 1:4

Number of peaks found: 25 Corr. Area 1: 1,710.1
 Noise: 0.2

Peak table for sample 10 : MM7 Resoni 1:4

Peak	Size [bp]	Conc. [pg/μl]	Molarity [pmol/l]	Observations
1	35	125.00	5,411.3	Lower Marker
2	38	4,426.53	174,867.3	
3	99	70.62	1,083.7	
4	130	50.09	583.6	
5	162	186.50	1,742.5	
6	179	101.04	856.3	
7	212	219.81	1,572.2	
8	232	58.04	379.2	
9	248	118.19	722.3	
10	286	219.55	1,161.8	
11	305	103.56	514.9	
12	326	62.59	290.9	
13	341	96.70	429.4	
14	352	69.39	298.3	
15	373	88.82	360.8	
16	421	76.50	275.3	
17	447	50.92	172.4	
18	468	50.50	163.4	
19	480	67.64	213.3	
20	519	64.54	188.3	
21	551	49.40	135.8	
22	572	43.88	116.1	
23	589	65.07	167.3	
24	627	84.41	204.2	
25	690	57.24	125.7	
26	757	88.84	177.7	

Assay Class: High Sensitivity DNA Assay
Data Path: C:\...ents and Settings\Bioanalyzer\2013-07-30\2013-07-30_002.xad

Created: 7/30/2013 3:35:57 PM
Modified: 7/30/2013 4:19:07 PM

Electropherogram Summary Continued ...**... Peak table for sample 10 : MM7 Resoni 1:4**

Peak	Size [bp]	Conc. [pg/ μ l]	Molarity [pmol/l]	Observations
27	10,380	75.00	10.9	Upper Marker

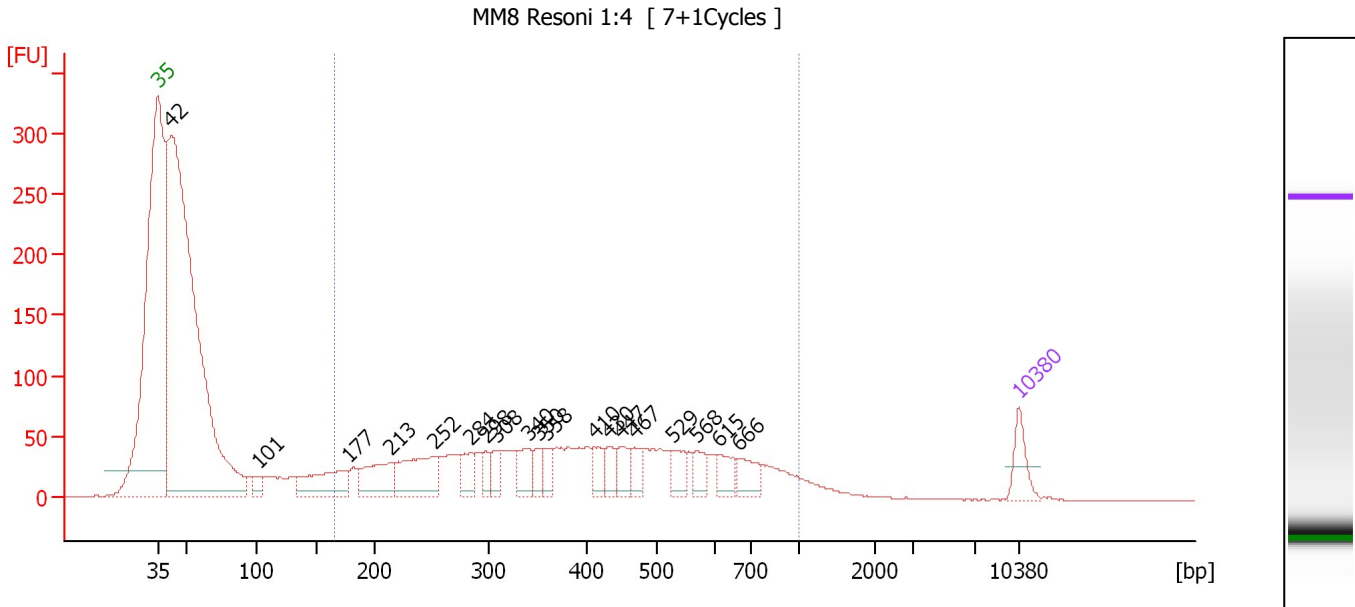
Region table for sample 10 : MM7 Resoni 1:4

From [bp]	To [bp]	Average Size [bp]	Molarity [pmol/l]	Conc. [pg/ μ l]	Corr. Area	% of Total	Size distribution in CV [%]	Color
184	1,000	433	11,494.9	2,612.87	1,710.1	42	40.7	

Assay Class: High Sensitivity DNA Assay
 Data Path: C:\...ents and Settings\Bioanalyzer\2013-07-30\2013-07-30_002.xad

Created: 7/30/2013 3:35:57 PM
 Modified: 7/30/2013 4:19:07 PM

Electropherogram Summary Continued ...



Overall Results for sample 11 : MM8 Resoni 1:4

Number of peaks found: 19 Corr. Area 1: 1,714.7
 Noise: 0.2

Peak table for sample 11 : MM8 Resoni 1:4

Peak	Size [bp]	Conc. [pg/μl]	Molarity [pmol/l]	Observations
1	35	125.00	5,411.3	Lower Marker
2	42	3,783.14	137,161.1	
3	101	58.38	874.1	
4	177	241.41	2,061.7	
5	213	203.35	1,445.4	
6	252	268.92	1,616.7	
7	284	83.04	443.1	
8	298	57.11	290.5	
9	308	61.03	300.6	
10	340	105.38	469.0	
11	350	54.51	236.1	
12	358	62.09	262.8	
13	410	68.71	254.0	
14	430	67.89	239.3	
15	447	74.11	251.2	
16	467	65.28	211.8	
17	529	76.75	219.8	
18	568	64.29	171.5	
19	615	74.46	183.5	
20	666	79.97	182.0	
21	10,380	75.00	10.9	Upper Marker

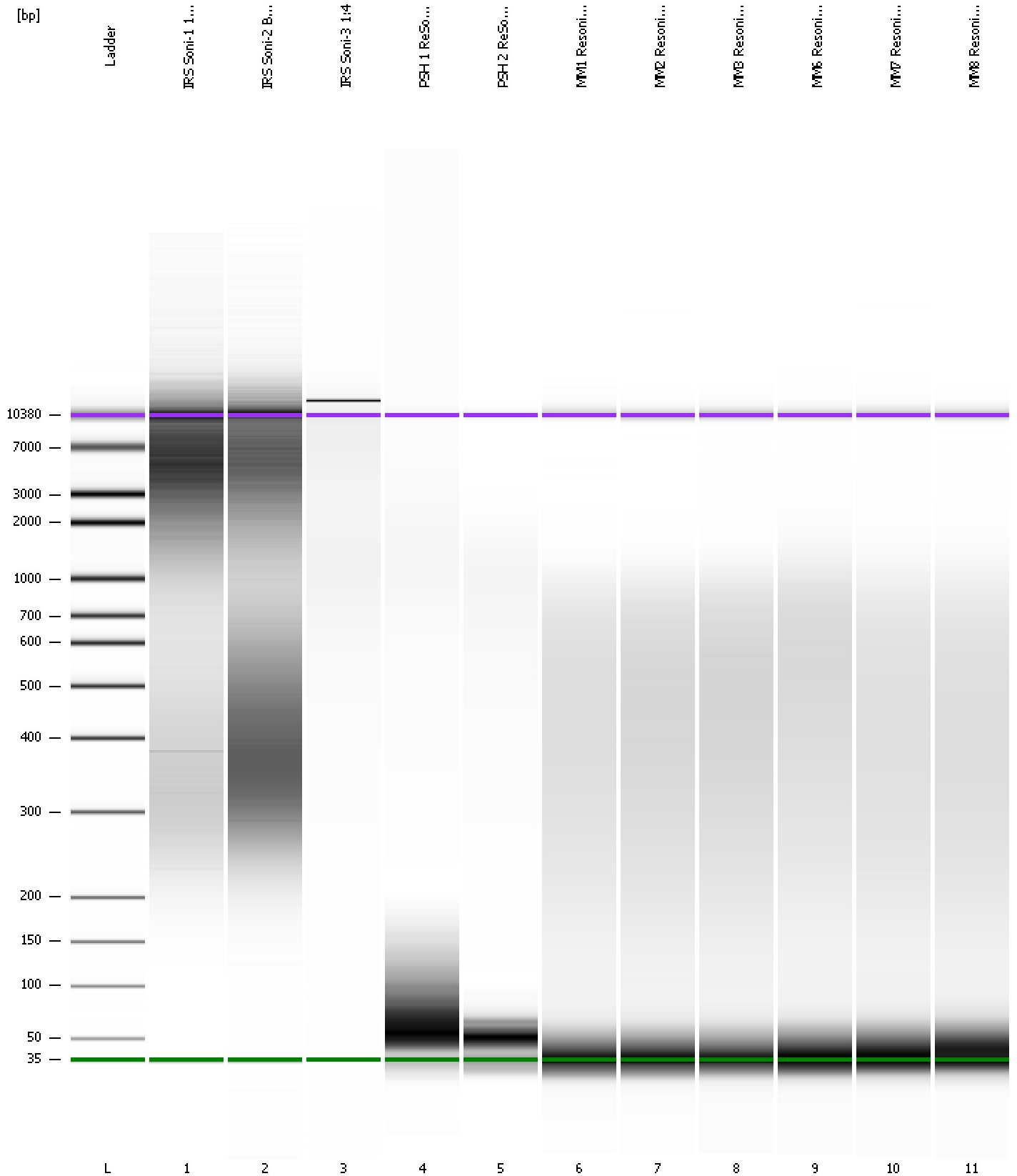
Region table for sample 11 : MM8 Resoni 1:4

From [bp]	To [bp]	Average Size [bp]	Molarity [pmol/l]	Conc. [pg/μl]	Corr. Area	% of Total	Size distribution in CV [%]	Color
165	1,000	422	11,837.9	2,560.01	1,714.7	45	42.2	Blue

Assay Class: High Sensitivity DNA Assay
Data Path: C:\...ents and Settings\Bioanalyzer\2013-07-30\2013-07-30_002.xad

Created: 7/30/2013 3:35:57 PM
Modified: 7/30/2013 4:19:07 PM

Gel Image



Assay Class: High Sensitivity DNA Assay
 Data Path: C:\...ents and Settings\Bioanalyzer\2013-07-30\2013-07-30_002.xad

Created: 7/30/2013 3:35:57 PM
 Modified: 7/30/2013 4:19:07 PM

Run Logbook

Description	Number	Source	Category	Sub Category	Time	Time Zone	User	Host
Run ended on port 1 (Number of wells acquired: 12)		Instrument	Run		7/30/2013 4:16:21 PM	(GMT --07:00) Pacific Standard Time	UC Davis	D8XSMGH1
Run started on port 1 (File: C:\Documents and Settings\Bioanalyzer\2013-07-30\2013-07-30_002.xad)		Instrument	Run		7/30/2013 3:35:57 PM	(GMT --07:00) Pacific Standard Time	UC Davis	D8XSMGH1
Product Number : G2938B		Instrument	Run		7/30/2013 3:35:57 PM	(GMT --07:00) Pacific Standard Time	UC Davis	D8XSMGH1
Name :		Instrument	Run		7/30/2013 3:35:57 PM	(GMT --07:00) Pacific Standard Time	UC Davis	D8XSMGH1
Vendor : Agilent Technologies		Instrument	Run		7/30/2013 3:35:57 PM	(GMT --07:00) Pacific Standard Time	UC Davis	D8XSMGH1
Serial# : DE13701086		Instrument	Run		7/30/2013 3:35:57 PM	(GMT --07:00) Pacific Standard Time	UC Davis	D8XSMGH1
Firmware : C.01.069		Instrument	Run		7/30/2013 3:35:57 PM	(GMT --07:00) Pacific Standard Time	UC Davis	D8XSMGH1
Cartridge : Electrode		Instrument	Run		7/30/2013 3:35:57 PM	(GMT --07:00) Pacific Standard Time	UC Davis	D8XSMGH1