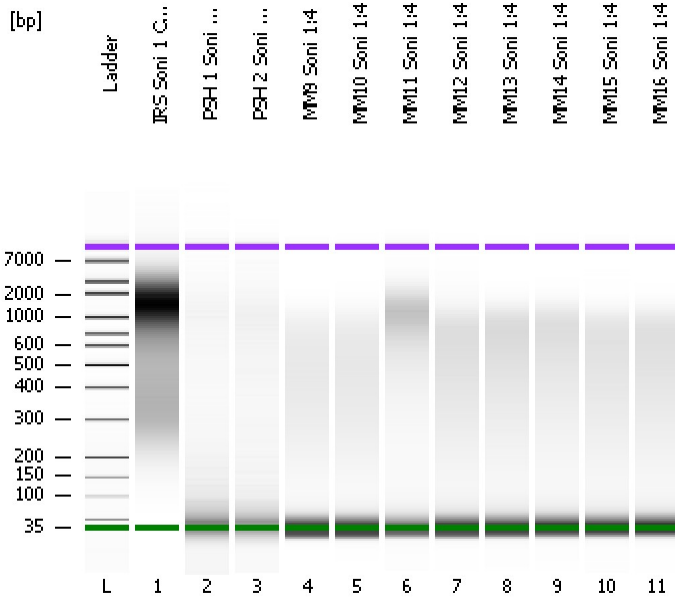


Assay Class: High Sensitivity DNA Assay
Data Path: C:\...ents and Settings\Bioanalyzer\2013-08-01\2013-08-01_001.xad

Created: 8/1/2013 9:47:36 AM
Modified: 8/1/2013 10:43:31 AM

Electrophoresis File Run Summary



Instrument Information:

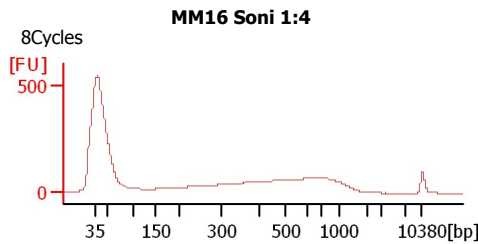
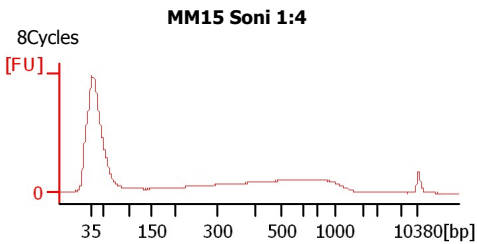
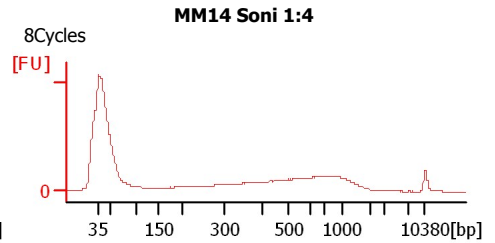
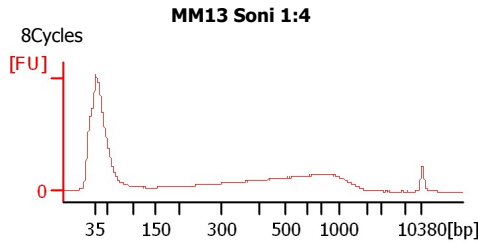
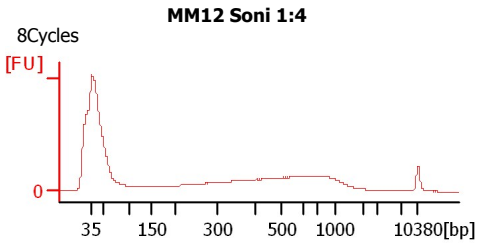
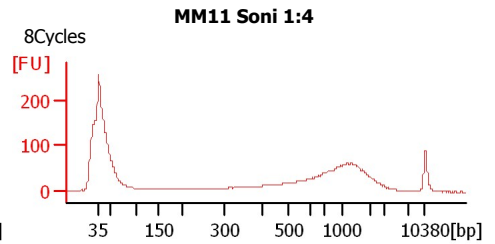
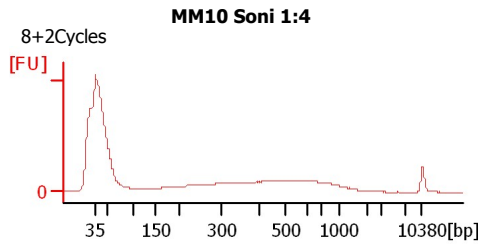
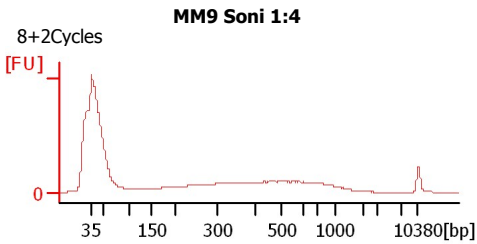
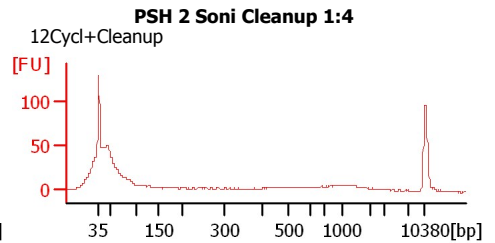
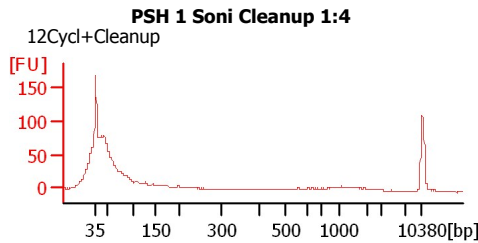
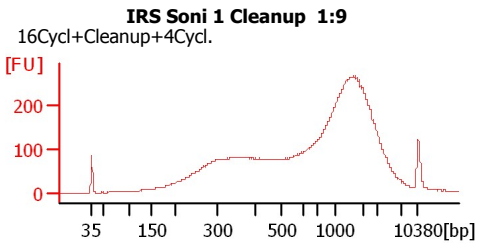
Instrument Name: DE13701086 Firmware: C.01.069
Serial#: DE13701086 Type: G2938B

Assay Information:

Assay Origin Path: C:\Program Files\Agilent\2100 bioanalyzer\2100 expert\assays\dsDNA\High Sensitivity DNA.xsy
Assay Class: High Sensitivity DNA Assay
Version: 1.03
Assay Comments: Copyright © 2003-2010 Agilent Technologies

Chip Information:

Chip Lot #:
Reagent Kit Lot #:
Chip Comments:



Assay Class: High Sensitivity DNA Assay
 Data Path: C:\...ents and Settings\Bioanalyzer\2013-08-01\2013-08-01_001.xad

Created: 8/1/2013 9:47:36 AM
 Modified: 8/1/2013 10:43:31 AM

Electrophoresis File Run Summary (Chip Summary)

Sample Name	Sample Comment	Rest. Digest	Status	Observation	Result Label	Result Color
IRS Soni 1 Cleanup 1:9	16Cycl+Cleanup+4Cycl.	<input type="checkbox"/>	✓			
PSH 1 Soni Cleanup 1:4	12Cycl+Cleanup	<input type="checkbox"/>	✓			
PSH 2 Soni Cleanup 1:4	12Cycl+Cleanup	<input type="checkbox"/>	✓			
MM9 Soni 1:4	8+2Cycles	<input type="checkbox"/>	✓			
MM10 Soni 1:4	8+2Cycles	<input type="checkbox"/>	✓			
MM11 Soni 1:4	8Cycles	<input type="checkbox"/>	✓			
MM12 Soni 1:4	8Cycles	<input type="checkbox"/>	✓			
MM13 Soni 1:4	8Cycles	<input type="checkbox"/>	✓			
MM14 Soni 1:4	8Cycles	<input type="checkbox"/>	✓			
MM15 Soni 1:4	8Cycles	<input type="checkbox"/>	✓			
MM16 Soni 1:4	8Cycles	<input type="checkbox"/>	✓			
Ladder		<input type="checkbox"/>	✓			

Chip Lot #

Reagent Kit Lot #

Chip Comments :

Assay Class: High Sensitivity DNA Assay
Data Path: C:\...ents and Settings\Bioanalyzer\2013-08-01\2013-08-01_001.xad

Created: 8/1/2013 9:47:36 AM
Modified: 8/1/2013 10:43:31 AM

Electrophoresis Assay Details

General Analysis Settings

Number of Available Sample and Ladder Wells (Max.) : 12
Minimum Visible Range [s] : 32
Maximum Visible Range [s] : 138
Start Analysis Time Range [s] : 33
End Analysis Time Range [s] : 137.5
Ladder Concentration [pg/μl] : 1950
Uses Standard Area for Ladder Fragments
Lower Marker Concentration [pg/μl] : 125
Upper Marker Concentration [pg/μl] : 75
Used Upper Marker for Quantitation
Standard Curve Fit is Point to Point
Show Data Aligned to Lower and Upper Marker

Integrator Settings

Integration Start Time [s] : 33.05
Integration End Time [s] : 137
Slope Threshold : 0.8
Height Threshold [FU] : 5
Area Threshold : 0.1
Width Threshold [s] : 0.6
Baseline Plateau [s] : 0.5

Filter Settings

Filter Width [s] : 0.5
Polynomial Order : 4

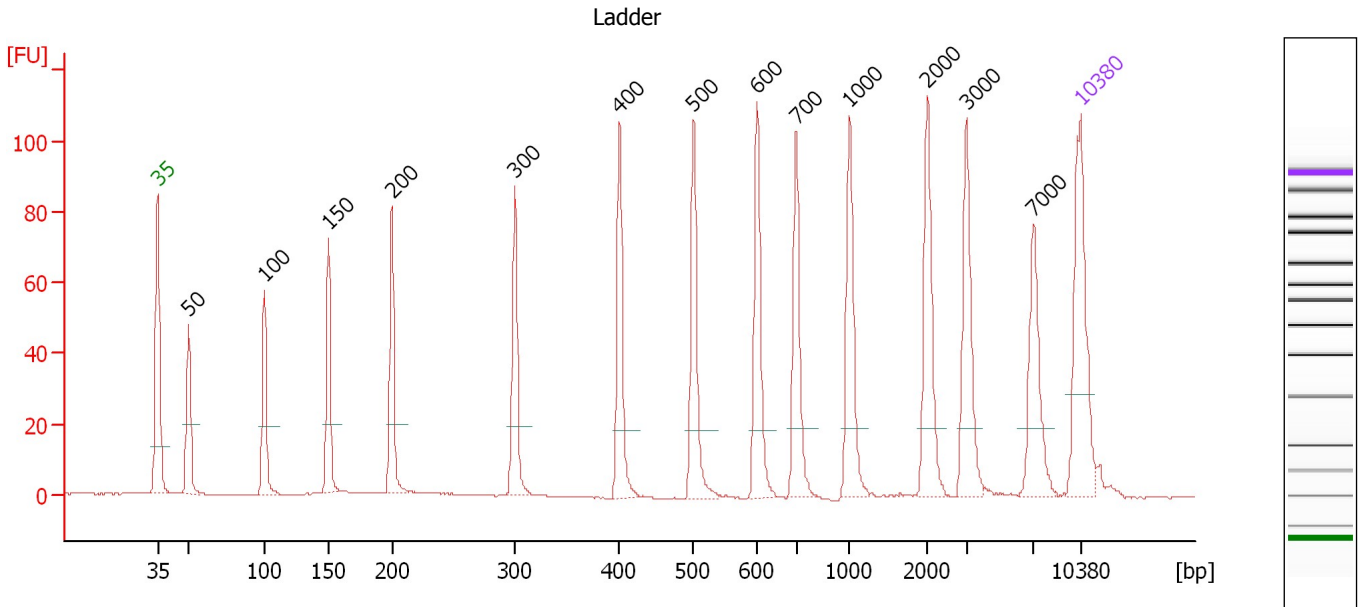
Ladder

Ladder Peak	Size	Area
1	35	160
2	50	210
3	100	208
4	150	221
5	200	242
6	300	270
7	400	305
8	500	306
9	600	336
10	700	321
11	1000	366
12	2000	413
13	3000	411
14	7000	400
15	10380	214

Assay Class: High Sensitivity DNA Assay
 Data Path: C:\...ents and Settings\Bioanalyzer\2013-08-01\2013-08-01_001.xad

Created: 8/1/2013 9:47:36 AM
 Modified: 8/1/2013 10:43:31 AM

Electropherogram Summary



Overall Results for Ladder

Noise: 0.1

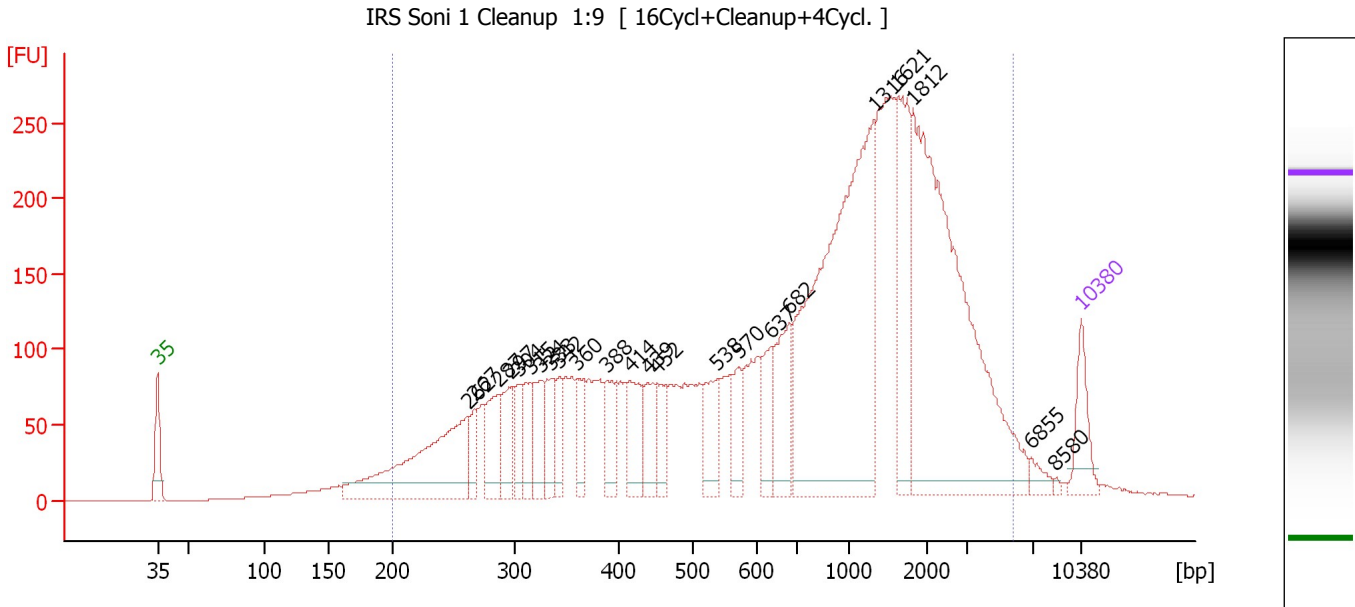
Peak table for Ladder

Peak	Size [bp]	Conc. [pg/μl]	Molarity [pmol/l]	Observations
1	35	125.00	5,411.3	Lower Marker
2	50	150.00	4,545.5	Ladder Peak
3	100	150.00	2,272.7	Ladder Peak
4	150	150.00	1,515.2	Ladder Peak
5	200	150.00	1,136.4	Ladder Peak
6	300	150.00	757.6	Ladder Peak
7	400	150.00	568.2	Ladder Peak
8	500	150.00	454.5	Ladder Peak
9	600	150.00	378.8	Ladder Peak
10	700	150.00	324.7	Ladder Peak
11	1,000	150.00	227.3	Ladder Peak
12	2,000	150.00	113.6	Ladder Peak
13	3,000	150.00	75.8	Ladder Peak
14	7,000	150.00	32.5	Ladder Peak
15	10,380	75.00	10.9	Upper Marker

Assay Class: High Sensitivity DNA Assay
 Data Path: C:\...ents and Settings\Bioanalyzer\2013-08-01\2013-08-01_001.xad

Created: 8/1/2013 9:47:36 AM
 Modified: 8/1/2013 10:43:31 AM

Electropherogram Summary Continued ...



Setpoint Deviations for sample 1 : IRS Soni 1 Cleanup 1:9

Height Threshold [FU] : 10

Overall Results for sample 1 : IRS Soni 1 Cleanup 1:9

Number of peaks found: 23 Corr. Area 1: 6,035.9
 Noise: 0.2

Peak table for sample 1 : IRS Soni 1 Cleanup 1:9

Peak	Size [bp]	Conc. [pg/µl]	Molarity [pmol/l]	Observations
1	35	125.00	5,411.3	Lower Marker
2	262	494.37	2,859.9	
3	267	67.04	380.1	
4	287	142.82	753.6	
5	297	116.97	596.1	
6	304	74.34	370.2	
7	315	102.17	492.2	
8	324	101.20	472.9	
9	333	106.01	481.8	
10	342	71.94	318.3	
11	360	68.32	287.9	
12	388	101.39	395.9	
13	414	123.45	451.2	
14	439	98.09	338.8	
15	452	74.51	250.0	
16	538	110.20	310.2	
17	570	76.90	204.3	
18	637	99.13	235.9	
19	682	163.78	363.8	
20	1,316	951.80	1,095.6	
21	1,621	240.58	224.8	
22	1,812	905.75	757.4	

Assay Class: High Sensitivity DNA Assay
 Data Path: C:\...ents and Settings\Bioanalyzer\2013-08-01\2013-08-01_001.xad


Created: 8/1/2013 9:47:36 AM
 Modified: 8/1/2013 10:43:31 AM

Electropherogram Summary Continued ...

... Peak table for sample 1 : IRS Soni 1 Cleanup 1:9

Peak	Size [bp]	Conc. [pg/ μ l]	Molarity [pmol/l]	Observations
23	6,855	23.99	5.3	
24	8,580	4.10	0.7	
25	10,380	75.00	10.9	Upper Marker

Region table for sample 1 : IRS Soni 1 Cleanup 1:9

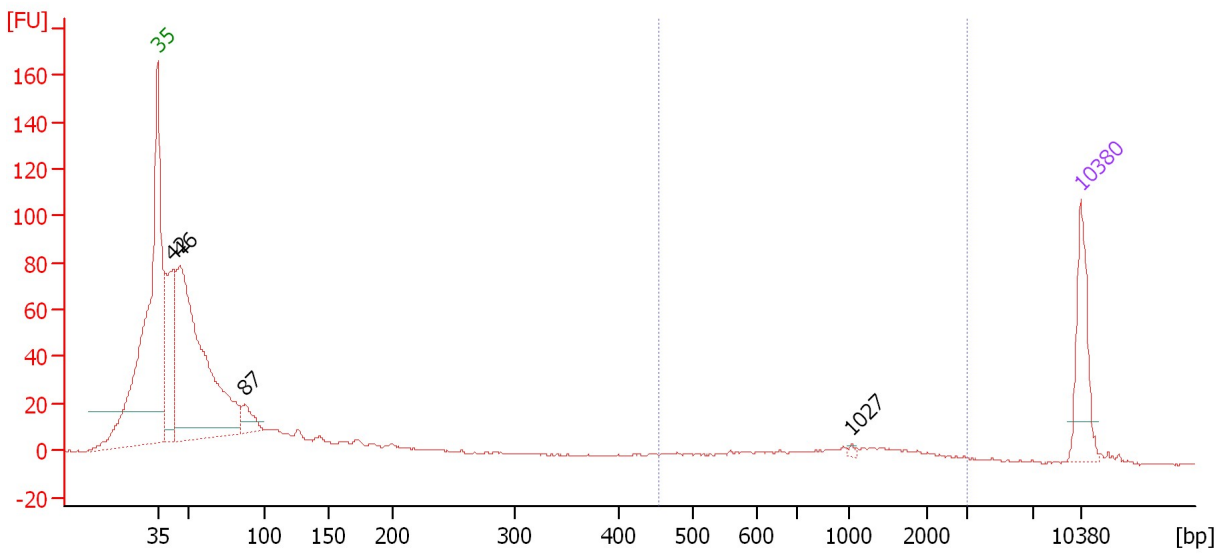
From [bp]	To [bp]	Average Size [bp]	Molarity [pmol/l]	Conc. [pg/ μ l]	Corr. Area	% of Total	Size distribution in CV [%]	Color
200	5,824	1,213	15,639.5	5,628.01	6,035.9	96	83.4	

Assay Class: High Sensitivity DNA Assay
 Data Path: C:\...ents and Settings\Bioanalyzer\2013-08-01\2013-08-01_001.xad

Created: 8/1/2013 9:47:36 AM
 Modified: 8/1/2013 10:43:31 AM

Electropherogram Summary Continued ...

PSH 1 Soni Cleanup 1:4 [12Cycl+Cleanup]



Overall Results for sample 2 : PSH 1 Soni Cleanup 1:4

Number of peaks found: 4 Corr. Area 1: 82.9
 Noise: 0.4

Peak table for sample 2 : PSH 1 Soni Cleanup 1:4

Peak	Size [bp]	Conc. [pg/µl]	Molarity [pmol/l]	Observations
1	35	125.00	5,411.3	Lower Marker
2	42	229.06	8,256.7	
3	46	709.96	23,464.2	
4	87	41.29	716.9	
5	1,027	2.79	4.1	
6	10,380	75.00	10.9	Upper Marker

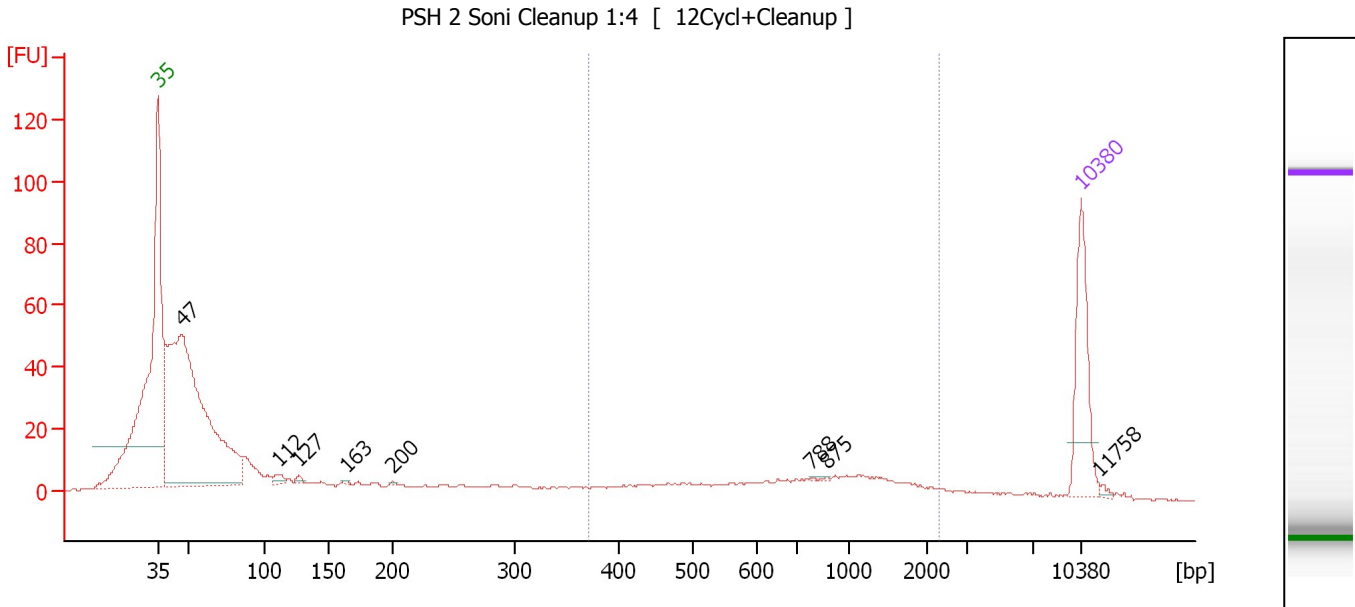
Region table for sample 2 : PSH 1 Soni Cleanup 1:4

From [bp]	To [bp]	Average Size [bp]	Molarity [pmol/l]	Conc. [pg/µl]	Corr. Area	% of Total	Size distribution in CV [%]	Color
454	3,097	1,131	143.9	79.37	82.9	9	52.8	Blue

Assay Class: High Sensitivity DNA Assay
 Data Path: C:\...ents and Settings\Bioanalyzer\2013-08-01\2013-08-01_001.xad

Created: 8/1/2013 9:47:36 AM
 Modified: 8/1/2013 10:43:31 AM

Electropherogram Summary Continued ...



Setpoint Deviations for sample 3 : PSH 2 Soni Cleanup 1:4

Height Threshold [FU] : 1

Overall Results for sample 3 : PSH 2 Soni Cleanup 1:4

Number of peaks found: 8 Corr. Area 1: 132.9
 Noise: 0.2

Peak table for sample 3 : PSH 2 Soni Cleanup 1:4

Peak	Size [bp]	Conc. [pg/µl]	Molarity [pmol/l]	Observations
1	35	125.00	5,411.3	Lower Marker
2	47	691.65	22,481.3	
3	112	9.23	125.4	
4	127	4.11	49.0	
5	163	1.78	16.5	
6	200	1.26	9.6	
7	788	0.69	1.3	
8	875	0.78	1.4	
9	10,380	75.00	10.9	Upper Marker
10	11,758	0.00	0.0	

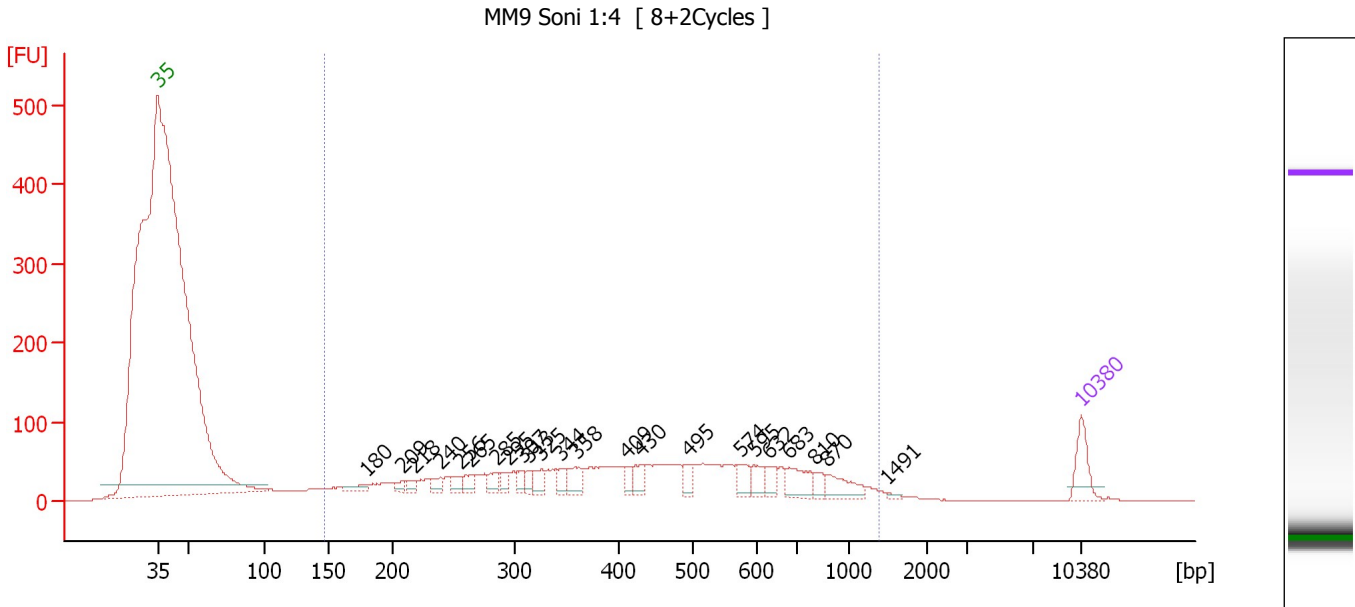
Region table for sample 3 : PSH 2 Soni Cleanup 1:4

From [bp]	To [bp]	Average Size [bp]	Molarity [pmol/l]	Conc. [pg/µl]	Corr. Area	% of Total	Size distribution in CV [%]	Color
371	2,287	882	333.5	145.19	132.9	19	52.0	Blue

Assay Class: High Sensitivity DNA Assay
 Data Path: C:\...ents and Settings\Bioanalyzer\2013-08-01\2013-08-01_001.xad

Created: 8/1/2013 9:47:36 AM
 Modified: 8/1/2013 10:43:31 AM

Electropherogram Summary Continued ...



Overall Results for sample 4 : MM9 Soni 1:4

Number of peaks found: 23 Corr. Area 1: 1,979.2
 Noise: 0.2

Peak table for sample 4 : MM9 Soni 1:4

Peak	Size [bp]	Conc. [pg/μl]	Molarity [pmol/l]	Observations
1	35	125.00	5,411.3	Lower Marker
2	180	33.71	284.2	
3	209	23.06	167.5	
4	218	26.70	185.8	
5	240	29.93	189.3	
6	256	34.64	205.1	
7	265	38.65	221.4	
8	285	42.51	226.0	
9	295	31.99	164.5	
10	307	32.94	162.7	
11	313	30.91	149.4	
12	325	43.05	200.9	
13	344	34.32	151.0	
14	358	64.78	274.0	
15	409	34.68	128.4	
16	430	45.09	159.0	
17	495	40.26	123.3	
18	574	52.14	137.5	
19	595	51.50	131.1	
20	632	39.83	95.5	
21	683	84.43	187.4	
22	810	28.85	54.0	
23	870	71.62	124.7	
24	1,491	7.01	7.1	
25	10,380	75.00	10.9	Upper Marker

Assay Class: High Sensitivity DNA Assay
Data Path: C:\...ents and Settings\Bioanalyzer\2013-08-01\2013-08-01_001.xad

Created: 8/1/2013 9:47:36 AM
Modified: 8/1/2013 10:43:31 AM

Electropherogram Summary Continued ...

... Region table for sample 4 : MM9 Soni 1:4

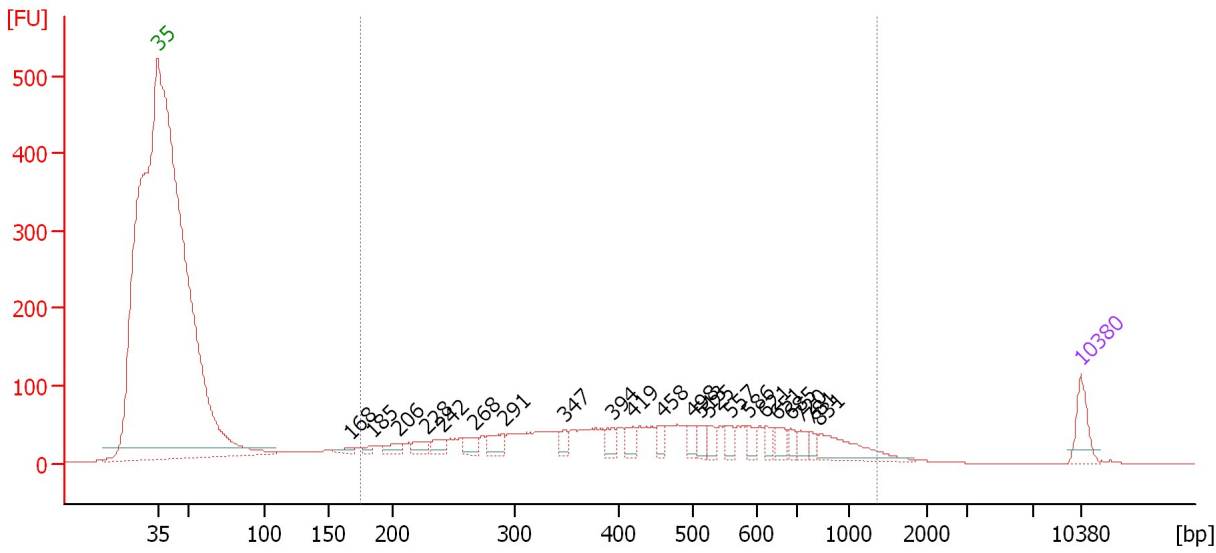
From [bp]	To [bp]	Average Size [bp]	Molarity [pmol/l]	Conc. [pg/μl]	Corr. Area	% of Total	Size distribution in CV [%]	Color
146	1,379	459	10,417.0	2,285.61	1,979.2	93	48.4	■

Assay Class: High Sensitivity DNA Assay
 Data Path: C:\...ents and Settings\Bioanalyzer\2013-08-01\2013-08-01_001.xad

Created: 8/1/2013 9:47:36 AM
 Modified: 8/1/2013 10:43:31 AM

Electropherogram Summary Continued ...

MM10 Soni 1:4 [8+2Cycles]



Overall Results for sample 5 : MM10 Soni 1:4

Number of peaks found: 22 Corr. Area 1: 2,001.0
 Noise: 0.2

Peak table for sample 5 : MM10 Soni 1:4

Peak	Size [bp]	Conc. [pg/μl]	Molarity [pmol/l]	Observations
1	35	125.00	5,411.3	Lower Marker
2	168	19.71	177.9	
3	185	15.26	125.1	
4	206	39.11	287.8	
5	228	45.72	303.2	
6	242	43.88	274.9	
7	268	46.74	264.2	
8	291	65.94	343.1	
9	347	37.06	161.8	
10	394	42.19	162.3	
11	419	45.58	164.9	
12	458	33.75	111.7	
13	498	36.30	110.4	
14	513	36.11	106.7	
15	525	40.33	116.5	
16	557	40.54	110.2	
17	586	38.95	100.7	
18	621	33.73	82.3	
19	651	41.80	97.2	
20	685	31.58	69.8	
21	720	33.54	70.5	
22	781	23.80	46.1	
23	831	137.98	251.4	
24	10,380	75.00	10.9	Upper Marker

Assay Class: High Sensitivity DNA Assay
Data Path: C:\...ents and Settings\Bioanalyzer\2013-08-01\2013-08-01_001.xad

Created: 8/1/2013 9:47:36 AM
Modified: 8/1/2013 10:43:31 AM

Electropherogram Summary Continued ...

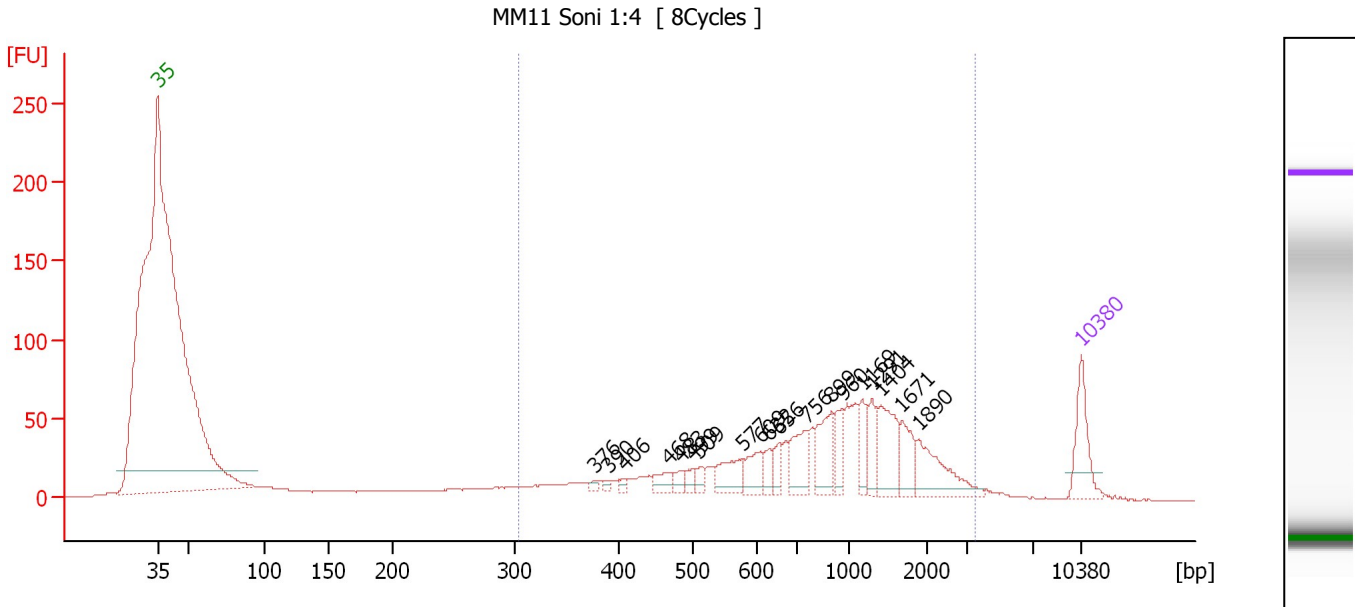
... Region table for sample 5 : MM10 Soni 1:4

From [bp]	To [bp]	Average Size [bp]	Molarity [pmol/l]	Conc. [pg/μl]	Corr. Area	% of Total	Size distribution in CV [%]	Color
175	1,357	473	9,355.8	2,198.49	2,001.0	89	46.5	■

Assay Class: High Sensitivity DNA Assay
 Data Path: C:\...ents and Settings\Bioanalyzer\2013-08-01\2013-08-01_001.xad

Created: 8/1/2013 9:47:36 AM
 Modified: 8/1/2013 10:43:31 AM

Electropherogram Summary Continued ...



Overall Results for sample 6 : MM11 Soni 1:4

Number of peaks found: 19 Corr. Area 1: 1,062.4
 Noise: 0.2

Peak table for sample 6 : MM11 Soni 1:4

Peak	Size [bp]	Conc. [pg/μl]	Molarity [pmol/l]	Observations
1	35	125.00	5,411.3	Lower Marker
2	376	9.49	38.2	
3	390	9.05	35.1	
4	406	9.50	35.4	
5	468	29.26	94.8	
6	483	18.60	58.4	
7	499	17.98	54.6	
8	509	19.39	57.7	
9	577	60.67	159.4	
10	609	52.12	129.6	
11	632	23.95	57.4	
12	656	30.86	71.3	
13	756	76.14	152.7	
14	899	81.68	137.6	
15	960	40.01	63.1	
16	1,169	44.88	58.2	
17	1,291	46.62	54.7	
18	1,404	99.41	107.3	
19	1,671	52.58	47.7	
20	1,890	93.59	75.0	
21	10,380	75.00	10.9	Upper Marker

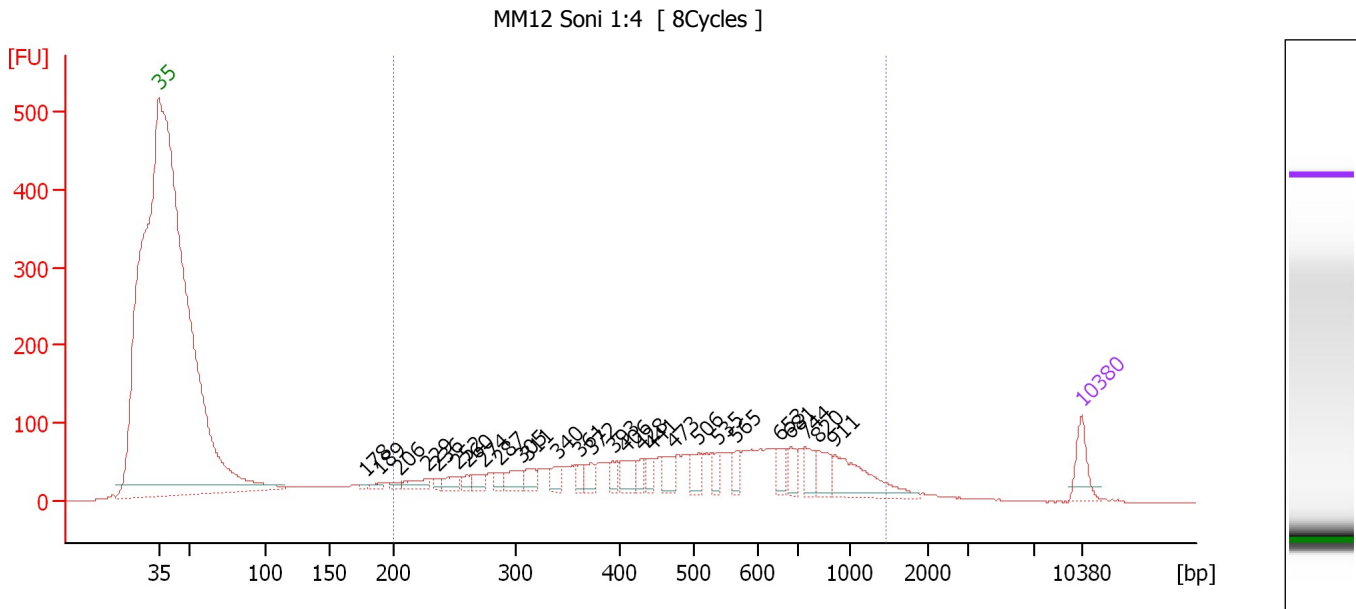
Region table for sample 6 : MM11 Soni 1:4

From [bp]	To [bp]	Average Size [bp]	Molarity [pmol/l]	Conc. [pg/μl]	Corr. Area	% of Total	Size distribution in CV [%]	Color
303	3,494	1,032	2,679.6	1,234.58	1,062.4	84	57.7	Blue

Assay Class: High Sensitivity DNA Assay
 Data Path: C:\...ents and Settings\Bioanalyzer\2013-08-01\2013-08-01_001.xad

Created: 8/1/2013 9:47:36 AM
 Modified: 8/1/2013 10:43:31 AM

Electropherogram Summary Continued ...



Overall Results for sample 7 : MM12 Soni 1:4

Number of peaks found: 27 Corr. Area 1: 2,354.3
 Noise: 0.3

Peak table for sample 7 : MM12 Soni 1:4

Peak	Size [bp]	Conc. [pg/μl]	Molarity [pmol/l]	Observations
1	35	125.00	5,411.3	Lower Marker
2	178	8.01	68.2	
3	189	16.43	131.4	
4	206	17.56	129.3	
5	229	50.33	333.6	
6	236	19.58	125.7	
7	252	46.29	278.3	
8	260	27.94	162.6	
9	274	44.64	247.0	
10	287	28.42	150.1	
11	305	70.23	349.2	
12	311	51.90	253.0	
13	340	44.70	199.5	
14	361	35.72	149.9	
15	372	50.16	204.3	
16	393	37.72	145.5	
17	406	70.97	264.8	
18	428	39.17	138.8	
19	441	40.63	139.5	
20	473	61.65	197.7	
21	506	60.94	182.4	
22	535	43.94	124.3	
23	565	43.35	116.3	
24	653	56.15	130.2	
25	681	56.58	125.9	
26	744	67.75	138.0	

Assay Class: High Sensitivity DNA Assay
 Data Path: C:\...ents and Settings\Bioanalyzer\2013-08-01\2013-08-01_001.xad

Created: 8/1/2013 9:47:36 AM
 Modified: 8/1/2013 10:43:31 AM

Electropherogram Summary Continued ...

... Peak table for sample 7 : MM12 Soni 1:4

Peak	Size [bp]	Conc. [pg/μl]	Molarity [pmol/l]	Observations
27	820	75.93	140.2	
28	911	189.21	314.7	
29	10,380	75.00	10.9	Upper Marker

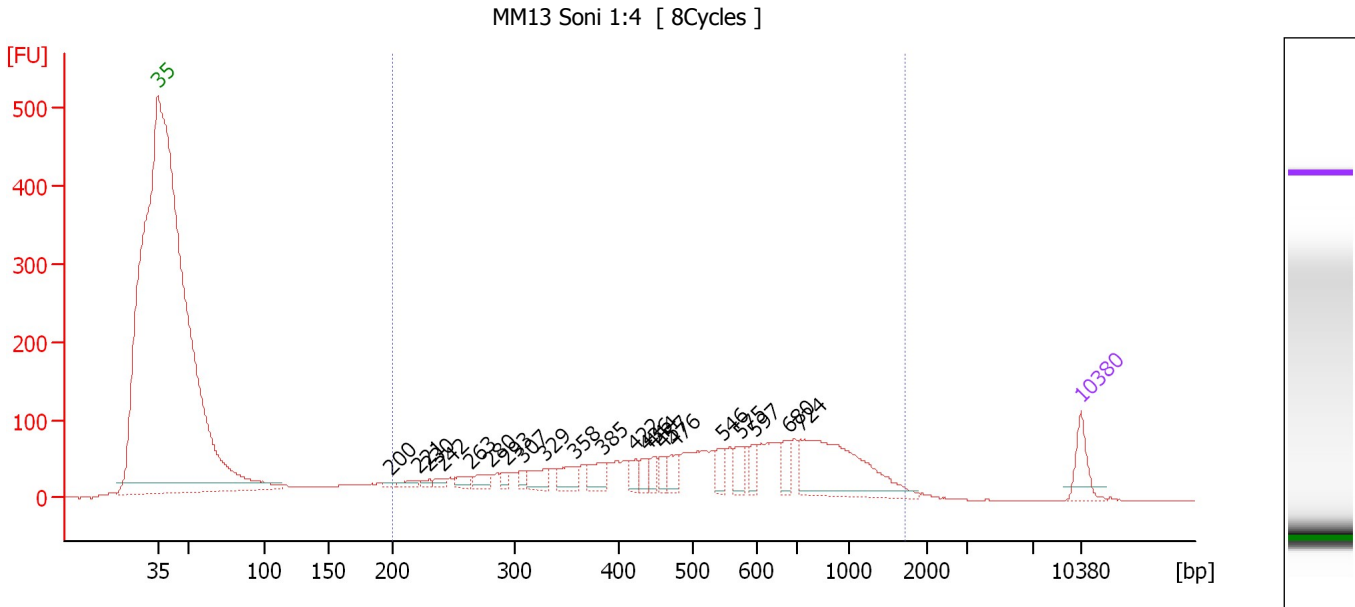
Region table for sample 7 : MM12 Soni 1:4

From [bp]	To [bp]	Average Size [bp]	Molarity [pmol/l]	Conc. [pg/μl]	Corr. Area	% of Total	Size distribution in CV [%]	Color
200	1,454	532	10,162.3	2,704.17	2,354.3	85	46.6	■

Assay Class: High Sensitivity DNA Assay
 Data Path: C:\...ents and Settings\Bioanalyzer\2013-08-01\2013-08-01_001.xad

Created: 8/1/2013 9:47:36 AM
 Modified: 8/1/2013 10:43:31 AM

Electropherogram Summary Continued ...



Overall Results for sample 8 : MM13 Soni 1:4

Number of peaks found: 21 Corr. Area 1: 2,334.0
 Noise: 0.2

Peak table for sample 8 : MM13 Soni 1:4

Peak	Size [bp]	Conc. [pg/μl]	Molarity [pmol/l]	Observations
1	35	125.00	5,411.3	Lower Marker
2	200	10.38	78.8	
3	221	23.16	158.5	
4	230	15.97	105.0	
5	242	23.16	145.1	
6	263	34.13	196.4	
7	280	42.76	231.3	
8	293	22.78	118.0	
9	307	24.87	122.6	
10	329	65.27	300.2	
11	358	76.73	325.1	
12	385	74.59	293.8	
13	422	40.25	144.6	
14	436	44.33	154.2	
15	444	37.46	127.7	
16	457	41.32	136.9	
17	476	54.91	175.0	
18	546	56.33	156.2	
19	575	60.94	160.7	
20	597	47.78	121.3	
21	680	64.32	143.3	
22	724	456.08	953.8	
23	10,380	75.00	10.9	Upper Marker

Assay Class: High Sensitivity DNA Assay
Data Path: C:\...ents and Settings\Bioanalyzer\2013-08-01\2013-08-01_001.xad

Created: 8/1/2013 9:47:36 AM
Modified: 8/1/2013 10:43:31 AM

Electropherogram Summary Continued ...

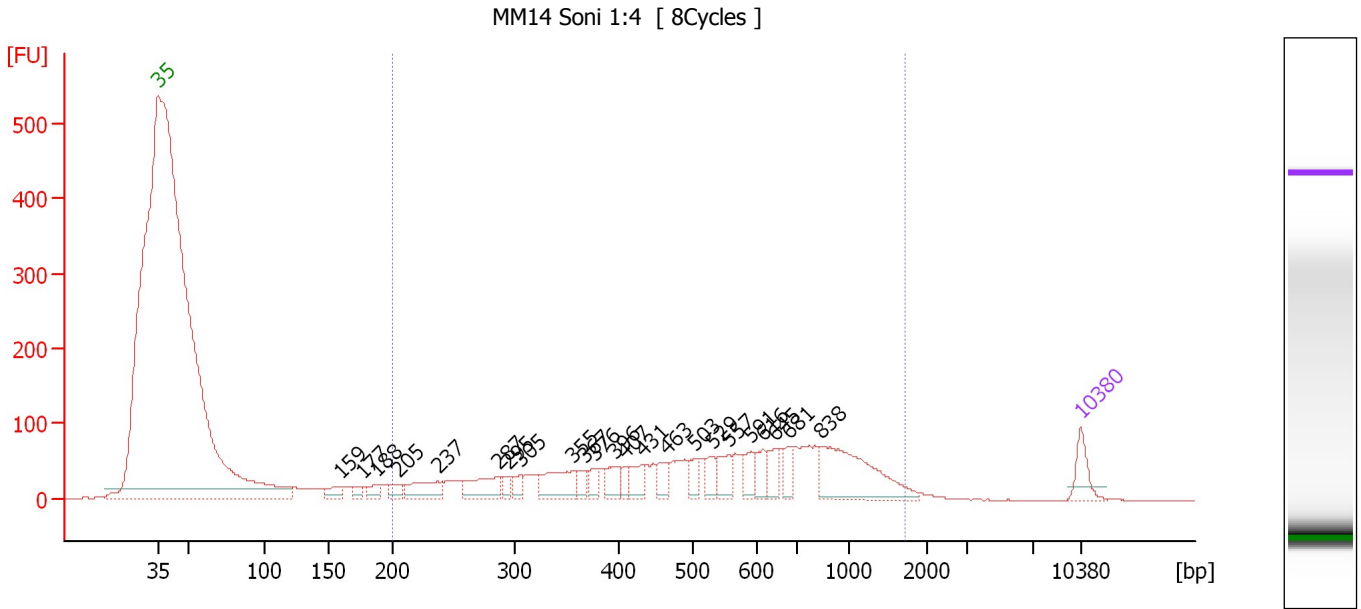
... Region table for sample 8 : MM13 Soni 1:4

From [bp]	To [bp]	Average Size [bp]	Molarity [pmol/l]	Conc. [pg/μl]	Corr. Area	% of Total	Size distribution in CV [%]	Color
200	1,715	580	8,789.8	2,464.49	2,334.0	88	50.3	■

Assay Class: High Sensitivity DNA Assay
 Data Path: C:\...ents and Settings\Bioanalyzer\2013-08-01\2013-08-01_001.xad

Created: 8/1/2013 9:47:36 AM
 Modified: 8/1/2013 10:43:31 AM

Electropherogram Summary Continued ...



Overall Results for sample 9 : MM14 Soni 1:4

Number of peaks found: 23 Corr. Area 1: 2,128.9
 Noise: 0.2

Peak table for sample 9 : MM14 Soni 1:4

Peak	Size [bp]	Conc. [pg/μl]	Molarity [pmol/l]	Observations
1	35	125.00	5,411.3	Lower Marker
2	159	58.09	554.6	
3	177	39.77	340.4	
4	188	52.32	421.2	
5	205	52.10	384.8	
6	237	145.06	926.5	
7	287	157.68	833.5	
8	295	37.85	194.7	
9	305	50.68	251.5	
10	355	175.61	750.2	
11	367	54.33	224.3	
12	376	52.56	211.6	
13	396	73.50	281.2	
14	407	43.56	162.3	
15	431	81.31	285.9	
16	463	72.61	237.5	
17	503	58.08	175.0	
18	529	74.12	212.2	
19	557	92.59	252.0	
20	591	66.52	170.4	
21	616	72.59	178.7	
22	645	71.03	166.8	
23	681	57.51	127.9	
24	838	405.26	733.1	
25	10,380	75.00	10.9	Upper Marker

Assay Class: High Sensitivity DNA Assay
Data Path: C:\...ents and Settings\Bioanalyzer\2013-08-01\2013-08-01_001.xad

Created: 8/1/2013 9:47:36 AM
Modified: 8/1/2013 10:43:31 AM

Electropherogram Summary Continued ...

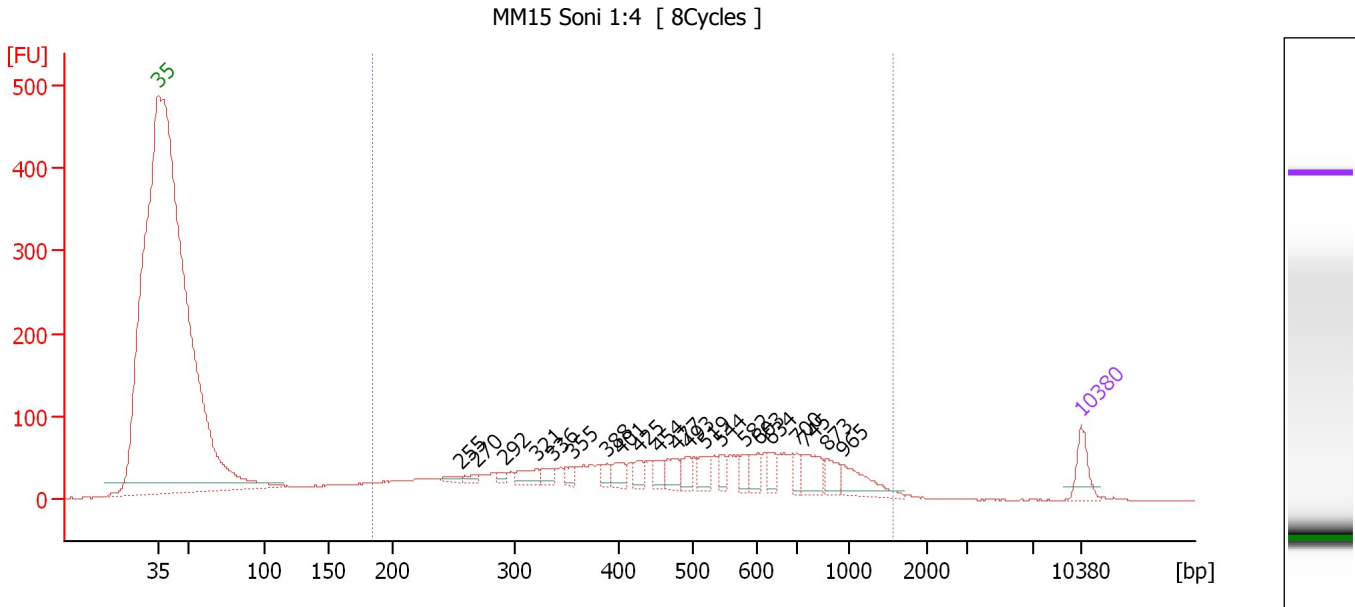
... Region table for sample 9 : MM14 Soni 1:4

From [bp]	To [bp]	Average Size [bp]	Molarity [pmol/l]	Conc. [pg/μl]	Corr. Area	% of Total	Size distribution in CV [%]	Color
200	1,711	594	9,164.2	2,598.74	2,128.9	89	51.0	■

Assay Class: High Sensitivity DNA Assay
 Data Path: C:\...ents and Settings\Bioanalyzer\2013-08-01\2013-08-01_001.xad

Created: 8/1/2013 9:47:36 AM
 Modified: 8/1/2013 10:43:31 AM

Electropherogram Summary Continued ...



Overall Results for sample 10 : MM15 Soni 1:4

Number of peaks found: 21 Corr. Area 1: 1,979.6
 Noise: 0.1

Peak table for sample 10 : MM15 Soni 1:4

Peak	Size [bp]	Conc. [pg/μl]	Molarity [pmol/l]	Observations
1	35	125.00	5,411.3	Lower Marker
2	255	24.06	142.7	
3	270	23.27	130.7	
4	292	25.21	130.9	
5	321	67.75	319.9	
6	336	44.26	199.4	
7	355	33.99	145.1	
8	388	36.36	142.0	
9	401	57.40	216.7	
10	425	43.04	153.4	
11	454	44.96	150.1	
12	477	70.43	223.8	
13	493	55.36	170.3	
14	519	59.77	174.5	
15	544	41.51	115.5	
16	582	52.82	137.4	
17	603	53.13	133.5	
18	634	45.96	109.8	
19	700	43.29	93.7	
20	745	109.57	223.0	
21	873	65.87	114.3	
22	965	112.44	176.5	
23	10,380	75.00	10.9	Upper Marker

Assay Class: High Sensitivity DNA Assay
Data Path: C:\...ents and Settings\Bioanalyzer\2013-08-01\2013-08-01_001.xad

Created: 8/1/2013 9:47:36 AM
Modified: 8/1/2013 10:43:31 AM

Electropherogram Summary Continued ...

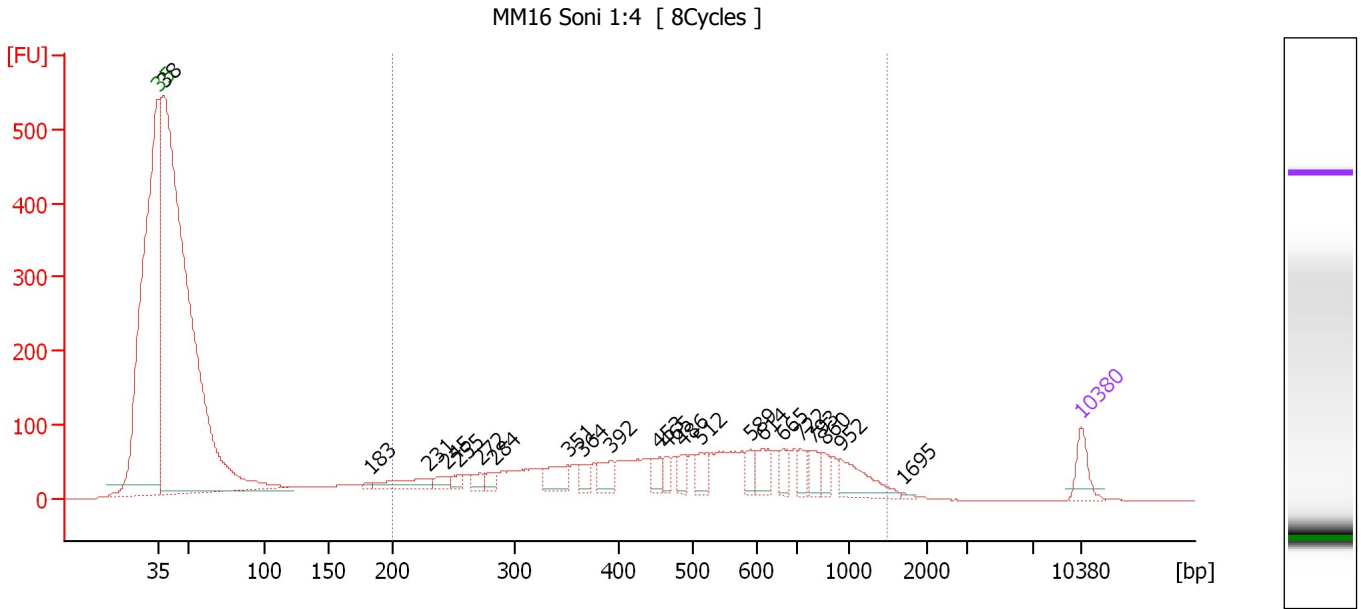
... Region table for sample 10 : **MM15 Soni 1:4**

From [bp]	To [bp]	Average Size [bp]	Molarity [pmol/l]	Conc. [pg/μl]	Corr. Area	% of Total	Size distribution in CV [%]	Color
185	1,564	522	10,485.6	2,678.87	1,979.6	89	48.3	■

Assay Class: High Sensitivity DNA Assay
 Data Path: C:\...ents and Settings\Bioanalyzer\2013-08-01\2013-08-01_001.xad

Created: 8/1/2013 9:47:36 AM
 Modified: 8/1/2013 10:43:31 AM

Electropherogram Summary Continued ...



Overall Results for sample 11 : MM16 Soni 1:4

Number of peaks found: 22 Corr. Area 1: 2,299.6
 Noise: 0.2

Peak table for sample 11 : MM16 Soni 1:4


Peak	Size [bp]	Conc. [pg/μl]	Molarity [pmol/l]	Observations
1	35	125.00	5,411.3	Lower Marker
2	38	5,492.34	219,953.5	
3	183	11.15	92.5	
4	231	107.32	705.3	
5	245	44.72	276.6	
6	255	34.04	202.7	
7	272	43.36	242.0	
8	284	43.77	233.3	
9	351	109.23	471.5	
10	364	52.10	216.8	
11	392	84.12	324.9	
12	453	62.53	208.9	
13	465	44.09	143.7	
14	486	52.93	165.0	
15	512	76.00	225.1	
16	589	49.44	127.2	
17	614	92.34	228.0	
18	665	65.32	148.8	
19	722	50.42	105.8	
20	793	64.14	122.6	
21	860	39.83	70.2	
22	952	135.42	215.5	
23	1,695	5.27	4.7	
24	10,380	75.00	10.9	Upper Marker

Assay Class: High Sensitivity DNA Assay
Data Path: C:\...ents and Settings\Bioanalyzer\2013-08-01\2013-08-01_001.xad

Created: 8/1/2013 9:47:36 AM
Modified: 8/1/2013 10:43:31 AM

Electropherogram Summary Continued ...

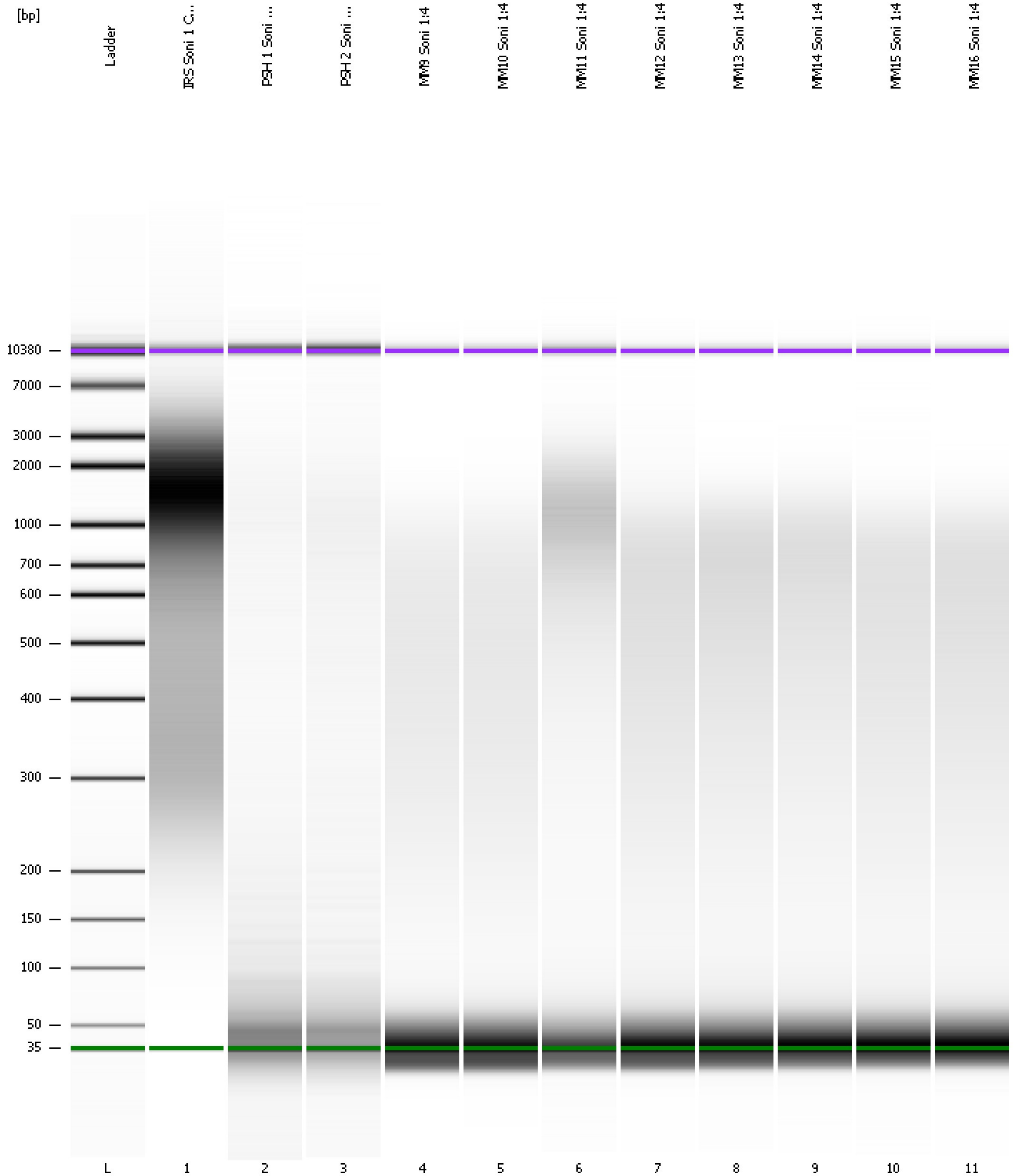
... Region table for sample 11 : **MM16 Soni 1:4**

From [bp]	To [bp]	Average Size [bp]	Molarity [pmol/l]	Conc. [pg/μl]	Corr. Area	% of Total	Size distribution in CV [%]	Color
200	1,476	530	9,911.2	2,636.02	2,299.6	39	46.3	

Assay Class: High Sensitivity DNA Assay
Data Path: C:\...ents and Settings\Bioanalyzer\2013-08-01\2013-08-01_001.xad

Created: 8/1/2013 9:47:36 AM
Modified: 8/1/2013 10:43:31 AM

Gel Image



Assay Class: High Sensitivity DNA Assay
 Data Path: C:\...ents and Settings\Bioanalyzer\2013-08-01\2013-08-01_001.xad

Created: 8/1/2013 9:47:36 AM
 Modified: 8/1/2013 10:43:31 AM

Run Logbook

Description	Number	Source	Category	Sub Category	Time	Time Zone	User	Host
Run ended on port 1 (Number of wells acquired: 12)		Instrument	Run		8/1/2013 10:28:56 AM	(GMT --07:00) Pacific Standard Time	UC Davis	D8XSMGH1
Run started on port 1 (File: C:\Documents and Settings\Bioanalyzer\2013-08-01\2013-08-01_001.xad)		Instrument	Run		8/1/2013 9:47:42 AM	(GMT --07:00) Pacific Standard Time	UC Davis	D8XSMGH1
Product Number : G2938B		Instrument	Run		8/1/2013 9:47:42 AM	(GMT --07:00) Pacific Standard Time	UC Davis	D8XSMGH1
Name :		Instrument	Run		8/1/2013 9:47:42 AM	(GMT --07:00) Pacific Standard Time	UC Davis	D8XSMGH1
Vendor : Agilent Technologies		Instrument	Run		8/1/2013 9:47:42 AM	(GMT --07:00) Pacific Standard Time	UC Davis	D8XSMGH1
Serial# : DE13701086		Instrument	Run		8/1/2013 9:47:42 AM	(GMT --07:00) Pacific Standard Time	UC Davis	D8XSMGH1
Firmware : C.01.069		Instrument	Run		8/1/2013 9:47:42 AM	(GMT --07:00) Pacific Standard Time	UC Davis	D8XSMGH1
Cartridge : Electrode		Instrument	Run		8/1/2013 9:47:42 AM	(GMT --07:00) Pacific Standard Time	UC Davis	D8XSMGH1