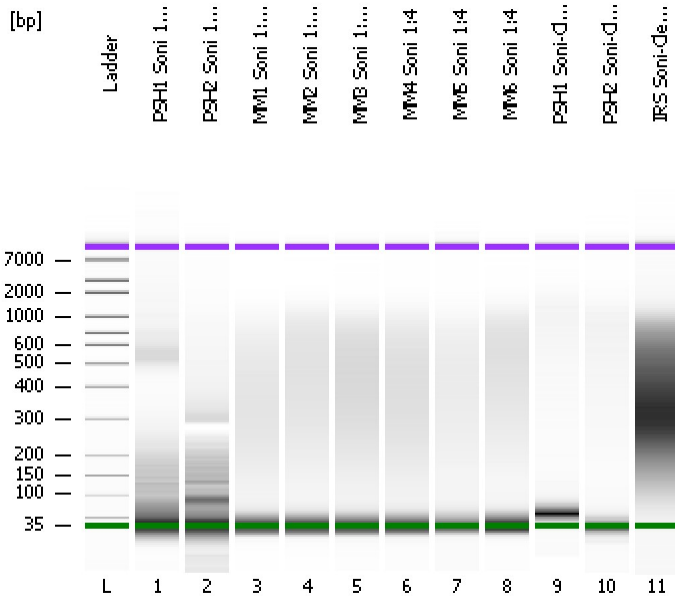


Assay Class: High Sensitivity DNA Assay
Data Path: C:\...ents and Settings\Bioanalyzer\2013-08-05\2013-08-05_005.xad

Created: 8/5/2013 5:09:20 PM
Modified: 8/5/2013 5:52:55 PM

Electrophoresis File Run Summary



Instrument Information:

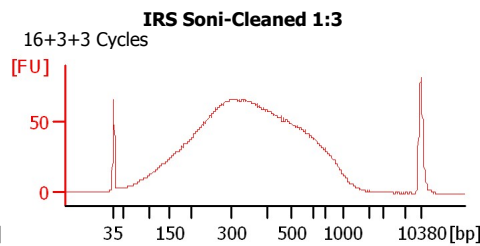
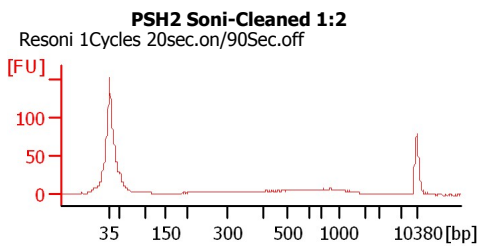
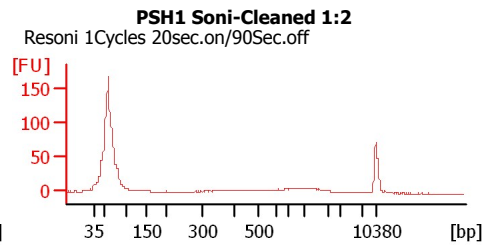
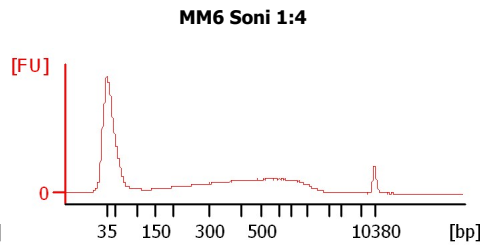
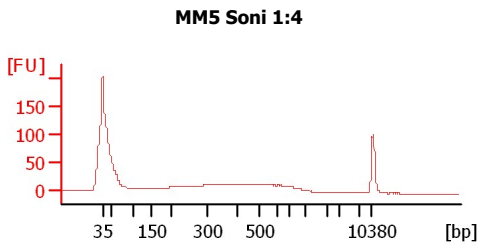
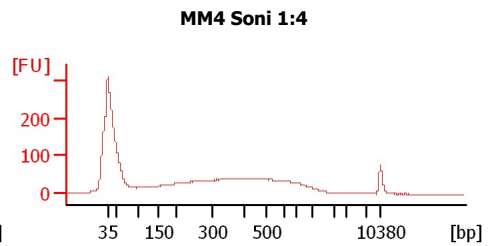
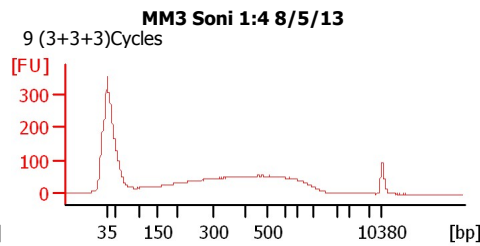
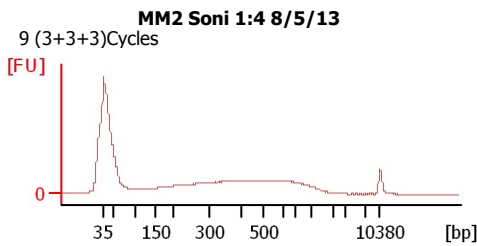
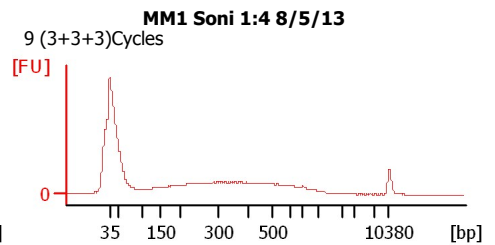
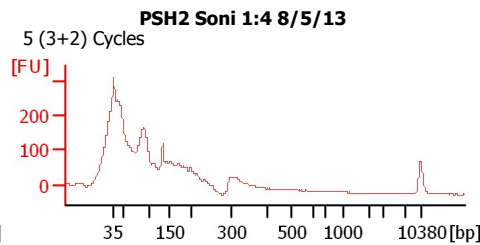
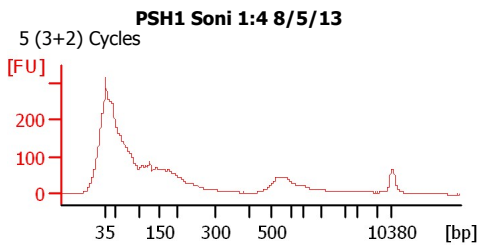
Instrument Name: DE13701086 Firmware: C.01.069
Serial#: DE13701086 Type: G2938B

Assay Information:

Assay Origin Path: C:\Program Files\Agilent\2100 bioanalyzer\2100 expert\assays\dsDNA\High Sensitivity DNA.xsy
Assay Class: High Sensitivity DNA Assay
Version: 1.03
Assay Comments: Copyright © 2003-2010 Agilent Technologies

Chip Information:

Chip Lot #:
Reagent Kit Lot #:
Chip Comments:



Assay Class: High Sensitivity DNA Assay
 Data Path: C:\...ents and Settings\Bioanalyzer\2013-08-05\2013-08-05_005.xad

Created: 8/5/2013 5:09:20 PM
 Modified: 8/5/2013 5:52:55 PM

Electrophoresis File Run Summary (Chip Summary)

Sample Name	Sample Comment	Rest. Digest	Status	Observation	Result Label	Result Color
PSH1 Soni 1:4 8/5/13	5 (3+2) Cycles	<input type="checkbox"/>	✓			
PSH2 Soni 1:4 8/5/13	5 (3+2) Cycles	<input type="checkbox"/>	✓			
MM1 Soni 1:4 8/5/13	9 (3+3+3)Cycles	<input type="checkbox"/>	✓			
MM2 Soni 1:4 8/5/13	9 (3+3+3)Cycles	<input type="checkbox"/>	✓			
MM3 Soni 1:4 8/5/13	9 (3+3+3)Cycles	<input type="checkbox"/>	✓			
MM4 Soni 1:4		<input type="checkbox"/>	✓			
MM5 Soni 1:4		<input type="checkbox"/>	✓			
MM6 Soni 1:4		<input type="checkbox"/>	✓			
PSH1 Soni-Cleaned 1:2	Resoni 1Cycles 20sec.on/90Sec.off	<input type="checkbox"/>	✓			
PSH2 Soni-Cleaned 1:2	Resoni 1Cycles 20sec.on/90Sec.off	<input type="checkbox"/>	✓			
IRS Soni-Cleaned 1:3	16+3+3 Cycles	<input type="checkbox"/>	✓			
Ladder		<input type="checkbox"/>	✓			

Chip Lot #

Reagent Kit Lot #

Chip Comments :

Assay Class: High Sensitivity DNA Assay
Data Path: C:\...ents and Settings\Bioanalyzer\2013-08-05\2013-08-05_005.xad

Created: 8/5/2013 5:09:20 PM
Modified: 8/5/2013 5:52:55 PM

Electrophoresis Assay Details

General Analysis Settings

Number of Available Sample and Ladder Wells (Max.) : 12
Minimum Visible Range [s] : 32
Maximum Visible Range [s] : 138
Start Analysis Time Range [s] : 33
End Analysis Time Range [s] : 137.5
Ladder Concentration [pg/μl] : 1950
Uses Standard Area for Ladder Fragments
Lower Marker Concentration [pg/μl] : 125
Upper Marker Concentration [pg/μl] : 75
Used Upper Marker for Quantitation
Standard Curve Fit is Point to Point
Show Data Aligned to Lower and Upper Marker

Integrator Settings

Integration Start Time [s] : 33.05
Integration End Time [s] : 137
Slope Threshold : 0.8
Height Threshold [FU] : 5
Area Threshold : 0.1
Width Threshold [s] : 0.6
Baseline Plateau [s] : 0.5

Filter Settings

Filter Width [s] : 0.5
Polynomial Order : 4

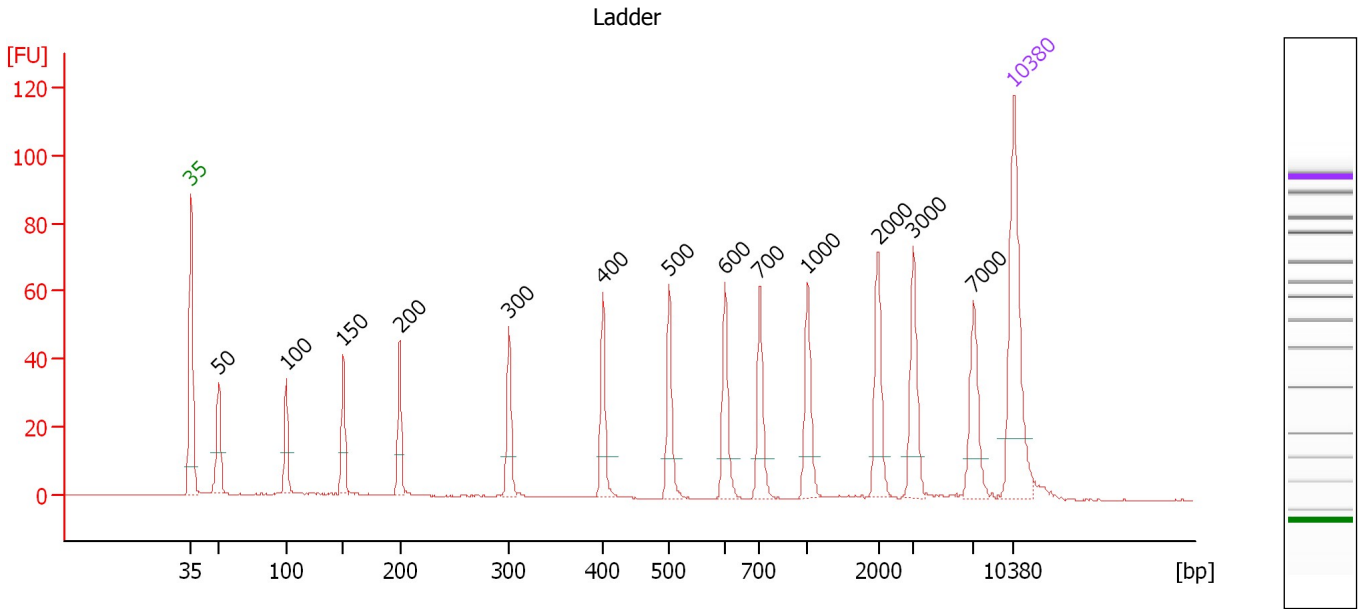
Ladder

Ladder Peak	Size	Area
1	35	160
2	50	210
3	100	208
4	150	221
5	200	242
6	300	270
7	400	305
8	500	306
9	600	336
10	700	321
11	1000	366
12	2000	413
13	3000	411
14	7000	400
15	10380	214

Assay Class: High Sensitivity DNA Assay
 Data Path: C:\...ents and Settings\Bioanalyzer\2013-08-05\2013-08-05_005.xad

Created: 8/5/2013 5:09:20 PM
 Modified: 8/5/2013 5:52:55 PM

Electropherogram Summary



Overall Results for Ladder

Noise: 0.1

Peak table for Ladder

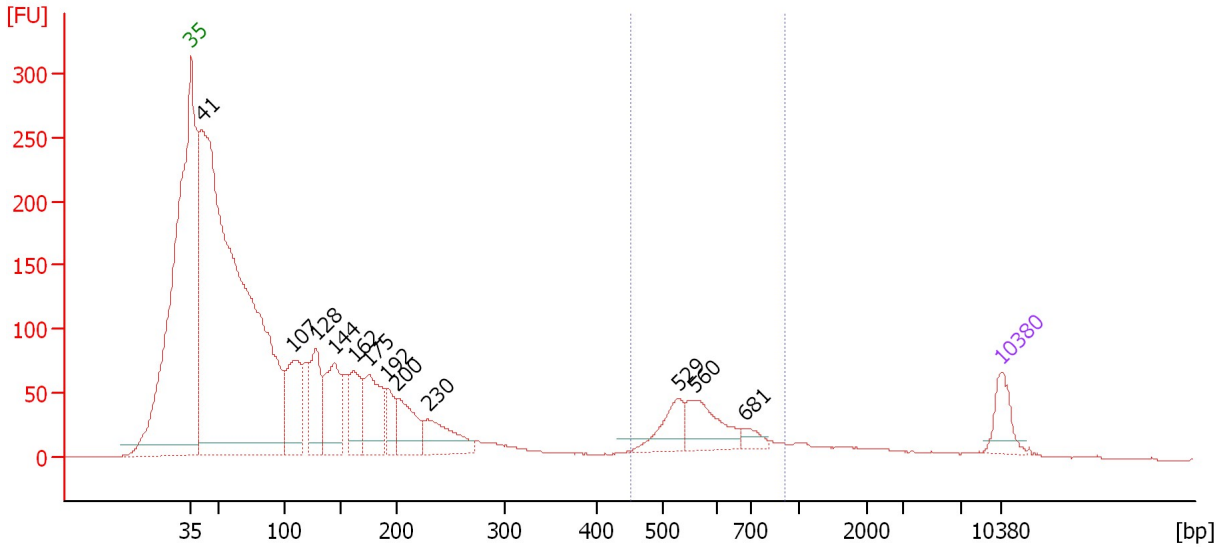
Peak	Size [bp]	Conc. [pg/μl]	Molarity [pmol/l]	Observations
1	35	125.00	5,411.3	Lower Marker
2	50	150.00	4,545.5	Ladder Peak
3	100	150.00	2,272.7	Ladder Peak
4	150	150.00	1,515.2	Ladder Peak
5	200	150.00	1,136.4	Ladder Peak
6	300	150.00	757.6	Ladder Peak
7	400	150.00	568.2	Ladder Peak
8	500	150.00	454.5	Ladder Peak
9	600	150.00	378.8	Ladder Peak
10	700	150.00	324.7	Ladder Peak
11	1,000	150.00	227.3	Ladder Peak
12	2,000	150.00	113.6	Ladder Peak
13	3,000	150.00	75.8	Ladder Peak
14	7,000	150.00	32.5	Ladder Peak
15	10,380	75.00	10.9	Upper Marker

Assay Class: High Sensitivity DNA Assay
 Data Path: C:\...ents and Settings\Bioanalyzer\2013-08-05\2013-08-05_005.xad

Created: 8/5/2013 5:09:20 PM
 Modified: 8/5/2013 5:52:55 PM

Electropherogram Summary Continued ...

PSH1 Soni 1:4 8/5/13 [5 (3+2) Cycles]



Setpoint Deviations for sample 1 : PSH1 Soni 1:4 8/5/13

Height Threshold [FU] : 10

Overall Results for sample 1 : PSH1 Soni 1:4 8/5/13

Number of peaks found: 12 Corr. Area 1: 416.3
 Noise: 0.1

Peak table for sample 1 : PSH1 Soni 1:4 8/5/13

Peak	Size [bp]	Conc. [pg/μl]	Molarity [pmol/l]	Observations
1	35	125.00	5,411.3	Lower Marker
2	41	4,584.25	169,528.7	
3	107	364.68	5,143.5	
4	128	279.26	3,310.3	
5	144	321.14	3,380.1	
6	162	227.65	2,134.3	
7	175	282.56	2,446.2	
8	192	107.04	845.7	
9	200	192.20	1,453.1	
10	230	188.72	1,245.2	
11	529	127.97	366.3	
12	560	174.01	470.6	
13	681	36.37	80.9	
14	10,380	75.00	10.9	Upper Marker

Region table for sample 1 : PSH1 Soni 1:4 8/5/13

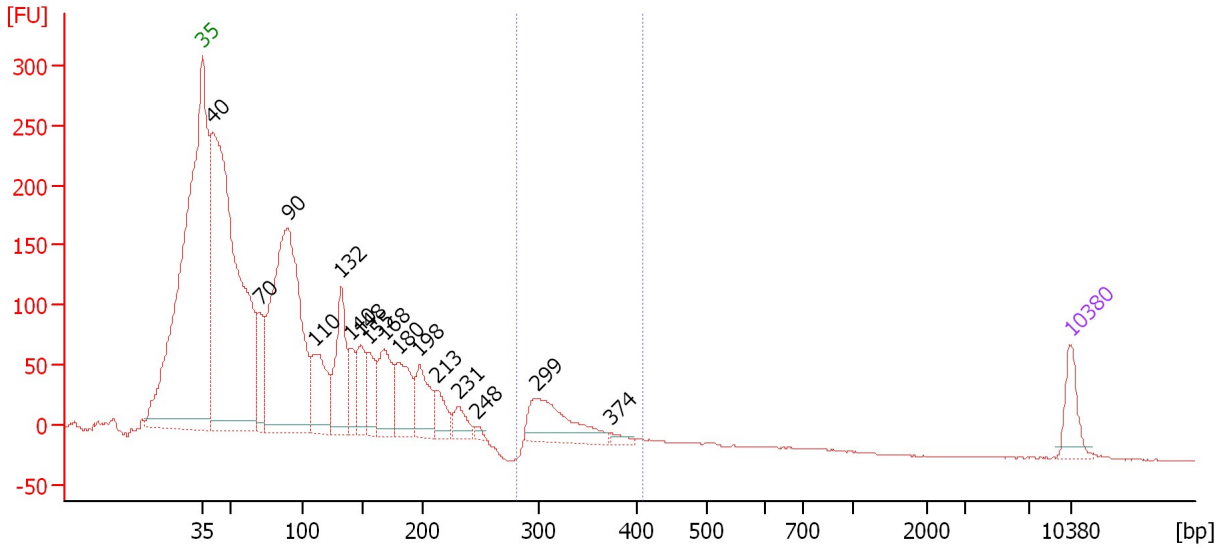
From [bp]	To [bp]	Average Size [bp]	Molarity [pmol/l]	Conc. [pg/μl]	Corr. Area	% of Total	Size distribution in CV [%]	Color
454	910	594	1,180.9	450.50	416.3	9	16.1	Blue

Assay Class: High Sensitivity DNA Assay
 Data Path: C:\...ents and Settings\Bioanalyzer\2013-08-05\2013-08-05_005.xad

Created: 8/5/2013 5:09:20 PM
 Modified: 8/5/2013 5:52:55 PM

Electropherogram Summary Continued ...

PSH2 Soni 1:4 8/5/13 [5 (3+2) Cycles]



Setpoint Deviations for sample 2 : PSH2 Soni 1:4 8/5/13

Height Threshold [FU] : 7

Overall Results for sample 2 : PSH2 Soni 1:4 8/5/13

Number of peaks found: 16 Corr. Area 1: 188.6
 Noise: 0.2

Peak table for sample 2 : PSH2 Soni 1:4 8/5/13

Peak	Size [bp]	Conc. [pg/μl]	Molarity [pmol/l]	Observations
1	35	125.00	5,411.3	Lower Marker
2	40	2,463.93	92,705.3	
3	70	204.91	4,424.5	
4	90	1,477.49	24,964.1	
5	110	300.40	4,141.3	
6	132	339.02	3,889.4	
7	140	123.58	1,333.2	
8	148	169.18	1,734.0	
9	155	134.24	1,310.0	
10	168	240.89	2,176.5	
11	180	221.23	1,861.0	
12	198	183.22	1,405.4	
13	213	96.82	689.2	
14	231	72.51	475.9	
15	248	16.55	101.2	
16	299	262.43	1,328.8	
17	374	21.94	88.9	
18	10,380	75.00	10.9	Upper Marker

Region table for sample 2 : PSH2 Soni 1:4 8/5/13

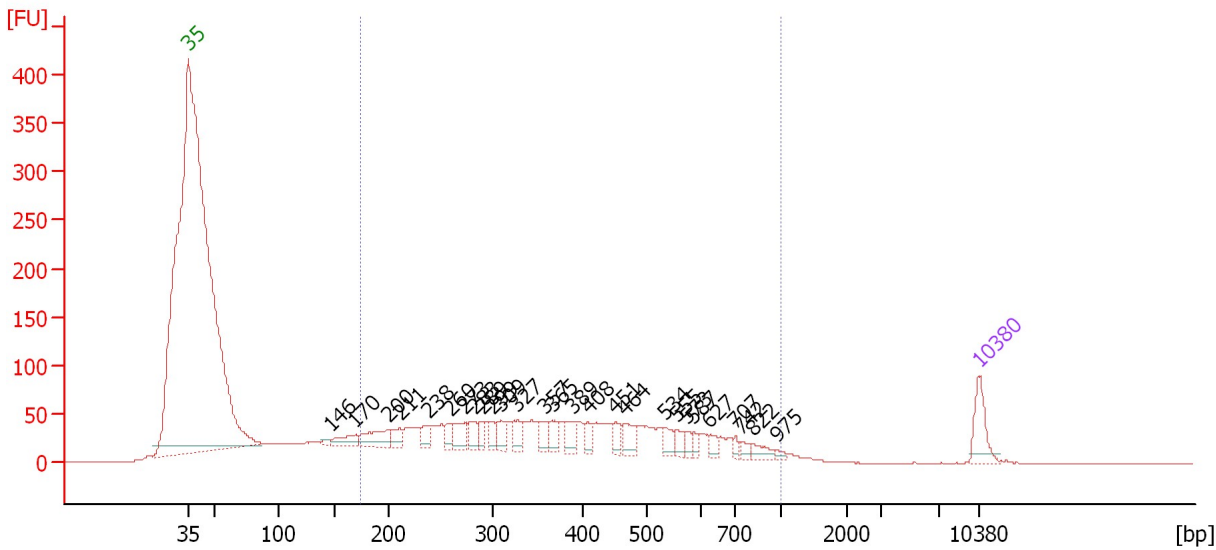
From [bp]	To [bp]	Average Size [bp]	Molarity [pmol/l]	Conc. [pg/μl]	Corr. Area	% of Total	Size distribution in CV [%]	Color
281	409	323	1,052.9	223.74	188.6	5	8.1	Blue

Assay Class: High Sensitivity DNA Assay
 Data Path: C:\...ents and Settings\Bioanalyzer\2013-08-05\2013-08-05_005.xad

Created: 8/5/2013 5:09:20 PM
 Modified: 8/5/2013 5:52:55 PM

Electropherogram Summary Continued ...

MM1 Soni 1:4 8/5/13 [9 (3+3+3)Cycles]



Overall Results for sample 3 : MM1 Soni 1:4 8/5/13

Number of peaks found: 27 Corr. Area 1: 1,824.7
 Noise: 0.2

Peak table for sample 3 : MM1 Soni 1:4 8/5/13

Peak	Size [bp]	Conc. [pg/μl]	Molarity [pmol/l]	Observations
1	35	125.00	5,411.3	Lower Marker
2	146	13.29	137.7	
3	170	60.37	538.8	
4	200	103.55	785.5	
5	211	46.66	335.2	
6	238	45.91	291.9	
7	260	38.75	226.1	
8	273	68.52	380.5	
9	283	50.86	272.8	
10	289	35.40	185.5	
11	299	37.77	191.6	
12	309	51.48	252.3	
13	327	50.71	235.0	
14	357	48.52	206.2	
15	365	45.55	188.9	
16	389	52.83	205.7	
17	408	34.28	127.3	
18	451	28.90	97.1	
19	464	55.26	180.3	
20	534	33.90	96.2	
21	555	34.41	93.9	
22	573	20.08	53.1	
23	587	19.24	49.7	
24	627	25.33	61.3	
25	707	15.60	33.4	
26	742	19.42	39.6	

Assay Class: High Sensitivity DNA Assay
 Data Path: C:\...ents and Settings\Bioanalyzer\2013-08-05\2013-08-05_005.xad

Created: 8/5/2013 5:09:20 PM
 Modified: 8/5/2013 5:52:55 PM

Electropherogram Summary Continued ...

... Peak table for sample 3 : MM1 Soni 1:4 8/5/13

Peak	Size [bp]	Conc. [pg/μl]	Molarity [pmol/l]	Observations
27	822	29.83	55.0	
28	975	10.70	16.6	
29	10,380	75.00	10.9	Upper Marker

Region table for sample 3 : MM1 Soni 1:4 8/5/13

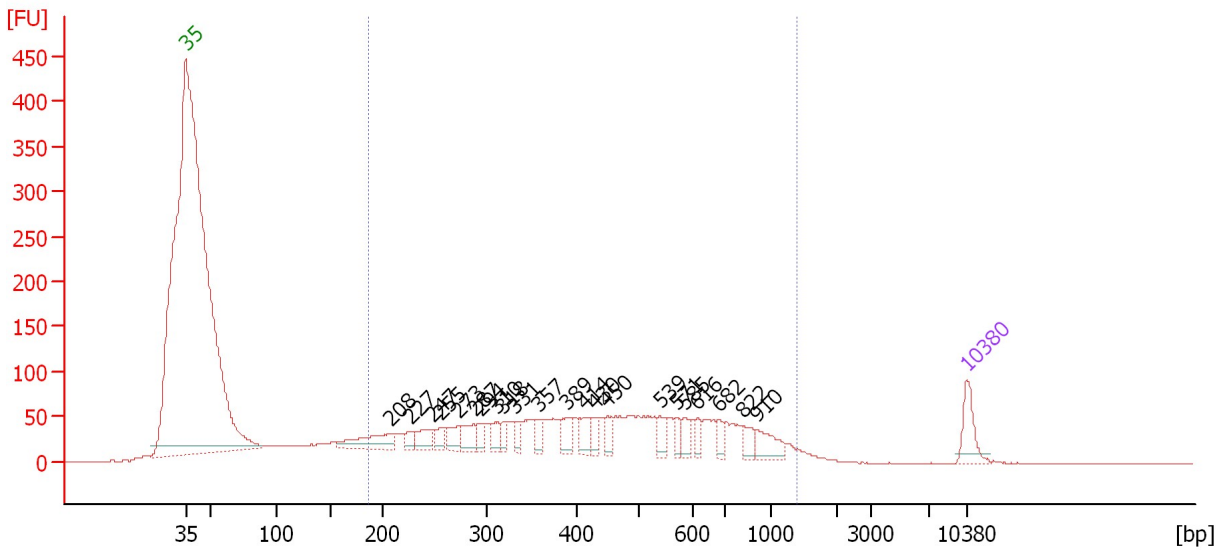
From [bp]	To [bp]	Average Size [bp]	Molarity [pmol/l]	Conc. [pg/μl]	Corr. Area	% of Total	Size distribution in CV [%]	Color
175	1,000	401	10,926.9	2,292.69	1,824.7	81	41.7	■

Assay Class: High Sensitivity DNA Assay
 Data Path: C:\...ents and Settings\Bioanalyzer\2013-08-05\2013-08-05_005.xad

Created: 8/5/2013 5:09:20 PM
 Modified: 8/5/2013 5:52:55 PM

Electropherogram Summary Continued ...

MM2 Soni 1:4 8/5/13 [9 (3+3+3)Cycles]



Overall Results for sample 4 : MM2 Soni 1:4 8/5/13

Number of peaks found: 22 Corr. Area 1: 2,142.7
 Noise: 0.2

Peak table for sample 4 : MM2 Soni 1:4 8/5/13

Peak	Size [bp]	Conc. [pg/μl]	Molarity [pmol/l]	Observations
1	35	125.00	5,411.3	Lower Marker
2	208	142.83	1,042.5	
3	227	35.51	237.5	
4	247	80.13	491.3	
5	255	50.69	300.7	
6	273	68.24	378.3	
7	287	76.82	405.2	
8	294	41.72	215.1	
9	310	48.22	235.5	
10	318	37.17	177.1	
11	331	40.84	187.2	
12	357	40.78	173.1	
13	389	69.39	270.1	
14	414	65.73	240.3	
15	430	43.40	153.0	
16	450	43.61	146.8	
17	539	51.70	145.2	
18	571	33.47	88.9	
19	585	39.97	103.6	
20	616	31.49	77.5	
21	682	30.90	68.7	
22	822	44.92	82.7	
23	910	78.21	130.2	
24	10,380	75.00	10.9	Upper Marker

Assay Class: High Sensitivity DNA Assay
Data Path: C:\...ents and Settings\Bioanalyzer\2013-08-05\2013-08-05_005.xad

Created: 8/5/2013 5:09:20 PM
Modified: 8/5/2013 5:52:55 PM

Electropherogram Summary Continued ...

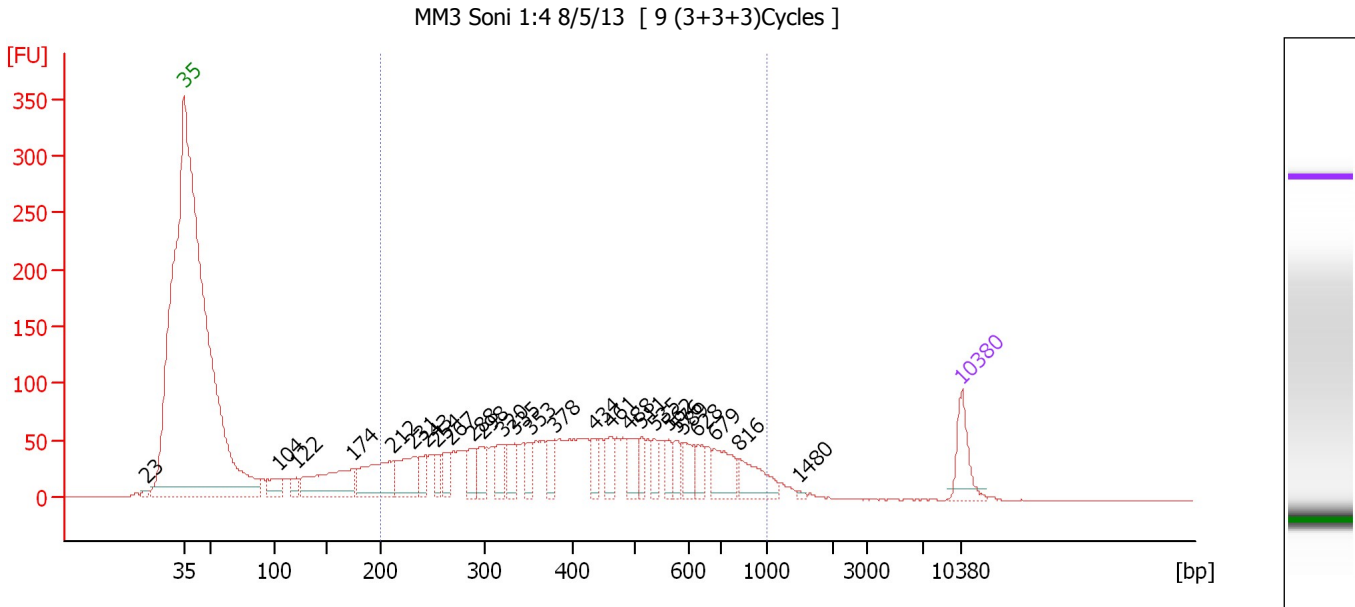
... Region table for sample 4 : MM2 Soni 1:4 8/5/13

From [bp]	To [bp]	Average Size [bp]	Molarity [pmol/l]	Conc. [pg/μl]	Corr. Area	% of Total	Size distribution in CV [%]	Color
187	1,384	473	10,671.2	2,530.25	2,142.7	83	47.3	■

Assay Class: High Sensitivity DNA Assay
 Data Path: C:\...ents and Settings\Bioanalyzer\2013-08-05\2013-08-05_005.xad

Created: 8/5/2013 5:09:20 PM
 Modified: 8/5/2013 5:52:55 PM

Electropherogram Summary Continued ...



Overall Results for sample 5 : MM3 Soni 1:4 8/5/13

Number of peaks found: 27 Corr. Area 1: 2,059.8
 Noise: 0.1

Peak table for sample 5 : MM3 Soni 1:4 8/5/13

Peak	Size [bp]	Conc. [pg/μl]	Molarity [pmol/l]	Observations
1	23	0.00	0.0	
2	35	125.00	5,411.3	Lower Marker
3	104	68.98	1,002.1	
4	122	39.31	489.8	
5	174	249.17	2,167.2	
6	212	219.73	1,570.3	
7	231	141.64	928.6	
8	243	62.67	390.0	
9	254	50.17	298.9	
10	267	57.23	325.1	
11	288	62.93	330.6	
12	298	70.55	359.1	
13	320	70.04	331.5	
14	335	79.68	360.9	
15	353	50.33	215.9	
16	378	63.46	254.1	
17	434	43.77	152.8	
18	461	60.38	198.6	
19	488	71.63	222.5	
20	511	41.35	122.6	
21	535	48.24	136.6	
22	562	39.78	107.2	
23	576	41.28	108.5	
24	589	59.36	152.6	
25	628	46.98	113.3	
26	679	101.66	226.9	

Assay Class: High Sensitivity DNA Assay
 Data Path: C:\...ents and Settings\Bioanalyzer\2013-08-05\2013-08-05_005.xad

Created: 8/5/2013 5:09:20 PM
 Modified: 8/5/2013 5:52:55 PM

Electropherogram Summary Continued ...

... Peak table for sample 5 : MM3 Soni 1:4 8/5/13

Peak	Size [bp]	Conc. [pg/μl]	Molarity [pmol/l]	Observations
27	816	96.60	179.3	
28	1,480	5.01	5.1	
29	10,380	75.00	10.9	Upper Marker

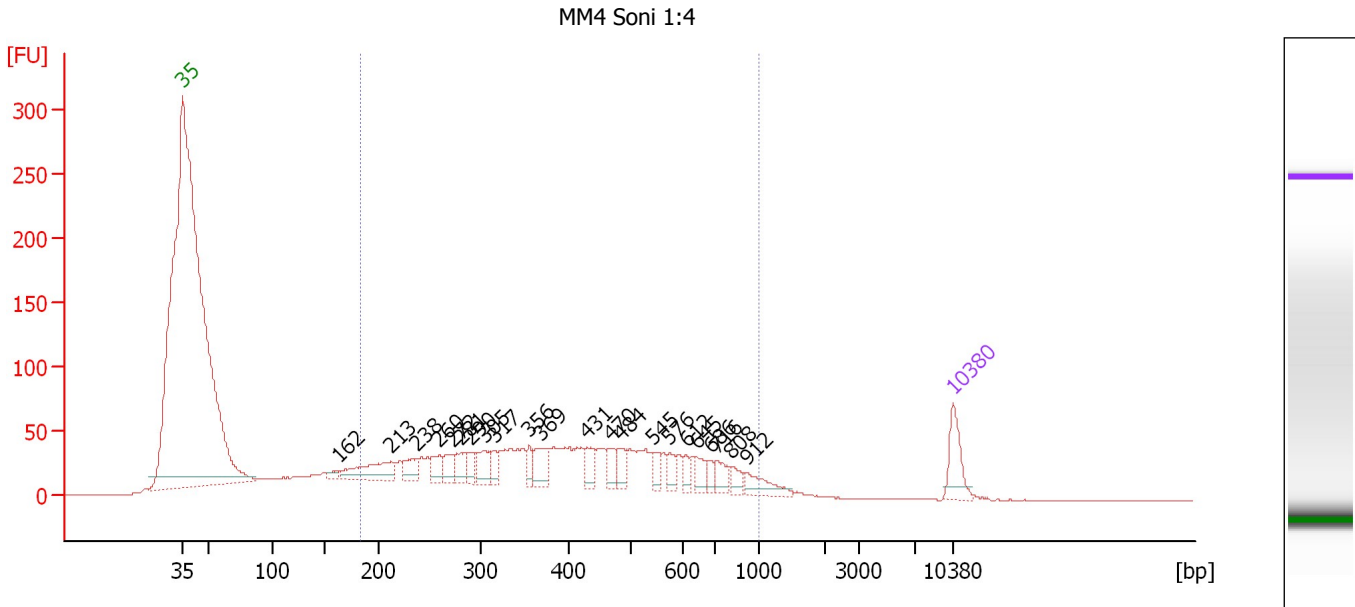
Region table for sample 5 : MM3 Soni 1:4 8/5/13

From [bp]	To [bp]	Average Size [bp]	Molarity [pmol/l]	Conc. [pg/μl]	Corr. Area	% of Total	Size distribution in CV [%]	Color
200	1,000	446	9,486.4	2,269.68	2,059.8	80	39.1	

Assay Class: High Sensitivity DNA Assay
 Data Path: C:\...ents and Settings\Bioanalyzer\2013-08-05\2013-08-05_005.xad

Created: 8/5/2013 5:09:20 PM
 Modified: 8/5/2013 5:52:55 PM

Electropherogram Summary Continued ...



Overall Results for sample 6 : MM4 Soni 1:4

Number of peaks found: 22 Corr. Area 1: 1,601.6
 Noise: 0.1

Peak table for sample 6 : MM4 Soni 1:4

Peak	Size [bp]	Conc. [pg/μl]	Molarity [pmol/l]	Observations
1	35	125.00	5,411.3	Lower Marker
2	162	19.79	184.8	
3	213	147.34	1,047.7	
4	238	66.93	425.9	
5	260	55.69	324.6	
6	272	57.75	321.1	
7	281	60.52	325.9	
8	290	37.49	195.7	
9	305	70.18	348.6	
10	317	35.40	169.4	
11	356	36.28	154.4	
12	369	84.36	346.6	
13	431	55.08	193.4	
14	470	51.74	166.7	
15	484	45.80	143.4	
16	545	38.14	106.0	
17	576	32.78	86.2	
18	612	25.16	62.3	
19	645	38.07	89.5	
20	686	24.56	54.3	
21	716	42.96	91.0	
22	808	31.27	58.6	
23	912	57.93	96.3	
24	10,380	75.00	10.9	Upper Marker

Assay Class: High Sensitivity DNA Assay
Data Path: C:\...ents and Settings\Bioanalyzer\2013-08-05\2013-08-05_005.xad

Created: 8/5/2013 5:09:20 PM
Modified: 8/5/2013 5:52:55 PM

Electropherogram Summary Continued ...

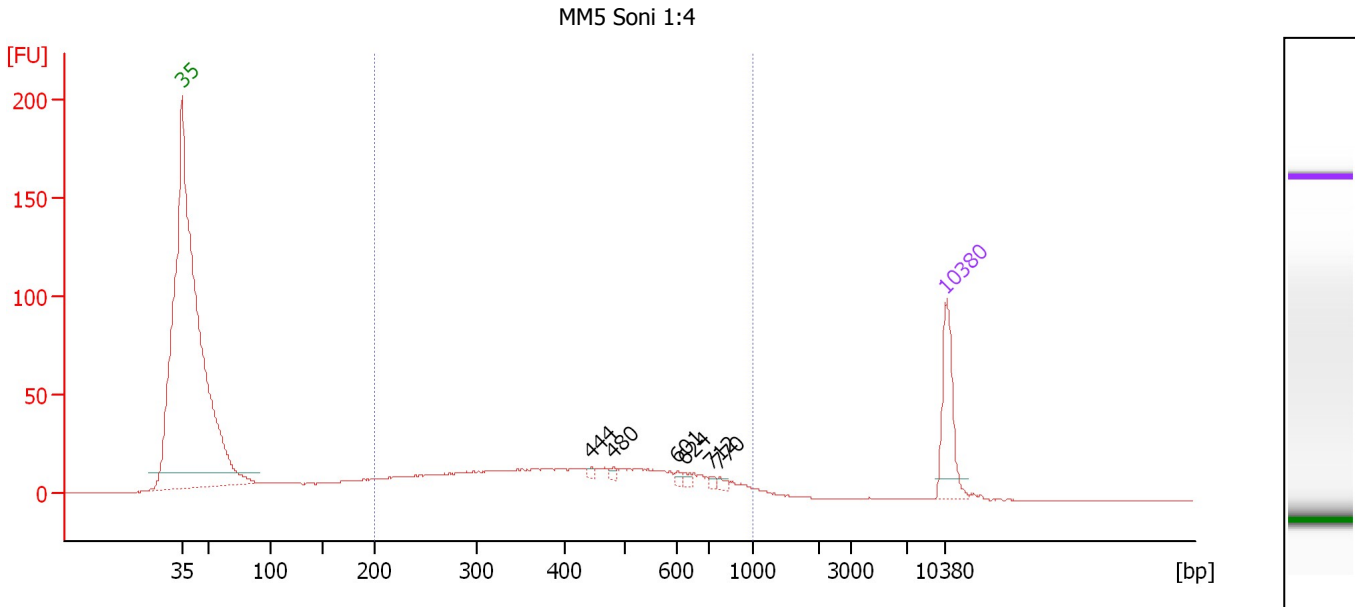
... Region table for sample 6 : MM4 Soni 1:4

From [bp]	To [bp]	Average Size [bp]	Molarity [pmol/l]	Conc. [pg/μl]	Corr. Area	% of Total	Size distribution in CV [%]	Color
184	1,000	428	10,373.6	2,331.23	1,601.6	81	40.9	■

Assay Class: High Sensitivity DNA Assay
 Data Path: C:\...ents and Settings\Bioanalyzer\2013-08-05\2013-08-05_005.xad

Created: 8/5/2013 5:09:20 PM
 Modified: 8/5/2013 5:52:55 PM

Electropherogram Summary Continued ...



Overall Results for sample 7 : MM5 Soni 1:4

Number of peaks found: 6 Corr. Area 1: 545.1
 Noise: 0.1

Peak table for sample 7 : MM5 Soni 1:4

Peak	Size [bp]	Conc. [pg/μl]	Molarity [pmol/l]	Observations
1	35	125.00	5,411.3	Lower Marker
2	444	4.36	14.9	
3	480	6.10	19.3	
4	601	5.04	12.7	
5	624	6.00	14.6	
6	712	4.71	10.0	
7	770	5.48	10.8	
8	10,380	75.00	10.9	Upper Marker

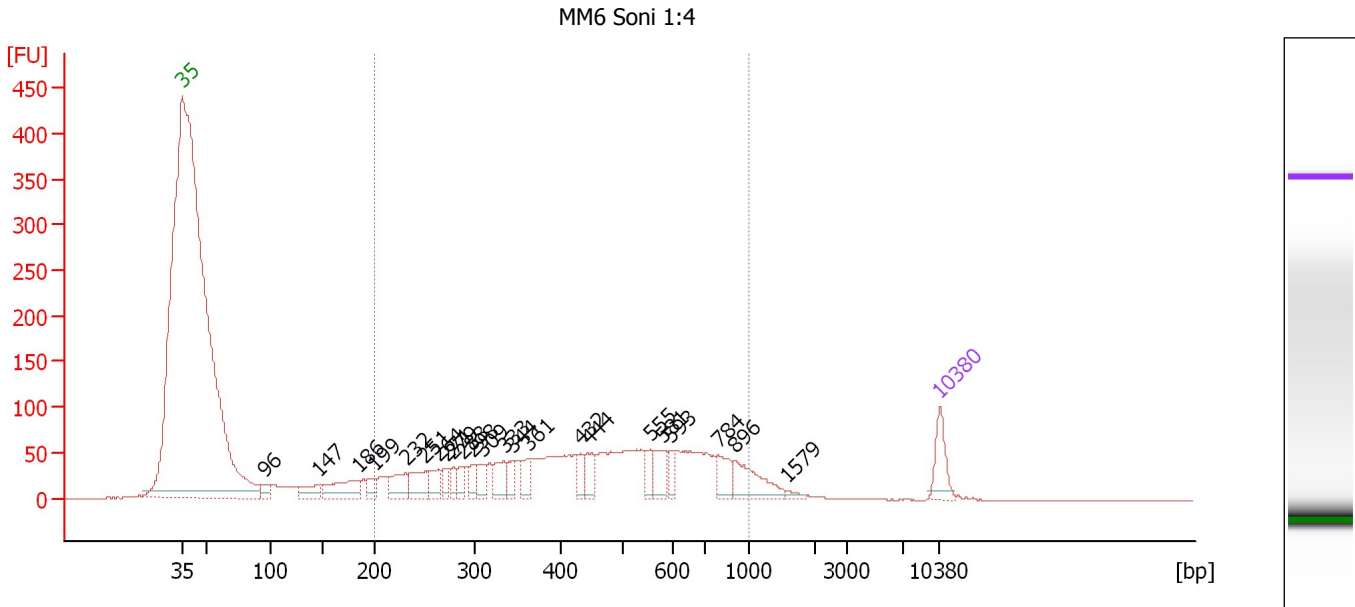
Region table for sample 7 : MM5 Soni 1:4

From [bp]	To [bp]	Average Size [bp]	Molarity [pmol/l]	Conc. [pg/μl]	Corr. Area	% of Total	Size distribution in CV [%]	Color
200	1,000	440	2,491.4	591.89	545.1	79	38.6	Blue

Assay Class: High Sensitivity DNA Assay
 Data Path: C:\...ents and Settings\Bioanalyzer\2013-08-05\2013-08-05_005.xad

Created: 8/5/2013 5:09:20 PM
 Modified: 8/5/2013 5:52:55 PM

Electropherogram Summary Continued ...



Overall Results for sample 8 : MM6 Soni 1:4

Number of peaks found: 23 Corr. Area 1: 1,903.2
 Noise: 0.2

Peak table for sample 8 : MM6 Soni 1:4

Peak	Size [bp]	Conc. [pg/μl]	Molarity [pmol/l]	Observations
1	35	125.00	5,411.3	Lower Marker
2	96	46.25	731.8	
3	147	77.50	797.6	
4	186	142.08	1,159.8	
5	199	40.44	307.2	
6	232	93.78	613.2	
7	251	96.77	584.6	
8	264	66.58	382.8	
9	271	38.51	215.0	
10	279	39.11	212.5	
11	288	42.52	223.8	
12	298	40.77	207.3	
13	309	59.49	292.0	
14	333	78.35	356.1	
15	344	50.56	222.8	
16	361	51.02	214.1	
17	432	42.17	148.1	
18	444	62.20	212.3	
19	555	49.70	135.8	
20	581	77.83	203.1	
21	593	37.93	96.9	
22	784	71.14	137.4	
23	896	123.31	208.4	
24	1,579	10.08	9.7	
25	10,380	75.00	10.9	Upper Marker

Assay Class: High Sensitivity DNA Assay
Data Path: C:\...ents and Settings\Bioanalyzer\2013-08-05\2013-08-05_005.xad

Created: 8/5/2013 5:09:20 PM
Modified: 8/5/2013 5:52:55 PM

Electropherogram Summary Continued ...

... Region table for sample 8 : MM6 Soni 1:4

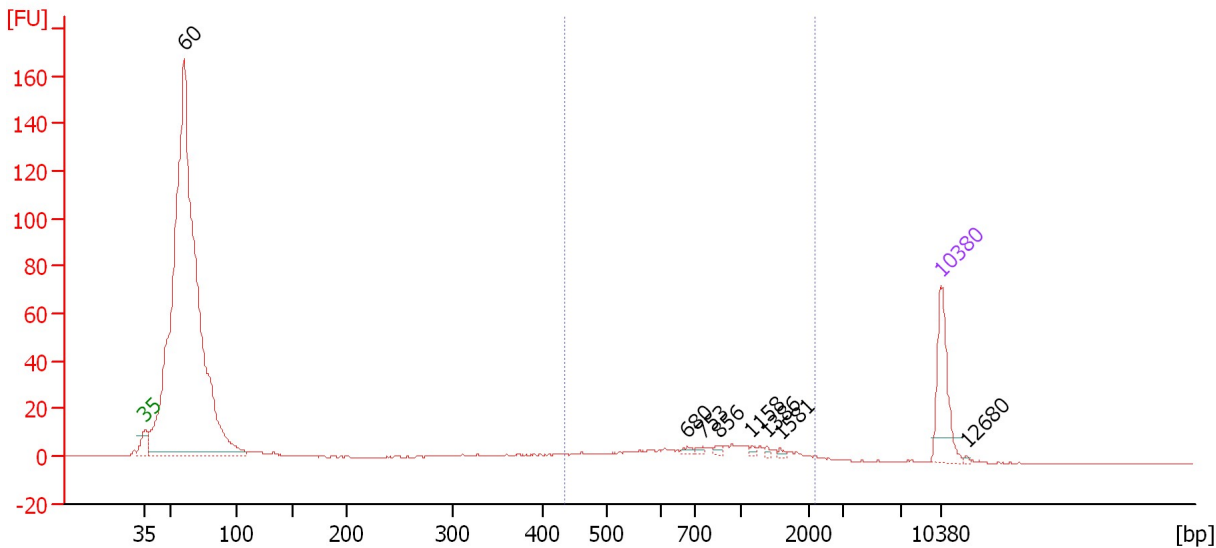
From [bp]	To [bp]	Average Size [bp]	Molarity [pmol/l]	Conc. [pg/μl]	Corr. Area	% of Total	Size distribution in CV [%]	Color
200	1,000	476	8,426.4	2,125.32	1,903.2	82	39.0	■

Assay Class: High Sensitivity DNA Assay
 Data Path: C:\...ents and Settings\Bioanalyzer\2013-08-05\2013-08-05_005.xad

Created: 8/5/2013 5:09:20 PM
 Modified: 8/5/2013 5:52:55 PM

Electropherogram Summary Continued ...

PSH1 Soni-Cleaned 1:2 [Resoni 1Cycles 20sec.on/90Sec.off]



Setpoint Deviations for sample 9 : PSH1 Soni-Cleaned 1:2

Height Threshold [FU] : 2

Overall Results for sample 9 : PSH1 Soni-Cleaned 1:2

Number of peaks found: 8 Corr. Area 1: 111.0
 Noise: 0.1

Peak table for sample 9 : PSH1 Soni-Cleaned 1:2

Peak	Size [bp]	Conc. [pg/μl]	Molarity [pmol/l]	Observations
1	35	125.00	5,411.3	Lower Marker
2	60	2,051.34	51,757.6	
3	680	4.06	9.0	
4	753	3.99	8.0	
5	856	5.10	9.0	
6	1,158	3.31	4.3	
7	1,386	3.12	3.4	
8	1,581	3.22	3.1	
9	10,380	75.00	10.9	Upper Marker
10	12,680	0.00	0.0	

Region table for sample 9 : PSH1 Soni-Cleaned 1:2

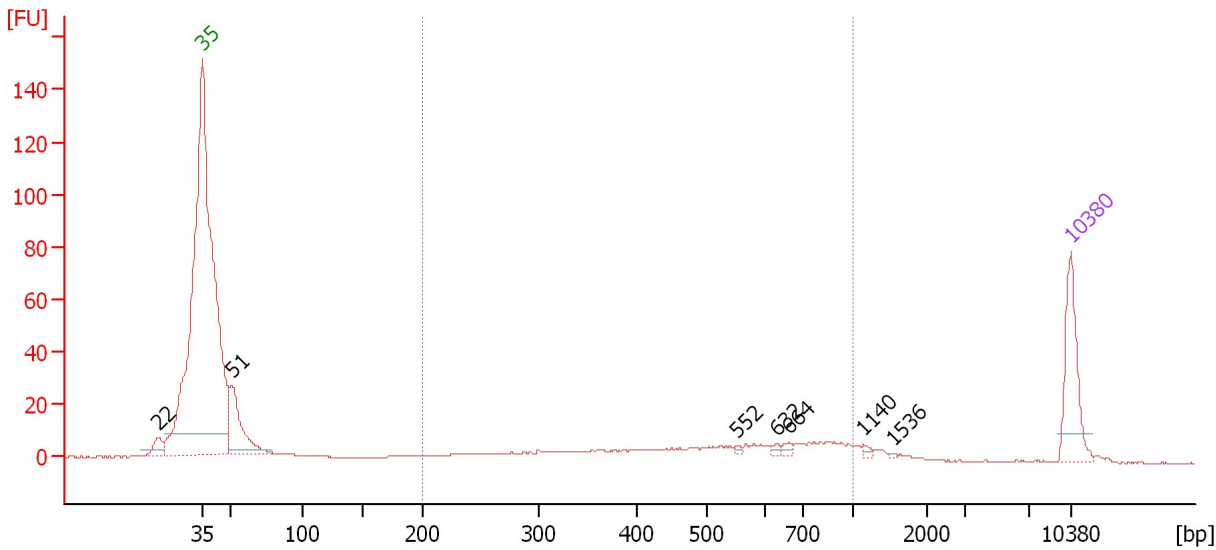
From [bp]	To [bp]	Average Size [bp]	Molarity [pmol/l]	Conc. [pg/μl]	Corr. Area	% of Total	Size distribution in CV [%]	Color
433	2,182	918	295.5	143.16	111.0	10	45.7	Blue

Assay Class: High Sensitivity DNA Assay
 Data Path: C:\...ents and Settings\Bioanalyzer\2013-08-05\2013-08-05_005.xad

Created: 8/5/2013 5:09:20 PM
 Modified: 8/5/2013 5:52:55 PM

Electropherogram Summary Continued ...

PSH2 Soni-Cleaned 1:2 [Resoni 1Cycles 20sec.on/90Sec.off]



Setpoint Deviations for sample 10 : PSH2 Soni-Cleaned 1:2

Height Threshold [FU] : 2

Overall Results for sample 10 : PSH2 Soni-Cleaned 1:2

Number of peaks found: 7 Corr. Area 1: 171.5
 Noise: 0.1

Peak table for sample 10 : PSH2 Soni-Cleaned 1:2

Peak	Size [bp]	Conc. [pg/μl]	Molarity [pmol/l]	Observations
1	22	0.00	0.0	
2	35	125.00	5,411.3	Lower Marker
3	51	125.80	3,740.4	
4	552	2.95	8.1	
5	632	4.41	10.6	
6	664	5.97	13.6	
7	1,140	3.98	5.3	
8	1,536	1.41	1.4	
9	10,380	75.00	10.9	Upper Marker

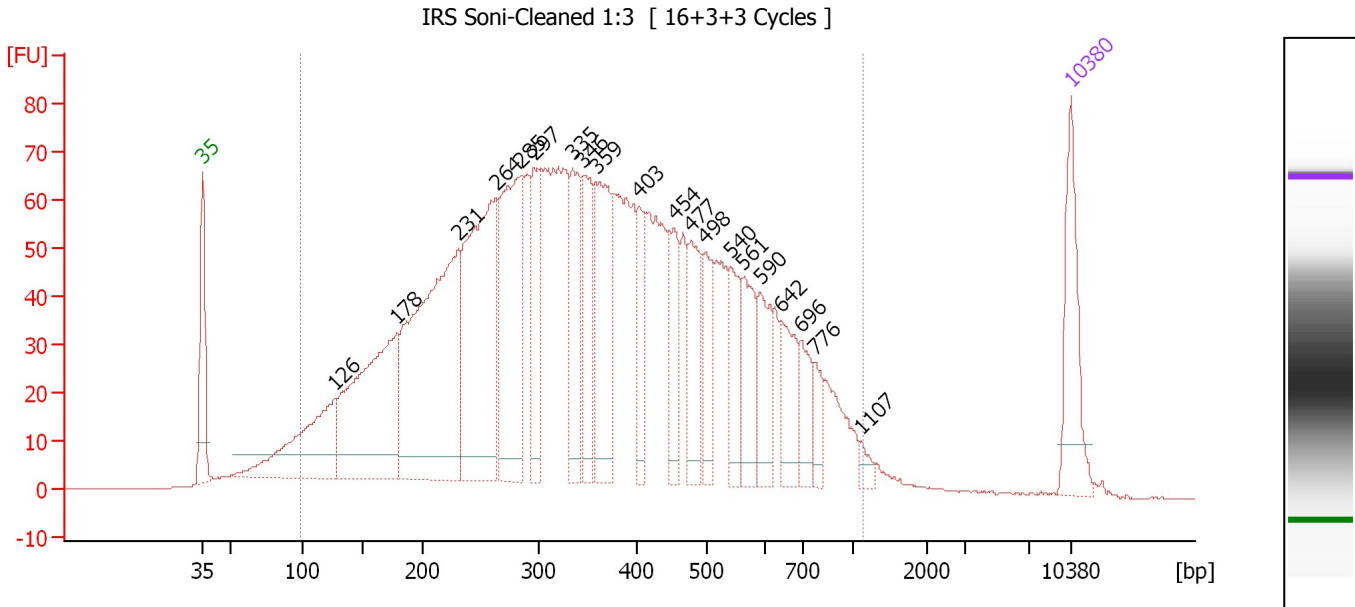
Region table for sample 10 : PSH2 Soni-Cleaned 1:2

From [bp]	To [bp]	Average Size [bp]	Molarity [pmol/l]	Conc. [pg/μl]	Corr. Area	% of Total	Size distribution in CV [%]	Color
200	1,000	531	838.0	233.55	171.5	55	37.9	Blue

Assay Class: High Sensitivity DNA Assay
 Data Path: C:\...ents and Settings\Bioanalyzer\2013-08-05\2013-08-05_005.xad

Created: 8/5/2013 5:09:20 PM
 Modified: 8/5/2013 5:52:55 PM

Electropherogram Summary Continued ...



Overall Results for sample 11 : IRS Soni-Cleaned 1:3

Number of peaks found: 20 Corr. Area 1: 2,759.3
 Noise: 0.1

Peak table for sample 11 : IRS Soni-Cleaned 1:3

Peak	Size [bp]	Conc. [pg/μl]	Molarity [pmol/l]	Observations
1	35	125.00	5,411.3	Lower Marker
2	126	200.49	2,405.4	
3	178	327.95	2,784.4	
4	231	471.90	3,090.2	
5	264	348.00	2,000.6	
6	285	254.83	1,354.7	
7	297	106.69	544.6	
8	335	108.99	492.9	
9	346	98.88	433.4	
10	359	159.81	674.9	
11	403	64.84	244.0	
12	454	65.44	218.3	
13	477	83.84	266.2	
14	498	61.31	186.7	
15	540	56.73	159.1	
16	561	69.05	186.5	
17	590	66.23	170.0	
18	642	63.83	150.6	
19	696	43.17	94.0	
20	776	26.32	51.4	
21	1,107	9.30	12.7	
22	10,380	75.00	10.9	Upper Marker

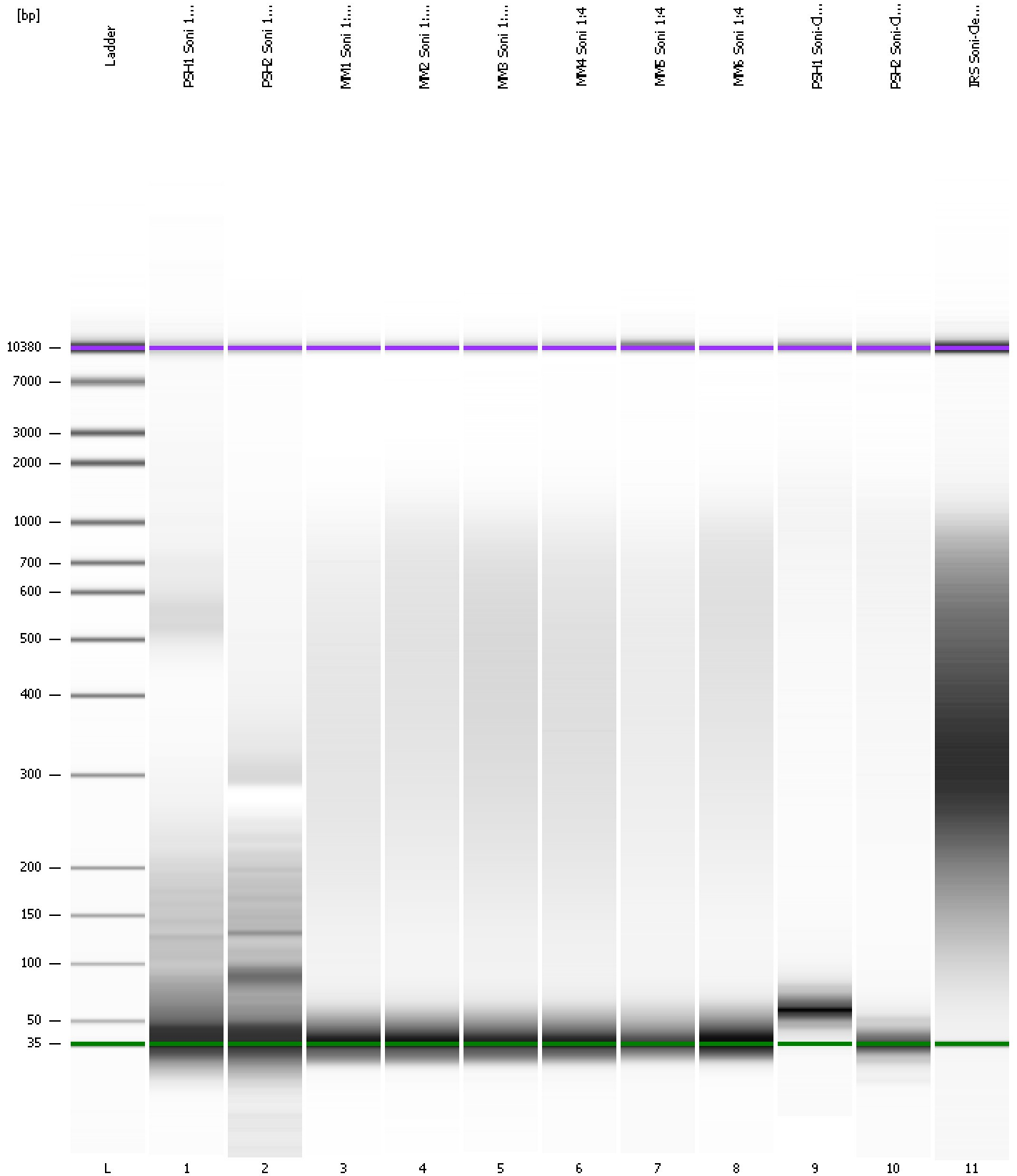
Region table for sample 11 : IRS Soni-Cleaned 1:3

From [bp]	To [bp]	Average Size [bp]	Molarity [pmol/l]	Conc. [pg/μl]	Corr. Area	% of Total	Size distribution in CV [%]	Color
99	1,137	380	21,553.1	3,919.15	2,759.3	96	46.1	Blue

Assay Class: High Sensitivity DNA Assay
Data Path: C:\...ents and Settings\Bioanalyzer\2013-08-05\2013-08-05_005.xad

Created: 8/5/2013 5:09:20 PM
Modified: 8/5/2013 5:52:55 PM

Gel Image



Assay Class: High Sensitivity DNA Assay
 Data Path: C:\...ents and Settings\Bioanalyzer\2013-08-05\2013-08-05_005.xad

Created: 8/5/2013 5:09:20 PM
 Modified: 8/5/2013 5:52:55 PM

Run Logbook

Description	Number	Source	Category	Sub Category	Time	Time Zone	User	Host
Run ended on port 1 (Number of wells acquired: 12)		Instrument	Run		8/5/2013 5:50:39 PM	(GMT --07:00) Pacific Standard Time	UC Davis	D8XSMGH1
Run started on port 1 (File: C:\Documents and Settings\Bioanalyzer\2013-08-05\2013-08-05_005.xad)		Instrument	Run		8/5/2013 5:09:25 PM	(GMT --07:00) Pacific Standard Time	UC Davis	D8XSMGH1
Product Number : G2938B		Instrument	Run		8/5/2013 5:09:25 PM	(GMT --07:00) Pacific Standard Time	UC Davis	D8XSMGH1
Name :		Instrument	Run		8/5/2013 5:09:25 PM	(GMT --07:00) Pacific Standard Time	UC Davis	D8XSMGH1
Vendor : Agilent Technologies		Instrument	Run		8/5/2013 5:09:25 PM	(GMT --07:00) Pacific Standard Time	UC Davis	D8XSMGH1
Serial# : DE13701086		Instrument	Run		8/5/2013 5:09:25 PM	(GMT --07:00) Pacific Standard Time	UC Davis	D8XSMGH1
Firmware : C.01.069		Instrument	Run		8/5/2013 5:09:25 PM	(GMT --07:00) Pacific Standard Time	UC Davis	D8XSMGH1
Cartridge : Electrode		Instrument	Run		8/5/2013 5:09:25 PM	(GMT --07:00) Pacific Standard Time	UC Davis	D8XSMGH1