

Assay Class: High Sensitivity DNA Assay
Data Path: C:\...ents and Settings\Bioanalyzer\2013-08-06\2013-08-06_001.xad

Created: 8/6/2013 9:42:24 AM
Modified: 8/6/2013 10:23:47 AM

Electrophoresis File Run Summary

Instrument Information:

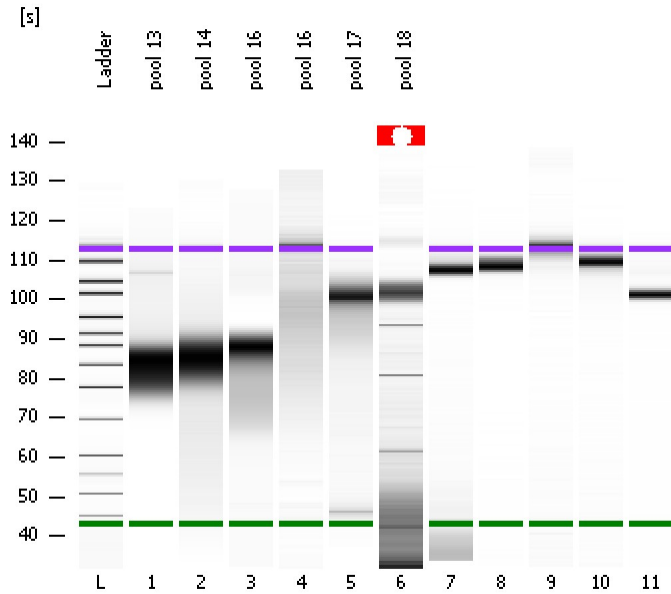
Instrument Name: DE13701086 Firmware: C.01.069
Serial#: DE13701086 Type: G2938B

Assay Information:

Assay Origin Path: C:\Program Files\Agilent\2100 bioanalyzer\2100 expert\assays\dsDNA\High Sensitivity DNA.xsy
Assay Class: High Sensitivity DNA Assay
Version: 1.03
Assay Comments: Copyright © 2003-2010 Agilent Technologies

Chip Information:

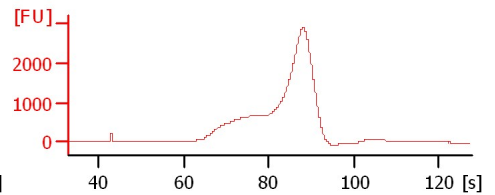
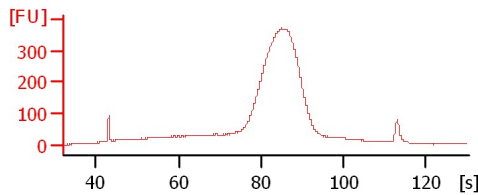
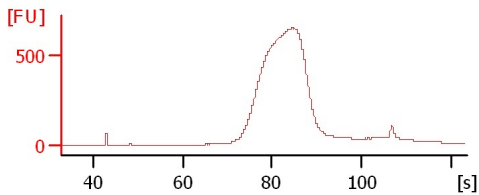
Chip Lot #: Reagent Kit Lot #: Chip Comments:



pool 13

pool 14

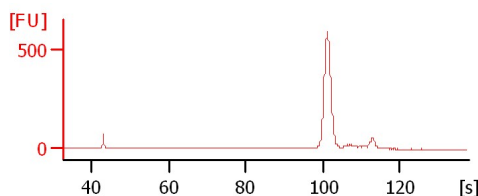
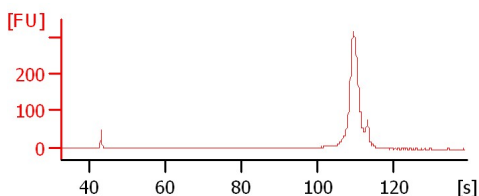
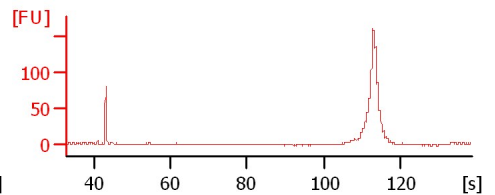
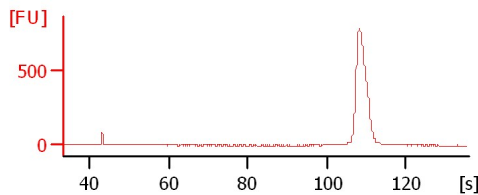
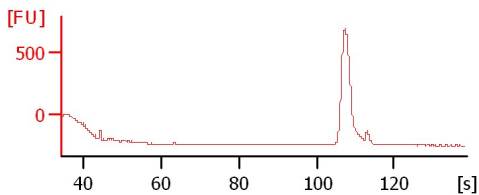
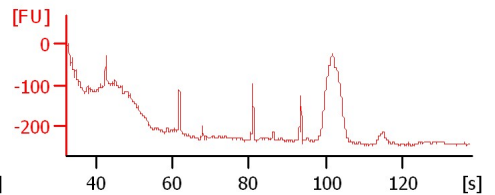
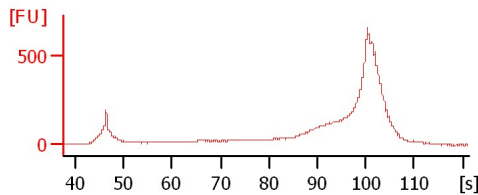
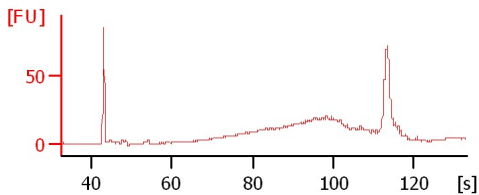
pool 16



pool 16

pool 17

pool 18



Assay Class: High Sensitivity DNA Assay
Data Path: C:\...ents and Settings\Bioanalyzer\2013-08-06\2013-08-06_001.xad

Created: 8/6/2013 9:42:24 AM
Modified: 8/6/2013 10:23:47 AM

Electrophoresis File Run Summary (Chip Summary)

Sample Name	Sample Comment	Rest. Digest	Status	Observation	Result Label	Result Color
pool 13		<input type="checkbox"/>	✓			
pool 14		<input type="checkbox"/>	✓			
pool 16		<input type="checkbox"/>	✓			
pool 16		<input type="checkbox"/>	✓			
pool 17		<input type="checkbox"/>	✓			
pool 18		<input type="checkbox"/>	✓			
		<input type="checkbox"/>	✓			
		<input type="checkbox"/>	✓			
		<input type="checkbox"/>	✓			
		<input type="checkbox"/>	✓			
Ladder		<input type="checkbox"/>	✓			

Chip Lot # **Reagent Kit Lot #**

Chip Comments :

Assay Class: High Sensitivity DNA Assay
 Data Path: C:\...ents and Settings\Bioanalyzer\2013-08-06\2013-08-06_001.xad

Created: 8/6/2013 9:42:24 AM
 Modified: 8/6/2013 10:23:47 AM

Electrophoresis Assay Details

General Analysis Settings

Number of Available Sample and Ladder Wells (Max.) : 12
 Minimum Visible Range [s] : 32
 Maximum Visible Range [s] : 138
 Start Analysis Time Range [s] : 33
 End Analysis Time Range [s] : 137.5
 Ladder Concentration [pg/μl] : 1950
 Uses Standard Area for Ladder Fragments
 Lower Marker Concentration [pg/μl] : 125
 Upper Marker Concentration [pg/μl] : 75
 Used Upper Marker for Quantitation
 Standard Curve Fit is Point to Point
 Show Data Aligned to Lower and Upper Marker

Integrator Settings

Integration Start Time [s] : 33.05
 Integration End Time [s] : 137
 Slope Threshold : 0.8
 Height Threshold [FU] : 5
 Area Threshold : 0.1
 Width Threshold [s] : 0.6
 Baseline Plateau [s] : 0.5

Filter Settings

Filter Width [s] : 0.5
 Polynomial Order : 4

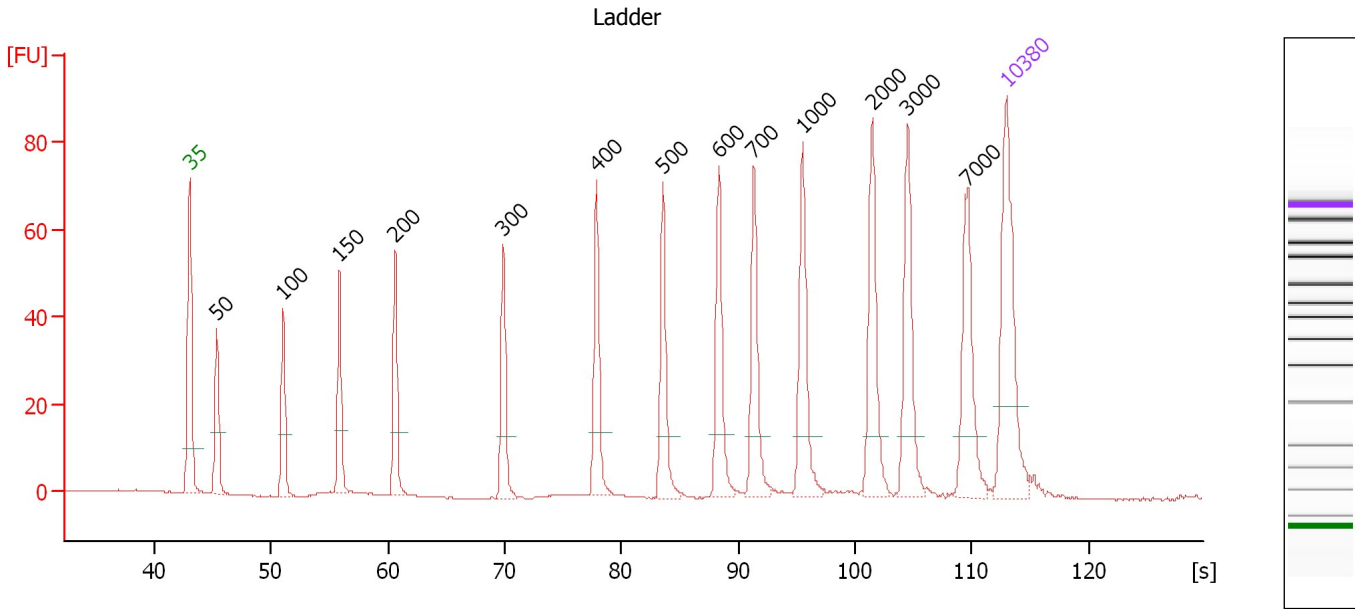
Ladder

Ladder Peak	Size	Area
1	35	160
2	50	210
3	100	208
4	150	221
5	200	242
6	300	270
7	400	305
8	500	306
9	600	336
10	700	321
11	1000	366
12	2000	413
13	3000	411
14	7000	400
15	10380	214

Assay Class: High Sensitivity DNA Assay
 Data Path: C:\...ents and Settings\Bioanalyzer\2013-08-06\2013-08-06_001.xad

Created: 8/6/2013 9:42:24 AM
 Modified: 8/6/2013 10:23:47 AM

Electropherogram Summary



Overall Results for Ladder

Noise: 0.1

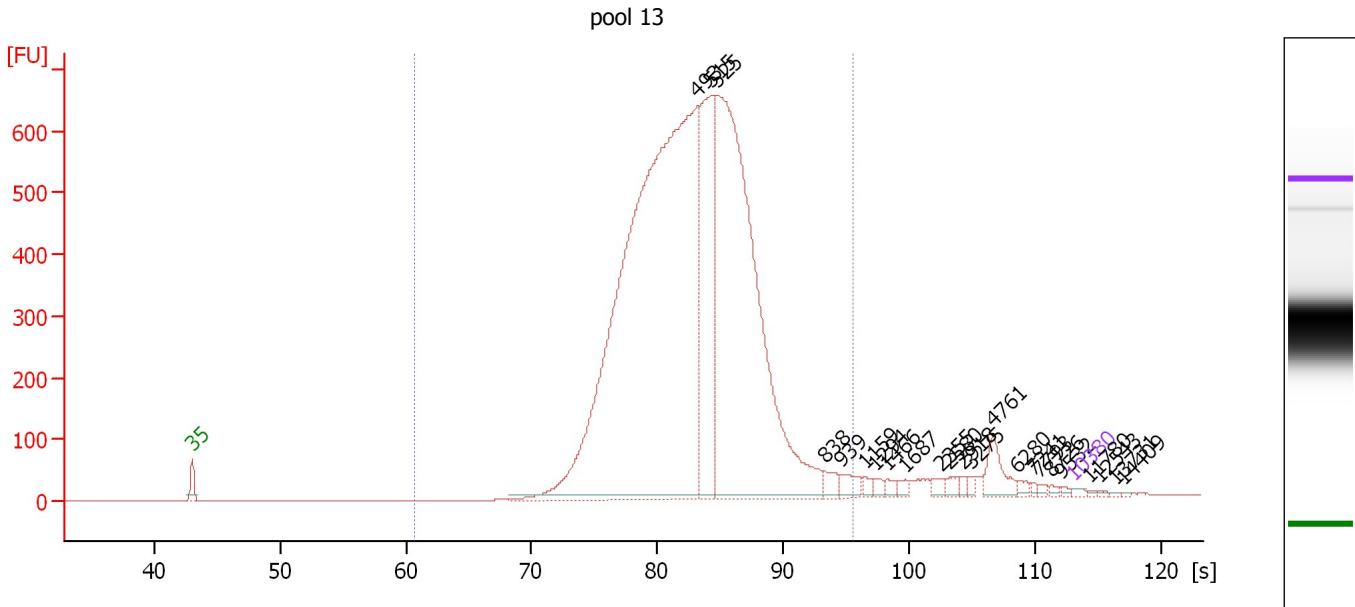
Peak table for Ladder

Peak	Size [bp]	Conc. [pg/μl]	Molarity [pmol/l]	Observations
1	35	125.00	5,411.3	Lower Marker
2	50	150.00	4,545.5	Ladder Peak
3	100	150.00	2,272.7	Ladder Peak
4	150	150.00	1,515.2	Ladder Peak
5	200	150.00	1,136.4	Ladder Peak
6	300	150.00	757.6	Ladder Peak
7	400	150.00	568.2	Ladder Peak
8	500	150.00	454.5	Ladder Peak
9	600	150.00	378.8	Ladder Peak
10	700	150.00	324.7	Ladder Peak
11	1,000	150.00	227.3	Ladder Peak
12	2,000	150.00	113.6	Ladder Peak
13	3,000	150.00	75.8	Ladder Peak
14	7,000	150.00	32.5	Ladder Peak
15	10,380	75.00	10.9	Upper Marker

Assay Class: High Sensitivity DNA Assay
 Data Path: C:\...ents and Settings\Bioanalyzer\2013-08-06\2013-08-06_001.xad

Created: 8/6/2013 9:42:24 AM
 Modified: 8/6/2013 10:23:47 AM

Electropherogram Summary Continued ...



Overall Results for sample 1 : pool 13

Number of peaks found: 23 Corr. Area 1: 9,826.0
 Noise: 0.2

Peak table for sample 1 : pool 13

Peak	Size [bp]	Conc. [pg/μl]	Molarity [pmol/l]	Observations
1	35	125.00	5,411.3	Lower Marker
2	493	37,892.22	116,535.6	
3	515	6,564.06	19,298.3	
4	525	21,843.28	63,018.3	
5	838	404.31	730.7	
6	939	427.10	688.9	
7	1,159	174.85	228.7	
8	1,294	165.83	194.1	
9	1,466	158.26	163.6	
10	1,687	149.94	134.6	
11	2,355	163.90	105.5	
12	2,580	201.04	118.1	
13	2,918	103.14	53.6	
14	3,275	103.86	48.0	
15	4,761	771.46	245.5	
16	6,280	126.56	30.5	
17	7,241	62.28	13.0	
18	7,793	74.95	14.6	
19	8,726	69.94	12.1	
20	9,532	53.57	8.5	
21	10,380	75.00	10.9	Upper Marker
22	11,780	0.00	0.0	
23	12,543	0.00	0.0	
24	13,731	0.00	0.0	
25	14,409	0.00	0.0	

Assay Class: High Sensitivity DNA Assay
Data Path: C:\...ents and Settings\Bioanalyzer\2013-08-06\2013-08-06_001.xad

Created: 8/6/2013 9:42:24 AM
Modified: 8/6/2013 10:23:47 AM

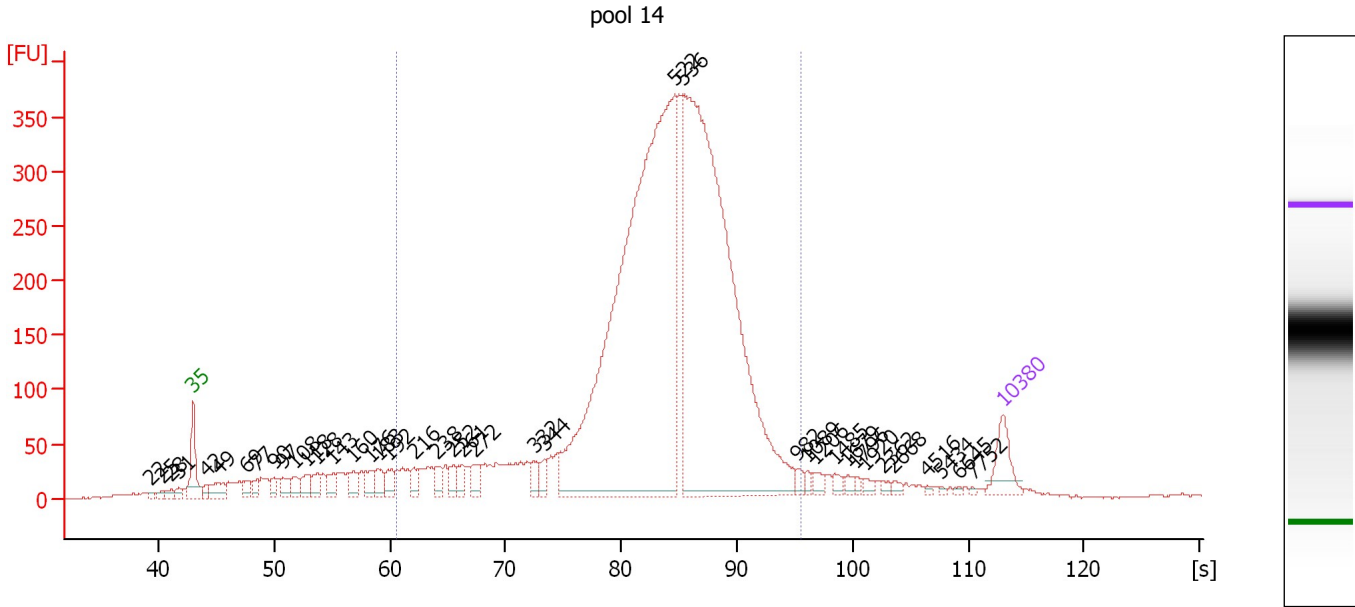
Electropherogram Summary Continued ...**... Region table for sample 1 : pool 13**

From [s]	To [s]	Average Size [bp]	Molarity [pmol/l]	Conc. [pg/μl]	Corr. Area % of Total	Size distribution in CV [%]	Co lor
60.61	95.52	493	218,063.8	68,169.58	9,826.0	95	18.6

Assay Class: High Sensitivity DNA Assay
 Data Path: C:\...ents and Settings\Bioanalyzer\2013-08-06\2013-08-06_001.xad

Created: 8/6/2013 9:42:24 AM
 Modified: 8/6/2013 10:23:47 AM

Electropherogram Summary Continued ...



Overall Results for sample 2 : pool 14

Number of peaks found: 40 Corr. Area 1: 5,499.1
 Noise: 1.1

Peak table for sample 2 : pool 14

Peak	Size [bp]	Conc. [pg/μl]	Molarity [pmol/l]	Observations
1	22	0.00	0.0	
2	25	0.00	0.0	
3	28	0.00	0.0	
4	31	0.00	0.0	
5	35	125.00	5,411.3	Lower Marker
6	42	28.47	1,016.7	
7	49	68.55	2,109.0	
8	69	38.33	837.9	
9	77	34.59	680.2	
10	90	36.01	603.0	
11	97	46.64	725.5	
12	108	47.59	667.2	
13	118	60.54	775.7	
14	128	53.65	635.3	
15	143	48.82	519.0	
16	160	47.32	446.8	
17	176	53.04	457.9	
18	183	49.68	411.8	
19	192	50.51	398.6	
20	216	35.97	252.5	
21	238	44.48	283.3	
22	252	38.27	229.7	
23	261	46.52	270.5	
24	272	57.06	317.8	
25	332	35.44	161.7	
26	344	43.86	193.3	

Assay Class: High Sensitivity DNA Assay
 Data Path: C:\...ents and Settings\Bioanalyzer\2013-08-06\2013-08-06_001.xad

Created: 8/6/2013 9:42:24 AM
 Modified: 8/6/2013 10:23:47 AM

Electropherogram Summary Continued ...

... Peak table for sample 2 : pool 14

Peak	Size [bp]	Conc. [pg/μl]	Molarity [pmol/l]	Observations
27	522	2,668.37	7,738.8	
28	536	2,337.75	6,608.1	
29	982	17.67	27.3	
30	1,089	14.09	19.6	
31	1,206	20.88	26.2	
32	1,485	16.34	16.7	
33	1,679	14.27	12.9	
34	1,796	8.55	7.2	
35	1,920	12.66	10.0	
36	2,362	10.18	6.5	
37	2,668	9.73	5.5	
38	4,516	4.65	1.6	
39	5,434	4.01	1.1	
40	6,645	4.02	0.9	
41	7,752	3.43	0.7	
42	10,380	75.00	10.9	Upper Marker

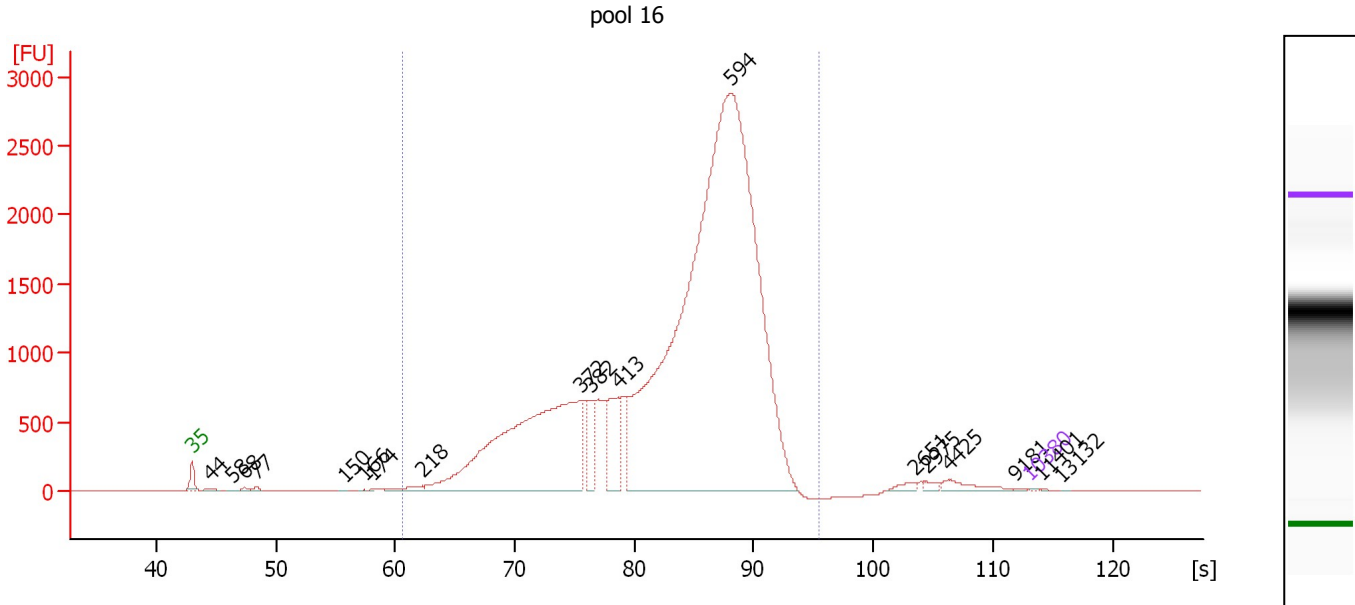
Region table for sample 2 : pool 14

From [s]	To [s]	Average Size [bp]	Molarity [pmol/l]	Conc. [pg/μl]	Corr. Area % of Total	Size distribution in CV [%]	Color
60.61	95.52	511	20,022.8	6,079.67	5,499.1 85	23.4	

Assay Class: High Sensitivity DNA Assay
 Data Path: C:\...ents and Settings\Bioanalyzer\2013-08-06\2013-08-06_001.xad

Created: 8/6/2013 9:42:24 AM
 Modified: 8/6/2013 10:23:47 AM

Electropherogram Summary Continued ...



Overall Results for sample 3 : pool 16

Number of peaks found: 18 Corr. Area 1: 35,809.1
 Noise: 0.8

Peak table for sample 3 : pool 16

Peak	Size [bp]	Conc. [pg/μl]	Molarity [pmol/l]	Observations
1	35	125.00	5,411.3	Lower Marker
2	44	618.79	21,100.6	
3	58	233.30	6,049.0	
4	68	516.35	11,531.9	
5	77	619.55	12,214.1	
6	150	100.72	1,017.6	
7	166	123.46	1,124.6	
8	174	131.66	1,147.8	
9	218	1,680.70	11,663.1	
10	372	80,980.63	330,221.8	
11	382	6,943.90	27,569.7	
12	413	11,574.28	42,421.6	
13	594	246,980.14	630,070.0	
14	2,651	896.08	512.1	
15	2,975	720.51	366.9	
16	4,425	2,010.32	688.4	
17	9,181	129.58	21.4	
18	10,380	75.00	10.9	Upper Marker
19	11,401	0.00	0.0	
20	13,132	0.00	0.0	

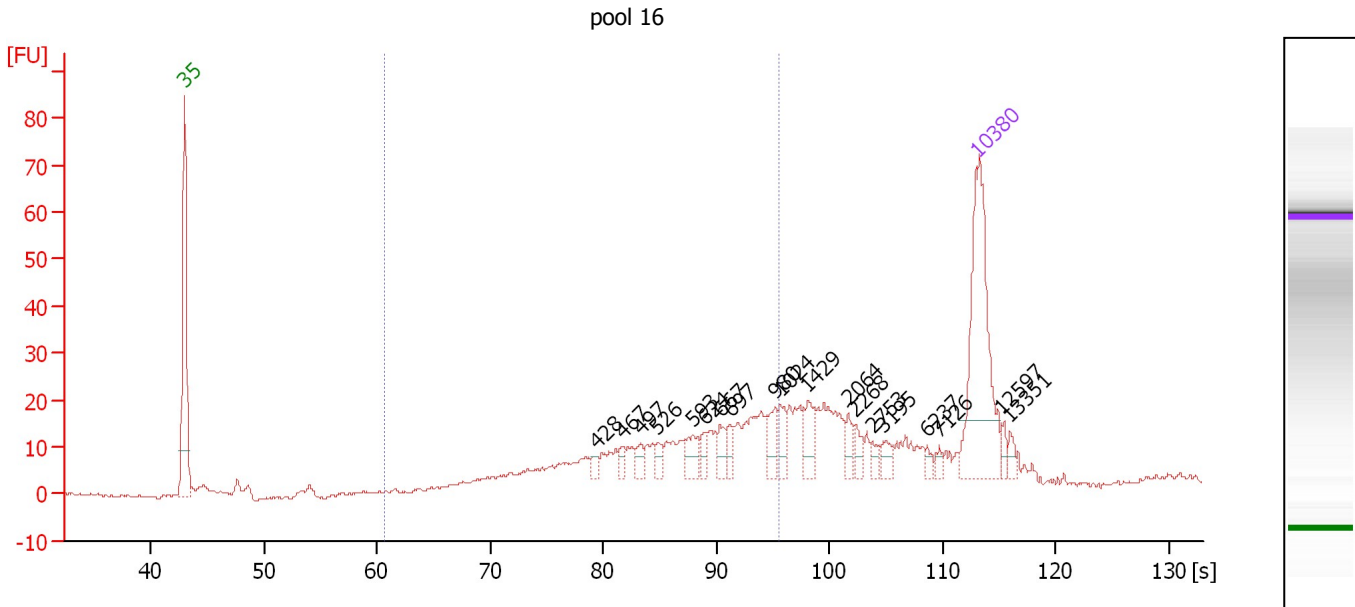
Region table for sample 3 : pool 16

From [s]	To [s]	Average Size [bp]	Molarity [pmol/l]	Conc. [pg/μl]	Corr. Area % of Total	Size distribution in CV [%]	Color	
60.61	95.52	512	1,300,686.8	392,260.06	35,809.1	98	24.1	■

Assay Class: High Sensitivity DNA Assay
 Data Path: C:\...ents and Settings\Bioanalyzer\2013-08-06\2013-08-06_001.xad

Created: 8/6/2013 9:42:24 AM
 Modified: 8/6/2013 10:23:47 AM

Electropherogram Summary Continued ...



Overall Results for sample 4 : pool 16

Number of peaks found: 19 Corr. Area 1: 249.9
 Noise: 0.3

Peak table for sample 4 : pool 16

Peak	Size [bp]	Conc. [pg/μl]	Molarity [pmol/l]	Observations
1	35	125.00	5,411.3	Lower Marker
2	428	3.72	13.2	
3	467	5.09	16.5	
4	497	6.38	19.5	
5	526	5.71	16.4	
6	593	10.39	26.6	
7	624	6.14	14.9	
8	667	9.48	21.5	
9	697	7.24	15.7	
10	980	11.92	18.4	
11	1,024	10.58	15.7	
12	1,429	13.13	13.9	
13	2,064	6.37	4.7	
14	2,268	5.82	3.9	
15	2,753	4.25	2.3	
16	3,195	6.34	3.0	
17	6,237	3.04	0.7	
18	7,126	2.64	0.6	
19	10,380	75.00	10.9	Upper Marker
20	12,597	0.00	0.0	
21	13,351	0.00	0.0	

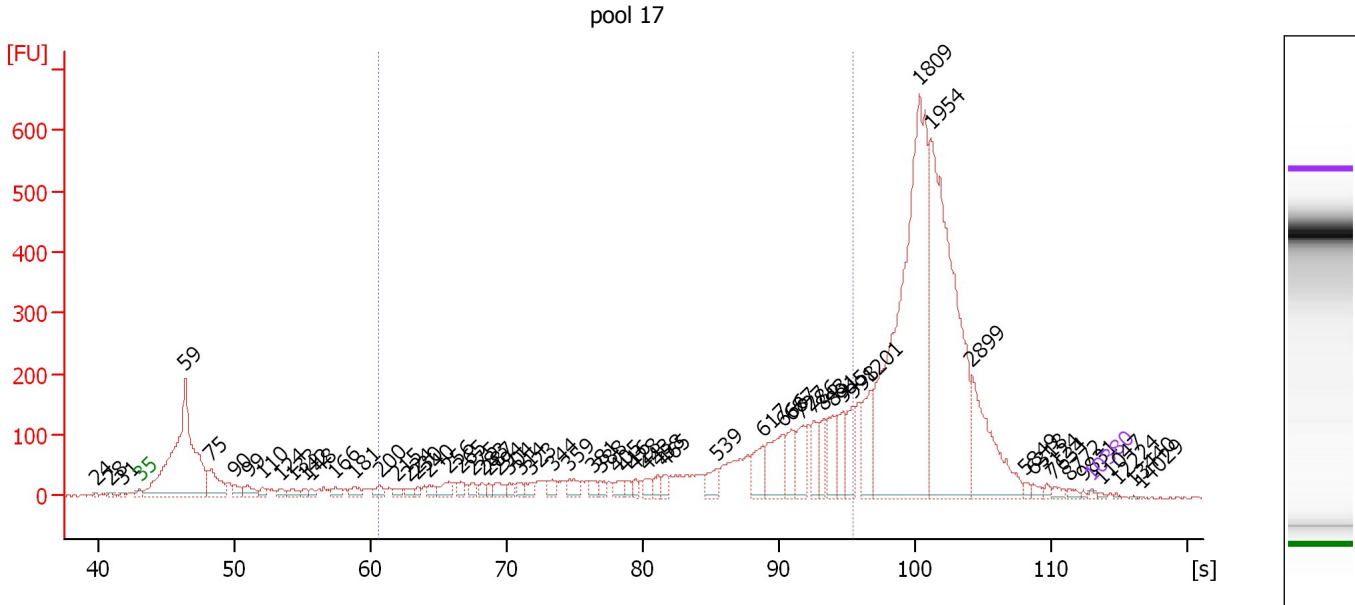
Region table for sample 4 : pool 16

From [s]	To [s]	Average Size [bp]	Molarity [pmol/l]	Conc. [pg/μl]	Corr. Area % of Total	Size distribution in CV [%]	Color
60.61	95.52	600	681.5	231.81	249.9 56	31.8	Blue

Assay Class: High Sensitivity DNA Assay
 Data Path: C:\...ents and Settings\Bioanalyzer\2013-08-06\2013-08-06_001.xad

Created: 8/6/2013 9:42:24 AM
 Modified: 8/6/2013 10:23:47 AM

Electropherogram Summary Continued ...



Overall Results for sample 5 : pool 17

Number of peaks found: 62 Corr. Area 1: 2,182.6
 Noise: 2.0

Peak table for sample 5 : pool 17

Peak	Size [bp]	Conc. [pg/μl]	Molarity [pmol/l]	Observations
1	24	0.00	0.0	
2	28	0.00	0.0	
3	31	0.00	0.0	
4	35	125.00	5,411.3	Lower Marker
5	59	17,586.36	452,592.1	
6	75	2,400.49	48,174.6	
7	90	652.73	10,941.2	
8	99	877.25	13,419.3	
9	110	387.62	5,318.3	
10	124	387.40	4,747.3	
11	133	533.15	6,067.3	
12	142	277.40	2,955.2	
13	148	283.09	2,906.1	
14	166	474.82	4,329.3	
15	181	520.34	4,344.8	
16	200	469.79	3,550.7	
17	215	307.17	2,169.1	
18	224	324.85	2,201.8	
19	230	253.46	1,666.9	
20	240	371.35	2,342.4	
21	256	748.12	4,427.5	
22	265	398.75	2,280.0	
23	275	430.02	2,370.8	
24	283	326.47	1,750.9	
25	287	296.52	1,566.6	
26	294	567.76	2,921.3	

Assay Class: High Sensitivity DNA Assay
 Data Path: C:\...ents and Settings\Bioanalyzer\2013-08-06\2013-08-06_001.xad


Created: 8/6/2013 9:42:24 AM
 Modified: 8/6/2013 10:23:47 AM

Electropherogram Summary Continued ...

... Peak table for sample 5 : pool 17

Peak	Size [bp]	Conc. [pg/µl]	Molarity [pmol/l]	Observations
27	304	381.07	1,896.3	
28	314	340.11	1,639.3	
29	323	406.87	1,907.2	
30	344	512.31	2,253.4	
31	359	663.93	2,800.0	
32	381	411.71	1,637.3	
33	388	278.22	1,085.3	
34	405	449.04	1,679.1	
35	416	278.69	1,016.0	
36	428	284.52	1,007.1	
37	443	416.57	1,423.8	
38	458	423.10	1,400.2	
39	465	377.91	1,230.2	
40	539	755.52	2,124.1	
41	617	1,326.14	3,255.3	
42	666	2,207.38	5,020.8	
43	687	1,294.17	2,853.1	
44	727	1,428.76	2,979.7	
45	786	1,181.73	2,278.0	
46	843	954.83	1,716.9	
47	891	1,340.99	2,281.0	
48	945	1,342.57	2,153.6	
49	998	1,381.85	2,097.2	
50	1,201	1,775.30	2,239.7	
51	1,809	18,005.01	15,081.8	
52	1,954	13,727.39	10,643.4	
53	2,899	3,895.20	2,036.0	
54	5,849	165.82	43.0	
55	6,318	190.50	45.7	
56	7,124	118.75	25.3	
57	7,634	187.36	37.2	
58	8,772	142.14	24.6	
59	9,831	57.42	8.9	
60	10,380	75.00	10.9	Upper Marker
61	11,047	0.00	0.0	
62	12,224	0.00	0.0	
63	13,440	0.00	0.0	
64	14,029	0.00	0.0	

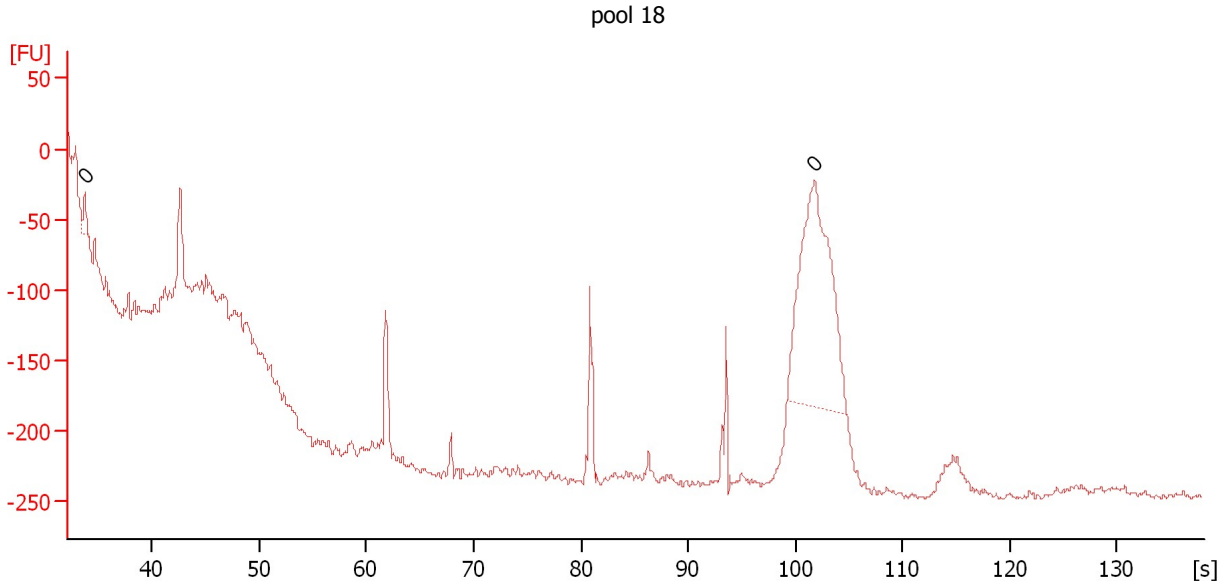
Region table for sample 5 : pool 17

From [s]	To [s]	Average Size [bp]	Molarity [pmol/l]	Conc. [pg/µl]	Corr. Area % of Total	Size distribution in CV [%]	Color	
60.61	95.52	610	91,440.0	28,296.35	2,182.6	29	35.8	

Assay Class: High Sensitivity DNA Assay
Data Path: C:\...ents and Settings\Bioanalyzer\2013-08-06\2013-08-06_001.xad

Created: 8/6/2013 9:42:24 AM
Modified: 8/6/2013 10:23:47 AM

Electropherogram Summary Continued ...



Overall Results for sample 6 : pool 18

Number of peaks found: 0 Noise: 2.6

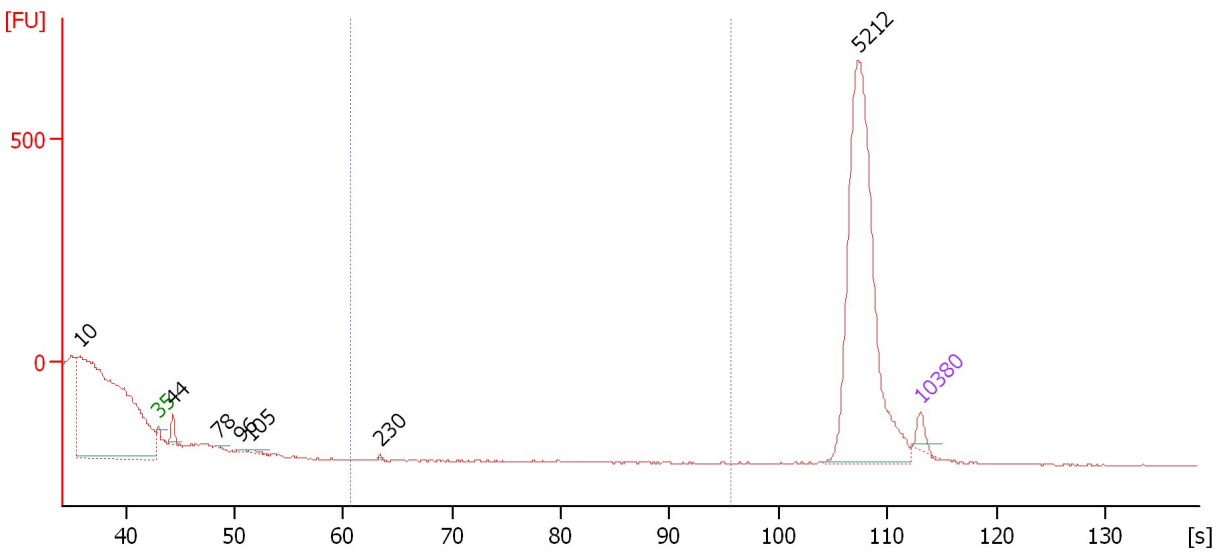
Peak table for sample 6 : pool 18

Peak	Size [bp]	Conc. [pg/µl]	Molarity [pmol/l]	Observations
1	0	0.00	0.0	
2	0	0.00	0.0	

Assay Class: High Sensitivity DNA Assay
 Data Path: C:\...ents and Settings\Bioanalyzer\2013-08-06\2013-08-06_001.xad

Created: 8/6/2013 9:42:24 AM
 Modified: 8/6/2013 10:23:47 AM

Electropherogram Summary Continued ...



Overall Results for sample 7 :

Number of peaks found: 7 Corr. Area 1: 0.0
 Noise: 1.6

Peak table for sample 7 :

Peak	Size [bp]	Conc. [pg/μl]	Molarity [pmol/l]	Observations
1	10	0.00	0.0	
2	35	125.00	5,411.3	Lower Marker
3	44	155.18	5,404.5	
4	78	21.71	422.8	
5	96	14.87	233.8	
6	105	33.14	478.5	
7	230	12.49	82.3	
8	5,212	2,792.79	811.9	
9	10,380	75.00	10.9	Upper Marker

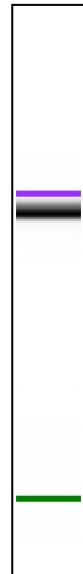
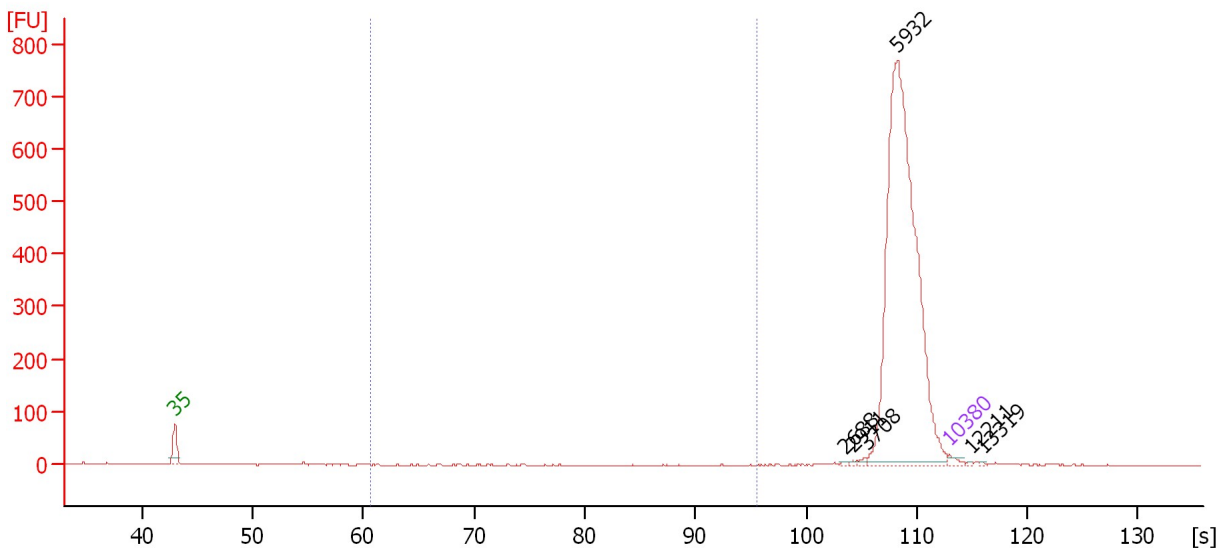
Region table for sample 7 :

From [s]	To [s]	Average Size [bp]	Molarity [pmol/l]	Conc. [pg/μl]	Corr. Area % of Total	Size distribution in CV [%]	Color
60.61	95.52	0	0.0	0.00	0.0	0.0	Blue

Assay Class: High Sensitivity DNA Assay
 Data Path: C:\...ents and Settings\Bioanalyzer\2013-08-06\2013-08-06_001.xad

Created: 8/6/2013 9:42:24 AM
 Modified: 8/6/2013 10:23:47 AM

Electropherogram Summary Continued ...



Overall Results for sample 8 :

Number of peaks found: 6 Corr. Area 1: 2.1
 Noise: 1.2

Peak table for sample 8 :

Peak	Size [bp]	Conc. [pg/μl]	Molarity [pmol/l]	Observations
1	35	125.00	5,411.3	Lower Marker
2	2,688	22.92	12.9	
3	2,911	24.20	12.6	
4	3,708	38.81	15.9	
5	5,932	10,114.87	2,583.5	
6	10,380	75.00	10.9	Upper Marker
7	12,211	0.00	0.0	
8	13,319	0.00	0.0	

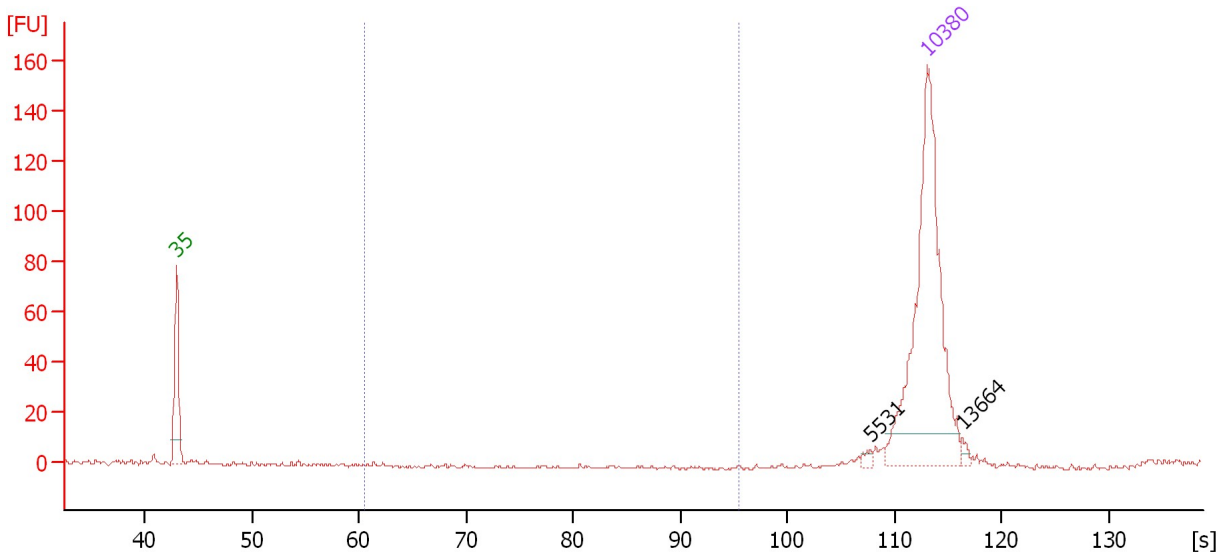
Region table for sample 8 :

From [s]	To [s]	Average Size [bp]	Molarity [pmol/l]	Conc. [pg/μl]	Corr. Area % of Total	Size distribution in CV [%]	Color
60.61	95.52	508	59.1	13.70	2.1	0	51.8

Assay Class: High Sensitivity DNA Assay
 Data Path: C:\...ents and Settings\Bioanalyzer\2013-08-06\2013-08-06_001.xad

Created: 8/6/2013 9:42:24 AM
 Modified: 8/6/2013 10:23:47 AM

Electropherogram Summary Continued ...



Overall Results for sample 9 :

Number of peaks found: 2 Corr. Area 1: 0.0
 Noise: 0.4

Peak table for sample 9 :

Peak	Size [bp]	Conc. [pg/μl]	Molarity [pmol/l]	Observations
1	35	125.00	5,411.3	Lower Marker
2	5,531	1.31	0.4	
3	10,380	75.00	10.9	Upper Marker
4	13,664	0.00	0.0	

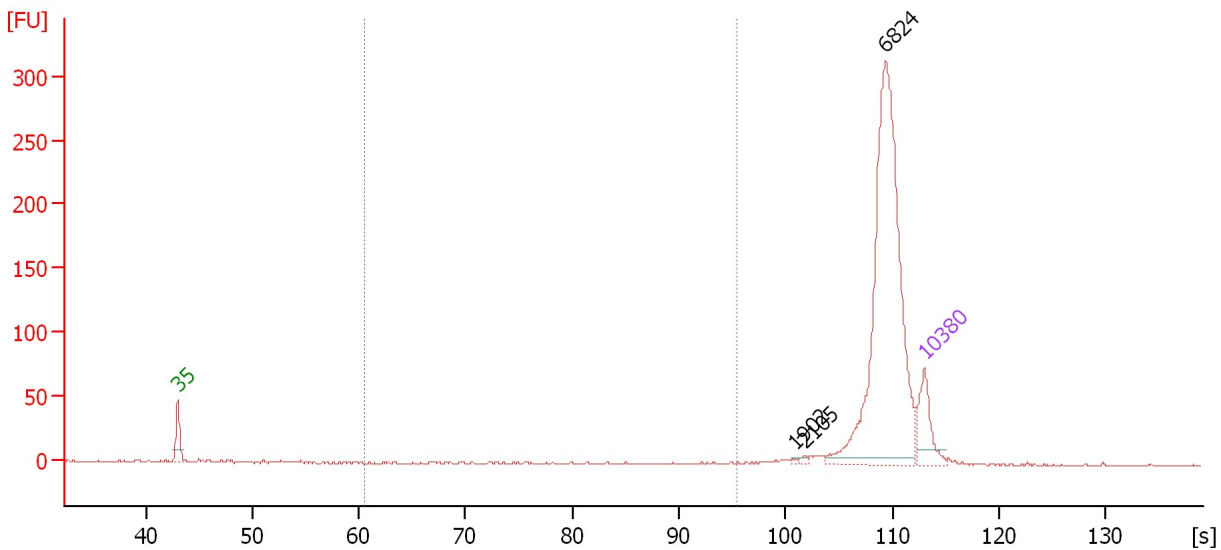
Region table for sample 9 :

From [s]	To [s]	Average Size [bp]	Molarity [pmol/l]	Conc. [pg/μl]	Corr. Area % of Total	Size distribution in CV [%]	Color
60.61	95.52	0	0.0	0.00	0.0	0.0	Blue

Assay Class: High Sensitivity DNA Assay
 Data Path: C:\...ents and Settings\Bioanalyzer\2013-08-06\2013-08-06_001.xad

Created: 8/6/2013 9:42:24 AM
 Modified: 8/6/2013 10:23:47 AM

Electropherogram Summary Continued ...



Overall Results for sample 10 :

Number of peaks found: 3 Corr. Area 1: 0.6
 Noise: 0.3

Peak table for sample 10 :

Peak	Size [bp]	Conc. [pg/μl]	Molarity [pmol/l]	Observations
1	35	125.00	5,411.3	Lower Marker
2	1,902	2.66	2.1	
3	2,105	4.41	3.2	
4	6,824	754.08	167.4	
5	10,380	75.00	10.9	Upper Marker

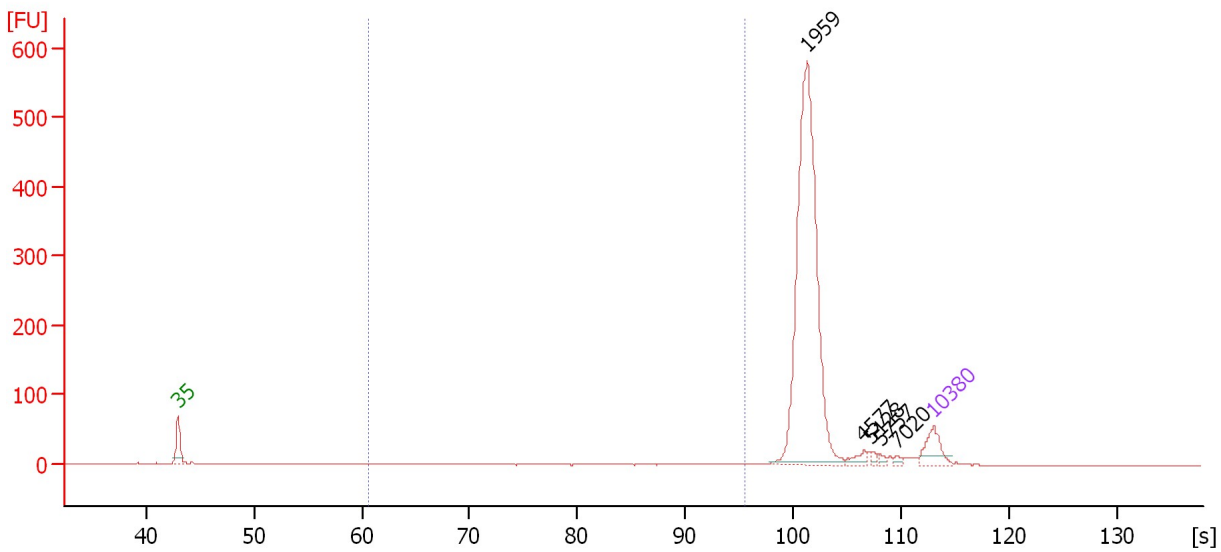
Region table for sample 10 :

From [s]	To [s]	Average Size [bp]	Molarity [pmol/l]	Conc. [pg/μl]	Corr. Area	% of Total	Size distribution in CV [%]	Color
60.61	95.52	778	1.4	0.62	0.6	0	27.4	Blue

Assay Class: High Sensitivity DNA Assay
 Data Path: C:\...ents and Settings\Bioanalyzer\2013-08-06\2013-08-06_001.xad

Created: 8/6/2013 9:42:24 AM
 Modified: 8/6/2013 10:23:47 AM

Electropherogram Summary Continued ...



Overall Results for sample 11 :

Number of peaks found: 5 Corr. Area 1: 21.1
 Noise: 0.6

Peak table for sample 11 :

Peak	Size [bp]	Conc. [pg/μl]	Molarity [pmol/l]	Observations
1	35	125.00	5,411.3	Lower Marker
2	1,959	1,194.80	923.9	
3	4,577	25.53	8.5	
4	5,128	10.80	3.2	
5	5,757	10.18	2.7	
6	7,020	8.50	1.8	
7	10,380	75.00	10.9	Upper Marker

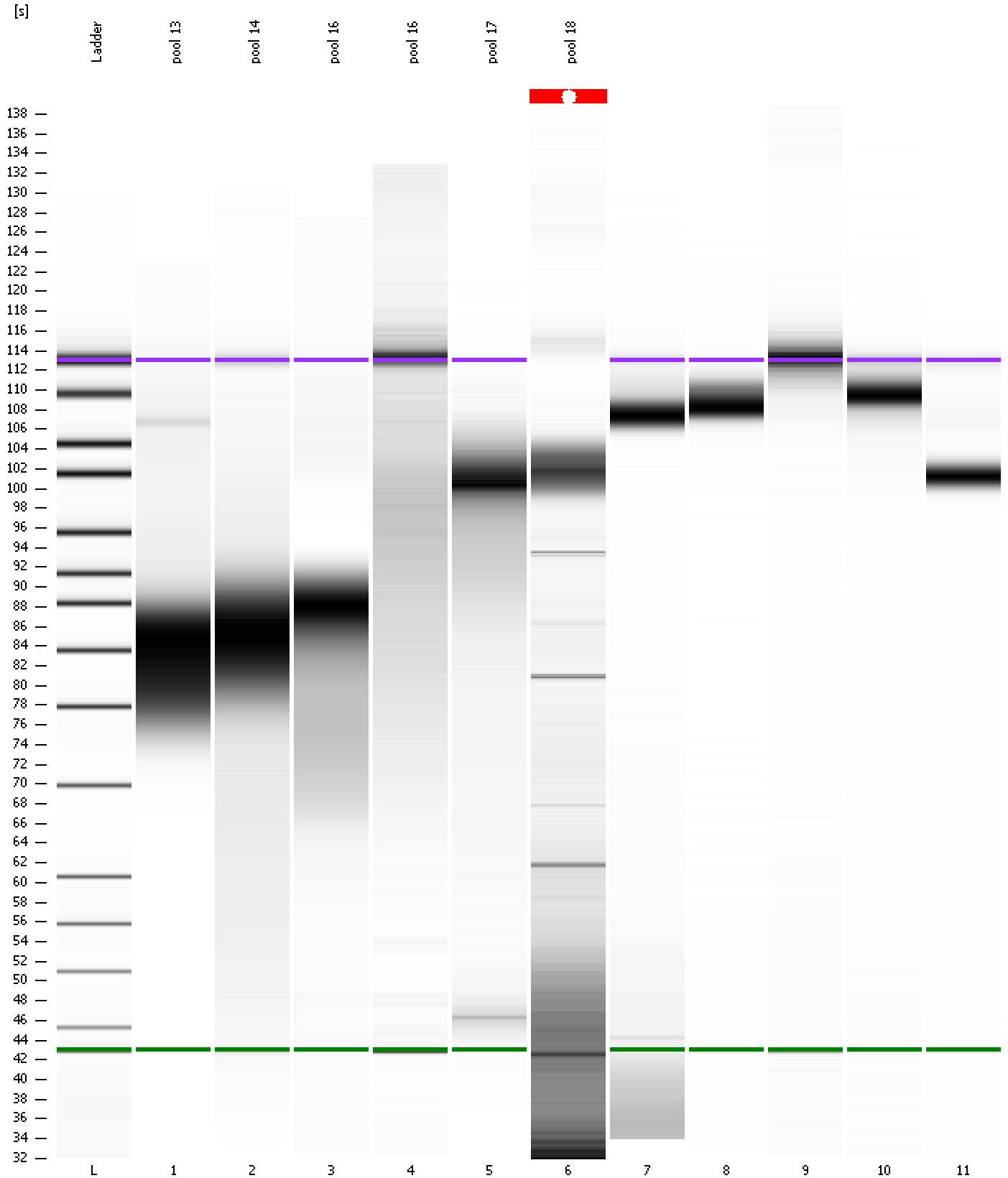
Region table for sample 11 :

From [s]	To [s]	Average Size [bp]	Molarity [pmol/l]	Conc. [pg/μl]	Corr. Area % of Total	Size distribution in CV [%]	Color
60.61	95.52	534	110.5	28.82	21.1	2	44.1

Assay Class: High Sensitivity DNA Assay
Data Path: C:\...ents and Settings\Bioanalyzer\2013-08-06\2013-08-06_001.xad

Created: 8/6/2013 9:42:24 AM
Modified: 8/6/2013 10:23:47 AM

Gel Image



Assay Class: High Sensitivity DNA Assay
 Data Path: C:\...ents and Settings\Bioanalyzer\2013-08-06\2013-08-06_001.xad

Created: 8/6/2013 9:42:24 AM
 Modified: 8/6/2013 10:23:47 AM

Run Logbook

Description	Number	Source	Category	Sub Category	Time	Time Zone	User	Host
Run ended on port 1 (Number of wells acquired: 12)		Instrument	Run		8/6/2013 10:23:43 AM	(GMT --07:00) Pacific Standard Time	UC Davis	D8XSMGH1
Run started on port 1 (File: C:\Documents and Settings\Bioanalyzer\2013-08-06\2013-08-06_001.xad)		Instrument	Run		8/6/2013 9:42:30 AM	(GMT --07:00) Pacific Standard Time	UC Davis	D8XSMGH1
Product Number : G2938B		Instrument	Run		8/6/2013 9:42:30 AM	(GMT --07:00) Pacific Standard Time	UC Davis	D8XSMGH1
Name :		Instrument	Run		8/6/2013 9:42:30 AM	(GMT --07:00) Pacific Standard Time	UC Davis	D8XSMGH1
Vendor : Agilent Technologies		Instrument	Run		8/6/2013 9:42:30 AM	(GMT --07:00) Pacific Standard Time	UC Davis	D8XSMGH1
Serial# : DE13701086		Instrument	Run		8/6/2013 9:42:30 AM	(GMT --07:00) Pacific Standard Time	UC Davis	D8XSMGH1
Firmware : C.01.069		Instrument	Run		8/6/2013 9:42:30 AM	(GMT --07:00) Pacific Standard Time	UC Davis	D8XSMGH1
Cartridge : Electrode		Instrument	Run		8/6/2013 9:42:30 AM	(GMT --07:00) Pacific Standard Time	UC Davis	D8XSMGH1