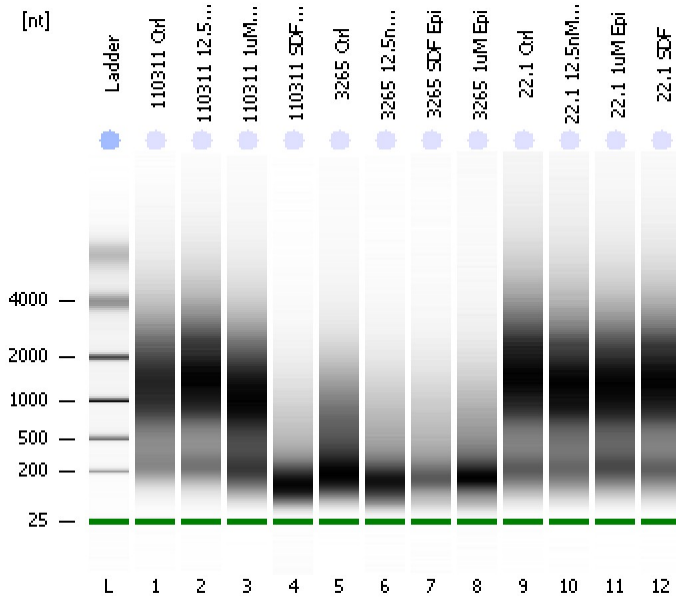


Assay Class: Eukaryote Total RNA Nano
Data Path: C:\...ents and Settings\Bioanalyzer\2013-08-06\2013-08-06_004.xad

Created: 8/6/2013 12:25:54 PM
Modified: 8/6/2013 12:49:47 PM

Electrophoresis File Run Summary



Instrument Information:

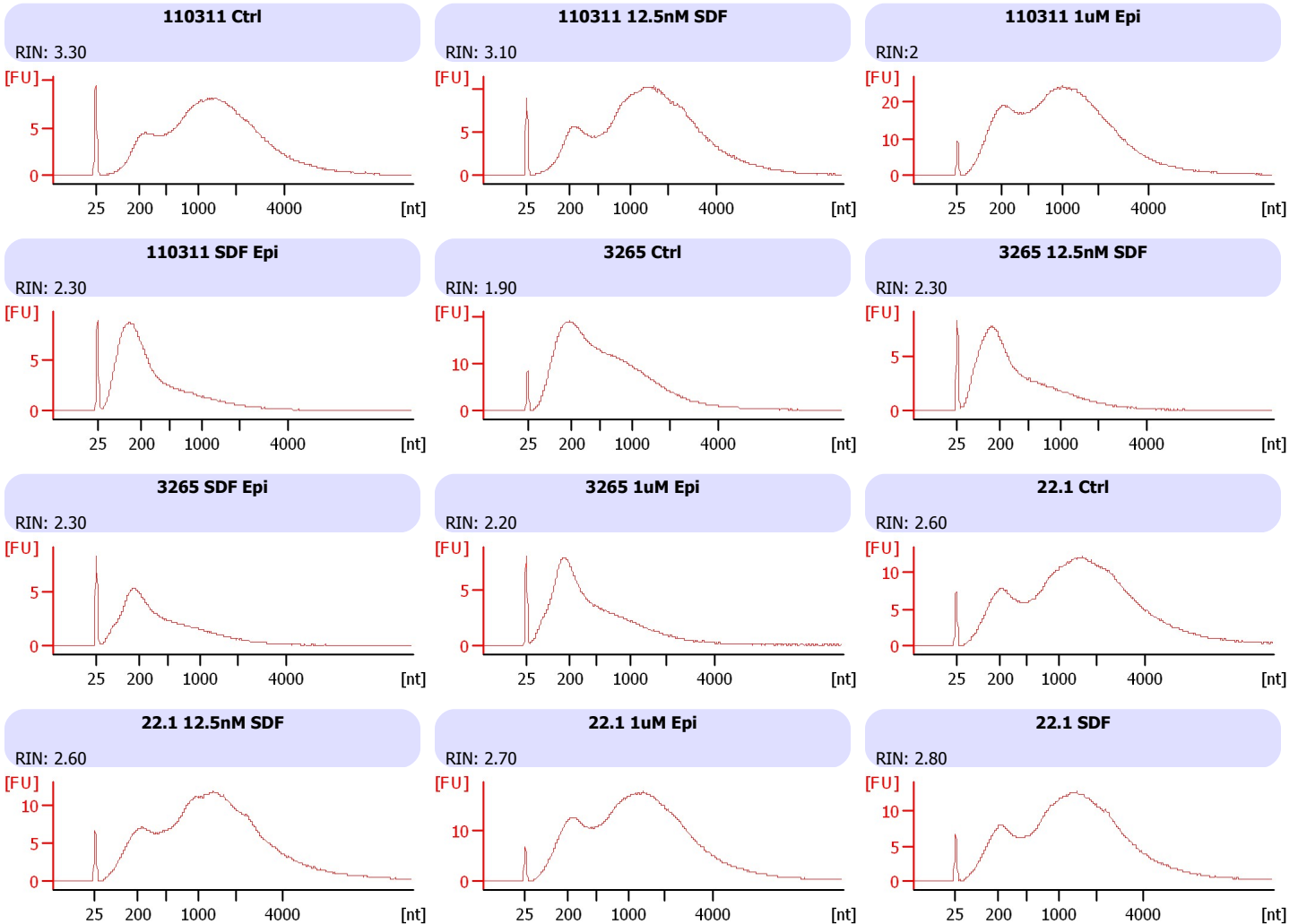
Instrument Name: DE13701086 Firmware: C.01.069
Serial#: DE13701086 Type: G2938B

Assay Information:

Assay Origin Path: C:\Program Files\Agilent\2100 bioanalyzer\2100 expert\assays\RNA\Eukaryote Total RNA Nano Series II.xsy
Assay Class: Eukaryote Total RNA Nano
Version: 2.6
Assay Comments: Total RNA Analysis ng sensitivity (Eukaryote)
© Copyright 2003 - 2009 Agilent Technologies, Inc.

Chip Information:

Chip Lot #:
Reagent Kit Lot #:
Chip Comments:



Assay Class: Eukaryote Total RNA Nano
 Data Path: C:\...ents and Settings\Bioanalyzer\2013-08-06\2013-08-06_004.xad

Created: 8/6/2013 12:25:54 PM
 Modified: 8/6/2013 12:49:47 PM

Electrophoresis File Run Summary (Chip Summary)

Sample Name	Sample Comment	Status	Result Label	Result Color
110311 Ctrl		✓	RIN: 3.30	
110311 12.5nM SDF		✓	RIN: 3.10	
110311 1uM Epi		✓	RIN:2	
110311 SDF Epi		✓	RIN: 2.30	
3265 Ctrl		✓	RIN: 1.90	
3265 12.5nM SDF		✓	RIN: 2.30	
3265 SDF Epi		✓	RIN: 2.30	
3265 1uM Epi		✓	RIN: 2.20	
22.1 Ctrl		✓	RIN: 2.60	
22.1 12.5nM SDF		✓	RIN: 2.60	
22.1 1uM Epi		✓	RIN: 2.70	
22.1 SDF		✓	RIN: 2.80	
Ladder		✓	All Other Samples	

Chip Lot #

Reagent Kit Lot #

Chip Comments :

Assay Class: Eukaryote Total RNA Nano
Data Path: C:\...ents and Settings\Bioanalyzer\2013-08-06\2013-08-06_004.xad

Created: 8/6/2013 12:25:54 PM
Modified: 8/6/2013 12:49:47 PM

Electrophoresis Assay Details

General Analysis Settings

Number of Available Sample and Ladder Wells (Max.) : 13
Minimum Visible Range [s] : 17
Maximum Visible Range [s] : 70
Start Analysis Time Range [s] : 19
End Analysis Time Range [s] : 69
Ladder Concentration [ng/μl] : 150
Lower Marker Concentration [ng/μl] : 0
Upper Marker Concentration [ng/μl] : 0
Used Lower Marker for Quantitation
Standard Curve Fit is Logarithmic
Show Data Aligned to Lower Marker

Integrator Settings

Integration Start Time [s] : 19
Integration End Time [s] : 69
Slope Threshold : 0.6
Height Threshold [FU] : 0.5
Area Threshold : 0.2
Width Threshold [s] : 0.5
Baseline Plateau [s] : 6

Filter Settings

Filter Width [s] : 0.5
Polynomial Order : 4

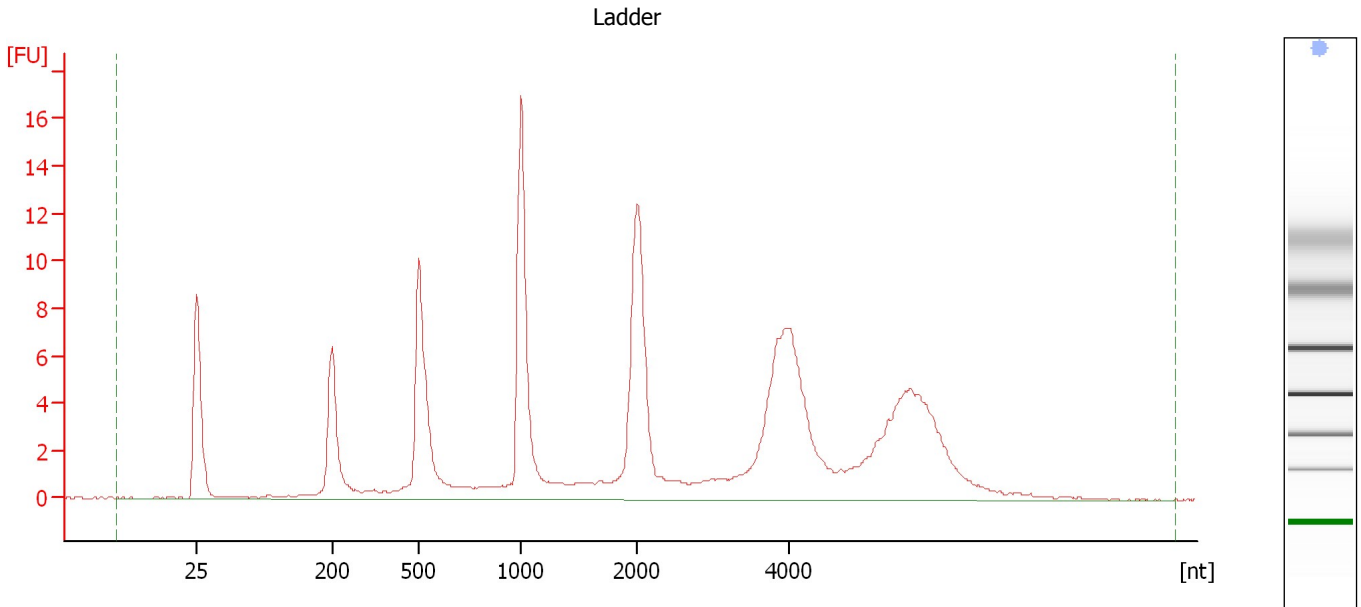
Ladder

Ladder Peak	Size
1	25
2	200
3	500
4	1000
5	2000
6	4000

Assay Class: Eukaryote Total RNA Nano
Data Path: C:\...ents and Settings\Bioanalyzer\2013-08-06\2013-08-06_004.xad

Created: 8/6/2013 12:25:54 PM
Modified: 8/6/2013 12:49:47 PM

Electropherogram Summary



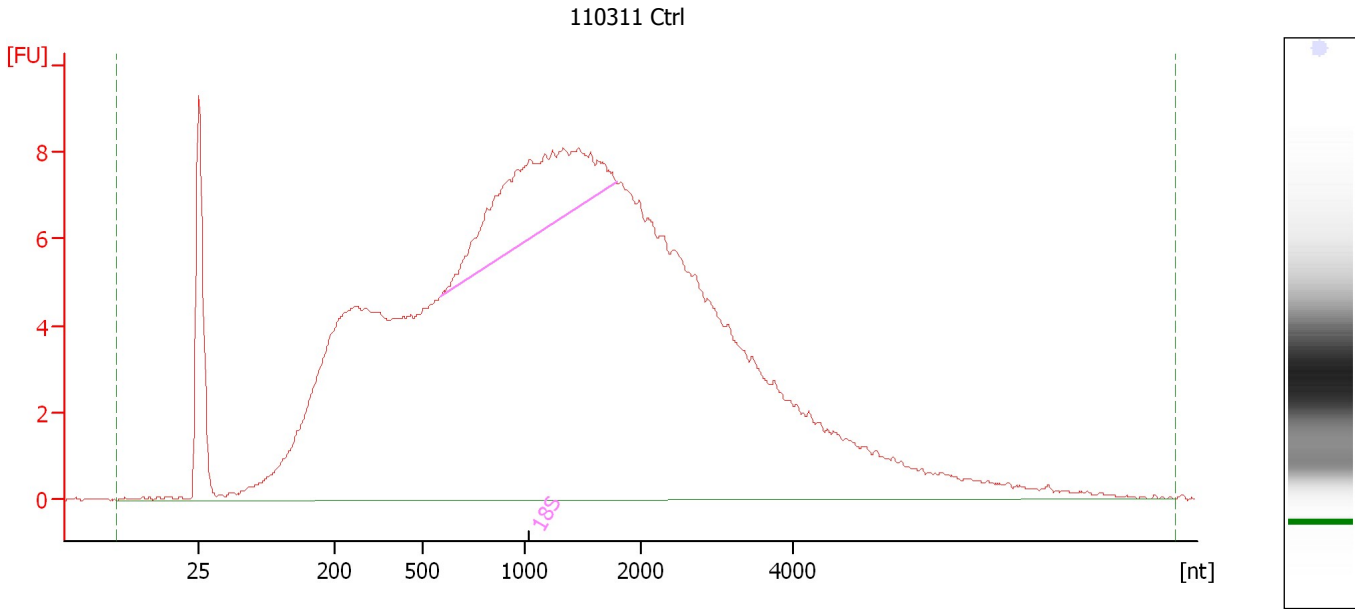
Overall Results for Ladder

RNA Area:	154.6	Result Flagging Color:	
RNA Concentration:	150 ng/ μ l	Result Flagging Label:	All Other Samples

Assay Class: Eukaryote Total RNA Nano
Data Path: C:\...ents and Settings\Bioanalyzer\2013-08-06\2013-08-06_004.xad

Created: 8/6/2013 12:25:54 PM
Modified: 8/6/2013 12:49:47 PM

Electropherogram Summary Continued ...



Overall Results for sample 1 : 110311 Ctrl

RNA Area:	345.9	RNA Integrity Number (RIN):	3.3 (B.02.08)
RNA Concentration:	335 ng/μl	Result Flagging Color:	
rRNA Ratio [28s / 18s]:	0.0	Result Flagging Label:	RIN: 3.30

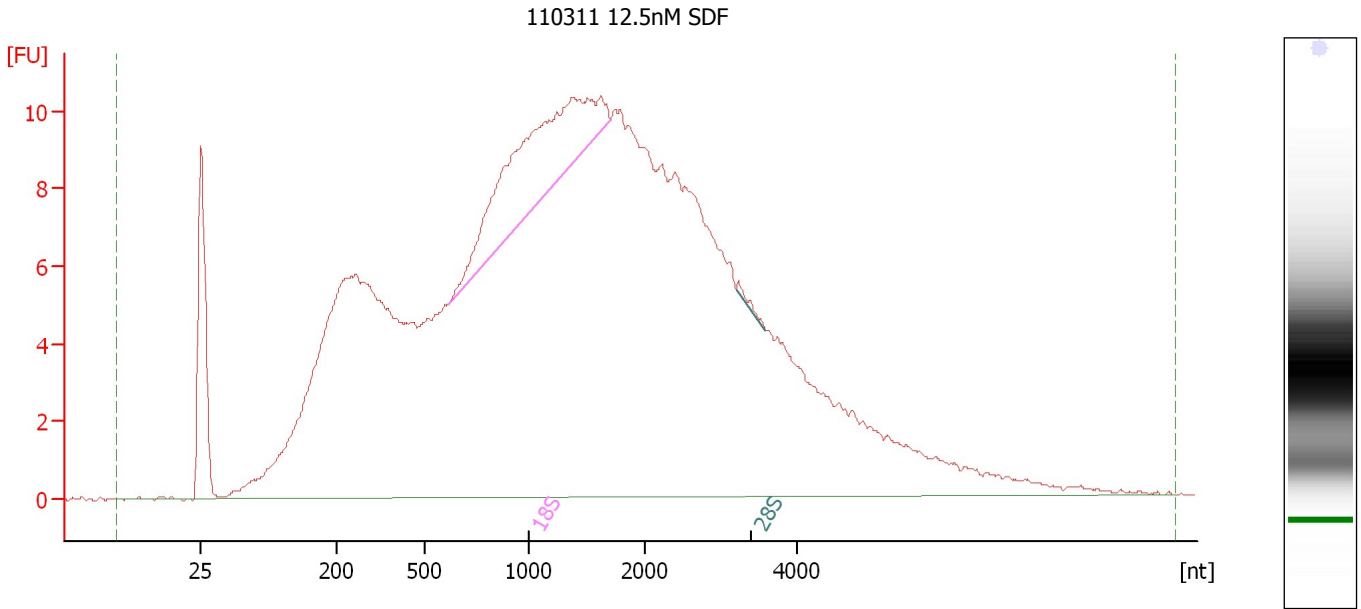
Fragment table for sample 1 : 110311 Ctrl

Name	Start Size [nt]	End Size [nt]	Area	% of total Area
18S	589	1,782	23.0	6.7

Assay Class: Eukaryote Total RNA Nano
Data Path: C:\...ents and Settings\Bioanalyzer\2013-08-06\2013-08-06_004.xad

Created: 8/6/2013 12:25:54 PM
Modified: 8/6/2013 12:49:47 PM

Electropherogram Summary Continued ...



Overall Results for sample 2 : 110311 12.5nM SDF

RNA Area: 440.5 RNA Integrity Number (RIN): 3.1 (B.02.08)
RNA Concentration: 427 ng/μl Result Flagging Color:
rRNA Ratio [28s / 18s]: 0.0 Result Flagging Label: RIN: 3.10

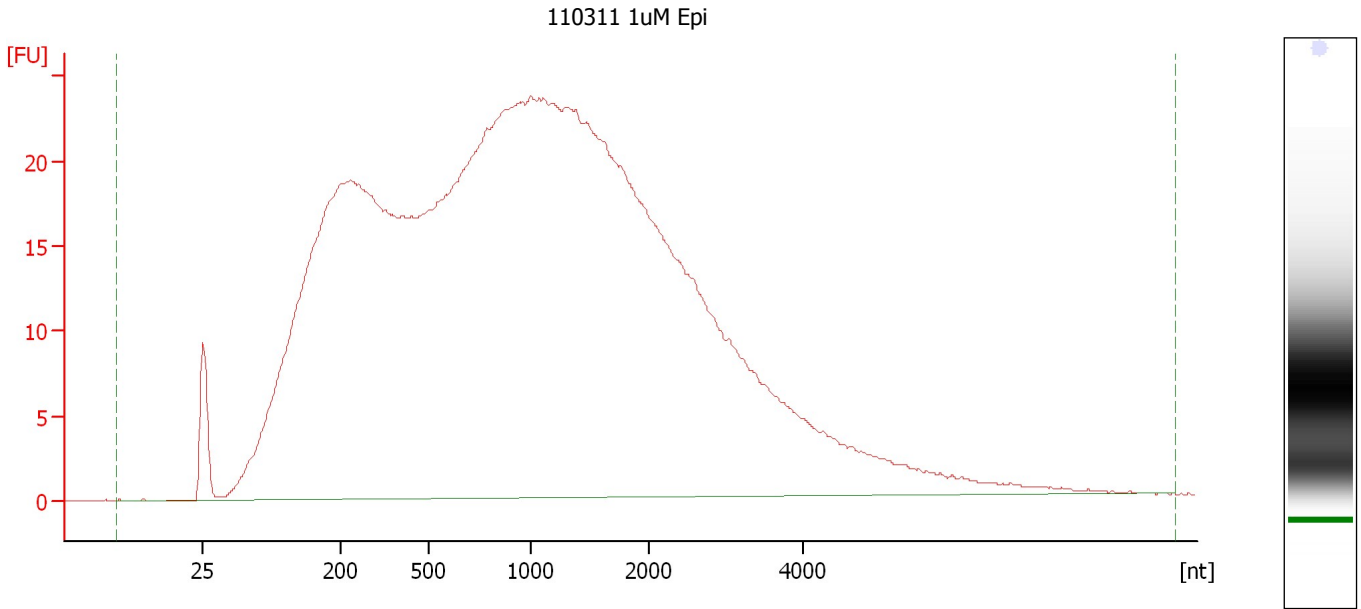
Fragment table for sample 2 : 110311 12.5nM SDF

Name	Start Size [nt]	End Size [nt]	Area	% of total Area
18S	615	1,703	25.5	5.8
28S	3,201	3,581	0.3	0.1

Assay Class: Eukaryote Total RNA Nano
Data Path: C:\...ents and Settings\Bioanalyzer\2013-08-06\2013-08-06_004.xad

Created: 8/6/2013 12:25:54 PM
Modified: 8/6/2013 12:49:47 PM

Electropherogram Summary Continued ...



Overall Results for sample 3 : 110311 1uM Epi

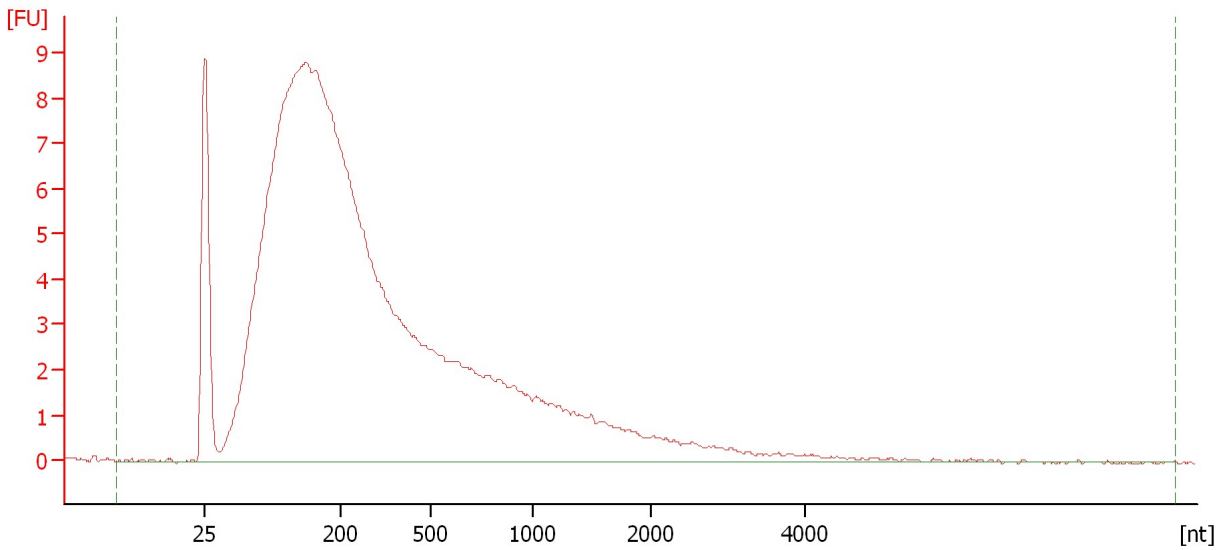
RNA Area:	1,131.3	RNA Integrity Number (RIN):	2 (B.02.08)
RNA Concentration:	1,097 ng/μl	Result Flagging Color:	
rRNA Ratio [28s / 18s]:	0.0	Result Flagging Label:	RIN:2

Assay Class: Eukaryote Total RNA Nano
Data Path: C:\...ents and Settings\Bioanalyzer\2013-08-06\2013-08-06_004.xad

Created: 8/6/2013 12:25:54 PM
Modified: 8/6/2013 12:49:47 PM

Electropherogram Summary Continued ...

110311 SDF Epi



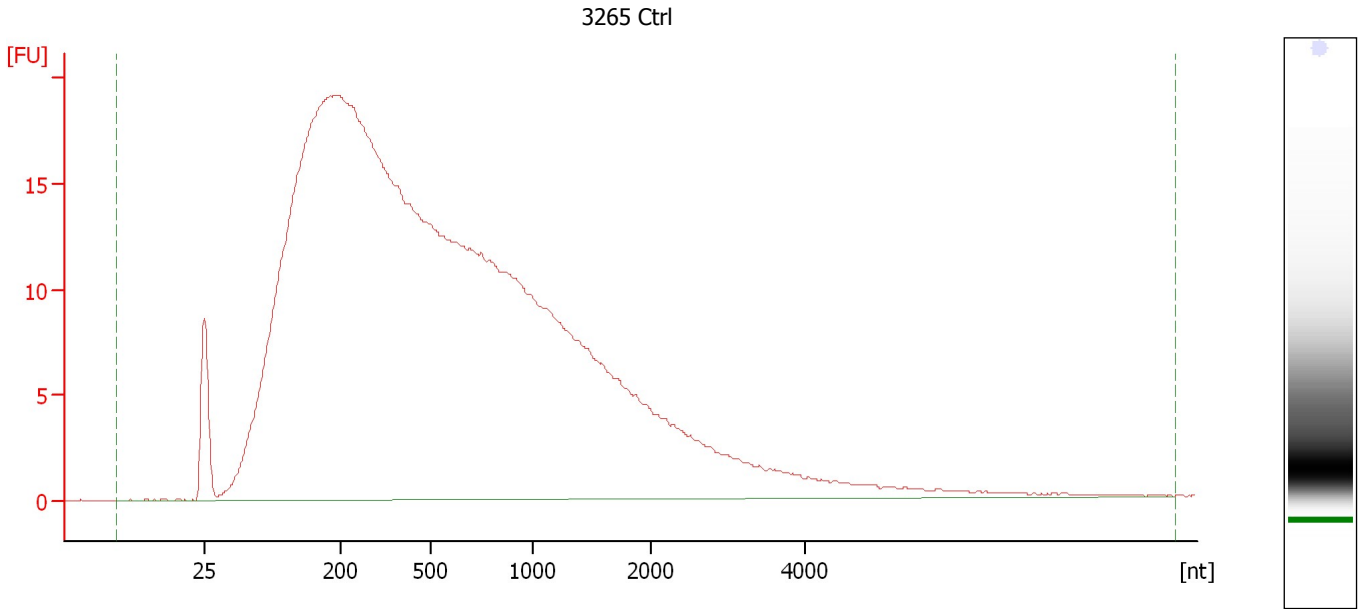
Overall Results for sample 4 : 110311 SDF Epi

RNA Area:	216.0	RNA Integrity Number (RIN):	2.3 (B.02.08)
RNA Concentration:	210 ng/μl	Result Flagging Color:	
rRNA Ratio [28s / 18s]:	0.0	Result Flagging Label:	RIN: 2.30

Assay Class: Eukaryote Total RNA Nano
Data Path: C:\...ents and Settings\Bioanalyzer\2013-08-06\2013-08-06_004.xad

Created: 8/6/2013 12:25:54 PM
Modified: 8/6/2013 12:49:47 PM

Electropherogram Summary Continued ...



Overall Results for sample 5 : 3265 Ctrl

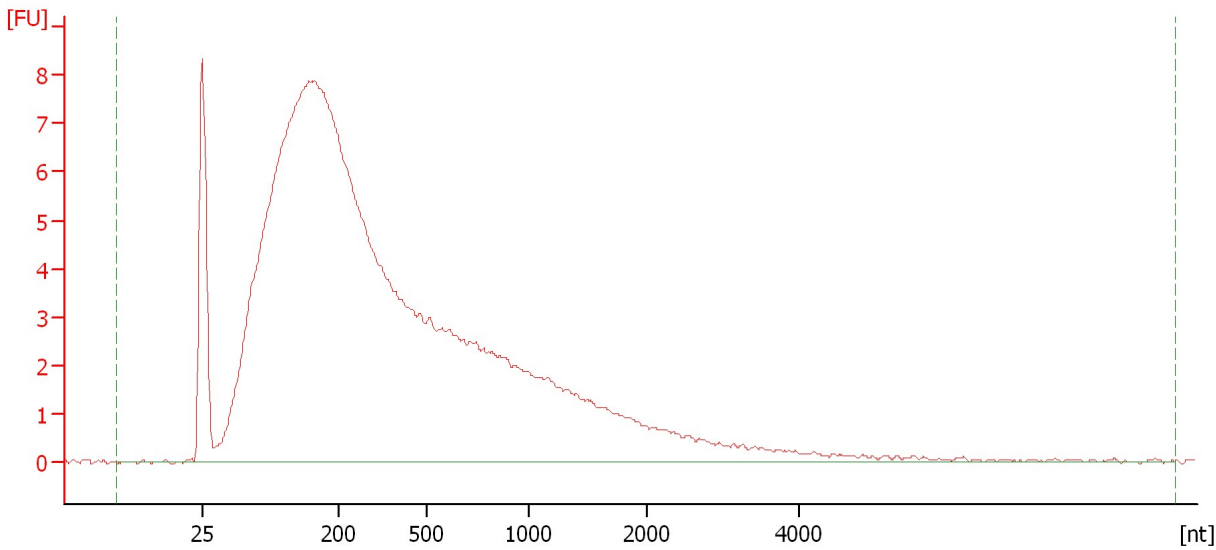
RNA Area:	701.6	RNA Integrity Number (RIN):	1.9 (B.02.08)
RNA Concentration:	681 ng/μl	Result Flagging Color:	
rRNA Ratio [28s / 18s]:	0.0	Result Flagging Label:	RIN: 1.90

Assay Class: Eukaryote Total RNA Nano
Data Path: C:\...ents and Settings\Bioanalyzer\2013-08-06\2013-08-06_004.xad

Created: 8/6/2013 12:25:54 PM
Modified: 8/6/2013 12:49:47 PM

Electropherogram Summary Continued ...

3265 12.5nM SDF



Overall Results for sample 6 : 3265 12.5nM SDF

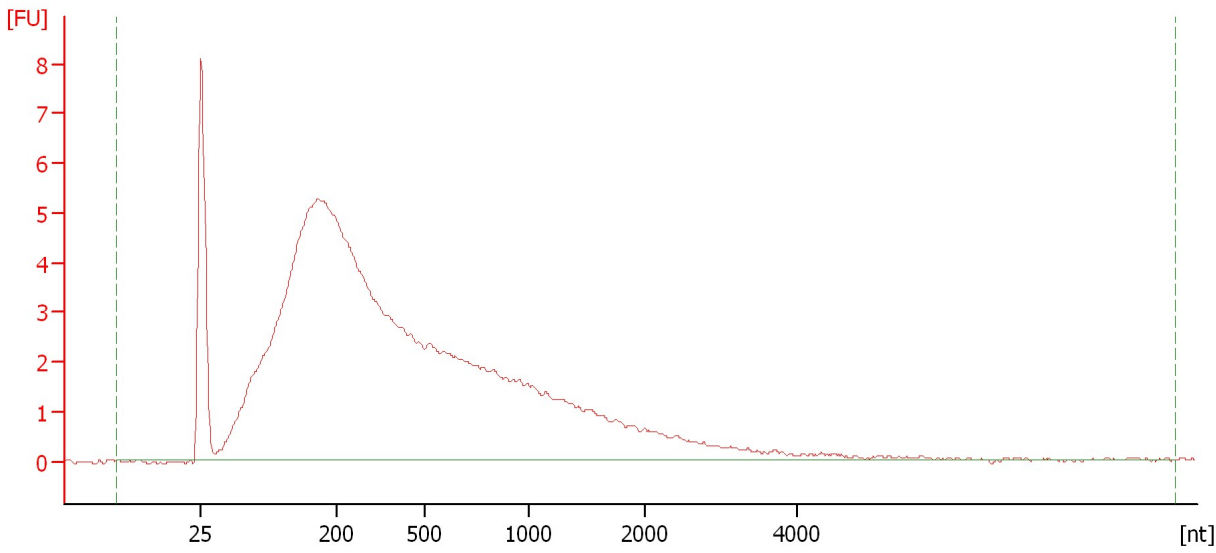
RNA Area:	219.0	RNA Integrity Number (RIN):	2.3 (B.02.08)
RNA Concentration:	212 ng/μl	Result Flagging Color:	
rRNA Ratio [28s / 18s]:	0.0	Result Flagging Label:	RIN: 2.30

Assay Class: Eukaryote Total RNA Nano
Data Path: C:\...ents and Settings\Bioanalyzer\2013-08-06\2013-08-06_004.xad

Created: 8/6/2013 12:25:54 PM
Modified: 8/6/2013 12:49:47 PM

Electropherogram Summary Continued ...

3265 SDF Epi



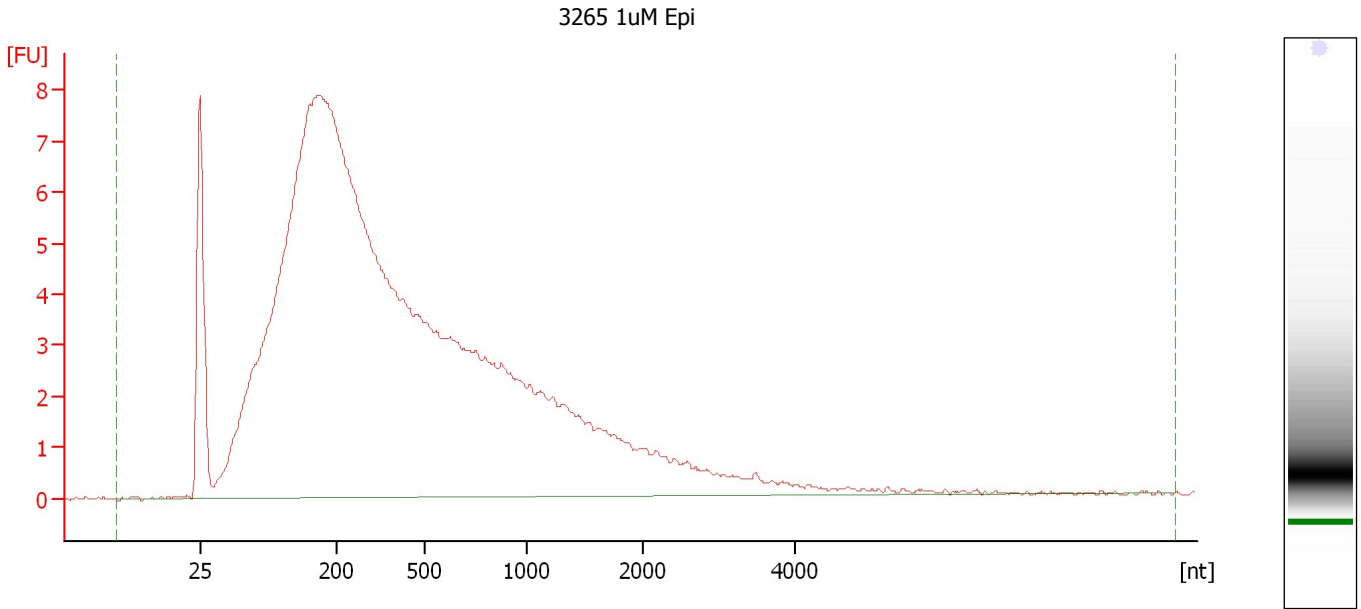
Overall Results for sample 7 : 3265 SDF Epi

RNA Area:	146.7	RNA Integrity Number (RIN):	2.3 (B.02.08)
RNA Concentration:	142 ng/μl	Result Flagging Color:	
rRNA Ratio [28s / 18s]:	0.0	Result Flagging Label:	RIN: 2.30

Assay Class: Eukaryote Total RNA Nano
Data Path: C:\...ents and Settings\Bioanalyzer\2013-08-06\2013-08-06_004.xad

Created: 8/6/2013 12:25:54 PM
Modified: 8/6/2013 12:49:47 PM

Electropherogram Summary Continued ...



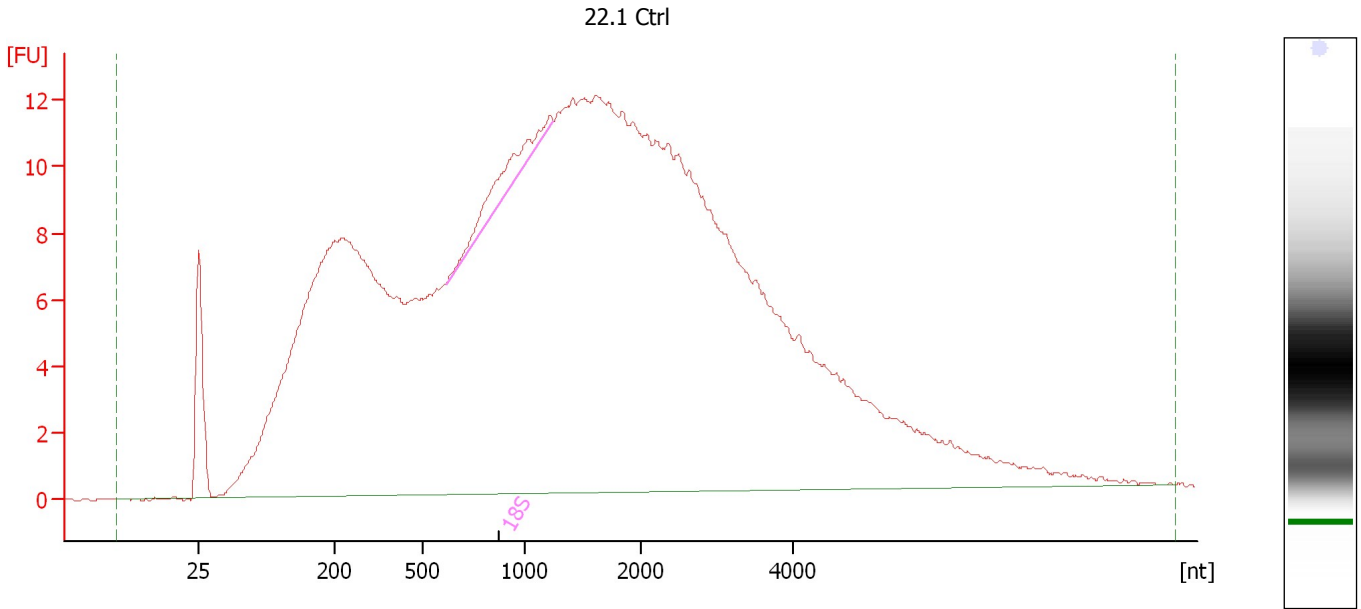
Overall Results for sample 8 : 3265 1uM Epi

RNA Area:	218.9	RNA Integrity Number (RIN):	2.2 (B.02.08)
RNA Concentration:	212 ng/μl	Result Flagging Color:	
rRNA Ratio [28s / 18s]:	0.0	Result Flagging Label:	RIN: 2.20

Assay Class: Eukaryote Total RNA Nano
Data Path: C:\...ents and Settings\Bioanalyzer\2013-08-06\2013-08-06_004.xad

Created: 8/6/2013 12:25:54 PM
Modified: 8/6/2013 12:49:47 PM

Electropherogram Summary Continued ...



Overall Results for sample 9 : 22.1 Ctrl

RNA Area:	571.6	RNA Integrity Number (RIN):	2.6 (B.02.08)
RNA Concentration:	554 ng/μl	Result Flagging Color:	
rRNA Ratio [28s / 18s]:	0.0	Result Flagging Label:	RIN: 2.60

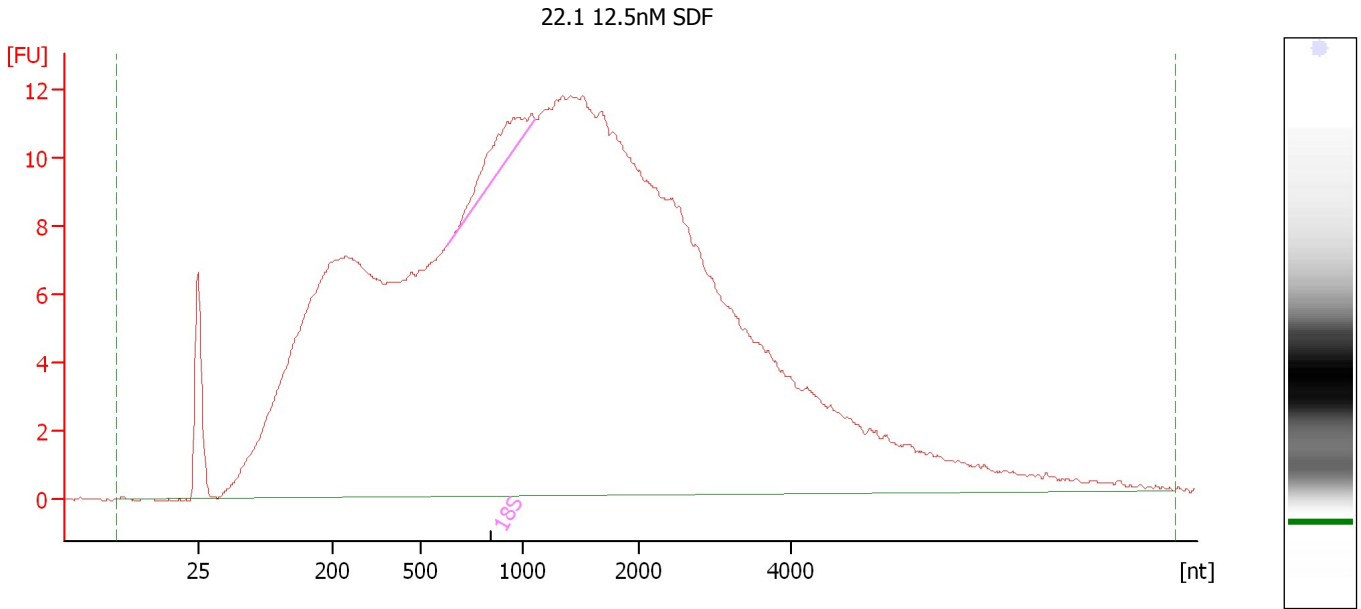
Fragment table for sample 9 : 22.1 Ctrl

Name	Start Size [nt]	End Size [nt]	Area	% of total Area
18S	615	1,246	6.2	1.1

Assay Class: Eukaryote Total RNA Nano
Data Path: C:\...ents and Settings\Bioanalyzer\2013-08-06\2013-08-06_004.xad

Created: 8/6/2013 12:25:54 PM
Modified: 8/6/2013 12:49:47 PM

Electropherogram Summary Continued ...



Overall Results for sample 10 : 22.1 12.5nM SDF

RNA Area: 540.1 RNA Integrity Number (RIN): 2.6 (B.02.08)
RNA Concentration: 524 ng/μl Result Flagging Color:
rRNA Ratio [28s / 18s]: 0.0 Result Flagging Label: RIN: 2.60

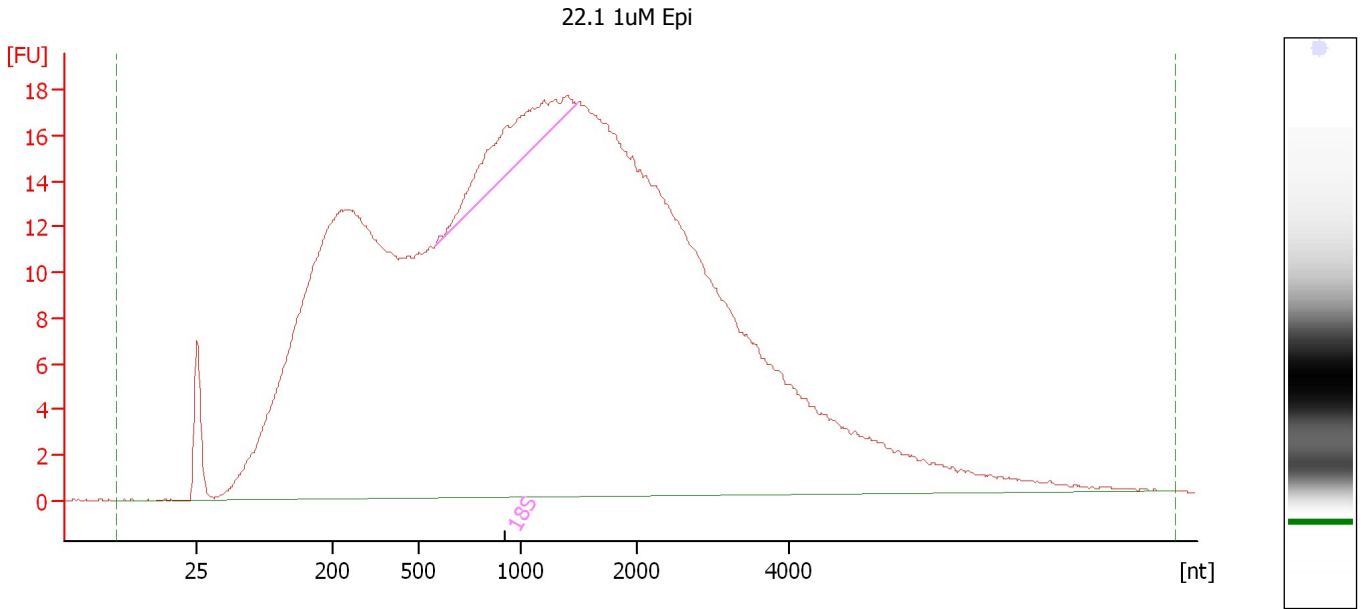
Fragment table for sample 10 : 22.1 12.5nM SDF

Name	Start Size [nt]	End Size [nt]	Area	% of total Area
18S	628	1,110	6.7	1.2

Assay Class: Eukaryote Total RNA Nano
Data Path: C:\...ents and Settings\Bioanalyzer\2013-08-06\2013-08-06_004.xad

Created: 8/6/2013 12:25:54 PM
Modified: 8/6/2013 12:49:47 PM

Electropherogram Summary Continued ...



Overall Results for sample 11 : 22.1 1uM Epi

RNA Area: 835.2 RNA Integrity Number (RIN): 2.7 (B.02.08)
RNA Concentration: 810 ng/μl Result Flagging Color:
rRNA Ratio [28s / 18s]: 0.0 Result Flagging Label: RIN: 2.70

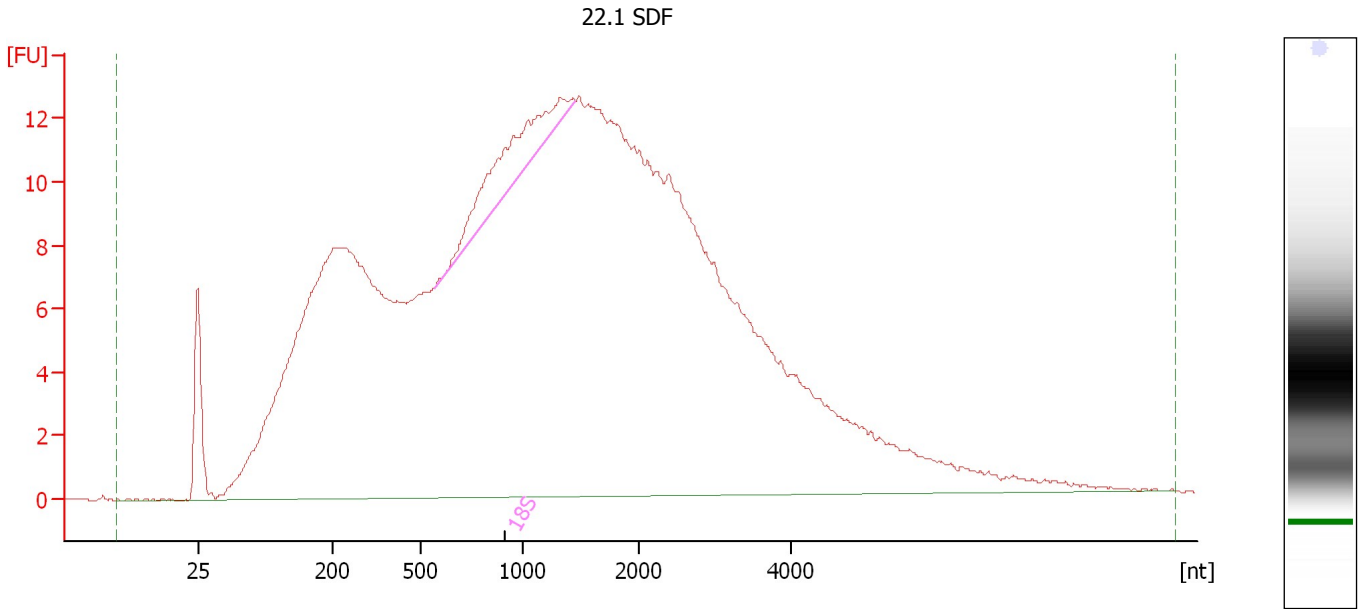
Fragment table for sample 11 : 22.1 1uM Epi

Name	Start Size [nt]	End Size [nt]	Area	% of total Area
18S	578	1,477	21.4	2.6

Assay Class: Eukaryote Total RNA Nano
Data Path: C:\...ents and Settings\Bioanalyzer\2013-08-06\2013-08-06_004.xad

Created: 8/6/2013 12:25:54 PM
Modified: 8/6/2013 12:49:47 PM

Electropherogram Summary Continued ...



Overall Results for sample 12 : 22.1 SDF

RNA Area:	575.1	RNA Integrity Number (RIN):	2.8 (B.02.08)
RNA Concentration:	558 ng/μl	Result Flagging Color:	
rRNA Ratio [28s / 18s]:	0.0	Result Flagging Label:	RIN: 2.80

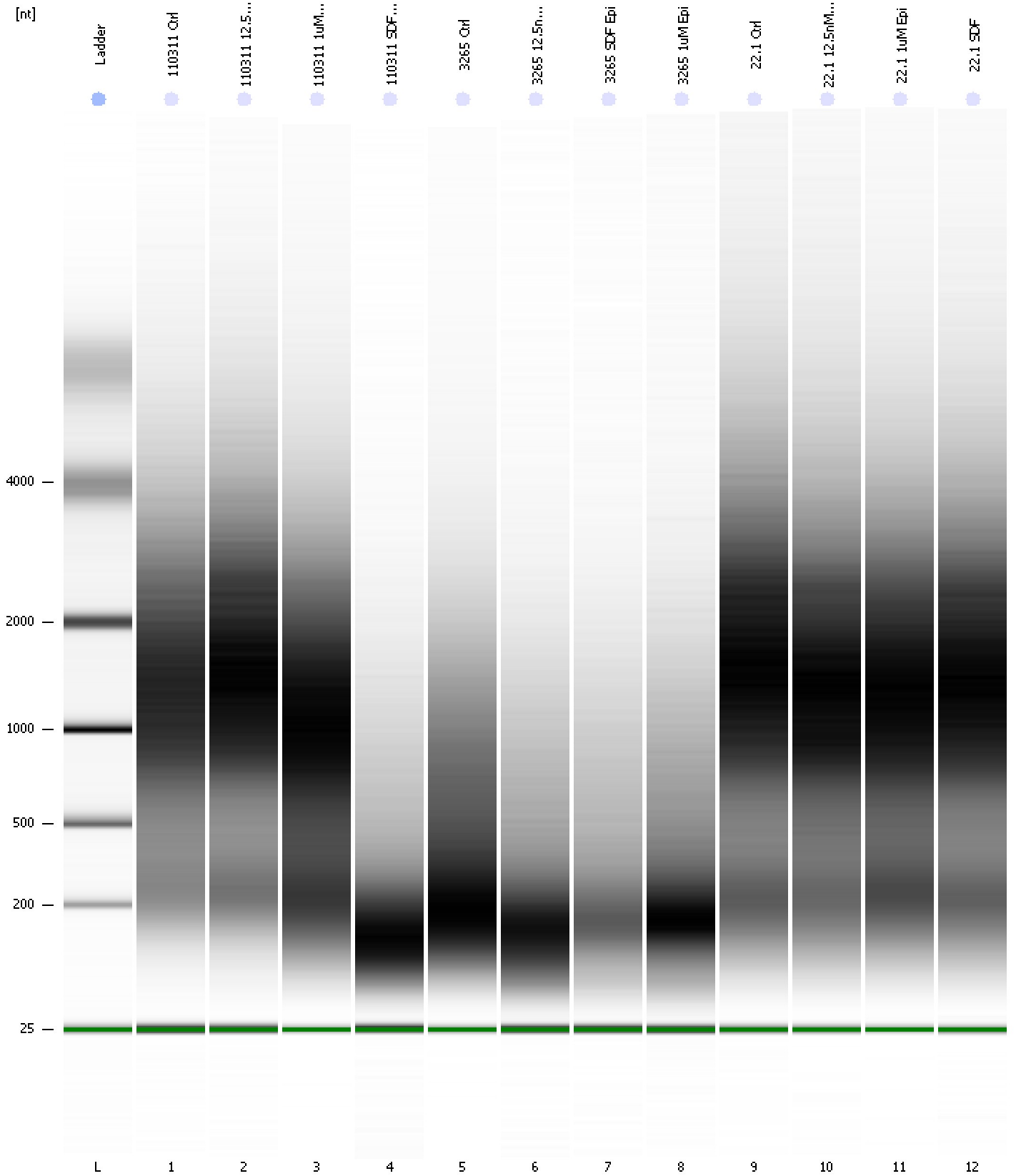
Fragment table for sample 12 : 22.1 SDF

Name	Start Size [nt]	End Size [nt]	Area	% of total Area
18S	571	1,451	14.7	2.5

Assay Class: Eukaryote Total RNA Nano
Data Path: C:\...ents and Settings\Bioanalyzer\2013-08-06\2013-08-06_004.xad

Created: 8/6/2013 12:25:54 PM
Modified: 8/6/2013 12:49:47 PM

Gel Image



Assay Class: Eukaryote Total RNA Nano
 Data Path: C:\...ents and Settings\Bioanalyzer\2013-08-06\2013-08-06_004.xad

Created: 8/6/2013 12:25:54 PM
 Modified: 8/6/2013 12:49:47 PM

Run Logbook

Description	Number	Source	Category	Sub Category	Time	Time Zone	User	Host
Run ended on port 1 (Number of wells acquired: 13)		Instrument	Run		8/6/2013 12:49:44 PM	(GMT --07:00) Pacific Standard Time	UC Davis	D8XSMGH1
Run started on port 1 (File: C:\Documents and Settings\Bioanalyzer\2013-08-06\2013-08-06_004.xad)		Instrument	Run		8/6/2013 12:25:59 PM	(GMT --07:00) Pacific Standard Time	UC Davis	D8XSMGH1
Product Number : G2938B		Instrument	Run		8/6/2013 12:25:59 PM	(GMT --07:00) Pacific Standard Time	UC Davis	D8XSMGH1
Name :		Instrument	Run		8/6/2013 12:25:59 PM	(GMT --07:00) Pacific Standard Time	UC Davis	D8XSMGH1
Vendor : Agilent Technologies		Instrument	Run		8/6/2013 12:25:59 PM	(GMT --07:00) Pacific Standard Time	UC Davis	D8XSMGH1
Serial# : DE13701086		Instrument	Run		8/6/2013 12:25:59 PM	(GMT --07:00) Pacific Standard Time	UC Davis	D8XSMGH1
Firmware : C.01.069		Instrument	Run		8/6/2013 12:25:59 PM	(GMT --07:00) Pacific Standard Time	UC Davis	D8XSMGH1
Cartridge : Electrode		Instrument	Run		8/6/2013 12:25:59 PM	(GMT --07:00) Pacific Standard Time	UC Davis	D8XSMGH1