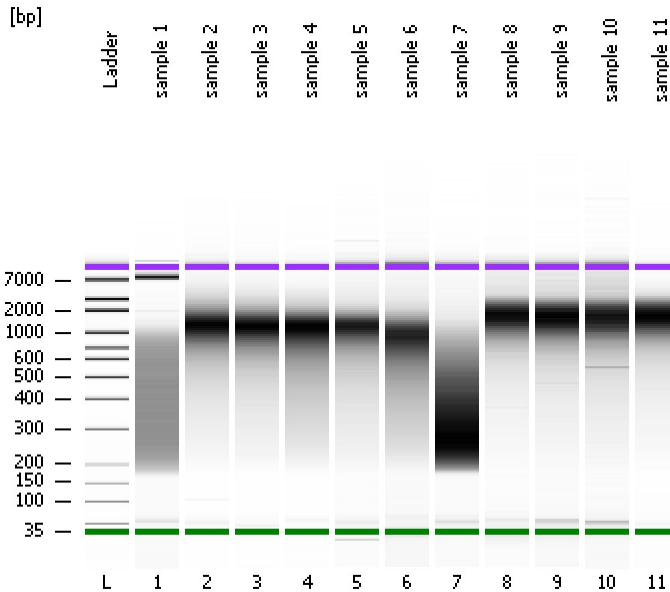


Assay Class: High Sensitivity DNA Assay  
Data Path: C:\...ents and Settings\Bioanalyzer\2013-08-08\2013-08-08\_002.xad

Created: 8/8/2013 11:14:15 AM  
Modified: 8/8/2013 11:56:27 AM

### Electrophoresis File Run Summary



#### Instrument Information:

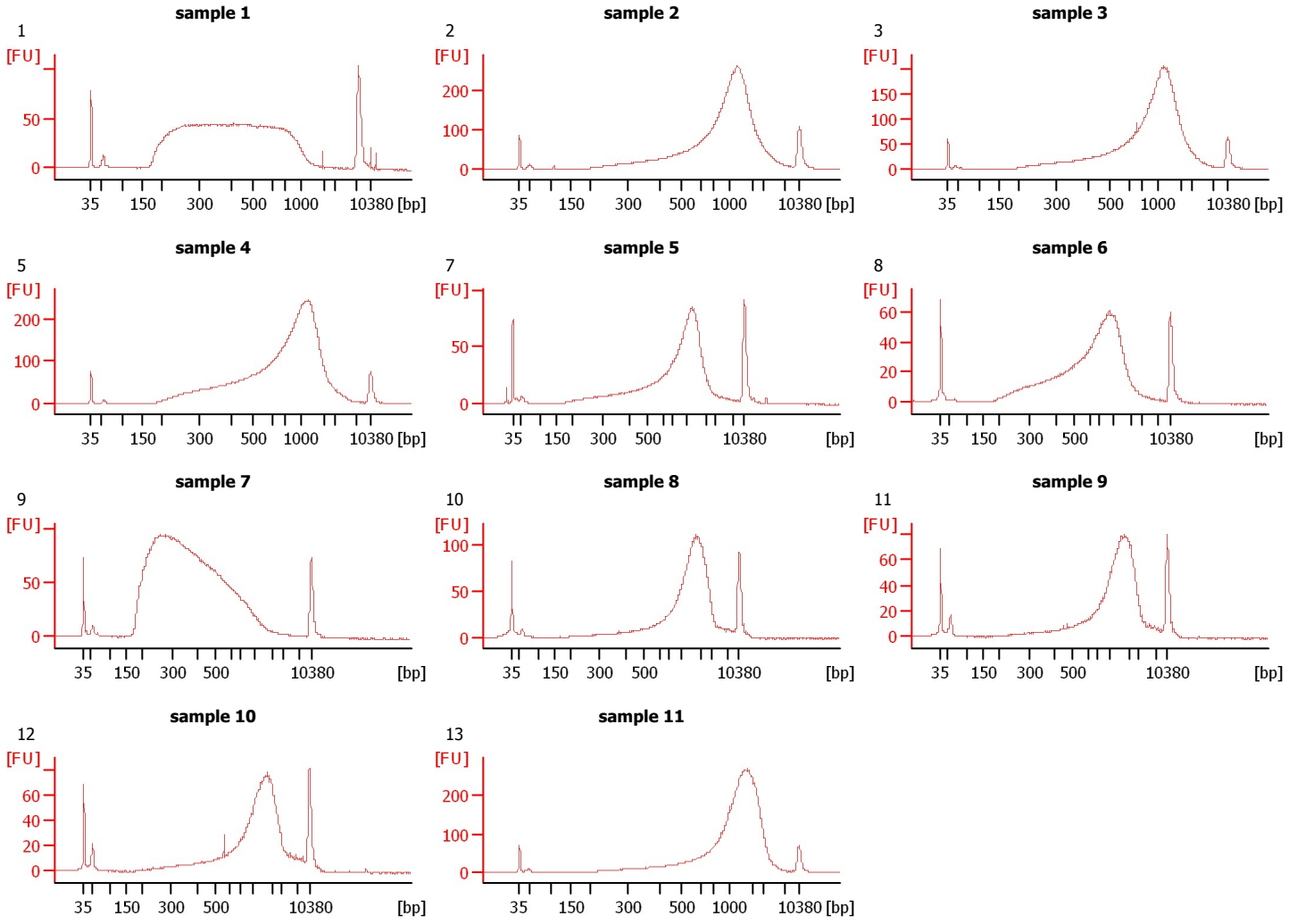
Instrument Name: DE13701086      Firmware: C.01.069  
Serial#: DE13701086      Type: G2938B

#### Assay Information:

Assay Origin Path: C:\Program Files\Agilent\2100 bioanalyzer\2100 expert\assays\dsDNA\High Sensitivity DNA.xsy  
Assay Class: High Sensitivity DNA Assay  
Version: 1.03  
Assay Comments: Copyright © 2003-2010 Agilent Technologies

#### Chip Information:

Chip Lot #:      Reagent Kit Lot #:      Chip Comments:



Assay Class: High Sensitivity DNA Assay  
 Data Path: C:\...ents and Settings\Bioanalyzer\2013-08-08\2013-08-08\_002.xad

Created: 8/8/2013 11:14:15 AM  
 Modified: 8/8/2013 11:56:27 AM

**Electrophoresis File Run Summary (Chip Summary)**

Sample Name	Sample Comment	Rest. Digest	Status	Observation	Result Label	Result Color
sample 1	1	<input type="checkbox"/>	✓			
sample 2	2	<input type="checkbox"/>	✓			
sample 3	3	<input type="checkbox"/>	✓			
sample 4	5	<input type="checkbox"/>	✓			
sample 5	7	<input type="checkbox"/>	✓			
sample 6	8	<input type="checkbox"/>	✓			
sample 7	9	<input type="checkbox"/>	✓			
sample 8	10	<input type="checkbox"/>	✓			
sample 9	11	<input type="checkbox"/>	✓			
sample 10	12	<input type="checkbox"/>	✓			
sample 11	13	<input type="checkbox"/>	✓			
Ladder		<input type="checkbox"/>	✓			

**Chip Lot #**

**Reagent Kit Lot #**

**Chip Comments :**

Assay Class: High Sensitivity DNA Assay  
Data Path: C:\...ents and Settings\Bioanalyzer\2013-08-08\2013-08-08\_002.xad

Created: 8/8/2013 11:14:15 AM  
Modified: 8/8/2013 11:56:27 AM

**Electrophoresis Assay Details**

**General Analysis Settings**

Number of Available Sample and Ladder Wells (Max.) : 12  
Minimum Visible Range [s] : 32  
Maximum Visible Range [s] : 138  
Start Analysis Time Range [s] : 33  
End Analysis Time Range [s] : 137.5  
Ladder Concentration [pg/μl] : 1950  
Uses Standard Area for Ladder Fragments  
Lower Marker Concentration [pg/μl] : 125  
Upper Marker Concentration [pg/μl] : 75  
Used Upper Marker for Quantitation  
Standard Curve Fit is Point to Point  
Show Data Aligned to Lower and Upper Marker

**Integrator Settings**

Integration Start Time [s] : 33.05  
Integration End Time [s] : 137  
Slope Threshold : 0.8  
Height Threshold [FU] : 5  
Area Threshold : 0.1  
Width Threshold [s] : 0.6  
Baseline Plateau [s] : 0.5

**Filter Settings**

Filter Width [s] : 0.5  
Polynomial Order : 4

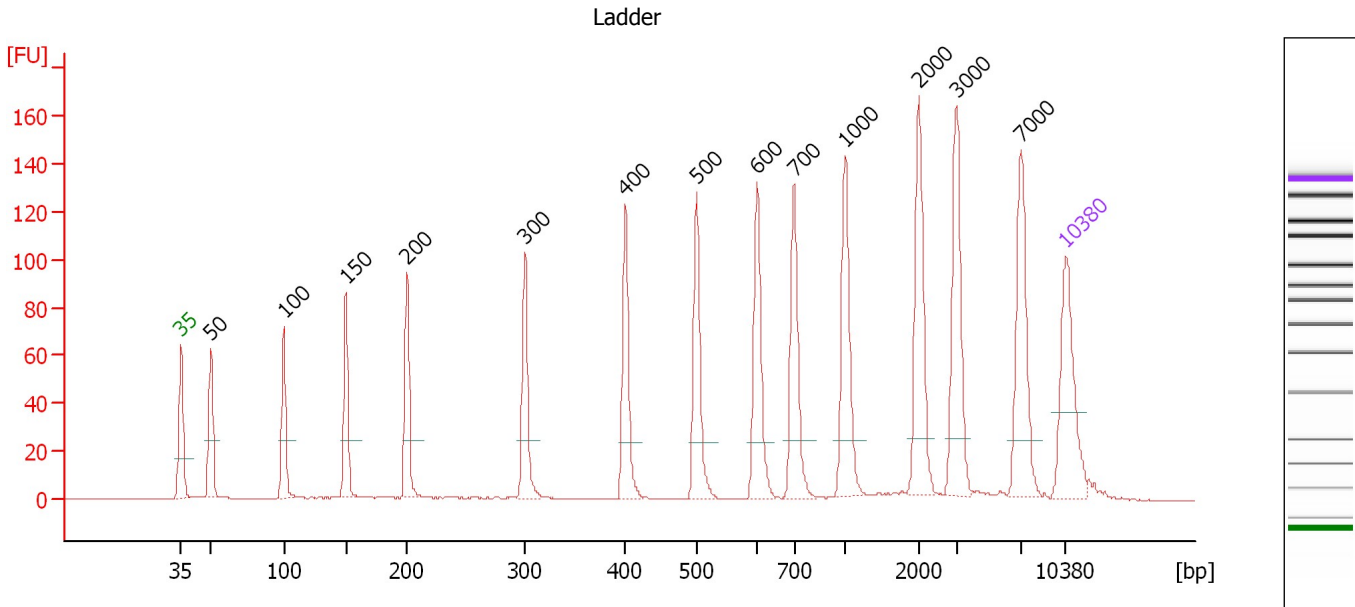
**Ladder**

Ladder Peak	Size	Area
1	35	160
2	50	210
3	100	208
4	150	221
5	200	242
6	300	270
7	400	305
8	500	306
9	600	336
10	700	321
11	1000	366
12	2000	413
13	3000	411
14	7000	400
15	10380	214

Assay Class: High Sensitivity DNA Assay  
 Data Path: C:\...ents and Settings\Bioanalyzer\2013-08-08\2013-08-08\_002.xad

Created: 8/8/2013 11:14:15 AM  
 Modified: 8/8/2013 11:56:27 AM

**Electropherogram Summary**



**Overall Results for Ladder**

Noise: 0.2

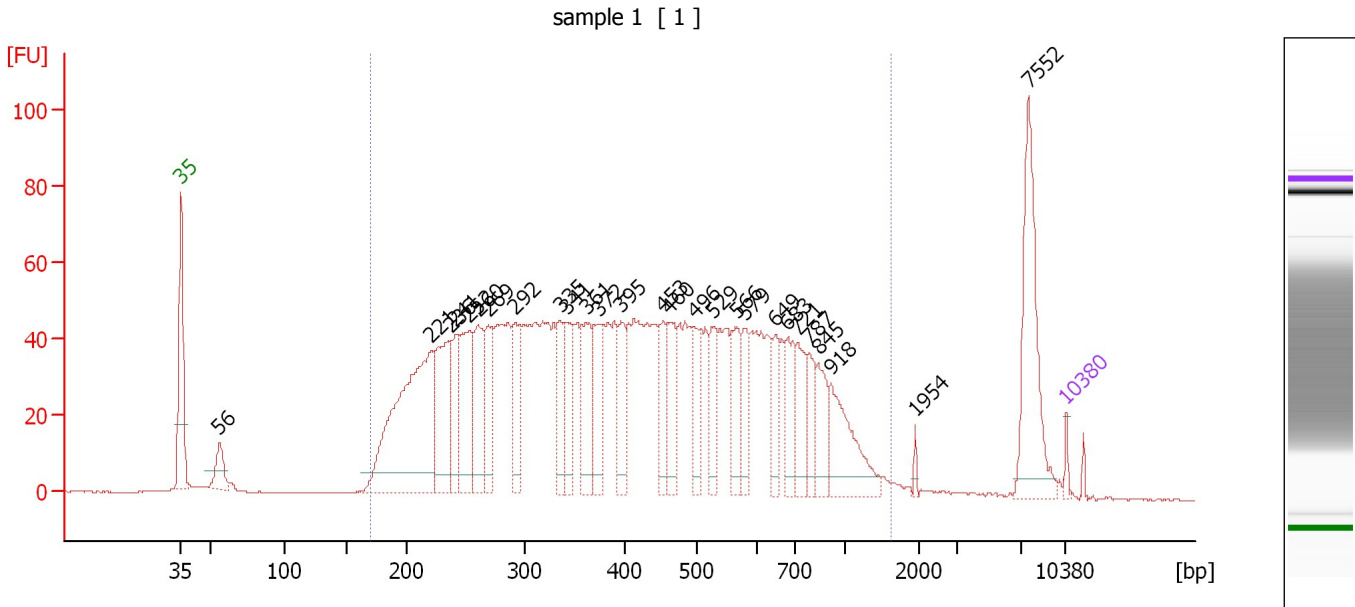
**Peak table for Ladder**

Peak	Size [bp]	Conc. [pg/μl]	Molarity [pmol/l]	Observations
1	35	125.00	5,411.3	Lower Marker
2	50	150.00	4,545.5	Ladder Peak
3	100	150.00	2,272.7	Ladder Peak
4	150	150.00	1,515.2	Ladder Peak
5	200	150.00	1,136.4	Ladder Peak
6	300	150.00	757.6	Ladder Peak
7	400	150.00	568.2	Ladder Peak
8	500	150.00	454.5	Ladder Peak
9	600	150.00	378.8	Ladder Peak
10	700	150.00	324.7	Ladder Peak
11	1,000	150.00	227.3	Ladder Peak
12	2,000	150.00	113.6	Ladder Peak
13	3,000	150.00	75.8	Ladder Peak
14	7,000	150.00	32.5	Ladder Peak
15	10,380	75.00	10.9	Upper Marker

Assay Class: High Sensitivity DNA Assay  
 Data Path: C:\...ents and Settings\Bioanalyzer\2013-08-08\2013-08-08\_002.xad

Created: 8/8/2013 11:14:15 AM  
 Modified: 8/8/2013 11:56:27 AM

**Electropherogram Summary Continued ...**



**Overall Results for sample 1 : sample 1**

Number of peaks found: 27                      Corr. Area 1: 2,123.5  
 Noise: 0.2

**Peak table for sample 1 : sample 1**

Peak	Size [bp]	Conc. [pg/μl]	Molarity [pmol/l]	Observations
1	35	125.00	5,411.3	Lower Marker
2	56	591.44	16,063.1	
3	221	5,021.08	34,488.4	
4	236	2,026.36	13,011.3	
5	241	951.25	5,982.2	
6	252	1,669.83	10,026.3	
7	260	1,395.82	8,140.9	
8	269	1,009.95	5,694.6	
9	292	972.00	5,051.5	
10	335	825.31	3,733.4	
11	341	931.91	4,143.5	
12	361	1,121.16	4,711.0	
13	372	1,036.48	4,218.8	
14	395	823.03	3,157.2	
15	453	731.95	2,446.9	
16	460	883.41	2,910.7	
17	496	688.93	2,103.5	
18	529	657.29	1,884.4	
19	566	749.43	2,005.3	
20	579	561.17	1,469.0	
21	649	523.34	1,221.2	
22	683	670.43	1,488.0	
23	721	669.75	1,407.6	
24	787	504.13	971.1	
25	845	638.93	1,145.2	
26	918	1,213.25	2,002.7	

Assay Class: High Sensitivity DNA Assay  
Data Path: C:\...ents and Settings\Bioanalyzer\2013-08-08\2013-08-08\_002.xad

Created: 8/8/2013 11:14:15 AM  
Modified: 8/8/2013 11:56:27 AM

**Electropherogram Summary Continued ...****... Peak table for sample 1 : sample 1**

Peak	Size [bp]	Conc. [pg/μl]	Molarity [pmol/l]	Observations
27	1,954	71.19	55.2	
28	7,552	1,744.67	350.0	
29	▶ 10,380	75.00	10.9	Upper Marker

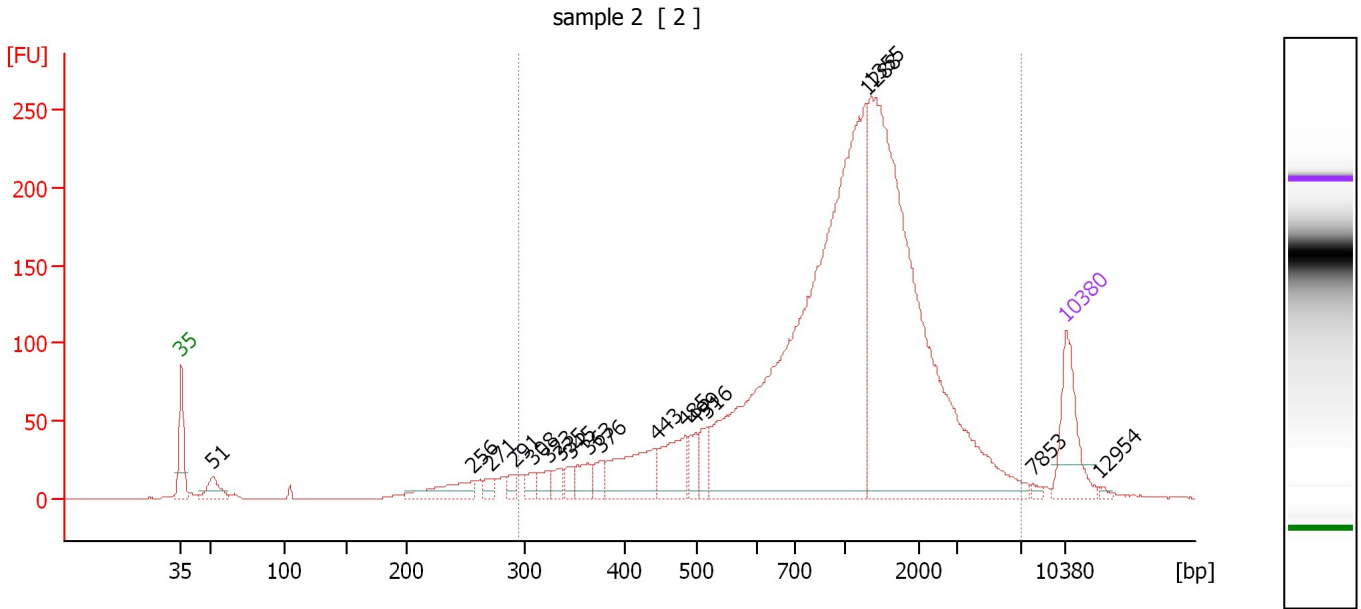
**Region table for sample 1 : sample 1**

From [bp]	To [bp]	Average Size [bp]	Molarity [pmol/l]	Conc. [pg/μl]	Corr. Area	% of Total	Size distribution in CV [%]	Color
170	1,613	450	195,059.7	43,759.52	2,123.5	92	48.5	■

Assay Class: High Sensitivity DNA Assay  
 Data Path: C:\...ents and Settings\Bioanalyzer\2013-08-08\2013-08-08\_002.xad

Created: 8/8/2013 11:14:15 AM  
 Modified: 8/8/2013 11:56:27 AM

**Electropherogram Summary Continued ...**



**Overall Results for sample 2 : sample 2**

Number of peaks found: 18                      Corr. Area 1: 3,476.5  
 Noise: 0.1

**Peak table for sample 2 : sample 2**

Peak	Size [bp]	Conc. [pg/μl]	Molarity [pmol/l]	Observations
1	35	125.00	5,411.3	Lower Marker
2	51	40.67	1,199.8	
3	256	59.28	350.6	
4	271	15.21	85.1	
5	291	15.96	83.0	
6	308	17.78	87.3	
7	323	21.10	98.9	
8	335	20.28	91.8	
9	345	17.98	78.9	
10	363	32.06	133.9	
11	376	22.78	91.9	
12	443	109.69	375.6	
13	485	78.47	245.4	
14	499	29.54	89.8	
15	516	35.29	103.7	
16	1,288	960.52	1,130.2	
17	1,355	776.38	868.2	
18	7,853	4.50	0.9	
19	10,380	75.00	10.9	Upper Marker
20	12,954	0.00	0.0	

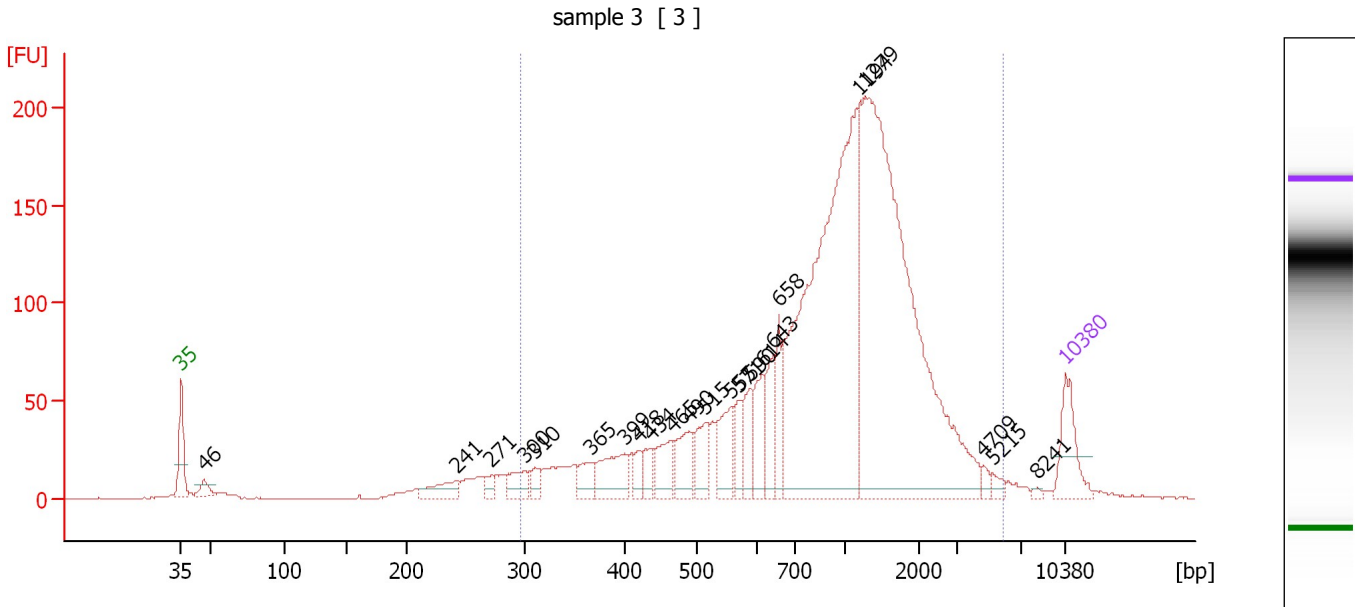
**Region table for sample 2 : sample 2**

From [bp]	To [bp]	Average Size [bp]	Molarity [pmol/l]	Conc. [pg/μl]	Corr. Area	% of Total	Size distribution in CV [%]	Color
294	7,076	1,299	4,266.8	2,258.78	3,476.5	93	73.0	Blue

Assay Class: High Sensitivity DNA Assay  
 Data Path: C:\...ents and Settings\Bioanalyzer\2013-08-08\2013-08-08\_002.xad

Created: 8/8/2013 11:14:15 AM  
 Modified: 8/8/2013 11:56:27 AM

**Electropherogram Summary Continued ...**



**Overall Results for sample 3 : sample 3**

Number of peaks found: 23                      Corr. Area 1: 2,724.6  
 Noise: 0.3

**Peak table for sample 3 : sample 3**

Peak	Size [bp]	Conc. [pg/μl]	Molarity [pmol/l]	Observations
1	35	125.00	5,411.3	Lower Marker
2	46	31.45	1,025.5	
3	241	57.87	363.3	
4	271	20.78	116.1	
5	300	53.77	271.5	
6	310	28.40	138.8	
7	365	47.43	197.0	
8	399	98.22	372.8	
9	418	29.83	108.0	
10	434	37.68	131.4	
11	465	71.97	234.3	
12	490	84.75	261.9	
13	515	72.99	214.8	
14	555	87.62	239.0	
15	571	48.47	128.6	
16	590	63.17	162.3	
17	614	83.54	206.2	
18	643	80.29	189.2	
19	658	77.51	178.4	
20	1,194	985.38	1,250.3	
21	1,279	1,126.32	1,333.8	
22	4,709	10.63	3.4	
23	5,215	12.32	3.6	
24	8,241	4.07	0.7	
25	10,380	75.00	10.9	Upper Marker



Assay Class: High Sensitivity DNA Assay  
Data Path: C:\...ents and Settings\Bioanalyzer\2013-08-08\2013-08-08\_002.xad

Created: 8/8/2013 11:14:15 AM  
Modified: 8/8/2013 11:56:27 AM

**Electropherogram Summary Continued ...**

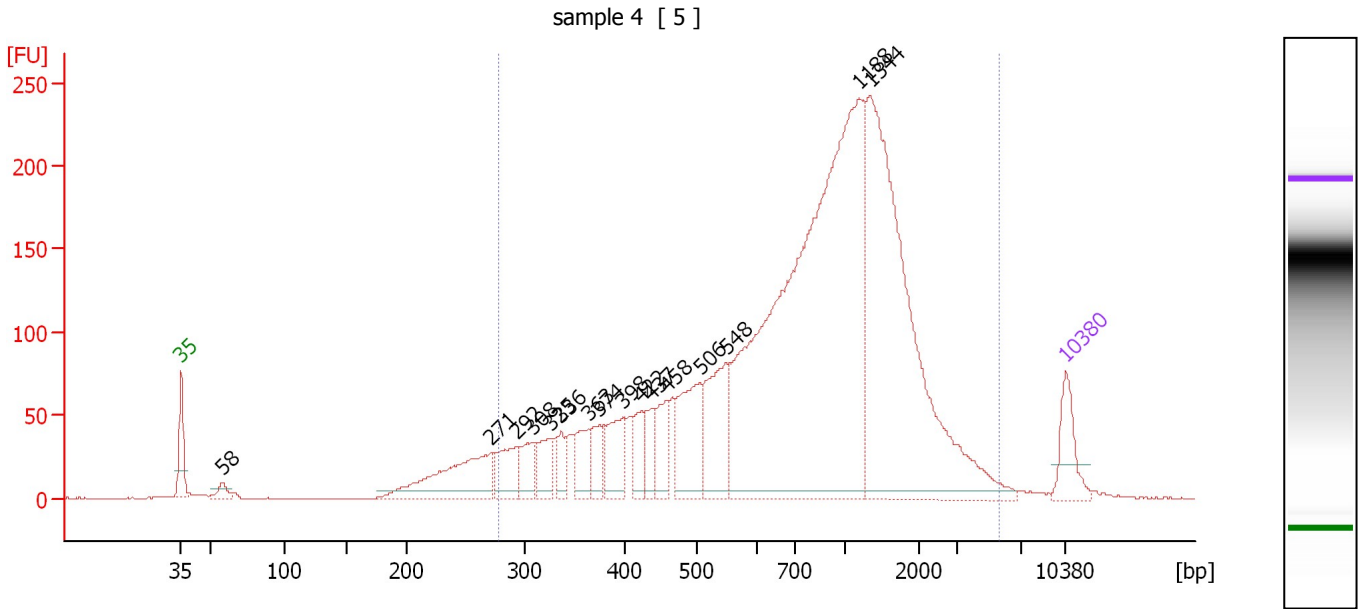
... Region table for sample 3 : sample 3

From [bp]	To [bp]	Average Size [bp]	Molarity [pmol/l]	Conc. [pg/μl]	Corr. Area	% of Total	Size distribution in CV [%]	Color
296	5,856	1,187	6,465.0	3,312.59	2,724.6	92	64.7	■

Assay Class: High Sensitivity DNA Assay  
 Data Path: C:\...ents and Settings\Bioanalyzer\2013-08-08\2013-08-08\_002.xad

Created: 8/8/2013 11:14:15 AM  
 Modified: 8/8/2013 11:56:27 AM

**Electropherogram Summary Continued ...**



**Overall Results for sample 4 : sample 4**

Number of peaks found: 16      Corr. Area 1: 3,964.1  
 Noise: 0.3

**Peak table for sample 4 : sample 4**

Peak	Size [bp]	Conc. [pg/μl]	Molarity [pmol/l]	Observations
1	35	125.00	5,411.3	Lower Marker
2	58	31.78	834.1	
3	271	286.47	1,603.2	
4	292	114.19	591.7	
5	308	80.69	397.5	
6	325	79.49	370.1	
7	336	49.10	221.3	
8	363	84.16	351.4	
9	374	62.01	251.4	
10	398	126.06	480.0	
11	422	72.28	259.4	
12	437	70.52	244.7	
13	458	86.48	285.9	
14	506	200.44	600.0	
15	548	206.70	571.1	
16	1,188	1,669.53	2,128.7	
17	1,344	998.53	1,125.6	
18	10,380	75.00	10.9	Upper Marker

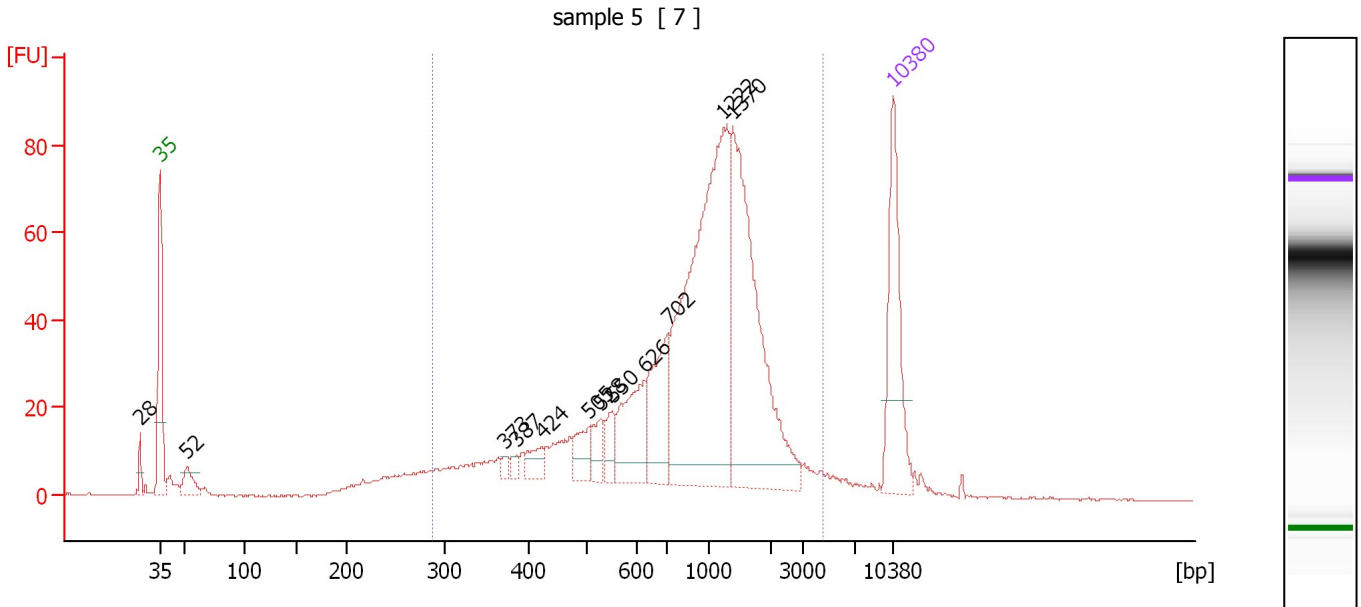
**Region table for sample 4 : sample 4**

From [bp]	To [bp]	Average Size [bp]	Molarity [pmol/l]	Conc. [pg/μl]	Corr. Area	% of Total	Size distribution in CV [%]	Color
278	5,625	1,029	9,838.5	4,253.69	3,964.1	93	67.8	Blue

Assay Class: High Sensitivity DNA Assay  
 Data Path: C:\...ents and Settings\Bioanalyzer\2013-08-08\2013-08-08\_002.xad

Created: 8/8/2013 11:14:15 AM  
 Modified: 8/8/2013 11:56:27 AM

**Electropherogram Summary Continued ...**



**Overall Results for sample 5 : sample 5**

Number of peaks found: 12                      Corr. Area 1: 1,069.0  
 Noise: 0.2

**Peak table for sample 5 : sample 5**

Peak	Size [bp]	Conc. [pg/μl]	Molarity [pmol/l]	Observations
1	28	0.00	0.0	
2	35	125.00	5,411.3	Lower Marker
3	52	25.13	729.9	
4	373	5.56	22.6	
5	387	5.76	22.6	
6	424	16.25	58.1	
7	505	23.01	69.0	
8	528	19.09	54.8	
9	550	17.53	48.3	
10	626	63.14	152.8	
11	702	72.18	155.8	
12	1,222	306.47	379.9	
13	1,370	213.81	236.4	
14	10,380	75.00	10.9	Upper Marker

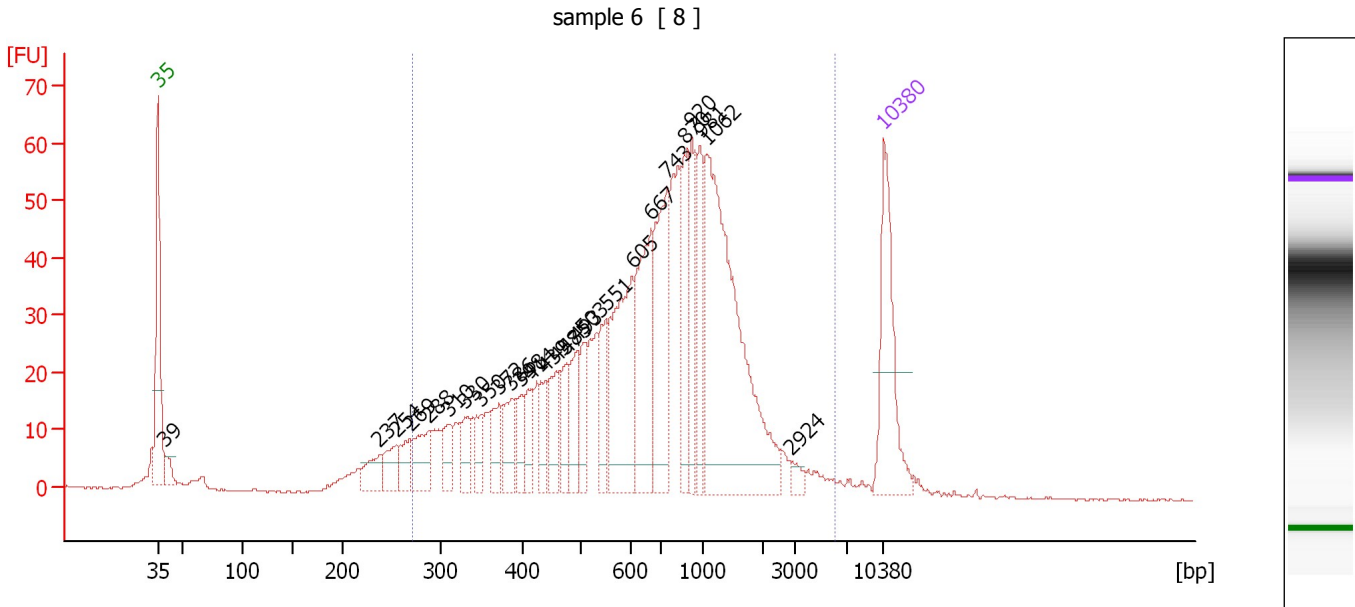
**Region table for sample 5 : sample 5**

From [bp]	To [bp]	Average Size [bp]	Molarity [pmol/l]	Conc. [pg/μl]	Corr. Area	% of Total	Size distribution in CV [%]	Color
287	4,594	1,071	2,051.4	984.26	1,069.0	89	57.1	Blue

Assay Class: High Sensitivity DNA Assay  
 Data Path: C:\...ents and Settings\Bioanalyzer\2013-08-08\2013-08-08\_002.xad

Created: 8/8/2013 11:14:15 AM  
 Modified: 8/8/2013 11:56:27 AM

**Electropherogram Summary Continued ...**



**Overall Results for sample 6 : sample 6**

Number of peaks found: 26                      Corr. Area 1: 1,148.8  
 Noise: 0.2

**Peak table for sample 6 : sample 6**

Peak	Size [bp]	Conc. [pg/μl]	Molarity [pmol/l]	Observations
1	35	125.00	5,411.3	Lower Marker
2	39	19.06	741.7	
3	237	26.95	172.2	
4	254	26.34	156.9	
5	269	26.25	148.1	
6	288	39.83	209.2	
7	310	24.36	119.0	
8	330	21.88	100.4	
9	350	23.07	99.9	
10	372	31.43	128.1	
11	386	31.21	122.5	
12	398	23.04	87.7	
13	414	27.32	100.0	
14	439	25.70	88.7	
15	458	37.65	124.6	
16	475	32.29	102.9	
17	493	38.65	118.8	
18	503	30.39	91.4	
19	551	36.81	101.3	
20	605	120.84	302.4	
21	667	104.89	238.2	
22	743	111.16	226.6	
23	870	55.14	96.1	
24	920	54.99	90.6	
25	981	48.68	75.2	
26	1,062	266.47	380.3	


Assay Class: High Sensitivity DNA Assay  
Data Path: C:\...ents and Settings\Bioanalyzer\2013-08-08\2013-08-08\_002.xad

Created: 8/8/2013 11:14:15 AM  
Modified: 8/8/2013 11:56:27 AM

**Electropherogram Summary Continued ...****... Peak table for sample 6 : sample 6**

Peak	Size [bp]	Conc. [pg/ $\mu$ l]	Molarity [pmol/l]	Observations
27	2,924	6.44	3.3	
28	10,380	75.00	10.9	Upper Marker

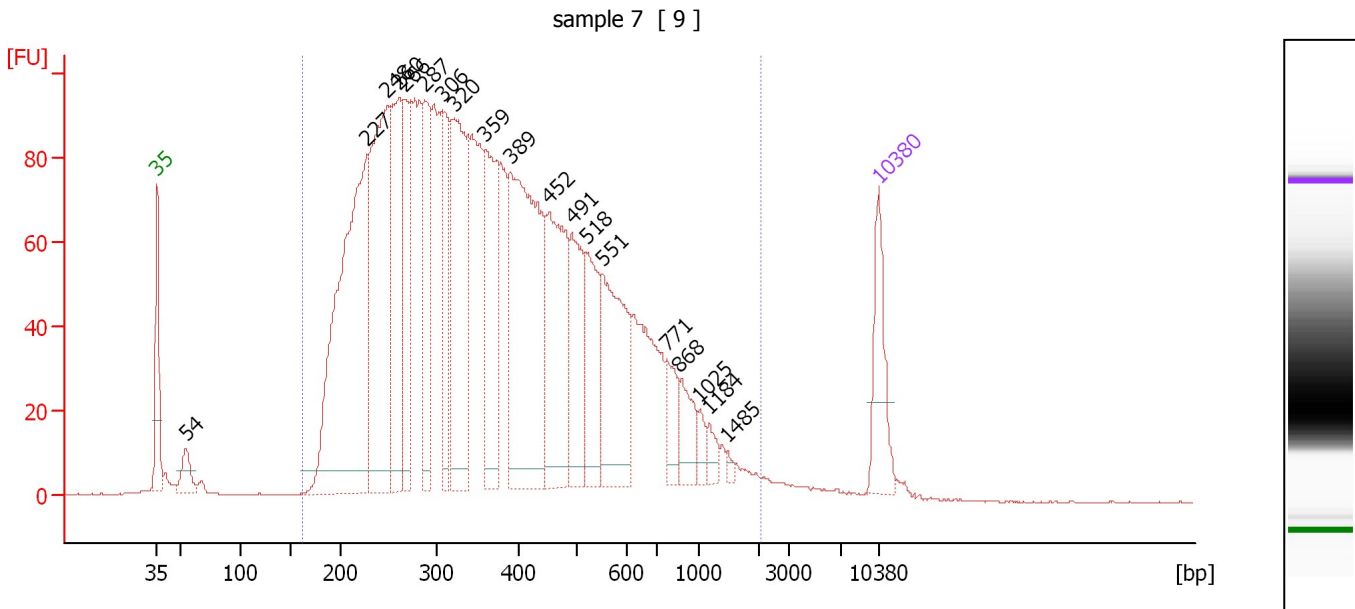
**Region table for sample 6 : sample 6**

From [bp]	To [bp]	Average Size [bp]	Molarity [pmol/l]	Conc. [pg/ $\mu$ l]	Corr. Area	% of Total	Size distribution in CV [%]	Color
272	6,011	875	3,742.9	1,456.11	1,148.8	92	72.6	

Assay Class: High Sensitivity DNA Assay  
 Data Path: C:\...ents and Settings\Bioanalyzer\2013-08-08\2013-08-08\_002.xad

Created: 8/8/2013 11:14:15 AM  
 Modified: 8/8/2013 11:56:27 AM

**Electropherogram Summary Continued ...**



**Overall Results for sample 7 : sample 7**

Number of peaks found: 19      Corr. Area 1: 3,377.2  
 Noise: 0.1

**Peak table for sample 7 : sample 7**

Peak	Size [bp]	Conc. [pg/μl]	Molarity [pmol/l]	Observations
1	35	125.00	5,411.3	Lower Marker
2	54	47.94	1,347.7	
3	227	709.47	4,734.2	
4	248	460.29	2,810.8	
5	260	237.75	1,386.8	
6	266	199.80	1,138.7	
7	287	187.96	992.6	
8	306	143.40	709.8	
9	320	306.76	1,450.5	
10	359	208.17	879.0	
11	389	458.71	1,784.7	
12	452	244.95	822.0	
13	491	144.88	446.9	
14	518	128.47	375.9	
15	551	204.87	563.0	
16	771	47.68	93.6	
17	868	50.40	88.0	
18	1,025	16.15	23.9	
19	1,184	17.24	22.1	
20	1,485	5.78	5.9	
21	10,380	75.00	10.9	Upper Marker

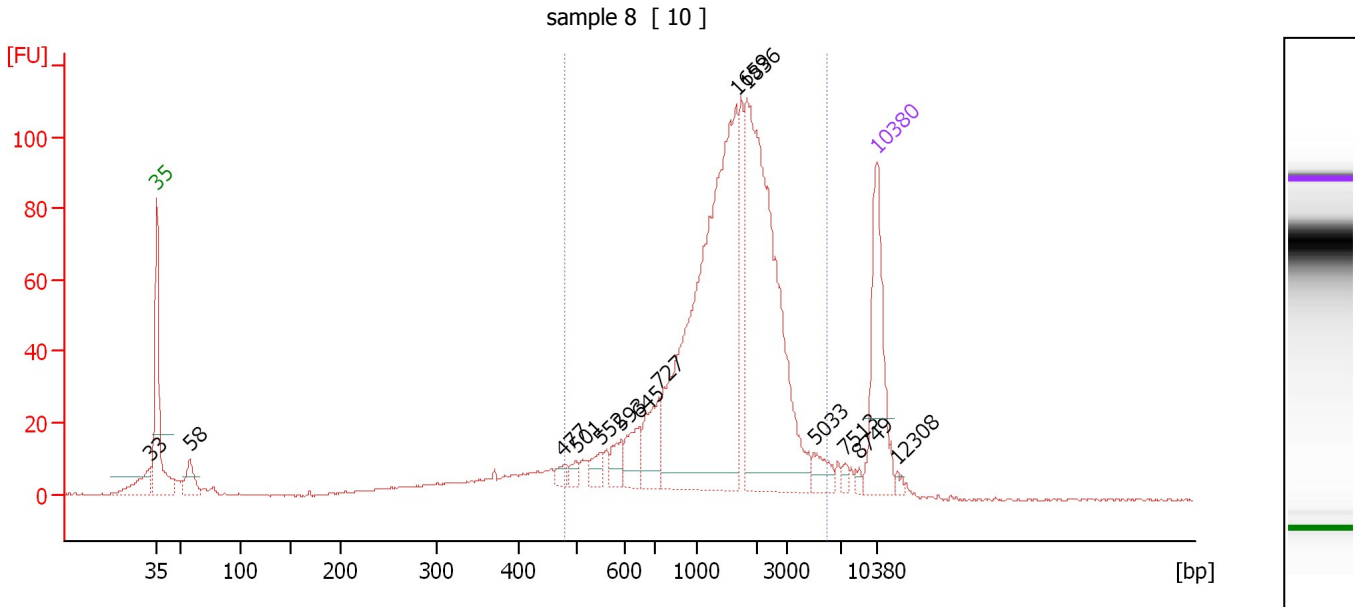
**Region table for sample 7 : sample 7**

From [bp]	To [bp]	Average Size [bp]	Molarity [pmol/l]	Conc. [pg/μl]	Corr. Area	% of Total	Size distribution in CV [%]	Color
161	2,084	414	23,864.1	5,041.55	3,377.2	97	56.2	Blue

Assay Class: High Sensitivity DNA Assay  
 Data Path: C:\...ents and Settings\Bioanalyzer\2013-08-08\2013-08-08\_002.xad

Created: 8/8/2013 11:14:15 AM  
 Modified: 8/8/2013 11:56:27 AM

**Electropherogram Summary Continued ...**



**Overall Results for sample 8 : sample 8**

Number of peaks found: 14                      Corr. Area 1: 1,149.2  
 Noise: 0.1

**Peak table for sample 8 : sample 8**

Peak	Size [bp]	Conc. [pg/μl]	Molarity [pmol/l]	Observations
1	33	0.00	0.0	
2	35	125.00	5,411.3	Lower Marker
3	58	29.40	774.1	
4	477	7.37	23.4	
5	501	7.18	21.7	
6	552	12.22	33.6	
7	593	16.62	42.5	
8	645	26.10	61.3	
9	727	39.72	82.8	
10	1,659	356.95	326.0	
11	1,836	275.31	227.2	
12	5,033	14.15	4.3	
13	7,513	3.70	0.7	
14	8,749	2.65	0.5	
15	10,380	75.00	10.9	Upper Marker
16	12,308	0.00	0.0	

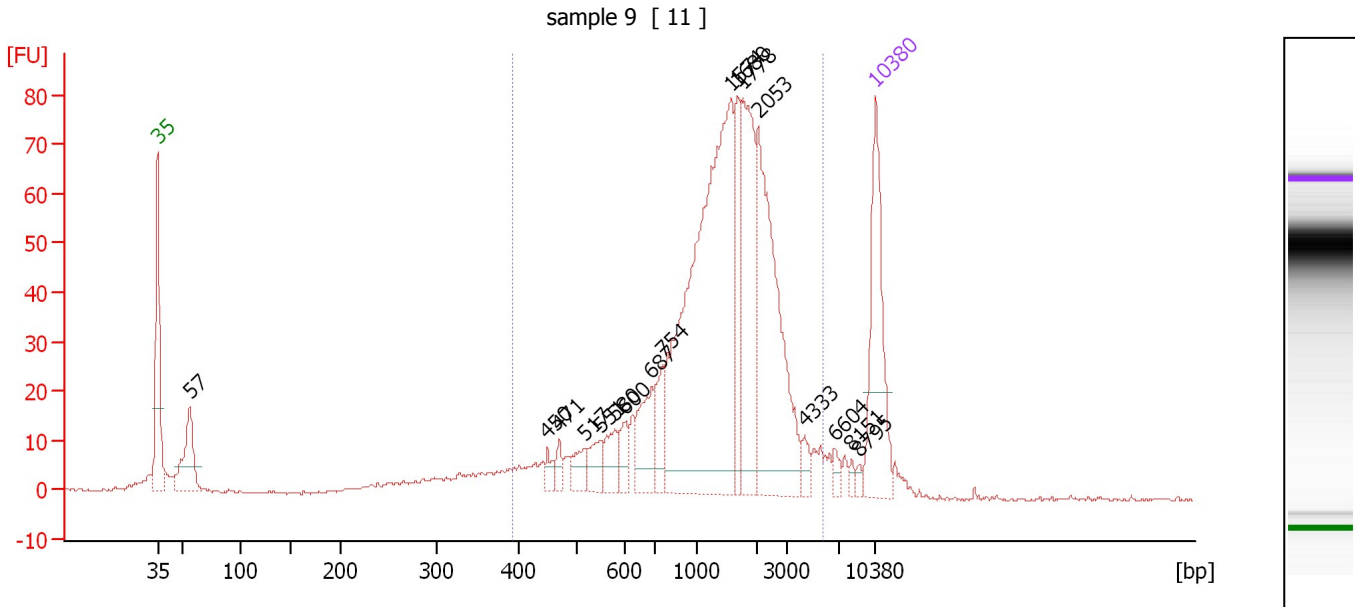
**Region table for sample 8 : sample 8**

From [bp]	To [bp]	Average Size [bp]	Molarity [pmol/l]	Conc. [pg/μl]	Corr. Area	% of Total	Size distribution in CV [%]	Color
479	6,070	1,663	1,105.7	882.56	1,149.2	85	54.1	Blue

Assay Class: High Sensitivity DNA Assay  
 Data Path: C:\...ents and Settings\Bioanalyzer\2013-08-08\2013-08-08\_002.xad

Created: 8/8/2013 11:14:15 AM  
 Modified: 8/8/2013 11:56:27 AM

**Electropherogram Summary Continued ...**



**Overall Results for sample 9 : sample 9**

Number of peaks found: 17      Corr. Area 1: 938.7  
 Noise: 0.2

**Peak table for sample 9 : sample 9**

Peak	Size [bp]	Conc. [pg/μl]	Molarity [pmol/l]	Observations
1	35	125.00	5,411.3	Lower Marker
2	57	67.91	1,814.7	
3	450	9.32	31.4	
4	471	7.96	25.6	
5	517	16.02	47.0	
6	551	18.67	51.3	
7	580	19.42	50.8	
8	600	16.21	40.9	
9	687	40.81	89.9	
10	754	25.44	51.1	
11	1,574	321.10	309.2	
12	1,680	47.02	42.4	
13	1,778	96.86	82.5	
14	2,053	148.50	109.6	
15	4,333	8.05	2.8	
16	6,604	6.12	1.4	
17	8,151	3.25	0.6	
18	8,795	3.09	0.5	
19	10,380	75.00	10.9	Upper Marker

**Region table for sample 9 : sample 9**

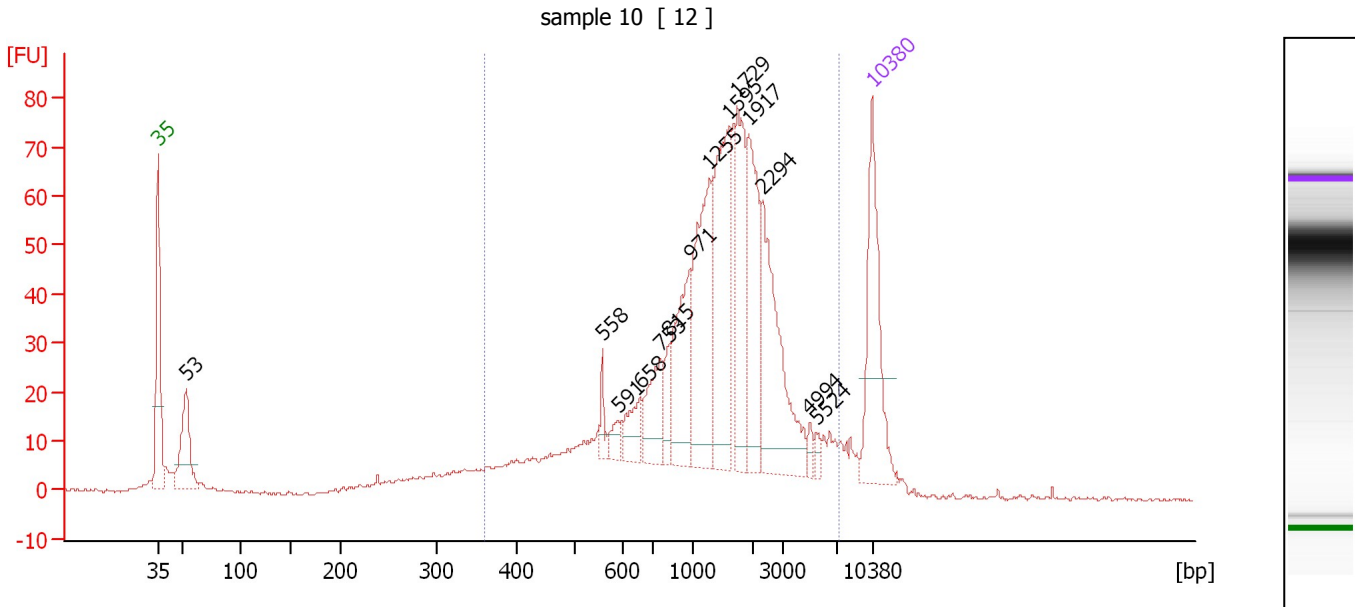
From [bp]	To [bp]	Average Size [bp]	Molarity [pmol/l]	Conc. [pg/μl]	Corr. Area	% of Total	Size distribution in CV [%]	Color
394	5,784	1,554	1,235.3	868.65	938.7	85	56.8	Blue



Assay Class: High Sensitivity DNA Assay  
 Data Path: C:\...ents and Settings\Bioanalyzer\2013-08-08\2013-08-08\_002.xad

Created: 8/8/2013 11:14:15 AM  
 Modified: 8/8/2013 11:56:27 AM

**Electropherogram Summary Continued ...**



**Overall Results for sample 10 : sample 10**

Number of peaks found: 14      Corr. Area 1: 981.6  
 Noise: 0.4

**Peak table for sample 10 : sample 10**

Peak	Size [bp]	Conc. [pg/μl]	Molarity [pmol/l]	Observations
1	35	125.00	5,411.3	Lower Marker
2	53	75.22	2,141.3	
3	558	11.36	30.9	
4	591	9.64	24.7	
5	658	22.94	52.8	
6	753	41.05	82.6	
7	815	17.84	33.2	
8	971	70.01	109.3	
9	1,255	104.83	126.6	
10	1,595	106.63	101.3	
11	1,729	79.59	69.7	
12	1,917	71.73	56.7	
13	2,294	102.46	67.7	
14	4,994	5.27	1.6	
15	5,524	5.33	1.5	
16	10,380	75.00	10.9	Upper Marker

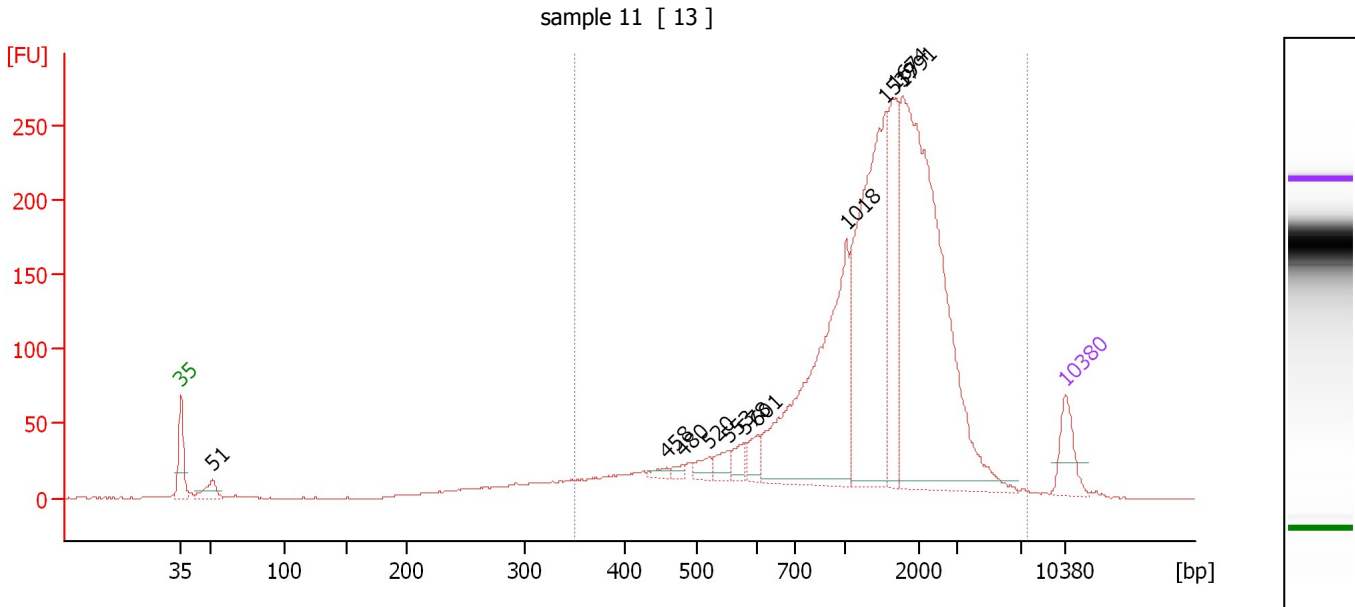
**Region table for sample 10 : sample 10**

From [bp]	To [bp]	Average Size [bp]	Molarity [pmol/l]	Conc. [pg/μl]	Corr. Area	% of Total	Size distribution in CV [%]	Color
360	7,204	1,645	1,436.5	951.92	981.6	86	72.1	Blue

Assay Class: High Sensitivity DNA Assay  
 Data Path: C:\...ents and Settings\Bioanalyzer\2013-08-08\2013-08-08\_002.xad

Created: 8/8/2013 11:14:15 AM  
 Modified: 8/8/2013 11:56:27 AM

**Electropherogram Summary Continued ...**



**Overall Results for sample 11 : sample 11**

Number of peaks found: 11                      Corr. Area 1: 3,042.4  
 Noise: 0.3

**Peak table for sample 11 : sample 11**

Peak	Size [bp]	Conc. [pg/µl]	Molarity [pmol/l]	Observations
1	35	125.00	5,411.3	Lower Marker
2	51	57.00	1,691.9	
3	458	16.45	54.4	
4	480	15.12	47.7	
5	520	31.67	92.2	
6	553	38.85	106.4	
7	578	39.86	104.4	
8	601	42.41	107.0	
9	1,018	677.40	1,008.1	
10	1,539	686.55	675.8	
11	1,674	281.07	254.4	
12	1,791	1,069.19	904.6	
13	10,380	75.00	10.9	Upper Marker

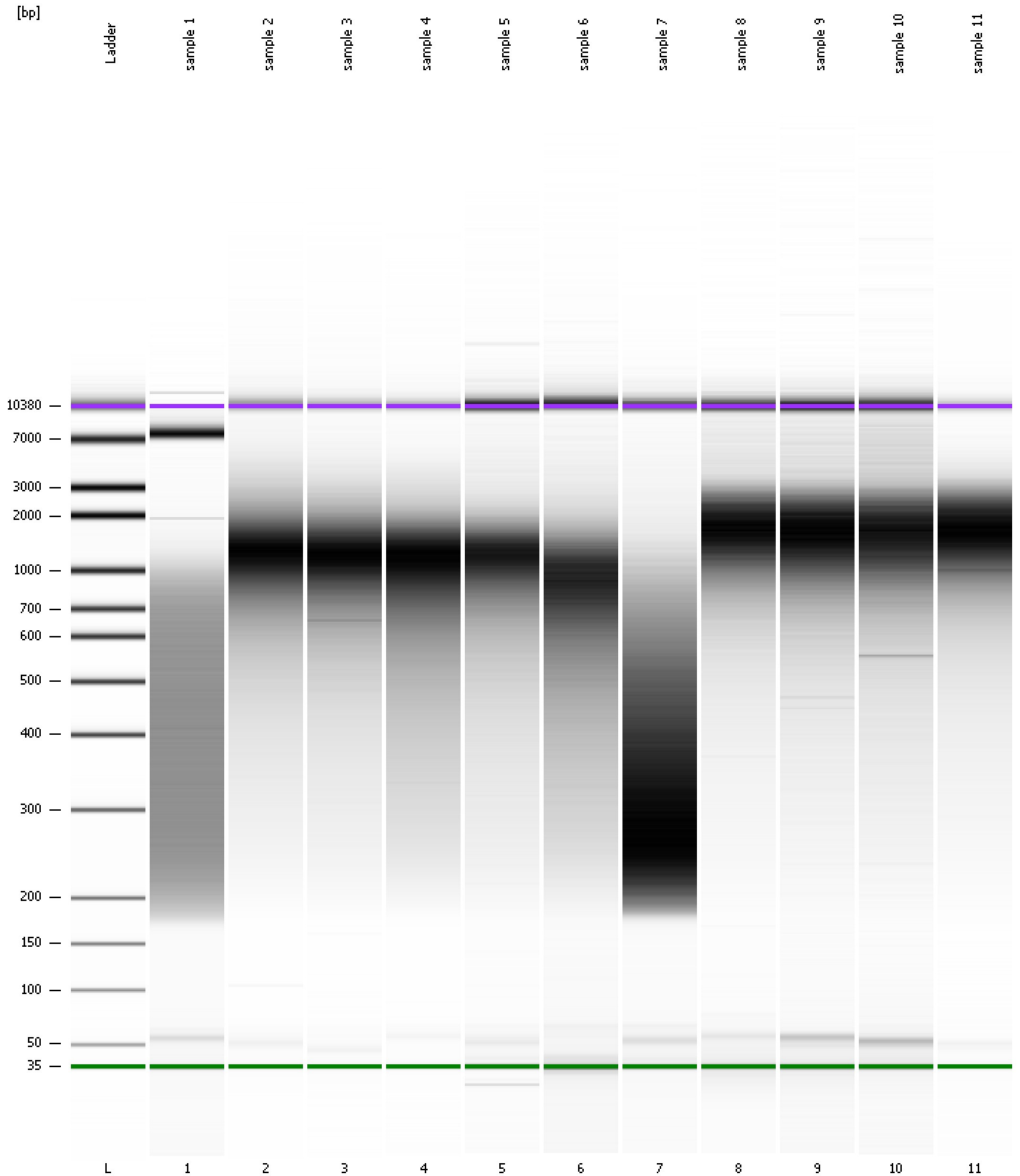
**Region table for sample 11 : sample 11**

From [bp]	To [bp]	Average Size [bp]	Molarity [pmol/l]	Conc. [pg/µl]	Corr. Area	% of Total	Size distribution in CV [%]	Color
350	7,419	1,577	5,112.8	3,525.56	3,042.4	93	58.2	Blue

Assay Class: High Sensitivity DNA Assay  
Data Path: C:\...ents and Settings\Bioanalyzer\2013-08-08\2013-08-08\_002.xad

Created: 8/8/2013 11:14:15 AM  
Modified: 8/8/2013 11:56:27 AM

**Gel Image**



Assay Class: High Sensitivity DNA Assay  
 Data Path: C:\...ents and Settings\Bioanalyzer\2013-08-08\2013-08-08\_002.xad

Created: 8/8/2013 11:14:15 AM  
 Modified: 8/8/2013 11:56:27 AM

**Run Logbook**

Description	Number	Source	Category	Sub Category	Time	Time Zone	User	Host
Run ended on port 1 (Number of wells acquired: 12)		Instrument	Run		8/8/2013 11:55:33 AM	(GMT --07:00) Pacific Standard Time	UC Davis	D8XSMGH1
Run started on port 1 (File: C:\Documents and Settings\Bioanalyzer\2013-08-08\2013-08-08_002.xad)		Instrument	Run		8/8/2013 11:14:21 AM	(GMT --07:00) Pacific Standard Time	UC Davis	D8XSMGH1
Product Number : G2938B		Instrument	Run		8/8/2013 11:14:21 AM	(GMT --07:00) Pacific Standard Time	UC Davis	D8XSMGH1
Name :		Instrument	Run		8/8/2013 11:14:21 AM	(GMT --07:00) Pacific Standard Time	UC Davis	D8XSMGH1
Vendor : Agilent Technologies		Instrument	Run		8/8/2013 11:14:21 AM	(GMT --07:00) Pacific Standard Time	UC Davis	D8XSMGH1
Serial# : DE13701086		Instrument	Run		8/8/2013 11:14:21 AM	(GMT --07:00) Pacific Standard Time	UC Davis	D8XSMGH1
Firmware : C.01.069		Instrument	Run		8/8/2013 11:14:21 AM	(GMT --07:00) Pacific Standard Time	UC Davis	D8XSMGH1
Cartridge : Electrode		Instrument	Run		8/8/2013 11:14:21 AM	(GMT --07:00) Pacific Standard Time	UC Davis	D8XSMGH1