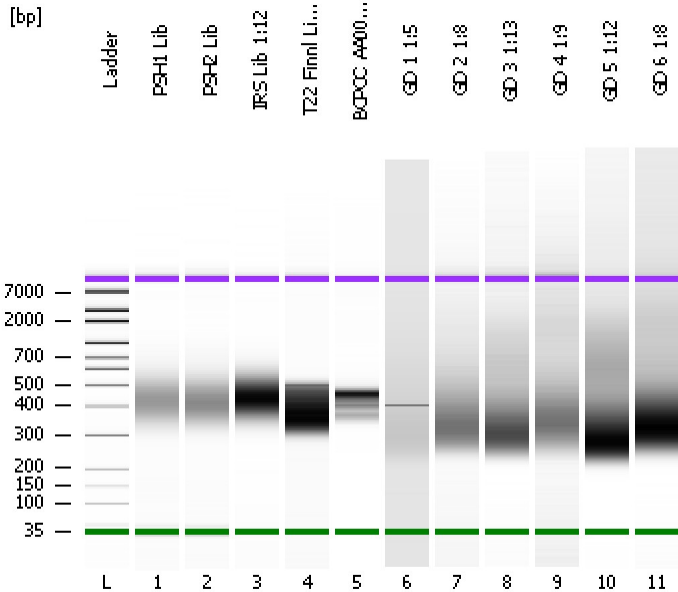


Assay Class: High Sensitivity DNA Assay
Data Path: C:\...ents and Settings\Bioanalyzer\2013-08-09\2013-08-09_009.xad

Created: 8/9/2013 4:29:36 PM
Modified: 8/13/2013 9:23:36 AM

Electrophoresis File Run Summary



Instrument Information:

Instrument Name: DE13701086 Firmware: C.01.069
Serial#: DE13701086 Type: G2938B

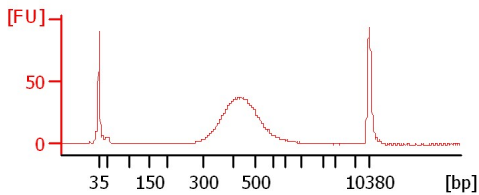
Assay Information:

Assay Origin Path: C:\Program Files\Agilent\2100 bioanalyzer\2100 expert\assays\dsDNA\High Sensitivity DNA.xsy
Assay Class: High Sensitivity DNA Assay
Version: 1.03
Assay Comments: Copyright © 2003-2010 Agilent Technologies

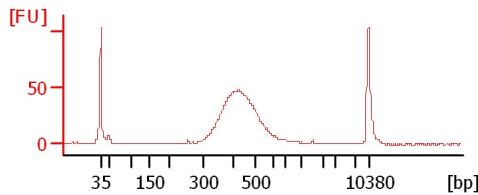
Chip Information:

Chip Lot #:
Reagent Kit Lot #:
Chip Comments:

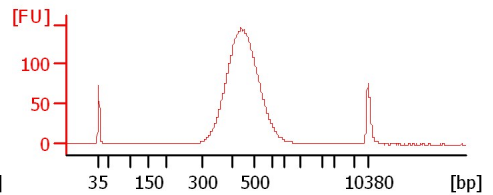
PSH1 Lib



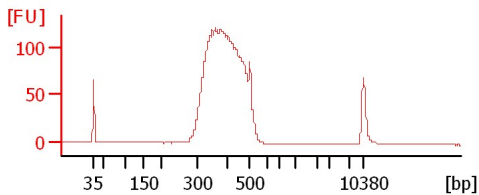
PSH2 Lib



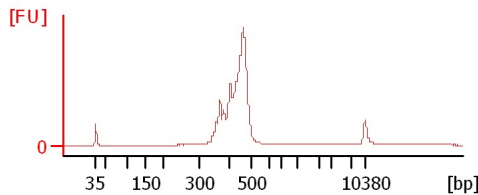
IRS Lib 1:12



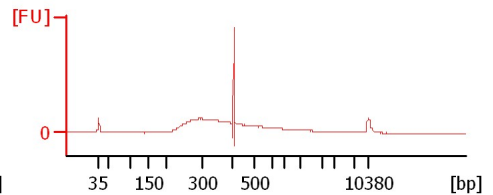
T22 Finnl Lib 8/7/13



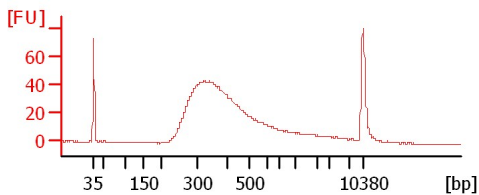
BCPCC_AA001 1:2



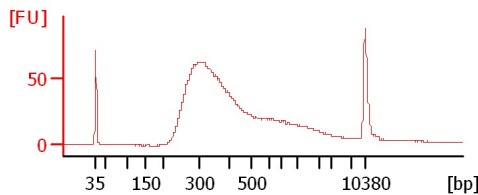
GD 1 1:5



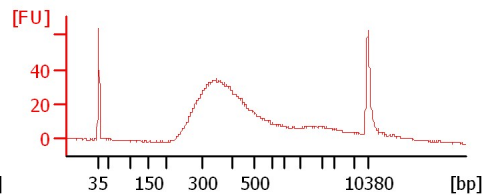
GD 2 1:8



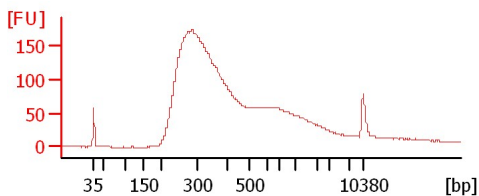
GD 3 1:13



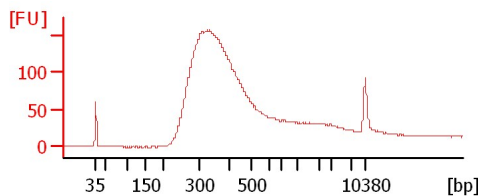
GD 4 1:9



GD 5 1:12



GD 6 1:8



Assay Class: High Sensitivity DNA Assay
 Data Path: C:\...ents and Settings\Bioanalyzer\2013-08-09\2013-08-09_009.xad

Created: 8/9/2013 4:29:36 PM
 Modified: 8/13/2013 9:23:36 AM

Electrophoresis File Run Summary (Chip Summary)

Sample Name	Sample Comment	Rest. Digest	Status	Observation	Result Label	Result Color
PSH1 Lib		<input type="checkbox"/>	✓			
PSH2 Lib		<input type="checkbox"/>	✓			
IRS Lib 1:12		<input type="checkbox"/>	✓			
T22 FinnI Lib 8/7/13		<input type="checkbox"/>	✓			
BCPCC_AA001 1:2		<input type="checkbox"/>	✓			
GD 1 1:5		<input type="checkbox"/>	✓			
GD 2 1:8		<input type="checkbox"/>	✓			
GD 3 1:13		<input type="checkbox"/>	✓			
GD 4 1:9		<input type="checkbox"/>	✓			
GD 5 1:12		<input type="checkbox"/>	✓			
GD 6 1:8		<input type="checkbox"/>	✓			
Ladder		<input type="checkbox"/>	✓			

Chip Lot #

Reagent Kit Lot #

Chip Comments :

Assay Class: High Sensitivity DNA Assay
Data Path: C:\...ents and Settings\Bioanalyzer\2013-08-09\2013-08-09_009.xad

Created: 8/9/2013 4:29:36 PM
Modified: 8/13/2013 9:23:36 AM

Electrophoresis Assay Details

General Analysis Settings

Number of Available Sample and Ladder Wells (Max.) : 12
Minimum Visible Range [s] : 32
Maximum Visible Range [s] : 138
Start Analysis Time Range [s] : 33
End Analysis Time Range [s] : 137.5
Ladder Concentration [pg/μl] : 1950
Uses Standard Area for Ladder Fragments
Lower Marker Concentration [pg/μl] : 125
Upper Marker Concentration [pg/μl] : 75
Used Upper Marker for Quantitation
Standard Curve Fit is Point to Point
Show Data Aligned to Lower and Upper Marker

Integrator Settings

Integration Start Time [s] : 33.05
Integration End Time [s] : 137
Slope Threshold : 0.8
Height Threshold [FU] : 5
Area Threshold : 0.1
Width Threshold [s] : 0.6
Baseline Plateau [s] : 0.5

Filter Settings

Filter Width [s] : 0.5
Polynomial Order : 4

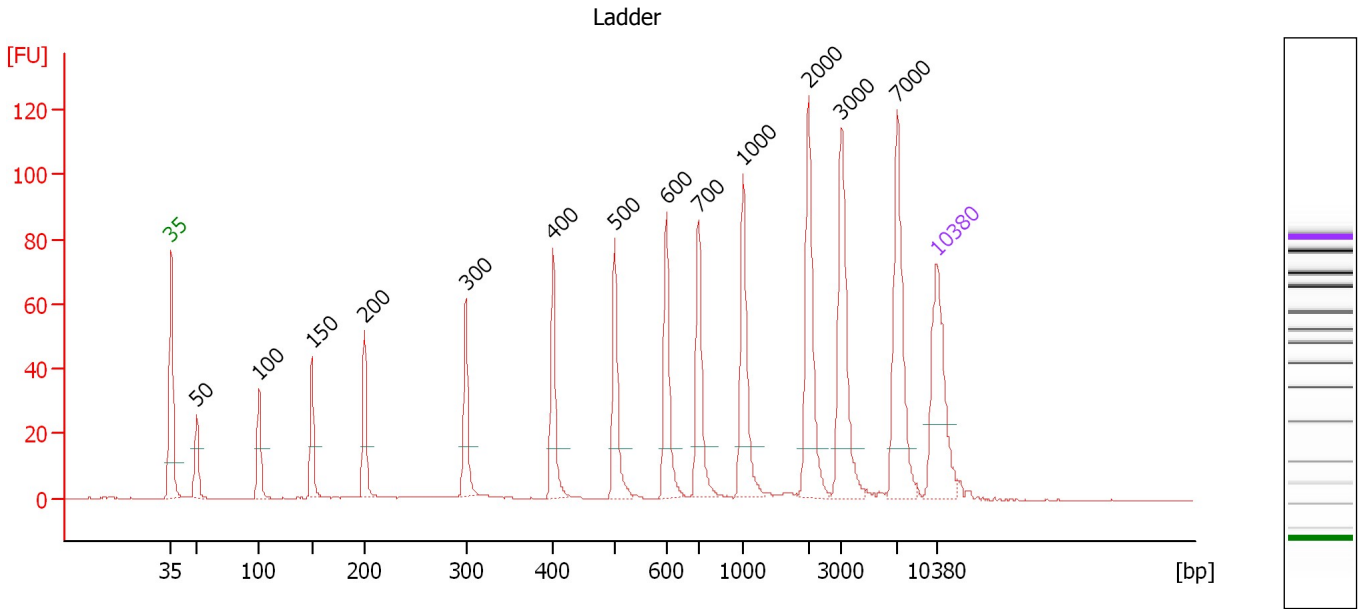
Ladder

Ladder Peak	Size	Area
1	35	160
2	50	210
3	100	208
4	150	221
5	200	242
6	300	270
7	400	305
8	500	306
9	600	336
10	700	321
11	1000	366
12	2000	413
13	3000	411
14	7000	400
15	10380	214

Assay Class: High Sensitivity DNA Assay
 Data Path: C:\...ents and Settings\Bioanalyzer\2013-08-09\2013-08-09_009.xad

Created: 8/9/2013 4:29:36 PM
 Modified: 8/13/2013 9:23:36 AM

Electropherogram Summary



Overall Results for Ladder

Noise: 0.1

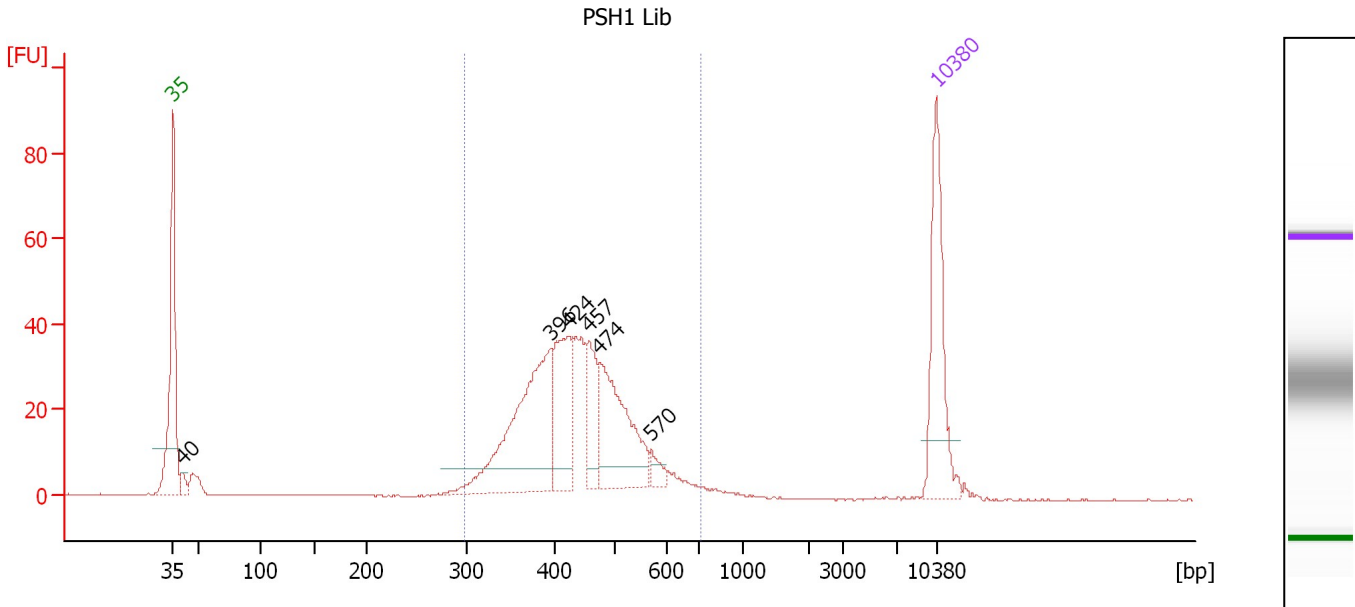
Peak table for Ladder

Peak	Size [bp]	Conc. [pg/μl]	Molarity [pmol/l]	Observations
1	35	125.00	5,411.3	Lower Marker
2	50	150.00	4,545.5	Ladder Peak
3	100	150.00	2,272.7	Ladder Peak
4	150	150.00	1,515.2	Ladder Peak
5	200	150.00	1,136.4	Ladder Peak
6	300	150.00	757.6	Ladder Peak
7	400	150.00	568.2	Ladder Peak
8	500	150.00	454.5	Ladder Peak
9	600	150.00	378.8	Ladder Peak
10	700	150.00	324.7	Ladder Peak
11	1,000	150.00	227.3	Ladder Peak
12	2,000	150.00	113.6	Ladder Peak
13	3,000	150.00	75.8	Ladder Peak
14	7,000	150.00	32.5	Ladder Peak
15	10,380	75.00	10.9	Upper Marker

Assay Class: High Sensitivity DNA Assay
 Data Path: C:\...ents and Settings\Bioanalyzer\2013-08-09\2013-08-09_009.xad

Created: 8/9/2013 4:29:36 PM
 Modified: 8/13/2013 9:23:36 AM

Electropherogram Summary Continued ...



Overall Results for sample 1 : PSH1 Lib

Number of peaks found: 6 Corr. Area 1: 530.5
 Noise: 0.1

Peak table for sample 1 : PSH1 Lib

Peak	Size [bp]	Conc. [pg/μl]	Molarity [pmol/l]	Observations
1	35	125.00	5,411.3	Lower Marker
2	40	11.59	438.8	
3	396	177.12	678.2	
4	424	82.89	296.1	
5	457	48.30	160.1	
6	474	108.87	347.8	
7	570	10.54	28.0	
8	10,380	75.00	10.9	Upper Marker

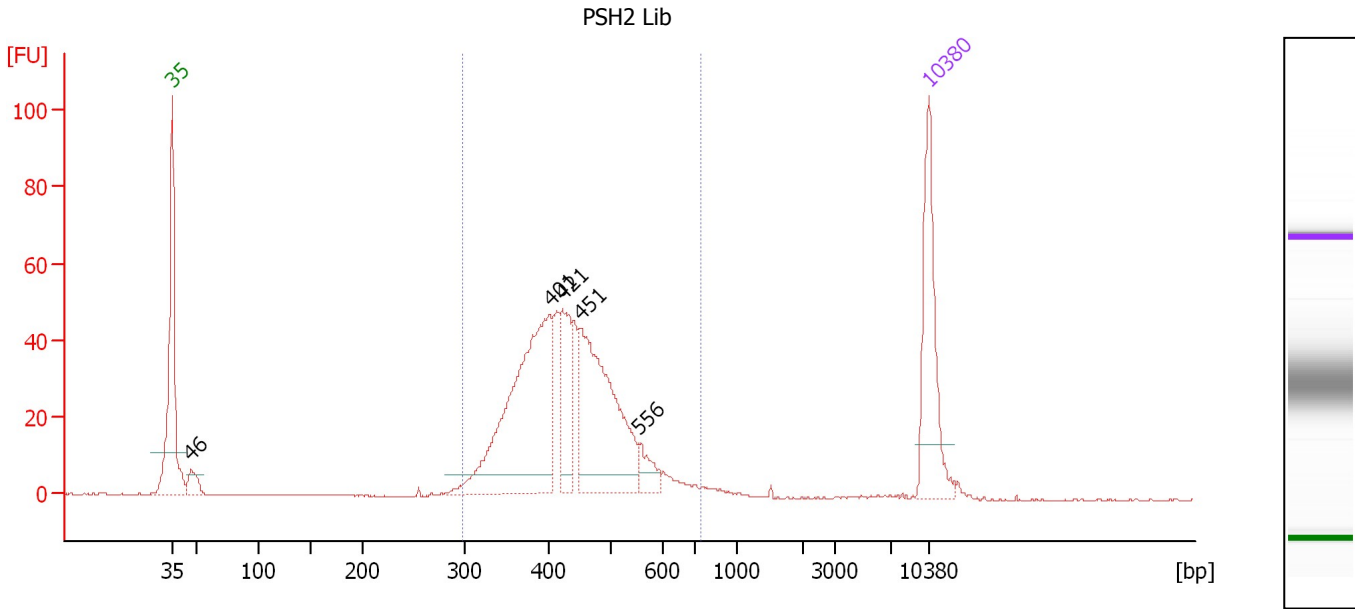
Region table for sample 1 : PSH1 Lib

From [bp]	To [bp]	Average Size [bp]	Molarity [pmol/l]	Conc. [pg/μl]	Corr. Area	% of Total	Size distribution in CV [%]	Color
298	708	440	1,925.3	540.58	530.5	93	16.7	Blue

Assay Class: High Sensitivity DNA Assay
 Data Path: C:\...ents and Settings\Bioanalyzer\2013-08-09\2013-08-09_009.xad

Created: 8/9/2013 4:29:36 PM
 Modified: 8/13/2013 9:23:36 AM

Electropherogram Summary Continued ...



Overall Results for sample 2 : PSH2 Lib

Number of peaks found: 5 Corr. Area 1: 665.7
 Noise: 0.1

Peak table for sample 2 : PSH2 Lib

Peak	Size [bp]	Conc. [pg/μl]	Molarity [pmol/l]	Observations
1	35	125.00	5,411.3	Lower Marker
2	46	19.64	641.7	
3	401	244.93	925.8	
4	421	62.09	223.5	
5	451	181.73	610.0	
6	556	18.59	50.7	
7	10,380	75.00	10.9	Upper Marker

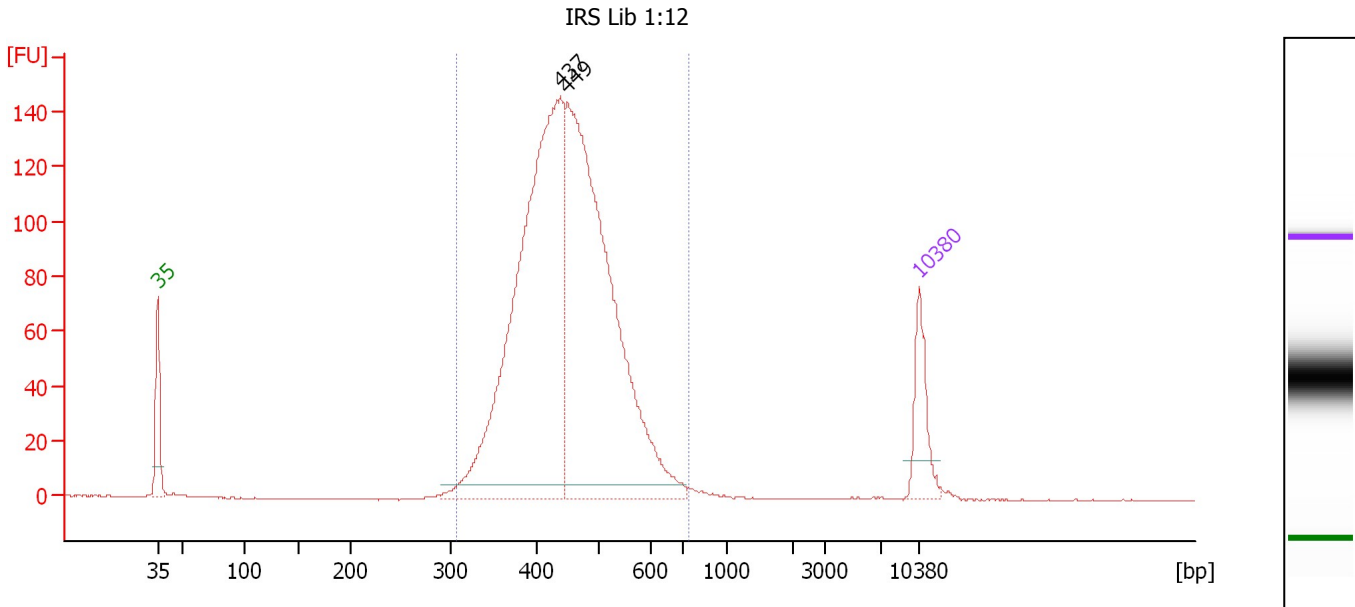
Region table for sample 2 : PSH2 Lib

From [bp]	To [bp]	Average Size [bp]	Molarity [pmol/l]	Conc. [pg/μl]	Corr. Area	% of Total	Size distribution in CV [%]	Color
299	748	435	2,216.4	615.93	665.7	94	16.8	Blue

Assay Class: High Sensitivity DNA Assay
 Data Path: C:\...ents and Settings\Bioanalyzer\2013-08-09\2013-08-09_009.xad

Created: 8/9/2013 4:29:36 PM
 Modified: 8/13/2013 9:23:36 AM

Electropherogram Summary Continued ...



Overall Results for sample 3 : IRS Lib 1:12

Number of peaks found: 2 Corr. Area 1: 1,785.4
 Noise: 0.1

Peak table for sample 3 : IRS Lib 1:12

Peak	Size [bp]	Conc. [pg/μl]	Molarity [pmol/l]	Observations
1	35	125.00	5,411.3	Lower Marker
2	437	1,139.05	3,946.9	
3	449	1,100.31	3,714.6	
4	10,380	75.00	10.9	Upper Marker

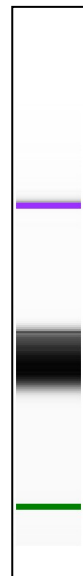
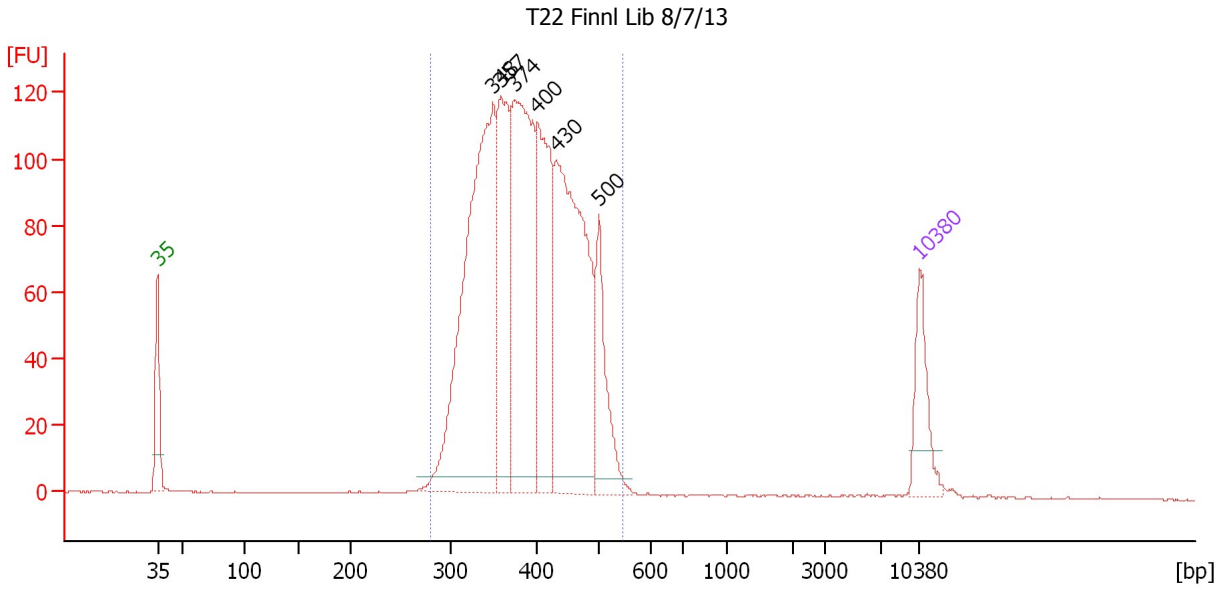
Region table for sample 3 : IRS Lib 1:12

From [bp]	To [bp]	Average Size [bp]	Molarity [pmol/l]	Conc. [pg/μl]	Corr. Area	% of Total	Size distribution in CV [%]	Color
307	738	450	7,704.8	2,228.73	1,785.4	99	15.0	Blue

Assay Class: High Sensitivity DNA Assay
 Data Path: C:\...ents and Settings\Bioanalyzer\2013-08-09\2013-08-09_009.xad

Created: 8/9/2013 4:29:36 PM
 Modified: 8/13/2013 9:23:36 AM

Electropherogram Summary Continued ...



Overall Results for sample 4 : T22 Finnl Lib 8/7/13

Number of peaks found: 6 Corr. Area 1: 1,831.6
 Noise: 0.1

Peak table for sample 4 : T22 Finnl Lib 8/7/13

Peak	Size [bp]	Conc. [pg/μl]	Molarity [pmol/l]	Observations
1	35	125.00	5,411.3	Lower Marker
2	348	740.72	3,222.4	
3	357	278.99	1,183.0	
4	374	504.91	2,044.8	
5	400	296.76	1,124.2	
6	430	566.77	1,997.6	
7	500	150.27	455.6	
8	10,380	75.00	10.9	Upper Marker

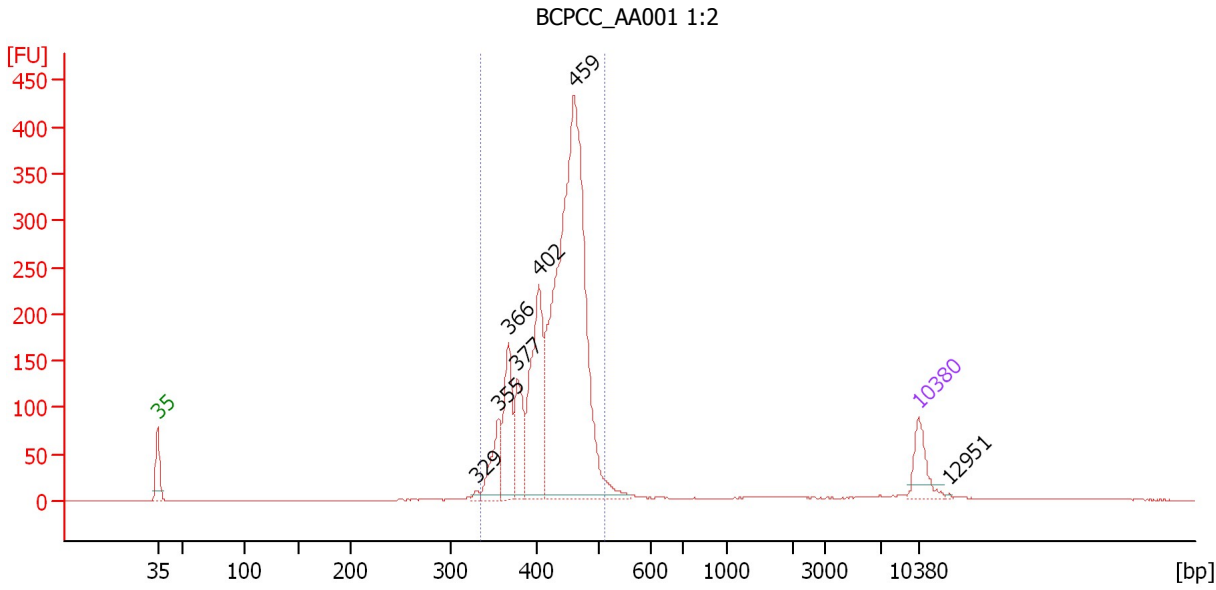
Region table for sample 4 : T22 Finnl Lib 8/7/13

From [bp]	To [bp]	Average Size [bp]	Molarity [pmol/l]	Conc. [pg/μl]	Corr. Area	% of Total	Size distribution in CV [%]	Color
280	545	395	10,139.6	2,576.30	1,831.6	97	14.7	Blue

Assay Class: High Sensitivity DNA Assay
 Data Path: C:\...ents and Settings\Bioanalyzer\2013-08-09\2013-08-09_009.xad

Created: 8/9/2013 4:29:36 PM
 Modified: 8/13/2013 9:23:36 AM

Electropherogram Summary Continued ...



Overall Results for sample 5 : BCPCC AA001 1:2

Number of peaks found: 7 Corr. Area 1: 2,449.1
 Noise: 0.1

Peak table for sample 5 : BCPCC AA001 1:2

Peak	Size [bp]	Conc. [pg/μl]	Molarity [pmol/l]	Observations
1	35	125.00	5,411.3	Lower Marker
2	329	10.63	49.0	
3	355	140.76	600.6	
4	366	216.48	895.7	
5	377	172.09	692.2	
6	402	418.36	1,576.0	
7	459	1,730.74	5,709.6	
8	10,380	75.00	10.9	Upper Marker
9	12,951	0.00	0.0	

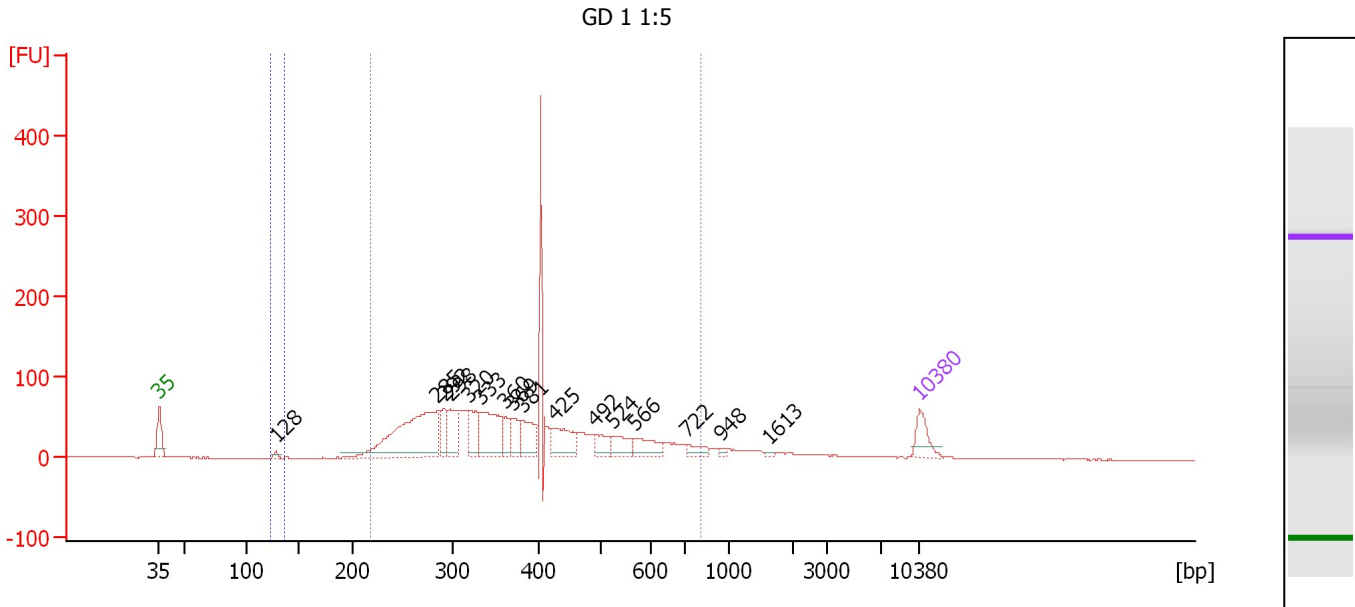
Region table for sample 5 : BCPCC AA001 1:2

From [bp]	To [bp]	Average Size [bp]	Molarity [pmol/l]	Conc. [pg/μl]	Corr. Area	% of Total	Size distribution in CV [%]	Color
335	512	429	9,563.2	2,679.30	2,449.1	93	9.3	Blue

Assay Class: High Sensitivity DNA Assay
 Data Path: C:\...ents and Settings\Bioanalyzer\2013-08-09\2013-08-09_009.xad

Created: 8/9/2013 4:29:36 PM
 Modified: 8/13/2013 9:23:36 AM

Electropherogram Summary Continued ...



Overall Results for sample 6 : GD 1 1:5

Number of peaks found: 16 Corr. Area 1: 1,646.5
 Noise: 0.3 Corr. Area 2: 6.5

Peak table for sample 6 : GD 1 1:5

Peak	Size [bp]	Conc. [pg/μl]	Molarity [pmol/l]	Observations
1	35	125.00	5,411.3	Lower Marker
2	128	15.40	182.9	
3	285	704.47	3,745.4	
4	292	107.95	560.5	
5	298	147.95	753.5	
6	320	135.07	640.2	
7	333	280.21	1,275.3	
8	360	76.93	323.7	
9	369	83.56	342.7	
10	381	144.52	575.2	
11	425	159.82	569.7	
12	492	73.95	227.6	
13	524	92.39	267.1	
14	566	102.08	273.0	
15	722	44.28	93.0	
16	948	9.82	15.7	
17	1,613	6.63	6.2	
18	10,380	75.00	10.9	Upper Marker

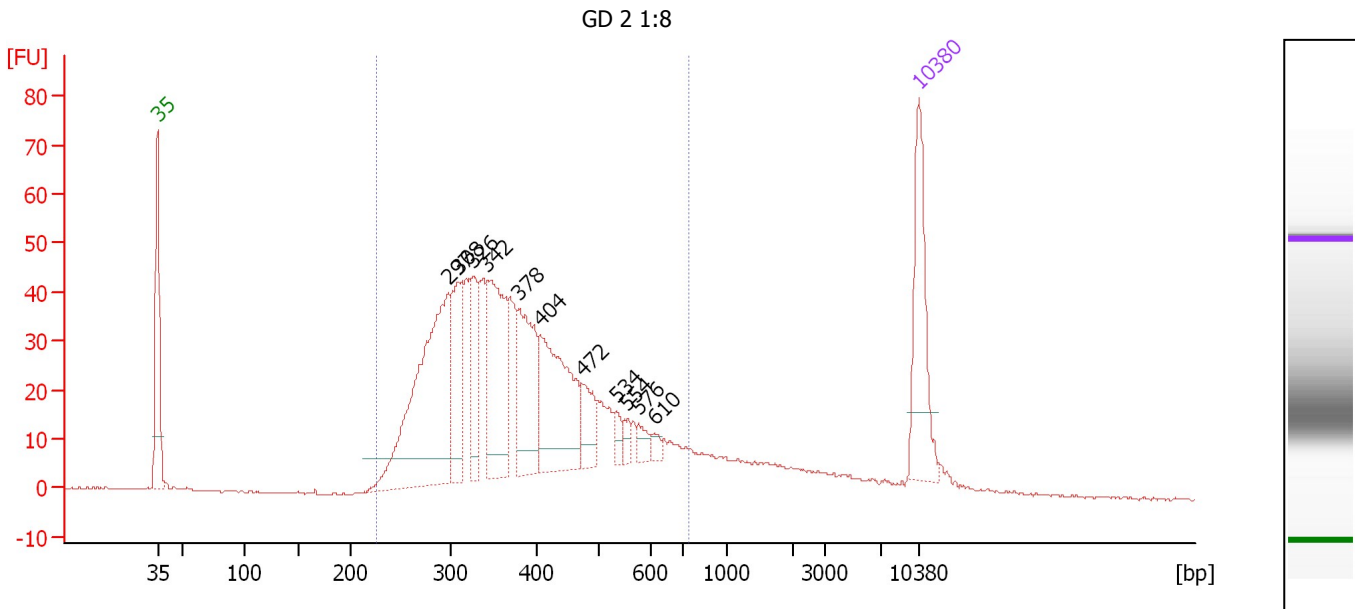
Region table for sample 6 : GD 1 1:5

From [bp]	To [bp]	Average Size [bp]	Molarity [pmol/l]	Conc. [pg/μl]	Corr. Area	% of Total	Size distribution in CV [%]	Color
123	136	128	175.6	14.82	6.5	0	1.4	Blue
219	819	389	12,379.6	2,822.91	1,646.5	90	30.8	Dark Blue

Assay Class: High Sensitivity DNA Assay
 Data Path: C:\...ents and Settings\Bioanalyzer\2013-08-09\2013-08-09_009.xad

Created: 8/9/2013 4:29:36 PM
 Modified: 8/13/2013 9:23:36 AM

Electropherogram Summary Continued ...



Overall Results for sample 7 : GD 2 1:8

Number of peaks found: 11 Corr. Area 1: 954.3
 Noise: 0.2

Peak table for sample 7 : GD 2 1:8

Peak	Size [bp]	Conc. [pg/μl]	Molarity [pmol/l]	Observations
1	35	125.00	5,411.3	Lower Marker
2	297	277.88	1,415.9	
3	308	88.71	435.9	
4	326	66.70	310.2	
5	342	142.72	632.5	
6	378	101.48	406.7	
7	404	138.19	518.1	
8	472	35.67	114.5	
9	534	11.54	32.7	
10	554	8.43	23.0	
11	576	10.86	28.6	
12	610	6.32	15.7	
13	10,380	75.00	10.9	Upper Marker

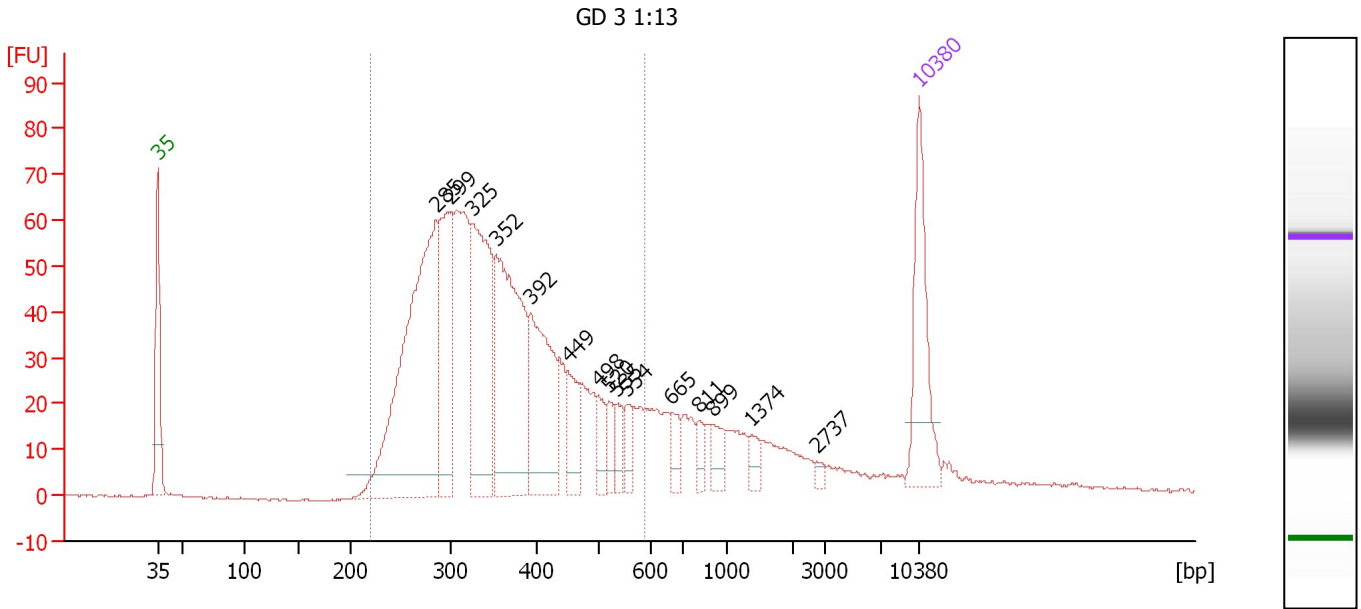
Region table for sample 7 : GD 2 1:8

From [bp]	To [bp]	Average Size [bp]	Molarity [pmol/l]	Conc. [pg/μl]	Corr. Area	% of Total	Size distribution in CV [%]	Color
226	744	389	5,394.5	1,266.46	954.3	87	27.0	Blue

Assay Class: High Sensitivity DNA Assay
 Data Path: C:\...ents and Settings\Bioanalyzer\2013-08-09\2013-08-09_009.xad

Created: 8/9/2013 4:29:36 PM
 Modified: 8/13/2013 9:23:36 AM

Electropherogram Summary Continued ...



Overall Results for sample 8 : GD 3 1:13

Number of peaks found: 15 Corr. Area 1: 1,241.1
 Noise: 0.2

Peak table for sample 8 : GD 3 1:13

Peak	Size [bp]	Conc. [pg/μl]	Molarity [pmol/l]	Observations
1	35	125.00	5,411.3	Lower Marker
2	285	392.41	2,085.3	
3	299	148.42	751.9	
4	325	194.32	904.9	
5	352	224.95	968.9	
6	392	138.29	534.8	
7	449	39.30	132.5	
8	498	23.55	71.7	
9	520	17.70	51.6	
10	535	19.49	55.2	
11	554	17.49	47.8	
12	665	18.86	42.9	
13	811	11.46	21.4	
14	899	19.41	32.7	
15	1,374	10.20	11.2	
16	2,737	4.08	2.3	
17	10,380	75.00	10.9	Upper Marker

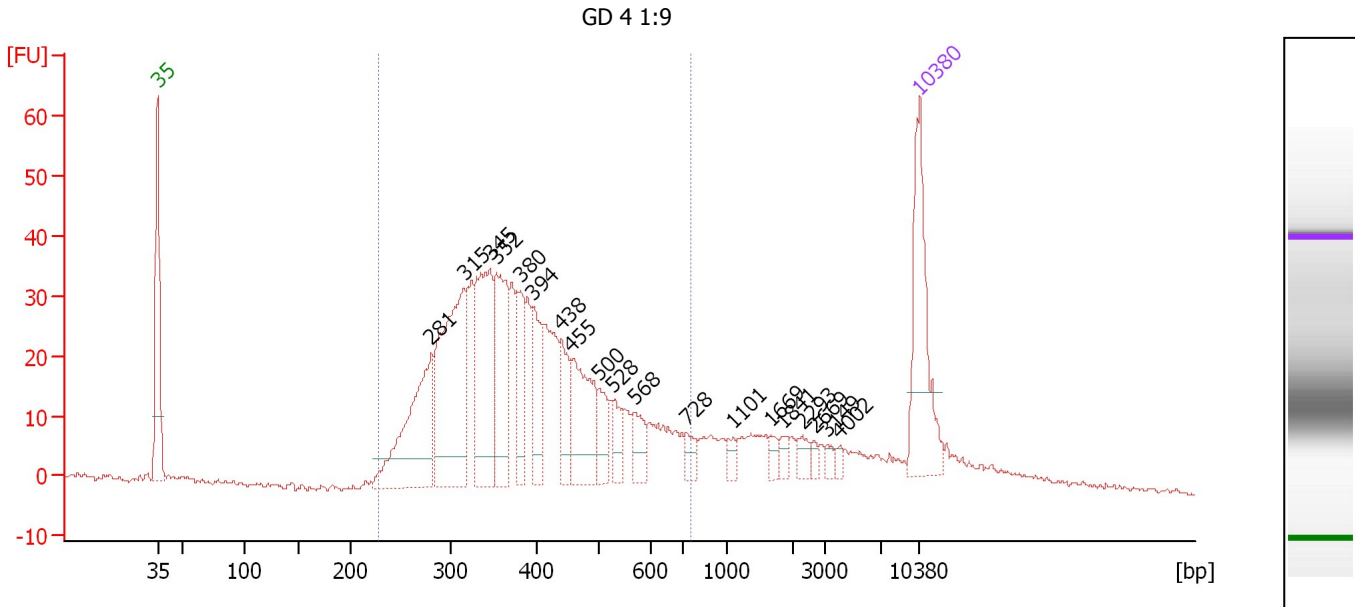
Region table for sample 8 : GD 3 1:13

From [bp]	To [bp]	Average Size [bp]	Molarity [pmol/l]	Conc. [pg/μl]	Corr. Area	% of Total	Size distribution in CV [%]	Color
221	590	358	6,807.5	1,495.29	1,241.1	81	23.9	Blue

Assay Class: High Sensitivity DNA Assay
 Data Path: C:\...ents and Settings\Bioanalyzer\2013-08-09\2013-08-09_009.xad

Created: 8/9/2013 4:29:36 PM
 Modified: 8/13/2013 9:23:36 AM

Electropherogram Summary Continued ...



Overall Results for sample 9 : GD 4 1:9

Number of peaks found: 19 Corr. Area 1: 745.4
 Noise: 0.3

Peak table for sample 9 : GD 4 1:9

Peak	Size [bp]	Conc. [pg/μl]	Molarity [pmol/l]	Observations
1	35	125.00	5,411.3	Lower Marker
2	281	138.33	747.1	
3	315	187.49	900.5	
4	345	125.22	550.3	
5	352	95.22	409.6	
6	380	41.40	165.0	
7	394	46.29	177.8	
8	438	37.35	129.2	
9	455	75.41	250.9	
10	500	25.41	76.9	
11	528	19.87	57.0	
12	568	21.86	58.3	
13	728	12.10	25.2	
14	1,101	7.99	11.0	
15	1,669	6.56	6.0	
16	1,841	6.28	5.2	
17	2,293	8.94	5.9	
18	2,669	4.09	2.3	
19	3,149	4.43	2.1	
20	4,002	4.01	1.5	
21	10,380	75.00	10.9	Upper Marker

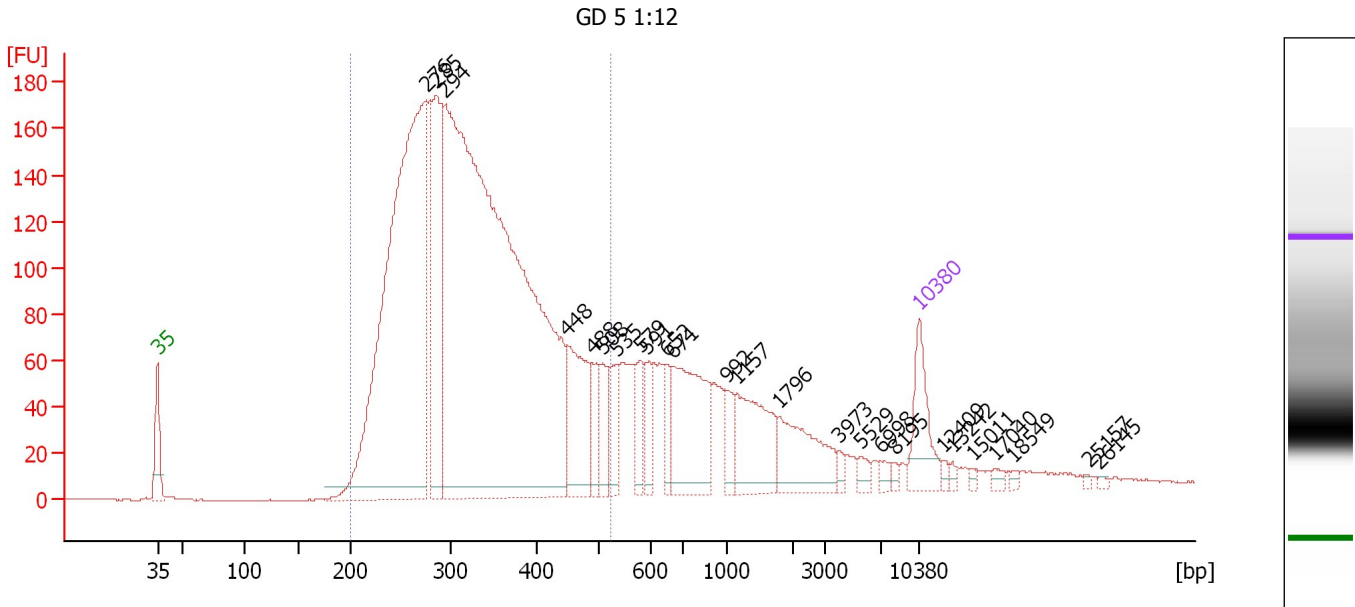
Region table for sample 9 : GD 4 1:9

From [bp]	To [bp]	Average Size [bp]	Molarity [pmol/l]	Conc. [pg/μl]	Corr. Area	% of Total	Size distribution in CV [%]	Color
228	753	398	4,528.8	1,088.25	745.4	79	26.7	Blue

Assay Class: High Sensitivity DNA Assay
 Data Path: C:\...ents and Settings\Bioanalyzer\2013-08-09\2013-08-09_009.xad

Created: 8/9/2013 4:29:36 PM
 Modified: 8/13/2013 9:23:36 AM

Electropherogram Summary Continued ...



Overall Results for sample 10 : GD 5 1:12

Number of peaks found: 25 Corr. Area 1: 3,381.8
 Noise: 0.2

Peak table for sample 10 : GD 5 1:12

Peak	Size [bp]	Conc. [pg/μl]	Molarity [pmol/l]	Observations
1	35	125.00	5,411.3	Lower Marker
2	276	1,297.42	7,130.5	
3	285	353.55	1,878.6	
4	294	2,285.50	11,777.7	
5	448	173.09	585.0	
6	488	52.59	163.3	
7	508	58.65	175.1	
8	535	56.02	158.5	
9	579	50.09	131.0	
10	591	45.75	117.3	
11	652	44.29	102.9	
12	671	212.90	481.1	
13	992	34.41	52.5	
14	1,157	136.45	178.8	
15	1,796	111.41	94.0	
16	3,973	10.08	3.8	
17	5,529	13.07	3.6	
18	6,998	9.58	2.1	
19	8,195	6.32	1.2	
20	10,380	75.00	10.9	Upper Marker
21	12,409	0.00	0.0	
22	13,242	0.00	0.0	
23	15,011	0.00	0.0	
24	17,040	0.00	0.0	
25	18,549	0.00	0.0	
26	25,157	0.00	0.0	

Assay Class: High Sensitivity DNA Assay
Data Path: C:\...ents and Settings\Bioanalyzer\2013-08-09\2013-08-09_009.xad

Created: 8/9/2013 4:29:36 PM
Modified: 8/13/2013 9:23:36 AM

Electropherogram Summary Continued ...**... Peak table for sample 10 : GD 5 1:12**

Peak	Size [bp]	Conc. [pg/ μ l]	Molarity [pmol/l]	Observations
27	26,145	0.00	0.0	

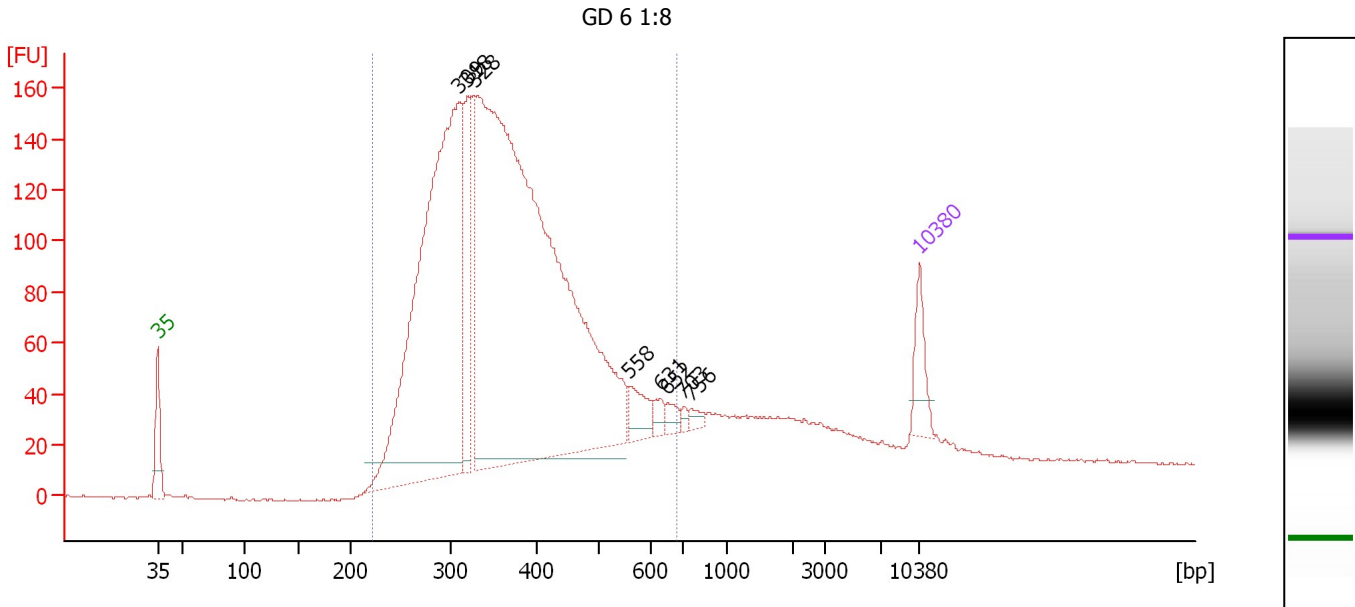
Region table for sample 10 : GD 5 1:12

From [bp]	To [bp]	Average Size [bp]	Molarity [pmol/l]	Conc. [pg/ μ l]	Corr. Area	% of Total	Size distribution in CV [%]	Color
200	523	329	20,131.7	4,098.27	3,381.8	75	22.4	

Assay Class: High Sensitivity DNA Assay
 Data Path: C:\...ents and Settings\Bioanalyzer\2013-08-09\2013-08-09_009.xad

Created: 8/9/2013 4:29:36 PM
 Modified: 8/13/2013 9:23:36 AM

Electropherogram Summary Continued ...



Overall Results for sample 11 : GD 6 1:8

Number of peaks found: 8 Corr. Area 1: 3,030.2
 Noise: 0.3

Peak table for sample 11 : GD 6 1:8

Peak	Size [bp]	Conc. [pg/μl]	Molarity [pmol/l]	Observations
1	35	125.00	5,411.3	Lower Marker
2	309	1,803.93	8,853.3	
3	318	278.27	1,324.1	
4	328	3,097.11	14,300.8	
5	558	75.31	204.5	
6	631	30.19	72.5	
7	652	27.25	63.4	
8	703	11.58	24.9	
9	756	19.06	38.2	
10	10,380	75.00	10.9	Upper Marker

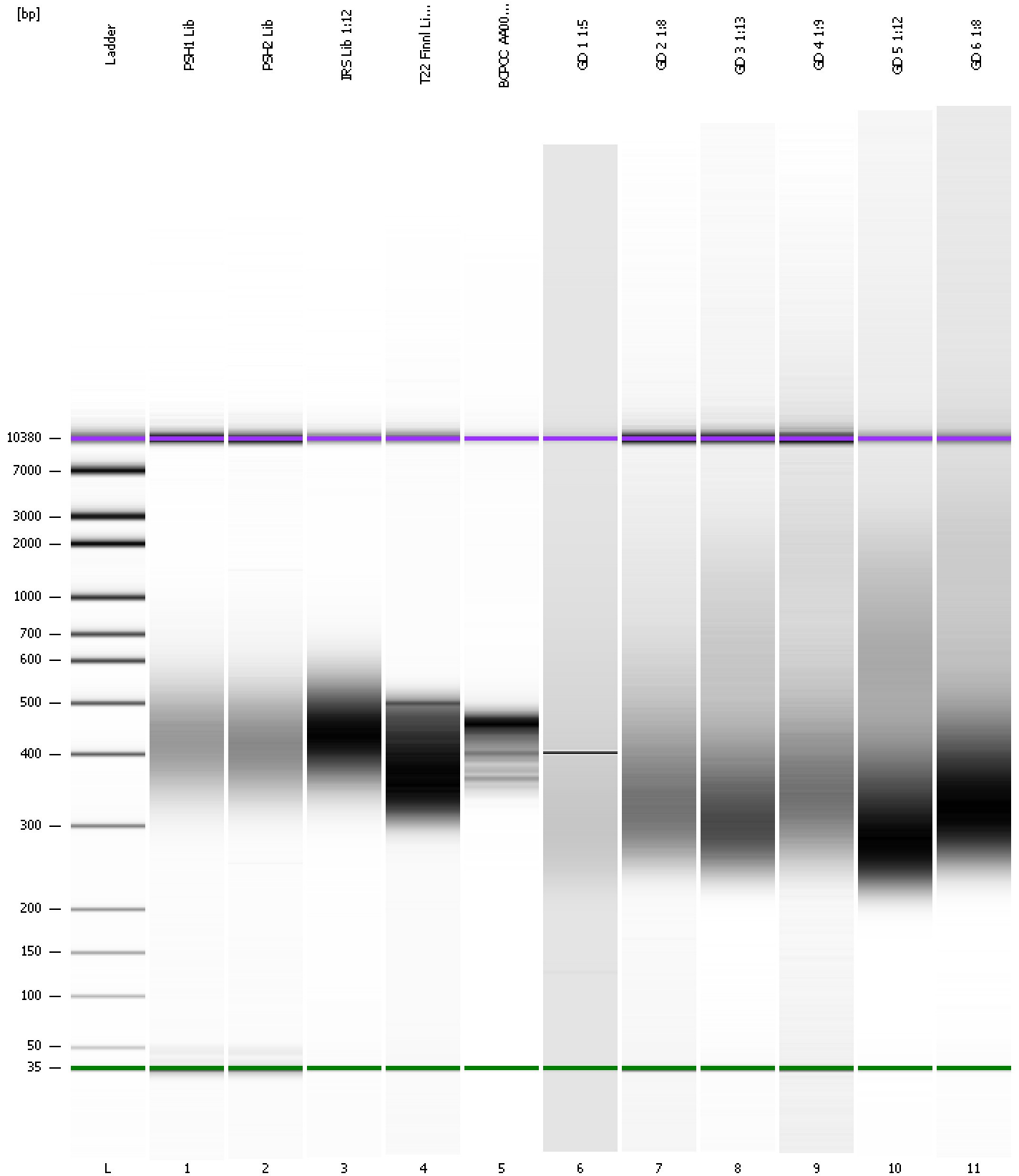
Region table for sample 11 : GD 6 1:8

From [bp]	To [bp]	Average Size [bp]	Molarity [pmol/l]	Conc. [pg/μl]	Corr. Area	% of Total	Size distribution in CV [%]	Color
221	682	376	24,774.3	5,691.42	3,030.2	85	24.9	Blue

Assay Class: High Sensitivity DNA Assay
Data Path: C:\...ents and Settings\Bioanalyzer\2013-08-09\2013-08-09_009.xad

Created: 8/9/2013 4:29:36 PM
Modified: 8/13/2013 9:23:36 AM

Gel Image



Assay Class: High Sensitivity DNA Assay
 Data Path: C:\...ents and Settings\Bioanalyzer\2013-08-09\2013-08-09_009.xad

Created: 8/9/2013 4:29:36 PM
 Modified: 8/13/2013 9:23:36 AM

Run Logbook

Description	Number	Source	Category	Sub Category	Time	Time Zone	User	Host
Run ended on port 1 (Number of wells acquired: 12)		Instrument	Run		8/9/2013 5:10:05 PM	(GMT --07:00) Pacific Standard Time	UC Davis	D8XSMGH1
Run started on port 1 (File: C:\Documents and Settings\Bioanalyzer\2013-08-09\2013-08-09_009.xad)		Instrument	Run		8/9/2013 4:29:42 PM	(GMT --07:00) Pacific Standard Time	UC Davis	D8XSMGH1
Product Number : G2938B		Instrument	Run		8/9/2013 4:29:42 PM	(GMT --07:00) Pacific Standard Time	UC Davis	D8XSMGH1
Name :		Instrument	Run		8/9/2013 4:29:42 PM	(GMT --07:00) Pacific Standard Time	UC Davis	D8XSMGH1
Vendor : Agilent Technologies		Instrument	Run		8/9/2013 4:29:42 PM	(GMT --07:00) Pacific Standard Time	UC Davis	D8XSMGH1
Serial# : DE13701086		Instrument	Run		8/9/2013 4:29:42 PM	(GMT --07:00) Pacific Standard Time	UC Davis	D8XSMGH1
Firmware : C.01.069		Instrument	Run		8/9/2013 4:29:42 PM	(GMT --07:00) Pacific Standard Time	UC Davis	D8XSMGH1
Cartridge : Electrode		Instrument	Run		8/9/2013 4:29:42 PM	(GMT --07:00) Pacific Standard Time	UC Davis	D8XSMGH1