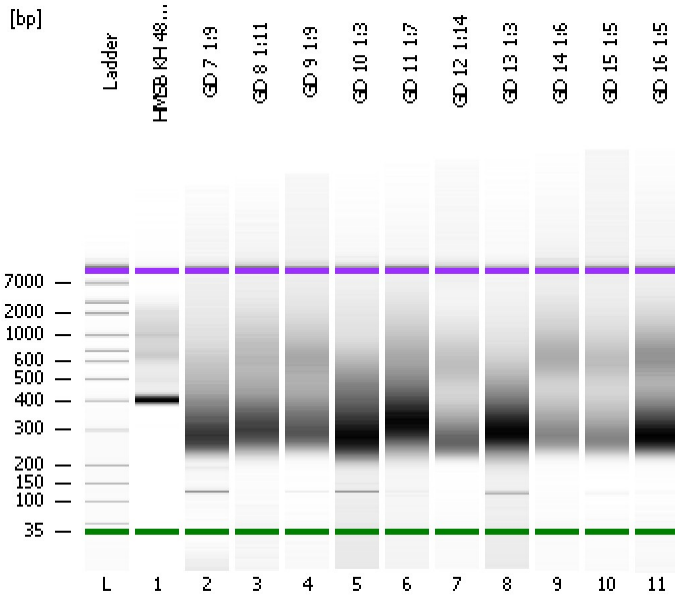


Assay Class: High Sensitivity DNA Assay
Data Path: C:\...ents and Settings\Bioanalyzer\2013-08-12\2013-08-12_003.xad

Created: 8/12/2013 1:13:32 PM
Modified: 8/12/2013 1:56:14 PM

Electrophoresis File Run Summary



Instrument Information:

Instrument Name: DE13701086 Firmware: C.01.069
Serial#: DE13701086 Type: G2938B

Assay Information:

Assay Origin Path: C:\Program Files\Agilent\2100 bioanalyzer\2100 expert\assays\dsDNA\High Sensitivity DNA.xsy
Assay Class: High Sensitivity DNA Assay
Version: 1.03
Assay Comments: Copyright © 2003-2010 Agilent Technologies

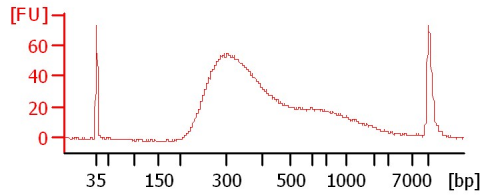
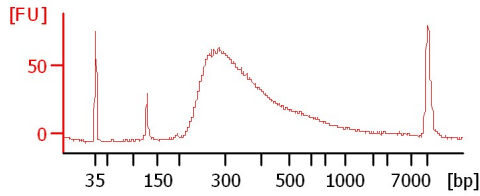
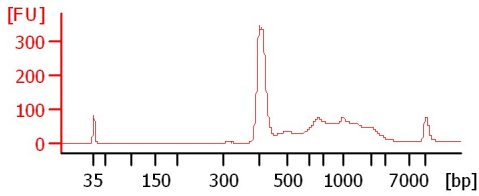
Chip Information:

Chip Lot #: Reagent Kit Lot #: Chip Comments:

HMSB KH 48 16s 1:25

GD 7 1:9

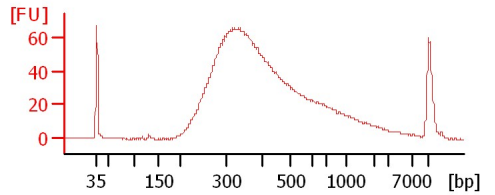
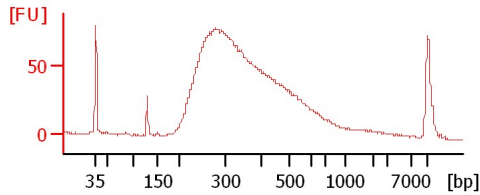
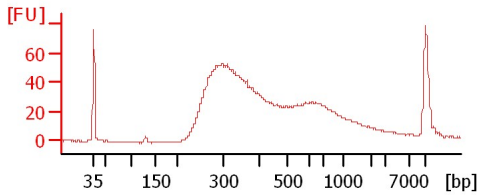
GD 8 1:11



GD 9 1:9

GD 10 1:3

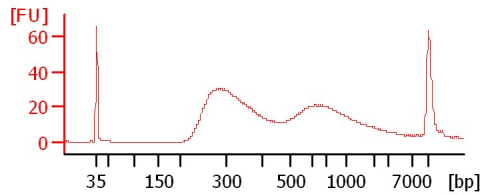
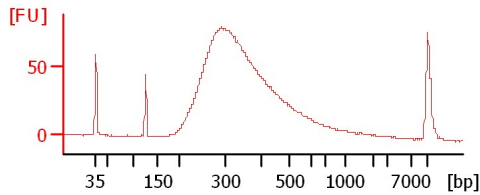
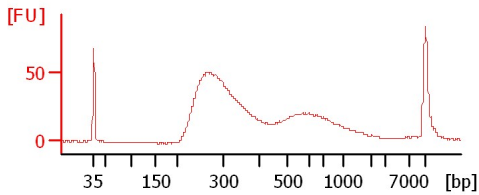
GD 11 1:7



GD 12 1:14

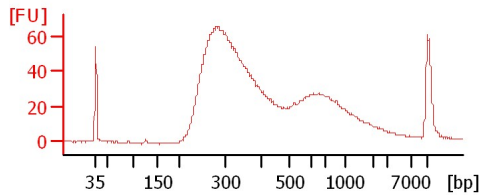
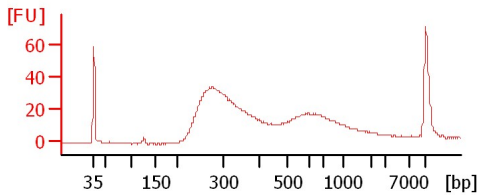
GD 13 1:3

GD 14 1:6



GD 15 1:5

GD 16 1:5



Assay Class: High Sensitivity DNA Assay
 Data Path: C:\...ents and Settings\Bioanalyzer\2013-08-12\2013-08-12_003.xad

Created: 8/12/2013 1:13:32 PM
 Modified: 8/12/2013 1:56:14 PM

Electrophoresis File Run Summary (Chip Summary)

Sample Name	Sample Comment	Rest. Digest	Status	Observation	Result Label	Result Color
HMSB KH 48 16s 1:25		<input type="checkbox"/>	✓			
GD 7 1:9		<input type="checkbox"/>	✓			
GD 8 1:11		<input type="checkbox"/>	✓			
GD 9 1:9		<input type="checkbox"/>	✓			
GD 10 1:3		<input type="checkbox"/>	✓			
GD 11 1:7		<input type="checkbox"/>	✓			
GD 12 1:14		<input type="checkbox"/>	✓			
GD 13 1:3		<input type="checkbox"/>	✓			
GD 14 1:6		<input type="checkbox"/>	✓			
GD 15 1:5		<input type="checkbox"/>	✓			
GD 16 1:5		<input type="checkbox"/>	✓			
Ladder		<input type="checkbox"/>				

Chip Lot #

Reagent Kit Lot #

Chip Comments :

Assay Class: High Sensitivity DNA Assay
Data Path: C:\...ents and Settings\Bioanalyzer\2013-08-12\2013-08-12_003.xad

Created: 8/12/2013 1:13:32 PM
Modified: 8/12/2013 1:56:14 PM

Electrophoresis Assay Details

General Analysis Settings

Number of Available Sample and Ladder Wells (Max.) : 12
Minimum Visible Range [s] : 32
Maximum Visible Range [s] : 138
Start Analysis Time Range [s] : 33
End Analysis Time Range [s] : 137.5
Ladder Concentration [pg/μl] : 1950
Uses Standard Area for Ladder Fragments
Lower Marker Concentration [pg/μl] : 125
Upper Marker Concentration [pg/μl] : 75
Used Upper Marker for Quantitation
Standard Curve Fit is Point to Point
Show Data Aligned to Lower and Upper Marker

Integrator Settings

Integration Start Time [s] : 33.05
Integration End Time [s] : 137
Slope Threshold : 0.8
Height Threshold [FU] : 5
Area Threshold : 0.1
Width Threshold [s] : 0.6
Baseline Plateau [s] : 0.5

Filter Settings

Filter Width [s] : 0.5
Polynomial Order : 4

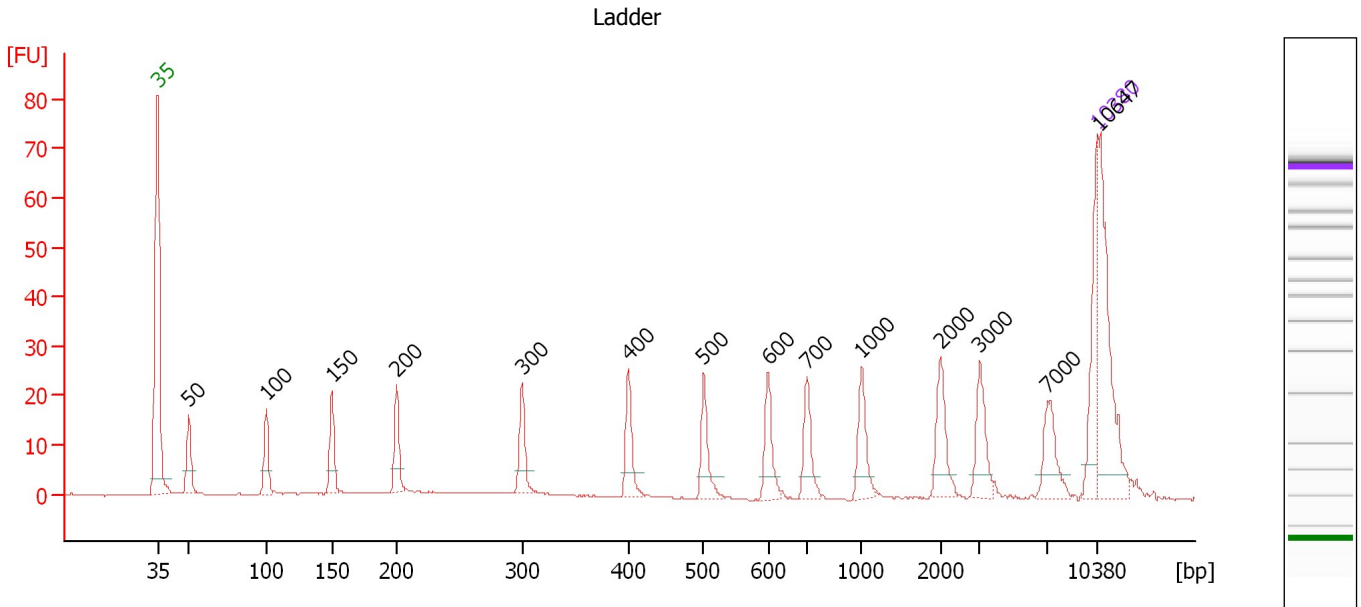
Ladder

Ladder Peak	Size	Area
1	35	160
2	50	210
3	100	208
4	150	221
5	200	242
6	300	270
7	400	305
8	500	306
9	600	336
10	700	321
11	1000	366
12	2000	413
13	3000	411
14	7000	400
15	10380	214

Assay Class: High Sensitivity DNA Assay
 Data Path: C:\...ents and Settings\Bioanalyzer\2013-08-12\2013-08-12_003.xad

Created: 8/12/2013 1:13:32 PM
 Modified: 8/12/2013 1:56:14 PM

Electropherogram Summary



Overall Results for Ladder

Noise: 0.1

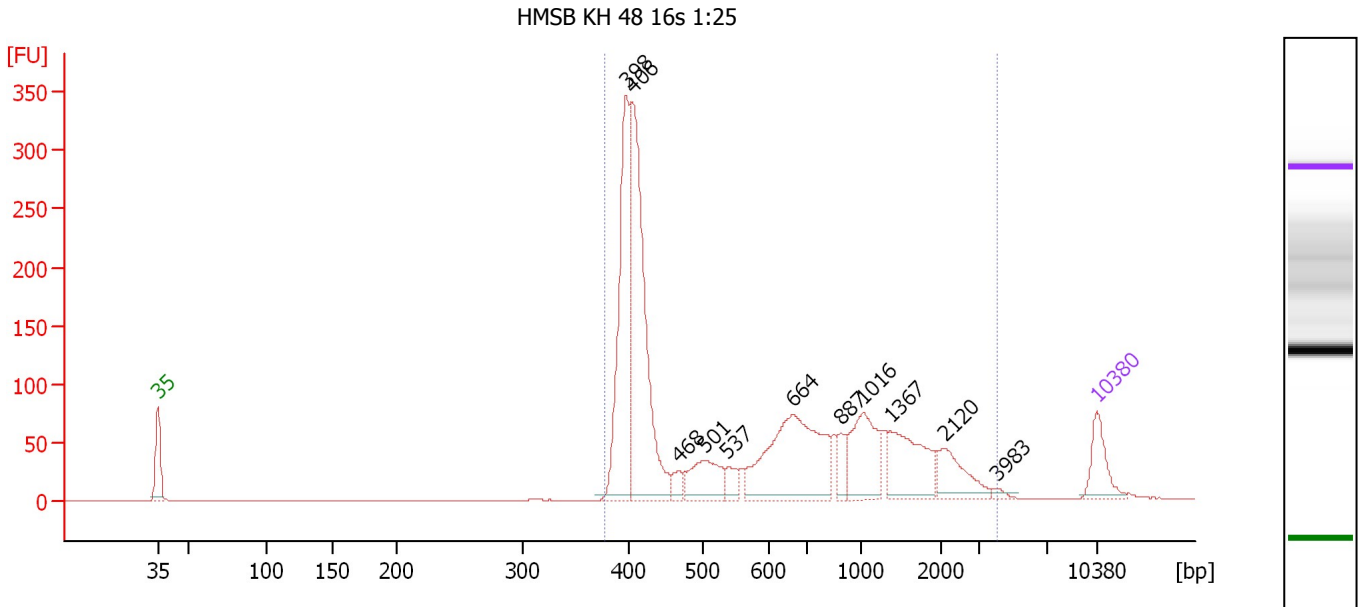
Peak table for Ladder

Peak	Size [bp]	Conc. [pg/μl]	Molarity [pmol/l]	Observations
1	35	125.00	5,411.3	Lower Marker
2	50	150.00	4,545.5	Ladder Peak
3	100	150.00	2,272.7	Ladder Peak
4	150	150.00	1,515.2	Ladder Peak
5	200	150.00	1,136.4	Ladder Peak
6	300	150.00	757.6	Ladder Peak
7	400	150.00	568.2	Ladder Peak
8	500	150.00	454.5	Ladder Peak
9	600	150.00	378.8	Ladder Peak
10	700	150.00	324.7	Ladder Peak
11	1,000	150.00	227.3	Ladder Peak
12	2,000	150.00	113.6	Ladder Peak
13	3,000	150.00	75.8	Ladder Peak
14	7,000	150.00	32.5	Ladder Peak
15	10,380	75.00	10.9	Upper Marker
16	10,647	0.00	0.0	

Assay Class: High Sensitivity DNA Assay
 Data Path: C:\...ents and Settings\Bioanalyzer\2013-08-12\2013-08-12_003.xad

Created: 8/12/2013 1:13:32 PM
 Modified: 8/12/2013 1:56:14 PM

Electropherogram Summary Continued ...



Overall Results for sample 1 : HMSB KH 48 16s 1:25

Number of peaks found: 11 Corr. Area 1: 2,144.3
 Noise: 0.1

Peak table for sample 1 : HMSB KH 48 16s 1:25

Peak	Size [bp]	Conc. [pg/μl]	Molarity [pmol/l]	Observations
1	35	125.00	5,411.3	Lower Marker
2	398	520.55	1,980.7	
3	406	692.01	2,582.7	
4	468	35.51	115.0	
5	501	133.50	403.5	
6	537	38.99	109.9	
7	664	439.51	1,003.4	
8	887	44.01	75.2	
9	1,016	179.70	267.9	
10	1,367	181.56	201.3	
11	2,120	93.99	67.2	
12	3,983	10.56	4.0	
13	10,380	75.00	10.9	Upper Marker

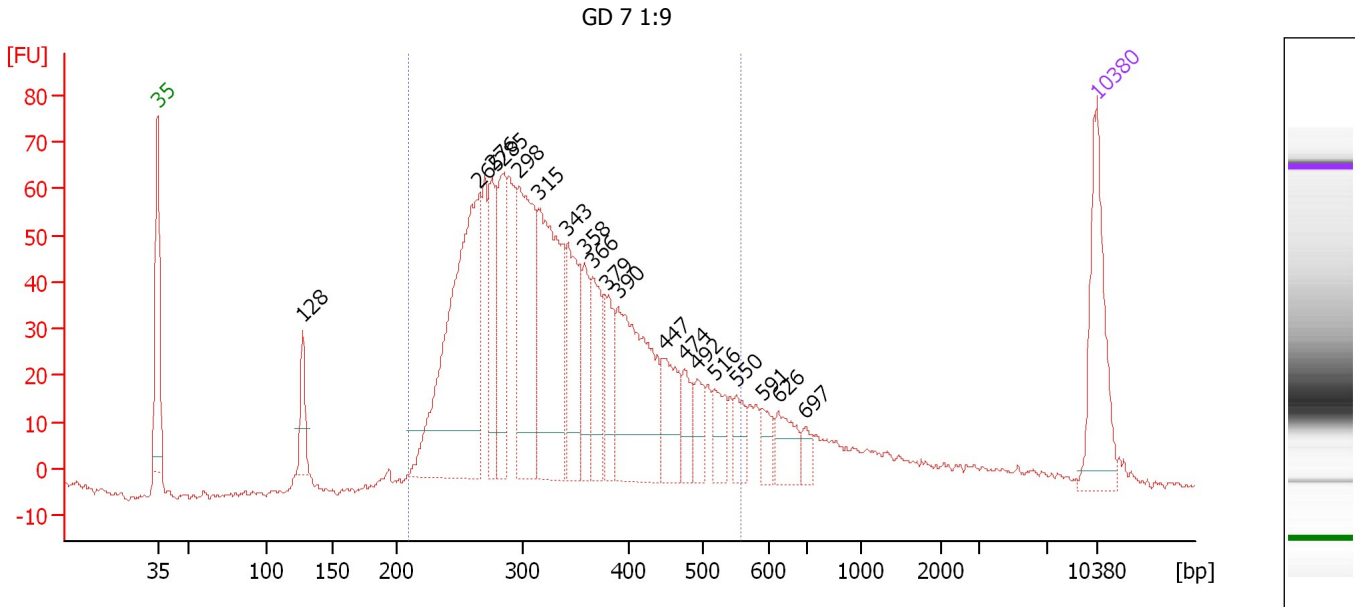
Region table for sample 1 : HMSB KH 48 16s 1:25

From [bp]	To [bp]	Average Size [bp]	Molarity [pmol/l]	Conc. [pg/μl]	Corr. Area	% of Total	Size distribution in CV [%]	Color
378	4,017	813	6,823.5	2,453.89	2,144.3	99	73.0	Blue

Assay Class: High Sensitivity DNA Assay
 Data Path: C:\...ents and Settings\Bioanalyzer\2013-08-12\2013-08-12_003.xad

Created: 8/12/2013 1:13:32 PM
 Modified: 8/12/2013 1:56:14 PM

Electropherogram Summary Continued ...



Setpoint Deviations for sample 2 : GD 7 1:9

Height Threshold [FU] : 10

Overall Results for sample 2 : GD 7 1:9

Number of peaks found: 19 Corr. Area 1: 1,326.6
 Noise: 0.7

Peak table for sample 2 : GD 7 1:9

Peak	Size [bp]	Conc. [pg/μl]	Molarity [pmol/l]	Observations
1	35	125.00	5,411.3	Lower Marker
2	128	37.43	444.3	
3	265	333.24	1,902.1	
4	276	79.32	435.7	
5	285	84.75	450.3	
6	298	165.05	840.2	
7	315	201.70	970.3	
8	343	94.30	416.5	
9	358	49.63	209.8	
10	366	61.86	255.8	
11	379	37.70	150.6	
12	390	168.58	654.6	
13	447	52.43	177.6	
14	474	27.92	89.3	
15	492	23.05	71.0	
16	516	28.77	84.5	
17	550	21.95	60.4	
18	591	16.92	43.4	
19	626	30.49	73.8	
20	697	11.45	24.9	
21	10,380	75.00	10.9	Upper Marker

Assay Class: High Sensitivity DNA Assay
Data Path: C:\...ents and Settings\Bioanalyzer\2013-08-12\2013-08-12_003.xad

Created: 8/12/2013 1:13:32 PM
Modified: 8/12/2013 1:56:14 PM

Electropherogram Summary Continued ...

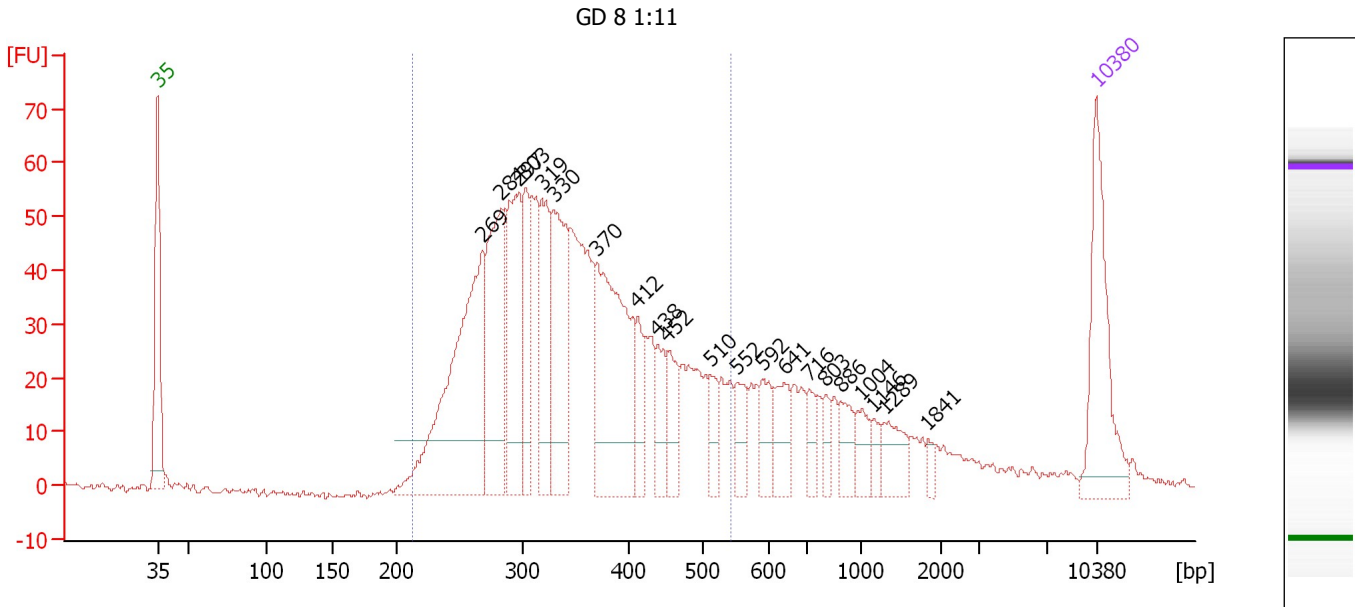
... Region table for sample 2 : GD 7 1:9

From [bp]	To [bp]	Average Size [bp]	Molarity [pmol/l]	Conc. [pg/μl]	Corr. Area	% of Total	Size distribution in CV [%]	Color
210	558	342	7,836.3	1,646.90	1,326.6	84	23.4	■

Assay Class: High Sensitivity DNA Assay
 Data Path: C:\...ents and Settings\Bioanalyzer\2013-08-12\2013-08-12_003.xad

Created: 8/12/2013 1:13:32 PM
 Modified: 8/12/2013 1:56:14 PM

Electropherogram Summary Continued ...



Setpoint Deviations for sample 3 : GD 8 1:11

Height Threshold [FU] : 10

Overall Results for sample 3 : GD 8 1:11

Number of peaks found: 21 Corr. Area 1: 1,157.2
 Noise: 0.7


Peak table for sample 3 : GD 8 1:11

Peak	Size [bp]	Conc. [pg/μl]	Molarity [pmol/l]	Observations
1	35	125.00	5,411.3	Lower Marker
2	269	255.05	1,437.2	
3	284	141.26	754.6	
4	297	119.25	608.7	
5	303	65.02	325.0	
6	319	83.63	397.7	
7	330	116.18	532.7	
8	370	176.57	723.9	
9	412	31.13	114.4	
10	438	32.09	110.9	
11	452	35.28	118.2	
12	510	18.81	55.9	
13	552	25.44	69.9	
14	592	25.59	65.5	
15	641	31.81	75.2	
16	716	15.59	33.0	
17	803	13.13	24.8	
18	886	21.94	37.5	
19	1,004	16.59	25.0	
20	1,146	9.32	12.3	
21	1,289	23.68	27.8	
22	1,841	5.62	4.6	


Assay Class: High Sensitivity DNA Assay
Data Path: C:\...ents and Settings\Bioanalyzer\2013-08-12\2013-08-12_003.xad

Created: 8/12/2013 1:13:32 PM
Modified: 8/12/2013 1:56:14 PM

Electropherogram Summary Continued ...**... Peak table for sample 3 : GD 8 1:11**

Peak	Size [bp]	Conc. [pg/ μ l]	Molarity [pmol/l]	Observations
23	 10,380	75.00	10.9	Upper Marker

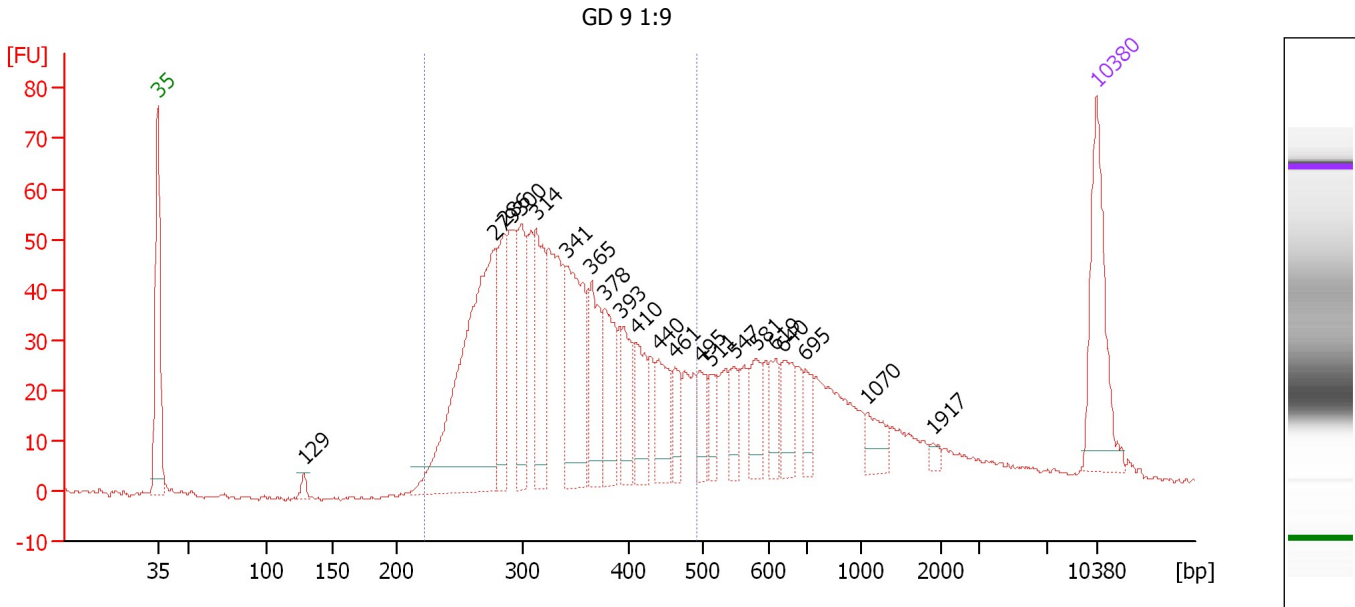
Region table for sample 3 : GD 8 1:11

From [bp]	To [bp]	Average Size [bp]	Molarity [pmol/l]	Conc. [pg/ μ l]	Corr. Area	% of Total	Size distribution in CV [%]	Color
213	541	348	6,484.4	1,397.20	1,157.2	74	22.0	

Assay Class: High Sensitivity DNA Assay
 Data Path: C:\...ents and Settings\Bioanalyzer\2013-08-12\2013-08-12_003.xad

Created: 8/12/2013 1:13:32 PM
 Modified: 8/12/2013 1:56:14 PM

Electropherogram Summary Continued ...



Overall Results for sample 4 : GD 9 1:9

Number of peaks found: 21 Corr. Area 1: 975.0
 Noise: 0.4

Peak table for sample 4 : GD 9 1:9

Peak	Size [bp]	Conc. [pg/μl]	Molarity [pmol/l]	Observations
1	35	125.00	5,411.3	Lower Marker
2	129	8.18	96.4	
3	279	318.48	1,729.7	
4	286	75.66	401.0	
5	300	76.09	384.6	
6	314	89.90	434.4	
7	341	130.63	580.0	
8	365	70.78	293.7	
9	378	67.39	270.3	
10	393	48.29	186.2	
11	410	44.07	162.8	
12	440	45.73	157.4	
13	461	24.83	81.5	
14	495	26.75	81.9	
15	511	22.47	66.7	
16	547	22.38	62.0	
17	581	33.32	86.8	
18	619	23.31	57.0	
19	640	35.20	83.3	
20	695	20.92	45.6	
21	1,070	20.29	28.7	
22	1,917	4.39	3.5	
23	10,380	75.00	10.9	Upper Marker

Assay Class: High Sensitivity DNA Assay
Data Path: C:\...ents and Settings\Bioanalyzer\2013-08-12\2013-08-12_003.xad

Created: 8/12/2013 1:13:32 PM
Modified: 8/12/2013 1:56:14 PM

Electropherogram Summary Continued ...

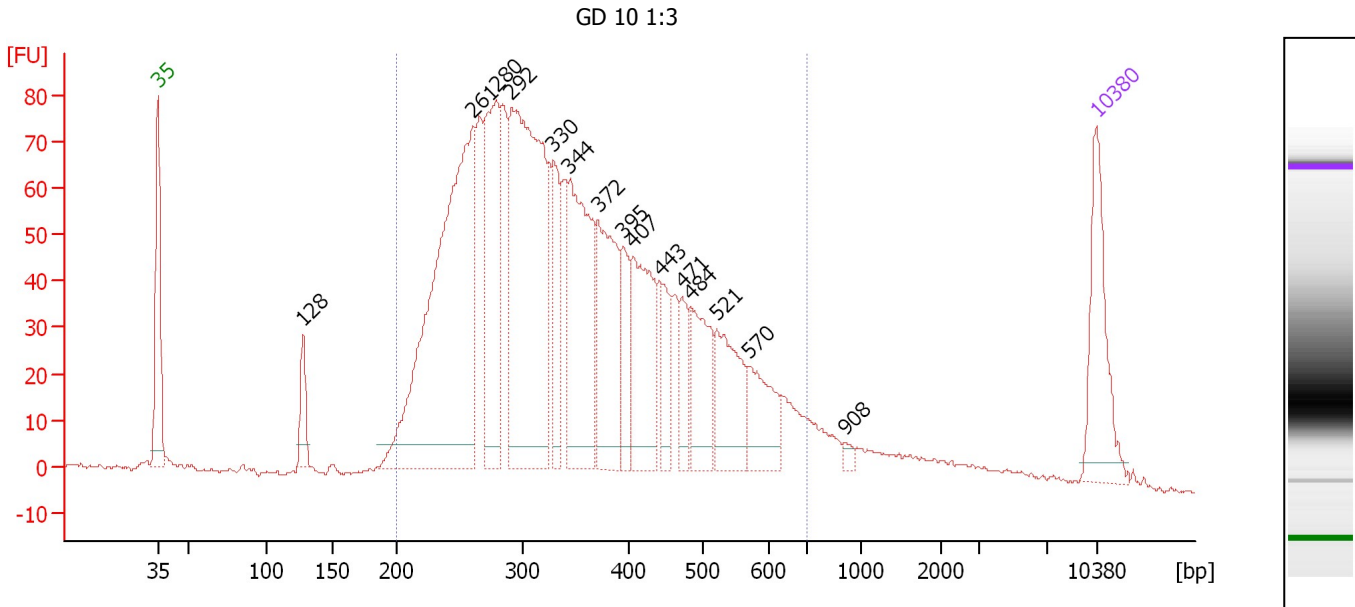
... Region table for sample 4 : GD 9 1:9

From [bp]	To [bp]	Average Size [bp]	Molarity [pmol/l]	Conc. [pg/μl]	Corr. Area	% of Total	Size distribution in CV [%]	Color
223	492	340	6,420.5	1,370.02	975.0	68	19.1	■

Assay Class: High Sensitivity DNA Assay
 Data Path: C:\...ents and Settings\Bioanalyzer\2013-08-12\2013-08-12_003.xad

Created: 8/12/2013 1:13:32 PM
 Modified: 8/12/2013 1:56:14 PM

Electropherogram Summary Continued ...



Overall Results for sample 5 : GD 10 1:3

Number of peaks found: 15 Corr. Area 1: 1,997.3
 Noise: 0.3

Peak table for sample 5 : GD 10 1:3

Peak	Size [bp]	Conc. [pg/μl]	Molarity [pmol/l]	Observations
1	35	125.00	5,411.3	Lower Marker
2	128	37.45	443.7	
3	261	539.44	3,131.1	
4	280	198.73	1,075.7	
5	292	442.41	2,297.3	
6	330	81.90	376.3	
7	344	206.66	909.2	
8	372	137.05	558.5	
9	395	51.57	198.0	
10	407	133.27	496.4	
11	443	47.18	161.2	
12	471	34.74	111.7	
13	484	80.46	252.1	
14	521	88.81	258.4	
15	570	61.30	162.9	
16	908	5.76	9.6	
17	10,380	75.00	10.9	Upper Marker

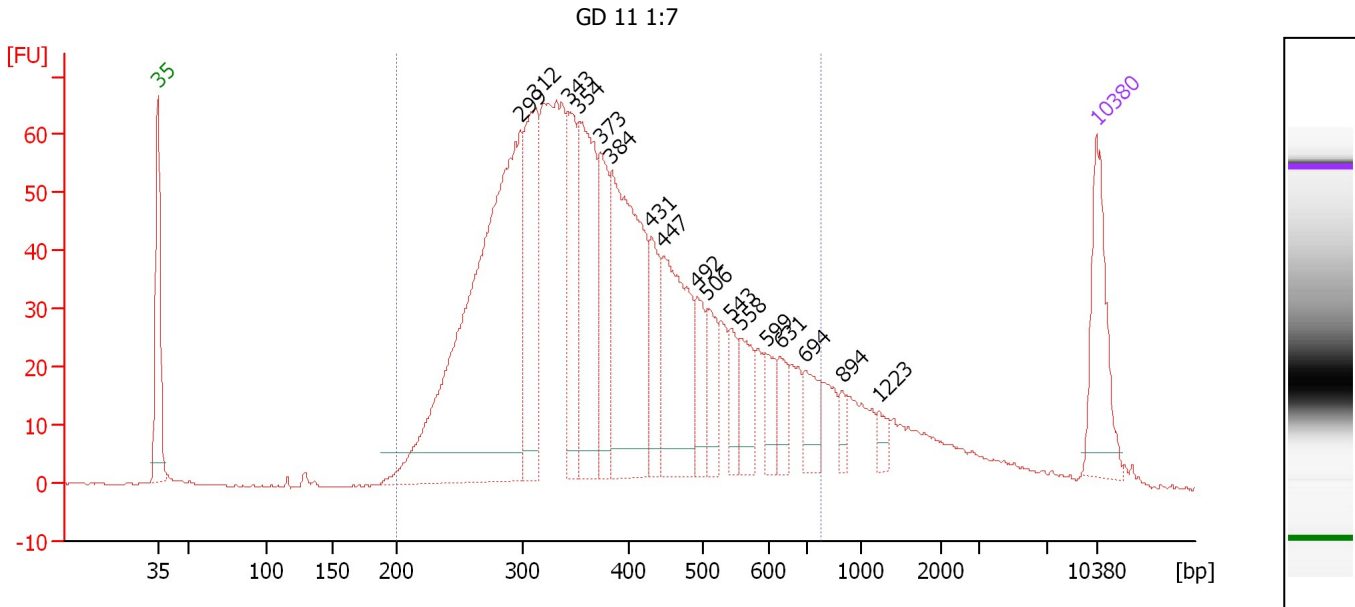
Region table for sample 5 : GD 10 1:3

From [bp]	To [bp]	Average Size [bp]	Molarity [pmol/l]	Conc. [pg/μl]	Corr. Area	% of Total	Size distribution in CV [%]	Color
200	706	361	12,112.1	2,572.08	1,997.3	92	30.1	Blue

Assay Class: High Sensitivity DNA Assay
 Data Path: C:\...ents and Settings\Bioanalyzer\2013-08-12\2013-08-12_003.xad

Created: 8/12/2013 1:13:32 PM
 Modified: 8/12/2013 1:56:14 PM

Electropherogram Summary Continued ...



Overall Results for sample 6 : GD 11 1:7

Number of peaks found: 17 Corr. Area 1: 1,594.1
 Noise: 0.2

Peak table for sample 6 : GD 11 1:7

Peak	Size [bp]	Conc. [pg/μl]	Molarity [pmol/l]	Observations
1	35	125.00	5,411.3	Lower Marker
2	299	701.27	3,553.3	
3	312	182.38	884.7	
4	343	117.86	520.3	
5	354	190.08	813.3	
6	373	108.07	438.5	
7	384	280.91	1,107.4	
8	431	60.46	212.4	
9	447	168.55	571.8	
10	492	49.20	151.6	
11	506	47.72	142.8	
12	543	30.98	86.4	
13	558	45.97	124.8	
14	599	25.38	64.2	
15	631	26.22	62.9	
16	694	36.82	80.3	
17	894	13.29	22.5	
18	1,223	11.80	14.6	
19	10,380	75.00	10.9	Upper Marker

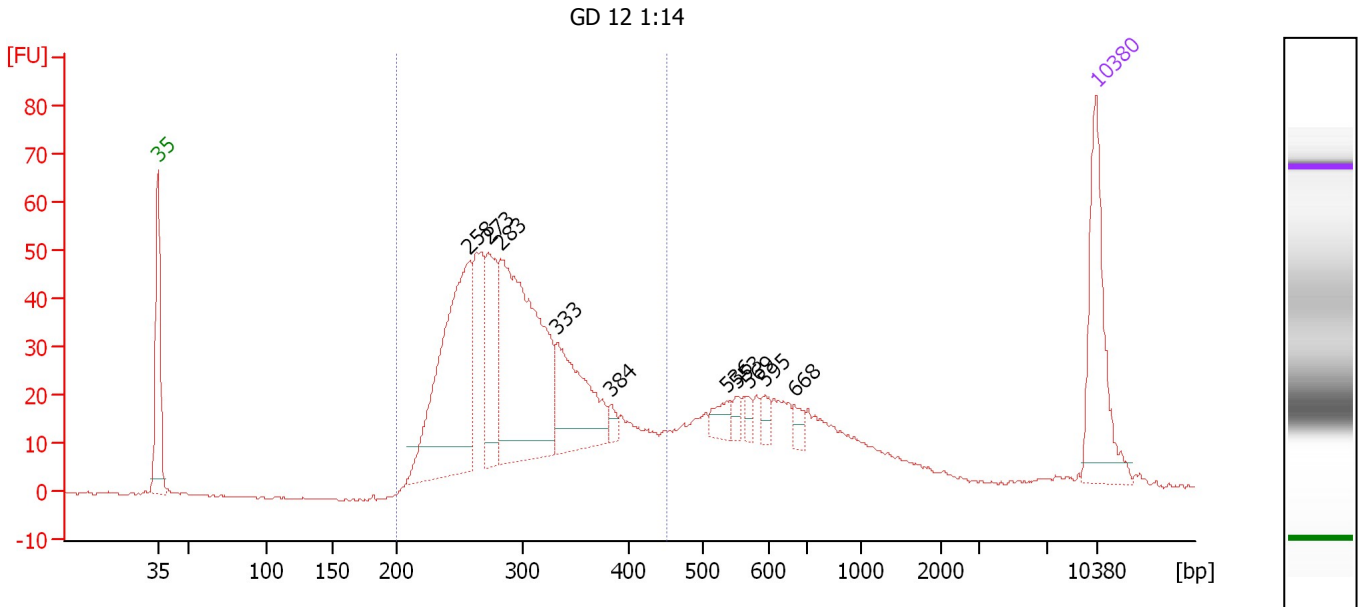
Region table for sample 6 : GD 11 1:7

From [bp]	To [bp]	Average Size [bp]	Molarity [pmol/l]	Conc. [pg/μl]	Corr. Area	% of Total	Size distribution in CV [%]	Color
200	776	392	11,514.6	2,664.21	1,594.1	88	29.8	Blue

Assay Class: High Sensitivity DNA Assay
 Data Path: C:\...ents and Settings\Bioanalyzer\2013-08-12\2013-08-12_003.xad

Created: 8/12/2013 1:13:32 PM
 Modified: 8/12/2013 1:56:14 PM

Electropherogram Summary Continued ...



Overall Results for sample 7 : GD 12 1:14

Number of peaks found: 10 Corr. Area 1: 798.9
 Noise: 0.2

Peak table for sample 7 : GD 12 1:14

Peak	Size [bp]	Conc. [pg/μl]	Molarity [pmol/l]	Observations
1	35	125.00	5,411.3	Lower Marker
2	258	246.33	1,447.9	
3	273	82.14	456.4	
4	283	273.09	1,464.2	
5	333	105.24	478.2	
6	384	8.22	32.5	
7	536	14.97	42.3	
8	553	7.60	20.8	
9	569	7.91	21.1	
10	595	9.31	23.7	
11	668	8.11	18.4	
12	10,380	75.00	10.9	Upper Marker

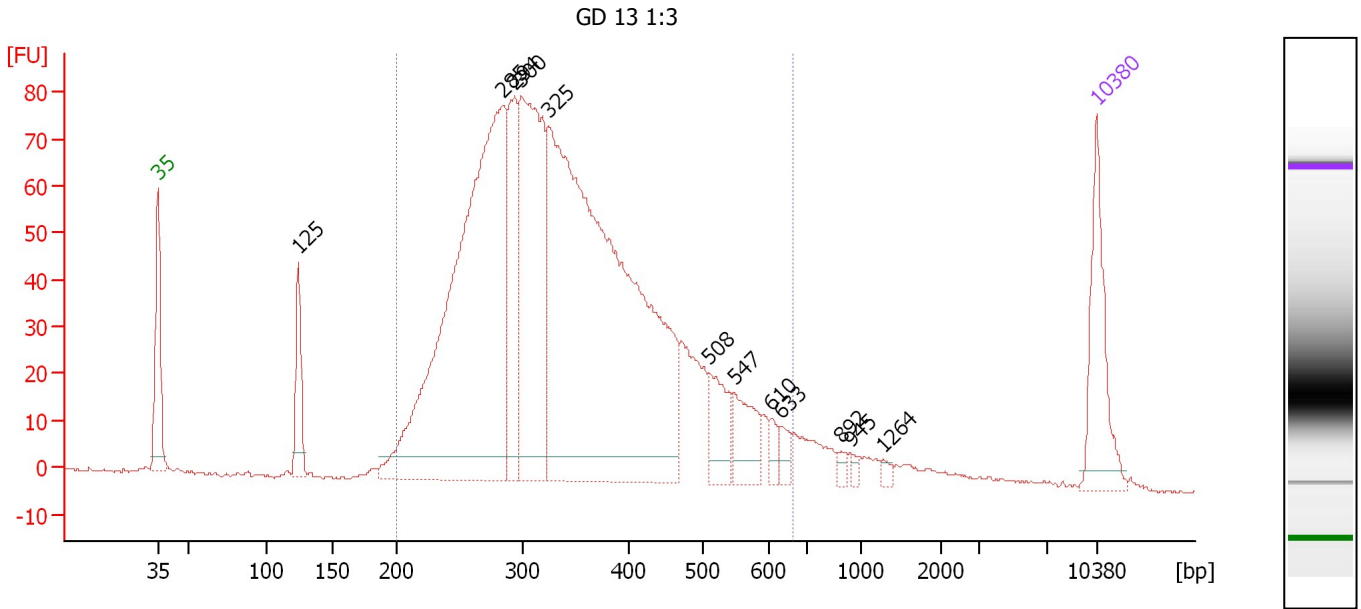
Region table for sample 7 : GD 12 1:14

From [bp]	To [bp]	Average Size [bp]	Molarity [pmol/l]	Conc. [pg/μl]	Corr. Area	% of Total	Size distribution in CV [%]	Color
200	451	304	5,519.2	1,063.93	798.9	68	18.0	Blue

Assay Class: High Sensitivity DNA Assay
 Data Path: C:\...ents and Settings\Bioanalyzer\2013-08-12\2013-08-12_003.xad

Created: 8/12/2013 1:13:32 PM
 Modified: 8/12/2013 1:56:14 PM

Electropherogram Summary Continued ...



Overall Results for sample 8 : GD 13 1:3

Number of peaks found: 12 Corr. Area 1: 1,697.5
 Noise: 0.3

Peak table for sample 8 : GD 13 1:3

Peak	Size [bp]	Conc. [pg/μl]	Molarity [pmol/l]	Observations
1	35	125.00	5,411.3	Lower Marker
2	125	67.74	822.7	
3	285	767.20	4,074.5	
4	294	150.53	776.7	
5	300	341.71	1,727.0	
6	325	979.05	4,558.4	
7	508	54.51	162.6	
8	547	53.48	148.1	
9	610	12.07	30.0	
10	633	14.07	33.7	
11	892	6.30	10.7	
12	945	5.20	8.3	
13	1,264	5.35	6.4	
14	10,380	75.00	10.9	Upper Marker

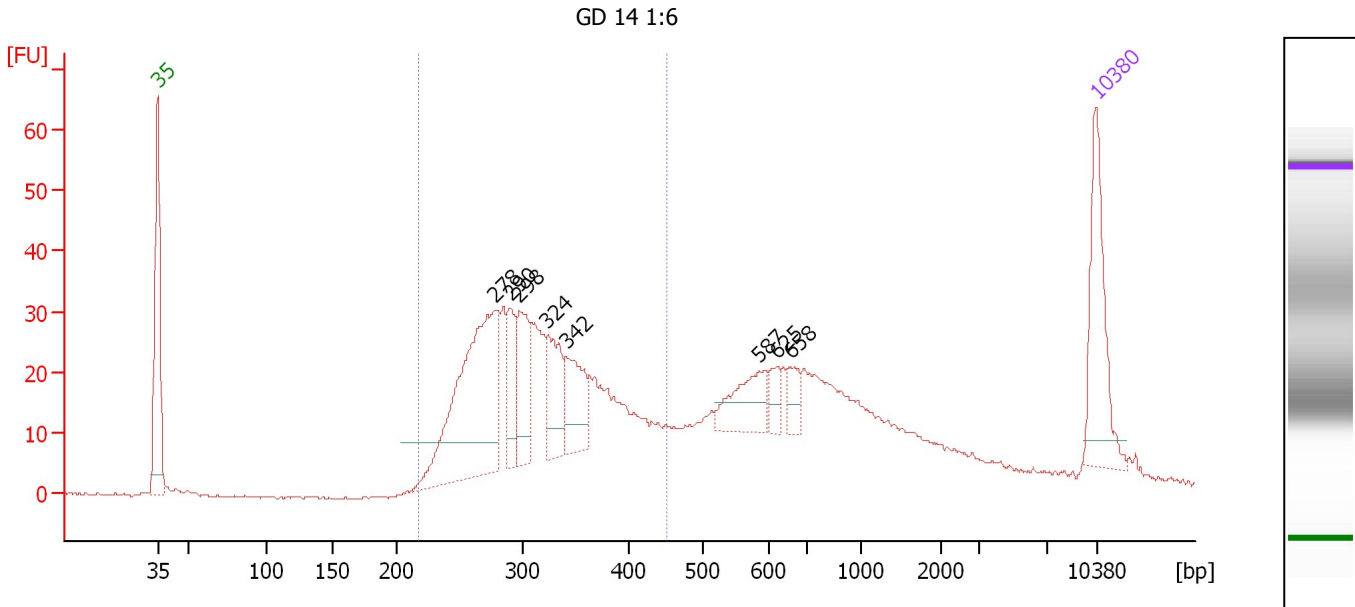
Region table for sample 8 : GD 13 1:3

From [bp]	To [bp]	Average Size [bp]	Molarity [pmol/l]	Conc. [pg/μl]	Corr. Area	% of Total	Size distribution in CV [%]	Color
200	664	351	11,237.9	2,389.87	1,697.5	92	26.6	Blue

Assay Class: High Sensitivity DNA Assay
 Data Path: C:\...ents and Settings\Bioanalyzer\2013-08-12\2013-08-12_003.xad

Created: 8/12/2013 1:13:32 PM
 Modified: 8/12/2013 1:56:14 PM

Electropherogram Summary Continued ...



Overall Results for sample 9 : GD 14 1:6

Number of peaks found: 8 Corr. Area 1: 509.6
 Noise: 0.2

Peak table for sample 9 : GD 14 1:6

Peak	Size [bp]	Conc. [pg/μl]	Molarity [pmol/l]	Observations
1	35	125.00	5,411.3	Lower Marker
2	278	265.74	1,446.2	
3	290	48.45	252.9	
4	298	69.63	353.9	
5	324	64.82	303.4	
6	342	64.56	286.3	
7	587	48.85	126.1	
8	625	15.56	37.7	
9	658	17.87	41.1	
10	10,380	75.00	10.9	Upper Marker

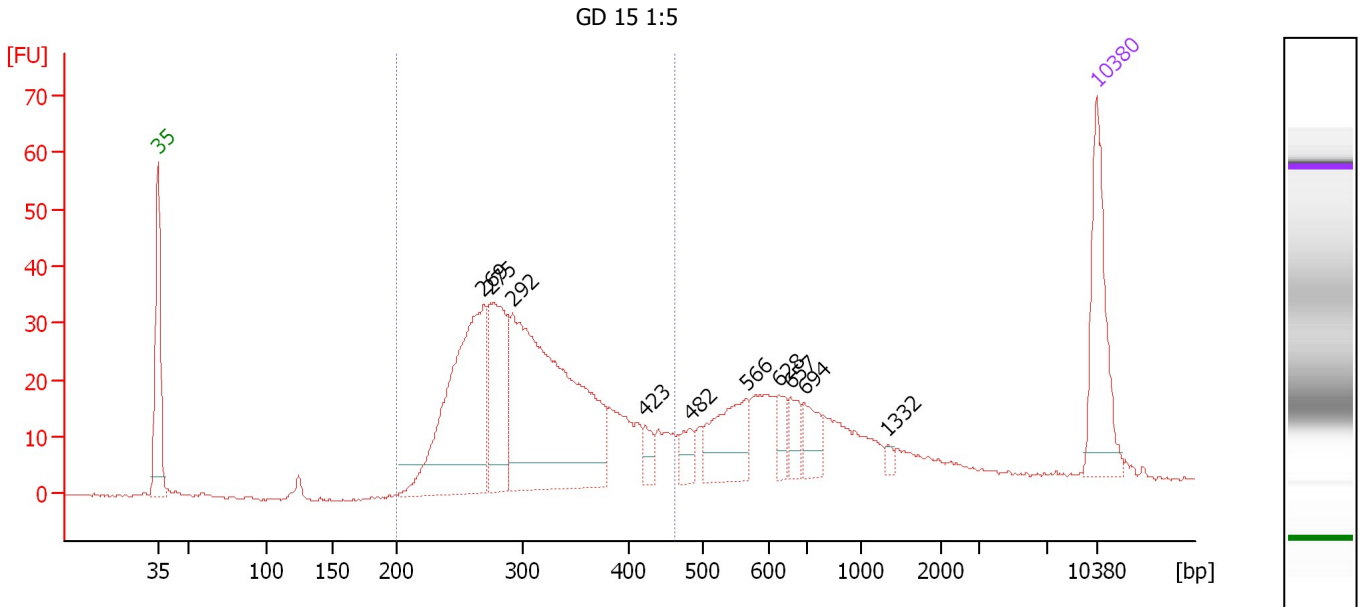
Region table for sample 9 : GD 14 1:6

From [bp]	To [bp]	Average Size [bp]	Molarity [pmol/l]	Conc. [pg/μl]	Corr. Area	% of Total	Size distribution in CV [%]	Color
218	451	320	4,674.7	949.73	509.6	54	17.1	Blue

Assay Class: High Sensitivity DNA Assay
 Data Path: C:\...ents and Settings\Bioanalyzer\2013-08-12\2013-08-12_003.xad

Created: 8/12/2013 1:13:32 PM
 Modified: 8/12/2013 1:56:14 PM

Electropherogram Summary Continued ...



Overall Results for sample 10 : GD 15 1:5

Number of peaks found: 10 Corr. Area 1: 525.8
 Noise: 0.3

Peak table for sample 10 : GD 15 1:5

Peak	Size [bp]	Conc. [pg/μl]	Molarity [pmol/l]	Observations
1	35	125.00	5,411.3	Lower Marker
2	269	267.16	1,503.1	
3	275	121.86	671.5	
4	292	392.72	2,037.6	
5	423	16.49	59.0	
6	482	18.27	57.5	
7	566	66.01	176.8	
8	628	18.95	45.7	
9	657	19.04	43.9	
10	694	27.60	60.3	
11	1,332	4.16	4.7	
12	10,380	75.00	10.9	Upper Marker

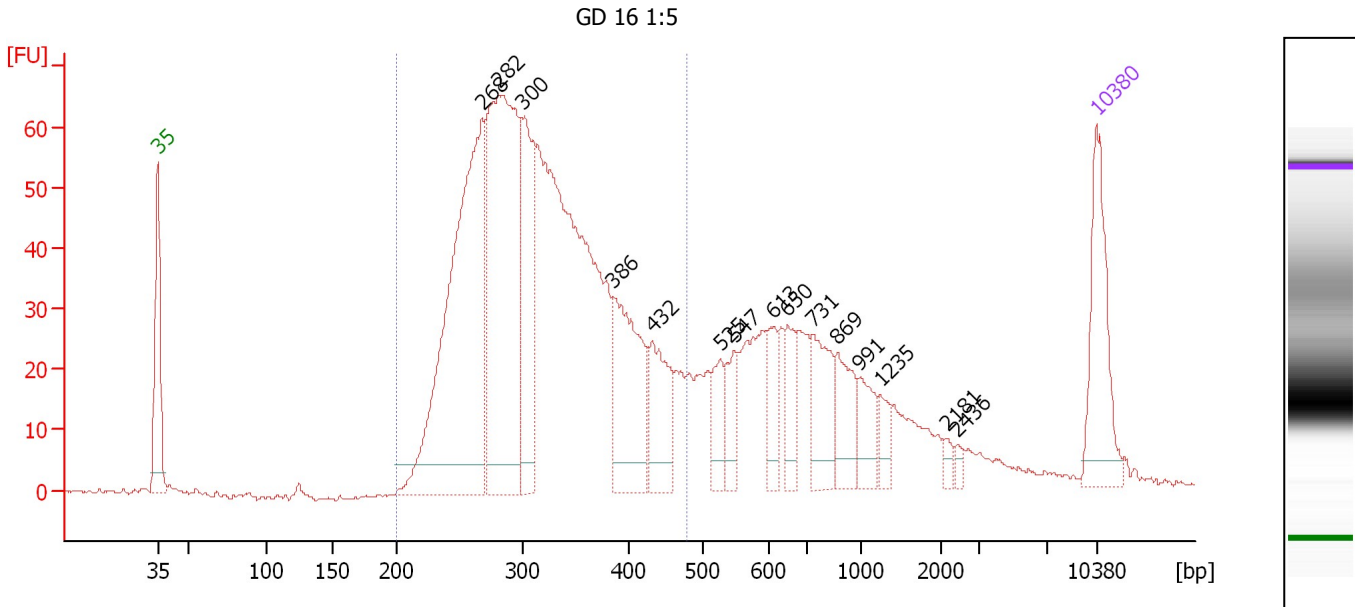
Region table for sample 10 : GD 15 1:5

From [bp]	To [bp]	Average Size [bp]	Molarity [pmol/l]	Conc. [pg/μl]	Corr. Area	% of Total	Size distribution in CV [%]	Color
200	461	314	4,427.0	880.59	525.8	63	18.3	Blue

Assay Class: High Sensitivity DNA Assay
 Data Path: C:\...ents and Settings\Bioanalyzer\2013-08-12\2013-08-12_003.xad

Created: 8/12/2013 1:13:32 PM
 Modified: 8/12/2013 1:56:14 PM

Electropherogram Summary Continued ...



Overall Results for sample 11 : GD 16 1:5

Number of peaks found: 15 Corr. Area 1: 1,110.1
 Noise: 0.4

Peak table for sample 11 : GD 16 1:5

Peak	Size [bp]	Conc. [pg/μl]	Molarity [pmol/l]	Observations
1	35	125.00	5,411.3	Lower Marker
2	268	456.71	2,579.7	
3	282	405.33	2,177.8	
4	300	133.99	675.8	
5	386	137.30	538.5	
6	432	75.43	264.5	
7	525	34.89	100.7	
8	547	33.94	94.0	
9	613	33.92	83.9	
10	650	33.96	79.2	
11	731	62.18	128.9	
12	869	44.44	77.5	
13	991	31.28	47.8	
14	1,235	15.32	18.8	
15	2,181	6.48	4.5	
16	2,436	4.99	3.1	
17	10,380	75.00	10.9	Upper Marker

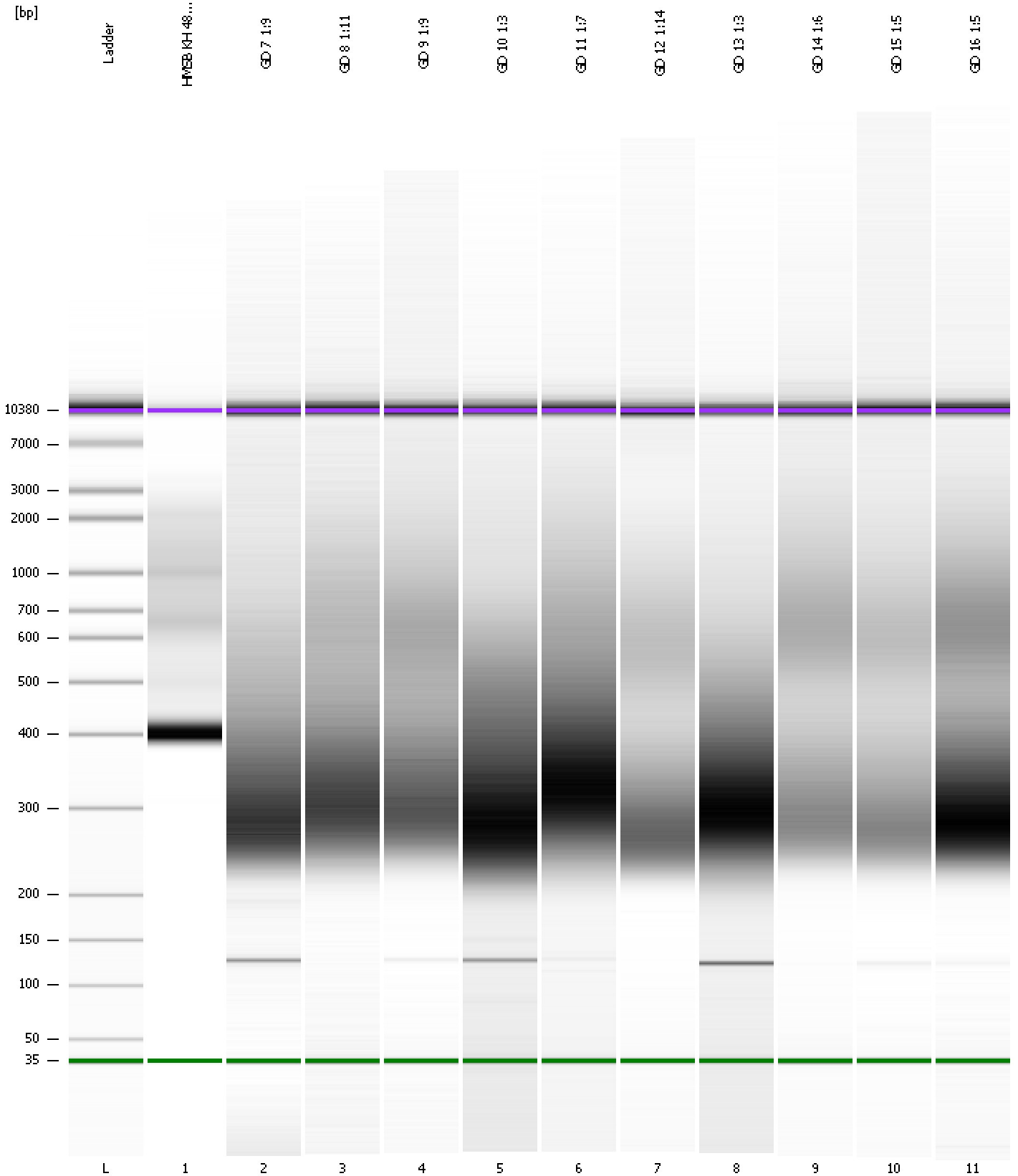
Region table for sample 11 : GD 16 1:5

From [bp]	To [bp]	Average Size [bp]	Molarity [pmol/l]	Conc. [pg/μl]	Corr. Area	% of Total	Size distribution in CV [%]	Color
200	477	322	8,917.1	1,808.83	1,110.1	68	19.0	Blue

Assay Class: High Sensitivity DNA Assay
Data Path: C:\...ents and Settings\Bioanalyzer\2013-08-12\2013-08-12_003.xad

Created: 8/12/2013 1:13:32 PM
Modified: 8/12/2013 1:56:14 PM

Gel Image



Assay Class: High Sensitivity DNA Assay
 Data Path: C:\...ents and Settings\Bioanalyzer\2013-08-12\2013-08-12_003.xad

Created: 8/12/2013 1:13:32 PM
 Modified: 8/12/2013 1:56:14 PM

Run Logbook

Description	Number	Source	Category	Sub Category	Time	Time Zone	User	Host
Run ended on port 1 (Number of wells acquired: 12)		Instrument	Run		8/12/2013 1:54:01 PM	(GMT --07:00) Pacific Standard Time	UC Davis	D8XSMGH1
Run started on port 1 (File: C:\Documents and Settings\Bioanalyzer\2013-08-12\2013-08-12_003.xad)		Instrument	Run		8/12/2013 1:13:38 PM	(GMT --07:00) Pacific Standard Time	UC Davis	D8XSMGH1
Product Number : G2938B		Instrument	Run		8/12/2013 1:13:38 PM	(GMT --07:00) Pacific Standard Time	UC Davis	D8XSMGH1
Name :		Instrument	Run		8/12/2013 1:13:38 PM	(GMT --07:00) Pacific Standard Time	UC Davis	D8XSMGH1
Vendor : Agilent Technologies		Instrument	Run		8/12/2013 1:13:38 PM	(GMT --07:00) Pacific Standard Time	UC Davis	D8XSMGH1
Serial# : DE13701086		Instrument	Run		8/12/2013 1:13:38 PM	(GMT --07:00) Pacific Standard Time	UC Davis	D8XSMGH1
Firmware : C.01.069		Instrument	Run		8/12/2013 1:13:38 PM	(GMT --07:00) Pacific Standard Time	UC Davis	D8XSMGH1
Cartridge : Electrode		Instrument	Run		8/12/2013 1:13:38 PM	(GMT --07:00) Pacific Standard Time	UC Davis	D8XSMGH1