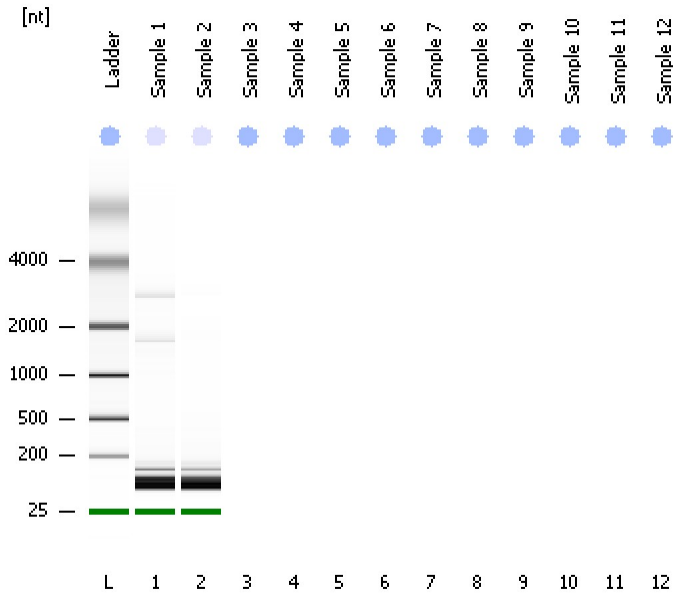


Assay Class: Eukaryote Total RNA Nano
Data Path: C:\...ents and Settings\Bioanalyzer\2013-08-13\2013-08-13_001.xad

Created: 8/13/2013 11:36:07 AM
Modified: 8/13/2013 11:49:56 AM

Electrophoresis File Run Summary



Instrument Information:

Instrument Name: DE13701086 Firmware: C.01.069
Serial#: DE13701086 Type: G2938B

Assay Information:

Assay Origin Path: C:\Program Files\Agilent\2100 bioanalyzer\2100 expert\assays\RNA\Eukaryote Total RNA Nano Series II.xsy

Assay Class: Eukaryote Total RNA Nano

Version: 2.6

Assay Comments: Total RNA Analysis ng sensitivity (Eukaryote)

© Copyright 2003 - 2009 Agilent Technologies, Inc.

Chip Information:

Chip Lot #:

Reagent Kit Lot #:

Chip Comments:



Assay Class: Eukaryote Total RNA Nano
Data Path: C:\...ents and Settings\Bioanalyzer\2013-08-13\2013-08-13_001.xad

Created: 8/13/2013 11:36:07 AM
Modified: 8/13/2013 11:49:56 AM

Electrophoresis File Run Summary (Chip Summary)

Sample Name	Sample Comment	Status	Result Label	Result Color
Sample 1		✓	RIN: 2.90	
Sample 2		✓	RIN: 2.50	
Sample 3				
Sample 4				
Sample 5				
Sample 6				
Sample 7				
Sample 8				
Sample 9				
Sample 10				
Sample 11				
Sample 12				
Ladder		✓	All Other Samples	

Chip Lot #

Reagent Kit Lot #

Chip Comments :

Assay Class: Eukaryote Total RNA Nano
Data Path: C:\...ents and Settings\Bioanalyzer\2013-08-13\2013-08-13_001.xad

Created: 8/13/2013 11:36:07 AM
Modified: 8/13/2013 11:49:56 AM

Electrophoresis Assay Details

General Analysis Settings

Number of Available Sample and Ladder Wells (Max.) : 13
Minimum Visible Range [s] : 17
Maximum Visible Range [s] : 70
Start Analysis Time Range [s] : 19
End Analysis Time Range [s] : 69
Ladder Concentration [ng/μl] : 150
Lower Marker Concentration [ng/μl] : 0
Upper Marker Concentration [ng/μl] : 0
Used Lower Marker for Quantitation
Standard Curve Fit is Logarithmic
Show Data Aligned to Lower Marker

Integrator Settings

Integration Start Time [s] : 19
Integration End Time [s] : 69
Slope Threshold : 0.6
Height Threshold [FU] : 0.5
Area Threshold : 0.2
Width Threshold [s] : 0.5
Baseline Plateau [s] : 6

Filter Settings

Filter Width [s] : 0.5
Polynomial Order : 4

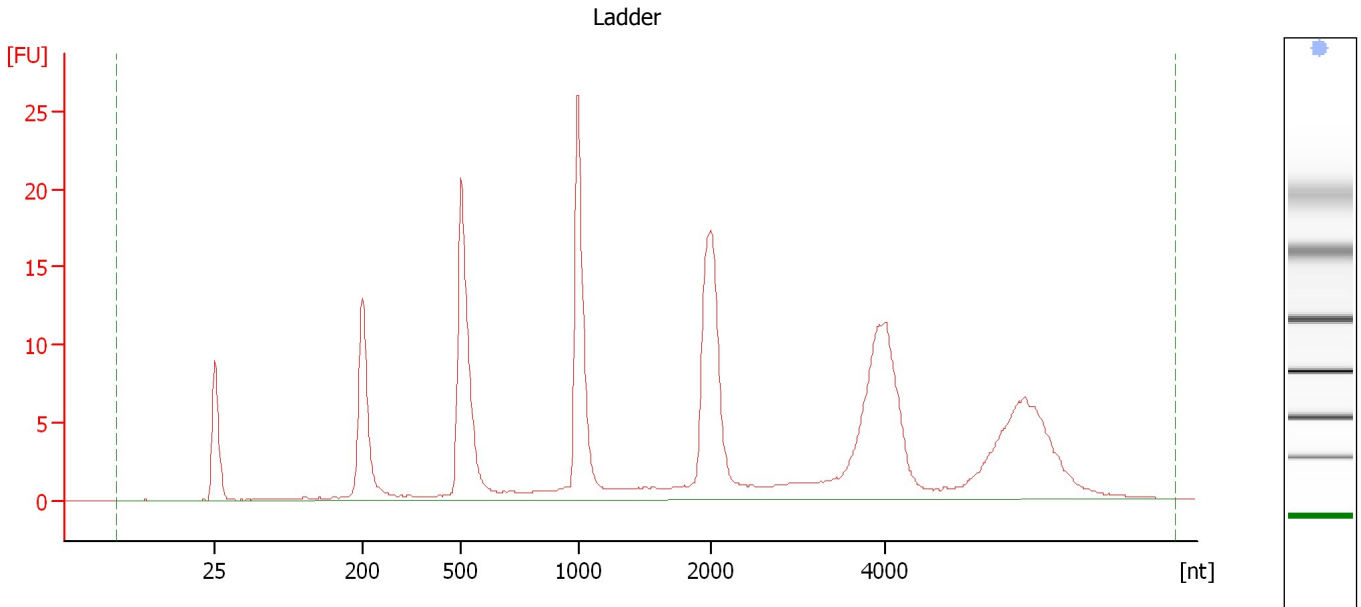
Ladder

Ladder Peak	Size
1	25
2	200
3	500
4	1000
5	2000
6	4000

Assay Class: Eukaryote Total RNA Nano
Data Path: C:\...ents and Settings\Bioanalyzer\2013-08-13\2013-08-13_001.xad

Created: 8/13/2013 11:36:07 AM
Modified: 8/13/2013 11:49:56 AM

Electropherogram Summary



Overall Results for Ladder

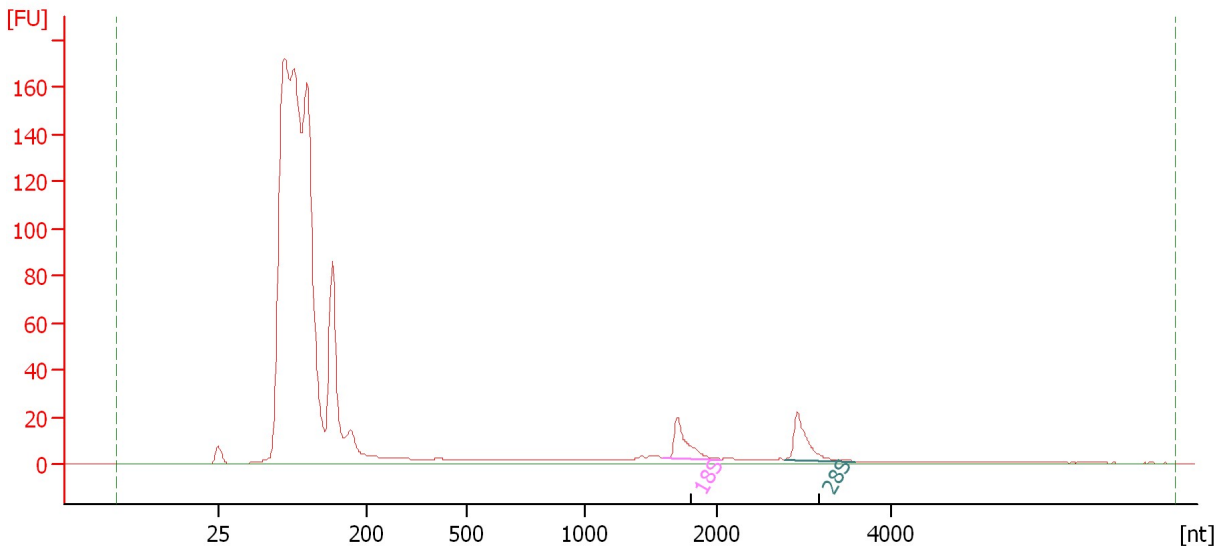
RNA Area:	214.0	Result Flagging Color:	
RNA Concentration:	150 ng/ μ l	Result Flagging Label:	All Other Samples

Assay Class: Eukaryote Total RNA Nano
Data Path: C:\...ents and Settings\Bioanalyzer\2013-08-13\2013-08-13_001.xad

Created: 8/13/2013 11:36:07 AM
Modified: 8/13/2013 11:49:56 AM

Electropherogram Summary Continued ...

Sample 1



Overall Results for sample 1 : Sample 1

RNA Area:	1,316.0	RNA Integrity Number (RIN):	2.9 (B.02.08, Anomaly Threshold(s) manually adapted)
RNA Concentration:	922 ng/μl	Result Flagging Color:	
rRNA Ratio [28s / 18s]:	1.1	Result Flagging Label:	RIN: 2.90

Fragment table for sample 1 : Sample 1

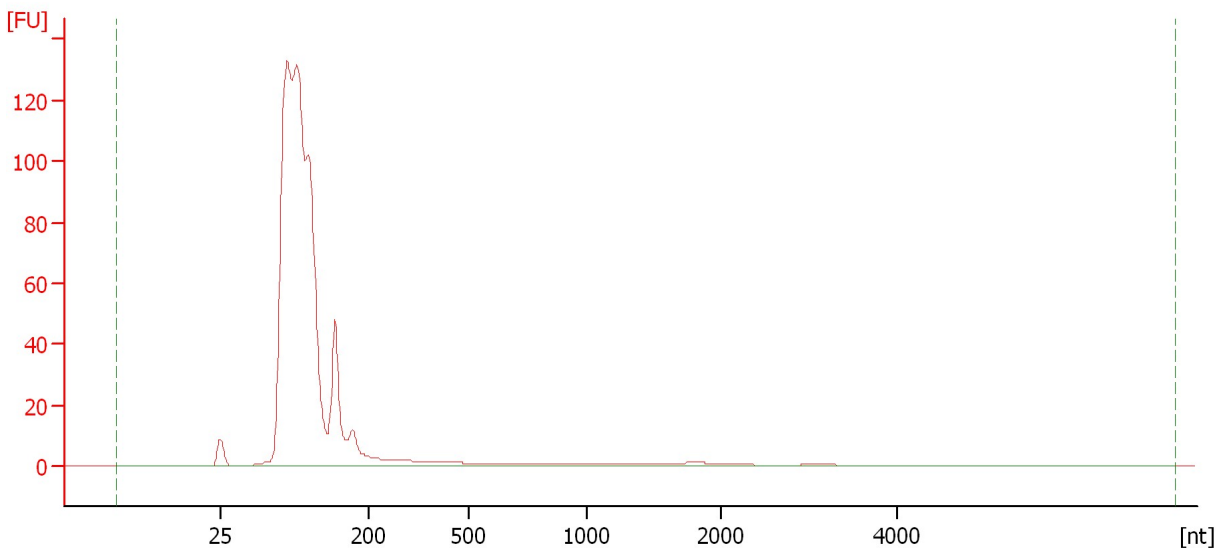
Name	Start Size [nt]	End Size [nt]	Area	% of total Area
18S	1,596	2,050	23.5	1.8
28S	2,781	3,574	26.5	2.0

Assay Class: Eukaryote Total RNA Nano
Data Path: C:\...ents and Settings\Bioanalyzer\2013-08-13\2013-08-13_001.xad

Created: 8/13/2013 11:36:07 AM
Modified: 8/13/2013 11:49:56 AM

Electropherogram Summary Continued ...

Sample 2



Overall Results for sample 2 : Sample 2

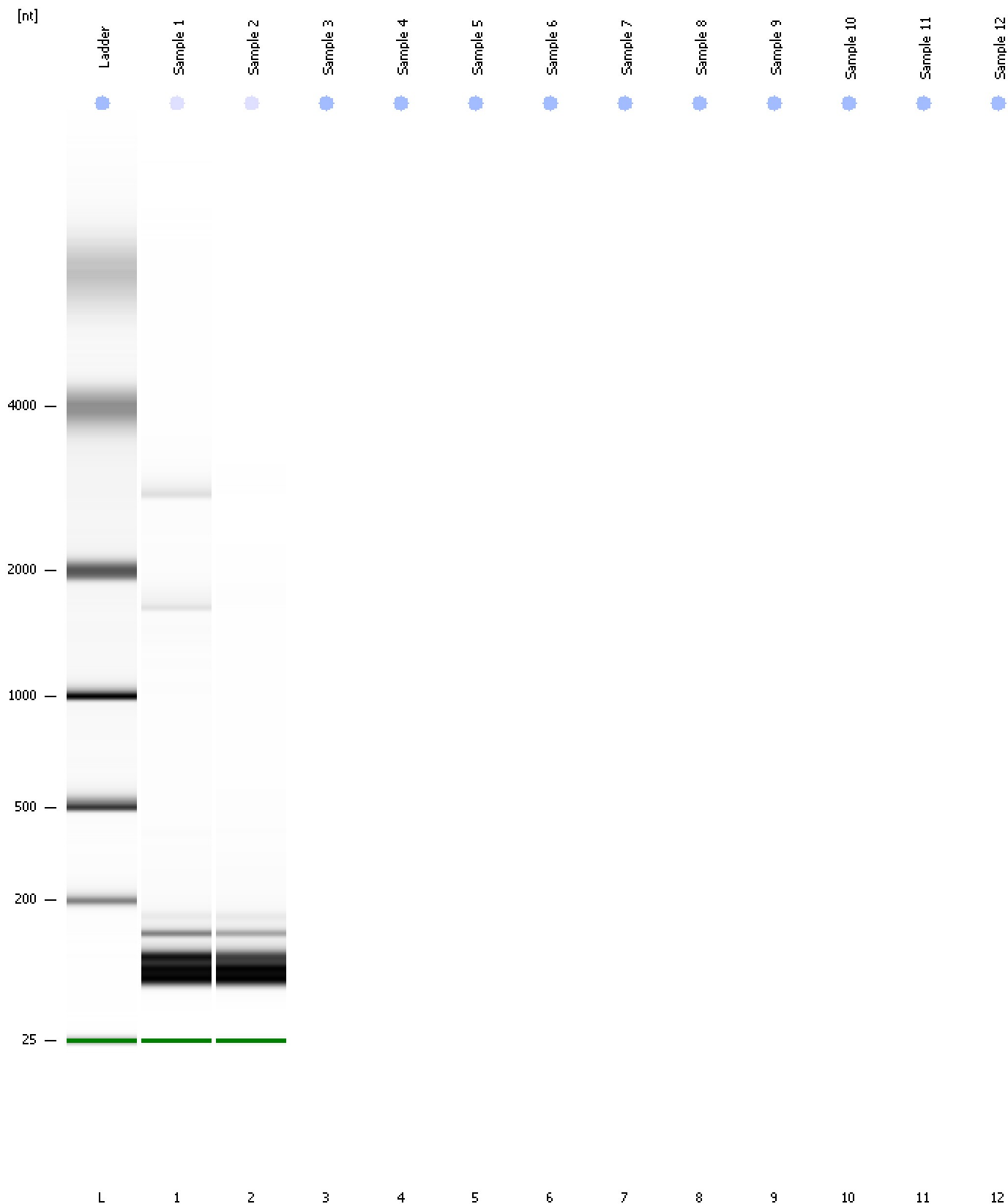
RNA Area: 891.8
RNA Concentration: 625 ng/μl
rRNA Ratio [28s / 18s]: 0.0

RNA Integrity Number (RIN): 2.5 (B.02.08, Anomaly Threshold(s) manually adapted)
Result Flagging Color:
Result Flagging Label: RIN: 2.50

Assay Class: Eukaryote Total RNA Nano
Data Path: C:\...ents and Settings\Bioanalyzer\2013-08-13\2013-08-13_001.xad

Created: 8/13/2013 11:36:07 AM
Modified: 8/13/2013 11:49:56 AM

Gel Image



Assay Class: Eukaryote Total RNA Nano
Data Path: C:\...ents and Settings\Bioanalyzer\2013-08-13\2013-08-13_001.xad

Created: 8/13/2013 11:36:07 AM
Modified: 8/13/2013 11:49:56 AM

Invalid Samples

- Sample 3 has not been run, no results available.
- Sample 4 has not been run, no results available.
- Sample 5 has not been run, no results available.
- Sample 6 has not been run, no results available.
- Sample 7 has not been run, no results available.
- Sample 8 has not been run, no results available.
- Sample 9 has not been run, no results available.
- Sample 10 has not been run, no results available.
- Sample 11 has not been run, no results available.
- Sample 12 has not been run, no results available.

Assay Class: Eukaryote Total RNA Nano
 Data Path: C:\...ents and Settings\Bioanalyzer\2013-08-13\2013-08-13_001.xad

Created: 8/13/2013 11:36:07 AM
 Modified: 8/13/2013 11:49:56 AM

Run Logbook

Description	Number	Source	Category	Sub Category	Time	Time Zone	User	Host
Run ended on port 1 (Number of wells acquired: 3)		Instrument	Run		8/13/2013 11:46:14 AM	(GMT --07:00) Pacific Standard Time	UC Davis	D8XSMGH1
Run started on port 1 (File: C:\Documents and Settings\Bioanalyzer\2013-08-13\2013-08-13_001.xad)		Instrument	Run		8/13/2013 11:36:12 AM	(GMT --07:00) Pacific Standard Time	UC Davis	D8XSMGH1
Product Number : G2938B		Instrument	Run		8/13/2013 11:36:12 AM	(GMT --07:00) Pacific Standard Time	UC Davis	D8XSMGH1
Name :		Instrument	Run		8/13/2013 11:36:12 AM	(GMT --07:00) Pacific Standard Time	UC Davis	D8XSMGH1
Vendor : Agilent Technologies		Instrument	Run		8/13/2013 11:36:12 AM	(GMT --07:00) Pacific Standard Time	UC Davis	D8XSMGH1
Serial# : DE13701086		Instrument	Run		8/13/2013 11:36:12 AM	(GMT --07:00) Pacific Standard Time	UC Davis	D8XSMGH1
Firmware : C.01.069		Instrument	Run		8/13/2013 11:36:12 AM	(GMT --07:00) Pacific Standard Time	UC Davis	D8XSMGH1
Cartridge : Electrode		Instrument	Run		8/13/2013 11:36:12 AM	(GMT --07:00) Pacific Standard Time	UC Davis	D8XSMGH1