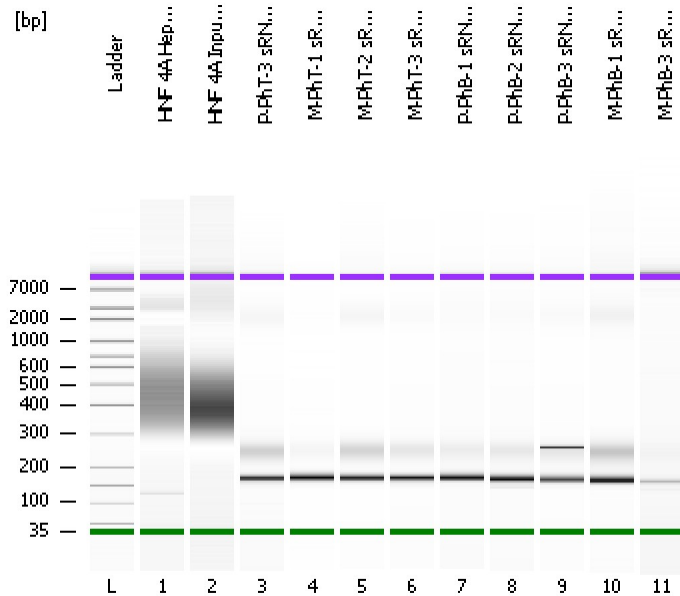


Assay Class: High Sensitivity DNA Assay
Data Path: C:\...ents and Settings\Bioanalyzer\2013-08-13\2013-08-13_003.xad

Created: 8/13/2013 4:25:39 PM
Modified: 8/13/2013 5:11:58 PM

Electrophoresis File Run Summary



Instrument Information:

Instrument Name: DE13701086 Firmware: C.01.069
Serial#: DE13701086 Type: G2938B

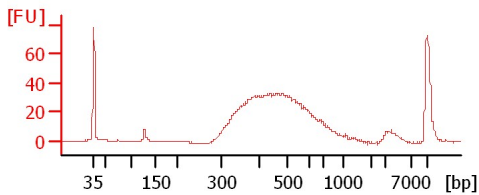
Assay Information:

Assay Origin Path: C:\Program Files\Agilent\2100 bioanalyzer\2100 expert\assays\dsDNA\High Sensitivity DNA.xsy
Assay Class: High Sensitivity DNA Assay
Version: 1.03
Assay Comments: Copyright © 2003-2010 Agilent Technologies

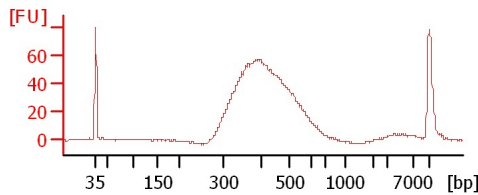
Chip Information:

Chip Lot #:
Reagent Kit Lot #:
Chip Comments:

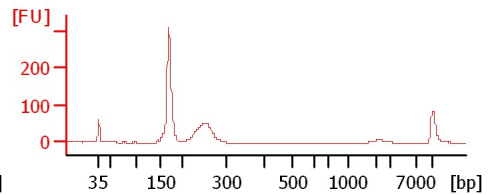
HNF 4A Hep G2 ChIP-Seq Lib 1:25



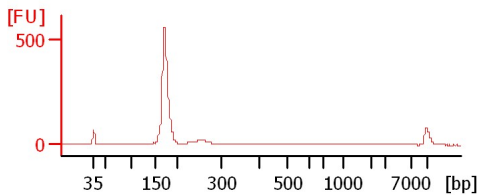
HNF 4A Input ChIP-Seq Lib 1:25



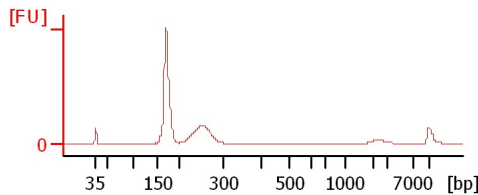
P-PhT-3 sRNA Lib



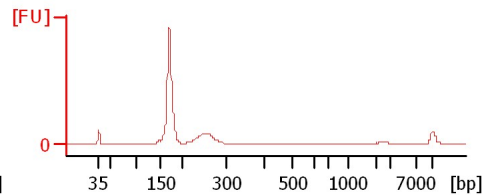
M-PhT-1 sRNA Lib 1:2



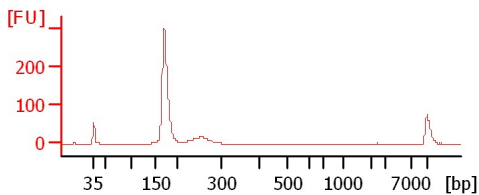
M-PhT-2 sRNA Lib



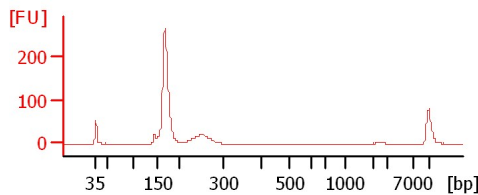
M-PhT-3 sRNA Lib



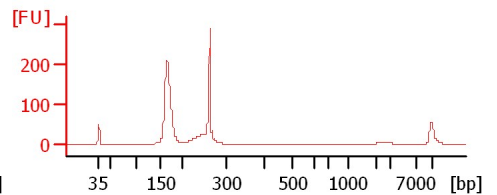
P-PhB-1 sRNA Lib 1:2



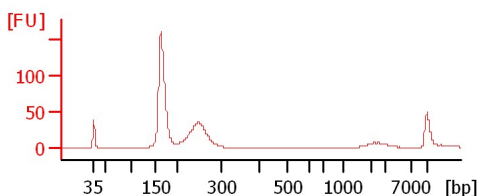
P-PhB-2 sRNA Lib 1:2



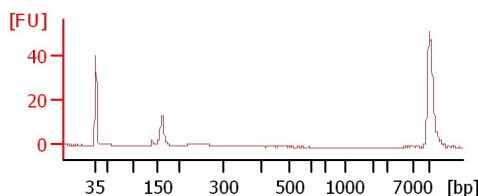
P-PhB-3 sRNA Lib 1:2



M-PhB-1 sRNA Lib 1:2



M-PhB-3 sRNA Lib 1:2



Assay Class: High Sensitivity DNA Assay
Data Path: C:\...ents and Settings\Bioanalyzer\2013-08-13\2013-08-13_003.xad

Created: 8/13/2013 4:25:39 PM
Modified: 8/13/2013 5:11:58 PM

Electrophoresis File Run Summary (Chip Summary)

Sample Name	Sample Comment	Rest. Digest	Status	Observation	Result Label	Result Color
HNF 4A Hep G2 ChIP-Seq Lib 1:25		<input type="checkbox"/>	✓			
HNF 4A Input ChIP-Seq Lib 1:25		<input type="checkbox"/>	✓			
P-PhT-3 sRNA Lib		<input type="checkbox"/>	✓			
M-PhT-1 sRNA Lib 1:2		<input type="checkbox"/>	✓			
M-PhT-2 sRNA Lib		<input type="checkbox"/>	✓			
M-PhT-3 sRNA Lib		<input type="checkbox"/>	✓			
P-PhB-1 sRNA Lib 1:2		<input type="checkbox"/>	✓			
P-PhB-2 sRNA Lib 1:2		<input type="checkbox"/>	✓			
P-PhB-3 sRNA Lib 1:2		<input type="checkbox"/>	✓			
M-PhB-1 sRNA Lib 1:2		<input type="checkbox"/>	✓			
M-PhB-3 sRNA Lib 1:2		<input type="checkbox"/>	✓			
Ladder		<input type="checkbox"/>	✓			

Chip Lot #

Reagent Kit Lot #

Chip Comments :

Assay Class: High Sensitivity DNA Assay
Data Path: C:\...ents and Settings\Bioanalyzer\2013-08-13\2013-08-13_003.xad

Created: 8/13/2013 4:25:39 PM
Modified: 8/13/2013 5:11:58 PM

Electrophoresis Assay Details

General Analysis Settings

Number of Available Sample and Ladder Wells (Max.) : 12
Minimum Visible Range [s] : 32
Maximum Visible Range [s] : 138
Start Analysis Time Range [s] : 33
End Analysis Time Range [s] : 137.5
Ladder Concentration [pg/μl] : 1950
Uses Standard Area for Ladder Fragments
Lower Marker Concentration [pg/μl] : 125
Upper Marker Concentration [pg/μl] : 75
Used Upper Marker for Quantitation
Standard Curve Fit is Point to Point
Show Data Aligned to Lower and Upper Marker

Integrator Settings

Integration Start Time [s] : 33.05
Integration End Time [s] : 137
Slope Threshold : 0.8
Height Threshold [FU] : 5
Area Threshold : 0.1
Width Threshold [s] : 0.6
Baseline Plateau [s] : 0.5

Filter Settings

Filter Width [s] : 0.5
Polynomial Order : 4

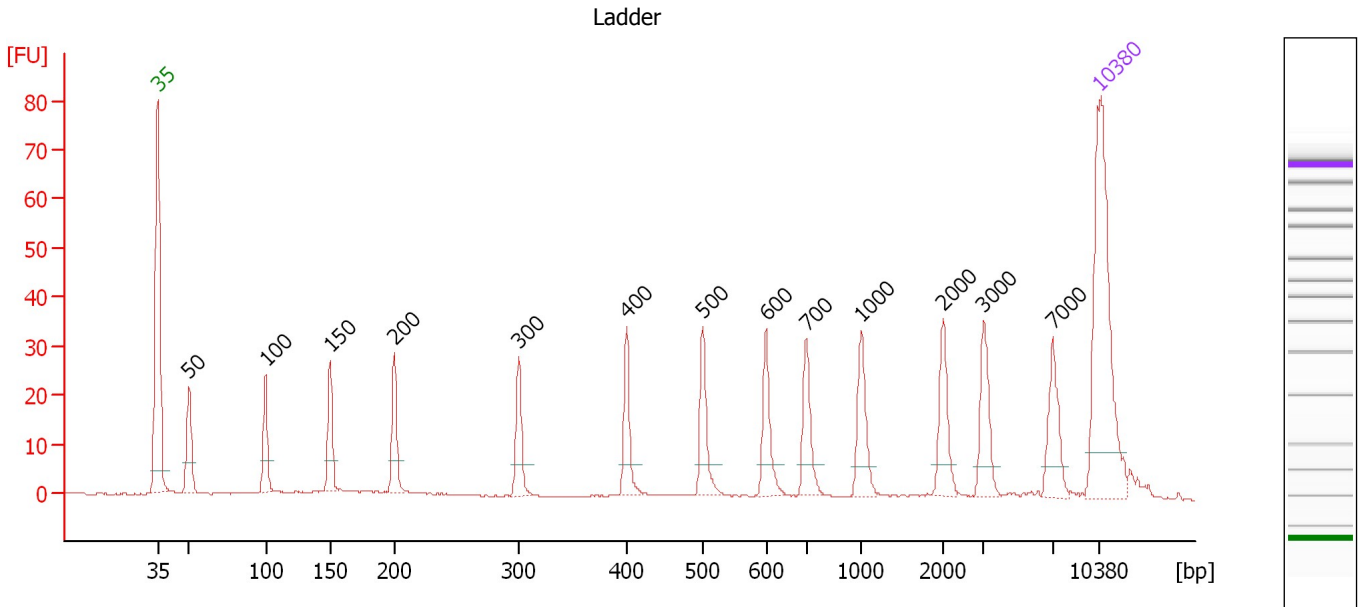
Ladder

Ladder Peak	Size	Area
1	35	160
2	50	210
3	100	208
4	150	221
5	200	242
6	300	270
7	400	305
8	500	306
9	600	336
10	700	321
11	1000	366
12	2000	413
13	3000	411
14	7000	400
15	10380	214

Assay Class: High Sensitivity DNA Assay
 Data Path: C:\...ents and Settings\Bioanalyzer\2013-08-13\2013-08-13_003.xad

Created: 8/13/2013 4:25:39 PM
 Modified: 8/13/2013 5:11:58 PM

Electropherogram Summary



Overall Results for Ladder

Noise: 0.1

Peak table for Ladder

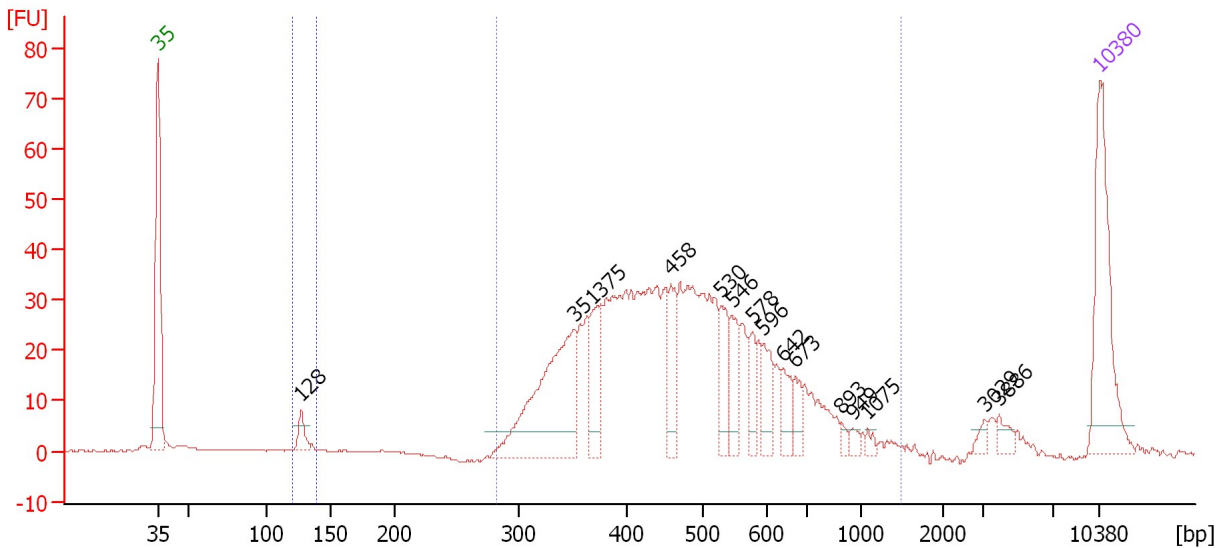
Peak	Size [bp]	Conc. [pg/μl]	Molarity [pmol/l]	Observations
1	35	125.00	5,411.3	Lower Marker
2	50	150.00	4,545.5	Ladder Peak
3	100	150.00	2,272.7	Ladder Peak
4	150	150.00	1,515.2	Ladder Peak
5	200	150.00	1,136.4	Ladder Peak
6	300	150.00	757.6	Ladder Peak
7	400	150.00	568.2	Ladder Peak
8	500	150.00	454.5	Ladder Peak
9	600	150.00	378.8	Ladder Peak
10	700	150.00	324.7	Ladder Peak
11	1,000	150.00	227.3	Ladder Peak
12	2,000	150.00	113.6	Ladder Peak
13	3,000	150.00	75.8	Ladder Peak
14	7,000	150.00	32.5	Ladder Peak
15	10,380	75.00	10.9	Upper Marker

Assay Class: High Sensitivity DNA Assay
 Data Path: C:\...ents and Settings\Bioanalyzer\2013-08-13\2013-08-13_003.xad

Created: 8/13/2013 4:25:39 PM
 Modified: 8/13/2013 5:11:58 PM

Electropherogram Summary Continued ...

HNF 4A Hep G2 ChIP-Seq Lib 1:25



Overall Results for sample 1 : HNF 4A Hep G2 ChIP-Seq Lib 1:25

Number of peaks found: 15 Corr. Area 1: 707.8
 Noise: 0.2 Corr. Area 2: 9.2

Peak table for sample 1 : HNF 4A Hep G2 ChIP-Seq Lib 1:25

Peak	Size [bp]	Conc. [pg/μl]	Molarity [pmol/l]	Observations
1	35	125.00	5,411.3	Lower Marker
2	128	14.57	172.8	
3	351	153.01	659.7	
4	375	42.59	171.9	
5	458	35.95	119.1	
6	530	29.01	83.0	
7	546	28.41	78.8	
8	578	20.46	53.6	
9	596	24.09	61.2	
10	642	18.93	44.6	
11	673	15.42	34.7	
12	893	4.38	7.4	
13	949	4.70	7.5	
14	1,075	3.79	5.3	
15	3,029	4.84	2.4	
16	3,886	7.18	2.8	
17	10,380	75.00	10.9	Upper Marker

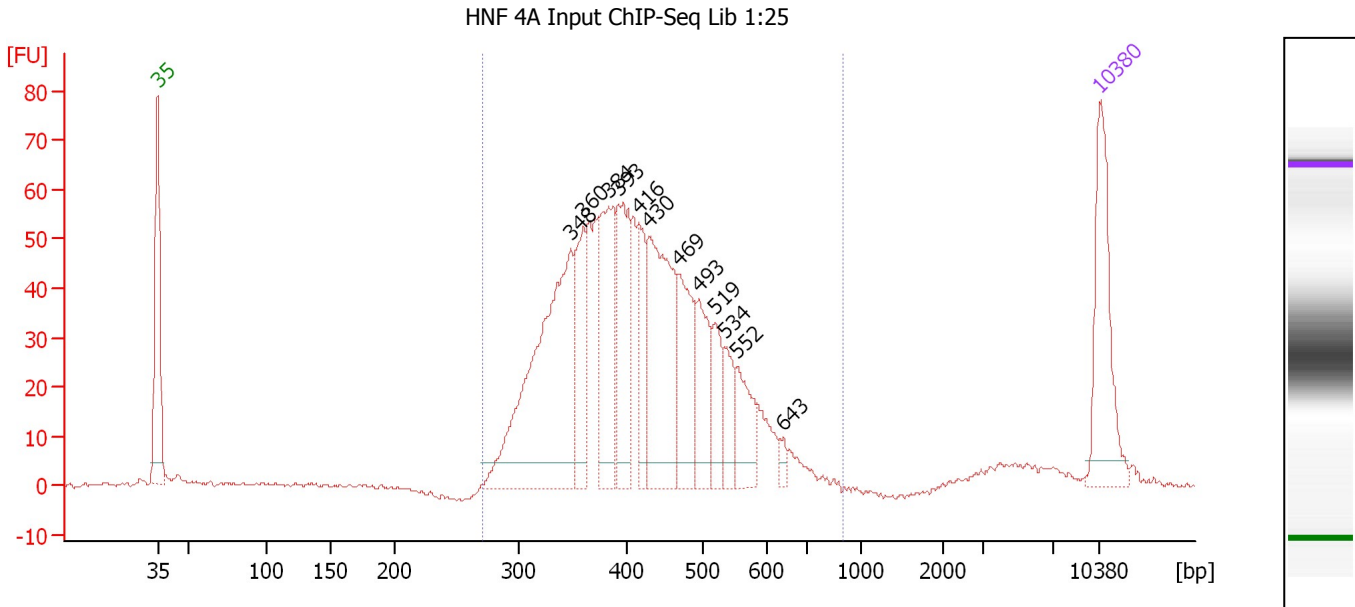
Region table for sample 1 : HNF 4A Hep G2 ChIP-Seq Lib 1:25

From [bp]	To [bp]	Average Size [bp]	Molarity [pmol/l]	Conc. [pg/μl]	Corr. Area	% of Total	Size distribution in CV [%]	Color
122	140	129	194.1	16.54	9.2	1	2.6	Blue
282	1,488	484	3,083.3	900.20	707.8	95	29.5	Dark Blue

Assay Class: High Sensitivity DNA Assay
 Data Path: C:\...ents and Settings\Bioanalyzer\2013-08-13\2013-08-13_003.xad

Created: 8/13/2013 4:25:39 PM
 Modified: 8/13/2013 5:11:58 PM

Electropherogram Summary Continued ...



Overall Results for sample 2 : HNF 4A Input ChIP-Seq Lib 1:25

Number of peaks found: 12 Corr. Area 1: 988.5
 Noise: 0.3

Peak table for sample 2 : HNF 4A Input ChIP-Seq Lib 1:25

Peak	Size [bp]	Conc. [pg/μl]	Molarity [pmol/l]	Observations
1	35	125.00	5,411.3	Lower Marker
2	348	281.16	1,223.0	
3	360	74.98	315.7	
4	384	109.95	434.3	
5	393	99.67	384.6	
6	416	50.48	183.8	
7	430	156.39	551.1	
8	469	78.27	253.1	
9	493	60.15	184.7	
10	519	38.55	112.5	
11	534	31.97	90.7	
12	552	43.03	118.0	
13	643	7.25	17.1	
14	10,380	75.00	10.9	Upper Marker

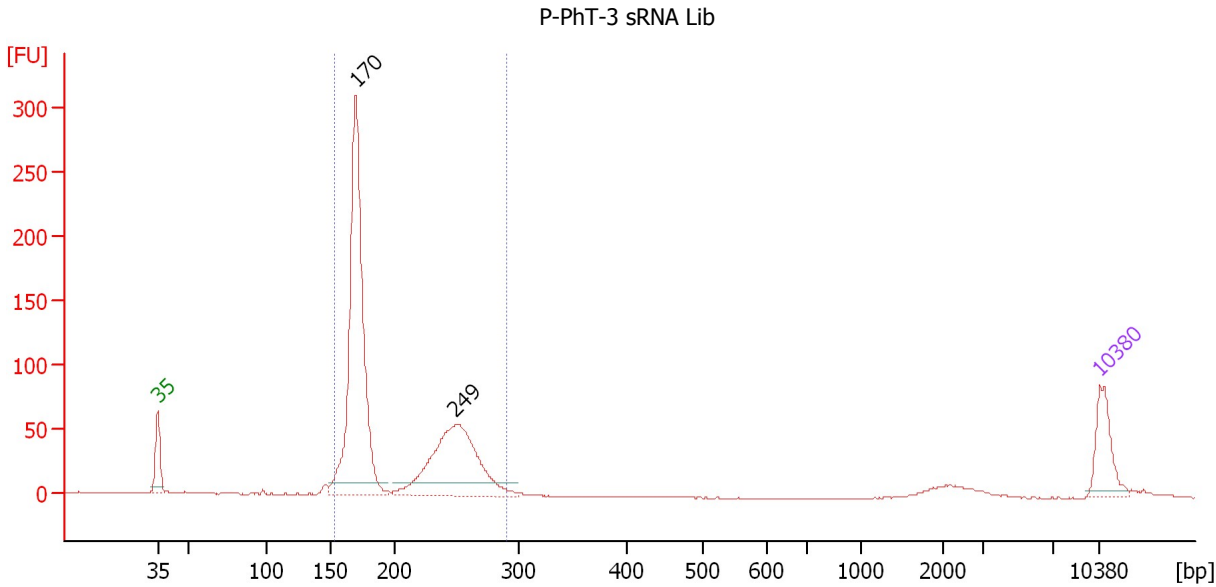
Region table for sample 2 : HNF 4A Input ChIP-Seq Lib 1:25

From [bp]	To [bp]	Average Size [bp]	Molarity [pmol/l]	Conc. [pg/μl]	Corr. Area	% of Total	Size distribution in CV [%]	Color
271	903	424	4,526.2	1,203.41	988.5	96	20.2	Blue

Assay Class: High Sensitivity DNA Assay
 Data Path: C:\...ents and Settings\Bioanalyzer\2013-08-13\2013-08-13_003.xad

Created: 8/13/2013 4:25:39 PM
 Modified: 8/13/2013 5:11:58 PM

Electropherogram Summary Continued ...



Setpoint Deviations for sample 3 : P-PhT-3 sRNA Lib

Height Threshold [FU] : 10

Overall Results for sample 3 : P-PhT-3 sRNA Lib

Number of peaks found: 2 Corr. Area 1: 941.3
 Noise: 0.3

Peak table for sample 3 : P-PhT-3 sRNA Lib

Peak	Size [bp]	Conc. [pg/μl]	Molarity [pmol/l]	Observations
1	35	125.00	5,411.3	Lower Marker
2	170	852.63	7,588.2	
3	249	437.91	2,663.0	
4	10,380	75.00	10.9	Upper Marker

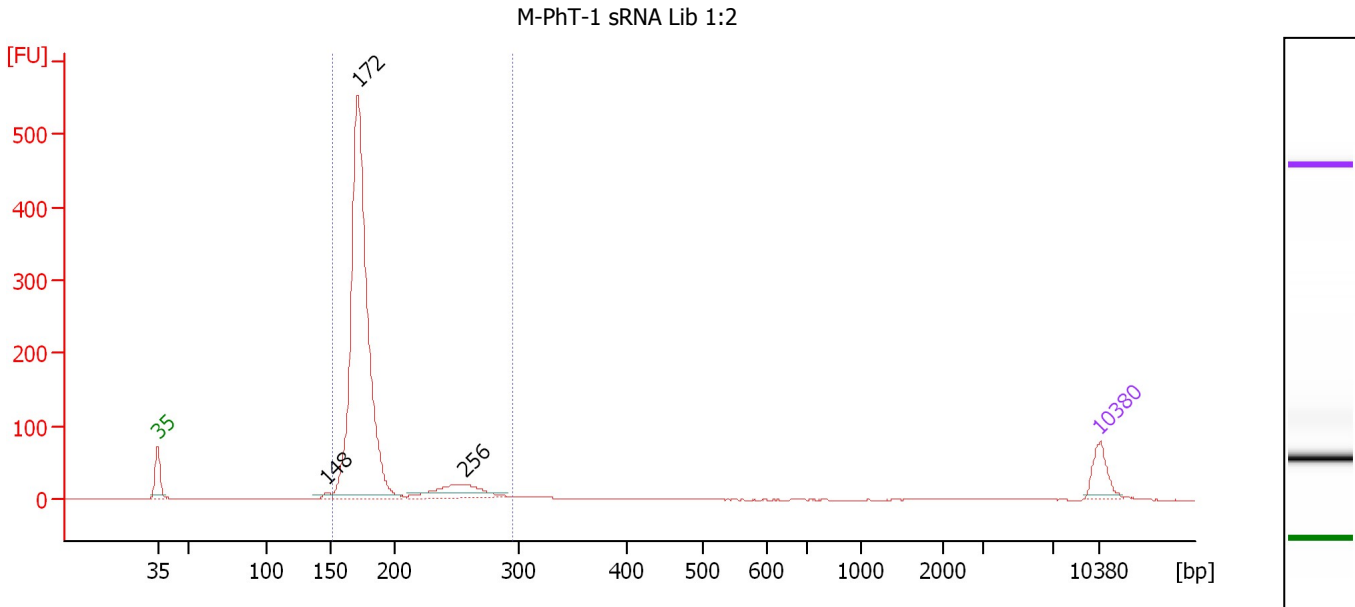
Region table for sample 3 : P-PhT-3 sRNA Lib

From [bp]	To [bp]	Average Size [bp]	Molarity [pmol/l]	Conc. [pg/μl]	Corr. Area	% of Total	Size distribution in CV [%]	Color
154	290	200	9,964.6	1,253.73	941.3	91	19.5	Blue

Assay Class: High Sensitivity DNA Assay
 Data Path: C:\...ents and Settings\Bioanalyzer\2013-08-13\2013-08-13_003.xad

Created: 8/13/2013 4:25:39 PM
 Modified: 8/13/2013 5:11:58 PM

Electropherogram Summary Continued ...



Overall Results for sample 4 : M-PhT-1 sRNA Lib 1:2

Number of peaks found: 3 Corr. Area 1: 1,530.6
 Noise: 0.1

Peak table for sample 4 : M-PhT-1 sRNA Lib 1:2

Peak	Size [bp]	Conc. [pg/μl]	Molarity [pmol/l]	Observations
1	35	125.00	5,411.3	Lower Marker
2	148	15.89	162.9	
3	172	2,123.63	18,752.8	
4	256	158.64	937.5	
5	10,380	75.00	10.9	Upper Marker

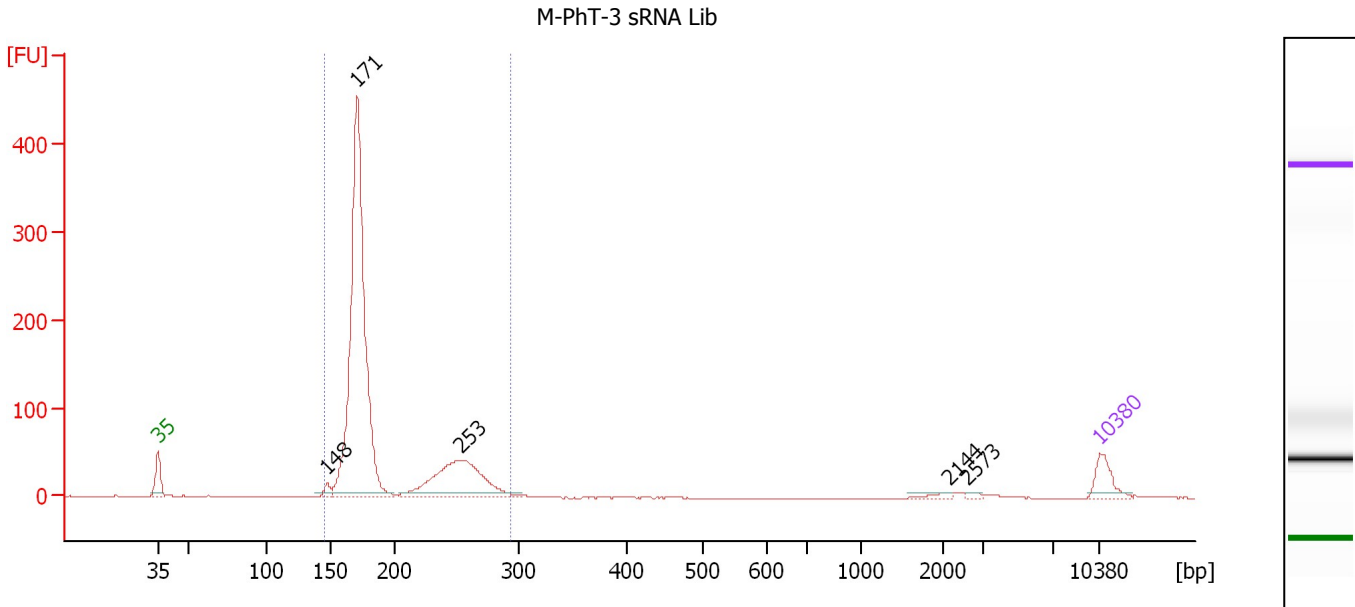
Region table for sample 4 : M-PhT-1 sRNA Lib 1:2

From [bp]	To [bp]	Average Size [bp]	Molarity [pmol/l]	Conc. [pg/μl]	Corr. Area	% of Total	Size distribution in CV [%]	Color
152	295	182	19,808.7	2,334.14	1,530.6	95	14.2	Blue

Assay Class: High Sensitivity DNA Assay
 Data Path: C:\...ents and Settings\Bioanalyzer\2013-08-13\2013-08-13_003.xad

Created: 8/13/2013 4:25:39 PM
 Modified: 8/13/2013 5:11:58 PM

Electropherogram Summary Continued ...



Overall Results for sample 6 : M-PhT-3 sRNA Lib

Number of peaks found: 5 Corr. Area 1: 1,235.4
 Noise: 0.1

Peak table for sample 6 : M-PhT-3 sRNA Lib

Peak	Size [bp]	Conc. [pg/μl]	Molarity [pmol/l]	Observations
1	35	125.00	5,411.3	Lower Marker
2	148	36.49	373.3	
3	171	2,144.09	18,981.1	
4	253	571.88	3,419.6	
5	2,144	13.53	9.6	
6	2,573	9.35	5.5	
7	10,380	75.00	10.9	Upper Marker

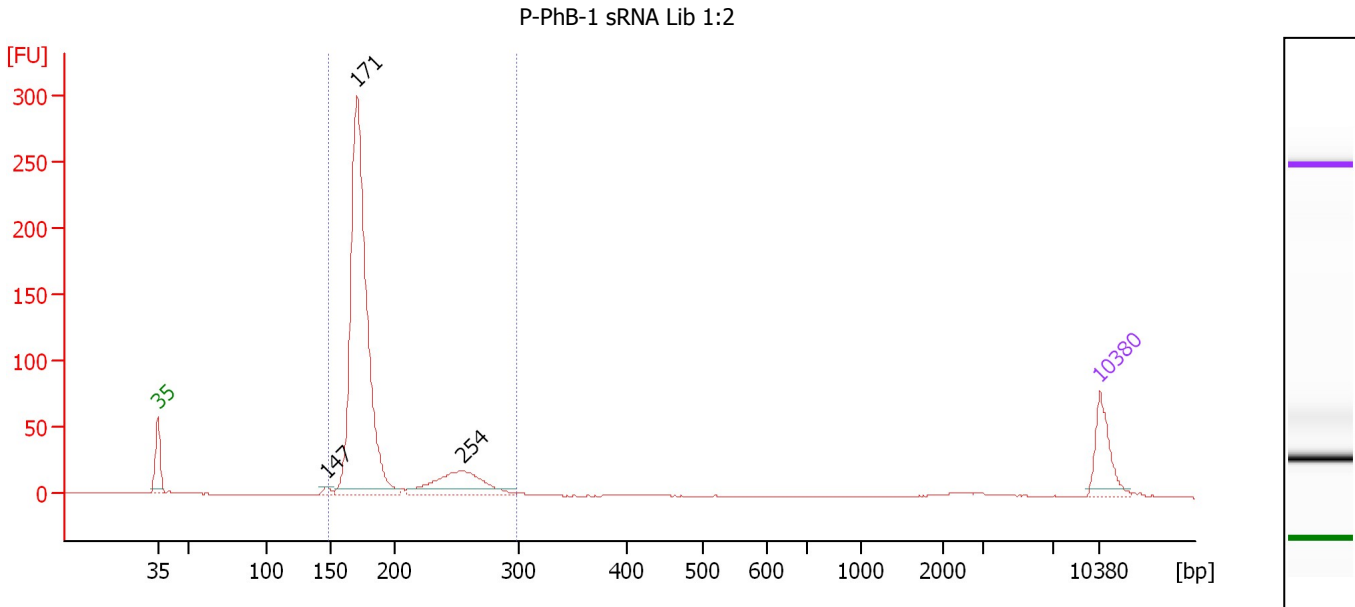
Region table for sample 6 : M-PhT-3 sRNA Lib

From [bp]	To [bp]	Average Size [bp]	Molarity [pmol/l]	Conc. [pg/μl]	Corr. Area	% of Total	Size distribution in CV [%]	Color
146	294	191	22,661.7	2,745.86	1,235.4	93	18.8	Blue

Assay Class: High Sensitivity DNA Assay
 Data Path: C:\...ents and Settings\Bioanalyzer\2013-08-13\2013-08-13_003.xad

Created: 8/13/2013 4:25:39 PM
 Modified: 8/13/2013 5:11:58 PM

Electropherogram Summary Continued ...



Overall Results for sample 7 : P-PhB-1 sRNA Lib 1:2

Number of peaks found: 3 Corr. Area 1: 838.6
 Noise: 0.1

Peak table for sample 7 : P-PhB-1 sRNA Lib 1:2

Peak	Size [bp]	Conc. [pg/μl]	Molarity [pmol/l]	Observations
1	35	125.00	5,411.3	Lower Marker
2	147	11.19	115.0	
3	171	1,156.29	10,245.6	
4	254	179.12	1,067.0	
5	10,380	75.00	10.9	Upper Marker

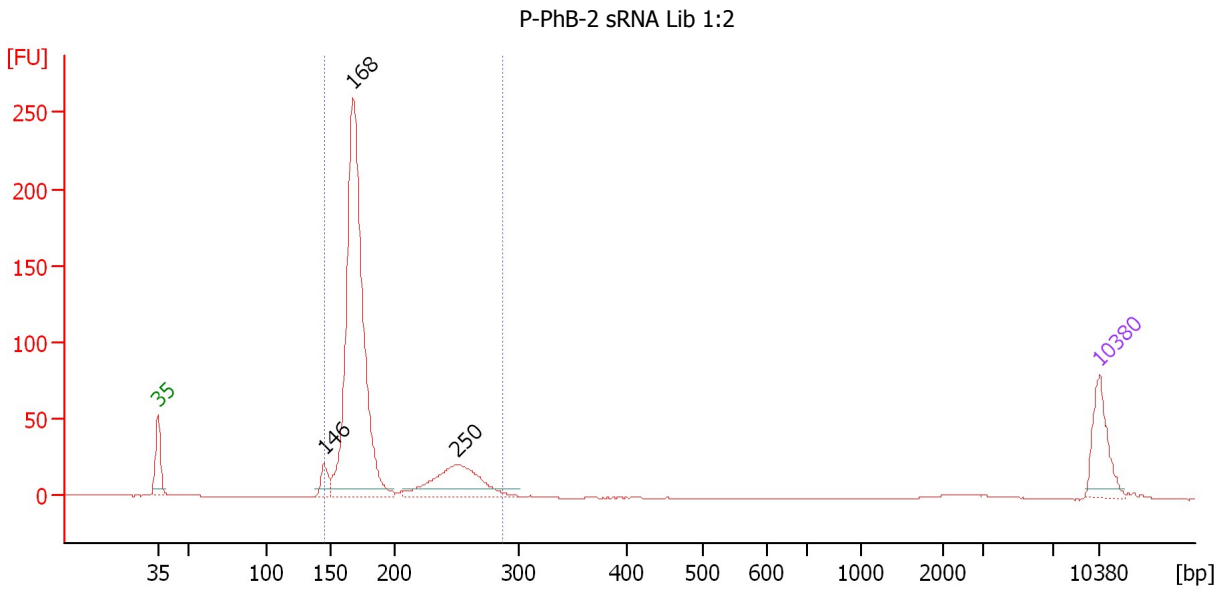
Region table for sample 7 : P-PhB-1 sRNA Lib 1:2

From [bp]	To [bp]	Average Size [bp]	Molarity [pmol/l]	Conc. [pg/μl]	Corr. Area	% of Total	Size distribution in CV [%]	Color
150	298	187	11,216.4	1,343.06	838.6	91	16.5	Blue

Assay Class: High Sensitivity DNA Assay
 Data Path: C:\...ents and Settings\Bioanalyzer\2013-08-13\2013-08-13_003.xad

Created: 8/13/2013 4:25:39 PM
 Modified: 8/13/2013 5:11:58 PM

Electropherogram Summary Continued ...



Overall Results for sample 8 : P-PhB-2 sRNA Lib 1:2

Number of peaks found: 3 Corr. Area 1: 773.1
 Noise: 0.1

Peak table for sample 8 : P-PhB-2 sRNA Lib 1:2

Peak	Size [bp]	Conc. [pg/μl]	Molarity [pmol/l]	Observations
1	35	125.00	5,411.3	Lower Marker
2	146	40.86	425.2	
3	168	984.49	8,861.7	
4	250	179.19	1,087.6	
5	10,380	75.00	10.9	Upper Marker

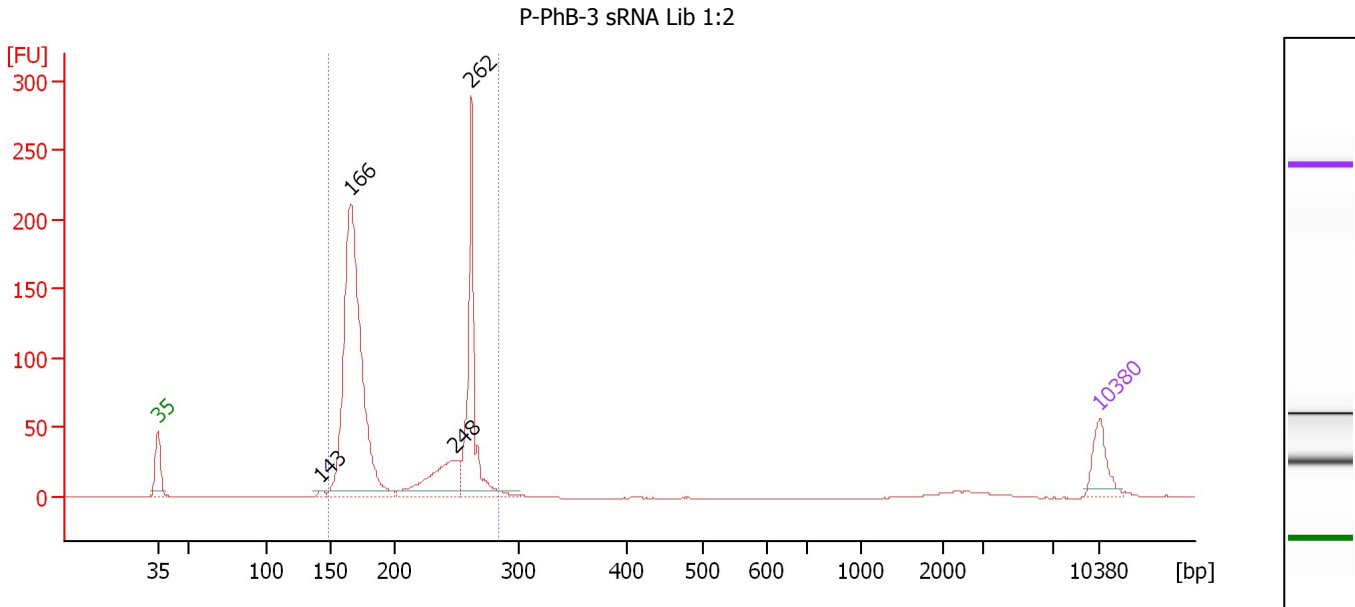
Region table for sample 8 : P-PhB-2 sRNA Lib 1:2

From [bp]	To [bp]	Average Size [bp]	Molarity [pmol/l]	Conc. [pg/μl]	Corr. Area	% of Total	Size distribution in CV [%]	Color
147	287	185	10,159.1	1,198.13	773.1	92	17.7	Blue

Assay Class: High Sensitivity DNA Assay
 Data Path: C:\...ents and Settings\Bioanalyzer\2013-08-13\2013-08-13_003.xad

Created: 8/13/2013 4:25:39 PM
 Modified: 8/13/2013 5:11:58 PM

Electropherogram Summary Continued ...



Overall Results for sample 9 : P-PhB-3 sRNA Lib 1:2

Number of peaks found: 4 Corr. Area 1: 868.9
 Noise: 0.1

Peak table for sample 9 : P-PhB-3 sRNA Lib 1:2

Peak	Size [bp]	Conc. [pg/μl]	Molarity [pmol/l]	Observations
1	35	125.00	5,411.3	Lower Marker
2	143	14.01	148.0	
3	166	1,267.55	11,543.7	
4	248	223.11	1,361.2	
5	262	442.15	2,559.1	
6	10,380	75.00	10.9	Upper Marker

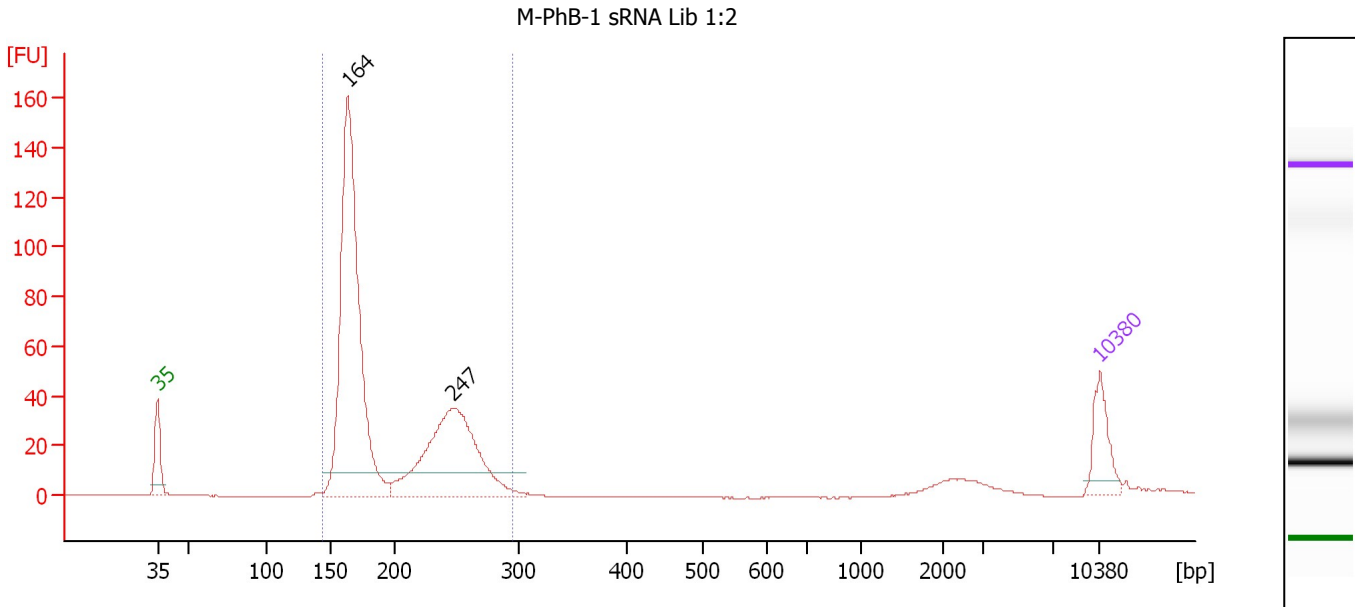
Region table for sample 9 : P-PhB-3 sRNA Lib 1:2

From [bp]	To [bp]	Average Size [bp]	Molarity [pmol/l]	Conc. [pg/μl]	Corr. Area	% of Total	Size distribution in CV [%]	Color
149	284	203	15,344.7	1,934.65	868.9	90	21.2	Blue

Assay Class: High Sensitivity DNA Assay
 Data Path: C:\...ents and Settings\Bioanalyzer\2013-08-13\2013-08-13_003.xad

Created: 8/13/2013 4:25:39 PM
 Modified: 8/13/2013 5:11:58 PM

Electropherogram Summary Continued ...



Setpoint Deviations for sample 10 : M-PhB-1 sRNA Lib 1:2

Height Threshold [FU] : 10

Overall Results for sample 10 : M-PhB-1 sRNA Lib 1:2

Number of peaks found: 2 Corr. Area 1: 659.9
 Noise: 0.1

Peak table for sample 10 : M-PhB-1 sRNA Lib 1:2

Peak	Size [bp]	Conc. [pg/µl]	Molarity [pmol/l]	Observations
1	35	125.00	5,411.3	Lower Marker
2	164	1,131.05	10,446.8	
3	247	564.96	3,459.8	
4	10,380	75.00	10.9	Upper Marker

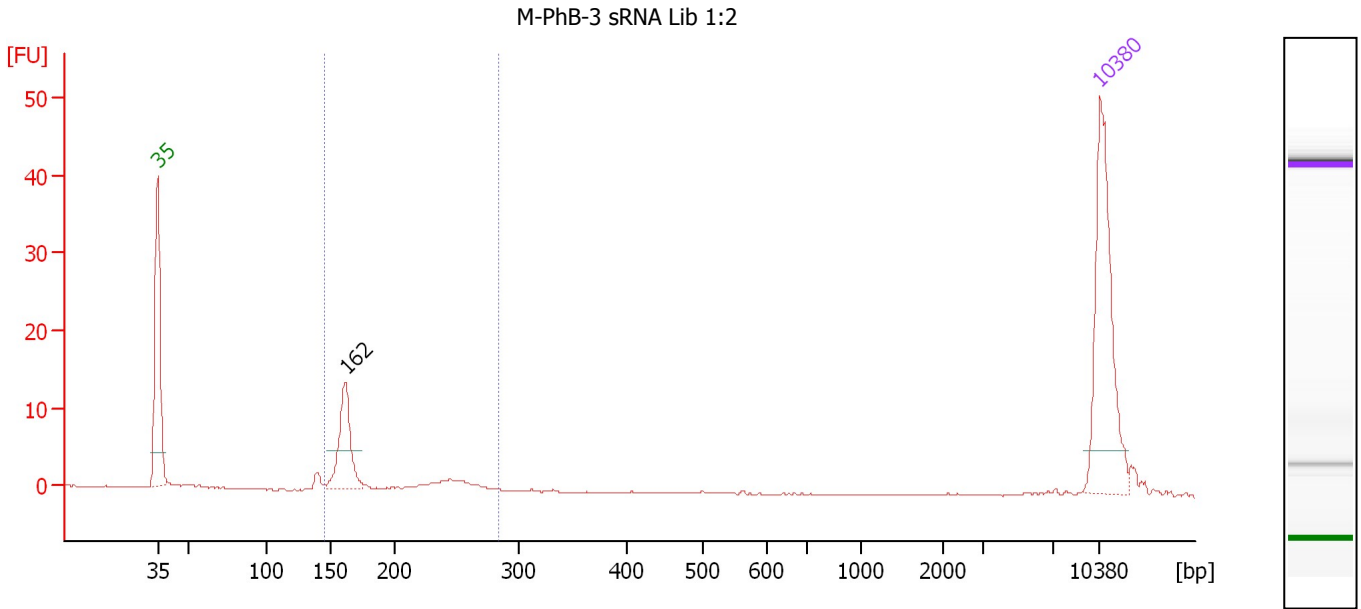
Region table for sample 10 : M-PhB-1 sRNA Lib 1:2

From [bp]	To [bp]	Average Size [bp]	Molarity [pmol/l]	Conc. [pg/µl]	Corr. Area	% of Total	Size distribution in CV [%]	Color
144	295	197	13,648.3	1,683.19	659.9	86	20.6	Blue

Assay Class: High Sensitivity DNA Assay
 Data Path: C:\...ents and Settings\Bioanalyzer\2013-08-13\2013-08-13_003.xad

Created: 8/13/2013 4:25:39 PM
 Modified: 8/13/2013 5:11:58 PM

Electropherogram Summary Continued ...



Overall Results for sample 11 : M-PhB-3 sRNA Lib 1:2

Number of peaks found: 1 Corr. Area 1: 30.3
 Noise: 0.1

Peak table for sample 11 : M-PhB-3 sRNA Lib 1:2

Peak	Size [bp]	Conc. [pg/μl]	Molarity [pmol/l]	Observations
1	35	125.00	5,411.3	Lower Marker
2	162	53.67	501.2	
3	10,380	75.00	10.9	Upper Marker

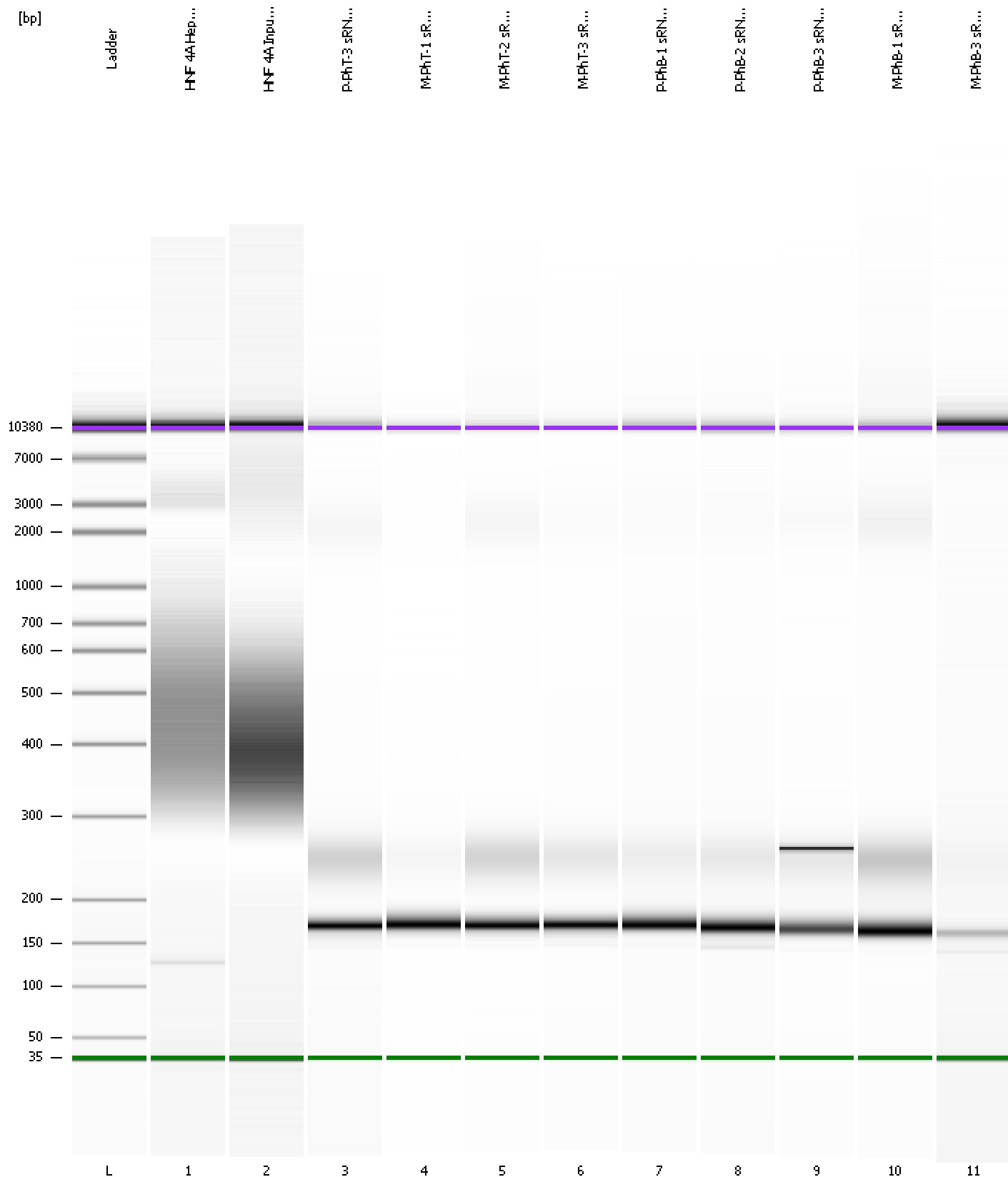
Region table for sample 11 : M-PhB-3 sRNA Lib 1:2

From [bp]	To [bp]	Average Size [bp]	Molarity [pmol/l]	Conc. [pg/μl]	Corr. Area	% of Total	Size distribution in CV [%]	Color
146	284	183	612.9	70.64	30.3	76	20.2	Blue

Assay Class: High Sensitivity DNA Assay
Data Path: C:\...ents and Settings\Bioanalyzer\2013-08-13\2013-08-13_003.xad

Created: 8/13/2013 4:25:39 PM
Modified: 8/13/2013 5:11:58 PM

Gel Image



Assay Class: High Sensitivity DNA Assay
 Data Path: C:\...ents and Settings\Bioanalyzer\2013-08-13\2013-08-13_003.xad

Created: 8/13/2013 4:25:39 PM
 Modified: 8/13/2013 5:11:58 PM

Run Logbook

Description	Number	Source	Category	Sub Category	Time	Time Zone	User	Host
Run ended on port 1 (Number of wells acquired: 12)		Instrument	Run		8/13/2013 5:06:58 PM	(GMT --07:00) Pacific Standard Time	UC Davis	D8XSMGH1
Run started on port 1 (File: C:\Documents and Settings\Bioanalyzer\2013-08-13\2013-08-13_003.xad)		Instrument	Run		8/13/2013 4:25:45 PM	(GMT --07:00) Pacific Standard Time	UC Davis	D8XSMGH1
Product Number : G2938B		Instrument	Run		8/13/2013 4:25:45 PM	(GMT --07:00) Pacific Standard Time	UC Davis	D8XSMGH1
Name :		Instrument	Run		8/13/2013 4:25:45 PM	(GMT --07:00) Pacific Standard Time	UC Davis	D8XSMGH1
Vendor : Agilent Technologies		Instrument	Run		8/13/2013 4:25:45 PM	(GMT --07:00) Pacific Standard Time	UC Davis	D8XSMGH1
Serial# : DE13701086		Instrument	Run		8/13/2013 4:25:45 PM	(GMT --07:00) Pacific Standard Time	UC Davis	D8XSMGH1
Firmware : C.01.069		Instrument	Run		8/13/2013 4:25:45 PM	(GMT --07:00) Pacific Standard Time	UC Davis	D8XSMGH1
Cartridge : Electrode		Instrument	Run		8/13/2013 4:25:45 PM	(GMT --07:00) Pacific Standard Time	UC Davis	D8XSMGH1