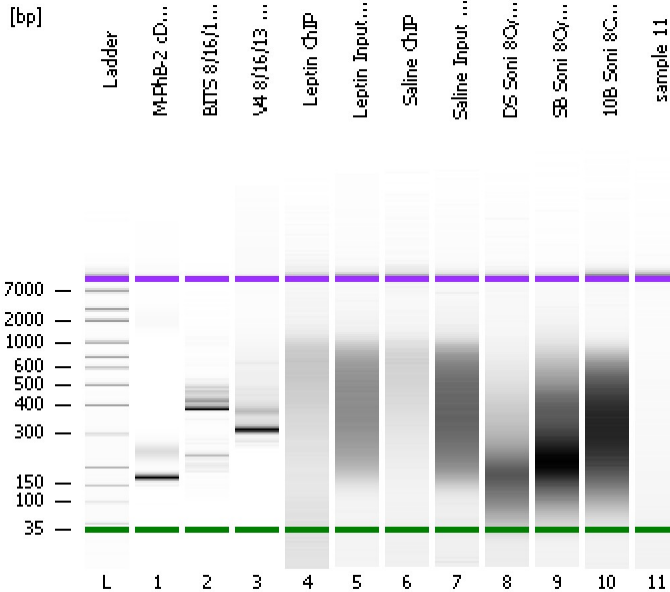


Assay Class: High Sensitivity DNA Assay  
 Data Path: C:\...ents and Settings\Bioanalyzer\2013-08-19\2013-08-19\_003.xad

Created: 8/19/2013 5:12:45 PM  
 Modified: 8/19/2013 6:07:43 PM

**Electrophoresis File Run Summary**



Instrument Information:

Instrument Name: DE13701086      Firmware: C.01.069  
 Serial#: DE13701086      Type: G2938B

Assay Information:

Assay Origin Path: C:\Program Files\Agilent\2100 bioanalyzer\2100 expert\assays\dsDNA\High Sensitivity DNA.xsy  
 Assay Class: High Sensitivity DNA Assay  
 Version: 1.03  
 Assay Comments: Copyright © 2003-2010 Agilent Technologies

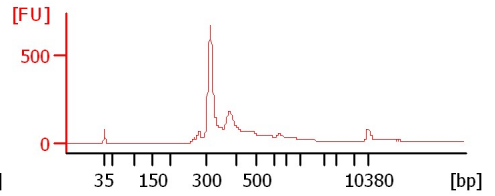
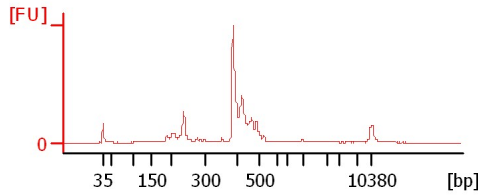
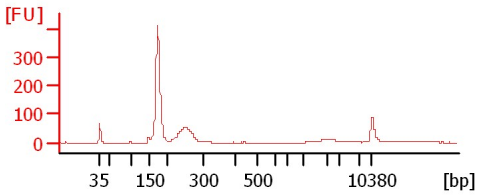
Chip Information:

Chip Lot #:      Reagent Kit Lot #:      Chip Comments:

**M-PhB-2 cDNA Lib 1:2**

**BITS 8/16/13 MILLS 1:40**

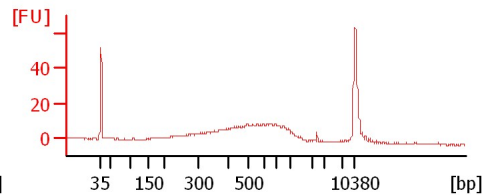
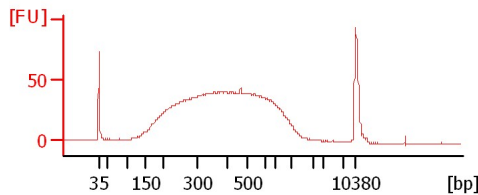
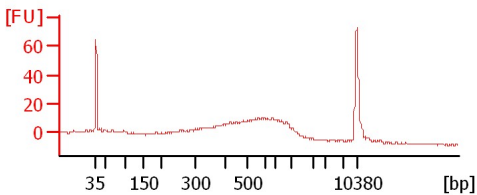
**V4 8/16/13 MILLS 1:40**



**Leptin ChIP**

**Leptin Input 1:2**

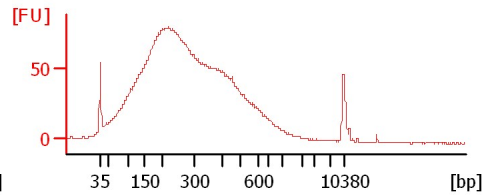
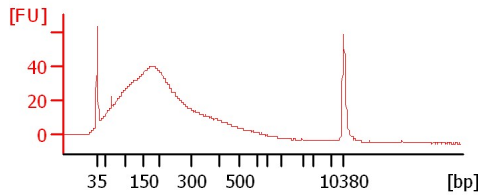
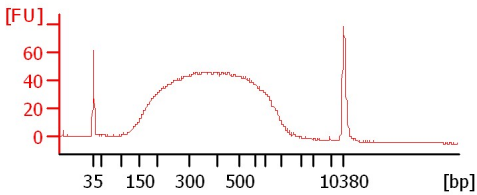
**Saline ChIP**



**Saline Input 1:2**

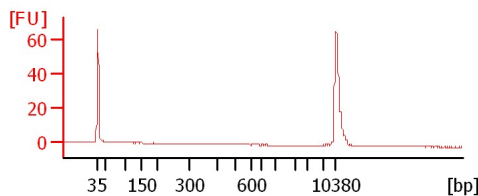
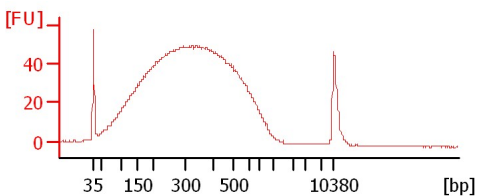
**DS Soni 8Cycles**

**SB Soni 8Cycles 1:2**



**10B Soni 8Cycles**

**sample 11**



Assay Class: High Sensitivity DNA Assay  
 Data Path: C:\...ents and Settings\Bioanalyzer\2013-08-19\2013-08-19\_003.xad

Created: 8/19/2013 5:12:45 PM  
 Modified: 8/19/2013 6:07:43 PM

**Electrophoresis File Run Summary (Chip Summary)**

Sample Name	Sample Comment	Rest. Digest	Status	Observation	Result Label	Result Color
M-PhB-2 cDNA Lib 1:2		<input type="checkbox"/>	✓			
BITS 8/16/13 MILLS 1:40		<input type="checkbox"/>	✓			
V4 8/16/13 MILLS 1:40		<input type="checkbox"/>	✓			
Leptin ChIP		<input type="checkbox"/>	✓			
Leptin Input 1:2		<input type="checkbox"/>	✓			
Saline ChIP		<input type="checkbox"/>	✓			
Saline Input 1:2		<input type="checkbox"/>	✓			
DS Soni 8Cycles		<input type="checkbox"/>	✓			
SB Soni 8Cycles 1:2		<input type="checkbox"/>	✓			
10B Soni 8Cycles		<input type="checkbox"/>	✓			
sample 11		<input type="checkbox"/>	✓			
Ladder		<input type="checkbox"/>	✓			

**Chip Lot #**

**Reagent Kit Lot #**

**Chip Comments :**

Assay Class: High Sensitivity DNA Assay  
Data Path: C:\...ents and Settings\Bioanalyzer\2013-08-19\2013-08-19\_003.xad

Created: 8/19/2013 5:12:45 PM  
Modified: 8/19/2013 6:07:43 PM

**Electrophoresis Assay Details**

**General Analysis Settings**

Number of Available Sample and Ladder Wells (Max.) : 12  
Minimum Visible Range [s] : 32  
Maximum Visible Range [s] : 138  
Start Analysis Time Range [s] : 33  
End Analysis Time Range [s] : 137.5  
Ladder Concentration [pg/μl] : 1950  
Uses Standard Area for Ladder Fragments  
Lower Marker Concentration [pg/μl] : 125  
Upper Marker Concentration [pg/μl] : 75  
Used Upper Marker for Quantitation  
Standard Curve Fit is Point to Point  
Show Data Aligned to Lower and Upper Marker

**Integrator Settings**

Integration Start Time [s] : 33.05  
Integration End Time [s] : 137  
Slope Threshold : 0.8  
Height Threshold [FU] : 5  
Area Threshold : 0.1  
Width Threshold [s] : 0.6  
Baseline Plateau [s] : 0.5

**Filter Settings**

Filter Width [s] : 0.5  
Polynomial Order : 4

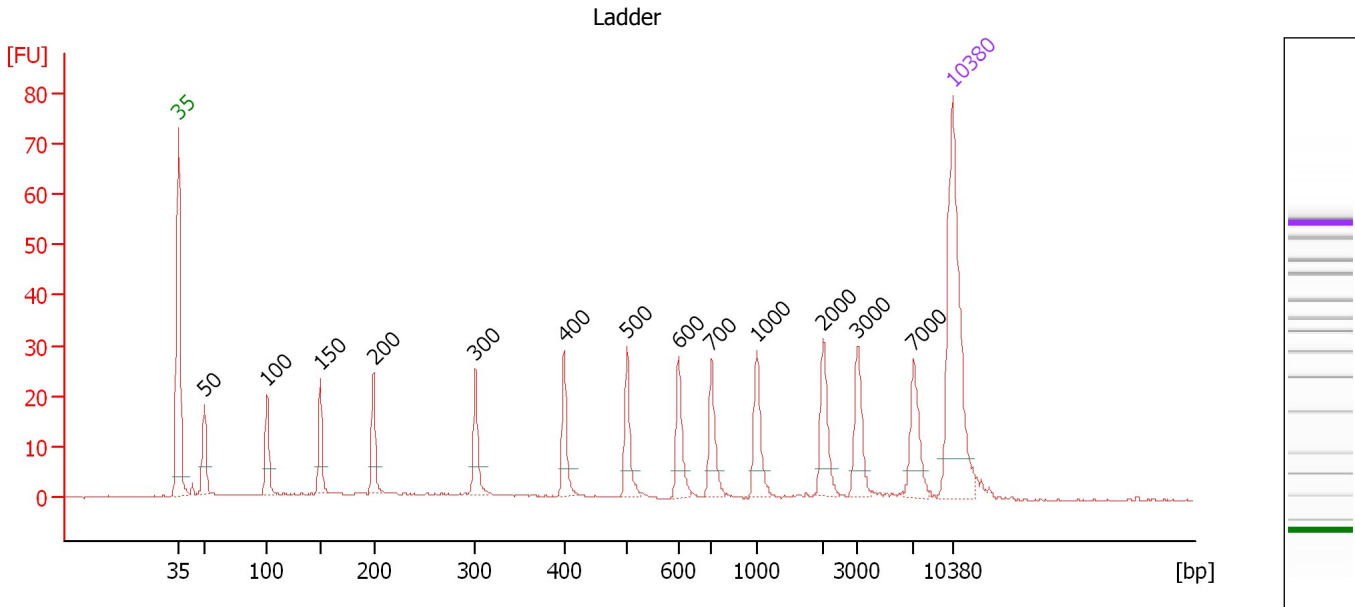
**Ladder**

Ladder Peak	Size	Area
1	35	160
2	50	210
3	100	208
4	150	221
5	200	242
6	300	270
7	400	305
8	500	306
9	600	336
10	700	321
11	1000	366
12	2000	413
13	3000	411
14	7000	400
15	10380	214

Assay Class: High Sensitivity DNA Assay  
 Data Path: C:\...ents and Settings\Bioanalyzer\2013-08-19\2013-08-19\_003.xad

Created: 8/19/2013 5:12:45 PM  
 Modified: 8/19/2013 6:07:43 PM

**Electropherogram Summary**



**Overall Results for Ladder**

Noise: 0.1

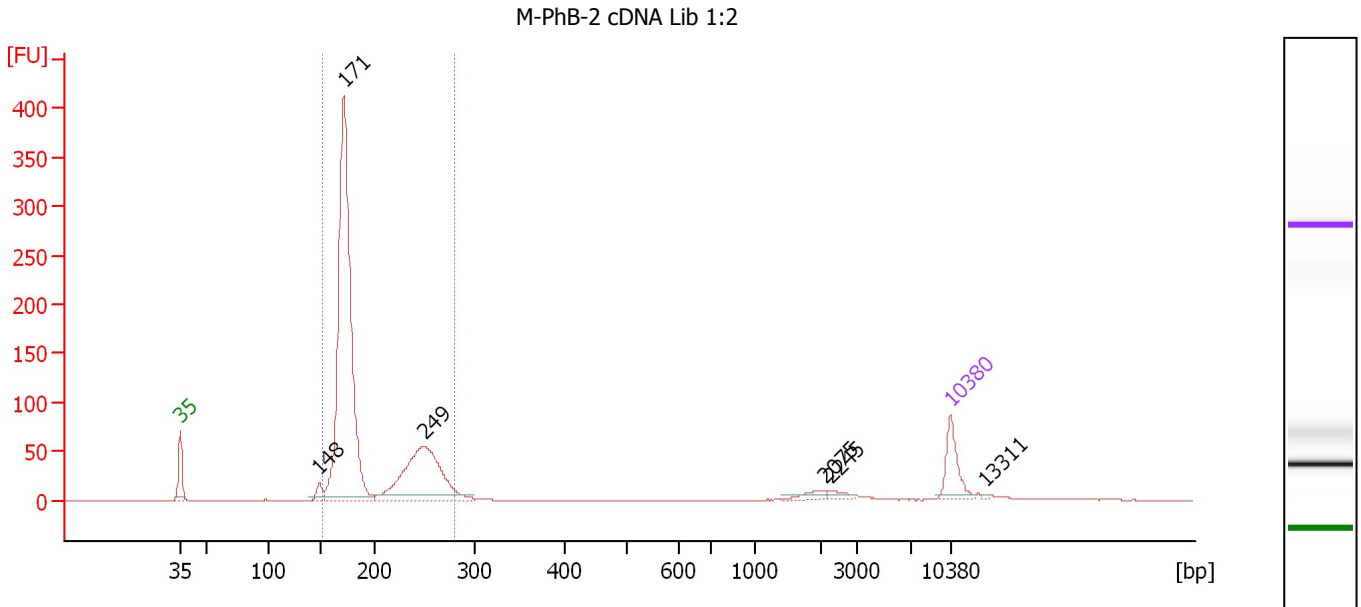
**Peak table for Ladder**

Peak	Size [bp]	Conc. [pg/μl]	Molarity [pmol/l]	Observations
1	35	125.00	5,411.3	Lower Marker
2	50	150.00	4,545.5	Ladder Peak
3	100	150.00	2,272.7	Ladder Peak
4	150	150.00	1,515.2	Ladder Peak
5	200	150.00	1,136.4	Ladder Peak
6	300	150.00	757.6	Ladder Peak
7	400	150.00	568.2	Ladder Peak
8	500	150.00	454.5	Ladder Peak
9	600	150.00	378.8	Ladder Peak
10	700	150.00	324.7	Ladder Peak
11	1,000	150.00	227.3	Ladder Peak
12	2,000	150.00	113.6	Ladder Peak
13	3,000	150.00	75.8	Ladder Peak
14	7,000	150.00	32.5	Ladder Peak
15	10,380	75.00	10.9	Upper Marker

Assay Class: High Sensitivity DNA Assay  
 Data Path: C:\...ents and Settings\Bioanalyzer\2013-08-19\2013-08-19\_003.xad

Created: 8/19/2013 5:12:45 PM  
 Modified: 8/19/2013 6:07:43 PM

**Electropherogram Summary Continued ...**



**Overall Results for sample 1 : M-PhB-2 cDNA Lib 1:2**

Number of peaks found: 6                      Corr. Area 1: 1,286.5  
 Noise: 0.2

**Peak table for sample 1 : M-PhB-2 cDNA Lib 1:2**

Peak	Size [bp]	Conc. [pg/μl]	Molarity [pmol/l]	Observations
1	35	125.00	5,411.3	Lower Marker
2	148	35.35	362.8	
3	171	1,466.08	12,971.8	
4	249	493.89	3,001.3	
5	2,075	20.29	14.8	
6	2,245	15.16	10.2	
7	10,380	75.00	10.9	Upper Marker
8	13,311	0.00	0.0	

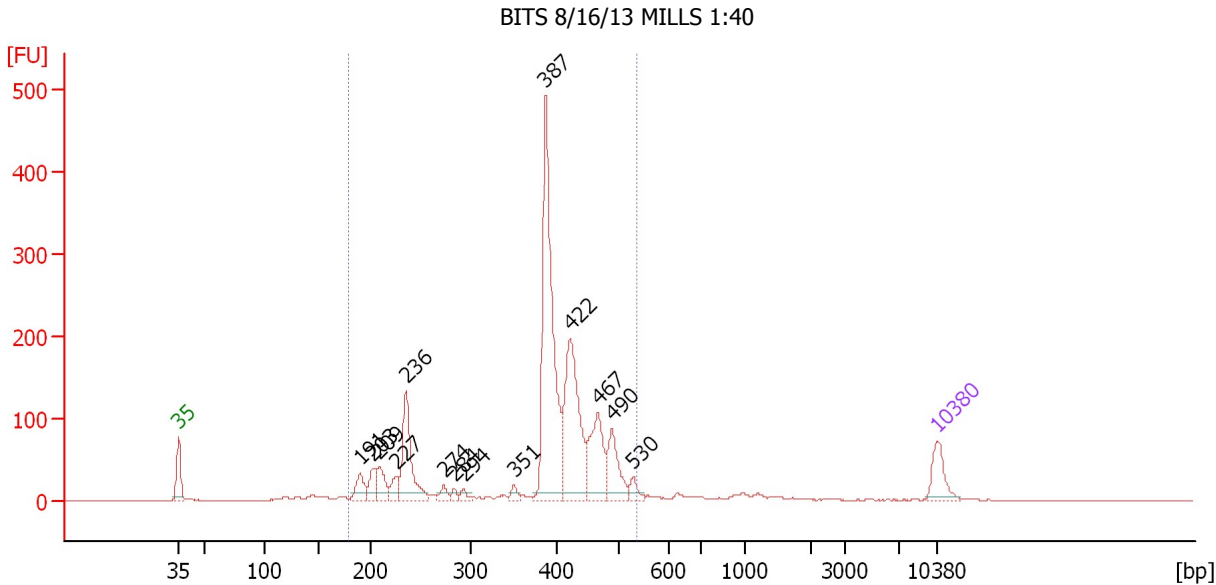
**Region table for sample 1 : M-PhB-2 cDNA Lib 1:2**

From [bp]	To [bp]	Average Size [bp]	Molarity [pmol/l]	Conc. [pg/μl]	Corr. Area	% of Total	Size distribution in CV [%]	Color
151	280	194	15,758.6	1,937.11	1,286.5	91	17.9	Blue

Assay Class: High Sensitivity DNA Assay  
 Data Path: C:\...ents and Settings\Bioanalyzer\2013-08-19\2013-08-19\_003.xad

Created: 8/19/2013 5:12:45 PM  
 Modified: 8/19/2013 6:07:43 PM

**Electropherogram Summary Continued ...**



**Setpoint Deviations for sample 2 : BITS 8/16/13 MILLS 1:40**

Height Threshold [FU] : 10

**Overall Results for sample 2 : BITS 8/16/13 MILLS 1:40**

Number of peaks found: 14                      Corr. Area 1: 1,890.1  
 Noise: 0.2

**Peak table for sample 2 : BITS 8/16/13 MILLS 1:40**

Peak	Size [bp]	Conc. [pg/μl]	Molarity [pmol/l]	Observations
1	35	125.00	5,411.3	Lower Marker
2	191	84.07	667.4	
3	203	66.43	495.3	
4	209	95.92	695.1	
5	227	58.06	388.0	
6	236	301.54	1,933.2	
7	274	30.57	168.9	
8	284	16.97	90.4	
9	294	20.35	104.9	
10	351	23.72	102.4	
11	387	887.93	3,475.8	
12	422	504.29	1,812.5	
13	467	244.18	791.6	
14	490	154.30	477.3	
15	530	35.65	102.0	
16	10,380	75.00	10.9	Upper Marker

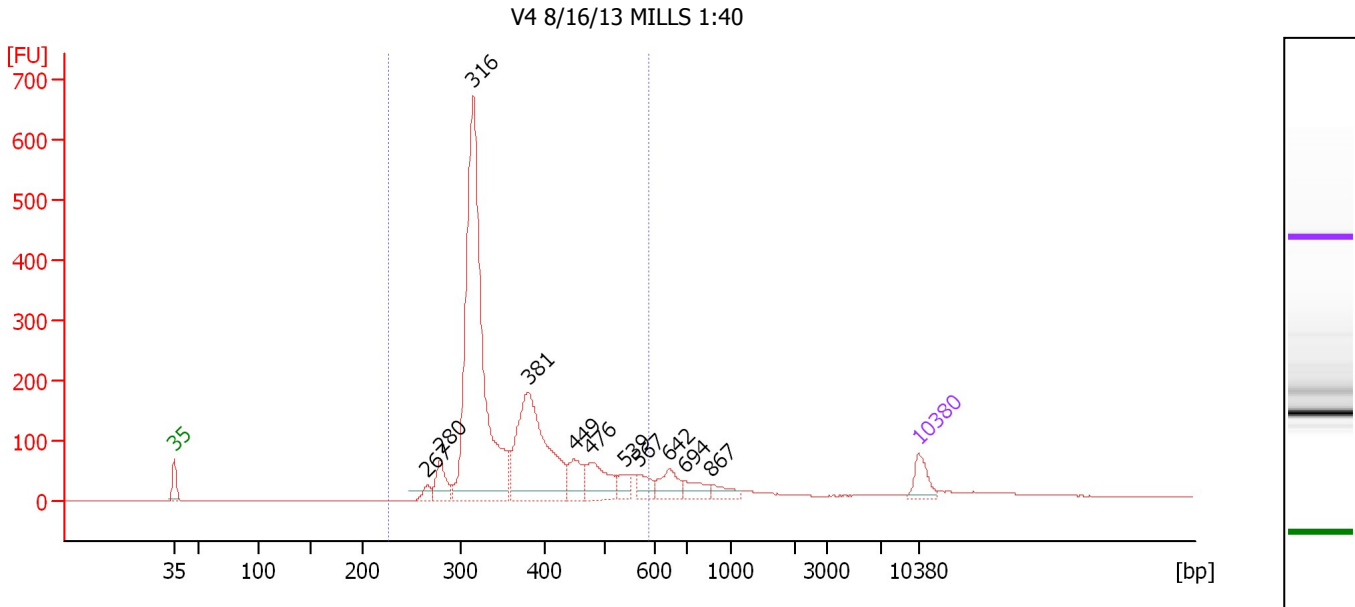
**Region table for sample 2 : BITS 8/16/13 MILLS 1:40**

From [bp]	To [bp]	Average Size [bp]	Molarity [pmol/l]	Conc. [pg/μl]	Corr. Area	% of Total	Size distribution in CV [%]	Color
180	537	383	11,506.9	2,589.05	1,890.1	92	22.1	Blue

Assay Class: High Sensitivity DNA Assay  
 Data Path: C:\...ents and Settings\Bioanalyzer\2013-08-19\2013-08-19\_003.xad

Created: 8/19/2013 5:12:45 PM  
 Modified: 8/19/2013 6:07:43 PM

**Electropherogram Summary Continued ...**



**Setpoint Deviations for sample 3 : V4 8/16/13 MILLS 1:40**

Height Threshold [FU] : 15

**Overall Results for sample 3 : V4 8/16/13 MILLS 1:40**

Number of peaks found: 11                      Corr. Area 1: 3,073.0  
 Noise: 0.1

**Peak table for sample 3 : V4 8/16/13 MILLS 1:40**

Peak	Size [bp]	Conc. [pg/μl]	Molarity [pmol/l]	Observations
1	35	125.00	5,411.3	Lower Marker
2	267	48.54	275.4	
3	280	147.83	799.6	
4	316	2,152.97	10,324.1	
5	381	910.84	3,626.9	
6	449	145.19	489.7	
7	476	208.26	663.3	
8	539	68.60	192.8	
9	567	70.84	189.3	
10	642	119.23	281.3	
11	694	80.06	174.7	
12	867	57.75	100.9	
13	10,380	75.00	10.9	Upper Marker

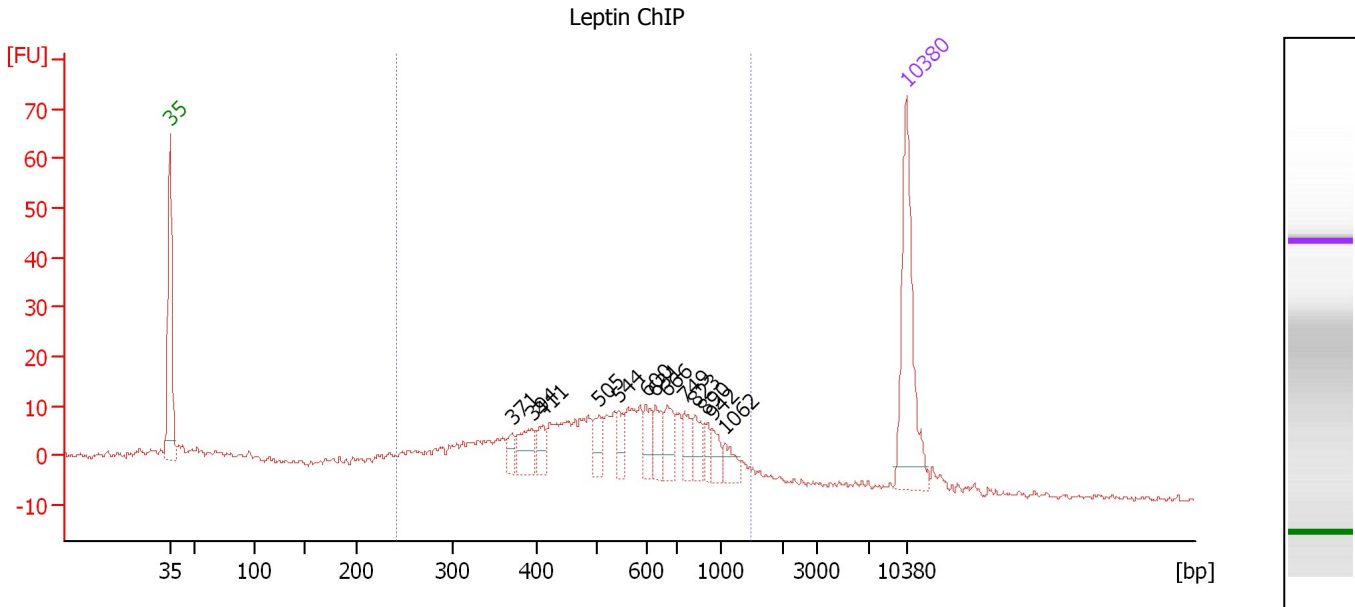
**Region table for sample 3 : V4 8/16/13 MILLS 1:40**

From [bp]	To [bp]	Average Size [bp]	Molarity [pmol/l]	Conc. [pg/μl]	Corr. Area	% of Total	Size distribution in CV [%]	Color
228	589	366	15,892.2	3,692.33	3,073.0	87	19.4	Blue

Assay Class: High Sensitivity DNA Assay  
 Data Path: C:\...ents and Settings\Bioanalyzer\2013-08-19\2013-08-19\_003.xad

Created: 8/19/2013 5:12:45 PM  
 Modified: 8/19/2013 6:07:43 PM

**Electropherogram Summary Continued ...**



**Overall Results for sample 4 : Leptin ChIP**

Number of peaks found: 13      Corr. Area 1: 373.9  
 Noise: 0.6

**Peak table for sample 4 : Leptin ChIP**

Peak	Size [bp]	Conc. [pg/μl]	Molarity [pmol/l]	Observations
1	35	125.00	5,411.3	Lower Marker
2	371	11.24	45.9	
3	394	22.53	86.6	
4	411	13.74	50.7	
5	505	16.28	48.9	
6	544	13.03	36.3	
7	600	15.76	39.8	
8	631	17.48	42.0	
9	666	19.65	44.7	
10	749	15.95	32.3	
11	823	16.56	30.5	
12	890	8.70	14.8	
13	942	10.63	17.1	
14	1,062	11.26	16.1	
15	10,380	75.00	10.9	Upper Marker

**Region table for sample 4 : Leptin ChIP**

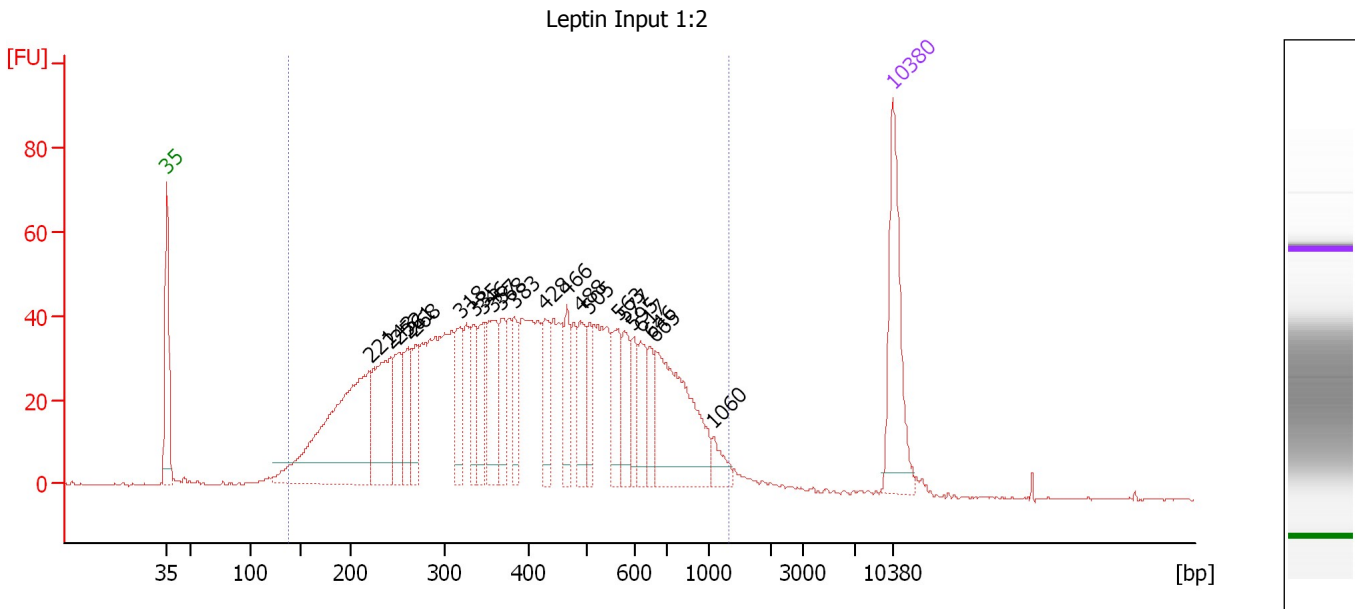
From [bp]	To [bp]	Average Size [bp]	Molarity [pmol/l]	Conc. [pg/μl]	Corr. Area	% of Total	Size distribution in CV [%]	Color
242	1,487	568	1,495.6	457.38	373.9	77	40.5	Blue



Assay Class: High Sensitivity DNA Assay  
 Data Path: C:\...ents and Settings\Bioanalyzer\2013-08-19\2013-08-19\_003.xad

Created: 8/19/2013 5:12:45 PM  
 Modified: 8/19/2013 6:07:43 PM

**Electropherogram Summary Continued ...**



**Overall Results for sample 5 : Leptin Input 1:2**

Number of peaks found: 22                      Corr. Area 1: 1,740.4  
 Noise: 0.3

**Peak table for sample 5 : Leptin Input 1:2**

Peak	Size [bp]	Conc. [pg/μl]	Molarity [pmol/l]	Observations
1	35	125.00	5,411.3	Lower Marker
2	221	262.81	1,800.2	
3	243	108.88	679.0	
4	252	53.17	319.8	
5	261	44.83	259.9	
6	268	39.13	221.1	
7	318	45.40	216.3	
8	335	38.51	174.3	
9	346	43.78	192.0	
10	357	66.59	282.5	
11	368	39.89	164.2	
12	383	38.75	153.4	
13	428	41.48	146.7	
14	466	35.89	116.6	
15	488	41.38	128.5	
16	505	31.06	93.2	
17	563	37.72	101.4	
18	577	34.23	89.9	
19	595	24.55	62.5	
20	617	32.89	80.8	
21	646	23.10	54.2	
22	665	133.88	305.0	
23	1,060	14.78	21.1	
24	10,380	75.00	10.9	Upper Marker

Assay Class: High Sensitivity DNA Assay  
Data Path: C:\...ents and Settings\Bioanalyzer\2013-08-19\2013-08-19\_003.xad

Created: 8/19/2013 5:12:45 PM  
Modified: 8/19/2013 6:07:43 PM

**Electropherogram Summary Continued ...**

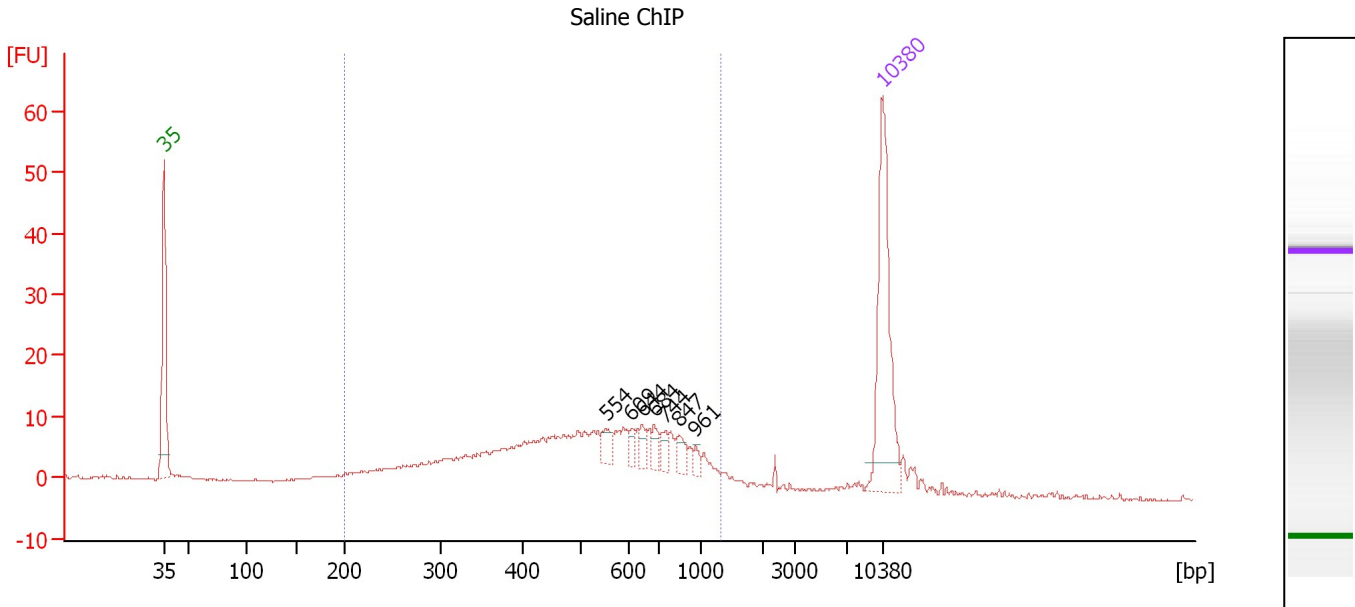
... Region table for sample 5 : Leptin Input 1:2

From [bp]	To [bp]	Average Size [bp]	Molarity [pmol/l]	Conc. [pg/μl]	Corr. Area	% of Total	Size distribution in CV [%]	Color
138	1,319	433	8,790.5	1,892.65	1,740.4	96	45.5	■

Assay Class: High Sensitivity DNA Assay  
 Data Path: C:\...ents and Settings\Bioanalyzer\2013-08-19\2013-08-19\_003.xad

Created: 8/19/2013 5:12:45 PM  
 Modified: 8/19/2013 6:07:43 PM

**Electropherogram Summary Continued ...**



**Overall Results for sample 6 : Saline ChIP**

Number of peaks found: 7      Corr. Area 1: 267.6  
 Noise: 0.2

**Peak table for sample 6 : Saline ChIP**

Peak	Size [bp]	Conc. [pg/μl]	Molarity [pmol/l]	Observations
1	35	125.00	5,411.3	Lower Marker
2	554	9.69	26.5	
3	609	6.12	15.2	
4	644	7.12	16.8	
5	684	8.11	18.0	
6	744	7.10	14.5	
7	847	8.59	15.4	
8	961	4.27	6.7	
9	10,380	75.00	10.9	Upper Marker

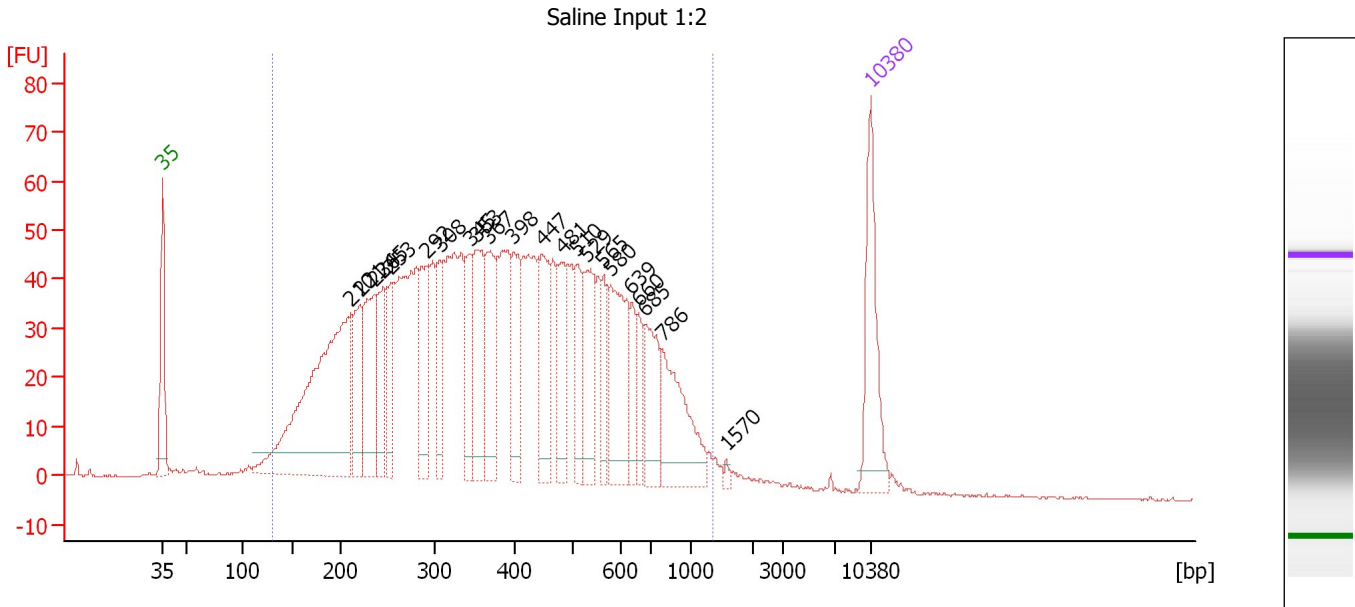
**Region table for sample 6 : Saline ChIP**

From [bp]	To [bp]	Average Size [bp]	Molarity [pmol/l]	Conc. [pg/μl]	Corr. Area	% of Total	Size distribution in CV [%]	Color
200	1,317	540	1,330.6	381.93	267.6	90	39.5	Blue

Assay Class: High Sensitivity DNA Assay  
 Data Path: C:\...ents and Settings\Bioanalyzer\2013-08-19\2013-08-19\_003.xad

Created: 8/19/2013 5:12:45 PM  
 Modified: 8/19/2013 6:07:43 PM

**Electropherogram Summary Continued ...**



**Overall Results for sample 7 : Saline Input 1:2**

Number of peaks found: 22                      Corr. Area 1: 2,064.8  
 Noise: 0.2

**Peak table for sample 7 : Saline Input 1:2**

Peak	Size [bp]	Conc. [pg/μl]	Molarity [pmol/l]	Observations
1	35	125.00	5,411.3	Lower Marker
2	210	397.95	2,872.8	
3	221	80.20	550.4	
4	236	108.73	699.2	
5	245	78.83	486.8	
6	253	61.10	365.3	
7	292	75.15	390.3	
8	308	65.07	320.5	
9	345	61.60	270.4	
10	353	96.63	414.7	
11	367	97.15	401.2	
12	398	70.73	269.4	
13	447	86.10	291.8	
14	481	71.49	225.1	
15	510	47.79	142.0	
16	529	74.90	214.5	
17	565	38.64	103.6	
18	580	105.83	276.5	
19	639	32.16	76.3	
20	660	30.39	69.7	
21	685	61.86	136.9	
22	786	100.87	194.3	
23	1,570	3.00	2.9	
24	10,380	75.00	10.9	Upper Marker

Assay Class: High Sensitivity DNA Assay  
Data Path: C:\...ents and Settings\Bioanalyzer\2013-08-19\2013-08-19\_003.xad

Created: 8/19/2013 5:12:45 PM  
Modified: 8/19/2013 6:07:43 PM

**Electropherogram Summary Continued ...**

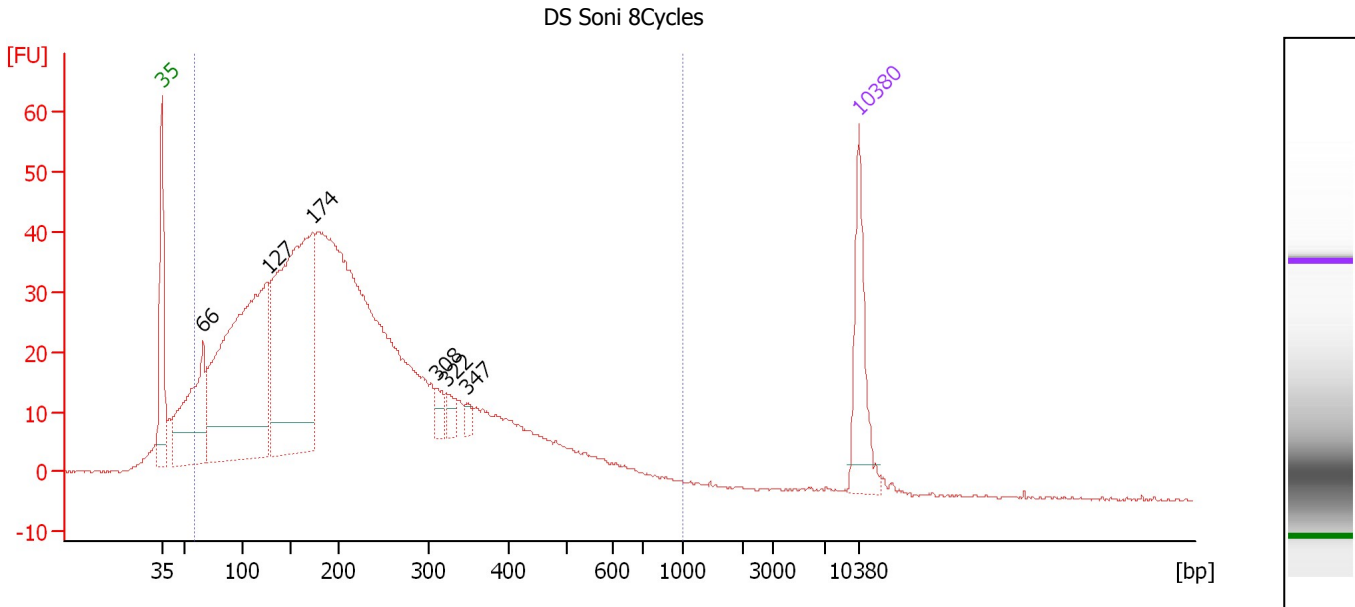
... Region table for sample 7 : Saline Input 1:2

From [bp]	To [bp]	Average Size [bp]	Molarity [pmol/l]	Conc. [pg/μl]	Corr. Area	% of Total	Size distribution in CV [%]	Color
129	1,345	417	13,737.5	2,817.49	2,064.8	97	46.4	■

Assay Class: High Sensitivity DNA Assay  
 Data Path: C:\...ents and Settings\Bioanalyzer\2013-08-19\2013-08-19\_003.xad

Created: 8/19/2013 5:12:45 PM  
 Modified: 8/19/2013 6:07:43 PM

**Electropherogram Summary Continued ...**



**Overall Results for sample 8 : DS Soni 8Cycles**

Number of peaks found: 6                      Corr. Area 1: 1,408.3  
 Noise: 0.2

**Peak table for sample 8 : DS Soni 8Cycles**

Peak	Size [bp]	Conc. [pg/μl]	Molarity [pmol/l]	Observations
1	35	125.00	5,411.3	Lower Marker
2	66	220.10	5,061.9	
3	127	636.83	7,603.6	
4	174	579.81	5,062.7	
5	308	20.50	100.8	
6	322	19.89	93.7	
7	347	9.42	41.1	
8	10,380	75.00	10.9	Upper Marker

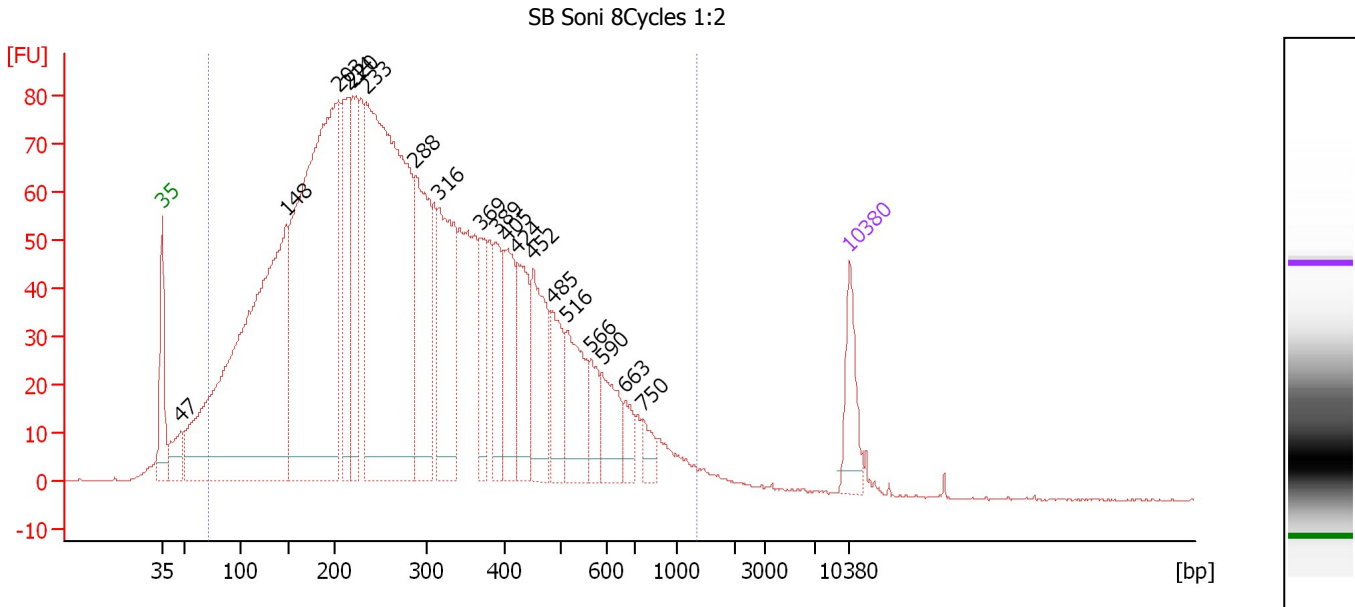
**Region table for sample 8 : DS Soni 8Cycles**

From [bp]	To [bp]	Average Size [bp]	Molarity [pmol/l]	Conc. [pg/μl]	Corr. Area	% of Total	Size distribution in CV [%]	Color
58	1,000	228	30,440.6	3,092.34	1,408.3	94	57.1	Blue

Assay Class: High Sensitivity DNA Assay  
 Data Path: C:\...ents and Settings\Bioanalyzer\2013-08-19\2013-08-19\_003.xad

Created: 8/19/2013 5:12:45 PM  
 Modified: 8/19/2013 6:07:43 PM

**Electropherogram Summary Continued ...**



**Overall Results for sample 9 : SB Soni 8Cycles 1:2**

Number of peaks found: 19                      Corr. Area 1: 3,223.3  
 Noise: 0.1

**Peak table for sample 9 : SB Soni 8Cycles 1:2**

Peak	Size [bp]	Conc. [pg/μl]	Molarity [pmol/l]	Observations
1	35	125.00	5,411.3	Lower Marker
2	47	91.99	2,946.1	
3	148	1,590.45	16,267.9	
4	203	1,446.99	10,776.8	
5	214	281.71	1,994.1	
6	220	278.36	1,917.6	
7	233	1,384.10	8,981.5	
8	288	366.91	1,928.3	
9	316	349.22	1,676.1	
10	369	123.48	506.7	
11	389	122.35	476.6	
12	405	161.76	604.6	
13	424	154.39	552.3	
14	452	195.41	654.8	
15	485	120.64	377.2	
16	516	156.49	459.5	
17	566	60.99	163.3	
18	590	97.51	250.3	
19	663	39.80	91.0	
20	750	34.66	70.0	
21	10,380	75.00	10.9	Upper Marker

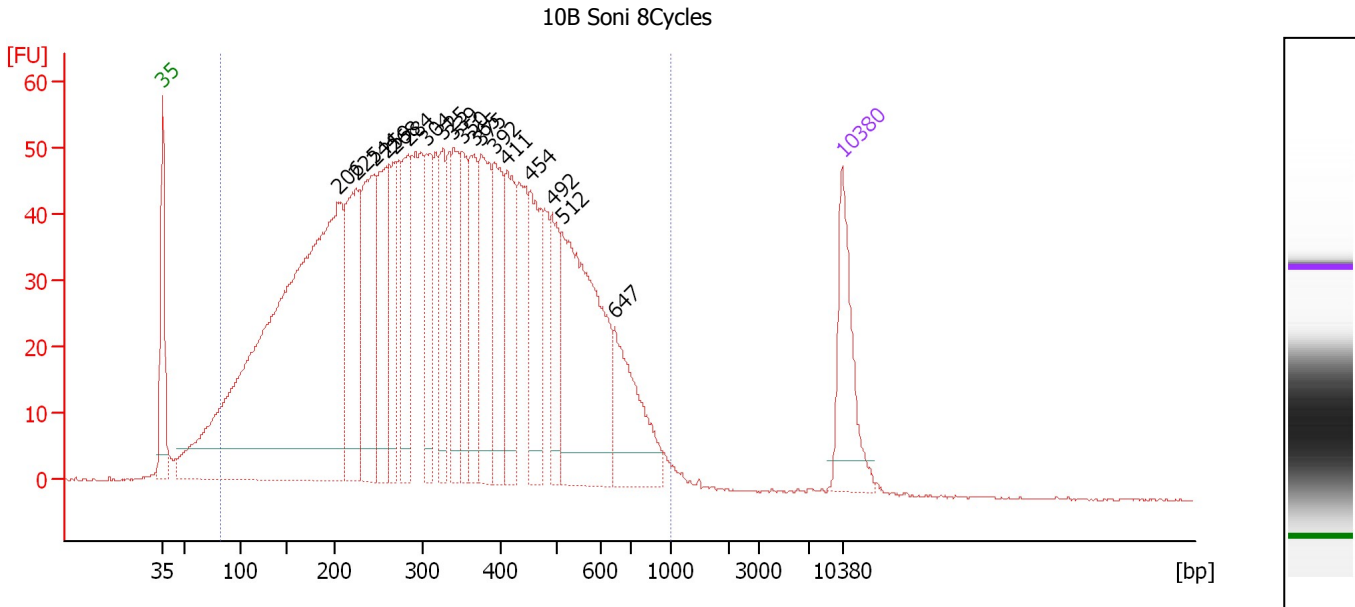
**Region table for sample 9 : SB Soni 8Cycles 1:2**

From [bp]	To [bp]	Average Size [bp]	Molarity [pmol/l]	Conc. [pg/μl]	Corr. Area	% of Total	Size distribution in CV [%]	Color
71	1,344	308	58,624.4	8,040.43	3,223.3	96	54.5	Blue

Assay Class: High Sensitivity DNA Assay  
 Data Path: C:\...ents and Settings\Bioanalyzer\2013-08-19\2013-08-19\_003.xad

Created: 8/19/2013 5:12:45 PM  
 Modified: 8/19/2013 6:07:43 PM

**Electropherogram Summary Continued ...**



**Overall Results for sample 10 : 10B Soni 8Cycles**

Number of peaks found: 18      Corr. Area 1: 2,294.2  
 Noise: 0.2

**Peak table for sample 10 : 10B Soni 8Cycles**

Peak	Size [bp]	Conc. [pg/μl]	Molarity [pmol/l]	Observations
1	35	125.00	5,411.3	Lower Marker
2	206	1,084.75	7,988.8	
3	225	195.93	1,317.0	
4	244	197.06	1,221.2	
5	259	151.00	884.0	
6	268	85.07	480.3	
7	284	115.93	618.8	
8	304	93.17	464.3	
9	325	83.13	387.2	
10	339	98.26	439.1	
11	350	78.19	338.5	
12	365	96.54	400.6	
13	375	135.28	547.0	
14	392	107.74	416.6	
15	411	97.46	359.5	
16	454	103.45	345.1	
17	492	66.96	206.3	
18	512	277.47	820.6	
19	647	107.38	251.6	
20	10,380	75.00	10.9	Upper Marker

**Region table for sample 10 : 10B Soni 8Cycles**

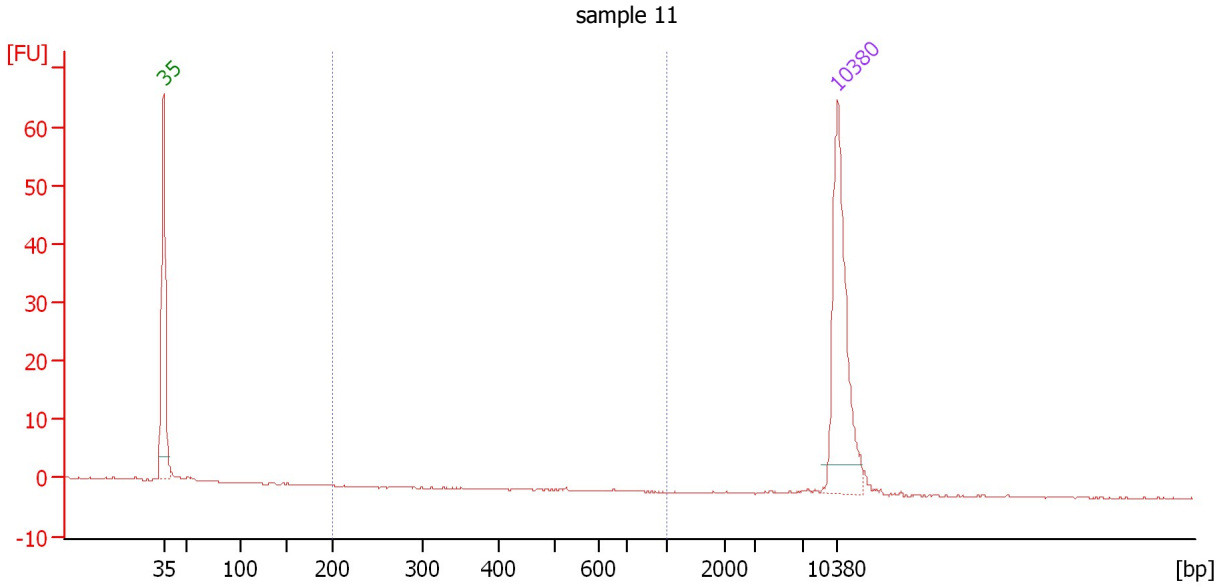
From [bp]	To [bp]	Average Size [bp]	Molarity [pmol/l]	Conc. [pg/μl]	Corr. Area	% of Total	Size distribution in CV [%]	Color
81	1,000	345	24,424.3	3,871.67	2,294.2	96	46.0	Blue



Assay Class: High Sensitivity DNA Assay  
 Data Path: C:\...ents and Settings\Bioanalyzer\2013-08-19\2013-08-19\_003.xad

Created: 8/19/2013 5:12:45 PM  
 Modified: 8/19/2013 6:07:43 PM

**Electropherogram Summary Continued ...**



**Overall Results for sample 11 : sample 11**

Number of peaks found: 0                      Corr. Area 1: 0.0  
 Noise: 0.1

**Peak table for sample 11 : sample 11**

Peak	Size [bp]	Conc. [pg/μl]	Molarity [pmol/l]	Observations
1	35	125.00	5,411.3	Lower Marker
2	10,380	75.00	10.9	Upper Marker

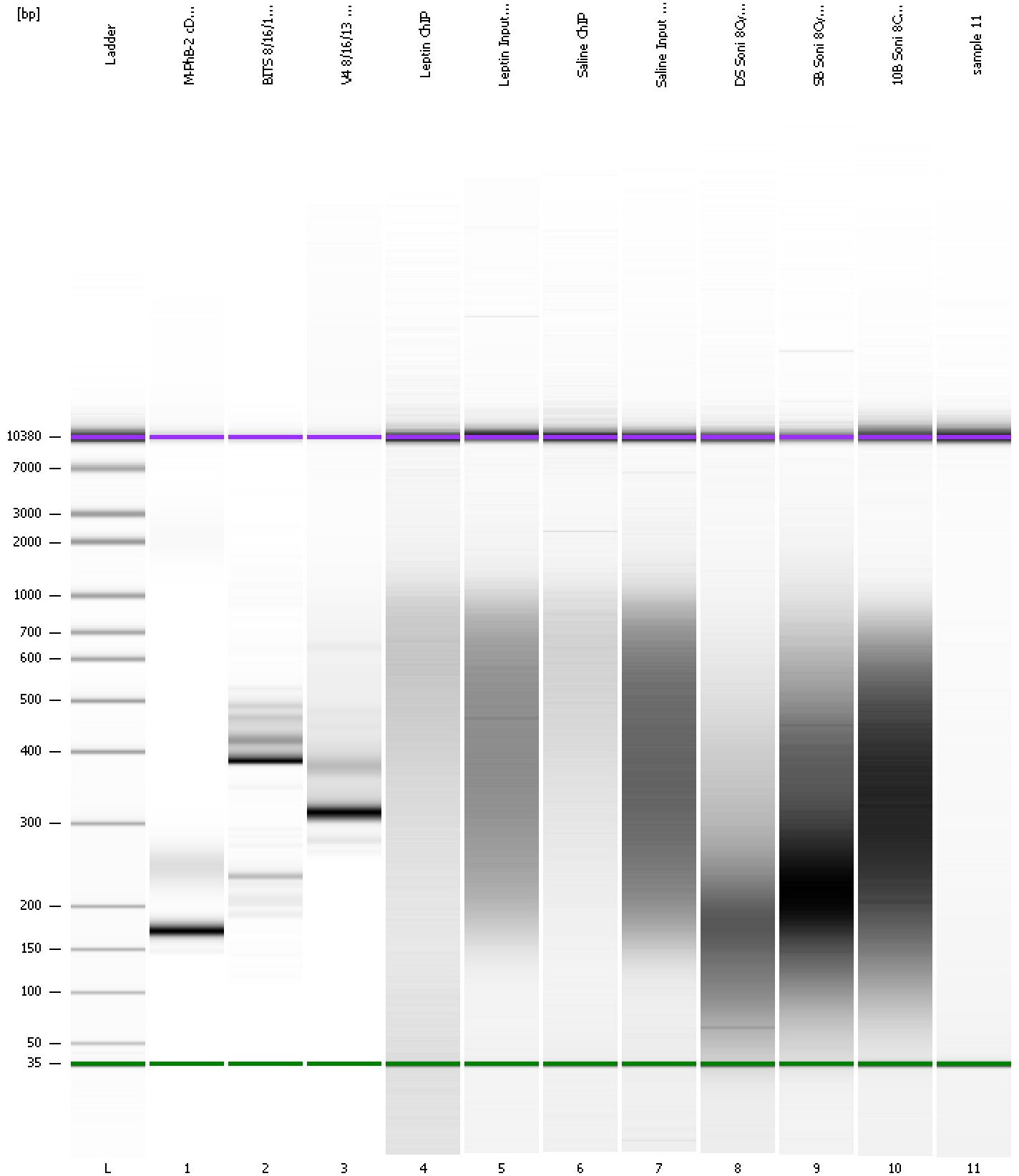
**Region table for sample 11 : sample 11**

From [bp]	To [bp]	Average Size [bp]	Molarity [pmol/l]	Conc. [pg/μl]	Corr. Area	% of Total	Size distribution in CV [%]	Color
200	1,000	0	0.0	0.00	0.0	0	0.0	Blue

Assay Class: High Sensitivity DNA Assay  
Data Path: C:\...ents and Settings\Bioanalyzer\2013-08-19\2013-08-19\_003.xad

Created: 8/19/2013 5:12:45 PM  
Modified: 8/19/2013 6:07:43 PM

**Gel Image**



Assay Class: High Sensitivity DNA Assay  
 Data Path: C:\...ents and Settings\Bioanalyzer\2013-08-19\2013-08-19\_003.xad

Created: 8/19/2013 5:12:45 PM  
 Modified: 8/19/2013 6:07:43 PM

**Run Logbook**

Description	Number	Source	Category	Sub Category	Time	Time Zone	User	Host
Run ended on port 1 (Number of wells acquired: 12)		Instrument	Run		8/19/2013 5:53:58 PM	(GMT --07:00) Pacific Standard Time	UC Davis	D8XSMGH1
Run started on port 1 (File: C:\Documents and Settings\Bioanalyzer\2013-08-19\2013-08-19_003.xad)		Instrument	Run		8/19/2013 5:12:45 PM	(GMT --07:00) Pacific Standard Time	UC Davis	D8XSMGH1
Product Number : G2938B		Instrument	Run		8/19/2013 5:12:45 PM	(GMT --07:00) Pacific Standard Time	UC Davis	D8XSMGH1
Name :		Instrument	Run		8/19/2013 5:12:45 PM	(GMT --07:00) Pacific Standard Time	UC Davis	D8XSMGH1
Vendor : Agilent Technologies		Instrument	Run		8/19/2013 5:12:45 PM	(GMT --07:00) Pacific Standard Time	UC Davis	D8XSMGH1
Serial# : DE13701086		Instrument	Run		8/19/2013 5:12:45 PM	(GMT --07:00) Pacific Standard Time	UC Davis	D8XSMGH1
Firmware : C.01.069		Instrument	Run		8/19/2013 5:12:45 PM	(GMT --07:00) Pacific Standard Time	UC Davis	D8XSMGH1
Cartridge : Electrode		Instrument	Run		8/19/2013 5:12:45 PM	(GMT --07:00) Pacific Standard Time	UC Davis	D8XSMGH1