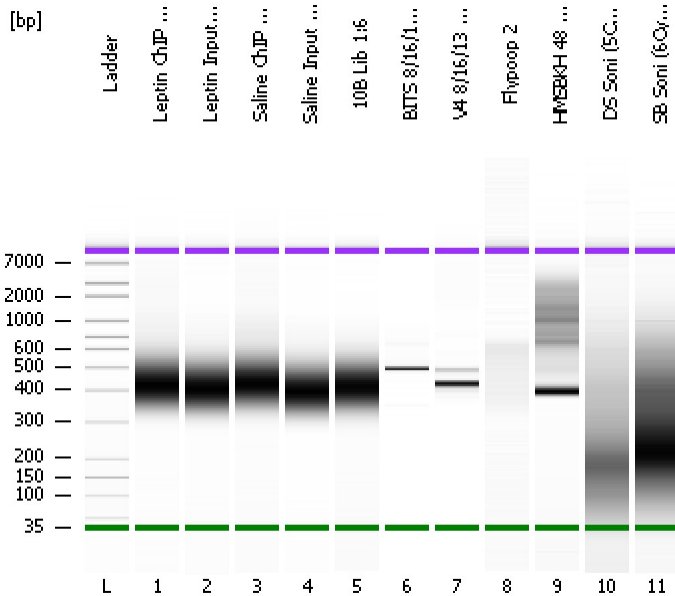


Assay Class: High Sensitivity DNA Assay  
Data Path: C:\...ents and Settings\Bioanalyzer\2013-08-21\2013-08-21\_003.xad

Created: 8/21/2013 1:53:28 PM  
Modified: 8/21/2013 2:44:14 PM

**Electrophoresis File Run Summary**



Instrument Information:

Instrument Name: DE13701086      Firmware: C.01.069  
Serial#: DE13701086      Type: G2938B

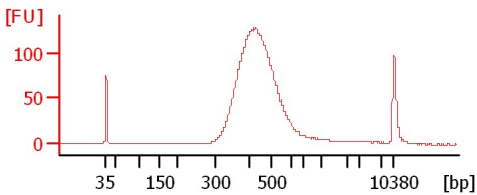
Assay Information:

Assay Origin Path: C:\Program Files\Agilent\2100 bioanalyzer\2100 expert\assays\dsDNA\High Sensitivity DNA.xsy  
Assay Class: High Sensitivity DNA Assay  
Version: 1.03  
Assay Comments: Copyright © 2003-2010 Agilent Technologies

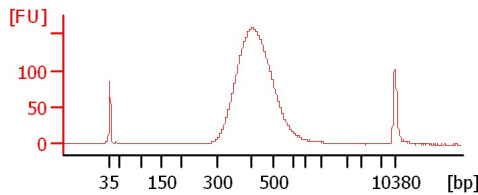
Chip Information:

Chip Lot #:   
Reagent Kit Lot #:   
Chip Comments:

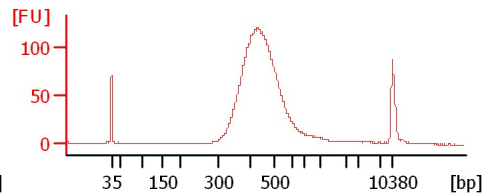
**Leptin ChIP Lib 1:22**



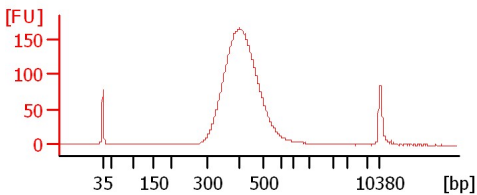
**Leptin Input Lib 1:10**



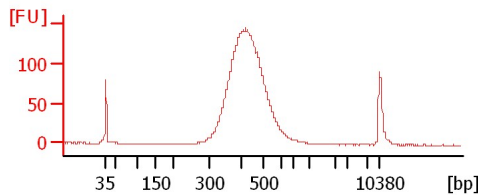
**Saline ChIP Lib 1:16**



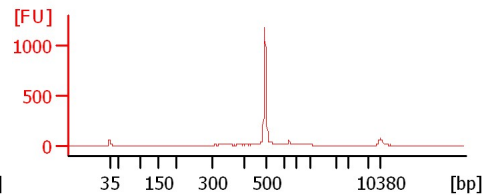
**Saline Input Lib 1:7**



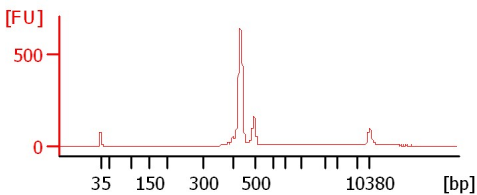
**10B Lib 1:6**



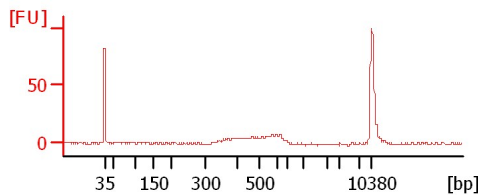
**BITS 8/16/13 MILLS Lib 1:12**



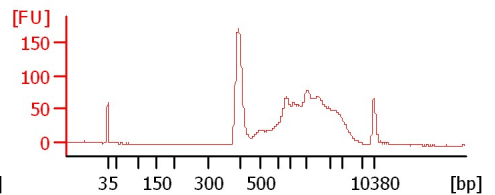
**V4 8/16/13 MILLS Lib 1:17**



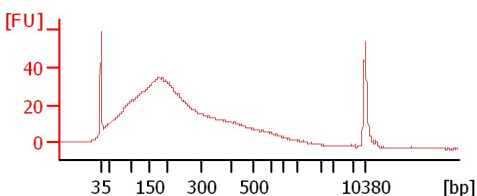
**Flycoop 2**



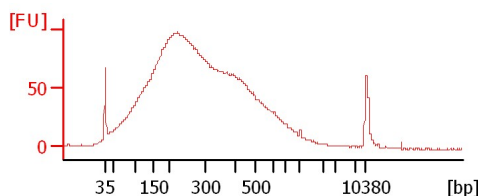
**HMSBKH 48 1:6**



**DS Soni (5Cycles)**



**SB Soni (6Cycles) 1:2**



Assay Class: High Sensitivity DNA Assay  
Data Path: C:\...ents and Settings\Bioanalyzer\2013-08-21\2013-08-21\_003.xad

Created: 8/21/2013 1:53:28 PM  
Modified: 8/21/2013 2:44:14 PM

**Electrophoresis File Run Summary (Chip Summary)**

Sample Name	Sample Comment	Rest. Digest	Status	Observation	Result Label	Result Color
Leptin ChIP Lib 1:22		<input type="checkbox"/>	✓			
Leptin Input Lib 1:10		<input type="checkbox"/>	✓			
Saline ChIP Libn1:16		<input type="checkbox"/>	✓			
Saline Input Libn1:7		<input type="checkbox"/>	✓			
10B Lib 1:6		<input type="checkbox"/>	✓			
BITS 8/16/13 MILLS Lib 1:12		<input type="checkbox"/>	✓			
V4 8/16/13 MILLS Lib 1:17		<input type="checkbox"/>	✓			
Flypooop 2		<input type="checkbox"/>	✓			
HMSBKH 48 1:6		<input type="checkbox"/>	✓			
DS Soni (5Cycles)		<input type="checkbox"/>	✓			
SB Soni (6Cycles) 1:2		<input type="checkbox"/>	✓			
Ladder		<input type="checkbox"/>	✓			

**Chip Lot #**

**Reagent Kit Lot #**

**Chip Comments :**

Assay Class: High Sensitivity DNA Assay  
Data Path: C:\...ents and Settings\Bioanalyzer\2013-08-21\2013-08-21\_003.xad

Created: 8/21/2013 1:53:28 PM  
Modified: 8/21/2013 2:44:14 PM

**Electrophoresis Assay Details**

**General Analysis Settings**

Number of Available Sample and Ladder Wells (Max.) : 12  
Minimum Visible Range [s] : 32  
Maximum Visible Range [s] : 138  
Start Analysis Time Range [s] : 33  
End Analysis Time Range [s] : 137.5  
Ladder Concentration [pg/μl] : 1950  
Uses Standard Area for Ladder Fragments  
Lower Marker Concentration [pg/μl] : 125  
Upper Marker Concentration [pg/μl] : 75  
Used Upper Marker for Quantitation  
Standard Curve Fit is Point to Point  
Show Data Aligned to Lower and Upper Marker

**Integrator Settings**

Integration Start Time [s] : 33.05  
Integration End Time [s] : 137  
Slope Threshold : 0.8  
Height Threshold [FU] : 5  
Area Threshold : 0.1  
Width Threshold [s] : 0.6  
Baseline Plateau [s] : 0.5

**Filter Settings**

Filter Width [s] : 0.5  
Polynomial Order : 4

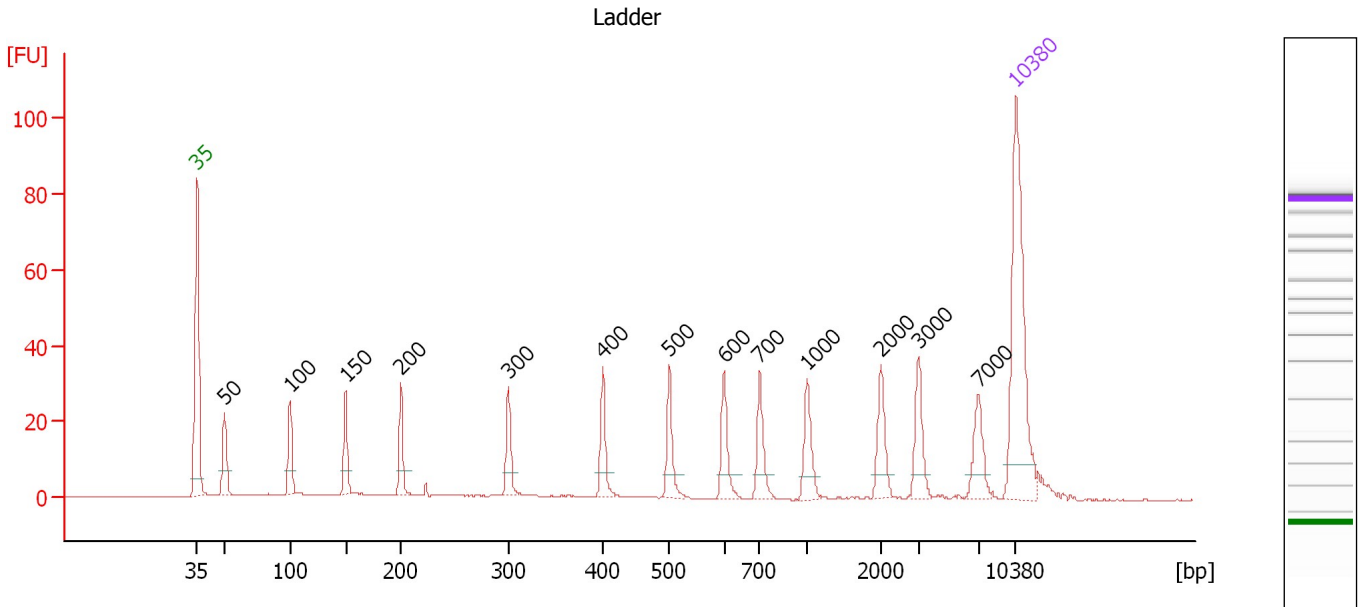
**Ladder**

Ladder Peak	Size	Area
1	35	160
2	50	210
3	100	208
4	150	221
5	200	242
6	300	270
7	400	305
8	500	306
9	600	336
10	700	321
11	1000	366
12	2000	413
13	3000	411
14	7000	400
15	10380	214

Assay Class: High Sensitivity DNA Assay  
 Data Path: C:\...ents and Settings\Bioanalyzer\2013-08-21\2013-08-21\_003.xad

Created: 8/21/2013 1:53:28 PM  
 Modified: 8/21/2013 2:44:14 PM

**Electropherogram Summary**



**Overall Results for Ladder**

Noise: 0.1

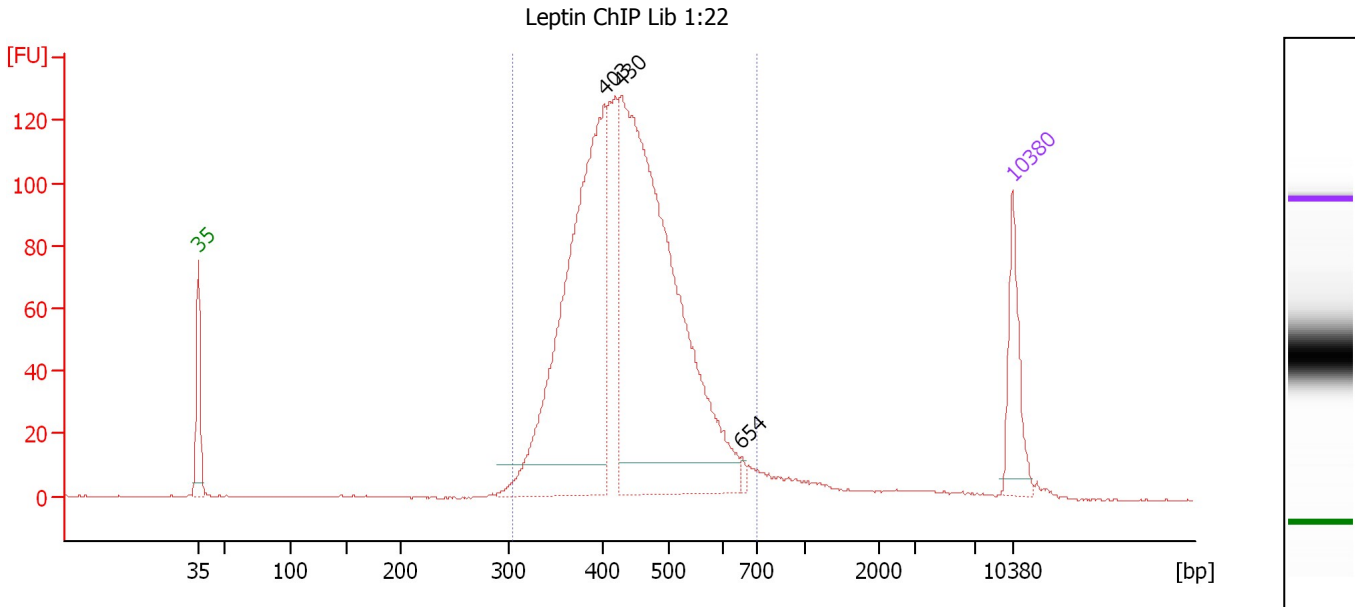
**Peak table for Ladder**

Peak	Size [bp]	Conc. [pg/μl]	Molarity [pmol/l]	Observations
1	35	125.00	5,411.3	Lower Marker
2	50	150.00	4,545.5	Ladder Peak
3	100	150.00	2,272.7	Ladder Peak
4	150	150.00	1,515.2	Ladder Peak
5	200	150.00	1,136.4	Ladder Peak
6	300	150.00	757.6	Ladder Peak
7	400	150.00	568.2	Ladder Peak
8	500	150.00	454.5	Ladder Peak
9	600	150.00	378.8	Ladder Peak
10	700	150.00	324.7	Ladder Peak
11	1,000	150.00	227.3	Ladder Peak
12	2,000	150.00	113.6	Ladder Peak
13	3,000	150.00	75.8	Ladder Peak
14	7,000	150.00	32.5	Ladder Peak
15	10,380	75.00	10.9	Upper Marker

Assay Class: High Sensitivity DNA Assay  
 Data Path: C:\...ents and Settings\Bioanalyzer\2013-08-21\2013-08-21\_003.xad

Created: 8/21/2013 1:53:28 PM  
 Modified: 8/21/2013 2:44:14 PM

**Electropherogram Summary Continued ...**



**Setpoint Deviations for sample 1 : Leptin ChIP Lib 1:22**

Height Threshold [FU] : 10

**Overall Results for sample 1 : Leptin ChIP Lib 1:22**

Number of peaks found: 3                      Corr. Area 1: 1,741.7  
 Noise: 0.2

**Peak table for sample 1 : Leptin ChIP Lib 1:22**

Peak	Size [bp]	Conc. [pg/μl]	Molarity [pmol/l]	Observations
1	35	125.00	5,411.3	Lower Marker
2	403	748.90	2,814.3	
3	430	1,029.30	3,629.1	
4	654	7.37	17.1	
5	10,380	75.00	10.9	Upper Marker

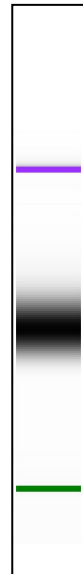
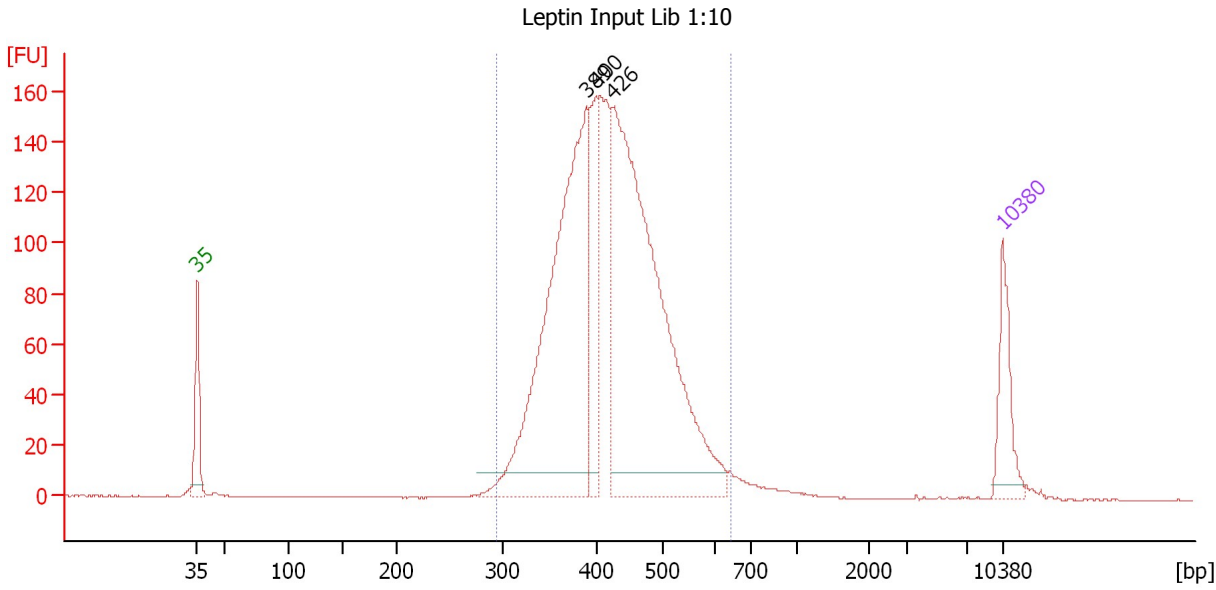
**Region table for sample 1 : Leptin ChIP Lib 1:22**

From [bp]	To [bp]	Average Size [bp]	Molarity [pmol/l]	Conc. [pg/μl]	Corr. Area	% of Total	Size distribution in CV [%]	Color
305	697	442	7,081.8	2,003.27	1,741.7	95	16.1	Blue

Assay Class: High Sensitivity DNA Assay  
 Data Path: C:\...ents and Settings\Bioanalyzer\2013-08-21\2013-08-21\_003.xad

Created: 8/21/2013 1:53:28 PM  
 Modified: 8/21/2013 2:44:14 PM

**Electropherogram Summary Continued ...**



**Setpoint Deviations for sample 2 : Leptin Input Lib 1:10**

Height Threshold [FU] : 10

**Overall Results for sample 2 : Leptin Input Lib 1:10**

Number of peaks found: 3                      Corr. Area 1: 2,128.1  
 Noise: 0.1

**Peak table for sample 2 : Leptin Input Lib 1:10**

Peak	Size [bp]	Conc. [pg/μl]	Molarity [pmol/l]	Observations
1	35	125.00	5,411.3	Lower Marker
2	389	826.37	3,216.1	
3	400	169.54	642.8	
4	426	994.28	3,540.2	
5	10,380	75.00	10.9	Upper Marker

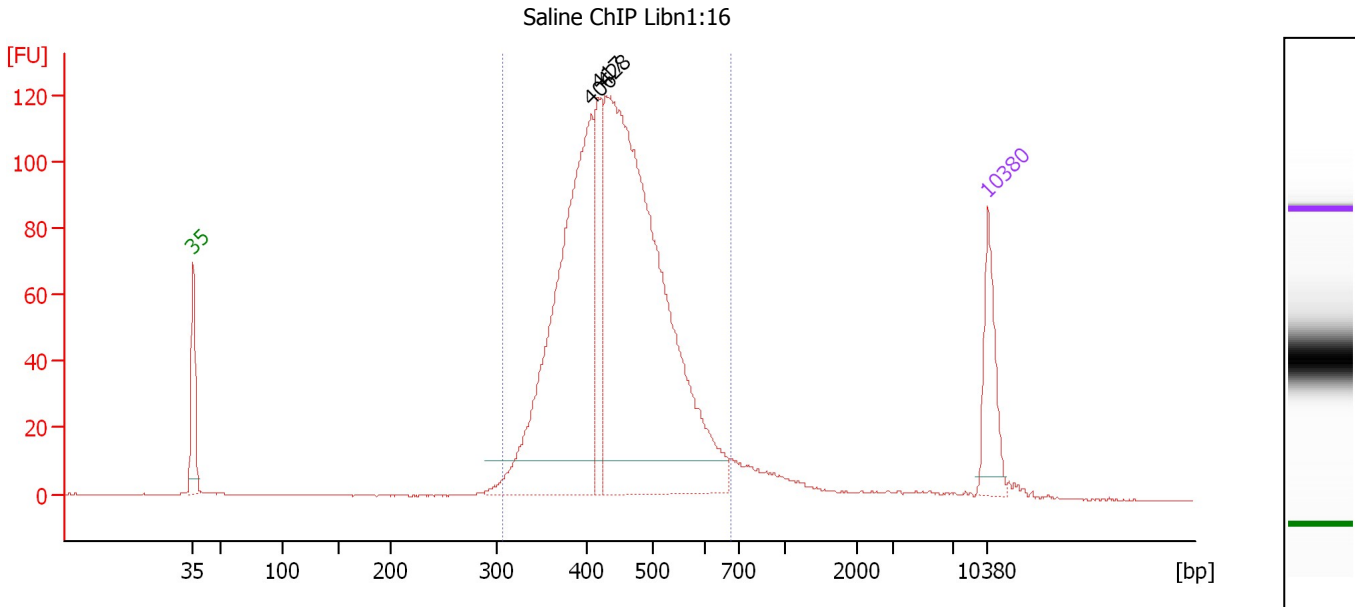
**Region table for sample 2 : Leptin Input Lib 1:10**

From [bp]	To [bp]	Average Size [bp]	Molarity [pmol/l]	Conc. [pg/μl]	Corr. Area	% of Total	Size distribution in CV [%]	Color
295	645	425	8,251.8	2,251.09	2,128.1	97	15.2	Blue

Assay Class: High Sensitivity DNA Assay  
 Data Path: C:\...ents and Settings\Bioanalyzer\2013-08-21\2013-08-21\_003.xad

Created: 8/21/2013 1:53:28 PM  
 Modified: 8/21/2013 2:44:14 PM

**Electropherogram Summary Continued ...**



**Setpoint Deviations for sample 3 : Saline ChIP Libn1:16**

Height Threshold [FU] : 10

**Overall Results for sample 3 : Saline ChIP Libn1:16**

Number of peaks found: 3                      Corr. Area 1: 1,596.7  
 Noise: 0.1

**Peak table for sample 3 : Saline ChIP Libn1:16**

Peak	Size [bp]	Conc. [pg/μl]	Molarity [pmol/l]	Observations
1	35	125.00	5,411.3	Lower Marker
2	406	691.58	2,580.8	
3	417	130.88	475.9	
4	428	1,105.56	3,911.2	
5	10,380	75.00	10.9	Upper Marker

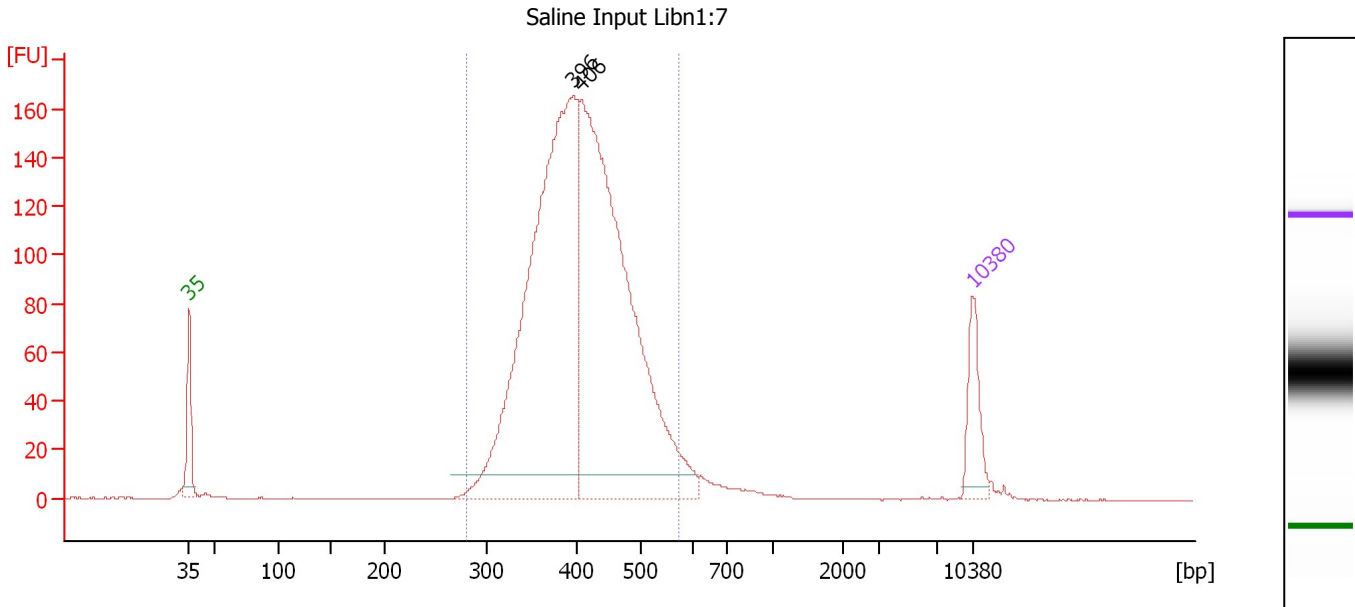
**Region table for sample 3 : Saline ChIP Libn1:16**

From [bp]	To [bp]	Average Size [bp]	Molarity [pmol/l]	Conc. [pg/μl]	Corr. Area	% of Total	Size distribution in CV [%]	Color
307	676	447	6,814.2	1,948.78	1,596.7	93	15.7	Blue

Assay Class: High Sensitivity DNA Assay  
 Data Path: C:\...ents and Settings\Bioanalyzer\2013-08-21\2013-08-21\_003.xad

Created: 8/21/2013 1:53:28 PM  
 Modified: 8/21/2013 2:44:14 PM

**Electropherogram Summary Continued ...**



**Setpoint Deviations for sample 4 : Saline Input Libn1:7**

Height Threshold [FU] : 10

**Overall Results for sample 4 : Saline Input Libn1:7**

Number of peaks found: 2                      Corr. Area 1: 2,134.1  
 Noise: 0.2

**Peak table for sample 4 : Saline Input Libn1:7**

Peak	Size [bp]	Conc. [pg/µl]	Molarity [pmol/l]	Observations
1	35	125.00	5,411.3	Lower Marker
2	396	1,271.08	4,867.0	
3	406	1,251.36	4,664.7	
4	10,380	75.00	10.9	Upper Marker

**Region table for sample 4 : Saline Input Libn1:7**

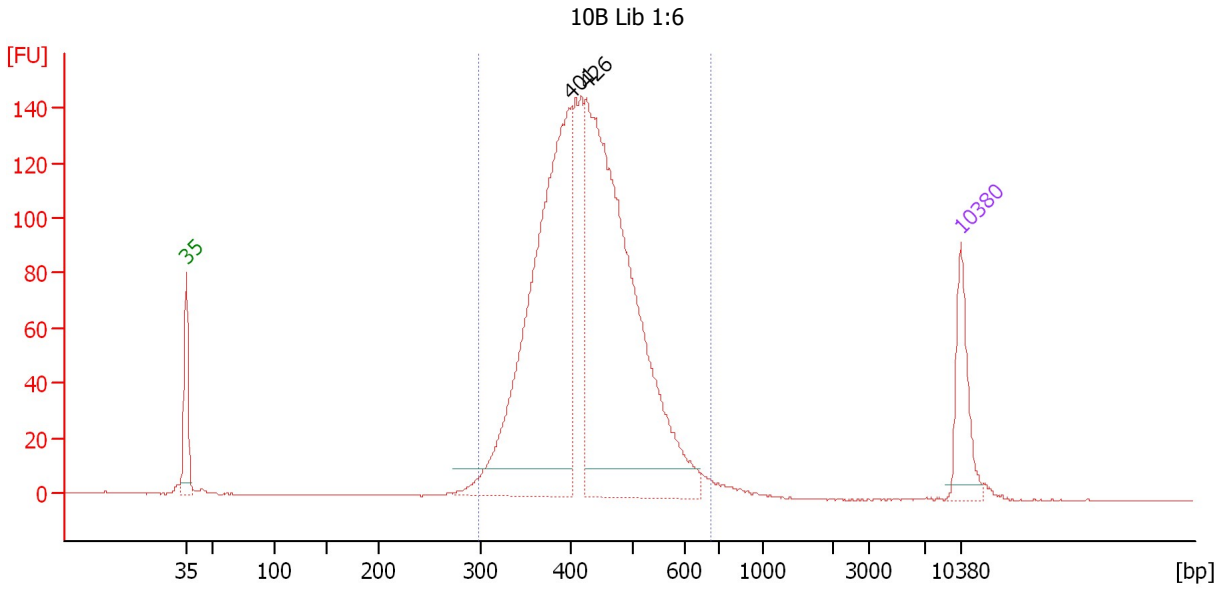
From [bp]	To [bp]	Average Size [bp]	Molarity [pmol/l]	Conc. [pg/µl]	Corr. Area	% of Total	Size distribution in CV [%]	Color
281	572	410	9,663.7	2,557.02	2,134.1	95	14.0	Blue



Assay Class: High Sensitivity DNA Assay  
 Data Path: C:\...ents and Settings\Bioanalyzer\2013-08-21\2013-08-21\_003.xad

Created: 8/21/2013 1:53:28 PM  
 Modified: 8/21/2013 2:44:14 PM

**Electropherogram Summary Continued ...**



**Setpoint Deviations for sample 5 : 10B Lib 1:6**

Height Threshold [FU] : 10

**Overall Results for sample 5 : 10B Lib 1:6**

Number of peaks found: 2                      Corr. Area 1: 1,894.5  
 Noise: 0.1

**Peak table for sample 5 : 10B Lib 1:6**

Peak	Size [bp]	Conc. [pg/µl]	Molarity [pmol/l]	Observations
1	35	125.00	5,411.3	Lower Marker
2	401	809.50	3,055.6	
3	426	971.59	3,456.4	
4	10,380	75.00	10.9	Upper Marker

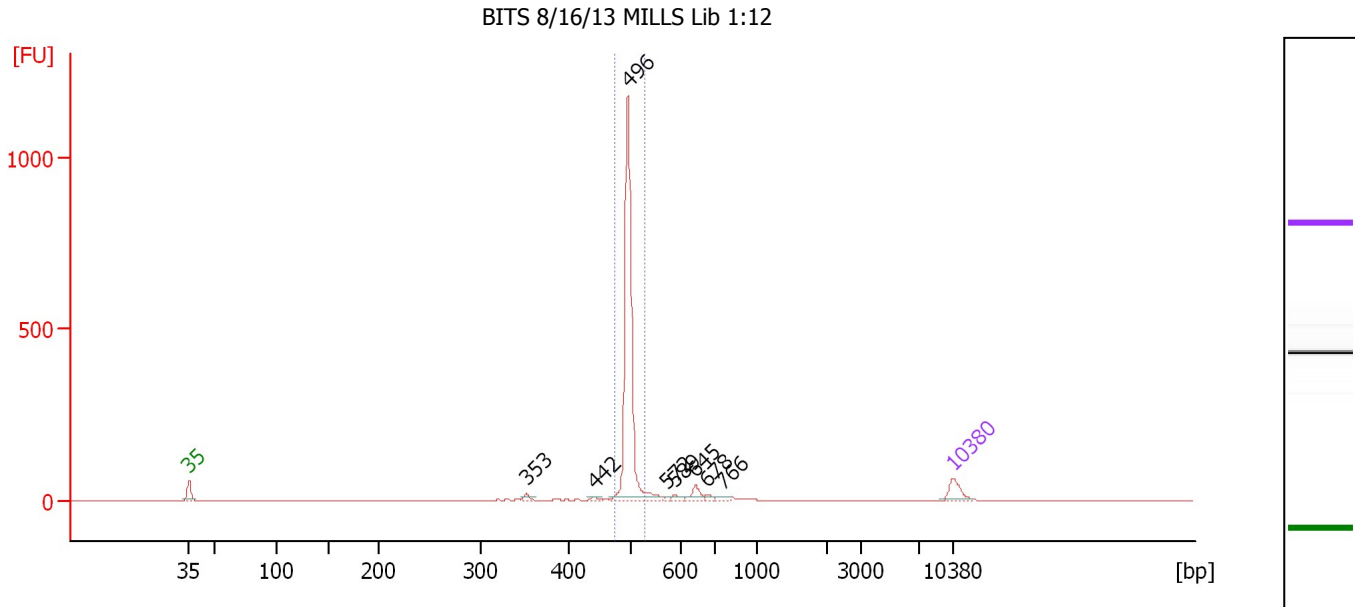
**Region table for sample 5 : 10B Lib 1:6**

From [bp]	To [bp]	Average Size [bp]	Molarity [pmol/l]	Conc. [pg/µl]	Corr. Area	% of Total	Size distribution in CV [%]	Color
298	676	431	7,242.2	2,002.57	1,894.5	97	15.4	Blue

Assay Class: High Sensitivity DNA Assay  
 Data Path: C:\...ents and Settings\Bioanalyzer\2013-08-21\2013-08-21\_003.xad

Created: 8/21/2013 1:53:28 PM  
 Modified: 8/21/2013 2:44:14 PM

**Electropherogram Summary Continued ...**



**Setpoint Deviations for sample 6 : BITS 8/16/13 MILLS Lib 1:12**

Height Threshold [FU] : 10

**Overall Results for sample 6 : BITS 8/16/13 MILLS Lib 1:12**

Number of peaks found: 8                      Corr. Area 1: 994.0  
 Noise: 0.1

**Peak table for sample 6 : BITS 8/16/13 MILLS Lib 1:12**

Peak	Size [bp]	Conc. [pg/μl]	Molarity [pmol/l]	Observations
1	35	125.00	5,411.3	Lower Marker
2	353	27.26	117.0	
3	442	17.62	60.4	
4	496	1,493.14	4,557.1	
5	572	13.10	34.7	
6	589	23.43	60.3	
7	645	62.52	146.9	
8	678	21.19	47.3	
9	766	22.07	43.6	
10	10,380	75.00	10.9	Upper Marker

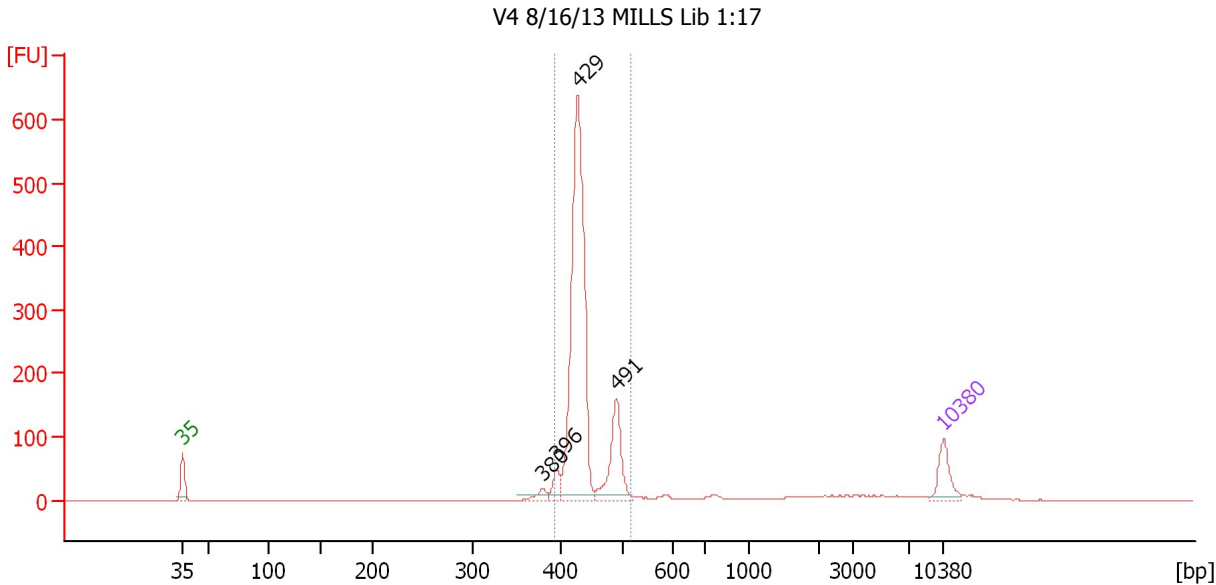
**Region table for sample 6 : BITS 8/16/13 MILLS Lib 1:12**

From [bp]	To [bp]	Average Size [bp]	Molarity [pmol/l]	Conc. [pg/μl]	Corr. Area	% of Total	Size distribution in CV [%]	Color
477	527	498	4,326.1	1,421.57	994.0	78	1.3	Blue

Assay Class: High Sensitivity DNA Assay  
 Data Path: C:\...ents and Settings\Bioanalyzer\2013-08-21\2013-08-21\_003.xad

Created: 8/21/2013 1:53:28 PM  
 Modified: 8/21/2013 2:44:14 PM

**Electropherogram Summary Continued ...**



**Setpoint Deviations for sample 7 : V4 8/16/13 MILLS Lib 1:17**

Height Threshold [FU] : 10

**Overall Results for sample 7 : V4 8/16/13 MILLS Lib 1:17**

Number of peaks found: 4                      Corr. Area 1: 1,362.1  
 Noise: 0.3

**Peak table for sample 7 : V4 8/16/13 MILLS Lib 1:17**

Peak	Size [bp]	Conc. [pg/μl]	Molarity [pmol/l]	Observations
1	35	125.00	5,411.3	Lower Marker
2	380	29.94	119.3	
3	396	50.93	194.8	
4	429	1,110.39	3,922.9	
5	491	235.88	728.1	
6	10,380	75.00	10.9	Upper Marker

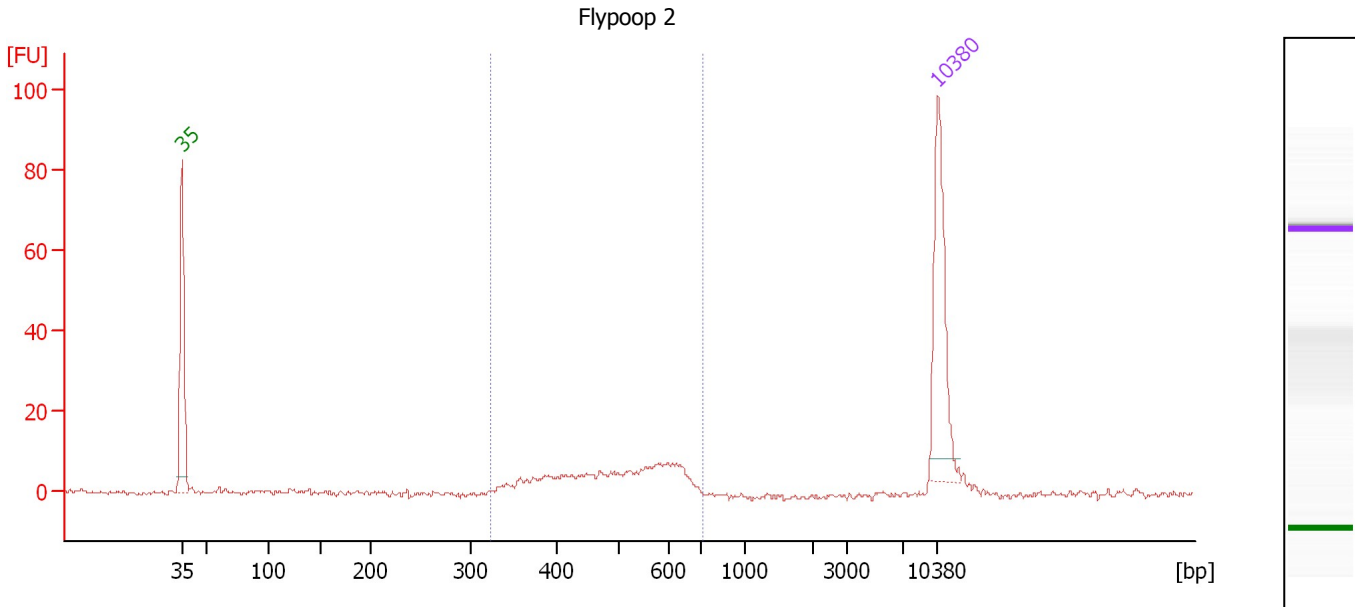
**Region table for sample 7 : V4 8/16/13 MILLS Lib 1:17**

From [bp]	To [bp]	Average Size [bp]	Molarity [pmol/l]	Conc. [pg/μl]	Corr. Area	% of Total	Size distribution in CV [%]	Color
393	517	438	4,807.4	1,389.89	1,362.1	85	5.9	Blue

Assay Class: High Sensitivity DNA Assay  
 Data Path: C:\...ents and Settings\Bioanalyzer\2013-08-21\2013-08-21\_003.xad

Created: 8/21/2013 1:53:28 PM  
 Modified: 8/21/2013 2:44:14 PM

**Electropherogram Summary Continued ...**



**Setpoint Deviations for sample 8 : Flypoop 2**

Height Threshold [FU] : 2

**Overall Results for sample 8 : Flypoop 2**

Number of peaks found: 0                      Corr. Area 1: 102.2  
 Noise: 0.6

**Peak table for sample 8 : Flypoop 2**

Peak	Size [bp]	Conc. [pg/μl]	Molarity [pmol/l]	Observations
1	35	125.00	5,411.3	Lower Marker
2	10,380	75.00	10.9	Upper Marker

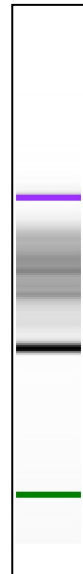
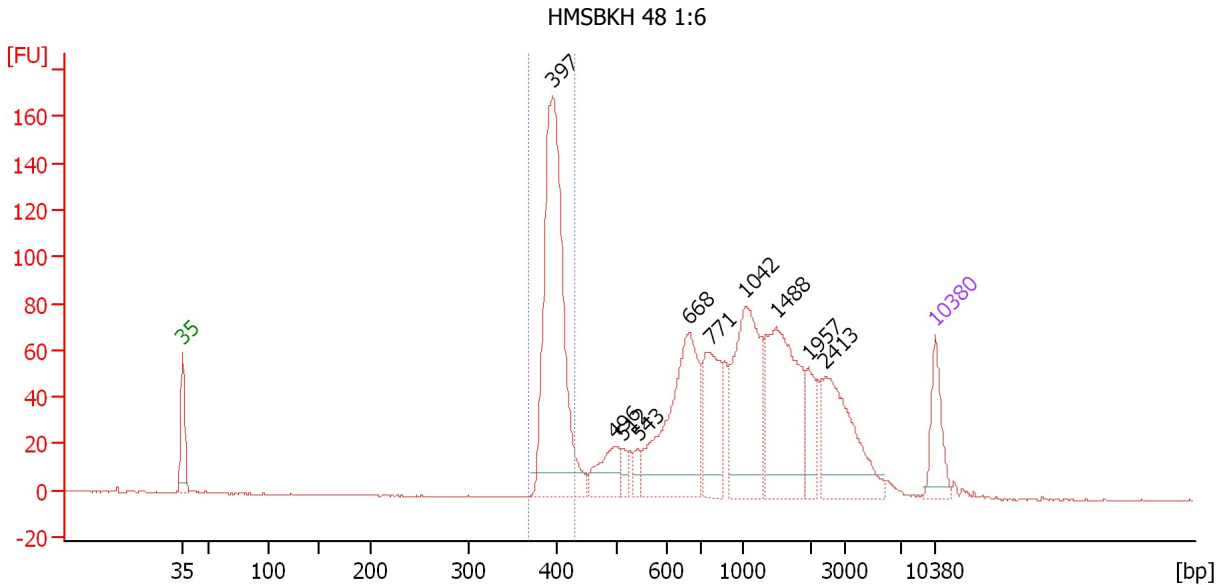
**Region table for sample 8 : Flypoop 2**

From [bp]	To [bp]	Average Size [bp]	Molarity [pmol/l]	Conc. [pg/μl]	Corr. Area	% of Total	Size distribution in CV [%]	Color
325	711	501	337.7	106.00	102.2	87	18.8	Blue

Assay Class: High Sensitivity DNA Assay  
 Data Path: C:\...ents and Settings\Bioanalyzer\2013-08-21\2013-08-21\_003.xad

Created: 8/21/2013 1:53:28 PM  
 Modified: 8/21/2013 2:44:14 PM

**Electropherogram Summary Continued ...**



**Setpoint Deviations for sample 9 : HMSBKH 48 1:6**

Height Threshold [FU] : 10

**Overall Results for sample 9 : HMSBKH 48 1:6**

Number of peaks found: 10      Corr. Area 1: 437.3  
 Noise: 0.1

**Peak table for sample 9 : HMSBKH 48 1:6**

Peak	Size [bp]	Conc. [pg/μl]	Molarity [pmol/l]	Observations
1	35	125.00	5,411.3	Lower Marker
2	397	715.82	2,734.6	
3	496	92.07	281.2	
4	512	23.46	69.4	
5	543	27.40	76.4	
6	668	385.00	873.4	
7	771	174.49	342.8	
8	1,042	303.75	441.8	
9	1,488	310.87	316.6	
10	1,957	59.97	46.4	
11	2,413	204.83	128.6	
12	10,380	75.00	10.9	Upper Marker

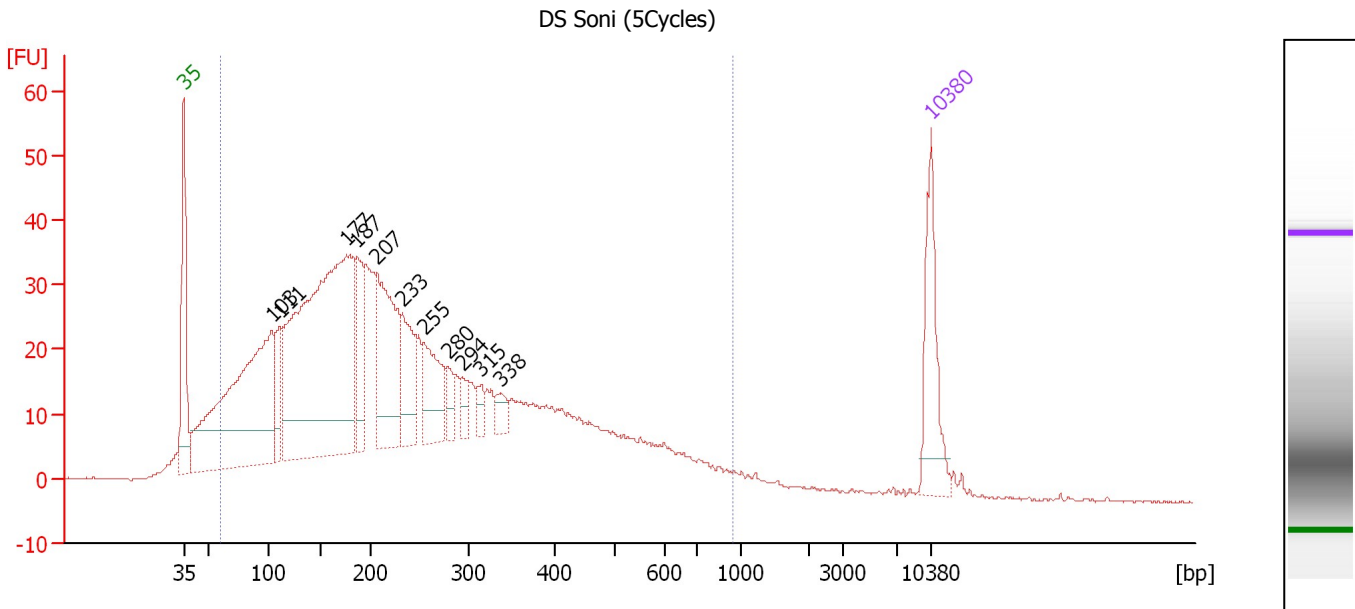
**Region table for sample 9 : HMSBKH 48 1:6**

From [bp]	To [bp]	Average Size [bp]	Molarity [pmol/l]	Conc. [pg/μl]	Corr. Area	% of Total	Size distribution in CV [%]	Color
370	430	399	2,573.7	677.40	437.3	25	2.7	Blue

Assay Class: High Sensitivity DNA Assay  
 Data Path: C:\...ents and Settings\Bioanalyzer\2013-08-21\2013-08-21\_003.xad

Created: 8/21/2013 1:53:28 PM  
 Modified: 8/21/2013 2:44:14 PM

**Electropherogram Summary Continued ...**



**Overall Results for sample 10 : DS Soni (5Cycles)**

Number of peaks found: 11                      Corr. Area 1: 1,312.5  
 Noise: 0.1

**Peak table for sample 10 : DS Soni (5Cycles)**

Peak	Size [bp]	Conc. [pg/μl]	Molarity [pmol/l]	Observations
1	35	125.00	5,411.3	Lower Marker
2	103	524.70	7,705.9	
3	111	67.47	921.1	
4	177	712.47	6,092.0	
5	187	87.55	708.3	
6	207	203.01	1,485.2	
7	233	93.90	611.7	
8	255	94.45	560.5	
9	280	24.97	135.2	
10	294	17.81	91.7	
11	315	17.29	83.1	
12	338	19.82	88.8	
13	10,380	75.00	10.9	Upper Marker

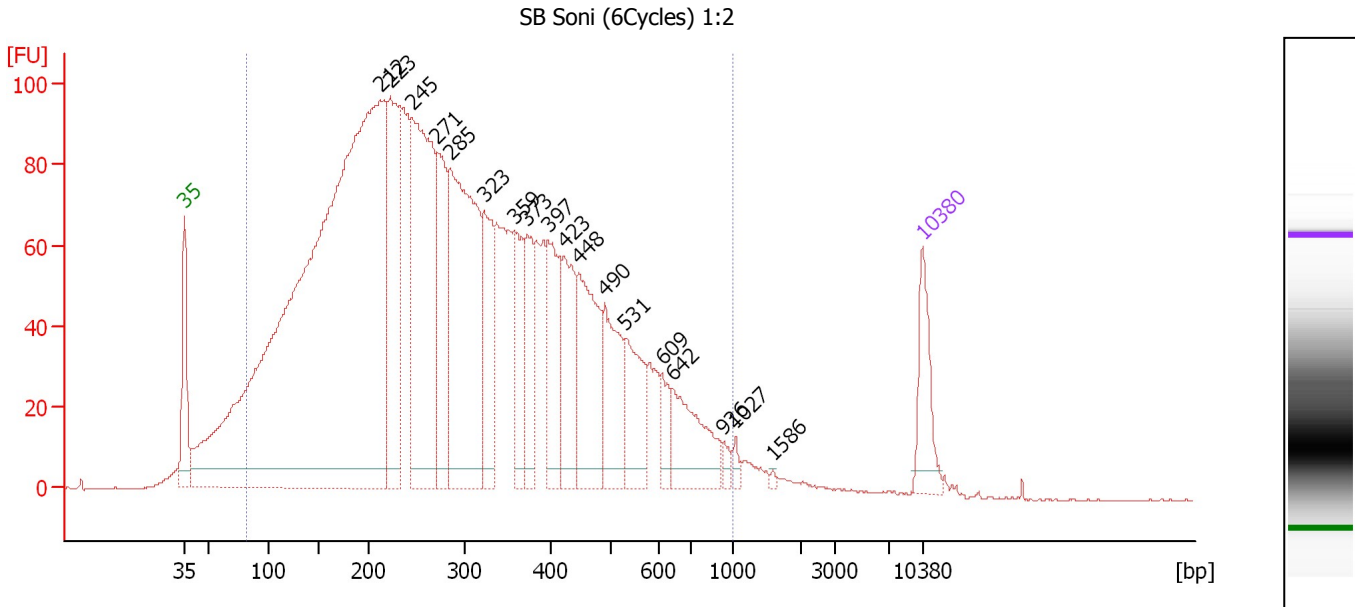
**Region table for sample 10 : DS Soni (5Cycles)**

From [bp]	To [bp]	Average Size [bp]	Molarity [pmol/l]	Conc. [pg/μl]	Corr. Area	% of Total	Size distribution in CV [%]	Color
60	943	257	27,710.1	3,004.56	1,312.5	92	59.3	Blue

Assay Class: High Sensitivity DNA Assay  
 Data Path: C:\...ents and Settings\Bioanalyzer\2013-08-21\2013-08-21\_003.xad

Created: 8/21/2013 1:53:28 PM  
 Modified: 8/21/2013 2:44:14 PM

**Electropherogram Summary Continued ...**



**Overall Results for sample 11 : SB Soni (6Cycles) 1:2**

Number of peaks found: 18      Corr. Area 1: 3,862.7  
 Noise: 0.2

**Peak table for sample 11 : SB Soni (6Cycles) 1:2**

Peak	Size [bp]	Conc. [pg/μl]	Molarity [pmol/l]	Observations
1	35	125.00	5,411.3	Lower Marker
2	212	2,856.30	20,375.6	
3	223	352.00	2,393.5	
4	245	586.00	3,619.0	
5	271	233.19	1,303.0	
6	285	610.94	3,249.4	
7	323	185.50	870.6	
8	359	124.70	527.0	
9	373	119.56	485.7	
10	397	169.11	644.8	
11	423	154.51	553.5	
12	448	218.30	738.7	
13	490	160.36	495.5	
14	531	126.83	362.2	
15	609	41.09	102.3	
16	642	138.23	326.4	
17	926	12.95	21.2	
18	1,027	11.46	16.9	
19	1,586	3.13	3.0	
20	10,380	75.00	10.9	Upper Marker

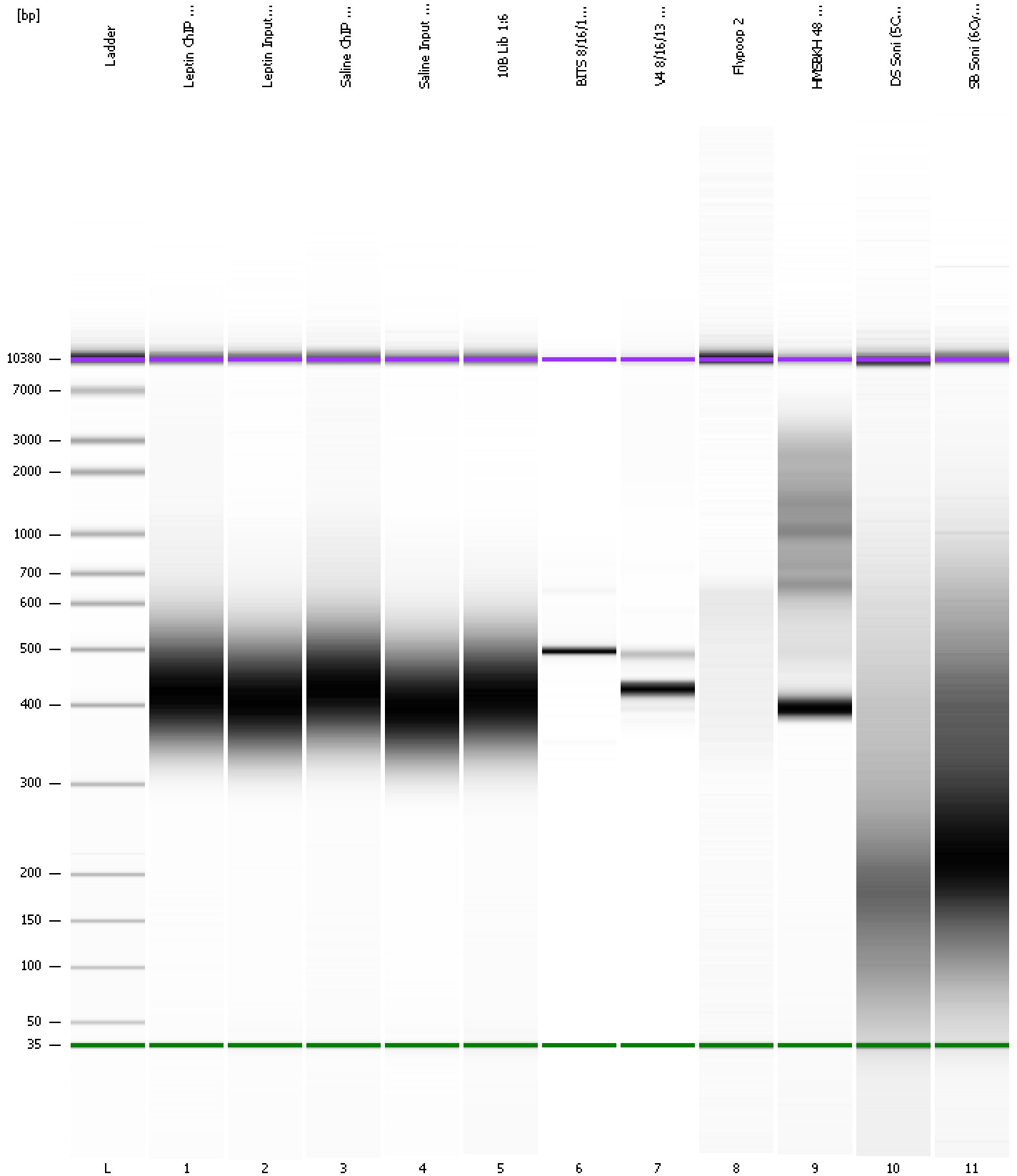
**Region table for sample 11 : SB Soni (6Cycles) 1:2**

From [bp]	To [bp]	Average Size [bp]	Molarity [pmol/l]	Conc. [pg/μl]	Corr. Area	% of Total	Size distribution in CV [%]	Color
81	1,000	310	50,157.0	7,166.81	3,862.7	94	50.3	Blue

Assay Class: High Sensitivity DNA Assay  
Data Path: C:\...ents and Settings\Bioanalyzer\2013-08-21\2013-08-21\_003.xad

Created: 8/21/2013 1:53:28 PM  
Modified: 8/21/2013 2:44:14 PM

**Gel Image**





Assay Class: High Sensitivity DNA Assay  
 Data Path: C:\...ents and Settings\Bioanalyzer\2013-08-21\2013-08-21\_003.xad

Created: 8/21/2013 1:53:28 PM  
 Modified: 8/21/2013 2:44:14 PM

**Run Logbook**

Description	Number	Source	Category	Sub Category	Time	Time Zone	User	Host
Run ended on port 1 (Number of wells acquired: 12)		Instrument	Run		8/21/2013 2:34:47 PM	(GMT --07:00) Pacific Standard Time	UC Davis	D8XSMGH1
Run started on port 1 (File: C:\Documents and Settings\Bioanalyzer\2013-08-21\2013-08-21_003.xad)		Instrument	Run		8/21/2013 1:53:34 PM	(GMT --07:00) Pacific Standard Time	UC Davis	D8XSMGH1
Product Number : G2938B		Instrument	Run		8/21/2013 1:53:34 PM	(GMT --07:00) Pacific Standard Time	UC Davis	D8XSMGH1
Name :		Instrument	Run		8/21/2013 1:53:34 PM	(GMT --07:00) Pacific Standard Time	UC Davis	D8XSMGH1
Vendor : Agilent Technologies		Instrument	Run		8/21/2013 1:53:34 PM	(GMT --07:00) Pacific Standard Time	UC Davis	D8XSMGH1
Serial# : DE13701086		Instrument	Run		8/21/2013 1:53:34 PM	(GMT --07:00) Pacific Standard Time	UC Davis	D8XSMGH1
Firmware : C.01.069		Instrument	Run		8/21/2013 1:53:34 PM	(GMT --07:00) Pacific Standard Time	UC Davis	D8XSMGH1
Cartridge : Electrode		Instrument	Run		8/21/2013 1:53:34 PM	(GMT --07:00) Pacific Standard Time	UC Davis	D8XSMGH1