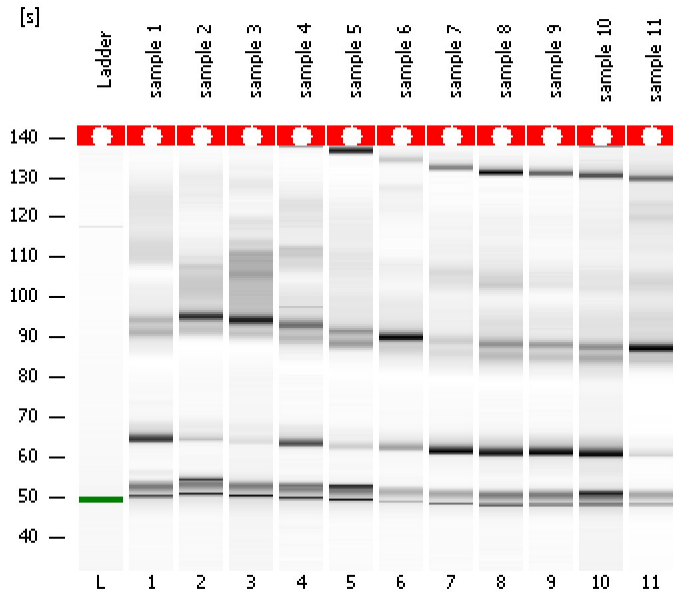


Assay Class: High Sensitivity DNA Assay
Data Path: C:\...ents and Settings\Bioanalyzer\2013-08-21\2013-08-21_005.xad

Created: 8/21/2013 4:23:50 PM
Modified: 8/21/2013 5:04:20 PM

Electrophoresis File Run Summary



Instrument Information:

Instrument Name: DE13701086 Firmware: C.01.069
Serial#: DE13701086 Type: G2938B

Assay Information:

Assay Origin Path: C:\Program Files\Agilent\2100 bioanalyzer\2100 expert\assays\dsDNA\High Sensitivity DNA.xsy
Assay Class: High Sensitivity DNA Assay
Version: 1.03
Assay Comments: Copyright © 2003-2010 Agilent Technologies

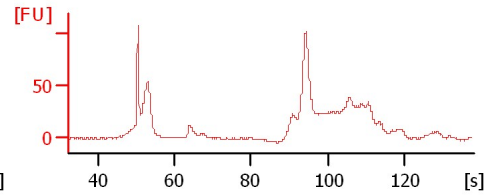
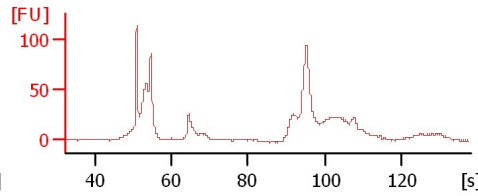
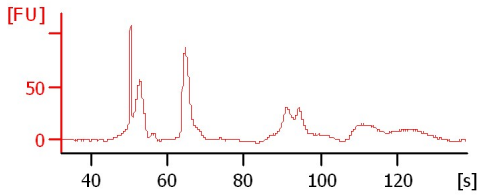
Chip Information:

Chip Lot #: Reagent Kit Lot #: Chip Comments:

sample 1

sample 2

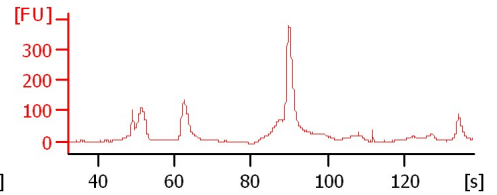
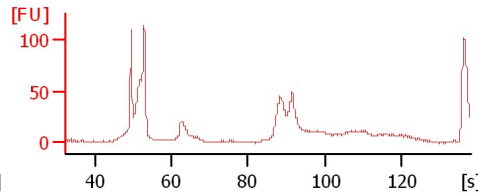
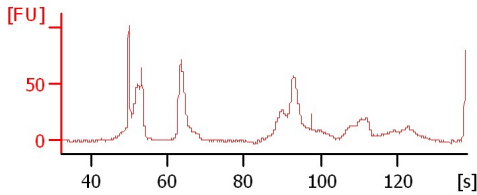
sample 3



sample 4

sample 5

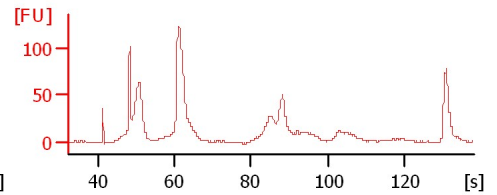
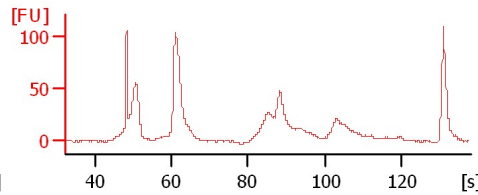
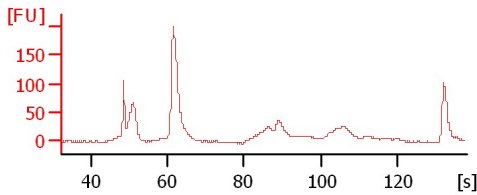
sample 6



sample 7

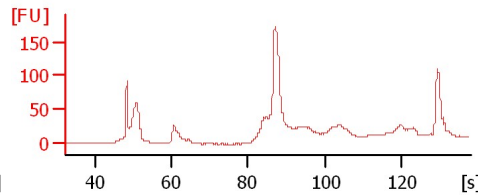
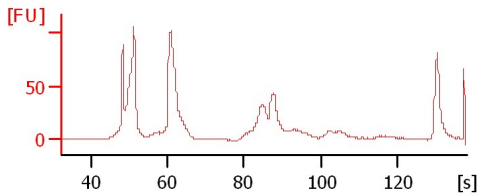
sample 8

sample 9



sample 10

sample 11



Assay Class: High Sensitivity DNA Assay
Data Path: C:\...ents and Settings\Bioanalyzer\2013-08-21\2013-08-21_005.xad

Created: 8/21/2013 4:23:50 PM
Modified: 8/21/2013 5:04:20 PM

Electrophoresis File Run Summary (Chip Summary)

Sample Name	Sample Comment	Rest. Digest	Status	Observation	Result Label	Result Color
sample 1		<input type="checkbox"/>	✓			
sample 2		<input type="checkbox"/>	✓			
sample 3		<input type="checkbox"/>	✓			
sample 4		<input type="checkbox"/>	✓			
sample 5		<input type="checkbox"/>	✓			
sample 6		<input type="checkbox"/>	✓			
sample 7		<input type="checkbox"/>	✓			
sample 8		<input type="checkbox"/>	✓			
sample 9		<input type="checkbox"/>	✓			
sample 10		<input type="checkbox"/>	✓			
sample 11		<input type="checkbox"/>	✓			
Ladder		<input type="checkbox"/>	✓			

Chip Lot #

Reagent Kit Lot #

Chip Comments :

Assay Class: High Sensitivity DNA Assay
Data Path: C:\...ents and Settings\Bioanalyzer\2013-08-21\2013-08-21_005.xad

Created: 8/21/2013 4:23:50 PM
Modified: 8/21/2013 5:04:20 PM

Electrophoresis Assay Details

General Analysis Settings

Number of Available Sample and Ladder Wells (Max.) : 12
Minimum Visible Range [s] : 32
Maximum Visible Range [s] : 138
Start Analysis Time Range [s] : 33
End Analysis Time Range [s] : 137.5
Ladder Concentration [pg/μl] : 1950
Uses Standard Area for Ladder Fragments
Lower Marker Concentration [pg/μl] : 125
Upper Marker Concentration [pg/μl] : 75
Used Upper Marker for Quantitation
Standard Curve Fit is Point to Point
Show Data Aligned to Lower and Upper Marker

Integrator Settings

Integration Start Time [s] : 33.05
Integration End Time [s] : 137
Slope Threshold : 0.8
Height Threshold [FU] : 5
Area Threshold : 0.1
Width Threshold [s] : 0.6
Baseline Plateau [s] : 0.5

Filter Settings

Filter Width [s] : 0.5
Polynomial Order : 4

Ladder

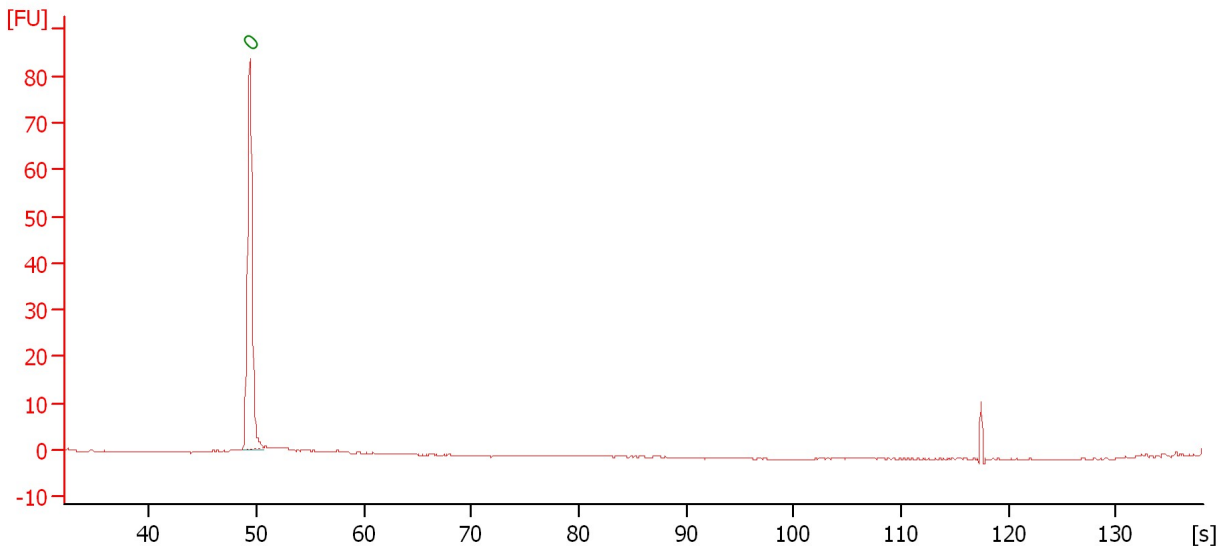
Ladder Peak	Size	Area
1	35	160
2	50	210
3	100	208
4	150	221
5	200	242
6	300	270
7	400	305
8	500	306
9	600	336
10	700	321
11	1000	366
12	2000	413
13	3000	411
14	7000	400
15	10380	214

Assay Class: High Sensitivity DNA Assay
Data Path: C:\...ents and Settings\Bioanalyzer\2013-08-21\2013-08-21_005.xad

Created: 8/21/2013 4:23:50 PM
Modified: 8/21/2013 5:04:20 PM

Electropherogram Summary

Ladder



Overall Results for Ladder

Noise: 0.2

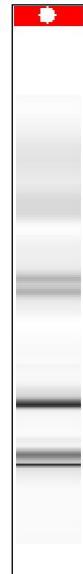
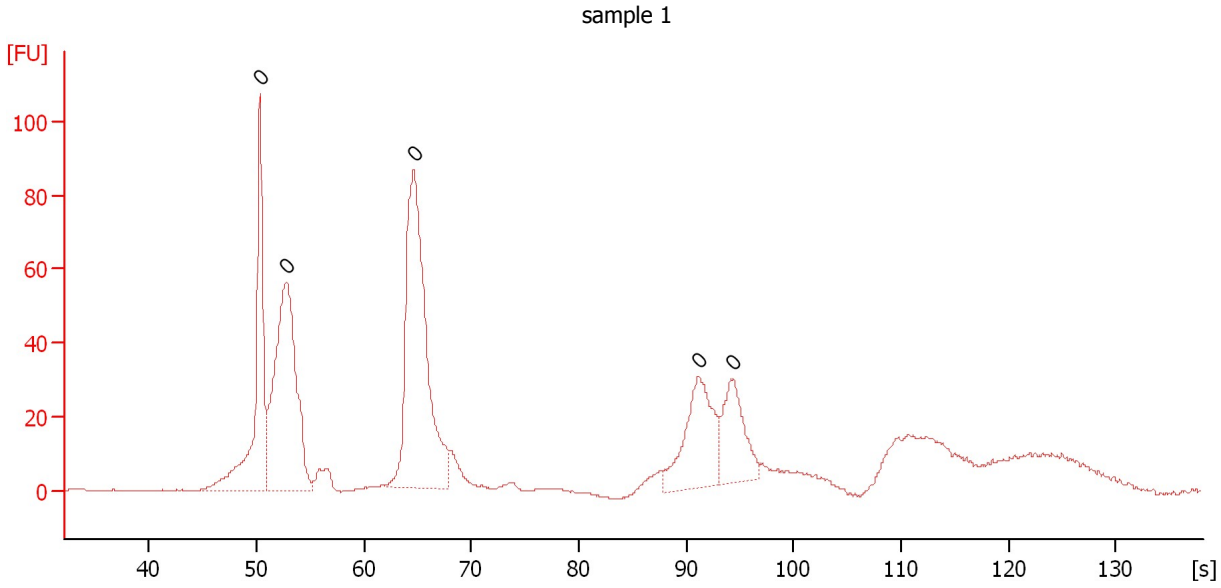
Peak table for Ladder

Peak	Size [bp]	Conc. [pg/μl]	Molarity [pmol/l]	Observations
1	0	0.00	0.0	Lower Marker

Assay Class: High Sensitivity DNA Assay
Data Path: C:\...ents and Settings\Bioanalyzer\2013-08-21\2013-08-21_005.xad

Created: 8/21/2013 4:23:50 PM
Modified: 8/21/2013 5:04:20 PM

Electropherogram Summary Continued ...



Setpoint Deviations for sample 1 : sample 1

Height Threshold [FU] : 20

Overall Results for sample 1 : sample 1

Number of peaks found: 0 Noise: 0.2

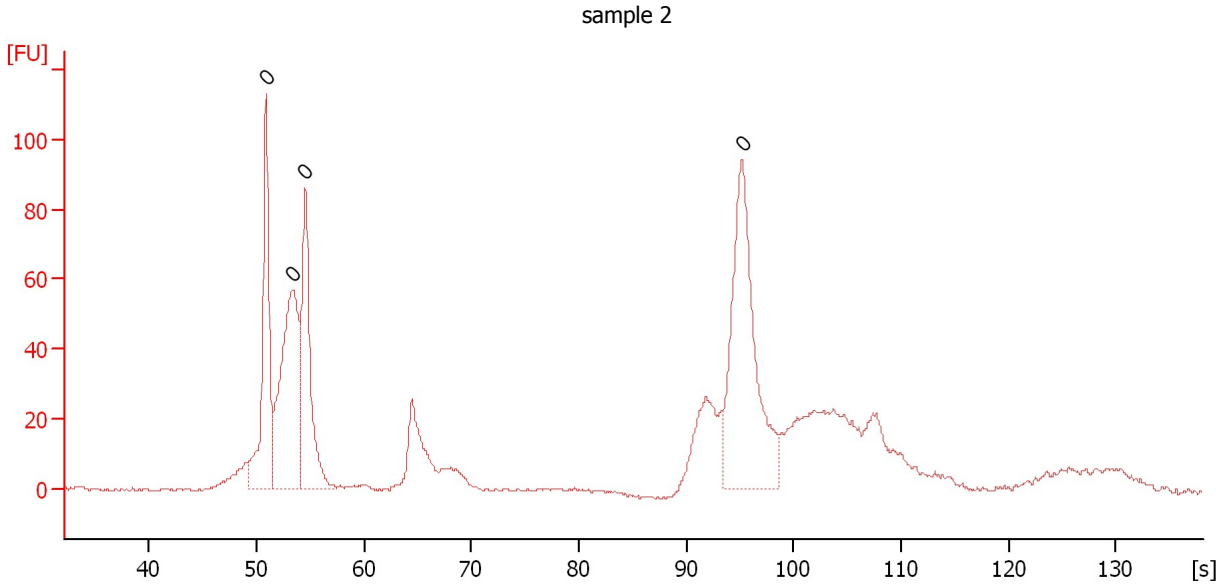
Peak table for sample 1 : sample 1

Peak	Size [bp]	Conc. [pg/μl]	Molarity [pmol/l]	Observations
1	0	0.00	0.0	
2	0	0.00	0.0	
3	0	0.00	0.0	
4	0	0.00	0.0	
5	0	0.00	0.0	

Assay Class: High Sensitivity DNA Assay
Data Path: C:\...ents and Settings\Bioanalyzer\2013-08-21\2013-08-21_005.xad

Created: 8/21/2013 4:23:50 PM
Modified: 8/21/2013 5:04:20 PM

Electropherogram Summary Continued ...



Setpoint Deviations for sample 2 : sample 2

Height Threshold [FU] : 30

Overall Results for sample 2 : sample 2

Number of peaks found: 0 Noise: 0.5

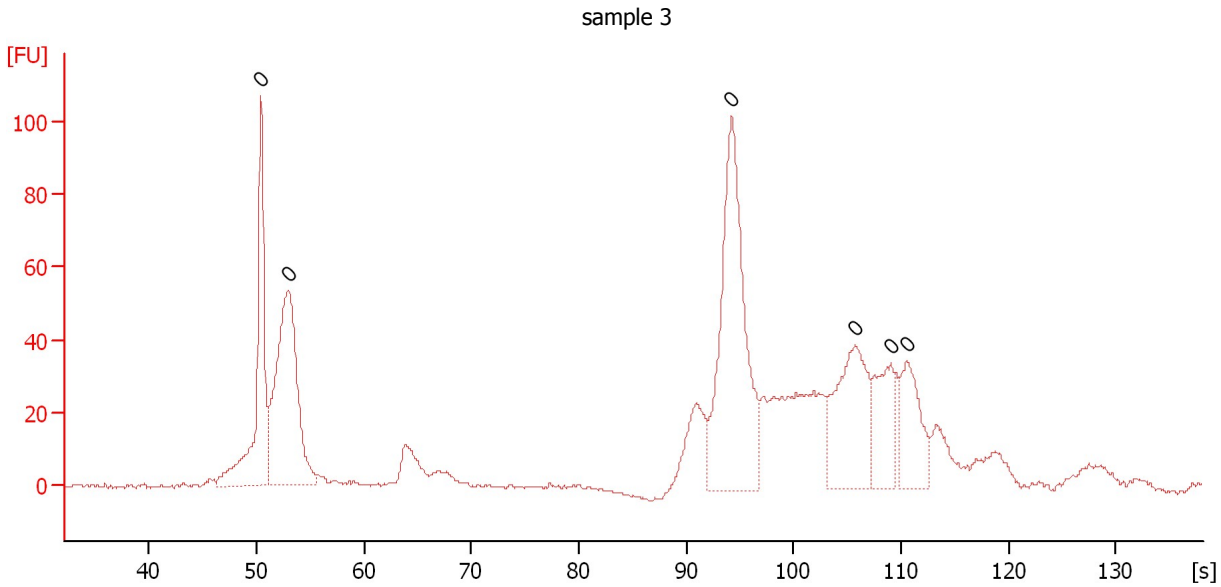
Peak table for sample 2 : sample 2

Peak	Size [bp]	Conc. [pg/μl]	Molarity [pmol/l]	Observations
1	0	0.00	0.0	
2	0	0.00	0.0	
3	0	0.00	0.0	
4	0	0.00	0.0	

Assay Class: High Sensitivity DNA Assay
Data Path: C:\...ents and Settings\Bioanalyzer\2013-08-21\2013-08-21_005.xad

Created: 8/21/2013 4:23:50 PM
Modified: 8/21/2013 5:04:20 PM

Electropherogram Summary Continued ...



Setpoint Deviations for sample 3 : sample 3

Height Threshold [FU] : 30

Overall Results for sample 3 : sample 3

Number of peaks found: 0 Noise: 0.4

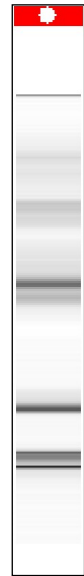
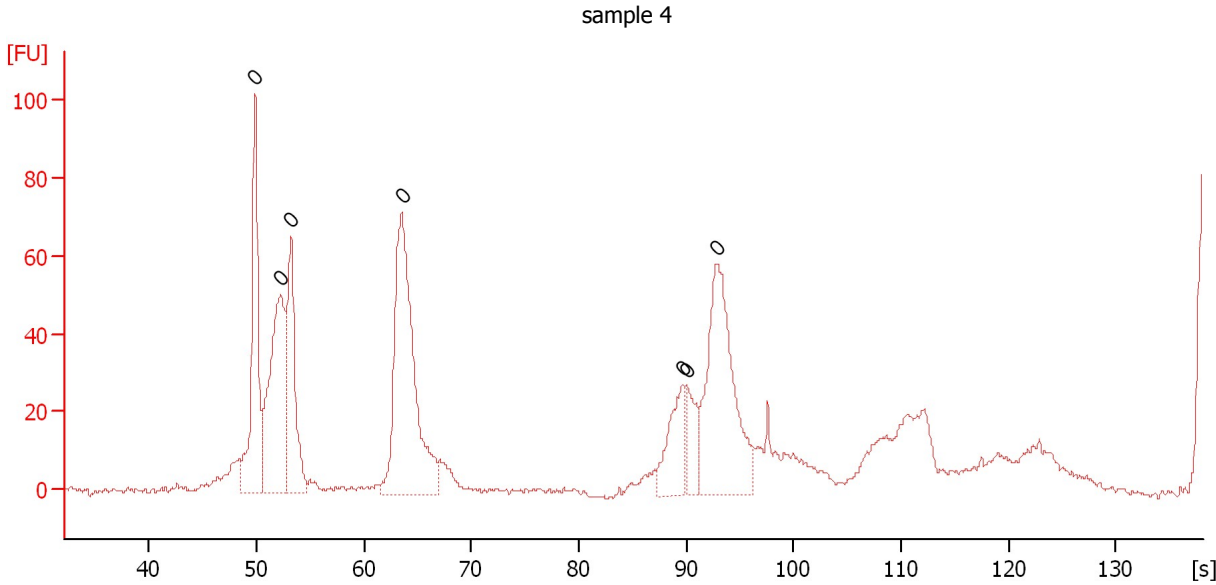
Peak table for sample 3 : sample 3

Peak	Size [bp]	Conc. [pg/μl]	Molarity [pmol/l]	Observations
1	0	0.00	0.0	
2	0	0.00	0.0	
3	0	0.00	0.0	
4	0	0.00	0.0	
5	0	0.00	0.0	
6	0	0.00	0.0	

Assay Class: High Sensitivity DNA Assay
Data Path: C:\...ents and Settings\Bioanalyzer\2013-08-21\2013-08-21_005.xad

Created: 8/21/2013 4:23:50 PM
Modified: 8/21/2013 5:04:20 PM

Electropherogram Summary Continued ...



Setpoint Deviations for sample 4 : sample 4

Height Threshold [FU] : 25

Overall Results for sample 4 : sample 4

Number of peaks found: 0 Noise: 0.7

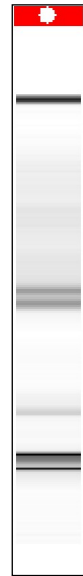
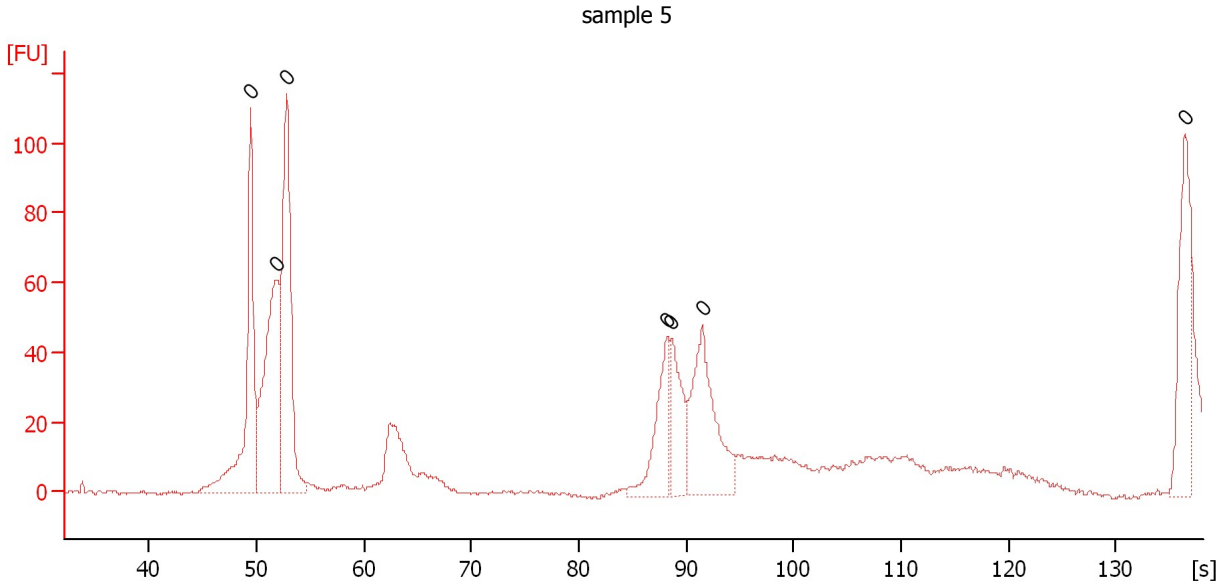
Peak table for sample 4 : sample 4

Peak	Size [bp]	Conc. [pg/μl]	Molarity [pmol/l]	Observations
1	0	0.00	0.0	
2	0	0.00	0.0	
3	0	0.00	0.0	
4	0	0.00	0.0	
5	0	0.00	0.0	
6	0	0.00	0.0	
7	0	0.00	0.0	

Assay Class: High Sensitivity DNA Assay
Data Path: C:\...ents and Settings\Bioanalyzer\2013-08-21\2013-08-21_005.xad

Created: 8/21/2013 4:23:50 PM
Modified: 8/21/2013 5:04:20 PM

Electropherogram Summary Continued ...



Setpoint Deviations for sample 5 : sample 5

Height Threshold [FU] : 25

Overall Results for sample 5 : sample 5

Number of peaks found: 0 Noise: 0.5

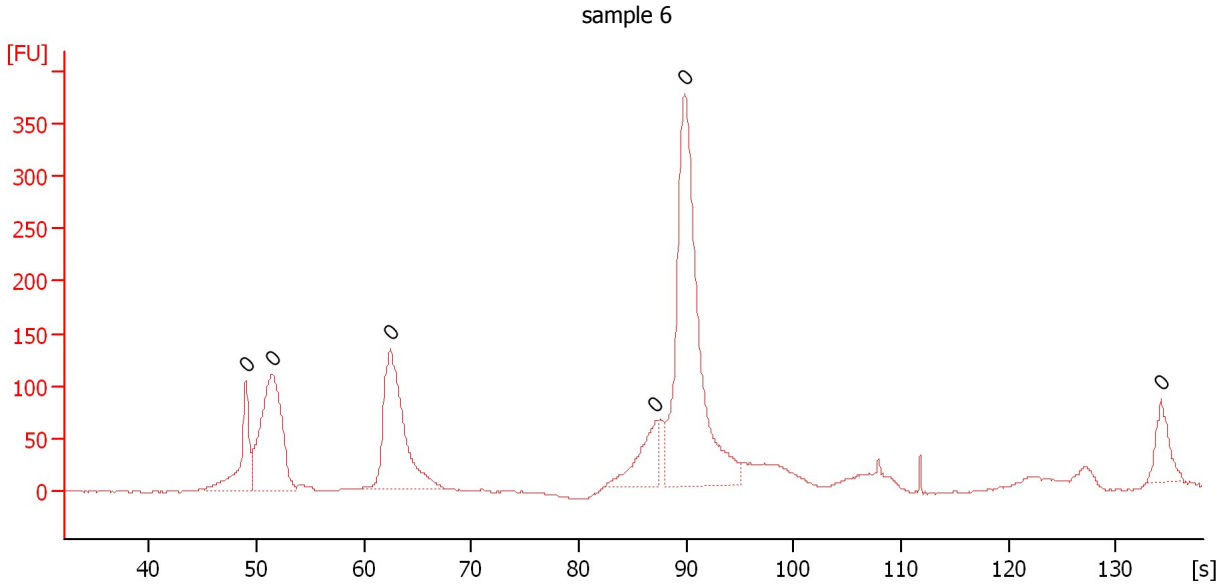
Peak table for sample 5 : sample 5

Peak	Size [bp]	Conc. [pg/μl]	Molarity [pmol/l]	Observations
1	0	0.00	0.0	
2	0	0.00	0.0	
3	0	0.00	0.0	
4	0	0.00	0.0	
5	0	0.00	0.0	
6	0	0.00	0.0	
7	0	0.00	0.0	

Assay Class: High Sensitivity DNA Assay
Data Path: C:\...ents and Settings\Bioanalyzer\2013-08-21\2013-08-21_005.xad

Created: 8/21/2013 4:23:50 PM
Modified: 8/21/2013 5:04:20 PM

Electropherogram Summary Continued ...



Setpoint Deviations for sample 6 : sample 6

Height Threshold [FU] : 25

Overall Results for sample 6 : sample 6

Number of peaks found: 0 Noise: 0.5

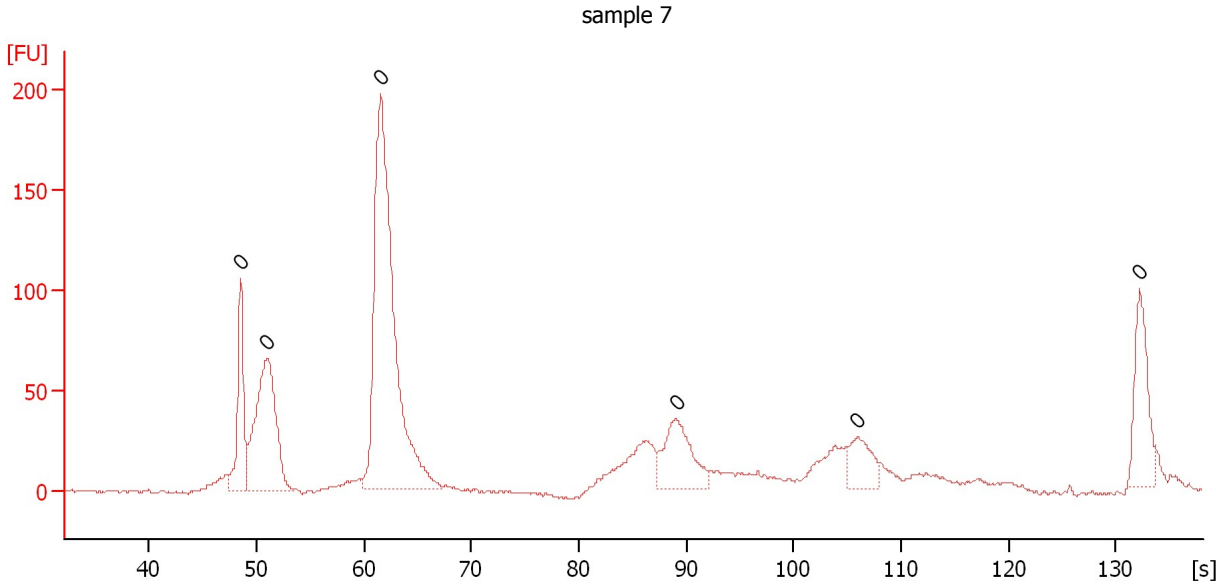
Peak table for sample 6 : sample 6

Peak	Size [bp]	Conc. [pg/μl]	Molarity [pmol/l]	Observations
1	0	0.00	0.0	
2	0	0.00	0.0	
3	0	0.00	0.0	
4	0	0.00	0.0	
5	0	0.00	0.0	
6	0	0.00	0.0	

Assay Class: High Sensitivity DNA Assay
Data Path: C:\...ents and Settings\Bioanalyzer\2013-08-21\2013-08-21_005.xad

Created: 8/21/2013 4:23:50 PM
Modified: 8/21/2013 5:04:20 PM

Electropherogram Summary Continued ...



Setpoint Deviations for sample 7 : sample 7

Height Threshold [FU] : 25

Overall Results for sample 7 : sample 7

Number of peaks found: 0 Noise: 0.7

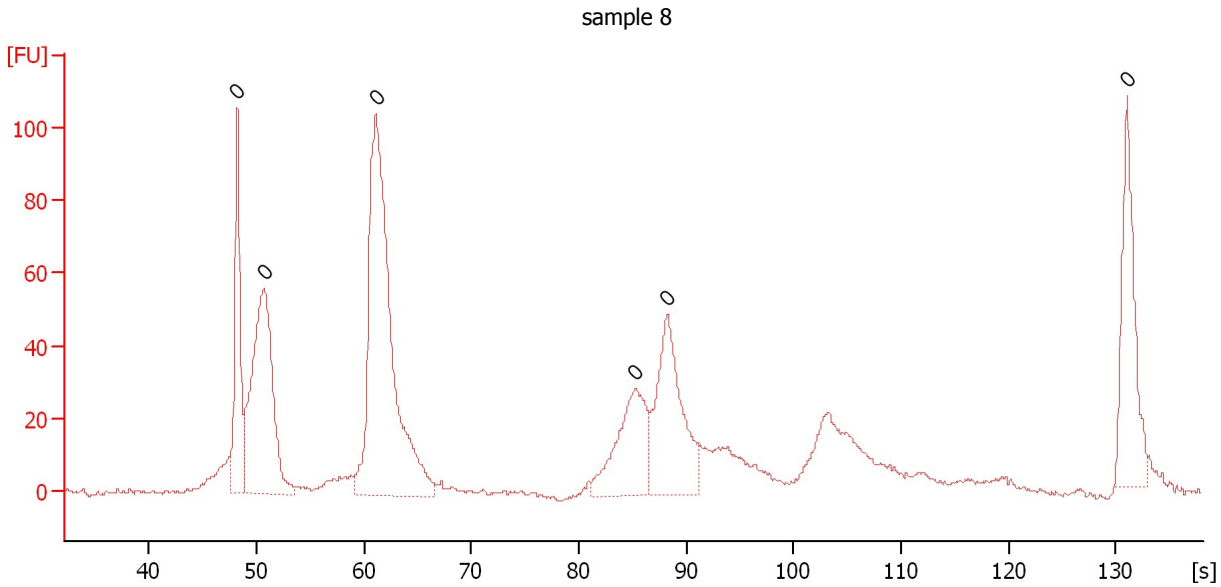
Peak table for sample 7 : sample 7

Peak	Size [bp]	Conc. [pg/ μ l]	Molarity [pmol/l]	Observations
1	0	0.00	0.0	
2	0	0.00	0.0	
3	0	0.00	0.0	
4	0	0.00	0.0	
5	0	0.00	0.0	
6	0	0.00	0.0	

Assay Class: High Sensitivity DNA Assay
Data Path: C:\...ents and Settings\Bioanalyzer\2013-08-21\2013-08-21_005.xad

Created: 8/21/2013 4:23:50 PM
Modified: 8/21/2013 5:04:20 PM

Electropherogram Summary Continued ...



Setpoint Deviations for sample 8 : sample 8

Height Threshold [FU] : 25

Overall Results for sample 8 : sample 8

Number of peaks found: 0 Noise: 0.6

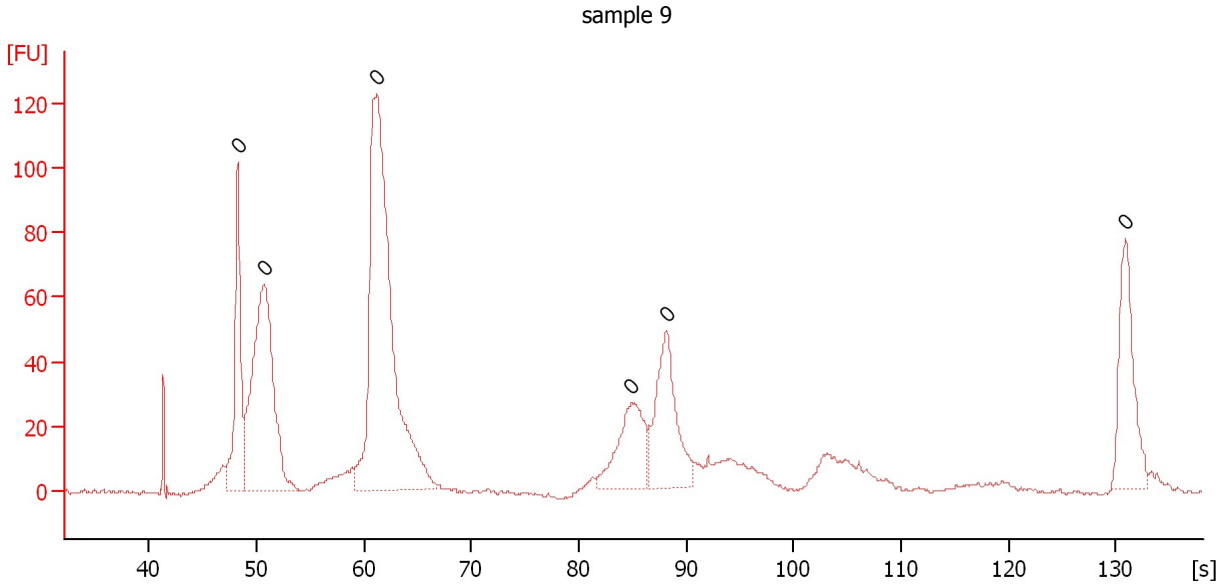
Peak table for sample 8 : sample 8

Peak	Size [bp]	Conc. [pg/μl]	Molarity [pmol/l]	Observations
1	0	0.00	0.0	
2	0	0.00	0.0	
3	0	0.00	0.0	
4	0	0.00	0.0	
5	0	0.00	0.0	
6	0	0.00	0.0	

Assay Class: High Sensitivity DNA Assay
Data Path: C:\...ents and Settings\Bioanalyzer\2013-08-21\2013-08-21_005.xad

Created: 8/21/2013 4:23:50 PM
Modified: 8/21/2013 5:04:20 PM

Electropherogram Summary Continued ...



Setpoint Deviations for sample 9 : sample 9

Height Threshold [FU] : 25

Overall Results for sample 9 : sample 9

Number of peaks found: 0 Noise: 0.6

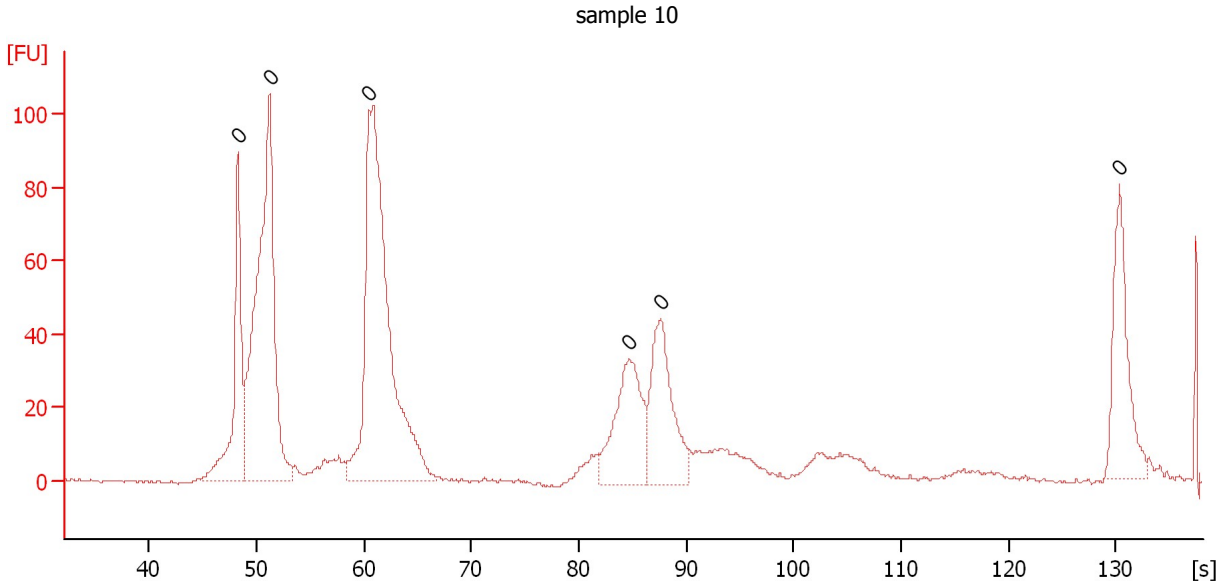
Peak table for sample 9 : sample 9

Peak	Size [bp]	Conc. [pg/μl]	Molarity [pmol/l]	Observations
1	0	0.00	0.0	
2	0	0.00	0.0	
3	0	0.00	0.0	
4	0	0.00	0.0	
5	0	0.00	0.0	
6	0	0.00	0.0	

Assay Class: High Sensitivity DNA Assay
Data Path: C:\...ents and Settings\Bioanalyzer\2013-08-21\2013-08-21_005.xad

Created: 8/21/2013 4:23:50 PM
Modified: 8/21/2013 5:04:20 PM

Electropherogram Summary Continued ...



Setpoint Deviations for sample 10 : sample 10

Height Threshold [FU] : 25

Overall Results for sample 10 : sample 10

Number of peaks found: 0 Noise: 0.5

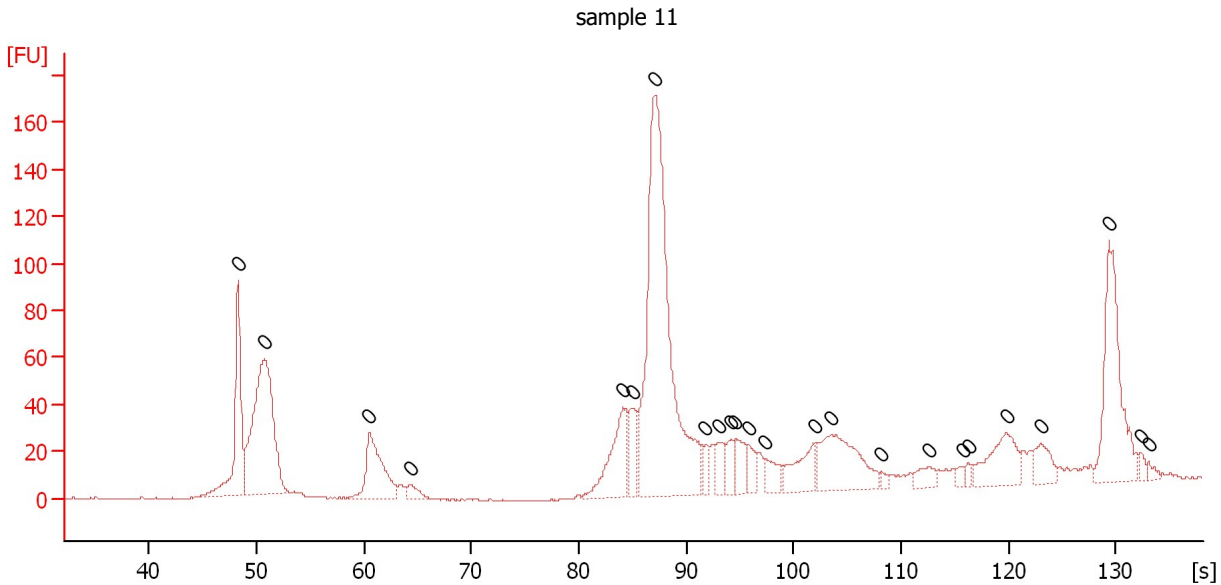
Peak table for sample 10 : sample 10

Peak	Size [bp]	Conc. [pg/ μ l]	Molarity [pmol/l]	Observations
1	0	0.00	0.0	
2	0	0.00	0.0	
3	0	0.00	0.0	
4	0	0.00	0.0	
5	0	0.00	0.0	
6	0	0.00	0.0	

Assay Class: High Sensitivity DNA Assay
 Data Path: C:\...ents and Settings\Bioanalyzer\2013-08-21\2013-08-21_005.xad

Created: 8/21/2013 4:23:50 PM
 Modified: 8/21/2013 5:04:20 PM

Electropherogram Summary Continued ...



Overall Results for sample 11 : sample 11

Number of peaks found: 0 Noise: 0.4

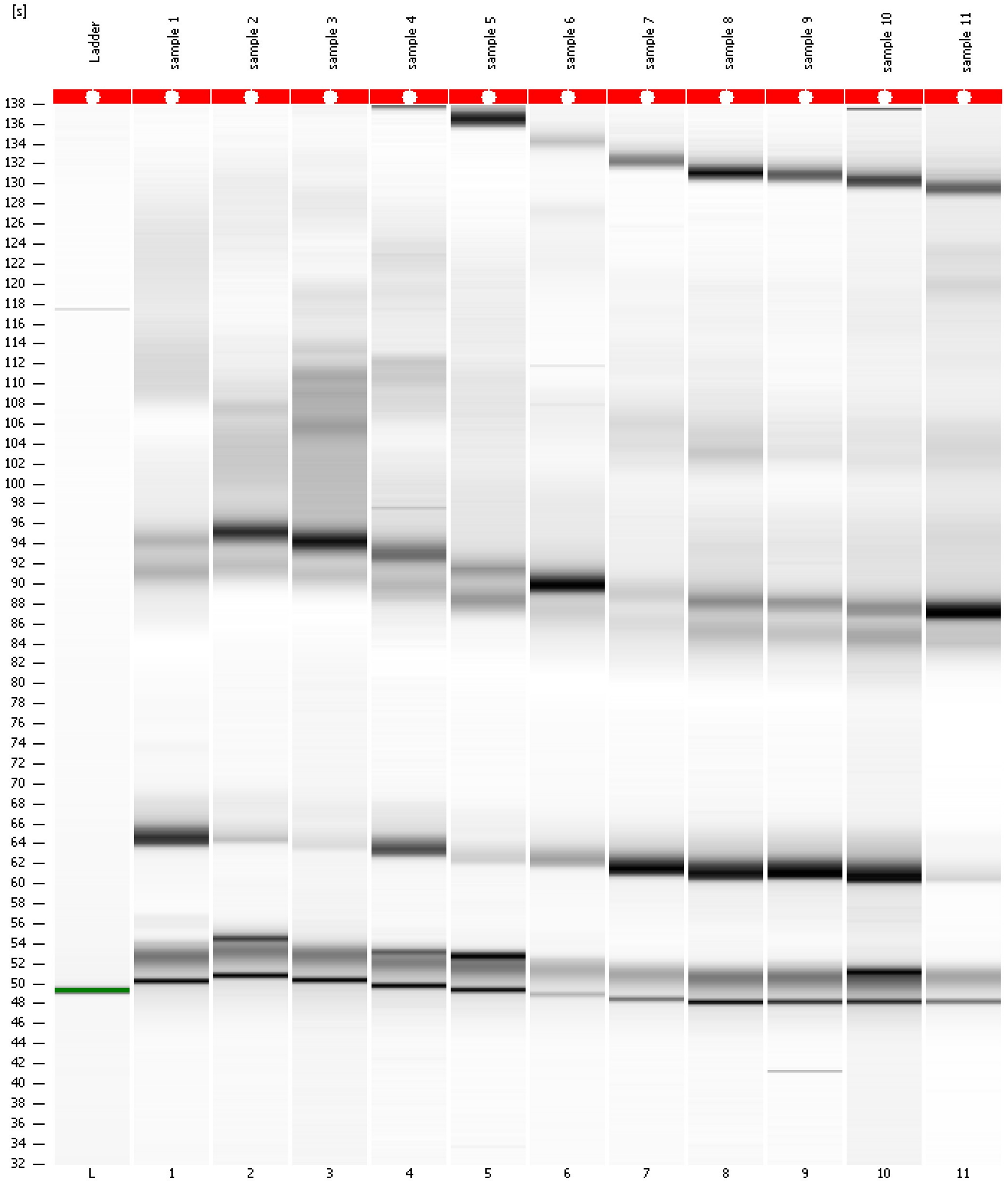
Peak table for sample 11 : sample 11

Peak	Size [bp]	Conc. [pg/μl]	Molarity [pmol/l]	Observations
1	0	0.00	0.0	
2	0	0.00	0.0	
3	0	0.00	0.0	
4	0	0.00	0.0	
5	0	0.00	0.0	
6	0	0.00	0.0	
7	0	0.00	0.0	
8	0	0.00	0.0	
9	0	0.00	0.0	
10	0	0.00	0.0	
11	0	0.00	0.0	
12	0	0.00	0.0	
13	0	0.00	0.0	
14	0	0.00	0.0	
15	0	0.00	0.0	
16	0	0.00	0.0	
17	0	0.00	0.0	
18	0	0.00	0.0	
19	0	0.00	0.0	
20	0	0.00	0.0	
21	0	0.00	0.0	
22	0	0.00	0.0	
23	0	0.00	0.0	
24	0	0.00	0.0	

Assay Class: High Sensitivity DNA Assay
Data Path: C:\...ents and Settings\Bioanalyzer\2013-08-21\2013-08-21_005.xad

Created: 8/21/2013 4:23:50 PM
Modified: 8/21/2013 5:04:20 PM

Gel Image



Assay Class: High Sensitivity DNA Assay
 Data Path: C:\...ents and Settings\Bioanalyzer\2013-08-21\2013-08-21_005.xad

Created: 8/21/2013 4:23:50 PM
 Modified: 8/21/2013 5:04:20 PM

Run Logbook

Description	Number	Source	Category	Sub Category	Time	Time Zone	User	Host
Run ended on port 1 (Number of wells acquired: 12)		Instrument	Run		8/21/2013 5:04:16 PM	(GMT --07:00) Pacific Standard Time	UC Davis	D8XSMGH1
Run started on port 1 (File: C:\Documents and Settings\Bioanalyzer\2013-08-21\2013-08-21_005.xad)		Instrument	Run		8/21/2013 4:23:55 PM	(GMT --07:00) Pacific Standard Time	UC Davis	D8XSMGH1
Product Number : G2938B		Instrument	Run		8/21/2013 4:23:55 PM	(GMT --07:00) Pacific Standard Time	UC Davis	D8XSMGH1
Name :		Instrument	Run		8/21/2013 4:23:55 PM	(GMT --07:00) Pacific Standard Time	UC Davis	D8XSMGH1
Vendor : Agilent Technologies		Instrument	Run		8/21/2013 4:23:55 PM	(GMT --07:00) Pacific Standard Time	UC Davis	D8XSMGH1
Serial# : DE13701086		Instrument	Run		8/21/2013 4:23:55 PM	(GMT --07:00) Pacific Standard Time	UC Davis	D8XSMGH1
Firmware : C.01.069		Instrument	Run		8/21/2013 4:23:55 PM	(GMT --07:00) Pacific Standard Time	UC Davis	D8XSMGH1
Cartridge : Electrode		Instrument	Run		8/21/2013 4:23:55 PM	(GMT --07:00) Pacific Standard Time	UC Davis	D8XSMGH1