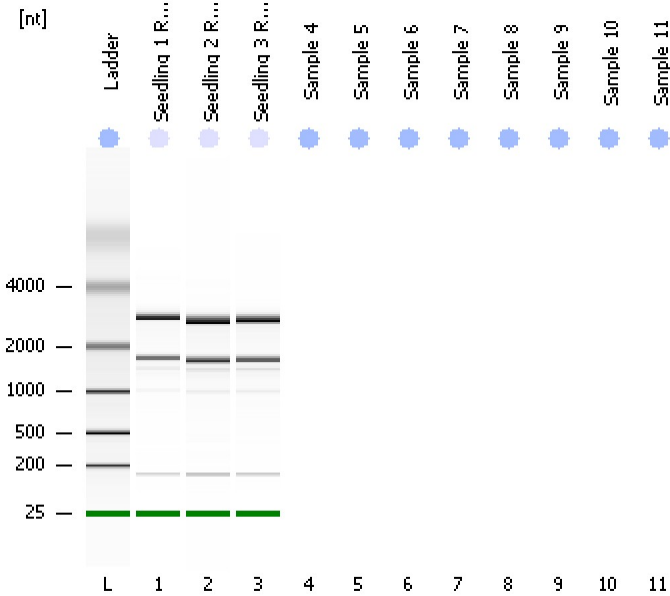


Assay Class: Eukaryote Total RNA Pico
Data Path: C:\...ents and Settings\Bioanalyzer\2013-08-22\2013-08-22_005.xad

Created: 8/22/2013 3:29:57 PM
Modified: 8/22/2013 3:43:20 PM

Electrophoresis File Run Summary



Instrument Information:

Instrument Name: DE13701086 Firmware: C.01.069
Serial#: DE13701086 Type: G2938B

Assay Information:

Assay Origin Path: C:\Program Files\Agilent\2100 bioanalyzer\2100 expert\assays\RNA\Eukaryote Total RNA Pico Series II.xsy

Assay Class: Eukaryote Total RNA Pico

Version: 2.6

Assay Comments: Total RNA Analysis pg sensitivity (Eukaryote)

© Copyright 2003 - 2009 Agilent Technologies, Inc.

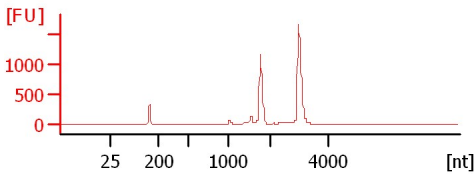
Chip Information:

Chip Lot #:

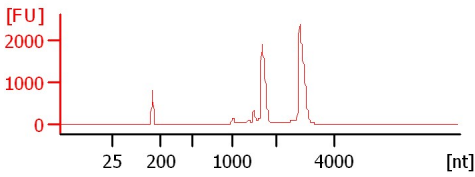
Reagent Kit Lot #:

Chip Comments:

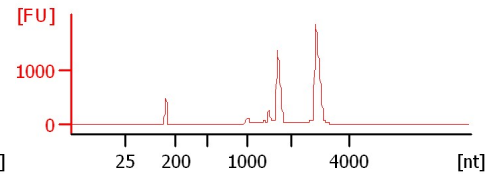
Seedling 1 RNA
RIN: 9.70



Seedling 2 RNA
RIN: 9.50



Seedling 3 RNA
RIN: 9.40



Assay Class: Eukaryote Total RNA Pico
 Data Path: C:\...ents and Settings\Bioanalyzer\2013-08-22\2013-08-22_005.xad

Created: 8/22/2013 3:29:57 PM
 Modified: 8/22/2013 3:43:20 PM

Electrophoresis File Run Summary (Chip Summary)

Sample Name	Sample Comment	Status	Result Label	Result Color
Seedling 1 RNA		✓	RIN: 9.70	
Seedling 2 RNA		✓	RIN: 9.50	
Seedling 3 RNA		✓	RIN: 9.40	
Sample 4				
Sample 5				
Sample 6				
Sample 7				
Sample 8				
Sample 9				
Sample 10				
Sample 11				
Ladder		✓	All Other Samples	

Chip Lot #

Reagent Kit Lot #

Chip Comments :

Assay Class: Eukaryote Total RNA Pico
Data Path: C:\...ents and Settings\Bioanalyzer\2013-08-22\2013-08-22_005.xad

Created: 8/22/2013 3:29:57 PM
Modified: 8/22/2013 3:43:20 PM

Electrophoresis Assay Details

General Analysis Settings

Number of Available Sample and Ladder Wells (Max.) : 12
Minimum Visible Range [s] : 17
Maximum Visible Range [s] : 70
Start Analysis Time Range [s] : 18
End Analysis Time Range [s] : 69
Ladder Concentration [pg/ μ l] : 1000
Lower Marker Concentration [pg/ μ l] : 0
Upper Marker Concentration [pg/ μ l] : 0
Used Lower Marker for Quantitation
Standard Curve Fit is Logarithmic
Show Data Aligned to Lower Marker

Integrator Settings

Integration Start Time [s] : 18
Integration End Time [s] : 69
Slope Threshold : 0.6
Height Threshold [FU] : 0.5
Area Threshold : 0.2
Width Threshold [s] : 0.3
Baseline Plateau [s] : 6

Filter Settings

Filter Width [s] : 0.5
Polynomial Order : 4

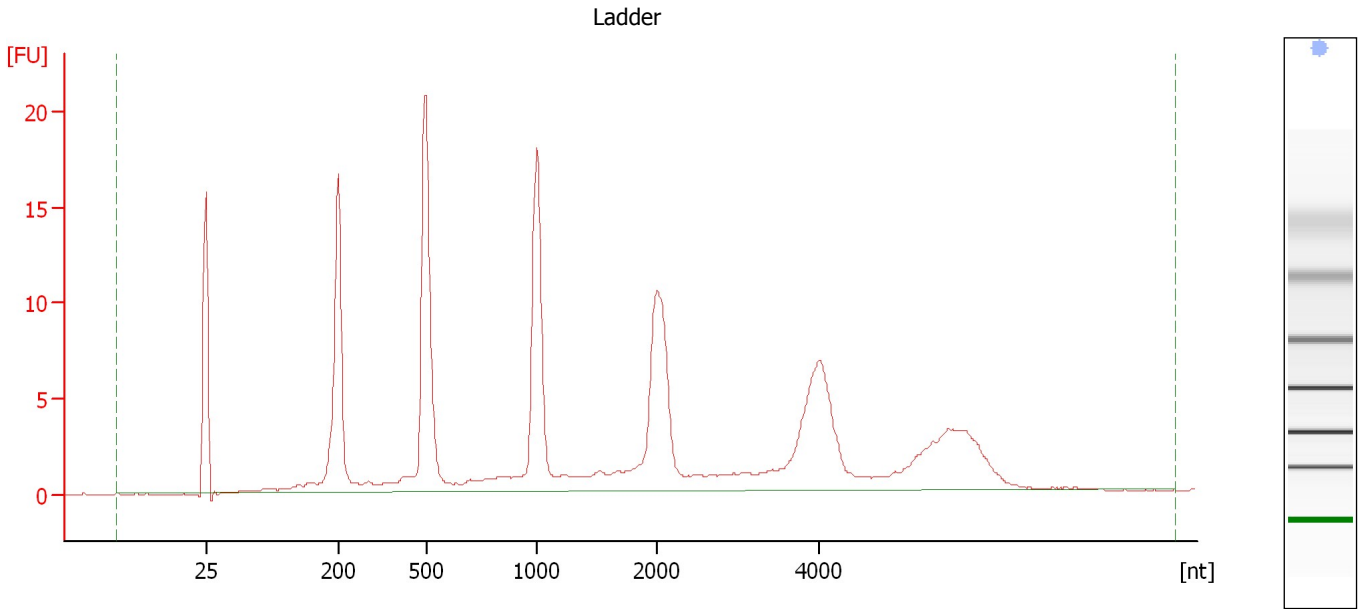
Ladder

Ladder Peak	Size
1	25
2	200
3	500
4	1000
5	2000
6	4000

Assay Class: Eukaryote Total RNA Pico
Data Path: C:\...ents and Settings\Bioanalyzer\2013-08-22\2013-08-22_005.xad

Created: 8/22/2013 3:29:57 PM
Modified: 8/22/2013 3:43:20 PM

Electropherogram Summary



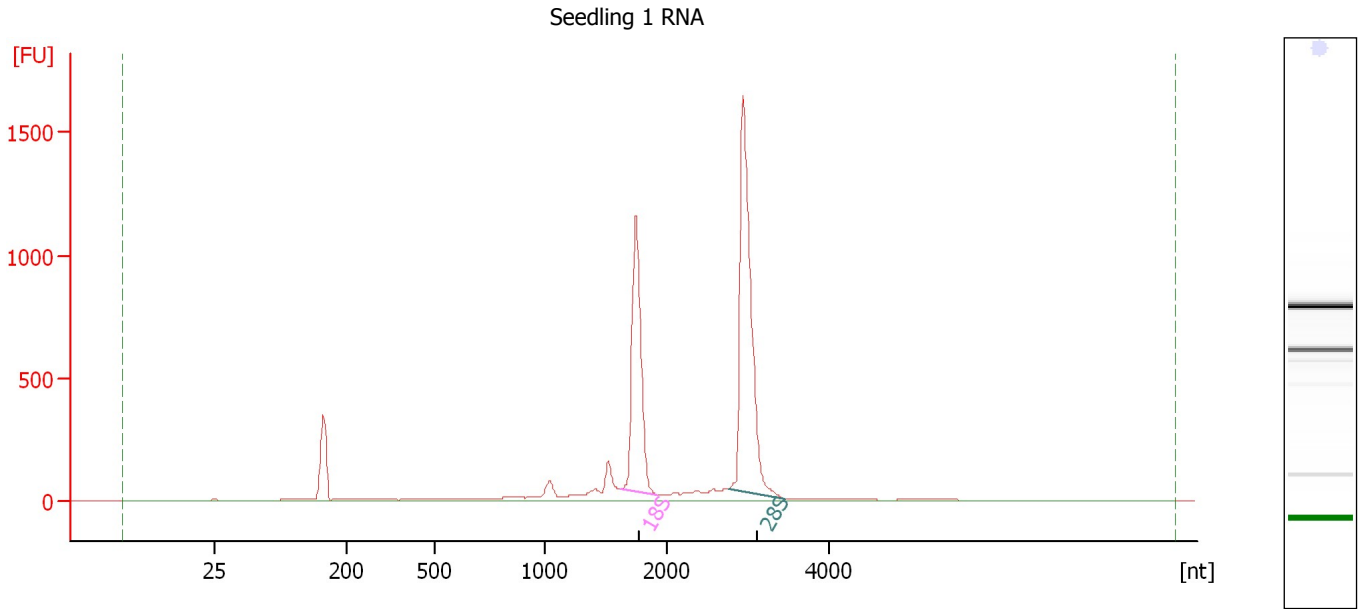
Overall Results for Ladder

RNA Area:	174.1	Result Flagging Color:	
RNA Concentration:	1,000 pg/μl	Result Flagging Label:	All Other Samples

Assay Class: Eukaryote Total RNA Pico
Data Path: C:\...ents and Settings\Bioanalyzer\2013-08-22\2013-08-22_005.xad

Created: 8/22/2013 3:29:57 PM
Modified: 8/22/2013 3:43:20 PM

Electropherogram Summary Continued ...



Overall Results for sample 1 : Seedling 1 RNA

RNA Area: 4,781.7 RNA Integrity Number (RIN): 9.7 (B.02.08)
RNA Concentration: 27,459 pg/μl Result Flagging Color:
rRNA Ratio [28s / 18s]: 1.6 Result Flagging Label: RIN: 9.70

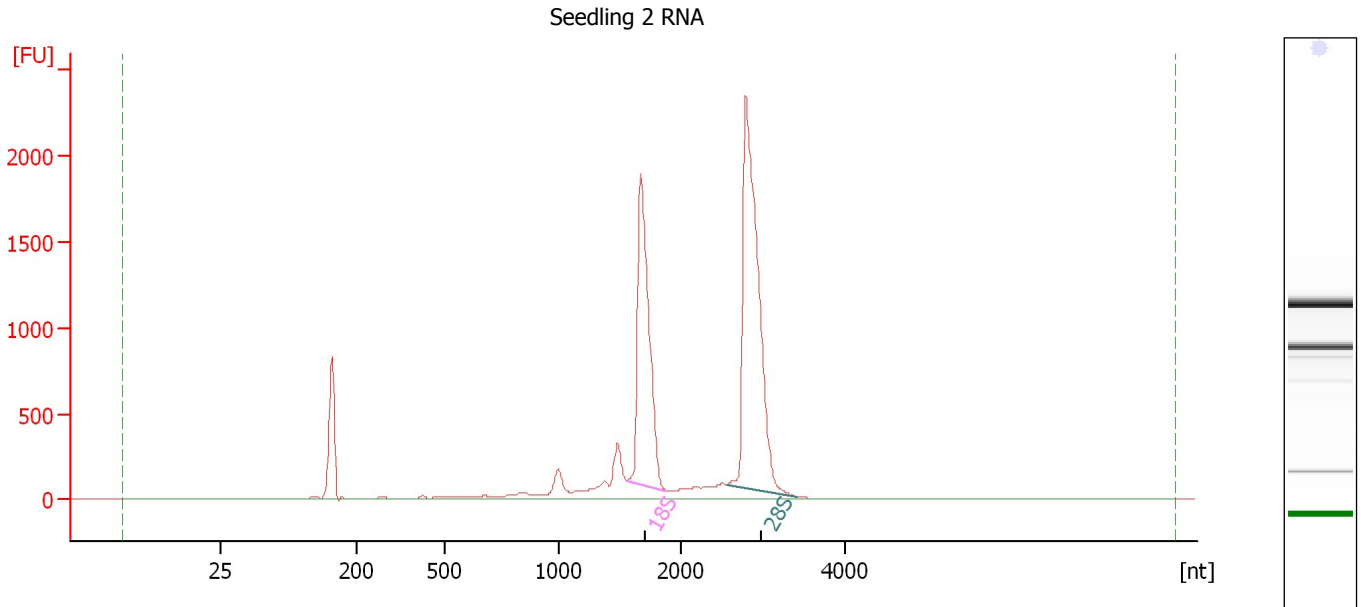
Fragment table for sample 1 : Seedling 1 RNA

Name	Start Size [nt]	End Size [nt]	Area	% of total Area
18S	1,615	1,914	1,233.4	25.8
28S	2,767	3,478	1,984.7	41.5

Assay Class: Eukaryote Total RNA Pico
 Data Path: C:\...ents and Settings\Bioanalyzer\2013-08-22\2013-08-22_005.xad

Created: 8/22/2013 3:29:57 PM
 Modified: 8/22/2013 3:43:20 PM

Electropherogram Summary Continued ...



Overall Results for sample 2 : Seedling 2 RNA

RNA Area:	9,966.4	RNA Integrity Number (RIN):	9.5 (B.02.08, Anomaly Threshold(s) manually adapted)
RNA Concentration:	57,232 pg/μl	Result Flagging Color:	
rRNA Ratio [28s / 18s]:	1.5	Result Flagging Label:	RIN: 9.50

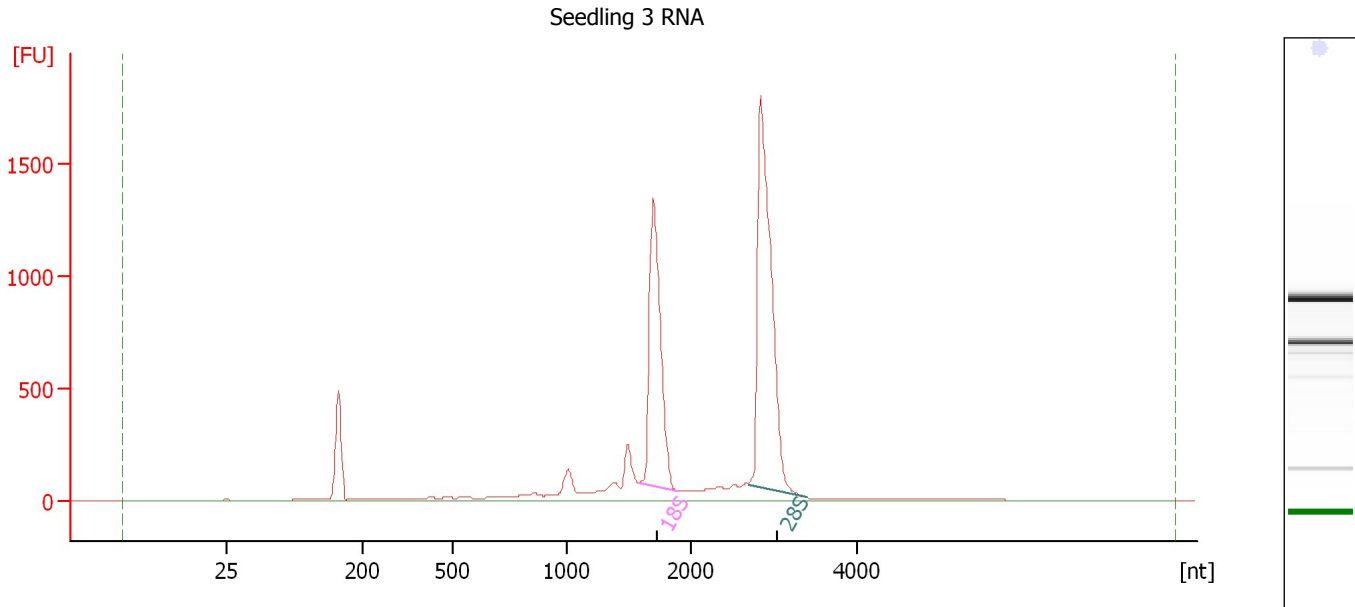
Fragment table for sample 2 : Seedling 2 RNA

Name	Start Size [nt]	End Size [nt]	Area	% of total Area
18S	1,567	1,879	2,542.3	25.5
28S	2,558	3,427	3,836.7	38.5

Assay Class: Eukaryote Total RNA Pico
 Data Path: C:\...ents and Settings\Bioanalyzer\2013-08-22\2013-08-22_005.xad

Created: 8/22/2013 3:29:57 PM
 Modified: 8/22/2013 3:43:20 PM

Electropherogram Summary Continued ...



Overall Results for sample 3 : Seedling 3 RNA

RNA Area:	6,831.5	RNA Integrity Number (RIN):	9.4 (B.02.08)
RNA Concentration:	39,230 pg/μl	Result Flagging Color:	
rRNA Ratio [28s / 18s]:	1.5	Result Flagging Label:	RIN: 9.40

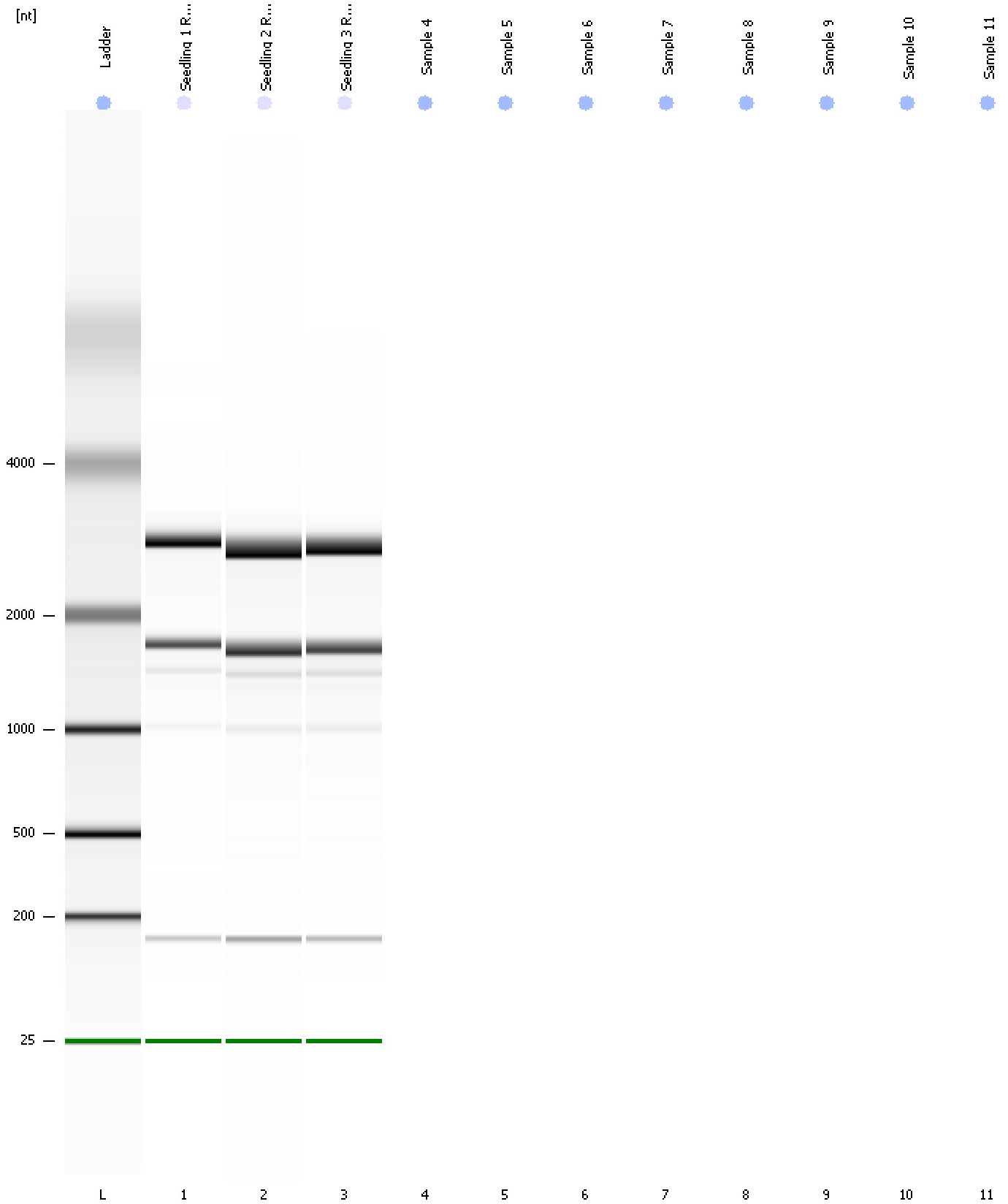
Fragment table for sample 3 : Seedling 3 RNA

Name	Start Size [nt]	End Size [nt]	Area	% of total Area
18S	1,584	1,884	1,693.8	24.8
28S	2,700	3,394	2,599.6	38.1

Assay Class: Eukaryote Total RNA Pico
Data Path: C:\...ents and Settings\Bioanalyzer\2013-08-22\2013-08-22_005.xad

Created: 8/22/2013 3:29:57 PM
Modified: 8/22/2013 3:43:20 PM

Gel Image



Assay Class: Eukaryote Total RNA Pico
Data Path: C:\...ents and Settings\Bioanalyzer\2013-08-22\2013-08-22_005.xad

Created: 8/22/2013 3:29:57 PM
Modified: 8/22/2013 3:43:20 PM

Invalid Samples

Sample 4 has not been run, no results available.

Sample 5 has not been run, no results available.

Sample 6 has not been run, no results available.

Sample 7 has not been run, no results available.

Sample 8 has not been run, no results available.

Sample 9 has not been run, no results available.

Sample 10 has not been run, no results available.

Sample 11 has not been run, no results available.

Assay Class: Eukaryote Total RNA Pico
 Data Path: C:\...ents and Settings\Bioanalyzer\2013-08-22\2013-08-22_005.xad

Created: 8/22/2013 3:29:57 PM
 Modified: 8/22/2013 3:43:20 PM

Run Logbook

Description	Number	Source	Category	Sub Category	Time	Time Zone	User	Host
Run ended on port 1 (Number of wells acquired: 4)		Instrument	Run		8/22/2013 3:41:19 PM	(GMT --07:00) Pacific Standard Time	UC Davis	D8XSMGH1
Run started on port 1 (File: C:\Documents and Settings\Bioanalyzer\2013-08-22\2013-08-22_005.xad)		Instrument	Run		8/22/2013 3:29:57 PM	(GMT --07:00) Pacific Standard Time	UC Davis	D8XSMGH1
Product Number : G2938B		Instrument	Run		8/22/2013 3:29:57 PM	(GMT --07:00) Pacific Standard Time	UC Davis	D8XSMGH1
Name :		Instrument	Run		8/22/2013 3:29:57 PM	(GMT --07:00) Pacific Standard Time	UC Davis	D8XSMGH1
Vendor : Agilent Technologies		Instrument	Run		8/22/2013 3:29:57 PM	(GMT --07:00) Pacific Standard Time	UC Davis	D8XSMGH1
Serial# : DE13701086		Instrument	Run		8/22/2013 3:29:57 PM	(GMT --07:00) Pacific Standard Time	UC Davis	D8XSMGH1
Firmware : C.01.069		Instrument	Run		8/22/2013 3:29:57 PM	(GMT --07:00) Pacific Standard Time	UC Davis	D8XSMGH1
Cartridge : Electrode		Instrument	Run		8/22/2013 3:29:57 PM	(GMT --07:00) Pacific Standard Time	UC Davis	D8XSMGH1