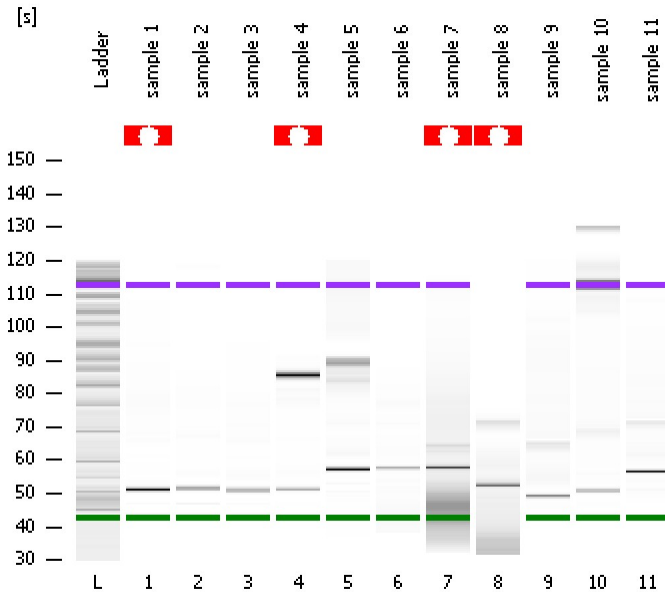


Assay Class: High Sensitivity DNA Assay
Data Path: C:\...ents and Settings\Bioanalyzer\2013-08-23\2013-08-23_001.xad

Created: 8/23/2013 3:17:11 PM
Modified: 8/23/2013 3:58:31 PM

Electrophoresis File Run Summary



Instrument Information:

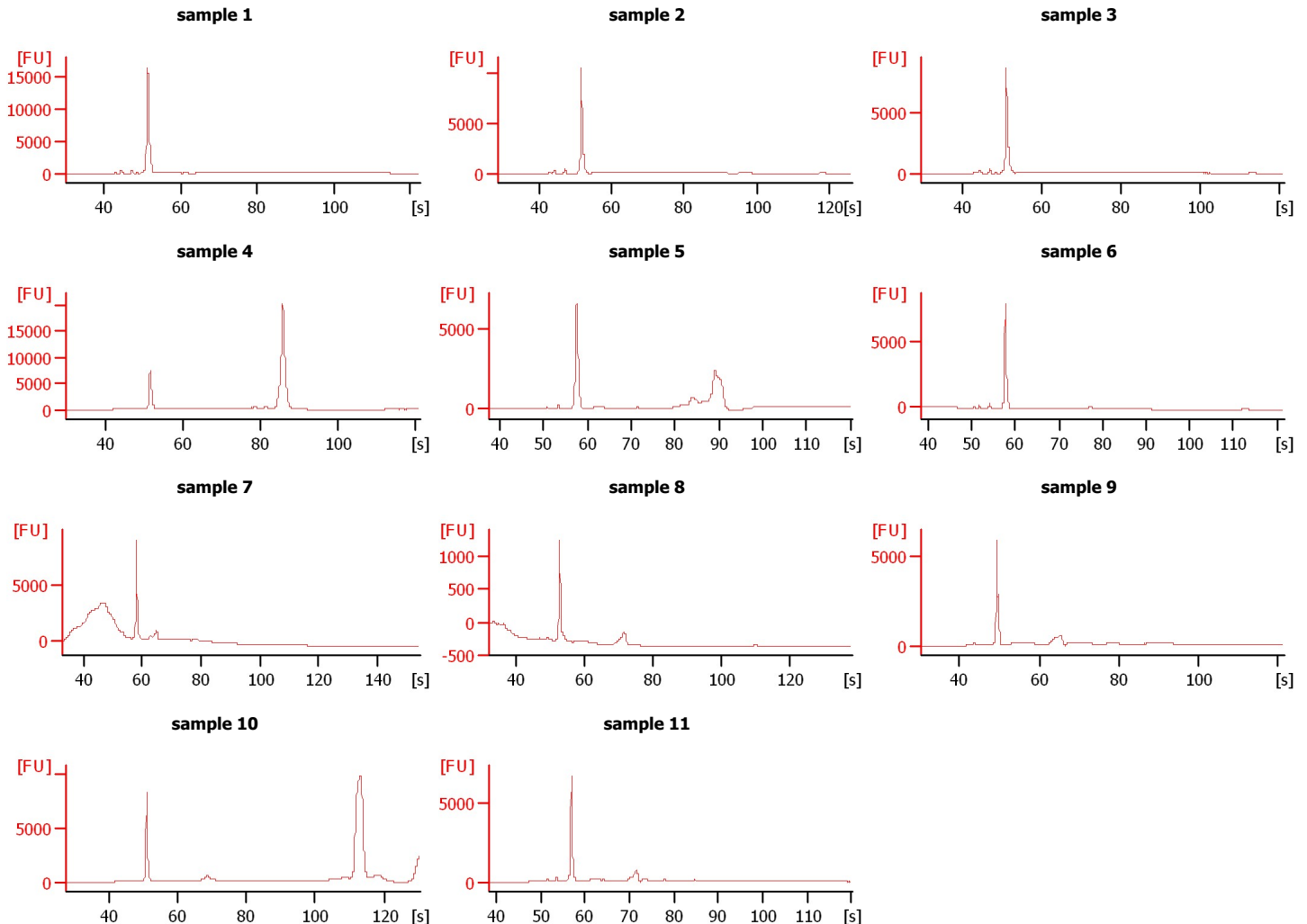
Instrument Name: DE13701086 Firmware: C.01.069
Serial#: DE13701086 Type: G2938B

Assay Information:

Assay Origin Path: C:\Program Files\Agilent\2100 bioanalyzer\2100 expert\assays\dsDNA\High Sensitivity DNA.xsy
Assay Class: High Sensitivity DNA Assay
Version: 1.03
Assay Comments: Copyright © 2003-2010 Agilent Technologies

Chip Information:

Chip Lot #: Reagent Kit Lot #: Chip Comments:



Assay Class: High Sensitivity DNA Assay
 Data Path: C:\...ents and Settings\Bioanalyzer\2013-08-23\2013-08-23_001.xad

Created: 8/23/2013 3:17:11 PM
 Modified: 8/23/2013 3:58:31 PM

Electrophoresis File Run Summary (Chip Summary)

Sample Name	Sample Comment	Rest. Digest	Status	Observation	Result Label	Result Color
sample 1		<input type="checkbox"/>				
sample 2		<input type="checkbox"/>				
sample 3		<input type="checkbox"/>				
sample 4		<input type="checkbox"/>				
sample 5		<input type="checkbox"/>				
sample 6		<input type="checkbox"/>				
sample 7		<input type="checkbox"/>				
sample 8		<input type="checkbox"/>				
sample 9		<input type="checkbox"/>				
sample 10		<input type="checkbox"/>				
sample 11		<input type="checkbox"/>				
Ladder		<input type="checkbox"/>				

Chip Lot #

Reagent Kit Lot #

Chip Comments :

Assay Class: High Sensitivity DNA Assay
Data Path: C:\...ents and Settings\Bioanalyzer\2013-08-23\2013-08-23_001.xad

Created: 8/23/2013 3:17:11 PM
Modified: 8/23/2013 3:58:31 PM

Electrophoresis Assay Details

General Analysis Settings

Number of Available Sample and Ladder Wells (Max.) : 12
Minimum Visible Range [s] : 32
Maximum Visible Range [s] : 138
Start Analysis Time Range [s] : 33
End Analysis Time Range [s] : 137.5
Ladder Concentration [pg/ μ l] : 1950
Uses Standard Area for Ladder Fragments
Lower Marker Concentration [pg/ μ l] : 125
Upper Marker Concentration [pg/ μ l] : 75
Used Upper Marker for Quantitation
Standard Curve Fit is Point to Point
Show Data Aligned to Lower and Upper Marker

Integrator Settings

Integration Start Time [s] : 33.05
Integration End Time [s] : 137
Slope Threshold : 0.8
Height Threshold [FU] : 5
Area Threshold : 0.1
Width Threshold [s] : 0.6
Baseline Plateau [s] : 0.5

Filter Settings

Filter Width [s] : 0.5
Polynomial Order : 4

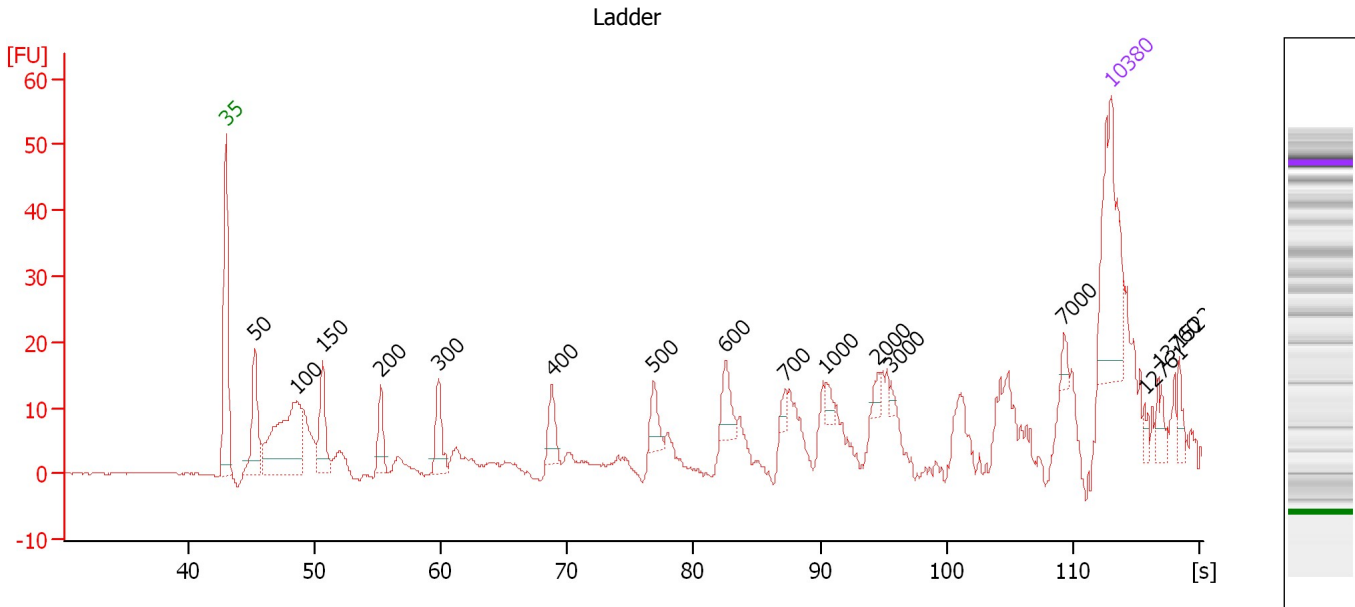
Ladder

Ladder Peak	Size	Area
1	35	160
2	50	210
3	100	208
4	150	221
5	200	242
6	300	270
7	400	305
8	500	306
9	600	336
10	700	321
11	1000	366
12	2000	413
13	3000	411
14	7000	400
15	10380	214

Assay Class: High Sensitivity DNA Assay
 Data Path: C:\...ents and Settings\Bioanalyzer\2013-08-23\2013-08-23_001.xad

Created: 8/23/2013 3:17:11 PM
 Modified: 8/23/2013 3:58:31 PM

Electropherogram Summary



Overall Results for Ladder

Noise: 0.2

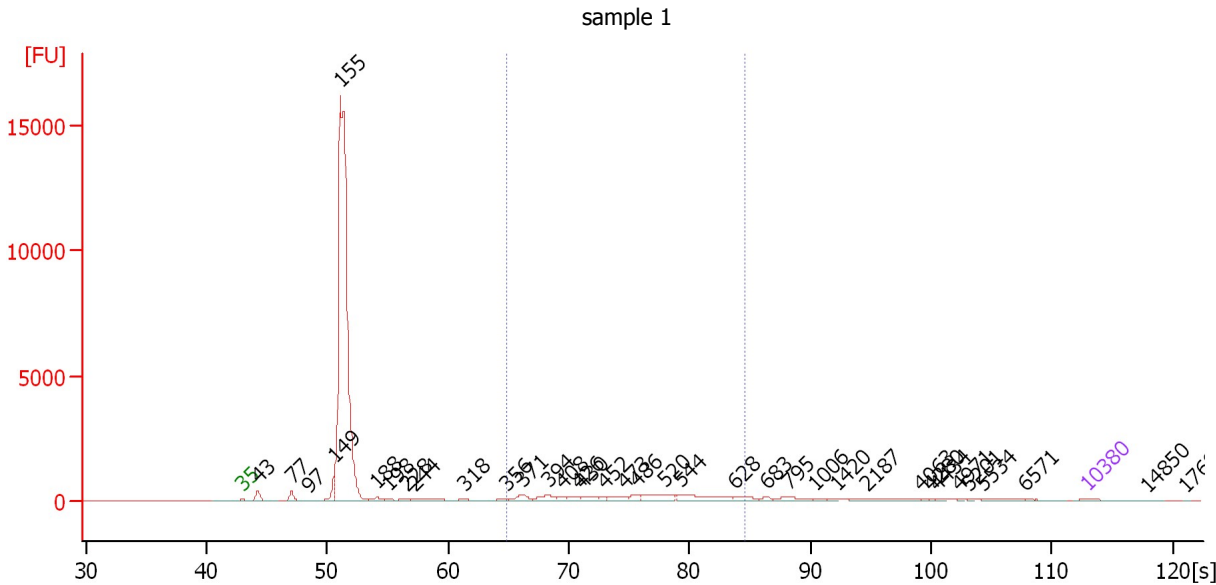
Peak table for Ladder

Peak	Size [bp]	Conc. [pg/μl]	Molarity [pmol/l]	Observations
1	35	125.00	5,411.3	Lower Marker
2	50	150.00	4,545.5	Ladder Peak
3	100	150.00	2,272.7	Ladder Peak
4	150	150.00	1,515.2	Ladder Peak
5	200	150.00	1,136.4	Ladder Peak
6	300	150.00	757.6	Ladder Peak
7	400	150.00	568.2	Ladder Peak
8	500	150.00	454.5	Ladder Peak
9	600	150.00	378.8	Ladder Peak
10	700	150.00	324.7	Ladder Peak
11	1,000	150.00	227.3	Ladder Peak
12	2,000	150.00	113.6	Ladder Peak
13	3,000	150.00	75.8	Ladder Peak
14	7,000	150.00	32.5	Ladder Peak
15	10,380	75.00	10.9	Upper Marker
16	12,761	0.00	0.0	
17	13,760	0.00	0.0	
18	15,220	0.00	0.0	

Assay Class: High Sensitivity DNA Assay
 Data Path: C:\...ents and Settings\Bioanalyzer\2013-08-23\2013-08-23_001.xad

Created: 8/23/2013 3:17:11 PM
 Modified: 8/23/2013 3:58:31 PM

Electropherogram Summary Continued ...



Overall Results for sample 1 : sample 1

Number of peaks found: 36 Corr. Area 1: 5,106.1
 Noise: 0.3

Peak table for sample 1 : sample 1

Peak	Size [bp]	Conc. [pg/μl]	Molarity [pmol/l]	Observations
1	35	125.00	5,411.3	Lower Marker
2	43	509.46	17,763.9	
3	77	378.06	7,431.3	
4	97	77.97	1,222.4	
5	149	733.44	7,448.8	
6	155	23,217.91	227,128.4	
7	188	203.28	1,640.2	
8	198	108.31	827.6	
9	228	128.39	853.1	
10	244	311.32	1,931.3	
11	318	126.65	602.8	
12	356	105.63	449.7	
13	371	312.21	1,276.6	
14	394	341.88	1,313.1	
15	408	111.17	412.8	
16	426	174.50	620.7	
17	430	224.07	788.9	
18	452	102.71	344.6	
19	473	285.42	914.6	
20	486	185.71	579.0	
21	520	578.76	1,686.0	
22	544	692.08	1,927.7	
23	628	211.03	509.2	
24	683	101.62	225.6	
25	795	252.91	482.1	
26	1,006	59.81	90.1	

Assay Class: High Sensitivity DNA Assay
 Data Path: C:\...ents and Settings\Bioanalyzer\2013-08-23\2013-08-23_001.xad


Created: 8/23/2013 3:17:11 PM
 Modified: 8/23/2013 3:58:31 PM

Electropherogram Summary Continued ...

... Peak table for sample 1 : sample 1

Peak	Size [bp]	Conc. [pg/µl]	Molarity [pmol/l]	Observations
27	1,420	53.55	57.1	
28	2,187	283.11	196.1	
29	4,063	24.24	9.0	
30	4,280	20.34	7.2	
31	4,434	33.25	11.4	
32	4,971	22.25	6.8	
33	5,201	18.85	5.5	
34	5,534	89.41	24.5	
35	6,571	51.97	12.0	
36	10,380	75.00	10.9	Upper Marker
37	14,850	0.00	0.0	
38	17,699	0.00	0.0	

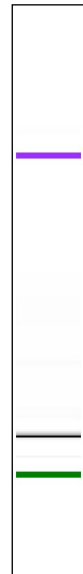
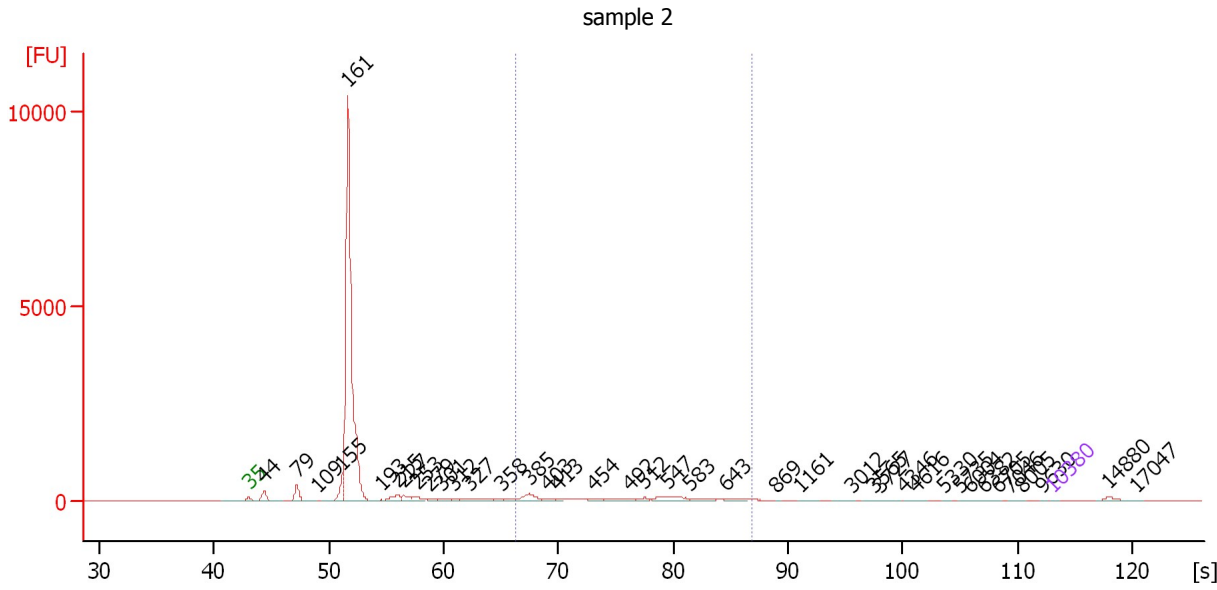
Region table for sample 1 : sample 1

From [bp]	To [bp]	Average Size [bp]	Molarity [pmol/l]	Conc. [pg/µl]	Corr. Area	% of Total	Size distribution in CV [%]	Color
357	644	487	10,054.4	3,112.99	5,106.1	13	15.6	

Assay Class: High Sensitivity DNA Assay
 Data Path: C:\...ents and Settings\Bioanalyzer\2013-08-23\2013-08-23_001.xad

Created: 8/23/2013 3:17:11 PM
 Modified: 8/23/2013 3:58:31 PM

Electropherogram Summary Continued ...



Overall Results for sample 2 : sample 2

Number of peaks found: 40 Corr. Area 1: 2,189.0
 Noise: 0.4

Peak table for sample 2 : sample 2

Peak	Size [bp]	Conc. [pg/μl]	Molarity [pmol/l]	Observations
1	35	125.00	5,411.3	Lower Marker
2	44	10,430.62	359,961.4	
3	79	12,313.83	236,342.5	
4	109	451.67	6,254.5	
5	155	12,322.15	120,398.2	
6	161	310,822.84	2,932,526.5	
7	193	1,157.10	9,096.1	
8	215	6,899.74	48,712.3	
9	227	4,994.76	33,387.7	
10	253	4,707.52	28,216.3	
11	279	2,417.79	13,134.8	
12	301	2,426.16	12,232.4	
13	312	1,082.65	5,251.9	
14	327	5,762.98	26,682.3	
15	358	1,287.76	5,456.4	
16	385	9,760.86	38,378.2	
17	403	2,728.38	10,268.2	
18	413	1,472.96	5,397.2	
19	454	2,531.66	8,444.3	
20	492	5,365.87	16,519.9	
21	512	2,837.68	8,391.0	
22	547	7,702.80	21,328.1	
23	583	4,079.59	10,605.4	
24	643	2,532.71	5,969.8	
25	869	420.70	733.4	
26	1,161	1,020.73	1,331.6	

Assay Class: High Sensitivity DNA Assay
 Data Path: C:\...ents and Settings\Bioanalyzer\2013-08-23\2013-08-23_001.xad


Created: 8/23/2013 3:17:11 PM
 Modified: 8/23/2013 3:58:31 PM

Electropherogram Summary Continued ...

... Peak table for sample 2 : sample 2

Peak	Size [bp]	Conc. [pg/µl]	Molarity [pmol/l]	Observations
27	3,012	863.94	434.6	
28	3,565	661.93	281.3	
29	3,727	893.93	363.5	
30	4,346	319.40	111.3	
31	4,616	371.59	122.0	
32	5,330	192.59	54.7	
33	5,735	154.73	40.9	
34	6,004	218.94	55.2	
35	6,382	269.50	64.0	
36	6,705	112.63	25.5	
37	7,046	129.54	27.9	
38	8,005	88.97	16.8	
39	9,630	81.07	12.8	
40	10,380	75.00	10.9	Upper Marker
41	14,880	0.00	0.0	
42	17,047	0.00	0.0	

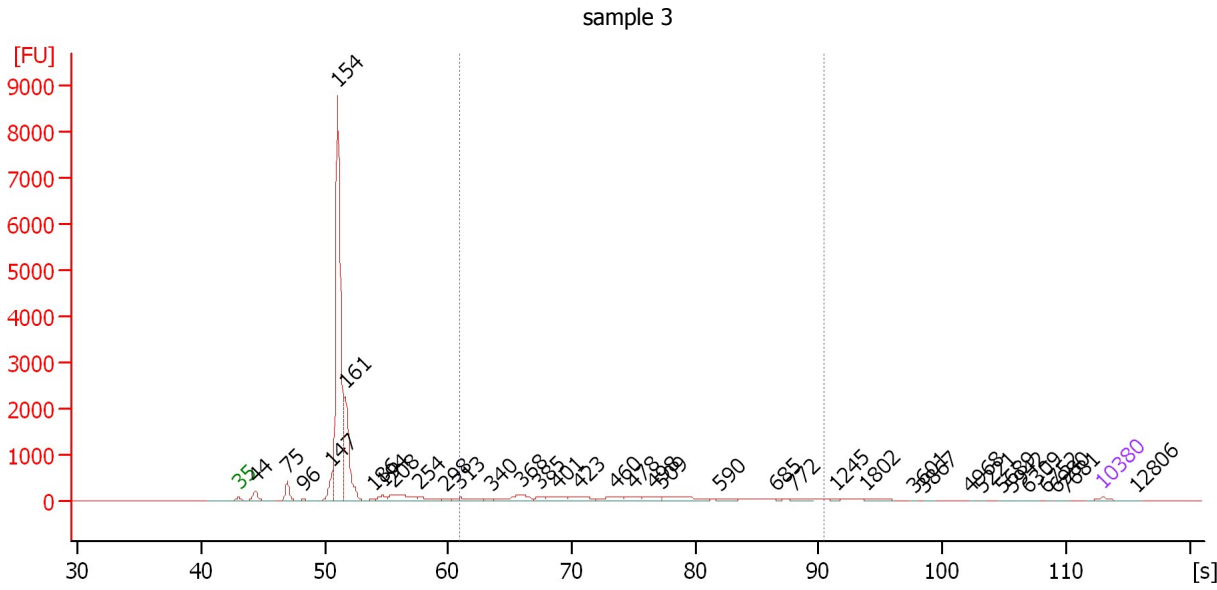
Region table for sample 2 : sample 2

From [bp]	To [bp]	Average Size [bp]	Molarity [pmol/l]	Conc. [pg/µl]	Corr. Area	% of Total	Size distribution in CV [%]	Color
371	693	500	136,587.3	43,008.74	2,189.0	13	17.7	

Assay Class: High Sensitivity DNA Assay
 Data Path: C:\...ents and Settings\Bioanalyzer\2013-08-23\2013-08-23_001.xad

Created: 8/23/2013 3:17:11 PM
 Modified: 8/23/2013 3:58:31 PM

Electropherogram Summary Continued ...



Overall Results for sample 3 : sample 3

Number of peaks found: 37 Corr. Area 1: 2,783.9
 Noise: 0.3

Peak table for sample 3 : sample 3

Peak	Size [bp]	Conc. [pg/μl]	Molarity [pmol/l]	Observations
1	35	125.00	5,411.3	Lower Marker
2	44	520.20	17,822.2	
3	75	613.12	12,366.8	
4	96	93.50	1,479.7	
5	147	789.39	8,130.3	
6	154	11,637.04	114,564.9	
7	161	3,336.33	31,402.5	
8	186	73.23	595.1	
9	194	228.97	1,788.4	
10	208	737.44	5,377.7	
11	254	303.32	1,809.4	
12	298	95.36	484.3	
13	313	313.48	1,519.2	
14	340	64.85	288.8	
15	368	477.75	1,968.7	
16	385	122.05	480.8	
17	401	208.48	787.5	
18	423	306.13	1,096.0	
19	460	264.51	870.5	
20	478	162.26	514.7	
21	498	221.90	675.0	
22	509	424.56	1,262.6	
23	590	116.96	300.3	
24	685	28.10	62.1	
25	772	83.55	164.0	
26	1,245	30.81	37.5	

Assay Class: High Sensitivity DNA Assay
 Data Path: C:\...ents and Settings\Bioanalyzer\2013-08-23\2013-08-23_001.xad


Created: 8/23/2013 3:17:11 PM
 Modified: 8/23/2013 3:58:31 PM

Electropherogram Summary Continued ...

... Peak table for sample 3 : sample 3

Peak	Size [bp]	Conc. [pg/µl]	Molarity [pmol/l]	Observations
27	1,802	68.34	57.5	
28	3,601	12.01	5.1	
29	3,867	17.27	6.8	
30	4,968	9.89	3.0	
31	5,221	8.14	2.4	
32	5,689	11.00	2.9	
33	5,942	9.33	2.4	
34	6,309	13.07	3.1	
35	6,752	4.06	0.9	
36	6,980	4.50	1.0	
37	7,681	3.37	0.7	
38	10,380	75.00	10.9	Upper Marker
39	12,806	0.00	0.0	

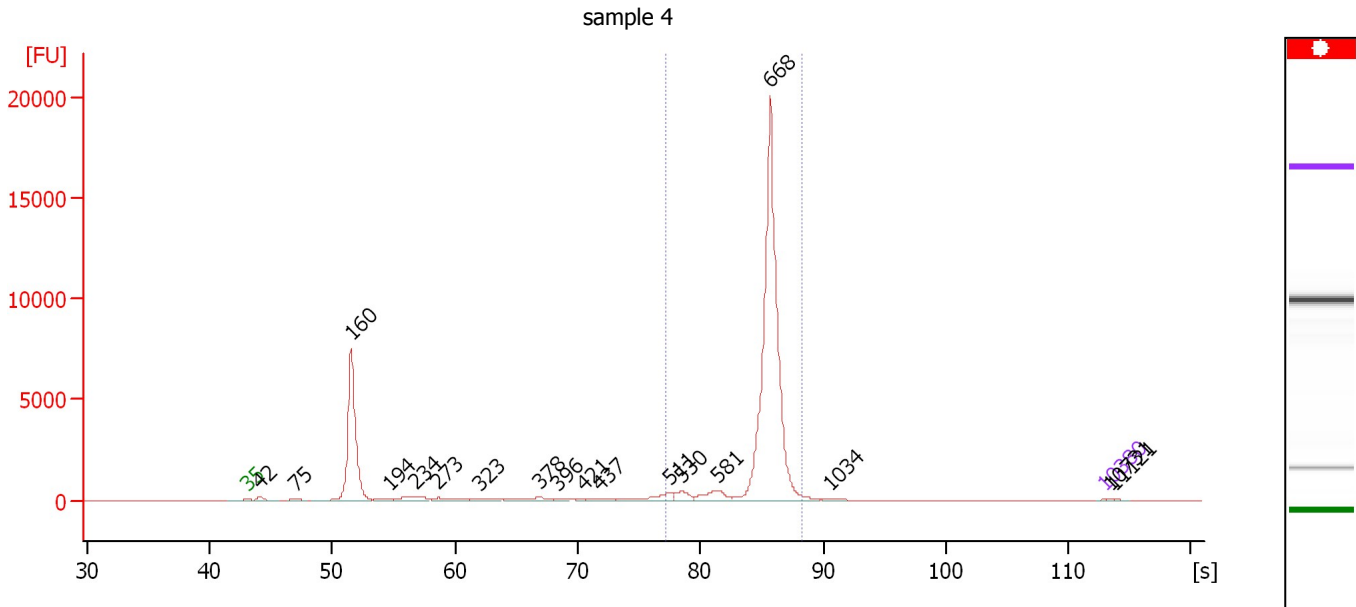
Region table for sample 3 : sample 3

From [bp]	To [bp]	Average Size [bp]	Molarity [pmol/l]	Conc. [pg/µl]	Corr. Area	% of Total	Size distribution in CV [%]	Color
313	1,000	490	9,924.0	2,940.30	2,783.9	17	26.9	

Assay Class: High Sensitivity DNA Assay
 Data Path: C:\...ents and Settings\Bioanalyzer\2013-08-23\2013-08-23_001.xad

Created: 8/23/2013 3:17:11 PM
 Modified: 8/23/2013 3:58:31 PM

Electropherogram Summary Continued ...



Overall Results for sample 4 : sample 4

Number of peaks found: 18 Corr. Area 1: 31,211.9
 Noise: 0.3

Peak table for sample 4 : sample 4

Peak	Size [bp]	Conc. [pg/μl]	Molarity [pmol/l]	Observations
1	35	125.00	5,411.3	Lower Marker
2	42	2,907.63	104,444.9	
3	75	1,497.65	30,295.1	
4	160	126,197.09	1,197,381.5	
5	194	1,409.96	11,012.7	
6	234	7,761.48	50,253.8	
7	273	4,453.83	24,676.1	
8	323	1,890.16	8,854.1	
9	378	3,476.90	13,926.2	
10	396	955.13	3,658.2	
11	421	607.93	2,188.7	
12	437	1,650.33	5,722.5	
13	511	7,020.28	20,813.5	
14	530	5,933.59	16,963.3	
15	581	9,506.06	24,802.1	
16	668	230,709.56	523,176.2	
17	1,034	1,421.87	2,083.2	
18	10,380	75.00	10.9	Upper Marker
19	10,731	0.00	0.0	
20	11,121	0.00	0.0	

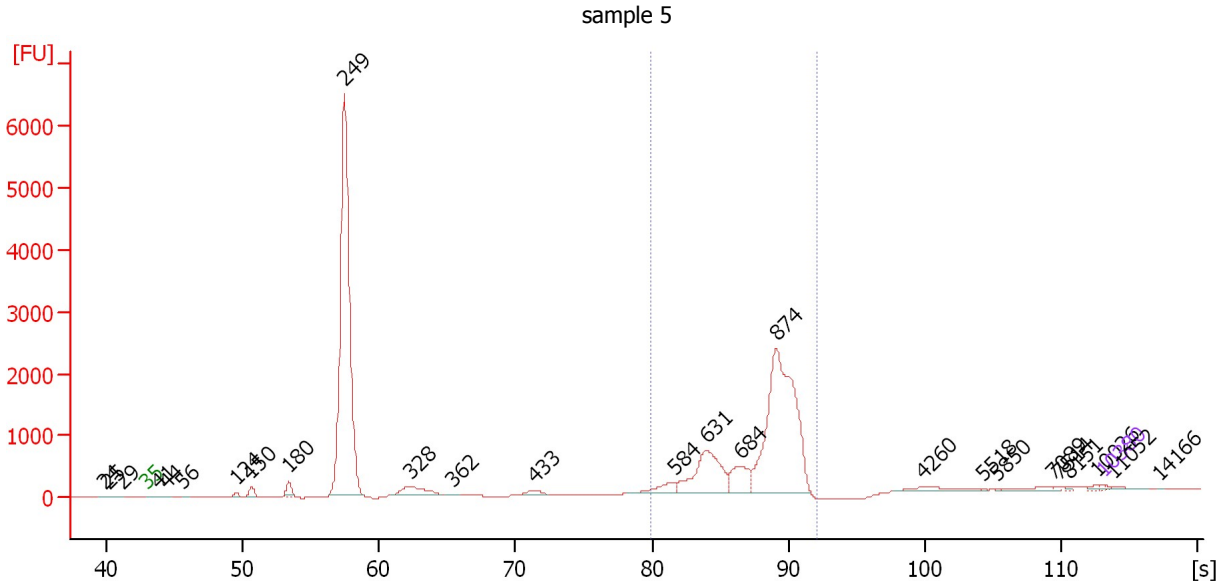
Region table for sample 4 : sample 4

From [bp]	To [bp]	Average Size [bp]	Molarity [pmol/l]	Conc. [pg/μl]	Corr. Area	% of Total	Size distribution in CV [%]	Color
507	802	661	569,429.1	247,439.86	31,211.9	67	5.3	Blue

Assay Class: High Sensitivity DNA Assay
 Data Path: C:\...ents and Settings\Bioanalyzer\2013-08-23\2013-08-23_001.xad

Created: 8/23/2013 3:17:11 PM
 Modified: 8/23/2013 3:58:31 PM

Electropherogram Summary Continued ...



Overall Results for sample 5 : sample 5

Number of peaks found: 26 Corr. Area 1: 10,539.0
 Noise: 2.3

Peak table for sample 5 : sample 5

Peak	Size [bp]	Conc. [pg/μl]	Molarity [pmol/l]	Observations
1	24	0.00	0.0	
2	25	0.00	0.0	
3	29	0.00	0.0	
4	35	125.00	5,411.3	Lower Marker
5	41	53.74	1,998.7	
6	44	56.95	1,955.5	
7	56	26.44	721.5	
8	124	128.87	1,578.4	
9	150	424.82	4,283.8	
10	180	599.23	5,040.9	
11	249	25,072.07	152,608.3	
12	328	1,174.20	5,431.4	
13	362	28.79	120.5	
14	433	214.63	751.6	
15	584	712.32	1,846.5	
16	631	3,768.62	9,048.2	
17	684	1,624.90	3,598.4	
18	874	12,027.39	20,843.3	
19	4,260	409.55	145.7	
20	5,518	14.31	3.9	
21	5,850	12.07	3.1	
22	7,089	197.96	42.3	
23	7,514	47.05	9.5	
24	8,151	50.56	9.4	
25	10,026	90.22	13.6	
26	10,380	75.00	10.9	Upper Marker

Assay Class: High Sensitivity DNA Assay
Data Path: C:\...ents and Settings\Bioanalyzer\2013-08-23\2013-08-23_001.xad

Created: 8/23/2013 3:17:11 PM
Modified: 8/23/2013 3:58:31 PM

Electropherogram Summary Continued ...**... Peak table for sample 5 : sample 5**

Peak	Size [bp]	Conc. [pg/ μ l]	Molarity [pmol/l]	Observations
27	11,052	0.00	0.0	
28	14,166	0.00	0.0	

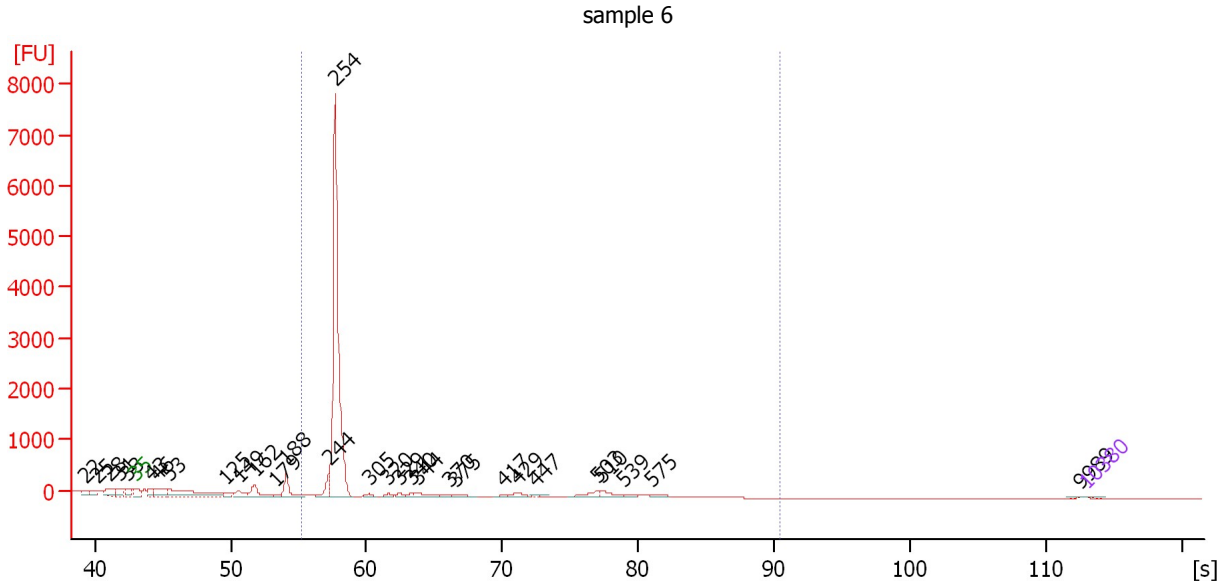
Region table for sample 5 : sample 5

From [bp]	To [bp]	Average Size [bp]	Molarity [pmol/l]	Conc. [pg/ μ l]	Corr. Area	% of Total	Size distribution in CV [%]	Color
554	1,387	833	33,963.6	17,863.92	10,539.0	45	18.7	

Assay Class: High Sensitivity DNA Assay
 Data Path: C:\...ents and Settings\Bioanalyzer\2013-08-23\2013-08-23_001.xad

Created: 8/23/2013 3:17:11 PM
 Modified: 8/23/2013 3:58:31 PM

Electropherogram Summary Continued ...



Overall Results for sample 6 : sample 6

Number of peaks found: 30 Corr. Area 1: 7,989.5
 Noise: 0.8

Peak table for sample 6 : sample 6

Peak	Size [bp]	Conc. [pg/μl]	Molarity [pmol/l]	Observations
1	22	0.00	0.0	
2	25	0.00	0.0	
3	28	0.00	0.0	
4	31	0.00	0.0	
5	33	0.00	0.0	
6	35	125.00	5,411.3	Lower Marker
7	43	16,658.42	585,303.3	
8	46	28,525.30	944,840.9	
9	53	78,717.72	2,234,667.8	
10	125	7,600.78	91,773.2	
11	149	14,545.58	148,276.3	
12	162	26,614.64	248,535.2	
13	179	2,399.26	20,361.0	
14	188	30,426.72	245,819.0	
15	244	26,001.15	161,681.4	
16	254	468,861.16	2,797,390.0	
17	305	4,136.20	20,580.4	
18	320	4,496.39	21,298.4	
19	329	5,037.76	23,194.6	
20	340	3,710.99	16,556.1	
21	344	9,230.12	40,653.8	
22	370	2,643.26	10,827.3	
23	375	5,189.13	20,981.9	
24	417	2,394.24	8,692.4	
25	429	7,981.81	28,184.5	
26	447	290.35	984.8	

Assay Class: High Sensitivity DNA Assay
 Data Path: C:\...ents and Settings\Bioanalyzer\2013-08-23\2013-08-23_001.xad


Created: 8/23/2013 3:17:11 PM
 Modified: 8/23/2013 3:58:31 PM

Electropherogram Summary Continued ...

... Peak table for sample 6 : sample 6

Peak	Size [bp]	Conc. [pg/μl]	Molarity [pmol/l]	Observations
27	503	11,901.76	35,855.7	
28	510	11,678.33	34,705.8	
29	539	3,052.50	8,582.9	
30	575	4,516.05	11,904.4	
31	9,989	237.21	36.0	
32	10,380	75.00	10.9	Upper Marker

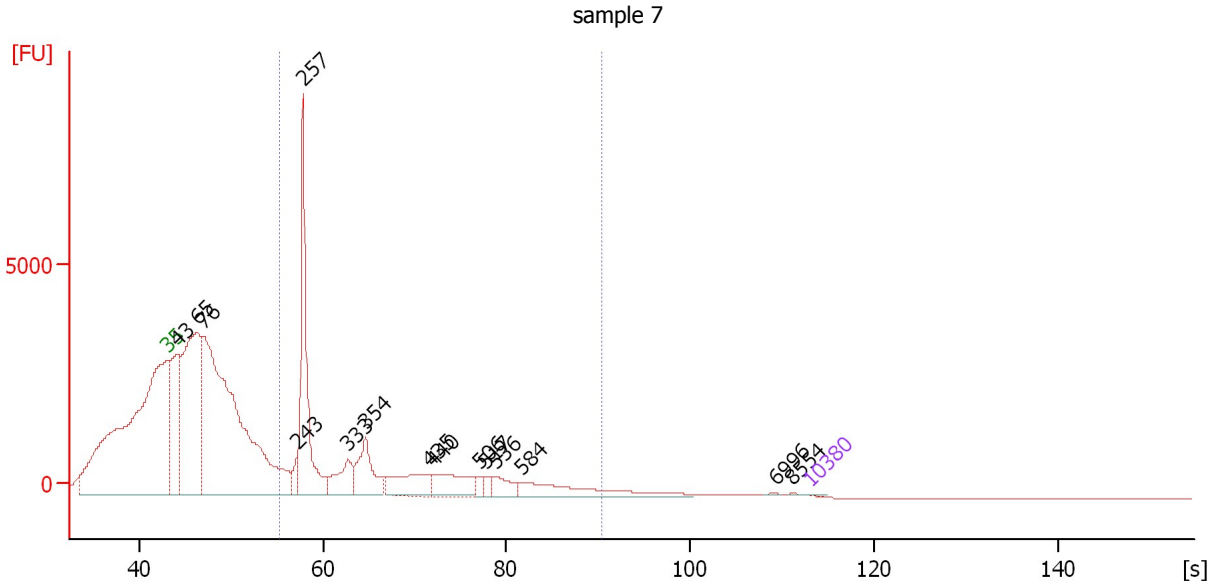
Region table for sample 6 : sample 6

From [bp]	To [bp]	Average Size [bp]	Molarity [pmol/l]	Conc. [pg/μl]	Corr. Area	% of Total	Size distribution in CV [%]	Color
200	1,000	263	2,813,436.3	478,928.25	7,989.5	90	16.5	

Assay Class: High Sensitivity DNA Assay
 Data Path: C:\...ents and Settings\Bioanalyzer\2013-08-23\2013-08-23_001.xad

Created: 8/23/2013 3:17:11 PM
 Modified: 8/23/2013 3:58:31 PM

Electropherogram Summary Continued ...



Overall Results for sample 7 : sample 7

Number of peaks found: 15 Corr. Area 1: 16,644.2
 Noise: 0.6

Peak table for sample 7 : sample 7

Peak	Size [bp]	Conc. [pg/μl]	Molarity [pmol/l]	Observations
1	35	125.00	5,411.3	Lower Marker
2	43	171,691.06	6,093,605.5	
3	65	313,178.91	7,247,897.0	
4	76	665,638.50	13,307,475.0	
5	243	16,662.81	103,983.2	
6	257	169,241.50	999,192.4	
7	333	36,306.11	165,104.7	
8	354	51,942.62	222,051.5	
9	435	42,692.82	148,572.8	
10	440	40,094.16	137,935.2	
11	506	5,468.93	16,369.7	
12	517	7,480.90	21,909.3	
13	536	16,081.01	45,491.6	
14	584	46,139.62	119,652.2	
15	6,996	395.20	85.6	
16	8,554	120.26	21.3	
17	10,380	75.00	10.9	Upper Marker

Region table for sample 7 : sample 7

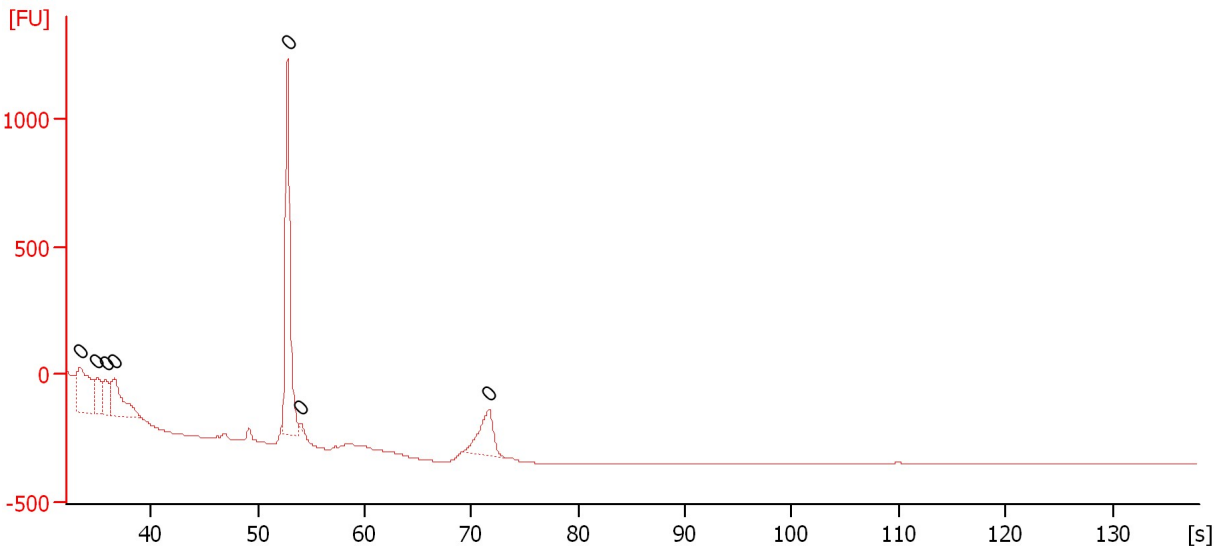
From [bp]	To [bp]	Average Size [bp]	Molarity [pmol/l]	Conc. [pg/μl]	Corr. Area	% of Total	Size distribution in CV [%]	Color
200	1,000	328	1,312,360.9	256,686.27	16,644.2	26	29.1	Blue

Assay Class: High Sensitivity DNA Assay
Data Path: C:\...ents and Settings\Bioanalyzer\2013-08-23\2013-08-23_001.xad

Created: 8/23/2013 3:17:11 PM
Modified: 8/23/2013 3:58:31 PM

Electropherogram Summary Continued ...

sample 8



Overall Results for sample 8 : sample 8

Number of peaks found: 0 Noise: 0.3

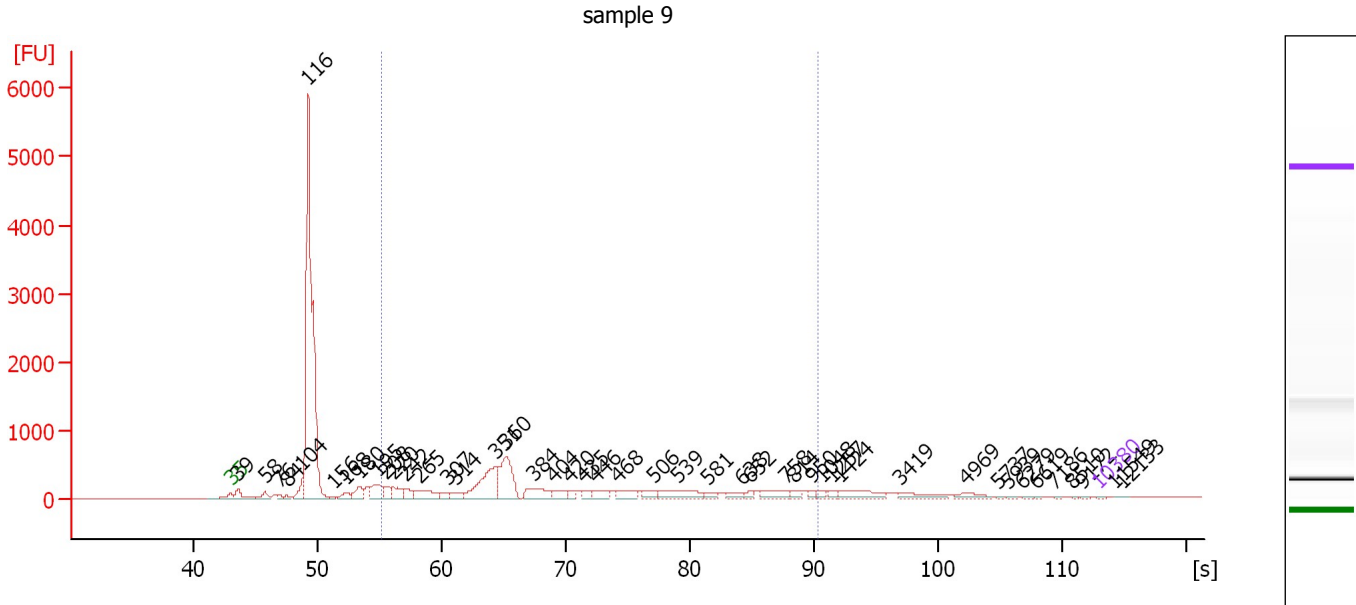
Peak table for sample 8 : sample 8

Peak	Size [bp]	Conc. [pg/μl]	Molarity [pmol/l]	Observations
1	0	0.00	0.0	
2	0	0.00	0.0	
3	0	0.00	0.0	
4	0	0.00	0.0	
5	0	0.00	0.0	
6	0	0.00	0.0	
7	0	0.00	0.0	

Assay Class: High Sensitivity DNA Assay
 Data Path: C:\...ents and Settings\Bioanalyzer\2013-08-23\2013-08-23_001.xad

Created: 8/23/2013 3:17:11 PM
 Modified: 8/23/2013 3:58:31 PM

Electropherogram Summary Continued ...



Overall Results for sample 9 : sample 9

Number of peaks found: 46 Corr. Area 1: 7,018.4
 Noise: 1.1

Peak table for sample 9 : sample 9

Peak	Size [bp]	Conc. [pg/μl]	Molarity [pmol/l]	Observations
1	35	125.00	5,411.3	Lower Marker
2	39	5,263.05	204,373.4	
3	58	3,278.57	86,338.6	
4	76	1,600.25	32,110.9	
5	84	1,301.12	23,510.5	
6	104	7,442.30	108,363.5	
7	116	179,571.88	2,352,000.8	
8	156	631.97	6,124.5	
9	168	3,163.83	28,519.9	
10	180	6,007.52	50,487.1	
11	195	9,160.12	71,059.7	
12	208	4,729.56	34,529.8	
13	220	5,869.39	40,470.9	
14	242	4,329.77	27,077.8	
15	265	7,784.89	44,542.1	
16	307	2,543.78	12,555.2	
17	314	3,411.57	16,451.9	
18	351	23,278.88	100,429.6	
19	360	20,814.12	87,520.4	
20	384	8,191.70	32,291.3	
21	404	4,427.87	16,605.8	
22	420	2,054.54	7,419.3	
23	435	2,641.82	9,210.3	
24	446	4,100.69	13,935.1	
25	468	4,239.88	13,730.6	
26	506	2,788.37	8,347.2	

Assay Class: High Sensitivity DNA Assay
 Data Path: C:\...ents and Settings\Bioanalyzer\2013-08-23\2013-08-23_001.xad


Created: 8/23/2013 3:17:11 PM
 Modified: 8/23/2013 3:58:31 PM

Electropherogram Summary Continued ...

... Peak table for sample 9 : sample 9

Peak	Size [bp]	Conc. [pg/μl]	Molarity [pmol/l]	Observations
27	539	9,318.21	26,172.6	
28	581	2,061.44	5,375.3	
29	638	2,811.14	6,672.3	
30	652	1,385.87	3,220.3	
31	758	5,078.38	10,148.9	
32	814	1,819.94	3,386.7	
33	950	1,378.09	2,197.2	
34	1,048	1,670.50	2,415.2	
35	1,257	1,439.55	1,735.1	
36	1,424	6,021.36	6,405.1	
37	3,419	3,043.74	1,348.8	
38	4,969	2,103.98	641.6	
39	5,737	201.97	53.3	
40	5,939	305.00	77.8	
41	6,279	246.39	59.5	
42	6,619	125.26	28.7	
43	7,186	105.52	22.2	
44	8,510	81.10	14.4	
45	9,172	101.78	16.8	
46	10,380	75.00	10.9	Upper Marker
47	11,549	0.00	0.0	
48	12,133	0.00	0.0	

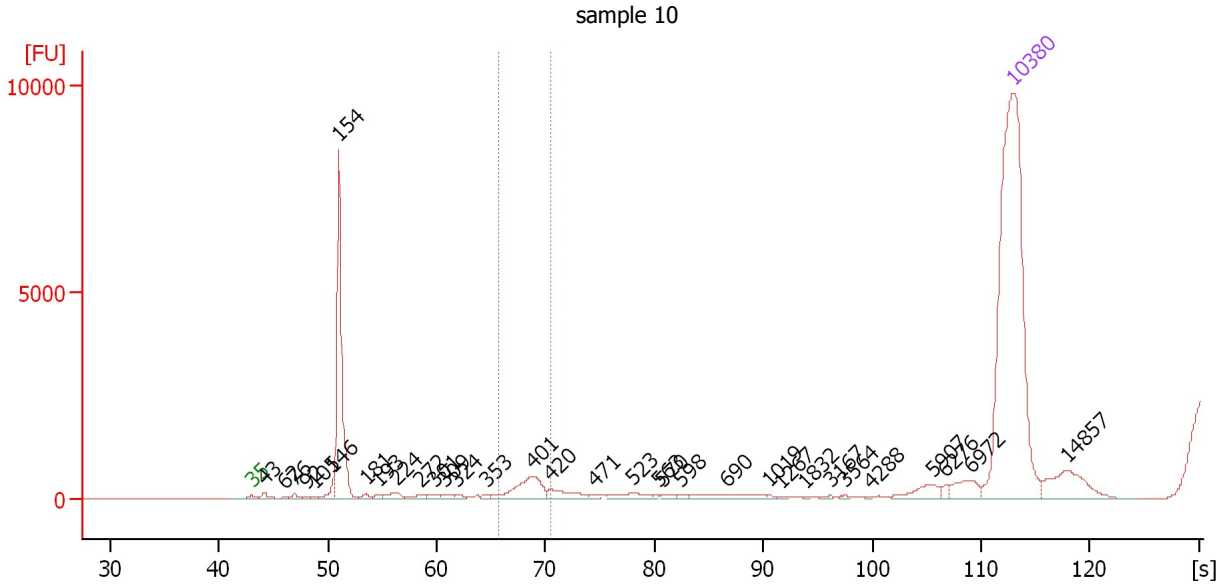
Region table for sample 9 : sample 9

From [bp]	To [bp]	Average Size [bp]	Molarity [pmol/l]	Conc. [pg/μl]	Corr. Area	% of Total	Size distribution in CV [%]	Color
200	1,000	445	540,458.4	132,358.73	7,018.4	42	37.1	

Assay Class: High Sensitivity DNA Assay
 Data Path: C:\...ents and Settings\Bioanalyzer\2013-08-23\2013-08-23_001.xad

Created: 8/23/2013 3:17:11 PM
 Modified: 8/23/2013 3:58:31 PM

Electropherogram Summary Continued ...



Overall Results for sample 10 : sample 10

Number of peaks found: 33 Corr. Area 1: 0.0
 Noise: 0.6

Peak table for sample 10 : sample 10

Peak	Size [bp]	Conc. [pg/μl]	Molarity [pmol/l]	Observations
1	35	125.00	5,411.3	Lower Marker
2	43	1.61	57.2	
3	62	0.26	6.3	
4	76	1.23	24.6	
5	92	0.39	6.5	
6	105	0.31	4.5	
7	146	3.01	31.3	
8	154	53.56	527.0	
9	181	1.03	8.6	
10	193	0.90	7.1	
11	224	2.14	14.5	
12	272	1.21	6.7	
13	301	0.99	5.0	
14	309	1.04	5.1	
15	324	0.65	3.1	
16	353	0.54	2.3	
17	401	10.40	39.3	
18	420	4.20	15.1	
19	471	0.70	2.3	
20	523	2.98	8.6	
21	563	0.44	1.2	
22	570	0.93	2.5	
23	598	0.69	1.8	
24	690	4.05	8.9	
25	1,019	0.32	0.5	
26	1,267	0.31	0.4	

Assay Class: High Sensitivity DNA Assay
 Data Path: C:\...ents and Settings\Bioanalyzer\2013-08-23\2013-08-23_001.xad


Created: 8/23/2013 3:17:11 PM
 Modified: 8/23/2013 3:58:31 PM

Electropherogram Summary Continued ...

... Peak table for sample 10 : sample 10

Peak	Size [bp]	Conc. [pg/μl]	Molarity [pmol/l]	Observations
27	1,832	0.20	0.2	
28	3,167	0.42	0.2	
29	3,564	0.34	0.1	
30	4,288	0.19	0.1	
31	5,907	3.51	0.9	
32	6,276	0.72	0.2	
33	6,972	4.16	0.9	
34	10,380	75.00	10.9	Upper Marker
35	14,857	0.00	0.0	

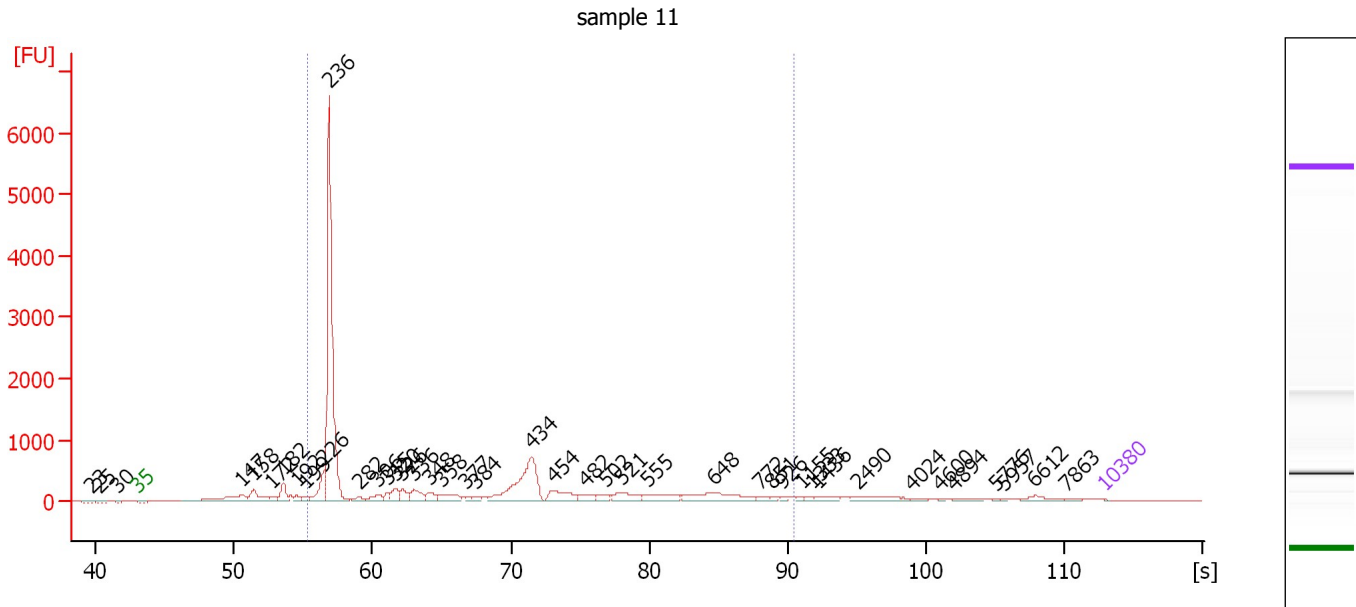
Region table for sample 10 : sample 10

From [bp]	To [bp]	Average Size [bp]	Molarity [pmol/l]	Conc. [pg/μl]	Corr. Area	% of Total	Size distribution in CV [%]	Color
365	422	0	0.0	0.00	0.0	0	0.0	

Assay Class: High Sensitivity DNA Assay
 Data Path: C:\...ents and Settings\Bioanalyzer\2013-08-23\2013-08-23_001.xad

Created: 8/23/2013 3:17:11 PM
 Modified: 8/23/2013 3:58:31 PM

Electropherogram Summary Continued ...



Overall Results for sample 11 : sample 11

Number of peaks found: 42 Corr. Area 1: 13,128.9
 Noise: 0.5

Peak table for sample 11 : sample 11

Peak	Size [bp]	Conc. [pg/μl]	Molarity [pmol/l]	Observations
1	23	0.00	0.0	
2	25	0.00	0.0	
3	30	0.00	0.0	
4	35	125.00	5,411.3	Lower Marker
5	147	24,968.17	256,751.9	
6	158	15,849.90	151,909.4	
7	172	4,040.82	35,685.1	
8	182	12,424.65	103,617.5	
9	192	3,954.56	31,172.6	
10	199	3,570.29	27,190.0	
11	226	17,270.22	115,931.2	
12	236	201,138.94	1,292,310.6	
13	282	4,191.82	22,509.0	
14	306	6,220.54	30,804.3	
15	315	3,872.35	18,650.2	
16	320	7,390.12	34,969.5	
17	326	7,605.49	35,322.5	
18	336	10,155.52	45,832.7	
19	348	6,102.05	26,550.0	
20	358	9,882.31	41,857.4	
21	377	2,274.20	9,136.9	
22	384	2,777.46	10,946.0	
23	434	53,472.16	186,813.5	
24	454	13,935.58	46,517.1	
25	482	6,058.68	19,032.8	
26	502	4,804.68	14,514.9	

Assay Class: High Sensitivity DNA Assay
 Data Path: C:\...ents and Settings\Bioanalyzer\2013-08-23\2013-08-23_001.xad


Created: 8/23/2013 3:17:11 PM
 Modified: 8/23/2013 3:58:31 PM

Electropherogram Summary Continued ...

... Peak table for sample 11 : sample 11

Peak	Size [bp]	Conc. [pg/µl]	Molarity [pmol/l]	Observations
27	521	10,150.62	29,506.3	
28	555	10,956.96	29,938.9	
29	648	18,912.14	44,250.2	
30	772	2,243.77	4,403.8	
31	851	1,523.80	2,713.0	
32	926	1,273.01	2,082.0	
33	1,155	1,025.62	1,345.4	
34	1,333	1,571.59	1,786.0	
35	1,436	3,604.96	3,802.5	
36	2,490	5,874.56	3,574.5	
37	4,024	1,252.13	471.5	
38	4,600	431.97	142.3	
39	4,894	1,613.79	499.6	
40	5,776	289.61	76.0	
41	5,957	273.54	69.6	
42	6,612	2,612.50	598.6	
43	7,863	432.19	83.3	
44	10,380	75.00	10.9	Upper Marker

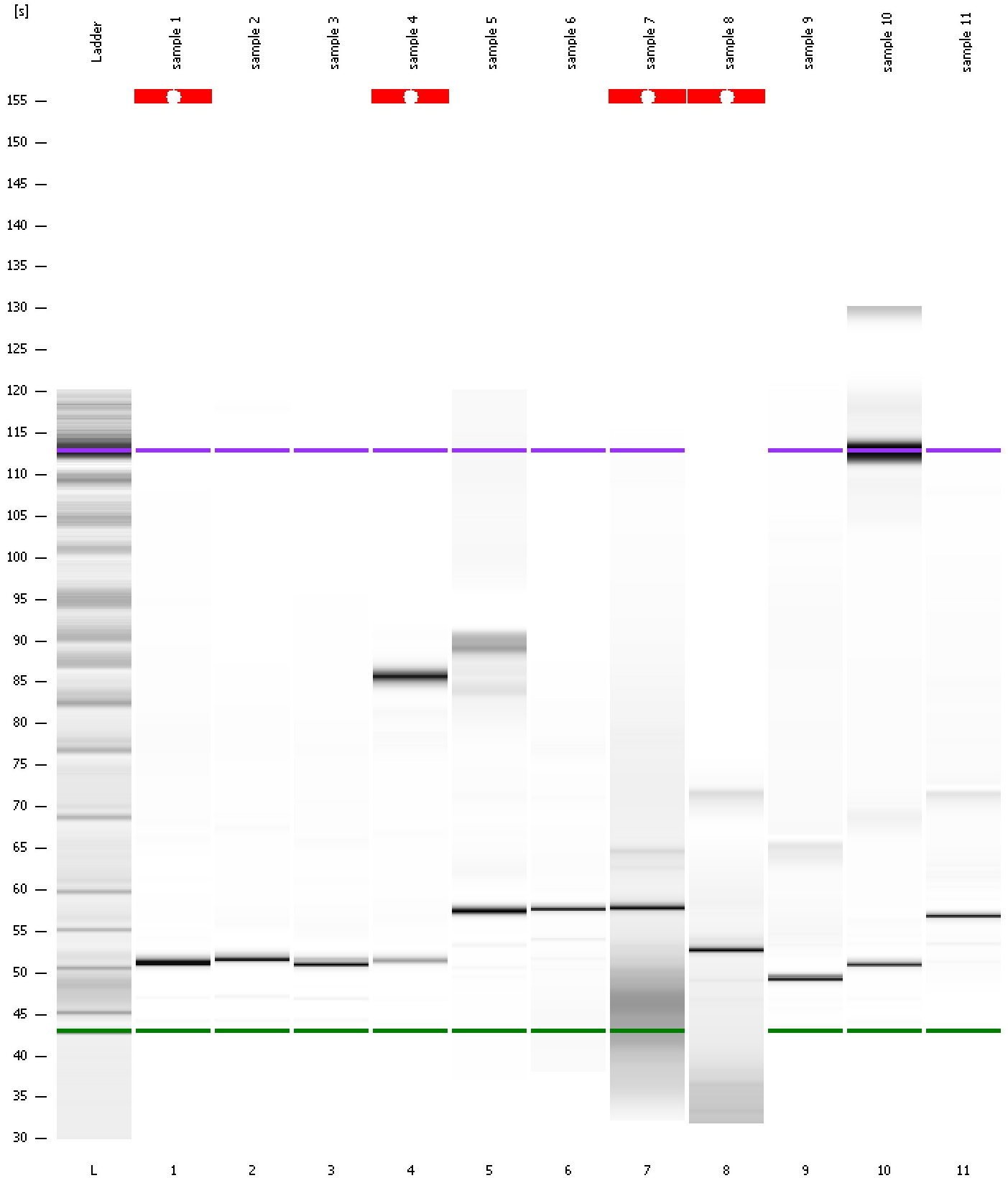
Region table for sample 11 : sample 11

From [bp]	To [bp]	Average Size [bp]	Molarity [pmol/l]	Conc. [pg/µl]	Corr. Area	% of Total	Size distribution in CV [%]	Color
200	1,000	374	1,999,044.5	390,349.31	13,128.9	83	42.2	

Assay Class: High Sensitivity DNA Assay
Data Path: C:\...ents and Settings\Bioanalyzer\2013-08-23\2013-08-23_001.xad

Created: 8/23/2013 3:17:11 PM
Modified: 8/23/2013 3:58:31 PM

Gel Image



Assay Class: High Sensitivity DNA Assay
 Data Path: C:\...ents and Settings\Bioanalyzer\2013-08-23\2013-08-23_001.xad

Created: 8/23/2013 3:17:11 PM
 Modified: 8/23/2013 3:58:31 PM

Run Logbook

Description	Number	Source	Category	Sub Category	Time	Time Zone	User	Host
Run ended on port 1 (Number of wells acquired: 12)		Instrument	Run		8/23/2013 3:58:28 PM	(GMT --07:00) Pacific Standard Time	UC Davis	D8XSMGH1
Instrument error occurred on port 1, Optical signal too high (1605h)	559	Instrument	Run	Sample 4	8/23/2013 3:38:00 PM	(GMT --07:00) Pacific Standard Time	UC Davis	D8XSMGH1
Instrument error occurred on port 1, Optical signal too high (1605h)	559	Instrument	Run	Sample 1	8/23/2013 3:28:57 PM	(GMT --07:00) Pacific Standard Time	UC Davis	D8XSMGH1
Run started on port 1 (File: C:\Documents and Settings\Bioanalyzer\2013-08-23\2013-08-23_001.xad)		Instrument	Run		8/23/2013 3:17:16 PM	(GMT --07:00) Pacific Standard Time	UC Davis	D8XSMGH1
Product Number : G2938B		Instrument	Run		8/23/2013 3:17:16 PM	(GMT --07:00) Pacific Standard Time	UC Davis	D8XSMGH1
Name :		Instrument	Run		8/23/2013 3:17:16 PM	(GMT --07:00) Pacific Standard Time	UC Davis	D8XSMGH1
Vendor : Agilent Technologies		Instrument	Run		8/23/2013 3:17:16 PM	(GMT --07:00) Pacific Standard Time	UC Davis	D8XSMGH1
Serial# : DE13701086		Instrument	Run		8/23/2013 3:17:16 PM	(GMT --07:00) Pacific Standard Time	UC Davis	D8XSMGH1
Firmware : C.01.069		Instrument	Run		8/23/2013 3:17:16 PM	(GMT --07:00) Pacific Standard Time	UC Davis	D8XSMGH1
Cartridge : Electrode		Instrument	Run		8/23/2013 3:17:16 PM	(GMT --07:00) Pacific Standard Time	UC Davis	D8XSMGH1