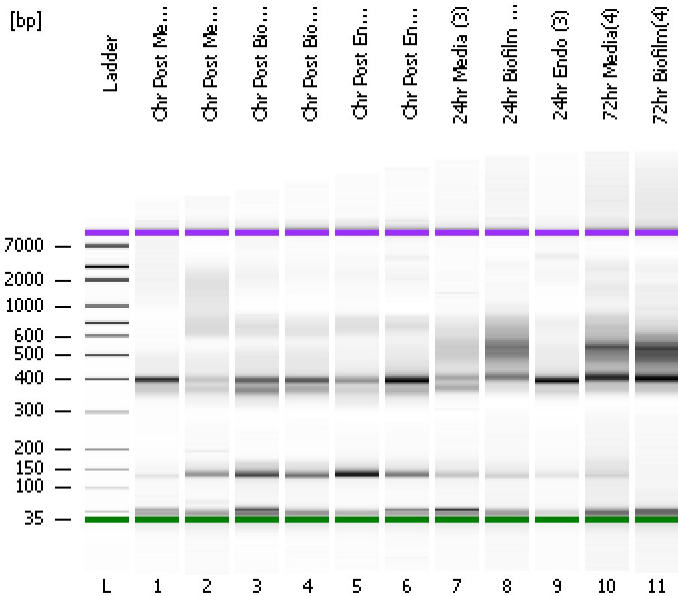


Assay Class: High Sensitivity DNA Assay
 Data Path: C:\...ents and Settings\Bioanalyzer\2013-08-26\2013-08-26_003.xad

Created: 8/26/2013 3:29:58 PM
 Modified: 8/26/2013 4:13:00 PM

Electrophoresis File Run Summary



Instrument Information:

Instrument Name: DE13701086 Firmware: C.01.069
 Serial#: DE13701086 Type: G2938B

Assay Information:

Assay Origin Path: C:\Program Files\Agilent\2100 bioanalyzer\2100 expert\assays\dsDNA\High Sensitivity DNA.xsy
 Assay Class: High Sensitivity DNA Assay
 Version: 1.03
 Assay Comments: Copyright © 2003-2010 Agilent Technologies

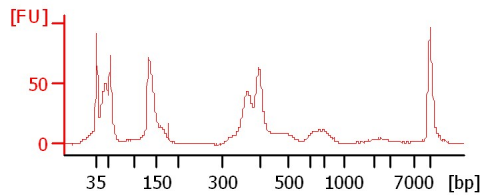
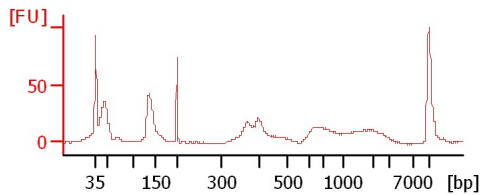
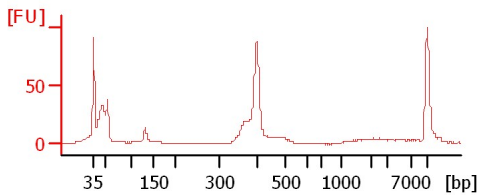
Chip Information:

Chip Lot #: Reagent Kit Lot #:
 Chip Comments:

Ohr Post Media(1)

Ohr Post Media(2)

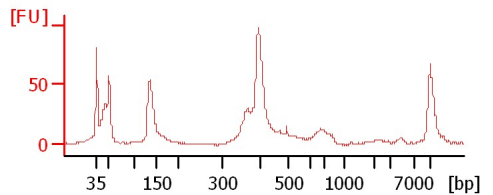
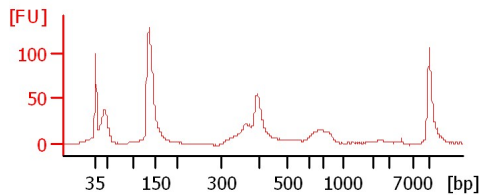
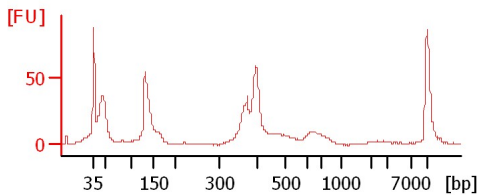
Ohr Post Biofilm(1)



Ohr Post Biofilm(2)

Ohr Post Endo(1)

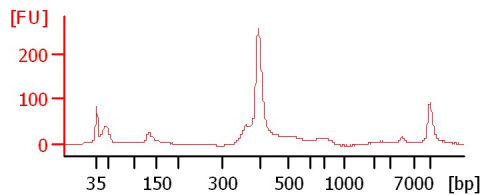
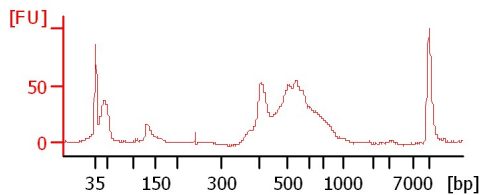
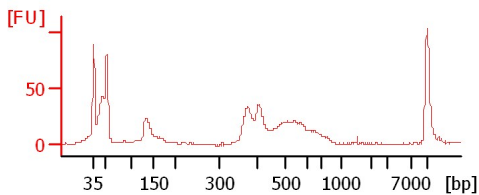
Ohr Post Endo(1)



24hr Media (3)

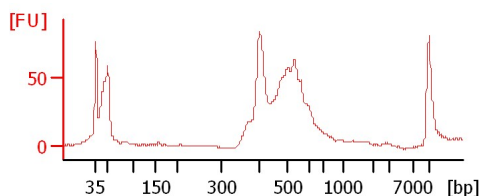
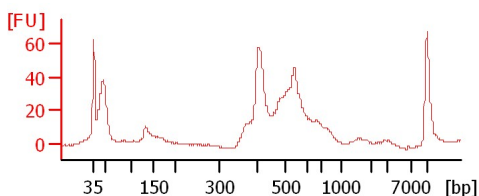
24hr Biofilm (3)

24hr Endo (3)



72hr Media(4)

72hr Biofilm(4)



Assay Class: High Sensitivity DNA Assay
Data Path: C:\...ents and Settings\Bioanalyzer\2013-08-26\2013-08-26_003.xad

Created: 8/26/2013 3:29:58 PM
Modified: 8/26/2013 4:13:00 PM

Electrophoresis File Run Summary (Chip Summary)

Sample Name	Sample Comment	Rest. Digest	Status	Observation	Result Label	Result Color
Ohr Post Media(1)		<input type="checkbox"/>	✓			
Ohr Post Media(2)		<input type="checkbox"/>	✓			
Ohr Post Biofilm(1)		<input type="checkbox"/>	✓			
Ohr Post Biofilm(2)		<input type="checkbox"/>	✓			
Ohr Post Endo(1)		<input type="checkbox"/>	✓			
Ohr Post Endo(1)		<input type="checkbox"/>	✓			
24hr Media (3)		<input type="checkbox"/>	✓			
24hr Biofilm (3)		<input type="checkbox"/>	✓			
24hr Endo (3)		<input type="checkbox"/>	✓			
72hr Media(4)		<input type="checkbox"/>	✓			
72hr Biofilm(4)		<input type="checkbox"/>	✓			
Ladder		<input type="checkbox"/>	✓			

Chip Lot #

Reagent Kit Lot #

Chip Comments :

Assay Class: High Sensitivity DNA Assay
 Data Path: C:\...ents and Settings\Bioanalyzer\2013-08-26\2013-08-26_003.xad

Created: 8/26/2013 3:29:58 PM
 Modified: 8/26/2013 4:13:00 PM

Electrophoresis Assay Details

General Analysis Settings

Number of Available Sample and Ladder Wells (Max.) : 12
 Minimum Visible Range [s] : 32
 Maximum Visible Range [s] : 138
 Start Analysis Time Range [s] : 33
 End Analysis Time Range [s] : 137.5
 Ladder Concentration [pg/μl] : 1950
 Uses Standard Area for Ladder Fragments
 Lower Marker Concentration [pg/μl] : 125
 Upper Marker Concentration [pg/μl] : 75
 Used Upper Marker for Quantitation
 Standard Curve Fit is Point to Point
 Show Data Aligned to Lower and Upper Marker

Integrator Settings

Integration Start Time [s] : 33.05
 Integration End Time [s] : 137
 Slope Threshold : 0.8
 Height Threshold [FU] : 5
 Area Threshold : 0.1
 Width Threshold [s] : 0.6
 Baseline Plateau [s] : 0.5

Filter Settings

Filter Width [s] : 0.5
 Polynomial Order : 4

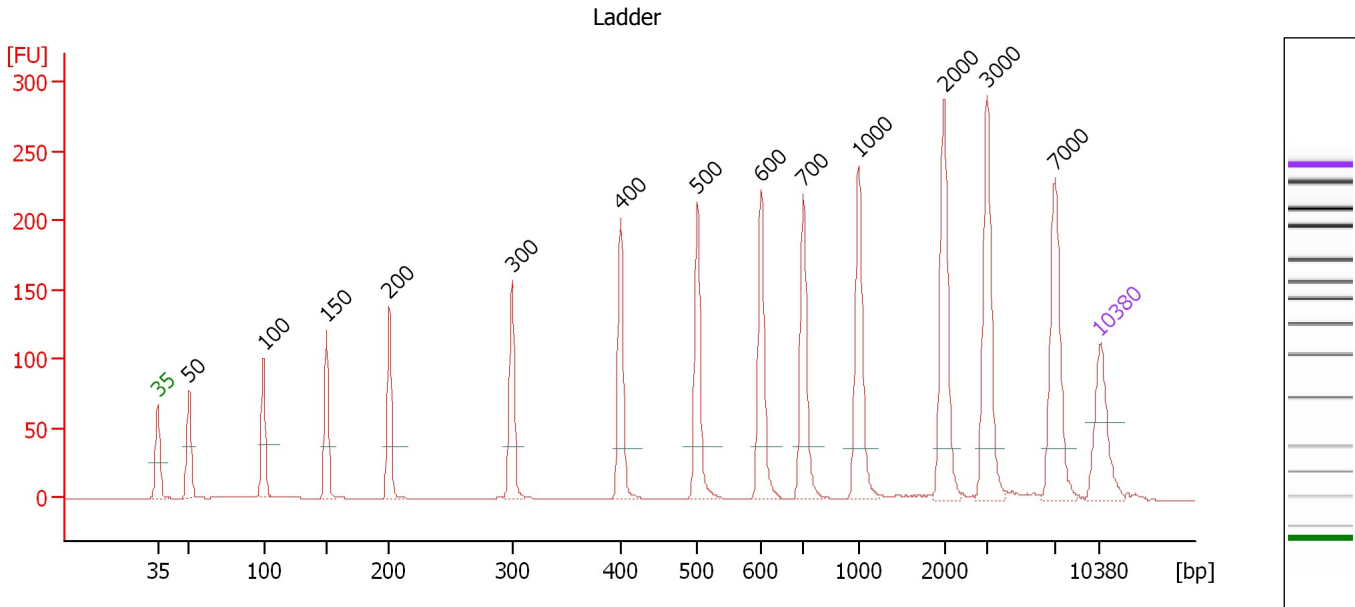
Ladder

Ladder Peak	Size	Area
1	35	160
2	50	210
3	100	208
4	150	221
5	200	242
6	300	270
7	400	305
8	500	306
9	600	336
10	700	321
11	1000	366
12	2000	413
13	3000	411
14	7000	400
15	10380	214

Assay Class: High Sensitivity DNA Assay
 Data Path: C:\...ents and Settings\Bioanalyzer\2013-08-26\2013-08-26_003.xad

Created: 8/26/2013 3:29:58 PM
 Modified: 8/26/2013 4:13:00 PM

Electropherogram Summary



Overall Results for Ladder

Noise: 0.2

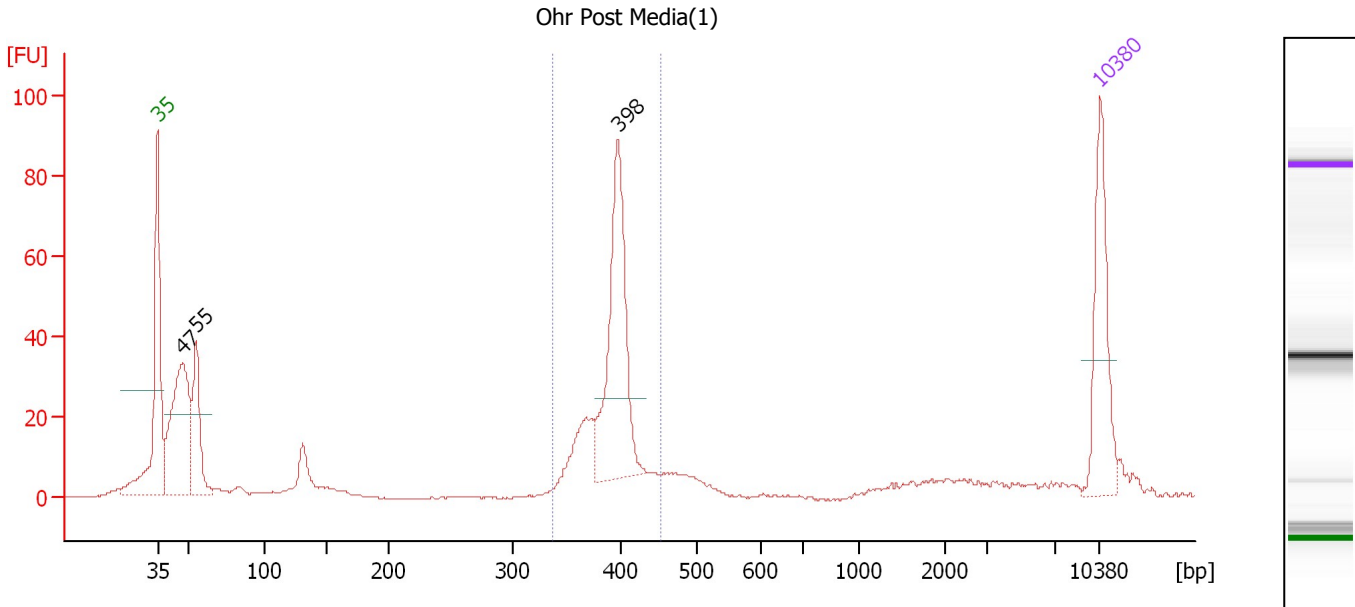
Peak table for Ladder

Peak	Size [bp]	Conc. [pg/μl]	Molarity [pmol/l]	Observations
1	35	125.00	5,411.3	Lower Marker
2	50	150.00	4,545.5	Ladder Peak
3	100	150.00	2,272.7	Ladder Peak
4	150	150.00	1,515.2	Ladder Peak
5	200	150.00	1,136.4	Ladder Peak
6	300	150.00	757.6	Ladder Peak
7	400	150.00	568.2	Ladder Peak
8	500	150.00	454.5	Ladder Peak
9	600	150.00	378.8	Ladder Peak
10	700	150.00	324.7	Ladder Peak
11	1,000	150.00	227.3	Ladder Peak
12	2,000	150.00	113.6	Ladder Peak
13	3,000	150.00	75.8	Ladder Peak
14	7,000	150.00	32.5	Ladder Peak
15	10,380	75.00	10.9	Upper Marker

Assay Class: High Sensitivity DNA Assay
 Data Path: C:\...ents and Settings\Bioanalyzer\2013-08-26\2013-08-26_003.xad

Created: 8/26/2013 3:29:58 PM
 Modified: 8/26/2013 4:13:00 PM

Electropherogram Summary Continued ...



Setpoint Deviations for sample 1 : Ohr Post Media(1)

Height Threshold [FU] : 20

Overall Results for sample 1 : Ohr Post Media(1)

Number of peaks found: 3 Corr. Area 1: 242.1
 Noise: 0.2

Peak table for sample 1 : Ohr Post Media(1)

Peak	Size [bp]	Conc. [pg/µl]	Molarity [pmol/l]	Observations
1	35	125.00	5,411.3	Lower Marker
2	47	194.44	6,278.6	
3	55	89.02	2,470.1	
4	398	178.29	679.4	
5	10,380	75.00	10.9	Upper Marker

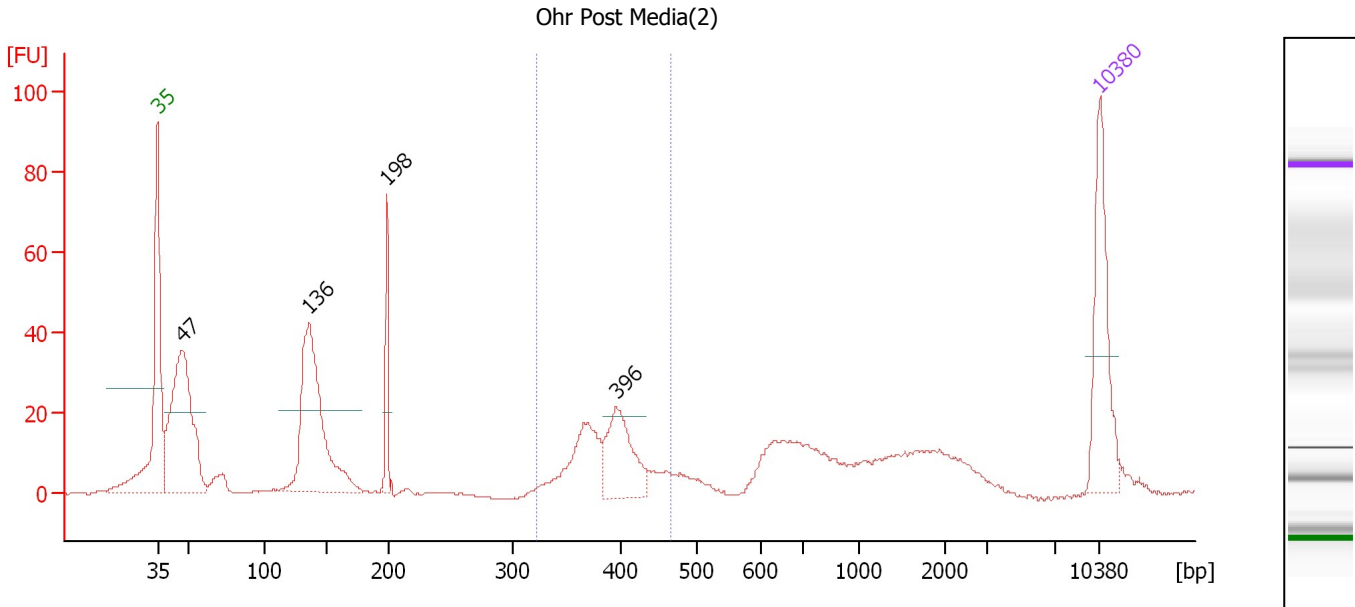
Region table for sample 1 : Ohr Post Media(1)

From [bp]	To [bp]	Average Size [bp]	Molarity [pmol/l]	Conc. [pg/µl]	Corr. Area	% of Total	Size distribution in CV [%]	Color
337	452	392	1,051.3	271.42	242.1	44	5.0	Blue

Assay Class: High Sensitivity DNA Assay
 Data Path: C:\...ents and Settings\Bioanalyzer\2013-08-26\2013-08-26_003.xad

Created: 8/26/2013 3:29:58 PM
 Modified: 8/26/2013 4:13:00 PM

Electropherogram Summary Continued ...



Setpoint Deviations for sample 2 : Ohr Post Media(2)

Height Threshold [FU] : 20

Overall Results for sample 2 : Ohr Post Media(2)

Number of peaks found: 4 Corr. Area 1: 130.0
 Noise: 0.2

Peak table for sample 2 : Ohr Post Media(2)

Peak	Size [bp]	Conc. [pg/µl]	Molarity [pmol/l]	Observations
1	35	125.00	5,411.3	Lower Marker
2	47	250.69	8,132.9	
3	136	221.99	2,472.8	
4	198	41.96	320.6	
5	396	73.91	282.8	
6	10,380	75.00	10.9	Upper Marker

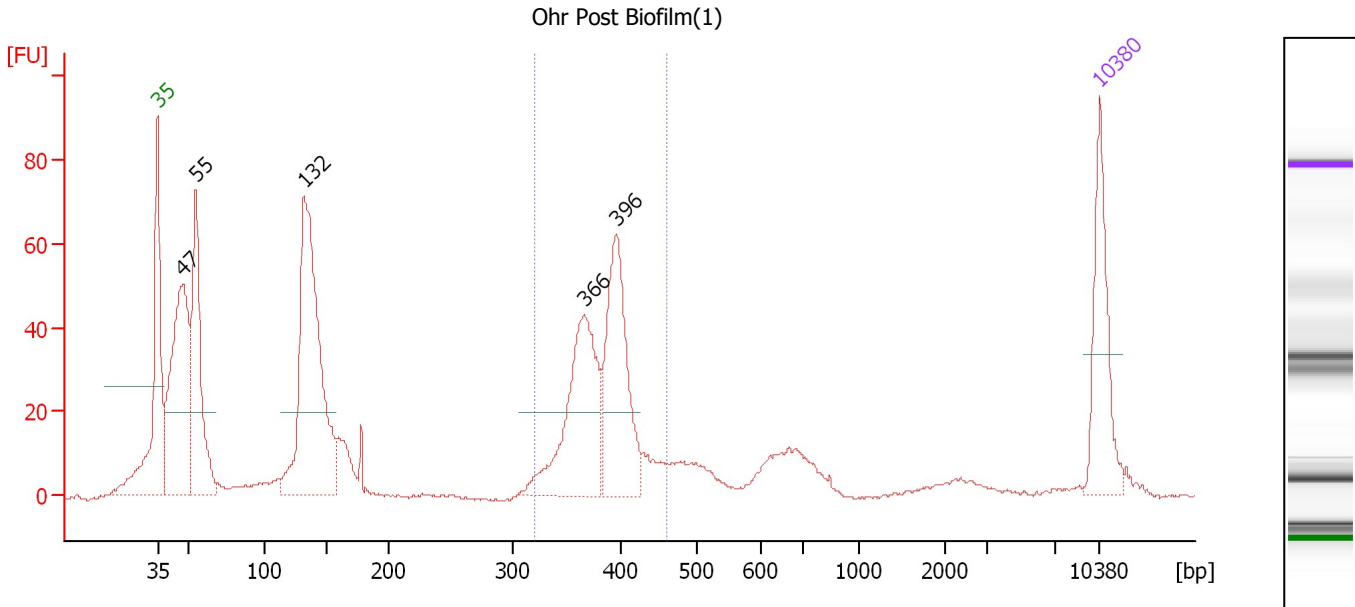
Region table for sample 2 : Ohr Post Media(2)

From [bp]	To [bp]	Average Size [bp]	Molarity [pmol/l]	Conc. [pg/µl]	Corr. Area	% of Total	Size distribution in CV [%]	Color
323	466	390	573.9	146.78	130.0	19	7.6	Blue

Assay Class: High Sensitivity DNA Assay
 Data Path: C:\...ents and Settings\Bioanalyzer\2013-08-26\2013-08-26_003.xad

Created: 8/26/2013 3:29:58 PM
 Modified: 8/26/2013 4:13:00 PM

Electropherogram Summary Continued ...



Setpoint Deviations for sample 3 : Ohr Post Biofilm(1)

Height Threshold [FU] : 20

Overall Results for sample 3 : Ohr Post Biofilm(1)

Number of peaks found: 5 Corr. Area 1: 321.8
 Noise: 0.4

Peak table for sample 3 : Ohr Post Biofilm(1)

Peak	Size [bp]	Conc. [pg/μl]	Molarity [pmol/l]	Observations
1	35	125.00	5,411.3	Lower Marker
2	47	295.14	9,481.8	
3	55	210.45	5,827.1	
4	132	381.94	4,378.2	
5	366	185.49	767.1	
6	396	166.16	636.1	
7	10,380	75.00	10.9	Upper Marker

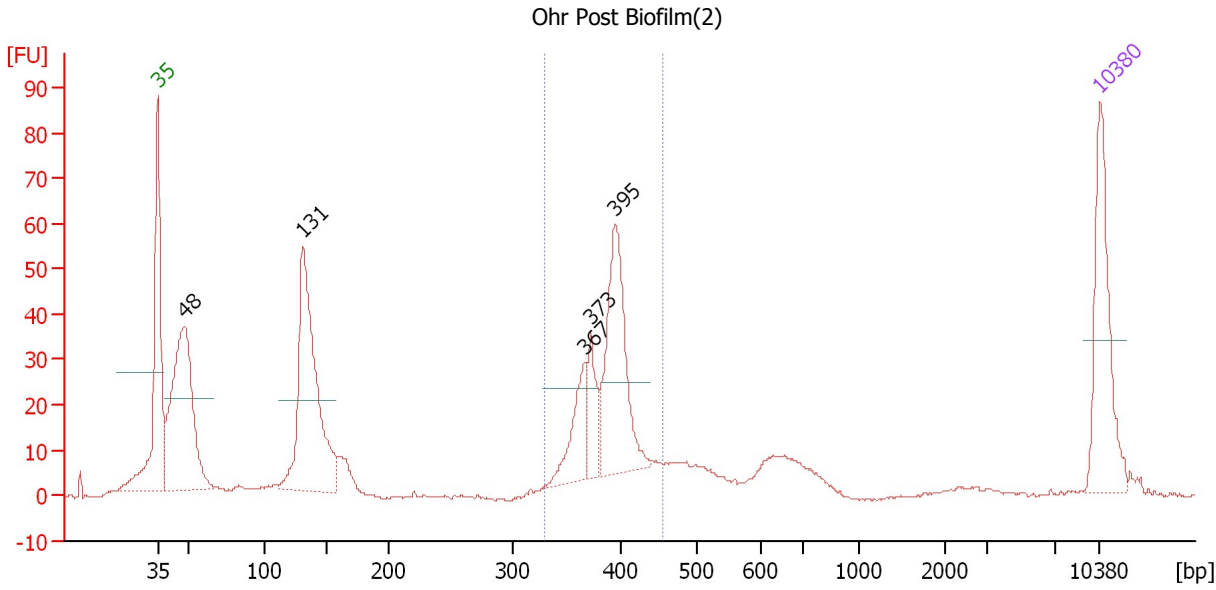
Region table for sample 3 : Ohr Post Biofilm(1)

From [bp]	To [bp]	Average Size [bp]	Molarity [pmol/l]	Conc. [pg/μl]	Corr. Area	% of Total	Size distribution in CV [%]	Color
320	460	384	1,467.9	370.41	321.8	31	6.9	Blue

Assay Class: High Sensitivity DNA Assay
 Data Path: C:\...ents and Settings\Bioanalyzer\2013-08-26\2013-08-26_003.xad

Created: 8/26/2013 3:29:58 PM
 Modified: 8/26/2013 4:13:00 PM

Electropherogram Summary Continued ...



Setpoint Deviations for sample 4 : Ohr Post Biofilm(2)

Height Threshold [FU] : 20

Overall Results for sample 4 : Ohr Post Biofilm(2)

Number of peaks found: 5 Corr. Area 1: 245.4
 Noise: 0.4

Peak table for sample 4 : Ohr Post Biofilm(2)

Peak	Size [bp]	Conc. [pg/µl]	Molarity [pmol/l]	Observations
1	35	125.00	5,411.3	Lower Marker
2	48	248.72	7,901.9	
3	131	253.64	2,930.8	
4	367	51.93	214.4	
5	373	34.95	142.1	
6	395	134.33	514.9	
7	10,380	75.00	10.9	Upper Marker

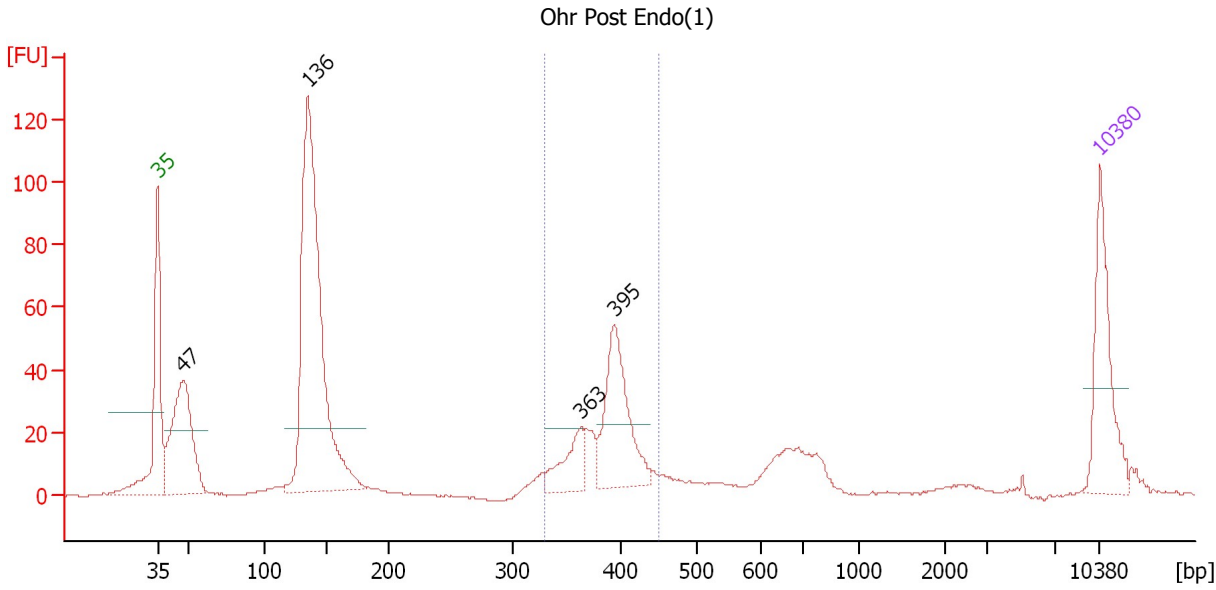
Region table for sample 4 : Ohr Post Biofilm(2)

From [bp]	To [bp]	Average Size [bp]	Molarity [pmol/l]	Conc. [pg/µl]	Corr. Area	% of Total	Size distribution in CV [%]	Color
329	453	388	1,094.1	279.42	245.4	34	6.0	Blue

Assay Class: High Sensitivity DNA Assay
 Data Path: C:\...ents and Settings\Bioanalyzer\2013-08-26\2013-08-26_003.xad

Created: 8/26/2013 3:29:58 PM
 Modified: 8/26/2013 4:13:00 PM

Electropherogram Summary Continued ...



Setpoint Deviations for sample 5 : Ohr Post Endo(1)

Height Threshold [FU] : 20

Overall Results for sample 5 : Ohr Post Endo(1)

Number of peaks found: 4 Corr. Area 1: 231.9
 Noise: 0.3

Peak table for sample 5 : Ohr Post Endo(1)

Peak	Size [bp]	Conc. [pg/μl]	Molarity [pmol/l]	Observations
1	35	125.00	5,411.3	Lower Marker
2	47	200.25	6,412.2	
3	136	505.43	5,650.6	
4	363	47.01	196.0	
5	395	125.31	481.3	
6	10,380	75.00	10.9	Upper Marker

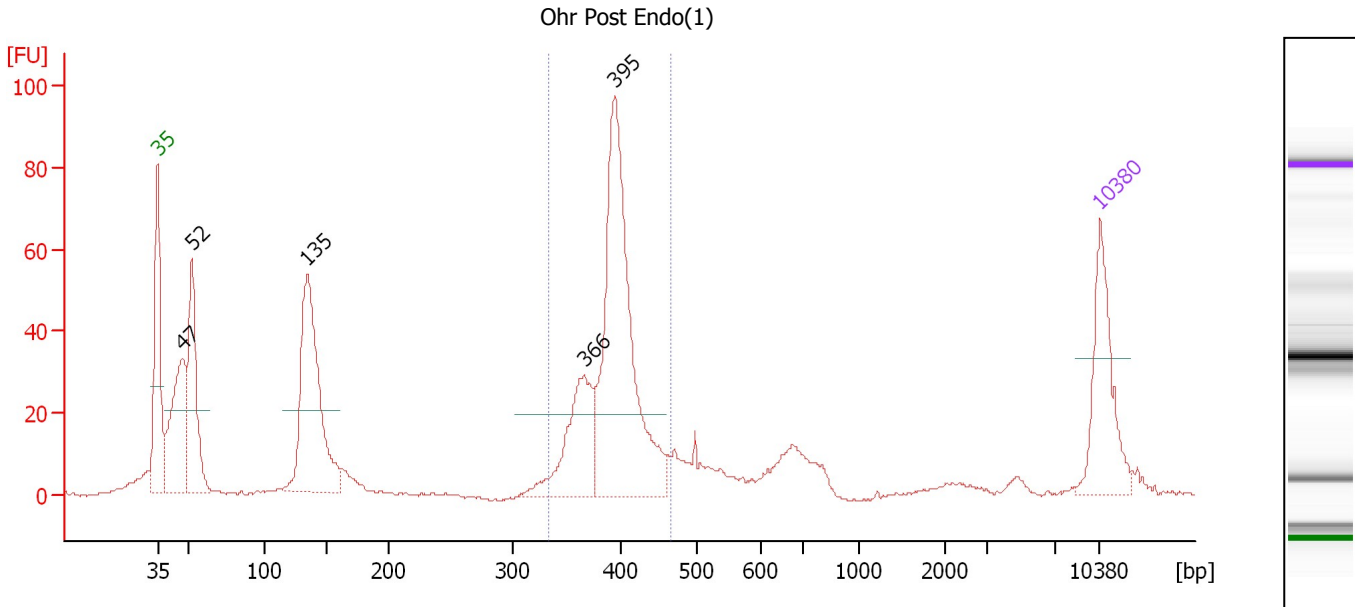
Region table for sample 5 : Ohr Post Endo(1)

From [bp]	To [bp]	Average Size [bp]	Molarity [pmol/l]	Conc. [pg/μl]	Corr. Area	% of Total	Size distribution in CV [%]	Color
330	450	387	849.6	216.50	231.9	25	6.6	Blue

Assay Class: High Sensitivity DNA Assay
 Data Path: C:\...ents and Settings\Bioanalyzer\2013-08-26\2013-08-26_003.xad

Created: 8/26/2013 3:29:58 PM
 Modified: 8/26/2013 4:13:00 PM

Electropherogram Summary Continued ...



Setpoint Deviations for sample 6 : Ohr Post Endo(1)

Height Threshold [FU] : 20

Overall Results for sample 6 : Ohr Post Endo(1)

Number of peaks found: 5 Corr. Area 1: 369.1
 Noise: 0.4

Peak table for sample 6 : Ohr Post Endo(1)

Peak	Size [bp]	Conc. [pg/μl]	Molarity [pmol/l]	Observations
1	35	125.00	5,411.3	Lower Marker
2	47	161.81	5,227.3	
3	52	146.30	4,270.7	
4	135	258.65	2,907.4	
5	366	111.80	462.5	
6	395	329.37	1,263.8	
7	10,380	75.00	10.9	Upper Marker

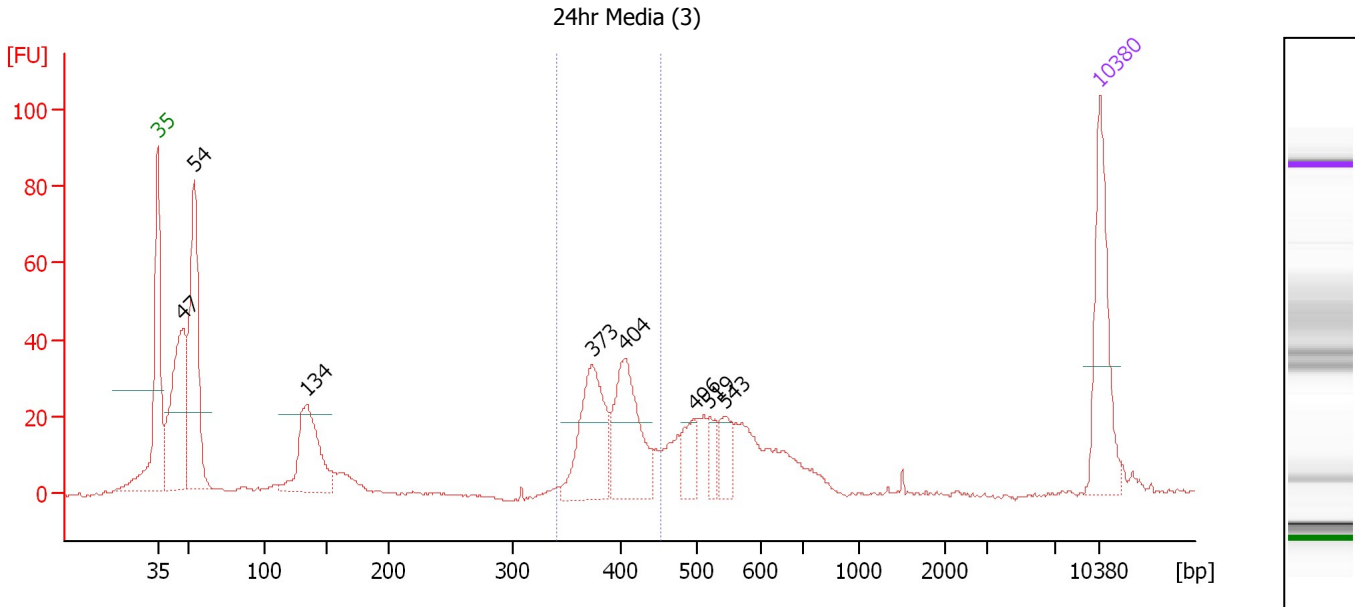
Region table for sample 6 : Ohr Post Endo(1)

From [bp]	To [bp]	Average Size [bp]	Molarity [pmol/l]	Conc. [pg/μl]	Corr. Area	% of Total	Size distribution in CV [%]	Color
333	466	394	1,654.2	428.72	369.1	41	6.4	Blue

Assay Class: High Sensitivity DNA Assay
 Data Path: C:\...ents and Settings\Bioanalyzer\2013-08-26\2013-08-26_003.xad

Created: 8/26/2013 3:29:58 PM
 Modified: 8/26/2013 4:13:00 PM

Electropherogram Summary Continued ...



Setpoint Deviations for sample 7 : 24hr Media (3)

Height Threshold [FU] : 20

Overall Results for sample 7 : 24hr Media (3)

Number of peaks found: 8 Corr. Area 1: 202.5
 Noise: 0.3

Peak table for sample 7 : 24hr Media (3)

Peak	Size [bp]	Conc. [pg/μl]	Molarity [pmol/l]	Observations
1	35	125.00	5,411.3	Lower Marker
2	47	189.88	6,103.8	
3	54	197.84	5,590.4	
4	134	111.99	1,265.4	
5	373	110.30	447.7	
6	404	106.37	398.6	
7	496	27.52	84.2	
8	519	17.80	52.0	
9	543	27.62	77.1	
10	10,380	75.00	10.9	Upper Marker

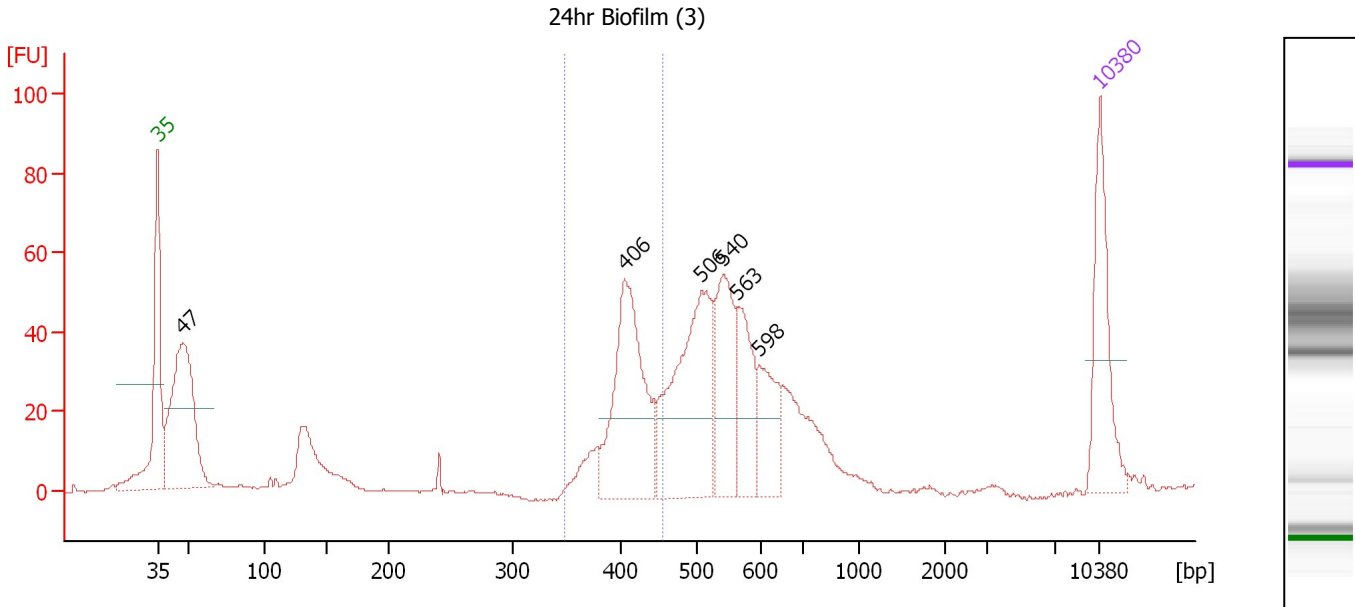
Region table for sample 7 : 24hr Media (3)

From [bp]	To [bp]	Average Size [bp]	Molarity [pmol/l]	Conc. [pg/μl]	Corr. Area	% of Total	Size distribution in CV [%]	Color
341	452	394	826.1	214.13	202.5	25	6.2	Blue

Assay Class: High Sensitivity DNA Assay
 Data Path: C:\...ents and Settings\Bioanalyzer\2013-08-26\2013-08-26_003.xad

Created: 8/26/2013 3:29:58 PM
 Modified: 8/26/2013 4:13:00 PM

Electropherogram Summary Continued ...



Setpoint Deviations for sample 8 : 24hr Biofilm (3)

Height Threshold [FU] : 20

Overall Results for sample 8 : 24hr Biofilm (3)

Number of peaks found: 6 Corr. Area 1: 209.7
 Noise: 0.2

Peak table for sample 8 : 24hr Biofilm (3)

Peak	Size [bp]	Conc. [pg/µl]	Molarity [pmol/l]	Observations
1	35	125.00	5,411.3	Lower Marker
2	47	245.53	7,926.2	
3	406	184.21	688.2	
4	506	198.90	595.5	
5	540	102.03	286.1	
6	563	73.88	199.0	
7	598	56.46	143.1	
8	10,380	75.00	10.9	Upper Marker

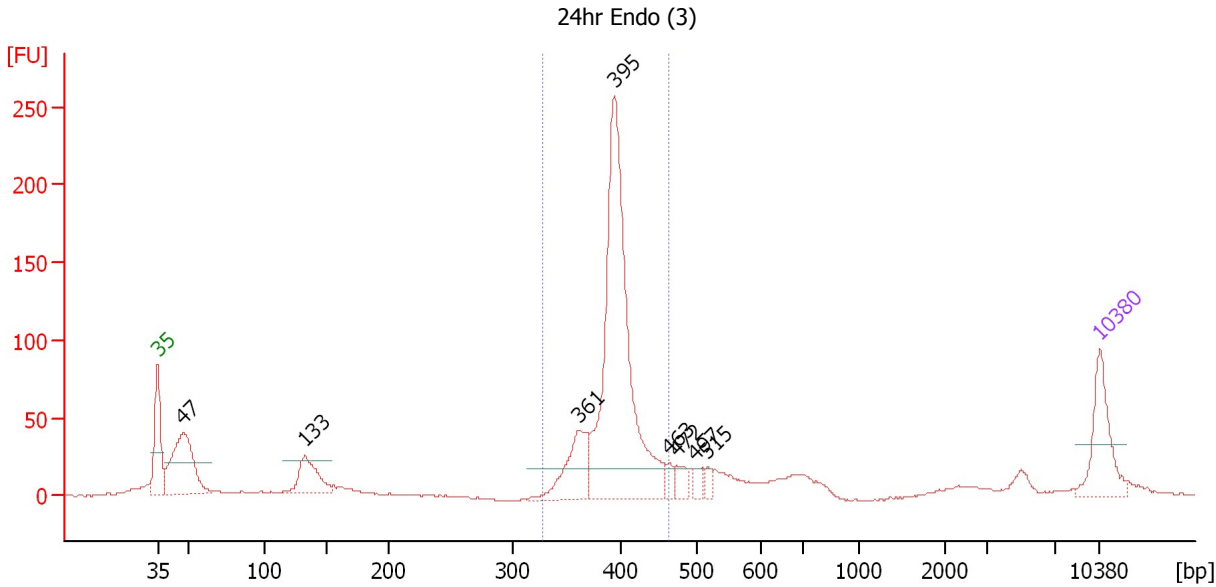
Region table for sample 8 : 24hr Biofilm (3)

From [bp]	To [bp]	Average Size [bp]	Molarity [pmol/l]	Conc. [pg/µl]	Corr. Area	% of Total	Size distribution in CV [%]	Color
349	456	411	805.4	217.78	209.7	21	5.6	Blue

Assay Class: High Sensitivity DNA Assay
 Data Path: C:\...ents and Settings\Bioanalyzer\2013-08-26\2013-08-26_003.xad

Created: 8/26/2013 3:29:58 PM
 Modified: 8/26/2013 4:13:00 PM

Electropherogram Summary Continued ...



Setpoint Deviations for sample 9 : 24hr Endo (3)

Height Threshold [FU] : 20

Overall Results for sample 9 : 24hr Endo (3)

Number of peaks found: 8 Corr. Area 1: 755.5
 Noise: 0.5

Peak table for sample 9 : 24hr Endo (3)

Peak	Size [bp]	Conc. [pg/μl]	Molarity [pmol/l]	Observations
1	35	125.00	5,411.3	Lower Marker
2	47	213.55	6,838.2	
3	133	90.20	1,025.3	
4	361	108.51	455.5	
5	395	603.51	2,316.5	
6	463	15.40	50.4	
7	472	24.05	77.2	
8	497	18.46	56.3	
9	515	12.93	38.0	
10	10,380	75.00	10.9	Upper Marker

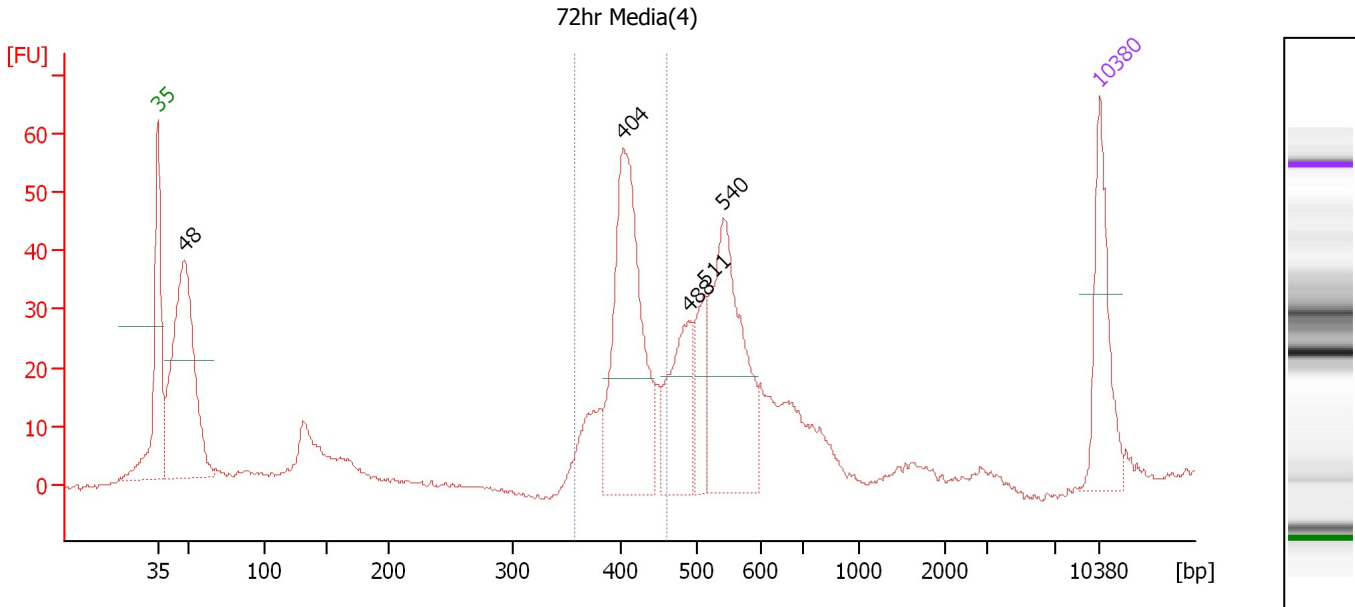
Region table for sample 9 : 24hr Endo (3)

From [bp]	To [bp]	Average Size [bp]	Molarity [pmol/l]	Conc. [pg/μl]	Corr. Area	% of Total	Size distribution in CV [%]	Color
328	464	396	2,642.2	688.23	755.5	56	5.7	Blue

Assay Class: High Sensitivity DNA Assay
 Data Path: C:\...ents and Settings\Bioanalyzer\2013-08-26\2013-08-26_003.xad

Created: 8/26/2013 3:29:58 PM
 Modified: 8/26/2013 4:13:00 PM

Electropherogram Summary Continued ...



Setpoint Deviations for sample 10 : 72hr Media(4)

Height Threshold [FU] : 20

Overall Results for sample 10 : 72hr Media(4)

Number of peaks found: 5 Corr. Area 1: 220.0
 Noise: 0.4

Peak table for sample 10 : 72hr Media(4)

Peak	Size [bp]	Conc. [pg/μl]	Molarity [pmol/l]	Observations
1	35	125.00	5,411.3	Lower Marker
2	48	338.79	10,757.3	
3	404	269.36	1,010.7	
4	488	100.08	310.9	
5	511	57.44	170.4	
6	540	208.11	583.5	
7	10,380	75.00	10.9	Upper Marker

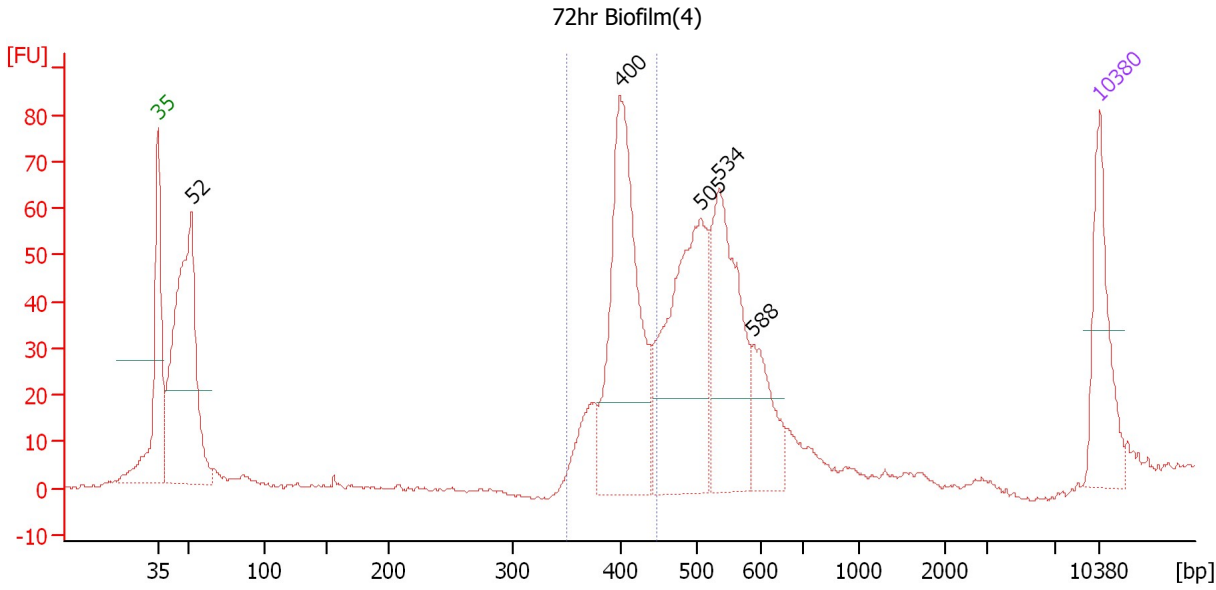
Region table for sample 10 : 72hr Media(4)

From [bp]	To [bp]	Average Size [bp]	Molarity [pmol/l]	Conc. [pg/μl]	Corr. Area	% of Total	Size distribution in CV [%]	Color
357	459	409	1,233.7	331.79	220.0	26	5.6	Blue

Assay Class: High Sensitivity DNA Assay
 Data Path: C:\...ents and Settings\Bioanalyzer\2013-08-26\2013-08-26_003.xad

Created: 8/26/2013 3:29:58 PM
 Modified: 8/26/2013 4:13:00 PM

Electropherogram Summary Continued ...



Setpoint Deviations for sample 11 : 72hr Biofilm(4)

Height Threshold [FU] : 20

Overall Results for sample 11 : 72hr Biofilm(4)

Number of peaks found: 5 Corr. Area 1: 305.4
 Noise: 0.4

Peak table for sample 11 : 72hr Biofilm(4)

Peak	Size [bp]	Conc. [pg/µl]	Molarity [pmol/l]	Observations
1	35	125.00	5,411.3	Lower Marker
2	52	378.86	11,095.8	
3	400	290.12	1,099.9	
4	505	264.18	792.1	
5	534	194.43	551.4	
6	588	69.50	179.1	
7	10,380	75.00	10.9	Upper Marker

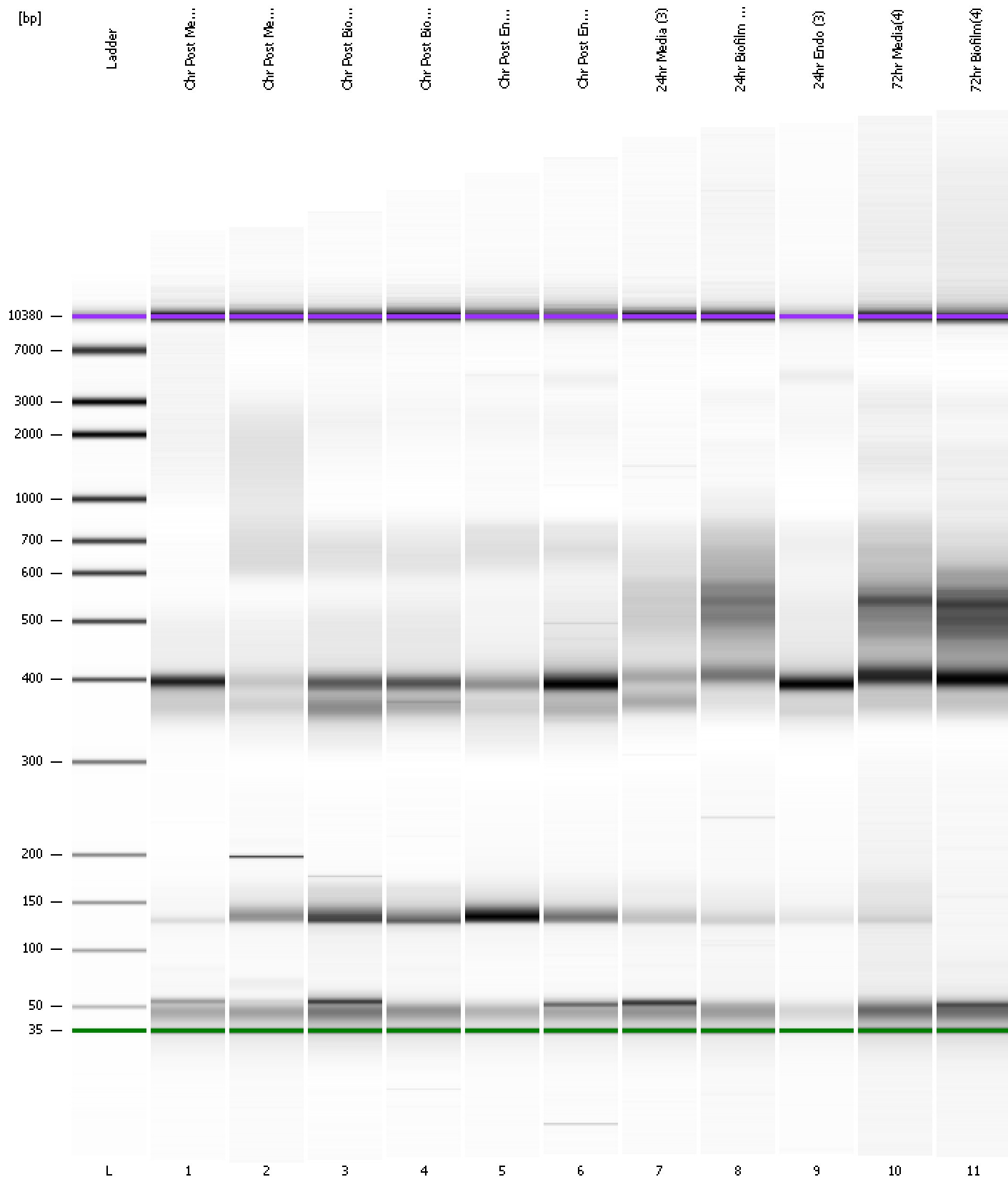
Region table for sample 11 : 72hr Biofilm(4)

From [bp]	To [bp]	Average Size [bp]	Molarity [pmol/l]	Conc. [pg/µl]	Corr. Area	% of Total	Size distribution in CV [%]	Color
350	447	403	1,316.5	349.58	305.4	26	5.2	Blue

Assay Class: High Sensitivity DNA Assay
Data Path: C:\...ents and Settings\Bioanalyzer\2013-08-26\2013-08-26_003.xad

Created: 8/26/2013 3:29:58 PM
Modified: 8/26/2013 4:13:00 PM

Gel Image



Assay Class: High Sensitivity DNA Assay
 Data Path: C:\...ents and Settings\Bioanalyzer\2013-08-26\2013-08-26_003.xad

Created: 8/26/2013 3:29:58 PM
 Modified: 8/26/2013 4:13:00 PM

Run Logbook

Description	Number	Source	Category	Sub Category	Time	Time Zone	User	Host
Run ended on port 1 (Number of wells acquired: 12)		Instrument	Run		8/26/2013 4:11:17 PM	(GMT --07:00) Pacific Standard Time	UC Davis	D8XSMGH1
Run started on port 1 (File: C:\Documents and Settings\Bioanalyzer\2013-08-26\2013-08-26_003.xad)		Instrument	Run		8/26/2013 3:30:03 PM	(GMT --07:00) Pacific Standard Time	UC Davis	D8XSMGH1
Product Number : G2938B		Instrument	Run		8/26/2013 3:30:03 PM	(GMT --07:00) Pacific Standard Time	UC Davis	D8XSMGH1
Name :		Instrument	Run		8/26/2013 3:30:03 PM	(GMT --07:00) Pacific Standard Time	UC Davis	D8XSMGH1
Vendor : Agilent Technologies		Instrument	Run		8/26/2013 3:30:03 PM	(GMT --07:00) Pacific Standard Time	UC Davis	D8XSMGH1
Serial# : DE13701086		Instrument	Run		8/26/2013 3:30:03 PM	(GMT --07:00) Pacific Standard Time	UC Davis	D8XSMGH1
Firmware : C.01.069		Instrument	Run		8/26/2013 3:30:03 PM	(GMT --07:00) Pacific Standard Time	UC Davis	D8XSMGH1
Cartridge : Electrode		Instrument	Run		8/26/2013 3:30:03 PM	(GMT --07:00) Pacific Standard Time	UC Davis	D8XSMGH1