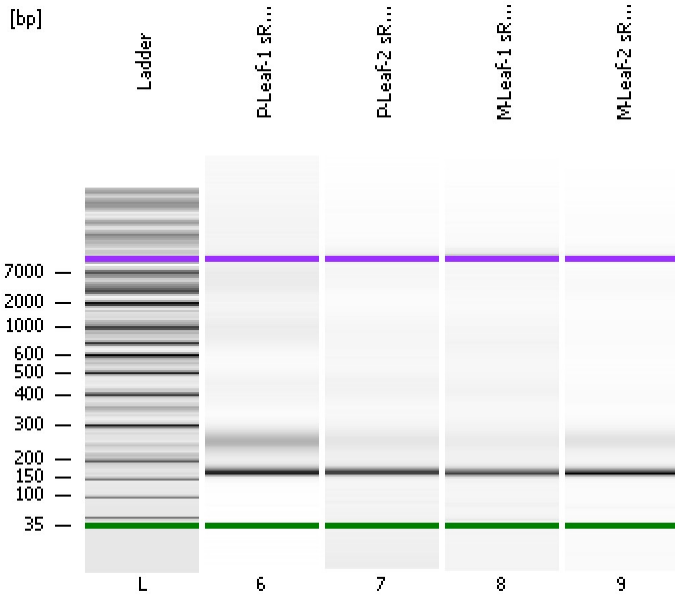


Assay Class: High Sensitivity DNA Assay
Data Path: C:\...Settings\Bioanalyzer\2013-08-27\2013-08-27_007_sRNA_Lib.xad

Created: 8/27/2013 3:25:30 PM
Modified: 8/27/2013 5:11:33 PM

Electrophoresis File Run Summary



Instrument Information:

Instrument Name: DE13701086 Firmware: C.01.069
Serial#: DE13701086 Type: G2938B

Assay Information:

Assay Origin Path: C:\Program Files\Agilent\2100 bioanalyzer\2100 expert\assays\dsDNA\High Sensitivity DNA.xsy
Assay Class: High Sensitivity DNA Assay
Version: 1.03
Assay Comments: Copyright © 2003-2010 Agilent Technologies

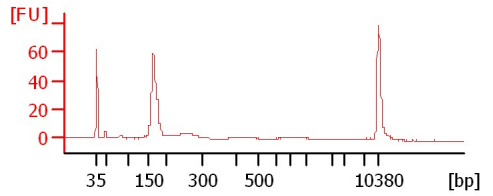
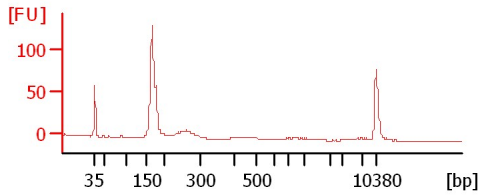
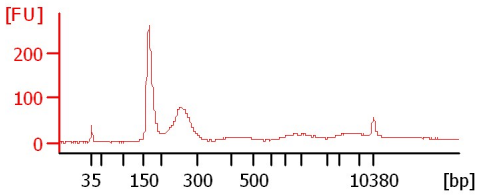
Chip Information:

Chip Lot #:
Reagent Kit Lot #:
Chip Comments:

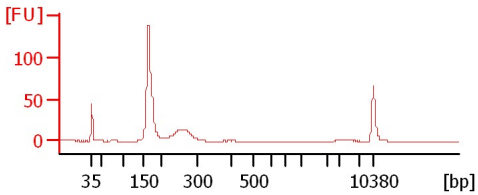
P-Leaf-1 sRNA Lib

P-Leaf-2 sRNA Lib

M-Leaf-1 sRNA Lib



M-Leaf-2 sRNA Lib 1:2



Assay Class: High Sensitivity DNA Assay
 Data Path: C:\...Settings\Bioanalyzer\2013-08-27\2013-08-27_007_sRNA_Lib.xad

Created: 8/27/2013 3:25:30 PM
 Modified: 8/27/2013 5:11:33 PM

Electrophoresis File Run Summary (Chip Summary)

Sample Name	Sample Comment	Rest. Digest	Status	Observation	Result Label	Result Color
P-Leaf-1 sRNA Lib		<input type="checkbox"/>	✓			
P-Leaf-2 sRNA Lib		<input type="checkbox"/>	✓			
M-Leaf-1 sRNA Lib		<input type="checkbox"/>	✓			
M-Leaf-2 sRNA Lib 1:2		<input type="checkbox"/>	✓			
Ladder		<input type="checkbox"/>	✓			

Chip Lot #

Reagent Kit Lot #

Chip Comments :

Assay Class: High Sensitivity DNA Assay
Data Path: C:\...Settings\Bioanalyzer\2013-08-27\2013-08-27_007_sRNA_Lib.xad

Created: 8/27/2013 3:25:30 PM
Modified: 8/27/2013 5:11:33 PM

Electrophoresis Assay Details

General Analysis Settings

Number of Available Sample and Ladder Wells (Max.) : 12
Minimum Visible Range [s] : 32
Maximum Visible Range [s] : 138
Start Analysis Time Range [s] : 33
End Analysis Time Range [s] : 137.5
Ladder Concentration [pg/μl] : 1950
Uses Standard Area for Ladder Fragments
Lower Marker Concentration [pg/μl] : 125
Upper Marker Concentration [pg/μl] : 75
Used Upper Marker for Quantitation
Standard Curve Fit is Point to Point
Show Data Aligned to Lower and Upper Marker

Integrator Settings

Integration Start Time [s] : 33.05
Integration End Time [s] : 137
Slope Threshold : 0.8
Height Threshold [FU] : 5
Area Threshold : 0.1
Width Threshold [s] : 0.6
Baseline Plateau [s] : 0.5

Filter Settings

Filter Width [s] : 0.5
Polynomial Order : 4

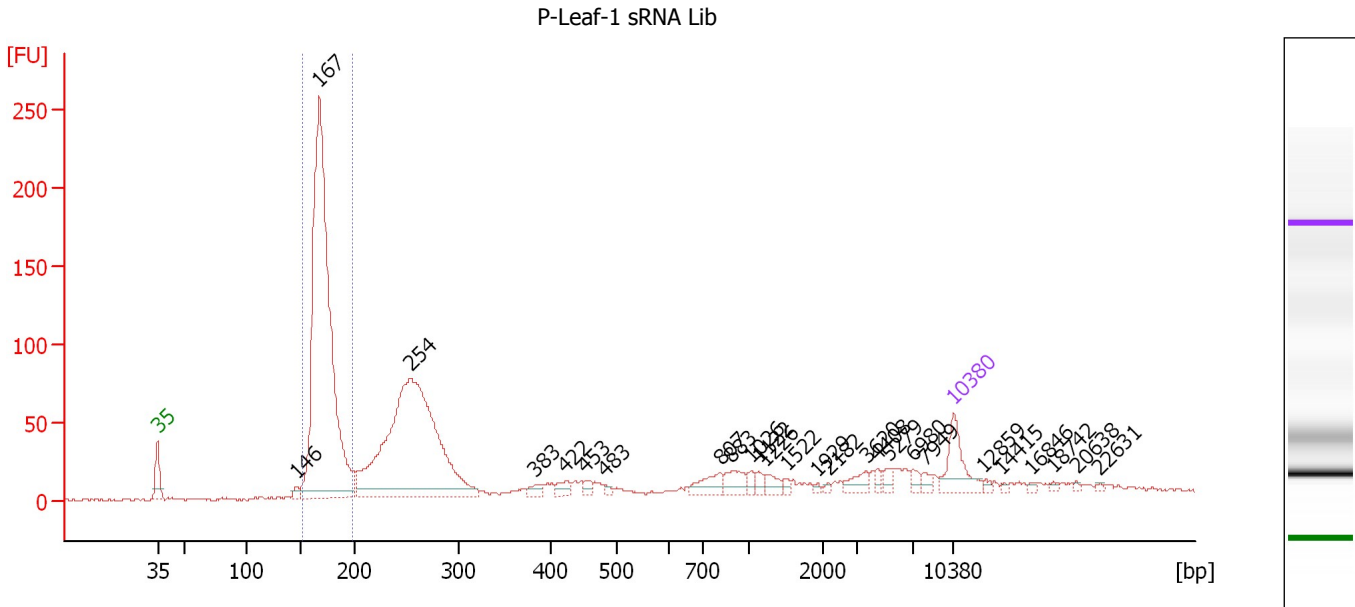
Ladder

Ladder Peak	Size	Area
1	35	160
2	50	210
3	100	208
4	150	221
5	200	242
6	300	270
7	400	305
8	500	306
9	600	336
10	700	321
11	1000	366
12	2000	413
13	3000	411
14	7000	400
15	10380	214

Assay Class: High Sensitivity DNA Assay
 Data Path: C:\...Settings\Bioanalyzer\2013-08-27\2013-08-27_007_sRNA_Lib.xad

Created: 8/27/2013 3:25:30 PM
 Modified: 8/27/2013 5:11:33 PM

Electropherogram Summary



Overall Results for sample 6 : P-Leaf-1 sRNA Lib

Number of peaks found: 26 Corr. Area 1: 746.9
 Noise: 0.7

Peak table for sample 6 : P-Leaf-1 sRNA Lib

Peak	Size [bp]	Conc. [pg/μl]	Molarity [pmol/l]	Observations
1	35	125.00	5,411.3	Lower Marker
2	146	16.57	172.0	
3	167	1,590.12	14,428.4	
4	254	1,117.79	6,680.1	
5	383	18.83	74.6	
6	422	23.35	83.8	
7	453	14.71	49.2	
8	483	9.33	29.3	
9	807	45.77	86.0	
10	883	42.10	72.2	
11	1,026	13.89	20.5	
12	1,122	12.93	17.5	
13	1,226	21.19	26.2	
14	1,522	8.12	8.1	
15	1,929	4.27	3.4	
16	2,182	5.23	3.6	
17	3,620	27.57	11.5	
18	4,408	10.87	3.7	
19	5,279	17.10	4.9	
20	6,980	15.12	3.3	
21	7,949	11.77	2.2	
22	10,380	75.00	10.9	Upper Marker
23	12,859	0.00	0.0	
24	14,415	0.00	0.0	
25	16,846	0.00	0.0	
26	18,742	0.00	0.0	


Assay Class: High Sensitivity DNA Assay
Data Path: C:\...Settings\Bioanalyzer\2013-08-27\2013-08-27_007_sRNA_Lib.xad

Created: 8/27/2013 3:25:30 PM
Modified: 8/27/2013 5:11:33 PM

Electropherogram Summary Continued ...**... Peak table for sample 6 : P-Leaf-1 sRNA Lib**

Peak	Size [bp]	Conc. [pg/μl]	Molarity [pmol/l]	Observations
27	20,638	0.00	0.0	
28	22,631	0.00	0.0	

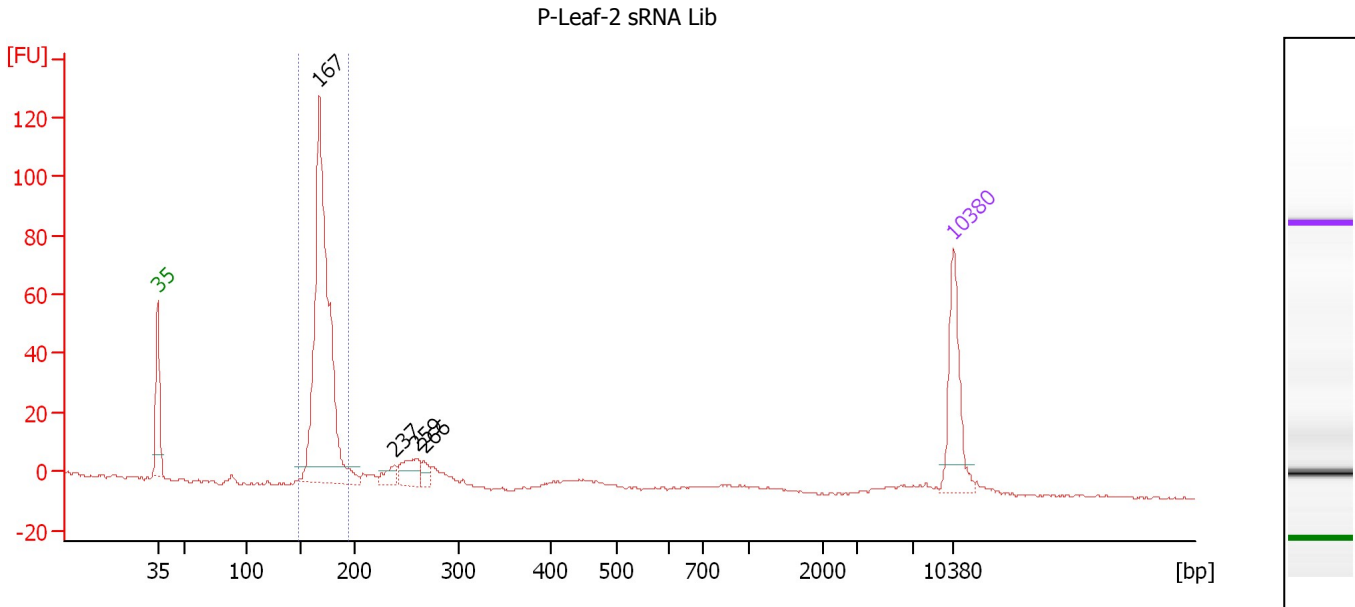
Region table for sample 6 : P-Leaf-1 sRNA Lib

From [bp]	To [bp]	Average Size [bp]	Molarity [pmol/l]	Conc. [pg/μl]	Corr. Area	% of Total	Size distribution in CV [%]	Color
151	198	171	13,861.8	1,560.33	746.9	41	5.1	

Assay Class: High Sensitivity DNA Assay
 Data Path: C:\...Settings\Bioanalyzer\2013-08-27\2013-08-27_007_sRNA_Lib.xad

Created: 8/27/2013 3:25:30 PM
 Modified: 8/27/2013 5:11:33 PM

Electropherogram Summary Continued ...



Overall Results for sample 7 : P-Leaf-2 sRNA Lib

Number of peaks found: 4 Corr. Area 1: 291.1
 Noise: 0.4

Peak table for sample 7 : P-Leaf-2 sRNA Lib

Peak	Size [bp]	Conc. [pg/μl]	Molarity [pmol/l]	Observations
1	35	125.00	5,411.3	Lower Marker
2	167	546.39	4,966.7	
3	237	20.85	133.1	
4	259	39.77	232.3	
5	266	14.98	85.3	
6	10,380	75.00	10.9	Upper Marker

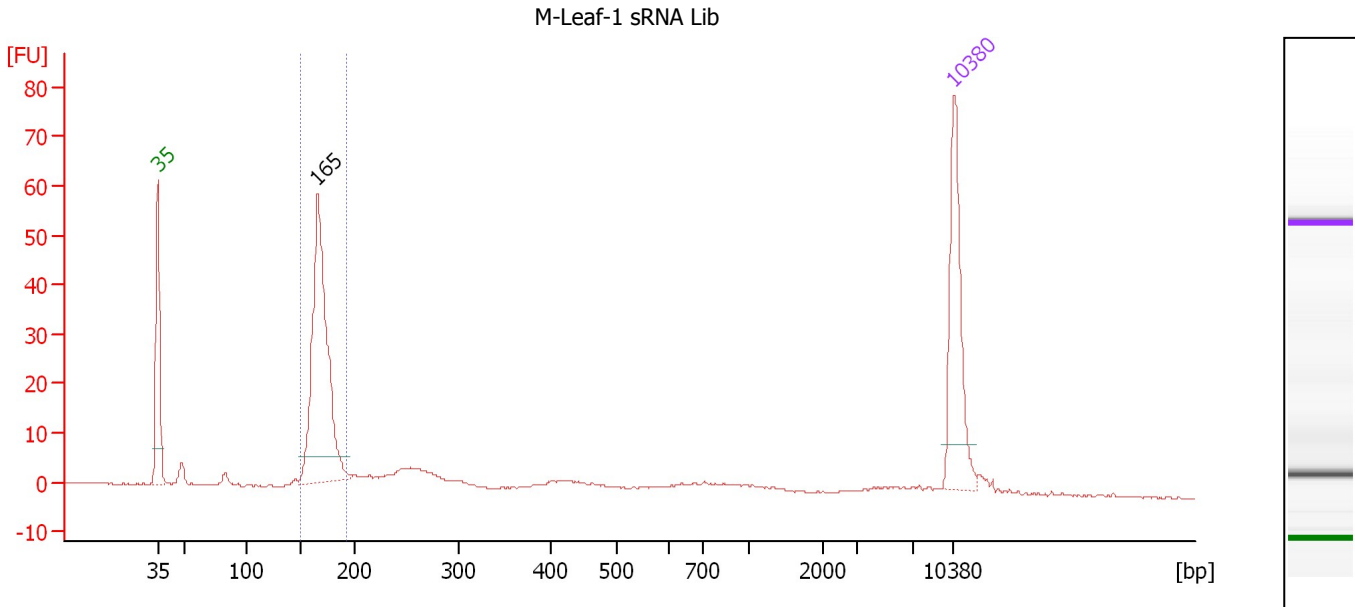
Region table for sample 7 : P-Leaf-2 sRNA Lib

From [bp]	To [bp]	Average Size [bp]	Molarity [pmol/l]	Conc. [pg/μl]	Corr. Area	% of Total	Size distribution in CV [%]	Color
147	194	170	4,567.9	513.04	291.1	77	4.1	Blue

Assay Class: High Sensitivity DNA Assay
 Data Path: C:\...Settings\Bioanalyzer\2013-08-27\2013-08-27_007_sRNA_Lib.xad

Created: 8/27/2013 3:25:30 PM
 Modified: 8/27/2013 5:11:33 PM

Electropherogram Summary Continued ...



Overall Results for sample 8 : M-Leaf-1 sRNA Lib

Number of peaks found: 1 Corr. Area 1: 153.3
 Noise: 0.1

Peak table for sample 8 : M-Leaf-1 sRNA Lib

Peak	Size [bp]	Conc. [pg/μl]	Molarity [pmol/l]	Observations
1	35	125.00	5,411.3	Lower Marker
2	165	263.37	2,417.7	
3	10,380	75.00	10.9	Upper Marker

Region table for sample 8 : M-Leaf-1 sRNA Lib

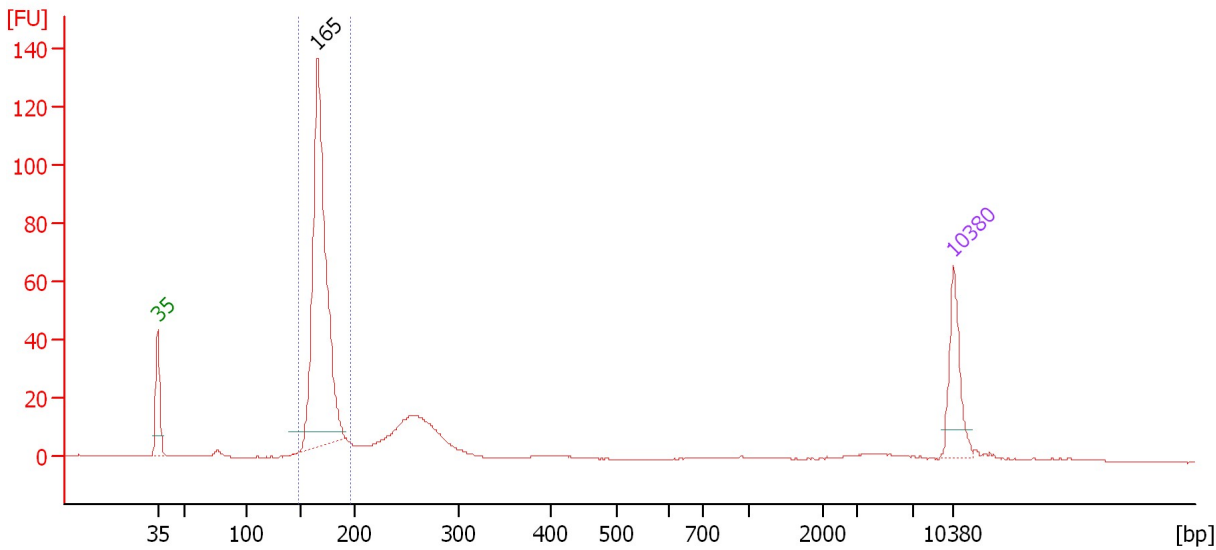
From [bp]	To [bp]	Average Size [bp]	Molarity [pmol/l]	Conc. [pg/μl]	Corr. Area	% of Total	Size distribution in CV [%]	Color
150	193	168	2,448.1	272.13	153.3	58	4.6	Blue

Assay Class: High Sensitivity DNA Assay
 Data Path: C:\...Settings\Bioanalyzer\2013-08-27\2013-08-27_007_sRNA_Lib.xad

Created: 8/27/2013 3:25:30 PM
 Modified: 8/27/2013 5:11:33 PM

Electropherogram Summary Continued ...

M-Leaf-2 sRNA Lib 1:2



Overall Results for sample 9 : M-Leaf-2 sRNA Lib 1:2

Number of peaks found: 1 Corr. Area 1: 328.2
 Noise: 0.1

Peak table for sample 9 : M-Leaf-2 sRNA Lib 1:2

Peak	Size [bp]	Conc. [pg/μl]	Molarity [pmol/l]	Observations
1	35	125.00	5,411.3	Lower Marker
2	165	704.25	6,464.9	
3	10,380	75.00	10.9	Upper Marker

Region table for sample 9 : M-Leaf-2 sRNA Lib 1:2

From [bp]	To [bp]	Average Size [bp]	Molarity [pmol/l]	Conc. [pg/μl]	Corr. Area	% of Total	Size distribution in CV [%]	Color
148	196	169	6,932.2	772.02	328.2	64	4.7	Blue