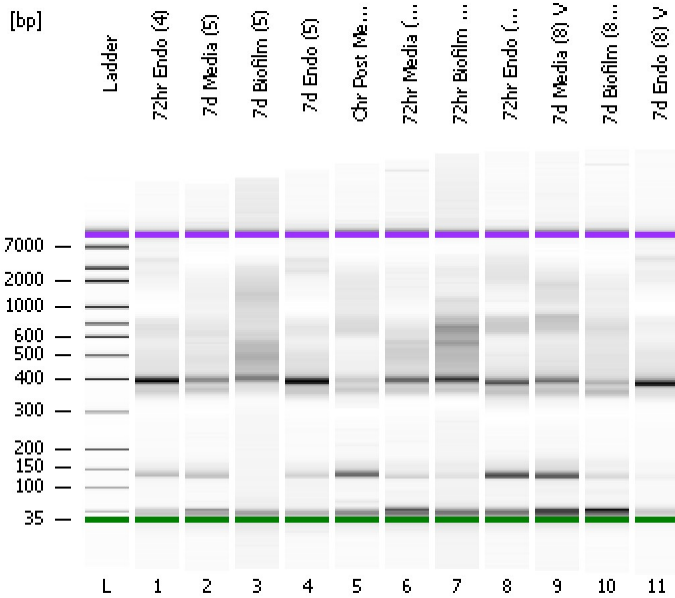


Assay Class: High Sensitivity DNA Assay  
Data Path: C:\...ents and Settings\Bioanalyzer\2013-08-27\2013-08-27\_008.xad

Created: 8/27/2013 4:23:15 PM  
Modified: 8/27/2013 5:05:57 PM

**Electrophoresis File Run Summary**



Instrument Information:

Instrument Name: DE13701086      Firmware: C.01.069  
Serial#: DE13701086      Type: G2938B

Assay Information:

Assay Origin Path: C:\Program Files\Agilent\2100 bioanalyzer\2100 expert\assays\dsDNA\High Sensitivity DNA.xsy  
Assay Class: High Sensitivity DNA Assay  
Version: 1.03  
Assay Comments: Copyright © 2003-2010 Agilent Technologies

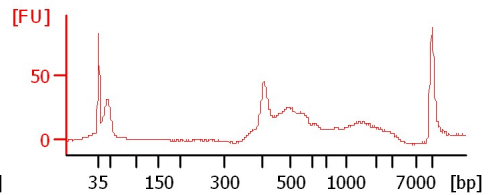
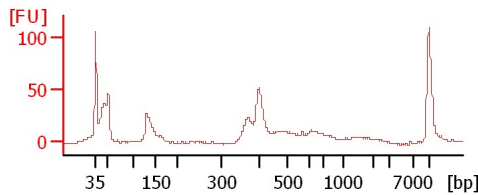
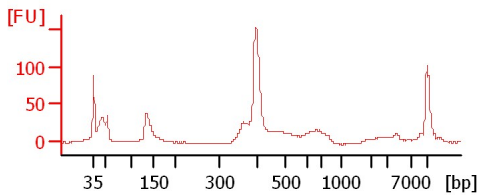
Chip Information:

Chip Lot #:   
Reagent Kit Lot #:   
Chip Comments:

**72hr Endo (4)**

**7d Media (5)**

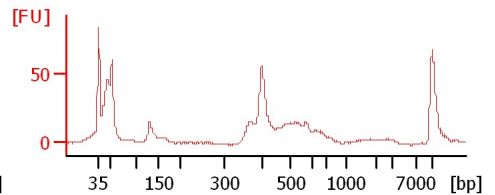
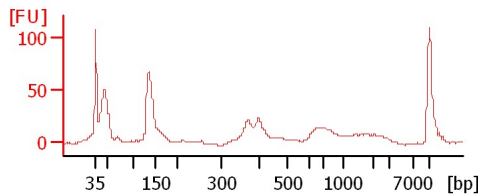
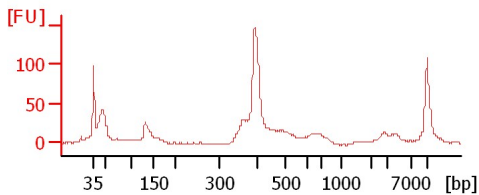
**7d Biofilm (5)**



**7d Endo (5)**

**0hr Post Media (8)**

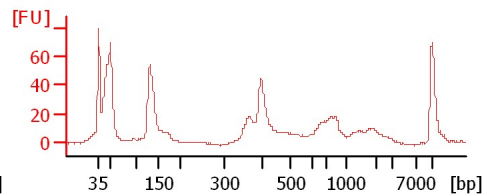
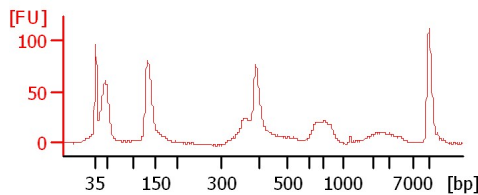
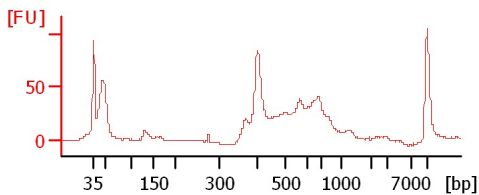
**72hr Media (7) V**



**72hr Biofilm (7) V**

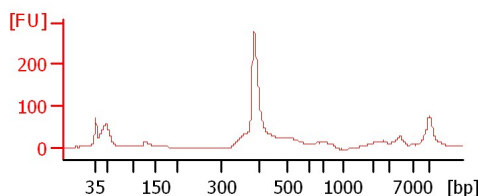
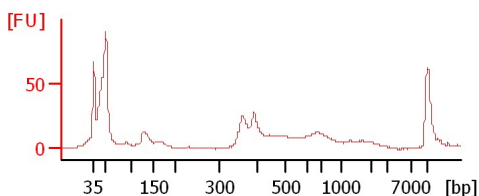
**72hr Endo (7) V**

**7d Media (8) V**



**7d Biofilm (8) V**

**7d Endo (8) V**



Assay Class: High Sensitivity DNA Assay  
Data Path: C:\...ents and Settings\Bioanalyzer\2013-08-27\2013-08-27\_008.xad

Created: 8/27/2013 4:23:15 PM  
Modified: 8/27/2013 5:05:57 PM

**Electrophoresis File Run Summary (Chip Summary)**

Sample Name	Sample Comment	Rest. Digest	Status	Observation	Result Label	Result Color
72hr Endo (4)		<input type="checkbox"/>	✓			
7d Media (5)		<input type="checkbox"/>	✓			
7d Biofilm (5)		<input type="checkbox"/>	✓			
7d Endo (5)		<input type="checkbox"/>	✓			
Ohr Post Media (8)		<input type="checkbox"/>	✓			
72hr Media (7) V		<input type="checkbox"/>	✓			
72hr Biofilm (7) V		<input type="checkbox"/>	✓			
72hr Endo (7) V		<input type="checkbox"/>	✓			
7d Media (8) V		<input type="checkbox"/>	✓			
7d Biofilm (8) V		<input type="checkbox"/>	✓			
7d Endo (8) V		<input type="checkbox"/>	✓			
Ladder		<input type="checkbox"/>	✓			

**Chip Lot #**

**Reagent Kit Lot #**

**Chip Comments :**

Assay Class: High Sensitivity DNA Assay  
Data Path: C:\...ents and Settings\Bioanalyzer\2013-08-27\2013-08-27\_008.xad

Created: 8/27/2013 4:23:15 PM  
Modified: 8/27/2013 5:05:57 PM

**Electrophoresis Assay Details**

**General Analysis Settings**

Number of Available Sample and Ladder Wells (Max.) : 12  
Minimum Visible Range [s] : 32  
Maximum Visible Range [s] : 138  
Start Analysis Time Range [s] : 33  
End Analysis Time Range [s] : 137.5  
Ladder Concentration [pg/μl] : 1950  
Uses Standard Area for Ladder Fragments  
Lower Marker Concentration [pg/μl] : 125  
Upper Marker Concentration [pg/μl] : 75  
Used Upper Marker for Quantitation  
Standard Curve Fit is Point to Point  
Show Data Aligned to Lower and Upper Marker

**Integrator Settings**

Integration Start Time [s] : 33.05  
Integration End Time [s] : 137  
Slope Threshold : 0.8  
Height Threshold [FU] : 5  
Area Threshold : 0.1  
Width Threshold [s] : 0.6  
Baseline Plateau [s] : 0.5

**Filter Settings**

Filter Width [s] : 0.5  
Polynomial Order : 4

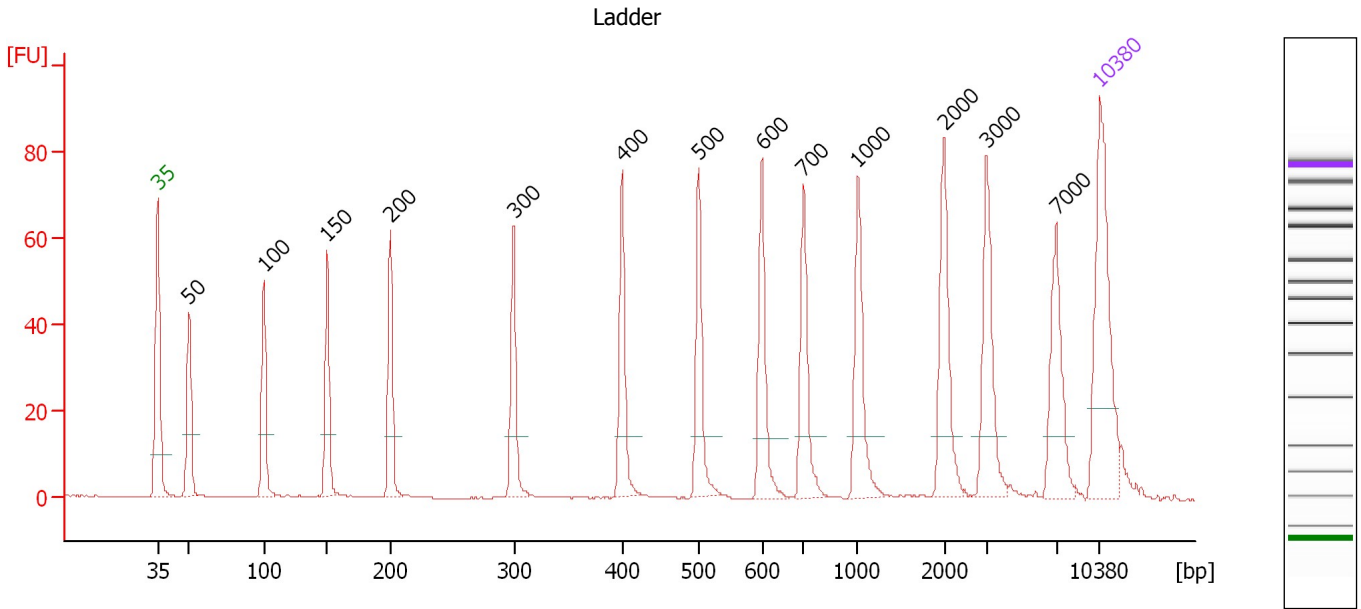
**Ladder**

Ladder Peak	Size	Area
1	35	160
2	50	210
3	100	208
4	150	221
5	200	242
6	300	270
7	400	305
8	500	306
9	600	336
10	700	321
11	1000	366
12	2000	413
13	3000	411
14	7000	400
15	10380	214

Assay Class: High Sensitivity DNA Assay  
 Data Path: C:\...ents and Settings\Bioanalyzer\2013-08-27\2013-08-27\_008.xad

Created: 8/27/2013 4:23:15 PM  
 Modified: 8/27/2013 5:05:57 PM

**Electropherogram Summary**



**Overall Results for Ladder**

Noise: 0.1

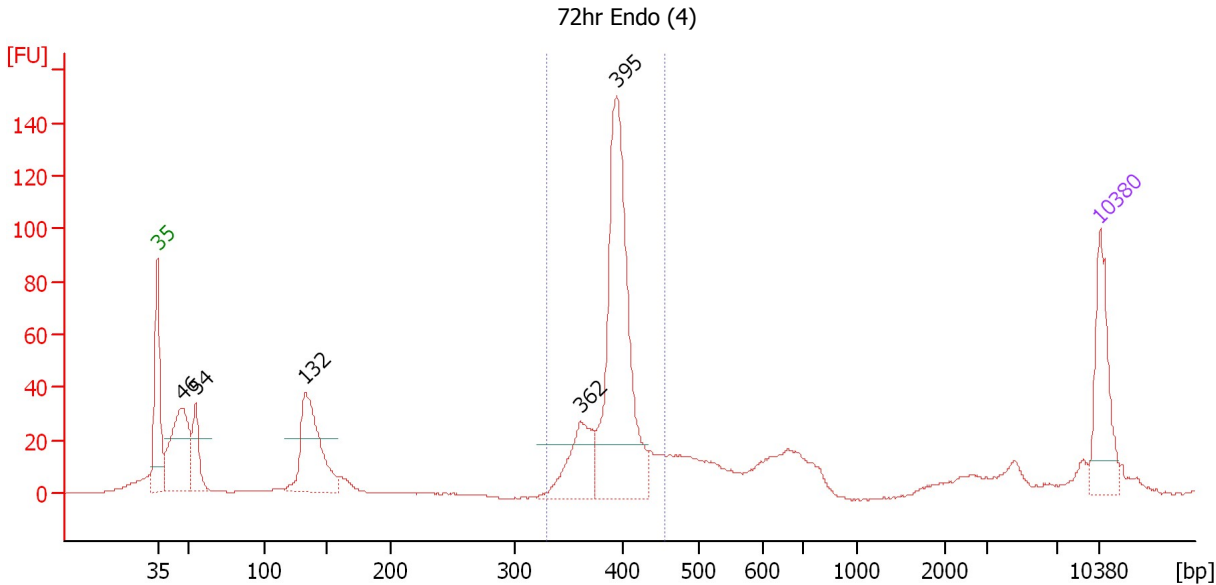
**Peak table for Ladder**

Peak	Size [bp]	Conc. [pg/μl]	Molarity [pmol/l]	Observations
1	35	125.00	5,411.3	Lower Marker
2	50	150.00	4,545.5	Ladder Peak
3	100	150.00	2,272.7	Ladder Peak
4	150	150.00	1,515.2	Ladder Peak
5	200	150.00	1,136.4	Ladder Peak
6	300	150.00	757.6	Ladder Peak
7	400	150.00	568.2	Ladder Peak
8	500	150.00	454.5	Ladder Peak
9	600	150.00	378.8	Ladder Peak
10	700	150.00	324.7	Ladder Peak
11	1,000	150.00	227.3	Ladder Peak
12	2,000	150.00	113.6	Ladder Peak
13	3,000	150.00	75.8	Ladder Peak
14	7,000	150.00	32.5	Ladder Peak
15	10,380	75.00	10.9	Upper Marker

Assay Class: High Sensitivity DNA Assay  
 Data Path: C:\...ents and Settings\Bioanalyzer\2013-08-27\2013-08-27\_008.xad

Created: 8/27/2013 4:23:15 PM  
 Modified: 8/27/2013 5:05:57 PM

**Electropherogram Summary Continued ...**



**Setpoint Deviations for sample 1 : 72hr Endo (4)**

Height Threshold [FU] : 20

**Overall Results for sample 1 : 72hr Endo (4)**

Number of peaks found: 5                      Corr. Area 1: 448.1  
 Noise: 0.2

**Peak table for sample 1 : 72hr Endo (4)**

Peak	Size [bp]	Conc. [pg/μl]	Molarity [pmol/l]	Observations
1	35	125.00	5,411.3	Lower Marker
2	46	179.66	5,860.4	
3	54	65.14	1,818.3	
4	132	175.19	2,004.2	
5	362	92.72	388.5	
6	395	374.31	1,435.7	
7	10,380	75.00	10.9	Upper Marker

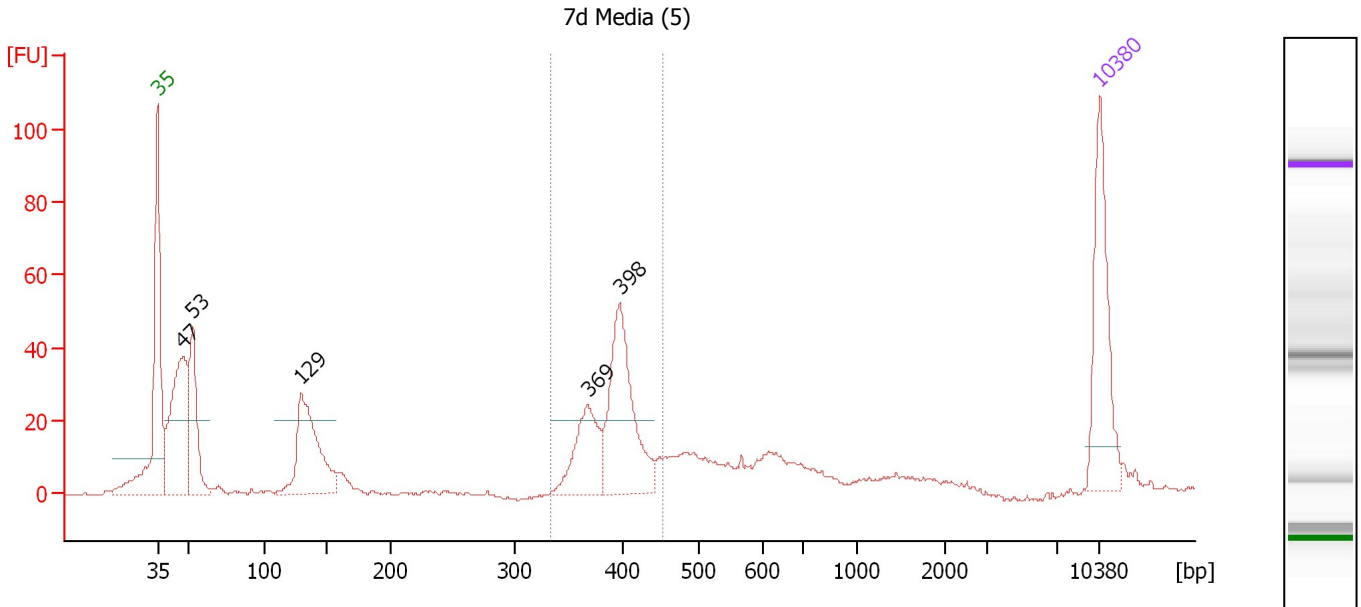
**Region table for sample 1 : 72hr Endo (4)**

From [bp]	To [bp]	Average Size [bp]	Molarity [pmol/l]	Conc. [pg/μl]	Corr. Area	% of Total	Size distribution in CV [%]	Color
331	456	395	1,805.6	469.26	448.1	43	5.4	Blue

Assay Class: High Sensitivity DNA Assay  
 Data Path: C:\...ents and Settings\Bioanalyzer\2013-08-27\2013-08-27\_008.xad

Created: 8/27/2013 4:23:15 PM  
 Modified: 8/27/2013 5:05:57 PM

**Electropherogram Summary Continued ...**



**Setpoint Deviations for sample 2 : 7d Media (5)**

Height Threshold [FU] : 20

**Overall Results for sample 2 : 7d Media (5)**

Number of peaks found: 5      Corr. Area 1: 213.4  
 Noise: 0.5

**Peak table for sample 2 : 7d Media (5)**

Peak	Size [bp]	Conc. [pg/μl]	Molarity [pmol/l]	Observations
1	35	125.00	5,411.3	Lower Marker
2	47	172.98	5,544.5	
3	53	96.16	2,770.5	
4	129	128.42	1,505.5	
5	369	65.23	268.1	
6	398	129.62	493.3	
7	10,380	75.00	10.9	Upper Marker

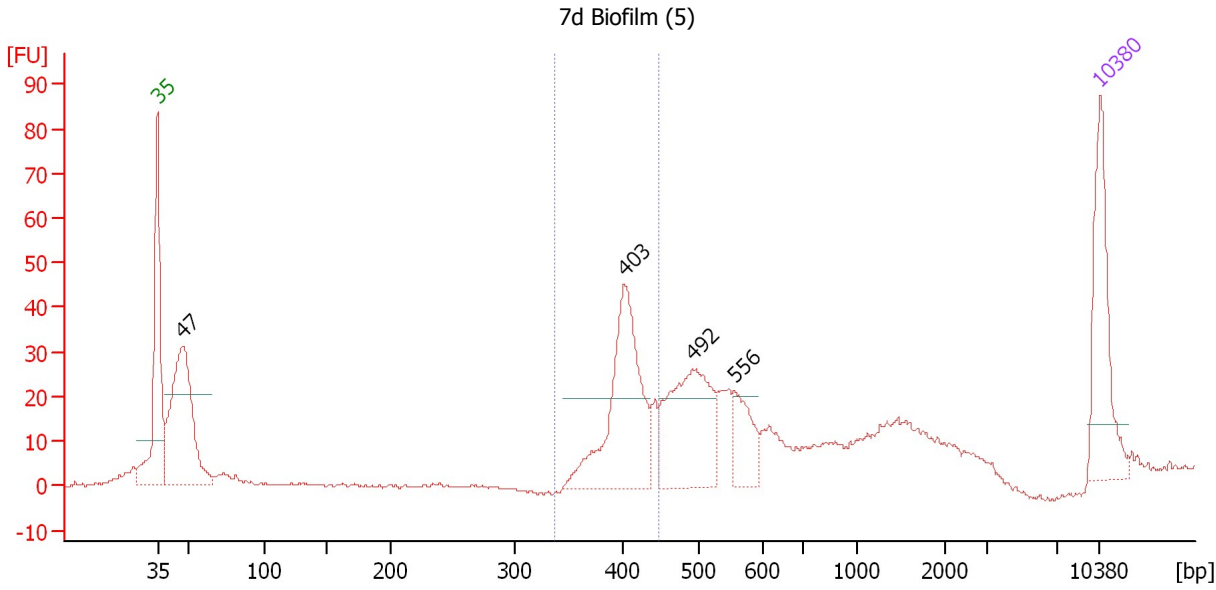
**Region table for sample 2 : 7d Media (5)**

From [bp]	To [bp]	Average Size [bp]	Molarity [pmol/l]	Conc. [pg/μl]	Corr. Area	% of Total	Size distribution in CV [%]	Color
335	453	393	781.4	202.21	213.4	29	6.0	Blue

Assay Class: High Sensitivity DNA Assay  
 Data Path: C:\...ents and Settings\Bioanalyzer\2013-08-27\2013-08-27\_008.xad

Created: 8/27/2013 4:23:15 PM  
 Modified: 8/27/2013 5:05:57 PM

**Electropherogram Summary Continued ...**



**Setpoint Deviations for sample 3 : 7d Biofilm (5)**

Height Threshold [FU] : 20

**Overall Results for sample 3 : 7d Biofilm (5)**

Number of peaks found: 4                      Corr. Area 1: 154.9  
 Noise: 0.3

**Peak table for sample 3 : 7d Biofilm (5)**

Peak	Size [bp]	Conc. [pg/µl]	Molarity [pmol/l]	Observations
1	35	125.00	5,411.3	Lower Marker
2	47	218.17	7,054.6	
3	403	174.10	654.3	
4	492	137.33	422.6	
5	556	43.67	119.0	
6	10,380	75.00	10.9	Upper Marker

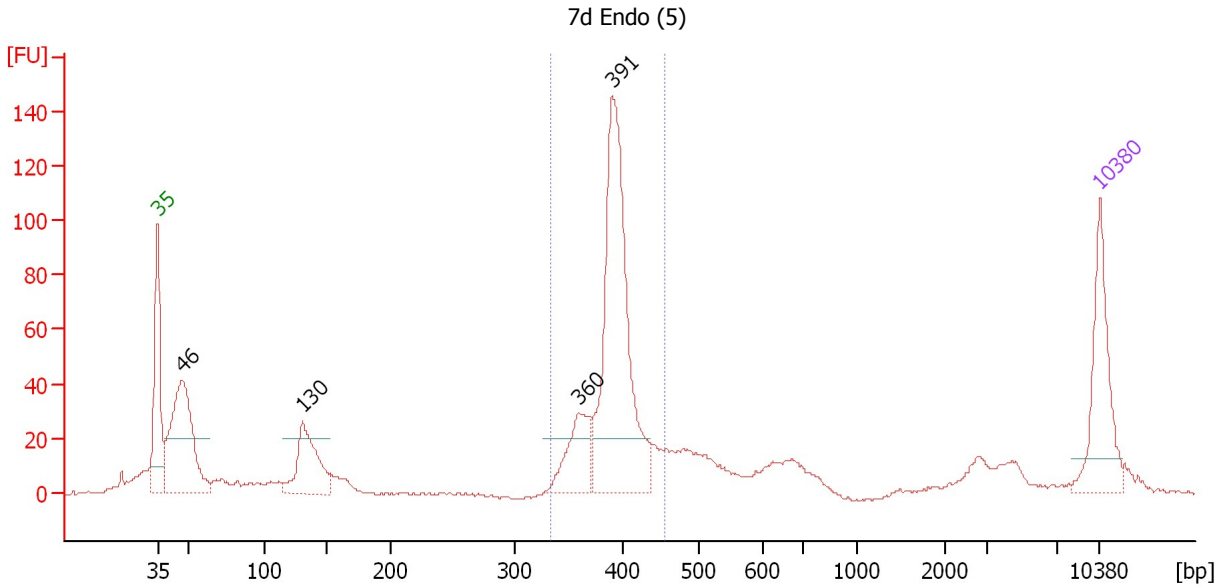
**Region table for sample 3 : 7d Biofilm (5)**

From [bp]	To [bp]	Average Size [bp]	Molarity [pmol/l]	Conc. [pg/µl]	Corr. Area	% of Total	Size distribution in CV [%]	Color
339	447	407	651.6	174.56	154.9	22	4.9	Blue

Assay Class: High Sensitivity DNA Assay  
 Data Path: C:\...ents and Settings\Bioanalyzer\2013-08-27\2013-08-27\_008.xad

Created: 8/27/2013 4:23:15 PM  
 Modified: 8/27/2013 5:05:57 PM

**Electropherogram Summary Continued ...**



**Setpoint Deviations for sample 4 : 7d Endo (5)**

Height Threshold [FU] : 20

**Overall Results for sample 4 : 7d Endo (5)**

Number of peaks found: 4      Corr. Area 1: 480.6  
 Noise: 0.6

**Peak table for sample 4 : 7d Endo (5)**

Peak	Size [bp]	Conc. [pg/μl]	Molarity [pmol/l]	Observations
1	35	125.00	5,411.3	Lower Marker
2	46	231.30	7,541.2	
3	130	104.77	1,218.3	
4	360	72.15	303.4	
5	391	330.02	1,277.9	
6	10,380	75.00	10.9	Upper Marker

**Region table for sample 4 : 7d Endo (5)**

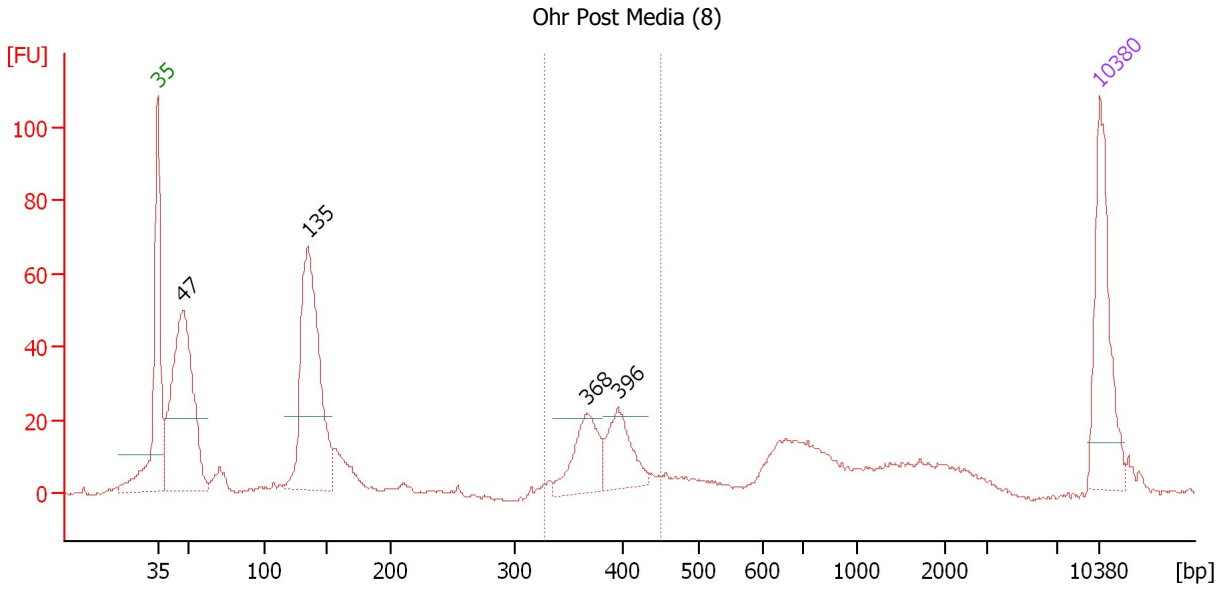
From [bp]	To [bp]	Average Size [bp]	Molarity [pmol/l]	Conc. [pg/μl]	Corr. Area	% of Total	Size distribution in CV [%]	Color
334	455	393	1,612.0	417.06	480.6	45	5.6	Blue



Assay Class: High Sensitivity DNA Assay  
 Data Path: C:\...ents and Settings\Bioanalyzer\2013-08-27\2013-08-27\_008.xad

Created: 8/27/2013 4:23:15 PM  
 Modified: 8/27/2013 5:05:57 PM

**Electropherogram Summary Continued ...**



**Setpoint Deviations for sample 5 : Ohr Post Media (8)**

Height Threshold [FU] : 20

**Overall Results for sample 5 : Ohr Post Media (8)**

Number of peaks found: 4                      Corr. Area 1: 136.8  
 Noise: 0.5

**Peak table for sample 5 : Ohr Post Media (8)**

Peak	Size [bp]	Conc. [pg/µl]	Molarity [pmol/l]	Observations
1	35	125.00	5,411.3	Lower Marker
2	47	275.28	8,886.1	
3	135	256.31	2,878.5	
4	368	59.87	246.6	
5	396	52.06	199.1	
6	10,380	75.00	10.9	Upper Marker

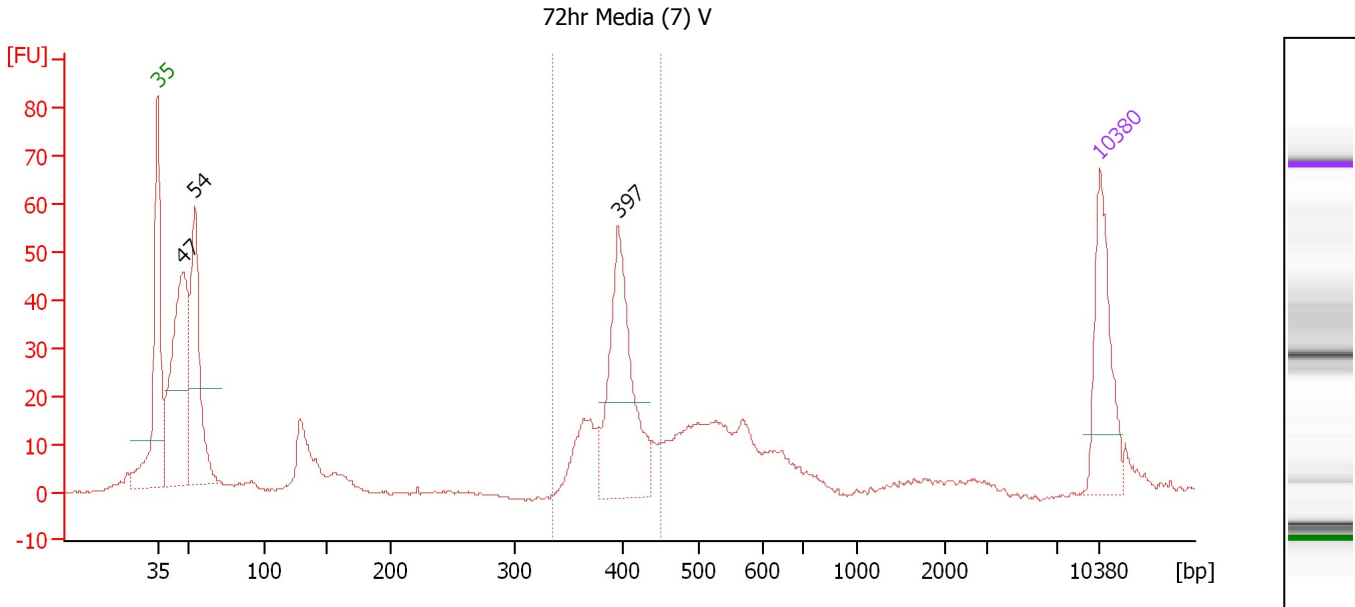
**Region table for sample 5 : Ohr Post Media (8)**

From [bp]	To [bp]	Average Size [bp]	Molarity [pmol/l]	Conc. [pg/µl]	Corr. Area	% of Total	Size distribution in CV [%]	Color
329	451	386	491.6	124.65	136.8	17	6.5	Blue

Assay Class: High Sensitivity DNA Assay  
 Data Path: C:\...ents and Settings\Bioanalyzer\2013-08-27\2013-08-27\_008.xad

Created: 8/27/2013 4:23:15 PM  
 Modified: 8/27/2013 5:05:57 PM

**Electropherogram Summary Continued ...**



**Setpoint Deviations for sample 6 : 72hr Media (7) V**

Height Threshold [FU] : 20

**Overall Results for sample 6 : 72hr Media (7) V**

Number of peaks found: 3                      Corr. Area 1: 183.5  
 Noise: 0.3

**Peak table for sample 6 : 72hr Media (7) V**

Peak	Size [bp]	Conc. [pg/μl]	Molarity [pmol/l]	Observations
1	35	125.00	5,411.3	Lower Marker
2	47	278.74	9,037.2	
3	54	195.67	5,502.9	
4	397	186.57	712.4	
5	10,380	75.00	10.9	Upper Marker

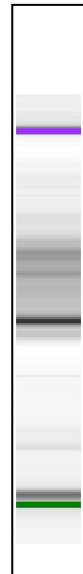
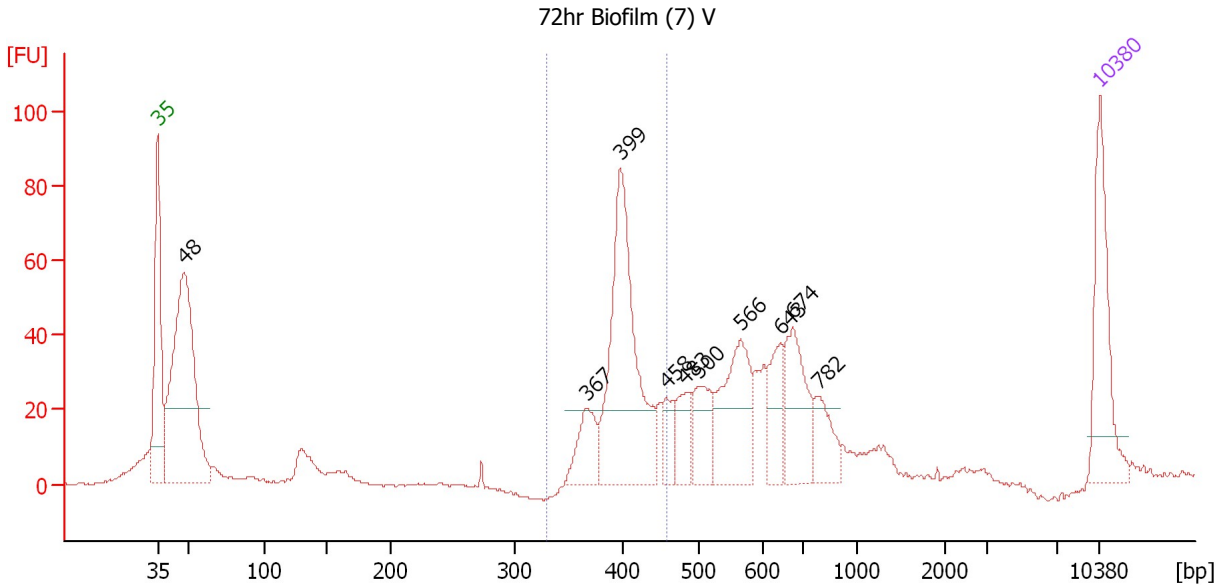
**Region table for sample 6 : 72hr Media (7) V**

From [bp]	To [bp]	Average Size [bp]	Molarity [pmol/l]	Conc. [pg/μl]	Corr. Area	% of Total	Size distribution in CV [%]	Color
336	450	396	931.4	242.90	183.5	26	5.6	Blue

Assay Class: High Sensitivity DNA Assay  
 Data Path: C:\...ents and Settings\Bioanalyzer\2013-08-27\2013-08-27\_008.xad

Created: 8/27/2013 4:23:15 PM  
 Modified: 8/27/2013 5:05:57 PM

**Electropherogram Summary Continued ...**



**Setpoint Deviations for sample 7 : 72hr Biofilm (7) V**

Height Threshold [FU] : 20

**Overall Results for sample 7 : 72hr Biofilm (7) V**

Number of peaks found: 10                      Corr. Area 1: 291.5  
 Noise: 0.2

**Peak table for sample 7 : 72hr Biofilm (7) V**

Peak	Size [bp]	Conc. [pg/µl]	Molarity [pmol/l]	Observations
1	35	125.00	5,411.3	Lower Marker
2	48	356.07	11,346.9	
3	367	45.61	188.2	
4	399	231.38	879.3	
5	458	24.22	80.2	
6	483	36.45	114.5	
7	500	45.95	139.2	
8	566	101.47	271.4	
9	643	42.56	100.3	
10	674	76.67	172.4	
11	782	38.44	74.4	
12	10,380	75.00	10.9	Upper Marker

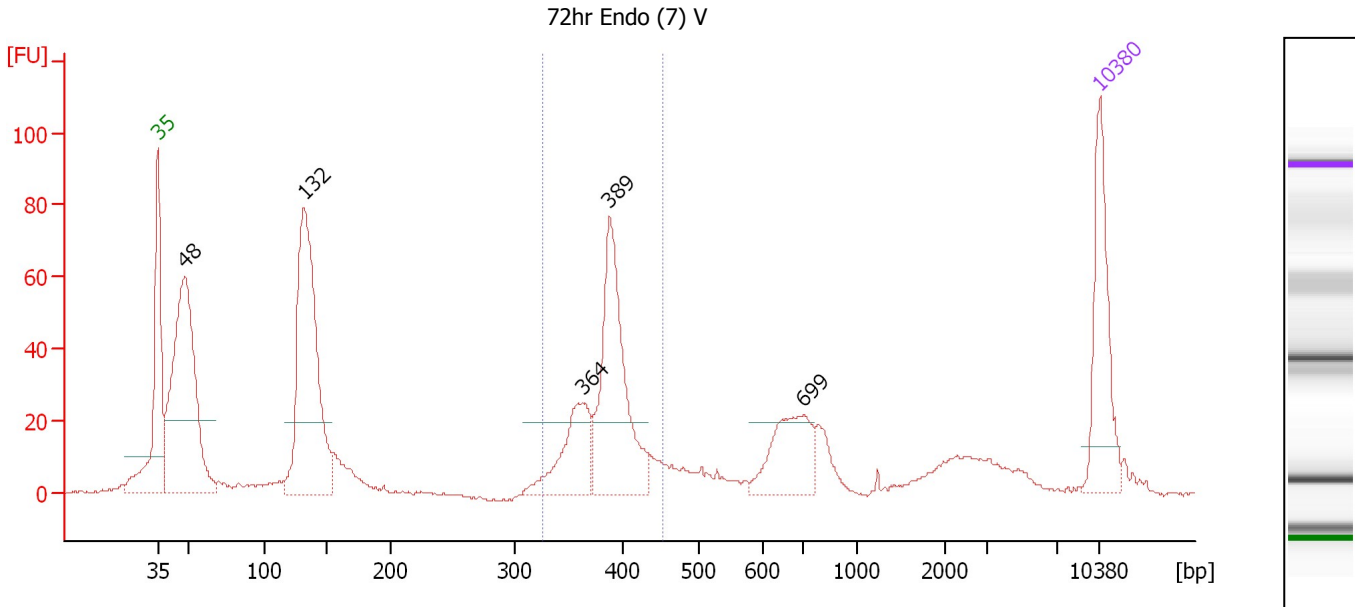
**Region table for sample 7 : 72hr Biofilm (7) V**

From [bp]	To [bp]	Average Size [bp]	Molarity [pmol/l]	Conc. [pg/µl]	Corr. Area	% of Total	Size distribution in CV [%]	Color
331	458	403	1,116.6	296.09	291.5	26	5.8	Blue

Assay Class: High Sensitivity DNA Assay  
 Data Path: C:\...ents and Settings\Bioanalyzer\2013-08-27\2013-08-27\_008.xad

Created: 8/27/2013 4:23:15 PM  
 Modified: 8/27/2013 5:05:57 PM

**Electropherogram Summary Continued ...**



**Setpoint Deviations for sample 8 : 72hr Endo (7) V**

Height Threshold [FU] : 20

**Overall Results for sample 8 : 72hr Endo (7) V**

Number of peaks found: 5                      Corr. Area 1: 273.5  
 Noise: 0.5

**Peak table for sample 8 : 72hr Endo (7) V**

Peak	Size [bp]	Conc. [pg/μl]	Molarity [pmol/l]	Observations
1	35	125.00	5,411.3	Lower Marker
2	48	351.06	11,097.1	
3	132	320.32	3,689.8	
4	364	80.35	334.9	
5	389	179.77	700.6	
6	699	72.43	157.1	
7	10,380	75.00	10.9	Upper Marker

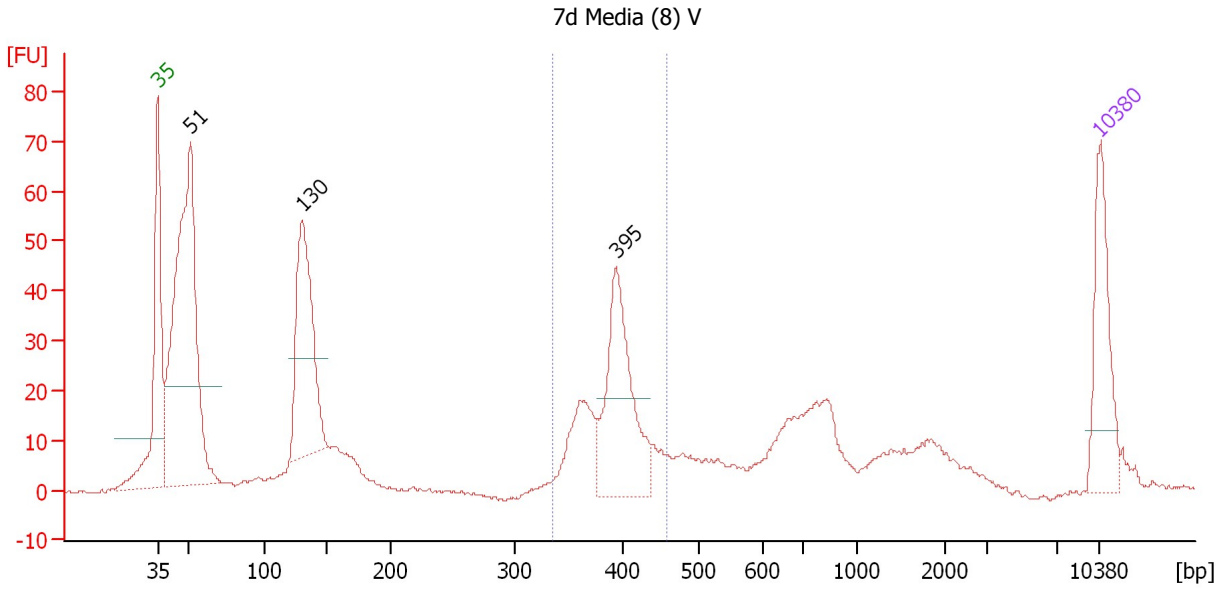
**Region table for sample 8 : 72hr Endo (7) V**

From [bp]	To [bp]	Average Size [bp]	Molarity [pmol/l]	Conc. [pg/μl]	Corr. Area	% of Total	Size distribution in CV [%]	Color
327	452	386	1,003.2	255.11	273.5	26	6.3	Blue

Assay Class: High Sensitivity DNA Assay  
 Data Path: C:\...ents and Settings\Bioanalyzer\2013-08-27\2013-08-27\_008.xad

Created: 8/27/2013 4:23:15 PM  
 Modified: 8/27/2013 5:05:57 PM

**Electropherogram Summary Continued ...**



**Setpoint Deviations for sample 9 : 7d Media (8) V**

Height Threshold [FU] : 20

**Overall Results for sample 9 : 7d Media (8) V**

Number of peaks found: 3                      Corr. Area 1: 181.7  
 Noise: 0.4

**Peak table for sample 9 : 7d Media (8) V**

Peak	Size [bp]	Conc. [pg/µl]	Molarity [pmol/l]	Observations
1	35	125.00	5,411.3	Lower Marker
2	51	535.45	15,886.9	
3	130	235.64	2,738.0	
4	395	176.29	676.2	
5	10,380	75.00	10.9	Upper Marker

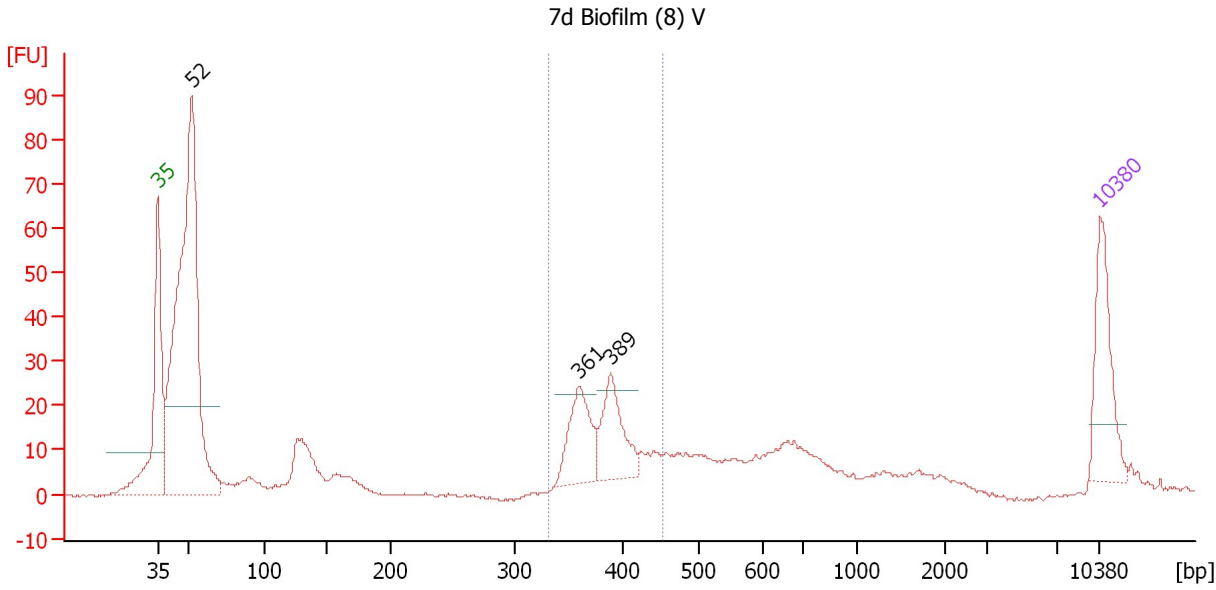
**Region table for sample 9 : 7d Media (8) V**

From [bp]	To [bp]	Average Size [bp]	Molarity [pmol/l]	Conc. [pg/µl]	Corr. Area	% of Total	Size distribution in CV [%]	Color
337	458	393	982.4	253.74	181.7	20	6.5	Blue

Assay Class: High Sensitivity DNA Assay  
 Data Path: C:\...ents and Settings\Bioanalyzer\2013-08-27\2013-08-27\_008.xad

Created: 8/27/2013 4:23:15 PM  
 Modified: 8/27/2013 5:05:57 PM

**Electropherogram Summary Continued ...**



**Setpoint Deviations for sample 10 : 7d Biofilm (8) V**

Height Threshold [FU] : 20

**Overall Results for sample 10 : 7d Biofilm (8) V**

Number of peaks found: 3                      Corr. Area 1: 154.7  
 Noise: 0.3

**Peak table for sample 10 : 7d Biofilm (8) V**

Peak	Size [bp]	Conc. [pg/µl]	Molarity [pmol/l]	Observations
1	35	125.00	5,411.3	Lower Marker
2	52	713.36	20,922.8	
3	361	88.49	371.4	
4	389	83.90	326.4	
5	10,380	75.00	10.9	Upper Marker

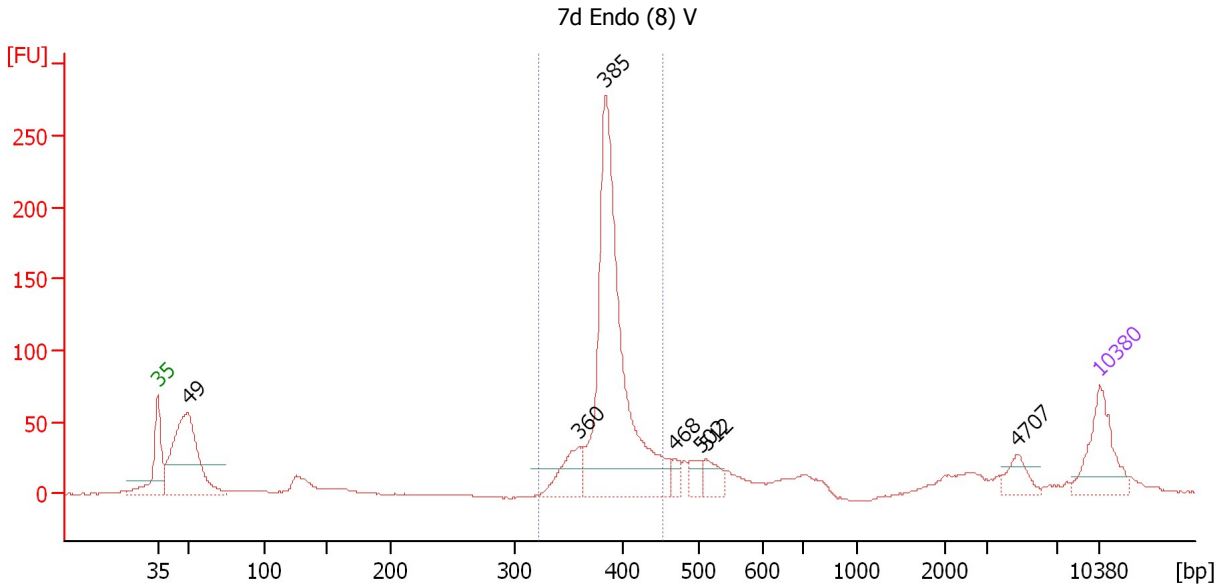
**Region table for sample 10 : 7d Biofilm (8) V**

From [bp]	To [bp]	Average Size [bp]	Molarity [pmol/l]	Conc. [pg/µl]	Corr. Area	% of Total	Size distribution in CV [%]	Color
333	454	386	960.3	243.66	154.7	21	7.2	Blue

Assay Class: High Sensitivity DNA Assay  
 Data Path: C:\...ents and Settings\Bioanalyzer\2013-08-27\2013-08-27\_008.xad

Created: 8/27/2013 4:23:15 PM  
 Modified: 8/27/2013 5:05:57 PM

**Electropherogram Summary Continued ...**



**Setpoint Deviations for sample 11 : 7d Endo (8) V**

Height Threshold [FU] : 20

**Overall Results for sample 11 : 7d Endo (8) V**

Number of peaks found: 7                      Corr. Area 1: 759.5  
 Noise: 0.3

**Peak table for sample 11 : 7d Endo (8) V**

Peak	Size [bp]	Conc. [pg/μl]	Molarity [pmol/l]	Observations
1	35	125.00	5,411.3	Lower Marker
2	49	304.77	9,345.7	
3	360	73.01	307.2	
4	385	605.04	2,380.4	
5	468	18.44	59.7	
6	502	25.58	77.2	
7	512	33.78	99.9	
8	4,707	27.79	8.9	
9	10,380	75.00	10.9	Upper Marker

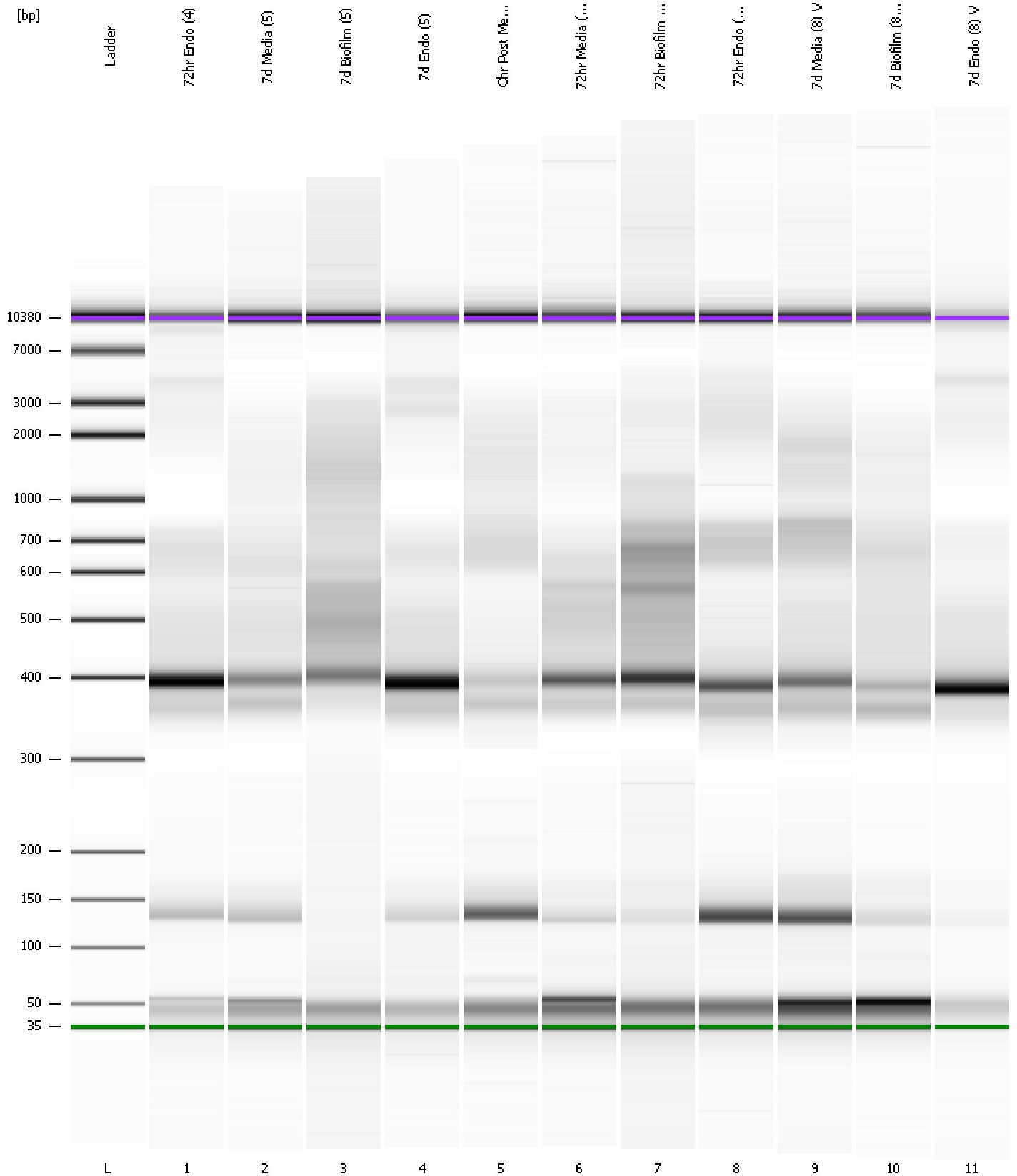
**Region table for sample 11 : 7d Endo (8) V**

From [bp]	To [bp]	Average Size [bp]	Molarity [pmol/l]	Conc. [pg/μl]	Corr. Area	% of Total	Size distribution in CV [%]	Color
324	452	390	2,420.7	621.72	759.5	54	5.4	Blue

Assay Class: High Sensitivity DNA Assay  
Data Path: C:\...ents and Settings\Bioanalyzer\2013-08-27\2013-08-27\_008.xad

Created: 8/27/2013 4:23:15 PM  
Modified: 8/27/2013 5:05:57 PM

**Gel Image**





Assay Class: High Sensitivity DNA Assay  
 Data Path: C:\...ents and Settings\Bioanalyzer\2013-08-27\2013-08-27\_008.xad

Created: 8/27/2013 4:23:15 PM  
 Modified: 8/27/2013 5:05:57 PM

**Run Logbook**

Description	Number	Source	Category	Sub Category	Time	Time Zone	User	Host
Run ended on port 1 (Number of wells acquired: 12)		Instrument	Run		8/27/2013 5:03:44 PM	(GMT --07:00) Pacific Standard Time	UC Davis	D8XSMGH1
Run started on port 1 (File: C:\Documents and Settings\Bioanalyzer\2013-08-27\2013-08-27_008.xad)		Instrument	Run		8/27/2013 4:23:21 PM	(GMT --07:00) Pacific Standard Time	UC Davis	D8XSMGH1
Product Number : G2938B		Instrument	Run		8/27/2013 4:23:21 PM	(GMT --07:00) Pacific Standard Time	UC Davis	D8XSMGH1
Name :		Instrument	Run		8/27/2013 4:23:21 PM	(GMT --07:00) Pacific Standard Time	UC Davis	D8XSMGH1
Vendor : Agilent Technologies		Instrument	Run		8/27/2013 4:23:21 PM	(GMT --07:00) Pacific Standard Time	UC Davis	D8XSMGH1
Serial# : DE13701086		Instrument	Run		8/27/2013 4:23:21 PM	(GMT --07:00) Pacific Standard Time	UC Davis	D8XSMGH1
Firmware : C.01.069		Instrument	Run		8/27/2013 4:23:21 PM	(GMT --07:00) Pacific Standard Time	UC Davis	D8XSMGH1
Cartridge : Electrode		Instrument	Run		8/27/2013 4:23:21 PM	(GMT --07:00) Pacific Standard Time	UC Davis	D8XSMGH1