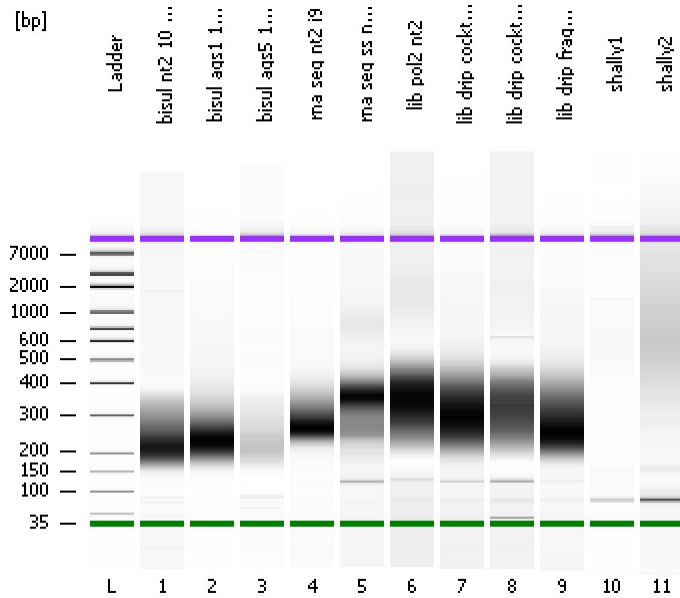


Assay Class: High Sensitivity DNA Assay  
Data Path: C:\...ents and Settings\Bioanalyzer\2013-08-28\2013-08-28\_004.xad

Created: 8/28/2013 2:26:53 PM  
Modified: 8/28/2013 3:08:43 PM

### Electrophoresis File Run Summary



#### Instrument Information:

Instrument Name: DE13701086      Firmware: C.01.069  
Serial#: DE13701086      Type: G2938B

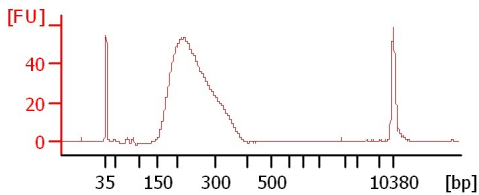
#### Assay Information:

Assay Origin Path: C:\Program Files\Agilent\2100 bioanalyzer\2100 expert\assays\dsDNA\High Sensitivity DNA.xsy  
Assay Class: High Sensitivity DNA Assay  
Version: 1.03  
Assay Comments: Copyright © 2003-2010 Agilent Technologies

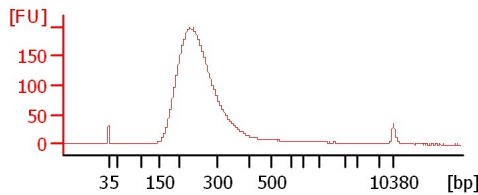
#### Chip Information:

Chip Lot #:   
Reagent Kit Lot #:   
Chip Comments:

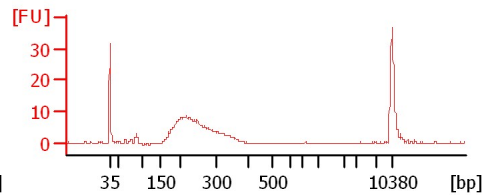
bisul nt2 10 cycles



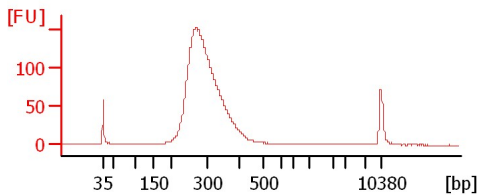
bisul ags1 10 cycles



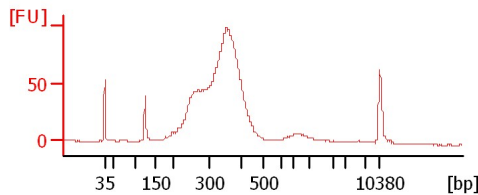
bisul ags5 10 cycles



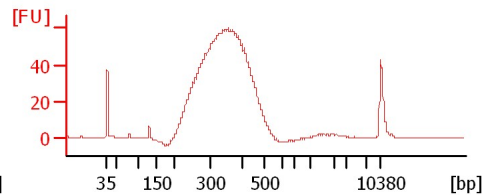
rna seq nt2 i9



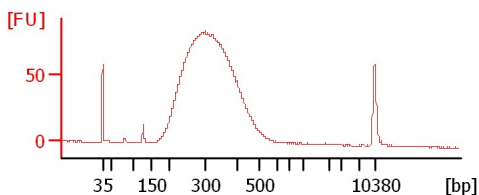
rna seq ss nt2 i10



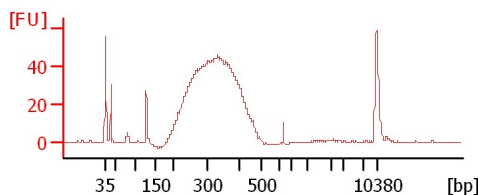
lib pol2 nt2



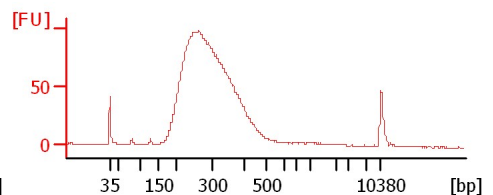
lib drip cocktail1 nt2



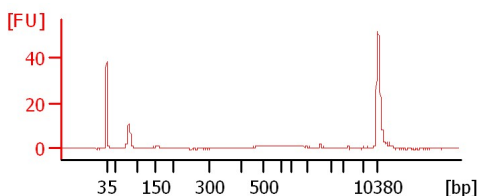
lib drip cocktail2 nt2



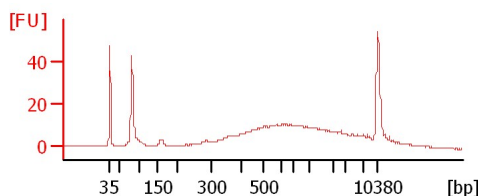
lib drip fragm nt2



shally1



shally2



Assay Class: High Sensitivity DNA Assay  
Data Path: C:\...ents and Settings\Bioanalyzer\2013-08-28\2013-08-28\_004.xad

Created: 8/28/2013 2:26:53 PM  
Modified: 8/28/2013 3:08:43 PM

**Electrophoresis File Run Summary (Chip Summary)**

Sample Name	Sample Comment	Rest. Digest	Status	Observation	Result Label	Result Color
bisul nt2 10 cycles		<input type="checkbox"/>	✓			
bisul ags1 10 cycles		<input type="checkbox"/>	✓			
bisul ags5 10 cycles		<input type="checkbox"/>	✓			
rna seq nt2 i9		<input type="checkbox"/>	✓			
rna seq ss nt2 i10		<input type="checkbox"/>	✓			
lib pol2 nt2		<input type="checkbox"/>	✓			
lib drip cocktail1 nt2		<input type="checkbox"/>	✓			
lib drip cocktail2 nt2		<input type="checkbox"/>	✓			
lib drip fragm nt2		<input type="checkbox"/>	✓			
shally1		<input type="checkbox"/>	✓			
shally2		<input type="checkbox"/>	✓			
Ladder		<input type="checkbox"/>	✓			

**Chip Lot #**

**Reagent Kit Lot #**

**Chip Comments :**

Assay Class: High Sensitivity DNA Assay  
Data Path: C:\...ents and Settings\Bioanalyzer\2013-08-28\2013-08-28\_004.xad

Created: 8/28/2013 2:26:53 PM  
Modified: 8/28/2013 3:08:43 PM

**Electrophoresis Assay Details**

**General Analysis Settings**

Number of Available Sample and Ladder Wells (Max.) : 12  
Minimum Visible Range [s] : 32  
Maximum Visible Range [s] : 138  
Start Analysis Time Range [s] : 33  
End Analysis Time Range [s] : 137.5  
Ladder Concentration [pg/ $\mu$ l] : 1950  
Uses Standard Area for Ladder Fragments  
Lower Marker Concentration [pg/ $\mu$ l] : 125  
Upper Marker Concentration [pg/ $\mu$ l] : 75  
Used Upper Marker for Quantitation  
Standard Curve Fit is Point to Point  
Show Data Aligned to Lower and Upper Marker

**Integrator Settings**

Integration Start Time [s] : 33.05  
Integration End Time [s] : 137  
Slope Threshold : 0.8  
Height Threshold [FU] : 5  
Area Threshold : 0.1  
Width Threshold [s] : 0.6  
Baseline Plateau [s] : 0.5

**Filter Settings**

Filter Width [s] : 0.5  
Polynomial Order : 4

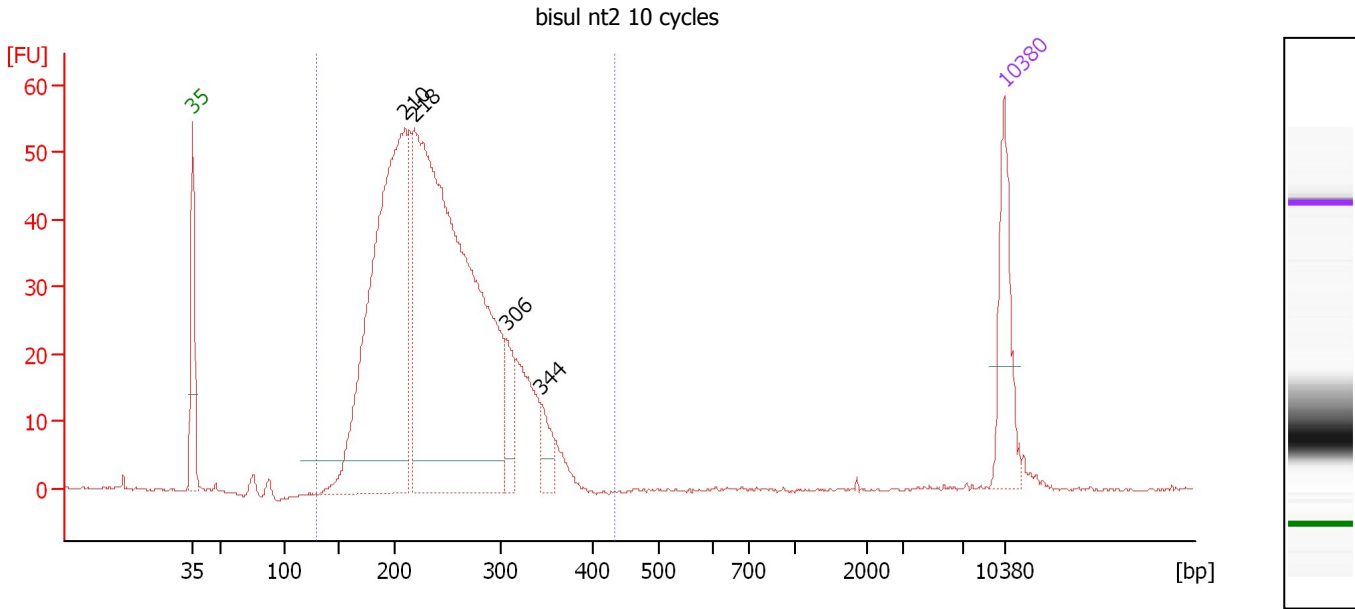
**Ladder**

Ladder Peak	Size	Area
1	35	160
2	50	210
3	100	208
4	150	221
5	200	242
6	300	270
7	400	305
8	500	306
9	600	336
10	700	321
11	1000	366
12	2000	413
13	3000	411
14	7000	400
15	10380	214

Assay Class: High Sensitivity DNA Assay  
 Data Path: C:\...ents and Settings\Bioanalyzer\2013-08-28\2013-08-28\_004.xad

Created: 8/28/2013 2:26:53 PM  
 Modified: 8/28/2013 3:08:43 PM

**Electropherogram Summary**



**Overall Results for sample 1 : bisul nt2 10 cycles**

Number of peaks found: 4                      Corr. Area 1: 945.8  
 Noise: 0.2

**Peak table for sample 1 : bisul nt2 10 cycles**

Peak	Size [bp]	Conc. [pg/μl]	Molarity [pmol/l]	Observations
1	35	125.00	5,411.3	Lower Marker
2	210	728.77	5,259.6	
3	218	1,130.40	7,856.7	
4	306	52.54	260.3	
5	344	33.10	146.0	
6	10,380	75.00	10.9	Upper Marker

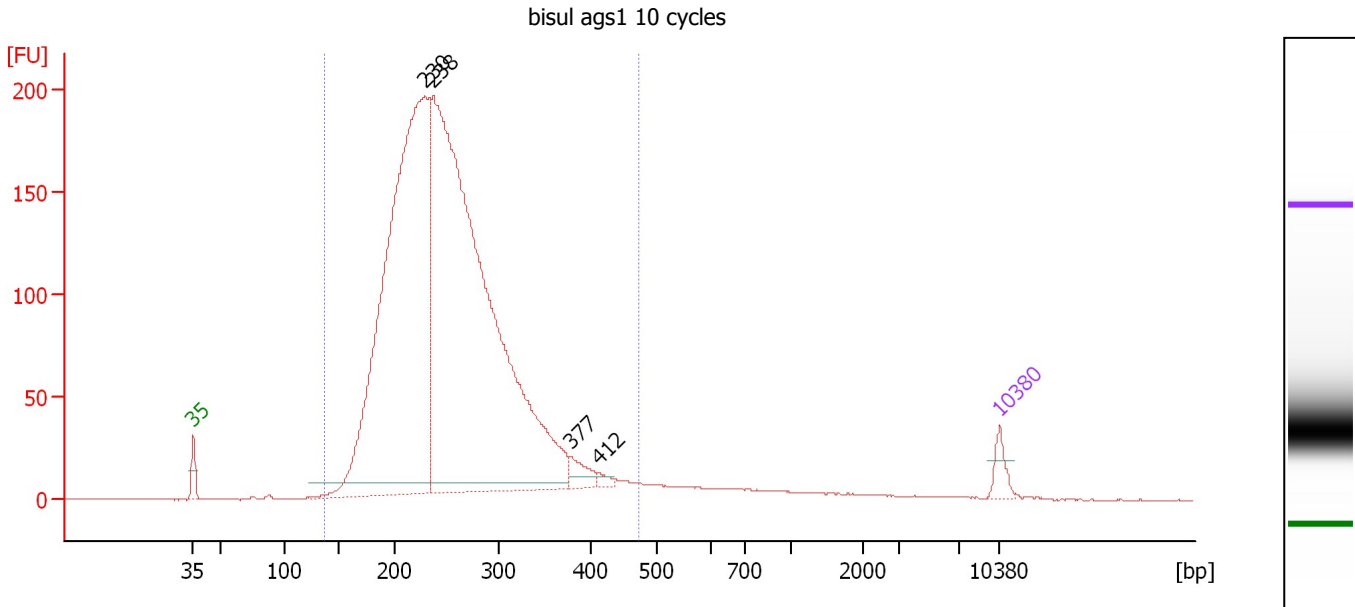
**Region table for sample 1 : bisul nt2 10 cycles**

From [bp]	To [bp]	Average Size [bp]	Molarity [pmol/l]	Conc. [pg/μl]	Corr. Area	% of Total	Size distribution in CV [%]	Color
128	431	242	13,402.5	2,039.08	945.8	99	20.2	Blue

Assay Class: High Sensitivity DNA Assay  
 Data Path: C:\...ents and Settings\Bioanalyzer\2013-08-28\2013-08-28\_004.xad

Created: 8/28/2013 2:26:53 PM  
 Modified: 8/28/2013 3:08:43 PM

**Electropherogram Summary Continued ...**



**Overall Results for sample 2 : bisul ags1 10 cycles**

Number of peaks found: 4                      Corr. Area 1: 3,311.2  
 Noise: 0.1

**Peak table for sample 2 : bisul ags1 10 cycles**

Peak	Size [bp]	Conc. [pg/μl]	Molarity [pmol/l]	Observations
1	35	125.00	5,411.3	Lower Marker
2	230	5,441.73	35,923.9	
3	238	6,827.28	43,532.3	
4	377	116.79	469.9	
5	412	33.37	122.8	
6	10,380	75.00	10.9	Upper Marker

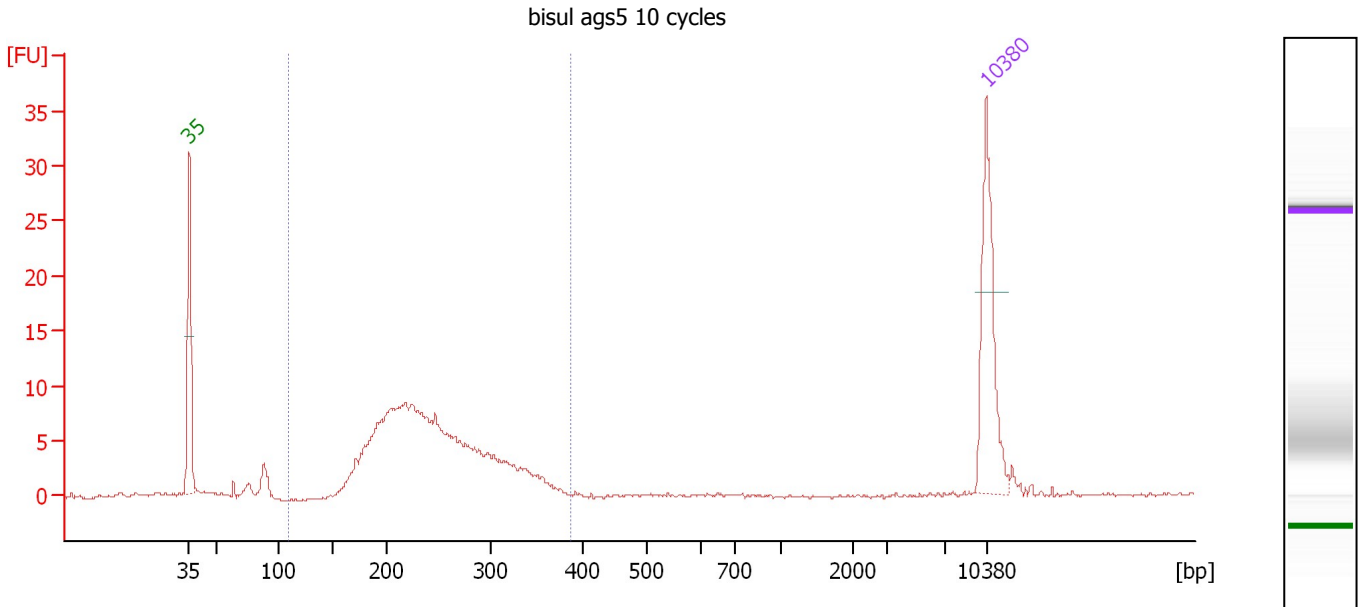
**Region table for sample 2 : bisul ags1 10 cycles**

From [bp]	To [bp]	Average Size [bp]	Molarity [pmol/l]	Conc. [pg/μl]	Corr. Area	% of Total	Size distribution in CV [%]	Color
137	472	254	80,354.3	12,782.63	3,311.2	96	21.6	Blue

Assay Class: High Sensitivity DNA Assay  
 Data Path: C:\...ents and Settings\Bioanalyzer\2013-08-28\2013-08-28\_004.xad

Created: 8/28/2013 2:26:53 PM  
 Modified: 8/28/2013 3:08:43 PM

**Electropherogram Summary Continued ...**



**Overall Results for sample 3 : bisul ags5 10 cycles**

Number of peaks found: 0                      Corr. Area 1: 142.1  
 Noise: 0.1

**Peak table for sample 3 : bisul ags5 10 cycles**

Peak	Size [bp]	Conc. [pg/μl]	Molarity [pmol/l]	Observations
1	35	125.00	5,411.3	Lower Marker
2	10,380	75.00	10.9	Upper Marker

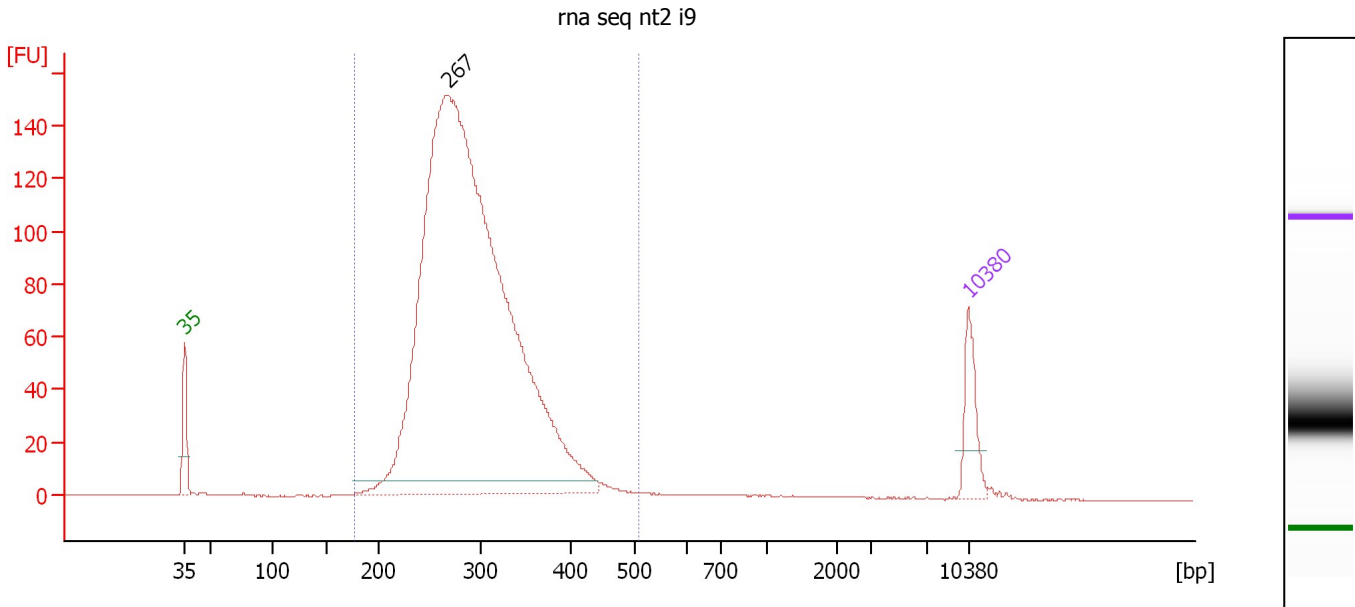
**Region table for sample 3 : bisul ags5 10 cycles**

From [bp]	To [bp]	Average Size [bp]	Molarity [pmol/l]	Conc. [pg/μl]	Corr. Area	% of Total	Size distribution in CV [%]	Color
109	387	245	3,220.4	495.53	142.1	88	20.3	Blue

Assay Class: High Sensitivity DNA Assay  
 Data Path: C:\...ents and Settings\Bioanalyzer\2013-08-28\2013-08-28\_004.xad

Created: 8/28/2013 2:26:53 PM  
 Modified: 8/28/2013 3:08:43 PM

**Electropherogram Summary Continued ...**



**Overall Results for sample 4 : rna seq nt2 i9**

Number of peaks found: 1                      Corr. Area 1: 1,978.5  
 Noise: 0.2

**Peak table for sample 4 : rna seq nt2 i9**

Peak	Size [bp]	Conc. [pg/μl]	Molarity [pmol/l]	Observations
1	35	125.00	5,411.3	Lower Marker
2	267	3,279.49	18,604.2	
3	10,380	75.00	10.9	Upper Marker

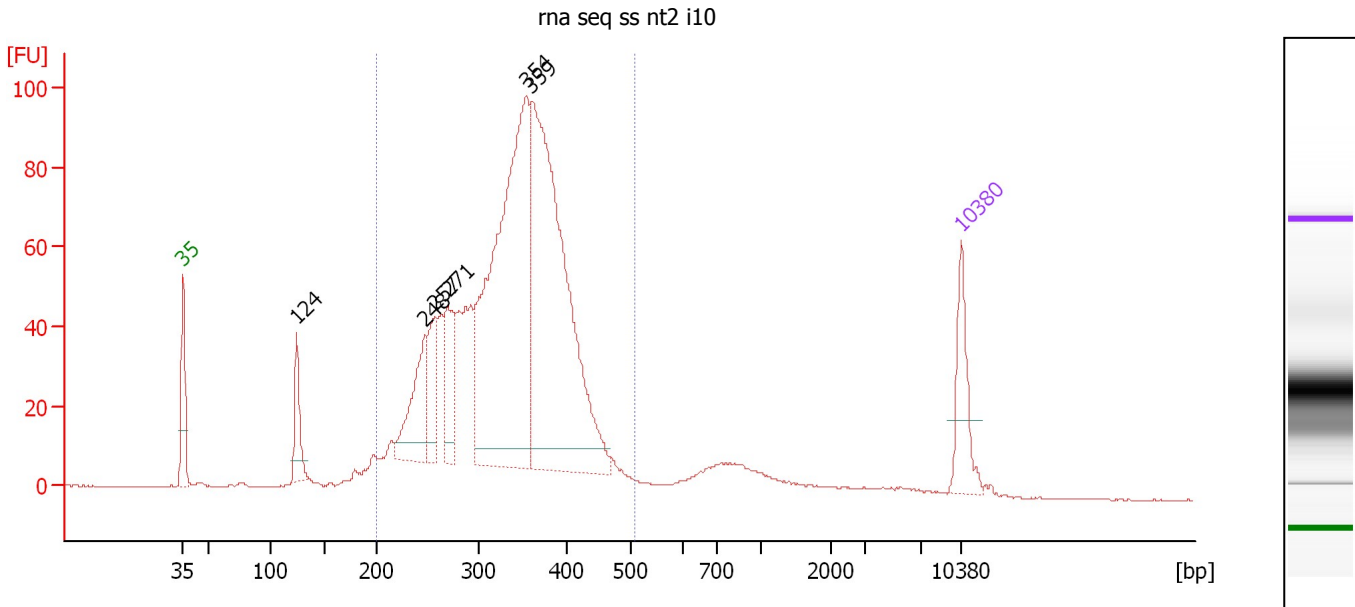
**Region table for sample 4 : rna seq nt2 i9**

From [bp]	To [bp]	Average Size [bp]	Molarity [pmol/l]	Conc. [pg/μl]	Corr. Area	% of Total	Size distribution in CV [%]	Color
176	507	293	16,967.0	3,190.86	1,978.5	97	16.2	Blue

Assay Class: High Sensitivity DNA Assay  
 Data Path: C:\...ents and Settings\Bioanalyzer\2013-08-28\2013-08-28\_004.xad

Created: 8/28/2013 2:26:53 PM  
 Modified: 8/28/2013 3:08:43 PM

**Electropherogram Summary Continued ...**



**Overall Results for sample 5 : rna seq ss nt2 i10**

Number of peaks found: 6                      Corr. Area 1: 1,437.8  
 Noise: 0.1

**Peak table for sample 5 : rna seq ss nt2 i10**

Peak	Size [bp]	Conc. [pg/μl]	Molarity [pmol/l]	Observations
1	35	125.00	5,411.3	Lower Marker
2	124	90.03	1,096.4	
3	248	147.35	900.2	
4	257	90.25	531.1	
5	271	119.76	670.6	
6	354	828.77	3,549.6	
7	359	848.14	3,578.3	
8	10,380	75.00	10.9	Upper Marker

**Region table for sample 5 : rna seq ss nt2 i10**

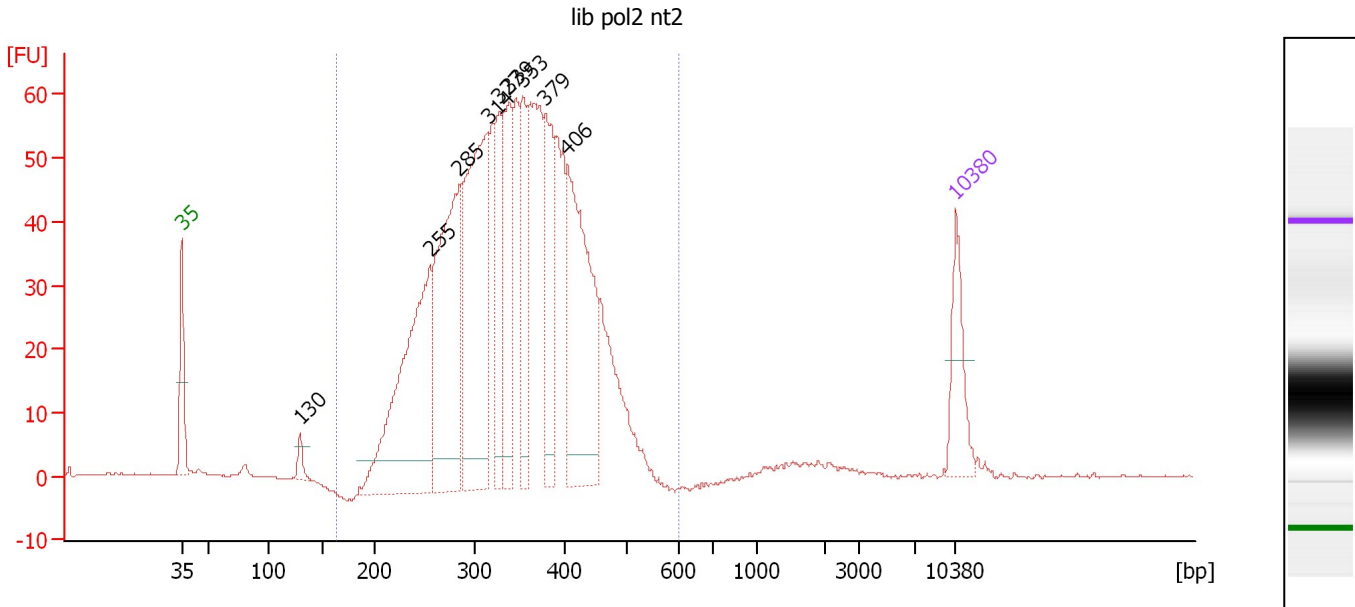
From [bp]	To [bp]	Average Size [bp]	Molarity [pmol/l]	Conc. [pg/μl]	Corr. Area	% of Total	Size distribution in CV [%]	Color
200	509	335	12,873.0	2,726.82	1,437.8	89	17.3	Blue



Assay Class: High Sensitivity DNA Assay  
 Data Path: C:\...ents and Settings\Bioanalyzer\2013-08-28\2013-08-28\_004.xad

Created: 8/28/2013 2:26:53 PM  
 Modified: 8/28/2013 3:08:43 PM

**Electropherogram Summary Continued ...**



**Overall Results for sample 6 : lib pol2 nt2**

Number of peaks found: 9                      Corr. Area 1: 1,257.7  
 Noise: 0.1

**Peak table for sample 6 : lib pol2 nt2**

Peak	Size [bp]	Conc. [pg/μl]	Molarity [pmol/l]	Observations
1	35	125.00	5,411.3	Lower Marker
2	130	23.85	279.1	
3	255	514.82	3,059.3	
4	285	469.61	2,500.7	
5	314	500.27	2,412.3	
6	327	151.71	702.1	
7	339	193.63	865.9	
8	353	147.90	634.5	
9	379	195.93	783.3	
10	406	381.56	1,424.1	
11	10,380	75.00	10.9	Upper Marker

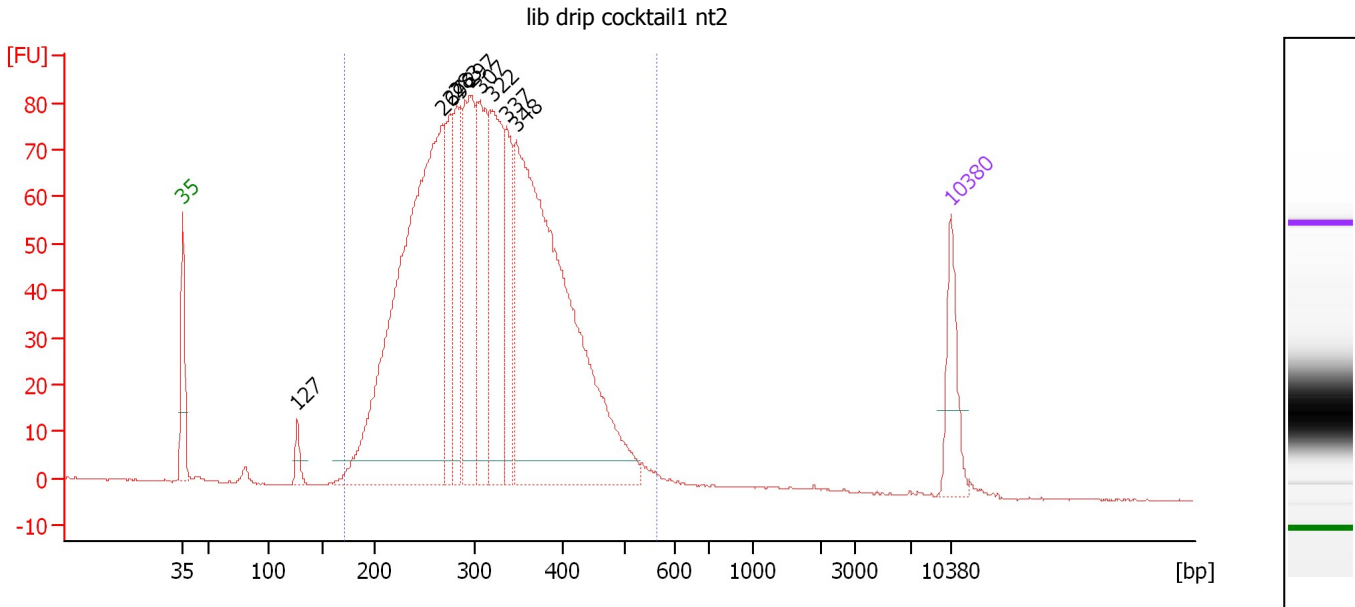
**Region table for sample 6 : lib pol2 nt2**

From [bp]	To [bp]	Average Size [bp]	Molarity [pmol/l]	Conc. [pg/μl]	Corr. Area	% of Total	Size distribution in CV [%]	Color
165	602	344	15,698.4	3,368.87	1,257.7	97	19.9	Blue

Assay Class: High Sensitivity DNA Assay  
 Data Path: C:\...ents and Settings\Bioanalyzer\2013-08-28\2013-08-28\_004.xad

Created: 8/28/2013 2:26:53 PM  
 Modified: 8/28/2013 3:08:43 PM

**Electropherogram Summary Continued ...**



**Overall Results for sample 7 : lib drip cocktail1 nt2**

Number of peaks found: 9                      Corr. Area 1: 1,876.1  
 Noise: 0.1

**Peak table for sample 7 : lib drip cocktail1 nt2**

Peak	Size [bp]	Conc. [pg/µl]	Molarity [pmol/l]	Observations
1	35	125.00	5,411.3	Lower Marker
2	127	31.02	370.6	
3	269	1,180.94	6,662.9	
4	276	168.81	926.7	
5	283	194.72	1,042.8	
6	297	311.61	1,588.2	
7	307	276.98	1,368.9	
8	322	302.46	1,424.6	
9	337	158.57	713.4	
10	348	1,108.39	4,822.0	
11	10,380	75.00	10.9	Upper Marker

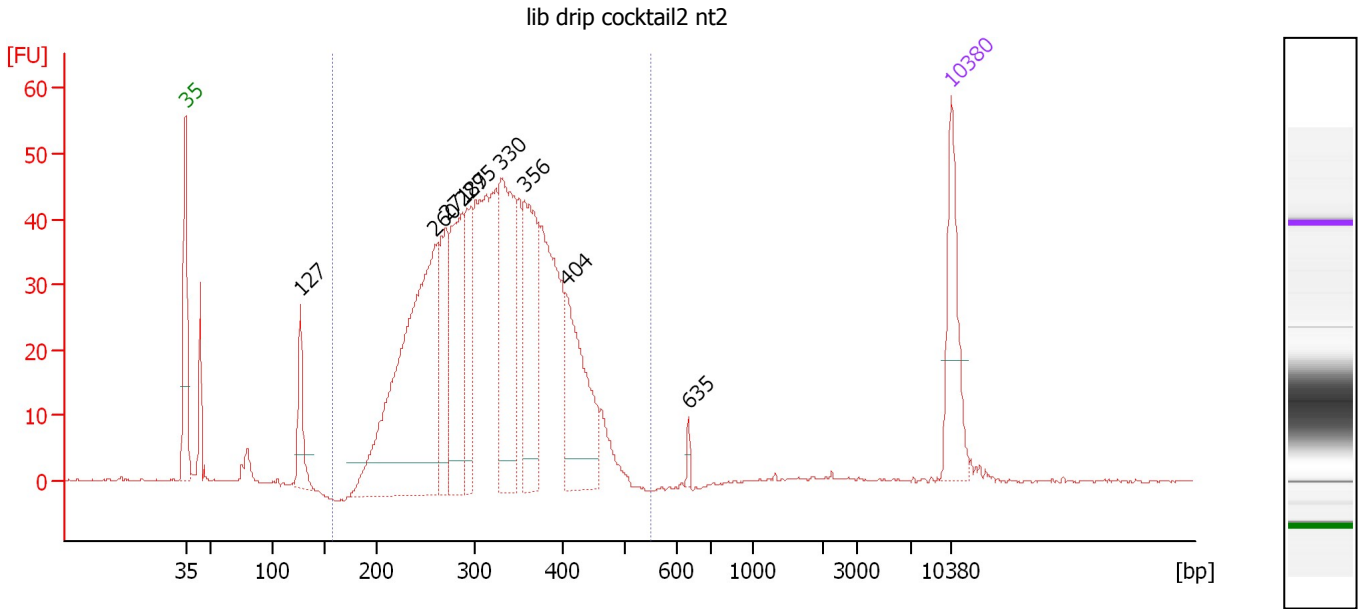
**Region table for sample 7 : lib drip cocktail1 nt2**

From [bp]	To [bp]	Average Size [bp]	Molarity [pmol/l]	Conc. [pg/µl]	Corr. Area	% of Total	Size distribution in CV [%]	Color
172	565	318	19,392.0	3,810.86	1,876.1	97	22.4	Blue

Assay Class: High Sensitivity DNA Assay  
 Data Path: C:\...ents and Settings\Bioanalyzer\2013-08-28\2013-08-28\_004.xad

Created: 8/28/2013 2:26:53 PM  
 Modified: 8/28/2013 3:08:43 PM

**Electropherogram Summary Continued ...**



**Overall Results for sample 8 : lib drip cocktail2 nt2**

Number of peaks found: 9      Corr. Area 1: 958.8  
 Noise: 0.2

**Peak table for sample 8 : lib drip cocktail2 nt2**

Peak	Size [bp]	Conc. [pg/μl]	Molarity [pmol/l]	Observations
1	35	125.00	5,411.3	Lower Marker
2	127	67.55	804.8	
3	260	510.17	2,974.8	
4	271	118.80	665.4	
5	287	177.25	937.3	
6	295	90.49	464.6	
7	330	222.02	1,020.7	
8	356	166.62	709.8	
9	404	150.26	563.2	
10	635	5.58	13.3	
11	10,380	75.00	10.9	Upper Marker

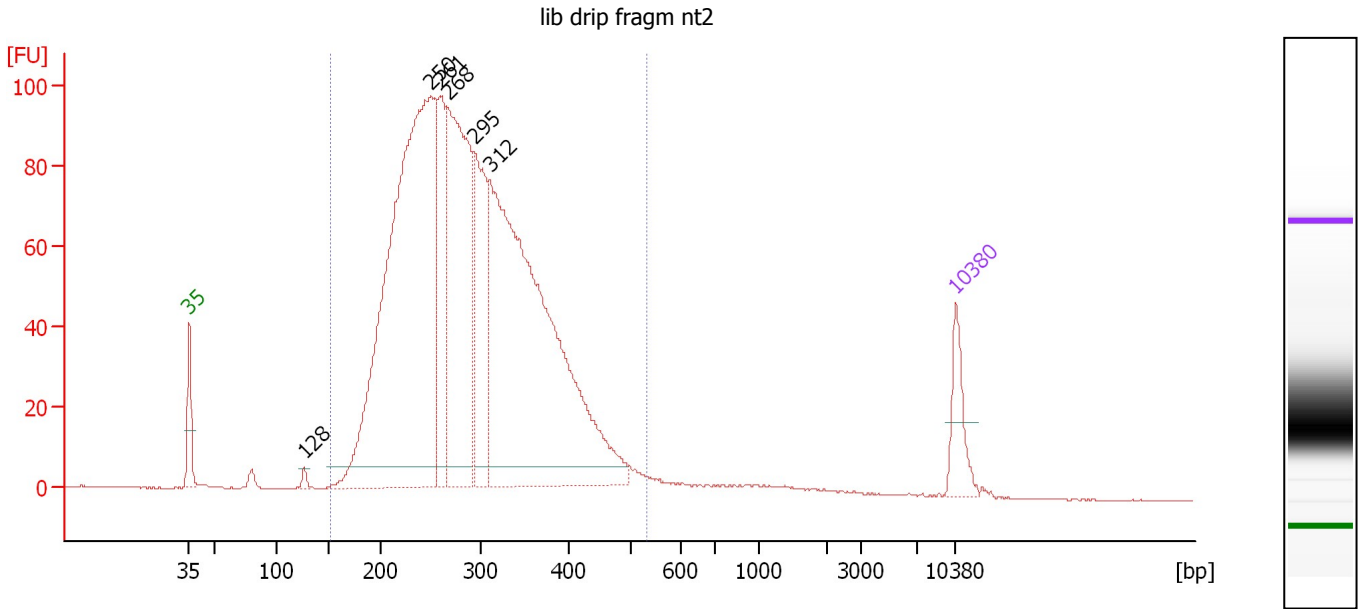
**Region table for sample 8 : lib drip cocktail2 nt2**

From [bp]	To [bp]	Average Size [bp]	Molarity [pmol/l]	Conc. [pg/μl]	Corr. Area	% of Total	Size distribution in CV [%]	Color
158	550	322	9,714.4	1,955.98	958.8	94	19.6	Blue

Assay Class: High Sensitivity DNA Assay  
 Data Path: C:\...ents and Settings\Bioanalyzer\2013-08-28\2013-08-28\_004.xad

Created: 8/28/2013 2:26:53 PM  
 Modified: 8/28/2013 3:08:43 PM

**Electropherogram Summary Continued ...**



**Overall Results for sample 9 : lib drip fragm nt2**

Number of peaks found: 6                      Corr. Area 1: 2,092.1  
 Noise: 0.1

**Peak table for sample 9 : lib drip fragm nt2**

Peak	Size [bp]	Conc. [pg/µl]	Molarity [pmol/l]	Observations
1	35	125.00	5,411.3	Lower Marker
2	128	15.16	180.1	
3	250	1,855.02	11,223.2	
4	261	304.09	1,768.3	
5	268	812.12	4,591.0	
6	295	353.83	1,819.3	
7	312	1,614.28	7,851.6	
8	10,380	75.00	10.9	Upper Marker

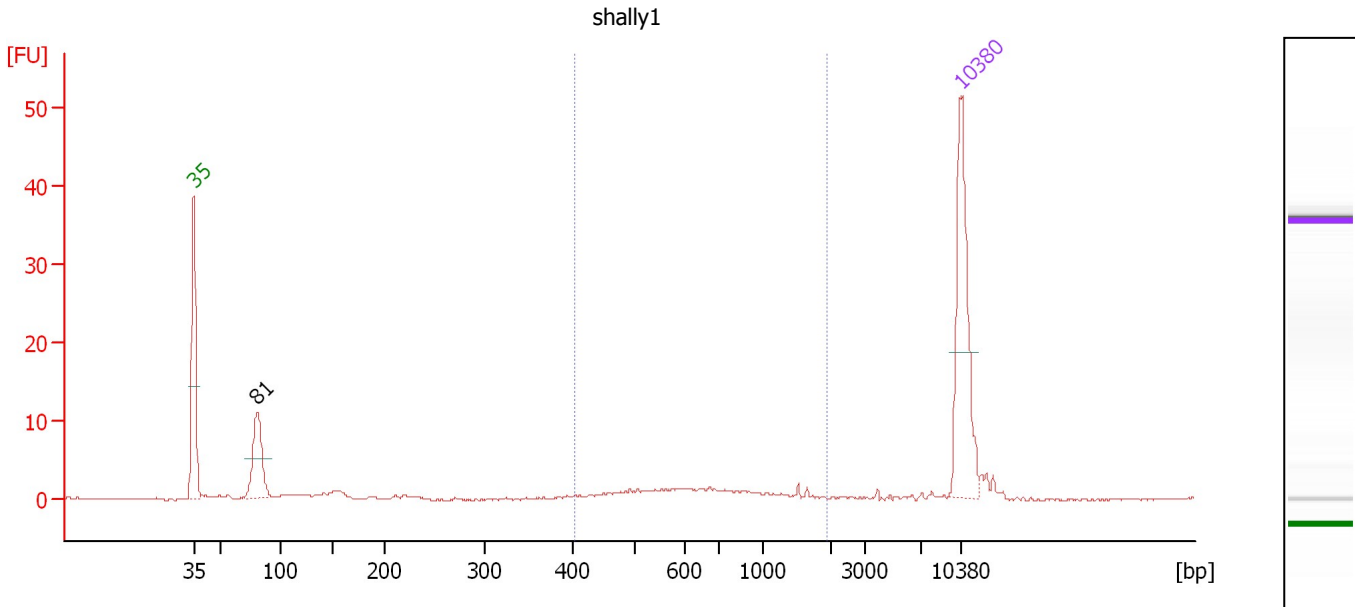
**Region table for sample 9 : lib drip fragm nt2**

From [bp]	To [bp]	Average Size [bp]	Molarity [pmol/l]	Conc. [pg/µl]	Corr. Area	% of Total	Size distribution in CV [%]	Color
153	533	294	28,094.4	5,089.89	2,092.1	97	23.2	Blue

Assay Class: High Sensitivity DNA Assay  
 Data Path: C:\...ents and Settings\Bioanalyzer\2013-08-28\2013-08-28\_004.xad

Created: 8/28/2013 2:26:53 PM  
 Modified: 8/28/2013 3:08:43 PM

**Electropherogram Summary Continued ...**



**Overall Results for sample 10 : shally1**

Number of peaks found: 1                      Corr. Area 1: 21.5  
 Noise: 0.1

**Peak table for sample 10 : shally1**

Peak	Size [bp]	Conc. [pg/μl]	Molarity [pmol/l]	Observations
1	35	125.00	5,411.3	Lower Marker
2	81	63.14	1,179.8	
3	10,380	75.00	10.9	Upper Marker

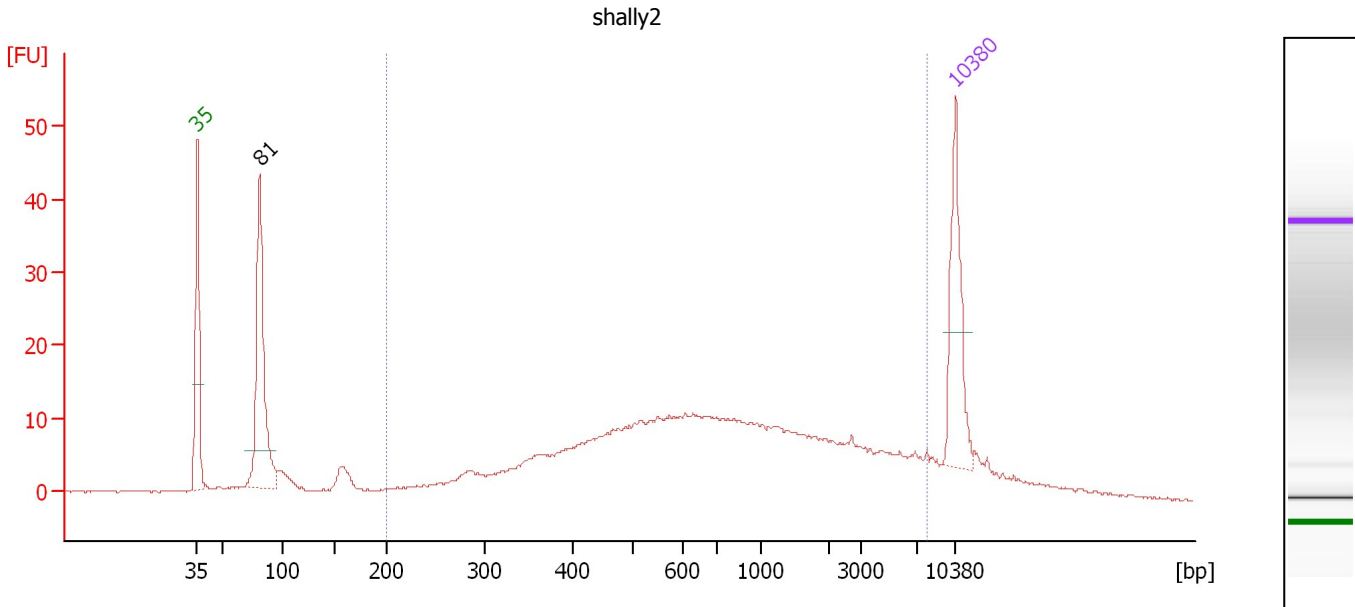
**Region table for sample 10 : shally1**

From [bp]	To [bp]	Average Size [bp]	Molarity [pmol/l]	Conc. [pg/μl]	Corr. Area	% of Total	Size distribution in CV [%]	Color
403	1,930	741	95.1	39.39	21.5	34	44.2	Blue

Assay Class: High Sensitivity DNA Assay  
 Data Path: C:\...ents and Settings\Bioanalyzer\2013-08-28\2013-08-28\_004.xad

Created: 8/28/2013 2:26:53 PM  
 Modified: 8/28/2013 3:08:43 PM

**Electropherogram Summary Continued ...**



**Overall Results for sample 11 : shally2**

Number of peaks found: 1                      Corr. Area 1: 376.6  
 Noise: 0.1

**Peak table for sample 11 : shally2**

Peak	Size [bp]	Conc. [pg/μl]	Molarity [pmol/l]	Observations
1	35	125.00	5,411.3	Lower Marker
2	81	220.36	4,134.4	
3	10,380	75.00	10.9	Upper Marker

**Region table for sample 11 : shally2**

From [bp]	To [bp]	Average Size [bp]	Molarity [pmol/l]	Conc. [pg/μl]	Corr. Area	% of Total	Size distribution in CV [%]	Color
200	7,866	1,349	2,007.8	761.89	376.6	74	100.0	Blue