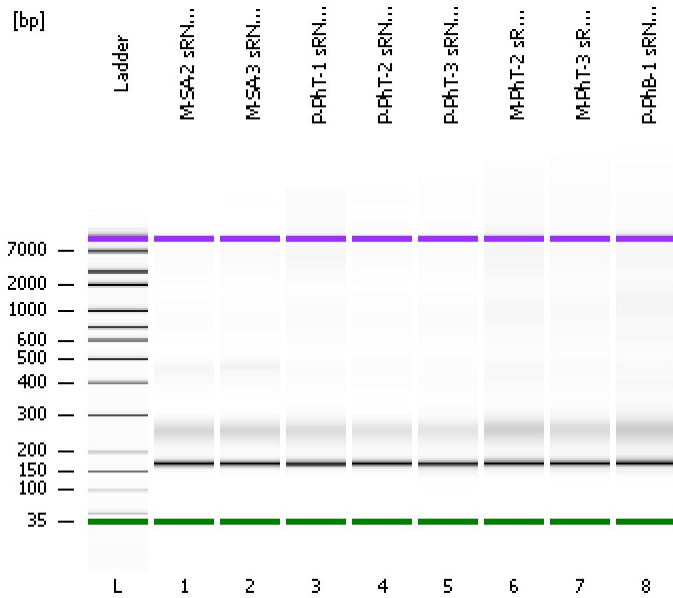


Assay Class: High Sensitivity DNA Assay
Data Path: C:\...ttings\Bioanalyzer\2013-08-28\2013-08-28_005_sRNA_Lib-2.xad

Created: 8/28/2013 3:30:31 PM
Modified: 8/28/2013 4:19:09 PM

Electrophoresis File Run Summary



Instrument Information:

Instrument Name: DE13701086 Firmware: C.01.069
Serial#: DE13701086 Type: G2938B

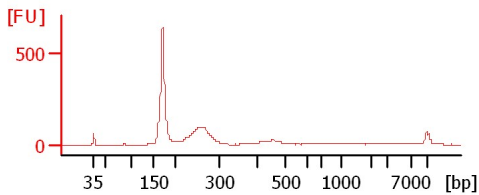
Assay Information:

Assay Origin Path: C:\Program Files\Agilent\2100 bioanalyzer\2100 expert\assays\dsDNA\High Sensitivity DNA.xsy
Assay Class: High Sensitivity DNA Assay
Version: 1.03
Assay Comments: Copyright © 2003-2010 Agilent Technologies

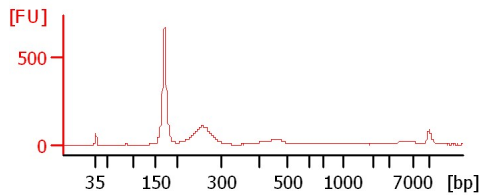
Chip Information:

Chip Lot #:
Reagent Kit Lot #:
Chip Comments:

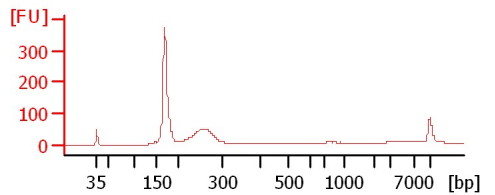
M-SA-2 sRNA Lib



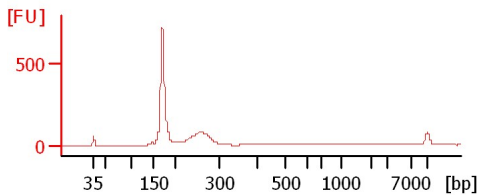
M-SA-3 sRNA Lib



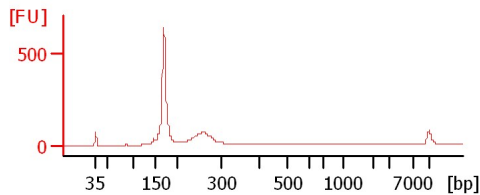
P-PhT-1 sRNA Lib



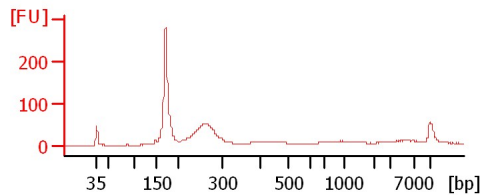
P-PhT-2 sRNA Lib



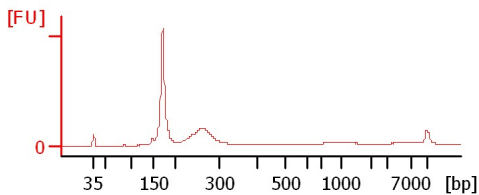
P-PhT-3 sRNA Lib



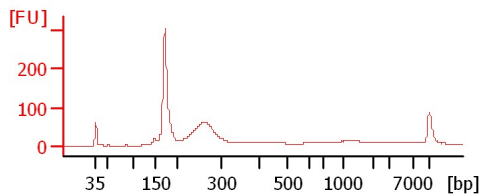
M-PhT-2 sRNA Lib



M-PhT-3 sRNA Lib



P-PhB-1 sRNA Lib 1:2



Assay Class: High Sensitivity DNA Assay
 Data Path: C:\...ttings\Bioanalyzer\2013-08-28\2013-08-28_005_sRNA_Lib-2.xad

Created: 8/28/2013 3:30:31 PM
 Modified: 8/28/2013 4:19:09 PM

Electrophoresis File Run Summary (Chip Summary)

Sample Name	Sample Comment	Rest. Digest	Status	Observation	Result Label	Result Color
M-SA-2 sRNA Lib		<input type="checkbox"/>				
M-SA-3 sRNA Lib		<input type="checkbox"/>				
P-PhT-1 sRNA Lib		<input type="checkbox"/>				
P-PhT-2 sRNA Lib		<input type="checkbox"/>				
P-PhT-3 sRNA Lib		<input type="checkbox"/>				
M-PhT-2 sRNA Lib		<input type="checkbox"/>				
M-PhT-3 sRNA Lib		<input type="checkbox"/>				
P-PhB-1 sRNA Lib 1:2		<input type="checkbox"/>				
Ladder		<input type="checkbox"/>				

Chip Lot #

Reagent Kit Lot #

Chip Comments :

Assay Class: High Sensitivity DNA Assay
Data Path: C:\...ttings\Bioanalyzer\2013-08-28\2013-08-28_005_sRNA_Lib-2.xad

Created: 8/28/2013 3:30:31 PM
Modified: 8/28/2013 4:19:09 PM

Electrophoresis Assay Details

General Analysis Settings

Number of Available Sample and Ladder Wells (Max.) : 12
Minimum Visible Range [s] : 32
Maximum Visible Range [s] : 138
Start Analysis Time Range [s] : 33
End Analysis Time Range [s] : 137.5
Ladder Concentration [pg/μl] : 1950
Uses Standard Area for Ladder Fragments
Lower Marker Concentration [pg/μl] : 125
Upper Marker Concentration [pg/μl] : 75
Used Upper Marker for Quantitation
Standard Curve Fit is Point to Point
Show Data Aligned to Lower and Upper Marker

Integrator Settings

Integration Start Time [s] : 33.05
Integration End Time [s] : 137
Slope Threshold : 0.8
Height Threshold [FU] : 5
Area Threshold : 0.1
Width Threshold [s] : 0.6
Baseline Plateau [s] : 0.5

Filter Settings

Filter Width [s] : 0.5
Polynomial Order : 4

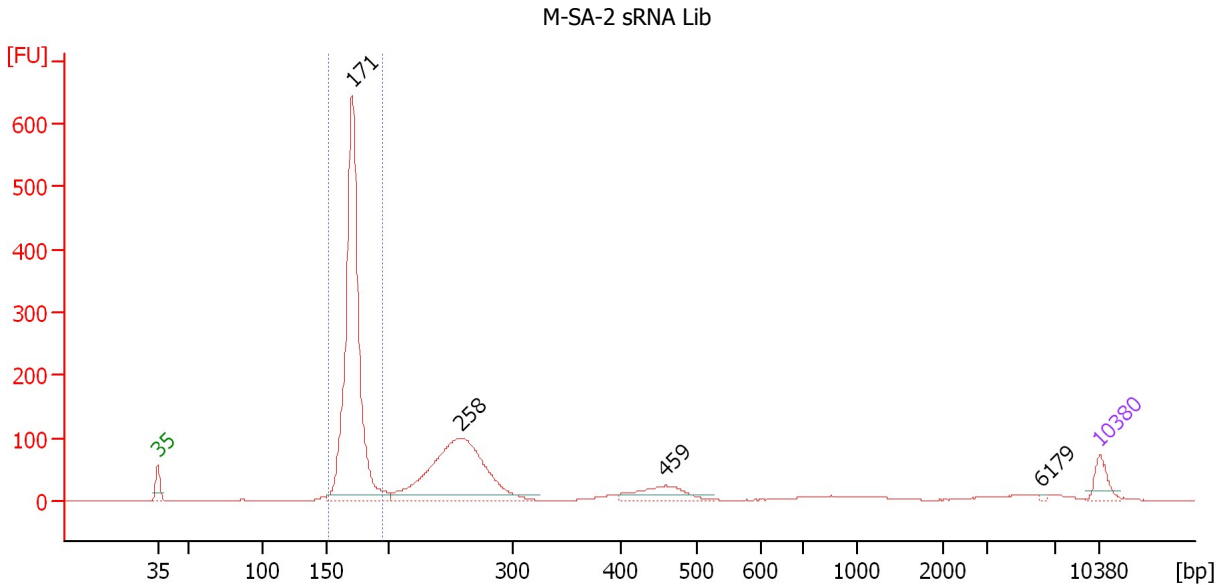
Ladder

Ladder Peak	Size	Area
1	35	160
2	50	210
3	100	208
4	150	221
5	200	242
6	300	270
7	400	305
8	500	306
9	600	336
10	700	321
11	1000	366
12	2000	413
13	3000	411
14	7000	400
15	10380	214

Assay Class: High Sensitivity DNA Assay
 Data Path: C:\...ttings\Bioanalyzer\2013-08-28\2013-08-28_005_sRNA_Lib-2.xad

Created: 8/28/2013 3:30:31 PM
 Modified: 8/28/2013 4:19:09 PM

Electropherogram Summary



Setpoint Deviations for sample 1 : M-SA-2 sRNA Lib

Height Threshold [FU] : 10

Overall Results for sample 1 : M-SA-2 sRNA Lib

Number of peaks found: 4 Corr. Area 1: 1,293.1
 Noise: 0.2

Peak table for sample 1 : M-SA-2 sRNA Lib

Peak	Size [bp]	Conc. [pg/μl]	Molarity [pmol/l]	Observations
1	35	125.00	5,411.3	Lower Marker
2	171	2,543.18	22,592.0	
3	258	1,315.19	7,726.9	
4	459	177.10	584.9	
5	6,179	5.74	1.4	
6	10,380	75.00	10.9	Upper Marker

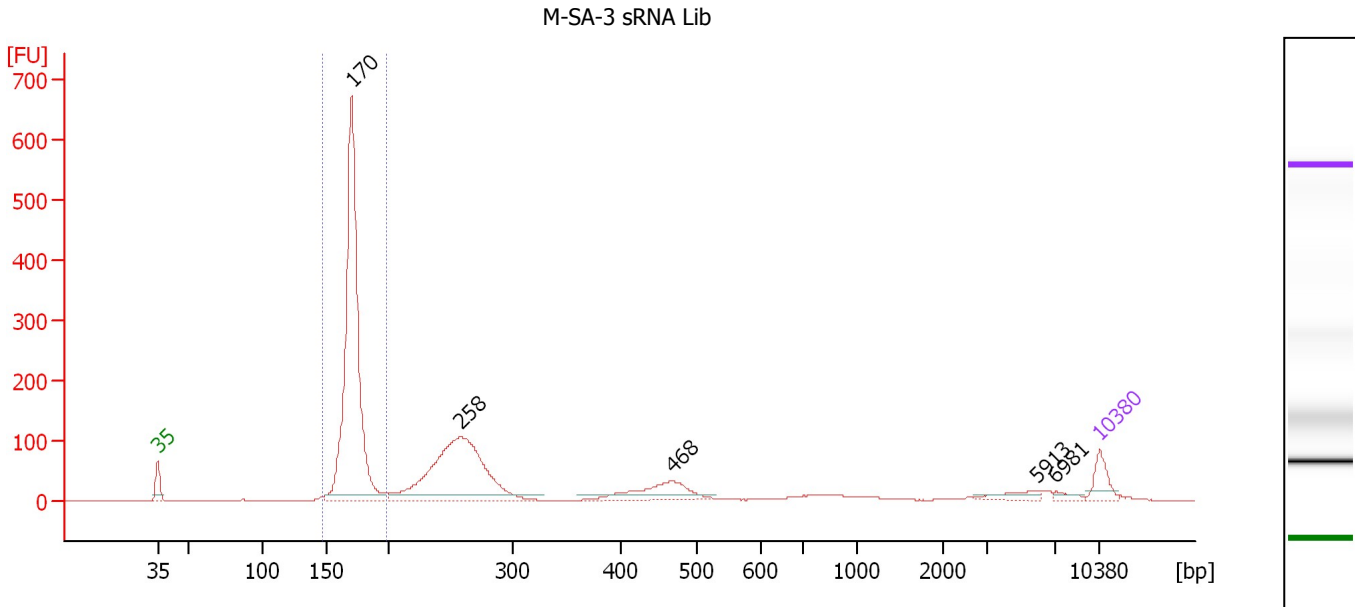
Region table for sample 1 : M-SA-2 sRNA Lib

From [bp]	To [bp]	Average Size [bp]	Molarity [pmol/l]	Conc. [pg/μl]	Corr. Area	% of Total	Size distribution in CV [%]	Color
152	194	171	22,151.2	2,501.15	1,293.1	54	3.7	Blue

Assay Class: High Sensitivity DNA Assay
 Data Path: C:\...ttings\Bioanalyzer\2013-08-28\2013-08-28_005_sRNA_Lib-2.xad

Created: 8/28/2013 3:30:31 PM
 Modified: 8/28/2013 4:19:09 PM

Electropherogram Summary Continued ...



Setpoint Deviations for sample 2 : M-SA-3 sRNA Lib

Height Threshold [FU] : 10

Overall Results for sample 2 : M-SA-3 sRNA Lib

Number of peaks found: 5 Corr. Area 1: 1,279.9
 Noise: 0.2

Peak table for sample 2 : M-SA-3 sRNA Lib

Peak	Size [bp]	Conc. [pg/μl]	Molarity [pmol/l]	Observations
1	35	125.00	5,411.3	Lower Marker
2	170	2,210.02	19,660.8	
3	258	1,190.47	6,982.9	
4	468	229.69	743.0	
5	5,913	46.26	11.9	
6	6,981	20.58	4.5	
7	10,380	75.00	10.9	Upper Marker

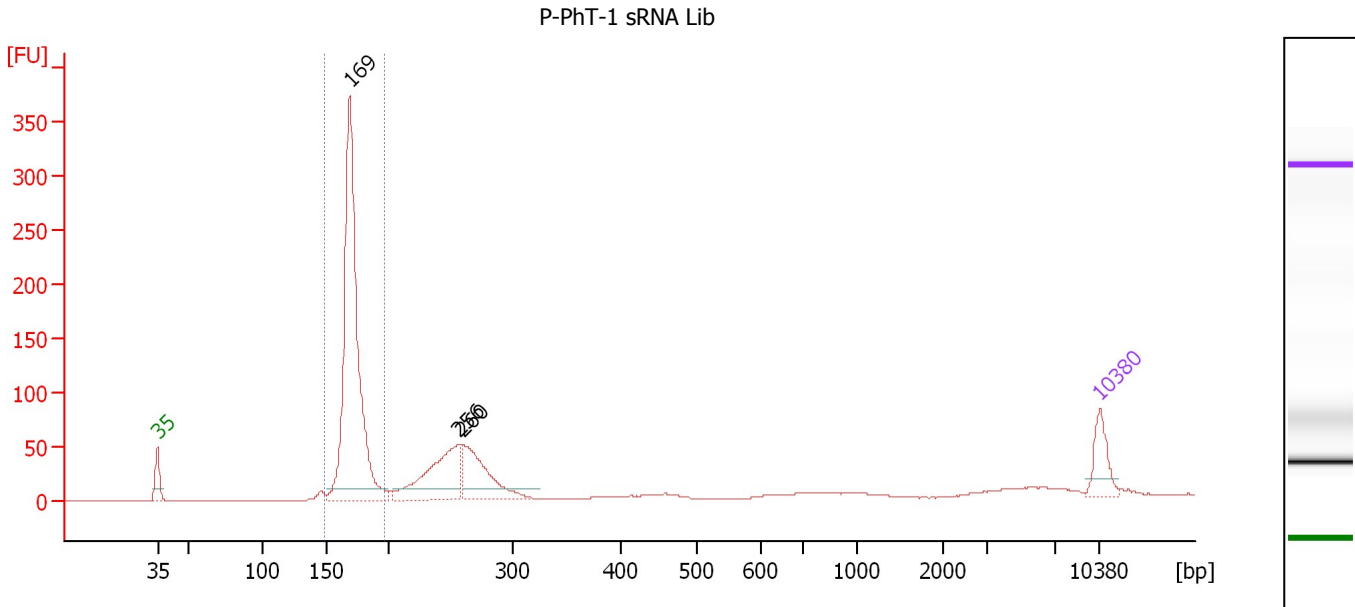
Region table for sample 2 : M-SA-3 sRNA Lib

From [bp]	To [bp]	Average Size [bp]	Molarity [pmol/l]	Conc. [pg/μl]	Corr. Area	% of Total	Size distribution in CV [%]	Color
147	197	171	19,572.4	2,205.72	1,279.9	53	3.8	Blue

Assay Class: High Sensitivity DNA Assay
 Data Path: C:\...ttings\Bioanalyzer\2013-08-28\2013-08-28_005_sRNA_Lib-2.xad

Created: 8/28/2013 3:30:31 PM
 Modified: 8/28/2013 4:19:09 PM

Electropherogram Summary Continued ...



Setpoint Deviations for sample 3 : P-PhT-1 sRNA Lib

Height Threshold [FU] : 10

Overall Results for sample 3 : P-PhT-1 sRNA Lib

Number of peaks found: 3 Corr. Area 1: 752.0
 Noise: 0.2

Peak table for sample 3 : P-PhT-1 sRNA Lib

Peak	Size [bp]	Conc. [pg/μl]	Molarity [pmol/l]	Observations
1	35	125.00	5,411.3	Lower Marker
2	169	1,313.90	11,802.8	
3	256	331.22	1,958.9	
4	260	266.17	1,553.4	
5	10,380	75.00	10.9	Upper Marker

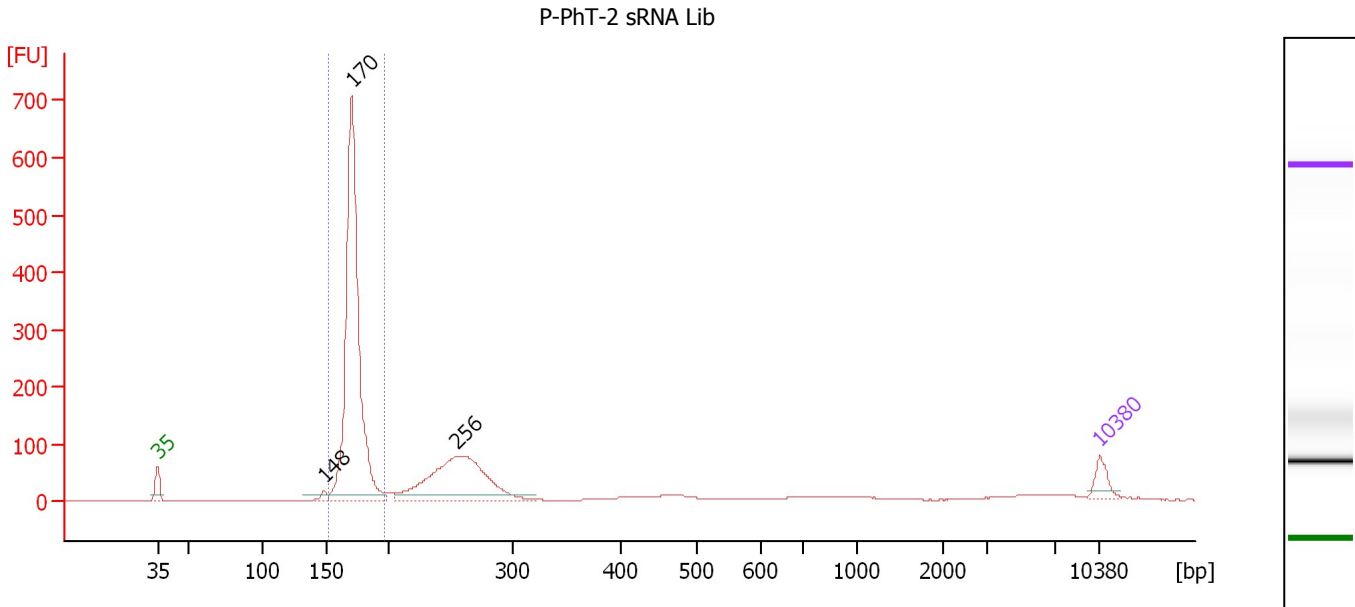
Region table for sample 3 : P-PhT-1 sRNA Lib

From [bp]	To [bp]	Average Size [bp]	Molarity [pmol/l]	Conc. [pg/μl]	Corr. Area	% of Total	Size distribution in CV [%]	Color
149	197	171	11,483.5	1,294.89	752.0	58	4.0	Blue

Assay Class: High Sensitivity DNA Assay
 Data Path: C:\...ttings\Bioanalyzer\2013-08-28\2013-08-28_005_sRNA_Lib-2.xad

Created: 8/28/2013 3:30:31 PM
 Modified: 8/28/2013 4:19:09 PM

Electropherogram Summary Continued ...



Setpoint Deviations for sample 4 : P-PhT-2 sRNA Lib

Height Threshold [FU] : 10

Overall Results for sample 4 : P-PhT-2 sRNA Lib

Number of peaks found: 3 Corr. Area 1: 1,367.1
 Noise: 0.2

Peak table for sample 4 : P-PhT-2 sRNA Lib

Peak	Size [bp]	Conc. [pg/μl]	Molarity [pmol/l]	Observations
1	35	125.00	5,411.3	Lower Marker
2	148	45.18	462.2	
3	170	2,663.13	23,705.2	
4	256	1,050.35	6,227.2	
5	10,380	75.00	10.9	Upper Marker

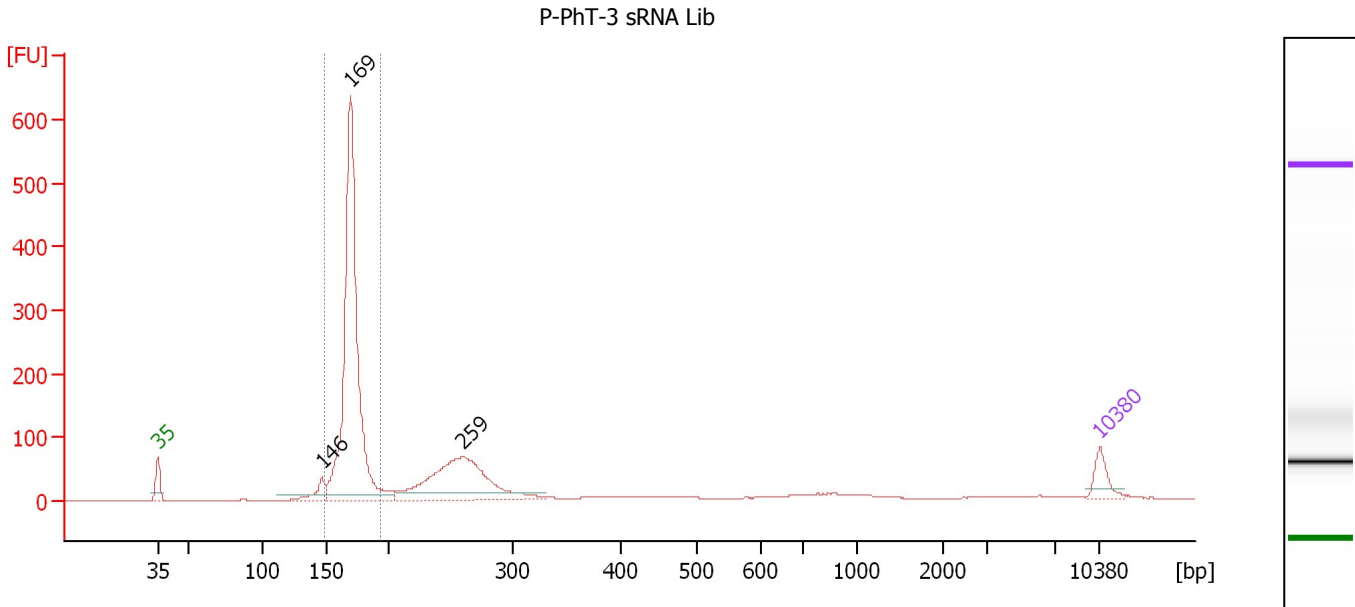
Region table for sample 4 : P-PhT-2 sRNA Lib

From [bp]	To [bp]	Average Size [bp]	Molarity [pmol/l]	Conc. [pg/μl]	Corr. Area	% of Total	Size distribution in CV [%]	Color
153	197	172	23,345.3	2,644.60	1,367.1	61	3.7	Blue

Assay Class: High Sensitivity DNA Assay
 Data Path: C:\...ttings\Bioanalyzer\2013-08-28\2013-08-28_005_sRNA_Lib-2.xad

Created: 8/28/2013 3:30:31 PM
 Modified: 8/28/2013 4:19:09 PM

Electropherogram Summary Continued ...



Setpoint Deviations for sample 5 : P-PhT-3 sRNA Lib

Height Threshold [FU] : 10

Overall Results for sample 5 : P-PhT-3 sRNA Lib

Number of peaks found: 3 Corr. Area 1: 1,219.3
 Noise: 0.1

Peak table for sample 5 : P-PhT-3 sRNA Lib

Peak	Size [bp]	Conc. [pg/μl]	Molarity [pmol/l]	Observations
1	35	125.00	5,411.3	Lower Marker
2	146	112.79	1,167.8	
3	169	2,172.57	19,444.3	
4	259	798.32	4,668.0	
5	10,380	75.00	10.9	Upper Marker

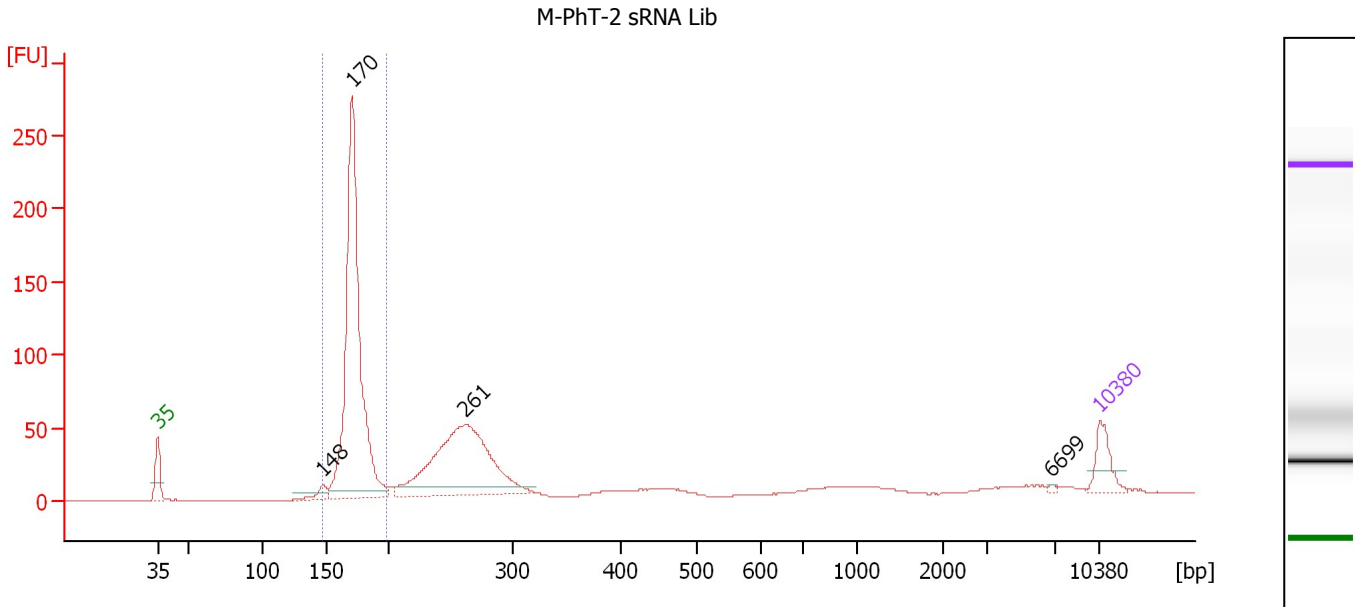
Region table for sample 5 : P-PhT-3 sRNA Lib

From [bp]	To [bp]	Average Size [bp]	Molarity [pmol/l]	Conc. [pg/μl]	Corr. Area	% of Total	Size distribution in CV [%]	Color
149	194	170	19,130.5	2,145.14	1,219.3	57	4.1	Blue

Assay Class: High Sensitivity DNA Assay
 Data Path: C:\...ttings\Bioanalyzer\2013-08-28\2013-08-28_005_sRNA_Lib-2.xad

Created: 8/28/2013 3:30:31 PM
 Modified: 8/28/2013 4:19:09 PM

Electropherogram Summary Continued ...



Overall Results for sample 6 : M-PhT-2 sRNA Lib

Number of peaks found: 4 Corr. Area 1: 572.4
 Noise: 0.2

Peak table for sample 6 : M-PhT-2 sRNA Lib

Peak	Size [bp]	Conc. [pg/μl]	Molarity [pmol/l]	Observations
1	35	125.00	5,411.3	Lower Marker
2	148	42.34	434.6	
3	170	1,396.52	12,412.2	
4	261	818.02	4,741.4	
5	6,699	5.39	1.2	
6	10,380	75.00	10.9	Upper Marker

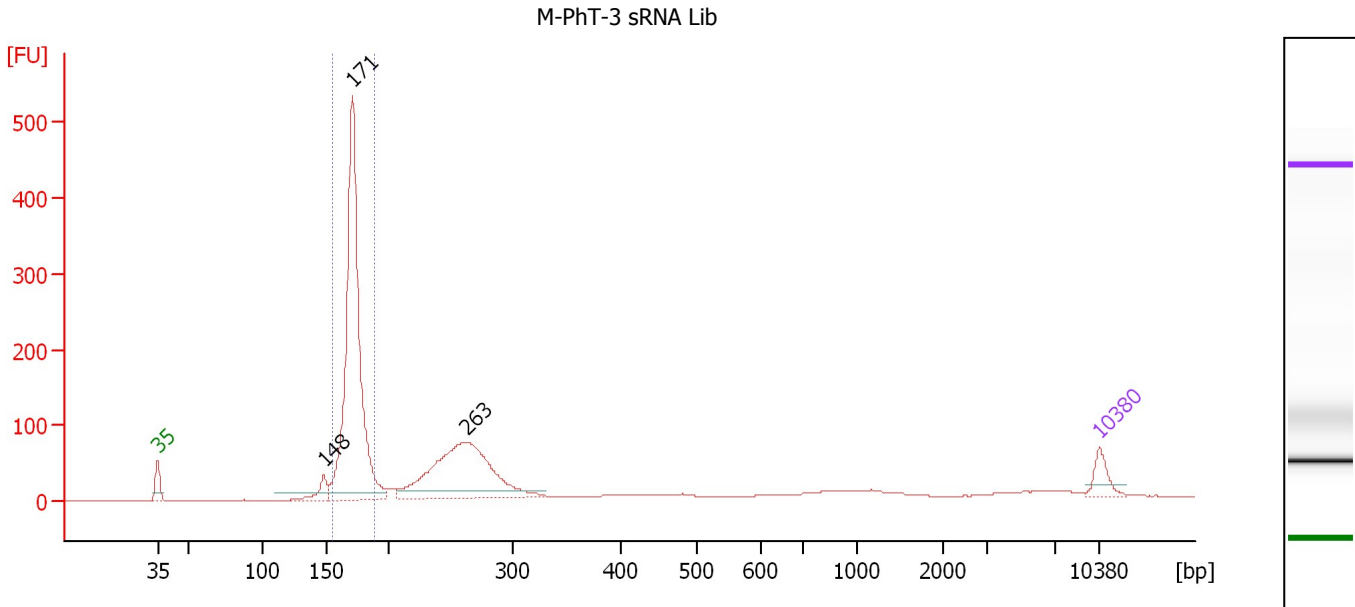
Region table for sample 6 : M-PhT-2 sRNA Lib

From [bp]	To [bp]	Average Size [bp]	Molarity [pmol/l]	Conc. [pg/μl]	Corr. Area	% of Total	Size distribution in CV [%]	Color
147	198	172	12,586.4	1,428.51	572.4	45	4.6	Blue

Assay Class: High Sensitivity DNA Assay
 Data Path: C:\...ttings\Bioanalyzer\2013-08-28\2013-08-28_005_sRNA_Lib-2.xad

Created: 8/28/2013 3:30:31 PM
 Modified: 8/28/2013 4:19:09 PM

Electropherogram Summary Continued ...



Setpoint Deviations for sample 7 : M-PhT-3 sRNA Lib

Height Threshold [FU] : 10

Overall Results for sample 7 : M-PhT-3 sRNA Lib

Number of peaks found: 3 Corr. Area 1: 992.9
 Noise: 0.2

Peak table for sample 7 : M-PhT-3 sRNA Lib

Peak	Size [bp]	Conc. [pg/μl]	Molarity [pmol/l]	Observations
1	35	125.00	5,411.3	Lower Marker
2	148	108.82	1,112.2	
3	171	2,173.09	19,258.9	
4	263	1,079.97	6,224.2	
5	10,380	75.00	10.9	Upper Marker

Region table for sample 7 : M-PhT-3 sRNA Lib

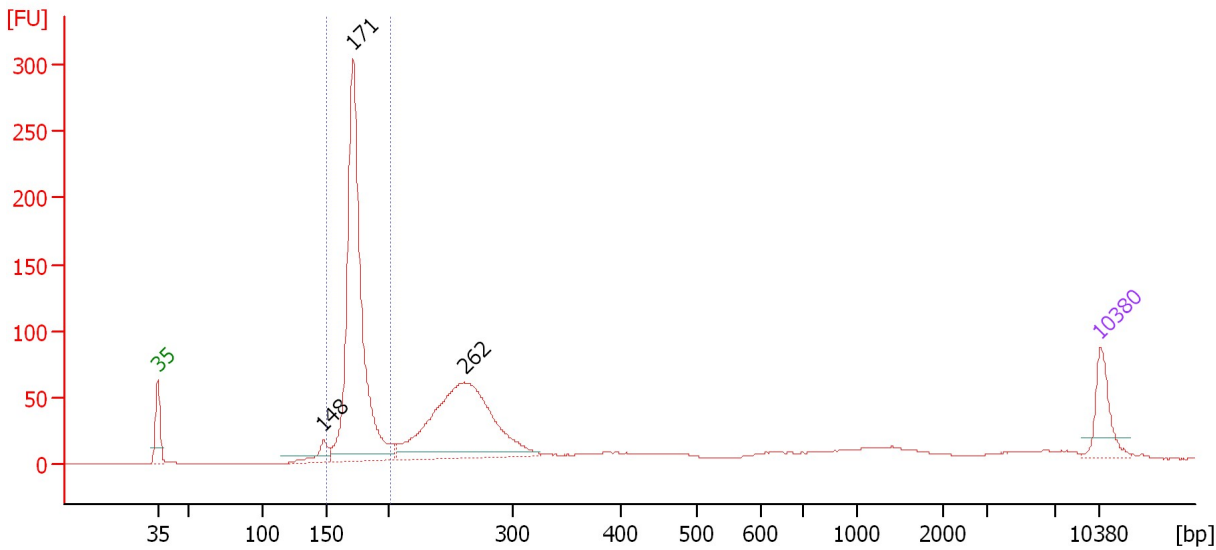
From [bp]	To [bp]	Average Size [bp]	Molarity [pmol/l]	Conc. [pg/μl]	Corr. Area	% of Total	Size distribution in CV [%]	Color
155	189	171	18,602.0	2,104.59	992.9	48	3.5	Blue

Assay Class: High Sensitivity DNA Assay
 Data Path: C:\...ttings\Bioanalyzer\2013-08-28\2013-08-28_005_sRNA_Lib-2.xad

Created: 8/28/2013 3:30:31 PM
 Modified: 8/28/2013 4:19:09 PM

Electropherogram Summary Continued ...

P-PhB-1 sRNA Lib 1:2



Overall Results for sample 8 : P-PhB-1 sRNA Lib 1:2

Number of peaks found: 3 Corr. Area 1: 655.1
 Noise: 0.1

Peak table for sample 8 : P-PhB-1 sRNA Lib 1:2

Peak	Size [bp]	Conc. [pg/μl]	Molarity [pmol/l]	Observations
1	35	125.00	5,411.3	Lower Marker
2	148	53.45	547.9	
3	171	1,054.57	9,325.4	
4	262	668.19	3,867.6	
5	10,380	75.00	10.9	Upper Marker

Region table for sample 8 : P-PhB-1 sRNA Lib 1:2

From [bp]	To [bp]	Average Size [bp]	Molarity [pmol/l]	Conc. [pg/μl]	Corr. Area	% of Total	Size distribution in CV [%]	Color
150	201	174	9,351.2	1,070.96	655.1	41	4.8	Blue