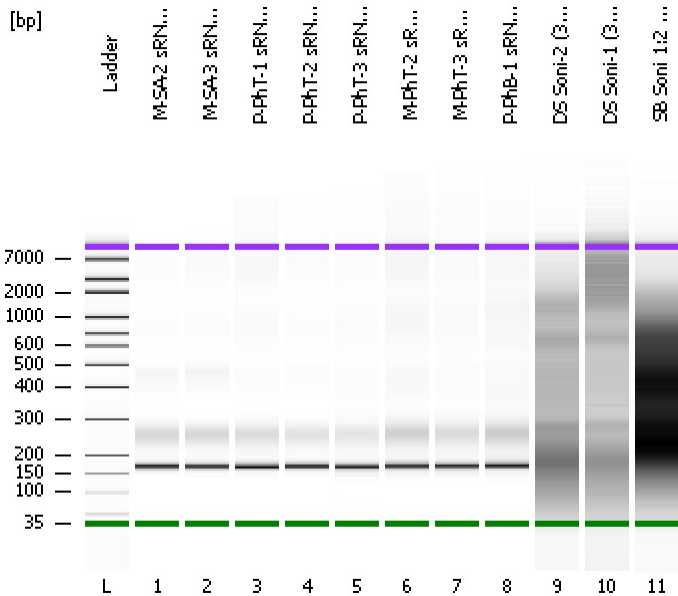


Assay Class: High Sensitivity DNA Assay  
Data Path: C:\...ents and Settings\Bioanalyzer\2013-08-28\2013-08-28\_005.xad

Created: 8/28/2013 3:30:31 PM  
Modified: 8/28/2013 4:17:51 PM

Electrophoresis File Run Summary



Instrument Information:

Instrument Name: DE13701086      Firmware: C.01.069  
Serial#: DE13701086      Type: G2938B

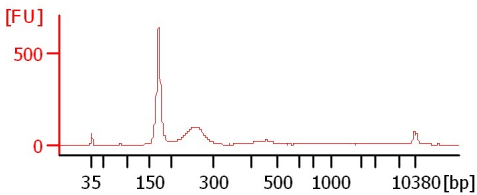
Assay Information:

Assay Origin Path: C:\Program Files\Agilent\2100 bioanalyzer\2100 expert\assays\dsDNA\High Sensitivity DNA.xsy  
Assay Class: High Sensitivity DNA Assay  
Version: 1.03  
Assay Comments: Copyright © 2003-2010 Agilent Technologies

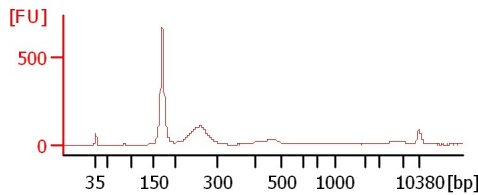
Chip Information:

Chip Lot #:   
Reagent Kit Lot #:   
Chip Comments:

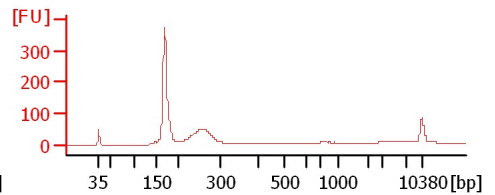
M-SA-2 sRNA Lib



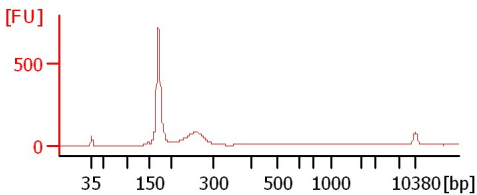
M-SA-3 sRNA Lib



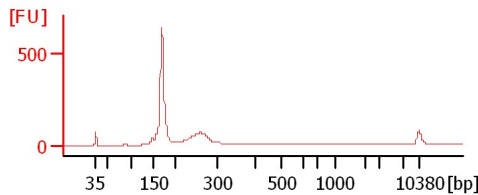
P-PhT-1 sRNA Lib



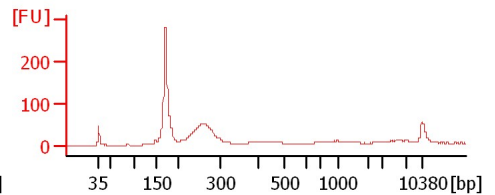
P-PhT-2 sRNA Lib



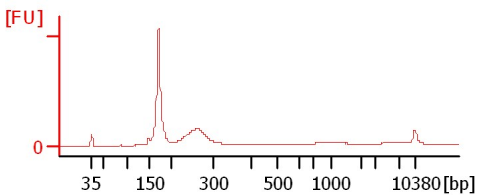
P-PhT-3 sRNA Lib



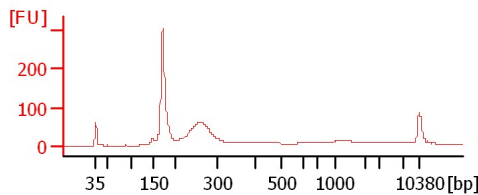
M-PhT-2 sRNA Lib



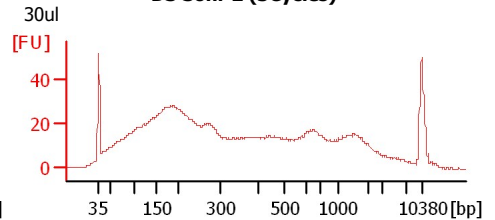
M-PhT-3 sRNA Lib



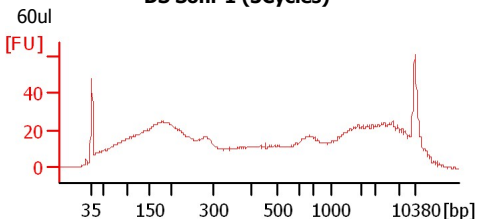
P-PhB-1 sRNA Lib 1:2



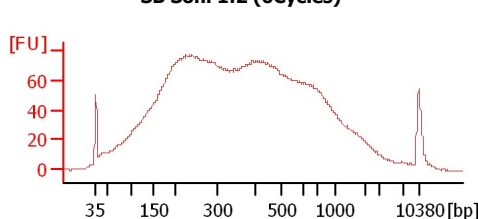
DS Soni-2 (3Cycles)



DS Soni-1 (3Cycles)



SB Soni 1:2 (6Cycles)



Assay Class: High Sensitivity DNA Assay  
Data Path: C:\...ents and Settings\Bioanalyzer\2013-08-28\2013-08-28\_005.xad

Created: 8/28/2013 3:30:31 PM  
Modified: 8/28/2013 4:17:51 PM

**Electrophoresis File Run Summary (Chip Summary)**

Sample Name	Sample Comment	Rest. Digest	Status	Observation	Result Label	Result Color
M-SA-2 sRNA Lib		<input type="checkbox"/>	✓			
M-SA-3 sRNA Lib		<input type="checkbox"/>	✓			
P-PhT-1 sRNA Lib		<input type="checkbox"/>	✓			
P-PhT-2 sRNA Lib		<input type="checkbox"/>	✓			
P-PhT-3 sRNA Lib		<input type="checkbox"/>	✓			
M-PhT-2 sRNA Lib		<input type="checkbox"/>	✓			
M-PhT-3 sRNA Lib		<input type="checkbox"/>	✓			
P-PhB-1 sRNA Lib 1:2		<input type="checkbox"/>	✓			
DS Soni-2 (3Cycles)	30ul	<input type="checkbox"/>	✓			
DS Soni-1 (3Cycles)	60ul	<input type="checkbox"/>	✓			
SB Soni 1:2 (6Cycles)		<input type="checkbox"/>	✓			
Ladder		<input type="checkbox"/>	✓			

**Chip Lot #**

**Reagent Kit Lot #**

**Chip Comments :**

Assay Class: High Sensitivity DNA Assay  
Data Path: C:\...ents and Settings\Bioanalyzer\2013-08-28\2013-08-28\_005.xad

Created: 8/28/2013 3:30:31 PM  
Modified: 8/28/2013 4:17:51 PM

**Electrophoresis Assay Details**

**General Analysis Settings**

Number of Available Sample and Ladder Wells (Max.) : 12  
Minimum Visible Range [s] : 32  
Maximum Visible Range [s] : 138  
Start Analysis Time Range [s] : 33  
End Analysis Time Range [s] : 137.5  
Ladder Concentration [pg/μl] : 1950  
Uses Standard Area for Ladder Fragments  
Lower Marker Concentration [pg/μl] : 125  
Upper Marker Concentration [pg/μl] : 75  
Used Upper Marker for Quantitation  
Standard Curve Fit is Point to Point  
Show Data Aligned to Lower and Upper Marker

**Integrator Settings**

Integration Start Time [s] : 33.05  
Integration End Time [s] : 137  
Slope Threshold : 0.8  
Height Threshold [FU] : 5  
Area Threshold : 0.1  
Width Threshold [s] : 0.6  
Baseline Plateau [s] : 0.5

**Filter Settings**

Filter Width [s] : 0.5  
Polynomial Order : 4

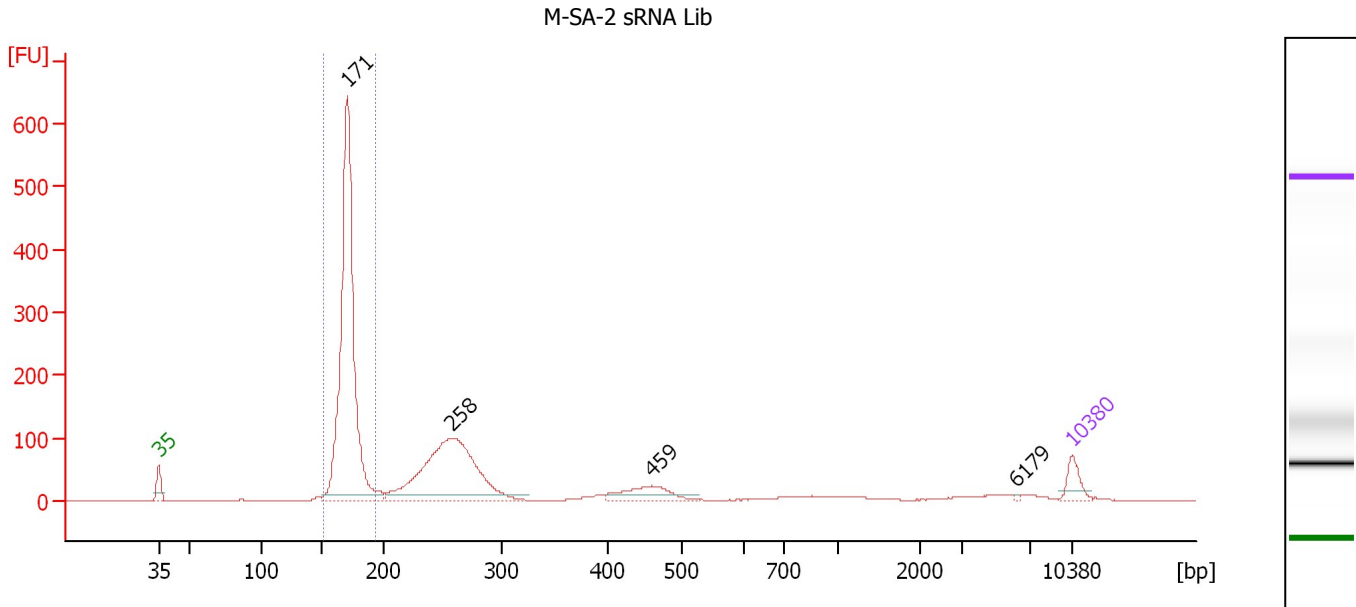
**Ladder**

Ladder Peak	Size	Area
1	35	160
2	50	210
3	100	208
4	150	221
5	200	242
6	300	270
7	400	305
8	500	306
9	600	336
10	700	321
11	1000	366
12	2000	413
13	3000	411
14	7000	400
15	10380	214

Assay Class: High Sensitivity DNA Assay  
 Data Path: C:\...ents and Settings\Bioanalyzer\2013-08-28\2013-08-28\_005.xad

Created: 8/28/2013 3:30:31 PM  
 Modified: 8/28/2013 4:17:51 PM

**Electropherogram Summary**



**Setpoint Deviations for sample 1 : M-SA-2 sRNA Lib**

Height Threshold [FU] : 10

**Overall Results for sample 1 : M-SA-2 sRNA Lib**

Number of peaks found: 4                      Corr. Area 1: 1,293.1  
 Noise: 0.2

**Peak table for sample 1 : M-SA-2 sRNA Lib**

Peak	Size [bp]	Conc. [pg/μl]	Molarity [pmol/l]	Observations
1	35	125.00	5,411.3	Lower Marker
2	171	2,543.18	22,592.0	
3	258	1,315.19	7,726.9	
4	459	177.10	584.9	
5	6,179	5.74	1.4	
6	10,380	75.00	10.9	Upper Marker

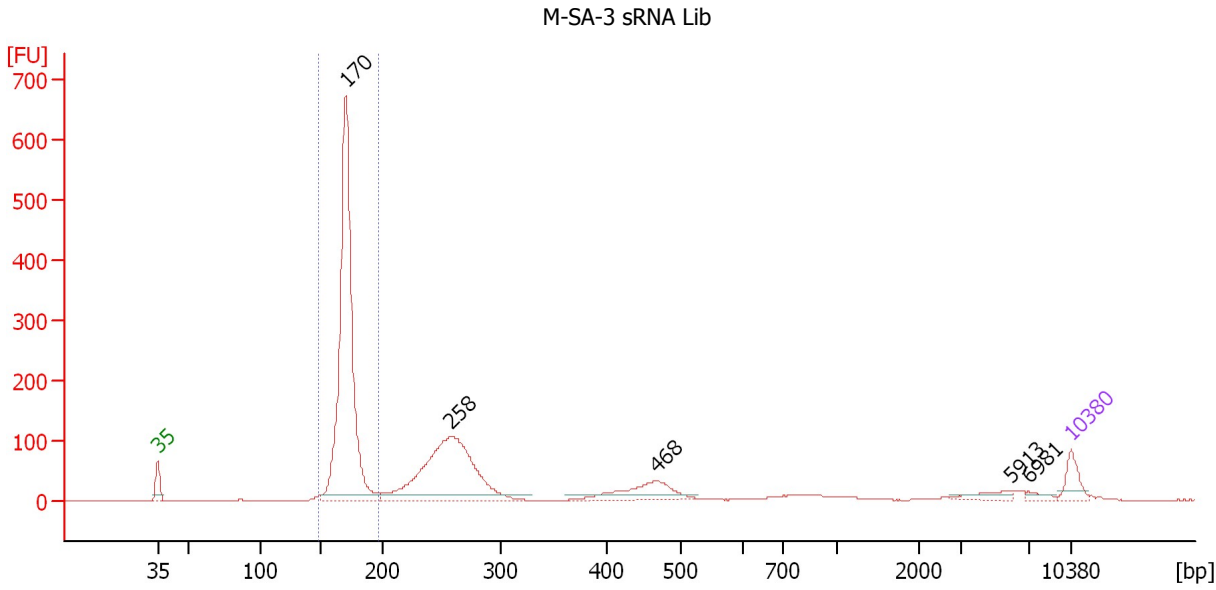
**Region table for sample 1 : M-SA-2 sRNA Lib**

From [bp]	To [bp]	Average Size [bp]	Molarity [pmol/l]	Conc. [pg/μl]	Corr. Area	% of Total	Size distribution in CV [%]	Color
152	194	171	22,151.2	2,501.15	1,293.1	54	3.7	Blue

Assay Class: High Sensitivity DNA Assay  
 Data Path: C:\...ents and Settings\Bioanalyzer\2013-08-28\2013-08-28\_005.xad

Created: 8/28/2013 3:30:31 PM  
 Modified: 8/28/2013 4:17:51 PM

**Electropherogram Summary Continued ...**



**Setpoint Deviations for sample 2 : M-SA-3 sRNA Lib**

Height Threshold [FU] : 10

**Overall Results for sample 2 : M-SA-3 sRNA Lib**

Number of peaks found: 5                      Corr. Area 1: 1,279.9  
 Noise: 0.2

**Peak table for sample 2 : M-SA-3 sRNA Lib**

Peak	Size [bp]	Conc. [pg/μl]	Molarity [pmol/l]	Observations
1	35	125.00	5,411.3	Lower Marker
2	170	2,210.02	19,660.8	
3	258	1,190.47	6,982.9	
4	468	229.69	743.0	
5	5,913	46.26	11.9	
6	6,981	20.58	4.5	
7	10,380	75.00	10.9	Upper Marker

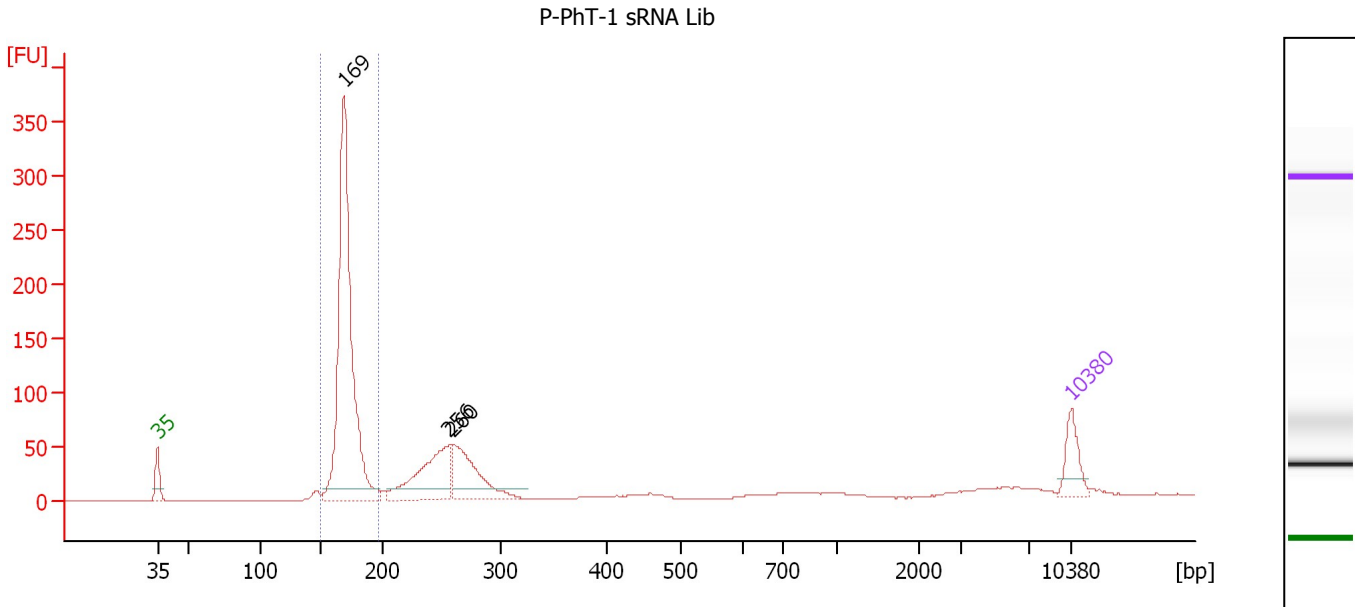
**Region table for sample 2 : M-SA-3 sRNA Lib**

From [bp]	To [bp]	Average Size [bp]	Molarity [pmol/l]	Conc. [pg/μl]	Corr. Area	% of Total	Size distribution in CV [%]	Color
147	197	171	19,572.4	2,205.72	1,279.9	53	3.8	Blue

Assay Class: High Sensitivity DNA Assay  
 Data Path: C:\...ents and Settings\Bioanalyzer\2013-08-28\2013-08-28\_005.xad

Created: 8/28/2013 3:30:31 PM  
 Modified: 8/28/2013 4:17:51 PM

**Electropherogram Summary Continued ...**



**Setpoint Deviations for sample 3 : P-PhT-1 sRNA Lib**

Height Threshold [FU] : 10

**Overall Results for sample 3 : P-PhT-1 sRNA Lib**

Number of peaks found: 3                      Corr. Area 1: 752.0  
 Noise: 0.2

**Peak table for sample 3 : P-PhT-1 sRNA Lib**

Peak	Size [bp]	Conc. [pg/μl]	Molarity [pmol/l]	Observations
1	35	125.00	5,411.3	Lower Marker
2	169	1,313.90	11,802.8	
3	256	331.22	1,958.9	
4	260	266.17	1,553.4	
5	10,380	75.00	10.9	Upper Marker

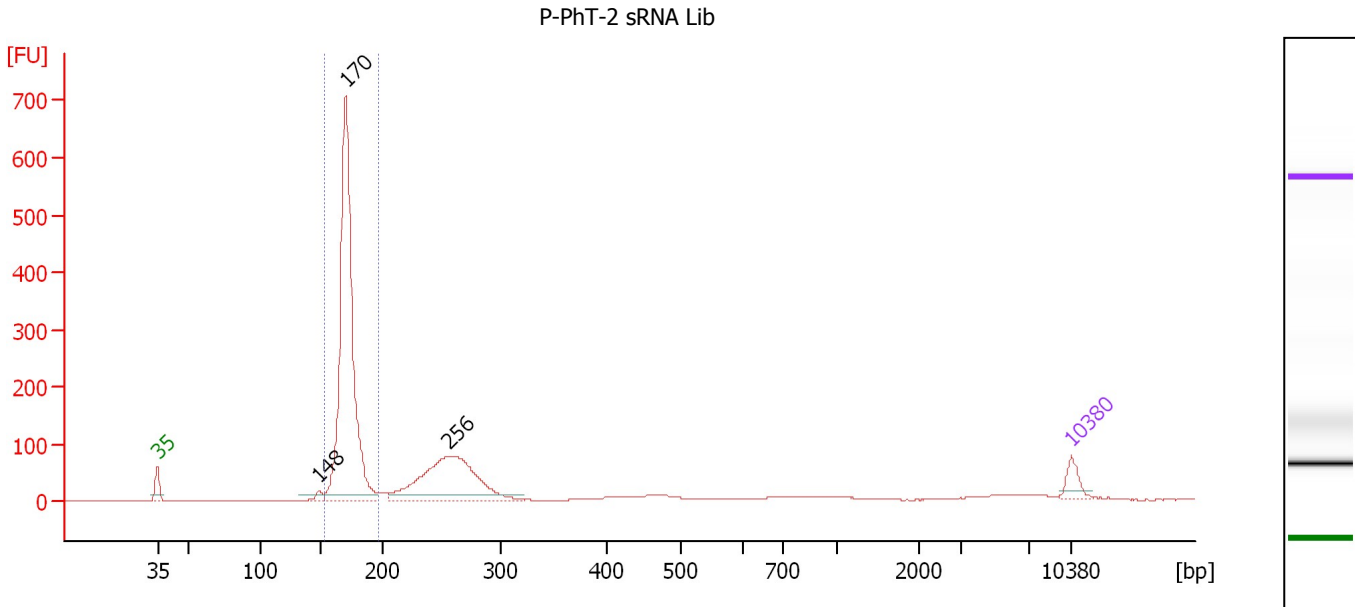
**Region table for sample 3 : P-PhT-1 sRNA Lib**

From [bp]	To [bp]	Average Size [bp]	Molarity [pmol/l]	Conc. [pg/μl]	Corr. Area	% of Total	Size distribution in CV [%]	Color
149	197	171	11,483.5	1,294.89	752.0	58	4.0	Blue

Assay Class: High Sensitivity DNA Assay  
 Data Path: C:\...ents and Settings\Bioanalyzer\2013-08-28\2013-08-28\_005.xad

Created: 8/28/2013 3:30:31 PM  
 Modified: 8/28/2013 4:17:51 PM

**Electropherogram Summary Continued ...**



**Setpoint Deviations for sample 4 : P-PhT-2 sRNA Lib**

Height Threshold [FU] : 10

**Overall Results for sample 4 : P-PhT-2 sRNA Lib**

Number of peaks found: 3                      Corr. Area 1: 1,367.1  
 Noise: 0.2

**Peak table for sample 4 : P-PhT-2 sRNA Lib**

Peak	Size [bp]	Conc. [pg/µl]	Molarity [pmol/l]	Observations
1	35	125.00	5,411.3	Lower Marker
2	148	45.18	462.2	
3	170	2,663.13	23,705.2	
4	256	1,050.35	6,227.2	
5	10,380	75.00	10.9	Upper Marker

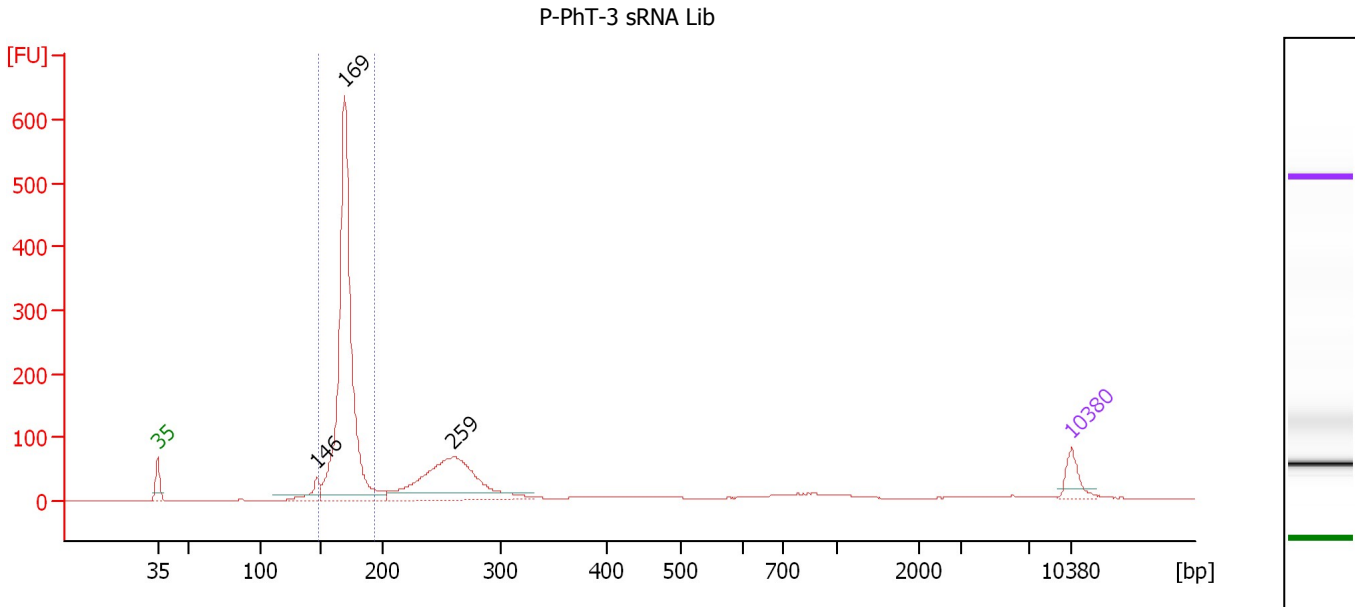
**Region table for sample 4 : P-PhT-2 sRNA Lib**

From [bp]	To [bp]	Average Size [bp]	Molarity [pmol/l]	Conc. [pg/µl]	Corr. Area	% of Total	Size distribution in CV [%]	Color
153	197	172	23,345.3	2,644.60	1,367.1	61	3.7	Blue

Assay Class: High Sensitivity DNA Assay  
 Data Path: C:\...ents and Settings\Bioanalyzer\2013-08-28\2013-08-28\_005.xad

Created: 8/28/2013 3:30:31 PM  
 Modified: 8/28/2013 4:17:51 PM

**Electropherogram Summary Continued ...**



**Setpoint Deviations for sample 5 : P-PhT-3 sRNA Lib**

Height Threshold [FU] : 10

**Overall Results for sample 5 : P-PhT-3 sRNA Lib**

Number of peaks found: 3                      Corr. Area 1: 1,219.3  
 Noise: 0.1

**Peak table for sample 5 : P-PhT-3 sRNA Lib**

Peak	Size [bp]	Conc. [pg/μl]	Molarity [pmol/l]	Observations
1	35	125.00	5,411.3	Lower Marker
2	146	112.79	1,167.8	
3	169	2,172.57	19,444.3	
4	259	798.32	4,668.0	
5	10,380	75.00	10.9	Upper Marker

**Region table for sample 5 : P-PhT-3 sRNA Lib**

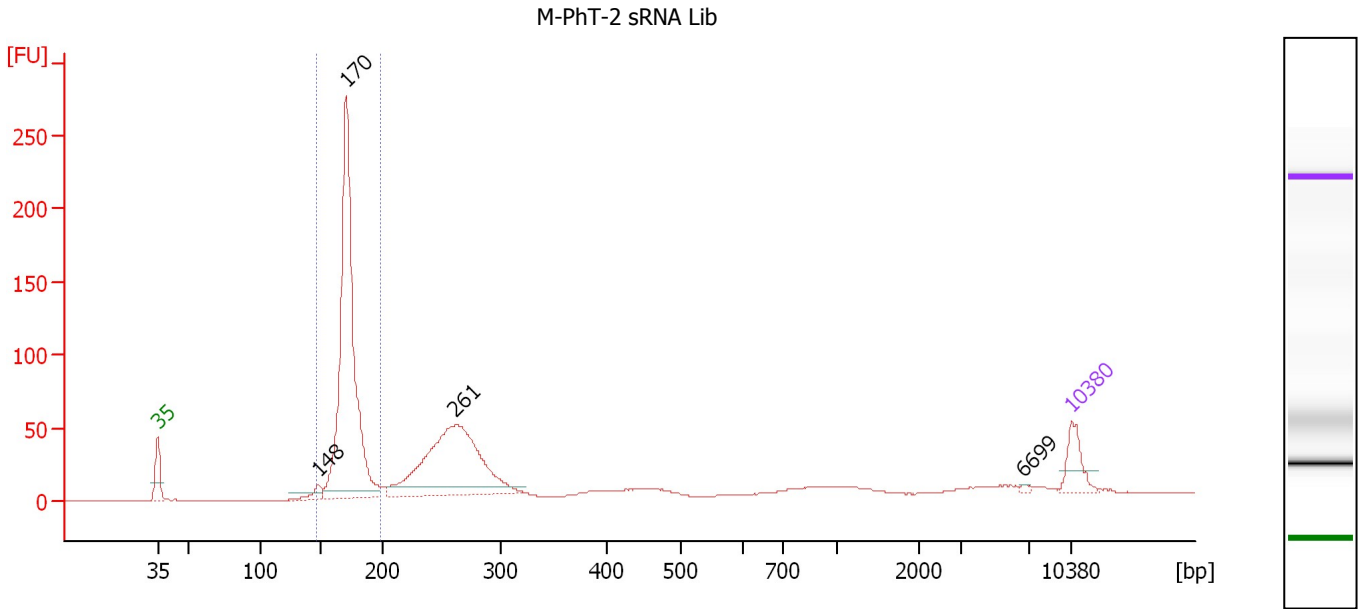
From [bp]	To [bp]	Average Size [bp]	Molarity [pmol/l]	Conc. [pg/μl]	Corr. Area	% of Total	Size distribution in CV [%]	Color
149	194	170	19,130.5	2,145.14	1,219.3	57	4.1	Blue



Assay Class: High Sensitivity DNA Assay  
 Data Path: C:\...ents and Settings\Bioanalyzer\2013-08-28\2013-08-28\_005.xad

Created: 8/28/2013 3:30:31 PM  
 Modified: 8/28/2013 4:17:51 PM

**Electropherogram Summary Continued ...**



**Overall Results for sample 6 : M-PhT-2 sRNA Lib**

Number of peaks found: 4                      Corr. Area 1: 572.4  
 Noise: 0.2

**Peak table for sample 6 : M-PhT-2 sRNA Lib**

Peak	Size [bp]	Conc. [pg/μl]	Molarity [pmol/l]	Observations
1	35	125.00	5,411.3	Lower Marker
2	148	42.34	434.6	
3	170	1,396.52	12,412.2	
4	261	818.02	4,741.4	
5	6,699	5.39	1.2	
6	10,380	75.00	10.9	Upper Marker

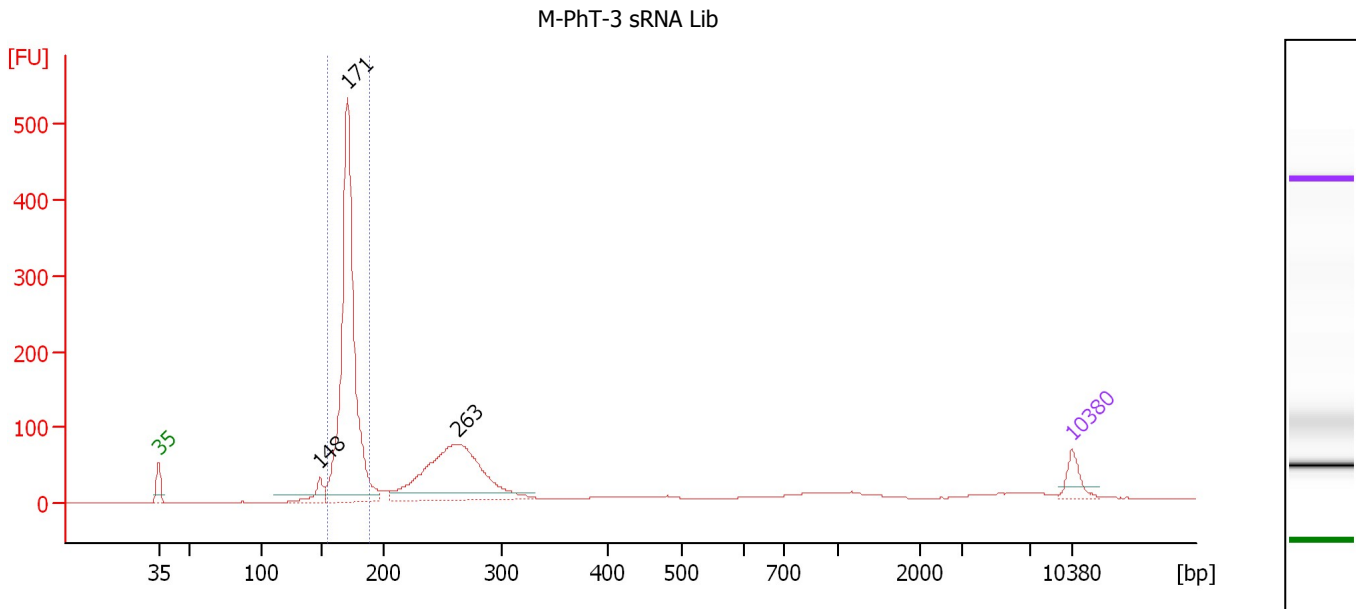
**Region table for sample 6 : M-PhT-2 sRNA Lib**

From [bp]	To [bp]	Average Size [bp]	Molarity [pmol/l]	Conc. [pg/μl]	Corr. Area	% of Total	Size distribution in CV [%]	Color
147	198	172	12,586.4	1,428.51	572.4	45	4.6	Blue

Assay Class: High Sensitivity DNA Assay  
 Data Path: C:\...ents and Settings\Bioanalyzer\2013-08-28\2013-08-28\_005.xad

Created: 8/28/2013 3:30:31 PM  
 Modified: 8/28/2013 4:17:51 PM

**Electropherogram Summary Continued ...**



**Setpoint Deviations for sample 7 : M-PhT-3 sRNA Lib**

Height Threshold [FU] : 10

**Overall Results for sample 7 : M-PhT-3 sRNA Lib**

Number of peaks found: 3                      Corr. Area 1: 992.9  
 Noise: 0.2

**Peak table for sample 7 : M-PhT-3 sRNA Lib**

Peak	Size [bp]	Conc. [pg/µl]	Molarity [pmol/l]	Observations
1	35	125.00	5,411.3	Lower Marker
2	148	108.82	1,112.2	
3	171	2,173.09	19,258.9	
4	263	1,079.97	6,224.2	
5	10,380	75.00	10.9	Upper Marker

**Region table for sample 7 : M-PhT-3 sRNA Lib**

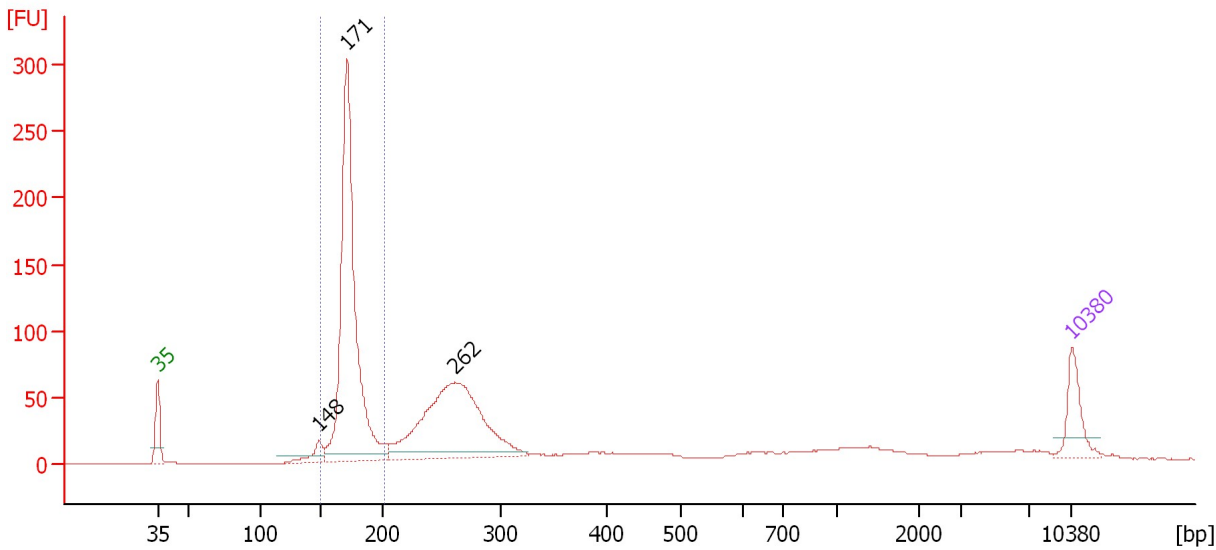
From [bp]	To [bp]	Average Size [bp]	Molarity [pmol/l]	Conc. [pg/µl]	Corr. Area	% of Total	Size distribution in CV [%]	Color
155	189	171	18,602.0	2,104.59	992.9	48	3.5	Blue

Assay Class: High Sensitivity DNA Assay  
 Data Path: C:\...ents and Settings\Bioanalyzer\2013-08-28\2013-08-28\_005.xad

Created: 8/28/2013 3:30:31 PM  
 Modified: 8/28/2013 4:17:51 PM

**Electropherogram Summary Continued ...**

P-PhB-1 sRNA Lib 1:2



**Overall Results for sample 8 : P-PhB-1 sRNA Lib 1:2**

Number of peaks found: 3                      Corr. Area 1: 655.1  
 Noise: 0.1

**Peak table for sample 8 : P-PhB-1 sRNA Lib 1:2**

Peak	Size [bp]	Conc. [pg/μl]	Molarity [pmol/l]	Observations
1	35	125.00	5,411.3	Lower Marker
2	148	53.45	547.9	
3	171	1,054.57	9,325.4	
4	262	668.19	3,867.6	
5	10,380	75.00	10.9	Upper Marker

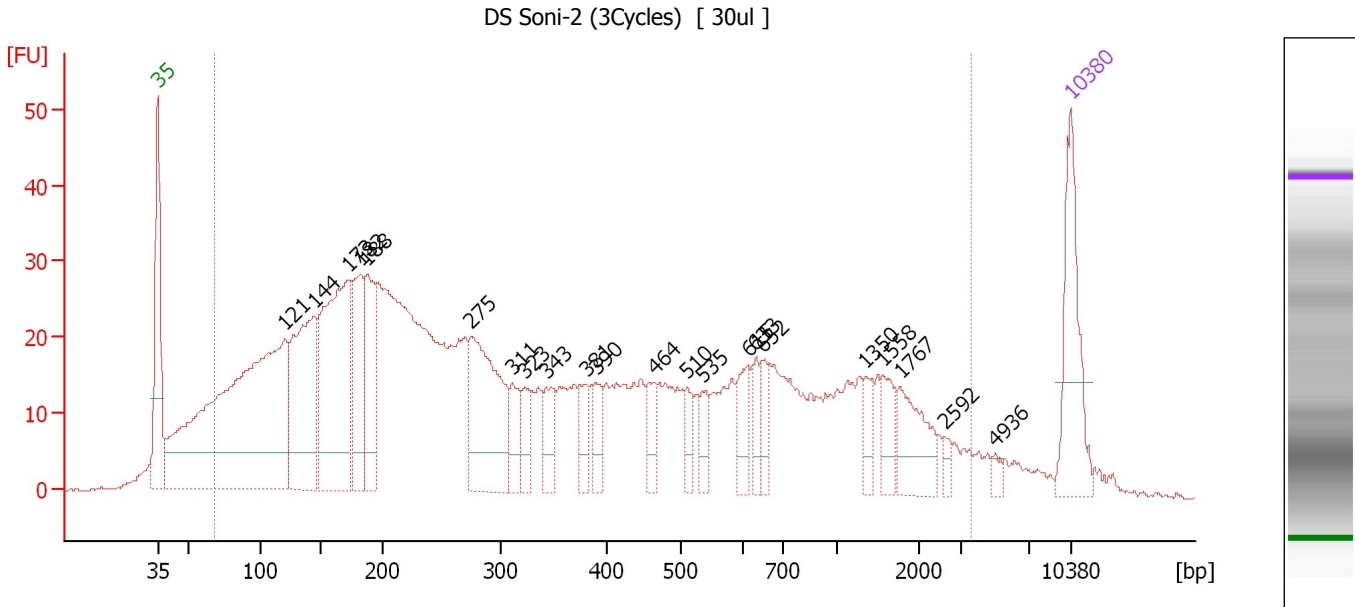
**Region table for sample 8 : P-PhB-1 sRNA Lib 1:2**

From [bp]	To [bp]	Average Size [bp]	Molarity [pmol/l]	Conc. [pg/μl]	Corr. Area	% of Total	Size distribution in CV [%]	Color
150	201	174	9,351.2	1,070.96	655.1	41	4.8	Blue

Assay Class: High Sensitivity DNA Assay  
 Data Path: C:\...ents and Settings\Bioanalyzer\2013-08-28\2013-08-28\_005.xad

Created: 8/28/2013 3:30:31 PM  
 Modified: 8/28/2013 4:17:51 PM

**Electropherogram Summary Continued ...**



**Overall Results for sample 9 : DS Soni-2 (3Cycles)**

Number of peaks found: 22                      Corr. Area 1: 1,352.5  
 Noise: 0.2

**Peak table for sample 9 : DS Soni-2 (3Cycles)**

Peak	Size [bp]	Conc. [pg/μl]	Molarity [pmol/l]	Observations
1	35	125.00	5,411.3	Lower Marker
2	121	628.83	7,870.8	
3	144	207.70	2,184.9	
4	173	272.93	2,390.9	
5	182	97.09	806.3	
6	188	100.22	808.9	
7	275	166.94	920.2	
8	311	34.14	166.5	
9	323	30.59	143.6	
10	343	35.00	154.6	
11	381	26.32	104.8	
12	390	25.96	100.9	
13	464	26.18	85.5	
14	510	20.51	61.0	
15	535	22.15	62.8	
16	615	32.00	78.8	
17	633	21.57	51.7	
18	652	23.36	54.3	
19	1,350	17.43	19.6	
20	1,558	25.15	24.5	
21	1,767	47.03	40.3	
22	2,592	6.42	3.8	
23	4,936	5.57	1.7	
24	10,380	75.00	10.9	Upper Marker

Assay Class: High Sensitivity DNA Assay  
Data Path: C:\...ents and Settings\Bioanalyzer\2013-08-28\2013-08-28\_005.xad

Created: 8/28/2013 3:30:31 PM  
Modified: 8/28/2013 4:17:51 PM

**Electropherogram Summary Continued ...****... Region table for sample 9 : DS Soni-2 (3Cycles)**

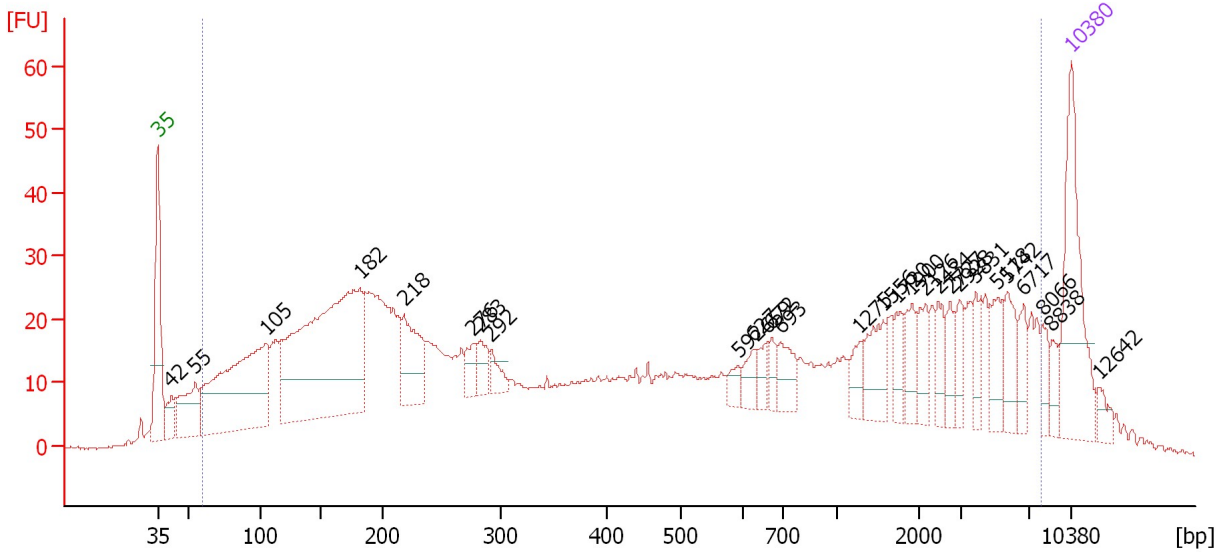
<b>From [bp]</b>	<b>To [bp]</b>	<b>Average Size [bp]</b>	<b>Molarity [pmol/l]</b>	<b>Conc. [pg/μl]</b>	<b>Corr. Area</b>	<b>% of Total</b>	<b>Size distribution in CV [%]</b>	<b>Color</b>
69	3,518	513	22,083.9	2,930.88	1,352.5	92	100.0	■

Assay Class: High Sensitivity DNA Assay  
 Data Path: C:\...ents and Settings\Bioanalyzer\2013-08-28\2013-08-28\_005.xad

Created: 8/28/2013 3:30:31 PM  
 Modified: 8/28/2013 4:17:51 PM

**Electropherogram Summary Continued ...**

DS Soni-1 (3Cycles) [ 60ul ]



**Overall Results for sample 10 : DS Soni-1 (3Cycles)**

Number of peaks found: 28                      Corr. Area 1: 1,454.2  
 Noise: 0.2

**Peak table for sample 10 : DS Soni-1 (3Cycles)**

Peak	Size [bp]	Conc. [pg/μl]	Molarity [pmol/l]	Observations
1	35	125.00	5,411.3	Lower Marker
2	42	21.92	794.8	
3	55	57.69	1,582.7	
4	105	220.99	3,178.9	
5	182	332.31	2,771.3	
6	218	62.33	432.5	
7	276	17.22	94.5	
8	283	18.19	97.5	
9	292	13.31	69.1	
10	592	9.23	23.6	
11	627	13.21	31.9	
12	659	11.89	27.3	
13	672	10.58	23.9	
14	693	23.58	51.6	
15	1,275	14.45	17.2	
16	1,556	28.18	27.4	
17	1,720	14.12	12.4	
18	1,900	18.14	14.5	
19	2,126	18.05	12.9	
20	2,434	16.35	10.2	
21	2,727	12.42	6.9	
22	2,928	12.87	6.7	
23	3,831	13.66	5.4	
24	5,118	20.78	6.2	
25	5,742	22.60	6.0	
26	6,717	15.03	3.4	

Assay Class: High Sensitivity DNA Assay  
 Data Path: C:\...ents and Settings\Bioanalyzer\2013-08-28\2013-08-28\_005.xad


Created: 8/28/2013 3:30:31 PM  
 Modified: 8/28/2013 4:17:51 PM

### Electropherogram Summary Continued ...

#### ... Peak table for sample 10 : DS Soni-1 (3Cycles)

Peak	Size [bp]	Conc. [pg/μl]	Molarity [pmol/l]	Observations
27	8,066	11.20	2.1	
28	8,838	9.20	1.6	
29	10,380	75.00	10.9	Upper Marker
30	12,642	0.00	0.0	

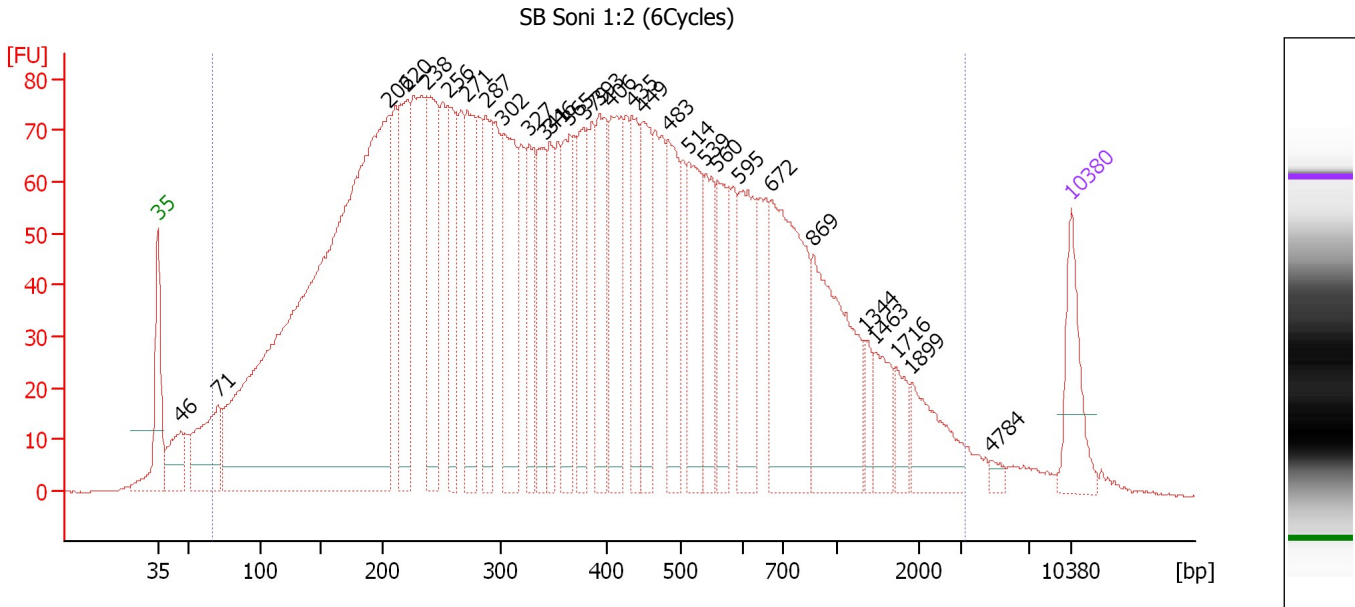
#### Region table for sample 10 : DS Soni-1 (3Cycles)

From [bp]	To [bp]	Average Size [bp]	Molarity [pmol/l]	Conc. [pg/μl]	Corr. Area	% of Total	Size distribution in CV [%]	Color
60	7,978	1,284	16,445.9	2,323.32	1,454.2	92	100.0	

Assay Class: High Sensitivity DNA Assay  
 Data Path: C:\...ents and Settings\Bioanalyzer\2013-08-28\2013-08-28\_005.xad

Created: 8/28/2013 3:30:31 PM  
 Modified: 8/28/2013 4:17:51 PM

**Electropherogram Summary Continued ...**



**Overall Results for sample 11 : SB Soni 1:2 (6Cycles)**

Number of peaks found: 30                      Corr. Area 1: 4,138.0  
 Noise: 0.3

**Peak table for sample 11 : SB Soni 1:2 (6Cycles)**

Peak	Size [bp]	Conc. [pg/μl]	Molarity [pmol/l]	Observations
1	35	125.00	5,411.3	Lower Marker
2	46	84.93	2,770.5	
3	71	168.65	3,591.1	
4	206	1,881.11	13,828.1	
5	220	205.72	1,413.7	
6	238	235.14	1,495.8	
7	256	150.35	890.3	
8	271	208.71	1,165.3	
9	287	167.27	881.8	
10	302	219.69	1,102.2	
11	327	122.89	569.4	
12	341	110.34	490.6	
13	346	109.54	479.2	
14	365	140.34	582.4	
15	379	123.07	492.2	
16	393	148.16	571.8	
17	406	169.60	632.5	
18	435	117.81	410.8	
19	449	145.32	490.8	
20	483	139.89	438.8	
21	514	153.49	452.8	
22	539	107.20	301.2	
23	560	113.21	306.5	
24	595	146.00	371.8	
25	672	290.03	653.8	
26	869	238.59	415.9	



Assay Class: High Sensitivity DNA Assay  
 Data Path: C:\...ents and Settings\Bioanalyzer\2013-08-28\2013-08-28\_005.xad

Created: 8/28/2013 3:30:31 PM  
 Modified: 8/28/2013 4:17:51 PM

### Electropherogram Summary Continued ...

#### ... Peak table for sample 11 : SB Soni 1:2 (6Cycles)

Peak	Size [bp]	Conc. [pg/μl]	Molarity [pmol/l]	Observations
27	1,344	26.62	30.0	
28	1,463	50.88	52.7	
29	1,716	31.80	28.1	
30	1,899	78.30	62.5	
31	4,784	8.25	2.6	
32	10,380	75.00	10.9	Upper Marker

#### Region table for sample 11 : SB Soni 1:2 (6Cycles)

From [bp]	To [bp]	Average Size [bp]	Molarity [pmol/l]	Conc. [pg/μl]	Corr. Area	% of Total	Size distribution in CV [%]	Color
67	3,228	475	49,240.9	8,043.37	4,138.0	96	87.9	