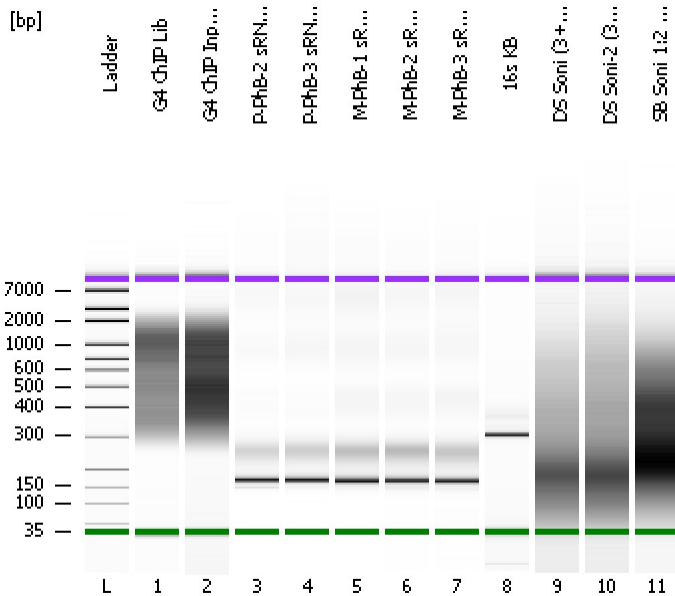


Assay Class: High Sensitivity DNA Assay  
Data Path: C:\...ents and Settings\Bioanalyzer\2013-08-29\2013-08-29\_007.xad

Created: 8/29/2013 5:18:30 PM  
Modified: 8/29/2013 6:01:56 PM

Electrophoresis File Run Summary



Instrument Information:

Instrument Name: DE13701086 Firmware: C.01.069  
Serial#: DE13701086 Type: G2938B

Assay Information:

Assay Origin Path: C:\Program Files\Agilent\2100 bioanalyzer\2100 expert\assays\dsDNA\High Sensitivity DNA.xsy  
Assay Class: High Sensitivity DNA Assay  
Version: 1.03  
Assay Comments: Copyright © 2003-2010 Agilent Technologies

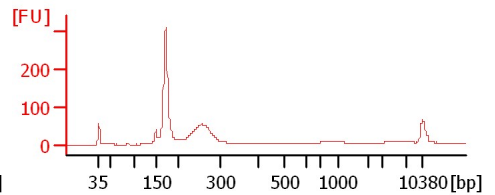
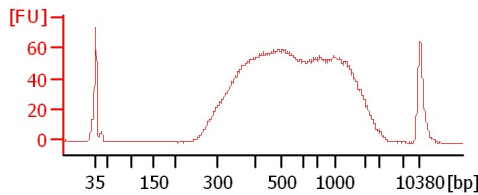
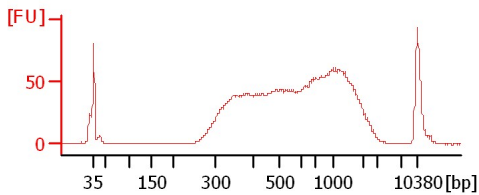
Chip Information:

Chip Lot #:   
Reagent Kit Lot #:   
Chip Comments:

G4 ChIP Lib

G4 ChIP Input Lib 1:2

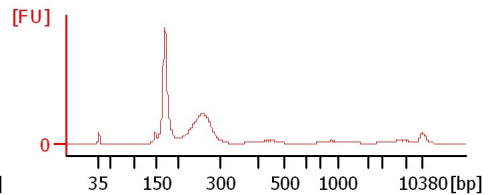
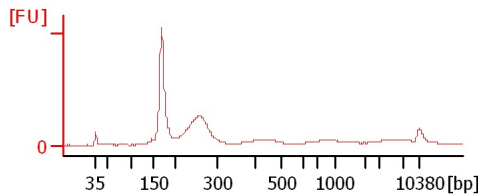
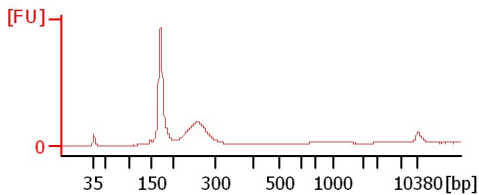
P-PhB-2 sRNA Lib 1:2



P-PhB-3 sRNA Lib

M-PhB-1 sRNA Lib

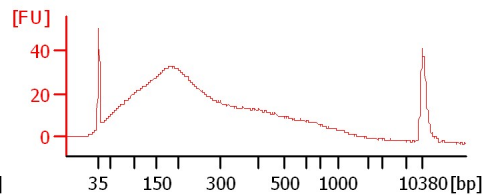
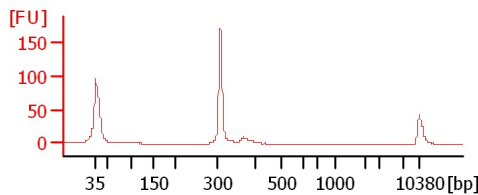
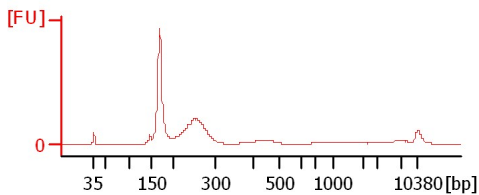
M-PhB-2 sRNA Lib



M-PhB-3 sRNA Lib

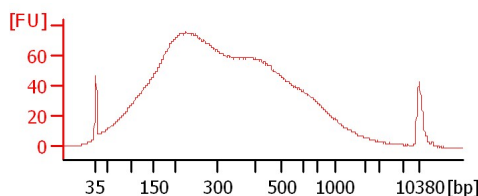
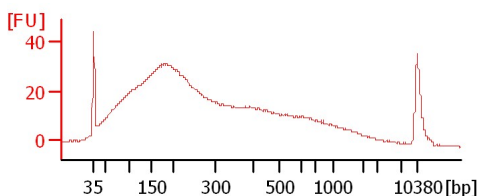
16s KB

DS Soni (3+2 Cycles)



DS Soni-2 (3+3 Cycles)

SB Soni 1:2 (3+3+2 Cycles)



Assay Class: High Sensitivity DNA Assay  
Data Path: C:\...ents and Settings\Bioanalyzer\2013-08-29\2013-08-29\_007.xad

Created: 8/29/2013 5:18:30 PM  
Modified: 8/29/2013 6:01:56 PM

**Electrophoresis File Run Summary (Chip Summary)**

Sample Name	Sample Comment	Rest. Digest	Status	Observation	Result Label	Result Color
G4 ChIP Lib		<input type="checkbox"/>	✓			
G4 ChIP Input Lib 1:2		<input type="checkbox"/>	✓			
P-PhB-2 sRNA Lib 1:2		<input type="checkbox"/>	✓			
P-PhB-3 sRNA Lib		<input type="checkbox"/>	✓			
M-PhB-1 sRNA Lib		<input type="checkbox"/>	✓			
M-PhB-2 sRNA Lib		<input type="checkbox"/>	✓			
M-PhB-3 sRNA Lib		<input type="checkbox"/>	✓			
16s KB		<input type="checkbox"/>	✓			
DS Soni (3+2 Cycles)		<input type="checkbox"/>	✓			
DS Soni-2 (3+3 Cycles)		<input type="checkbox"/>	✓			
SB Soni 1:2 (3+3+2 Cycles)		<input type="checkbox"/>	✓			
Ladder		<input type="checkbox"/>	✓			

**Chip Lot #**

**Reagent Kit Lot #**

**Chip Comments :**

Assay Class: High Sensitivity DNA Assay  
Data Path: C:\...ents and Settings\Bioanalyzer\2013-08-29\2013-08-29\_007.xad

Created: 8/29/2013 5:18:30 PM  
Modified: 8/29/2013 6:01:56 PM

**Electrophoresis Assay Details**

**General Analysis Settings**

Number of Available Sample and Ladder Wells (Max.) : 12  
Minimum Visible Range [s] : 32  
Maximum Visible Range [s] : 138  
Start Analysis Time Range [s] : 33  
End Analysis Time Range [s] : 137.5  
Ladder Concentration [pg/μl] : 1950  
Uses Standard Area for Ladder Fragments  
Lower Marker Concentration [pg/μl] : 125  
Upper Marker Concentration [pg/μl] : 75  
Used Upper Marker for Quantitation  
Standard Curve Fit is Point to Point  
Show Data Aligned to Lower and Upper Marker

**Integrator Settings**

Integration Start Time [s] : 33.05  
Integration End Time [s] : 137  
Slope Threshold : 0.8  
Height Threshold [FU] : 5  
Area Threshold : 0.1  
Width Threshold [s] : 0.6  
Baseline Plateau [s] : 0.5

**Filter Settings**

Filter Width [s] : 0.5  
Polynomial Order : 4

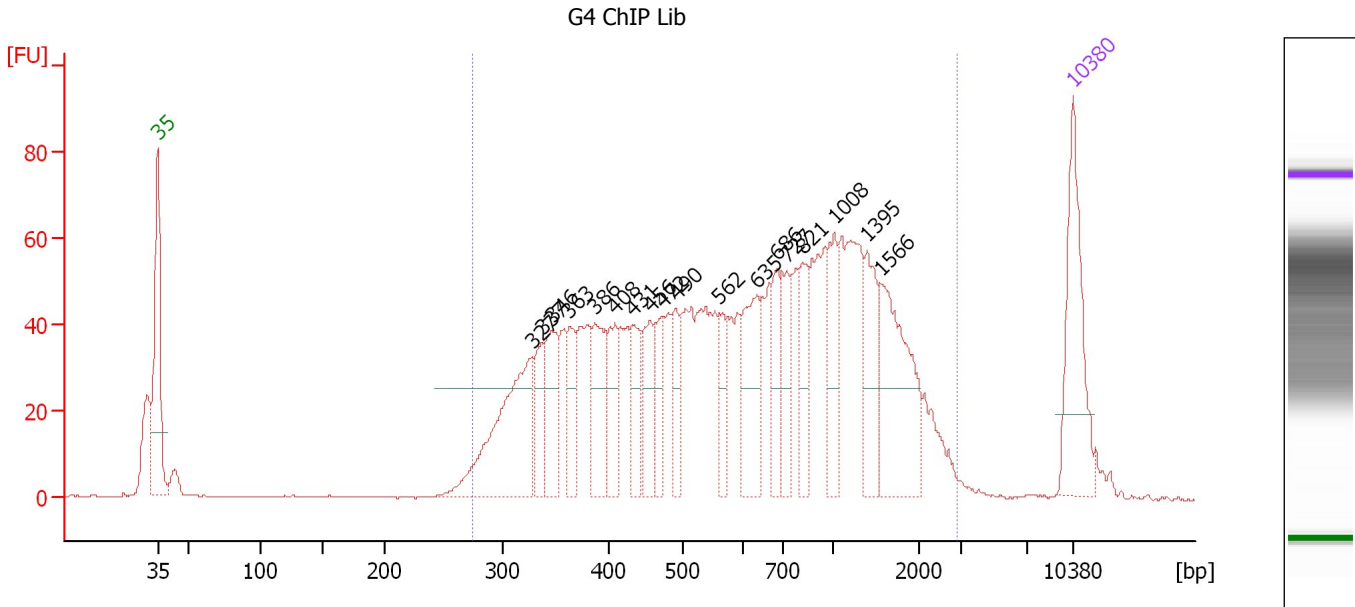
**Ladder**

Ladder Peak	Size	Area
1	35	160
2	50	210
3	100	208
4	150	221
5	200	242
6	300	270
7	400	305
8	500	306
9	600	336
10	700	321
11	1000	366
12	2000	413
13	3000	411
14	7000	400
15	10380	214

Assay Class: High Sensitivity DNA Assay  
 Data Path: C:\...ents and Settings\Bioanalyzer\2013-08-29\2013-08-29\_007.xad

Created: 8/29/2013 5:18:30 PM  
 Modified: 8/29/2013 6:01:56 PM

**Electropherogram Summary**



**Setpoint Deviations for sample 1 : G4 ChIP Lib**

Height Threshold [FU] : 25

**Overall Results for sample 1 : G4 ChIP Lib**

Number of peaks found: 18                      Corr. Area 1: 1,737.3  
 Noise: 0.1

**Peak table for sample 1 : G4 ChIP Lib**

Peak	Size [bp]	Conc. [pg/μl]	Molarity [pmol/l]	Observations
1	35	125.00	5,411.3	Lower Marker
2	327	151.86	702.7	
3	337	39.40	176.9	
4	346	57.94	253.5	
5	363	36.59	152.8	
6	386	60.12	235.7	
7	408	41.03	152.2	
8	431	42.76	150.2	
9	456	47.17	156.8	
10	472	33.67	108.1	
11	490	32.21	99.5	
12	562	28.64	77.2	
13	635	69.03	164.7	
14	686	36.03	79.5	
15	727	43.39	90.5	
16	821	37.57	69.3	
17	1,008	47.22	71.0	
18	1,395	48.10	52.2	
19	1,566	97.41	94.2	
20	10,380	75.00	10.9	Upper Marker


Assay Class: High Sensitivity DNA Assay  
Data Path: C:\...ents and Settings\Bioanalyzer\2013-08-29\2013-08-29\_007.xad

Created: 8/29/2013 5:18:30 PM  
Modified: 8/29/2013 6:01:56 PM

**Electropherogram Summary Continued ...**

... Region table for sample 1 :

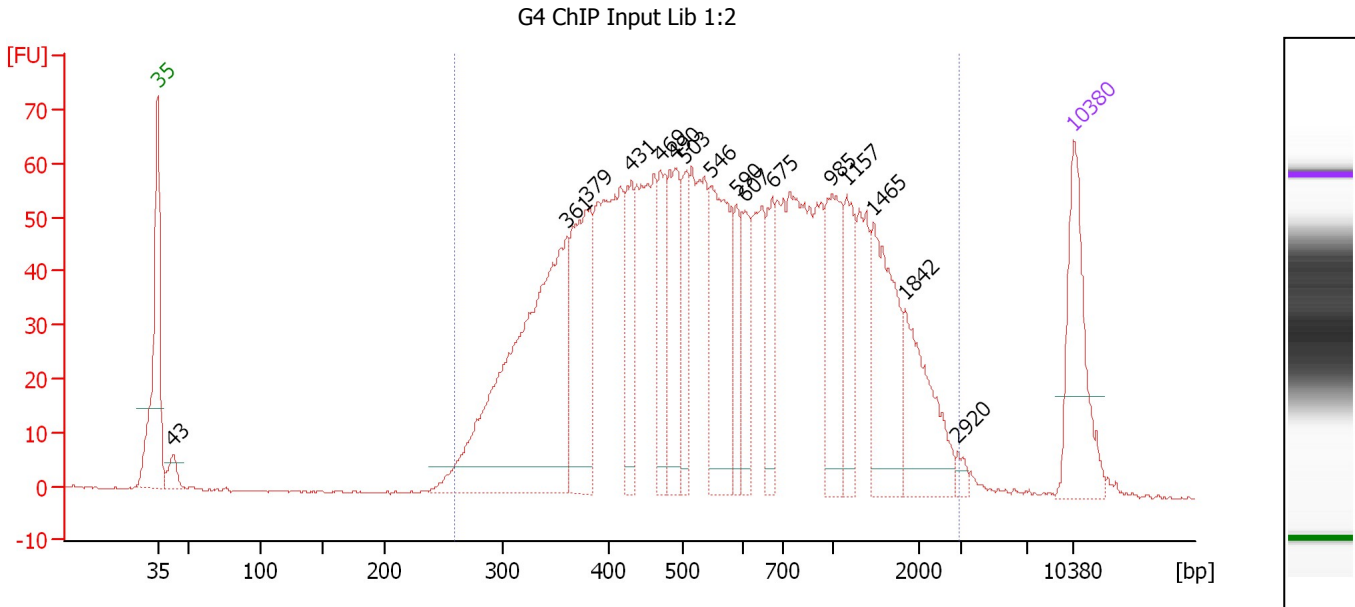
**G4 ChIP Lib**

<b>From [bp]</b>	<b>To [bp]</b>	<b>Average Size [bp]</b>	<b>Molarity [pmol/l]</b>	<b>Conc. [pg/μl]</b>	<b>Corr. Area</b>	<b>% of Total</b>	<b>Size distribution in CV [%]</b>	<b>Co lor</b>
275	2,913	797	4,593.5	1,612.24	1,737.3	95	64.1	

Assay Class: High Sensitivity DNA Assay  
 Data Path: C:\...ents and Settings\Bioanalyzer\2013-08-29\2013-08-29\_007.xad

Created: 8/29/2013 5:18:30 PM  
 Modified: 8/29/2013 6:01:56 PM

**Electropherogram Summary Continued ...**



**Overall Results for sample 2 : G4 ChIP Input Lib 1:2**

Number of peaks found: 16                      Corr. Area 1: 2,008.8  
 Noise: 0.2

**Peak table for sample 2 : G4 ChIP Input Lib 1:2**

Peak	Size [bp]	Conc. [pg/μl]	Molarity [pmol/l]	Observations
1	35	125.00	5,411.3	Lower Marker
2	43	20.26	715.8	
3	361	388.35	1,631.9	
4	379	149.79	598.7	
5	431	74.15	260.9	
6	469	58.40	188.6	
7	490	90.70	280.7	
8	503	52.82	159.1	
9	546	130.60	362.4	
10	590	41.27	106.0	
11	607	46.55	116.1	
12	675	51.31	115.2	
13	985	83.95	129.2	
14	1,157	52.72	69.0	
15	1,465	98.98	102.3	
16	1,842	77.40	63.7	
17	2,920	6.04	3.1	
18	10,380	75.00	10.9	Upper Marker

**Region table for sample 2 : G4 ChIP Input Lib 1:2**

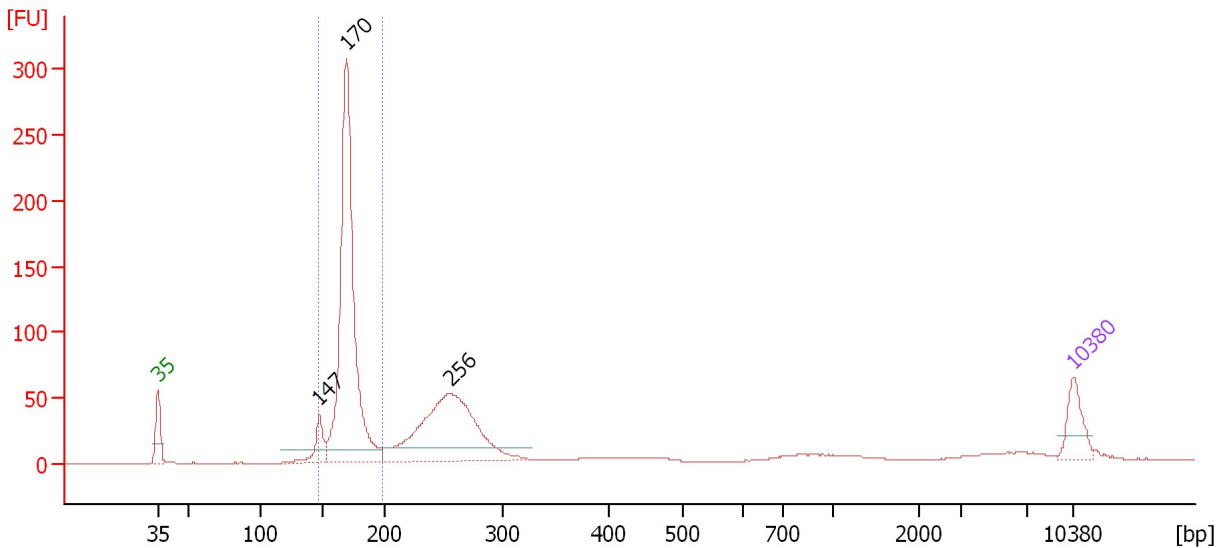
From [bp]	To [bp]	Average Size [bp]	Molarity [pmol/l]	Conc. [pg/μl]	Corr. Area	% of Total	Size distribution in CV [%]	Color
260	2,931	741	6,681.1	2,240.11	2,008.8	98	66.3	Blue

Assay Class: High Sensitivity DNA Assay  
 Data Path: C:\...ents and Settings\Bioanalyzer\2013-08-29\2013-08-29\_007.xad

Created: 8/29/2013 5:18:30 PM  
 Modified: 8/29/2013 6:01:56 PM

**Electropherogram Summary Continued ...**

P-PhB-2 sRNA Lib 1:2



**Setpoint Deviations for sample 3 : P-PhB-2 sRNA Lib 1:2**

Height Threshold [FU] : 10

**Overall Results for sample 3 : P-PhB-2 sRNA Lib 1:2**

Number of peaks found: 3                      Corr. Area 1: 665.8  
 Noise: 0.2

**Peak table for sample 3 : P-PhB-2 sRNA Lib 1:2**

Peak	Size [bp]	Conc. [pg/μl]	Molarity [pmol/l]	Observations
1	35	125.00	5,411.3	Lower Marker
2	147	96.35	990.0	
3	170	1,192.41	10,633.1	
4	256	677.32	4,008.5	
5	10,380	75.00	10.9	Upper Marker

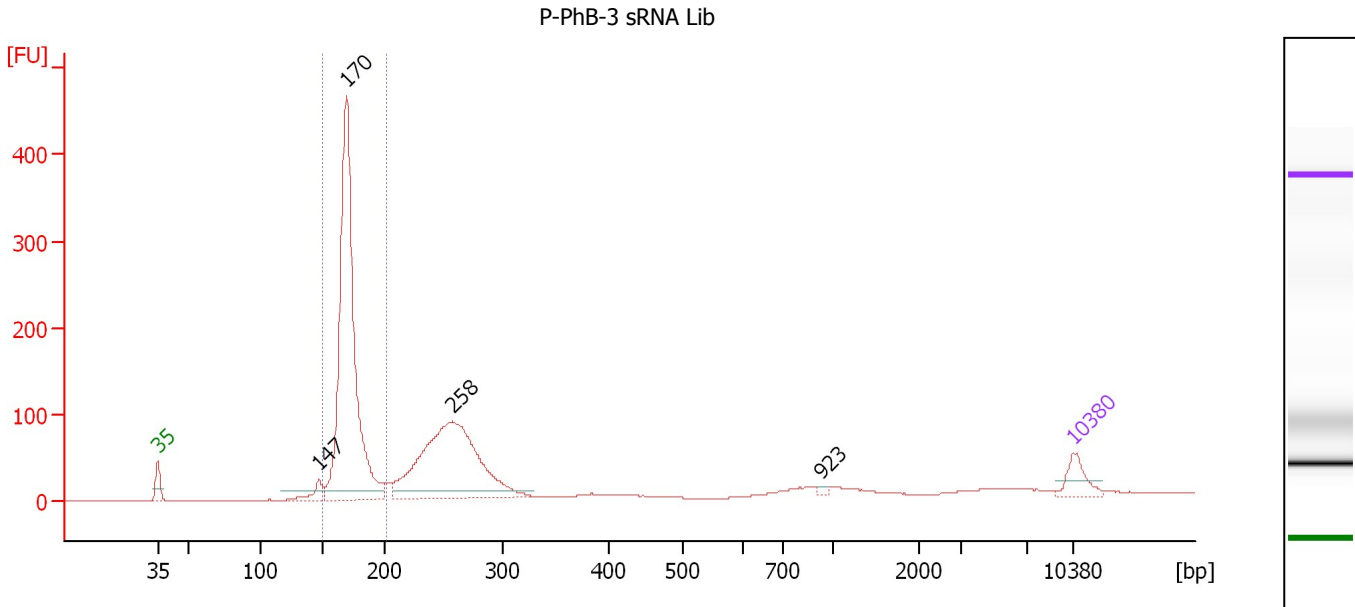
**Region table for sample 3 : P-PhB-2 sRNA Lib 1:2**

From [bp]	To [bp]	Average Size [bp]	Molarity [pmol/l]	Conc. [pg/μl]	Corr. Area	% of Total	Size distribution in CV [%]	Color
147	198	170	11,100.1	1,247.42	665.8	48	4.9	Blue

Assay Class: High Sensitivity DNA Assay  
 Data Path: C:\...ents and Settings\Bioanalyzer\2013-08-29\2013-08-29\_007.xad

Created: 8/29/2013 5:18:30 PM  
 Modified: 8/29/2013 6:01:56 PM

**Electropherogram Summary Continued ...**



**Setpoint Deviations for sample 4 : P-PhB-3 sRNA Lib**

Height Threshold [FU] : 10

**Overall Results for sample 4 : P-PhB-3 sRNA Lib**

Number of peaks found: 4                      Corr. Area 1: 1,040.3  
 Noise: 0.2

**Peak table for sample 4 : P-PhB-3 sRNA Lib**

Peak	Size [bp]	Conc. [pg/μl]	Molarity [pmol/l]	Observations
1	35	125.00	5,411.3	Lower Marker
2	147	78.92	811.1	
3	170	1,894.99	16,909.7	
4	258	1,160.80	6,826.3	
5	923	12.20	20.0	
6	10,380	75.00	10.9	Upper Marker

**Region table for sample 4 : P-PhB-3 sRNA Lib**

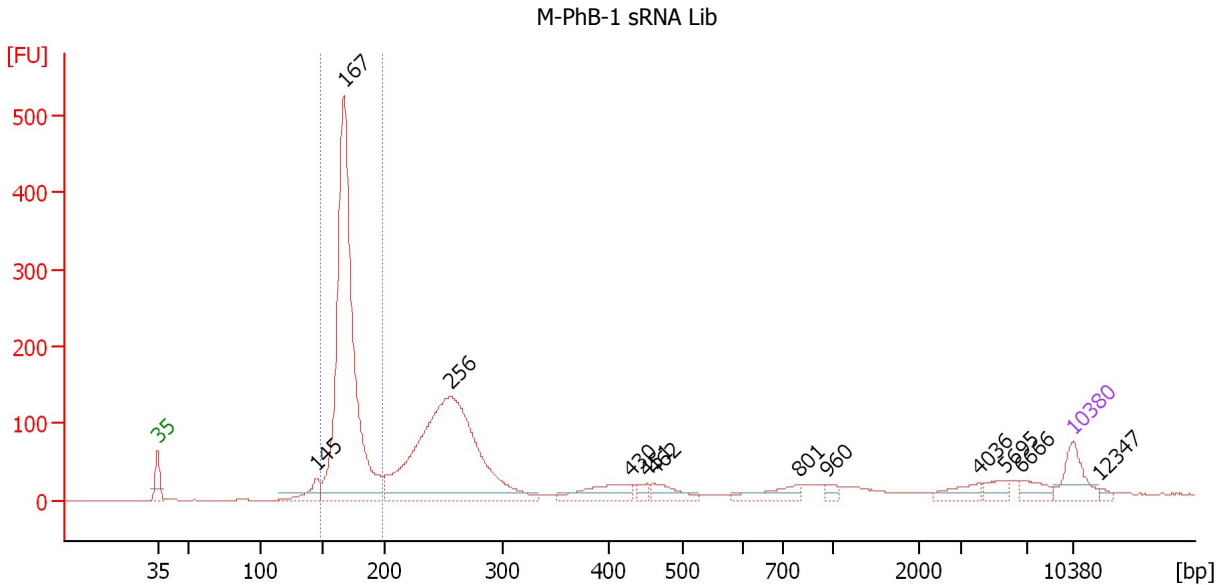
From [bp]	To [bp]	Average Size [bp]	Molarity [pmol/l]	Conc. [pg/μl]	Corr. Area	% of Total	Size distribution in CV [%]	Color
150	203	172	16,943.3	1,920.23	1,040.3	46	5.0	Blue



Assay Class: High Sensitivity DNA Assay  
 Data Path: C:\...ents and Settings\Bioanalyzer\2013-08-29\2013-08-29\_007.xad

Created: 8/29/2013 5:18:30 PM  
 Modified: 8/29/2013 6:01:56 PM

**Electropherogram Summary Continued ...**



**Setpoint Deviations for sample 5 : M-PhB-1 sRNA Lib**

Height Threshold [FU] : 10

**Overall Results for sample 5 : M-PhB-1 sRNA Lib**

Number of peaks found: 12                      Corr. Area 1: 1,278.7  
 Noise: 0.1

**Peak table for sample 5 : M-PhB-1 sRNA Lib**

Peak	Size [bp]	Conc. [pg/μl]	Molarity [pmol/l]	Observations
1	35	125.00	5,411.3	Lower Marker
2	145	67.72	706.3	
3	167	1,584.18	14,330.6	
4	256	1,213.46	7,176.6	
5	430	101.92	358.7	
6	451	21.67	72.8	
7	462	57.69	189.2	
8	801	58.72	111.1	
9	960	16.70	26.3	
10	4,036	38.19	14.3	
11	5,695	30.80	8.2	
12	6,666	36.76	8.4	
13	10,380	75.00	10.9	Upper Marker
14	12,347	0.00	0.0	

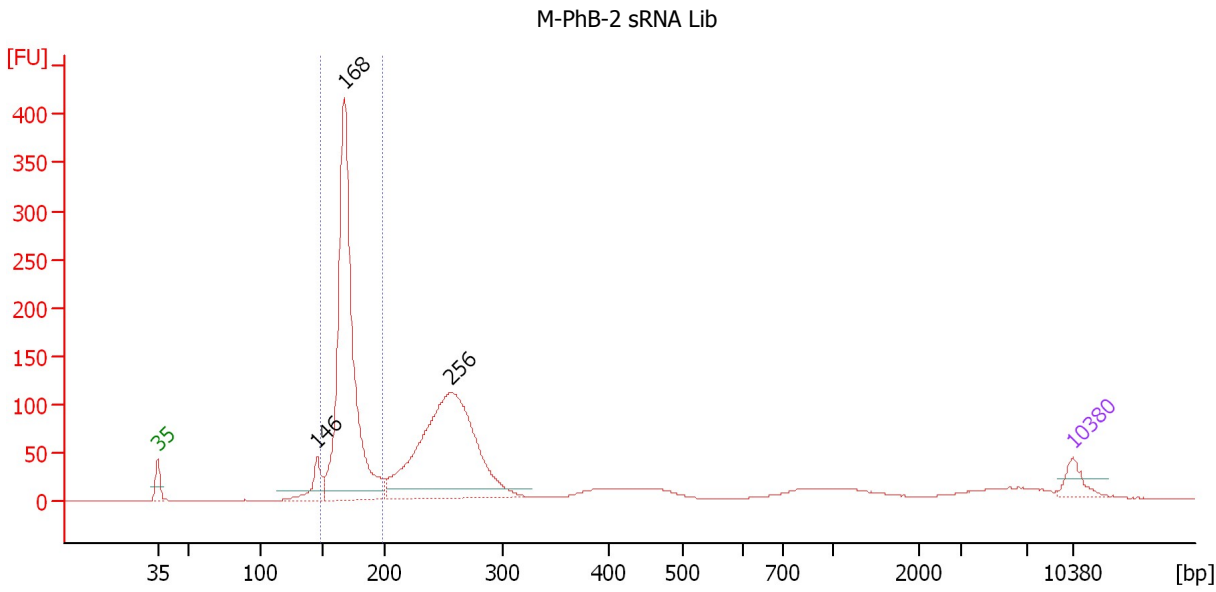
**Region table for sample 5 : M-PhB-1 sRNA Lib**

From [bp]	To [bp]	Average Size [bp]	Molarity [pmol/l]	Conc. [pg/μl]	Corr. Area	% of Total	Size distribution in CV [%]	Color
149	200	170	14,047.7	1,576.77	1,278.7	39	5.1	Blue

Assay Class: High Sensitivity DNA Assay  
 Data Path: C:\...ents and Settings\Bioanalyzer\2013-08-29\2013-08-29\_007.xad

Created: 8/29/2013 5:18:30 PM  
 Modified: 8/29/2013 6:01:56 PM

**Electropherogram Summary Continued ...**



**Setpoint Deviations for sample 6 : M-PhB-2 sRNA Lib**

Height Threshold [FU] : 10

**Overall Results for sample 6 : M-PhB-2 sRNA Lib**

Number of peaks found: 3                      Corr. Area 1: 954.4  
 Noise: 0.1

**Peak table for sample 6 : M-PhB-2 sRNA Lib**

Peak	Size [bp]	Conc. [pg/μl]	Molarity [pmol/l]	Observations
1	35	125.00	5,411.3	Lower Marker
2	146	177.35	1,843.0	
3	168	2,333.73	21,010.9	
4	256	1,846.58	10,910.4	
5	10,380	75.00	10.9	Upper Marker

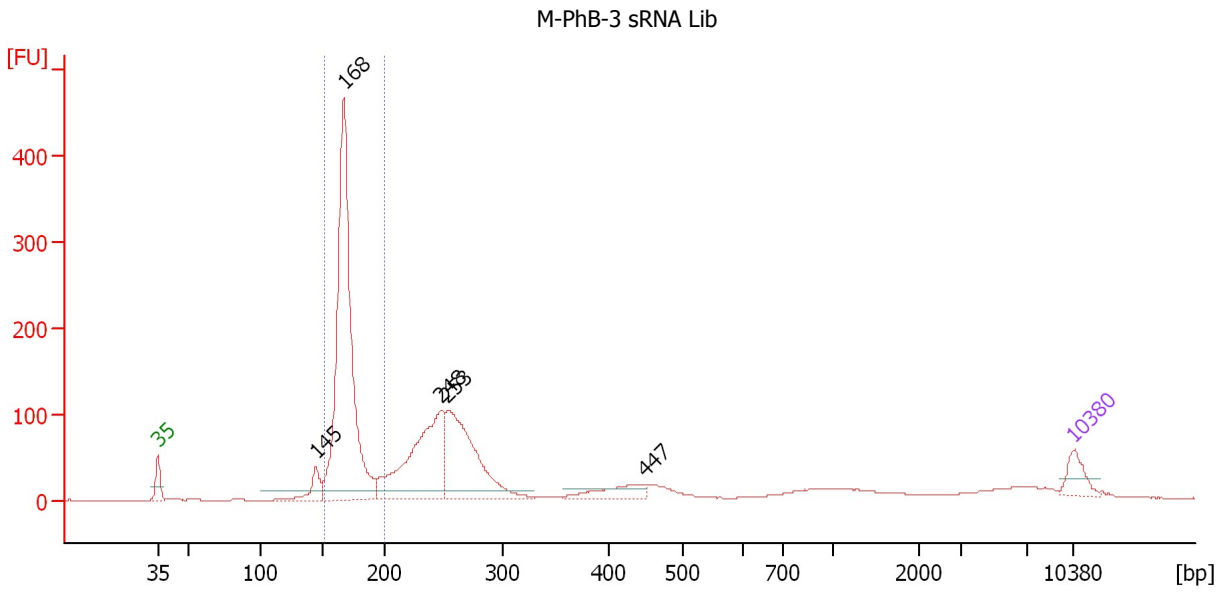
**Region table for sample 6 : M-PhB-2 sRNA Lib**

From [bp]	To [bp]	Average Size [bp]	Molarity [pmol/l]	Conc. [pg/μl]	Corr. Area	% of Total	Size distribution in CV [%]	Color
148	199	170	21,231.1	2,384.56	954.4	40	5.2	Blue

Assay Class: High Sensitivity DNA Assay  
 Data Path: C:\...ents and Settings\Bioanalyzer\2013-08-29\2013-08-29\_007.xad

Created: 8/29/2013 5:18:30 PM  
 Modified: 8/29/2013 6:01:56 PM

**Electropherogram Summary Continued ...**



**Setpoint Deviations for sample 7 : M-PhB-3 sRNA Lib**

Height Threshold [FU] : 10

**Overall Results for sample 7 : M-PhB-3 sRNA Lib**

Number of peaks found: 5                      Corr. Area 1: 1,017.7  
 Noise: 0.2

**Peak table for sample 7 : M-PhB-3 sRNA Lib**

Peak	Size [bp]	Conc. [pg/μl]	Molarity [pmol/l]	Observations
1	35	125.00	5,411.3	Lower Marker
2	145	124.84	1,306.5	
3	168	1,964.62	17,752.1	
4	248	812.26	4,959.5	
5	253	739.62	4,423.1	
6	447	121.16	410.3	
7	10,380	75.00	10.9	Upper Marker

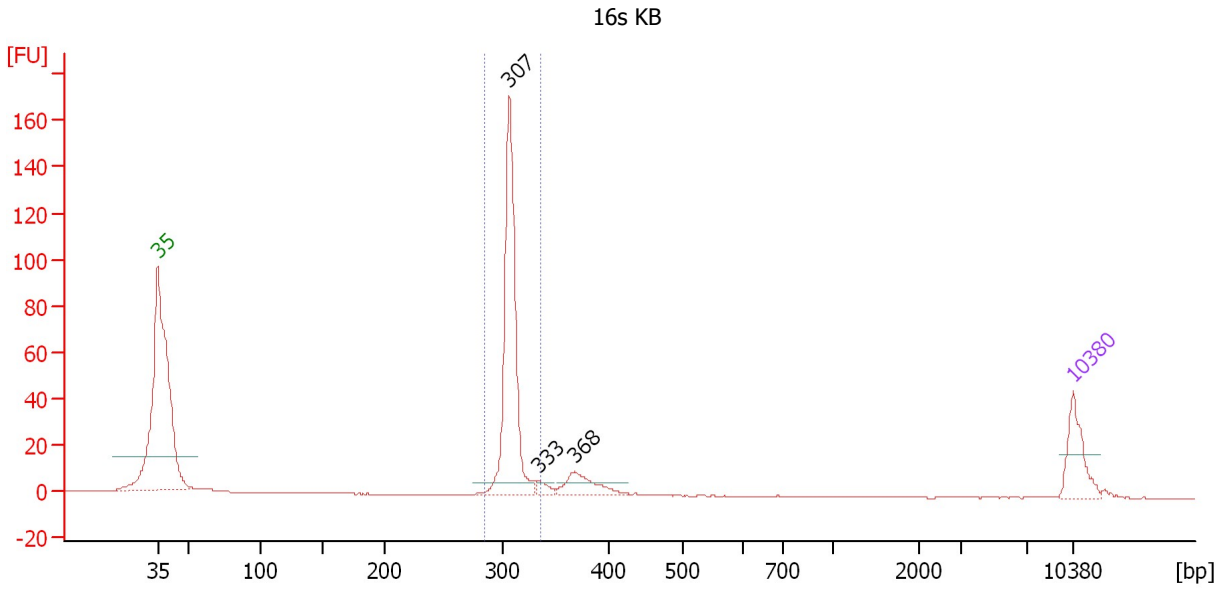
**Region table for sample 7 : M-PhB-3 sRNA Lib**

From [bp]	To [bp]	Average Size [bp]	Molarity [pmol/l]	Conc. [pg/μl]	Corr. Area	% of Total	Size distribution in CV [%]	Color
152	201	170	18,026.0	2,020.30	1,017.7	40	5.2	Blue

Assay Class: High Sensitivity DNA Assay  
 Data Path: C:\...ents and Settings\Bioanalyzer\2013-08-29\2013-08-29\_007.xad

Created: 8/29/2013 5:18:30 PM  
 Modified: 8/29/2013 6:01:56 PM

**Electropherogram Summary Continued ...**



**Overall Results for sample 8 : 16s KB**

Number of peaks found: 3                      Corr. Area 1: 227.8  
 Noise: 0.1

**Peak table for sample 8 : 16s KB**

Peak	Size [bp]	Conc. [pg/μl]	Molarity [pmol/l]	Observations
1	35	125.00	5,411.3	Lower Marker
2	307	513.19	2,536.6	
3	333	18.47	83.9	
4	368	72.01	296.5	
5	10,380	75.00	10.9	Upper Marker

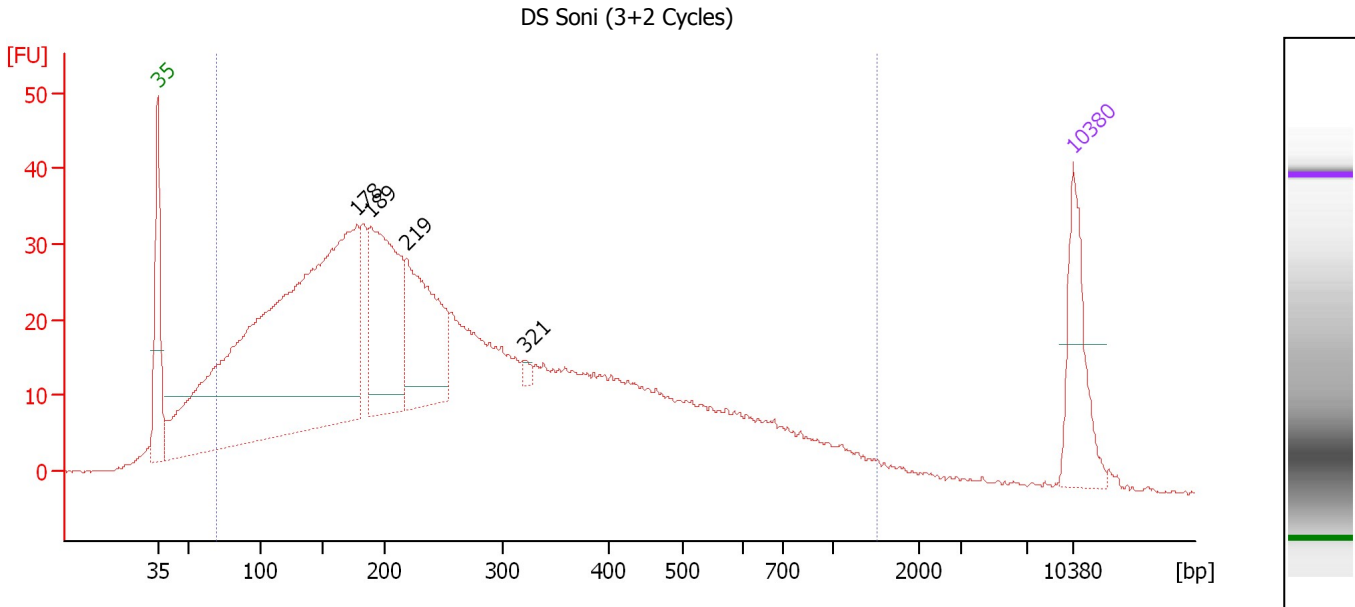
**Region table for sample 8 : 16s KB**

From [bp]	To [bp]	Average Size [bp]	Molarity [pmol/l]	Conc. [pg/μl]	Corr. Area	% of Total	Size distribution in CV [%]	Color
285	336	308	2,558.6	519.78	227.8	77	2.2	Blue

Assay Class: High Sensitivity DNA Assay  
 Data Path: C:\...ents and Settings\Bioanalyzer\2013-08-29\2013-08-29\_007.xad

Created: 8/29/2013 5:18:30 PM  
 Modified: 8/29/2013 6:01:56 PM

**Electropherogram Summary Continued ...**



**Setpoint Deviations for sample 9 : DS Soni (3+2 Cycles)**

Height Threshold [FU] : 3

**Overall Results for sample 9 : DS Soni (3+2 Cycles)**

Number of peaks found: 4                      Corr. Area 1: 1,269.5  
 Noise: 0.1

**Peak table for sample 9 : DS Soni (3+2 Cycles)**

Peak	Size [bp]	Conc. [pg/μl]	Molarity [pmol/l]	Observations
1	35	125.00	5,411.3	Lower Marker
2	178	996.94	8,463.5	
3	189	250.16	2,002.1	
4	219	199.43	1,378.9	
5	321	6.64	31.3	
6	10,380	75.00	10.9	Upper Marker

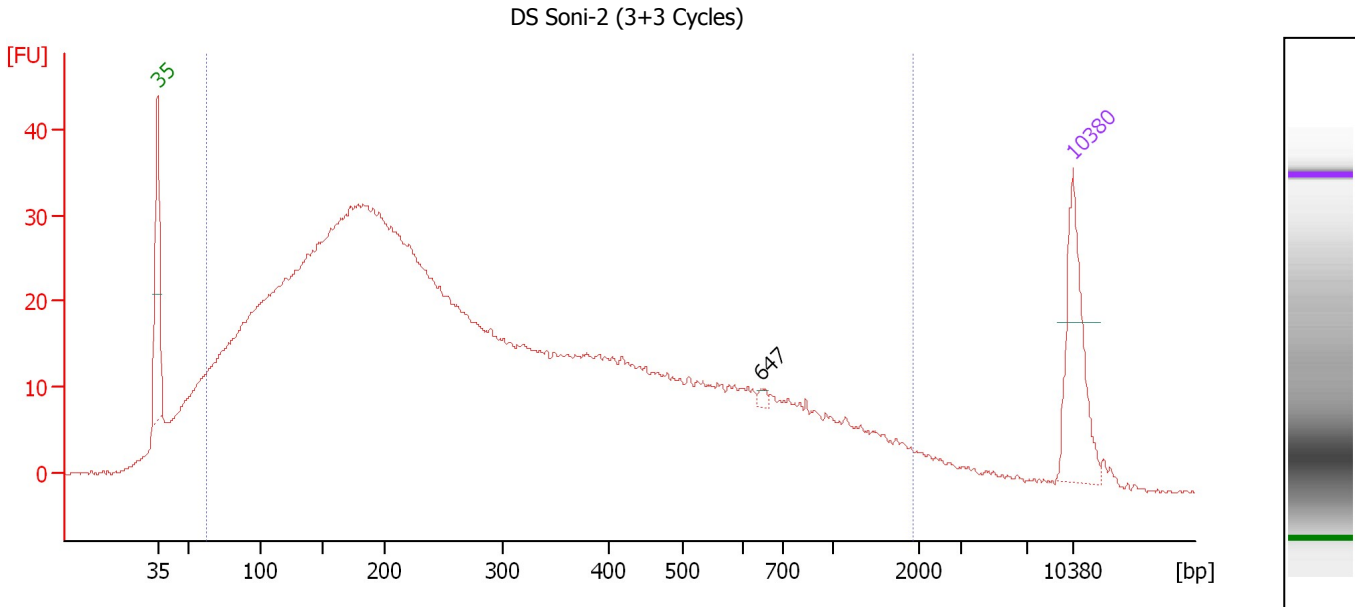
**Region table for sample 9 : DS Soni (3+2 Cycles)**

From [bp]	To [bp]	Average Size [bp]	Molarity [pmol/l]	Conc. [pg/μl]	Corr. Area	% of Total	Size distribution in CV [%]	Color
70	1,501	301	25,447.0	3,019.32	1,269.5	91	70.8	Blue

Assay Class: High Sensitivity DNA Assay  
 Data Path: C:\...ents and Settings\Bioanalyzer\2013-08-29\2013-08-29\_007.xad

Created: 8/29/2013 5:18:30 PM  
 Modified: 8/29/2013 6:01:56 PM

**Electropherogram Summary Continued ...**



**Setpoint Deviations for sample 10 : DS Soni-2 (3+3 Cycles)**

Height Threshold [FU] : 2

**Overall Results for sample 10 : DS Soni-2 (3+3 Cycles)**

Number of peaks found: 1                      Corr. Area 1: 1,305.1  
 Noise: 0.1

**Peak table for sample 10 : DS Soni-2 (3+3 Cycles)**

Peak	Size [bp]	Conc. [pg/µl]	Molarity [pmol/l]	Observations
1	35	125.00	5,411.3	Lower Marker
2	647	4.18	9.8	
3	10,380	75.00	10.9	Upper Marker

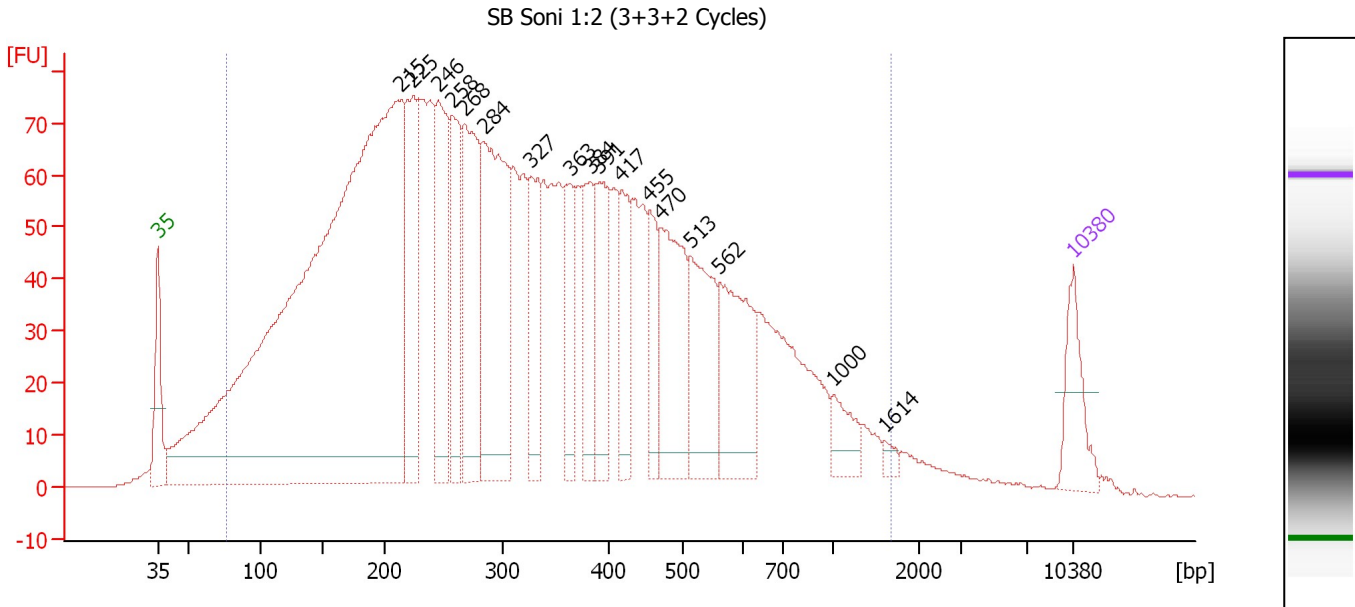
**Region table for sample 10 : DS Soni-2 (3+3 Cycles)**

From [bp]	To [bp]	Average Size [bp]	Molarity [pmol/l]	Conc. [pg/µl]	Corr. Area	% of Total	Size distribution in CV [%]	Color
62	1,943	347	31,515.6	3,729.43	1,305.1	93	86.8	Blue

Assay Class: High Sensitivity DNA Assay  
 Data Path: C:\...ents and Settings\Bioanalyzer\2013-08-29\2013-08-29\_007.xad

Created: 8/29/2013 5:18:30 PM  
 Modified: 8/29/2013 6:01:56 PM

**Electropherogram Summary Continued ...**



**Overall Results for sample 11 : SB Soni 1:2 (3+3+2 Cycles)**

Number of peaks found: 17      Corr. Area 1: 3,328.7  
 Noise: 0.1

**Peak table for sample 11 : SB Soni 1:2 (3+3+2 Cycles)**

Peak	Size [bp]	Conc. [pg/μl]	Molarity [pmol/l]	Observations
1	35	125.00	5,411.3	Lower Marker
2	215	2,617.34	18,460.8	
3	225	276.11	1,863.4	
4	246	283.61	1,749.0	
5	258	200.31	1,177.2	
6	268	314.41	1,776.8	
7	284	464.62	2,474.8	
8	327	169.90	786.5	
9	363	127.91	533.6	
10	384	139.04	549.3	
11	391	160.82	623.2	
12	417	127.28	462.3	
13	455	100.33	334.1	
14	470	241.52	779.4	
15	513	202.54	598.3	
16	562	222.62	600.6	
17	1,000	50.37	76.4	
18	1,614	11.30	10.6	
19	10,380	75.00	10.9	Upper Marker

**Region table for sample 11 : SB Soni 1:2 (3+3+2 Cycles)**

From [bp]	To [bp]	Average Size [bp]	Molarity [pmol/l]	Conc. [pg/μl]	Corr. Area	% of Total	Size distribution in CV [%]	Color
77	1,680	363	51,641.9	7,793.96	3,328.7	95	63.5	Blue