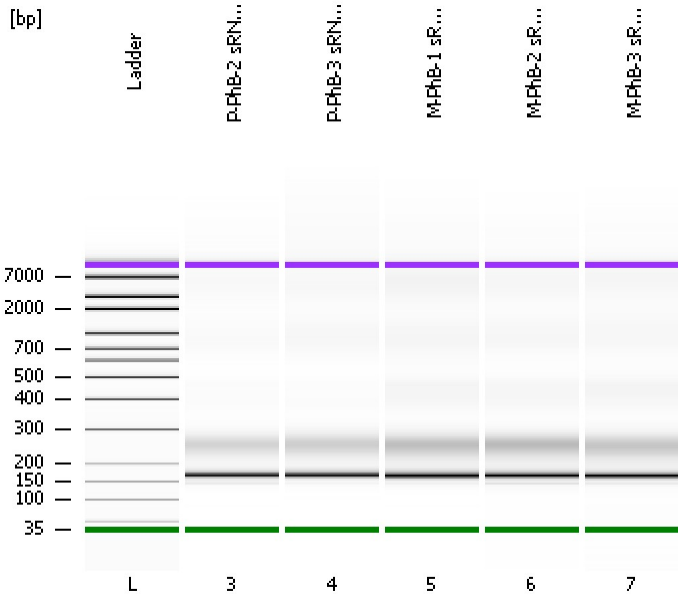


Assay Class: High Sensitivity DNA Assay
Data Path: C:\...ttings\Bioanalyzer\2013-08-29\2013-08-29_007_cDNA_Lib-3.xad

Created: 8/29/2013 5:18:30 PM
Modified: 8/29/2013 6:04:04 PM

Electrophoresis File Run Summary



Instrument Information:

Instrument Name: DE13701086 Firmware: C.01.069
Serial#: DE13701086 Type: G2938B

Assay Information:

Assay Origin Path: C:\Program Files\Agilent\2100 bioanalyzer\2100 expert\assays\dsDNA\High Sensitivity DNA.xsy
Assay Class: High Sensitivity DNA Assay
Version: 1.03
Assay Comments: Copyright © 2003-2010 Agilent Technologies

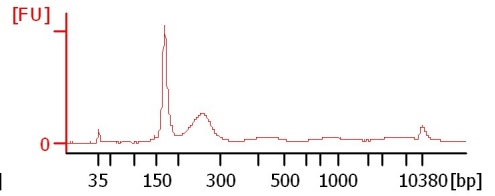
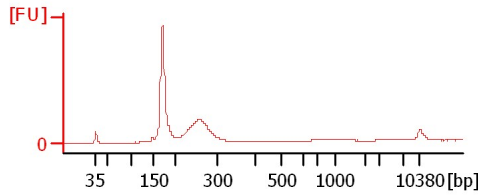
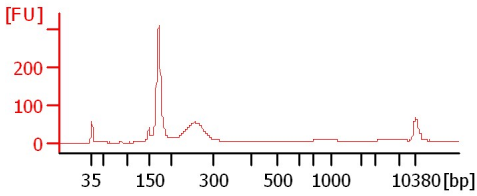
Chip Information:

Chip Lot #:
Reagent Kit Lot #:
Chip Comments:

P-PhB-2 sRNA Lib 1:2

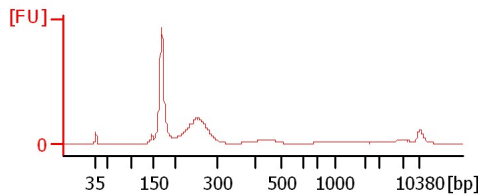
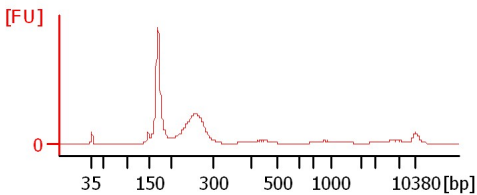
P-PhB-3 sRNA Lib

M-PhB-1 sRNA Lib



M-PhB-2 sRNA Lib

M-PhB-3 sRNA Lib



Assay Class: High Sensitivity DNA Assay
 Data Path: C:\...ttings\Bioanalyzer\2013-08-29\2013-08-29_007_cDNA_Lib-3.xad

Created: 8/29/2013 5:18:30 PM
 Modified: 8/29/2013 6:04:04 PM

Electrophoresis File Run Summary (Chip Summary)

Sample Name	Sample Comment	Rest. Digest	Status	Observation	Result Label	Result Color
P-PhB-2 sRNA Lib 1:2		<input type="checkbox"/>	✓			
P-PhB-3 sRNA Lib		<input type="checkbox"/>	✓			
M-PhB-1 sRNA Lib		<input type="checkbox"/>	✓			
M-PhB-2 sRNA Lib		<input type="checkbox"/>	✓			
M-PhB-3 sRNA Lib		<input type="checkbox"/>	✓			
Ladder		<input type="checkbox"/>	✓			

Chip Lot #

Reagent Kit Lot #

Chip Comments :

Assay Class: High Sensitivity DNA Assay
Data Path: C:\...ttings\Bioanalyzer\2013-08-29\2013-08-29_007_cDNA_Lib-3.xad

Created: 8/29/2013 5:18:30 PM
Modified: 8/29/2013 6:04:04 PM

Electrophoresis Assay Details

General Analysis Settings

Number of Available Sample and Ladder Wells (Max.) : 12
Minimum Visible Range [s] : 32
Maximum Visible Range [s] : 138
Start Analysis Time Range [s] : 33
End Analysis Time Range [s] : 137.5
Ladder Concentration [pg/μl] : 1950
Uses Standard Area for Ladder Fragments
Lower Marker Concentration [pg/μl] : 125
Upper Marker Concentration [pg/μl] : 75
Used Upper Marker for Quantitation
Standard Curve Fit is Point to Point
Show Data Aligned to Lower and Upper Marker

Integrator Settings

Integration Start Time [s] : 33.05
Integration End Time [s] : 137
Slope Threshold : 0.8
Height Threshold [FU] : 5
Area Threshold : 0.1
Width Threshold [s] : 0.6
Baseline Plateau [s] : 0.5

Filter Settings

Filter Width [s] : 0.5
Polynomial Order : 4

Ladder

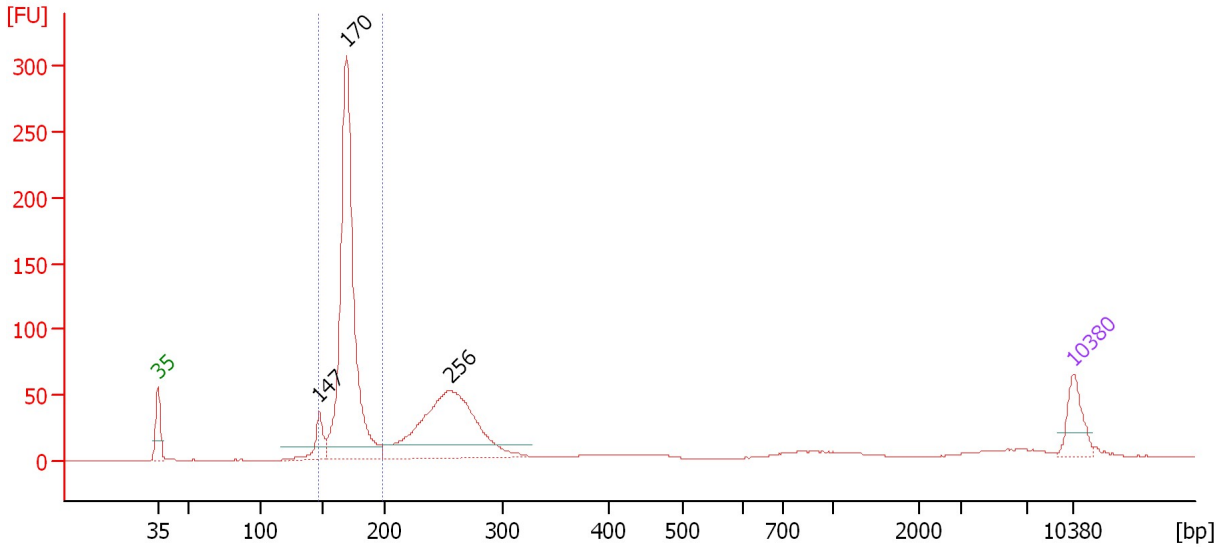
Ladder Peak	Size	Area
1	35	160
2	50	210
3	100	208
4	150	221
5	200	242
6	300	270
7	400	305
8	500	306
9	600	336
10	700	321
11	1000	366
12	2000	413
13	3000	411
14	7000	400
15	10380	214

Assay Class: High Sensitivity DNA Assay
 Data Path: C:\...ttings\Bioanalyzer\2013-08-29\2013-08-29_007_cDNA_Lib-3.xad

Created: 8/29/2013 5:18:30 PM
 Modified: 8/29/2013 6:04:04 PM

Electropherogram Summary

P-PhB-2 sRNA Lib 1:2



Setpoint Deviations for sample 3 : P-PhB-2 sRNA Lib 1:2

Height Threshold [FU] : 10

Overall Results for sample 3 : P-PhB-2 sRNA Lib 1:2

Number of peaks found: 3 Corr. Area 1: 665.8
 Noise: 0.2

Peak table for sample 3 : P-PhB-2 sRNA Lib 1:2

Peak	Size [bp]	Conc. [pg/μl]	Molarity [pmol/l]	Observations
1	35	125.00	5,411.3	Lower Marker
2	147	96.35	990.0	
3	170	1,192.41	10,633.1	
4	256	677.32	4,008.5	
5	10,380	75.00	10.9	Upper Marker

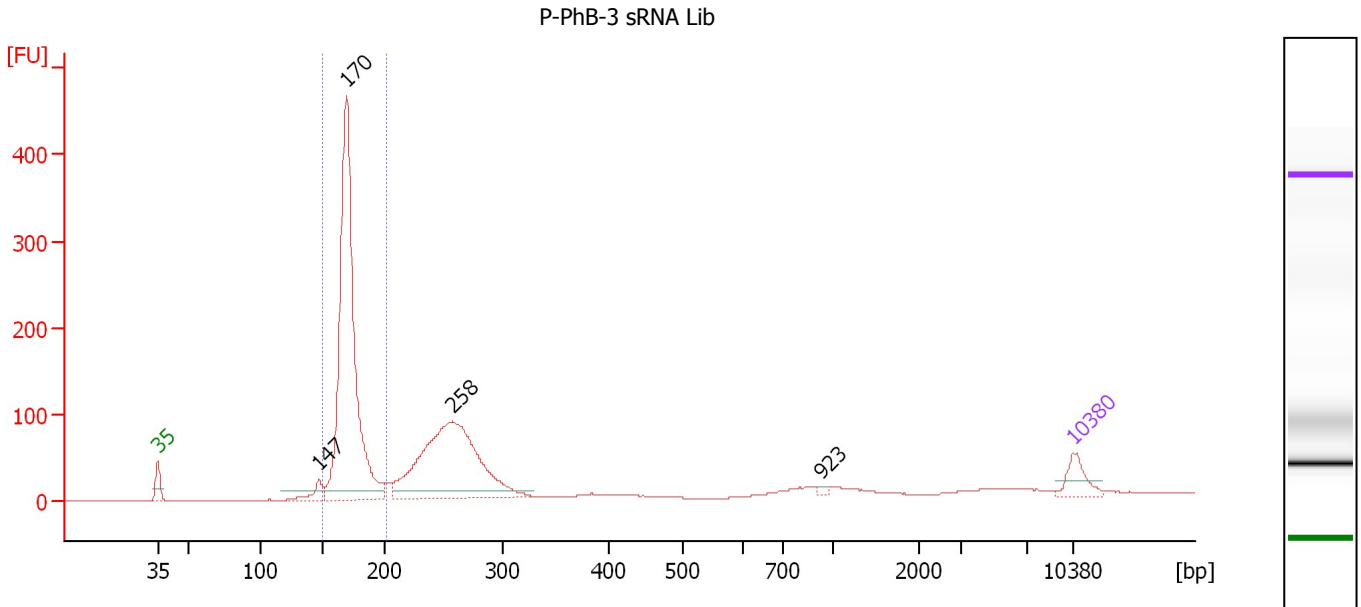
Region table for sample 3 : P-PhB-2 sRNA Lib 1:2

From [bp]	To [bp]	Average Size [bp]	Molarity [pmol/l]	Conc. [pg/μl]	Corr. Area	% of Total	Size distribution in CV [%]	Color
147	198	170	11,100.1	1,247.42	665.8	48	4.9	Blue

Assay Class: High Sensitivity DNA Assay
 Data Path: C:\...ttings\Bioanalyzer\2013-08-29\2013-08-29_007_cDNA_Lib-3.xad

Created: 8/29/2013 5:18:30 PM
 Modified: 8/29/2013 6:04:04 PM

Electropherogram Summary Continued ...



Setpoint Deviations for sample 4 : P-PhB-3 sRNA Lib

Height Threshold [FU] : 10

Overall Results for sample 4 : P-PhB-3 sRNA Lib

Number of peaks found: 4 Corr. Area 1: 1,040.3
 Noise: 0.2

Peak table for sample 4 : P-PhB-3 sRNA Lib

Peak	Size [bp]	Conc. [pg/μl]	Molarity [pmol/l]	Observations
1	35	125.00	5,411.3	Lower Marker
2	147	78.92	811.1	
3	170	1,894.99	16,909.7	
4	258	1,160.80	6,826.3	
5	923	12.20	20.0	
6	10,380	75.00	10.9	Upper Marker

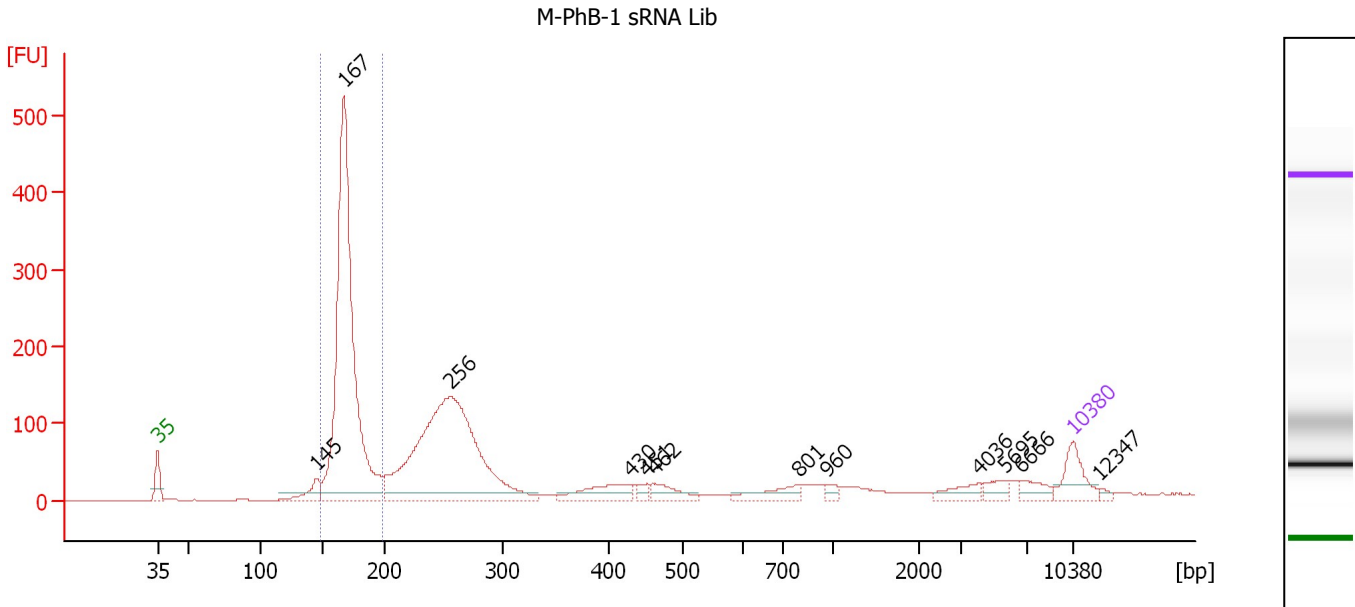
Region table for sample 4 : P-PhB-3 sRNA Lib

From [bp]	To [bp]	Average Size [bp]	Molarity [pmol/l]	Conc. [pg/μl]	Corr. Area	% of Total	Size distribution in CV [%]	Color
150	203	172	16,943.3	1,920.23	1,040.3	46	5.0	Blue

Assay Class: High Sensitivity DNA Assay
 Data Path: C:\...ttings\Bioanalyzer\2013-08-29\2013-08-29_007_cDNA_Lib-3.xad

Created: 8/29/2013 5:18:30 PM
 Modified: 8/29/2013 6:04:04 PM

Electropherogram Summary Continued ...



Setpoint Deviations for sample 5 : M-PhB-1 sRNA Lib

Height Threshold [FU] : 10

Overall Results for sample 5 : M-PhB-1 sRNA Lib

Number of peaks found: 12 Corr. Area 1: 1,278.7
 Noise: 0.1

Peak table for sample 5 : M-PhB-1 sRNA Lib

Peak	Size [bp]	Conc. [pg/μl]	Molarity [pmol/l]	Observations
1	35	125.00	5,411.3	Lower Marker
2	145	67.72	706.3	
3	167	1,584.18	14,330.6	
4	256	1,213.46	7,176.6	
5	430	101.92	358.7	
6	462	21.67	72.8	
7	462	57.69	189.2	
8	801	58.72	111.1	
9	960	16.70	26.3	
10	4,036	38.19	14.3	
11	5,695	30.80	8.2	
12	6,666	36.76	8.4	
13	10,380	75.00	10.9	Upper Marker
14	12,347	0.00	0.0	

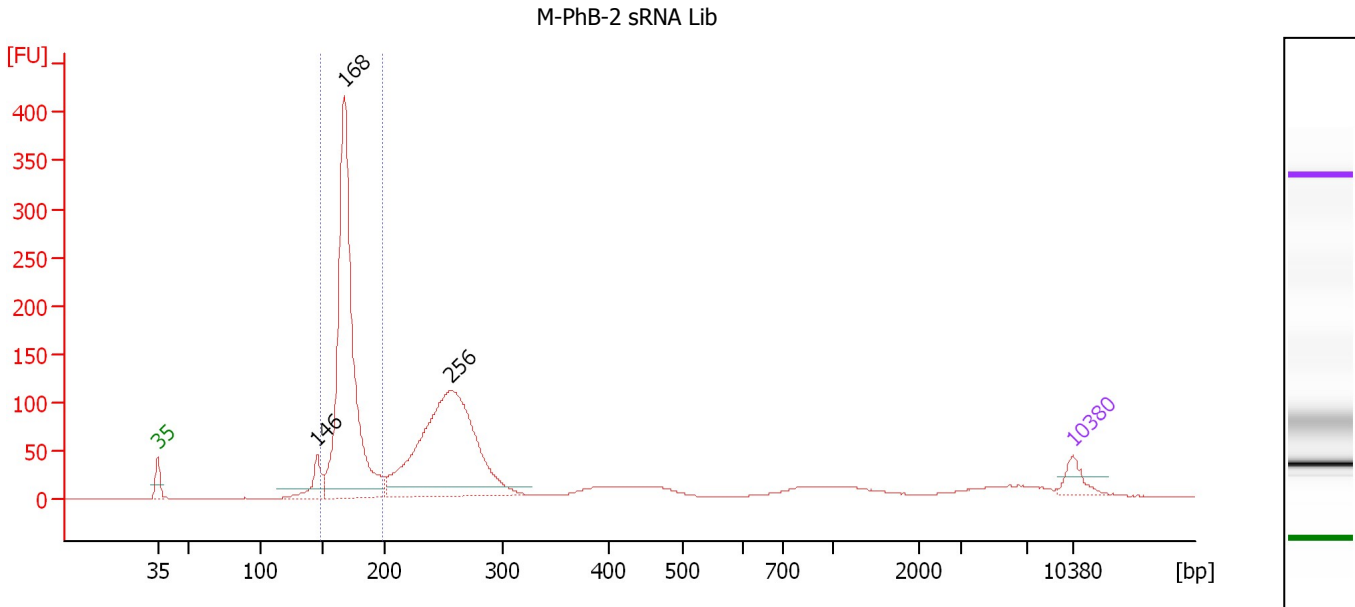
Region table for sample 5 : M-PhB-1 sRNA Lib

From [bp]	To [bp]	Average Size [bp]	Molarity [pmol/l]	Conc. [pg/μl]	Corr. Area	% of Total	Size distribution in CV [%]	Color
149	200	170	14,047.7	1,576.77	1,278.7	39	5.1	Blue

Assay Class: High Sensitivity DNA Assay
 Data Path: C:\...ttings\Bioanalyzer\2013-08-29\2013-08-29_007_cDNA_Lib-3.xad

Created: 8/29/2013 5:18:30 PM
 Modified: 8/29/2013 6:04:04 PM

Electropherogram Summary Continued ...



Setpoint Deviations for sample 6 : M-PhB-2 sRNA Lib

Height Threshold [FU] : 10

Overall Results for sample 6 : M-PhB-2 sRNA Lib

Number of peaks found: 3 Corr. Area 1: 954.4
 Noise: 0.1

Peak table for sample 6 : M-PhB-2 sRNA Lib

Peak	Size [bp]	Conc. [pg/μl]	Molarity [pmol/l]	Observations
1	35	125.00	5,411.3	Lower Marker
2	146	177.35	1,843.0	
3	168	2,333.73	21,010.9	
4	256	1,846.58	10,910.4	
5	10,380	75.00	10.9	Upper Marker

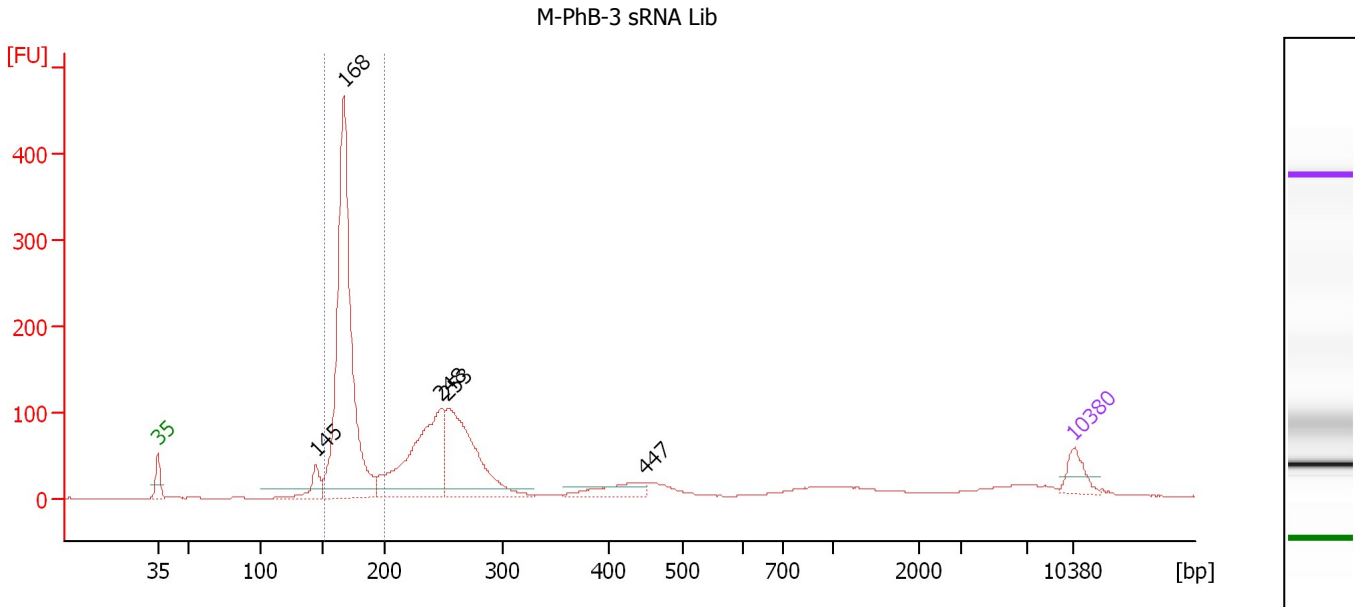
Region table for sample 6 : M-PhB-2 sRNA Lib

From [bp]	To [bp]	Average Size [bp]	Molarity [pmol/l]	Conc. [pg/μl]	Corr. Area	% of Total	Size distribution in CV [%]	Color
148	199	170	21,231.1	2,384.56	954.4	40	5.2	Blue

Assay Class: High Sensitivity DNA Assay
 Data Path: C:\...ttings\Bioanalyzer\2013-08-29\2013-08-29_007_cDNA_Lib-3.xad

Created: 8/29/2013 5:18:30 PM
 Modified: 8/29/2013 6:04:04 PM

Electropherogram Summary Continued ...



Setpoint Deviations for sample 7 : M-PhB-3 sRNA Lib

Height Threshold [FU] : 10

Overall Results for sample 7 : M-PhB-3 sRNA Lib

Number of peaks found: 5 Corr. Area 1: 1,017.7
 Noise: 0.2

Peak table for sample 7 : M-PhB-3 sRNA Lib

Peak	Size [bp]	Conc. [pg/μl]	Molarity [pmol/l]	Observations
1	35	125.00	5,411.3	Lower Marker
2	145	124.84	1,306.5	
3	168	1,964.62	17,752.1	
4	248	812.26	4,959.5	
5	253	739.62	4,423.1	
6	447	121.16	410.3	
7	10,380	75.00	10.9	Upper Marker

Region table for sample 7 : M-PhB-3 sRNA Lib

From [bp]	To [bp]	Average Size [bp]	Molarity [pmol/l]	Conc. [pg/μl]	Corr. Area	% of Total	Size distribution in CV [%]	Color
152	201	170	18,026.0	2,020.30	1,017.7	40	5.2	Blue