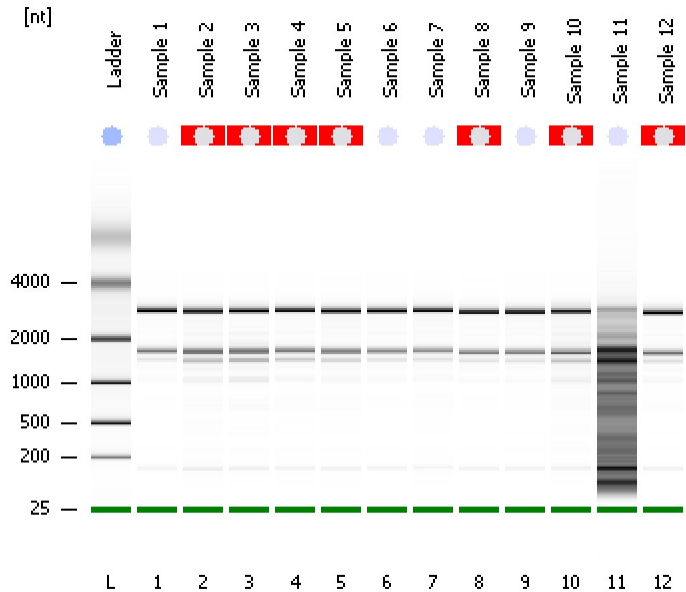


Assay Class: Eukaryote Total RNA Nano
Data Path: C:\...ents and Settings\Bioanalyzer\2013-08-30\2013-08-30_002.xad

Created: 8/30/2013 2:30:18 PM
Modified: 8/30/2013 2:54:12 PM

Electrophoresis File Run Summary



Instrument Information:

Instrument Name: DE13701086 Firmware: C.01.069
Serial#: DE13701086 Type: G2938B

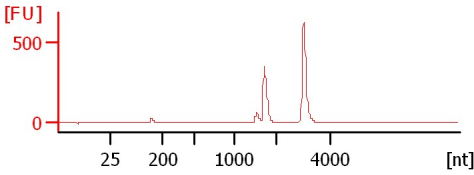
Assay Information:

Assay Origin Path: C:\Program Files\Agilent\2100 bioanalyzer\2100 expert\assays\RNA\Eukaryote Total RNA Nano Series II.xsy
Assay Class: Eukaryote Total RNA Nano
Version: 2.6
Assay Comments: Total RNA Analysis ng sensitivity (Eukaryote)
© Copyright 2003 - 2009 Agilent Technologies, Inc.

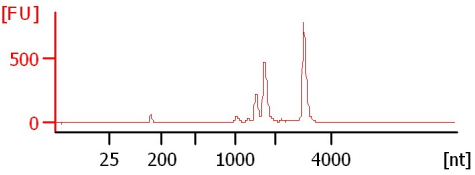
Chip Information:

Chip Lot #:
Reagent Kit Lot #:
Chip Comments:

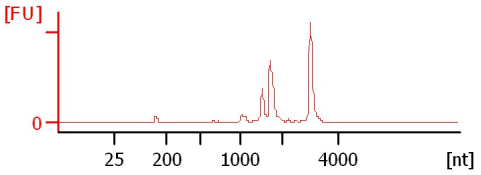
Sample 1
RIN: 9.50



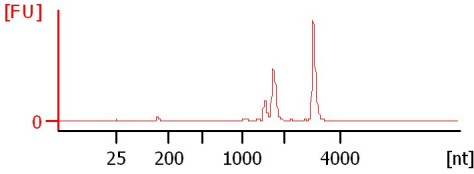
Sample 2
RIN N/A



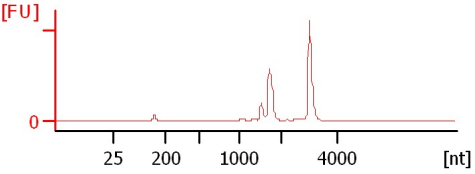
Sample 3
RIN N/A



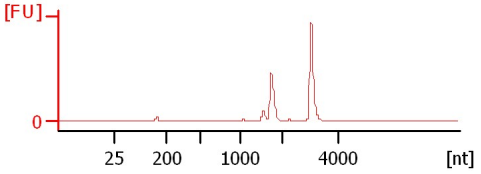
Sample 4
RIN N/A



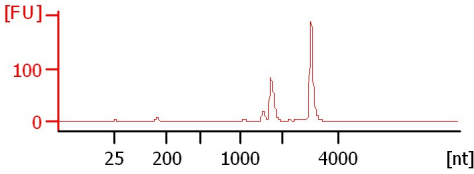
Sample 5
RIN N/A



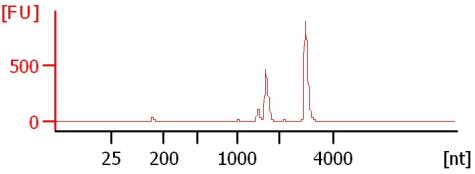
Sample 6
RIN: 9.10



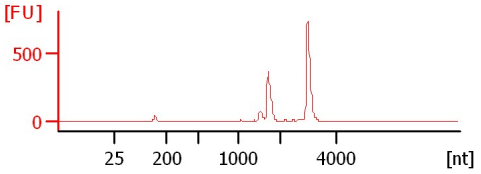
Sample 7
RIN: 8.80



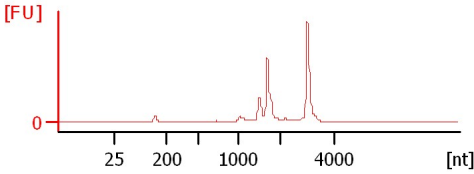
Sample 8
RIN N/A



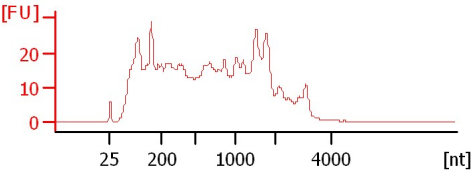
Sample 9
RIN: 9.20



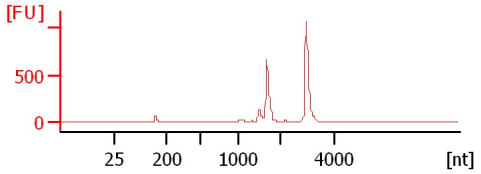
Sample 10
RIN N/A



Sample 11
RIN: 3



Sample 12
RIN N/A



Assay Class: Eukaryote Total RNA Nano
Data Path: C:\...ents and Settings\Bioanalyzer\2013-08-30\2013-08-30_002.xad

Created: 8/30/2013 2:30:18 PM
Modified: 8/30/2013 2:54:12 PM

Electrophoresis File Run Summary (Chip Summary)

Sample Name	Sample Comment	Status	Result Label	Result Color
Sample 1		✓	RIN: 9.50	
Sample 2		✓	RIN N/A	
Sample 3		✓	RIN N/A	
Sample 4		✓	RIN N/A	
Sample 5		✓	RIN N/A	
Sample 6		✓	RIN: 9.10	
Sample 7		✓	RIN: 8.80	
Sample 8		✓	RIN N/A	
Sample 9		✓	RIN: 9.20	
Sample 10		✓	RIN N/A	
Sample 11		✓	RIN:3	
Sample 12		✓	RIN N/A	
Ladder		✓	All Other Samples	

Chip Lot #

Reagent Kit Lot #

Chip Comments :

Assay Class: Eukaryote Total RNA Nano
Data Path: C:\...ents and Settings\Bioanalyzer\2013-08-30\2013-08-30_002.xad

Created: 8/30/2013 2:30:18 PM
Modified: 8/30/2013 2:54:12 PM

Electrophoresis Assay Details

General Analysis Settings

Number of Available Sample and Ladder Wells (Max.) : 13
Minimum Visible Range [s] : 17
Maximum Visible Range [s] : 70
Start Analysis Time Range [s] : 19
End Analysis Time Range [s] : 69
Ladder Concentration [ng/μl] : 150
Lower Marker Concentration [ng/μl] : 0
Upper Marker Concentration [ng/μl] : 0
Used Lower Marker for Quantitation
Standard Curve Fit is Logarithmic
Show Data Aligned to Lower Marker

Integrator Settings

Integration Start Time [s] : 19
Integration End Time [s] : 69
Slope Threshold : 0.6
Height Threshold [FU] : 0.5
Area Threshold : 0.2
Width Threshold [s] : 0.5
Baseline Plateau [s] : 6

Filter Settings

Filter Width [s] : 0.5
Polynomial Order : 4

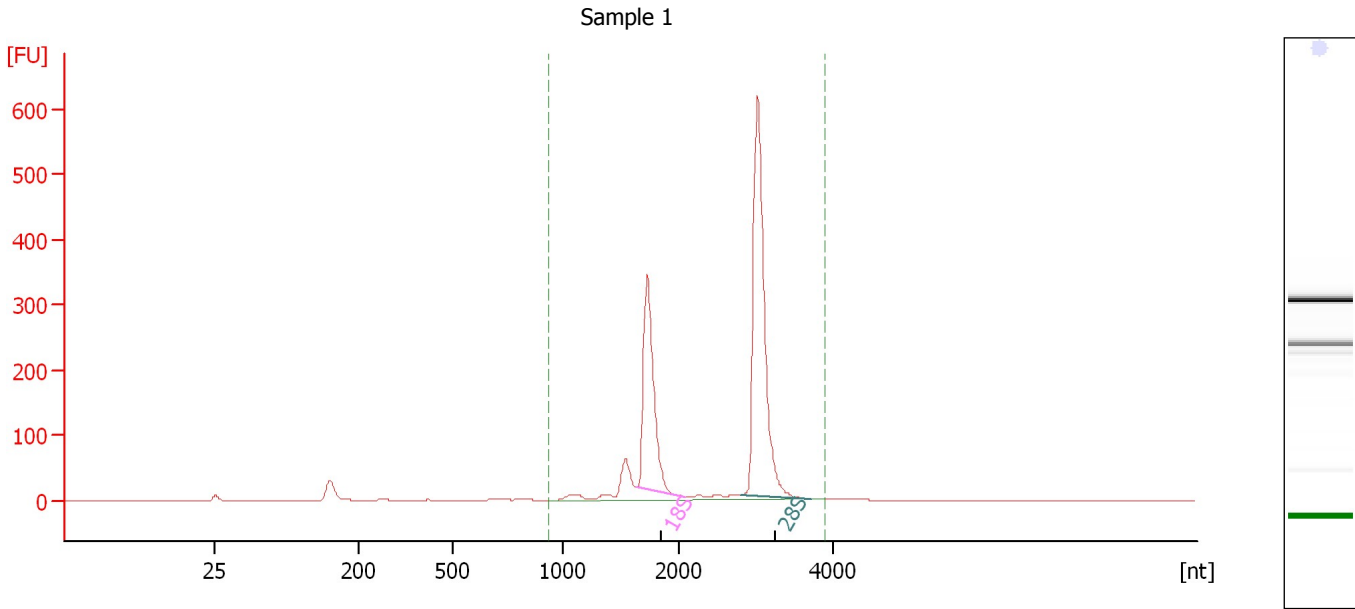
Ladder

Ladder Peak	Size
1	25
2	200
3	500
4	1000
5	2000
6	4000

Assay Class: Eukaryote Total RNA Nano
Data Path: C:\...ents and Settings\Bioanalyzer\2013-08-30\2013-08-30_002.xad

Created: 8/30/2013 2:30:18 PM
Modified: 8/30/2013 2:54:12 PM

Electropherogram Summary



Overall Results for sample 1 : Sample 1

RNA Area:	1,354.3	RNA Integrity Number (RIN):	9.5 (B.02.08)
RNA Concentration:	851 ng/μl	Result Flagging Color:	
rRNA Ratio [28s / 18s]:	1.8	Result Flagging Label:	RIN: 9.50

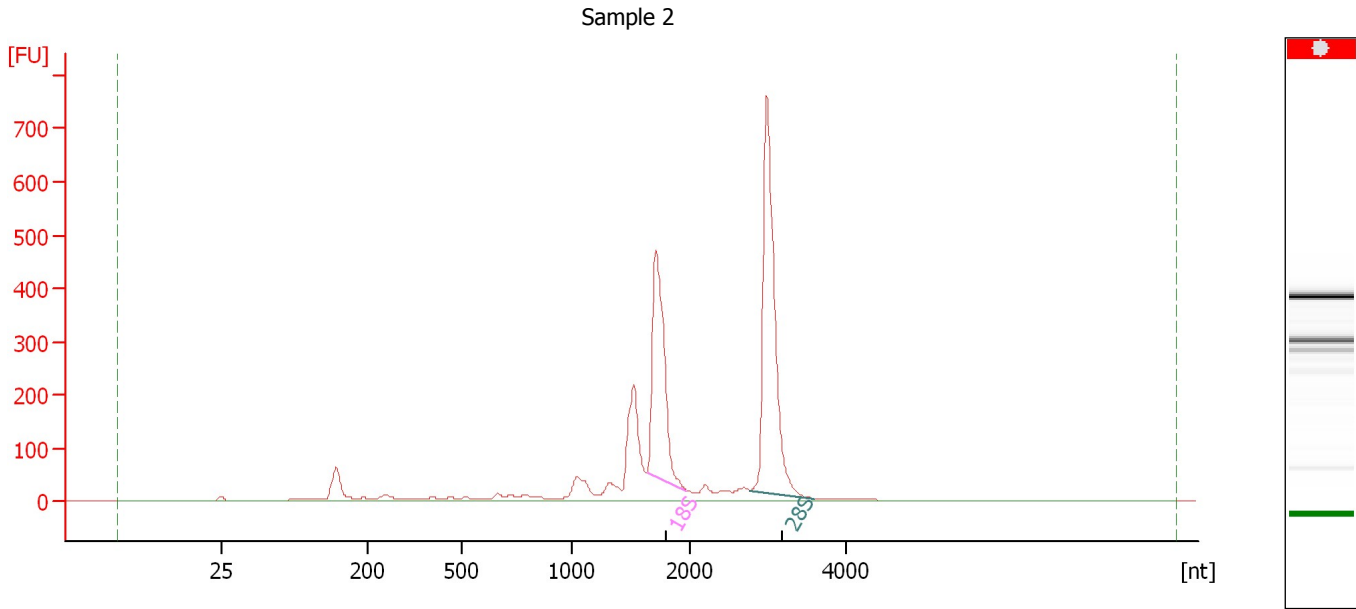
Fragment table for sample 1 : Sample 1

Name	Start Size [nt]	End Size [nt]	Area	% of total Area
18S	1,645	2,088	398.2	29.4
28S	2,810	3,725	726.8	53.7

Assay Class: Eukaryote Total RNA Nano
Data Path: C:\...ents and Settings\Bioanalyzer\2013-08-30\2013-08-30_002.xad

Created: 8/30/2013 2:30:18 PM
Modified: 8/30/2013 2:54:12 PM

Electropherogram Summary Continued ...



Overall Results for sample 2 : Sample 2

RNA Area:	2,721.9	RNA Integrity Number (RIN):	N/A (B.02.08)
RNA Concentration:	1,710 ng/μl	Result Flagging Color:	
rRNA Ratio [28s / 18s]:	1.5	Result Flagging Label:	RIN N/A

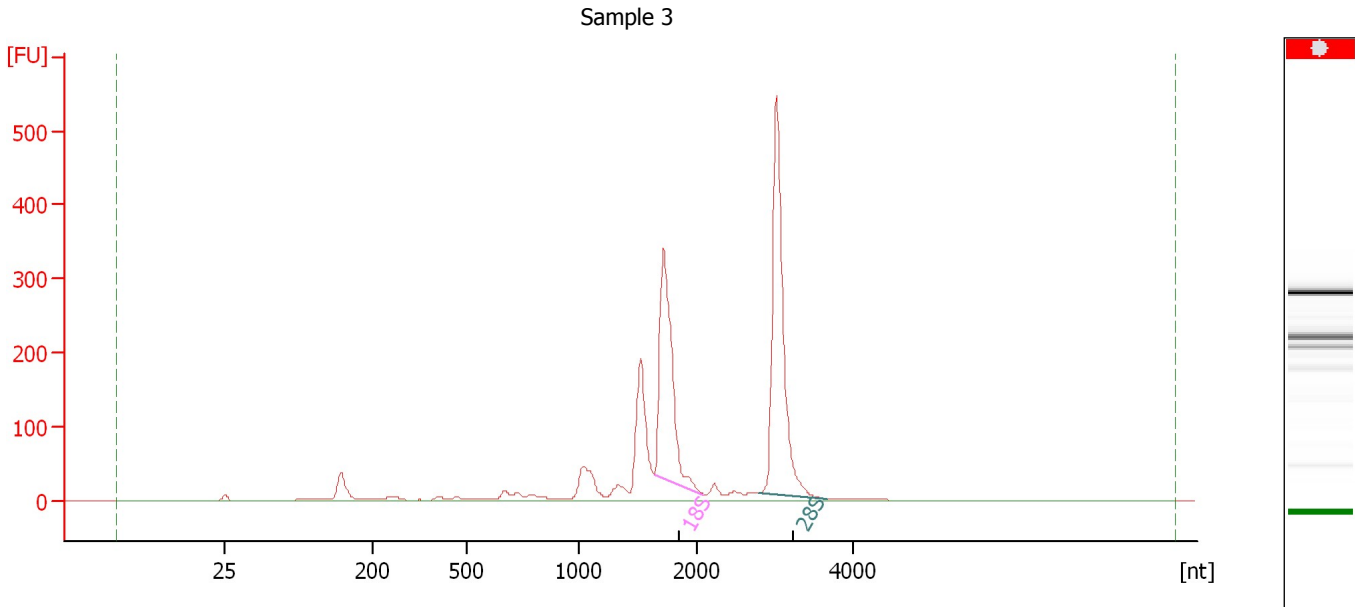
Fragment table for sample 2 : Sample 2

Name	Start Size [nt]	End Size [nt]	Area	% of total Area
18S	1,635	1,971	609.6	22.4
28S	2,781	3,591	908.3	33.4

Assay Class: Eukaryote Total RNA Nano
Data Path: C:\...ents and Settings\Bioanalyzer\2013-08-30\2013-08-30_002.xad

Created: 8/30/2013 2:30:18 PM
Modified: 8/30/2013 2:54:12 PM

Electropherogram Summary Continued ...



Overall Results for sample 3 : Sample 3

RNA Area:	1,888.2	RNA Integrity Number (RIN):	N/A (B.02.08)
RNA Concentration:	1,186 ng/μl	Result Flagging Color:	
rRNA Ratio [28s / 18s]:	1.4	Result Flagging Label:	RIN N/A

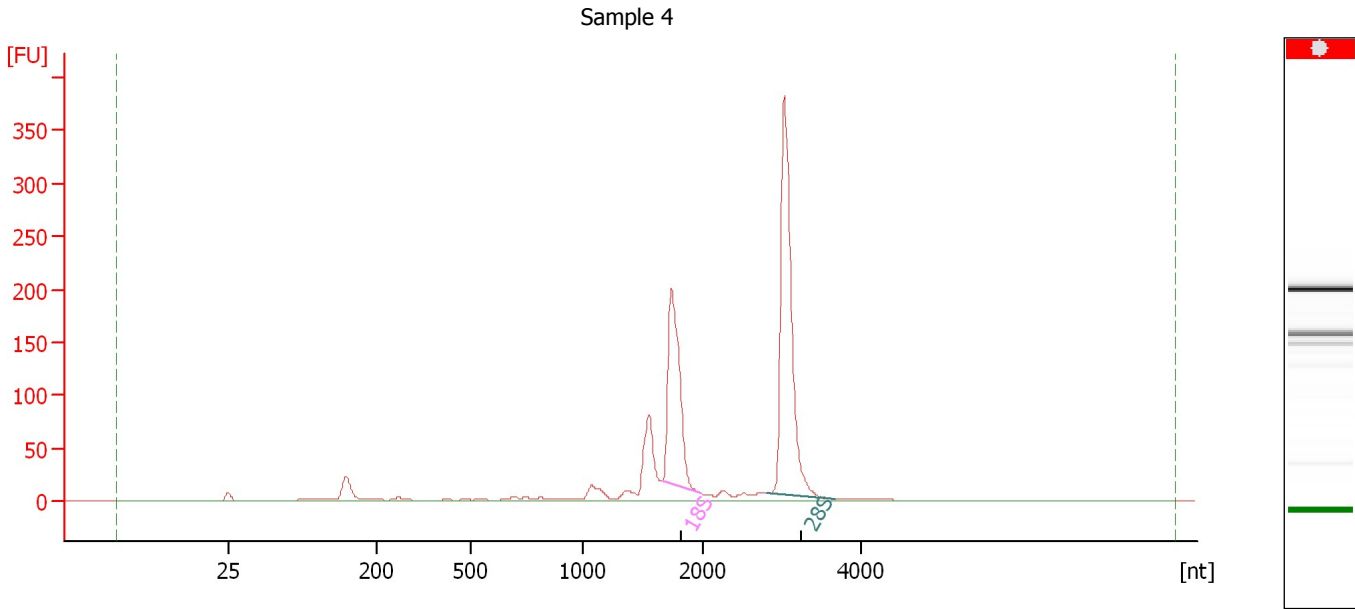
Fragment table for sample 3 : Sample 3

Name	Start Size [nt]	End Size [nt]	Area	% of total Area
18S	1,642	2,085	446.1	23.6
28S	2,793	3,665	612.8	32.5

Assay Class: Eukaryote Total RNA Nano
Data Path: C:\...ents and Settings\Bioanalyzer\2013-08-30\2013-08-30_002.xad

Created: 8/30/2013 2:30:18 PM
Modified: 8/30/2013 2:54:12 PM

Electropherogram Summary Continued ...



Overall Results for sample 4 : Sample 4

RNA Area:	1,063.0	RNA Integrity Number (RIN):	N/A (B.02.08)
RNA Concentration:	668 ng/μl	Result Flagging Color:	
rRNA Ratio [28s / 18s]:	1.6	Result Flagging Label:	RIN N/A

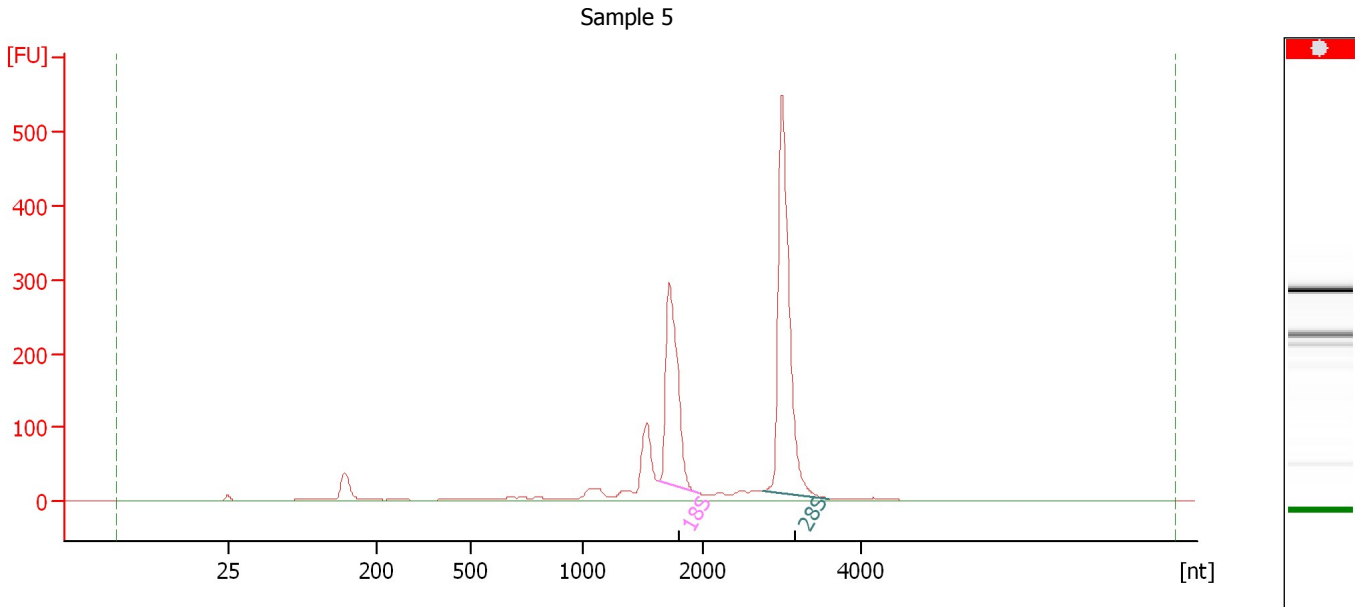
Fragment table for sample 4 : Sample 4

Name	Start Size [nt]	End Size [nt]	Area	% of total Area
18S	1,656	1,987	254.6	24.0
28S	2,820	3,672	415.0	39.0

Assay Class: Eukaryote Total RNA Nano
Data Path: C:\...ents and Settings\Bioanalyzer\2013-08-30\2013-08-30_002.xad

Created: 8/30/2013 2:30:18 PM
Modified: 8/30/2013 2:54:12 PM

Electropherogram Summary Continued ...



Overall Results for sample 5 : Sample 5

RNA Area:	1,636.1	RNA Integrity Number (RIN):	N/A (B.02.08)
RNA Concentration:	1,028 ng/μl	Result Flagging Color:	
rRNA Ratio [28s / 18s]:	1.6	Result Flagging Label:	RIN N/A

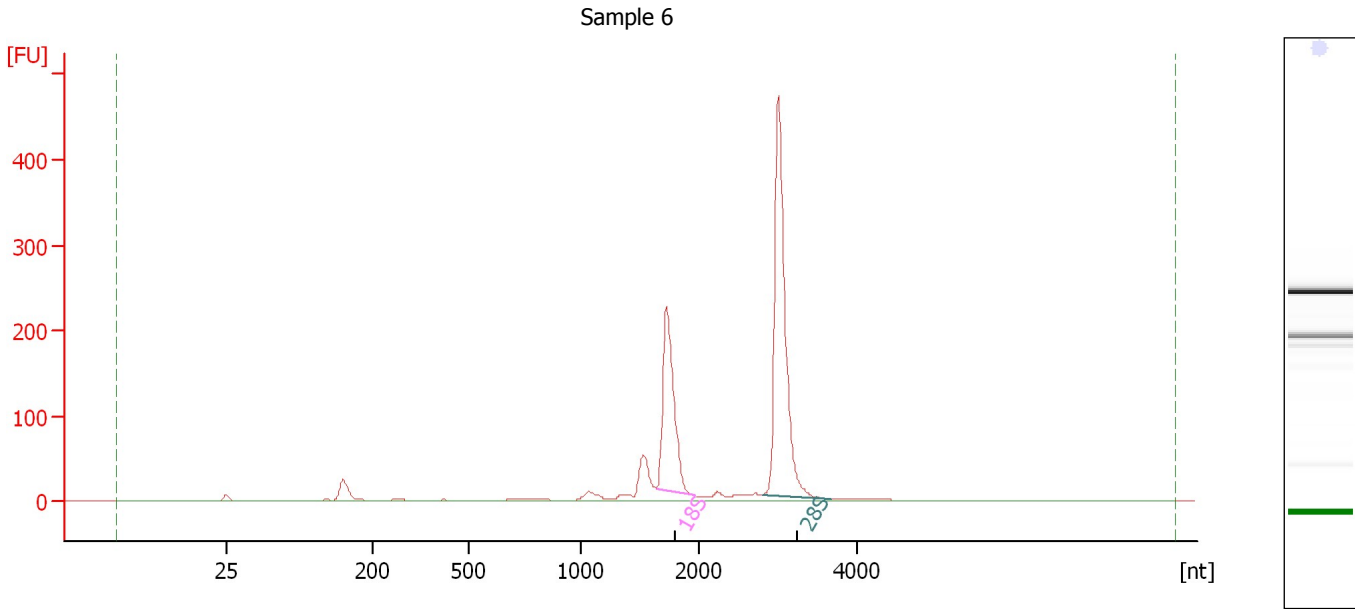
Fragment table for sample 5 : Sample 5

Name	Start Size [nt]	End Size [nt]	Area	% of total Area
18S	1,629	1,960	389.6	23.8
28S	2,766	3,591	624.8	38.2

Assay Class: Eukaryote Total RNA Nano
Data Path: C:\...ents and Settings\Bioanalyzer\2013-08-30\2013-08-30_002.xad

Created: 8/30/2013 2:30:18 PM
Modified: 8/30/2013 2:54:12 PM

Electropherogram Summary Continued ...



Overall Results for sample 6 : Sample 6

RNA Area:	1,161.0	RNA Integrity Number (RIN):	9.1 (B.02.08)
RNA Concentration:	729 ng/μl	Result Flagging Color:	
rRNA Ratio [28s / 18s]:	1.9	Result Flagging Label:	RIN: 9.10

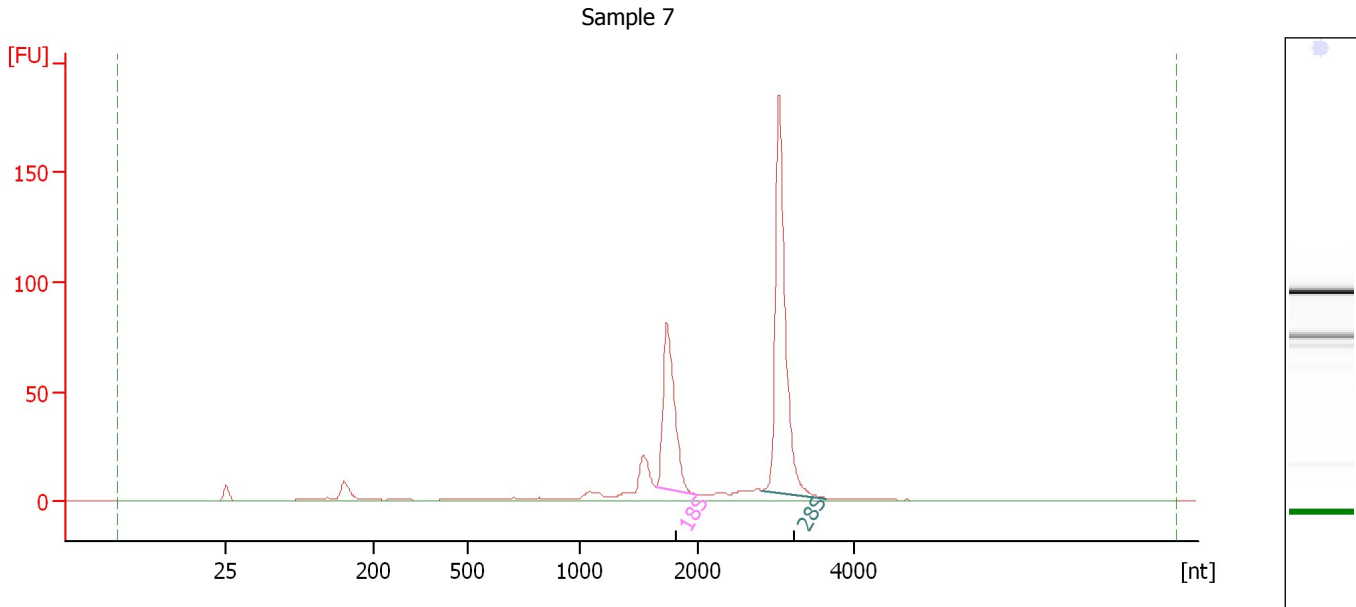
Fragment table for sample 6 : Sample 6

Name	Start Size [nt]	End Size [nt]	Area	% of total Area
18S	1,643	1,958	281.8	24.3
28S	2,807	3,676	528.8	45.5

Assay Class: Eukaryote Total RNA Nano
Data Path: C:\...ents and Settings\Bioanalyzer\2013-08-30\2013-08-30_002.xad

Created: 8/30/2013 2:30:18 PM
Modified: 8/30/2013 2:54:12 PM

Electropherogram Summary Continued ...



Overall Results for sample 7 : Sample 7

RNA Area:	466.4	RNA Integrity Number (RIN):	8.8 (B.02.08)
RNA Concentration:	293 ng/μl	Result Flagging Color:	
rRNA Ratio [28s / 18s]:	1.9	Result Flagging Label:	RIN: 8.80

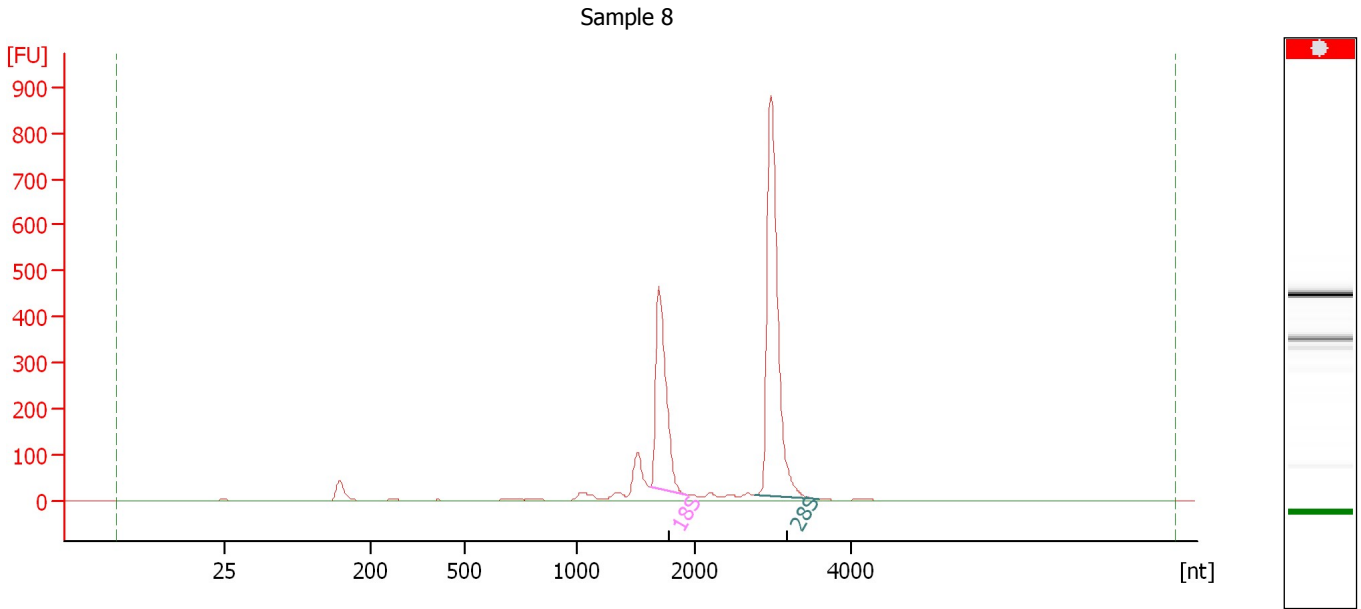
Fragment table for sample 7 : Sample 7

Name	Start Size [nt]	End Size [nt]	Area	% of total Area
18S	1,651	1,993	103.0	22.1
28S	2,807	3,624	194.8	41.8

Assay Class: Eukaryote Total RNA Nano
Data Path: C:\...ents and Settings\Bioanalyzer\2013-08-30\2013-08-30_002.xad

Created: 8/30/2013 2:30:18 PM
Modified: 8/30/2013 2:54:12 PM

Electropherogram Summary Continued ...



Overall Results for sample 8 : Sample 8

RNA Area:	2,131.6	RNA Integrity Number (RIN):	N/A (B.02.08)
RNA Concentration:	1,339 ng/μl	Result Flagging Color:	
rRNA Ratio [28s / 18s]:	1.9	Result Flagging Label:	RIN N/A

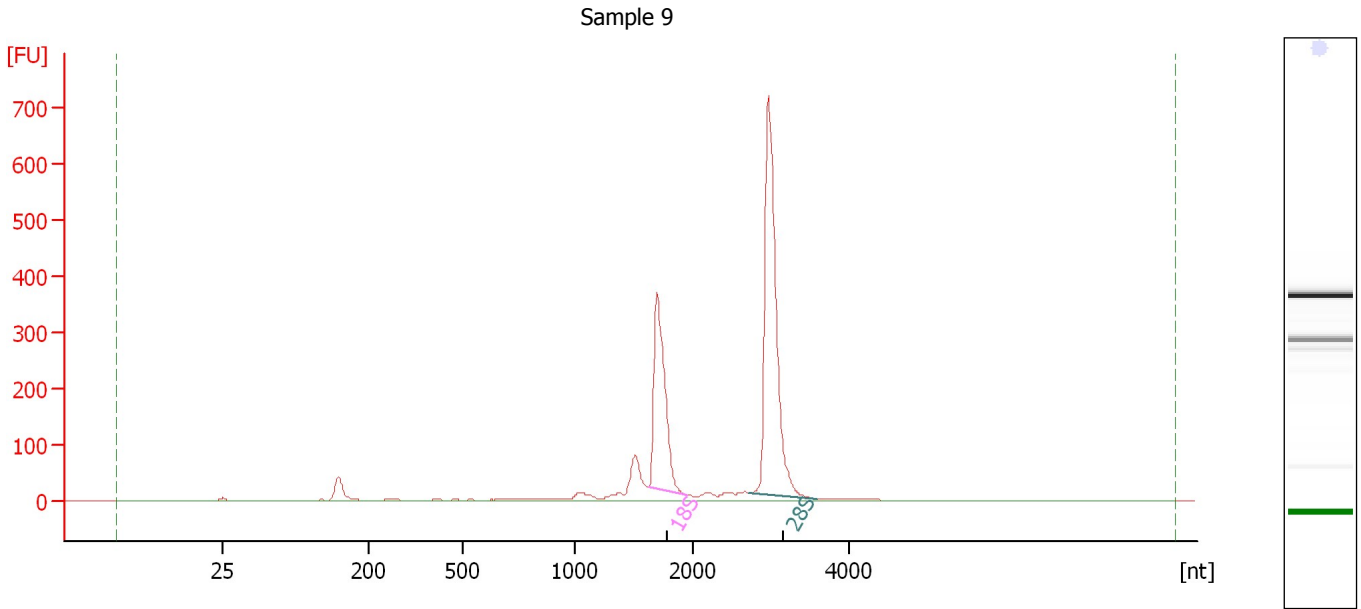
Fragment table for sample 8 : Sample 8

Name	Start Size [nt]	End Size [nt]	Area	% of total Area
18S	1,622	1,938	526.9	24.7
28S	2,766	3,585	975.5	45.8

Assay Class: Eukaryote Total RNA Nano
Data Path: C:\...ents and Settings\Bioanalyzer\2013-08-30\2013-08-30_002.xad

Created: 8/30/2013 2:30:18 PM
Modified: 8/30/2013 2:54:12 PM

Electropherogram Summary Continued ...



Overall Results for sample 9 : Sample 9

RNA Area:	1,891.5	RNA Integrity Number (RIN):	9.2 (B.02.08)
RNA Concentration:	1,188 ng/μl	Result Flagging Color:	
rRNA Ratio [28s / 18s]:	1.8	Result Flagging Label:	RIN: 9.20

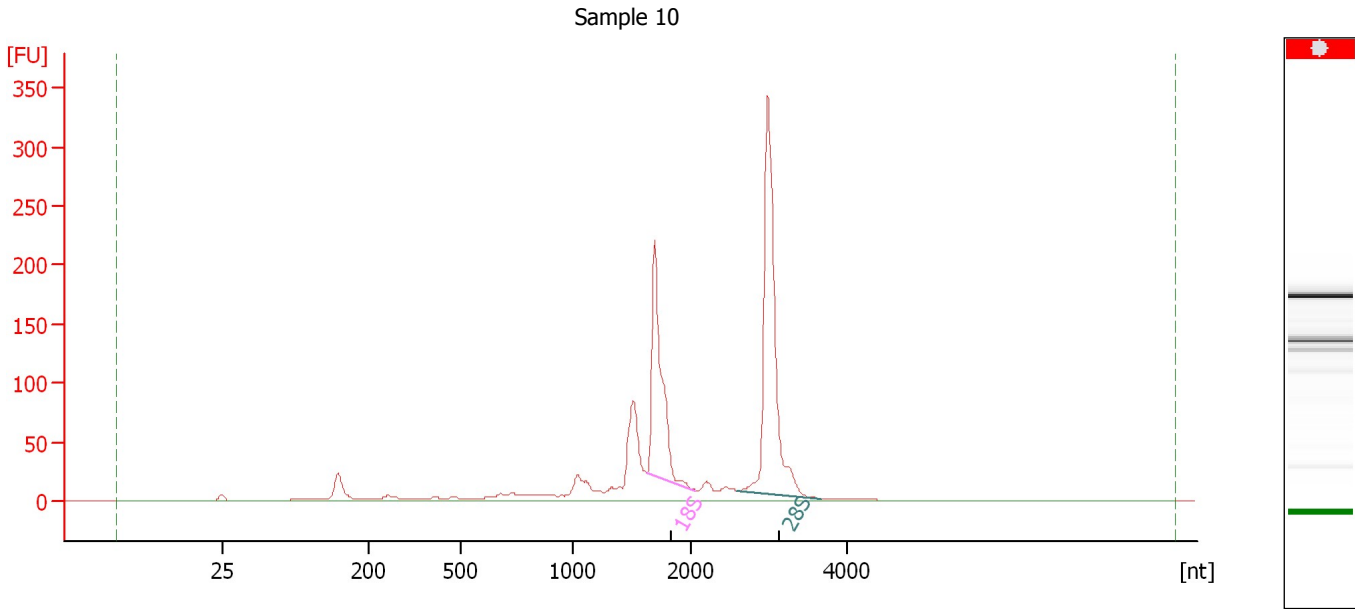
Fragment table for sample 9 : Sample 9

Name	Start Size [nt]	End Size [nt]	Area	% of total Area
18S	1,620	1,946	455.8	24.1
28S	2,726	3,600	835.9	44.2

Assay Class: Eukaryote Total RNA Nano
Data Path: C:\...ents and Settings\Bioanalyzer\2013-08-30\2013-08-30_002.xad

Created: 8/30/2013 2:30:18 PM
Modified: 8/30/2013 2:54:12 PM

Electropherogram Summary Continued ...



Overall Results for sample 10 : Sample 10

RNA Area:	1,148.5	RNA Integrity Number (RIN):	N/A (B.02.08)
RNA Concentration:	721 ng/μl	Result Flagging Color:	
rRNA Ratio [28s / 18s]:	1.7	Result Flagging Label:	RIN N/A

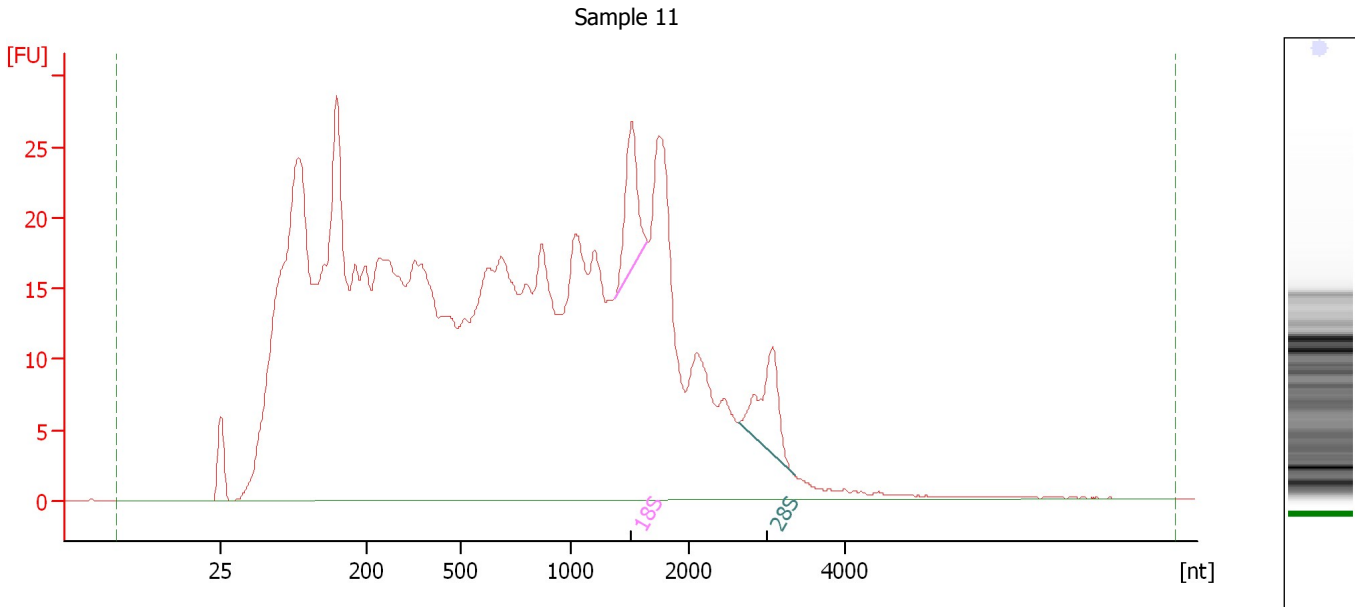
Fragment table for sample 10 : Sample 10

Name	Start Size [nt]	End Size [nt]	Area	% of total Area
18S	1,628	2,054	227.8	19.8
28S	2,602	3,657	383.6	33.4

Assay Class: Eukaryote Total RNA Nano
Data Path: C:\...ents and Settings\Bioanalyzer\2013-08-30\2013-08-30_002.xad

Created: 8/30/2013 2:30:18 PM
Modified: 8/30/2013 2:54:12 PM

Electropherogram Summary Continued ...



Overall Results for sample 11 : Sample 11

RNA Area:	1,010.4	RNA Integrity Number (RIN):	3 (B.02.08)
RNA Concentration:	635 ng/μl	Result Flagging Color:	
rRNA Ratio [28s / 18s]:	1.0	Result Flagging Label:	RIN:3

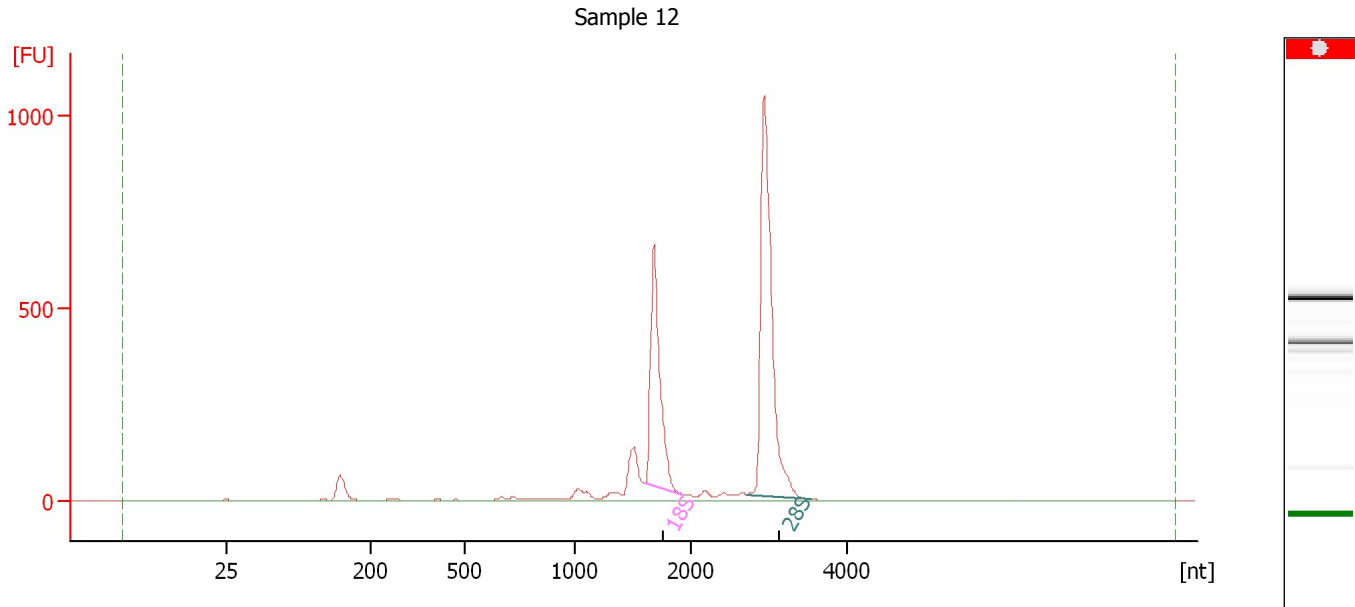
Fragment table for sample 11 : Sample 11

Name	Start Size [nt]	End Size [nt]	Area	% of total Area
18S	1,372	1,644	15.2	1.5
28S	2,643	3,357	14.9	1.5

Assay Class: Eukaryote Total RNA Nano
 Data Path: C:\...ents and Settings\Bioanalyzer\2013-08-30\2013-08-30_002.xad

Created: 8/30/2013 2:30:18 PM
 Modified: 8/30/2013 2:54:12 PM

Electropherogram Summary Continued ...



Overall Results for sample 12 : Sample 12

RNA Area:	2,771.4	RNA Integrity Number (RIN):	N/A (B.02.08)
RNA Concentration:	1,741 ng/μl	Result Flagging Color:	
rRNA Ratio [28s / 18s]:	1.8	Result Flagging Label:	RIN N/A

Fragment table for sample 12 : Sample 12

Name	Start Size [nt]	End Size [nt]	Area	% of total Area
18S	1,608	1,935	684.9	24.7
28S	2,712	3,536	1,226.9	44.3