

Assay Class: High Sensitivity DNA Assay
Data Path: C:\...ents and Settings\Bioanalyzer\2013-09-03\2013-09-03_003.xad

Created: 9/3/2013 2:00:42 PM
Modified: 9/3/2013 2:42:06 PM

Electrophoresis File Run Summary

Instrument Information:

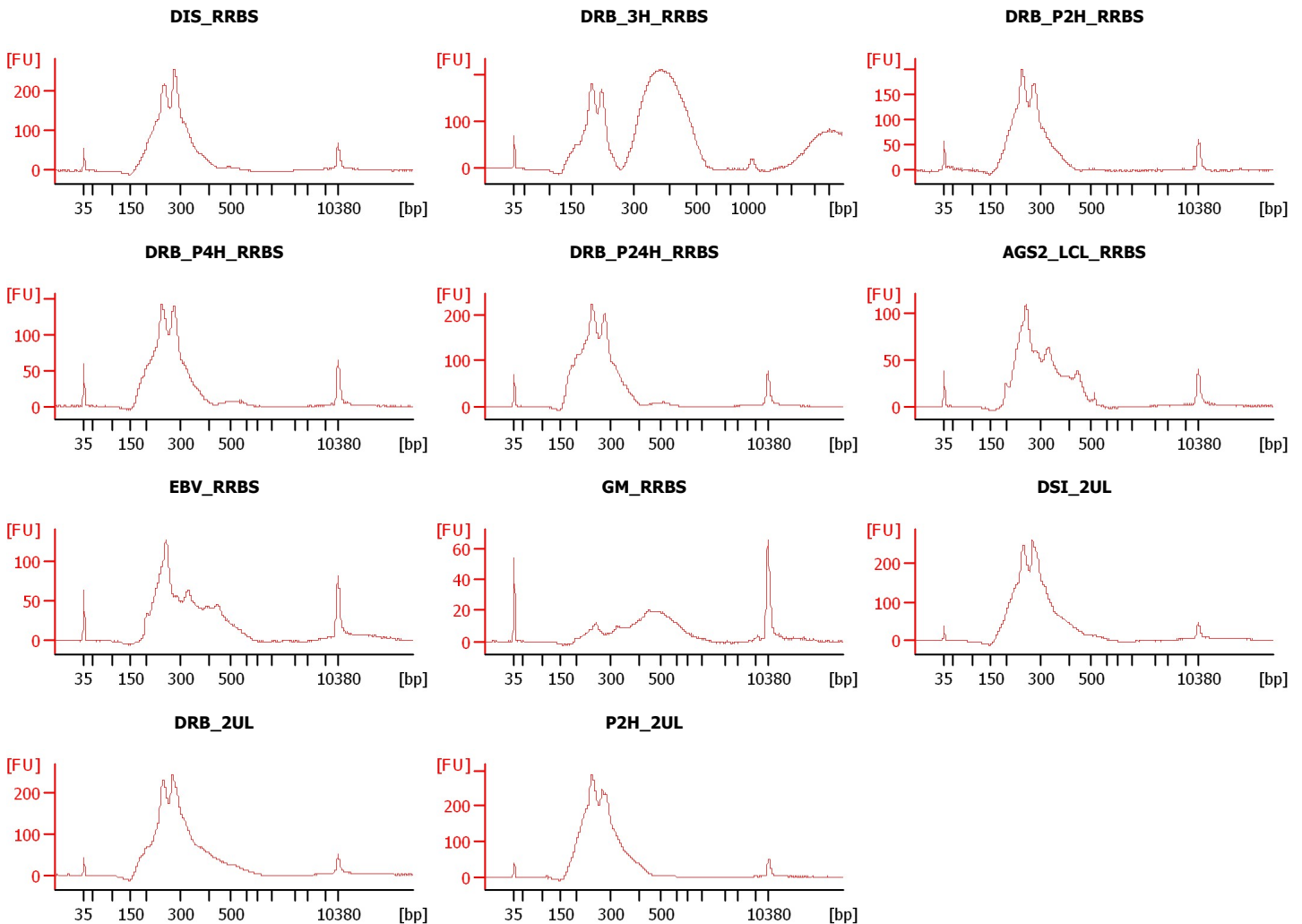
Instrument Name: DE13701086 Firmware: C.01.069
Serial#: DE13701086 Type: G2938B

Assay Information:

Assay Origin Path: C:\Program Files\Agilent\2100 bioanalyzer\2100 expert\assays\dsDNA\High Sensitivity DNA.xsy
Assay Class: High Sensitivity DNA Assay
Version: 1.03
Assay Comments: Copyright © 2003-2010 Agilent Technologies

Chip Information:

Chip Lot #:
Reagent Kit Lot #:
Chip Comments:



Assay Class: High Sensitivity DNA Assay
Data Path: C:\...ents and Settings\Bioanalyzer\2013-09-03\2013-09-03_003.xad

Created: 9/3/2013 2:00:42 PM
Modified: 9/3/2013 2:42:06 PM

Electrophoresis File Run Summary (Chip Summary)

Sample Name	Sample Comment	Rest. Digest	Status	Observation	Result Label	Result Color
DIS_RRBS		<input type="checkbox"/>	✓			
DRB_3H_RRBS		<input type="checkbox"/>	✓			
DRB_P2H_RRBS		<input type="checkbox"/>	✓			
DRB_P4H_RRBS		<input type="checkbox"/>	✓			
DRB_P24H_RRBS		<input type="checkbox"/>	✓			
AGS2_LCL_RRBS		<input type="checkbox"/>	✓			
EBV_RRBS		<input type="checkbox"/>	✓			
GM_RRBS		<input type="checkbox"/>	✓			
DSI_2UL		<input type="checkbox"/>	✓			
DRB_2UL		<input type="checkbox"/>	✓			
P2H_2UL		<input type="checkbox"/>	✓			
Ladder		<input type="checkbox"/>	✓			

Chip Lot #

Reagent Kit Lot #

Chip Comments :

Assay Class: High Sensitivity DNA Assay
Data Path: C:\...ents and Settings\Bioanalyzer\2013-09-03\2013-09-03_003.xad

Created: 9/3/2013 2:00:42 PM
Modified: 9/3/2013 2:42:06 PM

Electrophoresis Assay Details

General Analysis Settings

Number of Available Sample and Ladder Wells (Max.) : 12
Minimum Visible Range [s] : 32
Maximum Visible Range [s] : 138
Start Analysis Time Range [s] : 33
End Analysis Time Range [s] : 137.5
Ladder Concentration [pg/μl] : 1950
Uses Standard Area for Ladder Fragments
Lower Marker Concentration [pg/μl] : 125
Upper Marker Concentration [pg/μl] : 75
Used Upper Marker for Quantitation
Standard Curve Fit is Point to Point
Show Data Aligned to Lower and Upper Marker

Integrator Settings

Integration Start Time [s] : 33.05
Integration End Time [s] : 137
Slope Threshold : 0.8
Height Threshold [FU] : 5
Area Threshold : 0.1
Width Threshold [s] : 0.6
Baseline Plateau [s] : 0.5

Filter Settings

Filter Width [s] : 0.5
Polynomial Order : 4

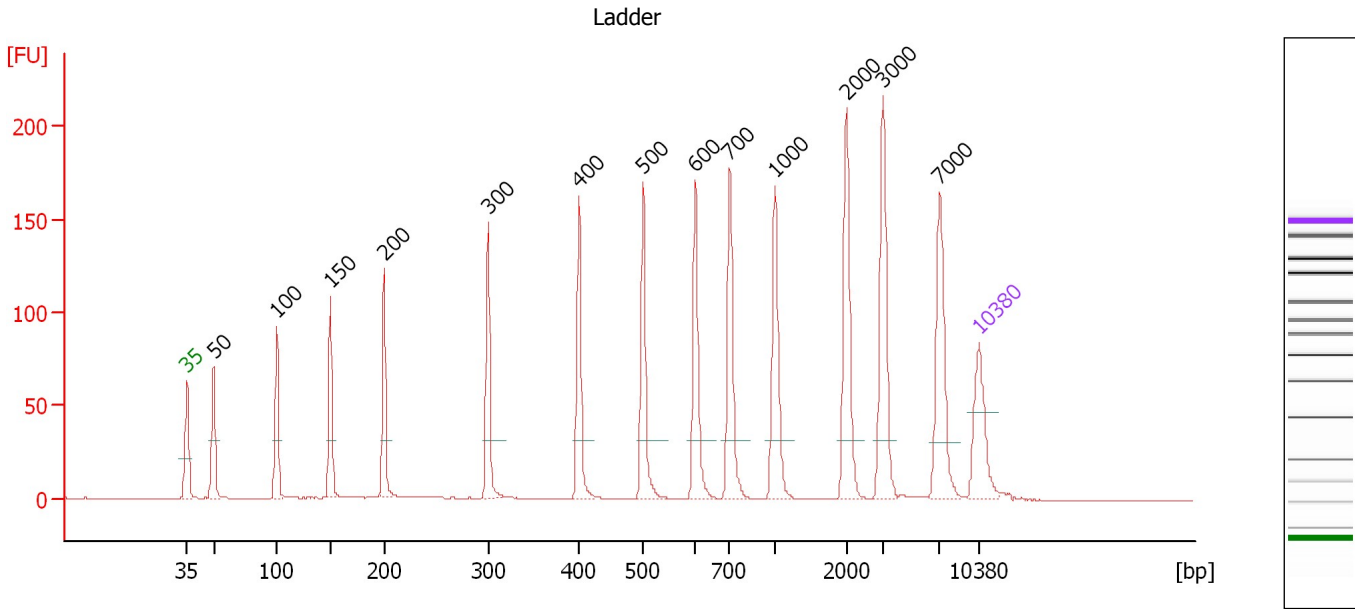
Ladder

Ladder Peak	Size	Area
1	35	160
2	50	210
3	100	208
4	150	221
5	200	242
6	300	270
7	400	305
8	500	306
9	600	336
10	700	321
11	1000	366
12	2000	413
13	3000	411
14	7000	400
15	10380	214

Assay Class: High Sensitivity DNA Assay
 Data Path: C:\...ents and Settings\Bioanalyzer\2013-09-03\2013-09-03_003.xad

Created: 9/3/2013 2:00:42 PM
 Modified: 9/3/2013 2:42:06 PM

Electropherogram Summary



Overall Results for Ladder

Noise: 0.1

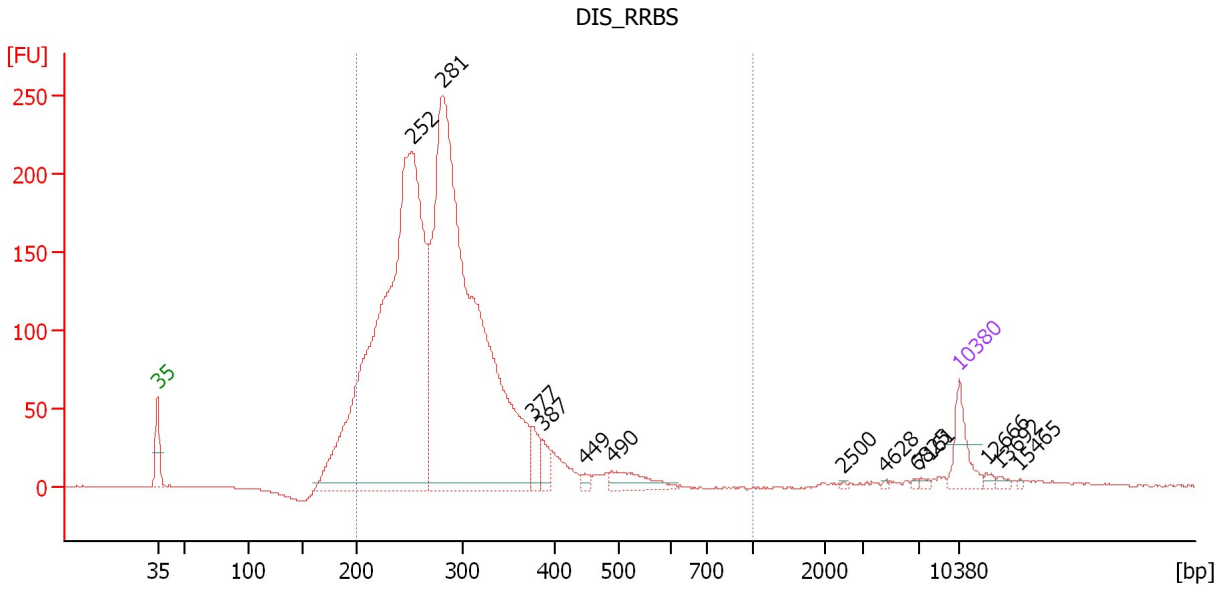
Peak table for Ladder

Peak	Size [bp]	Conc. [pg/μl]	Molarity [pmol/l]	Observations
1	35	125.00	5,411.3	Lower Marker
2	50	150.00	4,545.5	Ladder Peak
3	100	150.00	2,272.7	Ladder Peak
4	150	150.00	1,515.2	Ladder Peak
5	200	150.00	1,136.4	Ladder Peak
6	300	150.00	757.6	Ladder Peak
7	400	150.00	568.2	Ladder Peak
8	500	150.00	454.5	Ladder Peak
9	600	150.00	378.8	Ladder Peak
10	700	150.00	324.7	Ladder Peak
11	1,000	150.00	227.3	Ladder Peak
12	2,000	150.00	113.6	Ladder Peak
13	3,000	150.00	75.8	Ladder Peak
14	7,000	150.00	32.5	Ladder Peak
15	10,380	75.00	10.9	Upper Marker

Assay Class: High Sensitivity DNA Assay
 Data Path: C:\...ents and Settings\Bioanalyzer\2013-09-03\2013-09-03_003.xad

Created: 9/3/2013 2:00:42 PM
 Modified: 9/3/2013 2:42:06 PM

Electropherogram Summary Continued ...



Overall Results for sample 1 : DIS RRBS

Number of peaks found: 13 Corr. Area 1: 3,108.9
 Noise: 0.2

Peak table for sample 1 : DIS RRBS

Peak	Size [bp]	Conc. [pg/μl]	Molarity [pmol/l]	Observations
1	35	125.00	5,411.3	Lower Marker
2	252	2,620.40	15,740.9	
3	281	2,642.36	14,272.5	
4	377	69.49	279.0	
5	387	42.78	167.5	
6	449	16.19	54.6	
7	490	79.35	245.5	
8	2,500	3.27	2.0	
9	4,628	3.01	1.0	
10	6,825	4.22	0.9	
11	7,161	5.95	1.3	
12	10,380	75.00	10.9	Upper Marker
13	12,666	0.00	0.0	
14	13,692	0.00	0.0	
15	15,465	0.00	0.0	

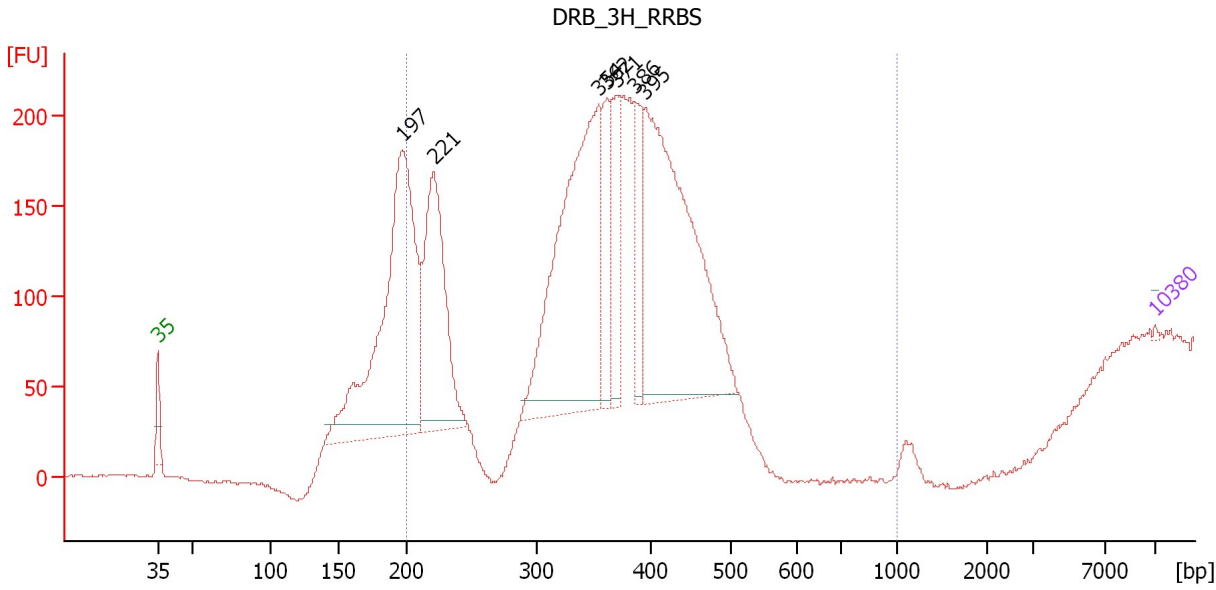
Region table for sample 1 : DIS RRBS

From [bp]	To [bp]	Average Size [bp]	Molarity [pmol/l]	Conc. [pg/μl]	Corr. Area	% of Total	Size distribution in CV [%]	Color
200	1,000	285	27,731.4	5,028.34	3,108.9	93	20.0	Blue

Assay Class: High Sensitivity DNA Assay
 Data Path: C:\...ents and Settings\Bioanalyzer\2013-09-03\2013-09-03_003.xad

Created: 9/3/2013 2:00:42 PM
 Modified: 9/3/2013 2:42:06 PM

Electropherogram Summary Continued ...



Overall Results for sample 2 : DRB_3H_RRBS

Number of peaks found: 7 Corr. Area 1: 3,441.2
 Noise: 0.6

Peak table for sample 2 : DRB_3H_RRBS

Peak	Size [bp]	Conc. [pg/μl]	Molarity [pmol/l]	Observations
1	35	125.00	5,411.3	Lower Marker
2	197	38,832.84	298,964.7	
3	221	20,940.54	143,457.6	
4	354	32,526.93	139,152.0	
5	362	6,225.28	26,080.7	
6	371	6,511.33	26,624.6	
7	386	5,739.69	22,530.4	
8	395	32,821.41	125,786.6	
9	10,380	75.00	10.9	Upper Marker

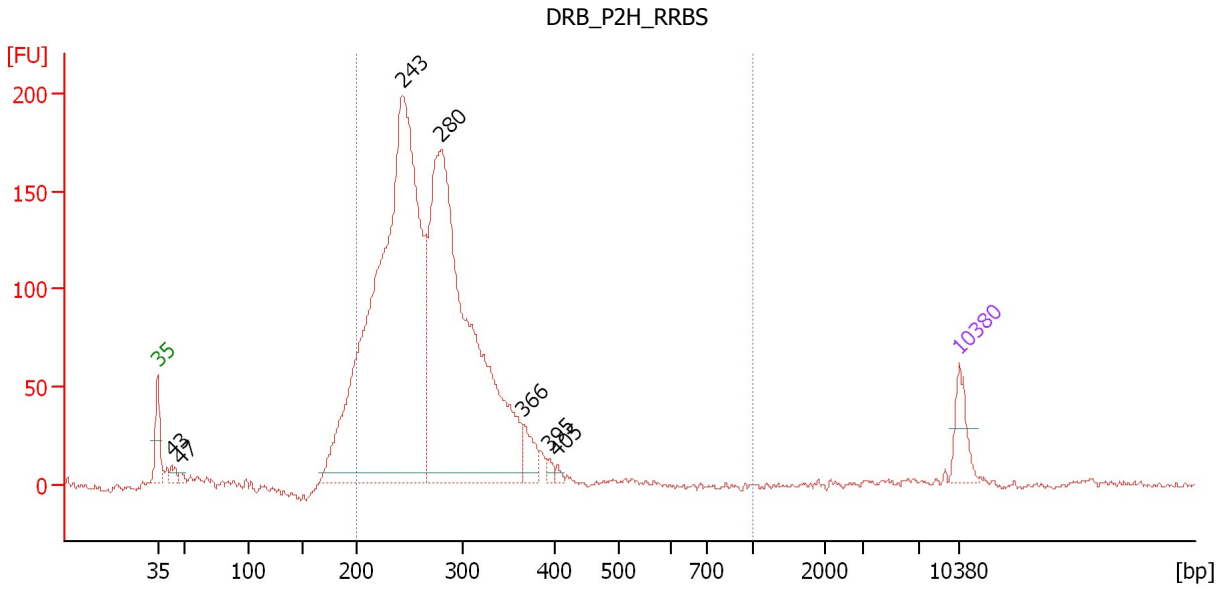
Region table for sample 2 : DRB_3H_RRBS

From [bp]	To [bp]	Average Size [bp]	Molarity [pmol/l]	Conc. [pg/μl]	Corr. Area	% of Total	Size distribution in CV [%]	Color
200	1,000	352	606,120.6	127,299.89	3,441.2	83	21.8	Blue

Assay Class: High Sensitivity DNA Assay
 Data Path: C:\...ents and Settings\Bioanalyzer\2013-09-03\2013-09-03_003.xad

Created: 9/3/2013 2:00:42 PM
 Modified: 9/3/2013 2:42:06 PM

Electropherogram Summary Continued ...



Overall Results for sample 3 : DRB P2H RRBS

Number of peaks found: 7 Corr. Area 1: 2,424.4
 Noise: 1.1

Peak table for sample 3 : DRB P2H RRBS

Peak	Size [bp]	Conc. [pg/μl]	Molarity [pmol/l]	Observations
1	35	125.00	5,411.3	Lower Marker
2	43	34.44	1,215.4	
3	47	16.06	513.9	
4	243	2,910.44	18,164.0	
5	280	2,121.77	11,496.6	
6	366	82.18	340.0	
7	395	17.35	66.6	
8	405	11.46	42.9	
9	10,380	75.00	10.9	Upper Marker

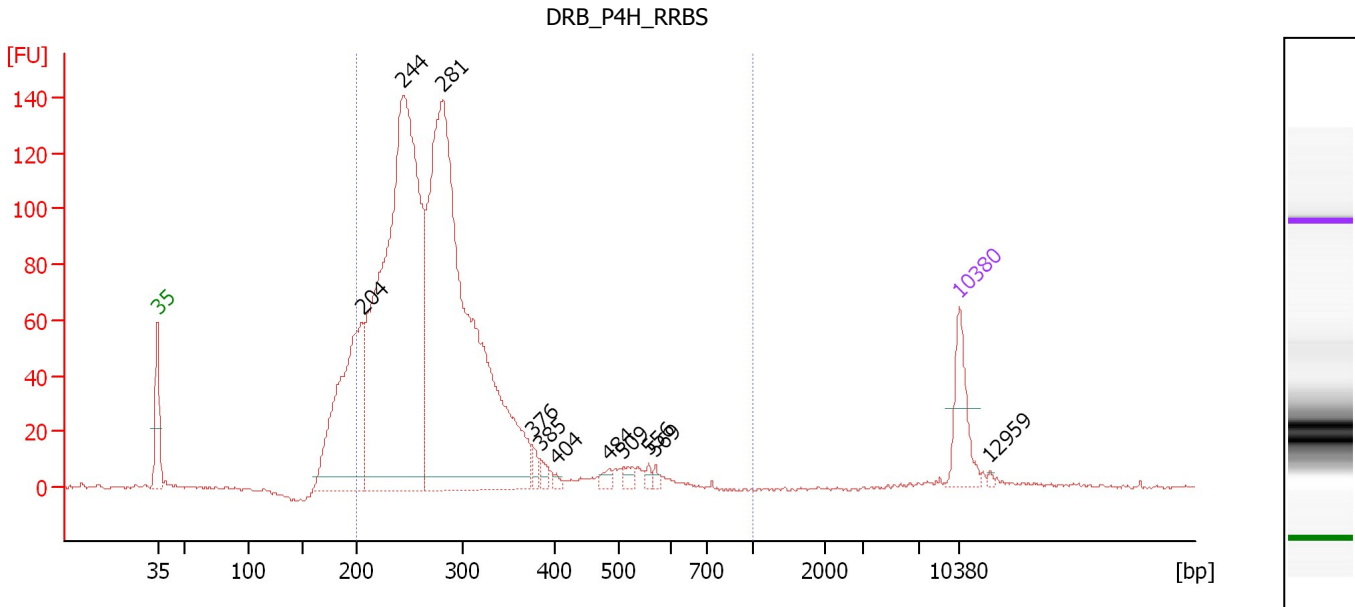
Region table for sample 3 : DRB P2H RRBS

From [bp]	To [bp]	Average Size [bp]	Molarity [pmol/l]	Conc. [pg/μl]	Corr. Area	% of Total	Size distribution in CV [%]	Color
200	1,000	274	27,897.4	4,901.24	2,424.4	90	18.3	Blue

Assay Class: High Sensitivity DNA Assay
 Data Path: C:\...ents and Settings\Bioanalyzer\2013-09-03\2013-09-03_003.xad

Created: 9/3/2013 2:00:42 PM
 Modified: 9/3/2013 2:42:06 PM

Electropherogram Summary Continued ...



Overall Results for sample 4 : DRB P4H RRBS

Number of peaks found: 11 Corr. Area 1: 1,828.3
 Noise: 0.6

Peak table for sample 4 : DRB P4H RRBS

Peak	Size [bp]	Conc. [pg/μl]	Molarity [pmol/l]	Observations
1	35	125.00	5,411.3	Lower Marker
2	204	496.17	3,681.8	
3	244	1,513.94	9,419.7	
4	281	1,572.28	8,471.4	
5	376	18.78	75.6	
6	385	15.20	59.8	
7	404	7.33	27.5	
8	484	13.13	41.1	
9	509	16.95	50.5	
10	556	8.26	22.5	
11	569	7.98	21.3	
12	10,380	75.00	10.9	Upper Marker
13	12,959	0.00	0.0	

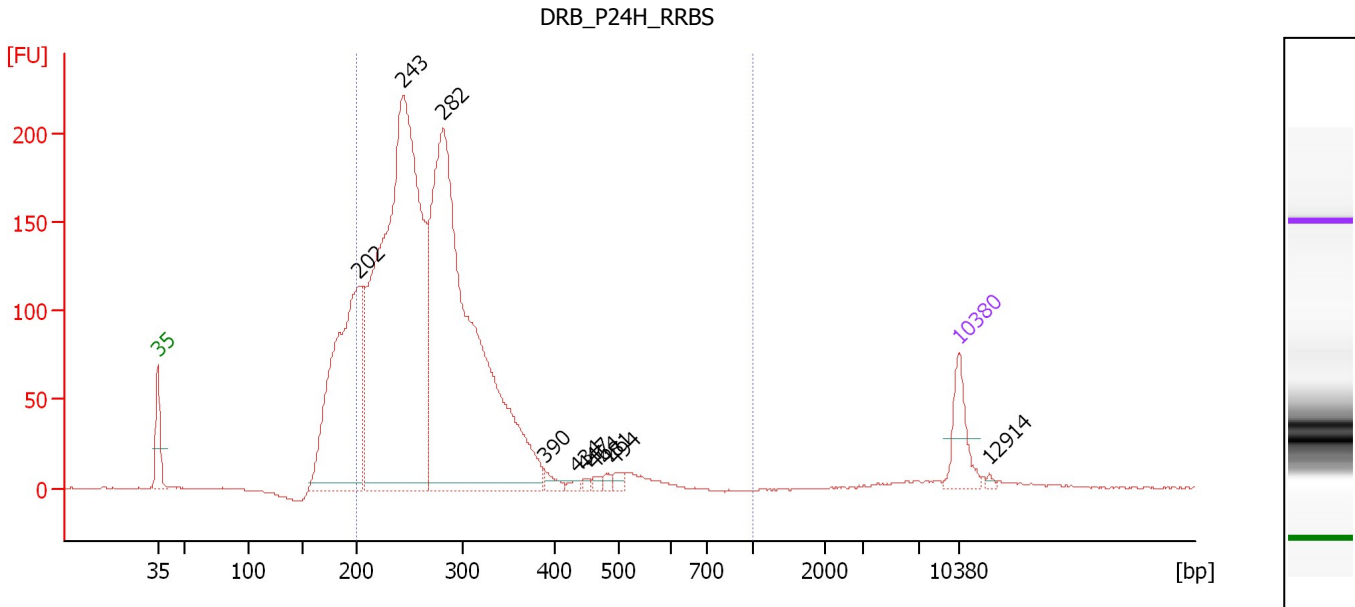
Region table for sample 4 : DRB P4H RRBS

From [bp]	To [bp]	Average Size [bp]	Molarity [pmol/l]	Conc. [pg/μl]	Corr. Area	% of Total	Size distribution in CV [%]	Color
200	1,000	281	18,345.6	3,256.48	1,828.3	89	23.1	Blue

Assay Class: High Sensitivity DNA Assay
 Data Path: C:\...ents and Settings\Bioanalyzer\2013-09-03\2013-09-03_003.xad

Created: 9/3/2013 2:00:42 PM
 Modified: 9/3/2013 2:42:06 PM

Electropherogram Summary Continued ...



Overall Results for sample 5 : DRB P24H RRBS

Number of peaks found: 10 Corr. Area 1: 2,845.3
 Noise: 0.3

Peak table for sample 5 : DRB P24H RRBS

Peak	Size [bp]	Conc. [pg/µl]	Molarity [pmol/l]	Observations
1	35	125.00	5,411.3	Lower Marker
2	202	824.10	6,189.7	
3	243	1,993.25	12,412.8	
4	282	1,767.34	9,490.8	
5	390	19.02	73.9	
6	434	9.60	33.5	
7	447	6.34	21.5	
8	464	9.17	29.9	
9	481	10.83	34.1	
10	494	14.94	45.8	
11	10,380	75.00	10.9	Upper Marker
12	12,914	0.00	0.0	

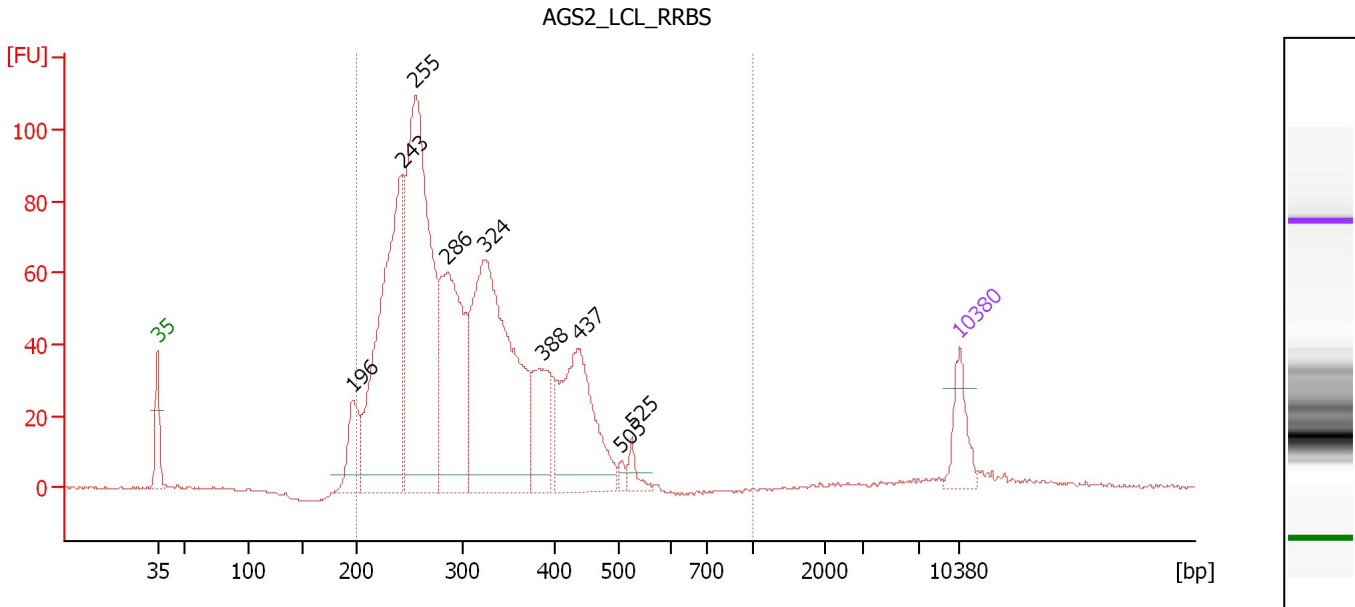
Region table for sample 5 : DRB P24H RRBS

From [bp]	To [bp]	Average Size [bp]	Molarity [pmol/l]	Conc. [pg/µl]	Corr. Area	% of Total	Size distribution in CV [%]	Color
200	1,000	275	22,230.7	3,897.20	2,845.3	85	20.6	Blue

Assay Class: High Sensitivity DNA Assay
 Data Path: C:\...ents and Settings\Bioanalyzer\2013-09-03\2013-09-03_003.xad

Created: 9/3/2013 2:00:42 PM
 Modified: 9/3/2013 2:42:06 PM

Electropherogram Summary Continued ...



Overall Results for sample 6 : AGS2_LCL_RRBS

Number of peaks found: 9 Corr. Area 1: 1,567.8
 Noise: 0.2

Peak table for sample 6 : AGS2_LCL_RRBS

Peak	Size [bp]	Conc. [pg/μl]	Molarity [pmol/l]	Observations
1	35	125.00	5,411.3	Lower Marker
2	196	145.26	1,124.6	
3	243	874.24	5,454.8	
4	255	1,063.10	6,304.9	
5	286	550.75	2,920.6	
6	324	921.69	4,310.5	
7	388	181.81	710.6	
8	437	394.25	1,366.8	
9	505	15.46	46.4	
10	525	32.60	94.1	
11	10,380	75.00	10.9	Upper Marker

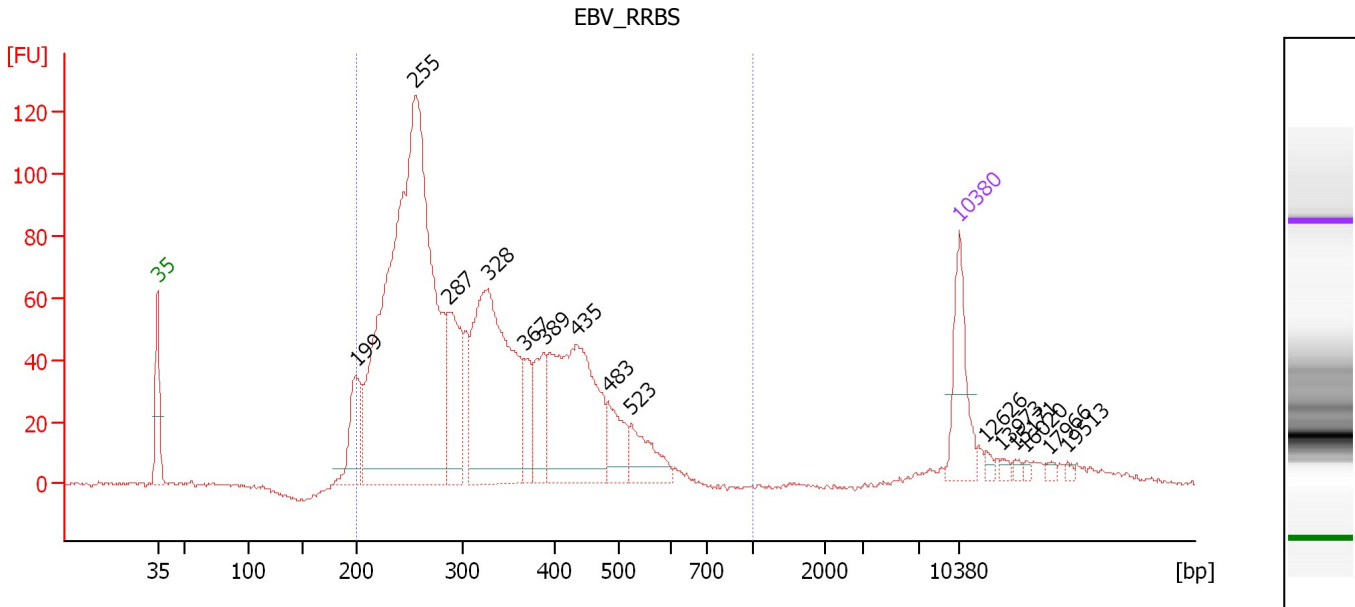
Region table for sample 6 : AGS2_LCL_RRBS

From [bp]	To [bp]	Average Size [bp]	Molarity [pmol/l]	Conc. [pg/μl]	Corr. Area	% of Total	Size distribution in CV [%]	Color
200	1,000	309	21,242.0	4,050.58	1,567.8	96	23.7	Blue

Assay Class: High Sensitivity DNA Assay
 Data Path: C:\...ents and Settings\Bioanalyzer\2013-09-03\2013-09-03_003.xad

Created: 9/3/2013 2:00:42 PM
 Modified: 9/3/2013 2:42:06 PM

Electropherogram Summary Continued ...



Overall Results for sample 7 : EBV_RRBS

Number of peaks found: 15 Corr. Area 1: 1,793.4
 Noise: 0.5

Peak table for sample 7 : EBV_RRBS

Peak	Size [bp]	Conc. [pg/μl]	Molarity [pmol/l]	Observations
1	35	125.00	5,411.3	Lower Marker
2	199	96.01	732.5	
3	255	1,169.84	6,947.6	
4	287	162.02	855.2	
5	328	435.24	2,013.1	
6	367	47.31	195.1	
7	389	75.29	293.0	
8	435	302.22	1,052.9	
9	483	59.82	187.6	
10	523	63.33	183.5	
11	10,380	75.00	10.9	Upper Marker
12	12,626	0.00	0.0	
13	13,973	0.00	0.0	
14	15,171	0.00	0.0	
15	16,020	0.00	0.0	
16	17,966	0.00	0.0	
17	19,513	0.00	0.0	

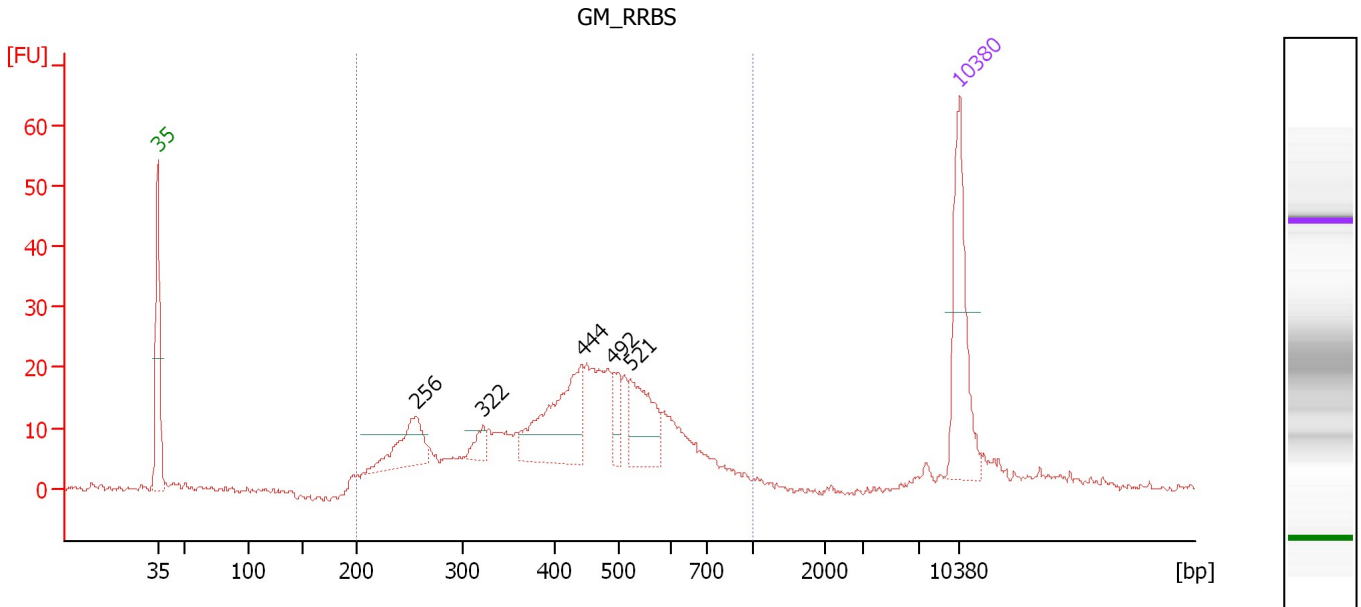
Region table for sample 7 : EBV_RRBS

From [bp]	To [bp]	Average Size [bp]	Molarity [pmol/l]	Conc. [pg/μl]	Corr. Area	% of Total	Size distribution in CV [%]	Color
200	1,000	325	12,317.2	2,399.84	1,793.4	94	27.9	Blue

Assay Class: High Sensitivity DNA Assay
 Data Path: C:\...ents and Settings\Bioanalyzer\2013-09-03\2013-09-03_003.xad

Created: 9/3/2013 2:00:42 PM
 Modified: 9/3/2013 2:42:06 PM

Electropherogram Summary Continued ...



Overall Results for sample 8 : GM_RRBS

Number of peaks found: 5 Corr. Area 1: 443.9
 Noise: 0.5

Peak table for sample 8 : GM_RRBS

Peak	Size [bp]	Conc. [pg/μl]	Molarity [pmol/l]	Observations
1	35	125.00	5,411.3	Lower Marker
2	256	57.32	339.3	
3	322	14.11	66.4	
4	444	102.48	349.8	
5	492	21.36	65.8	
6	521	59.22	172.2	
7	10,380	75.00	10.9	Upper Marker

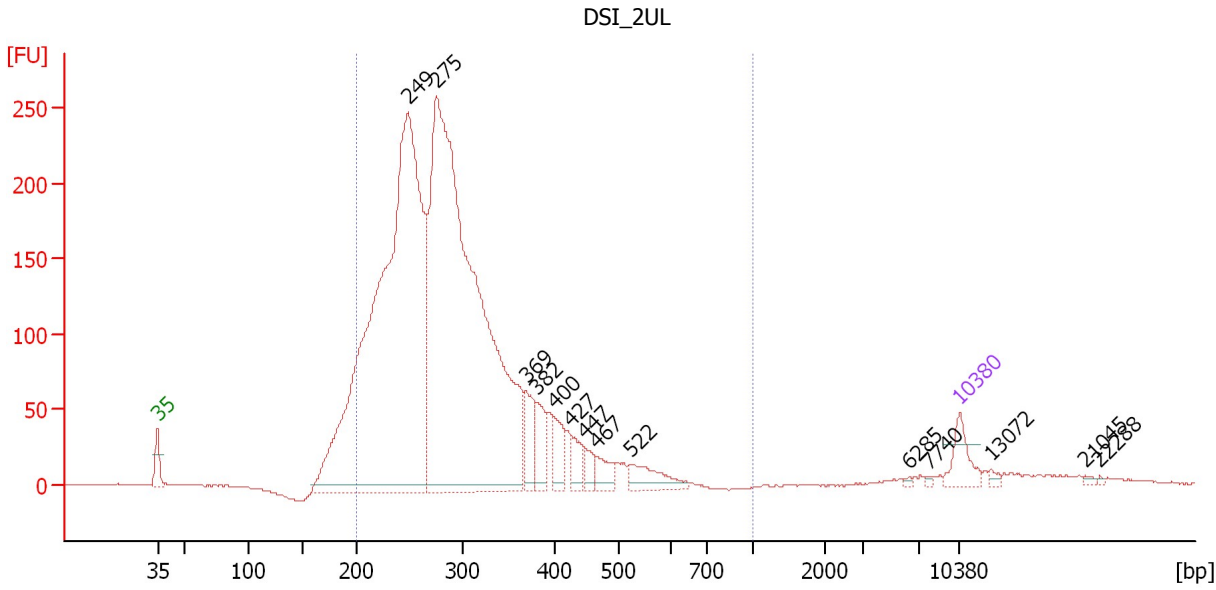
Region table for sample 8 : GM_RRBS

From [bp]	To [bp]	Average Size [bp]	Molarity [pmol/l]	Conc. [pg/μl]	Corr. Area	% of Total	Size distribution in CV [%]	Color
200	1,000	445	2,743.9	693.64	443.9	91	31.0	Blue

Assay Class: High Sensitivity DNA Assay
 Data Path: C:\...ents and Settings\Bioanalyzer\2013-09-03\2013-09-03_003.xad

Created: 9/3/2013 2:00:42 PM
 Modified: 9/3/2013 2:42:06 PM

Electropherogram Summary Continued ...



Overall Results for sample 9 : DSI_2UL

Number of peaks found: 14 Corr. Area 1: 3,624.9
 Noise: 0.4

Peak table for sample 9 : DSI_2UL

Peak	Size [bp]	Conc. [pg/μl]	Molarity [pmol/l]	Observations
1	35	125.00	5,411.3	Lower Marker
2	249	3,426.61	20,886.0	
3	275	3,373.94	18,567.7	
4	369	139.84	574.1	
5	382	113.97	452.4	
6	400	89.68	339.9	
7	427	70.68	250.8	
8	447	46.49	157.6	
9	467	63.53	206.3	
10	522	109.16	317.1	
11	6,285	5.48	1.3	
12	7,740	6.15	1.2	
13	10,380	75.00	10.9	Upper Marker
14	13,072	0.00	0.0	
15	21,045	0.00	0.0	
16	22,288	0.00	0.0	

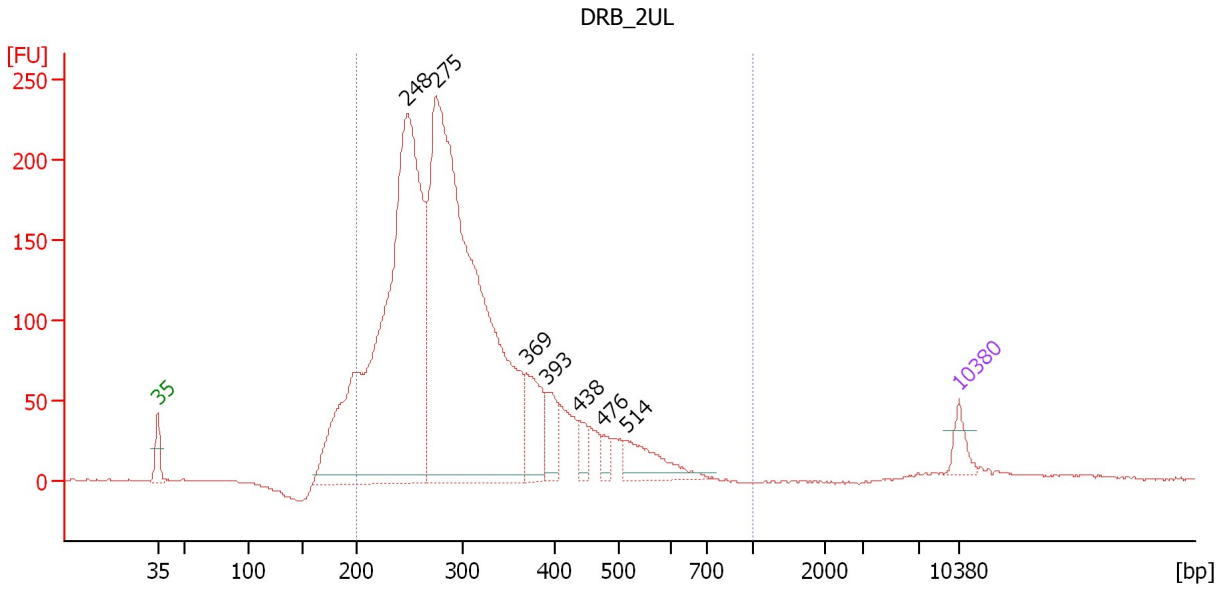
Region table for sample 9 : DSI_2UL

From [bp]	To [bp]	Average Size [bp]	Molarity [pmol/l]	Conc. [pg/μl]	Corr. Area	% of Total	Size distribution in CV [%]	Color
200	1,000	294	36,425.6	6,705.42	3,624.9	92	23.3	Blue

Assay Class: High Sensitivity DNA Assay
 Data Path: C:\...ents and Settings\Bioanalyzer\2013-09-03\2013-09-03_003.xad

Created: 9/3/2013 2:00:42 PM
 Modified: 9/3/2013 2:42:06 PM

Electropherogram Summary Continued ...



Overall Results for sample 10 : DRB_2UL

Number of peaks found: 7 Corr. Area 1: 3,447.5
 Noise: 0.5

Peak table for sample 10 : DRB_2UL

Peak	Size [bp]	Conc. [pg/μl]	Molarity [pmol/l]	Observations
1	35	125.00	5,411.3	Lower Marker
2	248	3,990.49	24,409.9	
3	275	4,407.50	24,289.7	
4	369	317.98	1,305.5	
5	393	190.90	736.3	
6	438	85.58	296.1	
7	476	55.39	176.2	
8	514	244.60	721.7	
9	10,380	75.00	10.9	Upper Marker

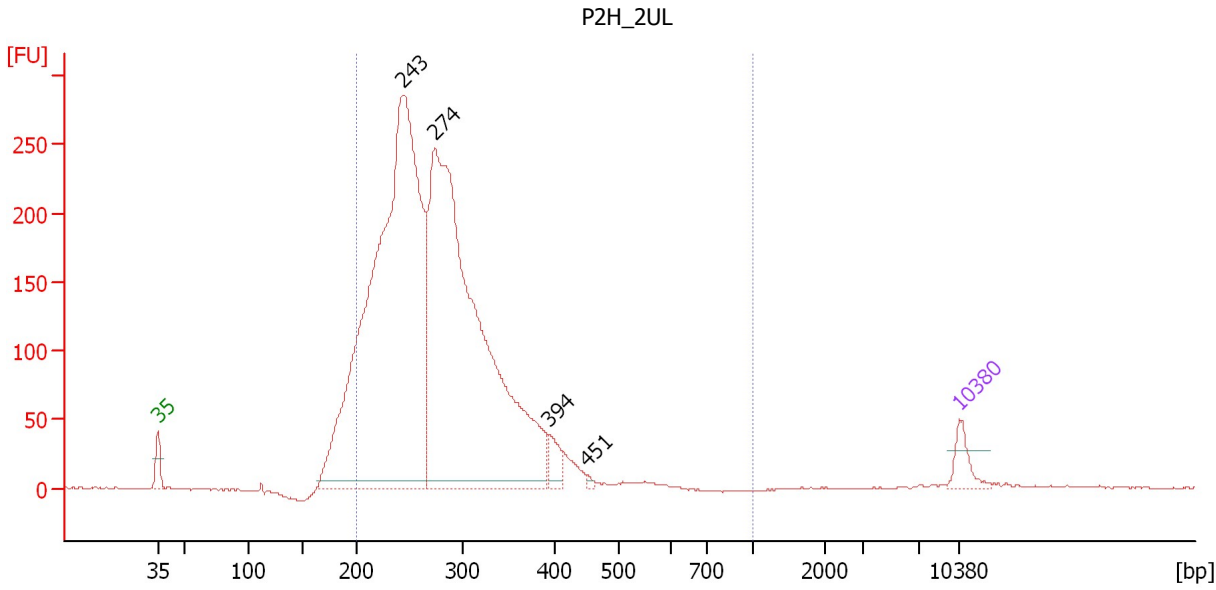
Region table for sample 10 : DRB_2UL

From [bp]	To [bp]	Average Size [bp]	Molarity [pmol/l]	Conc. [pg/μl]	Corr. Area	% of Total	Size distribution in CV [%]	Color
200	1,000	308	46,049.8	8,732.46	3,447.5	93	26.5	Blue

Assay Class: High Sensitivity DNA Assay
 Data Path: C:\...ents and Settings\Bioanalyzer\2013-09-03\2013-09-03_003.xad

Created: 9/3/2013 2:00:42 PM
 Modified: 9/3/2013 2:42:06 PM

Electropherogram Summary Continued ...



Overall Results for sample 11 : P2H_2UL

Number of peaks found: 4 Corr. Area 1: 3,745.7
 Noise: 0.6

Peak table for sample 11 : P2H_2UL

Peak	Size [bp]	Conc. [pg/μl]	Molarity [pmol/l]	Observations
1	35	125.00	5,411.3	Lower Marker
2	243	4,398.02	27,420.0	
3	274	3,769.09	20,865.2	
4	394	95.47	367.1	
5	451	11.45	38.5	
6	10,380	75.00	10.9	Upper Marker

Region table for sample 11 : P2H_2UL

From [bp]	To [bp]	Average Size [bp]	Molarity [pmol/l]	Conc. [pg/μl]	Corr. Area	% of Total	Size distribution in CV [%]	Color
200	1,000	280	43,171.0	7,686.40	3,745.7	93	19.7	Blue