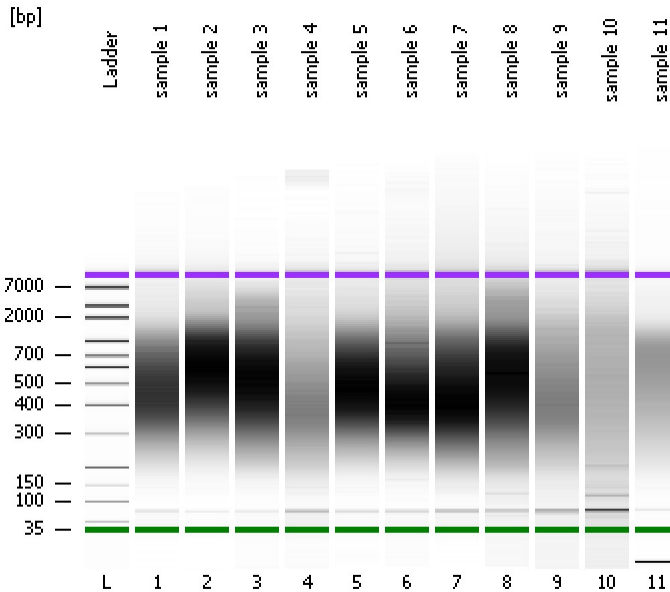


Assay Class: High Sensitivity DNA Assay  
Data Path: C:\...ents and Settings\Bioanalyzer\2013-09-05\2013-09-05\_002.xad

Created: 9/5/2013 1:23:15 PM  
Modified: 9/5/2013 2:04:36 PM

### Electrophoresis File Run Summary



#### Instrument Information:

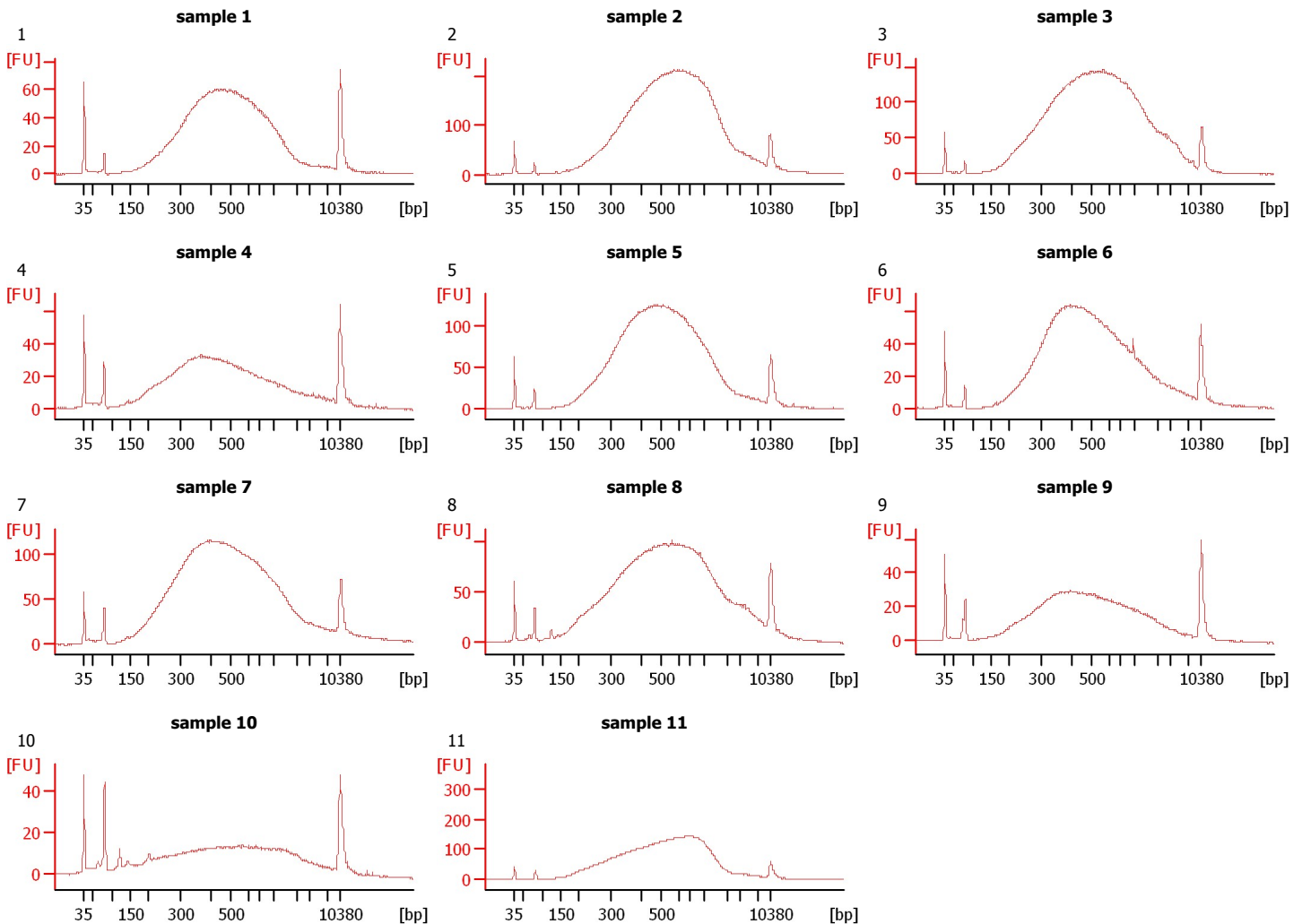
Instrument Name: DE13701086      Firmware: C.01.069  
Serial#: DE13701086      Type: G2938B

#### Assay Information:

Assay Origin Path: C:\Program Files\Agilent\2100 bioanalyzer\2100 expert\assays\dsDNA\High Sensitivity DNA.xsy  
Assay Class: High Sensitivity DNA Assay  
Version: 1.03  
Assay Comments: Copyright © 2003-2010 Agilent Technologies

#### Chip Information:

Chip Lot #:   
Reagent Kit Lot #:   
Chip Comments:



Assay Class: High Sensitivity DNA Assay  
Data Path: C:\...ents and Settings\Bioanalyzer\2013-09-05\2013-09-05\_002.xad

Created: 9/5/2013 1:23:15 PM  
Modified: 9/5/2013 2:04:36 PM

**Electrophoresis File Run Summary (Chip Summary)**

Sample Name	Sample Comment	Rest. Digest	Status	Observation	Result Label	Result Color
sample 1	1	<input type="checkbox"/>	✓			
sample 2	2	<input type="checkbox"/>	✓			
sample 3	3	<input type="checkbox"/>	✓			
sample 4	4	<input type="checkbox"/>	✓			
sample 5	5	<input type="checkbox"/>	✓			
sample 6	6	<input type="checkbox"/>	✓			
sample 7	7	<input type="checkbox"/>	✓			
sample 8	8	<input type="checkbox"/>	✓			
sample 9	9	<input type="checkbox"/>	✓			
sample 10	10	<input type="checkbox"/>	✓			
sample 11	11	<input type="checkbox"/>	✓			
Ladder		<input type="checkbox"/>	✓			

Chip Lot #

Reagent Kit Lot #

Chip Comments :

Assay Class: High Sensitivity DNA Assay  
Data Path: C:\...ents and Settings\Bioanalyzer\2013-09-05\2013-09-05\_002.xad

Created: 9/5/2013 1:23:15 PM  
Modified: 9/5/2013 2:04:36 PM

**Electrophoresis Assay Details**

**General Analysis Settings**

Number of Available Sample and Ladder Wells (Max.) : 12  
Minimum Visible Range [s] : 32  
Maximum Visible Range [s] : 138  
Start Analysis Time Range [s] : 33  
End Analysis Time Range [s] : 137.5  
Ladder Concentration [pg/μl] : 1950  
Uses Standard Area for Ladder Fragments  
Lower Marker Concentration [pg/μl] : 125  
Upper Marker Concentration [pg/μl] : 75  
Used Upper Marker for Quantitation  
Standard Curve Fit is Point to Point  
Show Data Aligned to Lower and Upper Marker

**Integrator Settings**

Integration Start Time [s] : 33.05  
Integration End Time [s] : 137  
Slope Threshold : 0.8  
Height Threshold [FU] : 5  
Area Threshold : 0.1  
Width Threshold [s] : 0.6  
Baseline Plateau [s] : 0.5

**Filter Settings**

Filter Width [s] : 0.5  
Polynomial Order : 4

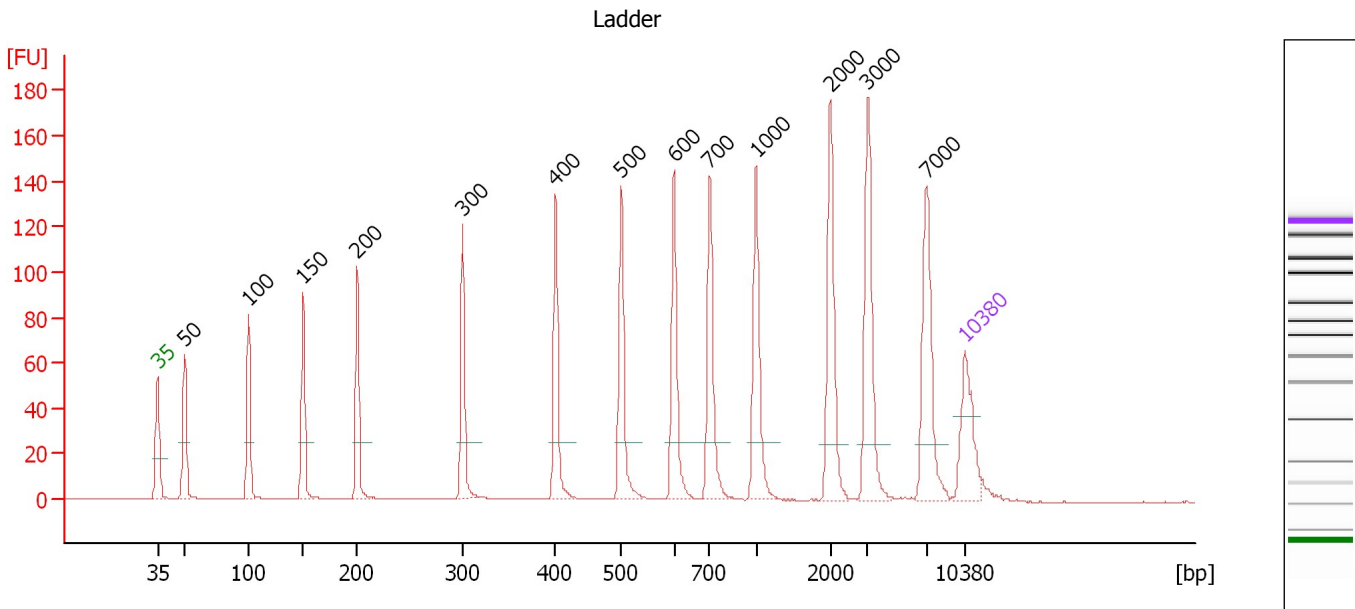
**Ladder**

Ladder Peak	Size	Area
1	35	160
2	50	210
3	100	208
4	150	221
5	200	242
6	300	270
7	400	305
8	500	306
9	600	336
10	700	321
11	1000	366
12	2000	413
13	3000	411
14	7000	400
15	10380	214

Assay Class: High Sensitivity DNA Assay  
 Data Path: C:\...ents and Settings\Bioanalyzer\2013-09-05\2013-09-05\_002.xad

Created: 9/5/2013 1:23:15 PM  
 Modified: 9/5/2013 2:04:36 PM

**Electropherogram Summary**



**Overall Results for Ladder**

Noise: 0.1

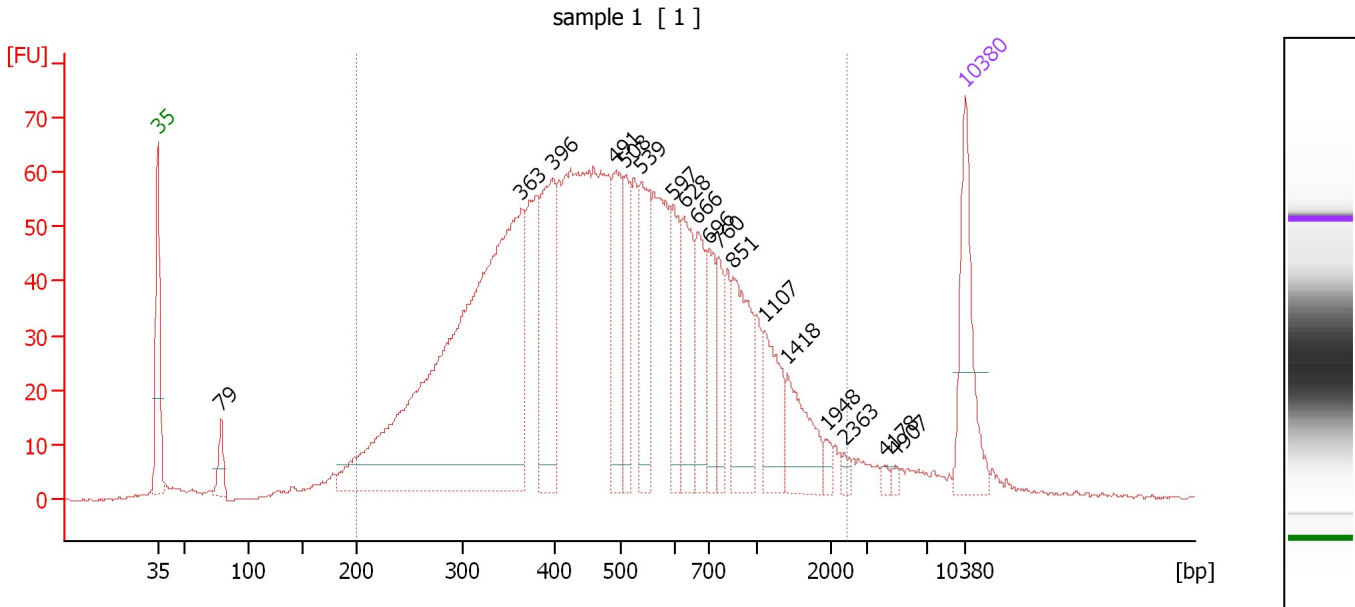
**Peak table for Ladder**

Peak	Size [bp]	Conc. [pg/μl]	Molarity [pmol/l]	Observations
1	35	125.00	5,411.3	Lower Marker
2	50	150.00	4,545.5	Ladder Peak
3	100	150.00	2,272.7	Ladder Peak
4	150	150.00	1,515.2	Ladder Peak
5	200	150.00	1,136.4	Ladder Peak
6	300	150.00	757.6	Ladder Peak
7	400	150.00	568.2	Ladder Peak
8	500	150.00	454.5	Ladder Peak
9	600	150.00	378.8	Ladder Peak
10	700	150.00	324.7	Ladder Peak
11	1,000	150.00	227.3	Ladder Peak
12	2,000	150.00	113.6	Ladder Peak
13	3,000	150.00	75.8	Ladder Peak
14	7,000	150.00	32.5	Ladder Peak
15	10,380	75.00	10.9	Upper Marker

Assay Class: High Sensitivity DNA Assay  
 Data Path: C:\...ents and Settings\Bioanalyzer\2013-09-05\2013-09-05\_002.xad

Created: 9/5/2013 1:23:15 PM  
 Modified: 9/5/2013 2:04:36 PM

**Electropherogram Summary Continued ...**



**Overall Results for sample 1 : sample 1**

Number of peaks found: 18      Corr. Area 1: 2,027.0  
 Noise: 0.2

**Peak table for sample 1 : sample 1**

Peak	Size [bp]	Conc. [pg/μl]	Molarity [pmol/l]	Observations
1	35	125.00	5,411.3	Lower Marker
2	79	29.76	573.4	
3	363	763.49	3,188.2	
4	396	145.77	557.7	
5	491	97.98	302.5	
6	508	58.78	175.4	
7	539	100.51	282.8	
8	597	63.55	161.3	
9	628	80.68	194.5	
10	666	64.06	145.7	
11	696	54.63	118.9	
12	760	36.46	72.7	
13	851	91.90	163.6	
14	1,107	55.75	76.3	
15	1,418	55.72	59.5	
16	1,948	7.49	5.8	
17	2,363	5.25	3.4	
18	4,178	3.45	1.3	
19	4,907	3.56	1.1	
20	10,380	75.00	10.9	Upper Marker

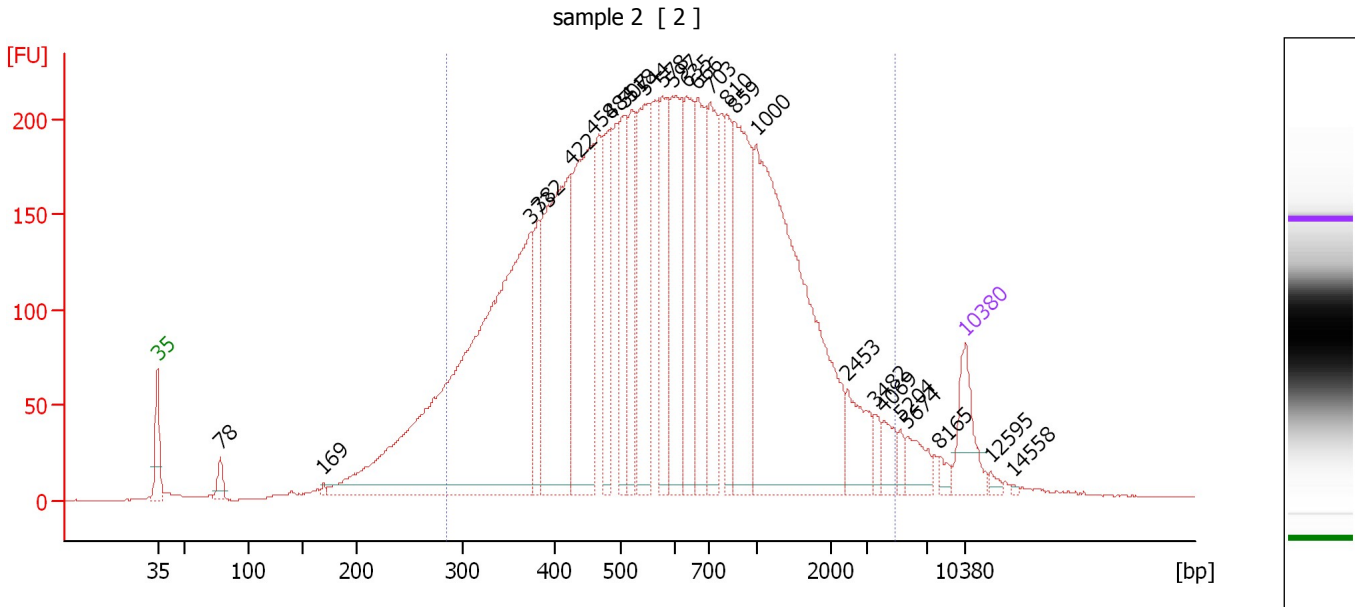
**Region table for sample 1 : sample 1**

From [bp]	To [bp]	Average Size [bp]	Molarity [pmol/l]	Conc. [pg/μl]	Corr. Area	% of Total	Size distribution in CV [%]	Color
200	2,468	571	9,749.2	2,726.19	2,027.0	93	60.0	Blue

Assay Class: High Sensitivity DNA Assay  
 Data Path: C:\...ents and Settings\Bioanalyzer\2013-09-05\2013-09-05\_002.xad

Created: 9/5/2013 1:23:15 PM  
 Modified: 9/5/2013 2:04:36 PM

**Electropherogram Summary Continued ...**



**Overall Results for sample 2 : sample 2**

Number of peaks found: 26                      Corr. Area 1: 6,561.0  
 Noise: 0.3

**Peak table for sample 2 : sample 2**

Peak	Size [bp]	Conc. [pg/μl]	Molarity [pmol/l]	Observations
1	35	125.00	5,411.3	Lower Marker
2	78	36.61	712.6	
3	169	5.85	52.6	
4	373	1,340.28	5,443.3	
5	382	122.16	484.9	
6	422	530.97	1,905.7	
7	458	443.21	1,465.6	
8	484	170.82	535.1	
9	507	173.68	519.1	
10	518	150.20	439.6	
11	544	259.30	722.6	
12	578	197.38	517.1	
13	597	267.31	678.8	
14	635	191.52	456.8	
15	666	221.53	504.2	
16	703	198.14	427.3	
17	810	143.33	268.0	
18	859	320.73	566.0	
19	1,000	824.69	1,249.9	
20	2,453	80.23	49.6	
21	3,482	19.97	8.7	
22	4,069	35.63	13.3	
23	5,204	14.66	4.3	
24	5,674	43.22	11.5	
25	8,165	13.46	2.5	
26	10,380	75.00	10.9	Upper Marker


Assay Class: High Sensitivity DNA Assay  
Data Path: C:\...ents and Settings\Bioanalyzer\2013-09-05\2013-09-05\_002.xad

Created: 9/5/2013 1:23:15 PM  
Modified: 9/5/2013 2:04:36 PM

**Electropherogram Summary Continued ...****... Peak table for sample 2 : sample 2**

Peak	Size [bp]	Conc. [pg/ $\mu$ l]	Molarity [pmol/l]	Observations
27	12,595	0.00	0.0	
28	14,558	0.00	0.0	

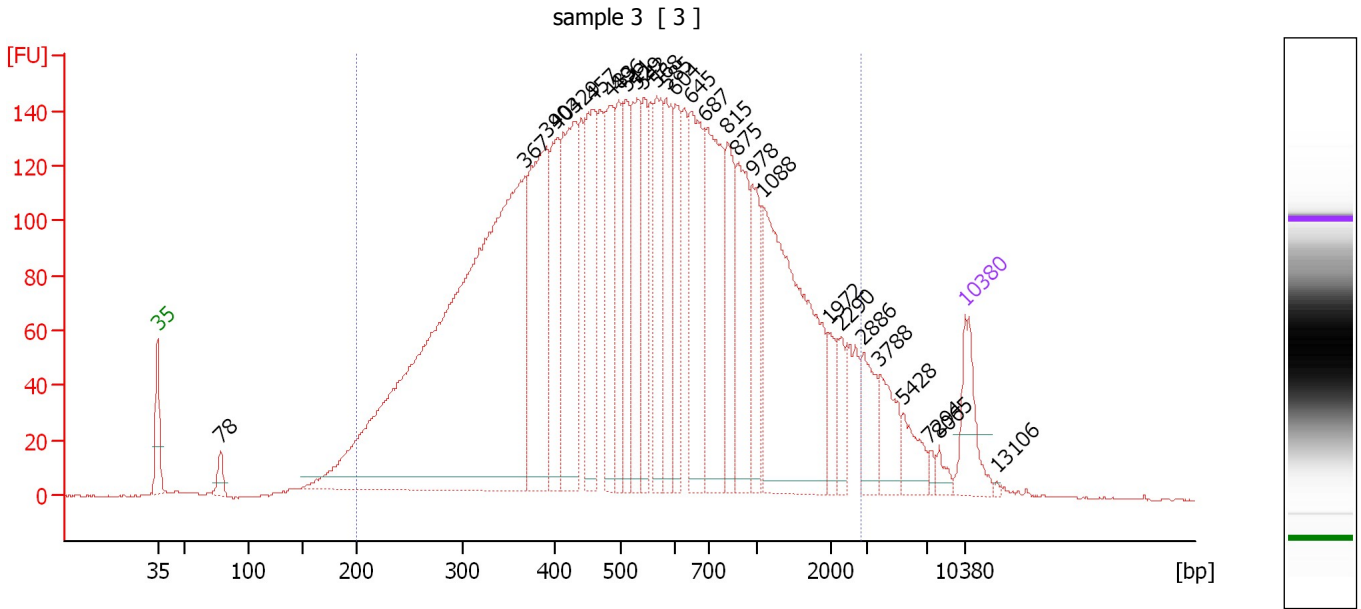
**Region table for sample 2 : sample 2**

From [bp]	To [bp]	Average Size [bp]	Molarity [pmol/l]	Conc. [pg/ $\mu$ l]	Corr. Area	% of Total	Size distribution in CV [%]	Color
286	4,899	801	17,381.8	6,109.79	6,561.0	90	80.1	

Assay Class: High Sensitivity DNA Assay  
 Data Path: C:\...ents and Settings\Bioanalyzer\2013-09-05\2013-09-05\_002.xad

Created: 9/5/2013 1:23:15 PM  
 Modified: 9/5/2013 2:04:36 PM

**Electropherogram Summary Continued ...**



**Overall Results for sample 3 : sample 3**

Number of peaks found: 28                      Corr. Area 1: 5,275.0  
 Noise: 0.4

**Peak table for sample 3 : sample 3**

Peak	Size [bp]	Conc. [pg/μl]	Molarity [pmol/l]	Observations
1	35	125.00	5,411.3	Lower Marker
2	78	35.56	690.9	
3	367	1,776.83	7,341.9	
4	390	385.68	1,498.5	
5	403	192.04	722.5	
6	429	326.14	1,152.6	
7	457	233.61	775.3	
8	483	209.95	657.9	
9	496	144.07	440.1	
10	511	141.78	420.7	
11	529	201.73	577.3	
12	543	135.52	378.4	
13	568	161.52	430.8	
14	585	165.66	429.3	
15	604	123.01	308.8	
16	645	257.63	605.6	
17	687	290.36	640.2	
18	815	150.04	279.1	
19	875	179.97	311.5	
20	978	120.59	186.9	
21	1,088	496.73	691.7	
22	1,972	41.21	31.7	
23	2,290	39.48	26.1	
24	2,886	67.53	35.5	
25	3,788	67.05	26.8	
26	5,428	45.63	12.7	



Assay Class: High Sensitivity DNA Assay  
 Data Path: C:\...ents and Settings\Bioanalyzer\2013-09-05\2013-09-05\_002.xad


Created: 9/5/2013 1:23:15 PM  
 Modified: 9/5/2013 2:04:36 PM

### Electropherogram Summary Continued ...

#### ... Peak table for sample 3 : sample 3

Peak	Size [bp]	Conc. [pg/μl]	Molarity [pmol/l]	Observations
27	7,294	9.04	1.9	
28	8,065	14.48	2.7	
29	10,380	75.00	10.9	Upper Marker
30	13,106	0.00	0.0	

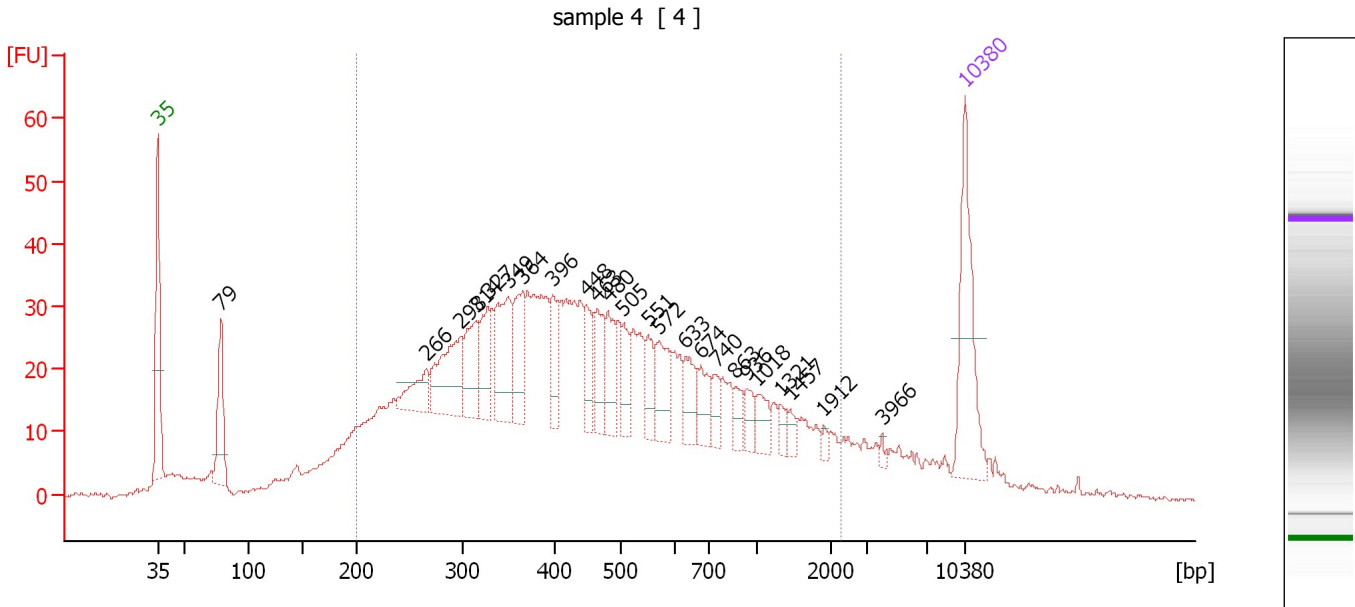
#### Region table for sample 3 : sample 3

From [bp]	To [bp]	Average Size [bp]	Molarity [pmol/l]	Conc. [pg/μl]	Corr. Area	% of Total	Size distribution in CV [%]	Color
200	2,823	679	22,512.8	6,639.01	5,275.0	94	71.9	

Assay Class: High Sensitivity DNA Assay  
 Data Path: C:\...ents and Settings\Bioanalyzer\2013-09-05\2013-09-05\_002.xad

Created: 9/5/2013 1:23:15 PM  
 Modified: 9/5/2013 2:04:36 PM

**Electropherogram Summary Continued ...**



**Overall Results for sample 4 : sample 4**

Number of peaks found: 24                      Corr. Area 1: 1,083.2  
 Noise: 0.4

**Peak table for sample 4 : sample 4**

Peak	Size [bp]	Conc. [pg/μl]	Molarity [pmol/l]	Observations
1	35	125.00	5,411.3	Lower Marker
2	79	73.01	1,408.8	
3	266	36.47	207.8	
4	298	81.58	415.3	
5	314	49.99	240.9	
6	327	43.14	199.8	
7	349	72.47	314.8	
8	364	52.60	218.9	
9	396	30.85	117.9	
10	448	30.00	101.5	
11	463	37.40	122.4	
12	480	35.66	112.5	
13	505	25.34	76.1	
14	551	23.19	63.8	
15	572	38.59	102.3	
16	633	27.60	66.1	
17	674	23.73	53.3	
18	740	15.28	31.3	
19	863	13.88	24.4	
20	936	13.73	22.2	
21	1,018	17.46	26.0	
22	1,321	7.81	9.0	
23	1,457	8.15	8.5	
24	1,912	4.13	3.3	
25	3,966	2.98	1.1	
26	10,380	75.00	10.9	Upper Marker

Assay Class: High Sensitivity DNA Assay  
Data Path: C:\...ents and Settings\Bioanalyzer\2013-09-05\2013-09-05\_002.xad

Created: 9/5/2013 1:23:15 PM  
Modified: 9/5/2013 2:04:36 PM

**Electropherogram Summary Continued ...**

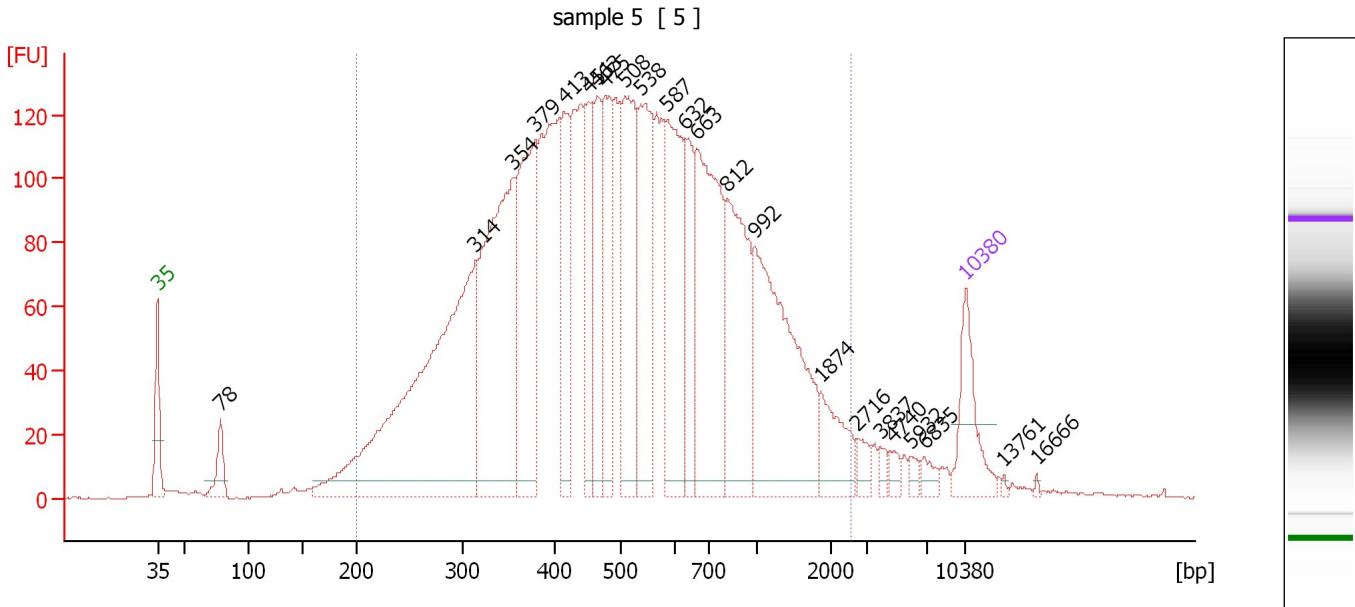
... Region table for sample 4 : sample 4

From [bp]	To [bp]	Average Size [bp]	Molarity [pmol/l]	Conc. [pg/μl]	Corr. Area	% of Total	Size distribution in CV [%]	Color
200	2,271	538	7,447.2	1,891.75	1,083.2	87	66.3	■

Assay Class: High Sensitivity DNA Assay  
 Data Path: C:\...ents and Settings\Bioanalyzer\2013-09-05\2013-09-05\_002.xad

Created: 9/5/2013 1:23:15 PM  
 Modified: 9/5/2013 2:04:36 PM

**Electropherogram Summary Continued ...**



**Overall Results for sample 5 : sample 5**

Number of peaks found: 23      Corr. Area 1: 4,190.0  
 Noise: 0.3

**Peak table for sample 5 : sample 5**

Peak	Size [bp]	Conc. [pg/μl]	Molarity [pmol/l]	Observations
1	35	125.00	5,411.3	Lower Marker
2	78	55.71	1,077.3	
3	314	814.53	3,930.6	
4	354	498.60	2,134.0	
5	379	302.02	1,208.8	
6	413	160.56	589.5	
7	451	122.95	412.7	
8	463	141.93	464.1	
9	475	159.94	509.8	
10	508	244.36	728.5	
11	538	229.37	646.3	
12	587	239.39	618.4	
13	632	113.58	272.2	
14	663	319.86	731.4	
15	812	235.45	439.2	
16	992	332.67	508.3	
17	1,874	67.42	54.5	
18	2,716	18.46	10.3	
19	3,837	10.48	4.1	
20	4,740	11.43	3.7	
21	5,932	9.86	2.5	
22	6,835	13.47	3.0	
23	10,380	75.00	10.9	Upper Marker
24	13,761	0.00	0.0	
25	16,666	0.00	0.0	

Assay Class: High Sensitivity DNA Assay  
Data Path: C:\...ents and Settings\Bioanalyzer\2013-09-05\2013-09-05\_002.xad

Created: 9/5/2013 1:23:15 PM  
Modified: 9/5/2013 2:04:36 PM

**Electropherogram Summary Continued ...**

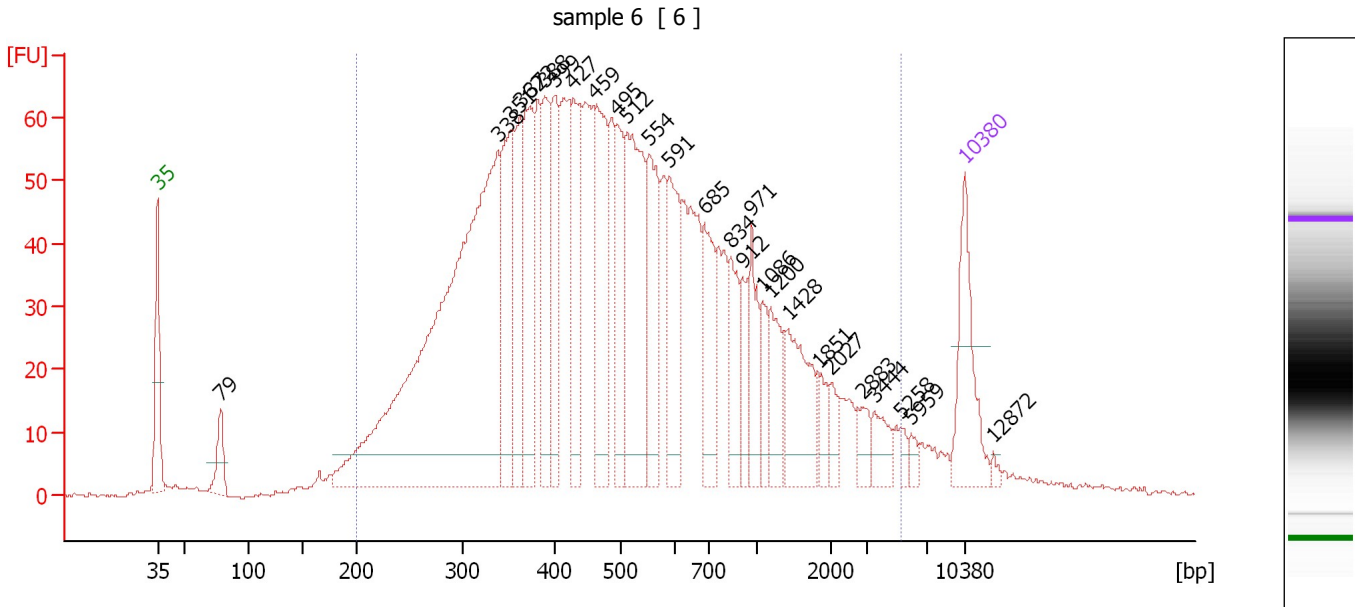
... Region table for sample 5 : sample 5

From [bp]	To [bp]	Average Size [bp]	Molarity [pmol/l]	Conc. [pg/μl]	Corr. Area	% of Total	Size distribution in CV [%]	Color
200	2,557	604	17,146.7	4,947.26	4,190.0	94	62.8	■

Assay Class: High Sensitivity DNA Assay  
 Data Path: C:\...ents and Settings\Bioanalyzer\2013-09-05\2013-09-05\_002.xad

Created: 9/5/2013 1:23:15 PM  
 Modified: 9/5/2013 2:04:36 PM

**Electropherogram Summary Continued ...**



**Overall Results for sample 6 : sample 6**

Number of peaks found: 27                      Corr. Area 1: 2,168.8  
 Noise: 0.4

**Peak table for sample 6 : sample 6**

Peak	Size [bp]	Conc. [pg/μl]	Molarity [pmol/l]	Observations
1	35	125.00	5,411.3	Lower Marker
2	79	46.52	897.4	
3	338	864.27	3,875.0	
4	351	144.83	625.3	
5	362	110.57	462.9	
6	372	141.61	576.3	
7	388	111.03	433.0	
8	399	101.26	384.7	
9	427	119.32	423.3	
10	459	159.66	526.5	
11	495	93.06	285.1	
12	512	203.41	602.5	
13	554	112.93	309.0	
14	591	99.32	254.5	
15	685	86.87	192.1	
16	834	57.86	105.1	
17	912	35.92	59.7	
18	971	53.78	83.9	
19	1,086	31.63	44.1	
20	1,200	46.84	59.1	
21	1,428	84.21	89.4	
22	1,851	19.67	16.1	
23	2,027	17.48	13.1	
24	2,883	19.68	10.3	
25	3,444	23.84	10.5	
26	5,258	7.31	2.1	

Assay Class: High Sensitivity DNA Assay  
Data Path: C:\...ents and Settings\Bioanalyzer\2013-09-05\2013-09-05\_002.xad

Created: 9/5/2013 1:23:15 PM  
Modified: 9/5/2013 2:04:36 PM

**Electropherogram Summary Continued ...****... Peak table for sample 6 : sample 6**

Peak	Size [bp]	Conc. [pg/μl]	Molarity [pmol/l]	Observations
27	5,959	8.78	2.2	
28	10,380	75.00	10.9	Upper Marker
29	12,872	0.00	0.0	

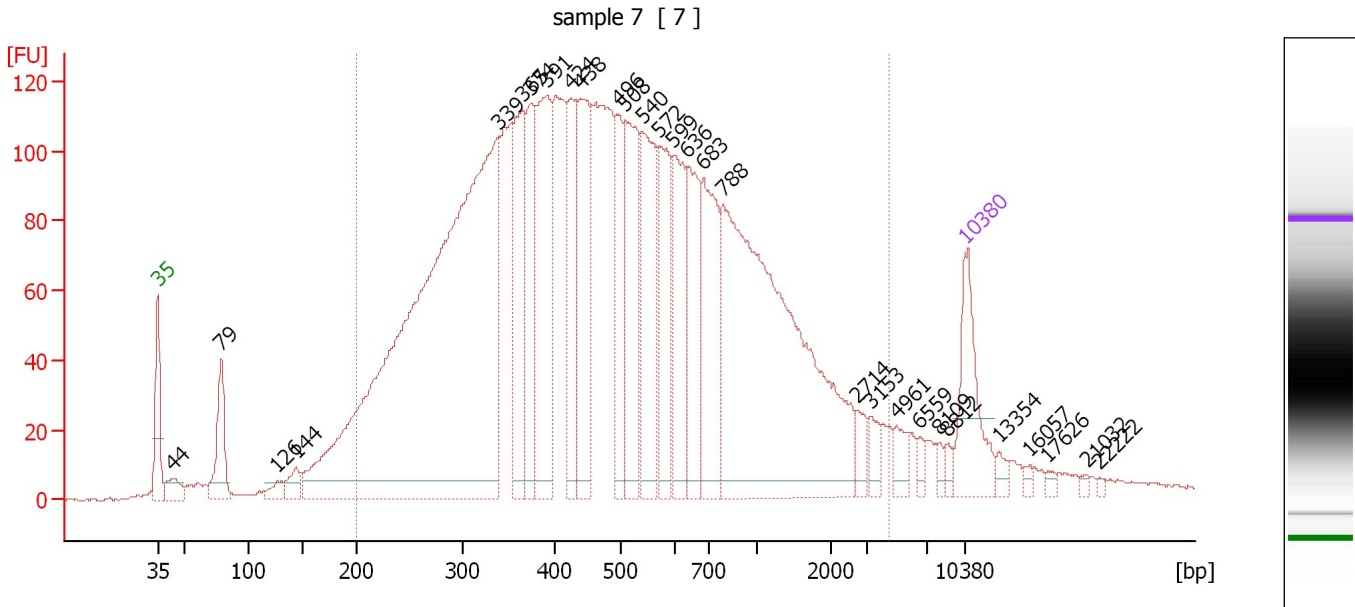
**Region table for sample 6 : sample 6**

From [bp]	To [bp]	Average Size [bp]	Molarity [pmol/l]	Conc. [pg/μl]	Corr. Area	% of Total	Size distribution in CV [%]	Color
200	5,287	688	13,324.4	3,757.65	2,168.8	94	98.1	■

Assay Class: High Sensitivity DNA Assay  
 Data Path: C:\...ents and Settings\Bioanalyzer\2013-09-05\2013-09-05\_002.xad

Created: 9/5/2013 1:23:15 PM  
 Modified: 9/5/2013 2:04:36 PM

**Electropherogram Summary Continued ...**



**Overall Results for sample 7 : sample 7**

Number of peaks found: 29      Corr. Area 1: 4,321.5  
 Noise: 0.4

**Peak table for sample 7 : sample 7**

Peak	Size [bp]	Conc. [pg/μl]	Molarity [pmol/l]	Observations
1	35	125.00	5,411.3	Lower Marker
2	44	31.01	1,077.1	
3	79	92.01	1,774.6	
4	126	18.92	227.4	
5	144	26.34	278.0	
6	339	1,280.91	5,732.3	
7	365	155.07	643.7	
8	374	122.76	497.9	
9	391	216.29	838.6	
10	424	138.75	496.2	
11	438	175.02	605.7	
12	496	97.81	298.6	
13	508	168.25	501.6	
14	540	148.75	417.7	
15	572	120.28	318.5	
16	599	122.65	310.3	
17	636	118.47	282.1	
18	683	155.43	344.9	
19	788	621.27	1,194.8	
20	2,714	18.42	10.3	
21	3,153	16.81	8.1	
22	4,961	18.08	5.5	
23	6,559	8.15	1.9	
24	8,109	7.08	1.3	
25	8,812	7.26	1.2	
26	10,380	75.00	10.9	Upper Marker




Assay Class: High Sensitivity DNA Assay  
Data Path: C:\...ents and Settings\Bioanalyzer\2013-09-05\2013-09-05\_002.xad

Created: 9/5/2013 1:23:15 PM  
Modified: 9/5/2013 2:04:36 PM

**Electropherogram Summary Continued ...****... Peak table for sample 7 : sample 7**

Peak	Size [bp]	Conc. [pg/μl]	Molarity [pmol/l]	Observations
27	13,354	0.00	0.0	
28	16,057	0.00	0.0	
29	17,626	0.00	0.0	
30	21,032	0.00	0.0	
31	22,222	0.00	0.0	

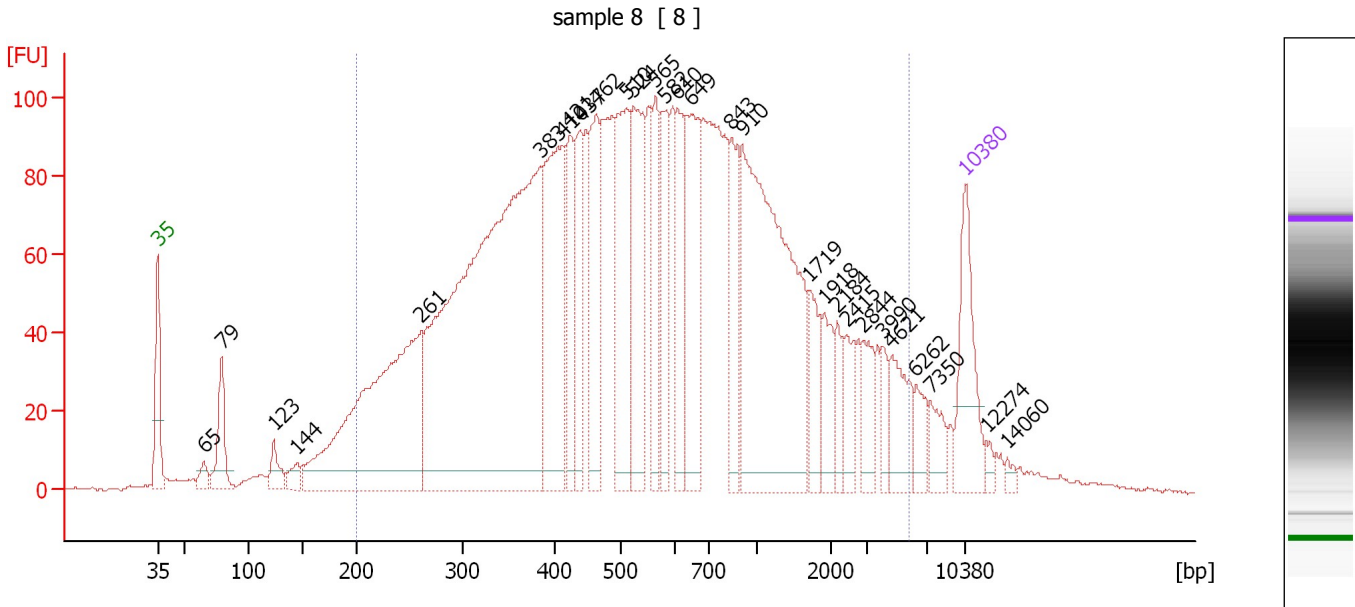
**Region table for sample 7 : sample 7**

From [bp]	To [bp]	Average Size [bp]	Molarity [pmol/l]	Conc. [pg/μl]	Corr. Area	% of Total	Size distribution in CV [%]	Color
200	4,417	644	16,074.9	4,377.57	4,321.5	90	86.5	

Assay Class: High Sensitivity DNA Assay  
 Data Path: C:\...ents and Settings\Bioanalyzer\2013-09-05\2013-09-05\_002.xad

Created: 9/5/2013 1:23:15 PM  
 Modified: 9/5/2013 2:04:36 PM

**Electropherogram Summary Continued ...**



**Overall Results for sample 8 : sample 8**

Number of peaks found: 29                      Corr. Area 1: 3,830.9  
 Noise: 0.4

**Peak table for sample 8 : sample 8**

Peak	Size [bp]	Conc. [pg/μl]	Molarity [pmol/l]	Observations
1	35	125.00	5,411.3	Lower Marker
2	65	17.97	418.0	
3	79	71.89	1,377.3	
4	123	28.79	355.2	
5	144	19.83	208.4	
6	261	450.34	2,613.7	
7	383	893.86	3,534.6	
8	410	222.02	820.5	
9	421	89.36	321.4	
10	437	89.51	310.1	
11	462	129.70	425.4	
12	510	159.81	474.7	
13	524	138.19	399.6	
14	565	77.98	209.2	
15	582	86.40	224.9	
16	610	84.11	209.0	
17	649	144.89	338.0	
18	843	81.13	145.9	
19	910	394.69	656.9	
20	1,719	41.78	36.8	
21	1,918	37.94	30.0	
22	2,184	21.92	15.2	
23	2,415	33.29	20.9	
24	2,844	33.21	17.7	
25	3,990	18.54	7.0	
26	4,621	49.16	16.1	

Assay Class: High Sensitivity DNA Assay  
 Data Path: C:\...ents and Settings\Bioanalyzer\2013-09-05\2013-09-05\_002.xad

Created: 9/5/2013 1:23:15 PM  
 Modified: 9/5/2013 2:04:36 PM

**Electropherogram Summary Continued ...**

**... Peak table for sample 8 : sample 8**

Peak	Size [bp]	Conc. [pg/µl]	Molarity [pmol/l]	Observations
27	6,262	22.81	5.5	
28	7,350	23.00	4.7	
29	10,380	75.00	10.9	Upper Marker
30	12,274	0.00	0.0	
31	14,060	0.00	0.0	

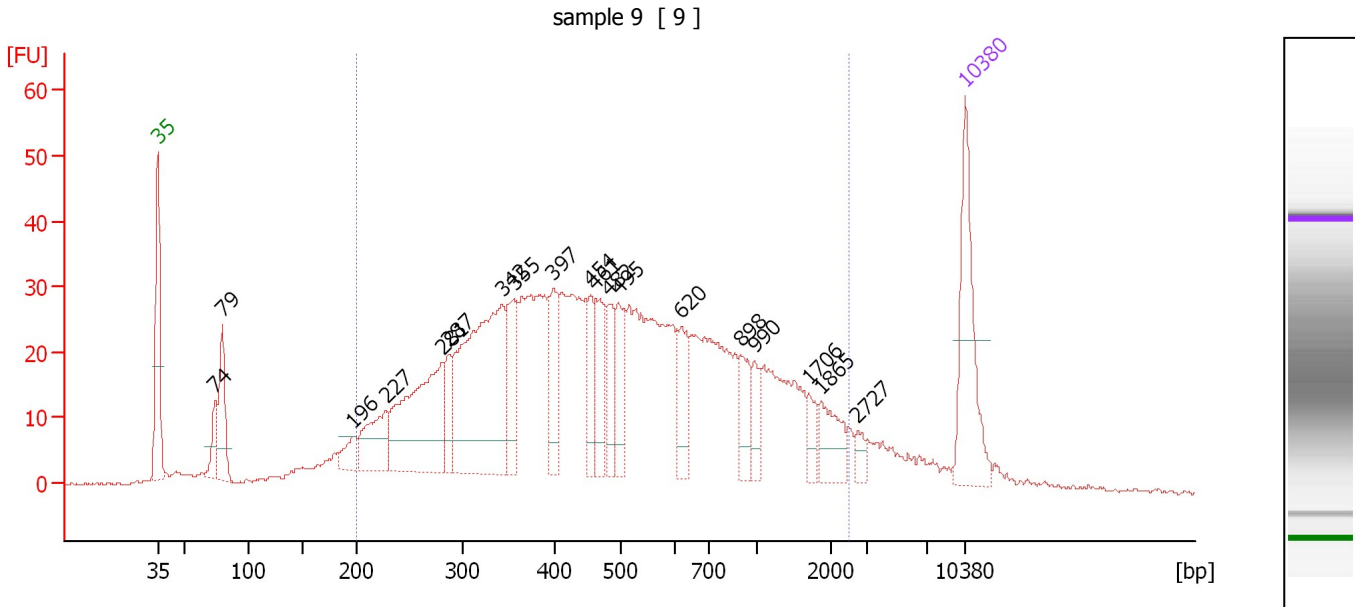
**Region table for sample 8 : sample 8**

From [bp]	To [bp]	Average Size [bp]	Molarity [pmol/l]	Conc. [pg/µl]	Corr. Area	% of Total	Size distribution in CV [%]	Color
200	5,800	843	13,254.4	3,959.58	3,830.9	90	100.0	

Assay Class: High Sensitivity DNA Assay  
 Data Path: C:\...ents and Settings\Bioanalyzer\2013-09-05\2013-09-05\_002.xad

Created: 9/5/2013 1:23:15 PM  
 Modified: 9/5/2013 2:04:36 PM

**Electropherogram Summary Continued ...**



**Overall Results for sample 9 : sample 9**

Number of peaks found: 19      Corr. Area 1: 1,127.3  
 Noise: 0.2

**Peak table for sample 9 : sample 9**

Peak	Size [bp]	Conc. [pg/μl]	Molarity [pmol/l]	Observations
1	35	125.00	5,411.3	Lower Marker
2	74	29.09	595.0	
3	79	66.95	1,277.9	
4	196	19.61	151.6	
5	227	60.17	401.3	
6	281	164.11	885.1	
7	287	32.72	172.5	
8	342	236.95	1,048.4	
9	355	60.84	259.6	
10	397	46.63	177.9	
11	454	37.40	124.9	
12	461	47.92	157.4	
13	482	35.35	111.1	
14	495	40.07	122.5	
15	620	37.94	92.7	
16	898	27.90	47.1	
17	990	18.74	28.7	
18	1,706	14.18	12.6	
19	1,865	30.34	24.7	
20	2,727	8.12	4.5	
21	10,380	75.00	10.9	Upper Marker

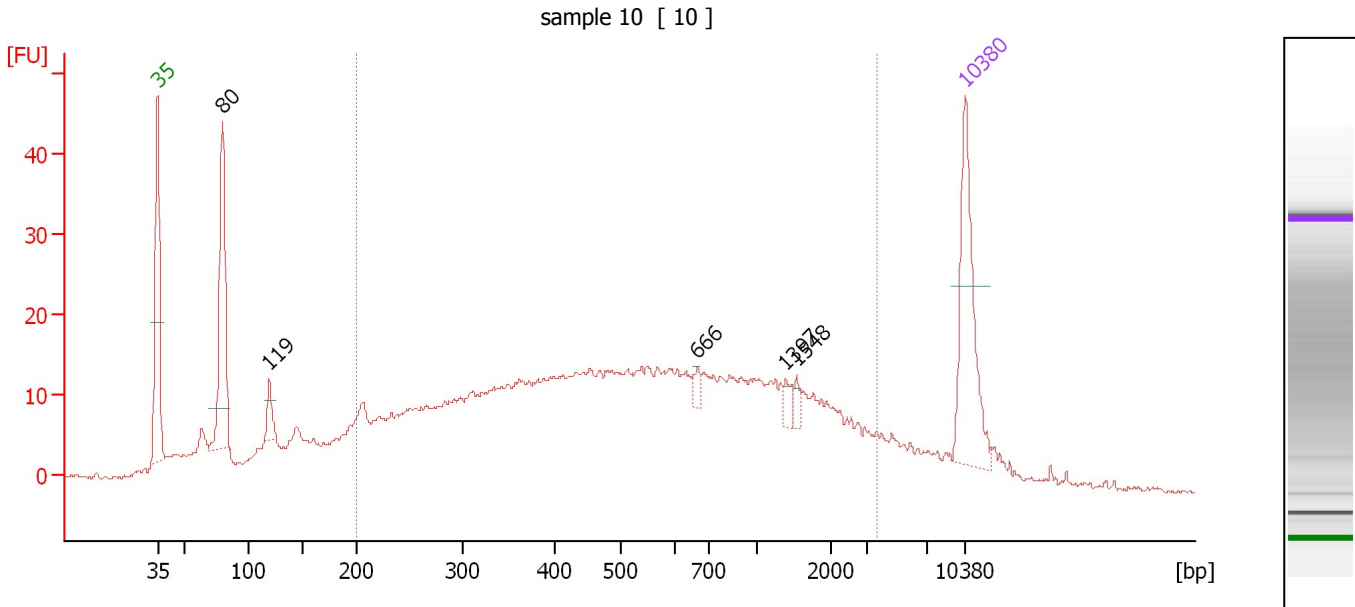
**Region table for sample 9 : sample 9**

From [bp]	To [bp]	Average Size [bp]	Molarity [pmol/l]	Conc. [pg/μl]	Corr. Area	% of Total	Size distribution in CV [%]	Color
200	2,481	611	6,781.8	1,834.22	1,127.3	86	70.4	Blue

Assay Class: High Sensitivity DNA Assay  
 Data Path: C:\...ents and Settings\Bioanalyzer\2013-09-05\2013-09-05\_002.xad

Created: 9/5/2013 1:23:15 PM  
 Modified: 9/5/2013 2:04:36 PM

**Electropherogram Summary Continued ...**



**Overall Results for sample 10 : sample 10**

Number of peaks found: 5                      Corr. Area 1: 646.6  
 Noise: 0.3

**Peak table for sample 10 : sample 10**

Peak	Size [bp]	Conc. [pg/μl]	Molarity [pmol/l]	Observations
1	35	125.00	5,411.3	Lower Marker
2	80	140.89	2,677.1	
3	119	19.68	250.5	
4	666	6.37	14.5	
5	1,397	7.00	7.6	
6	1,548	5.98	5.9	
7	10,380	75.00	10.9	Upper Marker

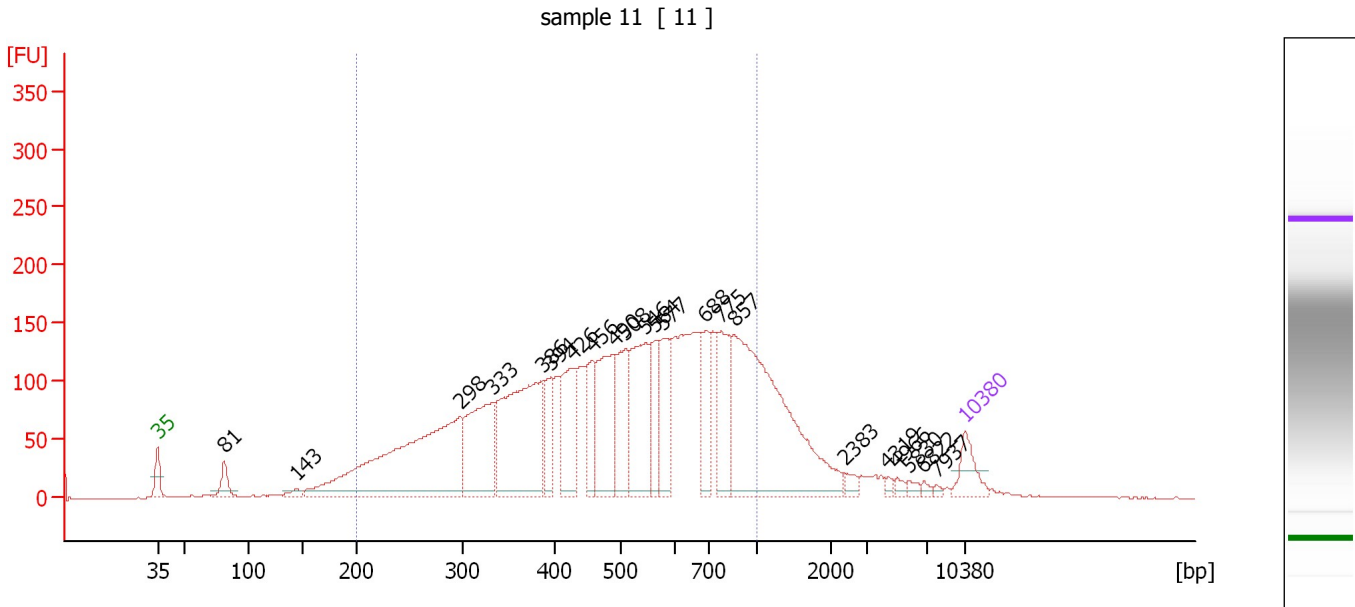
**Region table for sample 10 : sample 10**

From [bp]	To [bp]	Average Size [bp]	Molarity [pmol/l]	Conc. [pg/μl]	Corr. Area	% of Total	Size distribution in CV [%]	Color
200	3,621	758	4,665.5	1,304.50	646.6	72	83.9	Blue

Assay Class: High Sensitivity DNA Assay  
 Data Path: C:\...ents and Settings\Bioanalyzer\2013-09-05\2013-09-05\_002.xad

Created: 9/5/2013 1:23:15 PM  
 Modified: 9/5/2013 2:04:36 PM

**Electropherogram Summary Continued ...**



**Overall Results for sample 11 : sample 11**

Number of peaks found: 22                      Corr. Area 1: 4,089.5  
 Noise: 0.3

**Peak table for sample 11 : sample 11**

Peak	Size [bp]	Conc. [pg/μl]	Molarity [pmol/l]	Observations
1	35	125.00	5,411.3	Lower Marker
2	81	79.62	1,491.9	
3	143	23.46	248.8	
4	298	1,087.28	5,533.7	
5	333	433.71	1,975.2	
6	386	683.70	2,686.3	
7	394	129.56	498.5	
8	426	267.12	950.1	
9	456	150.19	499.0	
10	490	348.75	1,078.6	
11	508	234.35	699.2	
12	546	360.27	999.7	
13	564	142.17	382.0	
14	577	196.65	516.4	
15	688	145.66	320.7	
16	775	222.55	435.2	
17	857	997.59	1,764.2	
18	2,383	23.02	14.6	
19	4,319	11.40	4.0	
20	4,966	14.79	4.5	
21	5,830	15.52	4.0	
22	6,822	11.32	2.5	
23	7,937	7.28	1.4	
24	10,380	75.00	10.9	Upper Marker

Assay Class: High Sensitivity DNA Assay  
Data Path: C:\...ents and Settings\Bioanalyzer\2013-09-05\2013-09-05\_002.xad

Created: 9/5/2013 1:23:15 PM  
Modified: 9/5/2013 2:04:36 PM

**Electropherogram Summary Continued ...**

... Region table for sample 11 : sample 11

From [bp]	To [bp]	Average Size [bp]	Molarity [pmol/l]	Conc. [pg/μl]	Corr. Area	% of Total	Size distribution in CV [%]	Color
200	1,000	514	21,153.5	5,821.46	4,089.5	78	37.3	■