

Assay Class: High Sensitivity DNA Assay
Data Path: C:\...ents and Settings\Bioanalyzer\2013-09-05\2013-09-05_003.xad

Created: 9/5/2013 2:14:25 PM
Modified: 9/12/2013 5:56:37 PM

Electrophoresis File Run Summary

Instrument Information:

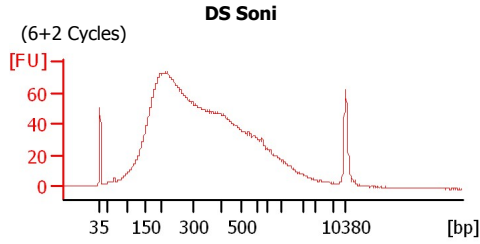
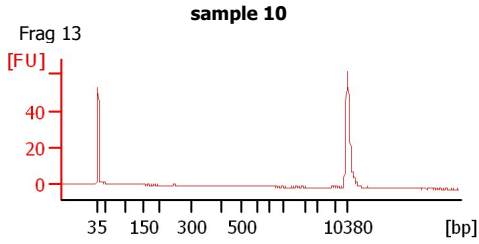
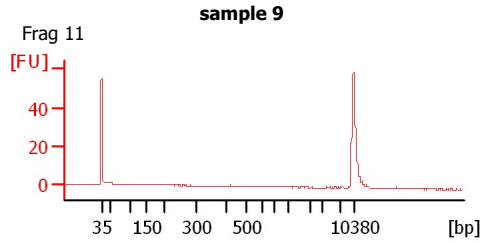
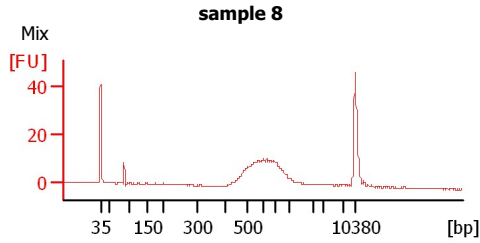
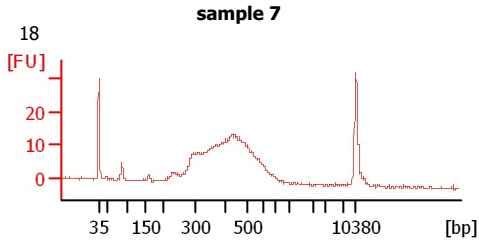
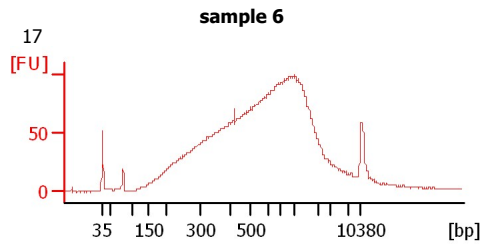
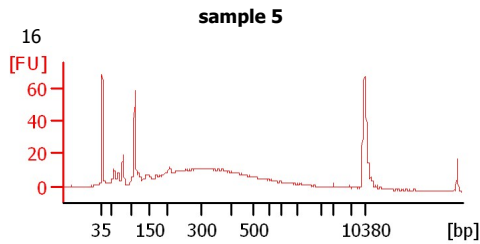
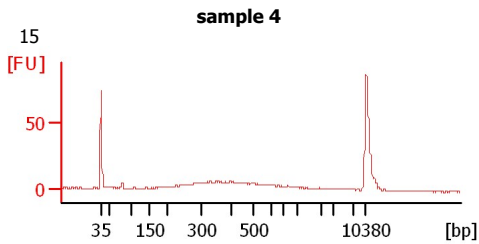
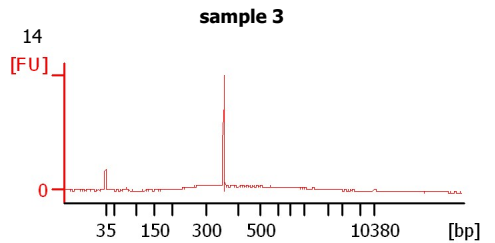
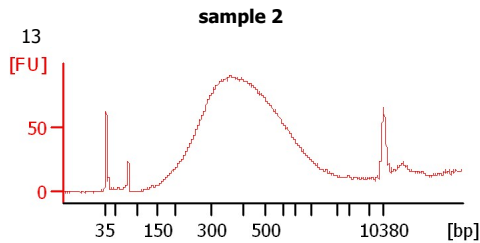
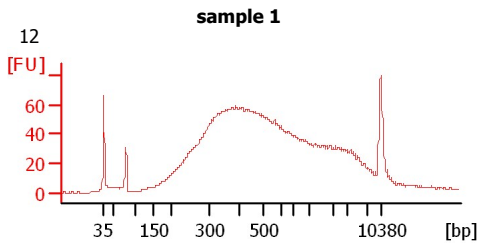
Instrument Name: DE13701086 Firmware: C.01.069
Serial#: DE13701086 Type: G2938B

Assay Information:

Assay Origin Path: C:\Program Files\Agilent\2100 bioanalyzer\2100 expert\assays\dsDNA\High Sensitivity DNA.xsy
Assay Class: High Sensitivity DNA Assay
Version: 1.03
Assay Comments: Copyright © 2003-2010 Agilent Technologies

Chip Information:

Chip Lot #:
Reagent Kit Lot #:
Chip Comments:



Assay Class: High Sensitivity DNA Assay
Data Path: C:\...ents and Settings\Bioanalyzer\2013-09-05\2013-09-05_003.xad

Created: 9/5/2013 2:14:25 PM
Modified: 9/12/2013 5:56:37 PM

Electrophoresis File Run Summary (Chip Summary)

Sample Name	Sample Comment	Rest. Digest	Status	Observation	Result Label	Result Color
sample 1	12	<input type="checkbox"/>	✓			
sample 2	13	<input type="checkbox"/>	✓			
sample 3	14	<input type="checkbox"/>	✓			
sample 4	15	<input type="checkbox"/>	✓			
sample 5	16	<input type="checkbox"/>	✓			
sample 6	17	<input type="checkbox"/>	✓			
sample 7	18	<input type="checkbox"/>	✓			
sample 8	Mix	<input type="checkbox"/>	✓			
sample 9	Frag 11	<input type="checkbox"/>	✓			
sample 10	Frag 13	<input type="checkbox"/>	✓			
DS Soni	(6+2 Cycles)	<input type="checkbox"/>	✓			
Ladder		<input type="checkbox"/>	✓			

Chip Lot #

Reagent Kit Lot #

Chip Comments :

Assay Class: High Sensitivity DNA Assay
 Data Path: C:\...ents and Settings\Bioanalyzer\2013-09-05\2013-09-05_003.xad

Created: 9/5/2013 2:14:25 PM
 Modified: 9/12/2013 5:56:37 PM

Electrophoresis Assay Details

General Analysis Settings

Number of Available Sample and Ladder Wells (Max.) : 12
 Minimum Visible Range [s] : 32
 Maximum Visible Range [s] : 138
 Start Analysis Time Range [s] : 33
 End Analysis Time Range [s] : 137.5
 Ladder Concentration [pg/μl] : 1950
 Uses Standard Area for Ladder Fragments
 Lower Marker Concentration [pg/μl] : 125
 Upper Marker Concentration [pg/μl] : 75
 Used Upper Marker for Quantitation
 Standard Curve Fit is Point to Point
 Show Data Aligned to Lower and Upper Marker

Integrator Settings

Integration Start Time [s] : 33.05
 Integration End Time [s] : 137
 Slope Threshold : 0.8
 Height Threshold [FU] : 5
 Area Threshold : 0.1
 Width Threshold [s] : 0.6
 Baseline Plateau [s] : 0.5

Filter Settings

Filter Width [s] : 0.5
 Polynomial Order : 4

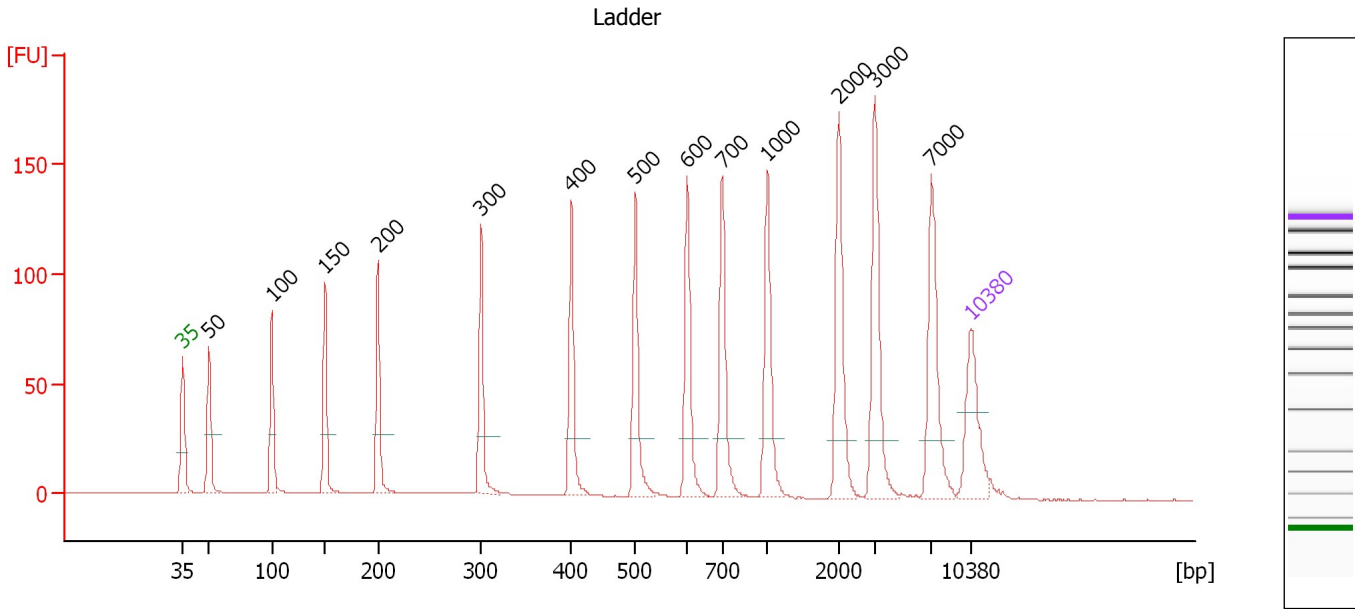
Ladder

Ladder Peak	Size	Area
1	35	160
2	50	210
3	100	208
4	150	221
5	200	242
6	300	270
7	400	305
8	500	306
9	600	336
10	700	321
11	1000	366
12	2000	413
13	3000	411
14	7000	400
15	10380	214

Assay Class: High Sensitivity DNA Assay
 Data Path: C:\...ents and Settings\Bioanalyzer\2013-09-05\2013-09-05_003.xad

Created: 9/5/2013 2:14:25 PM
 Modified: 9/12/2013 5:56:37 PM

Electropherogram Summary



Overall Results for Ladder

Noise: 0.2

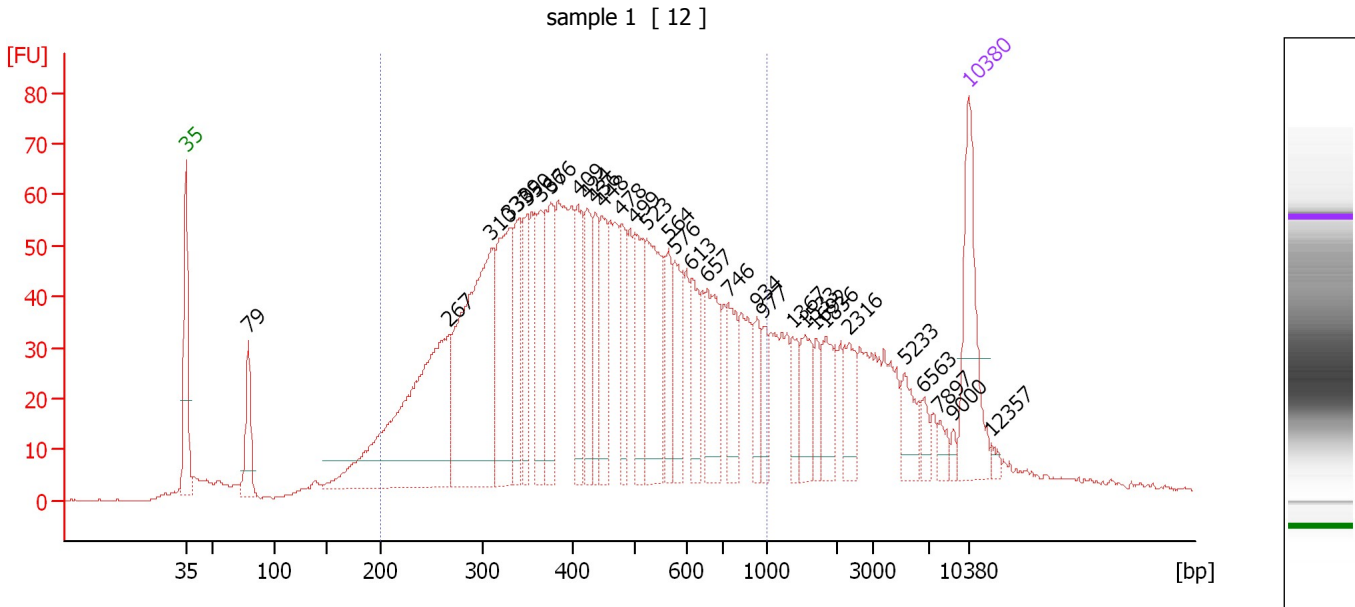
Peak table for Ladder

Peak	Size [bp]	Conc. [pg/μl]	Molarity [pmol/l]	Observations
1	35	125.00	5,411.3	Lower Marker
2	50	150.00	4,545.5	Ladder Peak
3	100	150.00	2,272.7	Ladder Peak
4	150	150.00	1,515.2	Ladder Peak
5	200	150.00	1,136.4	Ladder Peak
6	300	150.00	757.6	Ladder Peak
7	400	150.00	568.2	Ladder Peak
8	500	150.00	454.5	Ladder Peak
9	600	150.00	378.8	Ladder Peak
10	700	150.00	324.7	Ladder Peak
11	1,000	150.00	227.3	Ladder Peak
12	2,000	150.00	113.6	Ladder Peak
13	3,000	150.00	75.8	Ladder Peak
14	7,000	150.00	32.5	Ladder Peak
15	10,380	75.00	10.9	Upper Marker

Assay Class: High Sensitivity DNA Assay
 Data Path: C:\...ents and Settings\Bioanalyzer\2013-09-05\2013-09-05_003.xad

Created: 9/5/2013 2:14:25 PM
 Modified: 9/12/2013 5:56:37 PM

Electropherogram Summary Continued ...



Overall Results for sample 1 : sample 1

Number of peaks found: 32 Corr. Area 1: 1,920.0
 Noise: 0.2

Peak table for sample 1 : sample 1

Peak	Size [bp]	Conc. [pg/μl]	Molarity [pmol/l]	Observations
1	35	125.00	5,411.3	Lower Marker
2	79	60.69	1,161.8	
3	267	334.63	1,897.6	
4	310	291.95	1,426.9	
5	330	144.52	664.2	
6	339	58.56	261.6	
7	350	58.29	252.4	
8	366	70.21	290.7	
9	376	91.58	368.9	
10	409	57.05	211.3	
11	424	59.87	213.8	
12	436	50.73	176.3	
13	448	60.93	206.2	
14	478	50.37	159.7	
15	499	68.18	207.0	
16	523	97.59	282.9	
17	564	37.04	99.5	
18	576	53.43	140.7	
19	613	47.05	116.3	
20	657	68.97	159.0	
21	746	44.37	90.2	
22	934	23.46	38.1	
23	977	23.49	36.4	
24	1,367	24.04	26.7	
25	1,533	33.64	33.2	
26	1,692	15.98	14.3	

Assay Class: High Sensitivity DNA Assay
 Data Path: C:\...ents and Settings\Bioanalyzer\2013-09-05\2013-09-05_003.xad


Created: 9/5/2013 2:14:25 PM
 Modified: 9/12/2013 5:56:37 PM

Electropherogram Summary Continued ...

... Peak table for sample 1 : sample 1

Peak	Size [bp]	Conc. [pg/µl]	Molarity [pmol/l]	Observations
27	1,836	34.55	28.5	
28	2,316	27.73	18.1	
29	5,233	24.36	7.1	
30	6,563	9.93	2.3	
31	7,897	9.56	1.8	
32	9,000	4.59	0.8	
33	10,380	75.00	10.9	Upper Marker
34	12,357	0.00	0.0	

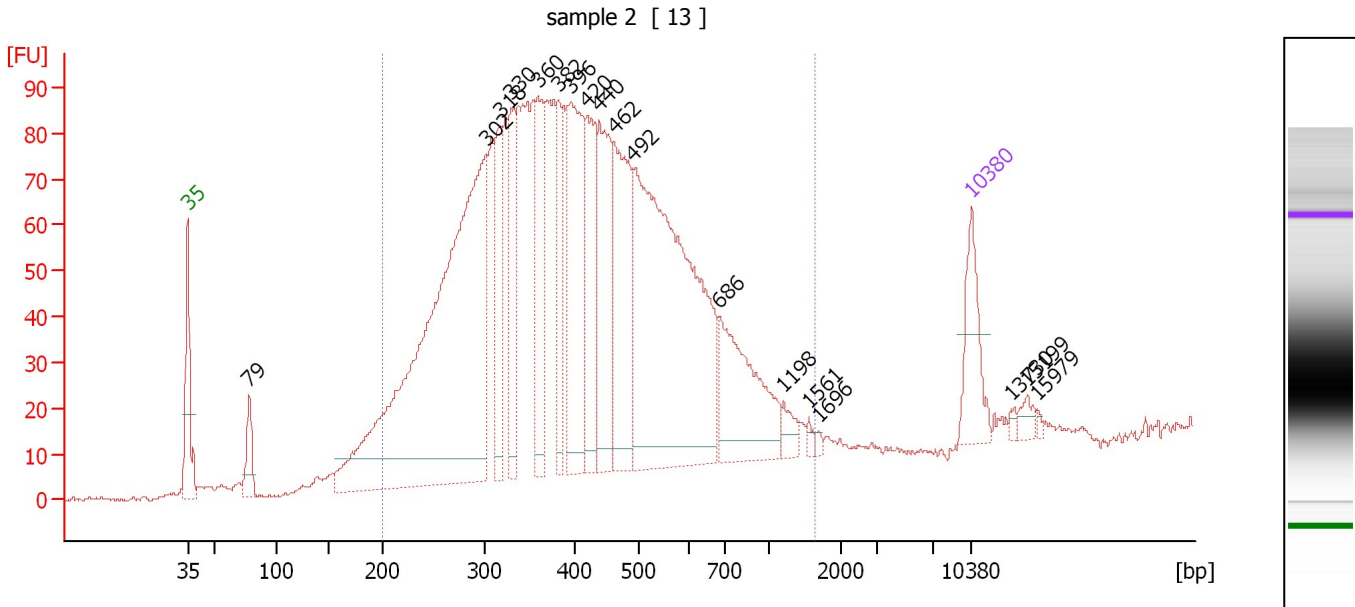
Region table for sample 1 : sample 1

From [bp]	To [bp]	Average Size [bp]	Molarity [pmol/l]	Conc. [pg/µl]	Corr. Area	% of Total	Size distribution in CV [%]	Color
200	1,000	458	9,564.1	2,400.45	1,920.0	77	37.9	

Assay Class: High Sensitivity DNA Assay
 Data Path: C:\...ents and Settings\Bioanalyzer\2013-09-05\2013-09-05_003.xad

Created: 9/5/2013 2:14:25 PM
 Modified: 9/12/2013 5:56:37 PM

Electropherogram Summary Continued ...



Overall Results for sample 2 : sample 2

Number of peaks found: 18 Corr. Area 1: 2,465.5
 Noise: 0.4

Peak table for sample 2 : sample 2

Peak	Size [bp]	Conc. [pg/μl]	Molarity [pmol/l]	Observations
1	35	125.00	5,411.3	Lower Marker
2	79	64.13	1,235.8	
3	302	1,180.20	5,929.4	
4	318	135.05	644.2	
5	330	147.87	679.9	
6	360	150.76	634.8	
7	382	114.66	455.0	
8	396	285.95	1,095.4	
9	420	174.18	628.9	
10	440	202.65	698.3	
11	462	253.26	830.0	
12	492	771.57	2,373.8	
13	686	211.42	467.0	
14	1,198	21.89	27.7	
15	1,561	7.14	6.9	
16	1,696	4.12	3.7	
17	10,380	75.00	10.9	Upper Marker
18	13,730	0.00	0.0	
19	15,199	0.00	0.0	
20	15,979	0.00	0.0	

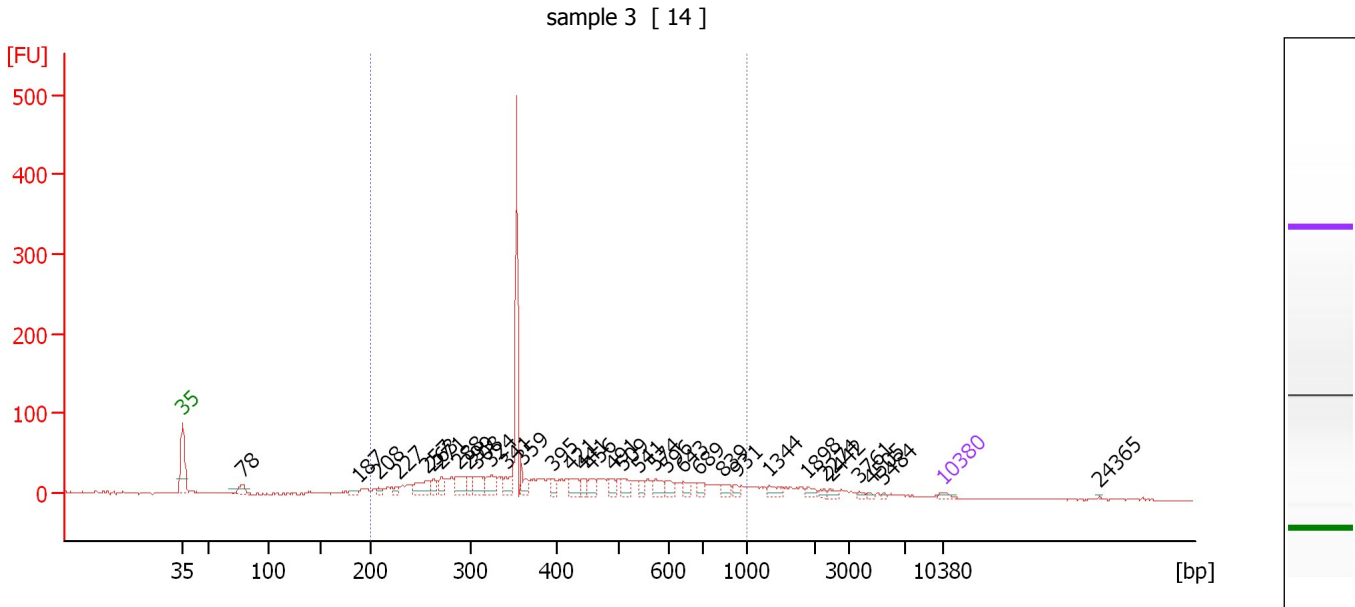
Region table for sample 2 : sample 2

From [bp]	To [bp]	Average Size [bp]	Molarity [pmol/l]	Conc. [pg/μl]	Corr. Area	% of Total	Size distribution in CV [%]	Color
200	1,644	437	17,721.9	4,298.74	2,465.5	95	42.0	Blue

Assay Class: High Sensitivity DNA Assay
 Data Path: C:\...ents and Settings\Bioanalyzer\2013-09-05\2013-09-05_003.xad

Created: 9/5/2013 2:14:25 PM
 Modified: 9/12/2013 5:56:37 PM

Electropherogram Summary Continued ...



Overall Results for sample 3 : sample 3

Number of peaks found: 34 Corr. Area 1: 1,014.4
 Noise: 0.9

Peak table for sample 3 : sample 3

Peak	Size [bp]	Conc. [pg/μl]	Molarity [pmol/l]	Observations
1	35	125.00	5,411.3	Lower Marker
2	78	320.58	6,222.8	
3	187	95.25	771.4	
4	208	127.20	925.6	
5	227	142.54	951.6	
6	257	548.10	3,232.4	
7	263	277.85	1,602.0	
8	271	296.53	1,659.0	
9	288	500.39	2,633.0	
10	299	290.27	1,472.7	
11	308	480.69	2,367.3	
12	324	447.77	2,092.4	
13	341	409.02	1,818.4	
14	359	264.66	1,116.3	
15	395	212.69	816.1	
16	421	320.76	1,153.6	
17	441	218.60	750.7	
18	456	249.78	830.1	
19	491	213.50	659.5	
20	509	265.80	791.9	
21	541	177.04	496.1	
22	574	279.16	737.1	
23	596	222.39	565.0	
24	643	175.86	414.2	
25	689	181.26	398.6	
26	839	172.63	311.7	

Assay Class: High Sensitivity DNA Assay
 Data Path: C:\...ents and Settings\Bioanalyzer\2013-09-05\2013-09-05_003.xad

Created: 9/5/2013 2:14:25 PM
 Modified: 9/12/2013 5:56:37 PM

Electropherogram Summary Continued ...

... Peak table for sample 3 : sample 3

Peak	Size [bp]	Conc. [pg/μl]	Molarity [pmol/l]	Observations
27	931	111.92	182.2	
28	1,344	184.31	207.8	
29	1,898	121.63	97.1	
30	2,274	71.81	47.9	
31	2,442	82.61	51.3	
32	3,761	49.91	20.1	
33	4,505	35.26	11.9	
34	5,484	30.57	8.4	
35	10,380	75.00	10.9	Upper Marker
36	24,365	0.00	0.0	

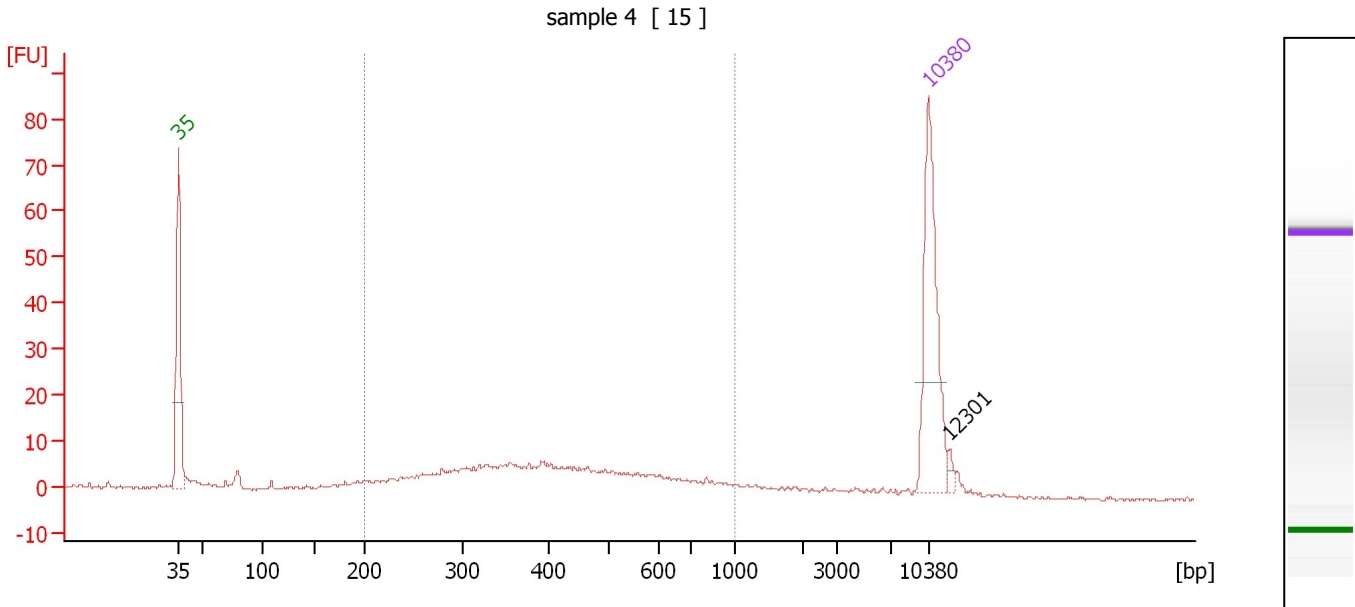
Region table for sample 3 : sample 3

From [bp]	To [bp]	Average Size [bp]	Molarity [pmol/l]	Conc. [pg/μl]	Corr. Area	% of Total	Size distribution in CV [%]	Color
200	1,000	437	52,328.7	12,669.92	1,014.4	80	38.5	

Assay Class: High Sensitivity DNA Assay
 Data Path: C:\...ents and Settings\Bioanalyzer\2013-09-05\2013-09-05_003.xad

Created: 9/5/2013 2:14:25 PM
 Modified: 9/12/2013 5:56:37 PM

Electropherogram Summary Continued ...



Overall Results for sample 4 : sample 4

Number of peaks found: 1 Corr. Area 1: 161.4
 Noise: 0.3

Peak table for sample 4 : sample 4

Peak	Size [bp]	Conc. [pg/μl]	Molarity [pmol/l]	Observations
1	35	125.00	5,411.3	Lower Marker
2	10,380	75.00	10.9	Upper Marker
3	12,301	0.00	0.0	

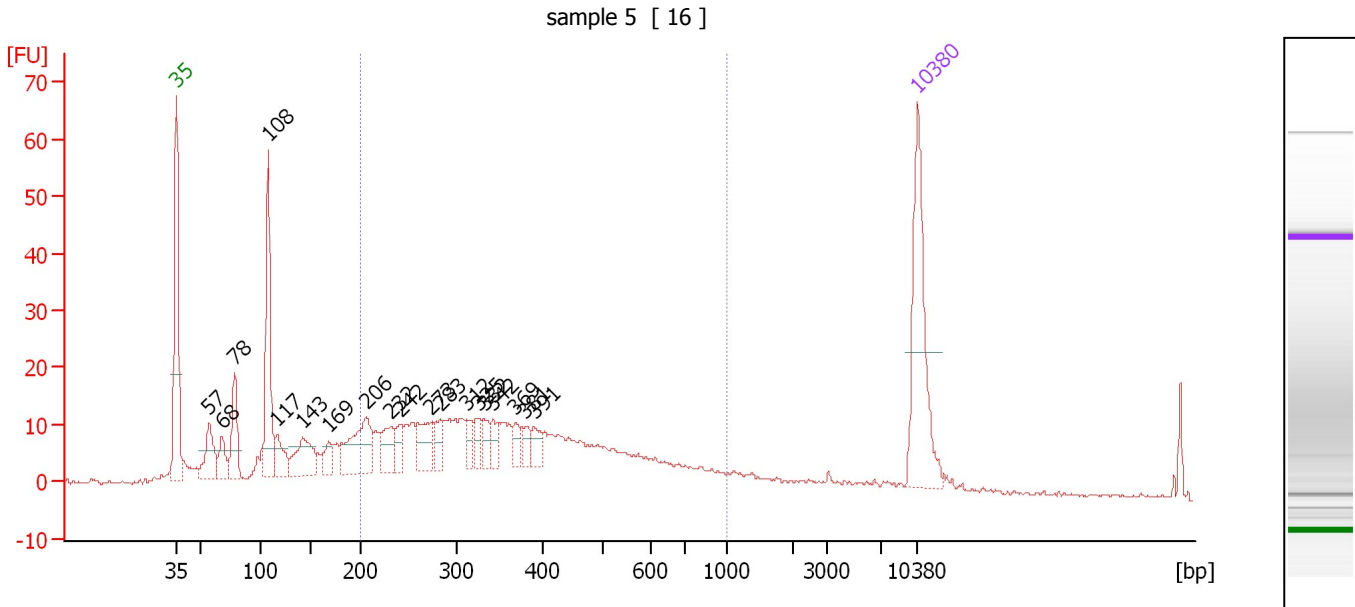
Region table for sample 4 : sample 4

From [bp]	To [bp]	Average Size [bp]	Molarity [pmol/l]	Conc. [pg/μl]	Corr. Area	% of Total	Size distribution in CV [%]	Color
200	1,000	432	715.9	172.98	161.4	82	36.5	Blue

Assay Class: High Sensitivity DNA Assay
 Data Path: C:\...ents and Settings\Bioanalyzer\2013-09-05\2013-09-05_003.xad

Created: 9/5/2013 2:14:25 PM
 Modified: 9/12/2013 5:56:37 PM

Electropherogram Summary Continued ...



Overall Results for sample 5 : sample 5

Number of peaks found: 19 Corr. Area 1: 377.6
 Noise: 0.3

Peak table for sample 5 : sample 5

Peak	Size [bp]	Conc. [pg/µl]	Molarity [pmol/l]	Observations
1	35	125.00	5,411.3	Lower Marker
2	57	40.90	1,092.5	
3	68	22.80	508.2	
4	78	44.25	855.8	
5	108	106.72	1,498.0	
6	117	25.58	331.3	
7	143	45.59	484.7	
8	169	16.89	151.7	
9	206	62.98	462.2	
10	232	27.86	182.2	
11	242	15.91	99.6	
12	273	32.40	180.0	
13	283	18.49	99.1	
14	312	12.40	60.3	
15	325	13.03	60.8	
16	332	13.38	61.1	
17	342	14.32	63.4	
18	369	10.15	41.7	
19	381	11.18	44.5	
20	391	11.91	46.2	
21	10,380	75.00	10.9	Upper Marker

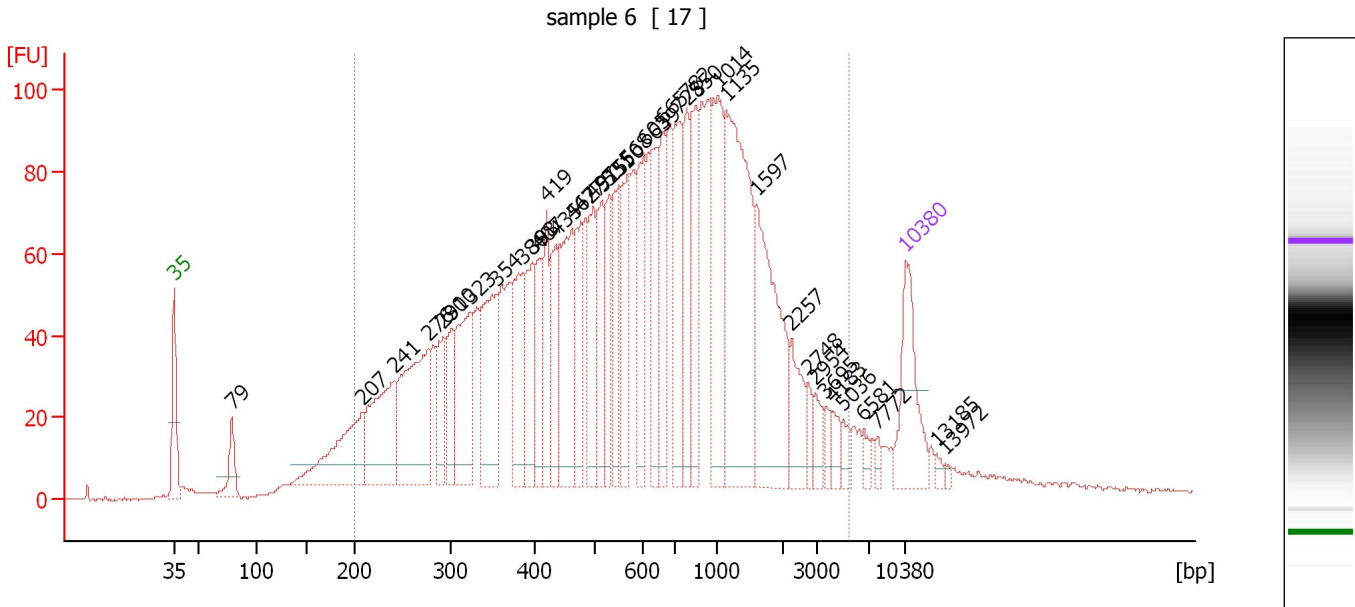
Region table for sample 5 : sample 5

From [bp]	To [bp]	Average Size [bp]	Molarity [pmol/l]	Conc. [pg/µl]	Corr. Area	% of Total	Size distribution in CV [%]	Color
200	1,000	384	2,677.6	570.38	377.6	59	39.3	Blue

Assay Class: High Sensitivity DNA Assay
 Data Path: C:\...ents and Settings\Bioanalyzer\2013-09-05\2013-09-05_003.xad

Created: 9/5/2013 2:14:25 PM
 Modified: 9/12/2013 5:56:37 PM

Electropherogram Summary Continued ...



Overall Results for sample 6 : sample 6

Number of peaks found: 39 Corr. Area 1: 3,126.7
 Noise: 0.3

Peak table for sample 6 : sample 6

Peak	Size [bp]	Conc. [pg/μl]	Molarity [pmol/l]	Observations
1	35	125.00	5,411.3	Lower Marker
2	79	48.13	928.6	
3	207	147.65	1,078.9	
4	241	157.45	991.2	
5	276	199.03	1,094.0	
6	291	67.83	352.9	
7	300	58.60	295.9	
8	323	127.46	597.8	
9	354	146.77	628.8	
10	386	105.32	413.2	
11	398	84.80	323.1	
12	407	68.65	255.3	
13	419	63.35	229.0	
14	435	74.94	260.9	
15	462	134.45	440.7	
16	477	84.37	267.7	
17	497	82.11	250.2	
18	515	77.48	227.8	
19	531	67.24	191.9	
20	550	72.50	199.8	
21	568	78.50	209.5	
22	605	94.83	237.6	
23	639	71.85	170.4	
24	665	80.21	182.7	
25	725	105.93	221.4	
26	782	75.56	146.4	

Assay Class: High Sensitivity DNA Assay
 Data Path: C:\...ents and Settings\Bioanalyzer\2013-09-05\2013-09-05_003.xad


Created: 9/5/2013 2:14:25 PM
 Modified: 9/12/2013 5:56:37 PM

Electropherogram Summary Continued ...

... Peak table for sample 6 : sample 6

Peak	Size [bp]	Conc. [pg/µl]	Molarity [pmol/l]	Observations
27	850	96.47	171.9	
28	1,014	127.17	190.1	
29	1,135	256.08	341.8	
30	1,597	167.98	159.4	
31	2,257	43.11	28.9	
32	2,748	14.63	8.1	
33	2,954	19.62	10.1	
34	3,695	11.47	4.7	
35	4,183	14.55	5.3	
36	5,036	13.43	4.0	
37	6,581	8.82	2.0	
38	7,772	6.60	1.3	
39	10,380	75.00	10.9	Upper Marker
40	13,185	0.00	0.0	
41	13,972	0.00	0.0	

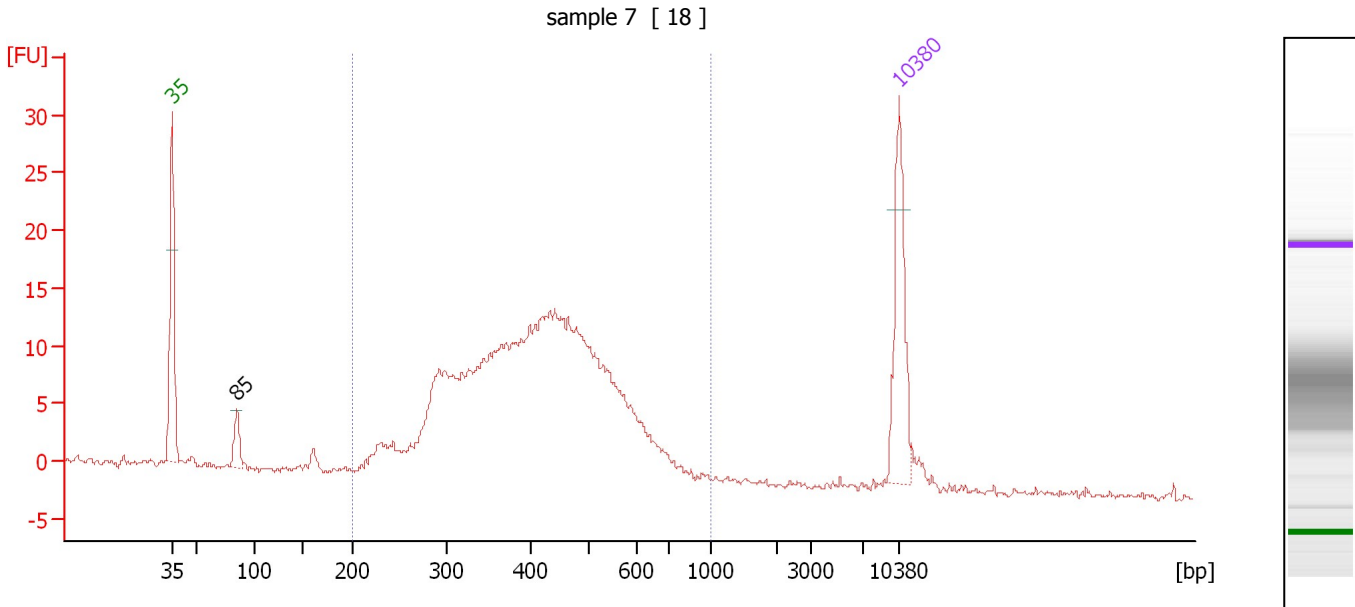
Region table for sample 6 : sample 6

From [bp]	To [bp]	Average Size [bp]	Molarity [pmol/l]	Conc. [pg/µl]	Corr. Area	% of Total	Size distribution in CV [%]	Color
200	5,480	840	12,184.6	3,810.12	3,126.7	92	88.1	

Assay Class: High Sensitivity DNA Assay
 Data Path: C:\...ents and Settings\Bioanalyzer\2013-09-05\2013-09-05_003.xad

Created: 9/5/2013 2:14:25 PM
 Modified: 9/12/2013 5:56:37 PM

Electropherogram Summary Continued ...



Overall Results for sample 7 : sample 7

Number of peaks found: 1 Corr. Area 1: 302.4
 Noise: 0.2

Peak table for sample 7 : sample 7

Peak	Size [bp]	Conc. [pg/μl]	Molarity [pmol/l]	Observations
1	35	125.00	5,411.3	Lower Marker
2	85	28.28	505.1	
3	10,380	75.00	10.9	Upper Marker

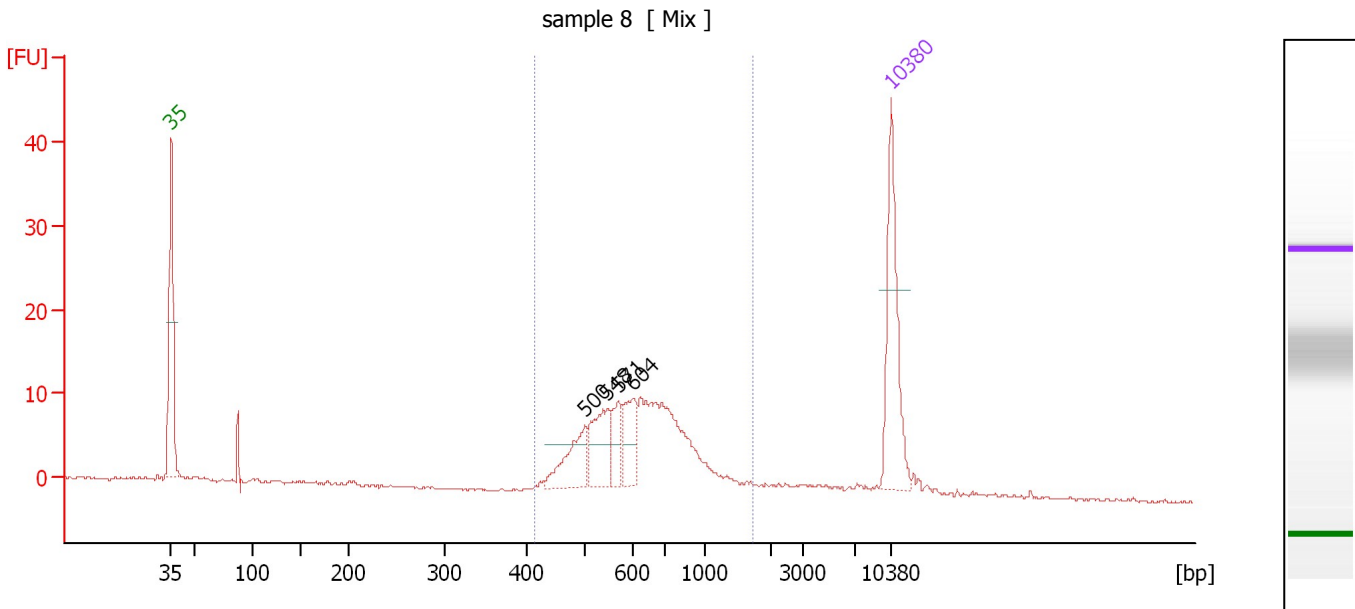
Region table for sample 7 : sample 7

From [bp]	To [bp]	Average Size [bp]	Molarity [pmol/l]	Conc. [pg/μl]	Corr. Area	% of Total	Size distribution in CV [%]	Color
200	1,000	423	3,903.4	994.86	302.4	95	25.7	Blue

Assay Class: High Sensitivity DNA Assay
 Data Path: C:\...ents and Settings\Bioanalyzer\2013-09-05\2013-09-05_003.xad

Created: 9/5/2013 2:14:25 PM
 Modified: 9/12/2013 5:56:37 PM

Electropherogram Summary Continued ...



Overall Results for sample 8 : sample 8

Number of peaks found: 4 Corr. Area 1: 142.8
 Noise: 0.1

Peak table for sample 8 : sample 8

Peak	Size [bp]	Conc. [pg/μl]	Molarity [pmol/l]	Observations
1	35	125.00	5,411.3	Lower Marker
2	500	45.75	138.6	
3	548	48.70	134.5	
4	571	23.53	62.4	
5	604	36.15	90.7	
6	10,380	75.00	10.9	Upper Marker

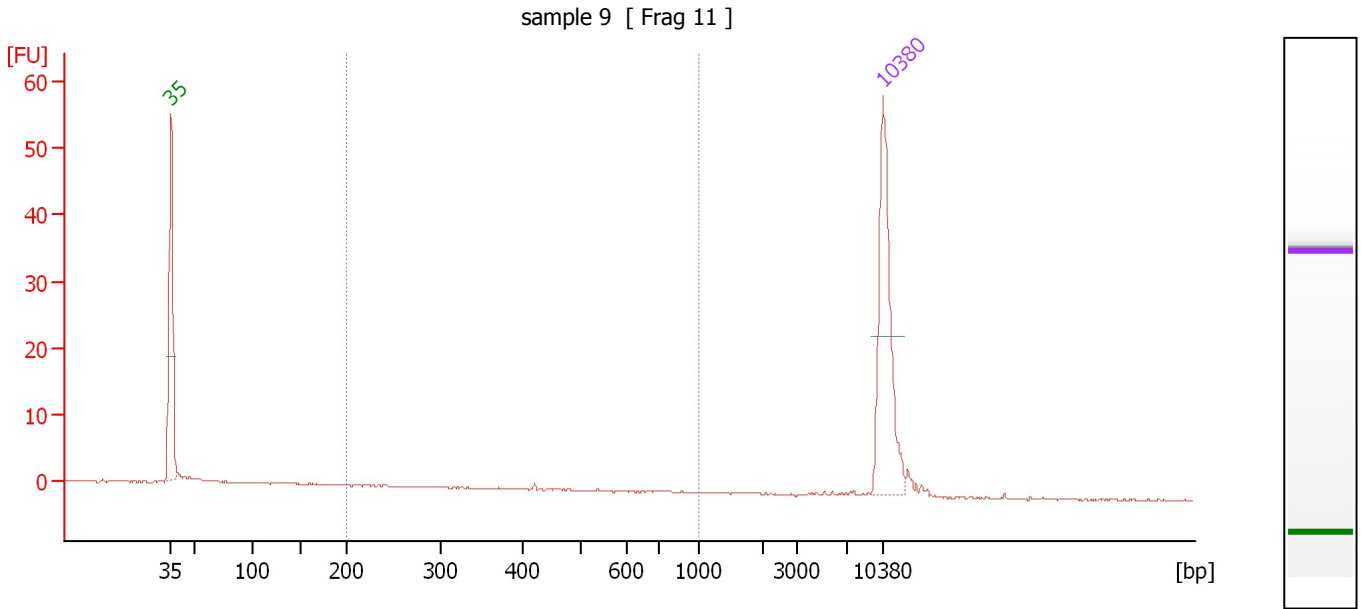
Region table for sample 8 : sample 8

From [bp]	To [bp]	Average Size [bp]	Molarity [pmol/l]	Conc. [pg/μl]	Corr. Area	% of Total	Size distribution in CV [%]	Color
413	1,736	675	761.9	311.69	142.8	83	31.5	Blue

Assay Class: High Sensitivity DNA Assay
 Data Path: C:\...ents and Settings\Bioanalyzer\2013-09-05\2013-09-05_003.xad

Created: 9/5/2013 2:14:25 PM
 Modified: 9/12/2013 5:56:37 PM

Electropherogram Summary Continued ...



Overall Results for sample 9 : sample 9

Number of peaks found: 0 Corr. Area 1: 1.2
 Noise: 0.1

Peak table for sample 9 : sample 9

Peak	Size [bp]	Conc. [pg/μl]	Molarity [pmol/l]	Observations
1	35	125.00	5,411.3	Lower Marker
2	10,380	75.00	10.9	Upper Marker

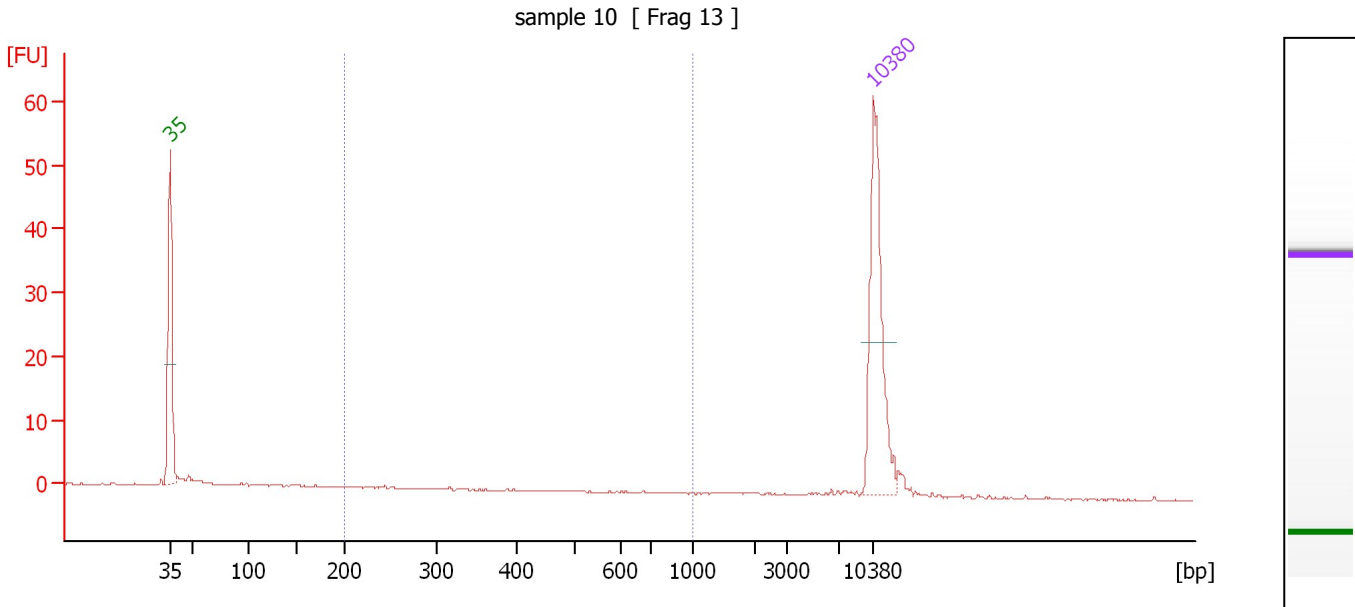
Region table for sample 9 : sample 9

From [bp]	To [bp]	Average Size [bp]	Molarity [pmol/l]	Conc. [pg/μl]	Corr. Area	% of Total	Size distribution in CV [%]	Color
200	1,000	344	11.0	2.05	1.2	7	44.1	Blue

Assay Class: High Sensitivity DNA Assay
 Data Path: C:\...ents and Settings\Bioanalyzer\2013-09-05\2013-09-05_003.xad

Created: 9/5/2013 2:14:25 PM
 Modified: 9/12/2013 5:56:37 PM

Electropherogram Summary Continued ...



Overall Results for sample 10 : sample 10

Number of peaks found: 0 Corr. Area 1: 5.2
 Noise: 0.1

Peak table for sample 10 : sample 10

Peak	Size [bp]	Conc. [pg/μl]	Molarity [pmol/l]	Observations
1	35	125.00	5,411.3	Lower Marker
2	10,380	75.00	10.9	Upper Marker

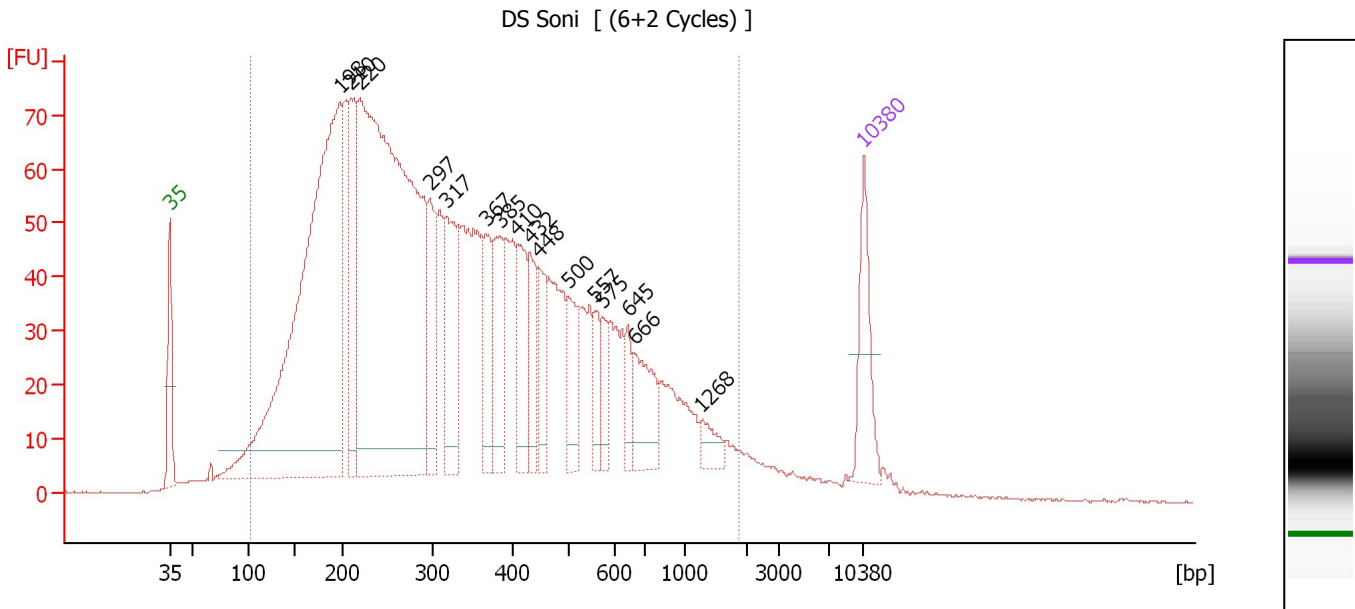
Region table for sample 10 : sample 10

From [bp]	To [bp]	Average Size [bp]	Molarity [pmol/l]	Conc. [pg/μl]	Corr. Area	% of Total	Size distribution in CV [%]	Color
200	1,000	385	41.3	8.37	5.2	17	45.2	Blue

Assay Class: High Sensitivity DNA Assay
 Data Path: C:\...ents and Settings\Bioanalyzer\2013-09-05\2013-09-05_003.xad

Created: 9/5/2013 2:14:25 PM
 Modified: 9/12/2013 5:56:37 PM

Electropherogram Summary Continued ...



Overall Results for sample 11 : DS Soni

Number of peaks found: 16 Corr. Area 1: 2,727.7
 Noise: 0.2

Peak table for sample 11 : DS Soni

Peak	Size [bp]	Conc. [pg/μl]	Molarity [pmol/l]	Observations
1	35	125.00	5,411.3	Lower Marker
2	198	1,126.81	8,614.7	
3	210	185.87	1,338.3	
4	220	1,371.43	9,453.2	
5	297	121.49	619.5	
6	317	172.52	825.0	
7	367	107.00	441.4	
8	385	102.19	401.7	
9	410	93.48	345.7	
10	432	69.89	245.4	
11	448	68.64	232.3	
12	500	66.74	202.4	
13	557	39.52	107.5	
14	575	37.25	98.2	
15	645	31.57	74.1	
16	666	86.43	196.7	
17	1,268	23.89	28.5	
18	10,380	75.00	10.9	Upper Marker

Region table for sample 11 : DS Soni

From [bp]	To [bp]	Average Size [bp]	Molarity [pmol/l]	Conc. [pg/μl]	Corr. Area	% of Total	Size distribution in CV [%]	Color
102	1,872	385	30,501.5	5,190.19	2,727.7	96	67.4	Blue

Assay Class: High Sensitivity DNA Assay
Data Path: C:\...ents and Settings\Bioanalyzer\2013-09-05\2013-09-05_003.xad

Created: 9/5/2013 2:14:25 PM
Modified: 9/12/2013 5:56:37 PM

Gel Image