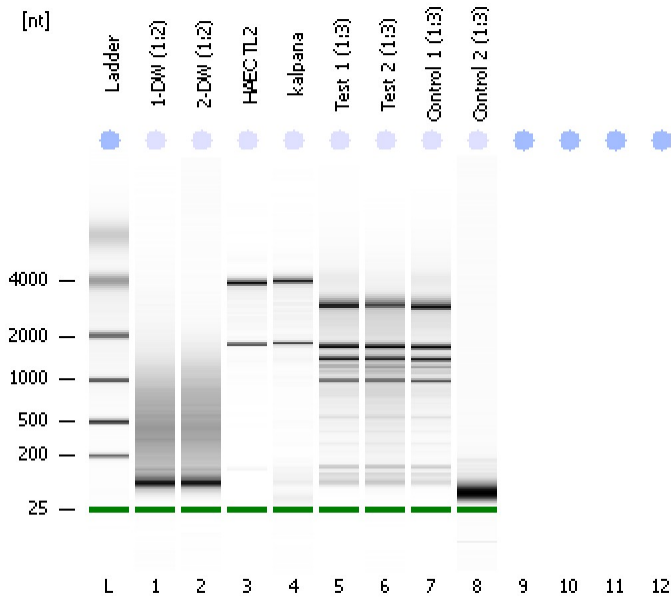


Assay Class: Eukaryote Total RNA Nano
Data Path: C:\...ents and Settings\Bioanalyzer\2013-09-05\2013-09-05_004.xad

Created: 9/5/2013 3:32:13 PM
Modified: 9/5/2013 4:53:50 PM

Electrophoresis File Run Summary



Instrument Information:

Instrument Name: DE13701086 Firmware: C.01.069
Serial#: DE13701086 Type: G2938B

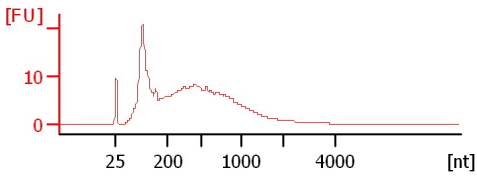
Assay Information:

Assay Origin Path: C:\Program Files\Agilent\2100 bioanalyzer\2100 expert\assays\RNA\Eukaryote Total RNA Nano Series II.xsy
Assay Class: Eukaryote Total RNA Nano
Version: 2.6
Assay Comments: Total RNA Analysis ng sensitivity (Eukaryote)
© Copyright 2003 - 2009 Agilent Technologies, Inc.

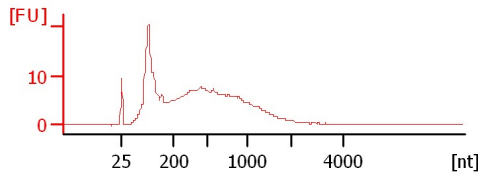
Chip Information:

Chip Lot #:
Reagent Kit Lot #:
Chip Comments:

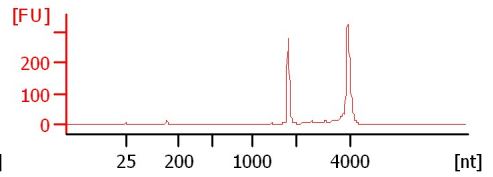
1-DW (1:2)
RIN: 2



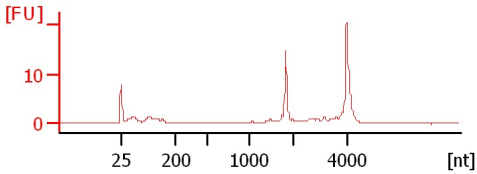
2-DW (1:2)
RIN: 1.90



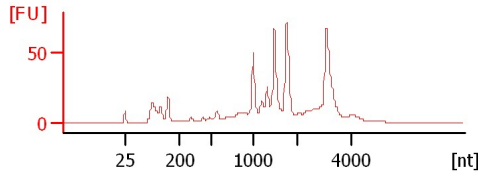
HAEC TL2
RIN: 9.90



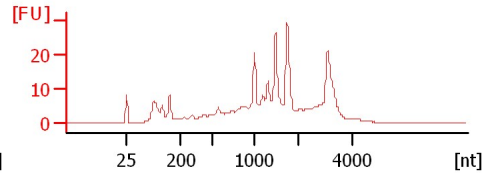
kalpana
RIN: 9.50



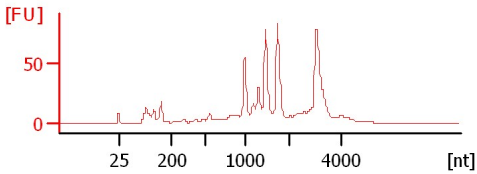
Test 1 (1:3)
RIN: 5.40



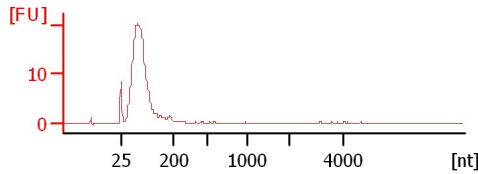
Test 2 (1:3)
RIN: 6.30



Control 1 (1:3)
RIN: 6.40



Control 2 (1:3)
RIN: 2.60



Assay Class: Eukaryote Total RNA Nano
 Data Path: C:\...ents and Settings\Bioanalyzer\2013-09-05\2013-09-05_004.xad

Created: 9/5/2013 3:32:13 PM
 Modified: 9/5/2013 4:53:50 PM

Electrophoresis File Run Summary (Chip Summary)

Sample Name	Sample Comment	Status	Result Label	Result Color
1-DW (1:2)		✓	RIN:2	
2-DW (1:2)		✓	RIN: 1.90	
HAEC TL2		✓	RIN: 9.90	
kalpana		✓	RIN: 9.50	
Test 1 (1:3)		✓	RIN: 5.40	
Test 2 (1:3)		✓	RIN: 6.30	
Control 1 (1:3)		✓	RIN: 6.40	
Control 2 (1:3)		✓	RIN: 2.60	
Ladder		✓	All Other Samples	

Chip Lot # **Reagent Kit Lot #**

Chip Comments :

Assay Class: Eukaryote Total RNA Nano
Data Path: C:\...ents and Settings\Bioanalyzer\2013-09-05\2013-09-05_004.xad

Created: 9/5/2013 3:32:13 PM
Modified: 9/5/2013 4:53:50 PM

Electrophoresis Assay Details

General Analysis Settings

Number of Available Sample and Ladder Wells (Max.) : 13
Minimum Visible Range [s] : 17
Maximum Visible Range [s] : 70
Start Analysis Time Range [s] : 19
End Analysis Time Range [s] : 69
Ladder Concentration [ng/ μ l] : 150
Lower Marker Concentration [ng/ μ l] : 0
Upper Marker Concentration [ng/ μ l] : 0
Used Lower Marker for Quantitation
Standard Curve Fit is Logarithmic
Show Data Aligned to Lower Marker

Integrator Settings

Integration Start Time [s] : 19
Integration End Time [s] : 69
Slope Threshold : 0.6
Height Threshold [FU] : 0.5
Area Threshold : 0.2
Width Threshold [s] : 0.5
Baseline Plateau [s] : 6

Filter Settings

Filter Width [s] : 0.5
Polynomial Order : 4

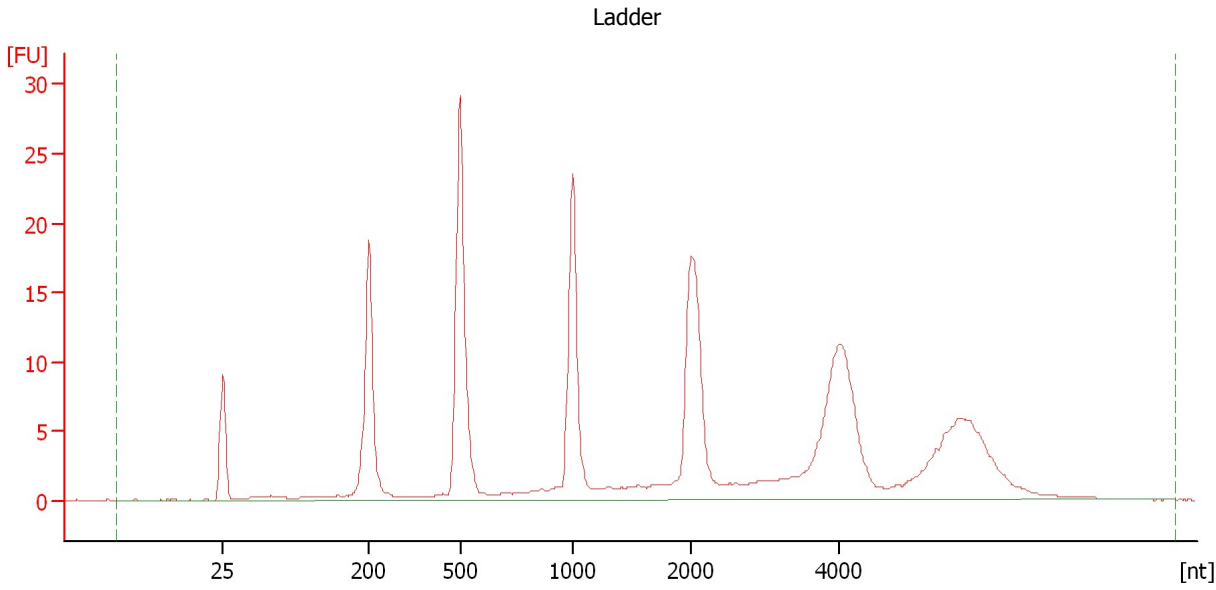
Ladder

Ladder Peak	Size
1	25
2	200
3	500
4	1000
5	2000
6	4000

Assay Class: Eukaryote Total RNA Nano
Data Path: C:\...ents and Settings\Bioanalyzer\2013-09-05\2013-09-05_004.xad

Created: 9/5/2013 3:32:13 PM
Modified: 9/5/2013 4:53:50 PM

Electropherogram Summary



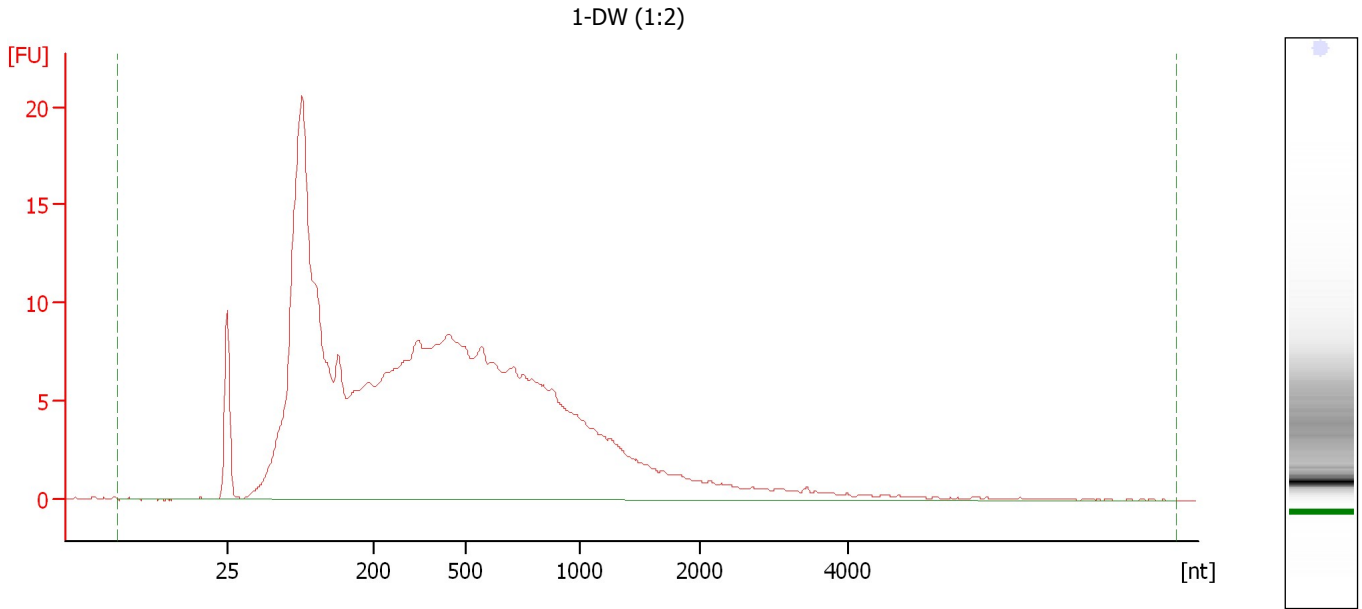
Overall Results for Ladder

RNA Area:	231.8	Result Flagging Color:	
RNA Concentration:	150 ng/μl	Result Flagging Label:	All Other Samples

Assay Class: Eukaryote Total RNA Nano
Data Path: C:\...ents and Settings\Bioanalyzer\2013-09-05\2013-09-05_004.xad

Created: 9/5/2013 3:32:13 PM
Modified: 9/5/2013 4:53:50 PM

Electropherogram Summary Continued ...



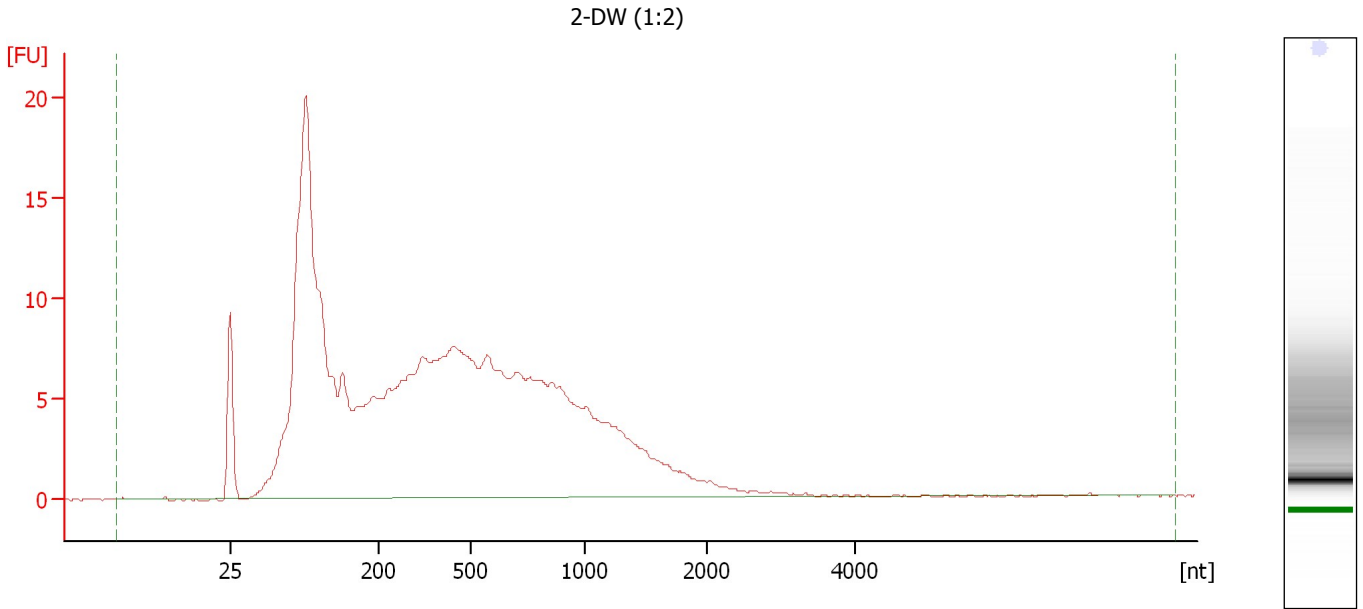
Overall Results for sample 1 : 1-DW (1:2)

RNA Area:	358.4	RNA Integrity Number (RIN):	2 (B.02.08)
RNA Concentration:	232 ng/μl	Result Flagging Color:	
rRNA Ratio [28s / 18s]:	0.0	Result Flagging Label:	RIN:2

Assay Class: Eukaryote Total RNA Nano
Data Path: C:\...ents and Settings\Bioanalyzer\2013-09-05\2013-09-05_004.xad

Created: 9/5/2013 3:32:13 PM
Modified: 9/5/2013 4:53:50 PM

Electropherogram Summary Continued ...



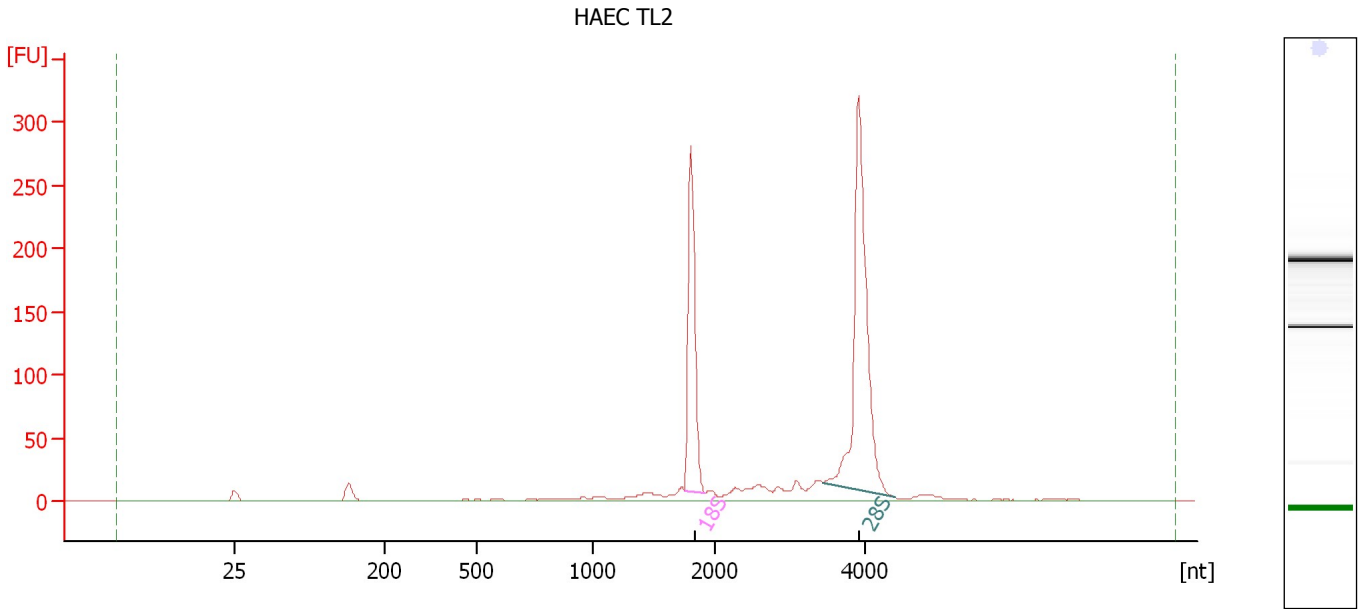
Overall Results for sample 2 : 2-DW (1:2)

RNA Area:	327.9	RNA Integrity Number (RIN):	1.9 (B.02.08)
RNA Concentration:	212 ng/μl	Result Flagging Color:	
rRNA Ratio [28s / 18s]:	0.0	Result Flagging Label:	RIN: 1.90

Assay Class: Eukaryote Total RNA Nano
Data Path: C:\...ents and Settings\Bioanalyzer\2013-09-05\2013-09-05_004.xad

Created: 9/5/2013 3:32:13 PM
Modified: 9/5/2013 4:53:50 PM

Electropherogram Summary Continued ...



Overall Results for sample 3 : HAEC TL2

RNA Area: 873.8 RNA Integrity Number (RIN): 9.9 (B.02.08)
RNA Concentration: 565 ng/μl Result Flagging Color:
rRNA Ratio [28s / 18s]: 1.9 Result Flagging Label: RIN: 9.90

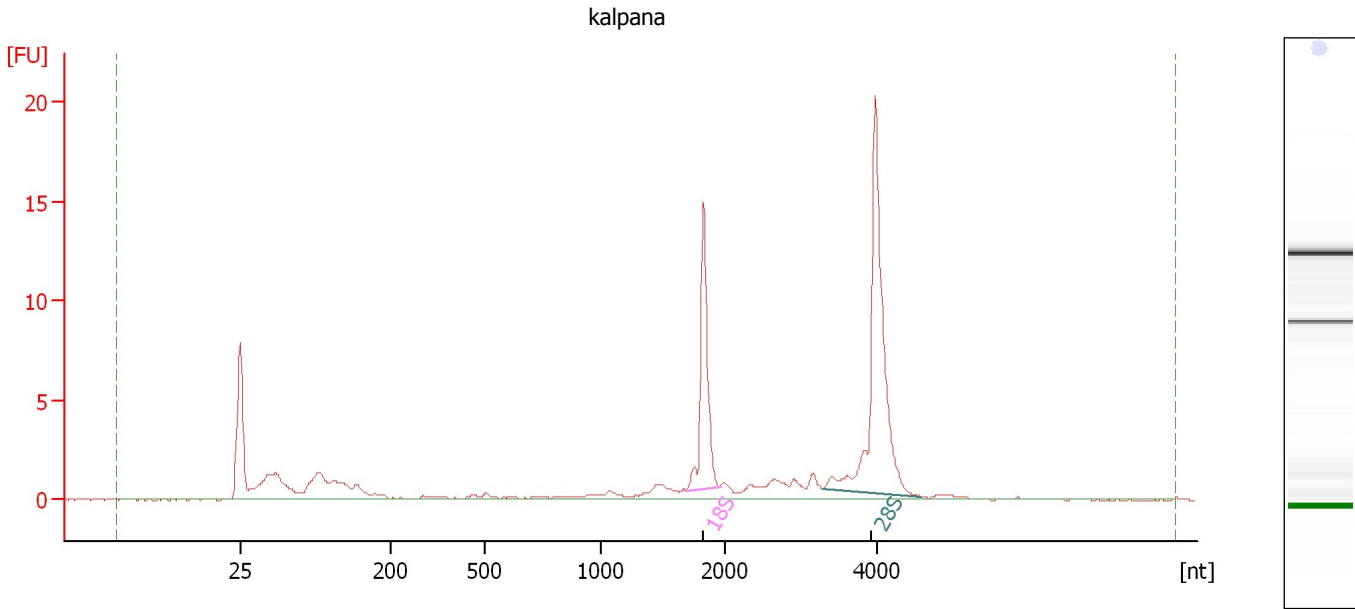
Fragment table for sample 3 : HAEC TL2

Name	Start Size [nt]	End Size [nt]	Area	% of total Area
18S	1,754	1,930	204.9	23.4
28S	3,447	4,411	382.3	43.8

Assay Class: Eukaryote Total RNA Nano
Data Path: C:\...ents and Settings\Bioanalyzer\2013-09-05\2013-09-05_004.xad

Created: 9/5/2013 3:32:13 PM
Modified: 9/5/2013 4:53:50 PM

Electropherogram Summary Continued ...



Overall Results for sample 4 : kalpana

RNA Area: 66.0 RNA Integrity Number (RIN): 9.5 (B.02.08)
RNA Concentration: 43 ng/μl Result Flagging Color:
rRNA Ratio [28s / 18s]: 2.1 Result Flagging Label: RIN: 9.50

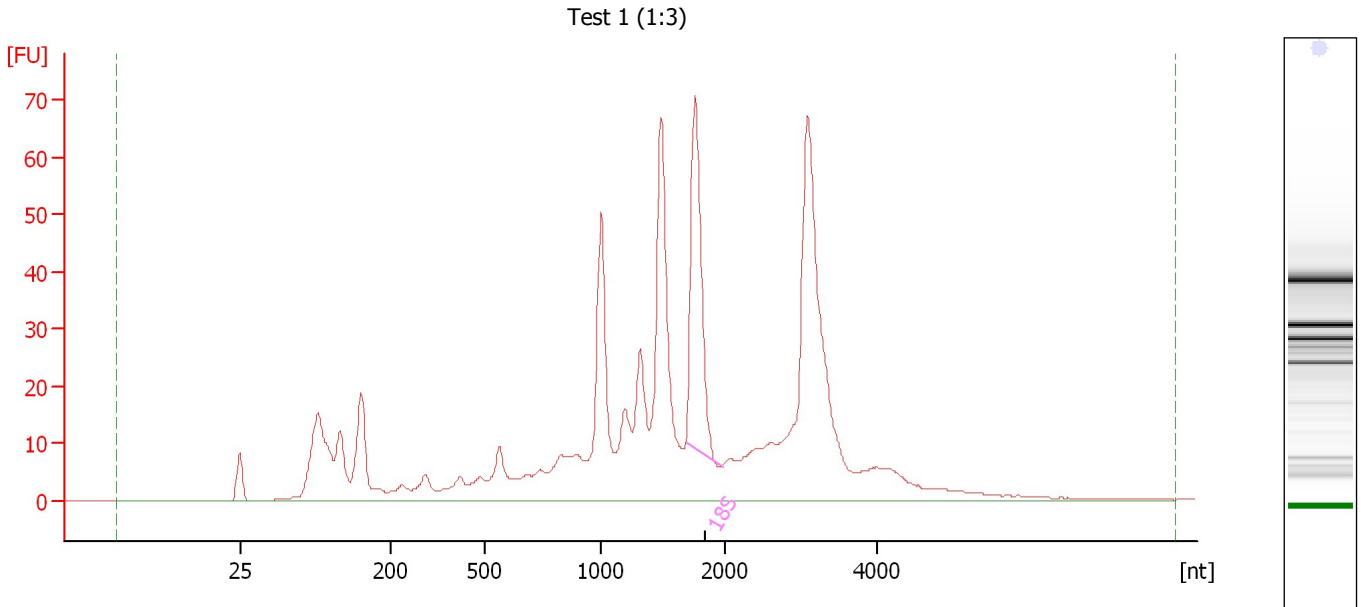
Fragment table for sample 4 : kalpana

Name	Start Size [nt]	End Size [nt]	Area	% of total Area
18S	1,691	1,970	11.4	17.3
28S	3,300	4,577	23.9	36.1

Assay Class: Eukaryote Total RNA Nano
Data Path: C:\...ents and Settings\Bioanalyzer\2013-09-05\2013-09-05_004.xad

Created: 9/5/2013 3:32:13 PM
Modified: 9/5/2013 4:53:50 PM

Electropherogram Summary Continued ...



Overall Results for sample 5 : Test 1 (1:3)

RNA Area:	770.1	RNA Integrity Number (RIN):	5.4 (B.02.08, Anomaly Threshold(s) manually adapted)
RNA Concentration:	498 ng/μl	Result Flagging Color:	
rRNA Ratio [28s / 18s]:	0.0	Result Flagging Label:	RIN: 5.40

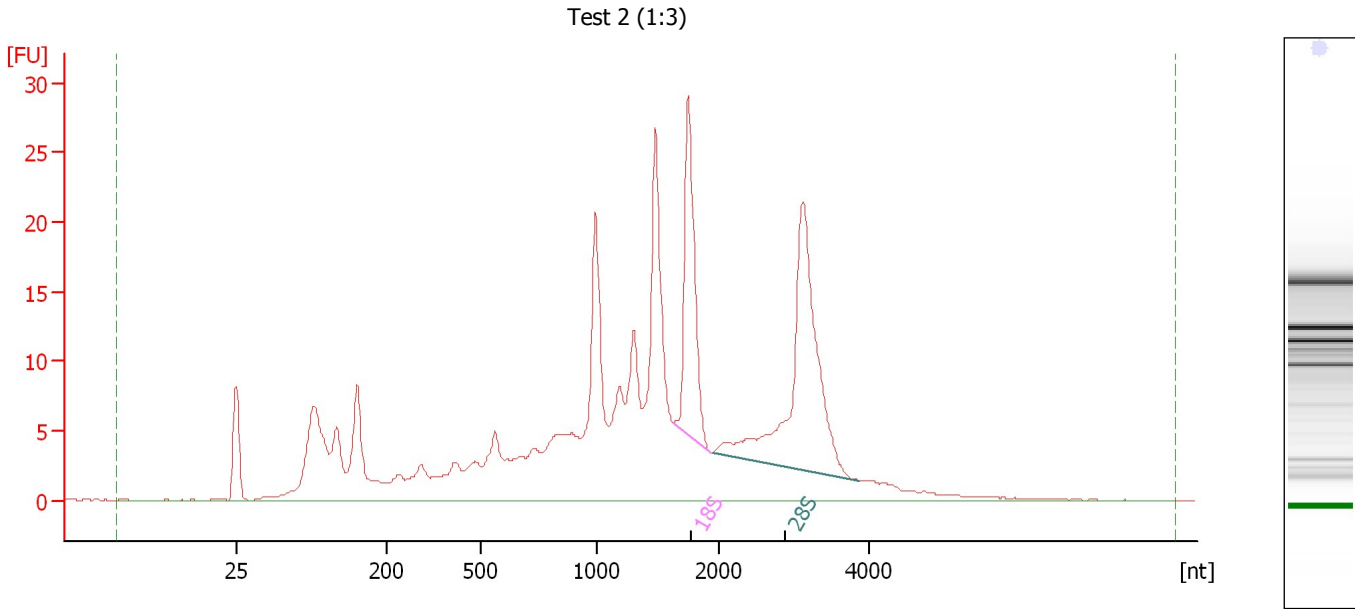
Fragment table for sample 5 : Test 1 (1:3)

Name	Start Size [nt]	End Size [nt]	Area	% of total Area
18S	1,687	1,982	74.4	9.7

Assay Class: Eukaryote Total RNA Nano
 Data Path: C:\...ents and Settings\Bioanalyzer\2013-09-05\2013-09-05_004.xad

Created: 9/5/2013 3:32:13 PM
 Modified: 9/5/2013 4:53:50 PM

Electropherogram Summary Continued ...



Overall Results for sample 6 : Test 2 (1:3)

RNA Area:	365.5	RNA Integrity Number (RIN):	6.3 (B.02.08, Anomaly Threshold(s) manually adapted)
RNA Concentration:	236 ng/μl	Result Flagging Color:	
rRNA Ratio [28s / 18s]:	1.8	Result Flagging Label:	RIN: 6.30

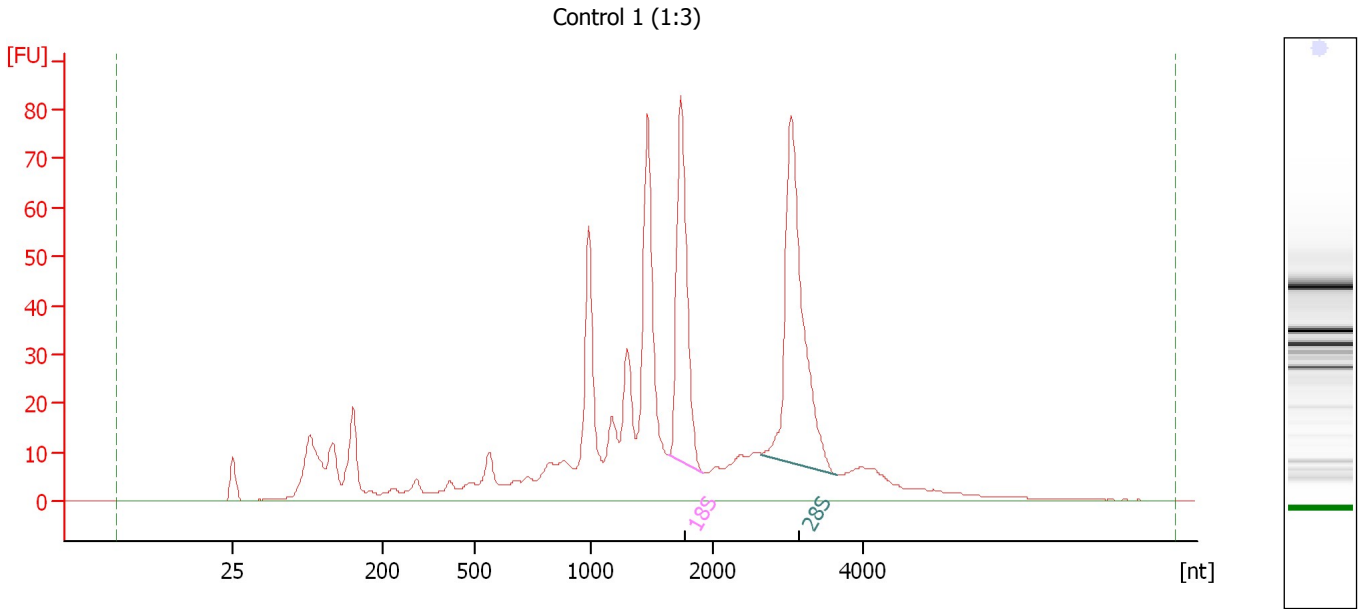
Fragment table for sample 6 : Test 2 (1:3)

Name	Start Size [nt]	End Size [nt]	Area	% of total Area
18S	1,634	1,932	28.3	7.7
28S	1,950	3,854	51.4	14.1

Assay Class: Eukaryote Total RNA Nano
Data Path: C:\...ents and Settings\Bioanalyzer\2013-09-05\2013-09-05_004.xad

Created: 9/5/2013 3:32:13 PM
Modified: 9/5/2013 4:53:50 PM

Electropherogram Summary Continued ...



Overall Results for sample 7 : Control 1 (1:3)

RNA Area:	819.6	RNA Integrity Number (RIN):	6.4 (B.02.08, Anomaly Threshold(s) manually adapted)
RNA Concentration:	530 ng/μl		
rRNA Ratio [28s / 18s]:	1.4	Result Flagging Color:	
		Result Flagging Label:	RIN: 6.40

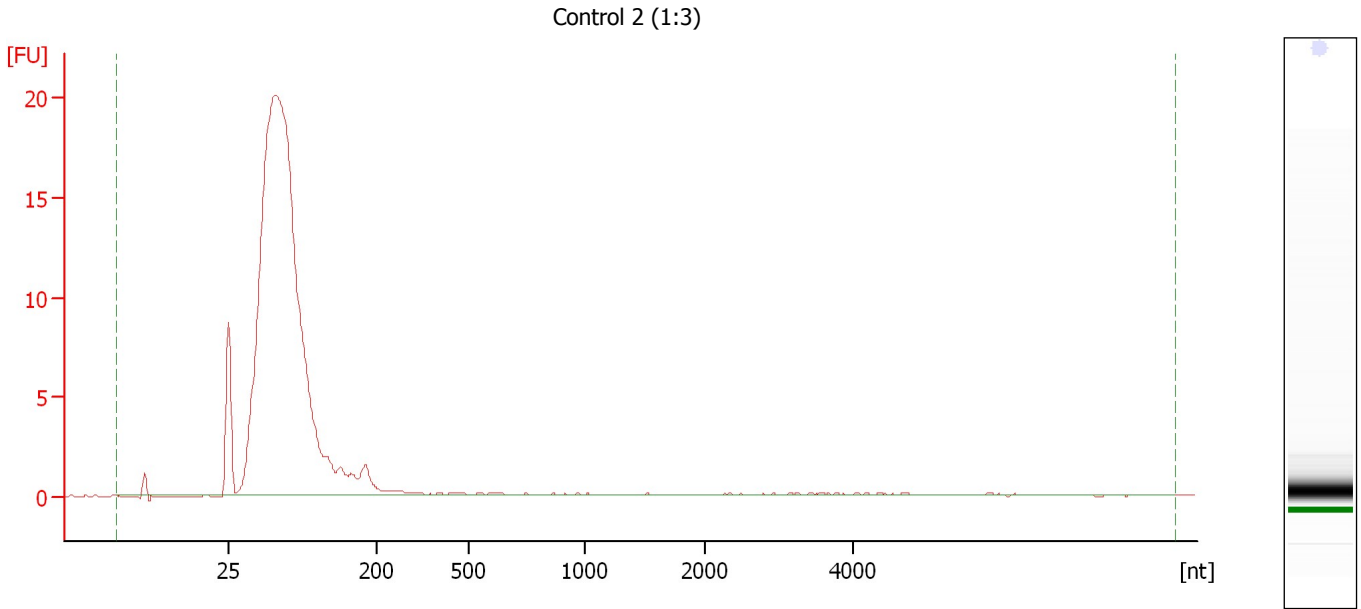
Fragment table for sample 7 : Control 1 (1:3)

Name	Start Size [nt]	End Size [nt]	Area	% of total Area
18S	1,638	1,920	90.3	11.0
28S	2,653	3,661	129.0	15.7

Assay Class: Eukaryote Total RNA Nano
Data Path: C:\...ents and Settings\Bioanalyzer\2013-09-05\2013-09-05_004.xad

Created: 9/5/2013 3:32:13 PM
Modified: 9/5/2013 4:53:50 PM

Electropherogram Summary Continued ...



Overall Results for sample 8 : Control 2 (1:3)

RNA Area:	164.7	RNA Integrity Number (RIN):	2.6 (B.02.08)
RNA Concentration:	107 ng/ μ l	Result Flagging Color:	
rRNA Ratio [28s / 18s]:	0.0	Result Flagging Label:	RIN: 2.60

Assay Class: Eukaryote Total RNA Nano
Data Path: C:\...ents and Settings\Bioanalyzer\2013-09-05\2013-09-05_004.xad

Created: 9/5/2013 3:32:13 PM
Modified: 9/5/2013 4:53:50 PM

Invalid Samples

Sample 9 has not been run, no results available.

Sample 10 has not been run, no results available.

Sample 11 has not been run, no results available.

Sample 12 has not been run, no results available.