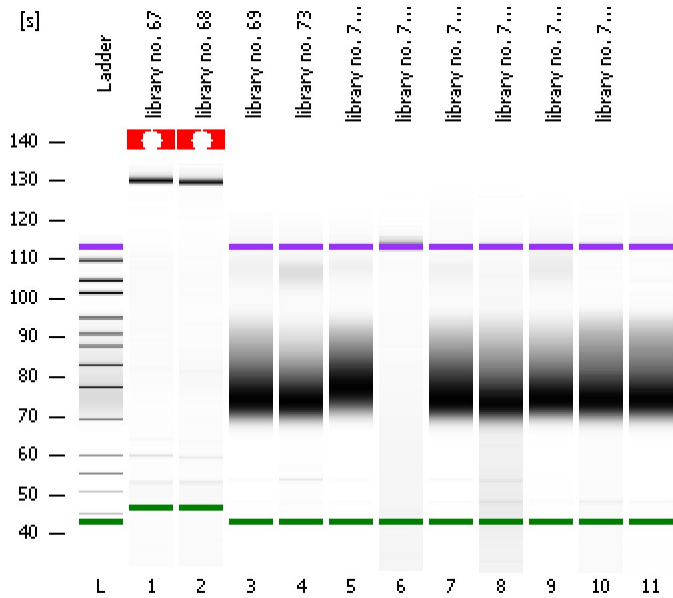


Assay Class: High Sensitivity DNA Assay  
Data Path: C:\...ents and Settings\Bioanalyzer\2013-09-06\2013-09-06\_003.xad

Created: 9/6/2013 11:04:13 AM  
Modified: 9/6/2013 11:45:00 AM

**Electrophoresis File Run Summary**



Instrument Information:

Instrument Name: DE13701086      Firmware: C.01.069  
Serial#: DE13701086      Type: G2938B

Assay Information:

Assay Origin Path: C:\Program Files\Agilent\2100 bioanalyzer\2100 expert\assays\dsDNA\High Sensitivity DNA.xsy  
Assay Class: High Sensitivity DNA Assay  
Version: 1.03  
Assay Comments: Copyright © 2003-2010 Agilent Technologies

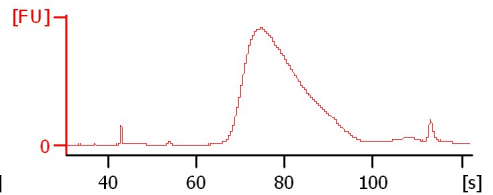
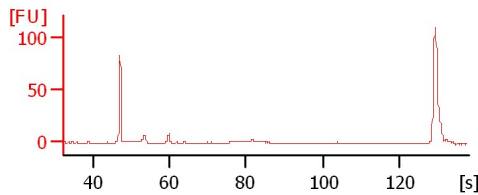
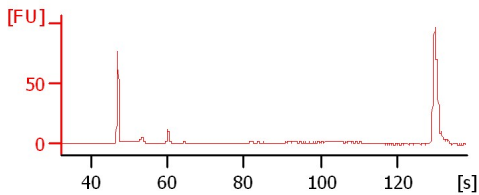
Chip Information:

Chip Lot #:   
Reagent Kit Lot #:   
Chip Comments:

library no. 67

library no. 68

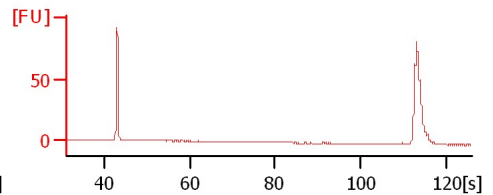
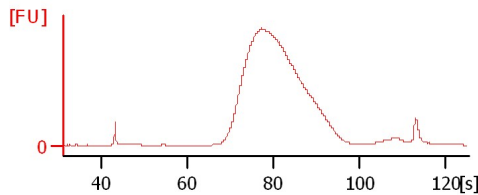
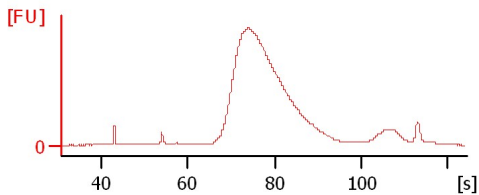
library no. 69



library no. 73

library no. 74 - doubt on numbering

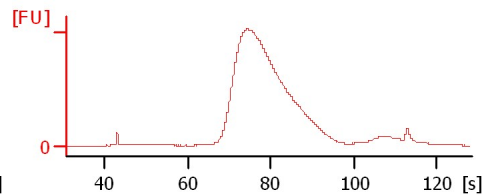
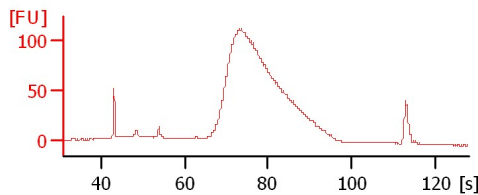
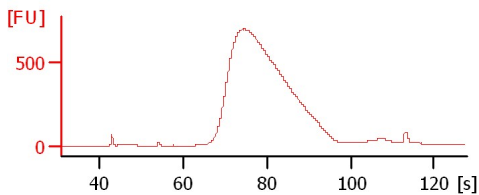
library no. 75 - doubt on numbering



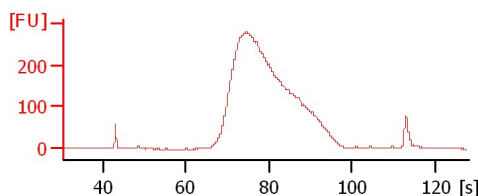
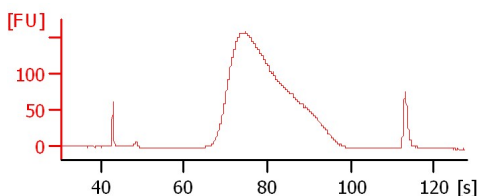
library no. 76-doubt on numbering

library no. 77- doubt on numbering

library no. 78-doubt on numbering



library no. 79-doubt on numbering



Assay Class: High Sensitivity DNA Assay  
Data Path: C:\...ents and Settings\Bioanalyzer\2013-09-06\2013-09-06\_003.xad

Created: 9/6/2013 11:04:13 AM  
Modified: 9/6/2013 11:45:00 AM

**Electrophoresis File Run Summary (Chip Summary)**

Sample Name	Sample Comment	Rest. Digest	Status	Observation	Result Label	Result Color
library no. 67		<input type="checkbox"/>	✓			
library no. 68		<input type="checkbox"/>	✓			
library no. 69		<input type="checkbox"/>	✓			
library no. 73		<input type="checkbox"/>	✓			
library no. 74 - doubt on numbering		<input type="checkbox"/>	✓			
library no. 75 - doubt on numbering		<input type="checkbox"/>	✓			
library no. 76-doubt on numbering		<input type="checkbox"/>	✓			
library no. 77- doubt on numbering		<input type="checkbox"/>	✓			
library no. 78-doubt on numbering		<input type="checkbox"/>	✓			
library no. 79-doubt on numbering		<input type="checkbox"/>	✓			
Ladder		<input type="checkbox"/>	✓			

**Chip Lot #**

**Reagent Kit Lot #**

**Chip Comments :**

Assay Class: High Sensitivity DNA Assay  
Data Path: C:\...ents and Settings\Bioanalyzer\2013-09-06\2013-09-06\_003.xad

Created: 9/6/2013 11:04:13 AM  
Modified: 9/6/2013 11:45:00 AM

**Electrophoresis Assay Details**

**General Analysis Settings**

Number of Available Sample and Ladder Wells (Max.) : 12  
Minimum Visible Range [s] : 32  
Maximum Visible Range [s] : 138  
Start Analysis Time Range [s] : 33  
End Analysis Time Range [s] : 137.5  
Ladder Concentration [pg/μl] : 1950  
Uses Standard Area for Ladder Fragments  
Lower Marker Concentration [pg/μl] : 125  
Upper Marker Concentration [pg/μl] : 75  
Used Upper Marker for Quantitation  
Standard Curve Fit is Point to Point  
Show Data Aligned to Lower and Upper Marker

**Integrator Settings**

Integration Start Time [s] : 33.05  
Integration End Time [s] : 137  
Slope Threshold : 0.8  
Height Threshold [FU] : 5  
Area Threshold : 0.1  
Width Threshold [s] : 0.6  
Baseline Plateau [s] : 0.5

**Filter Settings**

Filter Width [s] : 0.5  
Polynomial Order : 4

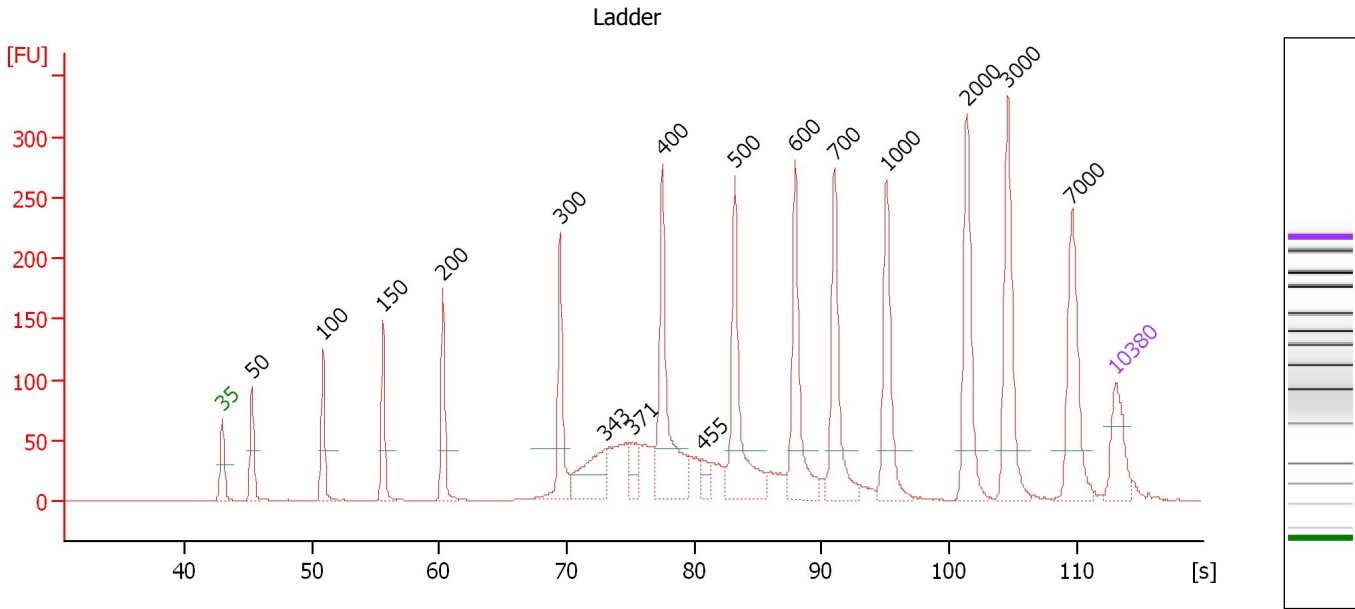
**Ladder**

Ladder Peak	Size	Area
1	35	160
2	50	210
3	100	208
4	150	221
5	200	242
6	300	270
7	400	305
8	500	306
9	600	336
10	700	321
11	1000	366
12	2000	413
13	3000	411
14	7000	400
15	10380	214

Assay Class: High Sensitivity DNA Assay  
 Data Path: C:\...ents and Settings\Bioanalyzer\2013-09-06\2013-09-06\_003.xad

Created: 9/6/2013 11:04:13 AM  
 Modified: 9/6/2013 11:45:00 AM

**Electropherogram Summary**



**Overall Results for Ladder**

Noise: 0.2

**Peak table for Ladder**

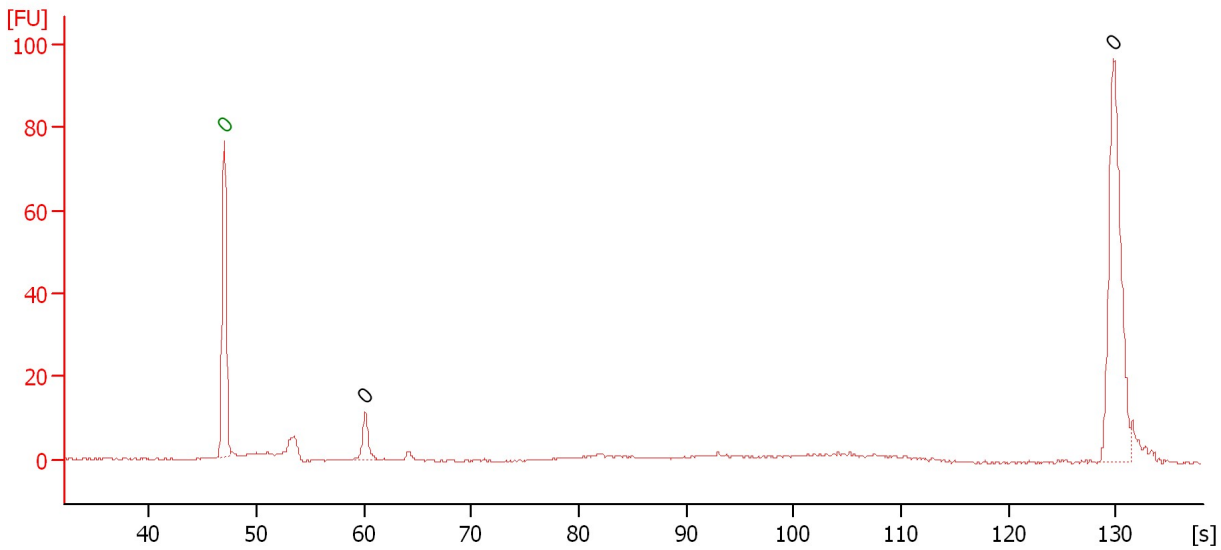
Peak	Size [bp]	Conc. [pg/μl]	Molarity [pmol/l]	Observations
1	35	125.00	5,411.3	Lower Marker
2	50	150.00	4,545.5	Ladder Peak
3	100	150.00	2,272.7	Ladder Peak
4	150	150.00	1,515.2	Ladder Peak
5	200	150.00	1,136.4	Ladder Peak
6	300	150.00	757.6	Ladder Peak
7	343	0.00	0.0	
8	371	0.00	0.0	
9	400	150.00	568.2	Ladder Peak
10	455	0.00	0.0	
11	500	150.00	454.5	Ladder Peak
12	600	150.00	378.8	Ladder Peak
13	700	150.00	324.7	Ladder Peak
14	1,000	150.00	227.3	Ladder Peak
15	2,000	150.00	113.6	Ladder Peak
16	3,000	150.00	75.8	Ladder Peak
17	7,000	150.00	32.5	Ladder Peak
18	10,380	75.00	10.9	Upper Marker

Assay Class: High Sensitivity DNA Assay  
Data Path: C:\...ents and Settings\Bioanalyzer\2013-09-06\2013-09-06\_003.xad

Created: 9/6/2013 11:04:13 AM  
Modified: 9/6/2013 11:45:00 AM

**Electropherogram Summary Continued ...**

library no. 67



**Overall Results for sample 1 : library no. 67**

Number of peaks found: 2                      Noise: 0.2

**Peak table for sample 1 : library no. 67**

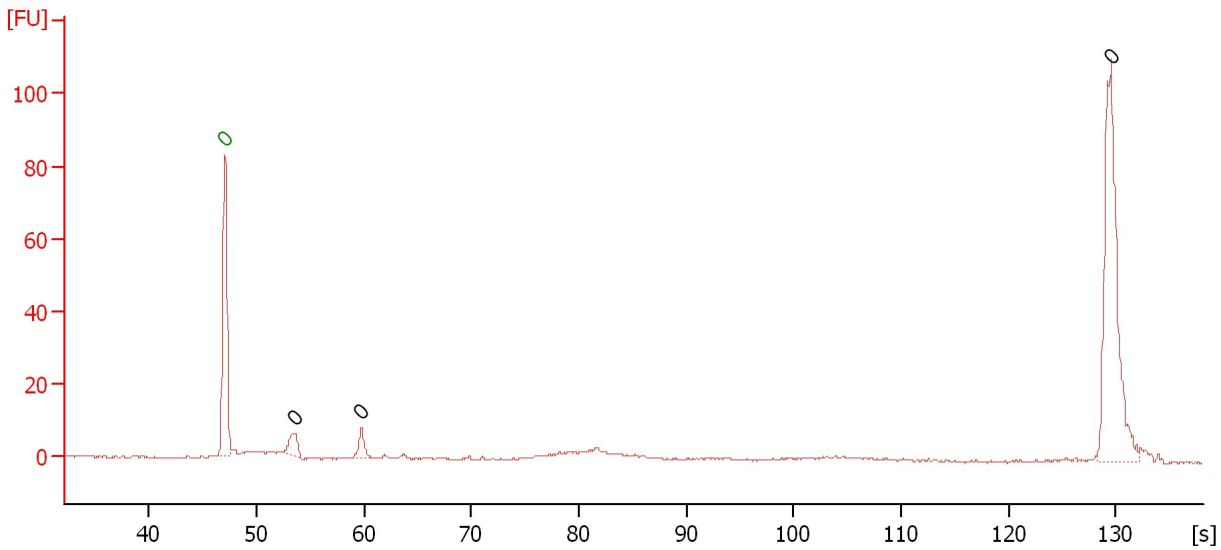
Peak	Size [bp]	Conc. [pg/μl]	Molarity [pmol/l]	Observations
1	0	0.00	0.0	Lower Marker
2	0	0.00	0.0	
3	0	0.00	0.0	

Assay Class: High Sensitivity DNA Assay  
Data Path: C:\...ents and Settings\Bioanalyzer\2013-09-06\2013-09-06\_003.xad

Created: 9/6/2013 11:04:13 AM  
Modified: 9/6/2013 11:45:00 AM

**Electropherogram Summary Continued ...**

library no. 68



**Overall Results for sample 2 : library no. 68**

Number of peaks found: 3                      Noise: 0.2

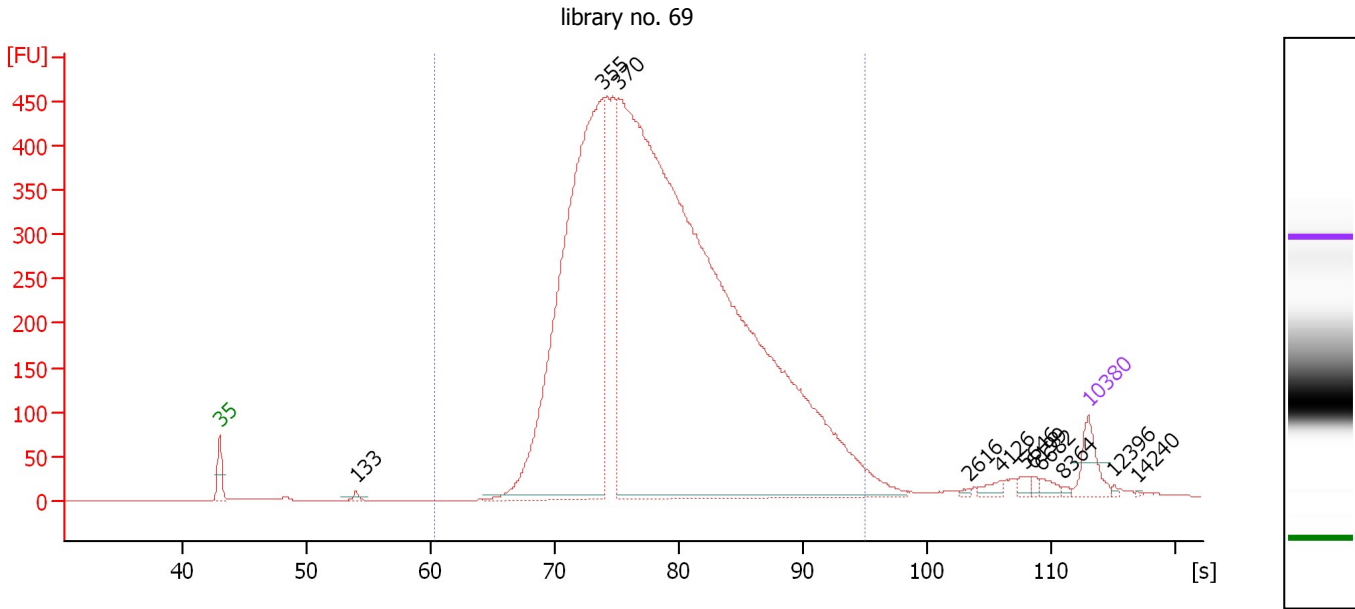
**Peak table for sample 2 : library no. 68**

Peak	Size [bp]	Conc. [pg/μl]	Molarity [pmol/l]	Observations
1	0	0.00	0.0	Lower Marker
2	0	0.00	0.0	
3	0	0.00	0.0	
4	0	0.00	0.0	

Assay Class: High Sensitivity DNA Assay  
 Data Path: C:\...ents and Settings\Bioanalyzer\2013-09-06\2013-09-06\_003.xad

Created: 9/6/2013 11:04:13 AM  
 Modified: 9/6/2013 11:45:00 AM

**Electropherogram Summary Continued ...**



**Overall Results for sample 3 : library no. 69**

Number of peaks found: 11      Corr. Area 1: 8,887.5  
 Noise: 0.3

**Peak table for sample 3 : library no. 69**

Peak	Size [bp]	Conc. [pg/μl]	Molarity [pmol/l]	Observations
1	35	125.00	5,411.3	Lower Marker
2	133	15.50	177.1	
3	355	2,526.48	10,786.1	
4	370	6,232.05	25,522.5	
5	2,616	5.38	3.1	
6	4,126	19.55	7.2	
7	5,646	16.38	4.4	
8	6,199	10.27	2.5	
9	6,682	19.34	4.4	
10	8,364	5.43	1.0	
11	10,380	75.00	10.9	Upper Marker
12	12,396	0.00	0.0	
13	14,240	0.00	0.0	

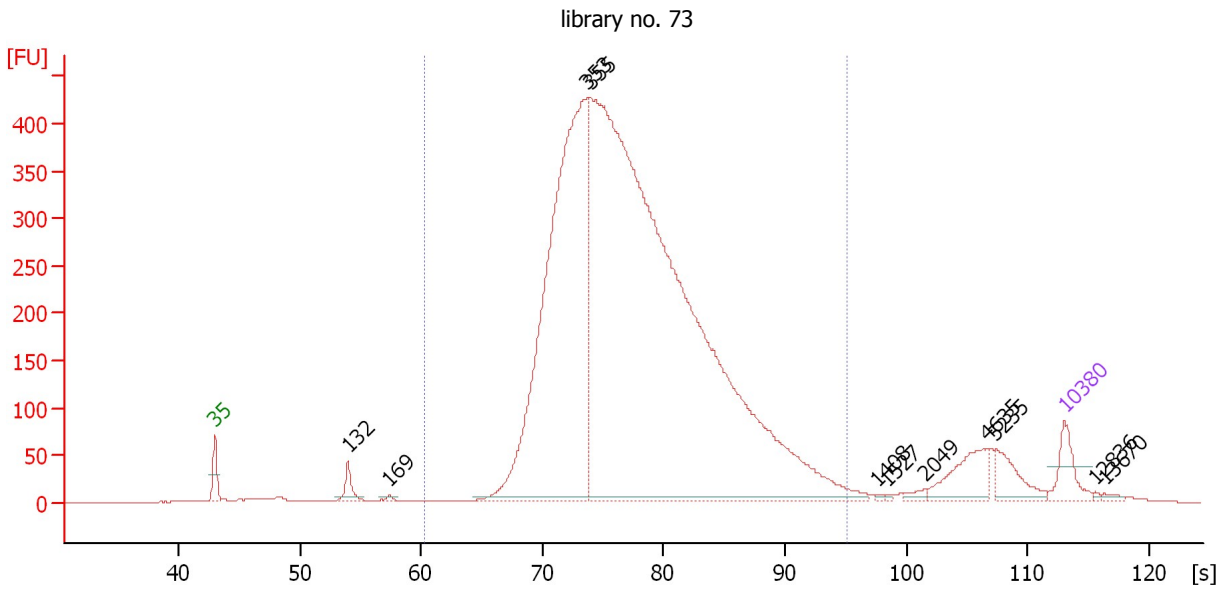
**Region table for sample 3 : library no. 69**

From [s]	To [s]	Average Size [bp]	Molarity [pmol/l]	Conc. [pg/μl]	Corr. Area % of Total	Size distribution in CV [%]	Color
60.30	95.07	439	32,303.3	8,624.18	8,887.5 97	27.7	Blue

Assay Class: High Sensitivity DNA Assay  
 Data Path: C:\...ents and Settings\Bioanalyzer\2013-09-06\2013-09-06\_003.xad

Created: 9/6/2013 11:04:13 AM  
 Modified: 9/6/2013 11:45:00 AM

**Electropherogram Summary Continued ...**



**Overall Results for sample 4 : library no. 73**

Number of peaks found: 11                      Corr. Area 1: 7,444.0  
 Noise: 0.4

**Peak table for sample 4 : library no. 73**

Peak	Size [bp]	Conc. [pg/μl]	Molarity [pmol/l]	Observations
1	35	125.00	5,411.3	Lower Marker
2	132	64.97	743.2	
3	169	9.04	81.1	
4	353	2,316.61	9,953.6	
5	355	5,529.04	23,572.4	
6	1,408	3.90	4.2	
7	1,527	3.38	3.4	
8	2,049	14.23	10.5	
9	4,635	127.25	41.6	
10	5,235	86.51	25.0	
11	10,380	75.00	10.9	Upper Marker
12	12,836	0.00	0.0	
13	13,670	0.00	0.0	

**Region table for sample 4 : library no. 73**

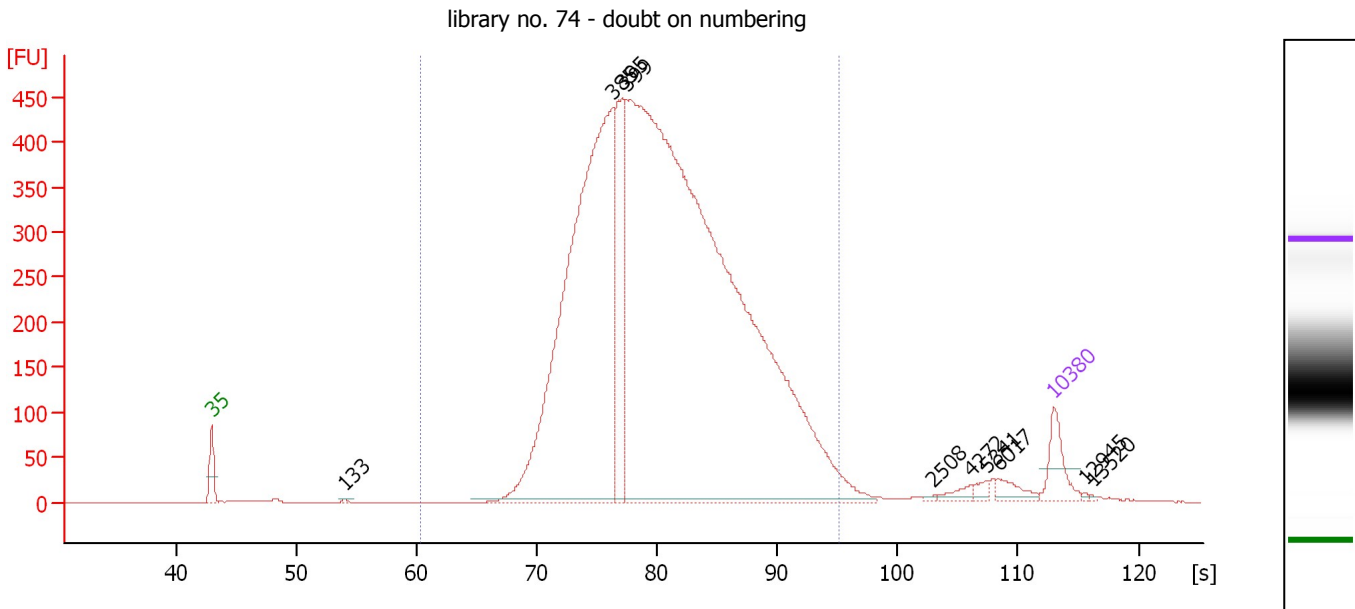
From [s]	To [s]	Average Size [bp]	Molarity [pmol/l]	Conc. [pg/μl]	Corr. Area % of Total	Size distribution in CV [%]	Color
60.30	95.07	417	28,753.9	7,397.23	7,444.0 92	25.3	Blue



Assay Class: High Sensitivity DNA Assay  
 Data Path: C:\...ents and Settings\Bioanalyzer\2013-09-06\2013-09-06\_003.xad

Created: 9/6/2013 11:04:13 AM  
 Modified: 9/6/2013 11:45:00 AM

**Electropherogram Summary Continued ...**



**Overall Results for sample 5 : library no. 74 - doubt on numbering**

Number of peaks found: 10                      Corr. Area 1: 8,733.9  
 Noise: 0.2

**Peak table for sample 5 : library no. 74 - doubt on numbering**

Peak	Size [bp]	Conc. [pg/µl]	Molarity [pmol/l]	Observations
1	35	125.00	5,411.3	Lower Marker
2	133	6.08	69.3	
3	385	2,171.89	8,542.7	
4	395	434.06	1,664.1	
5	399	4,859.29	18,448.6	
6	2,508	4.07	2.5	
7	4,272	21.36	7.6	
8	5,341	16.70	4.7	
9	6,017	36.24	9.1	
10	10,380	75.00	10.9	Upper Marker
11	12,945	0.00	0.0	
12	13,520	0.00	0.0	

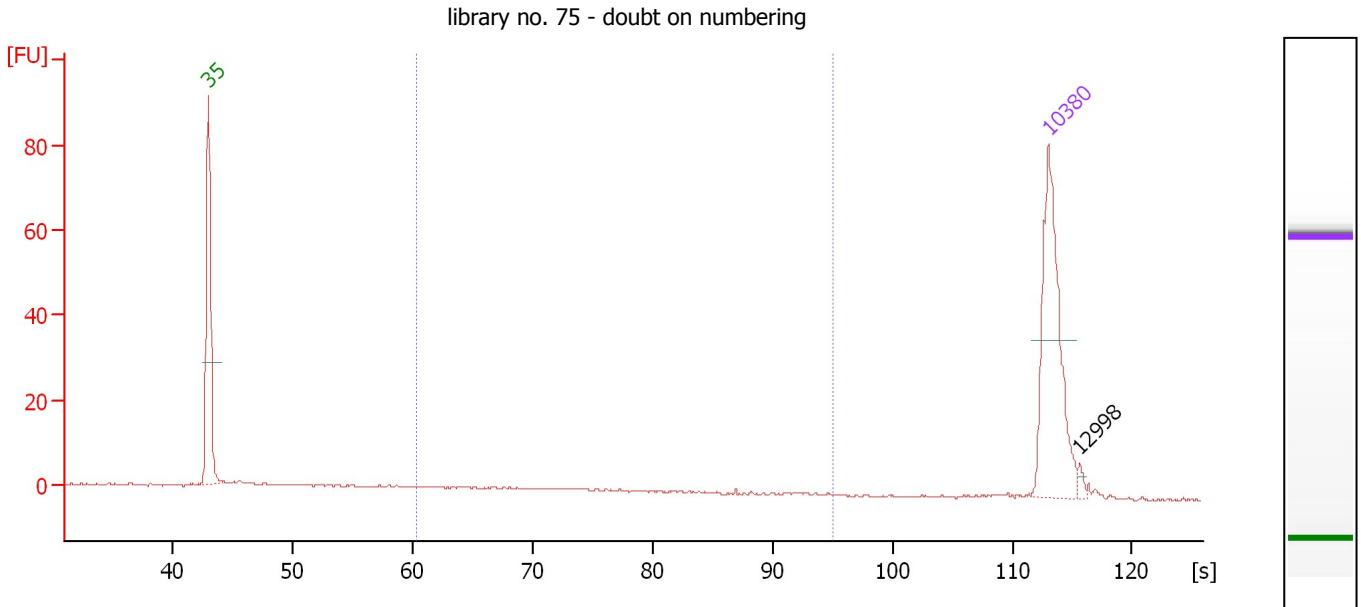
**Region table for sample 5 : library no. 74 - doubt on numbering**

From [s]	To [s]	Average Size [bp]	Molarity [pmol/l]	Conc. [pg/µl]	Corr. Area % of Total	Size distribution in CV [%]	Color
60.30	95.07	468	24,802.5	7,108.72	8,733.9 97	25.8	Blue

Assay Class: High Sensitivity DNA Assay  
 Data Path: C:\...ents and Settings\Bioanalyzer\2013-09-06\2013-09-06\_003.xad

Created: 9/6/2013 11:04:13 AM  
 Modified: 9/6/2013 11:45:00 AM

**Electropherogram Summary Continued ...**



**Overall Results for sample 6 : library no. 75 - doubt on numbering**

Number of peaks found: 1                      Corr. Area 1: 22.6  
 Noise: 0.2

**Peak table for sample 6 : library no. 75 - doubt on numbering**

Peak	Size [bp]	Conc. [pg/μl]	Molarity [pmol/l]	Observations
1	35	125.00	5,411.3	Lower Marker
2	10,380	75.00	10.9	Upper Marker
3	12,998	0.00	0.0	

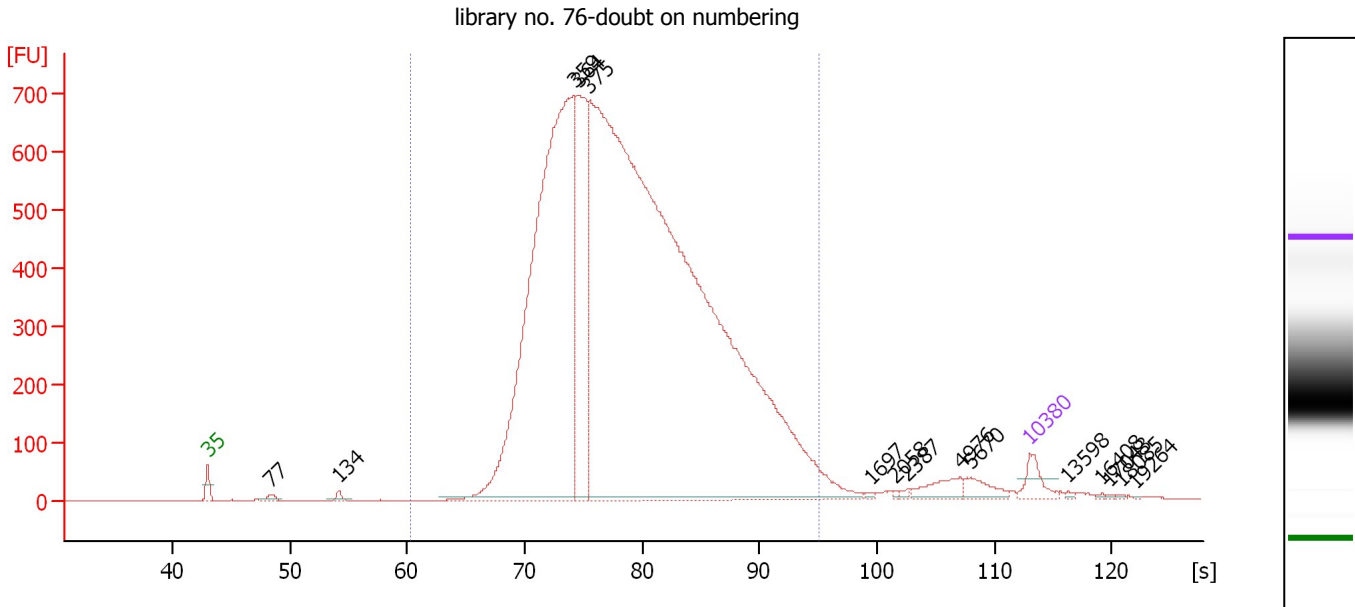
**Region table for sample 6 : library no. 75 - doubt on numbering**

From [s]	To [s]	Average Size [bp]	Molarity [pmol/l]	Conc. [pg/μl]	Corr. Area % of Total	Size distribution in CV [%]	Color	
60.30	95.07	381	103.2	21.29	22.6	32	44.5	Blue

Assay Class: High Sensitivity DNA Assay  
 Data Path: C:\...ents and Settings\Bioanalyzer\2013-09-06\2013-09-06\_003.xad

Created: 9/6/2013 11:04:13 AM  
 Modified: 9/6/2013 11:45:00 AM

**Electropherogram Summary Continued ...**



**Overall Results for sample 7 : library no. 76-doubt on numbering**

Number of peaks found: 15                      Corr. Area 1: 14,083.0  
 Noise: 0.2

**Peak table for sample 7 : library no. 76-doubt on numbering**

Peak	Size [bp]	Conc. [pg/μl]	Molarity [pmol/l]	Observations
1	35	125.00	5,411.3	Lower Marker
2	77	28.47	557.7	
3	134	27.34	308.3	
4	359	3,965.05	16,756.1	
5	364	1,085.06	4,520.9	
6	375	9,715.79	39,252.9	
7	1,697	7.47	6.7	
8	2,058	6.37	4.7	
9	2,387	9.83	6.2	
10	4,976	86.89	26.5	
11	5,670	69.42	18.6	
12	10,380	75.00	10.9	Upper Marker
13	13,598	0.00	0.0	
14	16,408	0.00	0.0	
15	17,043	0.00	0.0	
16	18,085	0.00	0.0	
17	19,264	0.00	0.0	

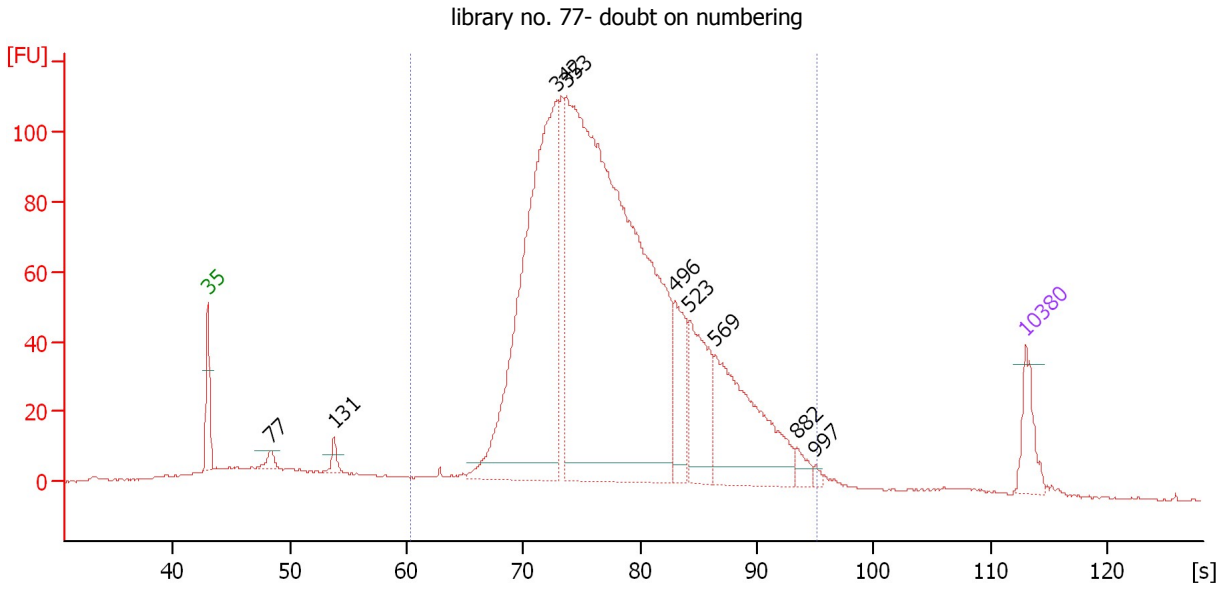
**Region table for sample 7 : library no. 76-doubt on numbering**

From [s]	To [s]	Average Size [bp]	Molarity [pmol/l]	Conc. [pg/μl]	Corr. Area % of Total	Size distribution in CV [%]	Color
60.30	95.07	444	50,911.2	13,733.89	14,083.0 97	27.7	Blue

Assay Class: High Sensitivity DNA Assay  
 Data Path: C:\...ents and Settings\Bioanalyzer\2013-09-06\2013-09-06\_003.xad

Created: 9/6/2013 11:04:13 AM  
 Modified: 9/6/2013 11:45:00 AM

**Electropherogram Summary Continued ...**



**Overall Results for sample 8 : library no. 77- doubt on numbering**

Number of peaks found: 9                      Corr. Area 1: 2,108.2  
 Noise: 0.3

**Peak table for sample 8 : library no. 77- doubt on numbering**

Peak	Size [bp]	Conc. [pg/μl]	Molarity [pmol/l]	Observations
1	35	125.00	5,411.3	Lower Marker
2	77	33.62	660.1	
3	131	34.02	394.6	
4	342	1,398.43	6,190.4	
5	353	2,798.21	12,025.2	
6	496	195.11	595.8	
7	523	259.14	751.4	
8	569	446.50	1,189.2	
9	882	30.91	53.1	
10	997	9.26	14.1	
11	10,380	75.00	10.9	Upper Marker

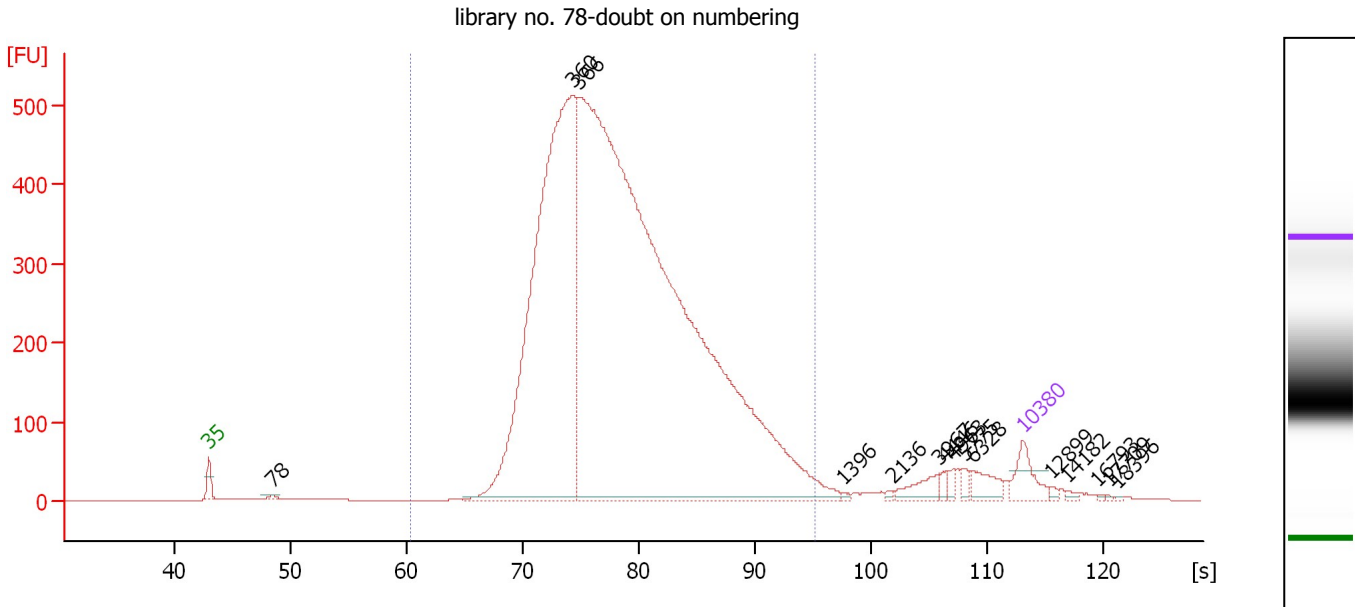
**Region table for sample 8 : library no. 77- doubt on numbering**

From [s]	To [s]	Average Size [bp]	Molarity [pmol/l]	Conc. [pg/μl]	Corr. Area % of Total	Size distribution in CV [%]	Color
60.30	95.07	426	21,321.0	5,483.46	2,108.2 90	28.6	Blue

Assay Class: High Sensitivity DNA Assay  
 Data Path: C:\...ents and Settings\Bioanalyzer\2013-09-06\2013-09-06\_003.xad

Created: 9/6/2013 11:04:13 AM  
 Modified: 9/6/2013 11:45:00 AM

**Electropherogram Summary Continued ...**



**Overall Results for sample 9 : library no. 78-doubt on numbering**

Number of peaks found: 15                      Corr. Area 1: 9,187.3  
 Noise: 0.3

**Peak table for sample 9 : library no. 78-doubt on numbering**

Peak	Size [bp]	Conc. [pg/μl]	Molarity [pmol/l]	Observations
1	35	125.00	5,411.3	Lower Marker
2	78	11.52	224.3	
3	360	2,757.31	11,594.1	
4	366	6,495.78	26,885.2	
5	1,396	5.81	6.3	
6	2,136	6.28	4.5	
7	3,967	55.26	21.1	
8	4,446	14.05	4.8	
9	4,963	15.03	4.6	
10	5,775	21.29	5.6	
11	6,328	58.18	13.9	
12	10,380	75.00	10.9	Upper Marker
13	12,899	0.00	0.0	
14	14,182	0.00	0.0	
15	16,793	0.00	0.0	
16	17,709	0.00	0.0	
17	18,396	0.00	0.0	

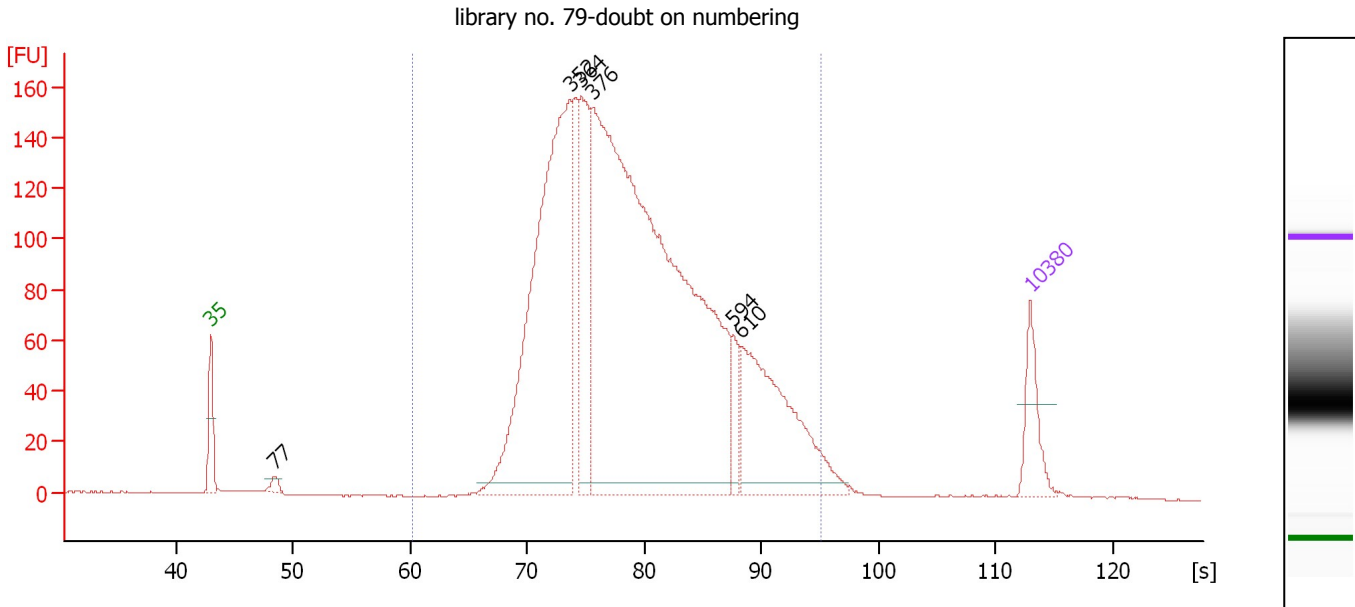
**Region table for sample 9 : library no. 78-doubt on numbering**

From [s]	To [s]	Average Size [bp]	Molarity [pmol/l]	Conc. [pg/μl]	Corr. Area % of Total	Size distribution in CV [%]	Color
60.30	95.07	436	32,387.8	8,646.94	9,187.3 95	26.4	Blue

Assay Class: High Sensitivity DNA Assay  
 Data Path: C:\...ents and Settings\Bioanalyzer\2013-09-06\2013-09-06\_003.xad

Created: 9/6/2013 11:04:13 AM  
 Modified: 9/6/2013 11:45:00 AM

**Electropherogram Summary Continued ...**



**Overall Results for sample 10 : library no. 79-doubt on numbering**

Number of peaks found: 6                      Corr. Area 1: 3,110.4  
 Noise: 0.2

**Peak table for sample 10 : library no. 79-doubt on numbering**

Peak	Size [bp]	Conc. [pg/μl]	Molarity [pmol/l]	Observations
1	35	125.00	5,411.3	Lower Marker
2	77	18.85	368.4	
3	352	1,127.11	4,846.2	
4	364	303.76	1,265.1	
5	376	2,247.49	9,048.2	
6	594	58.09	148.1	
7	610	405.81	1,007.5	
8	10,380	75.00	10.9	Upper Marker

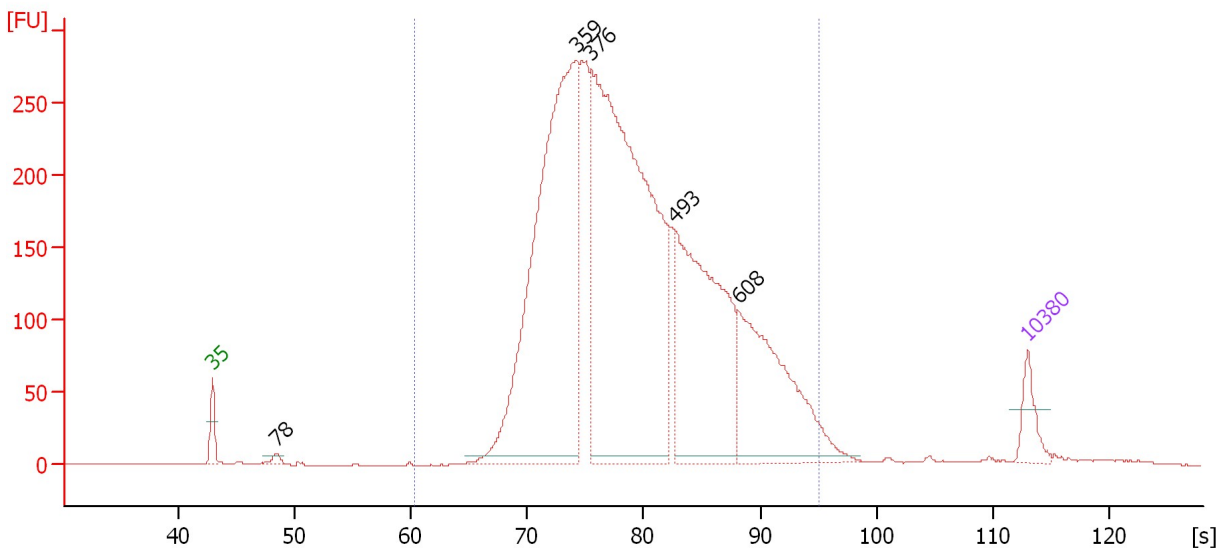
**Region table for sample 10 : library no. 79-doubt on numbering**

From [s]	To [s]	Average Size [bp]	Molarity [pmol/l]	Conc. [pg/μl]	Corr. Area % of Total	Size distribution in CV [%]	Color
60.30	95.07	451	15,187.2	4,115.77	3,110.4 98	29.5	Blue

Assay Class: High Sensitivity DNA Assay  
 Data Path: C:\...ents and Settings\Bioanalyzer\2013-09-06\2013-09-06\_003.xad

Created: 9/6/2013 11:04:13 AM  
 Modified: 9/6/2013 11:45:00 AM

**Electropherogram Summary Continued ...**



**Overall Results for sample 11 :**

Number of peaks found: 5                      Corr. Area 1: 5,423.2  
 Noise: 0.2

**Peak table for sample 11 :**

Peak	Size [bp]	Conc. [pg/μl]	Molarity [pmol/l]	Observations
1	35	125.00	5,411.3	Lower Marker
2	78	20.33	394.0	
3	359	2,108.56	8,899.4	
4	376	2,541.27	10,250.7	
5	493	1,066.53	3,279.2	
6	608	676.17	1,686.3	
7	10,380	75.00	10.9	Upper Marker

**Region table for sample 11 :**

From [s]	To [s]	Average Size [bp]	Molarity [pmol/l]	Conc. [pg/μl]	Corr. Area % of Total	Size distribution in CV [%]	Color	
60.30	95.07	451	25,203.7	6,833.21	5,423.2	98	29.3	Blue