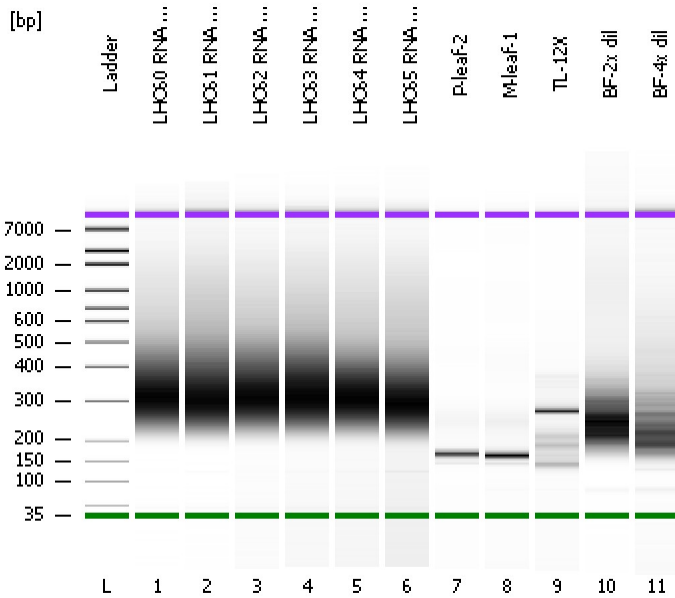


Assay Class: High Sensitivity DNA Assay
Data Path: C:\...ents and Settings\Bioanalyzer\2013-09-06\2013-09-06_006.xad

Created: 9/6/2013 4:39:26 PM
Modified: 9/6/2013 5:25:57 PM

Electrophoresis File Run Summary



Instrument Information:

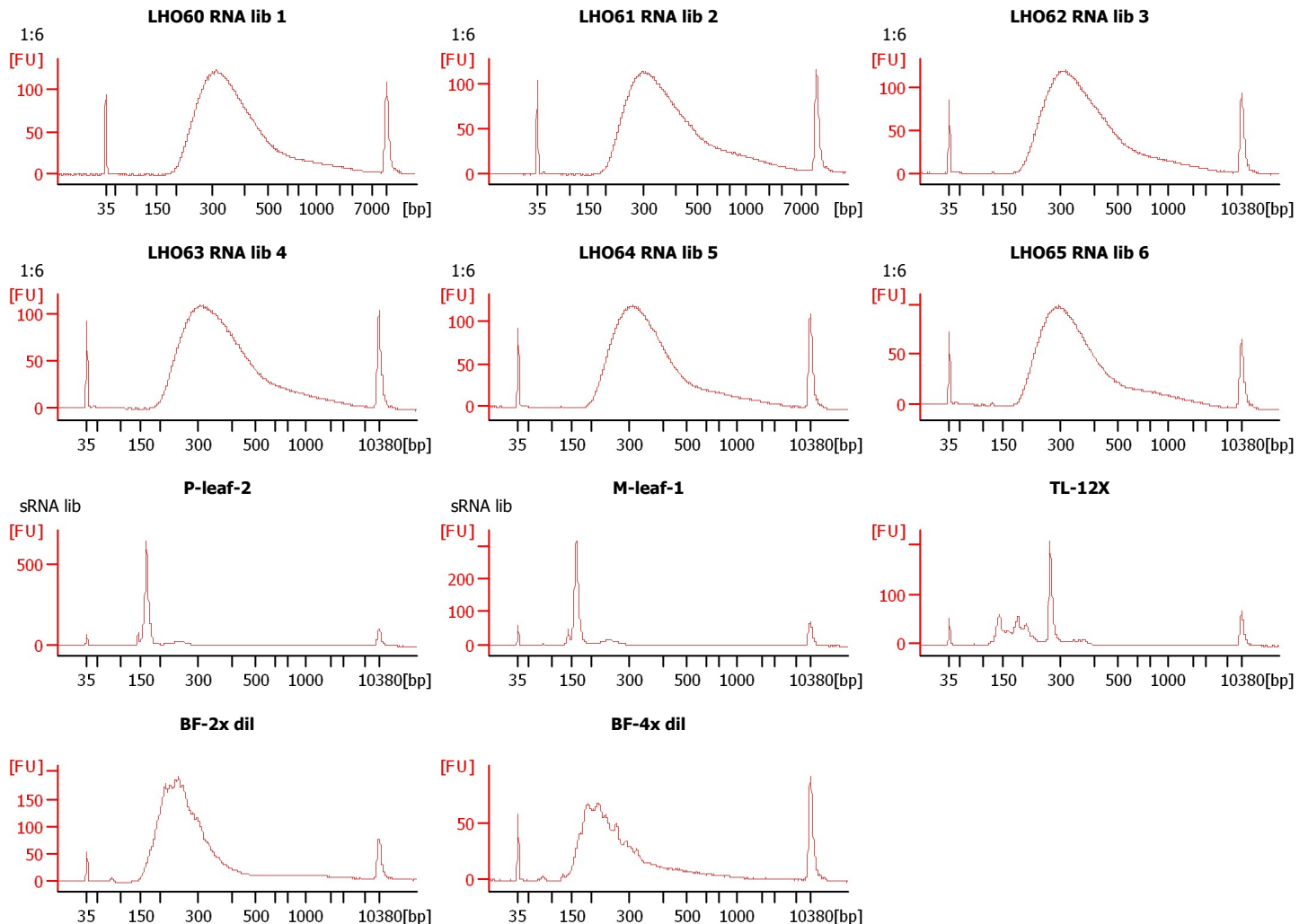
Instrument Name: DE13701086 Firmware: C.01.069
Serial#: DE13701086 Type: G2938B

Assay Information:

Assay Origin Path: C:\Program Files\Agilent\2100 bioanalyzer\2100 expert\assays\dsDNA\High Sensitivity DNA.xsy
Assay Class: High Sensitivity DNA Assay
Version: 1.03
Assay Comments: Copyright © 2003-2010 Agilent Technologies

Chip Information:

Chip Lot #:
Reagent Kit Lot #:
Chip Comments:



Assay Class: High Sensitivity DNA Assay
 Data Path: C:\...ents and Settings\Bioanalyzer\2013-09-06\2013-09-06_006.xad

Created: 9/6/2013 4:39:26 PM
 Modified: 9/6/2013 5:25:57 PM

Electrophoresis File Run Summary (Chip Summary)

Sample Name	Sample Comment	Rest. Digest	Status	Observation	Result Label	Result Color
LHO60 RNA lib 1	1:6	<input type="checkbox"/>	✓			
LHO61 RNA lib 2	1:6	<input type="checkbox"/>	✓			
LHO62 RNA lib 3	1:6	<input type="checkbox"/>	✓			
LHO63 RNA lib 4	1:6	<input type="checkbox"/>	✓			
LHO64 RNA lib 5	1:6	<input type="checkbox"/>	✓			
LHO65 RNA lib 6	1:6	<input type="checkbox"/>	✓			
P-leaf-2	sRNA lib	<input type="checkbox"/>	✓			
M-leaf-1	sRNA lib	<input type="checkbox"/>	✓			
TL-12X		<input type="checkbox"/>	✓			
BF-2x dil		<input type="checkbox"/>	✓			
BF-4x dil		<input type="checkbox"/>	✓			
Ladder		<input type="checkbox"/>	✓			

Chip Lot #

Reagent Kit Lot #

Chip Comments :

Assay Class: High Sensitivity DNA Assay
 Data Path: C:\...ents and Settings\Bioanalyzer\2013-09-06\2013-09-06_006.xad

Created: 9/6/2013 4:39:26 PM
 Modified: 9/6/2013 5:25:57 PM

Electrophoresis Assay Details

General Analysis Settings

Number of Available Sample and Ladder Wells (Max.) : 12
 Minimum Visible Range [s] : 32
 Maximum Visible Range [s] : 138
 Start Analysis Time Range [s] : 33
 End Analysis Time Range [s] : 137.5
 Ladder Concentration [pg/μl] : 1950
 Uses Standard Area for Ladder Fragments
 Lower Marker Concentration [pg/μl] : 125
 Upper Marker Concentration [pg/μl] : 75
 Used Upper Marker for Quantitation
 Standard Curve Fit is Point to Point
 Show Data Aligned to Lower and Upper Marker

Integrator Settings

Integration Start Time [s] : 33.05
 Integration End Time [s] : 137
 Slope Threshold : 0.8
 Height Threshold [FU] : 5
 Area Threshold : 0.1
 Width Threshold [s] : 0.6
 Baseline Plateau [s] : 0.5

Filter Settings

Filter Width [s] : 0.5
 Polynomial Order : 4

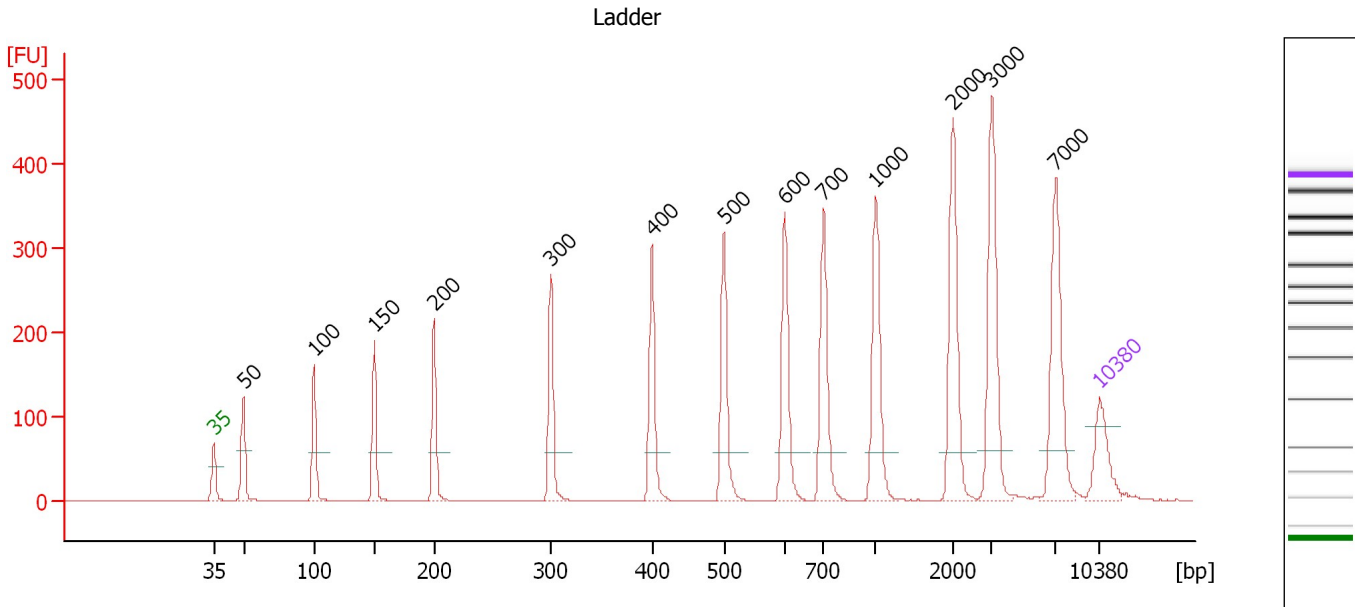
Ladder

Ladder Peak	Size	Area
1	35	160
2	50	210
3	100	208
4	150	221
5	200	242
6	300	270
7	400	305
8	500	306
9	600	336
10	700	321
11	1000	366
12	2000	413
13	3000	411
14	7000	400
15	10380	214

Assay Class: High Sensitivity DNA Assay
 Data Path: C:\...ents and Settings\Bioanalyzer\2013-09-06\2013-09-06_006.xad

Created: 9/6/2013 4:39:26 PM
 Modified: 9/6/2013 5:25:57 PM

Electropherogram Summary



Overall Results for Ladder

Noise: 0.1

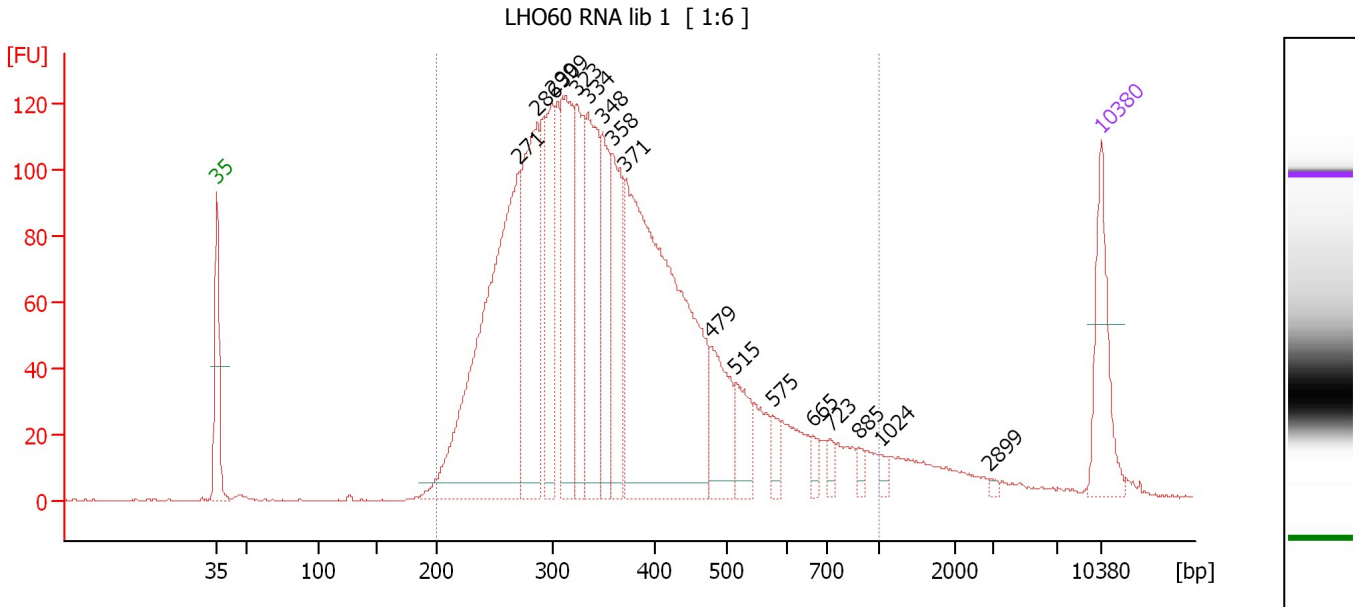
Peak table for Ladder

Peak	Size [bp]	Conc. [pg/μl]	Molarity [pmol/l]	Observations
1	35	125.00	5,411.3	Lower Marker
2	50	150.00	4,545.5	Ladder Peak
3	100	150.00	2,272.7	Ladder Peak
4	150	150.00	1,515.2	Ladder Peak
5	200	150.00	1,136.4	Ladder Peak
6	300	150.00	757.6	Ladder Peak
7	400	150.00	568.2	Ladder Peak
8	500	150.00	454.5	Ladder Peak
9	600	150.00	378.8	Ladder Peak
10	700	150.00	324.7	Ladder Peak
11	1,000	150.00	227.3	Ladder Peak
12	2,000	150.00	113.6	Ladder Peak
13	3,000	150.00	75.8	Ladder Peak
14	7,000	150.00	32.5	Ladder Peak
15	10,380	75.00	10.9	Upper Marker

Assay Class: High Sensitivity DNA Assay
 Data Path: C:\...ents and Settings\Bioanalyzer\2013-09-06\2013-09-06_006.xad

Created: 9/6/2013 4:39:26 PM
 Modified: 9/6/2013 5:25:57 PM

Electropherogram Summary Continued ...



Overall Results for sample 1 : LHO60 RNA lib 1

Number of peaks found: 17 Corr. Area 1: 2,926.6
 Noise: 0.2

Peak table for sample 1 : LHO60 RNA lib 1

Peak	Size [bp]	Conc. [pg/μl]	Molarity [pmol/l]	Observations
1	35	125.00	5,411.3	Lower Marker
2	271	592.81	3,318.9	
3	286	275.40	1,460.4	
4	299	146.11	741.6	
5	309	217.86	1,068.9	
6	323	159.70	750.2	
7	334	200.18	907.7	
8	348	124.65	542.2	
9	358	144.17	610.5	
10	371	655.97	2,678.9	
11	479	94.47	299.1	
12	515	54.99	161.8	
13	575	19.48	51.4	
14	665	13.25	30.2	
15	723	11.81	24.8	
16	885	9.17	15.7	
17	1,024	8.73	12.9	
18	2,899	2.73	1.4	
19	10,380	75.00	10.9	Upper Marker

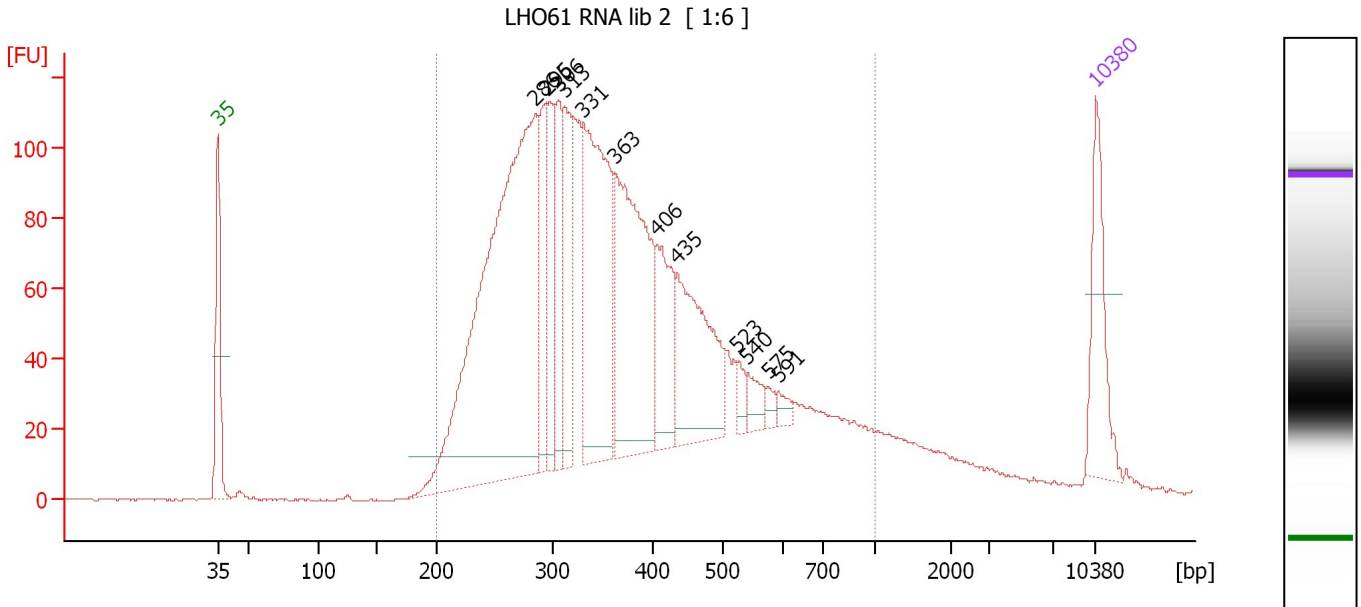
Region table for sample 1 : LHO60 RNA lib 1

From [bp]	To [bp]	Average Size [bp]	Molarity [pmol/l]	Conc. [pg/μl]	Corr. Area	% of Total	Size distribution in CV [%]	Color
200	1,000	374	13,639.7	2,988.27	2,926.6	96	34.2	Blue

Assay Class: High Sensitivity DNA Assay
 Data Path: C:\...ents and Settings\Bioanalyzer\2013-09-06\2013-09-06_006.xad

Created: 9/6/2013 4:39:26 PM
 Modified: 9/6/2013 5:25:57 PM

Electropherogram Summary Continued ...



Overall Results for sample 2 : LHO61 RNA lib 2

Number of peaks found: 13 Corr. Area 1: 2,935.7
 Noise: 0.2

Peak table for sample 2 : LHO61 RNA lib 2

Peak	Size [bp]	Conc. [pg/μl]	Molarity [pmol/l]	Observations
1	35	125.00	5,411.3	Lower Marker
2	286	830.45	4,406.0	
3	295	92.77	476.8	
4	296	100.29	513.0	
5	306	97.24	481.1	
6	313	126.88	615.0	
7	331	326.85	1,497.7	
8	363	315.58	1,319.0	
9	406	109.61	408.8	
10	435	181.28	630.8	
11	523	16.56	48.0	
12	540	24.22	68.0	
13	575	9.73	25.6	
14	591	10.29	26.4	
15	10,380	75.00	10.9	Upper Marker

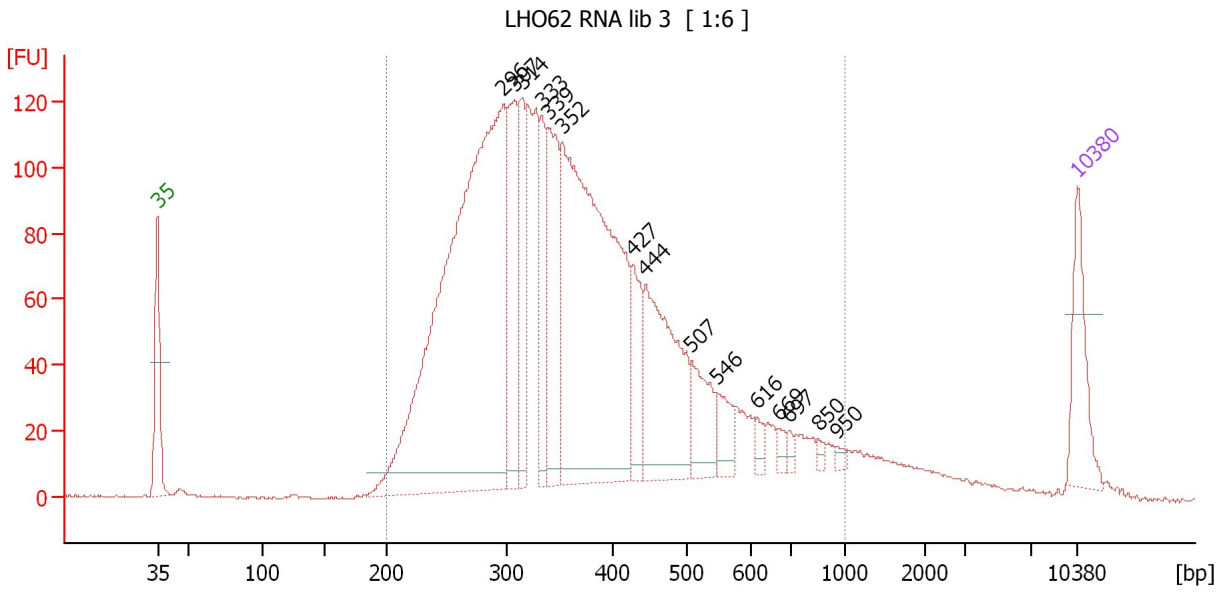
Region table for sample 2 : LHO61 RNA lib 2

From [bp]	To [bp]	Average Size [bp]	Molarity [pmol/l]	Conc. [pg/μl]	Corr. Area	% of Total	Size distribution in CV [%]	Color
200	1,000	384	13,444.5	2,957.01	2,935.7	95	36.9	Blue

Assay Class: High Sensitivity DNA Assay
 Data Path: C:\...ents and Settings\Bioanalyzer\2013-09-06\2013-09-06_006.xad

Created: 9/6/2013 4:39:26 PM
 Modified: 9/6/2013 5:25:57 PM

Electropherogram Summary Continued ...



Overall Results for sample 3 : LHO62 RNA lib 3

Number of peaks found: 15 Corr. Area 1: 2,996.4
 Noise: 0.4

Peak table for sample 3 : LHO62 RNA lib 3

Peak	Size [bp]	Conc. [pg/μl]	Molarity [pmol/l]	Observations
1	35	125.00	5,411.3	Lower Marker
2	296	1,172.98	6,000.5	
3	307	188.67	931.4	
4	314	120.98	583.9	
5	333	109.12	496.8	
6	339	175.06	783.1	
7	352	760.54	3,271.9	
8	427	91.17	323.7	
9	444	242.97	828.7	
10	507	79.22	236.9	
11	546	42.00	116.5	
12	616	15.90	39.1	
13	669	11.56	26.2	
14	697	8.21	17.9	
15	850	6.83	12.2	
16	950	5.63	9.0	
17	10,380	75.00	10.9	Upper Marker

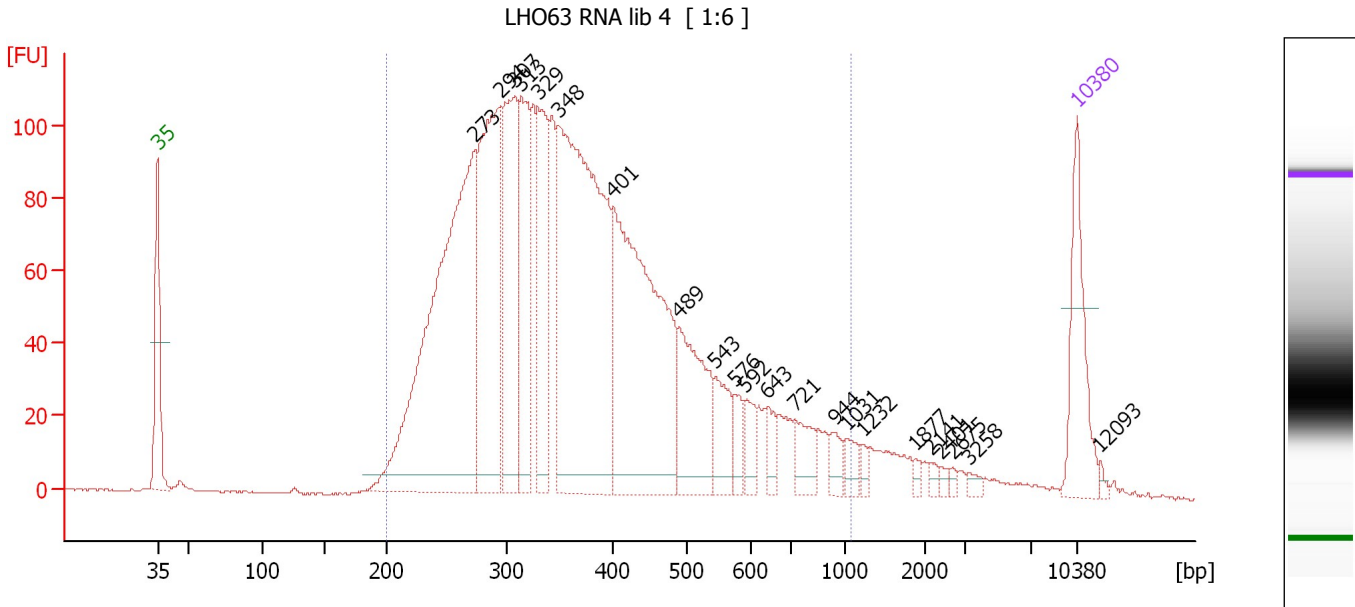
Region table for sample 3 : LHO62 RNA lib 3

From [bp]	To [bp]	Average Size [bp]	Molarity [pmol/l]	Conc. [pg/μl]	Corr. Area	% of Total	Size distribution in CV [%]	Color
200	1,000	380	16,315.7	3,602.77	2,996.4	95	34.9	Blue

Assay Class: High Sensitivity DNA Assay
 Data Path: C:\...ents and Settings\Bioanalyzer\2013-09-06\2013-09-06_006.xad

Created: 9/6/2013 4:39:26 PM
 Modified: 9/6/2013 5:25:57 PM

Electropherogram Summary Continued ...



Overall Results for sample 4 : LHO63 RNA lib 4

Number of peaks found: 22 Corr. Area 1: 2,851.1
 Noise: 0.3

Peak table for sample 4 : LHO63 RNA lib 4

Peak	Size [bp]	Conc. [pg/μl]	Molarity [pmol/l]	Observations
1	35	125.00	5,411.3	Lower Marker
2	273	635.55	3,524.2	
3	294	325.59	1,677.3	
4	307	218.29	1,075.8	
5	313	153.68	744.1	
6	329	143.69	661.1	
7	348	570.59	2,481.2	
8	401	408.67	1,543.0	
9	489	133.12	412.5	
10	543	50.18	139.9	
11	576	23.47	61.7	
12	592	25.09	64.2	
13	643	20.45	48.2	
14	721	33.83	71.1	
15	944	16.13	25.9	
16	1,031	15.82	23.2	
17	1,232	6.84	8.4	
18	1,877	4.69	3.8	
19	2,141	5.26	3.7	
20	2,401	4.13	2.6	
21	2,675	3.15	1.8	
22	3,258	5.21	2.4	
23	10,380	75.00	10.9	Upper Marker
24	12,093	0.00	0.0	

Assay Class: High Sensitivity DNA Assay
Data Path: C:\...ents and Settings\Bioanalyzer\2013-09-06\2013-09-06_006.xad

Created: 9/6/2013 4:39:26 PM
Modified: 9/6/2013 5:25:57 PM

Electropherogram Summary Continued ...

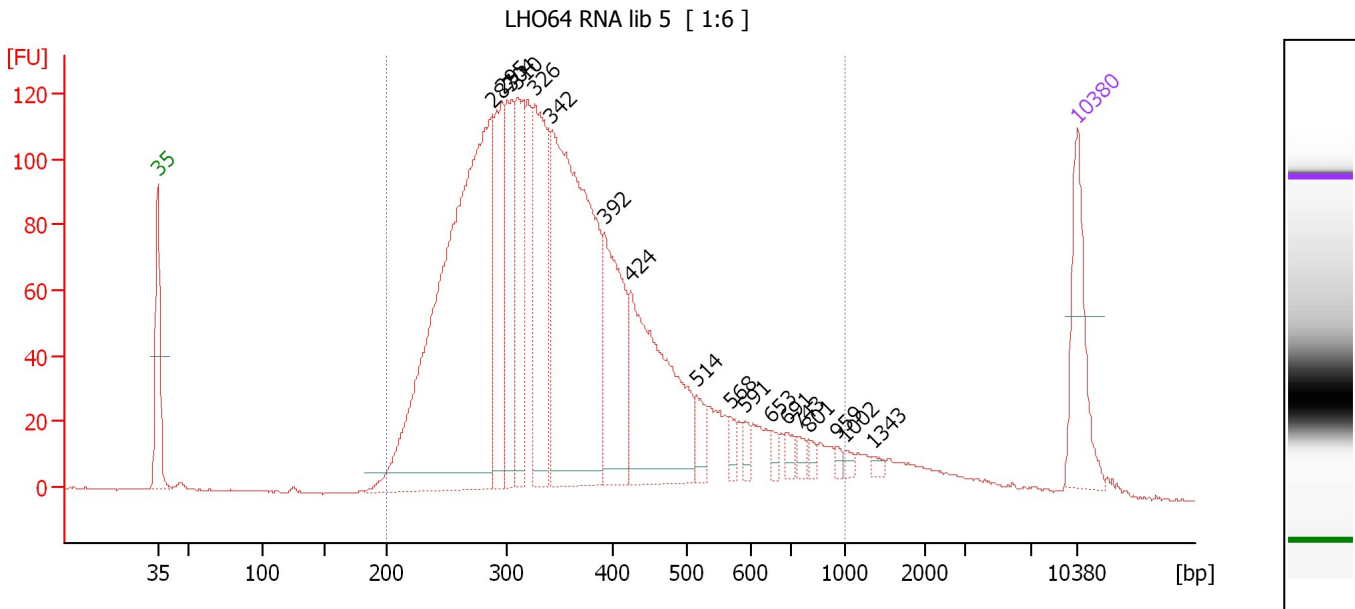
... Region table for sample 4 : LHO63 RNA lib 4

From [bp]	To [bp]	Average Size [bp]	Molarity [pmol/l]	Conc. [pg/μl]	Corr. Area	% of Total	Size distribution in CV [%]	Color
200	1,071	386	13,672.9	3,039.37	2,851.1	95	36.7	■

Assay Class: High Sensitivity DNA Assay
 Data Path: C:\...ents and Settings\Bioanalyzer\2013-09-06\2013-09-06_006.xad

Created: 9/6/2013 4:39:26 PM
 Modified: 9/6/2013 5:25:57 PM

Electropherogram Summary Continued ...



Overall Results for sample 5 : LHO64 RNA lib 5

Number of peaks found: 18 Corr. Area 1: 2,831.5
 Noise: 0.2

Peak table for sample 5 : LHO64 RNA lib 5

Peak	Size [bp]	Conc. [pg/μl]	Molarity [pmol/l]	Observations
1	35	125.00	5,411.3	Lower Marker
2	287	801.16	4,227.7	
3	295	151.50	777.3	
4	304	135.10	673.4	
5	310	141.42	692.3	
6	326	202.35	940.1	
7	342	508.48	2,255.1	
8	392	167.49	647.4	
9	424	243.29	869.7	
10	514	26.61	78.4	
11	568	13.78	36.8	
12	591	10.78	27.7	
13	653	8.90	20.7	
14	691	11.20	24.6	
15	743	10.03	20.4	
16	801	6.96	13.2	
17	959	4.32	6.8	
18	1,002	5.13	7.8	
19	1,343	5.10	5.8	
20	10,380	75.00	10.9	Upper Marker

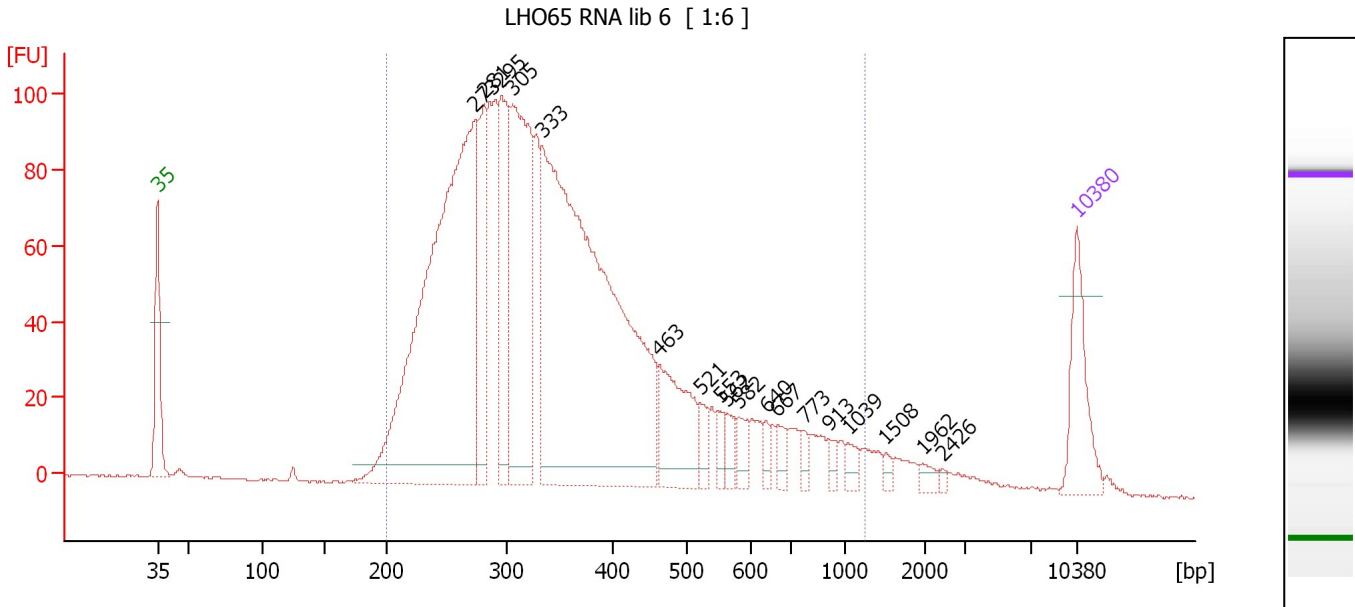
Region table for sample 5 : LHO64 RNA lib 5

From [bp]	To [bp]	Average Size [bp]	Molarity [pmol/l]	Conc. [pg/μl]	Corr. Area	% of Total	Size distribution in CV [%]	Color
200	994	373	12,850.2	2,795.74	2,831.5	95	35.2	Blue

Assay Class: High Sensitivity DNA Assay
 Data Path: C:\...ents and Settings\Bioanalyzer\2013-09-06\2013-09-06_006.xad

Created: 9/6/2013 4:39:26 PM
 Modified: 9/6/2013 5:25:57 PM

Electropherogram Summary Continued ...



Overall Results for sample 6 : LHO65 RNA lib 6

Number of peaks found: 18 Corr. Area 1: 2,396.8
 Noise: 0.3

Peak table for sample 6 : LHO65 RNA lib 6

Peak	Size [bp]	Conc. [pg/μl]	Molarity [pmol/l]	Observations
1	35	125.00	5,411.3	Lower Marker
2	273	951.34	5,280.6	
3	281	148.88	803.5	
4	295	187.76	965.0	
5	305	378.60	1,879.6	
6	333	1,046.52	4,759.3	
7	463	134.45	440.4	
8	521	24.01	69.8	
9	553	18.58	51.0	
10	562	19.94	53.8	
11	582	23.14	60.3	
12	640	13.85	32.8	
13	667	17.33	39.4	
14	773	11.81	23.1	
15	913	10.05	16.7	
16	1,039	14.64	21.4	
17	1,508	7.19	7.2	
18	1,962	9.02	7.0	
19	2,426	3.25	2.0	
20	10,380	75.00	10.9	Upper Marker

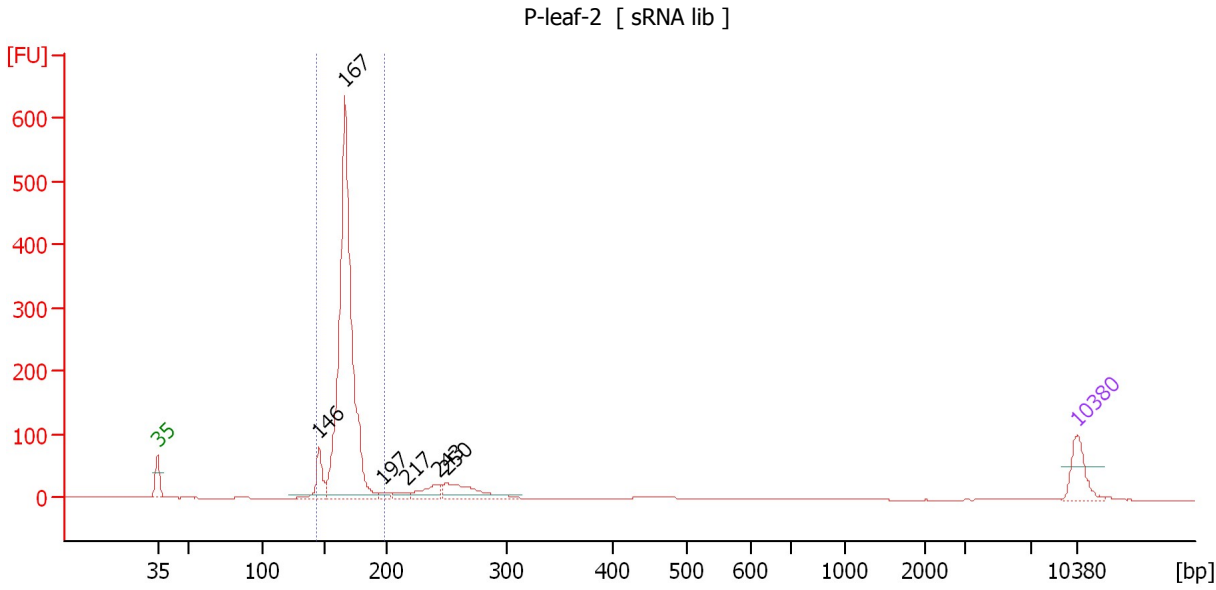
Region table for sample 6 : LHO65 RNA lib 6

From [bp]	To [bp]	Average Size [bp]	Molarity [pmol/l]	Conc. [pg/μl]	Corr. Area	% of Total	Size distribution in CV [%]	Color
200	1,236	373	15,874.1	3,362.74	2,396.8	96	41.5	Blue

Assay Class: High Sensitivity DNA Assay
 Data Path: C:\...ents and Settings\Bioanalyzer\2013-09-06\2013-09-06_006.xad

Created: 9/6/2013 4:39:26 PM
 Modified: 9/6/2013 5:25:57 PM

Electropherogram Summary Continued ...



Overall Results for sample 7 : P-leaf-2

Number of peaks found: 6 Corr. Area 1: 1,292.1
 Noise: 0.2

Peak table for sample 7 : P-leaf-2

Peak	Size [bp]	Conc. [pg/μl]	Molarity [pmol/l]	Observations
1	35	125.00	5,411.3	Lower Marker
2	146	106.13	1,101.8	
3	167	1,508.40	13,716.4	
4	197	16.69	128.4	
5	217	23.30	162.7	
6	243	64.95	404.9	
7	250	129.78	786.6	
8	10,380	75.00	10.9	Upper Marker

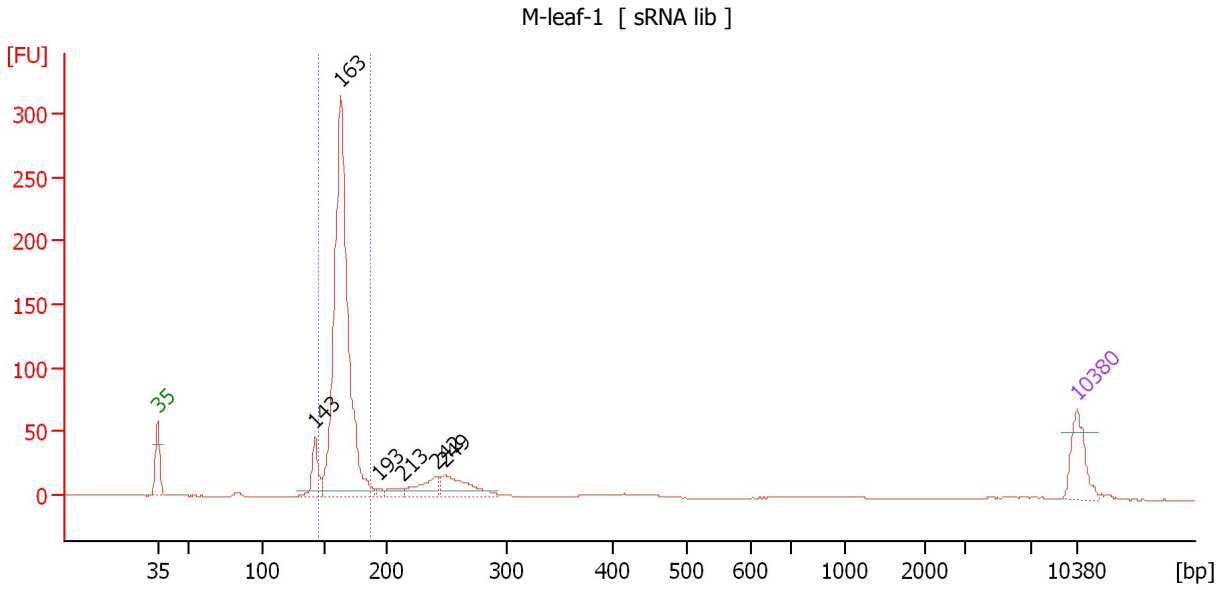
Region table for sample 7 : P-leaf-2

From [bp]	To [bp]	Average Size [bp]	Molarity [pmol/l]	Conc. [pg/μl]	Corr. Area	% of Total	Size distribution in CV [%]	Color
143	198	167	14,570.8	1,602.64	1,292.1	82	4.9	Blue

Assay Class: High Sensitivity DNA Assay
 Data Path: C:\...ents and Settings\Bioanalyzer\2013-09-06\2013-09-06_006.xad

Created: 9/6/2013 4:39:26 PM
 Modified: 9/6/2013 5:25:57 PM

Electropherogram Summary Continued ...



Overall Results for sample 8 : M-leaf-1

Number of peaks found: 6 Corr. Area 1: 687.6
 Noise: 0.1

Peak table for sample 8 : M-leaf-1

Peak	Size [bp]	Conc. [pg/μl]	Molarity [pmol/l]	Observations
1	35	125.00	5,411.3	Lower Marker
2	143	91.09	967.9	
3	163	1,243.19	11,531.2	
4	193	10.66	83.6	
5	213	23.96	170.5	
6	242	68.95	432.6	
7	249	107.76	655.9	
8	10,380	75.00	10.9	Upper Marker

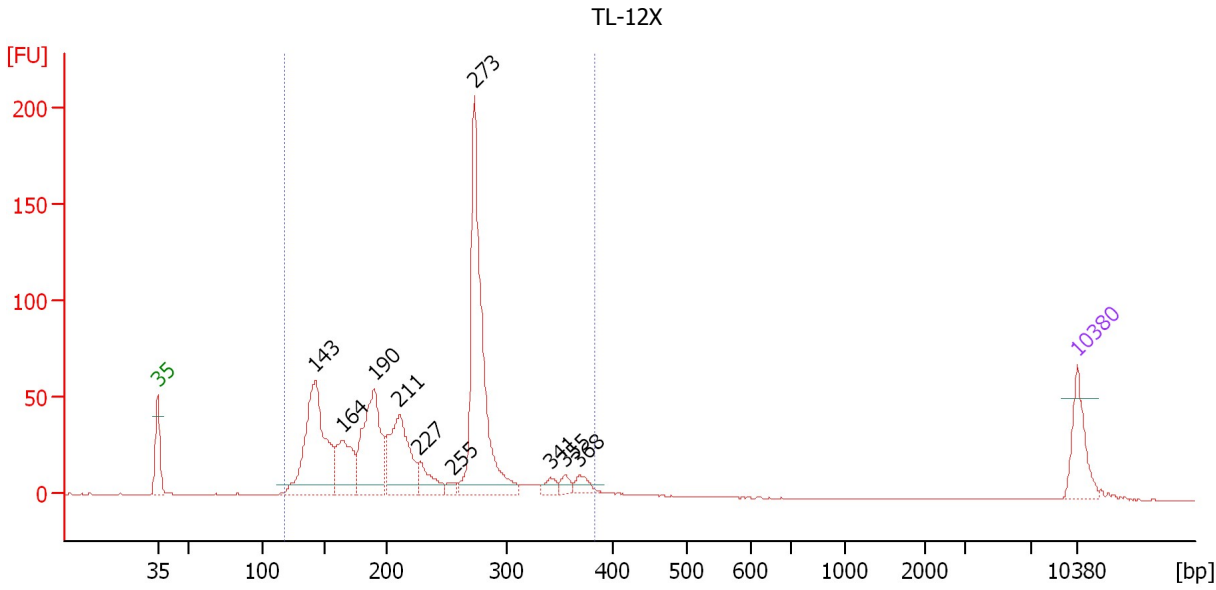
Region table for sample 8 : M-leaf-1

From [bp]	To [bp]	Average Size [bp]	Molarity [pmol/l]	Conc. [pg/μl]	Corr. Area	% of Total	Size distribution in CV [%]	Color
145	188	164	11,573.0	1,253.20	687.6	74	4.2	Blue

Assay Class: High Sensitivity DNA Assay
 Data Path: C:\...ents and Settings\Bioanalyzer\2013-09-06\2013-09-06_006.xad

Created: 9/6/2013 4:39:26 PM
 Modified: 9/6/2013 5:25:57 PM

Electropherogram Summary Continued ...



Overall Results for sample 9 : TL-12X

Number of peaks found: 10 Corr. Area 1: 963.8
 Noise: 0.1

Peak table for sample 9 : TL-12X

Peak	Size [bp]	Conc. [pg/μl]	Molarity [pmol/l]	Observations
1	35	125.00	5,411.3	Lower Marker
2	143	429.33	4,550.5	
3	164	150.70	1,388.7	
4	190	290.72	2,315.0	
5	211	237.95	1,708.6	
6	227	64.98	432.8	
7	255	16.46	97.6	
8	273	562.51	3,123.3	
9	341	20.40	90.7	
10	355	18.73	79.9	
11	368	26.54	109.2	
12	10,380	75.00	10.9	Upper Marker

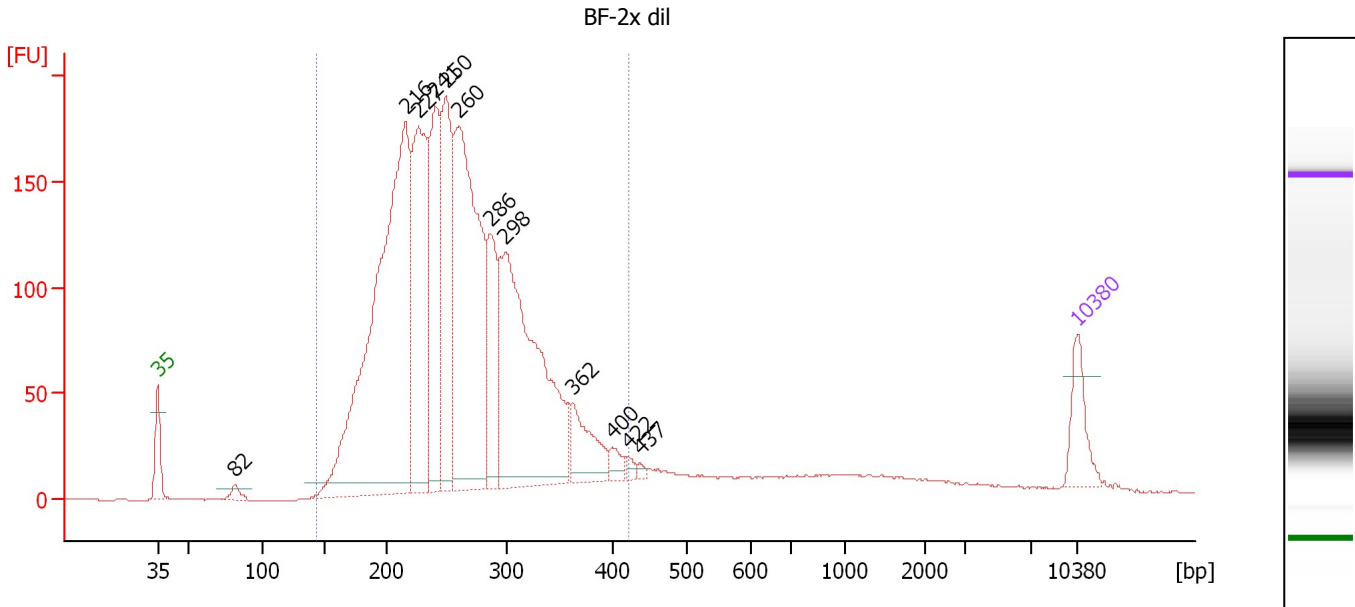
Region table for sample 9 : TL-12X

From [bp]	To [bp]	Average Size [bp]	Molarity [pmol/l]	Conc. [pg/μl]	Corr. Area	% of Total	Size distribution in CV [%]	Color
118	384	228	14,160.6	1,897.62	963.8	98	27.5	Blue

Assay Class: High Sensitivity DNA Assay
 Data Path: C:\...ents and Settings\Bioanalyzer\2013-09-06\2013-09-06_006.xad

Created: 9/6/2013 4:39:26 PM
 Modified: 9/6/2013 5:25:57 PM

Electropherogram Summary Continued ...



Overall Results for sample 10 : BF-2x dil

Number of peaks found: 12 Corr. Area 1: 3,290.5
 Noise: 0.1

Peak table for sample 10 : BF-2x dil

Peak	Size [bp]	Conc. [pg/μl]	Molarity [pmol/l]	Observations
1	35	125.00	5,411.3	Lower Marker
2	82	25.43	471.8	
3	216	1,475.36	10,347.3	
4	227	570.80	3,817.6	
5	241	410.97	2,588.6	
6	250	408.85	2,482.3	
7	260	878.92	5,120.7	
8	286	229.84	1,219.5	
9	298	834.56	4,242.0	
10	362	136.19	570.3	
11	400	28.50	108.0	
12	422	12.63	45.4	
13	437	7.58	26.3	
14	10,380	75.00	10.9	Upper Marker

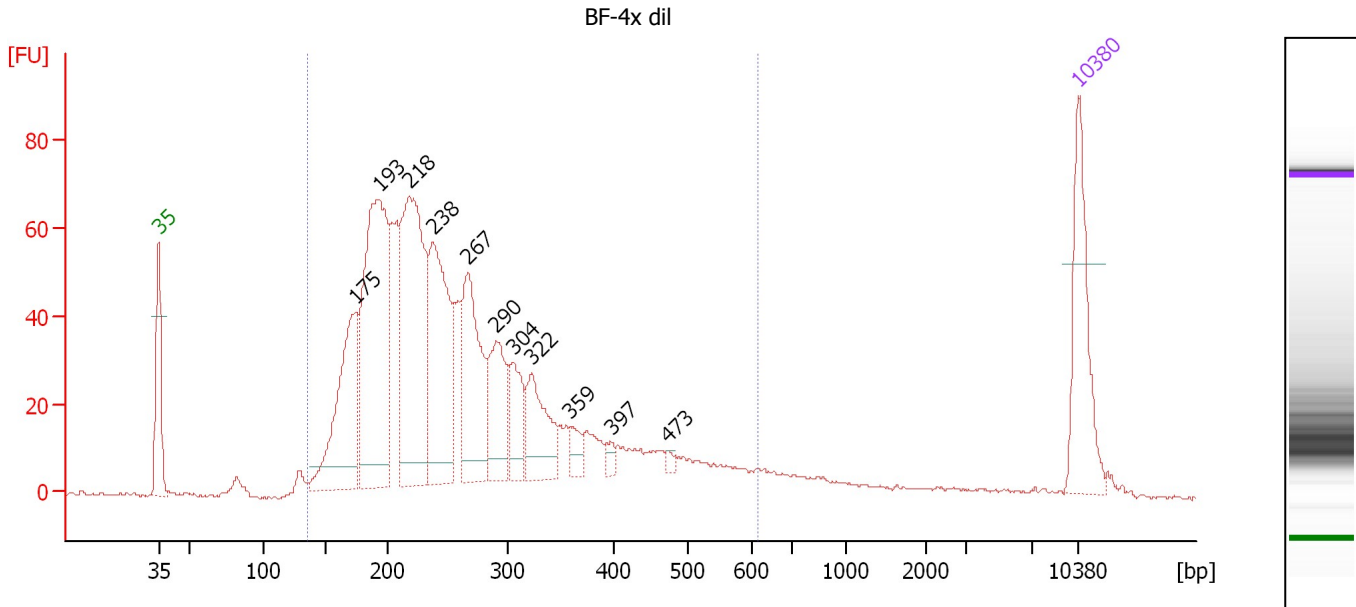
Region table for sample 10 : BF-2x dil

From [bp]	To [bp]	Average Size [bp]	Molarity [pmol/l]	Conc. [pg/μl]	Corr. Area	% of Total	Size distribution in CV [%]	Color
143	420	260	32,213.9	5,242.41	3,290.5	91	20.8	Blue

Assay Class: High Sensitivity DNA Assay
 Data Path: C:\...ents and Settings\Bioanalyzer\2013-09-06\2013-09-06_006.xad

Created: 9/6/2013 4:39:26 PM
 Modified: 9/6/2013 5:25:57 PM

Electropherogram Summary Continued ...



Overall Results for sample 11 : BF-4x dil

Number of peaks found: 11 Corr. Area 1: 1,358.6
 Noise: 0.4

Peak table for sample 11 : BF-4x dil

Peak	Size [bp]	Conc. [pg/μl]	Molarity [pmol/l]	Observations
1	35	125.00	5,411.3	Lower Marker
2	175	171.28	1,486.4	
3	193	306.49	2,401.7	
4	218	279.10	1,940.3	
5	238	181.61	1,157.9	
6	267	138.73	787.5	
7	290	81.73	427.5	
8	304	46.69	232.4	
9	322	71.38	335.4	
10	359	15.57	65.7	
11	397	7.89	30.1	
12	473	4.49	14.4	
13	10,380	75.00	10.9	Upper Marker

Region table for sample 11 : BF-4x dil

From [bp]	To [bp]	Average Size [bp]	Molarity [pmol/l]	Conc. [pg/μl]	Corr. Area	% of Total	Size distribution in CV [%]	Color
136	618	270	11,013.0	1,718.58	1,358.6	94	34.9	Blue