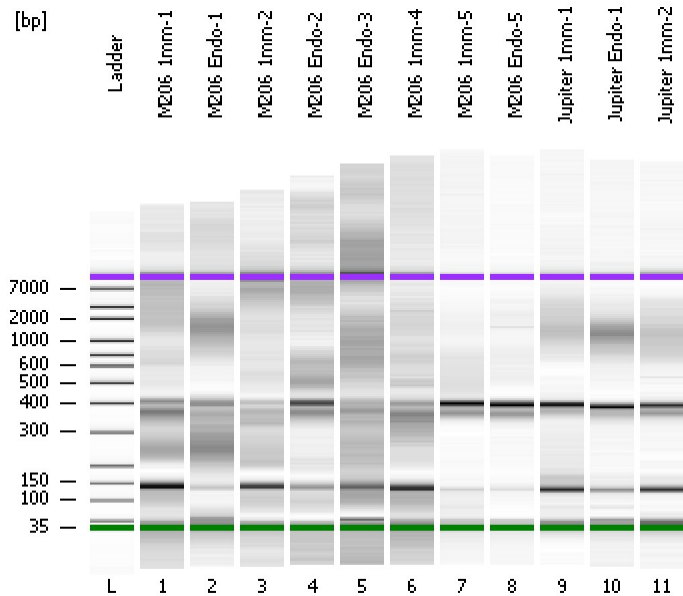


Assay Class: High Sensitivity DNA Assay
Data Path: C:\...ents and Settings\Bioanalyzer\2013-09-12\2013-09-12_002.xad

Created: 9/12/2013 10:35:18 AM
Modified: 9/12/2013 11:25:21 AM

Electrophoresis File Run Summary



Instrument Information:

Instrument Name: DE13701086 Firmware: C.01.069
Serial#: DE13701086 Type: G2938B

Assay Information:

Assay Origin Path: C:\Program Files\Agilent\2100 bioanalyzer\2100 expert\assays\dsDNA\High Sensitivity DNA.xsy
Assay Class: High Sensitivity DNA Assay
Version: 1.03
Assay Comments: Copyright © 2003-2010 Agilent Technologies

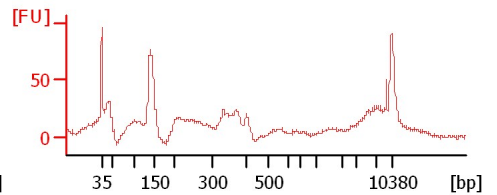
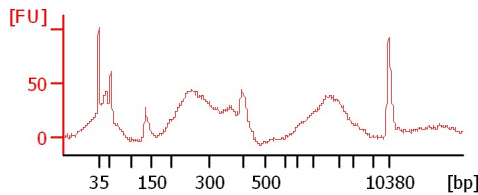
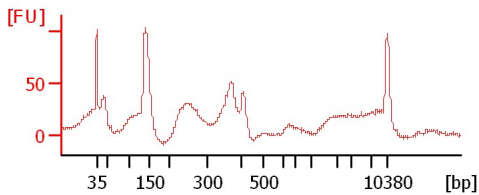
Chip Information:

Chip Lot #:
Reagent Kit Lot #:
Chip Comments:

M206 1mm-1

M206 Endo-1

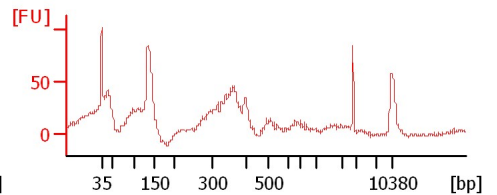
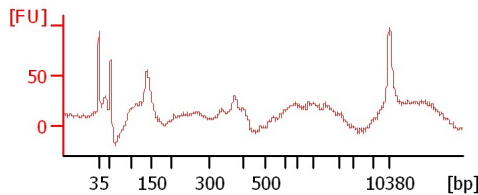
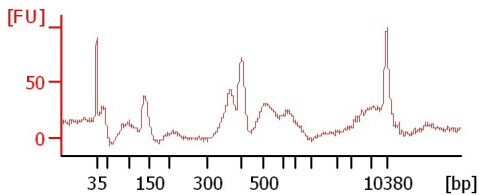
M206 1mm-2



M206 Endo-2

M206 Endo-3

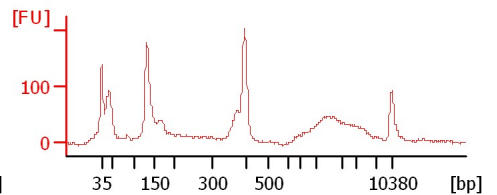
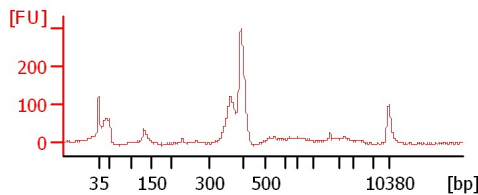
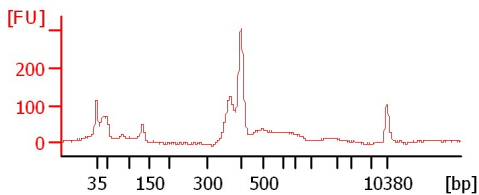
M206 1mm-4



M206 1mm-5

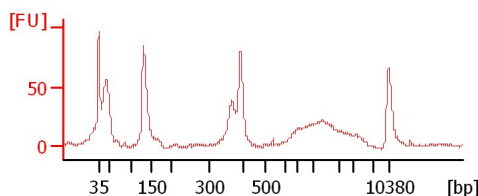
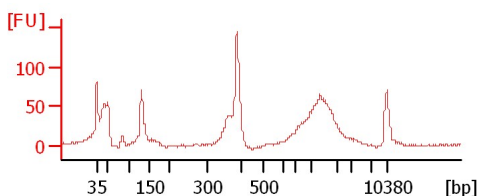
M206 Endo-5

Jupiter 1mm-1



Jupiter Endo-1

Jupiter 1mm-2



Assay Class: High Sensitivity DNA Assay
 Data Path: C:\...ents and Settings\Bioanalyzer\2013-09-12\2013-09-12_002.xad

Created: 9/12/2013 10:35:18 AM
 Modified: 9/12/2013 11:25:21 AM

Electrophoresis File Run Summary (Chip Summary)

Sample Name	Sample Comment	Rest. Digest	Status	Observation	Result Label	Result Color
M206 1mm-1		<input type="checkbox"/>	✓			
M206 Endo-1		<input type="checkbox"/>	✓			
M206 1mm-2		<input type="checkbox"/>	✓			
M206 Endo-2		<input type="checkbox"/>	✓			
M206 Endo-3		<input type="checkbox"/>	✓			
M206 1mm-4		<input type="checkbox"/>	✓			
M206 1mm-5		<input type="checkbox"/>	✓			
M206 Endo-5		<input type="checkbox"/>	✓			
Jupiter 1mm-1		<input type="checkbox"/>	✓			
Jupiter Endo-1		<input type="checkbox"/>	✓			
Jupiter 1mm-2		<input type="checkbox"/>	✓			
Ladder		<input type="checkbox"/>	✓			

Chip Lot #

Reagent Kit Lot #

Chip Comments :

Assay Class: High Sensitivity DNA Assay
Data Path: C:\...ents and Settings\Bioanalyzer\2013-09-12\2013-09-12_002.xad

Created: 9/12/2013 10:35:18 AM
Modified: 9/12/2013 11:25:21 AM

Electrophoresis Assay Details

General Analysis Settings

Number of Available Sample and Ladder Wells (Max.) : 12
Minimum Visible Range [s] : 32
Maximum Visible Range [s] : 138
Start Analysis Time Range [s] : 33
End Analysis Time Range [s] : 137.5
Ladder Concentration [pg/μl] : 1950
Uses Standard Area for Ladder Fragments
Lower Marker Concentration [pg/μl] : 125
Upper Marker Concentration [pg/μl] : 75
Used Upper Marker for Quantitation
Standard Curve Fit is Point to Point
Show Data Aligned to Lower and Upper Marker

Integrator Settings

Integration Start Time [s] : 33.05
Integration End Time [s] : 137
Slope Threshold : 0.8
Height Threshold [FU] : 5
Area Threshold : 0.1
Width Threshold [s] : 0.6
Baseline Plateau [s] : 0.5

Filter Settings

Filter Width [s] : 0.5
Polynomial Order : 4

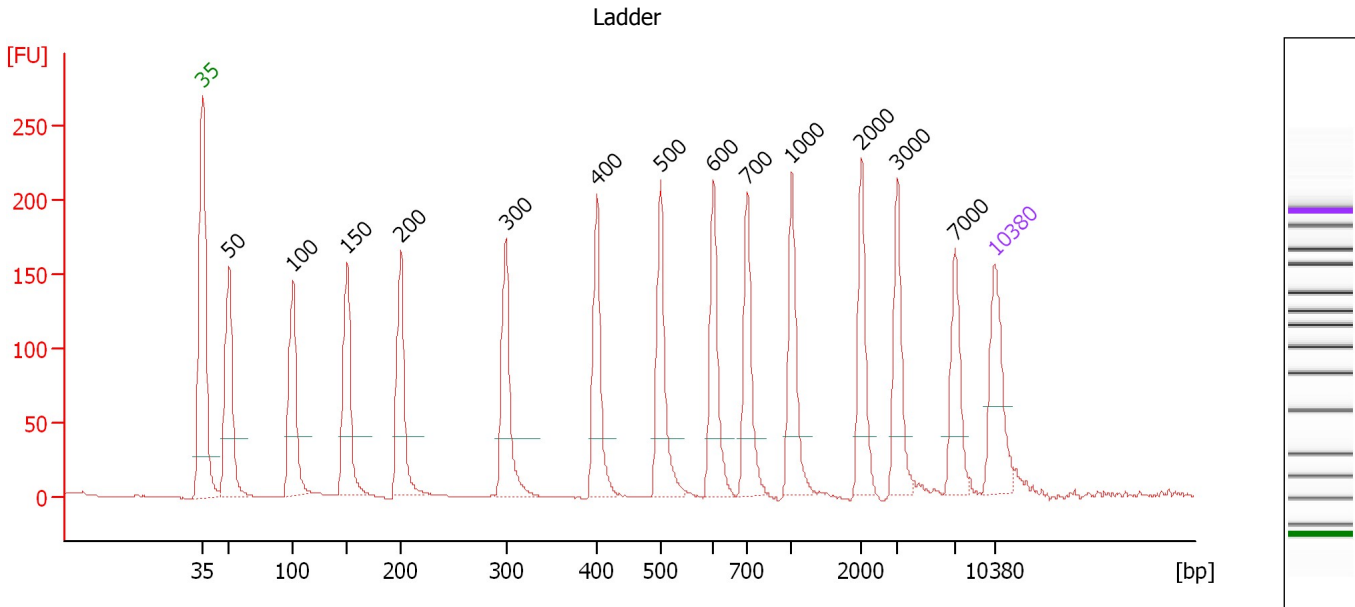
Ladder

Ladder Peak	Size	Area
1	35	160
2	50	210
3	100	208
4	150	221
5	200	242
6	300	270
7	400	305
8	500	306
9	600	336
10	700	321
11	1000	366
12	2000	413
13	3000	411
14	7000	400
15	10380	214

Assay Class: High Sensitivity DNA Assay
 Data Path: C:\...ents and Settings\Bioanalyzer\2013-09-12\2013-09-12_002.xad

Created: 9/12/2013 10:35:18 AM
 Modified: 9/12/2013 11:25:21 AM

Electropherogram Summary



Overall Results for Ladder

Noise: 0.2

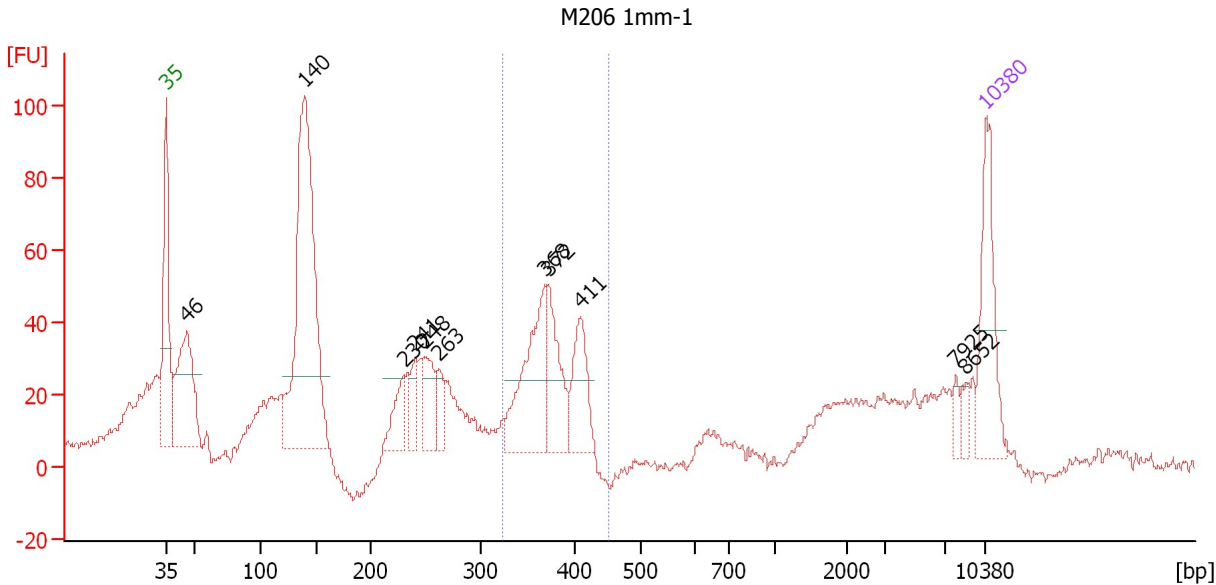
Peak table for Ladder

Peak	Size [bp]	Conc. [pg/μl]	Molarity [pmol/l]	Observations
1	35	125.00	5,411.3	Lower Marker
2	50	150.00	4,545.5	Ladder Peak
3	100	150.00	2,272.7	Ladder Peak
4	150	150.00	1,515.2	Ladder Peak
5	200	150.00	1,136.4	Ladder Peak
6	300	150.00	757.6	Ladder Peak
7	400	150.00	568.2	Ladder Peak
8	500	150.00	454.5	Ladder Peak
9	600	150.00	378.8	Ladder Peak
10	700	150.00	324.7	Ladder Peak
11	1,000	150.00	227.3	Ladder Peak
12	2,000	150.00	113.6	Ladder Peak
13	3,000	150.00	75.8	Ladder Peak
14	7,000	150.00	32.5	Ladder Peak
15	10,380	75.00	10.9	Upper Marker

Assay Class: High Sensitivity DNA Assay
 Data Path: C:\...ents and Settings\Bioanalyzer\2013-09-12\2013-09-12_002.xad

Created: 9/12/2013 10:35:18 AM
 Modified: 9/12/2013 11:25:21 AM

Electropherogram Summary Continued ...



Setpoint Deviations for sample 1 : M206 1mm-1

Height Threshold [FU] : 20

Overall Results for sample 1 : M206 1mm-1

Number of peaks found: 11 Corr. Area 1: 293.6
 Noise: 1.7

Peak table for sample 1 : M206 1mm-1

Peak	Size [bp]	Conc. [pg/μl]	Molarity [pmol/l]	Observations
1	35	125.00	5,411.3	Lower Marker
2	46	176.10	5,775.5	
3	140	449.74	4,874.1	
4	230	39.79	262.3	
5	241	29.31	184.6	
6	248	53.75	328.1	
7	263	30.44	175.6	
8	368	129.47	532.4	
9	372	73.50	299.4	
10	411	66.36	244.9	
11	7,925	9.23	1.8	
12	8,652	10.86	1.9	
13	10,380	75.00	10.9	Upper Marker

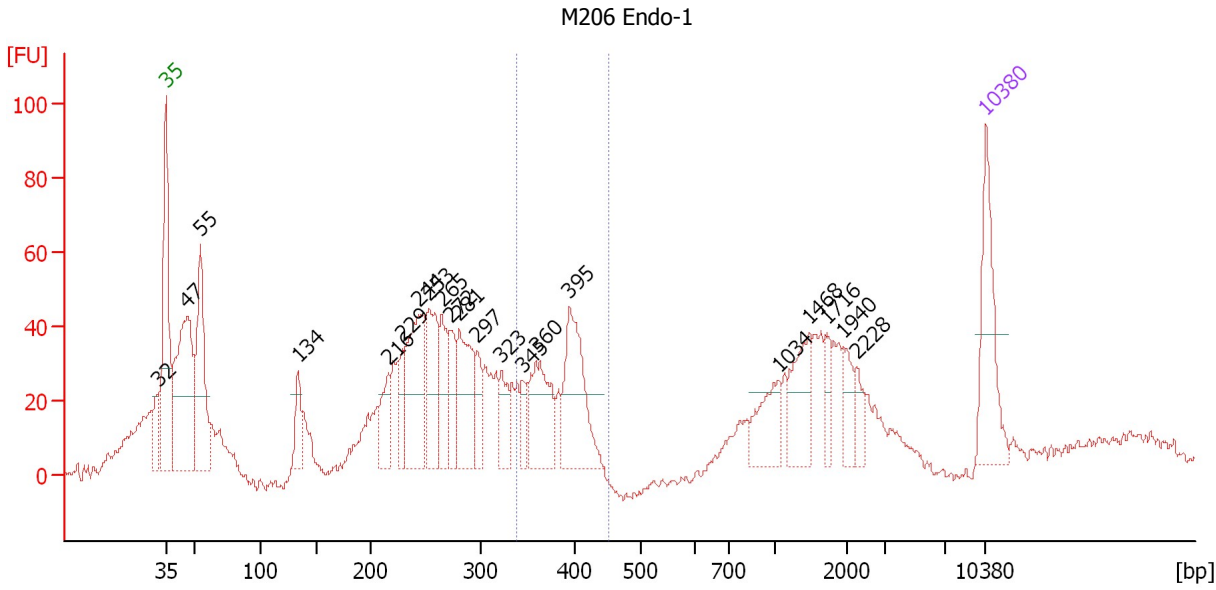
Region table for sample 1 : M206 1mm-1

From [bp]	To [bp]	Average Size [bp]	Molarity [pmol/l]	Conc. [pg/μl]	Corr. Area	% of Total	Size distribution in CV [%]	Color
324	454	375	1,201.7	296.26	293.6	18	6.8	Blue

Assay Class: High Sensitivity DNA Assay
 Data Path: C:\...ents and Settings\Bioanalyzer\2013-09-12\2013-09-12_002.xad

Created: 9/12/2013 10:35:18 AM
 Modified: 9/12/2013 11:25:21 AM

Electropherogram Summary Continued ...



Setpoint Deviations for sample 2 : M206 Endo-1

Height Threshold [FU] : 20

Overall Results for sample 2 : M206 Endo-1

Number of peaks found: 21 Corr. Area 1: 239.3
 Noise: 1.8

Peak table for sample 2 : M206 Endo-1

Peak	Size [bp]	Conc. [pg/μl]	Molarity [pmol/l]	Observations
1	32	0.00	0.0	
2	35	125.00	5,411.3	Lower Marker
3	47	261.07	8,493.7	
4	55	163.24	4,499.9	
5	134	46.07	520.6	
6	216	44.81	314.7	
7	229	42.00	278.4	
8	244	130.99	815.0	
9	253	97.61	583.8	
10	265	62.31	356.0	
11	272	44.27	246.3	
12	281	104.62	563.8	
13	297	33.81	172.4	
14	323	37.12	174.2	
15	345	23.42	102.8	
16	360	90.76	382.4	
17	395	119.67	458.8	
18	1,034	48.42	71.0	
19	1,468	57.69	59.6	
20	1,716	19.95	17.6	
21	1,940	23.27	18.2	
22	2,228	17.05	11.6	


Assay Class: High Sensitivity DNA Assay
Data Path: C:\...ents and Settings\Bioanalyzer\2013-09-12\2013-09-12_002.xad

Created: 9/12/2013 10:35:18 AM
Modified: 9/12/2013 11:25:21 AM

Electropherogram Summary Continued ...**... Peak table for sample 2 : M206 Endo-1**

Peak	Size [bp]	Conc. [pg/ μ l]	Molarity [pmol/l]	Observations
23	10,380	75.00	10.9	Upper Marker

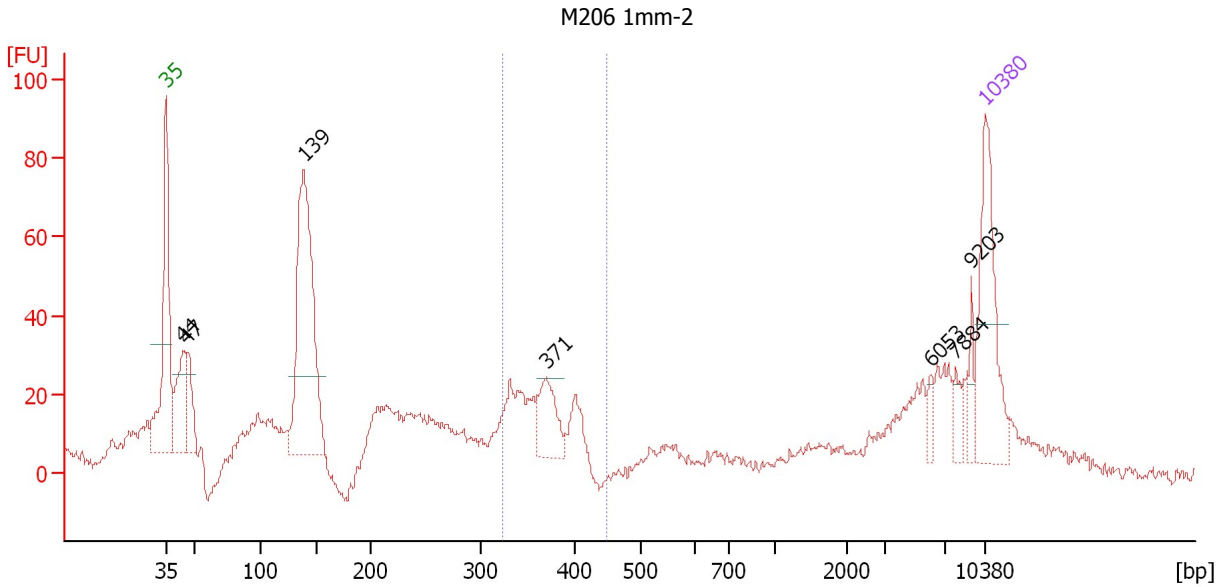
Region table for sample 2 : M206 Endo-1

From [bp]	To [bp]	Average Size [bp]	Molarity [pmol/l]	Conc. [pg/ μ l]	Corr. Area	% of Total	Size distribution in CV [%]	Color
339	452	382	1,076.0	270.28	239.3	13	6.6	

Assay Class: High Sensitivity DNA Assay
 Data Path: C:\...ents and Settings\Bioanalyzer\2013-09-12\2013-09-12_002.xad

Created: 9/12/2013 10:35:18 AM
 Modified: 9/12/2013 11:25:21 AM

Electropherogram Summary Continued ...



Setpoint Deviations for sample 3 : M206 1mm-2

Height Threshold [FU] : 20

Overall Results for sample 3 : M206 1mm-2

Number of peaks found: 7 Corr. Area 1: 160.1
 Noise: 2.0

Peak table for sample 3 : M206 1mm-2

Peak	Size [bp]	Conc. [pg/μl]	Molarity [pmol/l]	Observations
1	35	125.00	5,411.3	Lower Marker
2	44	71.66	2,462.5	
3	47	45.32	1,473.7	
4	139	264.98	2,886.4	
5	371	43.47	177.7	
6	6,053	8.40	2.1	
7	7,884	11.49	2.2	
8	9,203	11.70	1.9	
9	10,380	75.00	10.9	Upper Marker

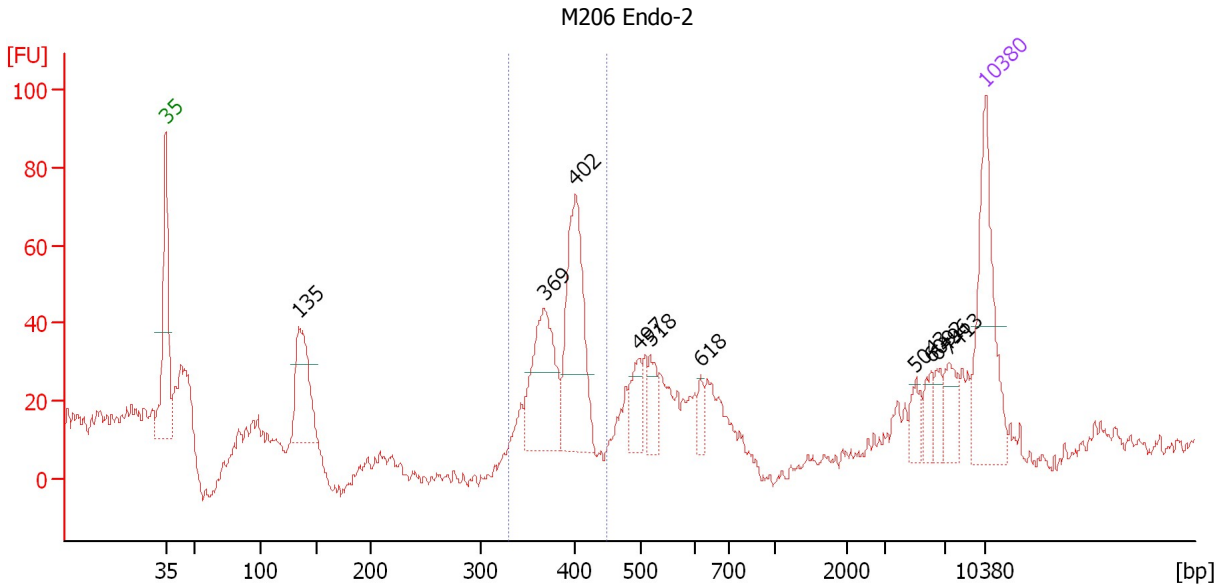
Region table for sample 3 : M206 1mm-2

From [bp]	To [bp]	Average Size [bp]	Molarity [pmol/l]	Conc. [pg/μl]	Corr. Area	% of Total	Size distribution in CV [%]	Color
323	448	365	627.9	150.89	160.1	14	7.0	Blue

Assay Class: High Sensitivity DNA Assay
 Data Path: C:\...ents and Settings\Bioanalyzer\2013-09-12\2013-09-12_002.xad

Created: 9/12/2013 10:35:18 AM
 Modified: 9/12/2013 11:25:21 AM

Electropherogram Summary Continued ...



Setpoint Deviations for sample 4 : M206 Endo-2

Height Threshold [FU] : 20

Overall Results for sample 4 : M206 Endo-2

Number of peaks found: 10 Corr. Area 1: 253.1
 Noise: 2.2

Peak table for sample 4 : M206 Endo-2

Peak	Size [bp]	Conc. [pg/μl]	Molarity [pmol/l]	Observations
1	35	125.00	5,411.3	Lower Marker
2	135	86.94	978.4	
3	369	98.97	406.8	
4	402	122.22	460.6	
5	497	26.82	81.7	
6	518	21.04	61.5	
7	618	10.61	26.0	
8	5,043	12.09	3.6	
9	6,092	11.81	2.9	
10	6,496	10.64	2.5	
11	7,413	18.12	3.7	
12	10,380	75.00	10.9	Upper Marker

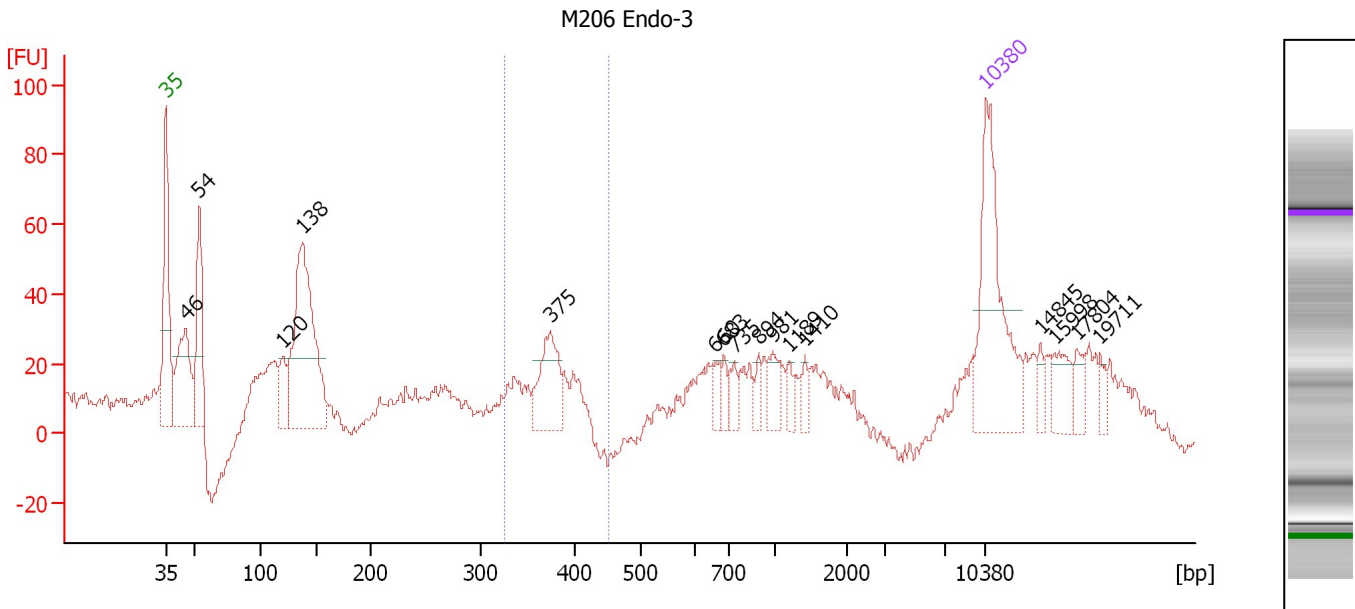
Region table for sample 4 : M206 Endo-2

From [bp]	To [bp]	Average Size [bp]	Molarity [pmol/l]	Conc. [pg/μl]	Corr. Area	% of Total	Size distribution in CV [%]	Color
331	449	386	866.7	220.38	253.1	29	5.6	Blue

Assay Class: High Sensitivity DNA Assay
 Data Path: C:\...ents and Settings\Bioanalyzer\2013-09-12\2013-09-12_002.xad

Created: 9/12/2013 10:35:18 AM
 Modified: 9/12/2013 11:25:21 AM

Electropherogram Summary Continued ...



Setpoint Deviations for sample 5 : M206 Endo-3

Height Threshold [FU] : 20

Overall Results for sample 5 : M206 Endo-3

Number of peaks found: 16 Corr. Area 1: 86.5
 Noise: 2.2

Peak table for sample 5 : M206 Endo-3

Peak	Size [bp]	Conc. [pg/μl]	Molarity [pmol/l]	Observations
1	35	125.00	5,411.3	Lower Marker
2	46	76.80	2,547.1	
3	54	67.43	1,884.6	
4	120	22.96	289.0	
5	138	162.59	1,787.7	
6	375	43.87	177.4	
7	660	9.09	20.9	
8	683	8.19	18.1	
9	735	9.80	20.2	
10	894	7.31	12.4	
11	981	13.14	20.3	
12	1,189	6.41	8.2	
13	1,410	6.75	7.3	
14	10,380	75.00	10.9	Upper Marker
15	14,845	0.00	0.0	
16	15,998	0.00	0.0	
17	17,804	0.00	0.0	
18	19,711	0.00	0.0	

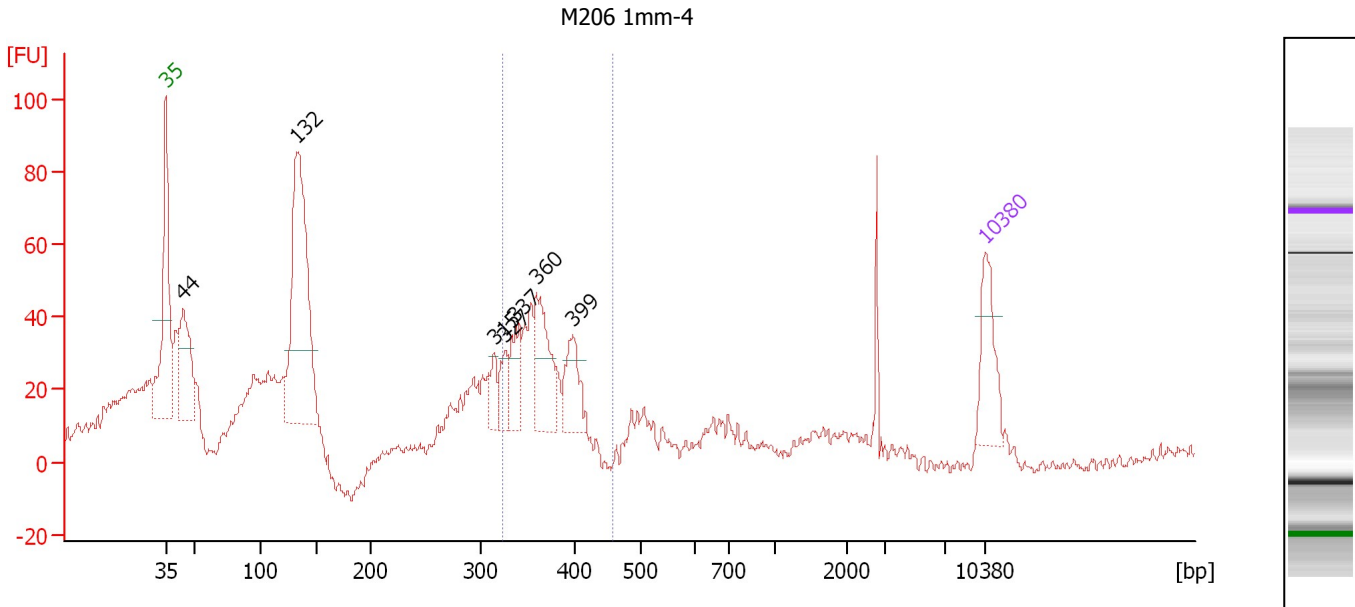
Region table for sample 5 : M206 Endo-3

From [bp]	To [bp]	Average Size [bp]	Molarity [pmol/l]	Conc. [pg/μl]	Corr. Area	% of Total	Size distribution in CV [%]	Color
325	451	372	224.1	54.92	86.5	11	5.7	Blue

Assay Class: High Sensitivity DNA Assay
 Data Path: C:\...ents and Settings\Bioanalyzer\2013-09-12\2013-09-12_002.xad

Created: 9/12/2013 10:35:18 AM
 Modified: 9/12/2013 11:25:21 AM

Electropherogram Summary Continued ...



Setpoint Deviations for sample 6 : M206 1mm-4

Height Threshold [FU] : 20

Overall Results for sample 6 : M206 1mm-4

Number of peaks found: 7 Corr. Area 1: 261.0
 Noise: 2.1

Peak table for sample 6 : M206 1mm-4

Peak	Size [bp]	Conc. [pg/μl]	Molarity [pmol/l]	Observations
1	35	125.00	5,411.3	Lower Marker
2	44	182.56	6,264.7	
3	132	502.02	5,743.2	
4	315	33.54	161.4	
5	327	39.38	182.6	
6	337	62.93	282.7	
7	360	129.81	545.7	
8	399	78.84	299.6	
9	10,380	75.00	10.9	Upper Marker

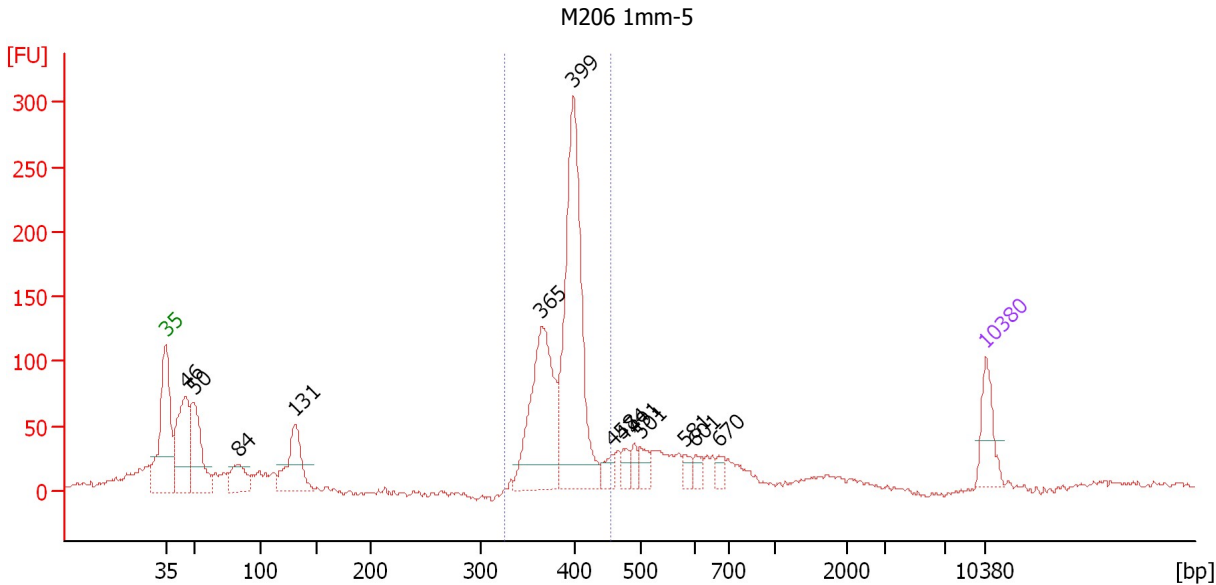
Region table for sample 6 : M206 1mm-4

From [bp]	To [bp]	Average Size [bp]	Molarity [pmol/l]	Conc. [pg/μl]	Corr. Area	% of Total	Size distribution in CV [%]	Color
324	458	365	1,903.6	457.86	261.0	23	6.7	Blue

Assay Class: High Sensitivity DNA Assay
 Data Path: C:\...ents and Settings\Bioanalyzer\2013-09-12\2013-09-12_002.xad

Created: 9/12/2013 10:35:18 AM
 Modified: 9/12/2013 11:25:21 AM

Electropherogram Summary Continued ...



Setpoint Deviations for sample 7 : M206 1mm-5

Height Threshold [FU] : 20

Overall Results for sample 7 : M206 1mm-5

Number of peaks found: 13 Corr. Area 1: 1,017.0
 Noise: 2.2

Peak table for sample 7 : M206 1mm-5

Peak	Size [bp]	Conc. [pg/μl]	Molarity [pmol/l]	Observations
1	35	125.00	5,411.3	Lower Marker
2	46	320.62	10,632.6	
3	50	235.40	7,099.7	
4	84	99.55	1,800.8	
5	131	193.78	2,240.7	
6	365	418.71	1,737.5	
7	399	663.62	2,517.5	
8	458	36.40	120.4	
9	474	31.59	100.9	
10	491	28.68	88.5	
11	501	39.05	118.2	
12	581	23.19	60.5	
13	601	21.72	54.8	
14	670	23.07	52.2	
15	10,380	75.00	10.9	Upper Marker

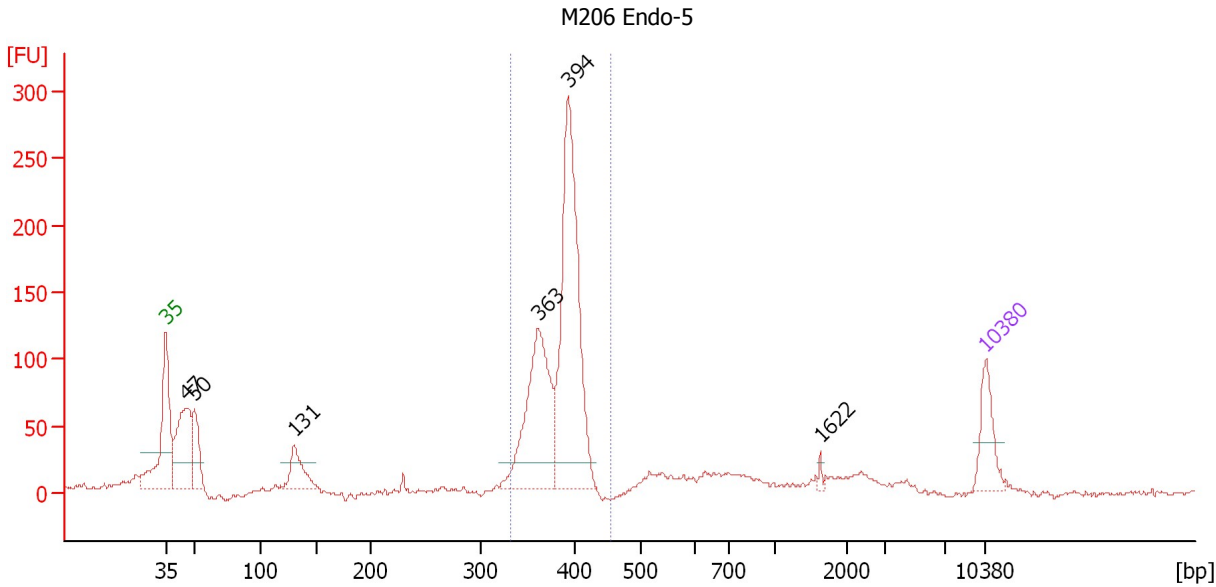
Region table for sample 7 : M206 1mm-5

From [bp]	To [bp]	Average Size [bp]	Molarity [pmol/l]	Conc. [pg/μl]	Corr. Area	% of Total	Size distribution in CV [%]	Color
326	457	389	4,315.1	1,105.61	1,017.0	46	5.9	Blue

Assay Class: High Sensitivity DNA Assay
 Data Path: C:\...ents and Settings\Bioanalyzer\2013-09-12\2013-09-12_002.xad

Created: 9/12/2013 10:35:18 AM
 Modified: 9/12/2013 11:25:21 AM

Electropherogram Summary Continued ...



Setpoint Deviations for sample 8 : M206 Endo-5

Height Threshold [FU] : 20

Overall Results for sample 8 : M206 Endo-5

Number of peaks found: 6 Corr. Area 1: 965.1
 Noise: 1.8

Peak table for sample 8 : M206 Endo-5

Peak	Size [bp]	Conc. [pg/μl]	Molarity [pmol/l]	Observations
1	35	125.00	5,411.3	Lower Marker
2	47	277.06	9,014.1	
3	50	127.40	3,827.2	
4	131	106.08	1,230.2	
5	363	392.62	1,640.5	
6	394	637.73	2,453.7	
7	1,622	8.07	7.5	
8	10,380	75.00	10.9	Upper Marker

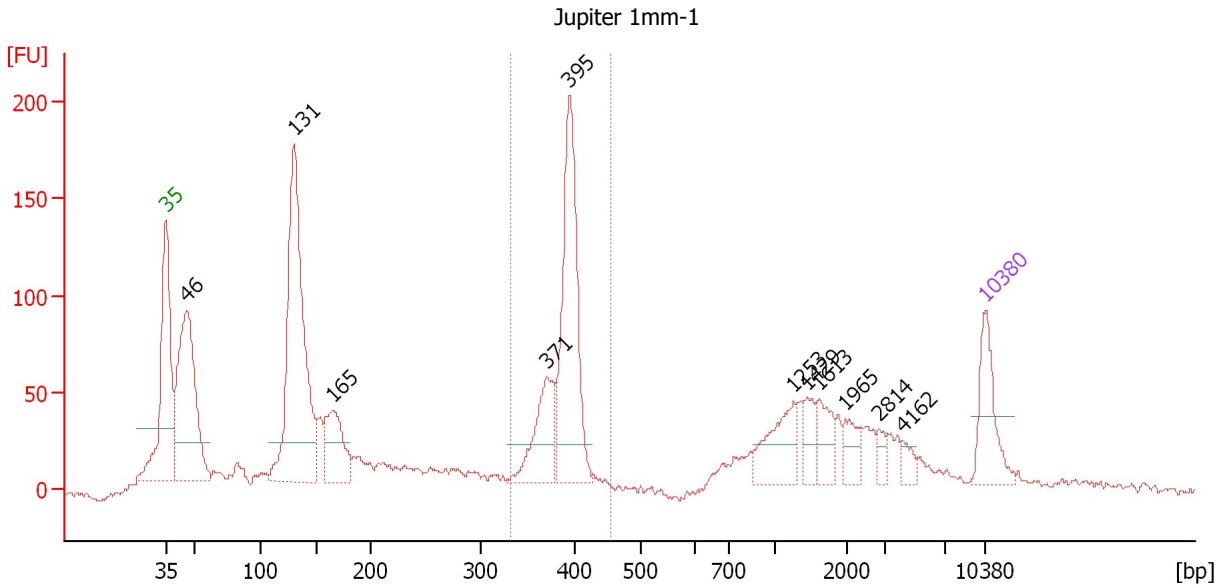
Region table for sample 8 : M206 Endo-5

From [bp]	To [bp]	Average Size [bp]	Molarity [pmol/l]	Conc. [pg/μl]	Corr. Area	% of Total	Size distribution in CV [%]	Color
333	454	384	3,977.0	1,006.13	965.1	64	5.3	Blue

Assay Class: High Sensitivity DNA Assay
 Data Path: C:\...ents and Settings\Bioanalyzer\2013-09-12\2013-09-12_002.xad

Created: 9/12/2013 10:35:18 AM
 Modified: 9/12/2013 11:25:21 AM

Electropherogram Summary Continued ...



Setpoint Deviations for sample 9 : Jupiter 1mm-1

Height Threshold [FU] : 20

Overall Results for sample 9 : Jupiter 1mm-1

Number of peaks found: 11 Corr. Area 1: 546.8
 Noise: 2.1

Peak table for sample 9 : Jupiter 1mm-1

Peak	Size [bp]	Conc. [pg/μl]	Molarity [pmol/l]	Observations
1	35	125.00	5,411.3	Lower Marker
2	46	446.85	14,590.0	
3	131	630.01	7,301.7	
4	165	138.86	1,271.4	
5	371	131.32	536.7	
6	395	333.41	1,278.8	
7	1,253	83.53	101.0	
8	1,429	37.66	39.9	
9	1,613	46.71	43.9	
10	1,965	34.30	26.4	
11	2,814	15.99	8.6	
12	4,162	14.95	5.4	
13	10,380	75.00	10.9	Upper Marker

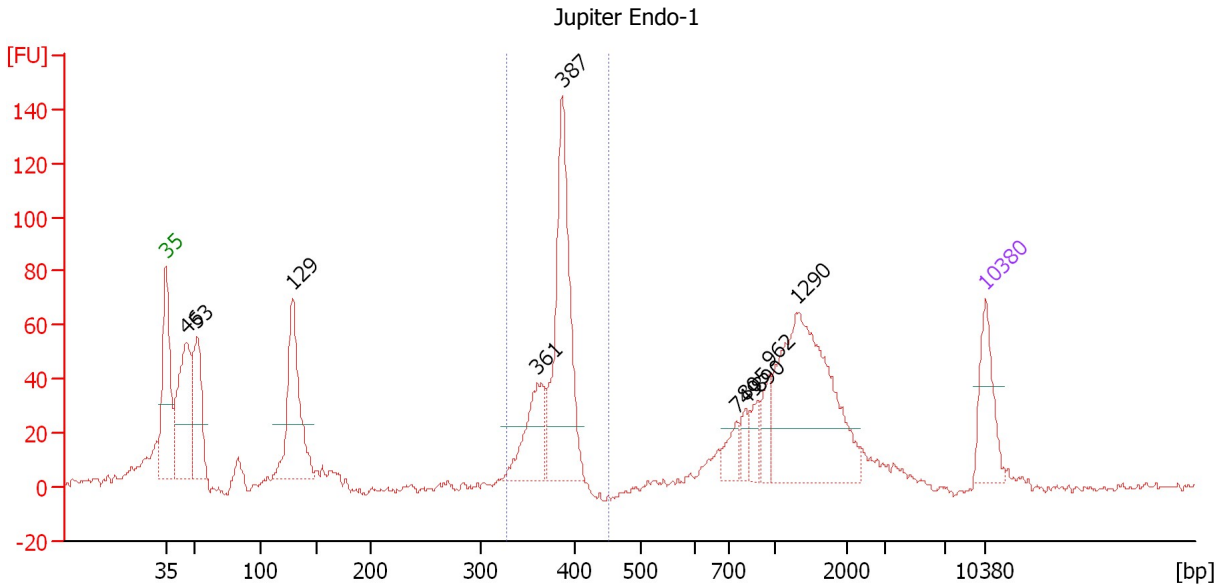
Region table for sample 9 : Jupiter 1mm-1

From [bp]	To [bp]	Average Size [bp]	Molarity [pmol/l]	Conc. [pg/μl]	Corr. Area	% of Total	Size distribution in CV [%]	Color
333	454	388	1,979.7	506.57	546.8	22	4.7	Blue

Assay Class: High Sensitivity DNA Assay
 Data Path: C:\...ents and Settings\Bioanalyzer\2013-09-12\2013-09-12_002.xad

Created: 9/12/2013 10:35:18 AM
 Modified: 9/12/2013 11:25:21 AM

Electropherogram Summary Continued ...



Setpoint Deviations for sample 10 : Jupiter Endo-1

Height Threshold [FU] : 20

Overall Results for sample 10 : Jupiter Endo-1

Number of peaks found: 10 Corr. Area 1: 350.1
 Noise: 1.4

Peak table for sample 10 : Jupiter Endo-1

Peak	Size [bp]	Conc. [pg/μl]	Molarity [pmol/l]	Observations
1	35	125.00	5,411.3	Lower Marker
2	46	294.47	9,663.6	
3	53	187.09	5,381.7	
4	129	277.77	3,263.9	
5	361	131.98	553.7	
6	387	353.93	1,386.0	
7	749	35.46	71.7	
8	805	26.56	50.0	
9	890	32.17	54.8	
10	962	38.67	60.9	
11	1,290	358.79	421.4	
12	10,380	75.00	10.9	Upper Marker

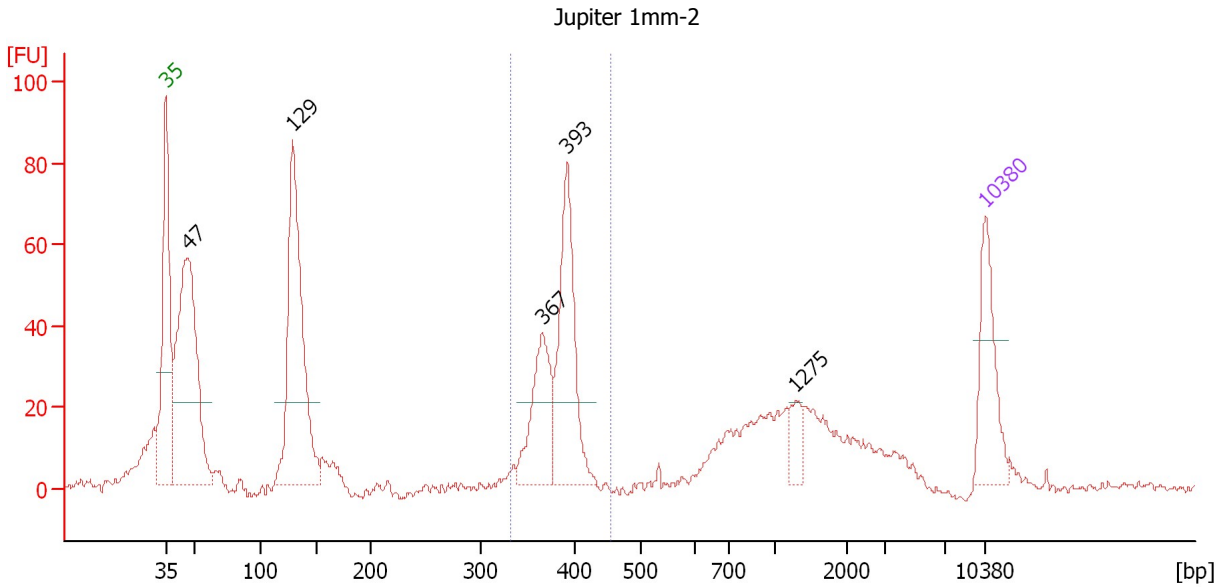
Region table for sample 10 : Jupiter Endo-1

From [bp]	To [bp]	Average Size [bp]	Molarity [pmol/l]	Conc. [pg/μl]	Corr. Area	% of Total	Size distribution in CV [%]	Color
328	453	379	1,965.0	492.03	350.1	27	4.4	Blue

Assay Class: High Sensitivity DNA Assay
 Data Path: C:\...ents and Settings\Bioanalyzer\2013-09-12\2013-09-12_002.xad

Created: 9/12/2013 10:35:18 AM
 Modified: 9/12/2013 11:25:21 AM

Electropherogram Summary Continued ...



Setpoint Deviations for sample 11 : Jupiter 1mm-2

Height Threshold [FU] : 20

Overall Results for sample 11 : Jupiter 1mm-2

Number of peaks found: 5 Corr. Area 1: 235.2
 Noise: 1.3

Peak table for sample 11 : Jupiter 1mm-2

Peak	Size [bp]	Conc. [pg/μl]	Molarity [pmol/l]	Observations
1	35	125.00	5,411.3	Lower Marker
2	47	443.15	14,335.1	
3	129	381.03	4,480.2	
4	367	120.81	499.0	
5	393	190.15	734.0	
6	1,275	27.43	32.6	
7	10,380	75.00	10.9	Upper Marker

Region table for sample 11 : Jupiter 1mm-2

From [bp]	To [bp]	Average Size [bp]	Molarity [pmol/l]	Conc. [pg/μl]	Corr. Area	% of Total	Size distribution in CV [%]	Color
332	454	382	1,223.5	308.04	235.2	24	4.6	Blue

Assay Class: High Sensitivity DNA Assay
Data Path: C:\...ents and Settings\Bioanalyzer\2013-09-12\2013-09-12_002.xad

Created: 9/12/2013 10:35:18 AM
Modified: 9/12/2013 11:25:21 AM

Gel Image

