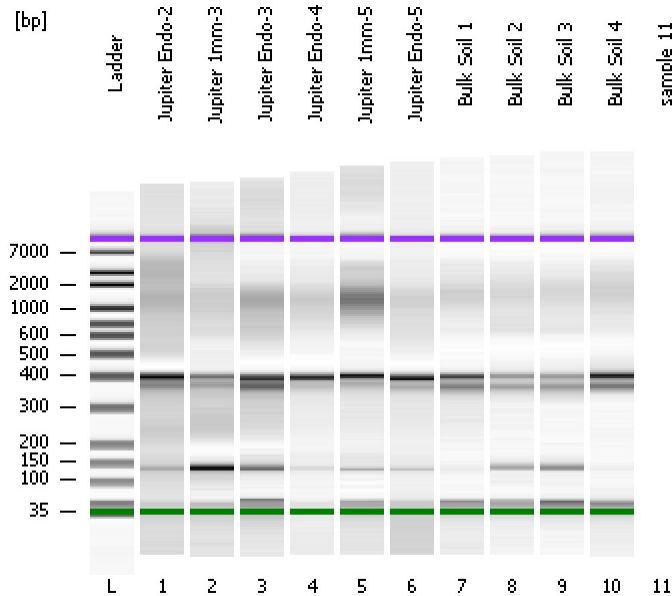


Assay Class: High Sensitivity DNA Assay
Data Path: C:\...ents and Settings\Bioanalyzer\2013-09-12\2013-09-12_003.xad

Created: 9/12/2013 11:26:15 AM
Modified: 9/12/2013 12:06:52 PM

Electrophoresis File Run Summary



Instrument Information:

Instrument Name: DE13701086 Firmware: C.01.069
Serial#: DE13701086 Type: G2938B

Assay Information:

Assay Origin Path: C:\Program Files\Agilent\2100 bioanalyzer\2100 expert\assays\dsDNA\High Sensitivity DNA.xsy
Assay Class: High Sensitivity DNA Assay
Version: 1.03
Assay Comments: Copyright © 2003-2010 Agilent Technologies

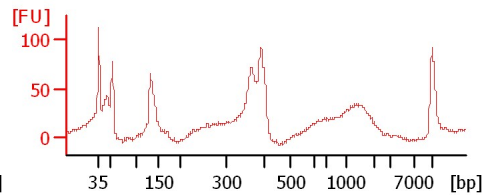
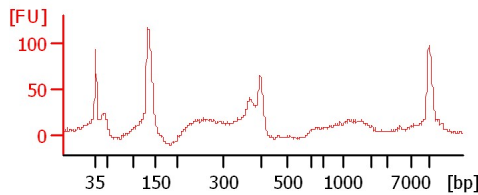
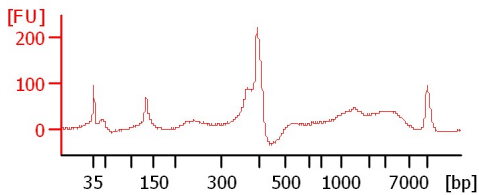
Chip Information:

Chip Lot #:
Reagent Kit Lot #:
Chip Comments:

Jupiter Endo-2

Jupiter 1mm-3

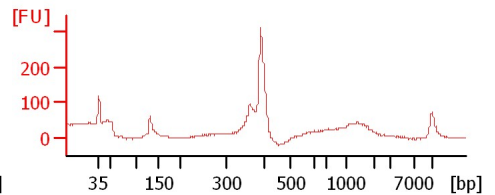
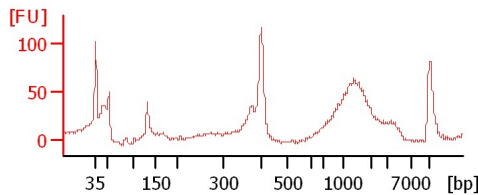
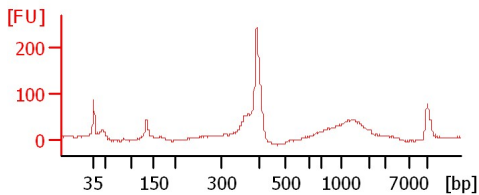
Jupiter Endo-3



Jupiter Endo-4

Jupiter 1mm-5

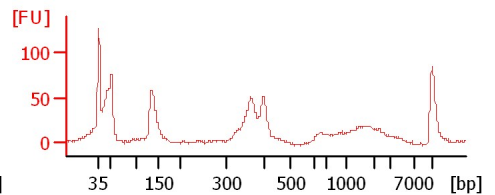
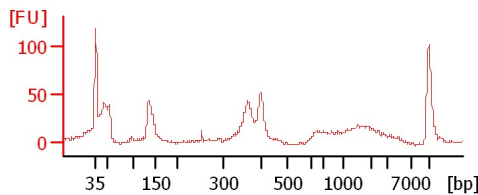
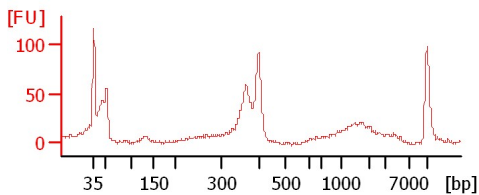
Jupiter Endo-5



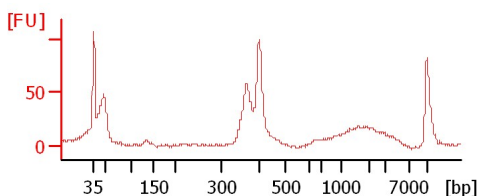
Bulk Soil 1

Bulk Soil 2

Bulk Soil 3



Bulk Soil 4



Assay Class: High Sensitivity DNA Assay
 Data Path: C:\...ents and Settings\Bioanalyzer\2013-09-12\2013-09-12_003.xad

Created: 9/12/2013 11:26:15 AM
 Modified: 9/12/2013 12:06:52 PM

Electrophoresis File Run Summary (Chip Summary)

Sample Name	Sample Comment	Rest. Digest	Status	Observation	Result Label	Result Color
Jupiter Endo-2		<input type="checkbox"/>	✓			
Jupiter 1mm-3		<input type="checkbox"/>	✓			
Jupiter Endo-3		<input type="checkbox"/>	✓			
Jupiter Endo-4		<input type="checkbox"/>	✓			
Jupiter 1mm-5		<input type="checkbox"/>	✓			
Jupiter Endo-5		<input type="checkbox"/>	✓			
Bulk Soil 1		<input type="checkbox"/>	✓			
Bulk Soil 2		<input type="checkbox"/>	✓			
Bulk Soil 3		<input type="checkbox"/>	✓			
Bulk Soil 4		<input type="checkbox"/>	✓			
sample 11		<input type="checkbox"/>	✓			
Ladder		<input type="checkbox"/>	✓			

Chip Lot #

Reagent Kit Lot #

Chip Comments :

Assay Class: High Sensitivity DNA Assay
Data Path: C:\...ents and Settings\Bioanalyzer\2013-09-12\2013-09-12_003.xad

Created: 9/12/2013 11:26:15 AM
Modified: 9/12/2013 12:06:52 PM

Electrophoresis Assay Details

General Analysis Settings

Number of Available Sample and Ladder Wells (Max.) : 12
Minimum Visible Range [s] : 32
Maximum Visible Range [s] : 138
Start Analysis Time Range [s] : 33
End Analysis Time Range [s] : 137.5
Ladder Concentration [pg/μl] : 1950
Uses Standard Area for Ladder Fragments
Lower Marker Concentration [pg/μl] : 125
Upper Marker Concentration [pg/μl] : 75
Used Upper Marker for Quantitation
Standard Curve Fit is Point to Point
Show Data Aligned to Lower and Upper Marker

Integrator Settings

Integration Start Time [s] : 33.05
Integration End Time [s] : 137
Slope Threshold : 0.8
Height Threshold [FU] : 5
Area Threshold : 0.1
Width Threshold [s] : 0.6
Baseline Plateau [s] : 0.5

Filter Settings

Filter Width [s] : 0.5
Polynomial Order : 4

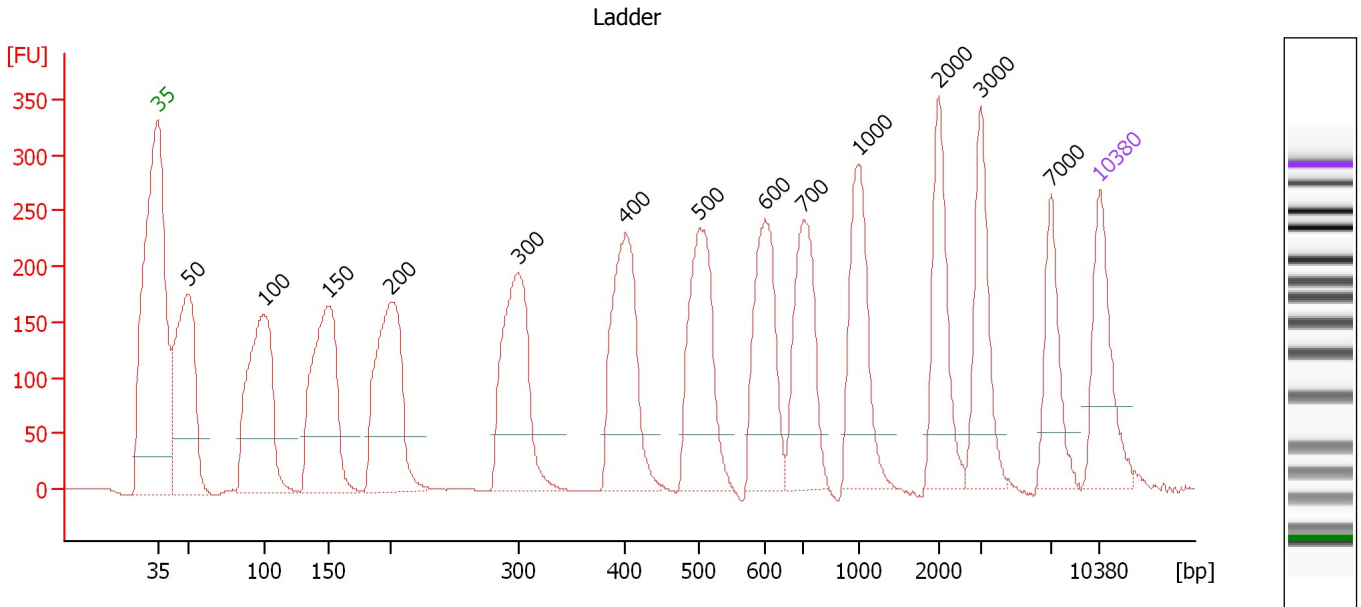
Ladder

Ladder Peak	Size	Area
1	35	160
2	50	210
3	100	208
4	150	221
5	200	242
6	300	270
7	400	305
8	500	306
9	600	336
10	700	321
11	1000	366
12	2000	413
13	3000	411
14	7000	400
15	10380	214

Assay Class: High Sensitivity DNA Assay
 Data Path: C:\...ents and Settings\Bioanalyzer\2013-09-12\2013-09-12_003.xad

Created: 9/12/2013 11:26:15 AM
 Modified: 9/12/2013 12:06:52 PM

Electropherogram Summary



Overall Results for Ladder

Noise: 0.2

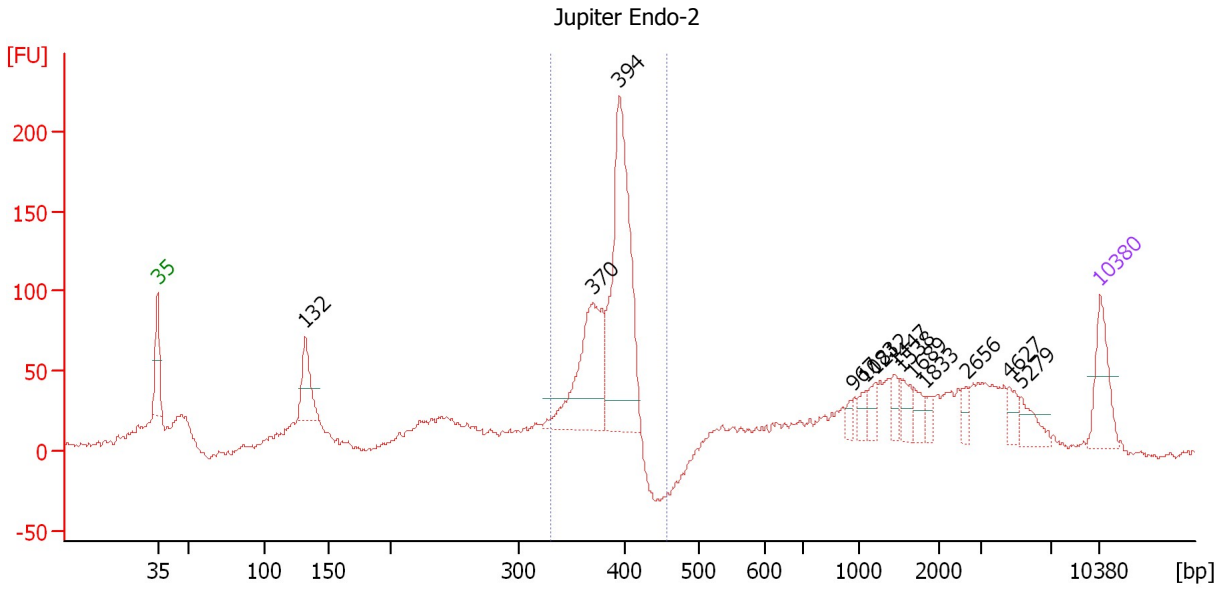
Peak table for Ladder

Peak	Size [bp]	Conc. [pg/μl]	Molarity [pmol/l]	Observations
1	35	125.00	5,411.3	Lower Marker
2	50	150.00	4,545.5	Ladder Peak
3	100	150.00	2,272.7	Ladder Peak
4	150	150.00	1,515.2	Ladder Peak
5	200	150.00	1,136.4	Ladder Peak
6	300	150.00	757.6	Ladder Peak
7	400	150.00	568.2	Ladder Peak
8	500	150.00	454.5	Ladder Peak
9	600	150.00	378.8	Ladder Peak
10	700	150.00	324.7	Ladder Peak
11	1,000	150.00	227.3	Ladder Peak
12	2,000	150.00	113.6	Ladder Peak
13	3,000	150.00	75.8	Ladder Peak
14	7,000	150.00	32.5	Ladder Peak
15	10,380	75.00	10.9	Upper Marker

Assay Class: High Sensitivity DNA Assay
 Data Path: C:\...ents and Settings\Bioanalyzer\2013-09-12\2013-09-12_003.xad

Created: 9/12/2013 11:26:15 AM
 Modified: 9/12/2013 12:06:52 PM

Electropherogram Summary Continued ...



Setpoint Deviations for sample 1 : Jupiter Endo-2

Height Threshold [FU] : 20

Overall Results for sample 1 : Jupiter Endo-2

Number of peaks found: 13 Corr. Area 1: 745.8
 Noise: 1.9

Peak table for sample 1 : Jupiter Endo-2

Peak	Size [bp]	Conc. [pg/μl]	Molarity [pmol/l]	Observations
1	35	125.00	5,411.3	Lower Marker
2	132	114.37	1,308.2	
3	370	273.20	1,118.7	
4	394	472.10	1,814.7	
5	967	13.94	21.8	
6	1,083	18.95	26.5	
7	1,212	25.77	32.2	
8	1,447	24.76	25.9	
9	1,538	30.50	30.0	
10	1,689	21.86	19.6	
11	1,833	14.20	11.7	
12	2,656	16.56	9.4	
13	4,627	24.43	8.0	
14	5,279	33.83	9.7	
15	10,380	75.00	10.9	Upper Marker

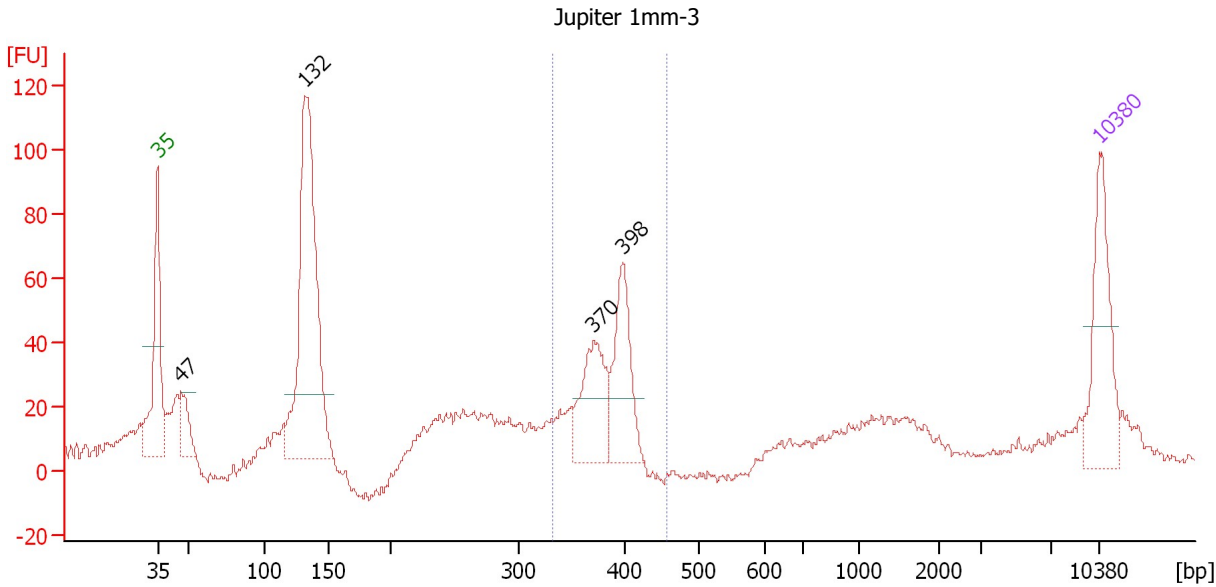
Region table for sample 1 : Jupiter Endo-2

From [bp]	To [bp]	Average Size [bp]	Molarity [pmol/l]	Conc. [pg/μl]	Corr. Area	% of Total	Size distribution in CV [%]	Color
330	455	384	3,295.1	833.61	745.8	40	5.1	Blue

Assay Class: High Sensitivity DNA Assay
 Data Path: C:\...ents and Settings\Bioanalyzer\2013-09-12\2013-09-12_003.xad

Created: 9/12/2013 11:26:15 AM
 Modified: 9/12/2013 12:06:52 PM

Electropherogram Summary Continued ...



Setpoint Deviations for sample 2 : Jupiter 1mm-3

Height Threshold [FU] : 20

Overall Results for sample 2 : Jupiter 1mm-3

Number of peaks found: 4 Corr. Area 1: 268.3
 Noise: 1.7

Peak table for sample 2 : Jupiter 1mm-3

Peak	Size [bp]	Conc. [pg/μl]	Molarity [pmol/l]	Observations
1	35	125.00	5,411.3	Lower Marker
2	47	44.34	1,437.7	
3	132	373.81	4,287.3	
4	370	93.70	383.3	
5	398	93.35	355.8	
6	10,380	75.00	10.9	Upper Marker

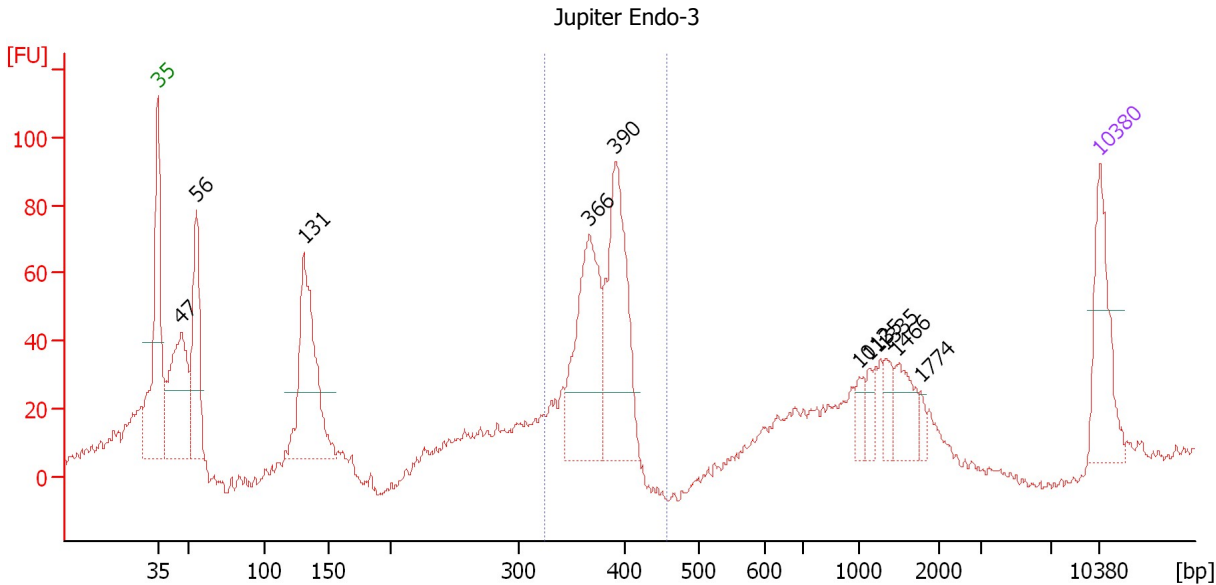
Region table for sample 2 : Jupiter 1mm-3

From [bp]	To [bp]	Average Size [bp]	Molarity [pmol/l]	Conc. [pg/μl]	Corr. Area	% of Total	Size distribution in CV [%]	Color
333	455	379	906.8	226.45	268.3	20	5.6	Blue

Assay Class: High Sensitivity DNA Assay
 Data Path: C:\...ents and Settings\Bioanalyzer\2013-09-12\2013-09-12_003.xad

Created: 9/12/2013 11:26:15 AM
 Modified: 9/12/2013 12:06:52 PM

Electropherogram Summary Continued ...



Setpoint Deviations for sample 3 : Jupiter Endo-3

Height Threshold [FU] : 20

Overall Results for sample 3 : Jupiter Endo-3

Number of peaks found: 10 Corr. Area 1: 429.9
 Noise: 1.9

Peak table for sample 3 : Jupiter Endo-3

Peak	Size [bp]	Conc. [pg/μl]	Molarity [pmol/l]	Observations
1	35	125.00	5,411.3	Lower Marker
2	47	203.70	6,629.2	
3	56	155.59	4,242.2	
4	131	243.36	2,815.0	
5	366	204.24	846.1	
6	390	215.23	835.5	
7	1,012	17.40	26.0	
8	1,135	18.85	25.2	
9	1,335	17.93	20.3	
10	1,466	40.83	42.2	
11	1,774	8.79	7.5	
12	10,380	75.00	10.9	Upper Marker

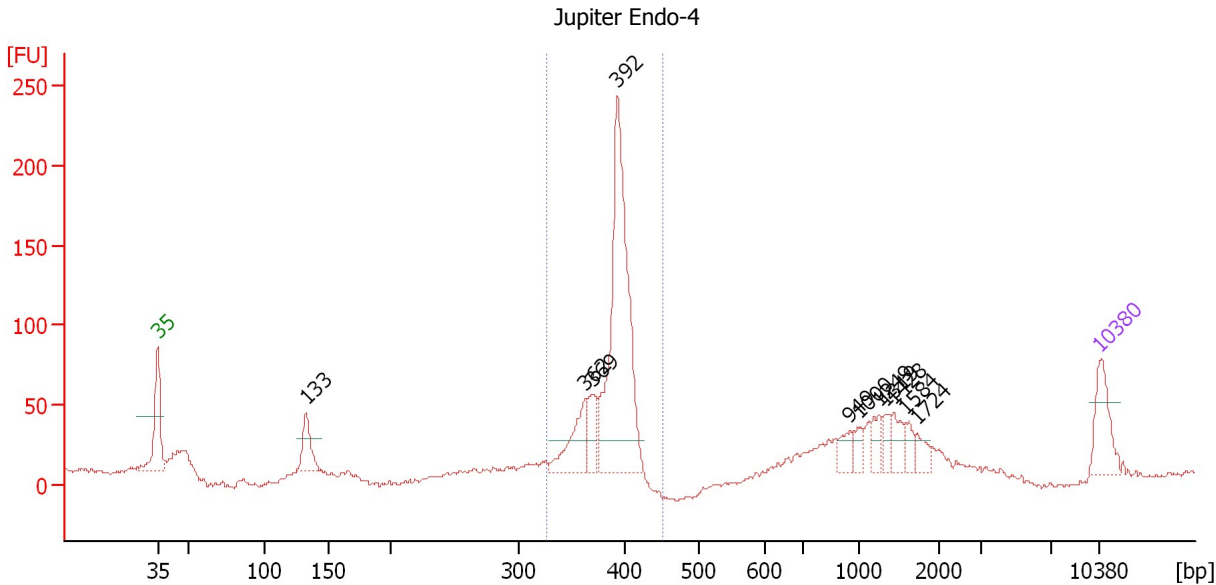
Region table for sample 3 : Jupiter Endo-3

From [bp]	To [bp]	Average Size [bp]	Molarity [pmol/l]	Conc. [pg/μl]	Corr. Area	% of Total	Size distribution in CV [%]	Color
326	456	375	1,885.3	466.66	429.9	31	5.5	Blue

Assay Class: High Sensitivity DNA Assay
 Data Path: C:\...ents and Settings\Bioanalyzer\2013-09-12\2013-09-12_003.xad

Created: 9/12/2013 11:26:15 AM
 Modified: 9/12/2013 12:06:52 PM

Electropherogram Summary Continued ...



Setpoint Deviations for sample 4 : Jupiter Endo-4

Height Threshold [FU] : 20

Overall Results for sample 4 : Jupiter Endo-4

Number of peaks found: 11 Corr. Area 1: 583.7
 Noise: 1.7

Peak table for sample 4 : Jupiter Endo-4

Peak	Size [bp]	Conc. [pg/μl]	Molarity [pmol/l]	Observations
1	35	125.00	5,411.3	Lower Marker
2	133	94.13	1,073.9	
3	362	118.50	495.4	
4	369	67.96	278.8	
5	392	614.72	2,373.2	
6	949	37.64	60.1	
7	1,000	23.44	35.5	
8	1,249	35.04	42.5	
9	1,319	25.18	28.9	
10	1,428	40.31	42.8	
11	1,584	22.54	21.6	
12	1,724	27.73	24.4	
13	10,380	75.00	10.9	Upper Marker

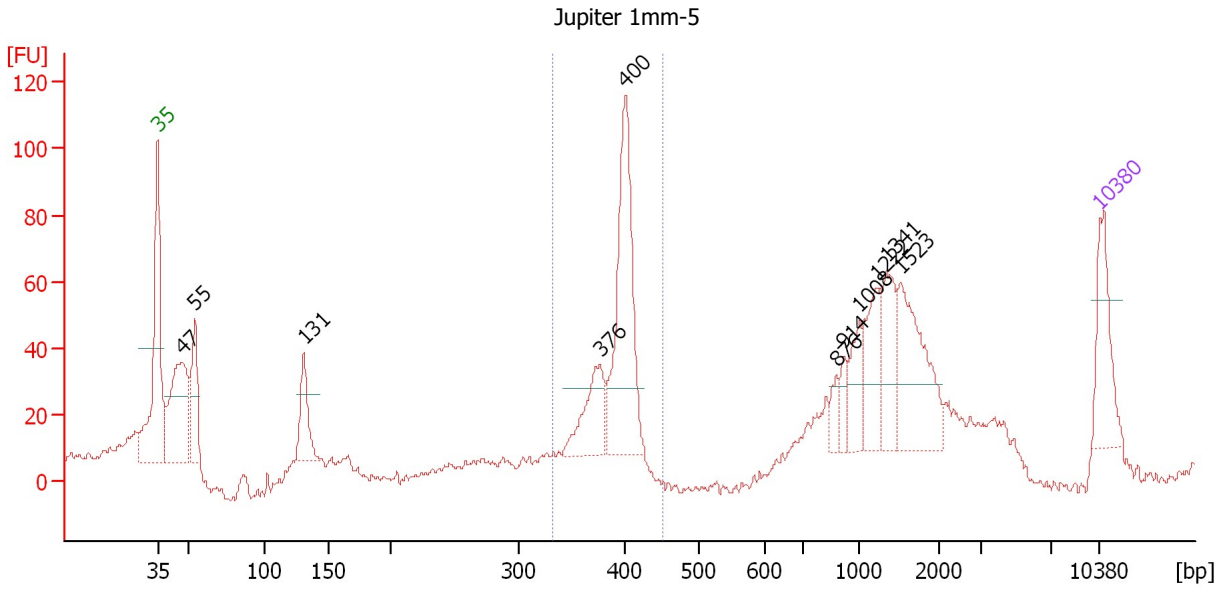
Region table for sample 4 : Jupiter Endo-4

From [bp]	To [bp]	Average Size [bp]	Molarity [pmol/l]	Conc. [pg/μl]	Corr. Area	% of Total	Size distribution in CV [%]	Color
327	451	387	3,155.7	804.53	583.7	58	4.6	Blue

Assay Class: High Sensitivity DNA Assay
 Data Path: C:\...ents and Settings\Bioanalyzer\2013-09-12\2013-09-12_003.xad

Created: 9/12/2013 11:26:15 AM
 Modified: 9/12/2013 12:06:52 PM

Electropherogram Summary Continued ...



Setpoint Deviations for sample 5 : Jupiter 1mm-5

Height Threshold [FU] : 20

Overall Results for sample 5 : Jupiter 1mm-5

Number of peaks found: 11 Corr. Area 1: 254.9
 Noise: 1.5

Peak table for sample 5 : Jupiter 1mm-5

Peak	Size [bp]	Conc. [pg/μl]	Molarity [pmol/l]	Observations
1	35	125.00	5,411.3	Lower Marker
2	47	229.44	7,416.2	
3	55	102.74	2,851.0	
4	131	80.42	929.0	
5	376	96.23	387.6	
6	400	271.96	1,031.1	
7	876	21.33	36.9	
8	914	22.12	36.7	
9	1,008	47.24	71.0	
10	1,222	78.84	97.7	
11	1,341	74.01	83.6	
12	1,523	135.77	135.1	
13	10,380	75.00	10.9	Upper Marker

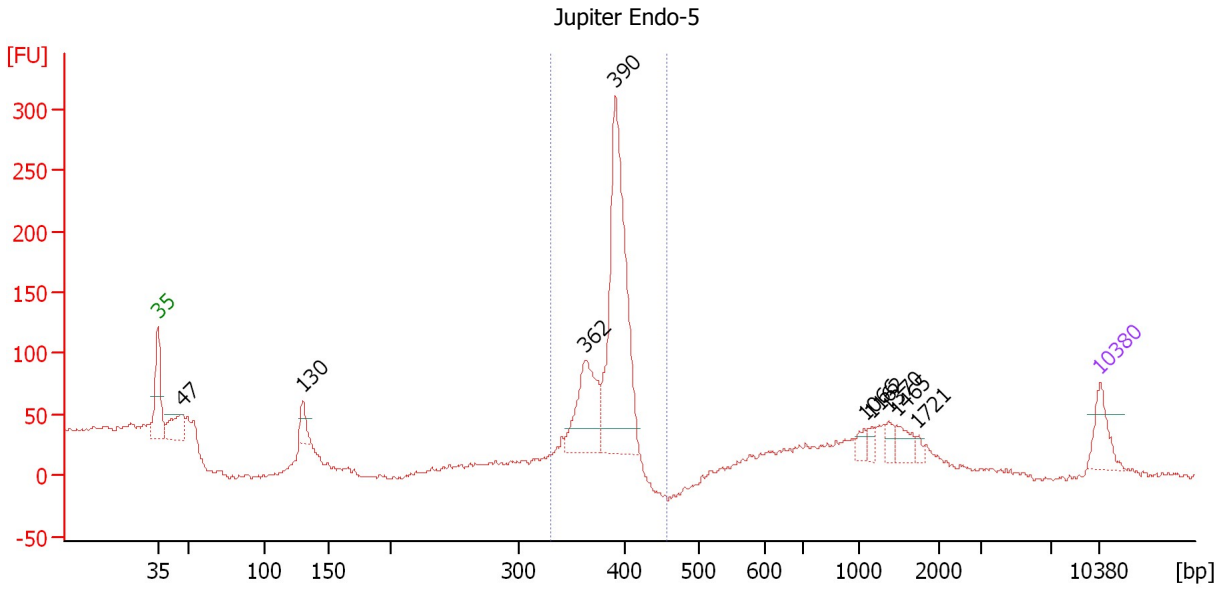
Region table for sample 5 : Jupiter 1mm-5

From [bp]	To [bp]	Average Size [bp]	Molarity [pmol/l]	Conc. [pg/μl]	Corr. Area	% of Total	Size distribution in CV [%]	Color
333	451	391	1,467.1	378.57	254.9	27	4.2	Blue

Assay Class: High Sensitivity DNA Assay
 Data Path: C:\...ents and Settings\Bioanalyzer\2013-09-12\2013-09-12_003.xad

Created: 9/12/2013 11:26:15 AM
 Modified: 9/12/2013 12:06:52 PM

Electropherogram Summary Continued ...



Setpoint Deviations for sample 6 : Jupiter Endo-5

Height Threshold [FU] : 20

Overall Results for sample 6 : Jupiter Endo-5

Number of peaks found: 9 Corr. Area 1: 691.4
 Noise: 2.1

Peak table for sample 6 : Jupiter Endo-5

Peak	Size [bp]	Conc. [pg/µl]	Molarity [pmol/l]	Observations
1	35	125.00	5,411.3	Lower Marker
2	47	126.33	4,073.0	
3	130	65.61	762.8	
4	362	270.68	1,133.0	
5	390	780.92	3,030.5	
6	1,066	27.36	38.9	
7	1,162	21.53	28.1	
8	1,370	28.59	31.6	
9	1,465	47.17	48.8	
10	1,721	13.42	11.8	
11	10,380	75.00	10.9	Upper Marker

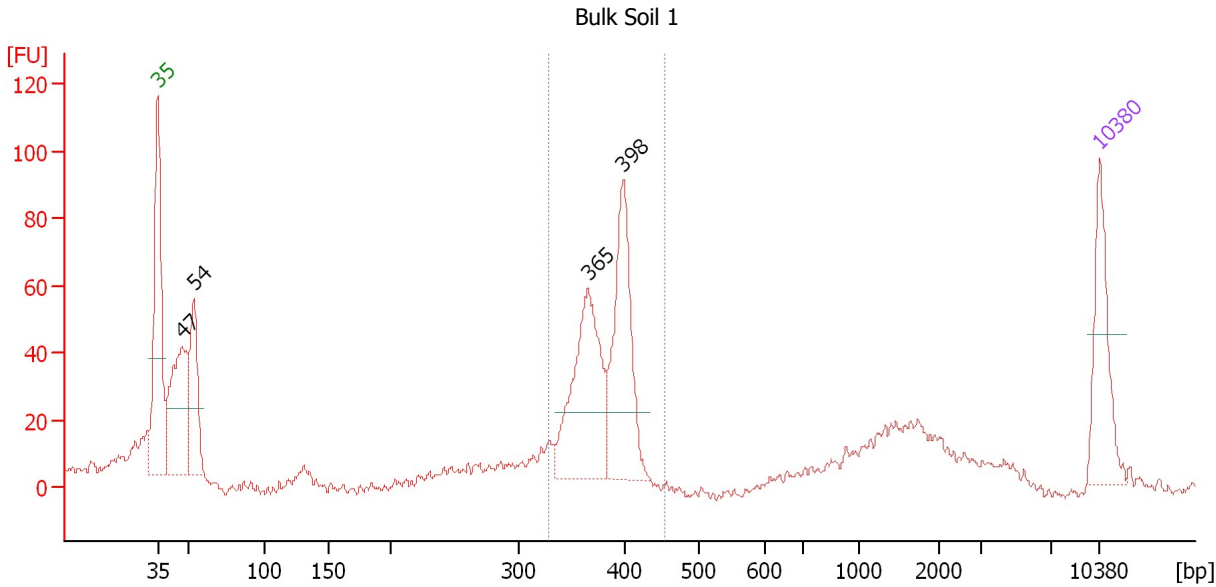
Region table for sample 6 : Jupiter Endo-5

From [bp]	To [bp]	Average Size [bp]	Molarity [pmol/l]	Conc. [pg/µl]	Corr. Area	% of Total	Size distribution in CV [%]	Color
331	455	386	4,013.1	1,021.52	691.4	65	4.0	Blue

Assay Class: High Sensitivity DNA Assay
 Data Path: C:\...ents and Settings\Bioanalyzer\2013-09-12\2013-09-12_003.xad

Created: 9/12/2013 11:26:15 AM
 Modified: 9/12/2013 12:06:52 PM

Electropherogram Summary Continued ...



Setpoint Deviations for sample 7 : Bulk Soil 1

Height Threshold [FU] : 20

Overall Results for sample 7 : Bulk Soil 1

Number of peaks found: 4 Corr. Area 1: 353.7
 Noise: 1.3

Peak table for sample 7 : Bulk Soil 1

Peak	Size [bp]	Conc. [pg/μl]	Molarity [pmol/l]	Observations
1	35	125.00	5,411.3	Lower Marker
2	47	192.51	6,225.9	
3	54	118.49	3,329.1	
4	365	202.61	840.4	
5	398	180.72	688.4	
6	10,380	75.00	10.9	Upper Marker

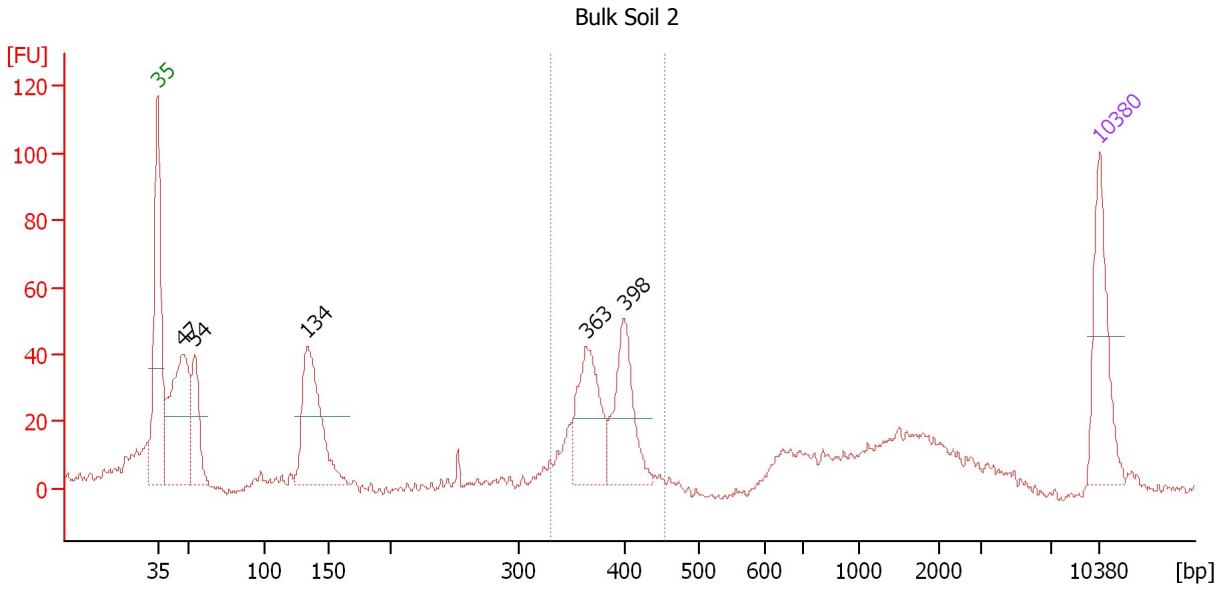
Region table for sample 7 : Bulk Soil 1

From [bp]	To [bp]	Average Size [bp]	Molarity [pmol/l]	Conc. [pg/μl]	Corr. Area	% of Total	Size distribution in CV [%]	Color
328	454	379	1,557.6	388.93	353.7	44	5.7	Blue

Assay Class: High Sensitivity DNA Assay
 Data Path: C:\...ents and Settings\Bioanalyzer\2013-09-12\2013-09-12_003.xad

Created: 9/12/2013 11:26:15 AM
 Modified: 9/12/2013 12:06:52 PM

Electropherogram Summary Continued ...



Setpoint Deviations for sample 8 : Bulk Soil 2

Height Threshold [FU] : 20

Overall Results for sample 8 : Bulk Soil 2

Number of peaks found: 5 Corr. Area 1: 233.7
 Noise: 1.1

Peak table for sample 8 : Bulk Soil 2

Peak	Size [bp]	Conc. [pg/μl]	Molarity [pmol/l]	Observations
1	35	125.00	5,411.3	Lower Marker
2	47	208.82	6,746.5	
3	54	84.16	2,341.4	
4	134	174.60	1,975.1	
5	363	114.90	479.2	
6	398	104.15	396.1	
7	10,380	75.00	10.9	Upper Marker

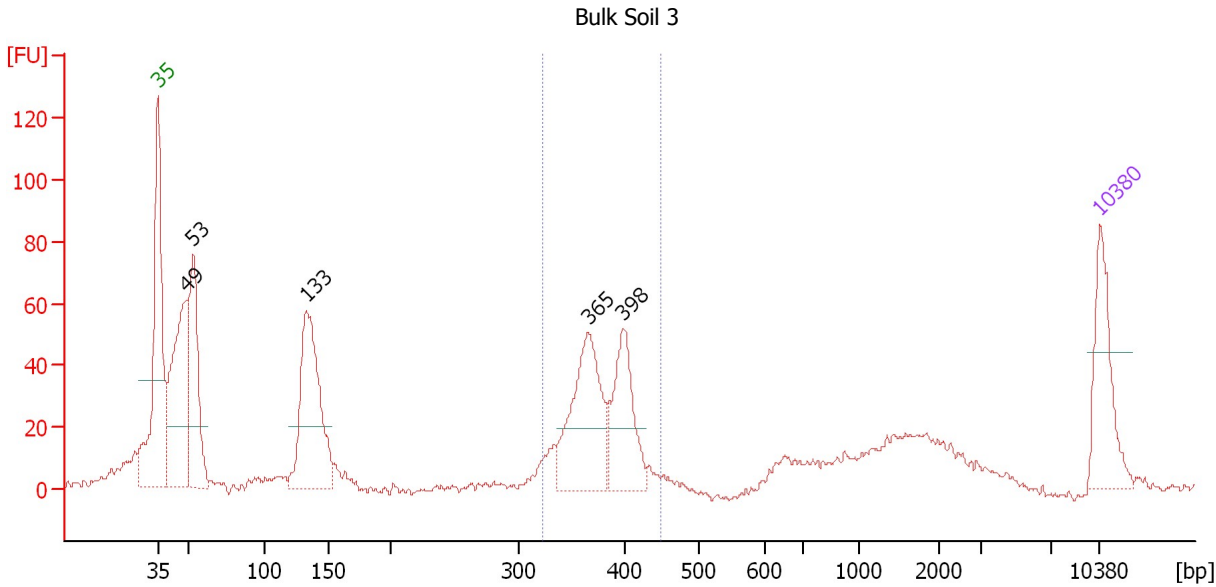
Region table for sample 8 : Bulk Soil 2

From [bp]	To [bp]	Average Size [bp]	Molarity [pmol/l]	Conc. [pg/μl]	Corr. Area	% of Total	Size distribution in CV [%]	Color
330	453	380	973.9	243.34	233.7	29	6.1	Blue

Assay Class: High Sensitivity DNA Assay
 Data Path: C:\...ents and Settings\Bioanalyzer\2013-09-12\2013-09-12_003.xad

Created: 9/12/2013 11:26:15 AM
 Modified: 9/12/2013 12:06:52 PM

Electropherogram Summary Continued ...



Setpoint Deviations for sample 9 : Bulk Soil 3

Height Threshold [FU] : 20

Overall Results for sample 9 : Bulk Soil 3

Number of peaks found: 5 Corr. Area 1: 300.1
 Noise: 1.3

Peak table for sample 9 : Bulk Soil 3

Peak	Size [bp]	Conc. [pg/μl]	Molarity [pmol/l]	Observations
1	35	125.00	5,411.3	Lower Marker
2	49	260.24	8,059.5	
3	53	195.75	5,561.7	
4	133	258.36	2,938.2	
5	365	176.71	733.8	
6	398	117.97	449.4	
7	10,380	75.00	10.9	Upper Marker

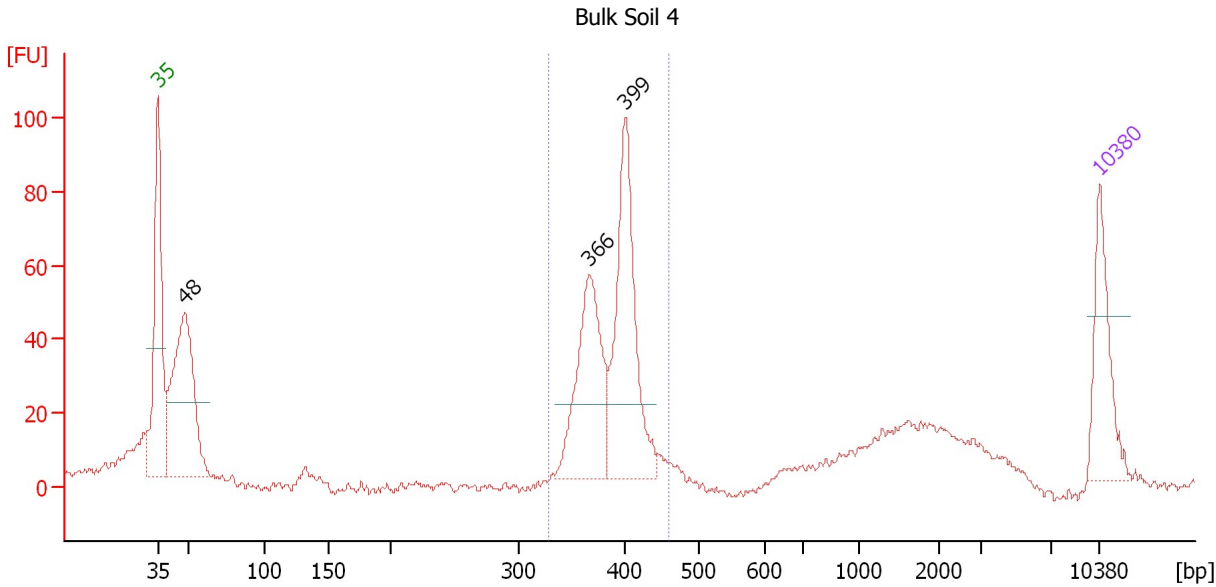
Region table for sample 9 : Bulk Soil 3

From [bp]	To [bp]	Average Size [bp]	Molarity [pmol/l]	Conc. [pg/μl]	Corr. Area	% of Total	Size distribution in CV [%]	Color
324	449	376	1,270.6	314.78	300.1	28	6.6	Blue

Assay Class: High Sensitivity DNA Assay
 Data Path: C:\...ents and Settings\Bioanalyzer\2013-09-12\2013-09-12_003.xad

Created: 9/12/2013 11:26:15 AM
 Modified: 9/12/2013 12:06:52 PM

Electropherogram Summary Continued ...



Setpoint Deviations for sample 10 : Bulk Soil 4

Height Threshold [FU] : 20

Overall Results for sample 10 : Bulk Soil 4

Number of peaks found: 3 Corr. Area 1: 367.3
 Noise: 1.3

Peak table for sample 10 : Bulk Soil 4

Peak	Size [bp]	Conc. [pg/μl]	Molarity [pmol/l]	Observations
1	35	125.00	5,411.3	Lower Marker
2	48	314.74	9,851.5	
3	366	192.13	796.0	
4	399	245.65	931.7	
5	10,380	75.00	10.9	Upper Marker

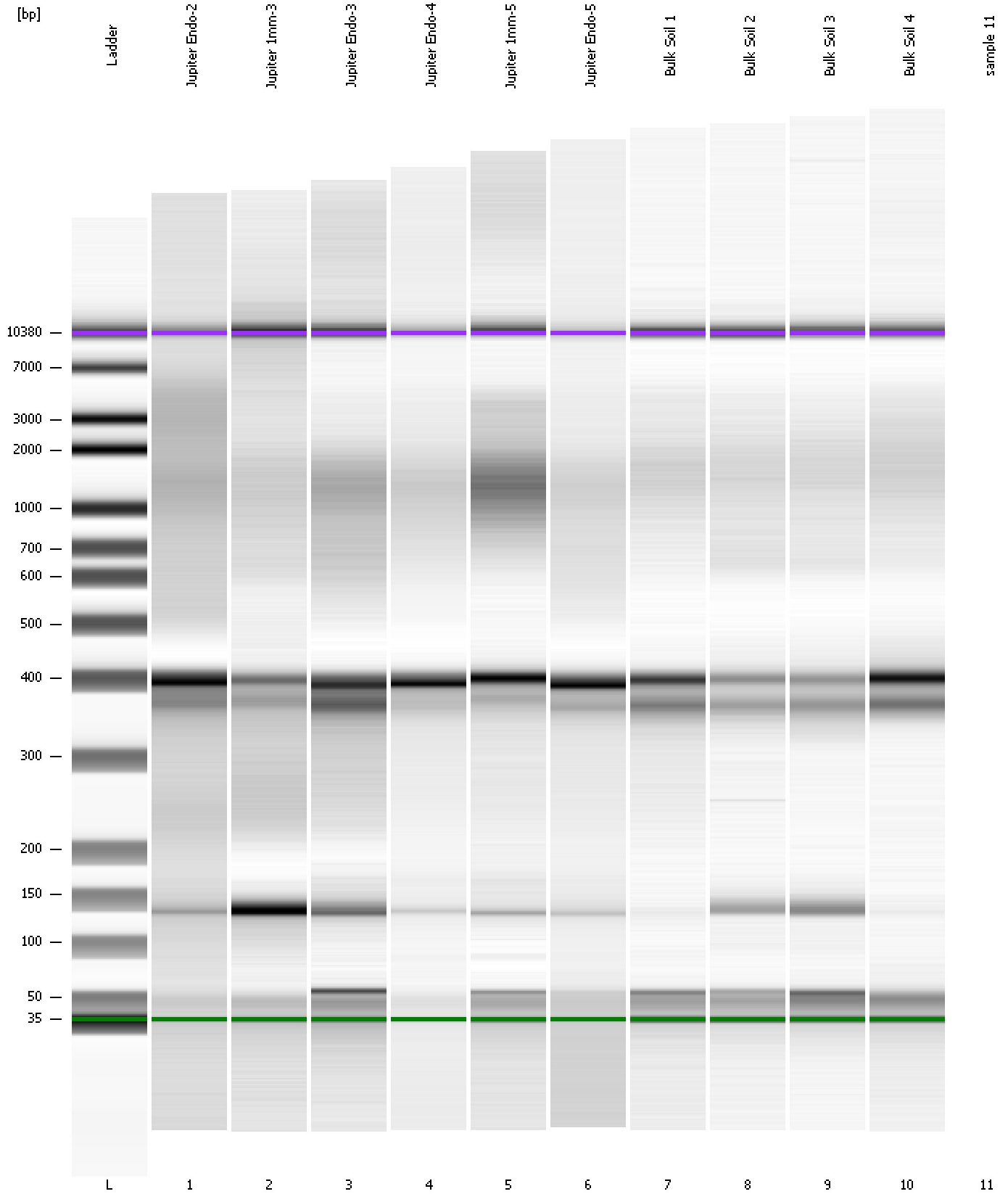
Region table for sample 10 : Bulk Soil 4

From [bp]	To [bp]	Average Size [bp]	Molarity [pmol/l]	Conc. [pg/μl]	Corr. Area	% of Total	Size distribution in CV [%]	Color
328	458	388	1,737.5	443.61	367.3	47	6.0	Blue

Assay Class: High Sensitivity DNA Assay
Data Path: C:\...ents and Settings\Bioanalyzer\2013-09-12\2013-09-12_003.xad

Created: 9/12/2013 11:26:15 AM
Modified: 9/12/2013 12:06:52 PM

Gel Image



Assay Class: High Sensitivity DNA Assay
Data Path: C:\...ents and Settings\Bioanalyzer\2013-09-12\2013-09-12_003.xad

Created: 9/12/2013 11:26:15 AM
Modified: 9/12/2013 12:06:52 PM

Invalid Samples

Sample 11 has not been run, no results available.