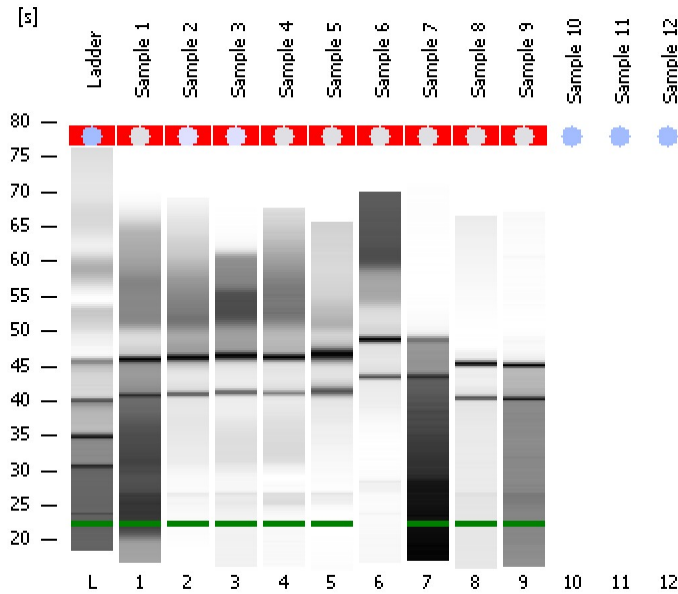


Assay Class: Eukaryote Total RNA Nano  
Data Path: C:\...ents and Settings\Bioanalyzer\2013-09-12\2013-09-12\_001.xad

Created: 9/12/2013 9:53:28 AM  
Modified: 9/12/2013 10:13:10 AM

### Electrophoresis File Run Summary



#### Instrument Information:

Instrument Name: DE13701086      Firmware: C.01.069  
Serial#: DE13701086      Type: G2938B

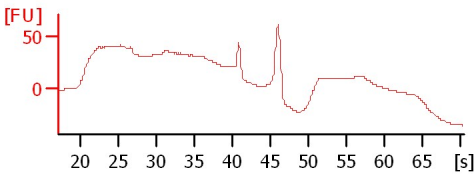
#### Assay Information:

Assay Origin Path: C:\Program Files\Agilent\2100 bioanalyzer\2100 expert\assays\RNA\Eukaryote Total RNA Nano Series II.xsy  
Assay Class: Eukaryote Total RNA Nano  
Version: 2.6  
Assay Comments: Total RNA Analysis ng sensitivity (Eukaryote)  
© Copyright 2003 - 2009 Agilent Technologies, Inc.

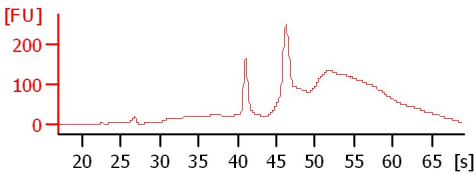
#### Chip Information:

Chip Lot #:   
Reagent Kit Lot #:   
Chip Comments:

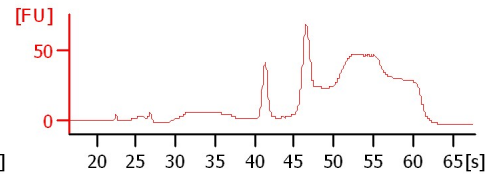
**Sample 1**  
RIN N/A



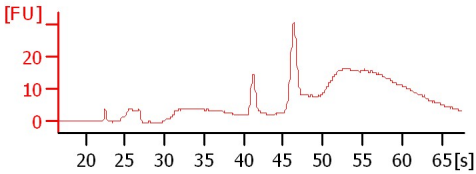
**Sample 2**  
RIN: 7.90



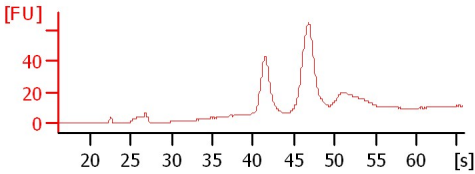
**Sample 3**  
RIN: 7.80



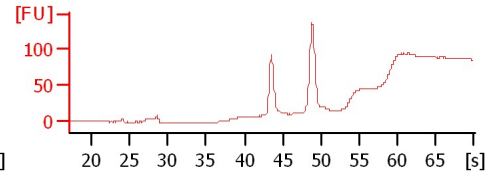
**Sample 4**  
RIN N/A



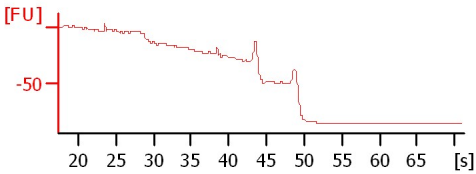
**Sample 5**  
RIN N/A



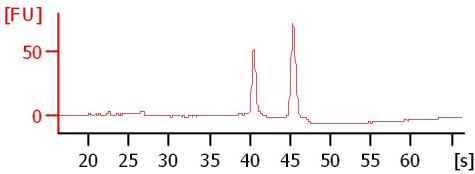
**Sample 6**  
RIN N/A



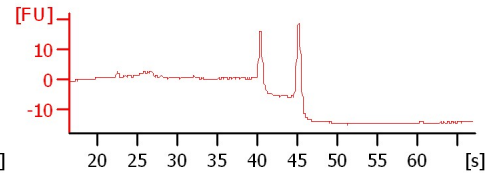
**Sample 7**  
RIN N/A



**Sample 8**  
RIN N/A



**Sample 9**  
RIN N/A



Assay Class: Eukaryote Total RNA Nano  
Data Path: C:\...ents and Settings\Bioanalyzer\2013-09-12\2013-09-12\_001.xad

Created: 9/12/2013 9:53:28 AM  
Modified: 9/12/2013 10:13:10 AM

**Electrophoresis File Run Summary (Chip Summary)**

Sample Name	Sample Comment	Status	Result Label	Result Color
Sample 1		✓	RIN N/A	
Sample 2		✓	RIN: 7.90	
Sample 3		✓	RIN: 7.80	
Sample 4		✓	RIN N/A	
Sample 5		✓	RIN N/A	
Sample 6		✓	RIN N/A	
Sample 7		✓	RIN N/A	
Sample 8		✓	RIN N/A	
Sample 9		✓	RIN N/A	
Sample 10				
Sample 11				
Sample 12				
Ladder		✓	All Other Samples	

**Chip Lot #**

**Reagent Kit Lot #**

**Chip Comments :**

Assay Class: Eukaryote Total RNA Nano  
Data Path: C:\...ents and Settings\Bioanalyzer\2013-09-12\2013-09-12\_001.xad

Created: 9/12/2013 9:53:28 AM  
Modified: 9/12/2013 10:13:10 AM

**Electrophoresis Assay Details**

**General Analysis Settings**

Number of Available Sample and Ladder Wells (Max.) : 13  
Minimum Visible Range [s] : 17  
Maximum Visible Range [s] : 70  
Start Analysis Time Range [s] : 19  
End Analysis Time Range [s] : 69  
Ladder Concentration [ng/μl] : 150  
Lower Marker Concentration [ng/μl] : 0  
Upper Marker Concentration [ng/μl] : 0  
Used Lower Marker for Quantitation  
Standard Curve Fit is Logarithmic  
Show Data Aligned to Lower Marker

**Integrator Settings**

Integration Start Time [s] : 19  
Integration End Time [s] : 69  
Slope Threshold : 0.6  
Height Threshold [FU] : 0.5  
Area Threshold : 0.2  
Width Threshold [s] : 0.5  
Baseline Plateau [s] : 6

**Filter Settings**

Filter Width [s] : 0.5  
Polynomial Order : 4

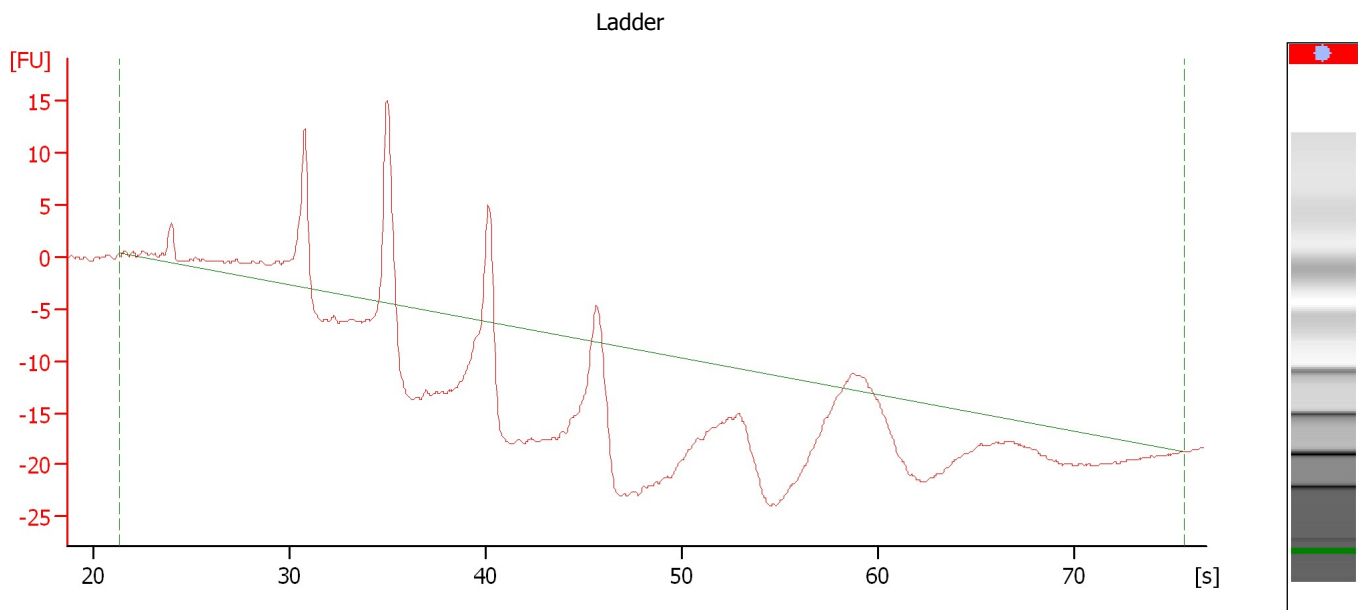
**Ladder**

Ladder Peak	Size
1	25
2	200
3	500
4	1000
5	2000
6	4000

Assay Class: Eukaryote Total RNA Nano  
Data Path: C:\...ents and Settings\Bioanalyzer\2013-09-12\2013-09-12\_001.xad

Created: 9/12/2013 9:53:28 AM  
Modified: 9/12/2013 10:13:10 AM

**Electropherogram Summary**



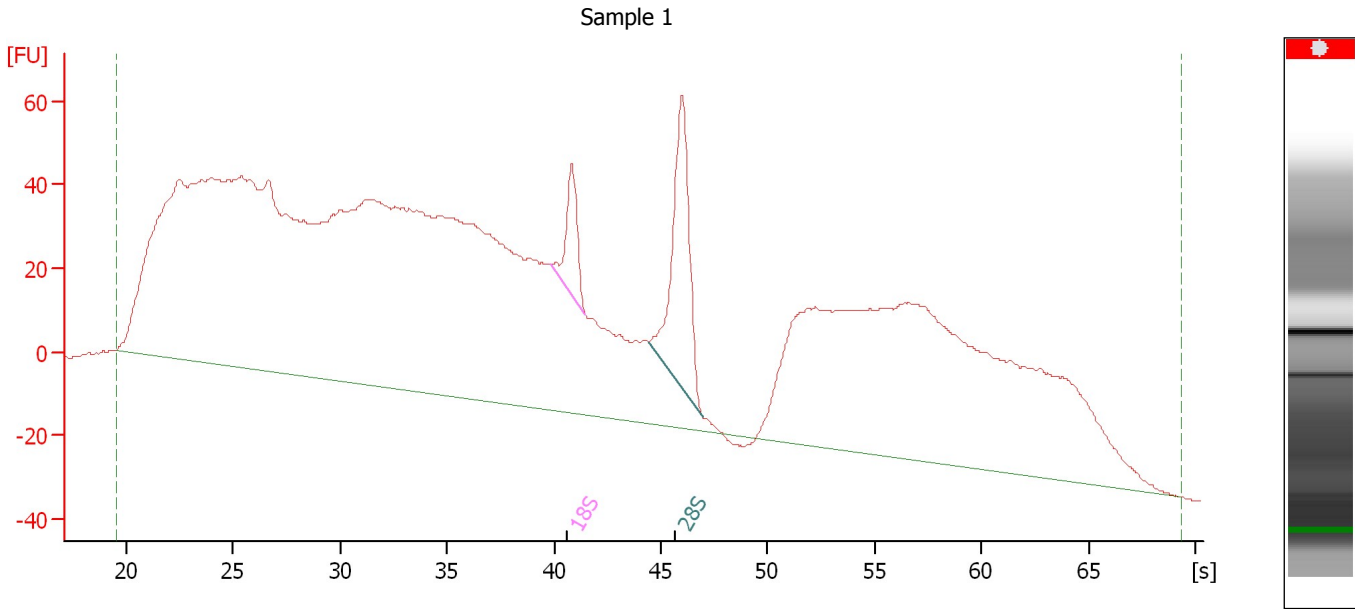
**Overall Results for Ladder**

RNA Area:	98.7	Result Flagging Color:	<span style="background-color: #add8e6; border: 1px solid black; display: inline-block; width: 20px; height: 10px;"></span>
RNA Concentration:	150 ng/ $\mu$ l	Result Flagging Label:	All Other Samples

Assay Class: Eukaryote Total RNA Nano  
Data Path: C:\...ents and Settings\Bioanalyzer\2013-09-12\2013-09-12\_001.xad

Created: 9/12/2013 9:53:28 AM  
Modified: 9/12/2013 10:13:10 AM

**Electropherogram Summary Continued ...**



**Overall Results for sample 1 : Sample 1**

RNA Area:	3,620.5	RNA Integrity Number (RIN):	N/A (B.02.08)
RNA Concentration:	5,501 ng/μl	Result Flagging Color:	
rRNA Ratio [28s / 18s]:	3.0	Result Flagging Label:	RIN N/A

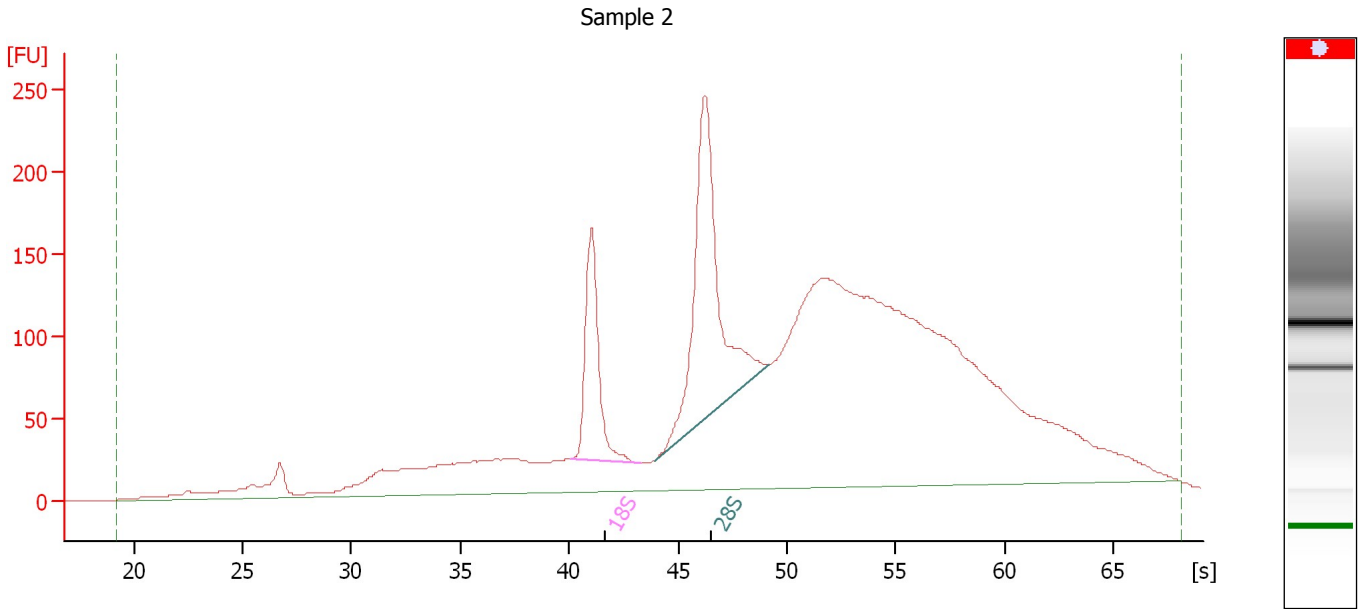
**Fragment table for sample 1 : Sample 1**

Name	Start Size [nt]	End Size [nt]	Area	% of total Area
18S	0	0	44.4	1.2
28S	0	0	135.2	3.7

Assay Class: Eukaryote Total RNA Nano  
 Data Path: C:\...ents and Settings\Bioanalyzer\2013-09-12\2013-09-12\_001.xad

Created: 9/12/2013 9:53:28 AM  
 Modified: 9/12/2013 10:13:10 AM

**Electropherogram Summary Continued ...**



**Overall Results for sample 2 : Sample 2**

RNA Area:	4,357.7	RNA Integrity Number (RIN):	7.9 (B.02.08)
RNA Concentration:	6,622 ng/μl	Result Flagging Color:	<span style="background-color: #ccccff; border: 1px solid black; display: inline-block; width: 20px; height: 10px;"></span>
rRNA Ratio [28s / 18s]:	2.2	Result Flagging Label:	RIN: 7.90

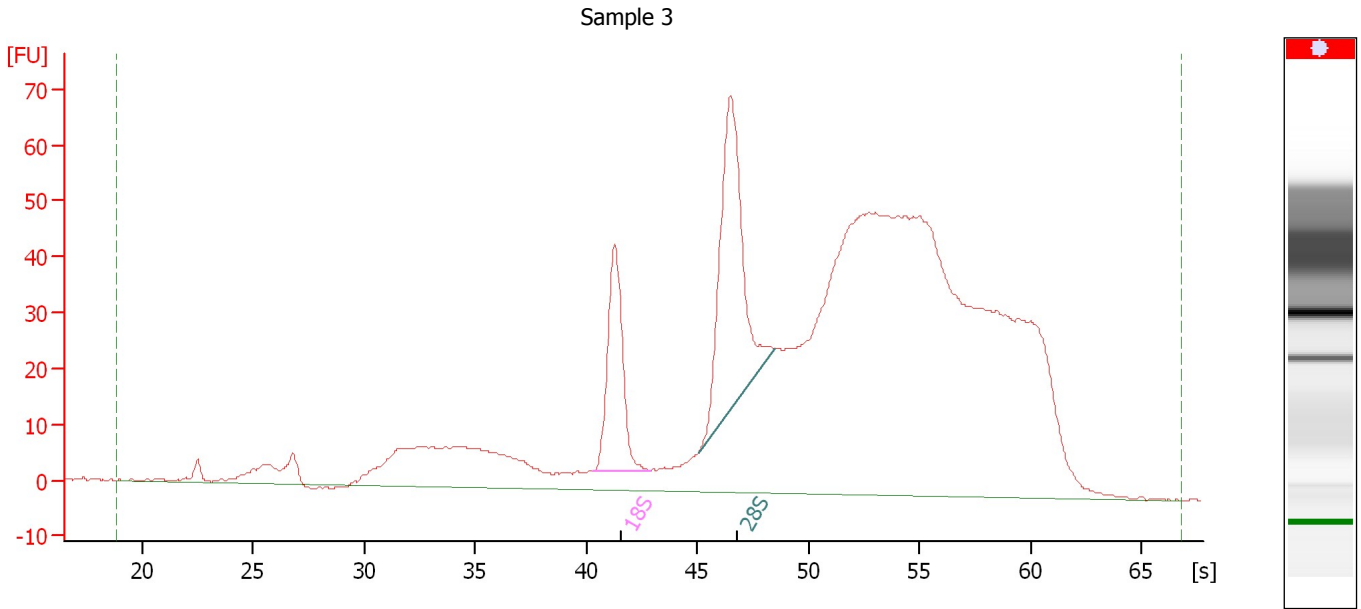
**Fragment table for sample 2 : Sample 2**

Name	Start Size [nt]	End Size [nt]	Area	% of total Area
18S	0	0	237.8	5.5
28S	0	0	525.1	12.0

Assay Class: Eukaryote Total RNA Nano  
Data Path: C:\...ents and Settings\Bioanalyzer\2013-09-12\2013-09-12\_001.xad

Created: 9/12/2013 9:53:28 AM  
Modified: 9/12/2013 10:13:10 AM

**Electropherogram Summary Continued ...**



**Overall Results for sample 3 : Sample 3**

RNA Area: 1,457.9                      RNA Integrity Number (RIN): 7.8 (B.02.08)  
RNA Concentration: 2,215 ng/μl                      Result Flagging Color:   
rRNA Ratio [28s / 18s]: 1.8                      Result Flagging Label: RIN: 7.80

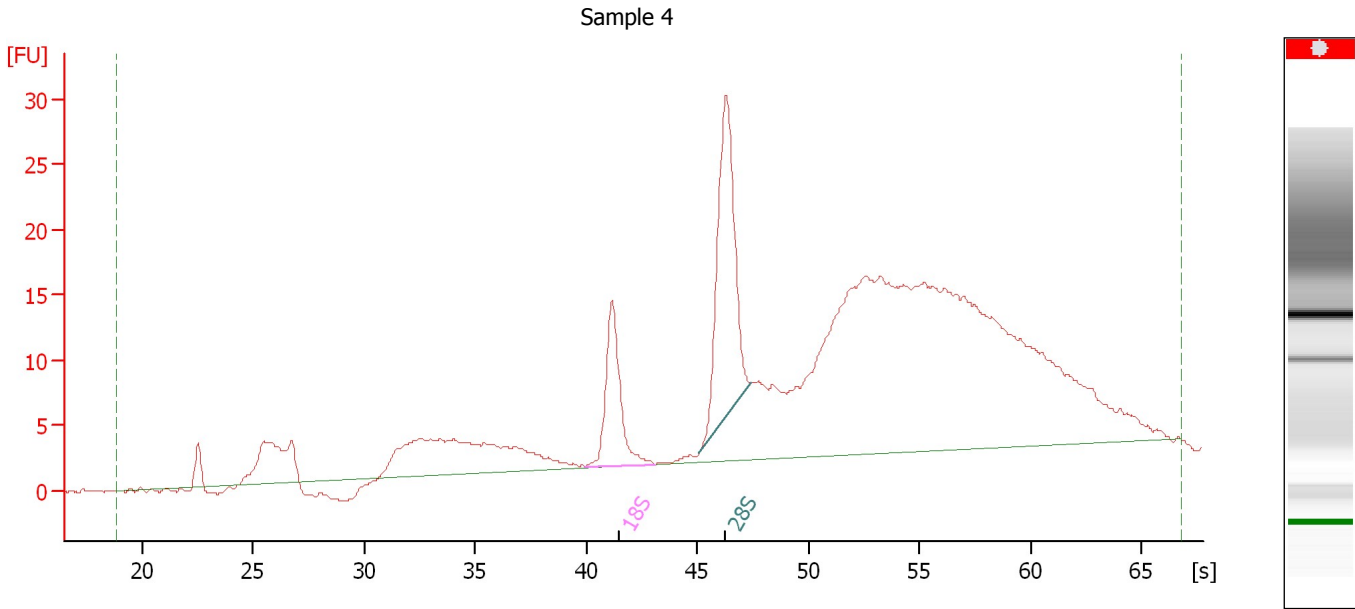
**Fragment table for sample 3 : Sample 3**

Name	Start Size [nt]	End Size [nt]	Area	% of total Area
18S	0	0	76.6	5.3
28S	0	0	138.6	9.5

Assay Class: Eukaryote Total RNA Nano  
 Data Path: C:\...ents and Settings\Bioanalyzer\2013-09-12\2013-09-12\_001.xad

Created: 9/12/2013 9:53:28 AM  
 Modified: 9/12/2013 10:13:10 AM

**Electropherogram Summary Continued ...**



**Overall Results for sample 4 : Sample 4**

RNA Area:	424.7	RNA Integrity Number (RIN):	N/A (B.02.08)
RNA Concentration:	645 ng/μl	Result Flagging Color:	<span style="background-color: #cccccc; border: 1px solid black; display: inline-block; width: 20px; height: 10px;"></span>
rRNA Ratio [28s / 18s]:	2.0	Result Flagging Label:	RIN N/A

**Fragment table for sample 4 : Sample 4**

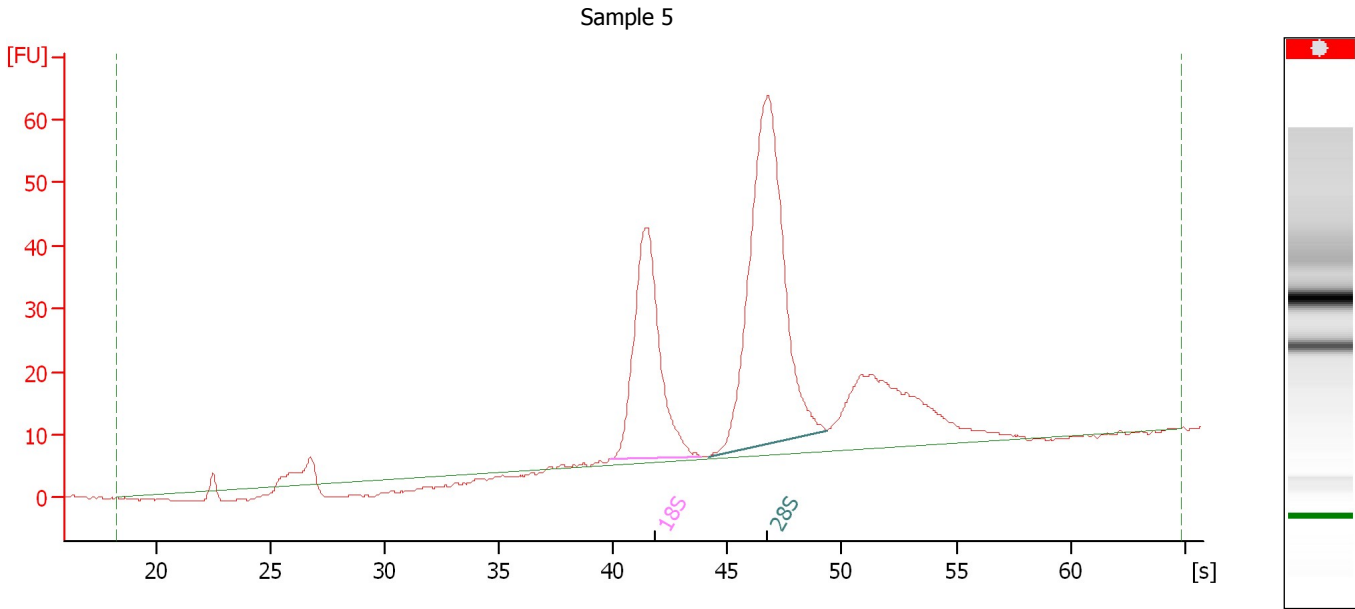
Name	Start Size [nt]	End Size [nt]	Area	% of total Area
18S	0	0	23.1	5.4
28S	0	0	47.4	11.2



Assay Class: Eukaryote Total RNA Nano  
 Data Path: C:\...ents and Settings\Bioanalyzer\2013-09-12\2013-09-12\_001.xad

Created: 9/12/2013 9:53:28 AM  
 Modified: 9/12/2013 10:13:10 AM

**Electropherogram Summary Continued ...**



**Overall Results for sample 5 : Sample 5**

RNA Area:	457.8	RNA Integrity Number (RIN):	N/A (B.02.08)
RNA Concentration:	696 ng/μl	Result Flagging Color:	<span style="background-color: #cccccc; border: 1px solid black; display: inline-block; width: 20px; height: 10px;"></span>
rRNA Ratio [28s / 18s]:	1.8	Result Flagging Label:	RIN N/A

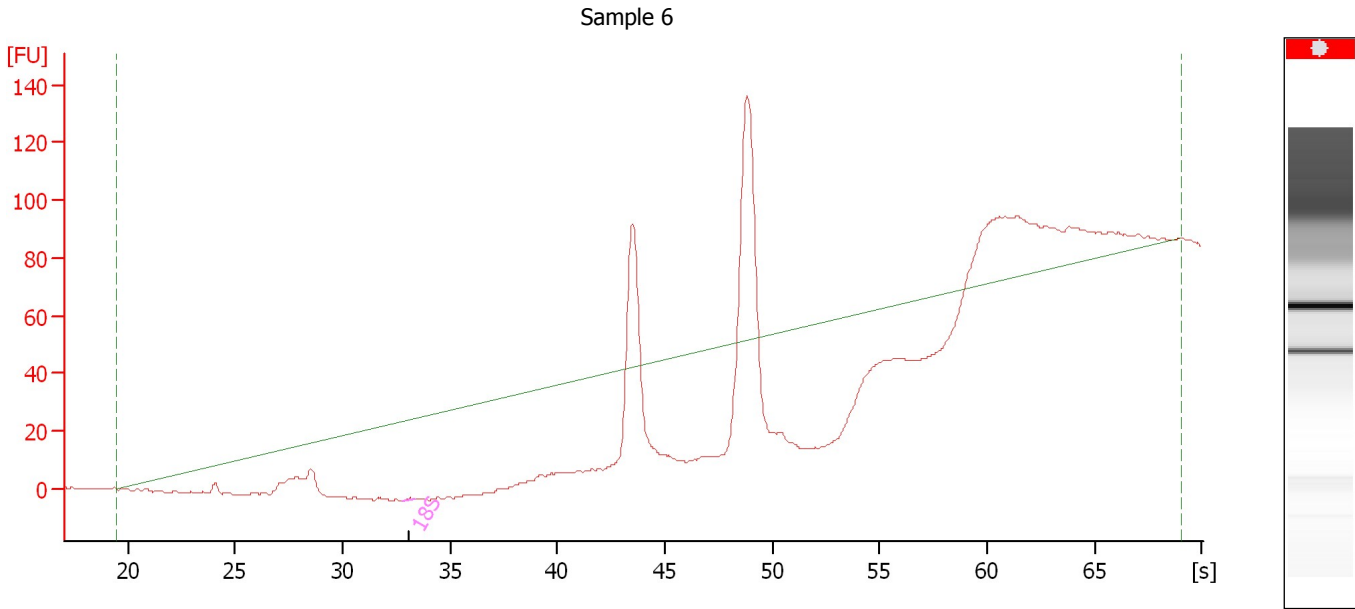
**Fragment table for sample 5 : Sample 5**

Name	Start Size [nt]	End Size [nt]	Area	% of total Area
18S	0	0	114.6	25.0
28S	0	0	203.7	44.5

Assay Class: Eukaryote Total RNA Nano  
Data Path: C:\...ents and Settings\Bioanalyzer\2013-09-12\2013-09-12\_001.xad

Created: 9/12/2013 9:53:28 AM  
Modified: 9/12/2013 10:13:10 AM

**Electropherogram Summary Continued ...**



**Overall Results for sample 6 : Sample 6**

RNA Area:	335.3	RNA Integrity Number (RIN):	N/A (B.02.08)
RNA Concentration:	509 ng/μl	Result Flagging Color:	<span style="background-color: #cccccc; border: 1px solid black; display: inline-block; width: 20px; height: 10px;"></span>
rRNA Ratio [28s / 18s]:	0.0	Result Flagging Label:	RIN N/A

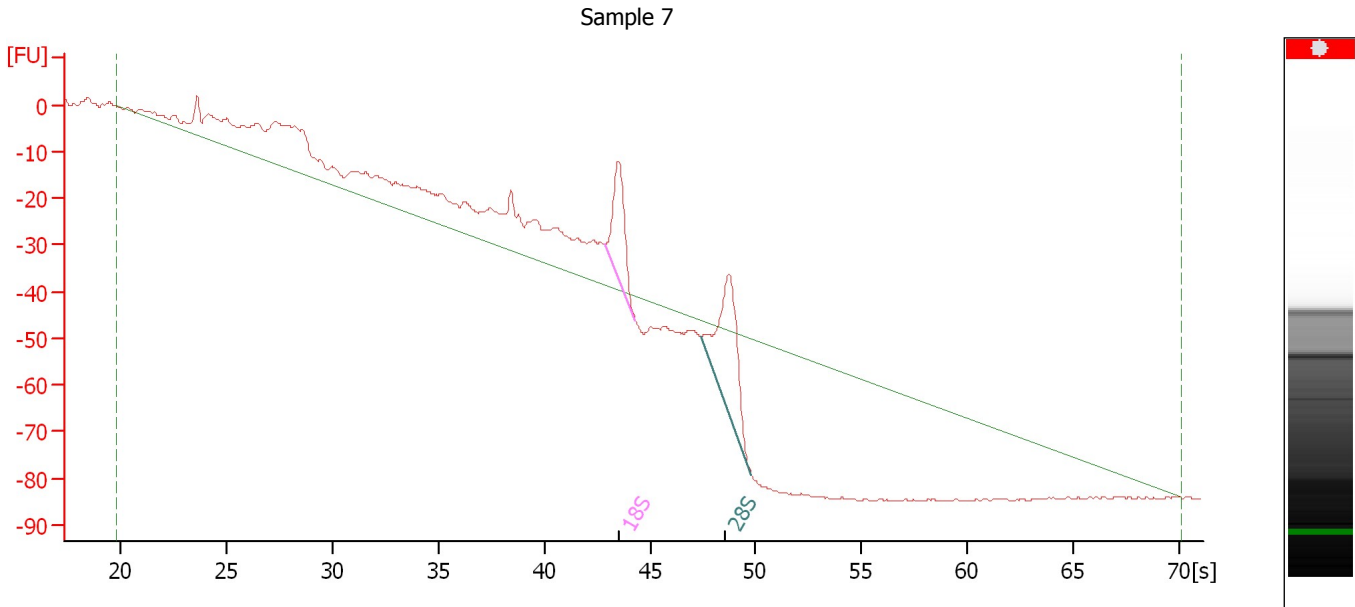
**Fragment table for sample 6 : Sample 6**

Name	Start Size [nt]	End Size [nt]	Area	% of total Area
18S	0	0	0.6	0.2

Assay Class: Eukaryote Total RNA Nano  
Data Path: C:\...ents and Settings\Bioanalyzer\2013-09-12\2013-09-12\_001.xad

Created: 9/12/2013 9:53:28 AM  
Modified: 9/12/2013 10:13:10 AM

**Electropherogram Summary Continued ...**



**Overall Results for sample 7 : Sample 7**

RNA Area:	452.8	RNA Integrity Number (RIN):	N/A (B.02.08)
RNA Concentration:	688 ng/μl	Result Flagging Color:	<span style="background-color: #cccccc; border: 1px solid black; display: inline-block; width: 20px; height: 10px;"></span>
rRNA Ratio [28s / 18s]:	1.7	Result Flagging Label:	RIN N/A

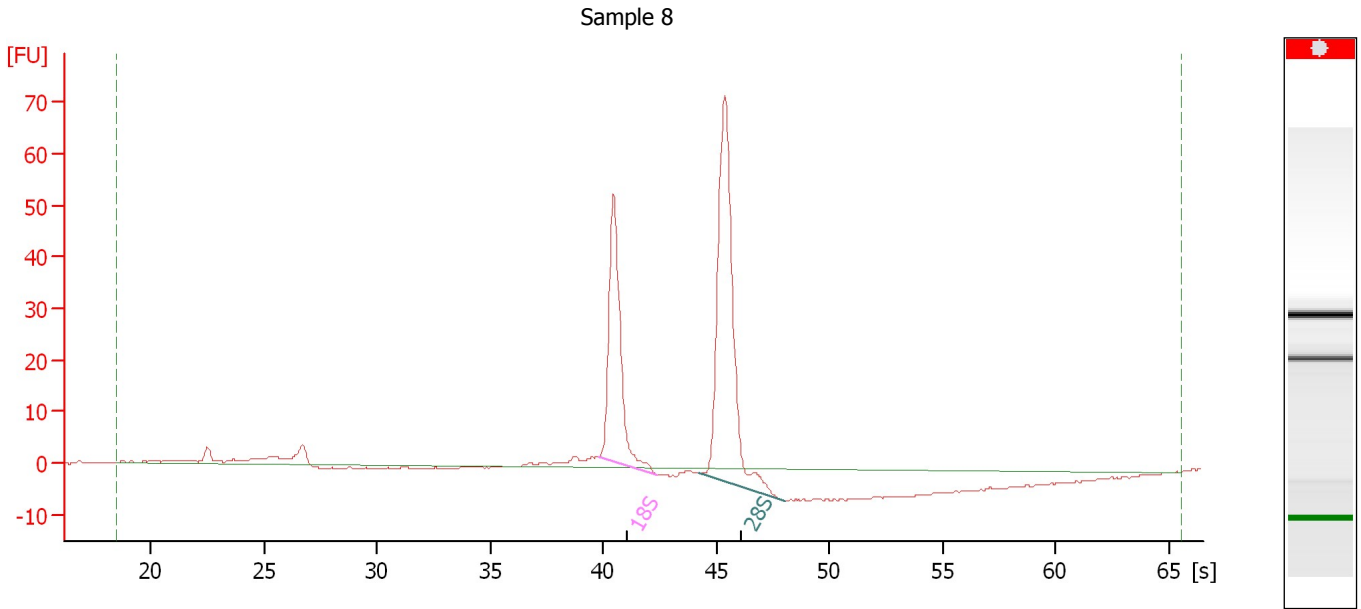
**Fragment table for sample 7 : Sample 7**

Name	Start Size [nt]	End Size [nt]	Area	% of total Area
18S	0	0	35.7	7.9
28S	0	0	62.1	13.7

Assay Class: Eukaryote Total RNA Nano  
 Data Path: C:\...ents and Settings\Bioanalyzer\2013-09-12\2013-09-12\_001.xad

Created: 9/12/2013 9:53:28 AM  
 Modified: 9/12/2013 10:13:10 AM

**Electropherogram Summary Continued ...**



**Overall Results for sample 8 : Sample 8**

RNA Area:	225.8	RNA Integrity Number (RIN):	N/A (B.02.08)
RNA Concentration:	343 ng/μl	Result Flagging Color:	<span style="background-color: #cccccc; border: 1px solid black; display: inline-block; width: 20px; height: 10px;"></span>
rRNA Ratio [28s / 18s]:	1.7	Result Flagging Label:	RIN N/A

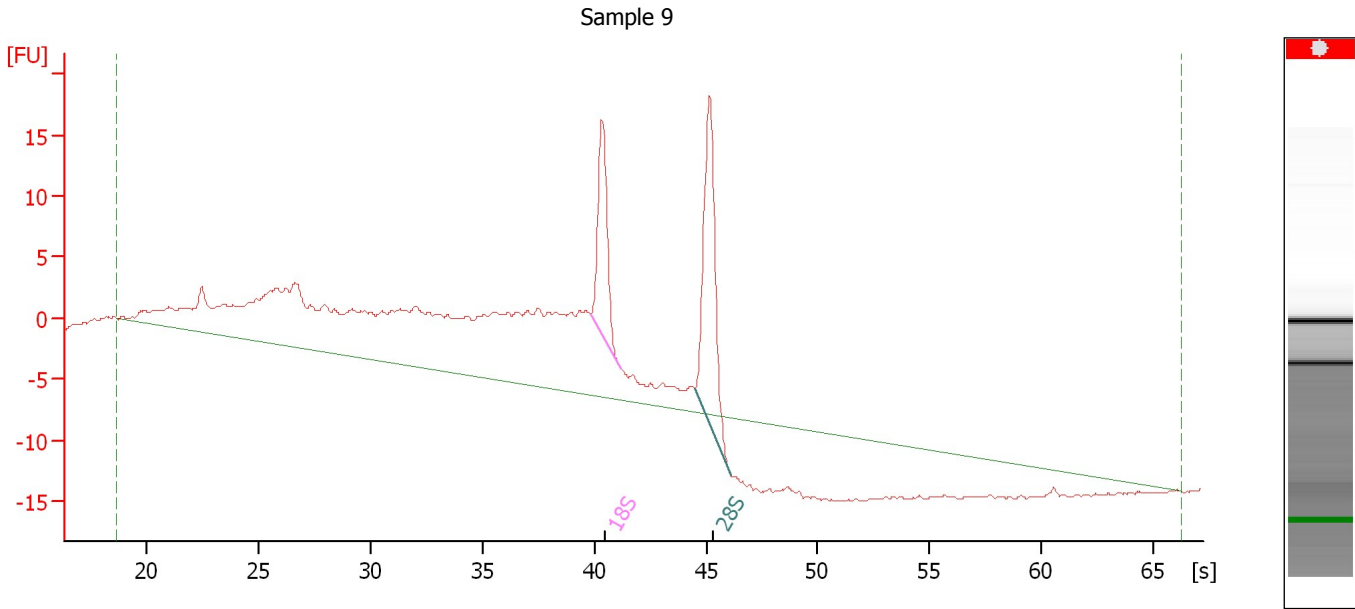
**Fragment table for sample 8 : Sample 8**

Name	Start Size [nt]	End Size [nt]	Area	% of total Area
18S	0	0	76.0	33.7
28S	0	0	126.7	56.1

Assay Class: Eukaryote Total RNA Nano  
 Data Path: C:\...ents and Settings\Bioanalyzer\2013-09-12\2013-09-12\_001.xad

Created: 9/12/2013 9:53:28 AM  
 Modified: 9/12/2013 10:13:10 AM

**Electropherogram Summary Continued ...**



**Overall Results for sample 9 : Sample 9**

RNA Area:	338.6	RNA Integrity Number (RIN):	N/A (B.02.08)
RNA Concentration:	515 ng/μl	Result Flagging Color:	<span style="background-color: #cccccc; border: 1px solid black; display: inline-block; width: 20px; height: 10px;"></span>
rRNA Ratio [28s / 18s]:	1.7	Result Flagging Label:	RIN N/A

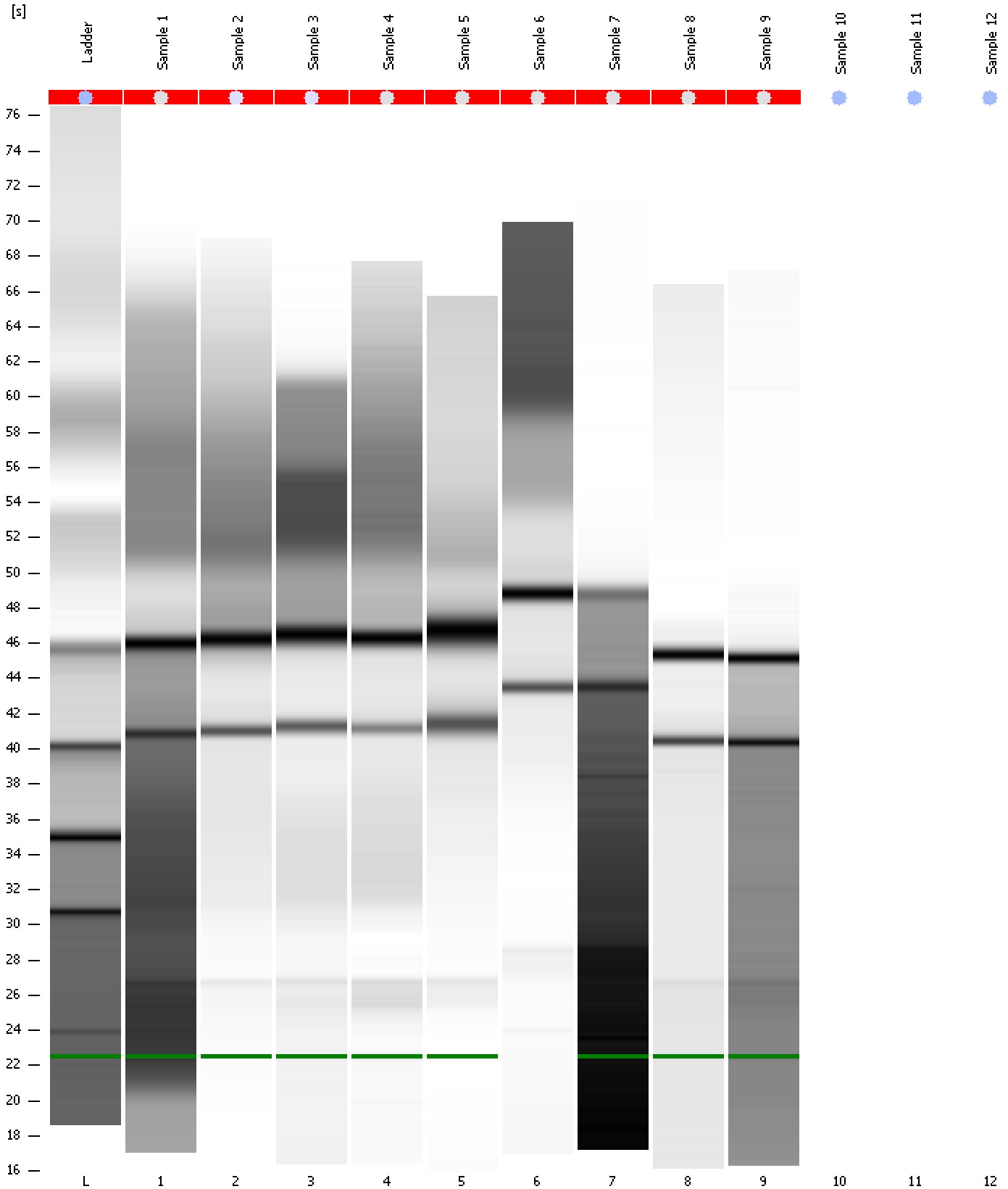
**Fragment table for sample 9 : Sample 9**

Name	Start Size [nt]	End Size [nt]	Area	% of total Area
18S	0	0	20.5	6.1
28S	0	0	35.3	10.4

Assay Class: Eukaryote Total RNA Nano  
Data Path: C:\...ents and Settings\Bioanalyzer\2013-09-12\2013-09-12\_001.xad

Created: 9/12/2013 9:53:28 AM  
Modified: 9/12/2013 10:13:10 AM

**Gel Image**



Assay Class: Eukaryote Total RNA Nano  
Data Path: C:\...ents and Settings\Bioanalyzer\2013-09-12\2013-09-12\_001.xad

Created: 9/12/2013 9:53:28 AM  
Modified: 9/12/2013 10:13:10 AM

**Invalid Samples**

Sample 10 has not been run, no results available.

Sample 11 has not been run, no results available.

Sample 12 has not been run, no results available.