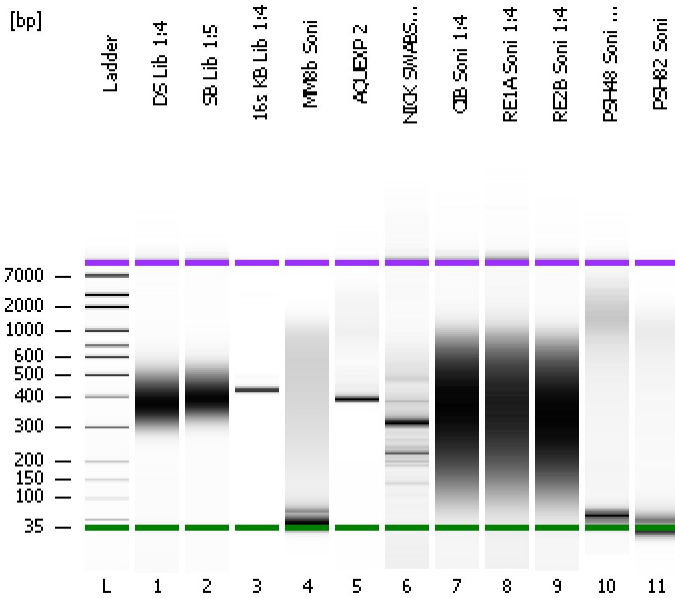


Assay Class: High Sensitivity DNA Assay
Data Path: C:\...ents and Settings\Bioanalyzer\2013-09-13\2013-09-13_006.xad

Created: 9/13/2013 4:40:42 PM
Modified: 9/13/2013 5:29:28 PM

Electrophoresis File Run Summary



Instrument Information:

Instrument Name: DE13701086 Firmware: C.01.069
Serial#: DE13701086 Type: G2938B

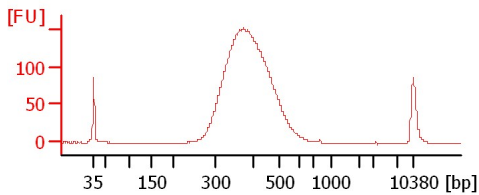
Assay Information:

Assay Origin Path: C:\Program Files\Agilent\2100 bioanalyzer\2100 expert\assays\dsDNA\High Sensitivity DNA.xsy
Assay Class: High Sensitivity DNA Assay
Version: 1.03
Assay Comments: Copyright © 2003-2010 Agilent Technologies

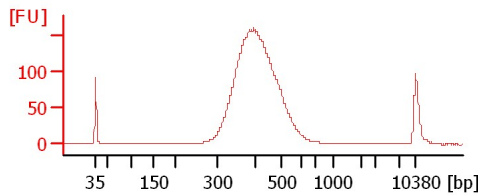
Chip Information:

Chip Lot #:
Reagent Kit Lot #:
Chip Comments:

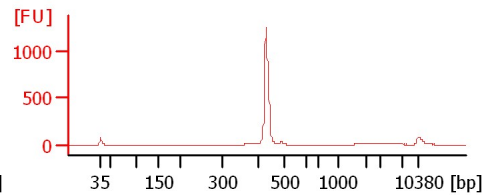
DS Lib 1:4



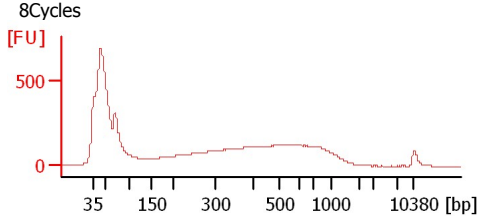
SB Lib 1:5



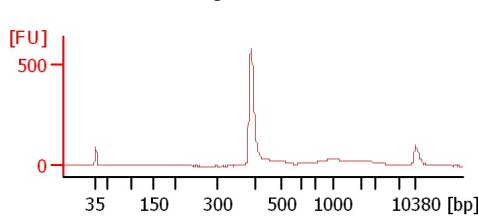
16s KB Lib 1:4



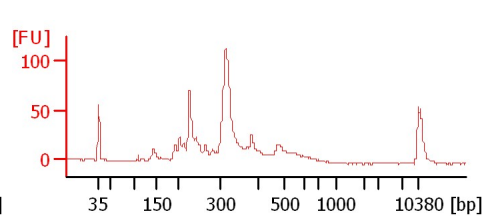
MM8b Soni



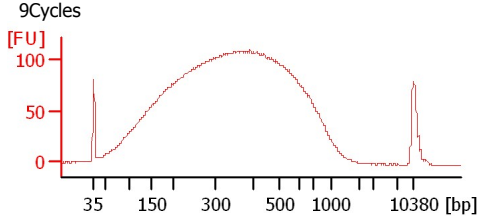
AQUEXP 2



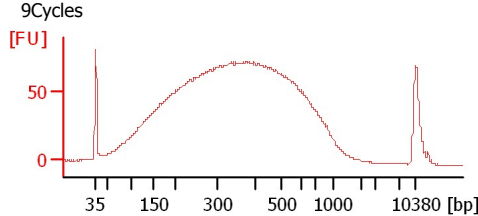
NICK SWABS 1:12



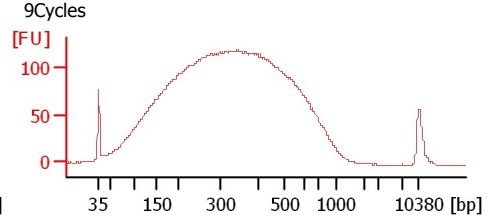
CIB Soni 1:4



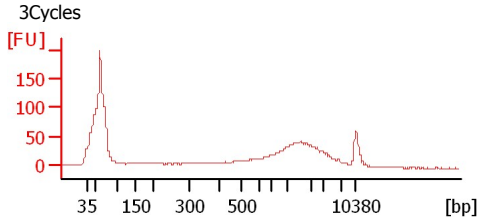
RE1A Soni 1:4



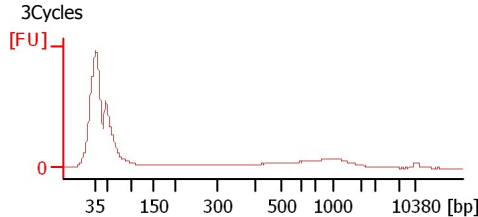
RE2B Soni 1:4



PSH48 Soni 1:4



PSH82 Soni



Assay Class: High Sensitivity DNA Assay
Data Path: C:\...ents and Settings\Bioanalyzer\2013-09-13\2013-09-13_006.xad

Created: 9/13/2013 4:40:42 PM
Modified: 9/13/2013 5:29:28 PM

Electrophoresis File Run Summary (Chip Summary)

Sample Name	Sample Comment	Rest. Digest	Status	Observation	Result Label	Result Color
DS Lib 1:4		<input type="checkbox"/>	✓			
SB Lib 1:5		<input type="checkbox"/>	✓			
16s KB Lib 1:4		<input type="checkbox"/>	✓			
MM8b Soni	8Cycles	<input type="checkbox"/>	✓			
AQUEXP 2		<input type="checkbox"/>	✓			
NICK SWABS 1:12		<input type="checkbox"/>	✓			
CIB Soni 1:4	9Cycles	<input type="checkbox"/>	✓			
RE1A Soni 1:4	9Cycles	<input type="checkbox"/>	✓			
RE2B Soni 1:4	9Cycles	<input type="checkbox"/>	✓			
PSH48 Soni 1:4	3Cycles	<input type="checkbox"/>	✓			
PSH82 Soni	3Cycles	<input type="checkbox"/>	✓			
Ladder		<input type="checkbox"/>	✓			

Chip Lot #

Reagent Kit Lot #

Chip Comments :

Assay Class: High Sensitivity DNA Assay
Data Path: C:\...ents and Settings\Bioanalyzer\2013-09-13\2013-09-13_006.xad

Created: 9/13/2013 4:40:42 PM
Modified: 9/13/2013 5:29:28 PM

Electrophoresis Assay Details

General Analysis Settings

Number of Available Sample and Ladder Wells (Max.) : 12
Minimum Visible Range [s] : 32
Maximum Visible Range [s] : 138
Start Analysis Time Range [s] : 33
End Analysis Time Range [s] : 137.5
Ladder Concentration [pg/μl] : 1950
Uses Standard Area for Ladder Fragments
Lower Marker Concentration [pg/μl] : 125
Upper Marker Concentration [pg/μl] : 75
Used Upper Marker for Quantitation
Standard Curve Fit is Point to Point
Show Data Aligned to Lower and Upper Marker

Integrator Settings

Integration Start Time [s] : 33.05
Integration End Time [s] : 137
Slope Threshold : 0.8
Height Threshold [FU] : 5
Area Threshold : 0.1
Width Threshold [s] : 0.6
Baseline Plateau [s] : 0.5

Filter Settings

Filter Width [s] : 0.5
Polynomial Order : 4

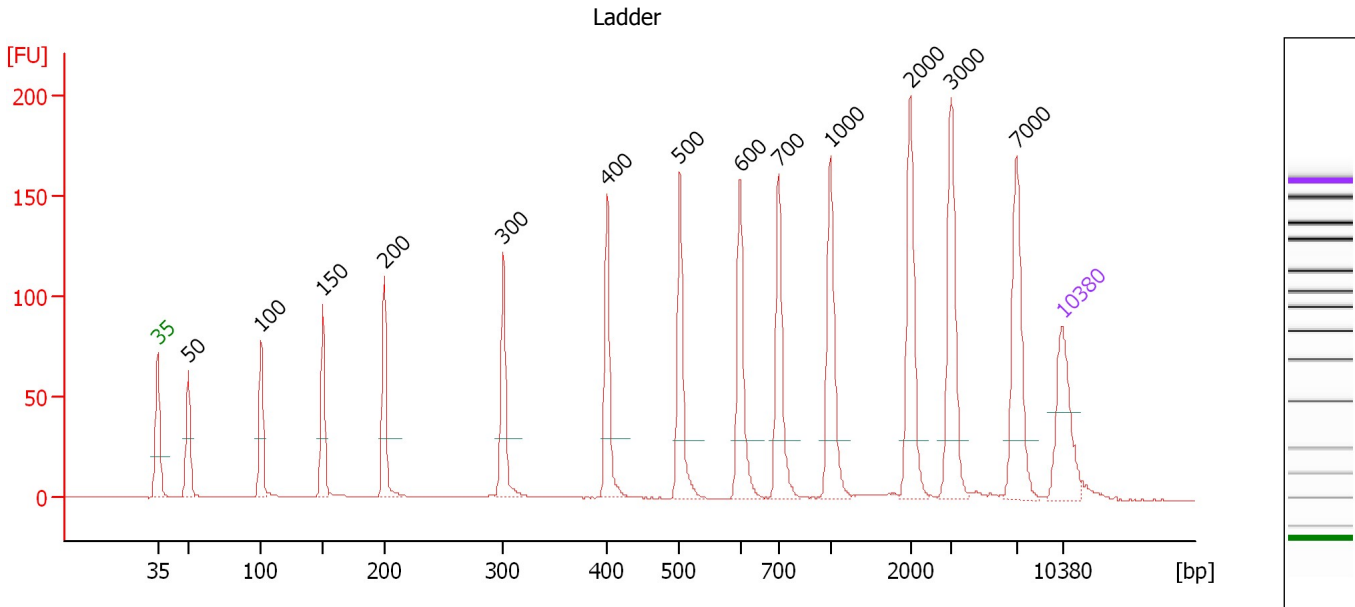
Ladder

Ladder Peak	Size	Area
1	35	160
2	50	210
3	100	208
4	150	221
5	200	242
6	300	270
7	400	305
8	500	306
9	600	336
10	700	321
11	1000	366
12	2000	413
13	3000	411
14	7000	400
15	10380	214

Assay Class: High Sensitivity DNA Assay
 Data Path: C:\...ents and Settings\Bioanalyzer\2013-09-13\2013-09-13_006.xad

Created: 9/13/2013 4:40:42 PM
 Modified: 9/13/2013 5:29:28 PM

Electropherogram Summary



Overall Results for Ladder

Noise: 0.1

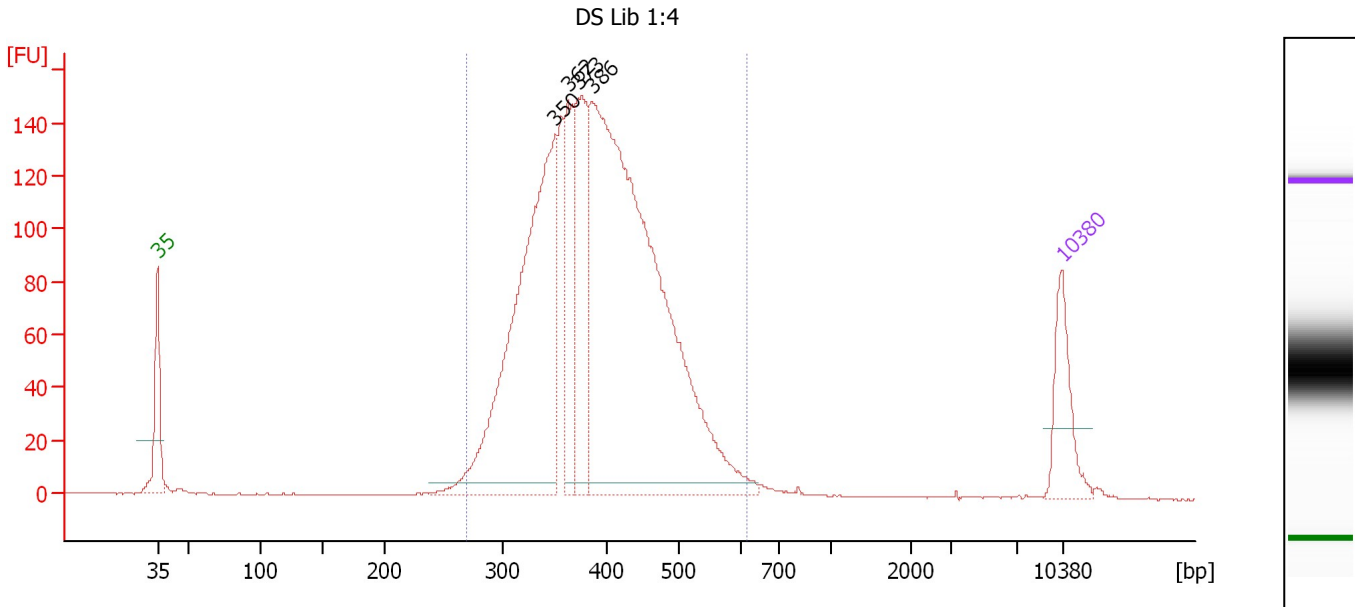
Peak table for Ladder

Peak	Size [bp]	Conc. [pg/μl]	Molarity [pmol/l]	Observations
1	35	125.00	5,411.3	Lower Marker
2	50	150.00	4,545.5	Ladder Peak
3	100	150.00	2,272.7	Ladder Peak
4	150	150.00	1,515.2	Ladder Peak
5	200	150.00	1,136.4	Ladder Peak
6	300	150.00	757.6	Ladder Peak
7	400	150.00	568.2	Ladder Peak
8	500	150.00	454.5	Ladder Peak
9	600	150.00	378.8	Ladder Peak
10	700	150.00	324.7	Ladder Peak
11	1,000	150.00	227.3	Ladder Peak
12	2,000	150.00	113.6	Ladder Peak
13	3,000	150.00	75.8	Ladder Peak
14	7,000	150.00	32.5	Ladder Peak
15	10,380	75.00	10.9	Upper Marker

Assay Class: High Sensitivity DNA Assay
 Data Path: C:\...ents and Settings\Bioanalyzer\2013-09-13\2013-09-13_006.xad

Created: 9/13/2013 4:40:42 PM
 Modified: 9/13/2013 5:29:28 PM

Electropherogram Summary Continued ...



Overall Results for sample 1 : DS Lib 1:4

Number of peaks found: 4 Corr. Area 1: 2,351.0
 Noise: 0.2

Peak table for sample 1 : DS Lib 1:4

Peak	Size [bp]	Conc. [pg/μl]	Molarity [pmol/l]	Observations
1	35	125.00	5,411.3	Lower Marker
2	350	708.67	3,070.4	
3	362	163.69	684.3	
4	373	220.30	895.3	
5	386	1,214.54	4,773.0	
6	10,380	75.00	10.9	Upper Marker

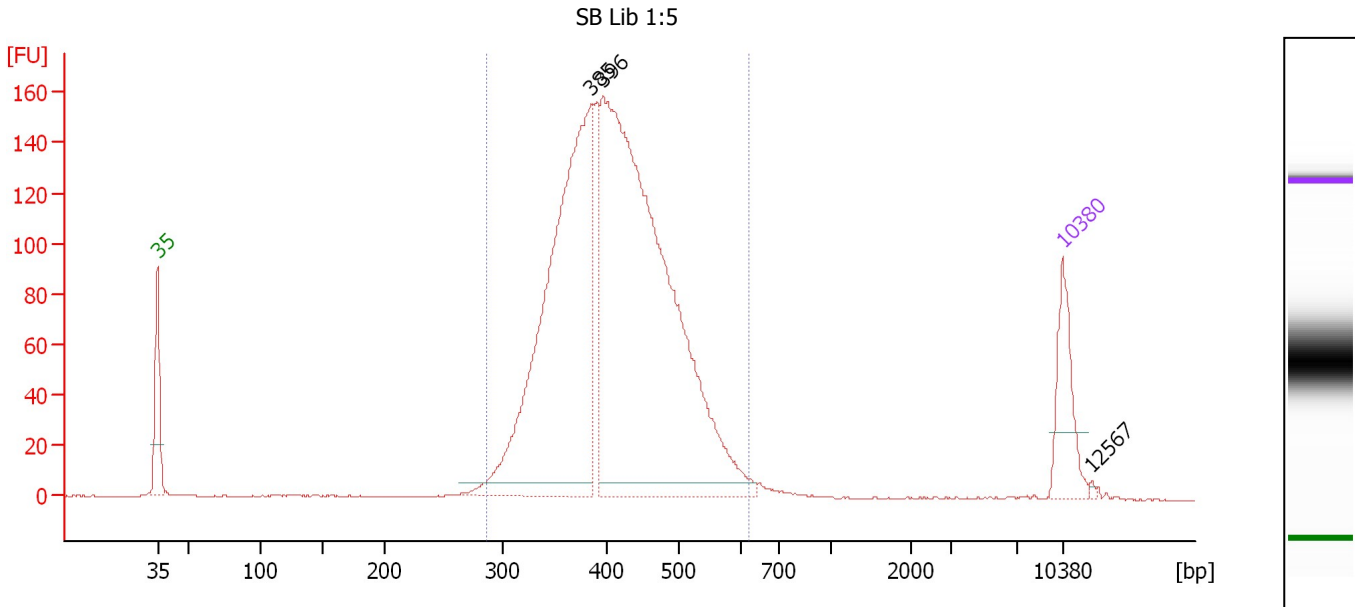
Region table for sample 1 : DS Lib 1:4

From [bp]	To [bp]	Average Size [bp]	Molarity [pmol/l]	Conc. [pg/μl]	Corr. Area	% of Total	Size distribution in CV [%]	Color
269	616	396	9,495.4	2,396.52	2,351.0	97	16.6	Blue

Assay Class: High Sensitivity DNA Assay
 Data Path: C:\...ents and Settings\Bioanalyzer\2013-09-13\2013-09-13_006.xad

Created: 9/13/2013 4:40:42 PM
 Modified: 9/13/2013 5:29:28 PM

Electropherogram Summary Continued ...



Overall Results for sample 2 : SB Lib 1:5

Number of peaks found: 3 Corr. Area 1: 2,146.2
 Noise: 0.1

Peak table for sample 2 : SB Lib 1:5

Peak	Size [bp]	Conc. [pg/μl]	Molarity [pmol/l]	Observations
1	35	125.00	5,411.3	Lower Marker
2	385	810.65	3,190.5	
3	396	1,182.81	4,524.0	
4	10,380	75.00	10.9	Upper Marker
5	12,567	0.00	0.0	

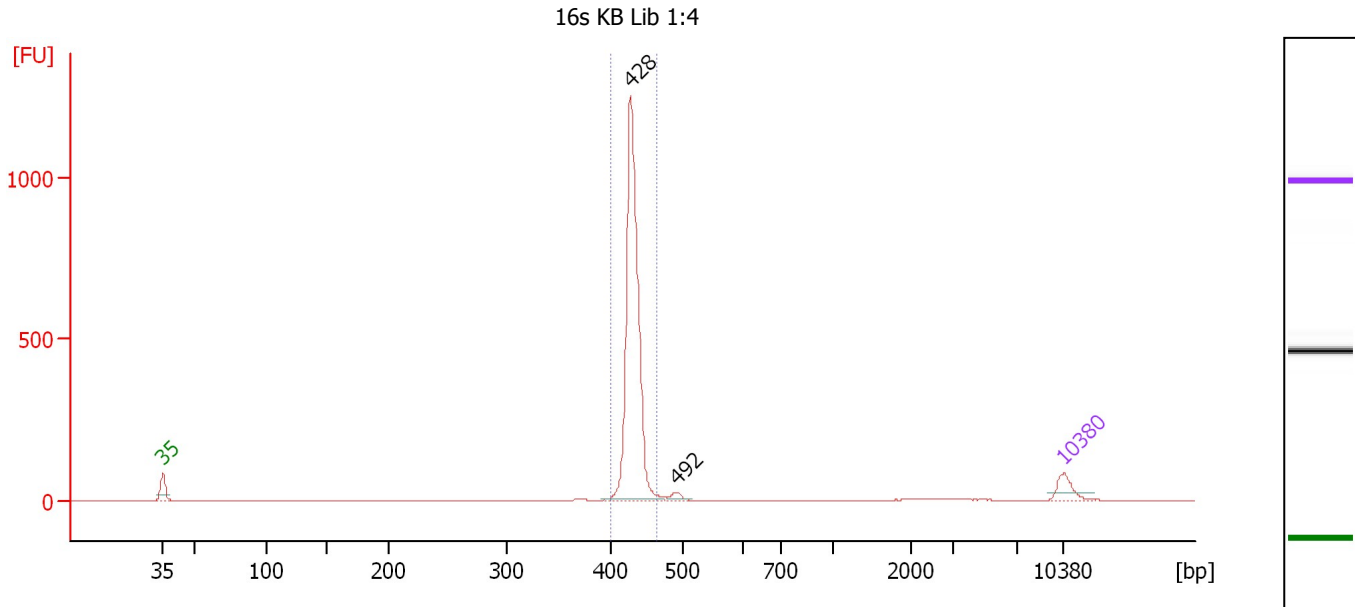
Region table for sample 2 : SB Lib 1:5

From [bp]	To [bp]	Average Size [bp]	Molarity [pmol/l]	Conc. [pg/μl]	Corr. Area	% of Total	Size distribution in CV [%]	Color
287	622	415	7,825.1	2,084.51	2,146.2	98	15.3	Blue

Assay Class: High Sensitivity DNA Assay
 Data Path: C:\...ents and Settings\Bioanalyzer\2013-09-13\2013-09-13_006.xad

Created: 9/13/2013 4:40:42 PM
 Modified: 9/13/2013 5:29:28 PM

Electropherogram Summary Continued ...



Overall Results for sample 3 : 16s KB Lib 1:4

Number of peaks found: 2 Corr. Area 1: 1,664.6
 Noise: 0.1

Peak table for sample 3 : 16s KB Lib 1:4

Peak	Size [bp]	Conc. [pg/μl]	Molarity [pmol/l]	Observations
1	35	125.00	5,411.3	Lower Marker
2	428	1,742.50	6,161.5	
3	492	36.95	113.9	
4	10,380	75.00	10.9	Upper Marker

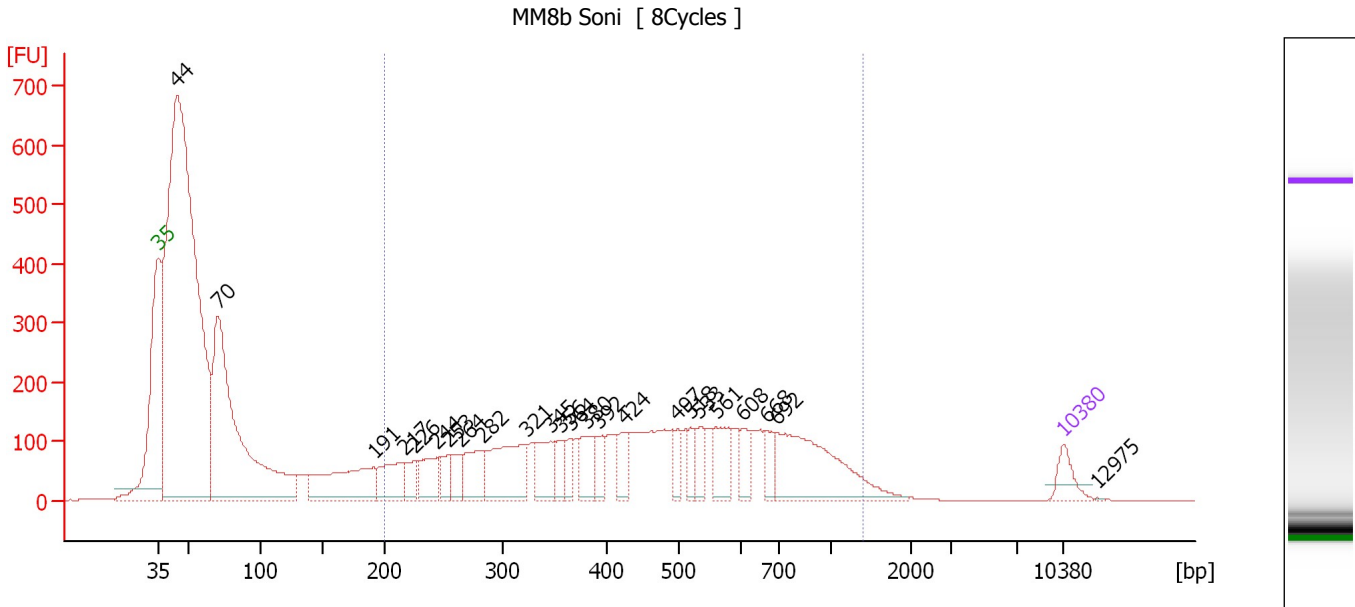
Region table for sample 3 : 16s KB Lib 1:4

From [bp]	To [bp]	Average Size [bp]	Molarity [pmol/l]	Conc. [pg/μl]	Corr. Area	% of Total	Size distribution in CV [%]	Color
402	464	431	6,062.3	1,725.16	1,664.6	92	2.0	Blue

Assay Class: High Sensitivity DNA Assay
 Data Path: C:\...ents and Settings\Bioanalyzer\2013-09-13\2013-09-13_006.xad

Created: 9/13/2013 4:40:42 PM
 Modified: 9/13/2013 5:29:28 PM

Electropherogram Summary Continued ...



Overall Results for sample 4 : MM8b Soni

Number of peaks found: 24 Corr. Area 1: 4,783.4
 Noise: 0.4

Peak table for sample 4 : MM8b Soni

Peak	Size [bp]	Conc. [pg/μl]	Molarity [pmol/l]	Observations
1	35	125.00	5,411.3	Lower Marker
2	44	5,751.85	196,036.6	
3	70	2,129.70	45,883.8	
4	191	501.65	3,975.0	
5	217	245.74	1,716.1	
6	226	102.28	686.3	
7	244	202.97	1,260.0	
8	253	102.32	611.7	
9	264	109.83	630.7	
10	282	234.68	1,262.8	
11	321	405.20	1,910.4	
12	345	196.54	862.3	
13	356	108.52	462.5	
14	364	83.11	346.0	
15	380	160.16	638.4	
16	392	101.21	391.7	
17	424	121.20	433.3	
18	497	82.47	251.6	
19	518	81.01	237.1	
20	533	104.47	297.0	
21	561	171.55	463.5	
22	608	92.83	231.5	
23	668	85.49	193.8	
24	692	611.95	1,339.5	
25	10,380	75.00	10.9	Upper Marker
26	12,975	0.00	0.0	

Assay Class: High Sensitivity DNA Assay
Data Path: C:\...ents and Settings\Bioanalyzer\2013-09-13\2013-09-13_006.xad

Created: 9/13/2013 4:40:42 PM
Modified: 9/13/2013 5:29:28 PM

Electropherogram Summary Continued ...

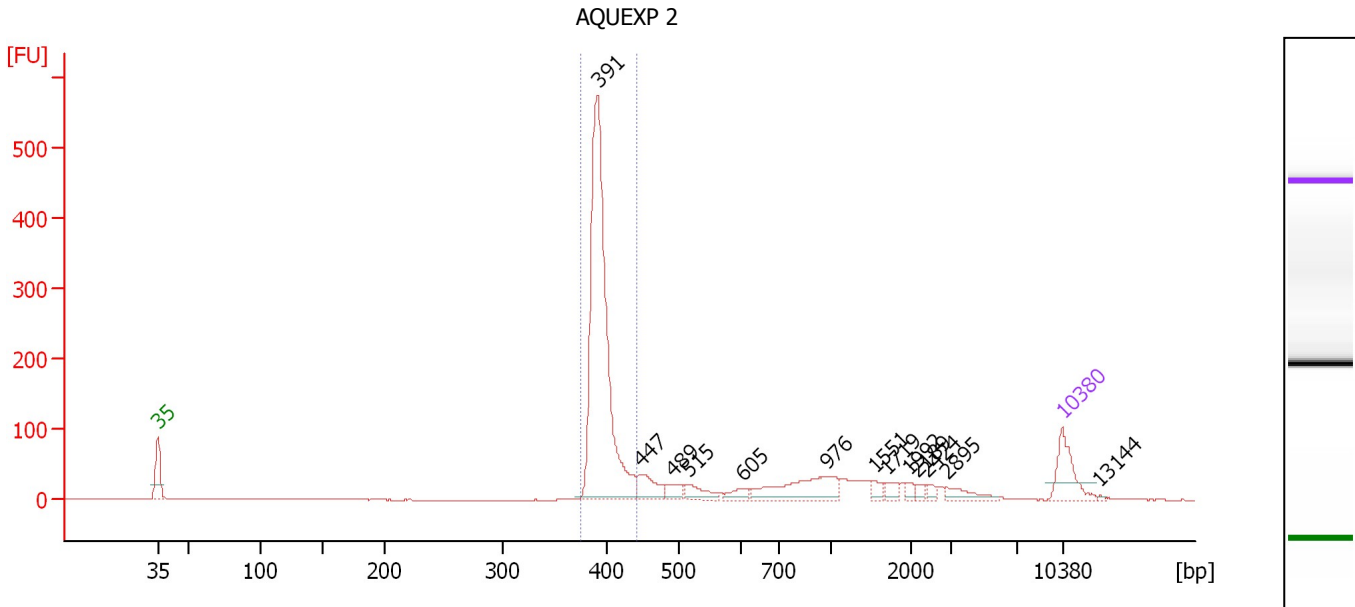
... Region table for sample 4 : MM8b Soni

From [bp]	To [bp]	Average Size [bp]	Molarity [pmol/l]	Conc. [pg/μl]	Corr. Area	% of Total	Size distribution in CV [%]	Color
200	1,396	498	17,218.3	4,355.47	4,783.4	42	46.0	■

Assay Class: High Sensitivity DNA Assay
 Data Path: C:\...ents and Settings\Bioanalyzer\2013-09-13\2013-09-13_006.xad

Created: 9/13/2013 4:40:42 PM
 Modified: 9/13/2013 5:29:28 PM

Electropherogram Summary Continued ...



Overall Results for sample 5 : AQUEXP 2

Number of peaks found: 13 Corr. Area 1: 1,065.8
 Noise: 0.2

Peak table for sample 5 : AQUEXP 2

Peak	Size [bp]	Conc. [pg/μl]	Molarity [pmol/l]	Observations
1	35	125.00	5,411.3	Lower Marker
2	391	909.99	3,527.3	
3	447	64.86	219.9	
4	489	31.16	96.5	
5	515	40.93	120.5	
6	605	23.13	57.9	
7	976	128.16	198.9	
8	1,551	16.59	16.2	
9	1,719	15.93	14.0	
10	1,992	10.92	8.3	
11	2,189	10.31	7.1	
12	2,424	10.23	6.4	
13	2,895	27.99	14.6	
14	10,380	75.00	10.9	Upper Marker
15	13,144	0.00	0.0	

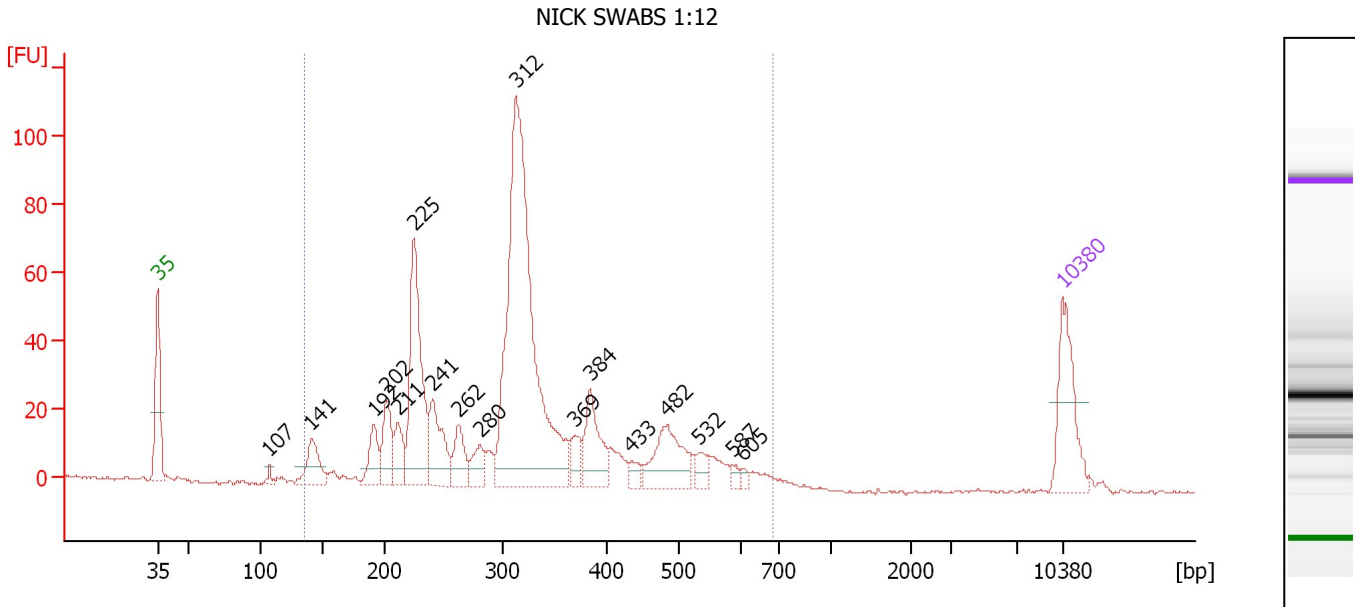
Region table for sample 5 : AQUEXP 2

From [bp]	To [bp]	Average Size [bp]	Molarity [pmol/l]	Conc. [pg/μl]	Corr. Area	% of Total	Size distribution in CV [%]	Color
375	441	395	3,483.4	907.66	1,065.8	61	2.9	Blue

Assay Class: High Sensitivity DNA Assay
 Data Path: C:\...ents and Settings\Bioanalyzer\2013-09-13\2013-09-13_006.xad

Created: 9/13/2013 4:40:42 PM
 Modified: 9/13/2013 5:29:28 PM

Electropherogram Summary Continued ...



Overall Results for sample 6 : NICK SWABS 1:12

Number of peaks found: 17 Corr. Area 1: 902.3
 Noise: 0.4

Peak table for sample 6 : NICK SWABS 1:12

Peak	Size [bp]	Conc. [pg/μl]	Molarity [pmol/l]	Observations
1	35	125.00	5,411.3	Lower Marker
2	107	7.41	105.2	
3	141	57.84	623.2	
4	192	48.23	381.2	
5	202	60.95	457.9	
6	211	42.63	305.6	
7	225	220.61	1,486.4	
8	241	84.31	531.1	
9	262	46.80	270.5	
10	280	33.04	178.9	
11	312	619.66	3,012.5	
12	369	27.32	112.1	
13	384	74.26	293.3	
14	433	12.54	43.8	
15	482	85.12	267.4	
16	532	18.39	52.4	
17	587	6.76	17.4	
18	605	5.76	14.4	
19	10,380	75.00	10.9	Upper Marker

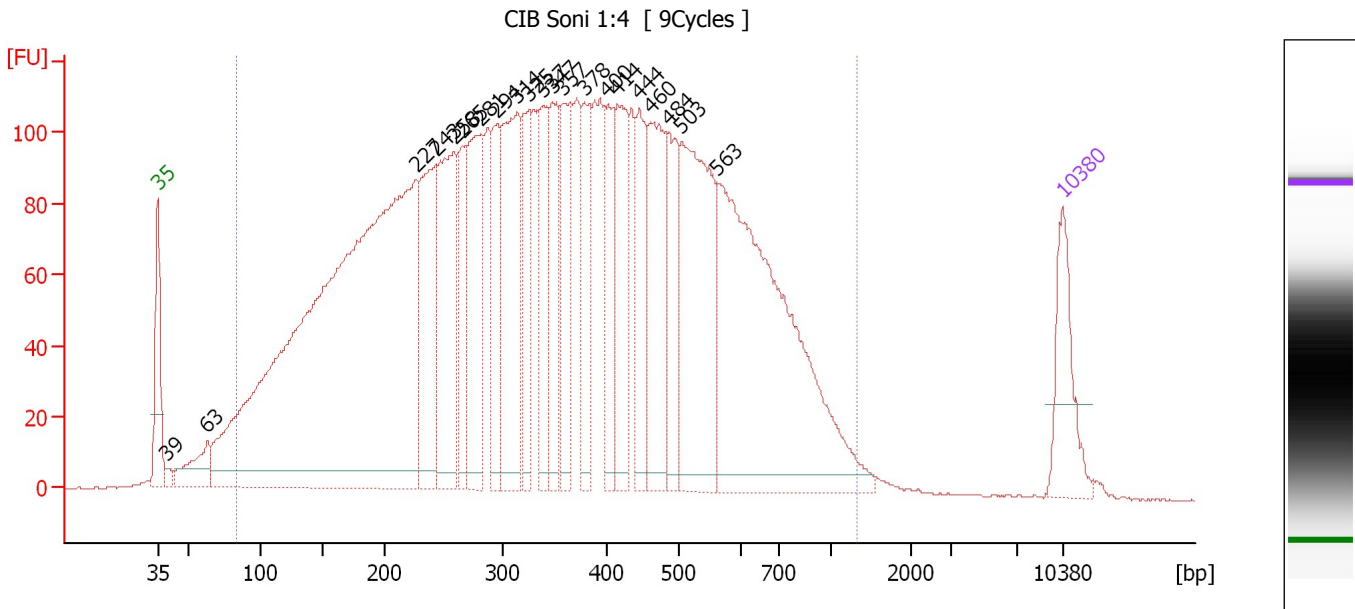
Region table for sample 6 : NICK SWABS 1:12

From [bp]	To [bp]	Average Size [bp]	Molarity [pmol/l]	Conc. [pg/μl]	Corr. Area	% of Total	Size distribution in CV [%]	Color
135	682	329	8,109.4	1,525.63	902.3	94	32.0	Blue

Assay Class: High Sensitivity DNA Assay
 Data Path: C:\...ents and Settings\Bioanalyzer\2013-09-13\2013-09-13_006.xad

Created: 9/13/2013 4:40:42 PM
 Modified: 9/13/2013 5:29:28 PM

Electropherogram Summary Continued ...



Overall Results for sample 7 : CIB Soni 1:4

Number of peaks found: 21 Corr. Area 1: 5,223.6
 Noise: 0.2

Peak table for sample 7 : CIB Soni 1:4

Peak	Size [bp]	Conc. [pg/μl]	Molarity [pmol/l]	Observations
1	35	125.00	5,411.3	Lower Marker
2	39	11.50	441.5	
3	63	67.98	1,637.2	
4	227	1,610.17	10,764.2	
5	243	219.50	1,368.6	
6	258	262.96	1,542.6	
7	265	111.92	639.0	
8	281	212.63	1,145.7	
9	294	119.47	616.2	
10	314	265.64	1,283.8	
11	325	115.38	538.2	
12	337	129.67	582.4	
13	347	135.91	593.9	
14	357	125.12	530.4	
15	378	119.37	479.1	
16	400	98.93	374.6	
17	414	153.40	560.8	
18	444	119.68	408.3	
19	460	179.52	591.0	
20	484	116.01	362.8	
21	503	321.81	969.6	
22	563	604.87	1,627.7	
23	10,380	75.00	10.9	Upper Marker

Assay Class: High Sensitivity DNA Assay
Data Path: C:\...ents and Settings\Bioanalyzer\2013-09-13\2013-09-13_006.xad

Created: 9/13/2013 4:40:42 PM
Modified: 9/13/2013 5:29:28 PM

Electropherogram Summary Continued ...

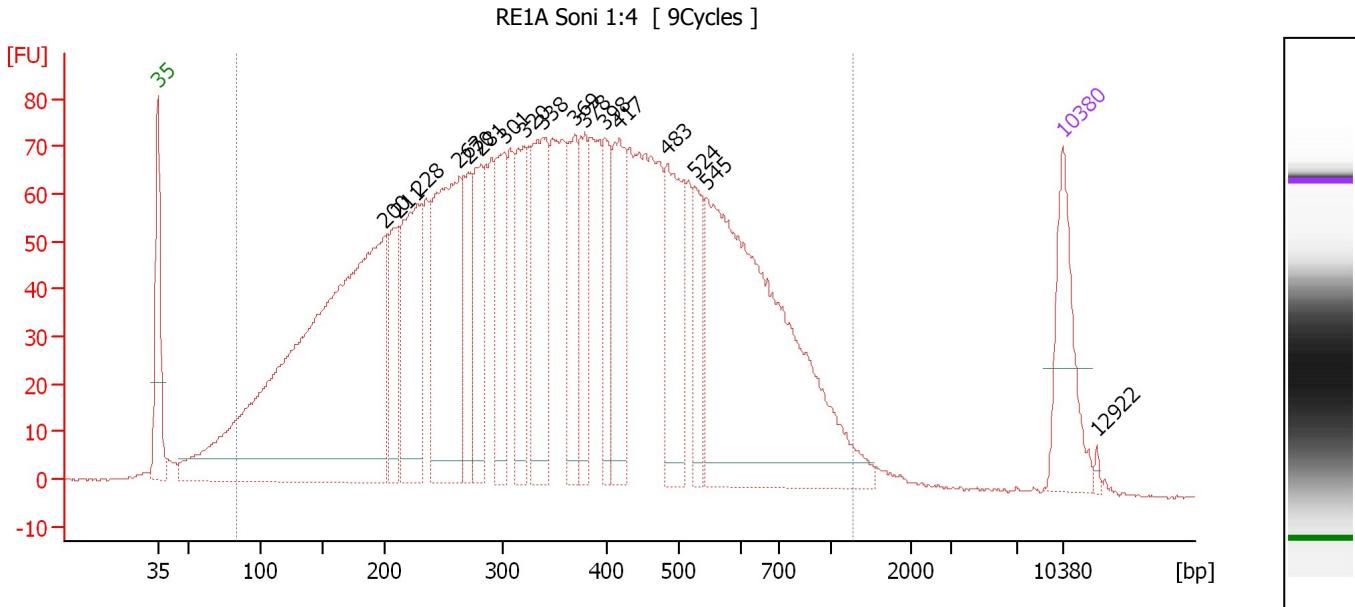
... Region table for sample 7 : CIB Soni 1:4

From [bp]	To [bp]	Average Size [bp]	Molarity [pmol/l]	Conc. [pg/μl]	Corr. Area	% of Total	Size distribution in CV [%]	Color
83	1,342	379	35,018.0	5,897.47	5,223.6	97	49.5	■

Assay Class: High Sensitivity DNA Assay
 Data Path: C:\...ents and Settings\Bioanalyzer\2013-09-13\2013-09-13_006.xad

Created: 9/13/2013 4:40:42 PM
 Modified: 9/13/2013 5:29:28 PM

Electropherogram Summary Continued ...



Overall Results for sample 8 : RE1A Soni 1:4

Number of peaks found: 17 Corr. Area 1: 3,464.4
 Noise: 0.2

Peak table for sample 8 : RE1A Soni 1:4

Peak	Size [bp]	Conc. [pg/μl]	Molarity [pmol/l]	Observations
1	35	125.00	5,411.3	Lower Marker
2	200	927.14	7,040.5	
3	211	98.92	710.2	
4	228	201.09	1,336.0	
5	263	290.95	1,678.4	
6	270	85.39	478.6	
7	281	103.21	555.9	
8	301	114.69	578.1	
9	320	99.76	472.1	
10	338	167.00	748.9	
11	369	102.60	421.5	
12	378	80.08	321.3	
13	398	70.45	267.9	
14	417	113.14	411.3	
15	483	136.93	429.8	
16	524	61.61	178.3	
17	545	519.96	1,444.8	
18	10,380	75.00	10.9	Upper Marker
19	12,922	0.00	0.0	

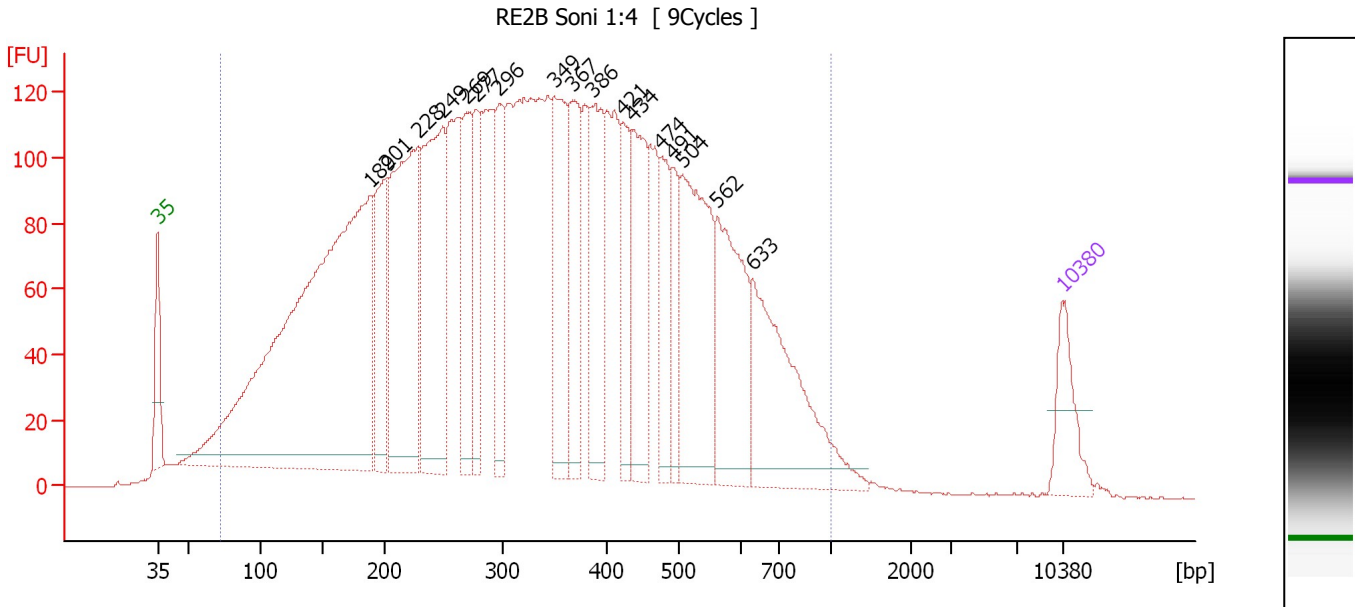
Region table for sample 8 : RE1A Soni 1:4

From [bp]	To [bp]	Average Size [bp]	Molarity [pmol/l]	Conc. [pg/μl]	Corr. Area	% of Total	Size distribution in CV [%]	Color
83	1,282	382	24,284.5	4,133.22	3,464.4	96	49.5	Blue

Assay Class: High Sensitivity DNA Assay
 Data Path: C:\...ents and Settings\Bioanalyzer\2013-09-13\2013-09-13_006.xad

Created: 9/13/2013 4:40:42 PM
 Modified: 9/13/2013 5:29:28 PM

Electropherogram Summary Continued ...



Overall Results for sample 9 : RE2B Soni 1:4

Number of peaks found: 17 Corr. Area 1: 5,666.3
 Noise: 0.2

Peak table for sample 9 : RE2B Soni 1:4

Peak	Size [bp]	Conc. [pg/µl]	Molarity [pmol/l]	Observations
1	35	125.00	5,411.3	Lower Marker
2	189	1,661.18	13,311.5	
3	201	248.73	1,870.7	
4	228	551.24	3,662.0	
5	249	453.98	2,766.9	
6	269	200.36	1,128.0	
7	277	161.21	882.2	
8	296	168.74	862.9	
9	349	271.85	1,181.3	
10	367	197.31	815.6	
11	386	236.16	927.7	
12	421	134.61	484.9	
13	434	223.94	781.3	
14	474	140.39	448.4	
15	491	97.16	299.9	
16	504	362.74	1,089.8	
17	562	284.44	766.5	
18	633	339.44	812.5	
19	10,380	75.00	10.9	Upper Marker

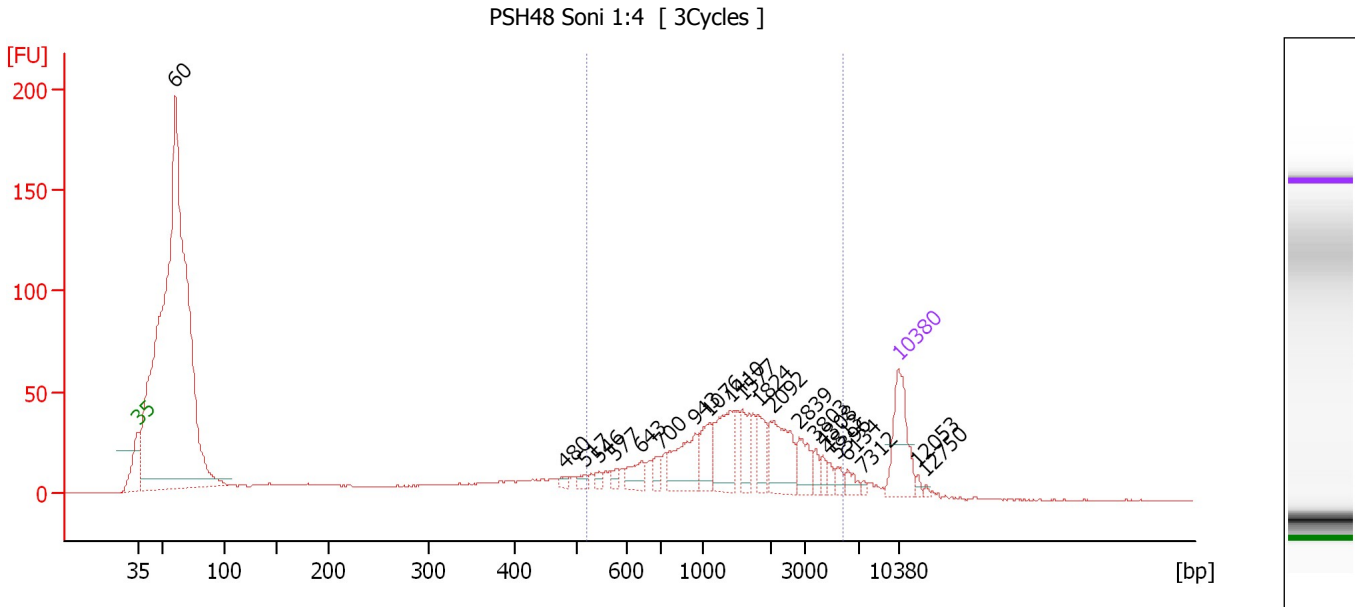
Region table for sample 9 : RE2B Soni 1:4

From [bp]	To [bp]	Average Size [bp]	Molarity [pmol/l]	Conc. [pg/µl]	Corr. Area	% of Total	Size distribution in CV [%]	Color
73	1,000	351	53,023.6	8,327.89	5,666.3	97	47.1	Blue

Assay Class: High Sensitivity DNA Assay
 Data Path: C:\...ents and Settings\Bioanalyzer\2013-09-13\2013-09-13_006.xad

Created: 9/13/2013 4:40:42 PM
 Modified: 9/13/2013 5:29:28 PM

Electropherogram Summary Continued ...



Overall Results for sample 10 : PSH48 Soni 1:4

Number of peaks found: 22 Corr. Area 1: 672.9
 Noise: 0.3

Peak table for sample 10 : PSH48 Soni 1:4

Peak	Size [bp]	Conc. [pg/μl]	Molarity [pmol/l]	Observations
1	35	125.00	5,411.3	Lower Marker
2	60	2,160.90	54,650.6	
3	480	7.82	24.7	
4	517	10.23	30.0	
5	546	10.03	27.9	
6	577	10.72	28.1	
7	643	31.19	73.5	
8	700	18.07	39.1	
9	943	75.82	121.9	
10	1,076	44.67	62.9	
11	1,410	82.18	88.3	
12	1,577	31.18	30.0	
13	1,824	36.38	30.2	
14	2,092	75.35	54.6	
15	2,839	33.43	17.8	
16	3,803	12.59	5.0	
17	4,308	10.18	3.6	
18	4,813	8.38	2.6	
19	5,396	10.61	3.0	
20	6,134	12.52	3.1	
21	7,312	3.88	0.8	
22	10,380	75.00	10.9	Upper Marker
23	12,053	0.00	0.0	
24	12,750	0.00	0.0	

Assay Class: High Sensitivity DNA Assay
Data Path: C:\...ents and Settings\Bioanalyzer\2013-09-13\2013-09-13_006.xad

Created: 9/13/2013 4:40:42 PM
Modified: 9/13/2013 5:29:28 PM

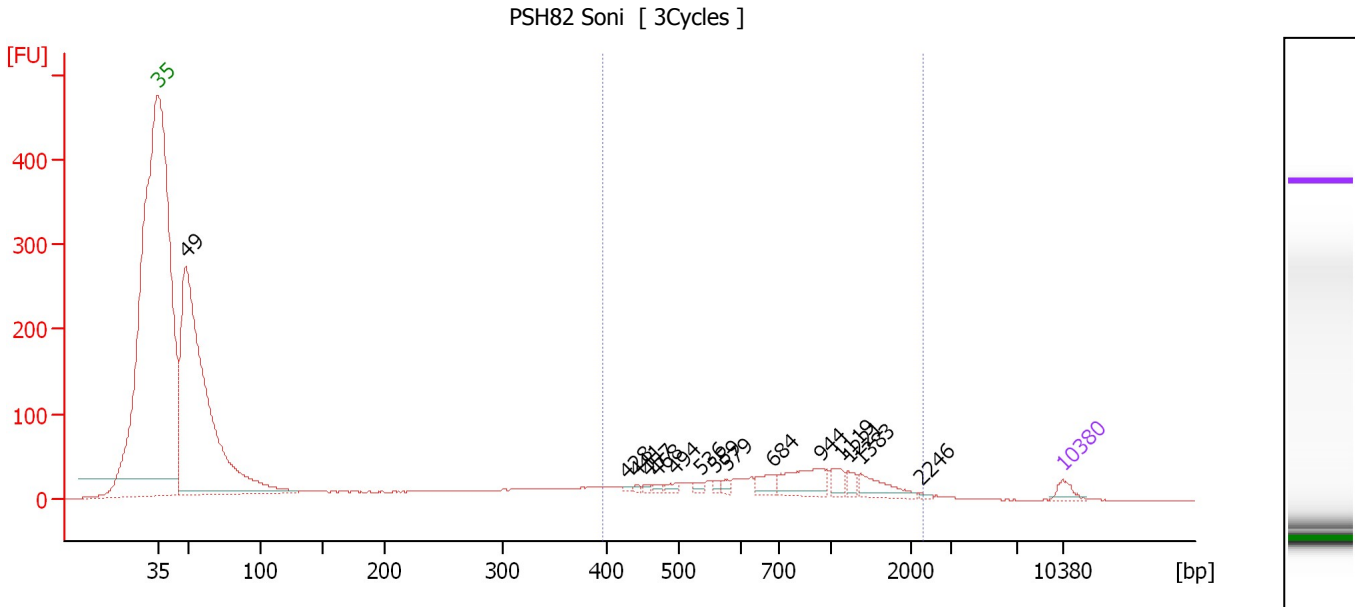
Electropherogram Summary Continued ...**... Region table for sample 10 : PSH48 Soni 1:4**

From [bp]	To [bp]	Average Size [bp]	Molarity [pmol/l]	Conc. [pg/μl]	Corr. Area	% of Total	Size distribution in CV [%]	Co lor
518	5,804	1,714	891.9	666.44	672.9	29	65.1	■

Assay Class: High Sensitivity DNA Assay
 Data Path: C:\...ents and Settings\Bioanalyzer\2013-09-13\2013-09-13_006.xad

Created: 9/13/2013 4:40:42 PM
 Modified: 9/13/2013 5:29:28 PM

Electropherogram Summary Continued ...



Overall Results for sample 11 : PSH82 Soni

Number of peaks found: 15 Corr. Area 1: 628.8
 Noise: 0.2

Peak table for sample 11 : PSH82 Soni

Peak	Size [bp]	Conc. [pg/μl]	Molarity [pmol/l]	Observations
1	35	125.00	5,411.3	Lower Marker
2	49	7,139.59	222,173.6	
3	428	19.85	70.3	
4	441	21.54	74.0	
5	457	26.30	87.2	
6	468	33.12	107.2	
7	494	51.59	158.1	
8	536	48.89	138.2	
9	559	40.42	109.5	
10	579	41.94	109.8	
11	684	150.62	333.8	
12	944	352.76	566.1	
13	1,119	107.18	145.2	
14	1,221	72.54	90.0	
15	1,383	207.80	227.6	
16	2,246	13.84	9.3	
17	10,380	75.00	10.9	Upper Marker

Region table for sample 11 : PSH82 Soni

From [bp]	To [bp]	Average Size [bp]	Molarity [pmol/l]	Conc. [pg/μl]	Corr. Area	% of Total	Size distribution in CV [%]	Color
397	2,325	868	4,654.5	2,098.07	628.8	26	48.3	Blue

Assay Class: High Sensitivity DNA Assay
Data Path: C:\...ents and Settings\Bioanalyzer\2013-09-13\2013-09-13_006.xad

Created: 9/13/2013 4:40:42 PM
Modified: 9/13/2013 5:29:28 PM

Gel Image

