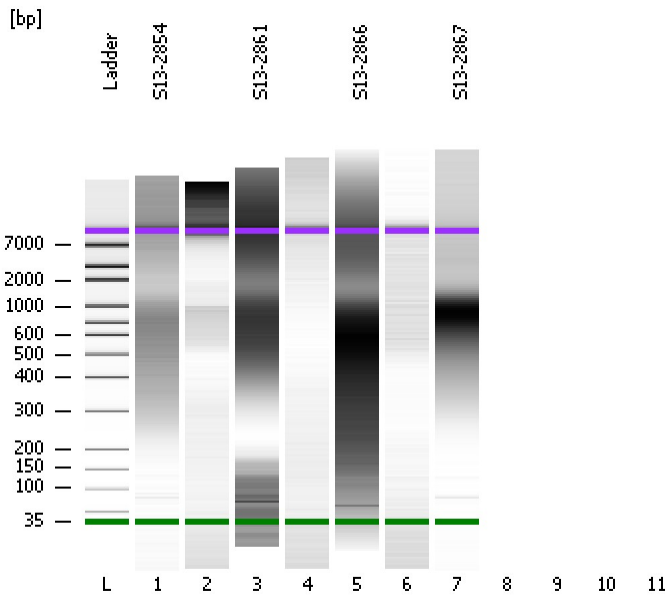


Assay Class: High Sensitivity DNA Assay
Data Path: C:\...ents and Settings\Bioanalyzer\2013-09-16\2013-09-16_002.xad

Created: 9/16/2013 10:34:52 AM
Modified: 9/16/2013 11:12:51 AM

Electrophoresis File Run Summary



Instrument Information:

Instrument Name: DE13701086 Firmware: C.01.069
Serial#: DE13701086 Type: G2938B

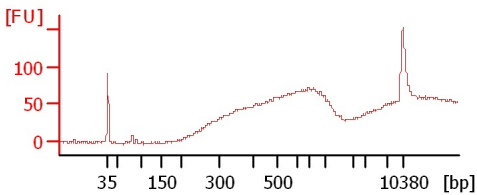
Assay Information:

Assay Origin Path: C:\Program Files\Agilent\2100 bioanalyzer\2100 expert\assays\dsDNA\High Sensitivity DNA.xsy
Assay Class: High Sensitivity DNA Assay
Version: 1.03
Assay Comments: Copyright © 2003-2010 Agilent Technologies

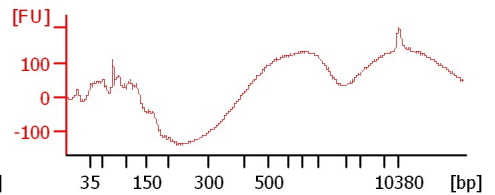
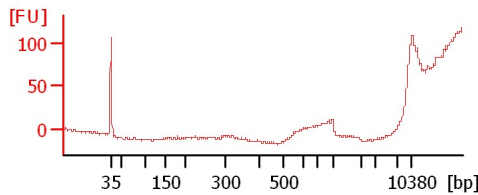
Chip Information:

Chip Lot #:
Reagent Kit Lot #:
Chip Comments:

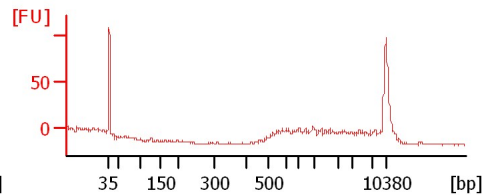
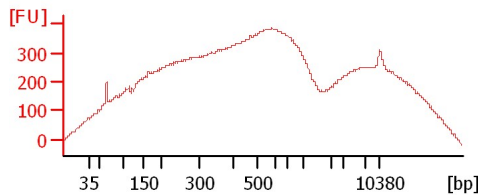
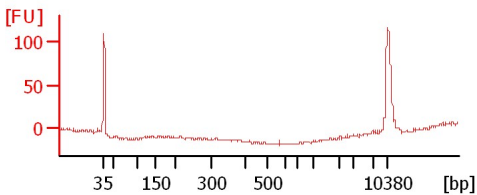
S13-2854



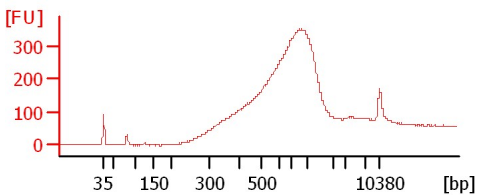
S13-2861



S13-2866



S13-2867



Assay Class: High Sensitivity DNA Assay
Data Path: C:\...ents and Settings\Bioanalyzer\2013-09-16\2013-09-16_002.xad

Created: 9/16/2013 10:34:52 AM
Modified: 9/16/2013 11:12:51 AM

Electrophoresis File Run Summary (Chip Summary)

Sample Name	Sample Comment	Rest. Digest	Status	Observation	Result Label	Result Color
S13-2854		<input type="checkbox"/>				
S13-2861		<input type="checkbox"/>				
S13-2866		<input type="checkbox"/>				
S13-2867		<input type="checkbox"/>				
Ladder		<input type="checkbox"/>				
Chip Lot #				Reagent Kit Lot #		

Chip Comments :

Assay Class: High Sensitivity DNA Assay
Data Path: C:\...ents and Settings\Bioanalyzer\2013-09-16\2013-09-16_002.xad

Created: 9/16/2013 10:34:52 AM
Modified: 9/16/2013 11:12:51 AM

Electrophoresis Assay Details

General Analysis Settings

Number of Available Sample and Ladder Wells (Max.) : 12
Minimum Visible Range [s] : 32
Maximum Visible Range [s] : 138
Start Analysis Time Range [s] : 33
End Analysis Time Range [s] : 137.5
Ladder Concentration [pg/μl] : 1950
Uses Standard Area for Ladder Fragments
Lower Marker Concentration [pg/μl] : 125
Upper Marker Concentration [pg/μl] : 75
Used Upper Marker for Quantitation
Standard Curve Fit is Point to Point
Show Data Aligned to Lower and Upper Marker

Integrator Settings

Integration Start Time [s] : 33.05
Integration End Time [s] : 137
Slope Threshold : 0.8
Height Threshold [FU] : 5
Area Threshold : 0.1
Width Threshold [s] : 0.6
Baseline Plateau [s] : 0.5

Filter Settings

Filter Width [s] : 0.5
Polynomial Order : 4

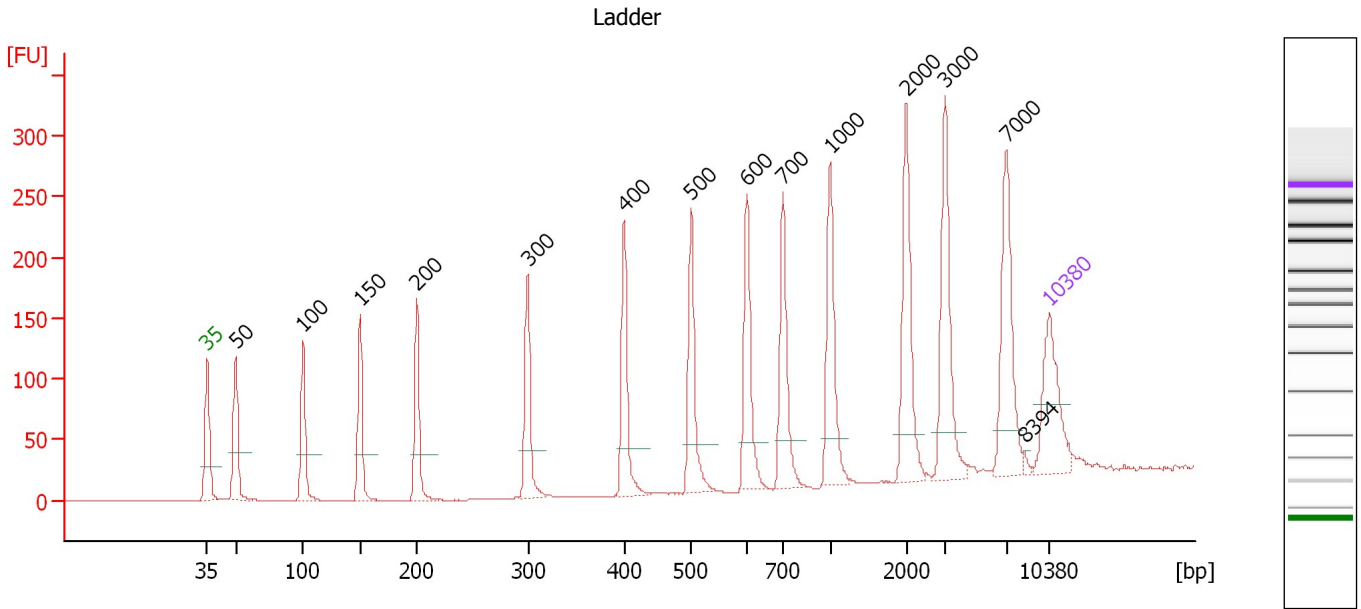
Ladder

Ladder Peak	Size	Area
1	35	160
2	50	210
3	100	208
4	150	221
5	200	242
6	300	270
7	400	305
8	500	306
9	600	336
10	700	321
11	1000	366
12	2000	413
13	3000	411
14	7000	400
15	10380	214

Assay Class: High Sensitivity DNA Assay
 Data Path: C:\...ents and Settings\Bioanalyzer\2013-09-16\2013-09-16_002.xad

Created: 9/16/2013 10:34:52 AM
 Modified: 9/16/2013 11:12:51 AM

Electropherogram Summary



Overall Results for Ladder

Noise: 0.2

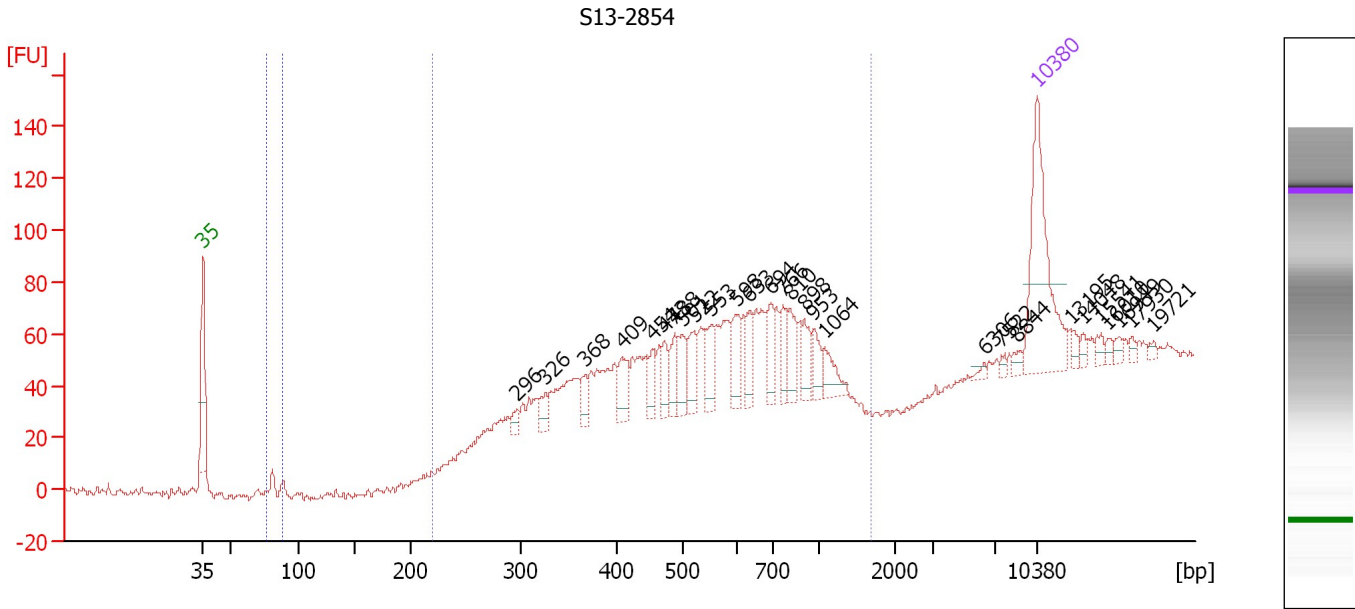
Peak table for Ladder

Peak	Size [bp]	Conc. [pg/μl]	Molarity [pmol/l]	Observations
1	35	125.00	5,411.3	Lower Marker
2	50	150.00	4,545.5	Ladder Peak
3	100	150.00	2,272.7	Ladder Peak
4	150	150.00	1,515.2	Ladder Peak
5	200	150.00	1,136.4	Ladder Peak
6	300	150.00	757.6	Ladder Peak
7	400	150.00	568.2	Ladder Peak
8	500	150.00	454.5	Ladder Peak
9	600	150.00	378.8	Ladder Peak
10	700	150.00	324.7	Ladder Peak
11	1,000	150.00	227.3	Ladder Peak
12	2,000	150.00	113.6	Ladder Peak
13	3,000	150.00	75.8	Ladder Peak
14	7,000	150.00	32.5	Ladder Peak
15	8,394	0.00	0.0	
16	10,380	75.00	10.9	Upper Marker

Assay Class: High Sensitivity DNA Assay
 Data Path: C:\...ents and Settings\Bioanalyzer\2013-09-16\2013-09-16_002.xad

Created: 9/16/2013 10:34:52 AM
 Modified: 9/16/2013 11:12:51 AM

Electropherogram Summary Continued ...



Overall Results for sample 1 : S13-2854

Number of peaks found: 28 Corr. Area 1: 901.2
 Noise: 1.4 Corr. Area 2: 0.0

Peak table for sample 1 : S13-2854

Peak	Size [bp]	Conc. [pg/μl]	Molarity [pmol/l]	Observations
1	35	125.00	5,411.3	Lower Marker
2	296	7.40	37.8	
3	326	11.44	53.1	
4	368	12.00	49.4	
5	409	22.46	83.2	
6	454	15.33	51.1	
7	473	14.29	45.8	
8	488	19.20	59.6	
9	501	21.03	63.7	
10	522	21.87	63.5	
11	553	21.19	58.1	
12	598	20.20	51.2	
13	633	15.78	37.8	
14	694	18.95	41.3	
15	766	15.30	30.3	
16	810	20.17	37.7	
17	898	16.36	27.6	
18	953	13.12	20.9	
19	1,064	15.22	21.7	
20	6,306	2.51	0.6	
21	7,522	2.53	0.5	
22	8,844	3.92	0.7	
23	10,380	75.00	10.9	Upper Marker
24	13,195	0.00	0.0	
25	14,048	0.00	0.0	
26	15,541	0.00	0.0	



Assay Class: High Sensitivity DNA Assay
Data Path: C:\...ents and Settings\Bioanalyzer\2013-09-16\2013-09-16_002.xad

Created: 9/16/2013 10:34:52 AM
Modified: 9/16/2013 11:12:51 AM

Electropherogram Summary Continued ...**... Peak table for sample 1 : S13-2854**

Peak	Size [bp]	Conc. [pg/μl]	Molarity [pmol/l]	Observations
27	16,010	0.00	0.0	
28	16,949	0.00	0.0	
29	17,930	0.00	0.0	
30	19,721	0.00	0.0	

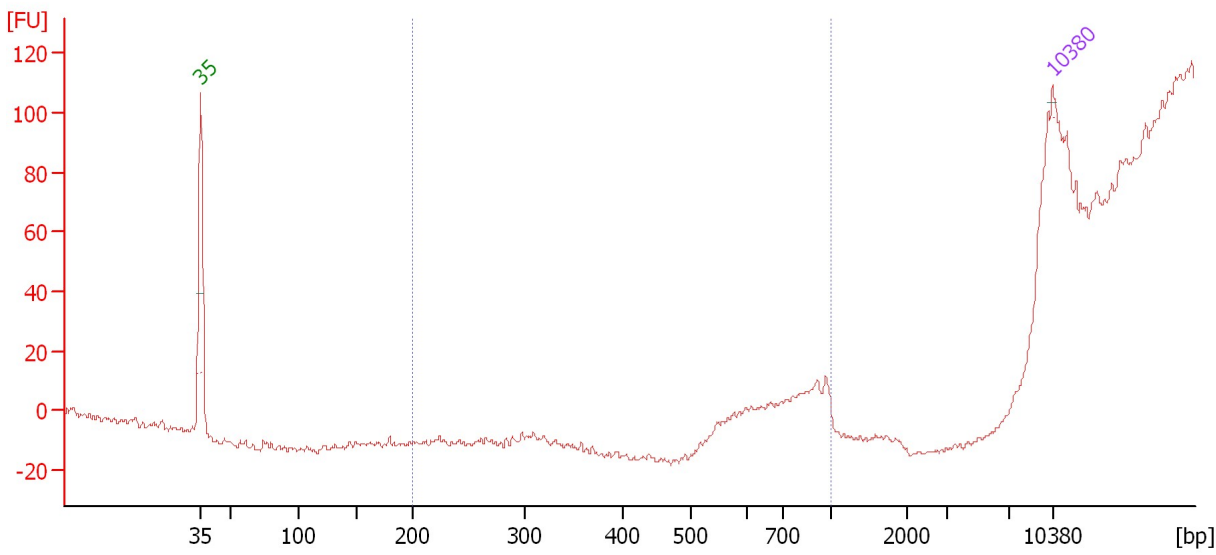
Region table for sample 1 : S13-2854

From [bp]	To [bp]	Average Size [bp]	Molarity [pmol/l]	Conc. [pg/μl]	Corr. Area	% of Total	Size distribution in CV [%]	Color
77	88	0	0.0	0.00	0.0	0	0.0	
220	1,682	574	1,905.4	611.71	901.2	90	36.1	

Assay Class: High Sensitivity DNA Assay
 Data Path: C:\...ents and Settings\Bioanalyzer\2013-09-16\2013-09-16_002.xad

Created: 9/16/2013 10:34:52 AM
 Modified: 9/16/2013 11:12:51 AM

Electropherogram Summary Continued ...



Overall Results for sample 2 :

Number of peaks found: 0 Corr. Area 1: 0.0
 Noise: 0.9

Peak table for sample 2 :

Peak	Size [bp]	Conc. [pg/μl]	Molarity [pmol/l]	Observations
1	35	125.00	5,411.3	Lower Marker
2	10,380	75.00	10.9	Upper Marker

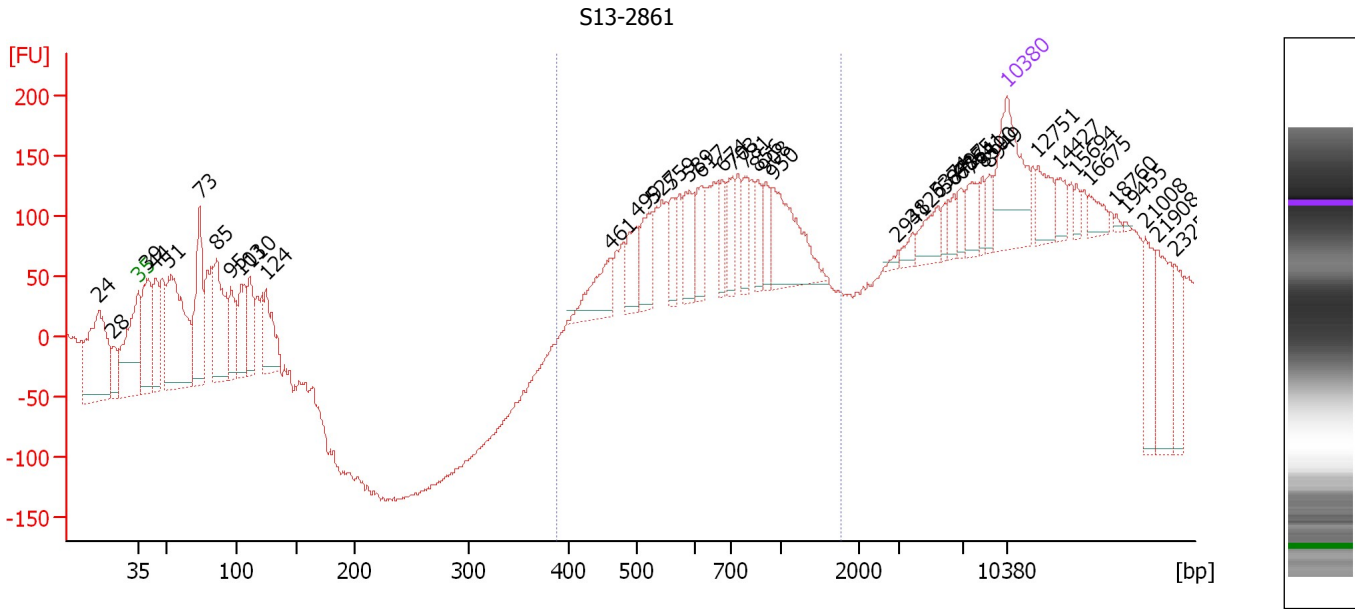
Region table for sample 2 :

From [bp]	To [bp]	Average Size [bp]	Molarity [pmol/l]	Conc. [pg/μl]	Corr. Area	% of Total	Size distribution in CV [%]	Color
200	1,000	0	0.0	0.00	0.0	0	0.0	Blue

Assay Class: High Sensitivity DNA Assay
 Data Path: C:\...ents and Settings\Bioanalyzer\2013-09-16\2013-09-16_002.xad

Created: 9/16/2013 10:34:52 AM
 Modified: 9/16/2013 11:12:51 AM

Electropherogram Summary Continued ...



Overall Results for sample 3 : S13-2861

Number of peaks found: 41 Corr. Area 1: 1,838.1
 Noise: 3.1

Peak table for sample 3 : S13-2861

Peak	Size [bp]	Conc. [pg/μl]	Molarity [pmol/l]	Observations
1	24	0.00	0.0	
2	28	0.00	0.0	
3	35	125.00	5,411.3	Lower Marker
4	39	138.26	5,319.4	
5	44	100.03	3,463.4	
6	51	255.21	7,604.9	
7	73	147.07	3,055.0	
8	85	140.10	2,493.6	
9	95	66.64	1,058.3	
10	103	77.42	1,137.3	
11	110	67.23	922.9	
12	124	85.56	1,042.1	
13	461	53.65	176.3	
14	499	44.42	134.9	
15	527	44.40	127.6	
16	559	26.17	71.0	
17	589	42.20	108.6	
18	617	33.20	81.5	
19	674	28.73	64.6	
20	703	32.83	70.8	
21	781	27.32	53.0	
22	856	22.98	40.7	
23	908	22.98	38.3	
24	950	85.85	136.9	
25	2,941	3.67	1.9	
26	3,826	8.59	3.4	

Assay Class: High Sensitivity DNA Assay
 Data Path: C:\...ents and Settings\Bioanalyzer\2013-09-16\2013-09-16_002.xad


Created: 9/16/2013 10:34:52 AM
 Modified: 9/16/2013 11:12:51 AM

Electropherogram Summary Continued ...

... Peak table for sample 3 : S13-2861

Peak	Size [bp]	Conc. [pg/μl]	Molarity [pmol/l]	Observations
27	5,374	23.09	6.5	
28	5,879	7.96	2.1	
29	6,417	10.68	2.5	
30	6,855	11.63	2.6	
31	7,641	19.75	3.9	
32	8,500	10.00	1.8	
33	8,949	10.19	1.7	
34	10,380	75.00	10.9	Upper Marker
35	12,751	0.00	0.0	
36	14,427	0.00	0.0	
37	15,694	0.00	0.0	
38	16,675	0.00	0.0	
39	18,760	0.00	0.0	
40	19,455	0.00	0.0	
41	21,008	0.00	0.0	
42	21,908	0.00	0.0	
43	23,257	0.00	0.0	

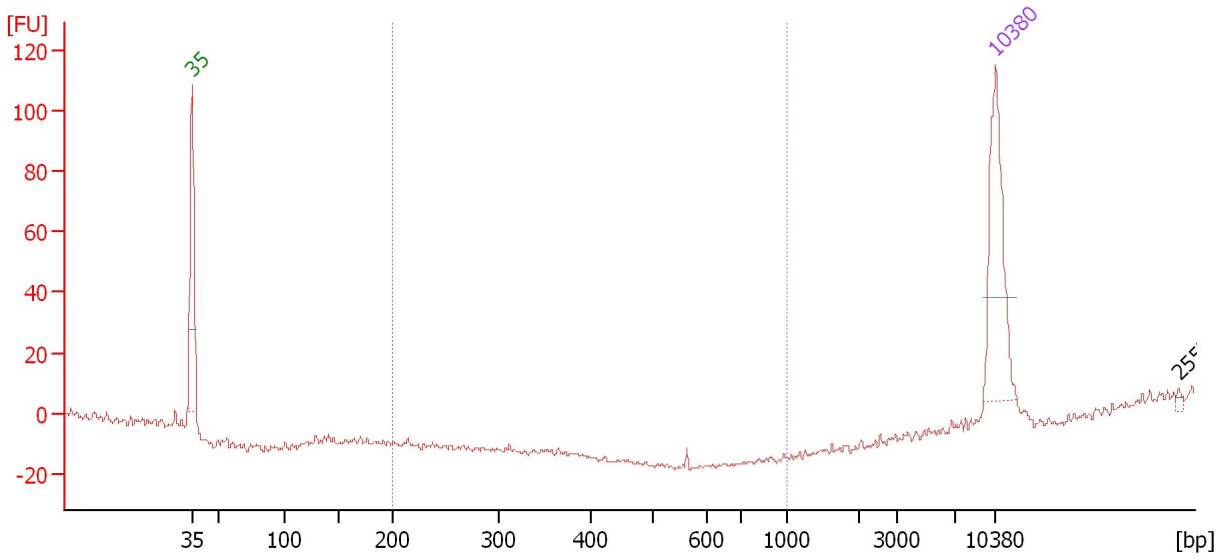
Region table for sample 3 : S13-2861

From [bp]	To [bp]	Average Size [bp]	Molarity [pmol/l]	Conc. [pg/μl]	Corr. Area	% of Total	Size distribution in CV [%]	Color
388	1,754	735	1,558.5	669.67	1,838.1	44	34.6	

Assay Class: High Sensitivity DNA Assay
 Data Path: C:\...ents and Settings\Bioanalyzer\2013-09-16\2013-09-16_002.xad

Created: 9/16/2013 10:34:52 AM
 Modified: 9/16/2013 11:12:51 AM

Electropherogram Summary Continued ...



Overall Results for sample 4 :

Number of peaks found: 1 Corr. Area 1: 0.0
 Noise: 0.8

Peak table for sample 4 :

Peak	Size [bp]	Conc. [pg/μl]	Molarity [pmol/l]	Observations
1	35	125.00	5,411.3	Lower Marker
2	10,380	75.00	10.9	Upper Marker
3	25,574	0.00	0.0	

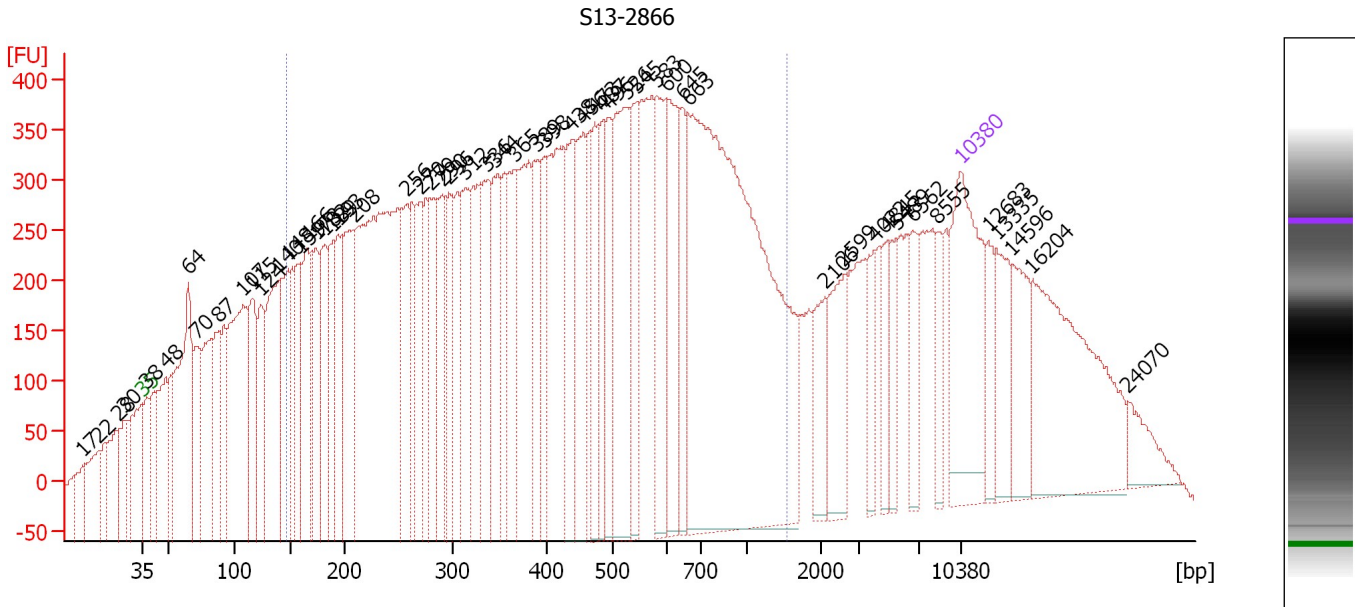
Region table for sample 4 :

From [bp]	To [bp]	Average Size [bp]	Molarity [pmol/l]	Conc. [pg/μl]	Corr. Area	% of Total	Size distribution in CV [%]	Color
200	1,000	0	0.0	0.00	0.0	0	0.0	Blue

Assay Class: High Sensitivity DNA Assay
 Data Path: C:\...ents and Settings\Bioanalyzer\2013-09-16\2013-09-16_002.xad

Created: 9/16/2013 10:34:52 AM
 Modified: 9/16/2013 11:12:51 AM

Electropherogram Summary Continued ...



Overall Results for sample 5 : S13-2866

Number of peaks found: 55 Corr. Area 1: 18,720.7
 Noise: 4.1

Peak table for sample 5 : S13-2866


Peak	Size [bp]	Conc. [pg/μl]	Molarity [pmol/l]	Observations
1	17	0.00	0.0	
2	22	0.00	0.0	
3	28	0.00	0.0	
4	30	0.00	0.0	
5	35	125.00	5,411.3	Lower Marker
6	38	58.59	2,341.7	
7	48	99.66	3,139.3	
8	64	190.18	4,476.7	
9	70	70.58	1,526.8	
10	87	80.35	1,392.2	
11	107	186.07	2,629.5	
12	115	81.30	1,067.6	
13	124	68.53	840.4	
14	140	138.48	1,499.7	
15	148	85.43	874.1	
16	159	60.88	581.1	
17	166	84.69	775.2	
18	173	64.49	563.9	
19	182	67.67	564.7	
20	189	57.65	462.6	
21	193	57.83	453.6	
22	208	107.52	783.6	
23	256	63.58	376.5	
24	270	57.89	325.2	
25	279	60.84	330.9	
26	290	59.24	309.5	

Assay Class: High Sensitivity DNA Assay
 Data Path: C:\...ents and Settings\Bioanalyzer\2013-09-16\2013-09-16_002.xad


Created: 9/16/2013 10:34:52 AM
 Modified: 9/16/2013 11:12:51 AM

Electropherogram Summary Continued ...

... Peak table for sample 5 : S13-2866

Peak	Size [bp]	Conc. [pg/μl]	Molarity [pmol/l]	Observations
27	296	51.17	262.0	
28	312	67.19	325.9	
29	336	67.86	305.8	
30	344	60.53	266.9	
31	365	54.89	228.1	
32	389	49.85	194.4	
33	398	39.99	152.4	
34	438	57.99	200.8	
35	456	61.02	202.8	
36	473	39.90	127.8	
37	487	42.90	133.5	
38	496	39.84	121.7	
39	526	95.33	274.7	
40	545	46.84	130.1	
41	583	61.32	159.5	
42	600	66.92	168.9	
43	645	34.38	80.8	
44	663	420.17	959.8	
45	2,106	27.16	19.5	
46	2,599	36.86	21.5	
47	4,022	18.51	7.0	
48	4,845	16.90	5.3	
49	5,489	18.09	5.0	
50	6,562	21.75	5.0	
51	8,555	14.07	2.5	
52	 10,380	75.00	10.9	Upper Marker
53	12,683	0.00	0.0	
54	13,335	0.00	0.0	
55	14,596	0.00	0.0	
56	16,204	0.00	0.0	
57	24,070	0.00	0.0	

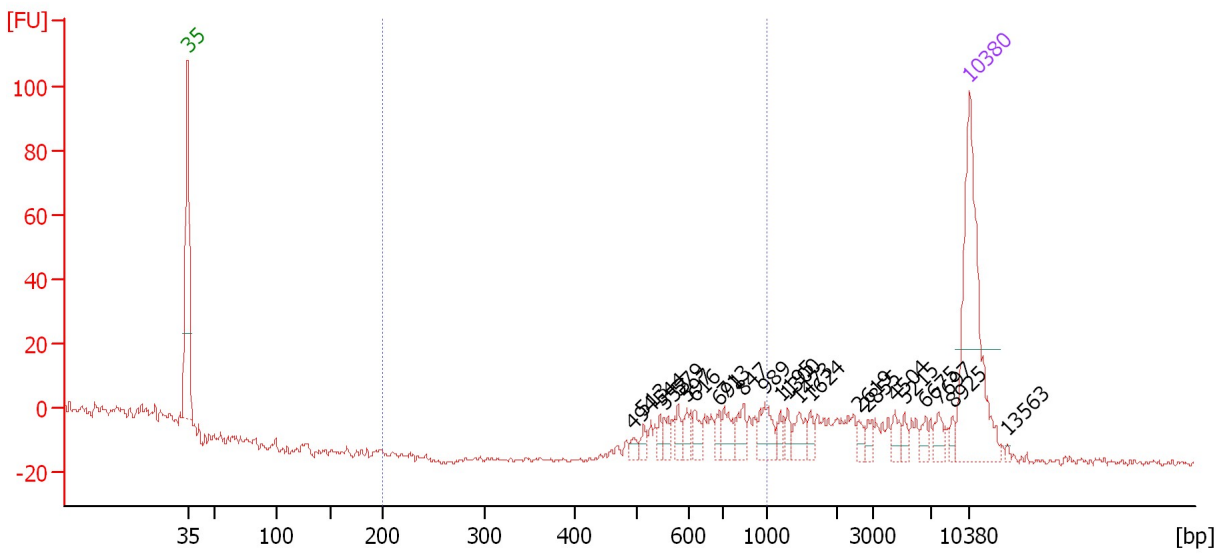
Region table for sample 5 : S13-2866

From [bp]	To [bp]	Average Size [bp]	Molarity [pmol/l]	Conc. [pg/μl]	Corr. Area	% of Total	Size distribution in CV [%]	Color
147	1,535	486	11,393.4	2,417.03	18,720.7	66	56.5	

Assay Class: High Sensitivity DNA Assay
 Data Path: C:\...ents and Settings\Bioanalyzer\2013-09-16\2013-09-16_002.xad

Created: 9/16/2013 10:34:52 AM
 Modified: 9/16/2013 11:12:51 AM

Electropherogram Summary Continued ...



Overall Results for sample 6 :

Number of peaks found: 23 Corr. Area 1: 86.0
 Noise: 0.8

Peak table for sample 6 :

Peak	Size [bp]	Conc. [pg/μl]	Molarity [pmol/l]	Observations
1	35	125.00	5,411.3	Lower Marker
2	494	3.85	11.8	
3	513	4.98	14.7	
4	544	5.73	15.9	
5	553	6.28	17.2	
6	579	6.18	16.2	
7	597	7.50	19.0	
8	616	8.08	19.9	
9	691	6.05	13.3	
10	713	11.49	24.4	
11	847	10.13	18.1	
12	989	14.21	21.8	
13	1,195	4.92	6.2	
14	1,300	4.84	5.6	
15	1,473	9.41	9.7	
16	1,624	4.64	4.3	
17	2,619	3.69	2.1	
18	2,855	4.54	2.4	
19	4,504	5.48	1.8	
20	5,215	3.62	1.1	
21	6,675	4.35	1.0	
22	7,697	5.51	1.1	
23	8,925	3.30	0.6	
24	10,380	75.00	10.9	Upper Marker
25	13,563	0.00	0.0	

Assay Class: High Sensitivity DNA Assay
Data Path: C:\...ents and Settings\Bioanalyzer\2013-09-16\2013-09-16_002.xad

Created: 9/16/2013 10:34:52 AM
Modified: 9/16/2013 11:12:51 AM

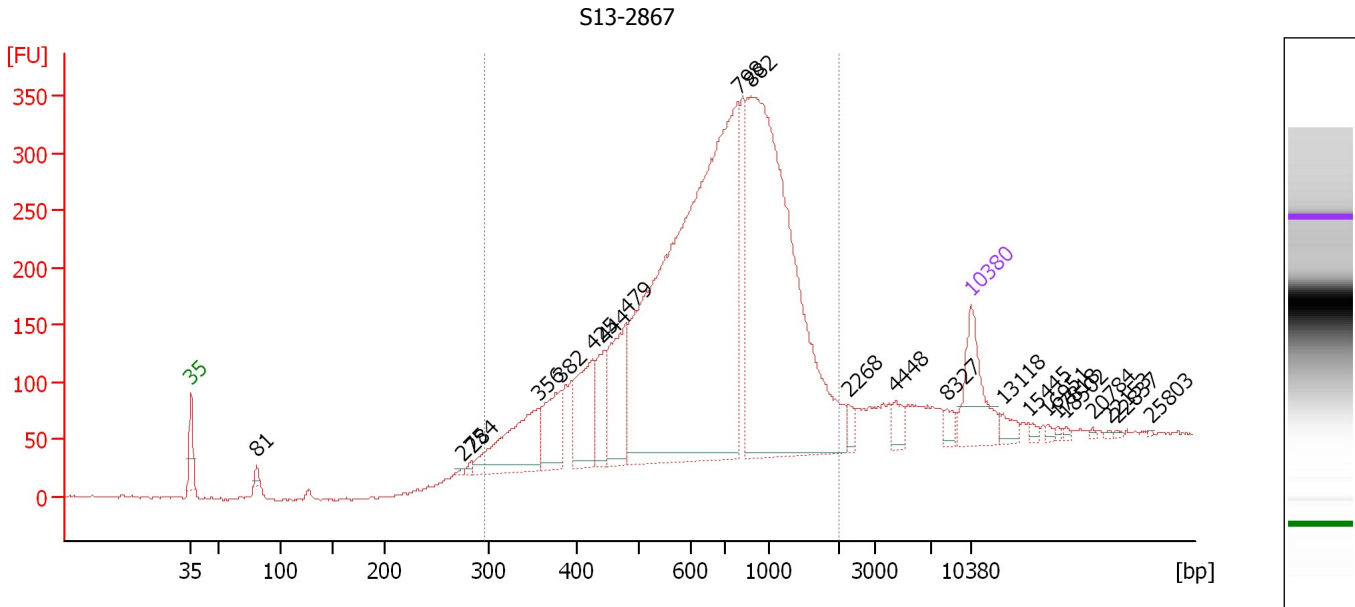
Electropherogram Summary Continued ...**... Region table for sample 6 :**

From [bp]	To [bp]	Average Size [bp]	Molarity [pmol/l]	Conc. [pg/μl]	Corr. Area	% of Total	Size distribution in CV [%]	Color
200	1,000	712	115.8	52.17	86.0	36	19.8	■

Assay Class: High Sensitivity DNA Assay
 Data Path: C:\...ents and Settings\Bioanalyzer\2013-09-16\2013-09-16_002.xad

Created: 9/16/2013 10:34:52 AM
 Modified: 9/16/2013 11:12:51 AM

Electropherogram Summary Continued ...



Overall Results for sample 7 : S13-2867

Number of peaks found: 22 Corr. Area 1: 5,407.0
 Noise: 1.4


Peak table for sample 7 : S13-2867

Peak	Size [bp]	Conc. [pg/μl]	Molarity [pmol/l]	Observations
1	35	125.00	5,411.3	Lower Marker
2	81	11.19	208.2	
3	275	2.50	13.8	
4	284	5.27	28.1	
5	356	157.21	668.3	
6	382	83.90	332.7	
7	425	115.24	410.8	
8	444	66.52	227.0	
9	479	137.53	434.6	
10	798	1,135.92	2,156.4	
11	882	795.38	1,366.6	
12	2,268	12.84	8.6	
13	4,448	17.42	5.9	
14	8,327	11.51	2.1	
15	10,380	75.00	10.9	Upper Marker
16	13,118	0.00	0.0	
17	15,445	0.00	0.0	
18	16,951	0.00	0.0	
19	17,818	0.00	0.0	
20	18,502	0.00	0.0	
21	20,784	0.00	0.0	
22	22,153	0.00	0.0	
23	22,837	0.00	0.0	
24	25,803	0.00	0.0	

Assay Class: High Sensitivity DNA Assay
Data Path: C:\...ents and Settings\Bioanalyzer\2013-09-16\2013-09-16_002.xad

Created: 9/16/2013 10:34:52 AM
Modified: 9/16/2013 11:12:51 AM

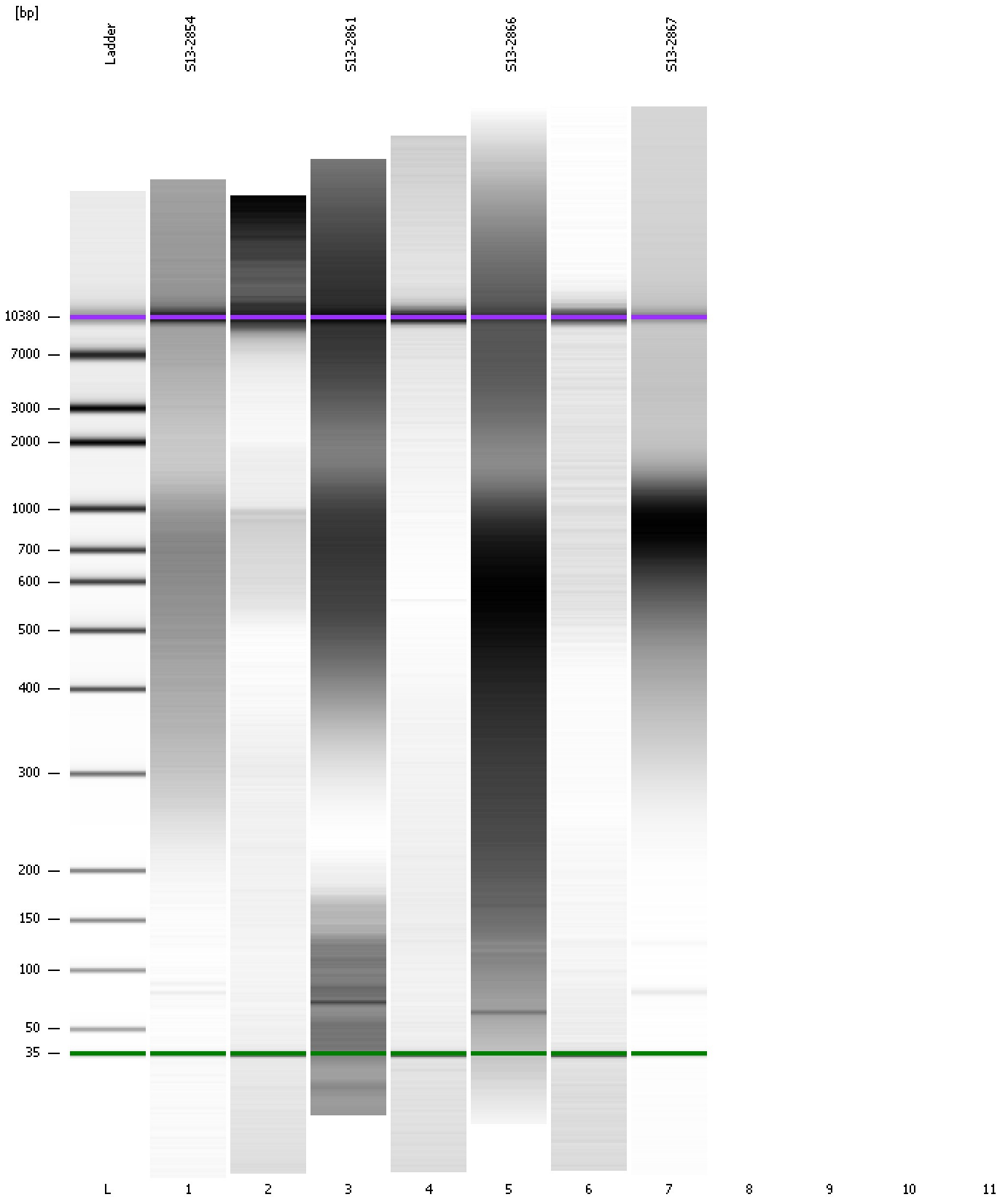
Electropherogram Summary Continued ...**... Region table for sample 7 : S13-2867**

From [bp]	To [bp]	Average Size [bp]	Molarity [pmol/l]	Conc. [pg/μl]	Corr. Area	% of Total	Size distribution in CV [%]	Co lor
297	2,000	771	6,527.2	2,653.52	5,407.0	91	44.5	

Assay Class: High Sensitivity DNA Assay
Data Path: C:\...ents and Settings\Bioanalyzer\2013-09-16\2013-09-16_002.xad

Created: 9/16/2013 10:34:52 AM
Modified: 9/16/2013 11:12:51 AM

Gel Image



Assay Class: High Sensitivity DNA Assay
Data Path: C:\...ents and Settings\Bioanalyzer\2013-09-16\2013-09-16_002.xad

Created: 9/16/2013 10:34:52 AM
Modified: 9/16/2013 11:12:51 AM

Invalid Samples

Sample 8 has not been run, no results available.

Sample 9 has not been run, no results available.

Sample 10 has not been run, no results available.

Sample 11 has not been run, no results available.