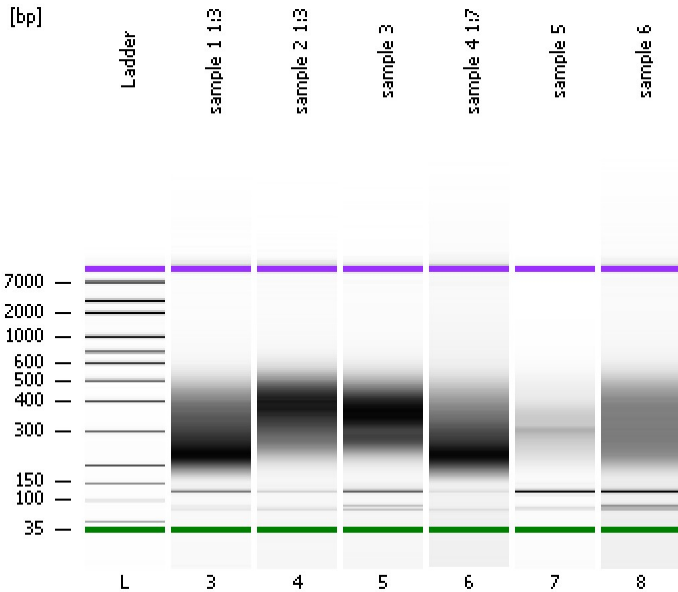


Assay Class: High Sensitivity DNA Assay  
Data Path: C:\...Settings\Bioanalyzer\2013-09-17\2013-09-17\_001\_ChIP\_Lib.xad

Created: 9/17/2013 5:08:43 PM  
Modified: 9/17/2013 5:56:14 PM

**Electrophoresis File Run Summary**



Instrument Information:

Instrument Name: DE13701086      Firmware: C.01.069  
Serial#: DE13701086      Type: G2938B

Assay Information:

Assay Origin Path: C:\Program Files\Agilent\2100 bioanalyzer\2100 expert\assays\dsDNA\High Sensitivity DNA.xsy  
Assay Class: High Sensitivity DNA Assay  
Version: 1.03  
Assay Comments: Copyright © 2003-2010 Agilent Technologies

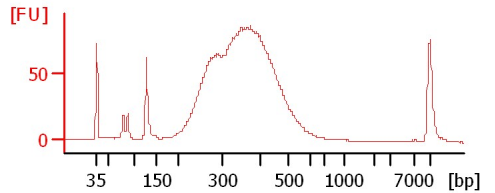
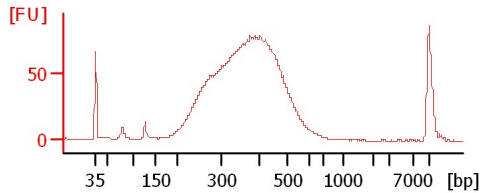
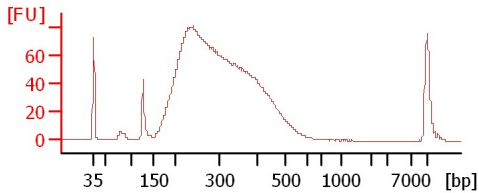
Chip Information:

Chip Lot #:  
Reagent Kit Lot #:  
Chip Comments:

sample 1 1:3

sample 2 1:3

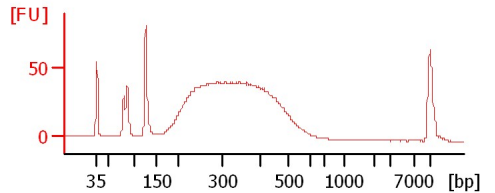
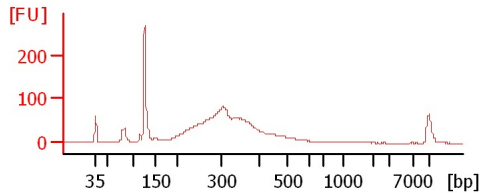
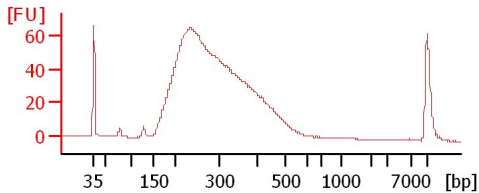
sample 3



sample 4 1:7

sample 5

sample 6



Assay Class: High Sensitivity DNA Assay  
 Data Path: C:\...Settings\Bioanalyzer\2013-09-17\2013-09-17\_001\_ChIP\_Lib.xad

Created: 9/17/2013 5:08:43 PM  
 Modified: 9/17/2013 5:56:14 PM

**Electrophoresis File Run Summary (Chip Summary)**

Sample Name	Sample Comment	Rest. Digest	Status	Observation	Result Label	Result Color
sample 1 1:3		<input type="checkbox"/>				
sample 2 1:3		<input type="checkbox"/>				
sample 3		<input type="checkbox"/>				
sample 4 1:7		<input type="checkbox"/>				
sample 5		<input type="checkbox"/>				
sample 6		<input type="checkbox"/>				
Ladder		<input type="checkbox"/>				

**Chip Lot #**

**Reagent Kit Lot #**

**Chip Comments :**

Assay Class: High Sensitivity DNA Assay  
Data Path: C:\...Settings\Bioanalyzer\2013-09-17\2013-09-17\_001\_ChIP\_Lib.xad

Created: 9/17/2013 5:08:43 PM  
Modified: 9/17/2013 5:56:14 PM

**Electrophoresis Assay Details**

**General Analysis Settings**

Number of Available Sample and Ladder Wells (Max.) : 12  
Minimum Visible Range [s] : 32  
Maximum Visible Range [s] : 138  
Start Analysis Time Range [s] : 33  
End Analysis Time Range [s] : 137.5  
Ladder Concentration [pg/μl] : 1950  
Uses Standard Area for Ladder Fragments  
Lower Marker Concentration [pg/μl] : 125  
Upper Marker Concentration [pg/μl] : 75  
Used Upper Marker for Quantitation  
Standard Curve Fit is Point to Point  
Show Data Aligned to Lower and Upper Marker

**Integrator Settings**

Integration Start Time [s] : 33.05  
Integration End Time [s] : 137  
Slope Threshold : 0.8  
Height Threshold [FU] : 5  
Area Threshold : 0.1  
Width Threshold [s] : 0.6  
Baseline Plateau [s] : 0.5

**Filter Settings**

Filter Width [s] : 0.5  
Polynomial Order : 4

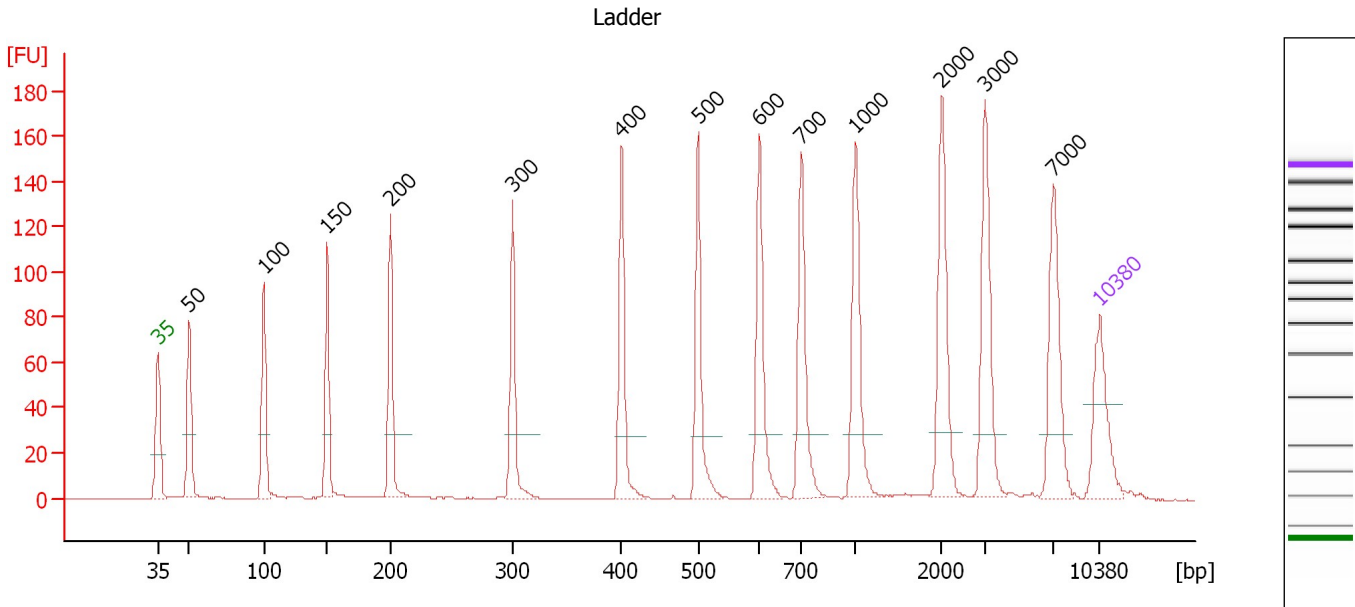
**Ladder**

Ladder Peak	Size	Area
1	35	160
2	50	210
3	100	208
4	150	221
5	200	242
6	300	270
7	400	305
8	500	306
9	600	336
10	700	321
11	1000	366
12	2000	413
13	3000	411
14	7000	400
15	10380	214

Assay Class: High Sensitivity DNA Assay  
 Data Path: C:\...Settings\Bioanalyzer\2013-09-17\2013-09-17\_001\_ChIP\_Lib.xad

Created: 9/17/2013 5:08:43 PM  
 Modified: 9/17/2013 5:56:14 PM

**Electropherogram Summary**



**Overall Results for Ladder**

Noise: 0.1

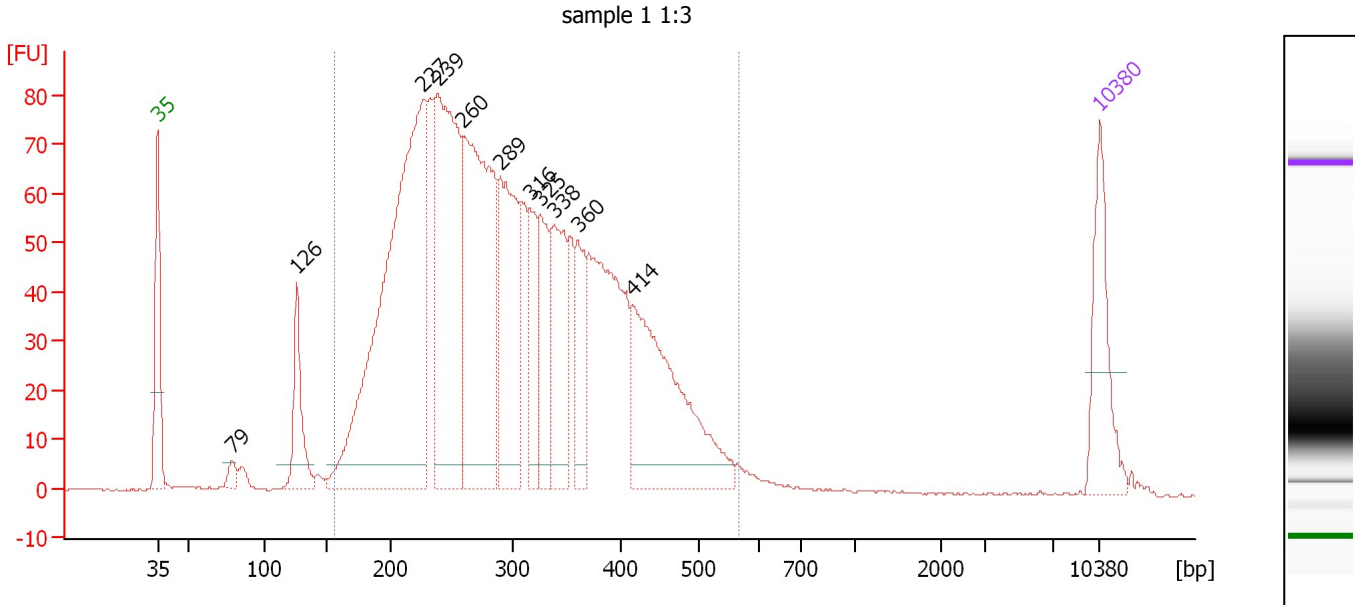
**Peak table for Ladder**

Peak	Size [bp]	Conc. [pg/μl]	Molarity [pmol/l]	Observations
1	35	125.00	5,411.3	Lower Marker
2	50	150.00	4,545.5	Ladder Peak
3	100	150.00	2,272.7	Ladder Peak
4	150	150.00	1,515.2	Ladder Peak
5	200	150.00	1,136.4	Ladder Peak
6	300	150.00	757.6	Ladder Peak
7	400	150.00	568.2	Ladder Peak
8	500	150.00	454.5	Ladder Peak
9	600	150.00	378.8	Ladder Peak
10	700	150.00	324.7	Ladder Peak
11	1,000	150.00	227.3	Ladder Peak
12	2,000	150.00	113.6	Ladder Peak
13	3,000	150.00	75.8	Ladder Peak
14	7,000	150.00	32.5	Ladder Peak
15	10,380	75.00	10.9	Upper Marker

Assay Class: High Sensitivity DNA Assay  
 Data Path: C:\...Settings\Bioanalyzer\2013-09-17\2013-09-17\_001\_ChIP\_Lib.xad

Created: 9/17/2013 5:08:43 PM  
 Modified: 9/17/2013 5:56:14 PM

**Electropherogram Summary Continued ...**



**Overall Results for sample 3 : sample 1 1:3**

Number of peaks found: 11                      Corr. Area 1: 1,951.9  
 Noise: 0.2

**Peak table for sample 3 : sample 1 1:3**

Peak	Size [bp]	Conc. [pg/μl]	Molarity [pmol/l]	Observations
1	35	125.00	5,411.3	Lower Marker
2	79	14.31	276.2	
3	126	92.68	1,116.2	
4	227	700.08	4,680.4	
5	239	387.34	2,458.0	
6	260	393.10	2,293.4	
7	289	213.04	1,115.2	
8	316	73.02	350.6	
9	325	95.44	445.1	
10	338	129.27	579.5	
11	360	74.96	315.7	
12	414	252.73	925.6	
13	10,380	75.00	10.9	Upper Marker

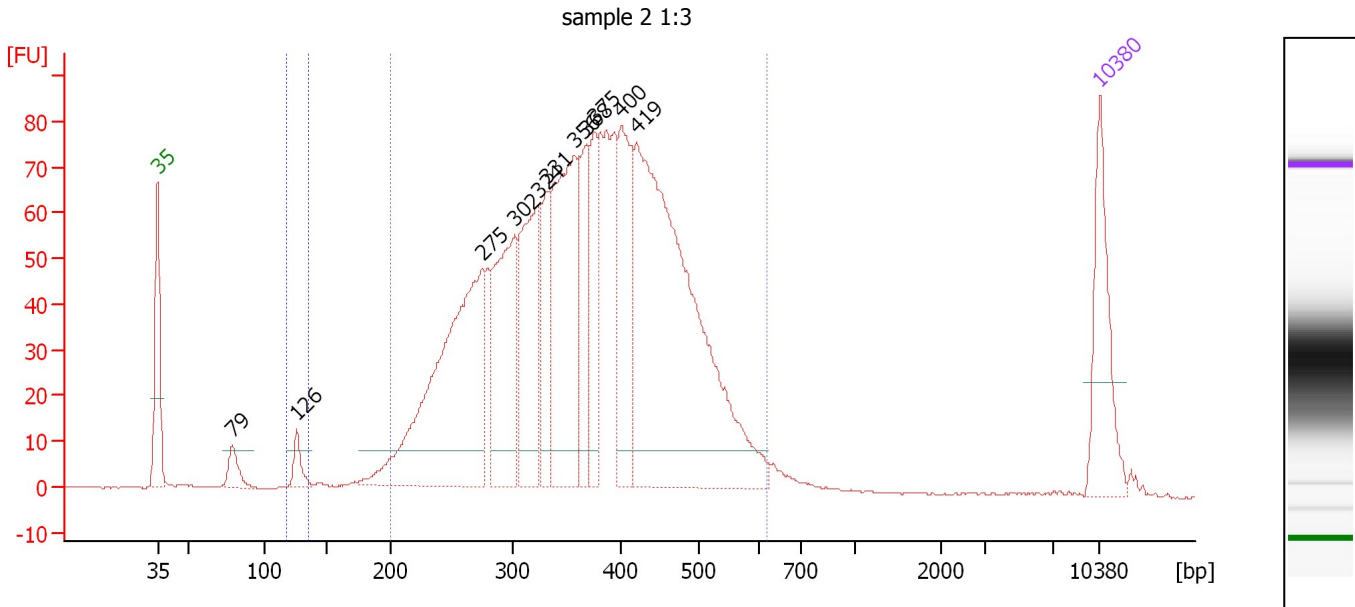
**Region table for sample 3 : sample 1 1:3**

From [bp]	To [bp]	Average Size [bp]	Molarity [pmol/l]	Conc. [pg/μl]	Corr. Area	% of Total	Size distribution in CV [%]	Color
156	567	304	15,556.9	2,817.14	1,951.9	95	27.7	Blue

Assay Class: High Sensitivity DNA Assay  
 Data Path: C:\...Settings\Bioanalyzer\2013-09-17\2013-09-17\_001\_ChIP\_Lib.xad

Created: 9/17/2013 5:08:43 PM  
 Modified: 9/17/2013 5:56:14 PM

**Electropherogram Summary Continued ...**



**Setpoint Deviations for sample 4 : sample 2 1:3**

Height Threshold [FU] : 8

**Overall Results for sample 4 : sample 2 1:3**

Number of peaks found: 11      Corr. Area 1: 1,786.8  
 Noise: 0.1      Corr. Area 2: 15.5

**Peak table for sample 4 : sample 2 1:3**

Peak	Size [bp]	Conc. [pg/μl]	Molarity [pmol/l]	Observations
1	35	125.00	5,411.3	Lower Marker
2	79	25.53	489.7	
3	126	22.69	273.5	
4	275	371.47	2,045.8	
5	302	179.07	899.3	
6	324	157.72	737.7	
7	331	71.02	325.1	
8	356	227.77	968.4	
9	368	75.51	311.1	
10	375	76.95	310.5	
11	400	118.27	447.7	
12	419	543.40	1,964.1	
13	10,380	75.00	10.9	Upper Marker

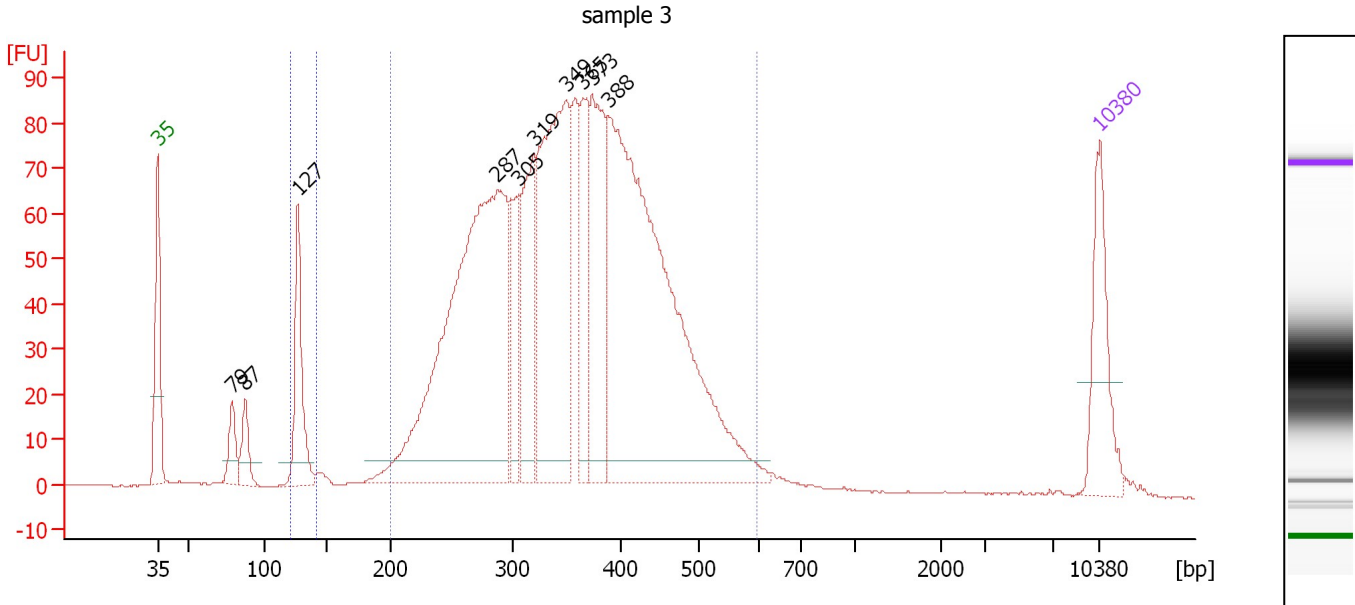
**Region table for sample 4 : sample 2 1:3**

From [bp]	To [bp]	Average Size [bp]	Molarity [pmol/l]	Conc. [pg/μl]	Corr. Area	% of Total	Size distribution in CV [%]	Color
118	136	127	290.5	24.30	15.5	1	2.6	Blue
200	616	372	9,298.6	2,110.65	1,786.8	95	22.9	Dark Blue

Assay Class: High Sensitivity DNA Assay  
 Data Path: C:\...Settings\Bioanalyzer\2013-09-17\2013-09-17\_001\_ChIP\_Lib.xad

Created: 9/17/2013 5:08:43 PM  
 Modified: 9/17/2013 5:56:14 PM

**Electropherogram Summary Continued ...**



**Overall Results for sample 5 : sample 3**

Number of peaks found: 10                      Corr. Area 1: 1,849.1  
 Noise: 0.1                                      Corr. Area 2: 68.7

**Peak table for sample 5 : sample 3**

Peak	Size [bp]	Conc. [pg/μl]	Molarity [pmol/l]	Observations
1	35	125.00	5,411.3	Lower Marker
2	79	39.56	760.0	
3	87	41.49	719.8	
4	127	118.19	1,410.6	
5	287	679.83	3,583.6	
6	305	83.21	413.2	
7	319	146.86	696.7	
8	349	356.01	1,545.2	
9	365	97.02	402.5	
10	373	187.77	762.8	
11	388	696.89	2,722.6	
12	10,380	75.00	10.9	Upper Marker

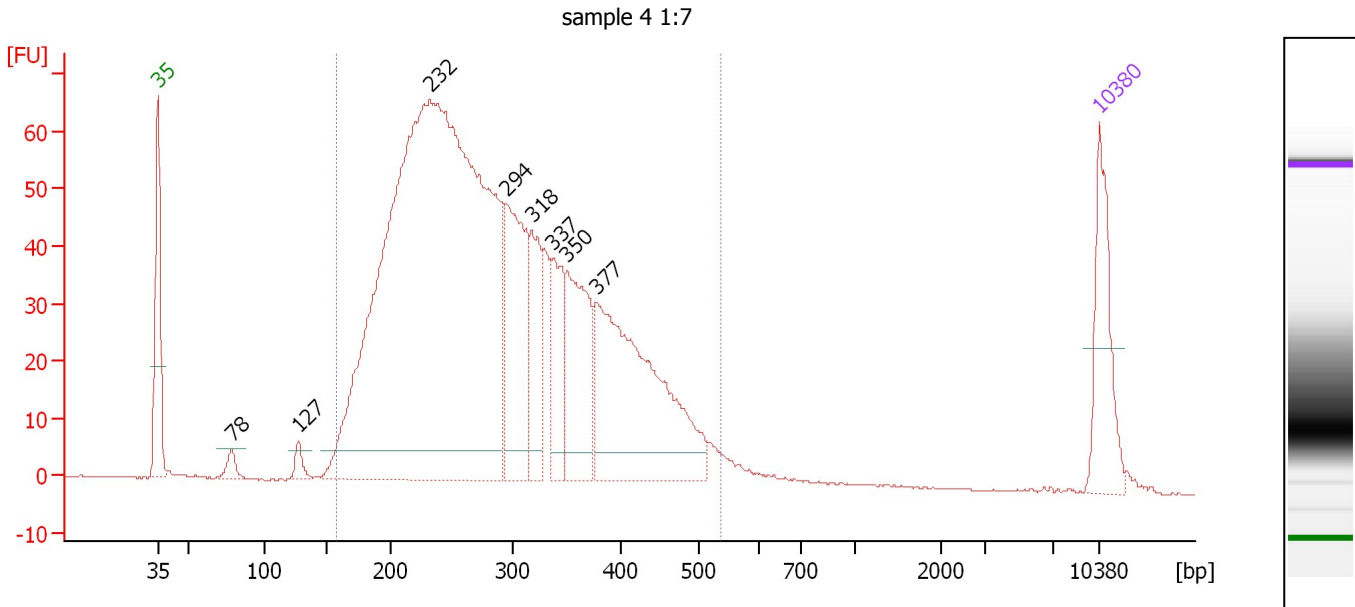
**Region table for sample 5 : sample 3**

From [bp]	To [bp]	Average Size [bp]	Molarity [pmol/l]	Conc. [pg/μl]	Corr. Area	% of Total	Size distribution in CV [%]	Color
120	141	128	1,409.8	119.14	68.7	3	2.9	Blue
200	595	358	11,037.0	2,436.19	1,849.1	92	21.7	Dark Blue

Assay Class: High Sensitivity DNA Assay  
 Data Path: C:\...Settings\Bioanalyzer\2013-09-17\2013-09-17\_001\_ChIP\_Lib.xad

Created: 9/17/2013 5:08:43 PM  
 Modified: 9/17/2013 5:56:14 PM

**Electropherogram Summary Continued ...**



**Overall Results for sample 6 : sample 4 1:7**

Number of peaks found: 8                      Corr. Area 1: 1,512.9  
 Noise: 0.1

**Peak table for sample 6 : sample 4 1:7**

Peak	Size [bp]	Conc. [pg/μl]	Molarity [pmol/l]	Observations
1	35	125.00	5,411.3	Lower Marker
2	78	17.07	329.7	
3	127	16.53	197.2	
4	232	1,627.81	10,626.6	
5	294	184.72	950.8	
6	318	90.46	431.3	
7	337	81.30	365.1	
8	350	146.02	632.5	
9	377	327.89	1,319.4	
10	10,380	75.00	10.9	Upper Marker

**Region table for sample 6 : sample 4 1:7**

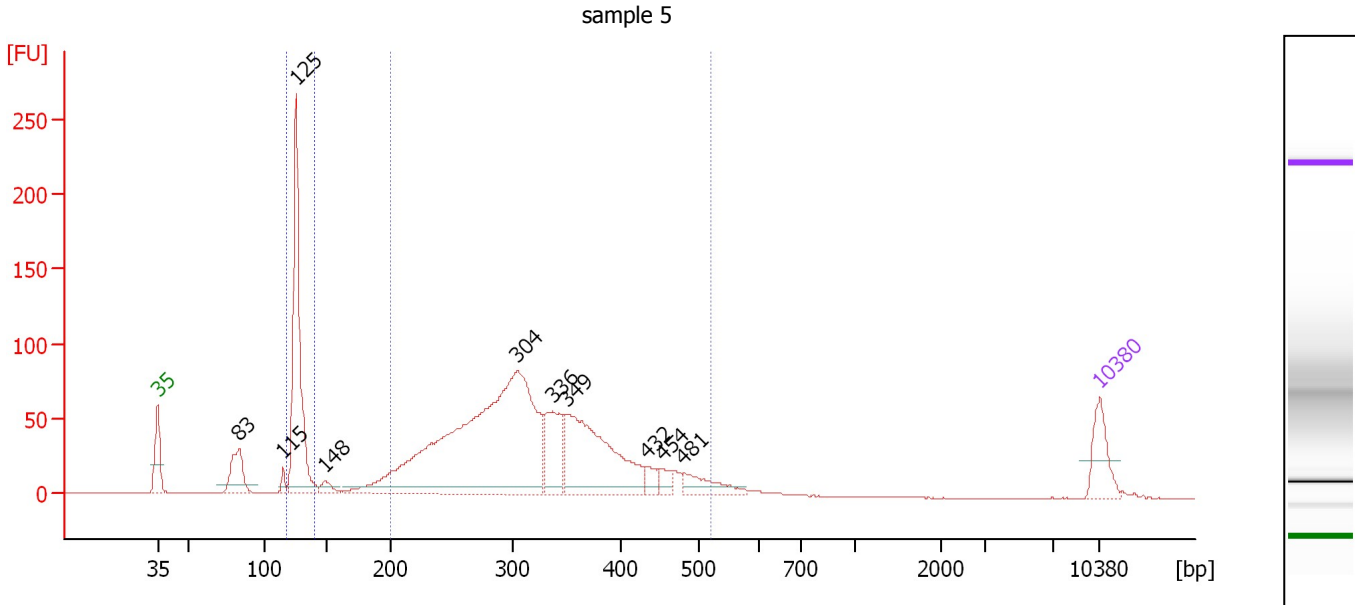
From [bp]	To [bp]	Average Size [bp]	Molarity [pmol/l]	Conc. [pg/μl]	Corr. Area	% of Total	Size distribution in CV [%]	Color
158	539	293	14,693.6	2,571.41	1,512.9	96	27.7	Blue



Assay Class: High Sensitivity DNA Assay  
 Data Path: C:\...Settings\Bioanalyzer\2013-09-17\2013-09-17\_001\_ChIP\_Lib.xad

Created: 9/17/2013 5:08:43 PM  
 Modified: 9/17/2013 5:56:14 PM

**Electropherogram Summary Continued ...**



**Overall Results for sample 7 : sample 5**

Number of peaks found: 10                      Corr. Area 1: 1,279.3  
 Noise: 0.1    Corr. Area 2: 279.3

**Peak table for sample 7 : sample 5**

Peak	Size [bp]	Conc. [pg/μl]	Molarity [pmol/l]	Observations
1	35	125.00	5,411.3	Lower Marker
2	83	128.11	2,333.3	
3	115	20.10	264.0	
4	125	585.57	7,099.0	
5	148	28.44	290.8	
6	304	1,299.47	6,477.9	
7	336	168.00	756.5	
8	349	445.22	1,932.3	
9	432	33.61	117.8	
10	454	29.00	96.8	
11	481	74.90	235.8	
12	10,380	75.00	10.9	Upper Marker

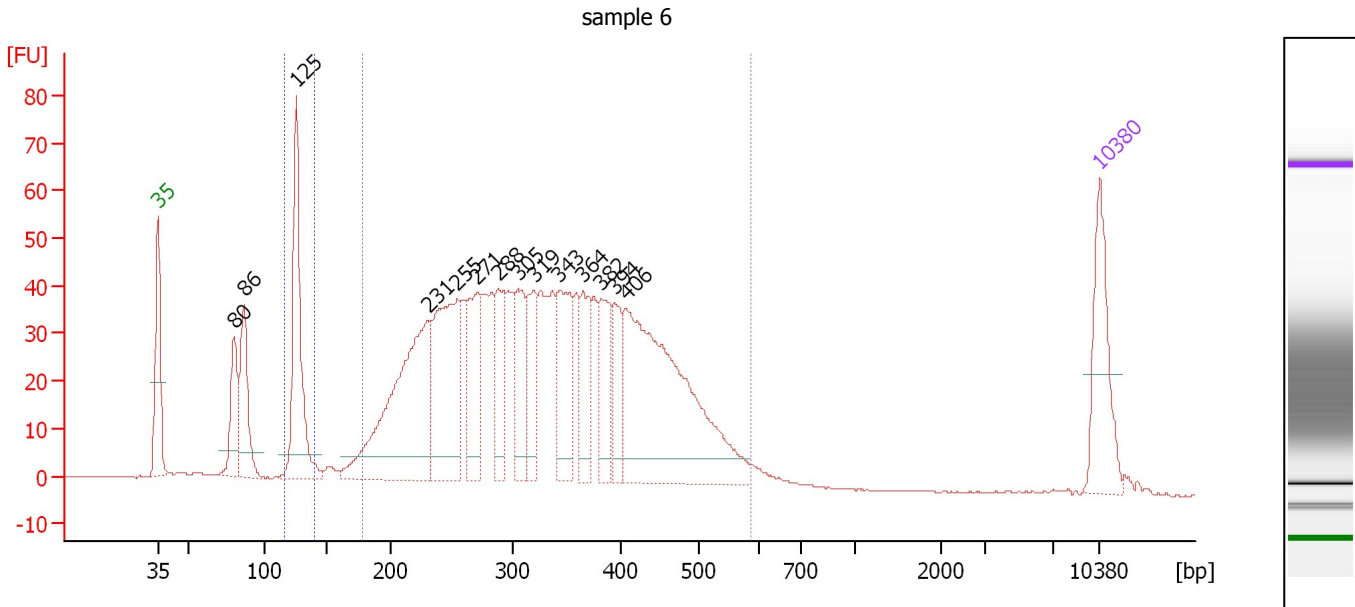
**Region table for sample 7 : sample 5**

From [bp]	To [bp]	Average Size [bp]	Molarity [pmol/l]	Conc. [pg/μl]	Corr. Area	% of Total	Size distribution in CV [%]	Color
118	140	126	6,945.9	579.39	279.3	16	2.7	Blue
200	521	321	10,359.7	2,079.63	1,279.3	74	21.0	Dark Blue

Assay Class: High Sensitivity DNA Assay  
 Data Path: C:\...Settings\Bioanalyzer\2013-09-17\2013-09-17\_001\_ChIP\_Lib.xad

Created: 9/17/2013 5:08:43 PM  
 Modified: 9/17/2013 5:56:14 PM

**Electropherogram Summary Continued ...**



**Overall Results for sample 8 : sample 6**

Number of peaks found: 14                      Corr. Area 1: 1,194.0  
 Noise: 0.1    Corr. Area 2: 93.4

**Peak table for sample 8 : sample 6**

Peak	Size [bp]	Conc. [pg/μl]	Molarity [pmol/l]	Observations
1	35	125.00	5,411.3	Lower Marker
2	80	72.10	1,364.8	
3	86	96.13	1,686.8	
4	125	198.51	2,397.0	
5	231	298.50	1,961.7	
6	255	209.06	1,243.6	
7	271	109.64	613.8	
8	288	67.18	353.7	
9	305	88.96	442.2	
10	319	66.67	316.2	
11	343	104.00	459.6	
12	364	59.55	247.7	
13	382	71.47	283.8	
14	394	48.87	188.1	
15	406	362.18	1,351.7	
16	10,380	75.00	10.9	Upper Marker

**Region table for sample 8 : sample 6**

From [bp]	To [bp]	Average Size [bp]	Molarity [pmol/l]	Conc. [pg/μl]	Corr. Area	% of Total	Size distribution in CV [%]	Color
115	139	126	2,343.6	195.63	93.4	7	3.0	Blue
177	588	337	9,690.8	1,946.97	1,194.0	84	26.5	Dark Blue

Assay Class: High Sensitivity DNA Assay  
Data Path: C:\...Settings\Bioanalyzer\2013-09-17\2013-09-17\_001\_ChIP\_Lib.xad

Created: 9/17/2013 5:08:43 PM  
Modified: 9/17/2013 5:56:14 PM

**Gel Image**

