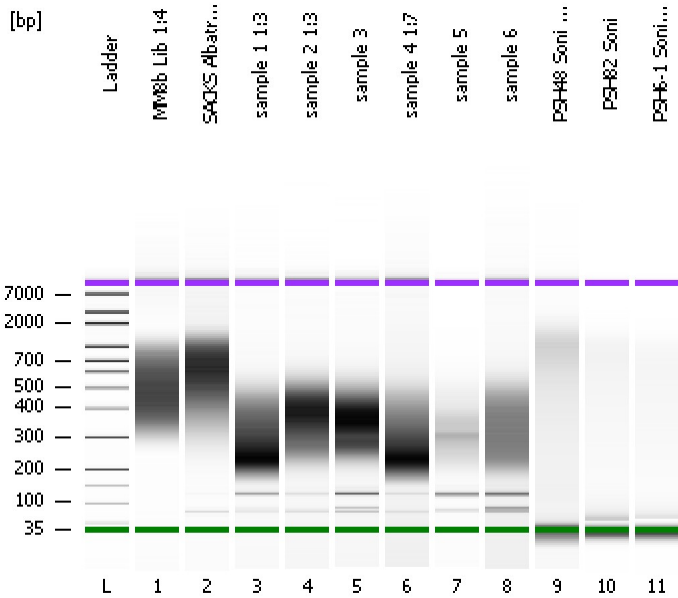


Assay Class: High Sensitivity DNA Assay  
Data Path: C:\...ents and Settings\Bioanalyzer\2013-09-17\2013-09-17\_001.xad

Created: 9/17/2013 5:08:43 PM  
Modified: 9/17/2013 5:53:20 PM

**Electrophoresis File Run Summary**



Instrument Information:

Instrument Name: DE13701086      Firmware: C.01.069  
Serial#: DE13701086      Type: G2938B

Assay Information:

Assay Origin Path: C:\Program Files\Agilent\2100 bioanalyzer\2100 expert\assays\dsDNA\High Sensitivity DNA.xsy  
Assay Class: High Sensitivity DNA Assay  
Version: 1.03  
Assay Comments: Copyright © 2003-2010 Agilent Technologies

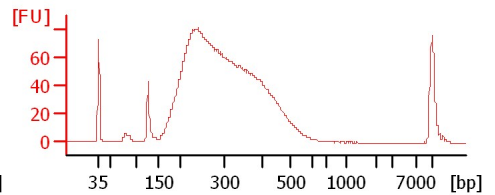
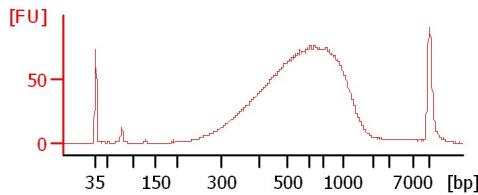
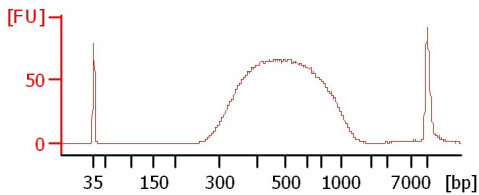
Chip Information:

Chip Lot #:   
Reagent Kit Lot #:   
Chip Comments:

**MM8b Lib 1:4**

**SACKS Albatross 2 Lib 1:3**

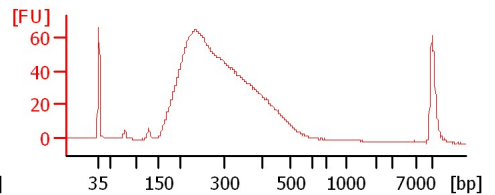
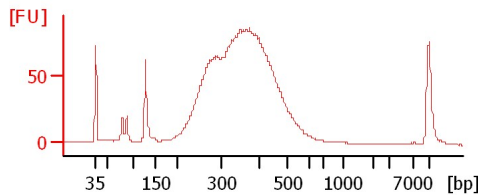
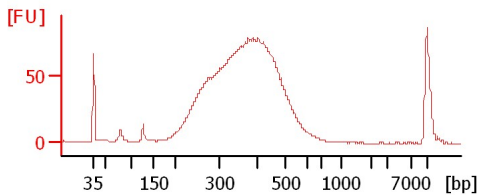
**sample 1 1:3**



**sample 2 1:3**

**sample 3**

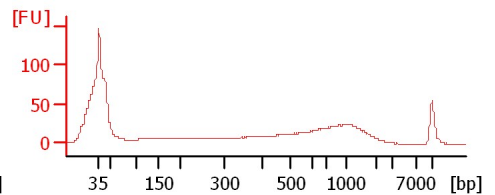
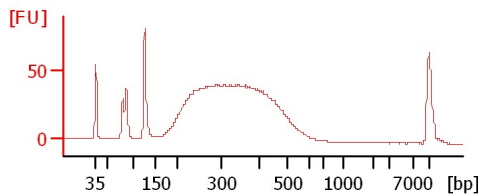
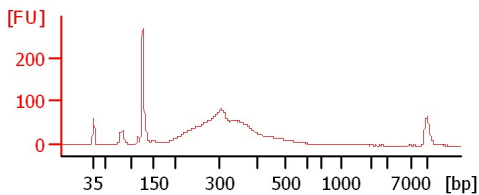
**sample 4 1:7**



**sample 5**

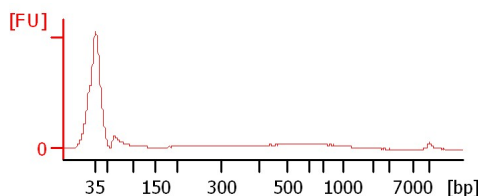
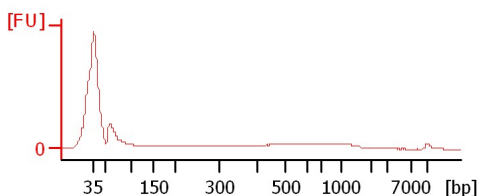
**sample 6**

**PSH48 Soni 1:4**



**PSH82 Soni**

**PSH6-1 Soni 1:2**



Assay Class: High Sensitivity DNA Assay  
Data Path: C:\...ents and Settings\Bioanalyzer\2013-09-17\2013-09-17\_001.xad

Created: 9/17/2013 5:08:43 PM  
Modified: 9/17/2013 5:53:20 PM

**Electrophoresis File Run Summary (Chip Summary)**

Sample Name	Sample Comment	Rest. Digest	Status	Observation	Result Label	Result Color
MM8b Lib 1:4		<input type="checkbox"/>	✓			
SACKS Albatross 2 Lib 1:3		<input type="checkbox"/>	✓			
sample 1 1:3		<input type="checkbox"/>	✓			
sample 2 1:3		<input type="checkbox"/>	✓			
sample 3		<input type="checkbox"/>	✓			
sample 4 1:7		<input type="checkbox"/>	✓			
sample 5		<input type="checkbox"/>	✓			
sample 6		<input type="checkbox"/>	✓			
PSH48 Soni 1:4		<input type="checkbox"/>	✓			
PSH82 Soni		<input type="checkbox"/>	✓			
PSH6-1 Soni 1:2		<input type="checkbox"/>	✓			
Ladder		<input type="checkbox"/>	✓			

**Chip Lot #**

**Reagent Kit Lot #**

**Chip Comments :**

Assay Class: High Sensitivity DNA Assay  
Data Path: C:\...ents and Settings\Bioanalyzer\2013-09-17\2013-09-17\_001.xad

Created: 9/17/2013 5:08:43 PM  
Modified: 9/17/2013 5:53:20 PM

**Electrophoresis Assay Details**

**General Analysis Settings**

Number of Available Sample and Ladder Wells (Max.) : 12  
Minimum Visible Range [s] : 32  
Maximum Visible Range [s] : 138  
Start Analysis Time Range [s] : 33  
End Analysis Time Range [s] : 137.5  
Ladder Concentration [pg/μl] : 1950  
Uses Standard Area for Ladder Fragments  
Lower Marker Concentration [pg/μl] : 125  
Upper Marker Concentration [pg/μl] : 75  
Used Upper Marker for Quantitation  
Standard Curve Fit is Point to Point  
Show Data Aligned to Lower and Upper Marker

**Integrator Settings**

Integration Start Time [s] : 33.05  
Integration End Time [s] : 137  
Slope Threshold : 0.8  
Height Threshold [FU] : 5  
Area Threshold : 0.1  
Width Threshold [s] : 0.6  
Baseline Plateau [s] : 0.5

**Filter Settings**

Filter Width [s] : 0.5  
Polynomial Order : 4

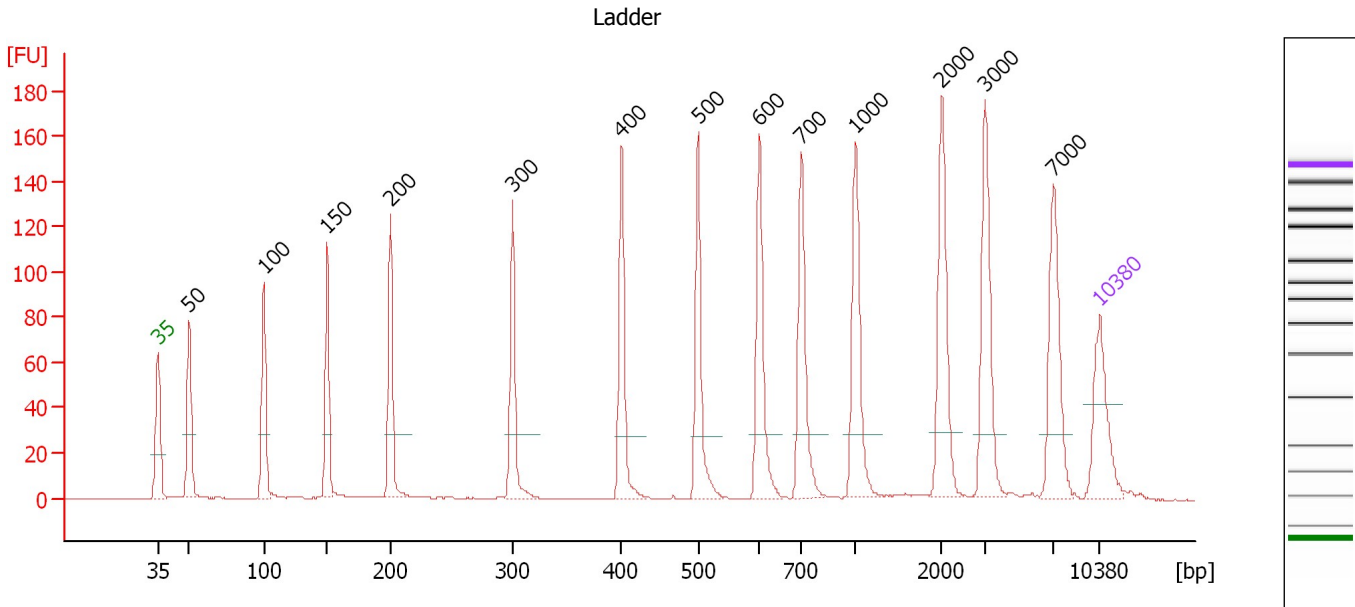
**Ladder**

Ladder Peak	Size	Area
1	35	160
2	50	210
3	100	208
4	150	221
5	200	242
6	300	270
7	400	305
8	500	306
9	600	336
10	700	321
11	1000	366
12	2000	413
13	3000	411
14	7000	400
15	10380	214

Assay Class: High Sensitivity DNA Assay  
 Data Path: C:\...ents and Settings\Bioanalyzer\2013-09-17\2013-09-17\_001.xad

Created: 9/17/2013 5:08:43 PM  
 Modified: 9/17/2013 5:53:20 PM

**Electropherogram Summary**



**Overall Results for Ladder**

Noise: 0.1

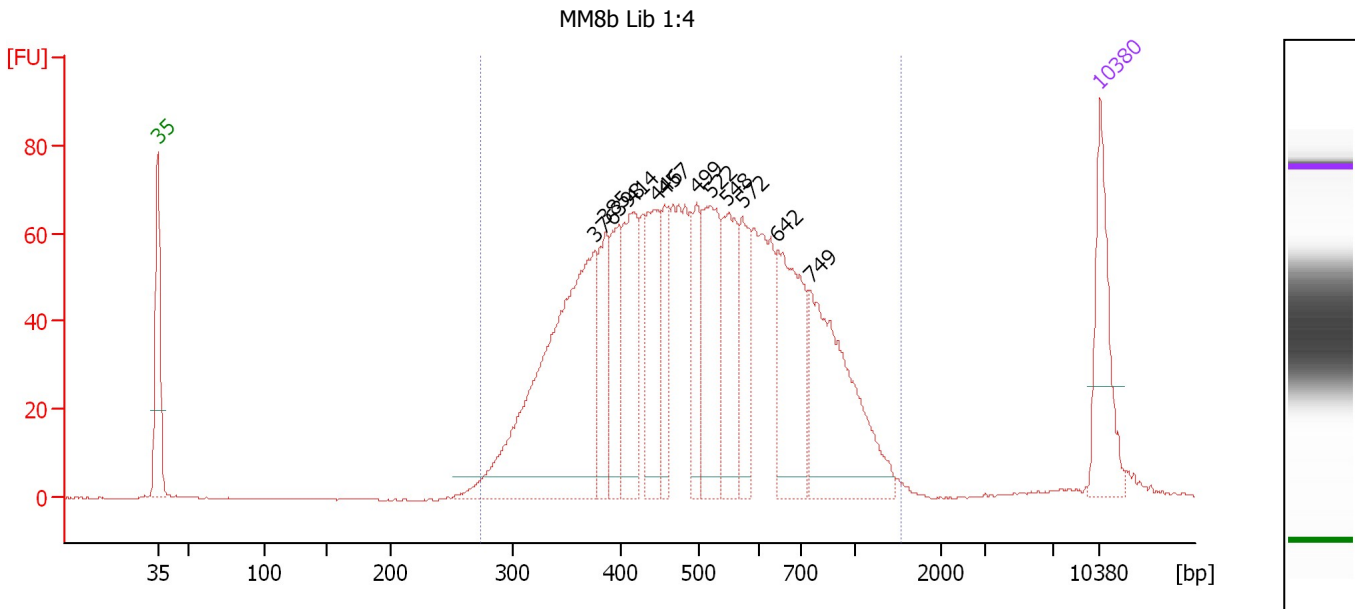
**Peak table for Ladder**

Peak	Size [bp]	Conc. [pg/μl]	Molarity [pmol/l]	Observations
1	35	125.00	5,411.3	Lower Marker
2	50	150.00	4,545.5	Ladder Peak
3	100	150.00	2,272.7	Ladder Peak
4	150	150.00	1,515.2	Ladder Peak
5	200	150.00	1,136.4	Ladder Peak
6	300	150.00	757.6	Ladder Peak
7	400	150.00	568.2	Ladder Peak
8	500	150.00	454.5	Ladder Peak
9	600	150.00	378.8	Ladder Peak
10	700	150.00	324.7	Ladder Peak
11	1,000	150.00	227.3	Ladder Peak
12	2,000	150.00	113.6	Ladder Peak
13	3,000	150.00	75.8	Ladder Peak
14	7,000	150.00	32.5	Ladder Peak
15	10,380	75.00	10.9	Upper Marker

Assay Class: High Sensitivity DNA Assay  
 Data Path: C:\...ents and Settings\Bioanalyzer\2013-09-17\2013-09-17\_001.xad

Created: 9/17/2013 5:08:43 PM  
 Modified: 9/17/2013 5:53:20 PM

**Electropherogram Summary Continued ...**



**Overall Results for sample 1 : MM8b Lib 1:4**

Number of peaks found: 12      Corr. Area 1: 1,736.1  
 Noise: 0.1

**Peak table for sample 1 : MM8b Lib 1:4**

Peak	Size [bp]	Conc. [pg/μl]	Molarity [pmol/l]	Observations
1	35	125.00	5,411.3	Lower Marker
2	376	431.46	1,740.9	
3	385	76.41	300.6	
4	398	82.43	313.9	
5	414	131.46	481.1	
6	446	112.57	382.8	
7	457	61.32	203.4	
8	499	77.21	234.7	
9	522	131.50	382.0	
10	548	106.38	294.1	
11	572	73.43	194.3	
12	642	149.11	352.0	
13	749	206.15	416.9	
14	10,380	75.00	10.9	Upper Marker

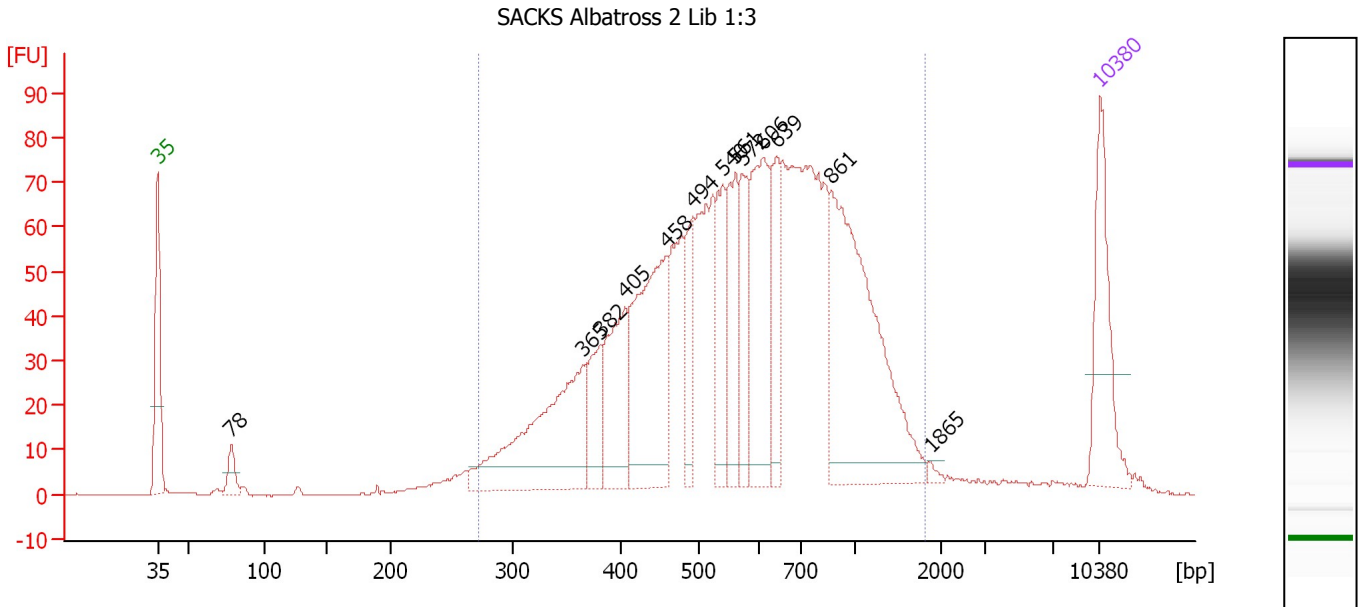
**Region table for sample 1 : MM8b Lib 1:4**

From [bp]	To [bp]	Average Size [bp]	Molarity [pmol/l]	Conc. [pg/μl]	Corr. Area	% of Total	Size distribution in CV [%]	Color
274	1,528	537	6,468.6	1,996.12	1,736.1	97	36.2	Blue

Assay Class: High Sensitivity DNA Assay  
 Data Path: C:\...ents and Settings\Bioanalyzer\2013-09-17\2013-09-17\_001.xad

Created: 9/17/2013 5:08:43 PM  
 Modified: 9/17/2013 5:53:20 PM

**Electropherogram Summary Continued ...**



**Overall Results for sample 2 : SACKS Albatross 2 Lib 1:3**

Number of peaks found: 13      Corr. Area 1: 1,774.0  
 Noise: 0.1

**Peak table for sample 2 : SACKS Albatross 2 Lib 1:3**

Peak	Size [bp]	Conc. [pg/μl]	Molarity [pmol/l]	Observations
1	35	125.00	5,411.3	Lower Marker
2	78	23.24	450.9	
3	365	205.63	853.1	
4	382	53.22	211.2	
5	405	103.64	388.2	
6	458	194.42	642.8	
7	494	55.89	171.5	
8	540	67.75	190.2	
9	561	80.20	216.5	
10	572	59.24	156.9	
11	606	138.41	345.8	
12	639	59.83	141.7	
13	861	276.85	487.1	
14	1,865	3.49	2.8	
15	10,380	75.00	10.9	Upper Marker

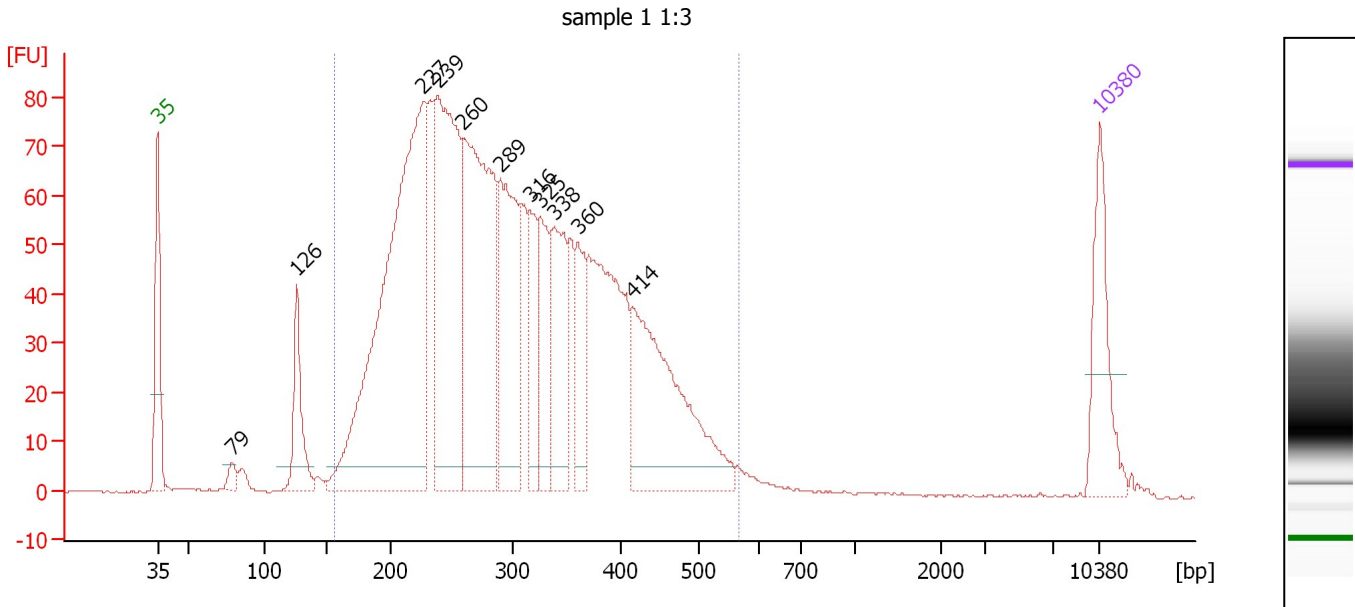
**Region table for sample 2 : SACKS Albatross 2 Lib 1:3**

From [bp]	To [bp]	Average Size [bp]	Molarity [pmol/l]	Conc. [pg/μl]	Corr. Area	% of Total	Size distribution in CV [%]	Color
272	1,804	646	5,526.4	1,930.20	1,774.0	93	43.2	Blue

Assay Class: High Sensitivity DNA Assay  
 Data Path: C:\...ents and Settings\Bioanalyzer\2013-09-17\2013-09-17\_001.xad

Created: 9/17/2013 5:08:43 PM  
 Modified: 9/17/2013 5:53:20 PM

**Electropherogram Summary Continued ...**



**Overall Results for sample 3 : sample 1 1:3**

Number of peaks found: 11                      Corr. Area 1: 1,951.9  
 Noise: 0.2

**Peak table for sample 3 : sample 1 1:3**

Peak	Size [bp]	Conc. [pg/μl]	Molarity [pmol/l]	Observations
1	35	125.00	5,411.3	Lower Marker
2	79	14.31	276.2	
3	126	92.68	1,116.2	
4	227	700.08	4,680.4	
5	239	387.34	2,458.0	
6	260	393.10	2,293.4	
7	289	213.04	1,115.2	
8	316	73.02	350.6	
9	325	95.44	445.1	
10	338	129.27	579.5	
11	360	74.96	315.7	
12	414	252.73	925.6	
13	10,380	75.00	10.9	Upper Marker

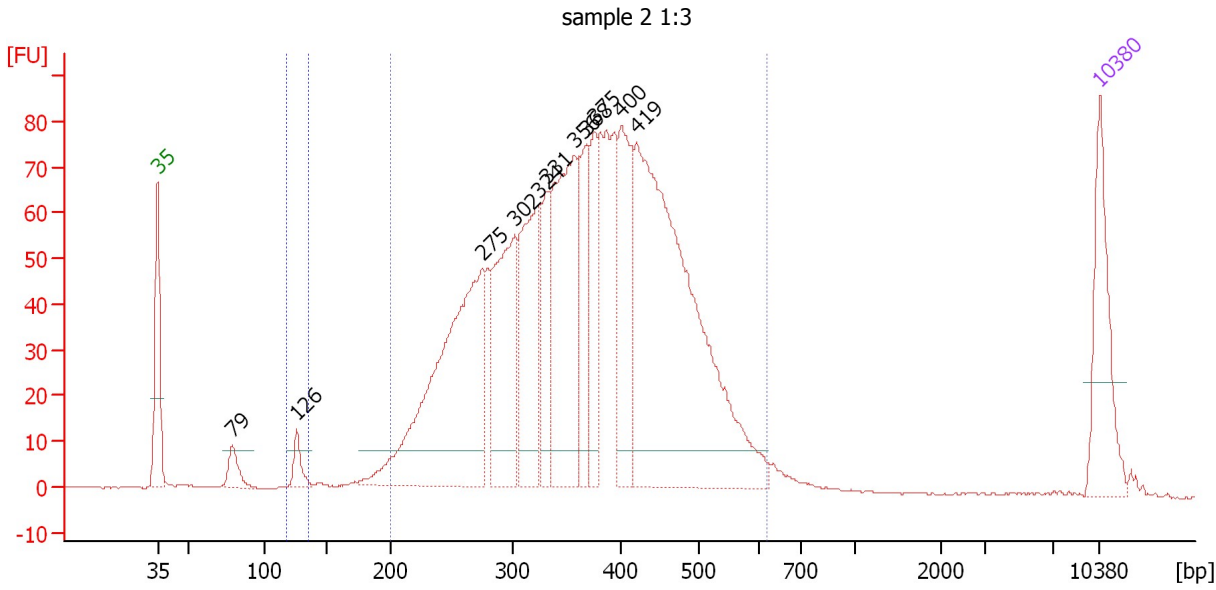
**Region table for sample 3 : sample 1 1:3**

From [bp]	To [bp]	Average Size [bp]	Molarity [pmol/l]	Conc. [pg/μl]	Corr. Area	% of Total	Size distribution in CV [%]	Color
156	567	304	15,556.9	2,817.14	1,951.9	95	27.7	Blue

Assay Class: High Sensitivity DNA Assay  
 Data Path: C:\...ents and Settings\Bioanalyzer\2013-09-17\2013-09-17\_001.xad

Created: 9/17/2013 5:08:43 PM  
 Modified: 9/17/2013 5:53:20 PM

**Electropherogram Summary Continued ...**



**Setpoint Deviations for sample 4 : sample 2 1:3**

Height Threshold [FU] : 8

**Overall Results for sample 4 : sample 2 1:3**

Number of peaks found: 11      Corr. Area 1: 1,786.8  
 Noise: 0.1      Corr. Area 2: 15.5

**Peak table for sample 4 : sample 2 1:3**

Peak	Size [bp]	Conc. [pg/μl]	Molarity [pmol/l]	Observations
1	35	125.00	5,411.3	Lower Marker
2	79	25.53	489.7	
3	126	22.69	273.5	
4	275	371.47	2,045.8	
5	302	179.07	899.3	
6	324	157.72	737.7	
7	331	71.02	325.1	
8	356	227.77	968.4	
9	368	75.51	311.1	
10	375	76.95	310.5	
11	400	118.27	447.7	
12	419	543.40	1,964.1	
13	10,380	75.00	10.9	Upper Marker

**Region table for sample 4 : sample 2 1:3**

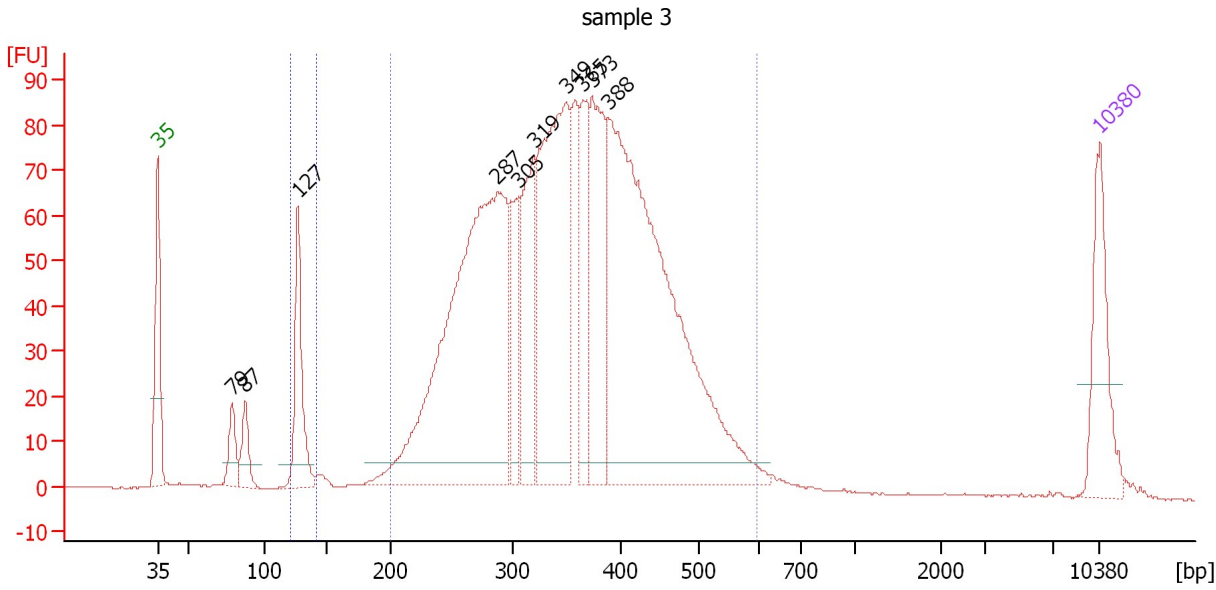
From [bp]	To [bp]	Average Size [bp]	Molarity [pmol/l]	Conc. [pg/μl]	Corr. Area	% of Total	Size distribution in CV [%]	Color
118	136	127	290.5	24.30	15.5	1	2.6	Blue
200	616	372	9,298.6	2,110.65	1,786.8	95	22.9	Dark Blue



Assay Class: High Sensitivity DNA Assay  
 Data Path: C:\...ents and Settings\Bioanalyzer\2013-09-17\2013-09-17\_001.xad

Created: 9/17/2013 5:08:43 PM  
 Modified: 9/17/2013 5:53:20 PM

**Electropherogram Summary Continued ...**



**Overall Results for sample 5 : sample 3**

Number of peaks found: 10      Corr. Area 1: 1,849.1  
 Noise: 0.1      Corr. Area 2: 68.7

**Peak table for sample 5 : sample 3**

Peak	Size [bp]	Conc. [pg/μl]	Molarity [pmol/l]	Observations
1	35	125.00	5,411.3	Lower Marker
2	79	39.56	760.0	
3	87	41.49	719.8	
4	127	118.19	1,410.6	
5	287	679.83	3,583.6	
6	305	83.21	413.2	
7	319	146.86	696.7	
8	349	356.01	1,545.2	
9	365	97.02	402.5	
10	373	187.77	762.8	
11	388	696.89	2,722.6	
12	10,380	75.00	10.9	Upper Marker

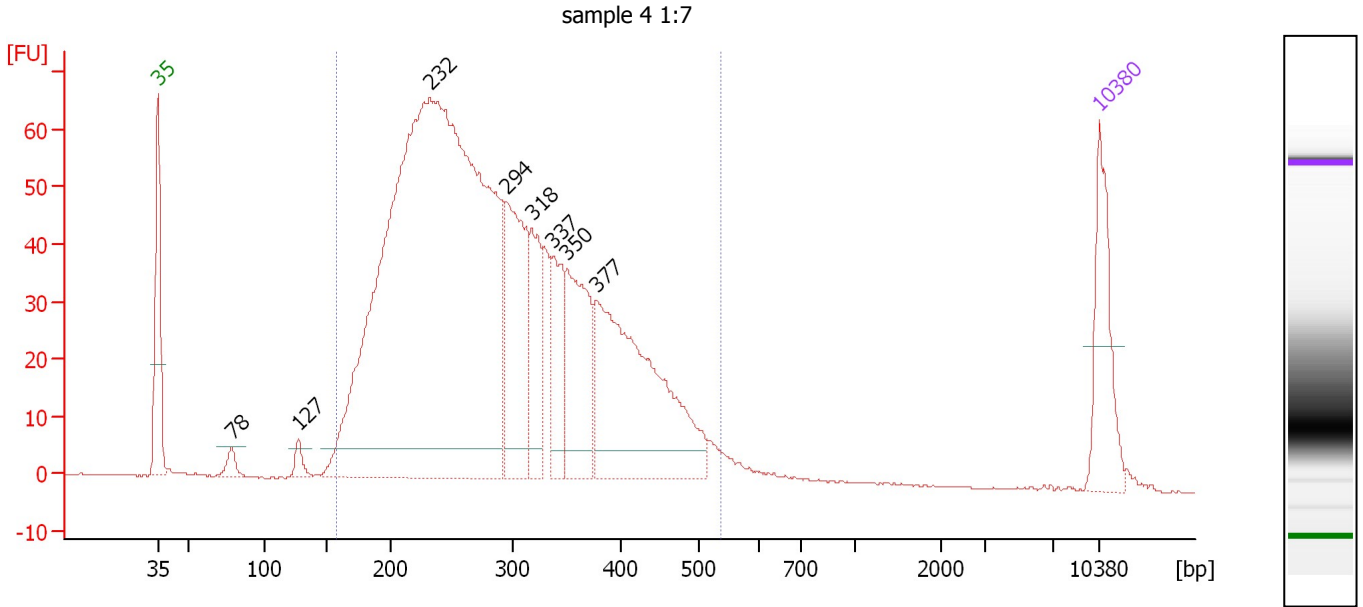
**Region table for sample 5 : sample 3**

From [bp]	To [bp]	Average Size [bp]	Molarity [pmol/l]	Conc. [pg/μl]	Corr. Area	% of Total	Size distribution in CV [%]	Color
120	141	128	1,409.8	119.14	68.7	3	2.9	Blue
200	595	358	11,037.0	2,436.19	1,849.1	92	21.7	Dark Blue

Assay Class: High Sensitivity DNA Assay  
 Data Path: C:\...ents and Settings\Bioanalyzer\2013-09-17\2013-09-17\_001.xad

Created: 9/17/2013 5:08:43 PM  
 Modified: 9/17/2013 5:53:20 PM

**Electropherogram Summary Continued ...**



**Overall Results for sample 6 : sample 4 1:7**

Number of peaks found: 8                      Corr. Area 1: 1,512.9  
 Noise: 0.1

**Peak table for sample 6 : sample 4 1:7**

Peak	Size [bp]	Conc. [pg/μl]	Molarity [pmol/l]	Observations
1	35	125.00	5,411.3	Lower Marker
2	78	17.07	329.7	
3	127	16.53	197.2	
4	232	1,627.81	10,626.6	
5	294	184.72	950.8	
6	318	90.46	431.3	
7	337	81.30	365.1	
8	350	146.02	632.5	
9	377	327.89	1,319.4	
10	10,380	75.00	10.9	Upper Marker

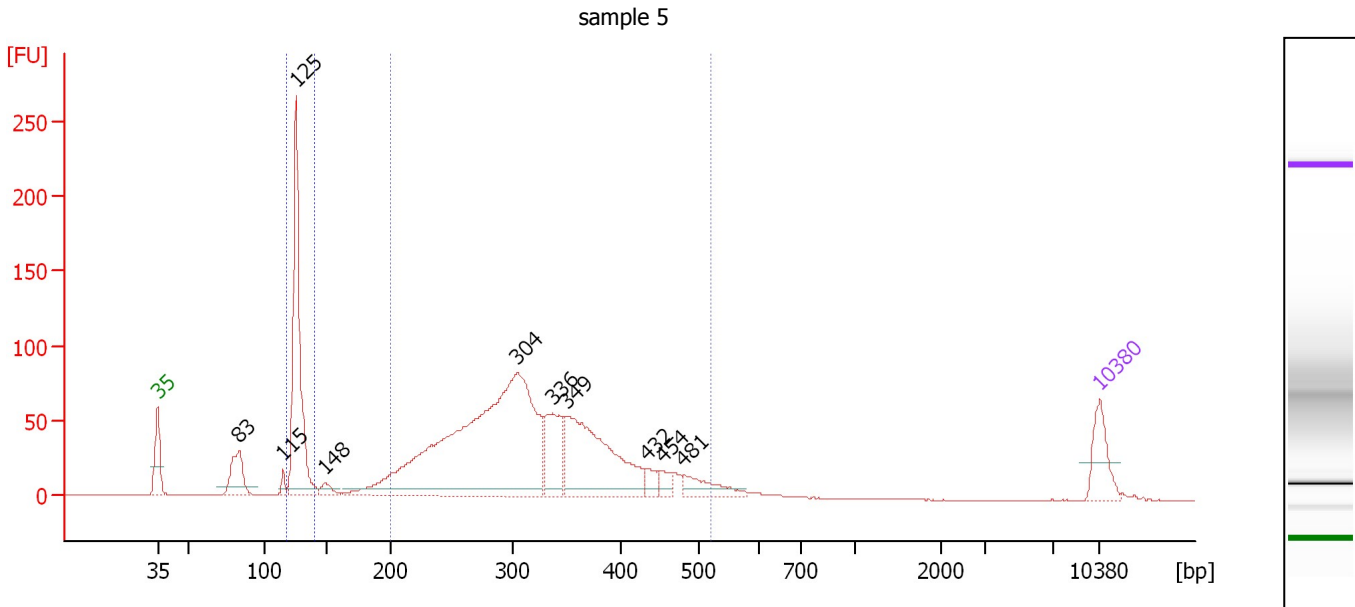
**Region table for sample 6 : sample 4 1:7**

From [bp]	To [bp]	Average Size [bp]	Molarity [pmol/l]	Conc. [pg/μl]	Corr. Area	% of Total	Size distribution in CV [%]	Color
158	539	293	14,693.6	2,571.41	1,512.9	96	27.7	Blue

Assay Class: High Sensitivity DNA Assay  
 Data Path: C:\...ents and Settings\Bioanalyzer\2013-09-17\2013-09-17\_001.xad

Created: 9/17/2013 5:08:43 PM  
 Modified: 9/17/2013 5:53:20 PM

**Electropherogram Summary Continued ...**



**Overall Results for sample 7 : sample 5**

Number of peaks found: 10      Corr. Area 1: 1,279.3  
 Noise: 0.1      Corr. Area 2: 279.3

**Peak table for sample 7 : sample 5**

Peak	Size [bp]	Conc. [pg/μl]	Molarity [pmol/l]	Observations
1	35	125.00	5,411.3	Lower Marker
2	83	128.11	2,333.3	
3	115	20.10	264.0	
4	125	585.57	7,099.0	
5	148	28.44	290.8	
6	304	1,299.47	6,477.9	
7	336	168.00	756.5	
8	349	445.22	1,932.3	
9	432	33.61	117.8	
10	454	29.00	96.8	
11	481	74.90	235.8	
12	10,380	75.00	10.9	Upper Marker

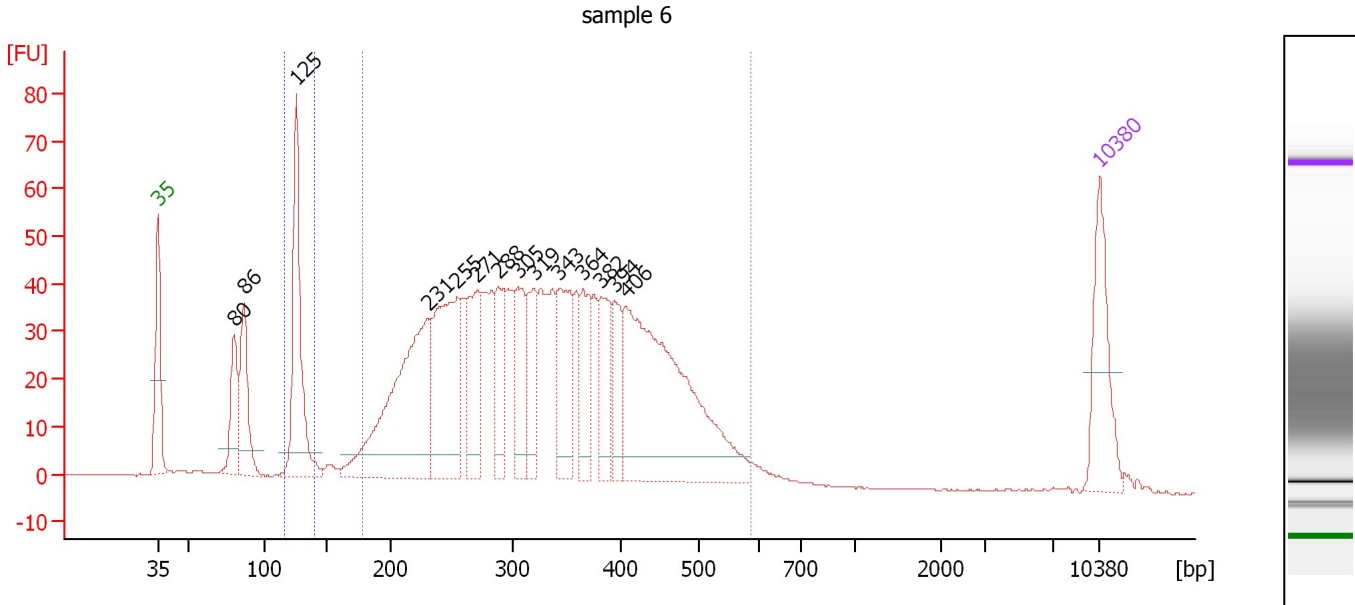
**Region table for sample 7 : sample 5**

From [bp]	To [bp]	Average Size [bp]	Molarity [pmol/l]	Conc. [pg/μl]	Corr. Area	% of Total	Size distribution in CV [%]	Color
118	140	126	6,945.9	579.39	279.3	16	2.7	Blue
200	521	321	10,359.7	2,079.63	1,279.3	74	21.0	Dark Blue

Assay Class: High Sensitivity DNA Assay  
 Data Path: C:\...ents and Settings\Bioanalyzer\2013-09-17\2013-09-17\_001.xad

Created: 9/17/2013 5:08:43 PM  
 Modified: 9/17/2013 5:53:20 PM

**Electropherogram Summary Continued ...**



**Overall Results for sample 8 : sample 6**

Number of peaks found: 14      Corr. Area 1: 1,194.0  
 Noise: 0.1      Corr. Area 2: 93.4

**Peak table for sample 8 : sample 6**

Peak	Size [bp]	Conc. [pg/μl]	Molarity [pmol/l]	Observations
1	35	125.00	5,411.3	Lower Marker
2	80	72.10	1,364.8	
3	86	96.13	1,686.8	
4	125	198.51	2,397.0	
5	231	298.50	1,961.7	
6	255	209.06	1,243.6	
7	271	109.64	613.8	
8	288	67.18	353.7	
9	305	88.96	442.2	
10	319	66.67	316.2	
11	343	104.00	459.6	
12	364	59.55	247.7	
13	382	71.47	283.8	
14	394	48.87	188.1	
15	406	362.18	1,351.7	
16	10,380	75.00	10.9	Upper Marker

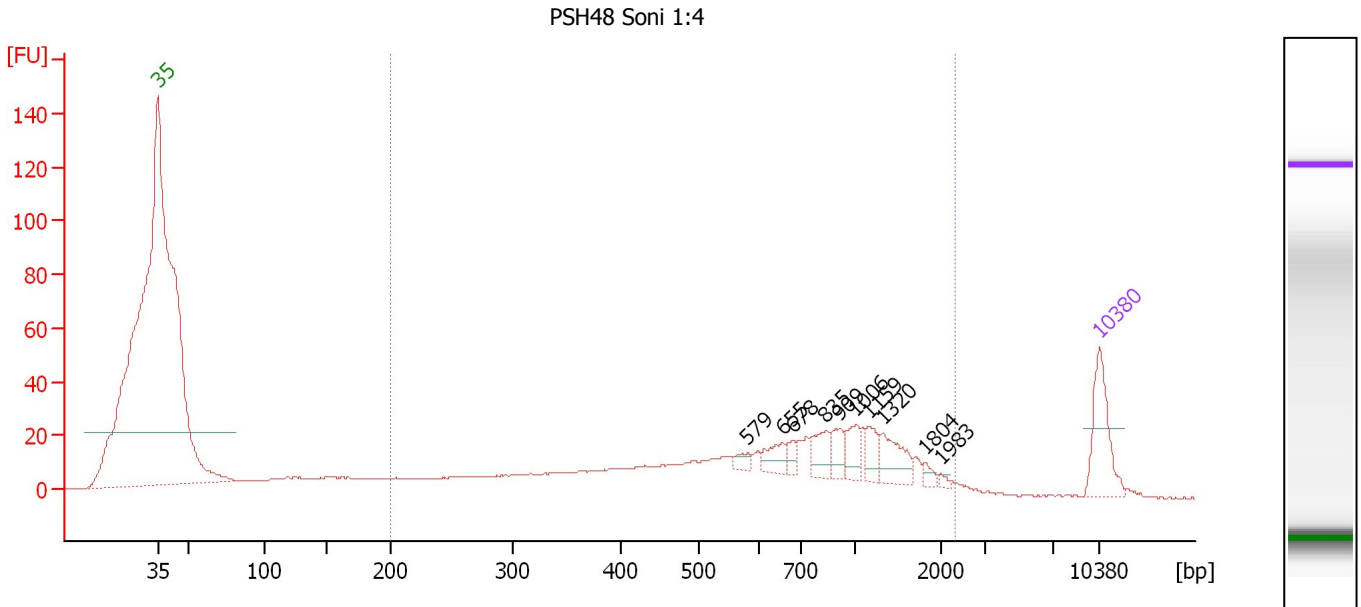
**Region table for sample 8 : sample 6**

From [bp]	To [bp]	Average Size [bp]	Molarity [pmol/l]	Conc. [pg/μl]	Corr. Area	% of Total	Size distribution in CV [%]	Color
115	139	126	2,343.6	195.63	93.4	7	3.0	Blue
177	588	337	9,690.8	1,946.97	1,194.0	84	26.5	Dark Blue

Assay Class: High Sensitivity DNA Assay  
 Data Path: C:\...ents and Settings\Bioanalyzer\2013-09-17\2013-09-17\_001.xad

Created: 9/17/2013 5:08:43 PM  
 Modified: 9/17/2013 5:53:20 PM

**Electropherogram Summary Continued ...**



**Overall Results for sample 9 : PSH48 Soni 1:4**

Number of peaks found: 10                      Corr. Area 1: 585.0  
 Noise: 0.1

**Peak table for sample 9 : PSH48 Soni 1:4**

Peak	Size [bp]	Conc. [pg/μl]	Molarity [pmol/l]	Observations
1	35	125.00	5,411.3	Lower Marker
2	579	13.71	35.9	
3	655	31.46	72.8	
4	678	14.81	33.1	
5	835	39.38	71.4	
6	909	28.92	48.2	
7	1,006	34.06	51.3	
8	1,159	30.06	39.3	
9	1,320	50.67	58.2	
10	1,804	9.73	8.2	
11	1,983	4.92	3.8	
12	10,380	75.00	10.9	Upper Marker

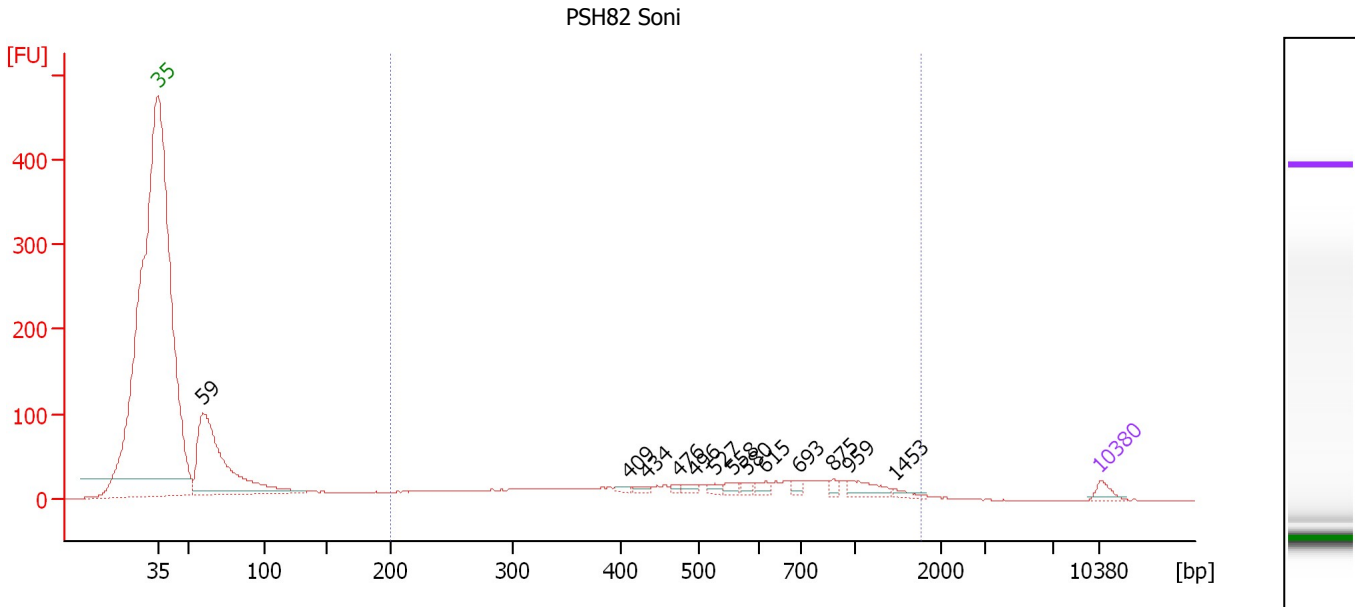
**Region table for sample 9 : PSH48 Soni 1:4**

From [bp]	To [bp]	Average Size [bp]	Molarity [pmol/l]	Conc. [pg/μl]	Corr. Area	% of Total	Size distribution in CV [%]	Color
200	2,291	765	2,947.1	951.77	585.0	84	58.4	Blue

Assay Class: High Sensitivity DNA Assay  
 Data Path: C:\...ents and Settings\Bioanalyzer\2013-09-17\2013-09-17\_001.xad

Created: 9/17/2013 5:08:43 PM  
 Modified: 9/17/2013 5:53:20 PM

**Electropherogram Summary Continued ...**



**Overall Results for sample 10 : PSH82 Soni**

Number of peaks found: 13      Corr. Area 1: 703.7  
 Noise: 0.1

**Peak table for sample 10 : PSH82 Soni**

Peak	Size [bp]	Conc. [pg/μl]	Molarity [pmol/l]	Observations
1	35	125.00	5,411.3	Lower Marker
2	59	2,706.55	69,092.4	
3	409	34.04	126.0	
4	434	41.73	145.8	
5	476	30.03	95.6	
6	496	62.19	189.8	
7	527	56.30	161.8	
8	558	60.47	164.3	
9	580	52.66	137.7	
10	615	70.18	173.0	
11	693	60.38	132.1	
12	875	51.83	89.7	
13	959	181.97	287.5	
14	1,453	54.50	56.8	
15	10,380	75.00	10.9	Upper Marker

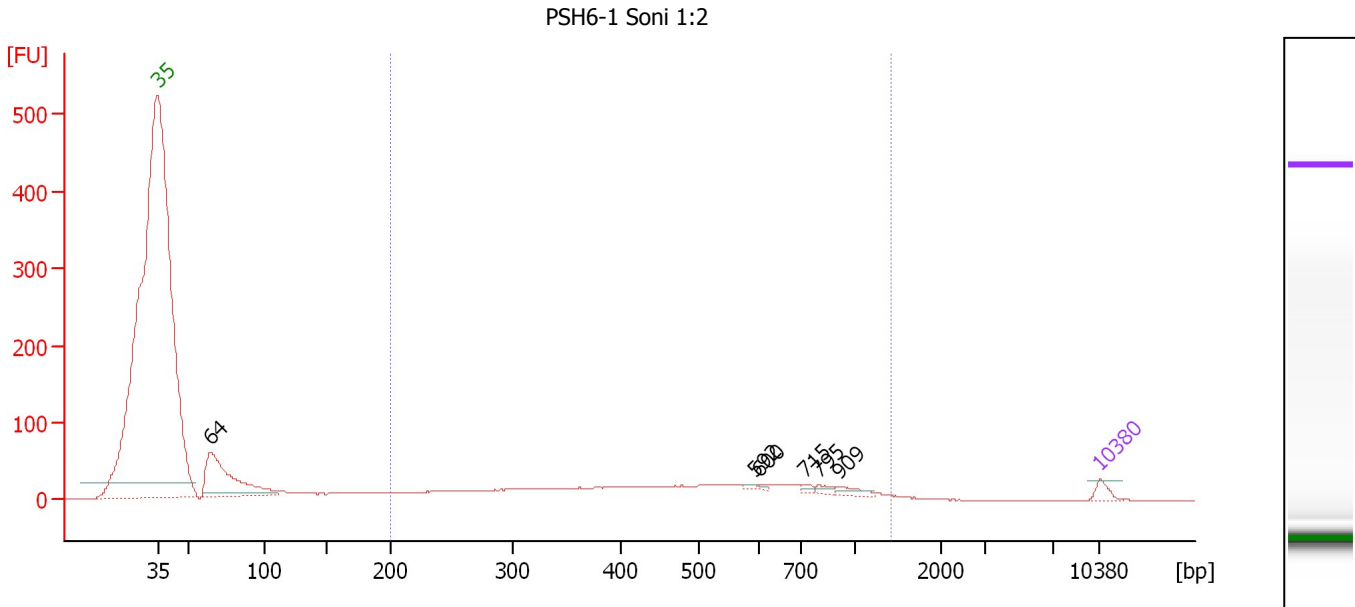
**Region table for sample 10 : PSH82 Soni**

From [bp]	To [bp]	Average Size [bp]	Molarity [pmol/l]	Conc. [pg/μl]	Corr. Area	% of Total	Size distribution in CV [%]	Color
200	1,771	602	10,453.7	2,911.03	703.7	52	54.5	Blue

Assay Class: High Sensitivity DNA Assay  
 Data Path: C:\...ents and Settings\Bioanalyzer\2013-09-17\2013-09-17\_001.xad

Created: 9/17/2013 5:08:43 PM  
 Modified: 9/17/2013 5:53:20 PM

**Electropherogram Summary Continued ...**



**Overall Results for sample 11 : PSH6-1 Soni 1:2**

Number of peaks found: 6      Corr. Area 1: 683.7  
 Noise: 0.1

**Peak table for sample 11 : PSH6-1 Soni 1:2**

Peak	Size [bp]	Conc. [pg/μl]	Molarity [pmol/l]	Observations
1	35	125.00	5,411.3	Lower Marker
2	64	1,394.37	32,870.8	
3	592	21.26	54.5	
4	600	18.78	47.4	
5	715	35.86	76.0	
6	795	51.68	98.5	
7	909	74.58	124.3	
8	10,380	75.00	10.9	Upper Marker

**Region table for sample 11 : PSH6-1 Soni 1:2**

From [bp]	To [bp]	Average Size [bp]	Molarity [pmol/l]	Conc. [pg/μl]	Corr. Area	% of Total	Size distribution in CV [%]	Color
200	1,417	515	10,525.4	2,724.51	683.7	61	46.8	Blue

Assay Class: High Sensitivity DNA Assay  
Data Path: C:\...ents and Settings\Bioanalyzer\2013-09-17\2013-09-17\_001.xad

Created: 9/17/2013 5:08:43 PM  
Modified: 9/17/2013 5:53:20 PM

**Gel Image**

