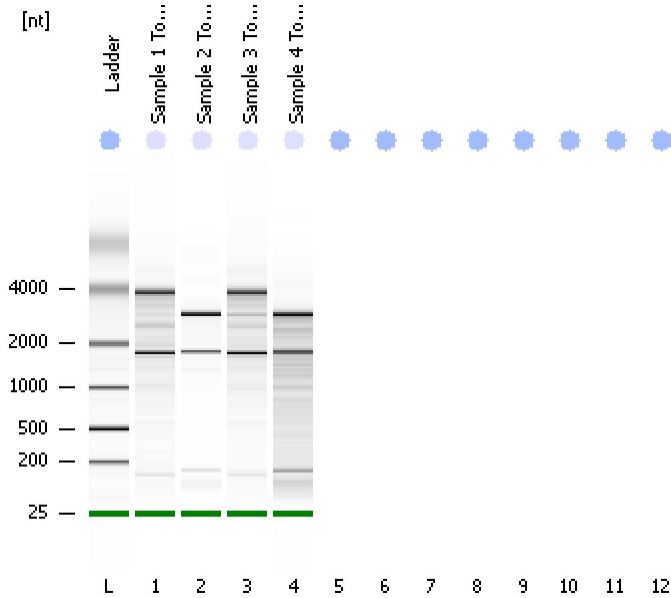


Assay Class: Eukaryote Total RNA Nano
Data Path: C:\...ents and Settings\Bioanalyzer\2013-09-18\2013-09-18_003.xad

Created: 9/18/2013 12:37:58 PM
Modified: 9/18/2013 1:12:23 PM

Electrophoresis File Run Summary



Instrument Information:

Instrument Name: DE13701086 Firmware: C.01.069
Serial#: DE13701086 Type: G2938B

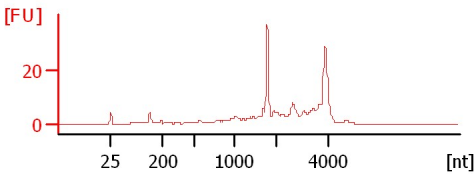
Assay Information:

Assay Origin Path: C:\Program Files\Agilent\2100 bioanalyzer\2100 expert\assays\RNA\Eukaryote Total RNA Nano Series II.xsy
Assay Class: Eukaryote Total RNA Nano
Version: 2.6
Assay Comments: Total RNA Analysis ng sensitivity (Eukaryote)
© Copyright 2003 - 2009 Agilent Technologies, Inc.

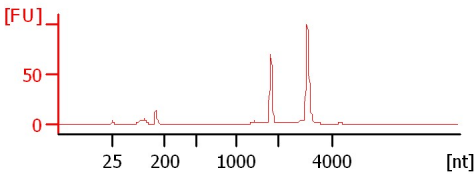
Chip Information:

Chip Lot #:
Reagent Kit Lot #:
Chip Comments:

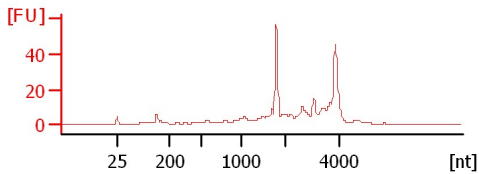
Sample 1 Total RNA
RIN: 7.60



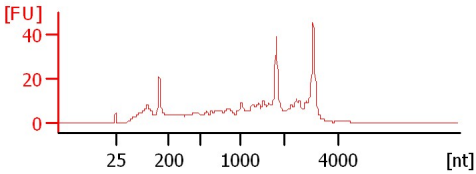
Sample 2 Total RNA
RIN: 6.40



Sample 3 Total RNA
RIN: 7.50



Sample 4 Total RNA
RIN: 5.20



Assay Class: Eukaryote Total RNA Nano
 Data Path: C:\...ents and Settings\Bioanalyzer\2013-09-18\2013-09-18_003.xad

Created: 9/18/2013 12:37:58 PM
 Modified: 9/18/2013 1:12:23 PM

Electrophoresis File Run Summary (Chip Summary)

Sample Name	Sample Comment	Status	Result Label	Result Color
Sample 1 Total RNA		✓	RIN: 7.60	
Sample 2 Total RNA		✓	RIN: 6.40	
Sample 3 Total RNA		✓	RIN: 7.50	
Sample 4 Total RNA		✓	RIN: 5.20	
Ladder		✓	All Other Samples	

Chip Lot # **Reagent Kit Lot #**

Chip Comments :

Assay Class: Eukaryote Total RNA Nano
Data Path: C:\...ents and Settings\Bioanalyzer\2013-09-18\2013-09-18_003.xad

Created: 9/18/2013 12:37:58 PM
Modified: 9/18/2013 1:12:23 PM

Electrophoresis Assay Details

General Analysis Settings

Number of Available Sample and Ladder Wells (Max.) : 13
Minimum Visible Range [s] : 17
Maximum Visible Range [s] : 70
Start Analysis Time Range [s] : 19
End Analysis Time Range [s] : 69
Ladder Concentration [ng/μl] : 150
Lower Marker Concentration [ng/μl] : 0
Upper Marker Concentration [ng/μl] : 0
Used Lower Marker for Quantitation
Standard Curve Fit is Logarithmic
Show Data Aligned to Lower Marker

Integrator Settings

Integration Start Time [s] : 19
Integration End Time [s] : 69
Slope Threshold : 0.6
Height Threshold [FU] : 0.5
Area Threshold : 0.2
Width Threshold [s] : 0.5
Baseline Plateau [s] : 6

Filter Settings

Filter Width [s] : 0.5
Polynomial Order : 4

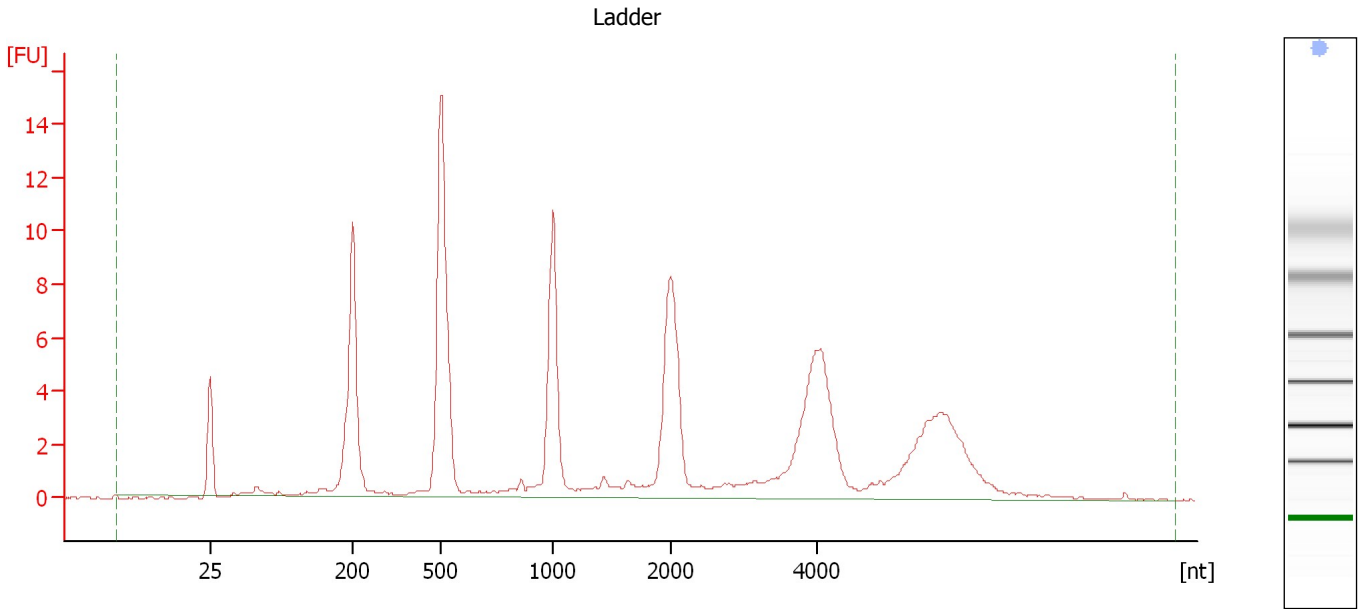
Ladder

Ladder Peak	Size
1	25
2	200
3	500
4	1000
5	2000
6	4000

Assay Class: Eukaryote Total RNA Nano
Data Path: C:\...ents and Settings\Bioanalyzer\2013-09-18\2013-09-18_003.xad

Created: 9/18/2013 12:37:58 PM
Modified: 9/18/2013 1:12:23 PM

Electropherogram Summary



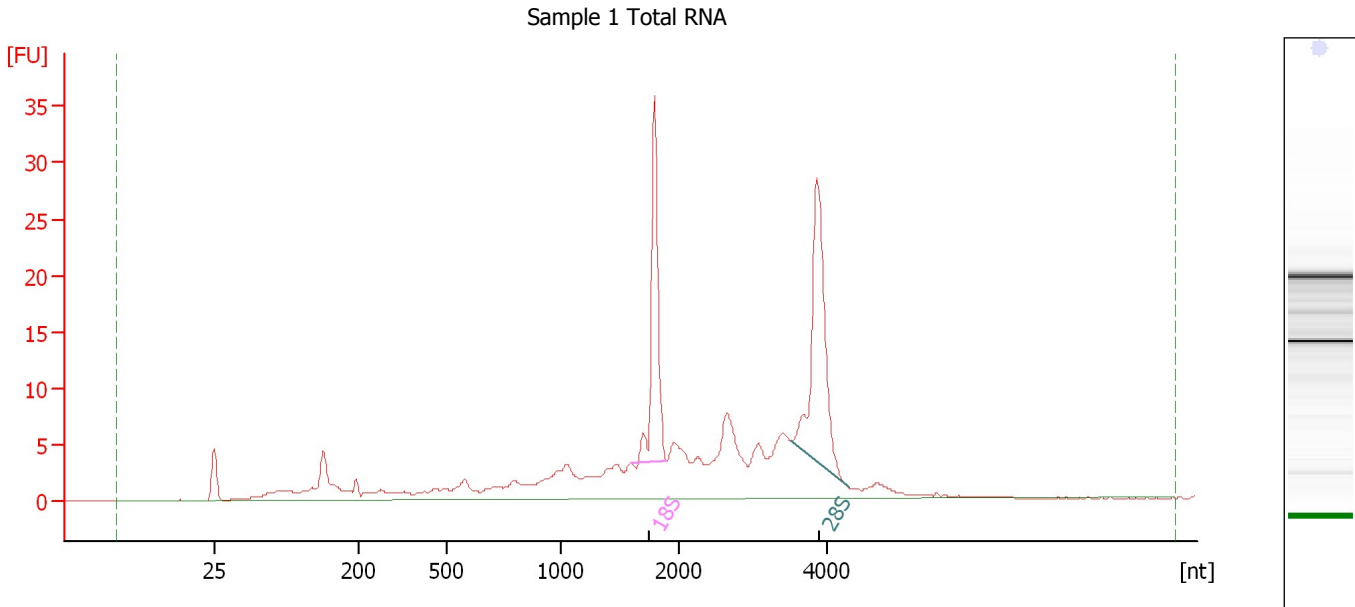
Overall Results for Ladder

RNA Area:	115.4	Result Flagging Color:	
RNA Concentration:	150 ng/μl	Result Flagging Label:	All Other Samples

Assay Class: Eukaryote Total RNA Nano
 Data Path: C:\...ents and Settings\Bioanalyzer\2013-09-18\2013-09-18_003.xad

Created: 9/18/2013 12:37:58 PM
 Modified: 9/18/2013 1:12:23 PM

Electropherogram Summary Continued ...



Overall Results for sample 1 : Sample 1 Total RNA

RNA Area:	212.9	RNA Integrity Number (RIN):	7.6 (B.02.08)
RNA Concentration:	277 ng/μl	Result Flagging Color:	
rRNA Ratio [28s / 18s]:	1.3	Result Flagging Label:	RIN: 7.60

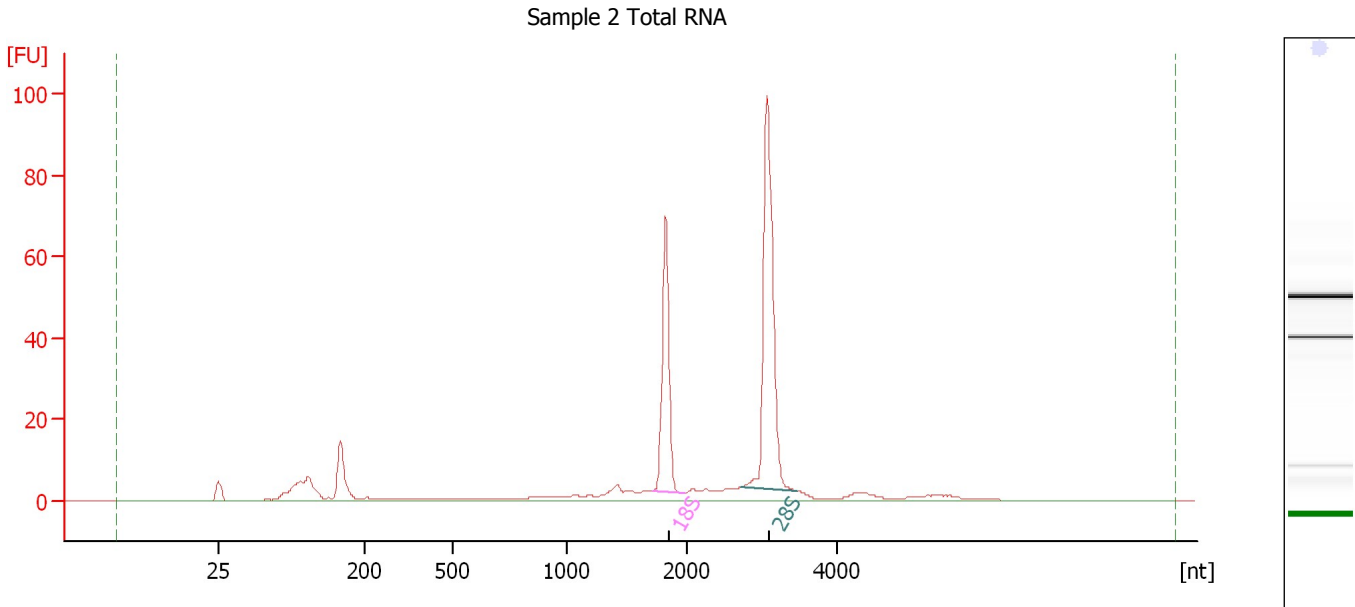
Fragment table for sample 1 : Sample 1 Total RNA

Name	Start Size [nt]	End Size [nt]	Area	% of total Area
18S	1,597	1,895	26.5	12.4
28S	3,514	4,290	34.0	16.0

Assay Class: Eukaryote Total RNA Nano
 Data Path: C:\...ents and Settings\Bioanalyzer\2013-09-18\2013-09-18_003.xad

Created: 9/18/2013 12:37:58 PM
 Modified: 9/18/2013 1:12:23 PM

Electropherogram Summary Continued ...



Overall Results for sample 2 : Sample 2 Total RNA

RNA Area:	290.7	RNA Integrity Number (RIN):	6.4 (B.02.08, Anomaly Threshold(s) manually adapted)
RNA Concentration:	378 ng/μl		
rRNA Ratio [28s / 18s]:	1.8	Result Flagging Color:	
		Result Flagging Label:	RIN: 6.40

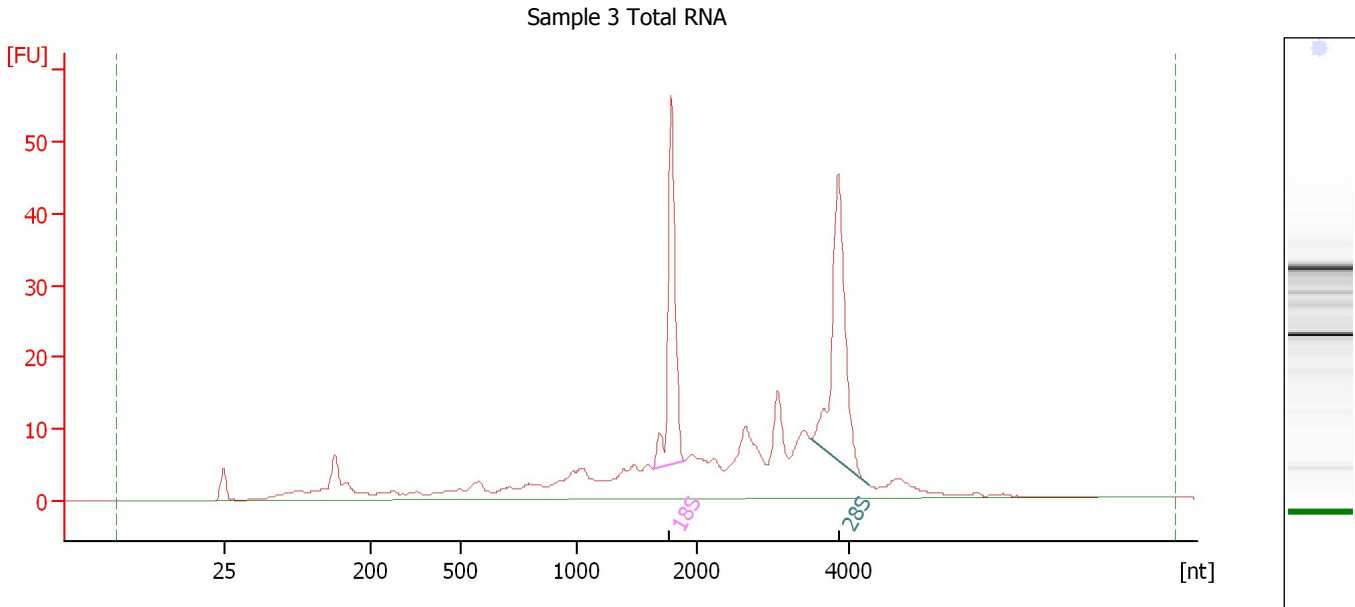
Fragment table for sample 2 : Sample 2 Total RNA

Name	Start Size [nt]	End Size [nt]	Area	% of total Area
18S	1,718	1,992	54.7	18.8
28S	2,715	3,480	98.6	33.9

Assay Class: Eukaryote Total RNA Nano
 Data Path: C:\...ents and Settings\Bioanalyzer\2013-09-18\2013-09-18_003.xad

Created: 9/18/2013 12:37:58 PM
 Modified: 9/18/2013 1:12:23 PM

Electropherogram Summary Continued ...



Overall Results for sample 3 : Sample 3 Total RNA

RNA Area:	331.5	RNA Integrity Number (RIN):	7.5 (B.02.08)
RNA Concentration:	431 ng/μl	Result Flagging Color:	
rRNA Ratio [28s / 18s]:	1.2	Result Flagging Label:	RIN: 7.50

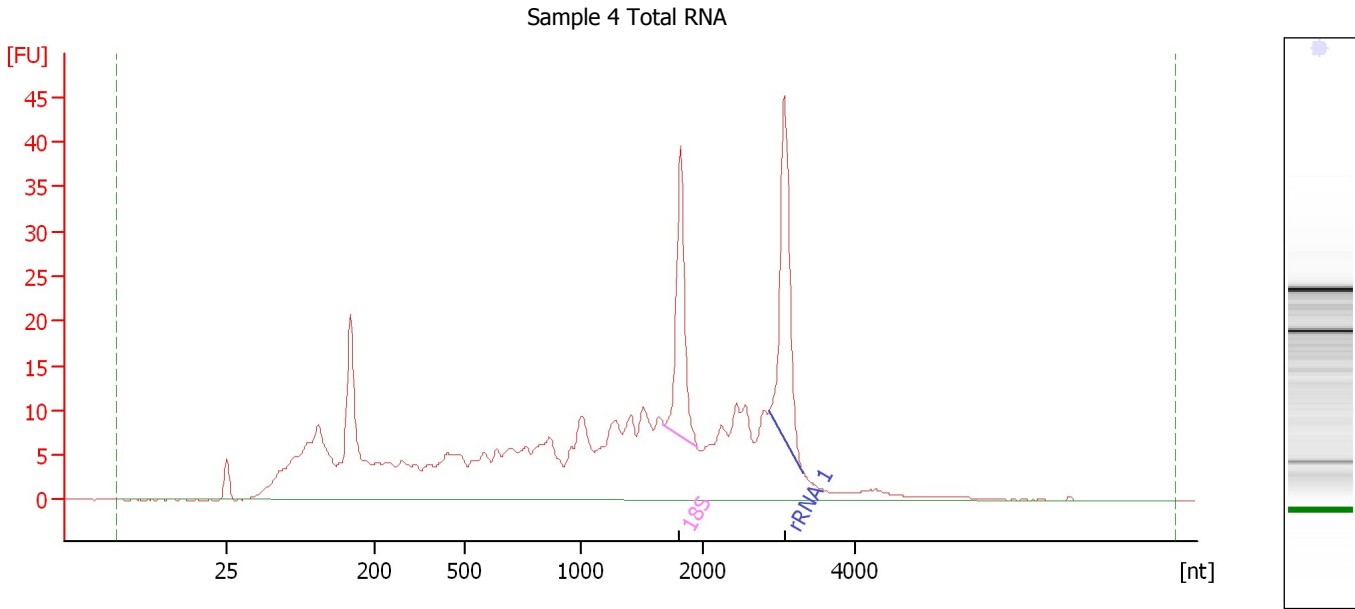
Fragment table for sample 3 : Sample 3 Total RNA

Name	Start Size [nt]	End Size [nt]	Area	% of total Area
18S	1,630	1,896	44.2	13.3
28S	3,513	4,260	52.9	15.9

Assay Class: Eukaryote Total RNA Nano
Data Path: C:\...ents and Settings\Bioanalyzer\2013-09-18\2013-09-18_003.xad

Created: 9/18/2013 12:37:58 PM
Modified: 9/18/2013 1:12:23 PM

Electropherogram Summary Continued ...



Overall Results for sample 4 : Sample 4 Total RNA

RNA Area: 481.1 RNA Integrity Number (RIN): 5.2 (B.02.08)
RNA Concentration: 625 ng/μl Result Flagging Color:
rRNA Ratio [28s / 18s]: 0.0 Result Flagging Label: RIN: 5.20

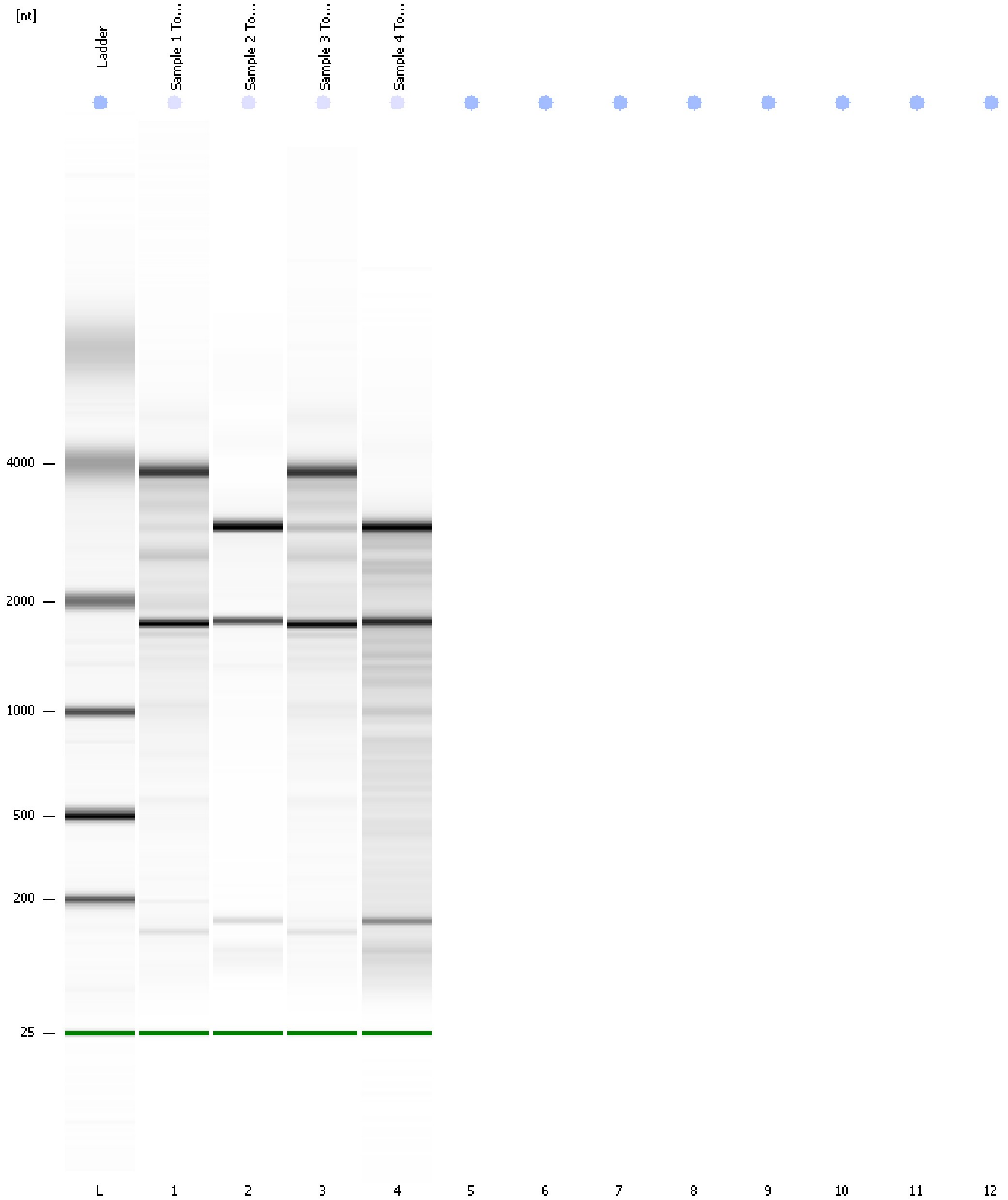
Fragment table for sample 4 : Sample 4 Total RNA

Name	Start Size [nt]	End Size [nt]	Area	% of total Area
18S	1,677	1,947	31.1	6.5
rRNA 1	2,877	3,316	38.1	7.9

Assay Class: Eukaryote Total RNA Nano
Data Path: C:\...ents and Settings\Bioanalyzer\2013-09-18\2013-09-18_003.xad

Created: 9/18/2013 12:37:58 PM
Modified: 9/18/2013 1:12:23 PM

Gel Image



Assay Class: Eukaryote Total RNA Nano
Data Path: C:\...ents and Settings\Bioanalyzer\2013-09-18\2013-09-18_003.xad

Created: 9/18/2013 12:37:58 PM
Modified: 9/18/2013 1:12:23 PM

Invalid Samples

- Sample 5 has not been run, no results available.
- Sample 6 has not been run, no results available.
- Sample 7 has not been run, no results available.
- Sample 8 has not been run, no results available.
- Sample 9 has not been run, no results available.
- Sample 10 has not been run, no results available.
- Sample 11 has not been run, no results available.
- Sample 12 has not been run, no results available.