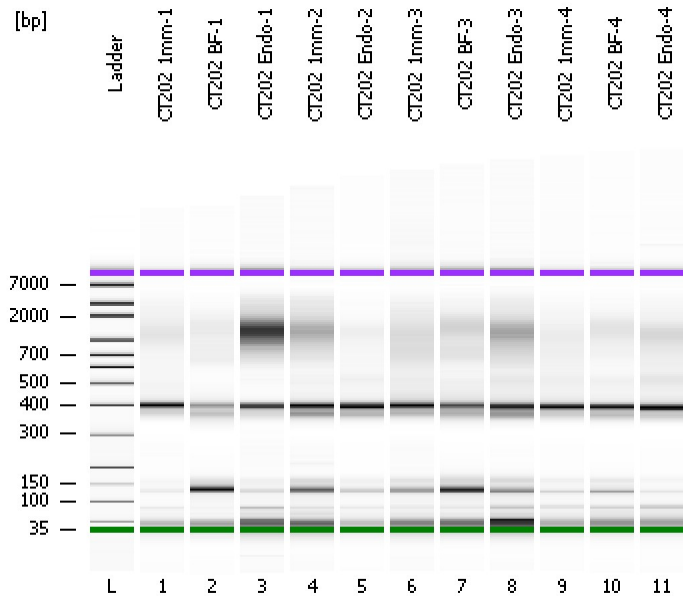


Assay Class: High Sensitivity DNA Assay
Data Path: C:\...ents and Settings\Bioanalyzer\2013-09-18\2013-09-18_007.xad

Created: 9/18/2013 3:27:38 PM
Modified: 9/18/2013 4:14:19 PM

Electrophoresis File Run Summary



Instrument Information:

Instrument Name: DE13701086 Firmware: C.01.069
Serial#: DE13701086 Type: G2938B

Assay Information:

Assay Origin Path: C:\Program Files\Agilent\2100 bioanalyzer\2100 expert\assays\dsDNA\High Sensitivity DNA.xsy
Assay Class: High Sensitivity DNA Assay
Version: 1.03
Assay Comments: Copyright © 2003-2010 Agilent Technologies

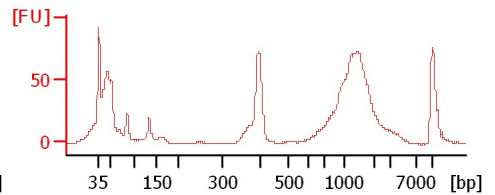
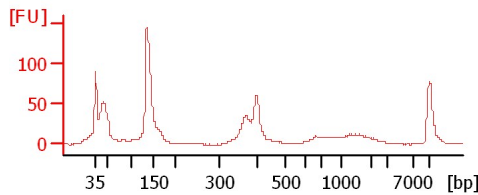
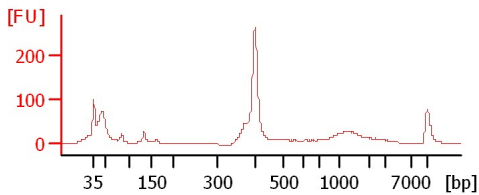
Chip Information:

Chip Lot #:
Reagent Kit Lot #:
Chip Comments:

CT202 1mm-1

CT202 BF-1

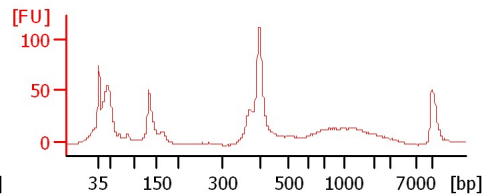
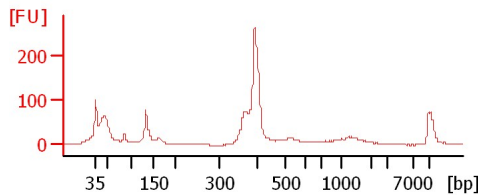
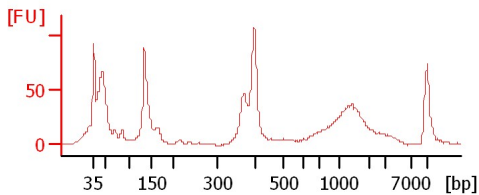
CT202 Endo-1



CT202 1mm-2

CT202 Endo-2

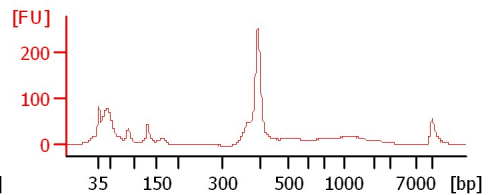
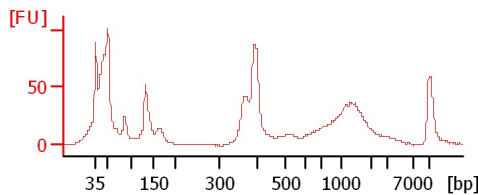
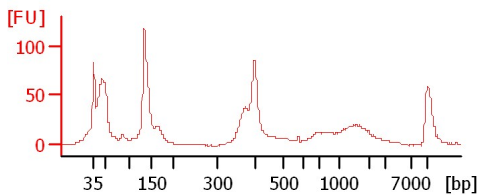
CT202 1mm-3



CT202 BF-3

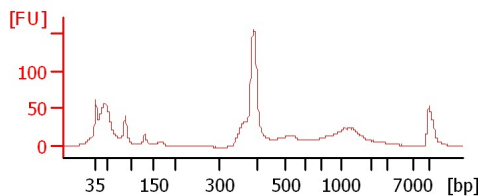
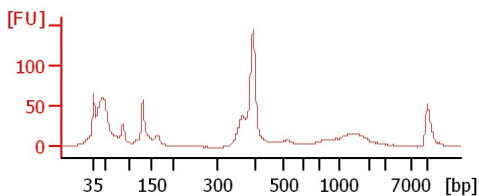
CT202 Endo-3

CT202 1mm-4



CT202 BF-4

CT202 Endo-4



Assay Class: High Sensitivity DNA Assay
Data Path: C:\...ents and Settings\Bioanalyzer\2013-09-18\2013-09-18_007.xad

Created: 9/18/2013 3:27:38 PM
Modified: 9/18/2013 4:14:19 PM

Electrophoresis File Run Summary (Chip Summary)

Sample Name	Sample Comment	Rest. Digest	Status	Observation	Result Label	Result Color
CT202 1mm-1		<input type="checkbox"/>	✓			
CT202 BF-1		<input type="checkbox"/>	✓			
CT202 Endo-1		<input type="checkbox"/>	✓			
CT202 1mm-2		<input type="checkbox"/>	✓			
CT202 Endo-2		<input type="checkbox"/>	✓			
CT202 1mm-3		<input type="checkbox"/>	✓			
CT202 BF-3		<input type="checkbox"/>	✓			
CT202 Endo-3		<input type="checkbox"/>	✓			
CT202 1mm-4		<input type="checkbox"/>	✓			
CT202 BF-4		<input type="checkbox"/>	✓			
CT202 Endo-4		<input type="checkbox"/>	✓			
Ladder		<input type="checkbox"/>	✓			

Chip Lot #

Reagent Kit Lot #

Chip Comments :

Assay Class: High Sensitivity DNA Assay
Data Path: C:\...ents and Settings\Bioanalyzer\2013-09-18\2013-09-18_007.xad

Created: 9/18/2013 3:27:38 PM
Modified: 9/18/2013 4:14:19 PM

Electrophoresis Assay Details

General Analysis Settings

Number of Available Sample and Ladder Wells (Max.) : 12
Minimum Visible Range [s] : 32
Maximum Visible Range [s] : 138
Start Analysis Time Range [s] : 33
End Analysis Time Range [s] : 137.5
Ladder Concentration [pg/μl] : 1950
Uses Standard Area for Ladder Fragments
Lower Marker Concentration [pg/μl] : 125
Upper Marker Concentration [pg/μl] : 75
Used Upper Marker for Quantitation
Standard Curve Fit is Point to Point
Show Data Aligned to Lower and Upper Marker

Integrator Settings

Integration Start Time [s] : 33.05
Integration End Time [s] : 137
Slope Threshold : 0.8
Height Threshold [FU] : 5
Area Threshold : 0.1
Width Threshold [s] : 0.6
Baseline Plateau [s] : 0.5

Filter Settings

Filter Width [s] : 0.5
Polynomial Order : 4

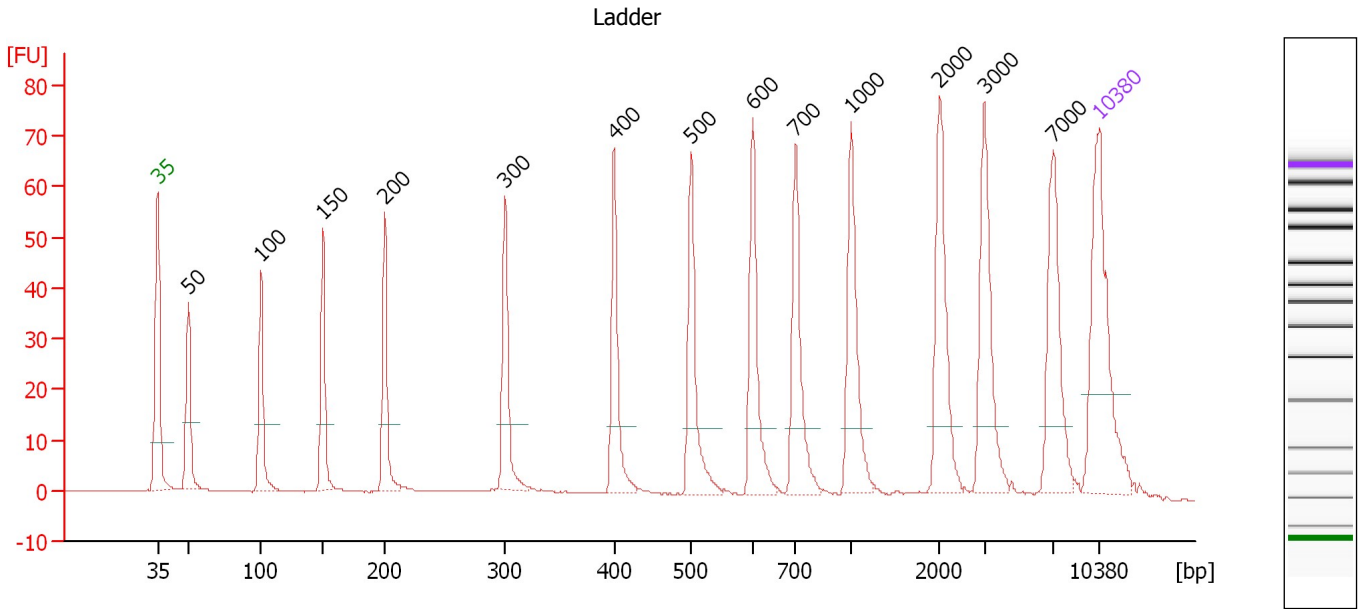
Ladder

Ladder Peak	Size	Area
1	35	160
2	50	210
3	100	208
4	150	221
5	200	242
6	300	270
7	400	305
8	500	306
9	600	336
10	700	321
11	1000	366
12	2000	413
13	3000	411
14	7000	400
15	10380	214

Assay Class: High Sensitivity DNA Assay
 Data Path: C:\...ents and Settings\Bioanalyzer\2013-09-18\2013-09-18_007.xad

Created: 9/18/2013 3:27:38 PM
 Modified: 9/18/2013 4:14:19 PM

Electropherogram Summary



Overall Results for Ladder

Noise: 0.1

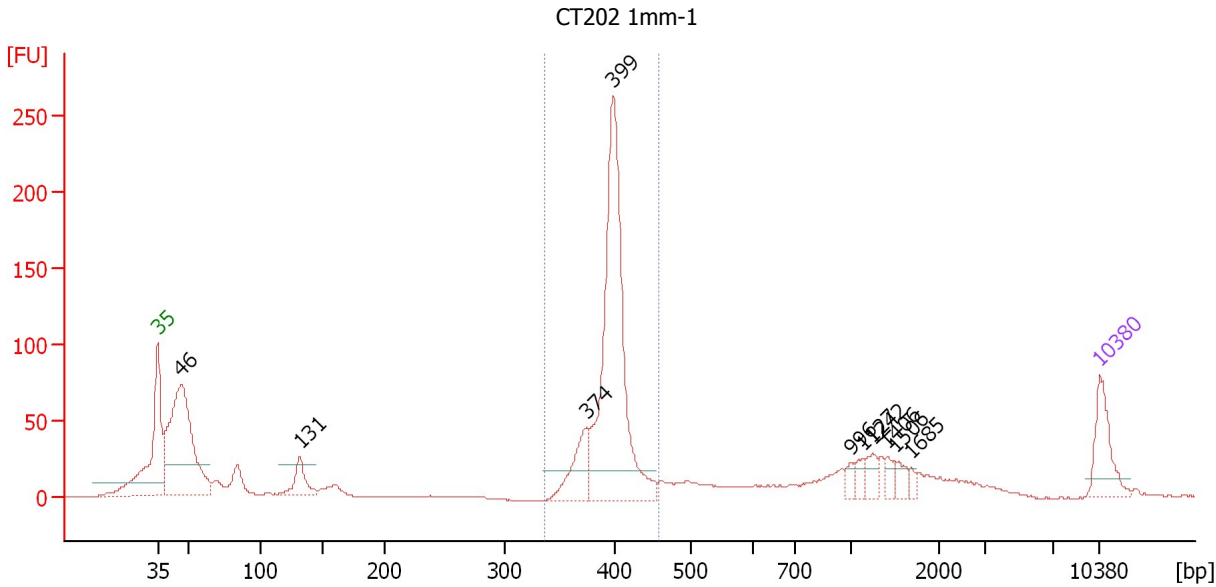
Peak table for Ladder

Peak	Size [bp]	Conc. [pg/μl]	Molarity [pmol/l]	Observations
1	35	125.00	5,411.3	Lower Marker
2	50	150.00	4,545.5	Ladder Peak
3	100	150.00	2,272.7	Ladder Peak
4	150	150.00	1,515.2	Ladder Peak
5	200	150.00	1,136.4	Ladder Peak
6	300	150.00	757.6	Ladder Peak
7	400	150.00	568.2	Ladder Peak
8	500	150.00	454.5	Ladder Peak
9	600	150.00	378.8	Ladder Peak
10	700	150.00	324.7	Ladder Peak
11	1,000	150.00	227.3	Ladder Peak
12	2,000	150.00	113.6	Ladder Peak
13	3,000	150.00	75.8	Ladder Peak
14	7,000	150.00	32.5	Ladder Peak
15	10,380	75.00	10.9	Upper Marker

Assay Class: High Sensitivity DNA Assay
 Data Path: C:\...ents and Settings\Bioanalyzer\2013-09-18\2013-09-18_007.xad

Created: 9/18/2013 3:27:38 PM
 Modified: 9/18/2013 4:14:19 PM

Electropherogram Summary Continued ...



Setpoint Deviations for sample 1 : CT202 1mm-1

Height Threshold [FU] : 20

Overall Results for sample 1 : CT202 1mm-1

Number of peaks found: 10 Corr. Area 1: 629.8
 Noise: 0.1

Peak table for sample 1 : CT202 1mm-1

Peak	Size [bp]	Conc. [pg/μl]	Molarity [pmol/l]	Observations
1	35	125.00	5,411.3	Lower Marker
2	46	576.47	18,816.8	
3	131	71.10	821.0	
4	374	105.92	428.7	
5	399	665.71	2,526.0	
6	996	17.43	26.5	
7	1,127	20.72	27.8	
8	1,242	27.53	33.6	
9	1,406	18.75	20.2	
10	1,506	20.71	20.8	
11	1,685	10.38	9.3	
12	10,380	75.00	10.9	Upper Marker

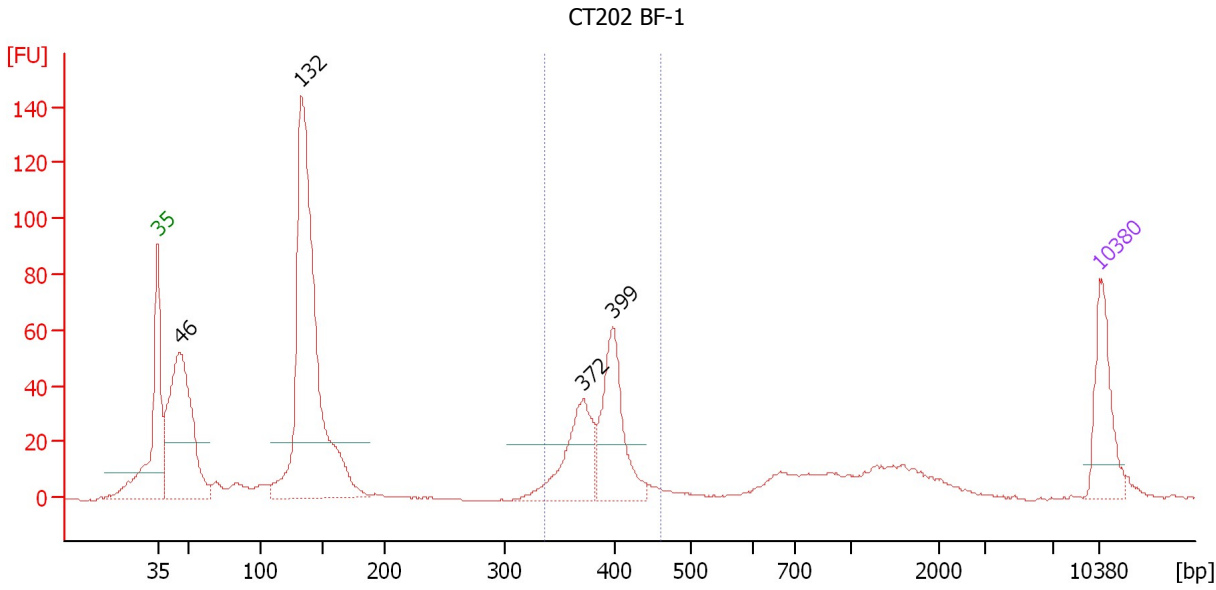
Region table for sample 1 : CT202 1mm-1

From [bp]	To [bp]	Average Size [bp]	Molarity [pmol/l]	Conc. [pg/μl]	Corr. Area	% of Total	Size distribution in CV [%]	Color
337	458	397	2,844.9	745.17	629.8	44	4.3	Blue

Assay Class: High Sensitivity DNA Assay
 Data Path: C:\...ents and Settings\Bioanalyzer\2013-09-18\2013-09-18_007.xad

Created: 9/18/2013 3:27:38 PM
 Modified: 9/18/2013 4:14:19 PM

Electropherogram Summary Continued ...



Setpoint Deviations for sample 2 : CT202 BF-1

Height Threshold [FU] : 20

Overall Results for sample 2 : CT202 BF-1

Number of peaks found: 4 Corr. Area 1: 247.1
 Noise: 0.3

Peak table for sample 2 : CT202 BF-1

Peak	Size [bp]	Conc. [pg/μl]	Molarity [pmol/l]	Observations
1	35	125.00	5,411.3	Lower Marker
2	46	405.28	13,377.3	
3	132	739.80	8,472.3	
4	372	139.67	569.4	
5	399	164.00	623.4	
6	10,380	75.00	10.9	Upper Marker

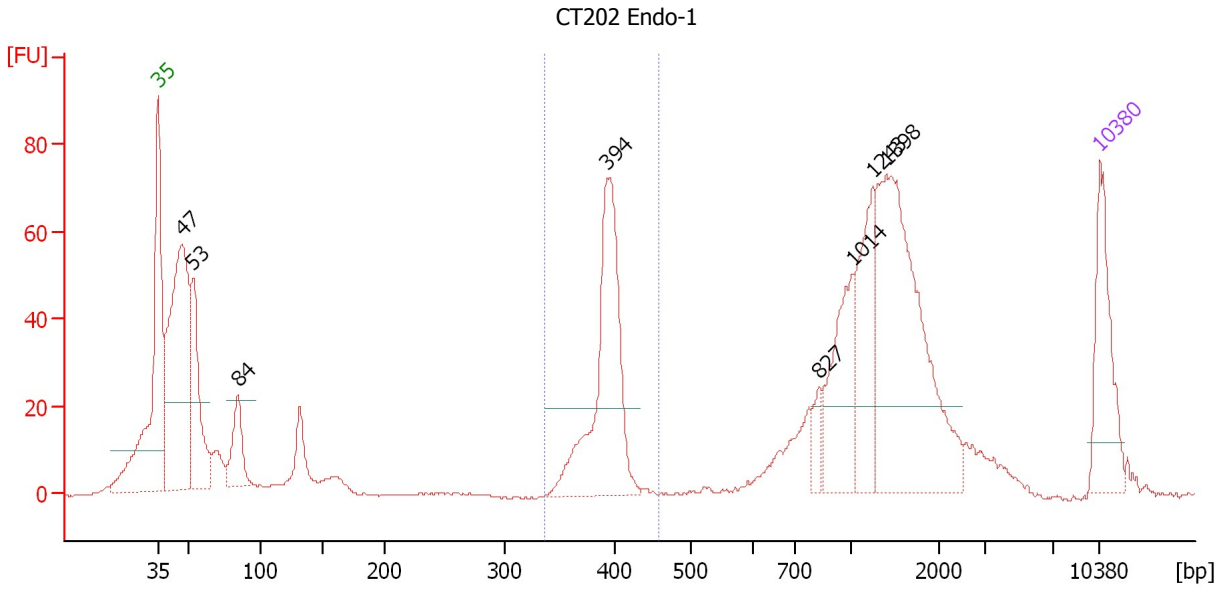
Region table for sample 2 : CT202 BF-1

From [bp]	To [bp]	Average Size [bp]	Molarity [pmol/l]	Conc. [pg/μl]	Corr. Area	% of Total	Size distribution in CV [%]	Color
336	459	387	1,121.0	285.88	247.1	22	5.8	Blue

Assay Class: High Sensitivity DNA Assay
 Data Path: C:\...ents and Settings\Bioanalyzer\2013-09-18\2013-09-18_007.xad

Created: 9/18/2013 3:27:38 PM
 Modified: 9/18/2013 4:14:19 PM

Electropherogram Summary Continued ...



Setpoint Deviations for sample 3 : CT202 Endo-1

Height Threshold [FU] : 20

Overall Results for sample 3 : CT202 Endo-1

Number of peaks found: 8 Corr. Area 1: 188.8
 Noise: 0.2

Peak table for sample 3 : CT202 Endo-1

Peak	Size [bp]	Conc. [pg/μl]	Molarity [pmol/l]	Observations
1	35	125.00	5,411.3	Lower Marker
2	47	368.39	11,925.3	
3	53	150.04	4,278.0	
4	84	63.88	1,150.3	
5	394	235.86	907.6	
6	827	17.92	32.8	
7	1,014	97.76	146.1	
8	1,243	95.22	116.0	
9	1,398	281.26	304.7	
10	10,380	75.00	10.9	Upper Marker

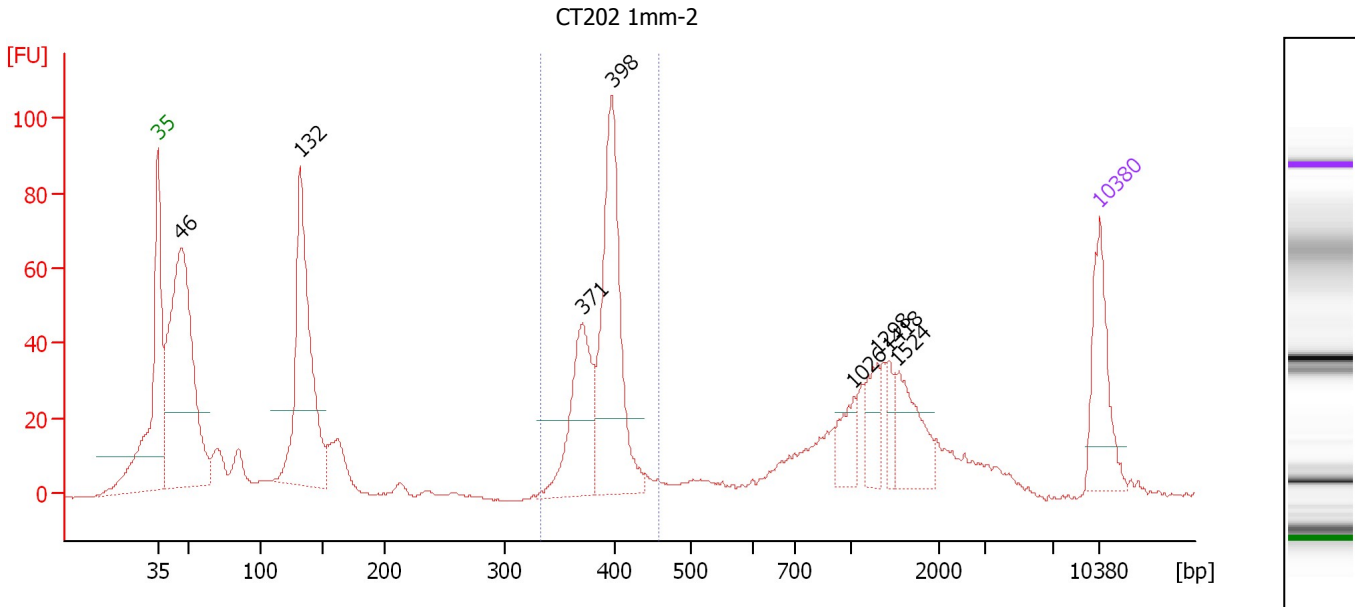
Region table for sample 3 : CT202 Endo-1

From [bp]	To [bp]	Average Size [bp]	Molarity [pmol/l]	Conc. [pg/μl]	Corr. Area	% of Total	Size distribution in CV [%]	Color
335	458	392	909.3	234.90	188.8	16	3.9	Blue

Assay Class: High Sensitivity DNA Assay
 Data Path: C:\...ents and Settings\Bioanalyzer\2013-09-18\2013-09-18_007.xad

Created: 9/18/2013 3:27:38 PM
 Modified: 9/18/2013 4:14:19 PM

Electropherogram Summary Continued ...



Setpoint Deviations for sample 4 : CT202 1mm-2

Height Threshold [FU] : 20

Overall Results for sample 4 : CT202 1mm-2

Number of peaks found: 8 Corr. Area 1: 324.5
 Noise: 0.2

Peak table for sample 4 : CT202 1mm-2

Peak	Size [bp]	Conc. [pg/µl]	Molarity [pmol/l]	Observations
1	35	125.00	5,411.3	Lower Marker
2	46	545.83	17,828.3	
3	132	349.13	4,005.0	
4	371	154.13	629.9	
5	398	272.07	1,036.7	
6	1,026	36.34	53.6	
7	1,298	38.48	44.9	
8	1,418	21.40	22.9	
9	1,524	66.20	65.8	
10	10,380	75.00	10.9	Upper Marker

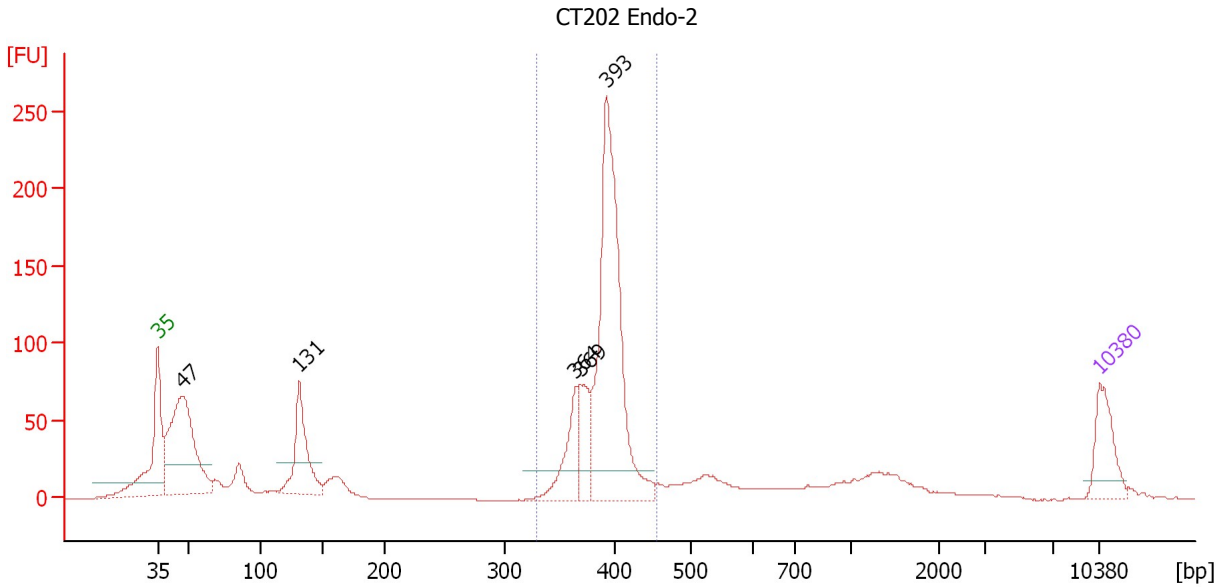
Region table for sample 4 : CT202 1mm-2

From [bp]	To [bp]	Average Size [bp]	Molarity [pmol/l]	Conc. [pg/µl]	Corr. Area	% of Total	Size distribution in CV [%]	Color
333	457	389	1,635.2	419.55	324.5	26	4.9	Blue

Assay Class: High Sensitivity DNA Assay
 Data Path: C:\...ents and Settings\Bioanalyzer\2013-09-18\2013-09-18_007.xad

Created: 9/18/2013 3:27:38 PM
 Modified: 9/18/2013 4:14:19 PM

Electropherogram Summary Continued ...



Setpoint Deviations for sample 5 : CT202 Endo-2

Height Threshold [FU] : 20

Overall Results for sample 5 : CT202 Endo-2

Number of peaks found: 5 Corr. Area 1: 755.1
 Noise: 0.3

Peak table for sample 5 : CT202 Endo-2

Peak	Size [bp]	Conc. [pg/μl]	Molarity [pmol/l]	Observations
1	35	125.00	5,411.3	Lower Marker
2	47	471.86	15,213.7	
3	131	196.13	2,268.6	
4	364	124.52	517.7	
5	369	87.84	360.9	
6	393	626.27	2,413.2	
7	10,380	75.00	10.9	Upper Marker

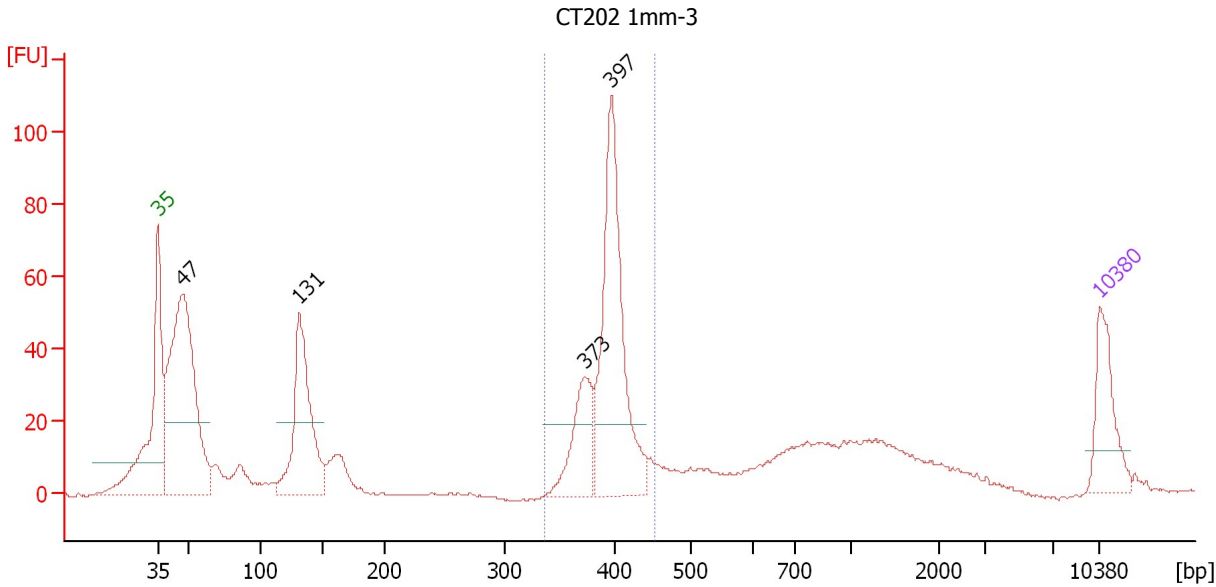
Region table for sample 5 : CT202 Endo-2

From [bp]	To [bp]	Average Size [bp]	Molarity [pmol/l]	Conc. [pg/μl]	Corr. Area	% of Total	Size distribution in CV [%]	Color
329	456	391	3,160.9	813.88	755.1	48	4.8	Blue

Assay Class: High Sensitivity DNA Assay
 Data Path: C:\...ents and Settings\Bioanalyzer\2013-09-18\2013-09-18_007.xad

Created: 9/18/2013 3:27:38 PM
 Modified: 9/18/2013 4:14:19 PM

Electropherogram Summary Continued ...



Setpoint Deviations for sample 6 : CT202 1mm-3

Height Threshold [FU] : 20

Overall Results for sample 6 : CT202 1mm-3

Number of peaks found: 4 Corr. Area 1: 313.1
 Noise: 0.3

Peak table for sample 6 : CT202 1mm-3

Peak	Size [bp]	Conc. [pg/µl]	Molarity [pmol/l]	Observations
1	35	125.00	5,411.3	Lower Marker
2	47	600.57	19,291.3	
3	131	284.44	3,289.9	
4	373	119.36	485.4	
5	397	368.65	1,405.7	
6	10,380	75.00	10.9	Upper Marker

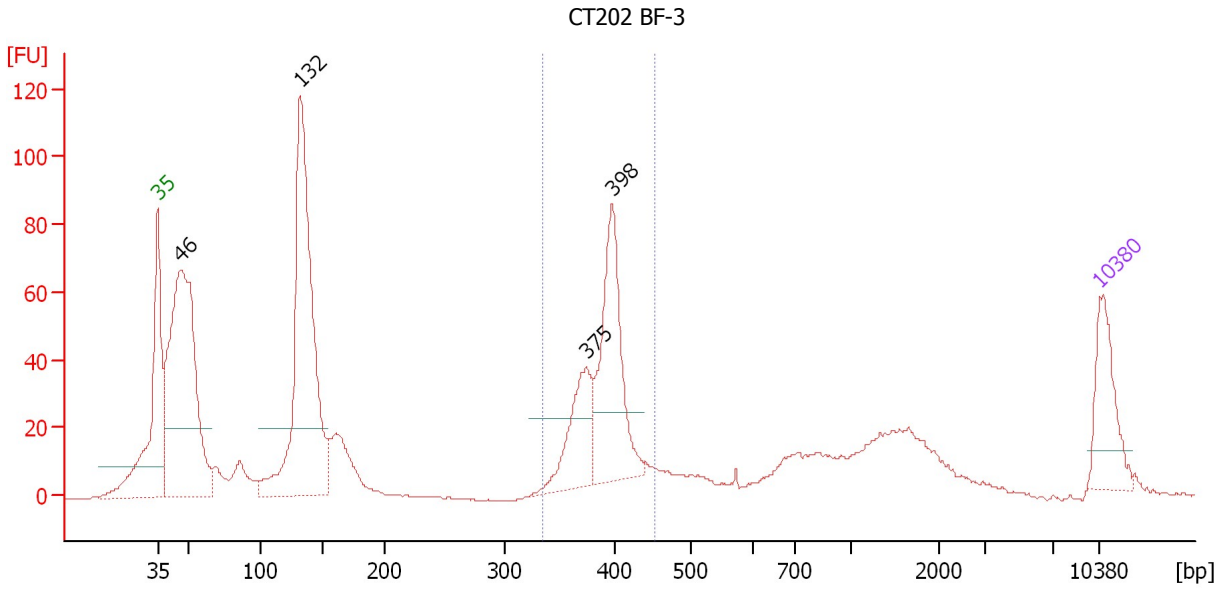
Region table for sample 6 : CT202 1mm-3

From [bp]	To [bp]	Average Size [bp]	Molarity [pmol/l]	Conc. [pg/µl]	Corr. Area	% of Total	Size distribution in CV [%]	Color
336	454	395	1,885.2	490.92	313.1	30	5.0	Blue

Assay Class: High Sensitivity DNA Assay
 Data Path: C:\...ents and Settings\Bioanalyzer\2013-09-18\2013-09-18_007.xad

Created: 9/18/2013 3:27:38 PM
 Modified: 9/18/2013 4:14:19 PM

Electropherogram Summary Continued ...



Setpoint Deviations for sample 7 : CT202 BF-3

Height Threshold [FU] : 20

Overall Results for sample 7 : CT202 BF-3

Number of peaks found: 4 Corr. Area 1: 306.8
 Noise: 0.3

Peak table for sample 7 : CT202 BF-3

Peak	Size [bp]	Conc. [pg/μl]	Molarity [pmol/l]	Observations
1	35	125.00	5,411.3	Lower Marker
2	46	630.15	20,611.7	
3	132	591.86	6,815.9	
4	375	115.48	467.1	
5	398	226.59	863.1	
6	10,380	75.00	10.9	Upper Marker

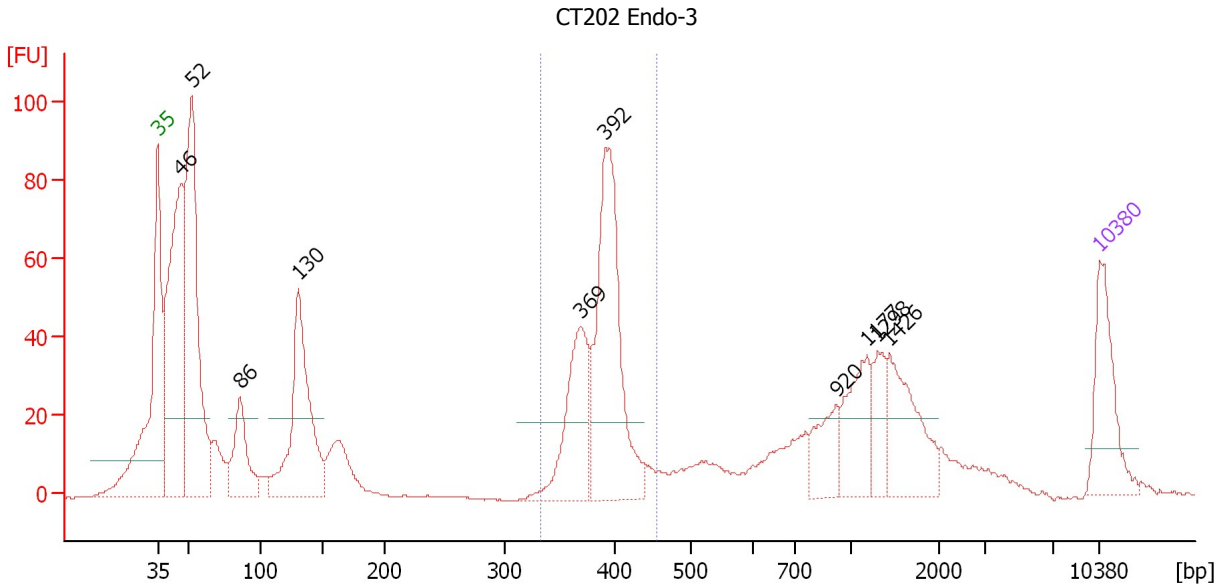
Region table for sample 7 : CT202 BF-3

From [bp]	To [bp]	Average Size [bp]	Molarity [pmol/l]	Conc. [pg/μl]	Corr. Area	% of Total	Size distribution in CV [%]	Color
334	452	391	1,552.9	399.32	306.8	23	5.6	Blue

Assay Class: High Sensitivity DNA Assay
 Data Path: C:\...ents and Settings\Bioanalyzer\2013-09-18\2013-09-18_007.xad

Created: 9/18/2013 3:27:38 PM
 Modified: 9/18/2013 4:14:19 PM

Electropherogram Summary Continued ...



Setpoint Deviations for sample 8 : CT202 Endo-3

Height Threshold [FU] : 20

Overall Results for sample 8 : CT202 Endo-3

Number of peaks found: 10 Corr. Area 1: 335.4
 Noise: 0.2

Peak table for sample 8 : CT202 Endo-3

Peak	Size [bp]	Conc. [pg/μl]	Molarity [pmol/l]	Observations
1	35	125.00	5,411.3	Lower Marker
2	46	405.25	13,216.4	
3	52	420.48	12,170.7	
4	86	104.65	1,852.6	
5	130	258.23	3,007.6	
6	369	148.65	610.6	
7	392	295.94	1,144.7	
8	920	52.15	85.9	
9	1,177	76.57	98.6	
10	1,298	39.60	46.2	
11	1,426	94.87	100.8	
12	10,380	75.00	10.9	Upper Marker

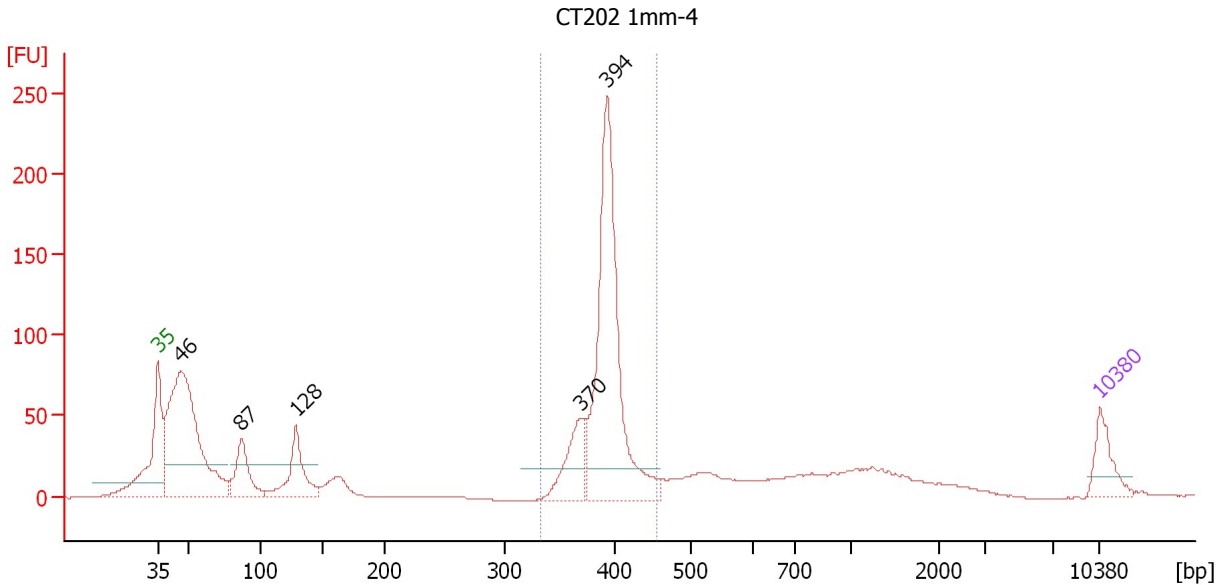
Region table for sample 8 : CT202 Endo-3

From [bp]	To [bp]	Average Size [bp]	Molarity [pmol/l]	Conc. [pg/μl]	Corr. Area	% of Total	Size distribution in CV [%]	Color
332	456	388	1,703.0	435.55	335.4	23	5.4	Blue

Assay Class: High Sensitivity DNA Assay
 Data Path: C:\...ents and Settings\Bioanalyzer\2013-09-18\2013-09-18_007.xad

Created: 9/18/2013 3:27:38 PM
 Modified: 9/18/2013 4:14:19 PM

Electropherogram Summary Continued ...



Setpoint Deviations for sample 9 : CT202 1mm-4

Height Threshold [FU] : 20

Overall Results for sample 9 : CT202 1mm-4

Number of peaks found: 5 Corr. Area 1: 621.6
 Noise: 0.2

Peak table for sample 9 : CT202 1mm-4

Peak	Size [bp]	Conc. [pg/μl]	Molarity [pmol/l]	Observations
1	35	125.00	5,411.3	Lower Marker
2	46	1,028.95	33,748.4	
3	87	184.51	3,231.4	
4	128	216.20	2,557.8	
5	370	178.66	731.9	
6	394	881.57	3,394.3	
7	10,380	75.00	10.9	Upper Marker

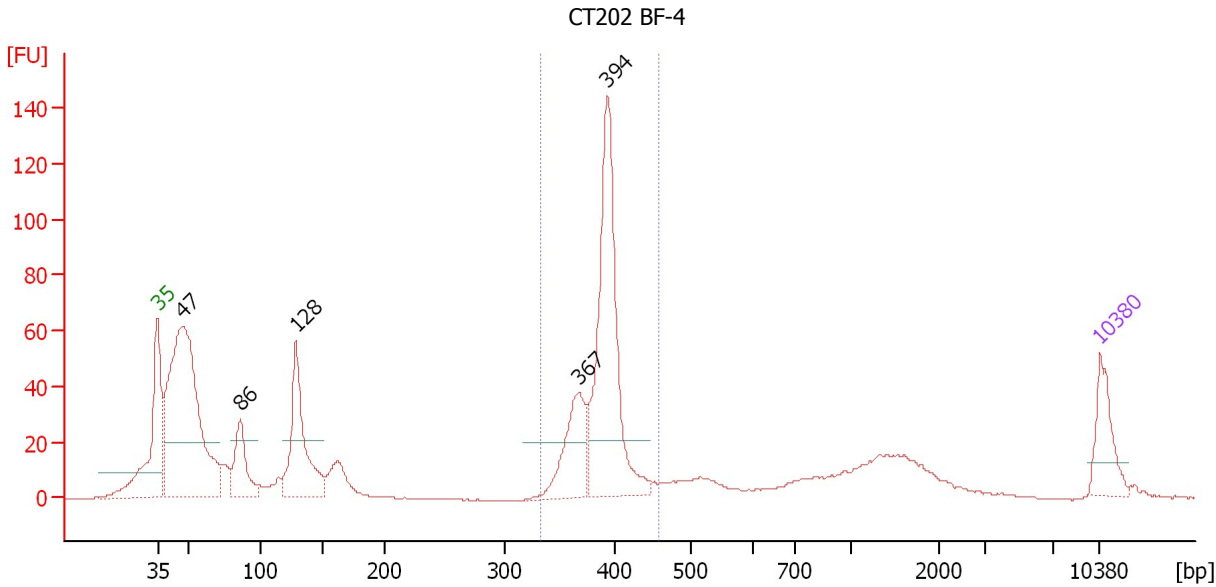
Region table for sample 9 : CT202 1mm-4

From [bp]	To [bp]	Average Size [bp]	Molarity [pmol/l]	Conc. [pg/μl]	Corr. Area	% of Total	Size distribution in CV [%]	Color
333	456	392	3,933.6	1,015.83	621.6	40	4.7	Blue

Assay Class: High Sensitivity DNA Assay
 Data Path: C:\...ents and Settings\Bioanalyzer\2013-09-18\2013-09-18_007.xad

Created: 9/18/2013 3:27:38 PM
 Modified: 9/18/2013 4:14:19 PM

Electropherogram Summary Continued ...



Setpoint Deviations for sample 10 : CT202 BF-4

Height Threshold [FU] : 20

Overall Results for sample 10 : CT202 BF-4

Number of peaks found: 5 Corr. Area 1: 373.3
 Noise: 0.2

Peak table for sample 10 : CT202 BF-4

Peak	Size [bp]	Conc. [pg/μl]	Molarity [pmol/l]	Observations
1	35	125.00	5,411.3	Lower Marker
2	47	882.20	28,202.4	
3	86	139.34	2,462.6	
4	128	285.16	3,368.4	
5	367	173.52	715.7	
6	394	507.56	1,952.2	
7	10,380	75.00	10.9	Upper Marker

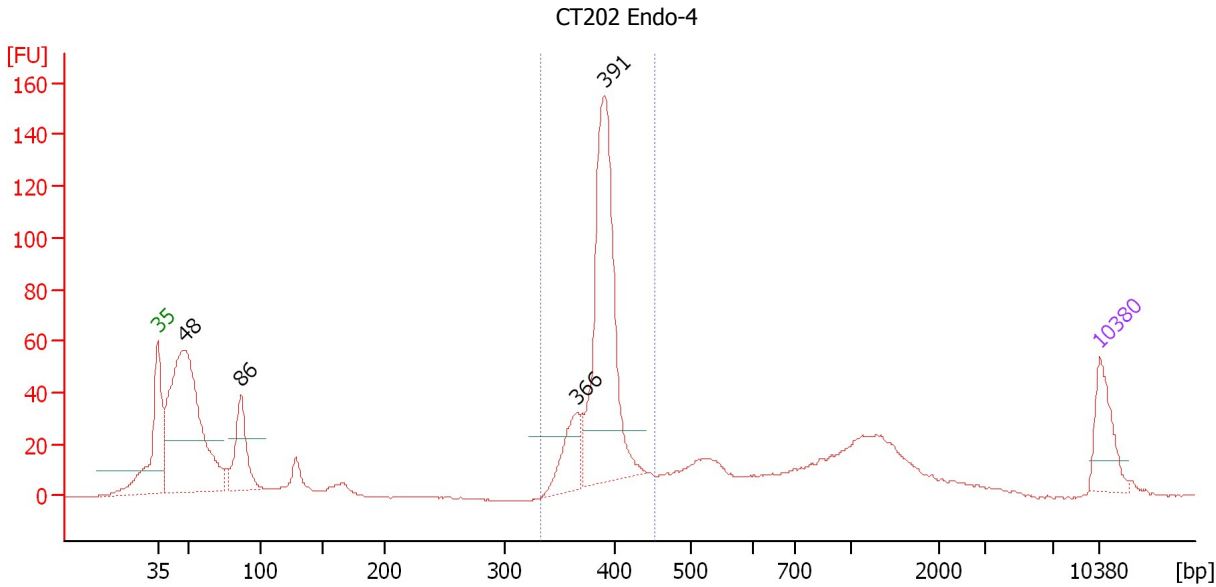
Region table for sample 10 : CT202 BF-4

From [bp]	To [bp]	Average Size [bp]	Molarity [pmol/l]	Conc. [pg/μl]	Corr. Area	% of Total	Size distribution in CV [%]	Color
333	457	388	2,704.5	692.35	373.3	33	4.9	Blue

Assay Class: High Sensitivity DNA Assay
 Data Path: C:\...ents and Settings\Bioanalyzer\2013-09-18\2013-09-18_007.xad

Created: 9/18/2013 3:27:38 PM
 Modified: 9/18/2013 4:14:19 PM

Electropherogram Summary Continued ...



Setpoint Deviations for sample 11 : CT202 Endo-4

Height Threshold [FU] : 20

Overall Results for sample 11 : CT202 Endo-4

Number of peaks found: 4 Corr. Area 1: 429.8
 Noise: 0.2

Peak table for sample 11 : CT202 Endo-4

Peak	Size [bp]	Conc. [pg/μl]	Molarity [pmol/l]	Observations
1	35	125.00	5,411.3	Lower Marker
2	48	737.88	23,177.6	
3	86	161.71	2,839.0	
4	366	99.93	413.8	
5	391	530.57	2,053.9	
6	10,380	75.00	10.9	Upper Marker

Region table for sample 11 : CT202 Endo-4

From [bp]	To [bp]	Average Size [bp]	Molarity [pmol/l]	Conc. [pg/μl]	Corr. Area	% of Total	Size distribution in CV [%]	Color
332	452	389	2,814.7	721.15	429.8	36	4.8	Blue

Assay Class: High Sensitivity DNA Assay
Data Path: C:\...ents and Settings\Bioanalyzer\2013-09-18\2013-09-18_007.xad

Created: 9/18/2013 3:27:38 PM
Modified: 9/18/2013 4:14:19 PM

Gel Image

