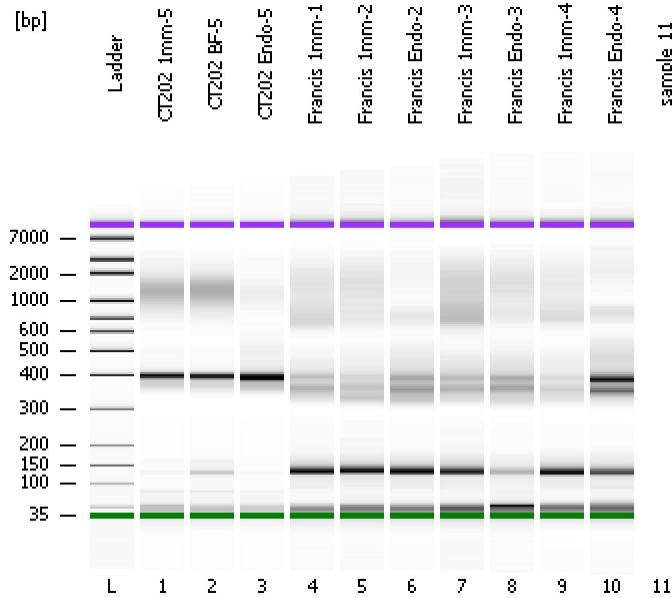


Assay Class: High Sensitivity DNA Assay
Data Path: C:\...ents and Settings\Bioanalyzer\2013-09-18\2013-09-18_008.xad

Created: 9/18/2013 4:15:14 PM
Modified: 9/18/2013 4:55:00 PM

Electrophoresis File Run Summary



Instrument Information:

Instrument Name: DE13701086 Firmware: C.01.069
Serial#: DE13701086 Type: G2938B

Assay Information:

Assay Origin Path: C:\Program Files\Agilent\2100 bioanalyzer\2100 expert\assays\dsDNA\High Sensitivity DNA.xsy
Assay Class: High Sensitivity DNA Assay
Version: 1.03
Assay Comments: Copyright © 2003-2010 Agilent Technologies

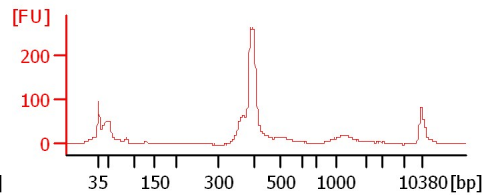
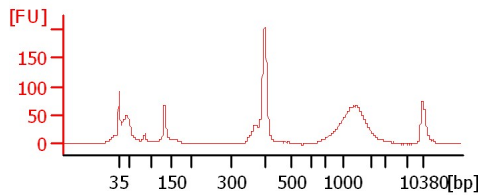
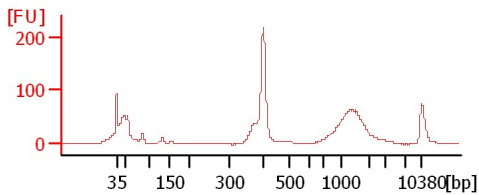
Chip Information:

Chip Lot #:
Reagent Kit Lot #:
Chip Comments:

CT202 1mm-5

CT202 BF-5

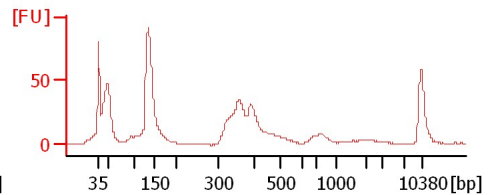
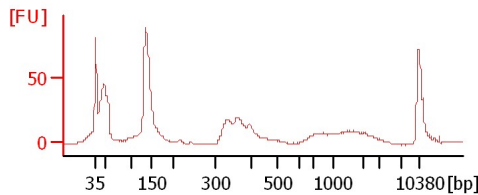
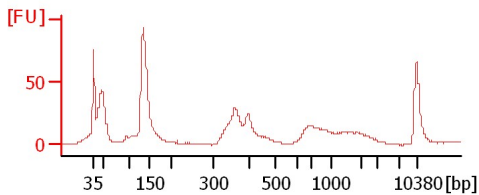
CT202 Endo-5



Francis 1mm-1

Francis 1mm-2

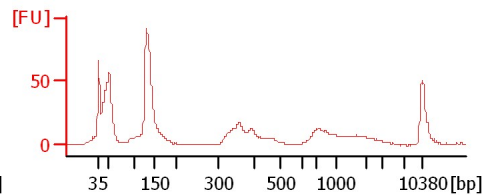
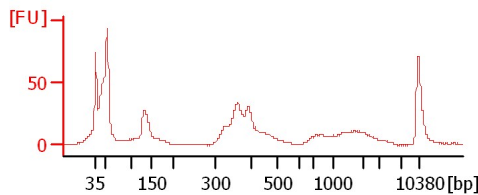
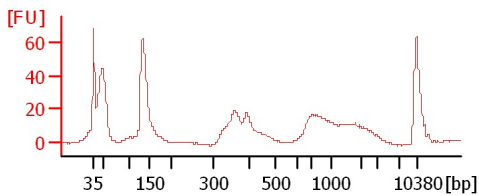
Francis Endo-2



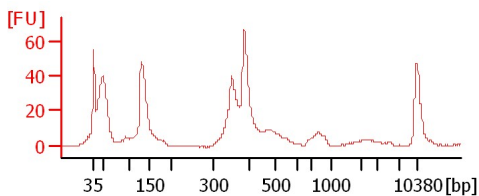
Francis 1mm-3

Francis Endo-3

Francis 1mm-4



Francis Endo-4



Assay Class: High Sensitivity DNA Assay
Data Path: C:\...ents and Settings\Bioanalyzer\2013-09-18\2013-09-18_008.xad

Created: 9/18/2013 4:15:14 PM
Modified: 9/18/2013 4:55:00 PM

Electrophoresis File Run Summary (Chip Summary)

Sample Name	Sample Comment	Rest. Digest	Status	Observation	Result Label	Result Color
CT202 1mm-5		<input type="checkbox"/>	✓			
CT202 BF-5		<input type="checkbox"/>	✓			
CT202 Endo-5		<input type="checkbox"/>	✓			
Francis 1mm-1		<input type="checkbox"/>	✓			
Francis 1mm-2		<input type="checkbox"/>	✓			
Francis Endo-2		<input type="checkbox"/>	✓			
Francis 1mm-3		<input type="checkbox"/>	✓			
Francis Endo-3		<input type="checkbox"/>	✓			
Francis 1mm-4		<input type="checkbox"/>	✓			
Francis Endo-4		<input type="checkbox"/>	✓			
sample 11		<input type="checkbox"/>	✓			
Ladder		<input type="checkbox"/>	✓			

Chip Lot # **Reagent Kit Lot #**

Chip Comments :

Assay Class: High Sensitivity DNA Assay
Data Path: C:\...ents and Settings\Bioanalyzer\2013-09-18\2013-09-18_008.xad

Created: 9/18/2013 4:15:14 PM
Modified: 9/18/2013 4:55:00 PM

Electrophoresis Assay Details

General Analysis Settings

Number of Available Sample and Ladder Wells (Max.) : 12
Minimum Visible Range [s] : 32
Maximum Visible Range [s] : 138
Start Analysis Time Range [s] : 33
End Analysis Time Range [s] : 137.5
Ladder Concentration [pg/μl] : 1950
Uses Standard Area for Ladder Fragments
Lower Marker Concentration [pg/μl] : 125
Upper Marker Concentration [pg/μl] : 75
Used Upper Marker for Quantitation
Standard Curve Fit is Point to Point
Show Data Aligned to Lower and Upper Marker

Integrator Settings

Integration Start Time [s] : 33.05
Integration End Time [s] : 137
Slope Threshold : 0.8
Height Threshold [FU] : 5
Area Threshold : 0.1
Width Threshold [s] : 0.6
Baseline Plateau [s] : 0.5

Filter Settings

Filter Width [s] : 0.5
Polynomial Order : 4

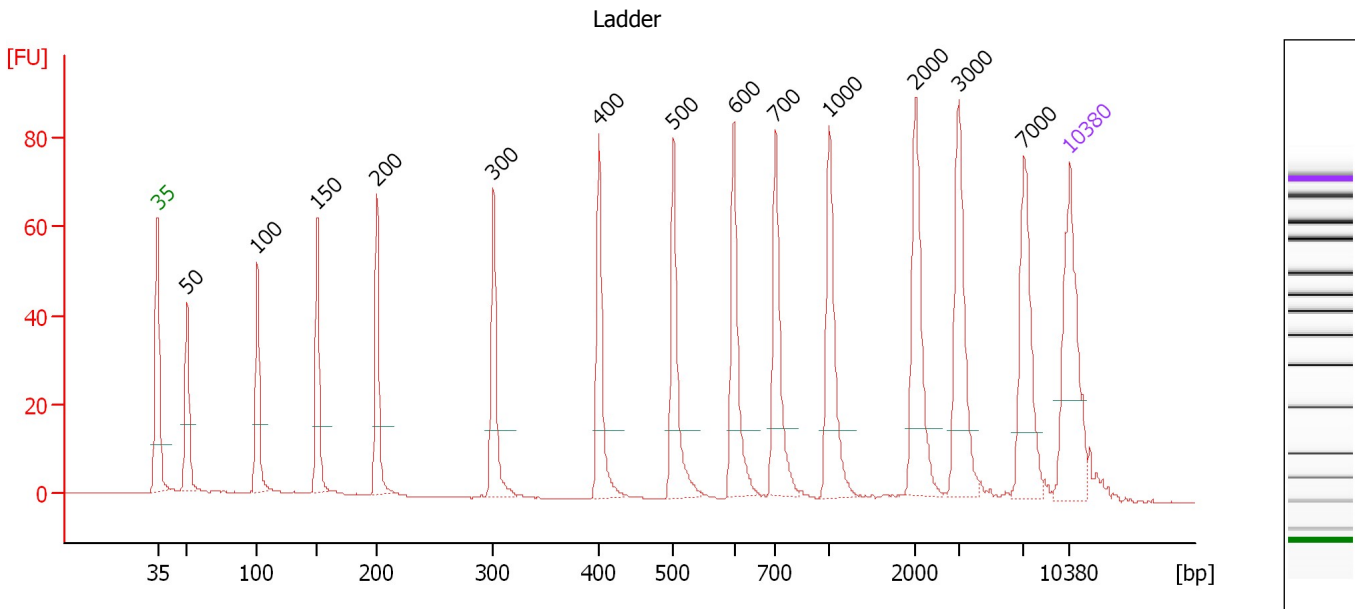
Ladder

Ladder Peak	Size	Area
1	35	160
2	50	210
3	100	208
4	150	221
5	200	242
6	300	270
7	400	305
8	500	306
9	600	336
10	700	321
11	1000	366
12	2000	413
13	3000	411
14	7000	400
15	10380	214

Assay Class: High Sensitivity DNA Assay
 Data Path: C:\...ents and Settings\Bioanalyzer\2013-09-18\2013-09-18_008.xad

Created: 9/18/2013 4:15:14 PM
 Modified: 9/18/2013 4:55:00 PM

Electropherogram Summary



Overall Results for Ladder

Noise: 0.1

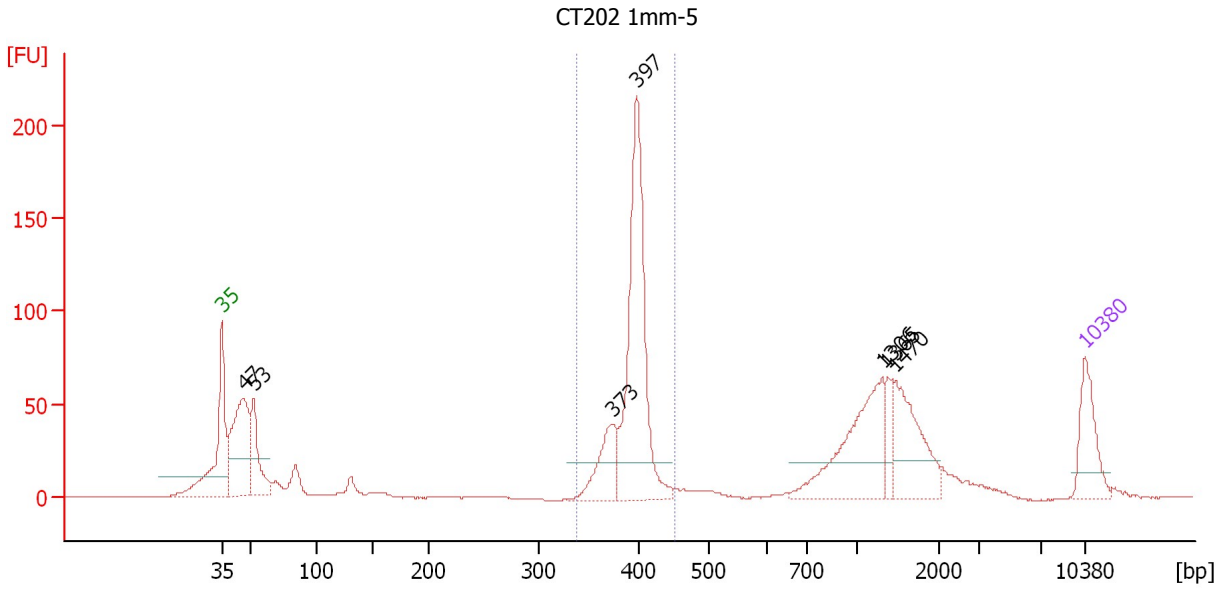
Peak table for Ladder

Peak	Size [bp]	Conc. [pg/μl]	Molarity [pmol/l]	Observations
1	35	125.00	5,411.3	Lower Marker
2	50	150.00	4,545.5	Ladder Peak
3	100	150.00	2,272.7	Ladder Peak
4	150	150.00	1,515.2	Ladder Peak
5	200	150.00	1,136.4	Ladder Peak
6	300	150.00	757.6	Ladder Peak
7	400	150.00	568.2	Ladder Peak
8	500	150.00	454.5	Ladder Peak
9	600	150.00	378.8	Ladder Peak
10	700	150.00	324.7	Ladder Peak
11	1,000	150.00	227.3	Ladder Peak
12	2,000	150.00	113.6	Ladder Peak
13	3,000	150.00	75.8	Ladder Peak
14	7,000	150.00	32.5	Ladder Peak
15	10,380	75.00	10.9	Upper Marker

Assay Class: High Sensitivity DNA Assay
 Data Path: C:\...ents and Settings\Bioanalyzer\2013-09-18\2013-09-18_008.xad

Created: 9/18/2013 4:15:14 PM
 Modified: 9/18/2013 4:55:00 PM

Electropherogram Summary Continued ...



Setpoint Deviations for sample 1 : CT202 1mm-5

Height Threshold [FU] : 20

Overall Results for sample 1 : CT202 1mm-5

Number of peaks found: 7 Corr. Area 1: 509.9
 Noise: 0.2

Peak table for sample 1 : CT202 1mm-5

Peak	Size [bp]	Conc. [pg/μl]	Molarity [pmol/l]	Observations
1	35	125.00	5,411.3	Lower Marker
2	47	308.08	9,985.6	
3	53	149.09	4,257.3	
4	373	110.31	447.9	
5	397	473.56	1,806.6	
6	1,306	213.16	247.2	
7	1,365	41.15	45.7	
8	1,470	140.16	144.5	
9	10,380	75.00	10.9	Upper Marker

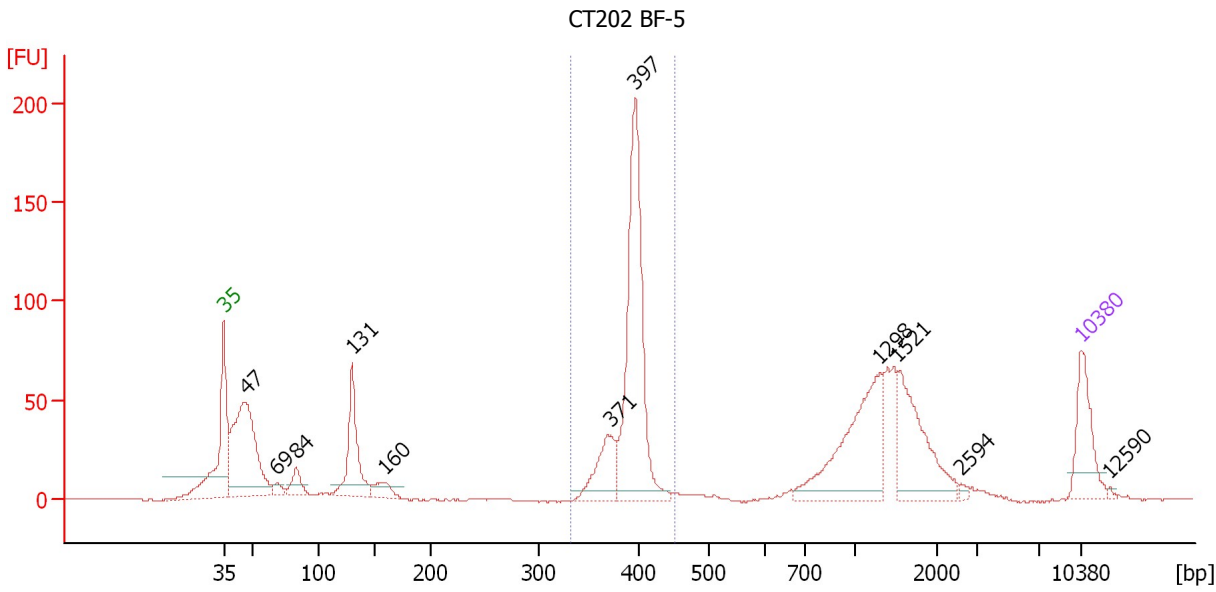
Region table for sample 1 : CT202 1mm-5

From [bp]	To [bp]	Average Size [bp]	Molarity [pmol/l]	Conc. [pg/μl]	Corr. Area	% of Total	Size distribution in CV [%]	Color
337	452	393	2,182.8	566.05	509.9	37	4.2	Blue

Assay Class: High Sensitivity DNA Assay
 Data Path: C:\...ents and Settings\Bioanalyzer\2013-09-18\2013-09-18_008.xad

Created: 9/18/2013 4:15:14 PM
 Modified: 9/18/2013 4:55:00 PM

Electropherogram Summary Continued ...



Overall Results for sample 2 : CT202 BF-5

Number of peaks found: 11 Corr. Area 1: 455.4
 Noise: 0.2

Peak table for sample 2 : CT202 BF-5

Peak	Size [bp]	Conc. [pg/μl]	Molarity [pmol/l]	Observations
1	35	125.00	5,411.3	Lower Marker
2	47	398.26	12,888.4	
3	69	18.19	399.9	
4	84	41.05	741.8	
5	131	164.75	1,907.2	
6	160	35.17	333.4	
7	371	97.18	396.6	
8	397	423.54	1,618.4	
9	1,298	211.65	247.1	
10	1,521	146.89	146.3	
11	2,594	4.94	2.9	
12	10,380	75.00	10.9	Upper Marker
13	12,590	0.00	0.0	

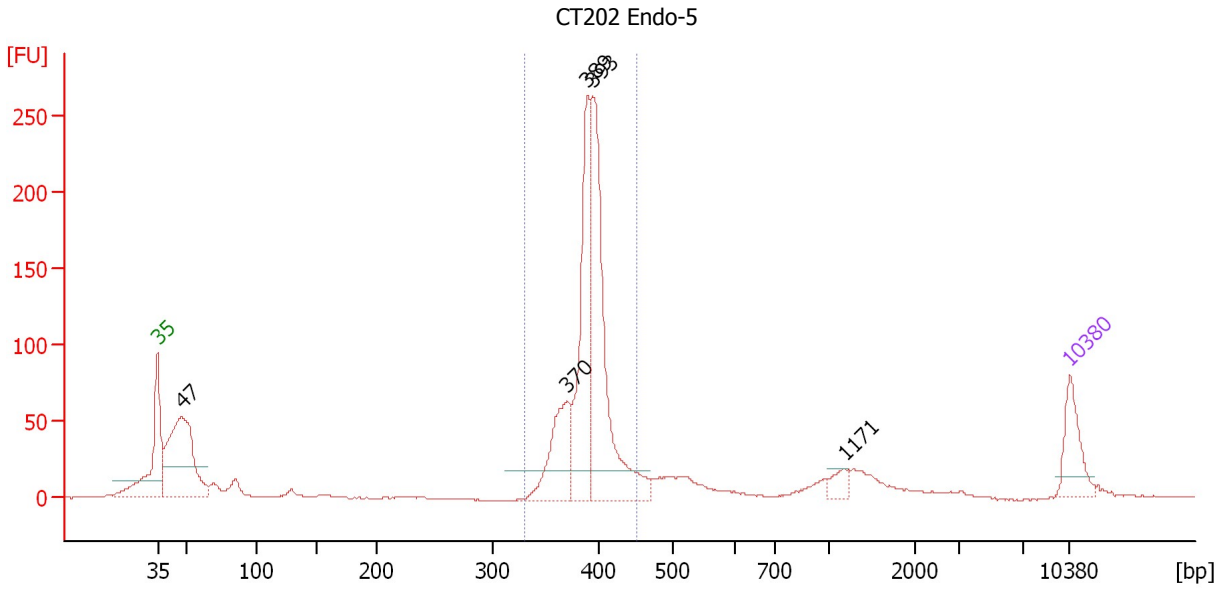
Region table for sample 2 : CT202 BF-5

From [bp]	To [bp]	Average Size [bp]	Molarity [pmol/l]	Conc. [pg/μl]	Corr. Area	% of Total	Size distribution in CV [%]	Color
332	453	392	1,993.2	514.88	455.4	32	4.1	Blue

Assay Class: High Sensitivity DNA Assay
 Data Path: C:\...ents and Settings\Bioanalyzer\2013-09-18\2013-09-18_008.xad

Created: 9/18/2013 4:15:14 PM
 Modified: 9/18/2013 4:55:00 PM

Electropherogram Summary Continued ...



Setpoint Deviations for sample 3 : CT202 Endo-5

Height Threshold [FU] : 20

Overall Results for sample 3 : CT202 Endo-5

Number of peaks found: 5 Corr. Area 1: 873.1
 Noise: 0.2

Peak table for sample 3 : CT202 Endo-5

Peak	Size [bp]	Conc. [pg/μl]	Molarity [pmol/l]	Observations
1	35	125.00	5,411.3	Lower Marker
2	47	435.59	13,953.5	
3	370	184.02	752.9	
4	389	357.79	1,394.0	
5	393	498.30	1,920.0	
6	1,171	25.86	33.4	
7	10,380	75.00	10.9	Upper Marker

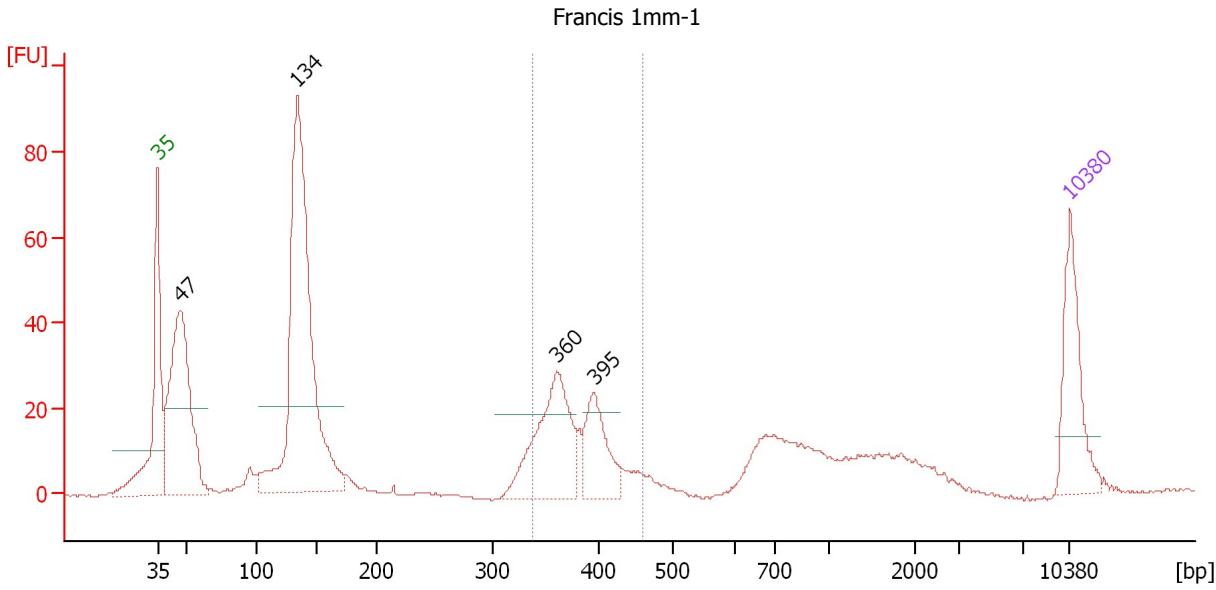
Region table for sample 3 : CT202 Endo-5

From [bp]	To [bp]	Average Size [bp]	Molarity [pmol/l]	Conc. [pg/μl]	Corr. Area	% of Total	Size distribution in CV [%]	Color
330	450	391	3,808.2	980.00	873.1	61	4.7	Blue

Assay Class: High Sensitivity DNA Assay
 Data Path: C:\...ents and Settings\Bioanalyzer\2013-09-18\2013-09-18_008.xad

Created: 9/18/2013 4:15:14 PM
 Modified: 9/18/2013 4:55:00 PM

Electropherogram Summary Continued ...



Setpoint Deviations for sample 4 : Francis 1mm-1

Height Threshold [FU] : 20

Overall Results for sample 4 : Francis 1mm-1

Number of peaks found: 4 Corr. Area 1: 166.1
 Noise: 0.3

Peak table for sample 4 : Francis 1mm-1

Peak	Size [bp]	Conc. [pg/μl]	Molarity [pmol/l]	Observations
1	35	125.00	5,411.3	Lower Marker
2	47	345.51	11,243.9	
3	134	578.93	6,564.8	
4	360	166.48	701.5	
5	395	81.22	311.2	
6	10,380	75.00	10.9	Upper Marker

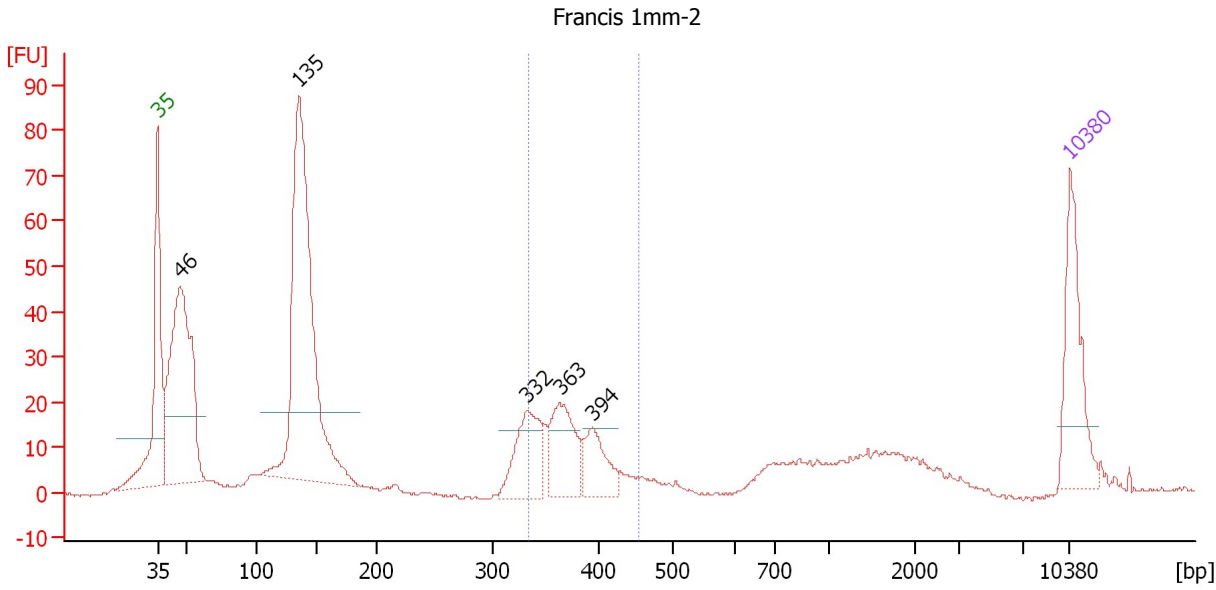
Region table for sample 4 : Francis 1mm-1

From [bp]	To [bp]	Average Size [bp]	Molarity [pmol/l]	Conc. [pg/μl]	Corr. Area	% of Total	Size distribution in CV [%]	Color
337	458	379	878.6	218.86	166.1	20	7.2	Blue

Assay Class: High Sensitivity DNA Assay
 Data Path: C:\...ents and Settings\Bioanalyzer\2013-09-18\2013-09-18_008.xad

Created: 9/18/2013 4:15:14 PM
 Modified: 9/18/2013 4:55:00 PM

Electropherogram Summary Continued ...



Setpoint Deviations for sample 5 : Francis 1mm-2

Height Threshold [FU] : 15

Overall Results for sample 5 : Francis 1mm-2

Number of peaks found: 5 Corr. Area 1: 135.5
 Noise: 0.4

Peak table for sample 5 : Francis 1mm-2

Peak	Size [bp]	Conc. [pg/μl]	Molarity [pmol/l]	Observations
1	35	125.00	5,411.3	Lower Marker
2	46	355.82	11,611.3	
3	135	496.81	5,581.2	
4	332	82.97	379.1	
5	363	79.98	333.9	
6	394	49.45	190.3	
7	10,380	75.00	10.9	Upper Marker

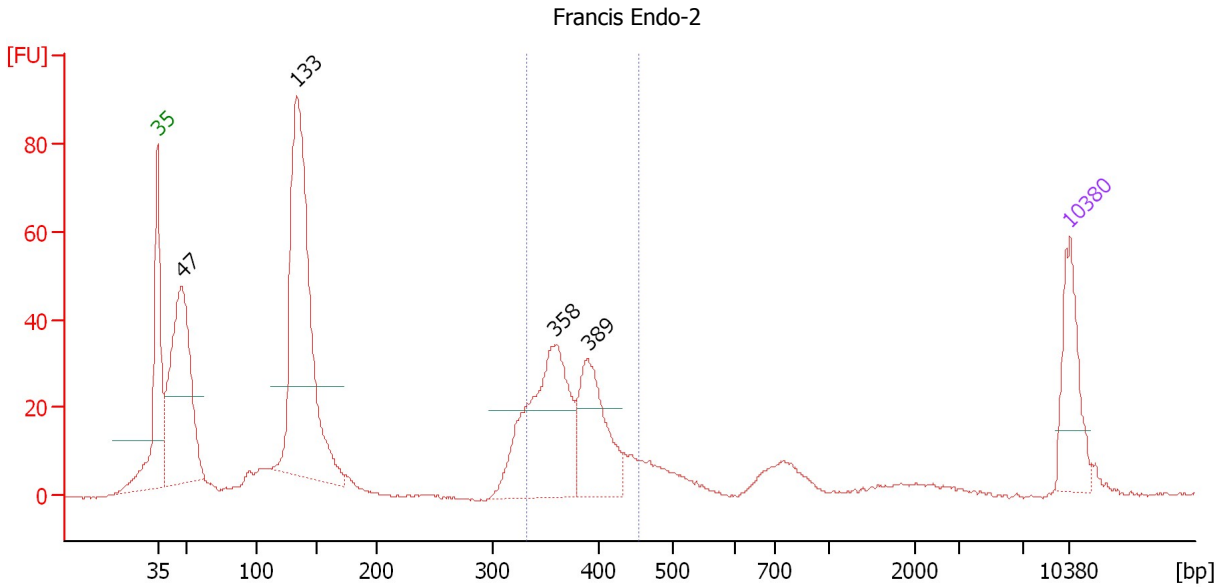
Region table for sample 5 : Francis 1mm-2

From [bp]	To [bp]	Average Size [bp]	Molarity [pmol/l]	Conc. [pg/μl]	Corr. Area	% of Total	Size distribution in CV [%]	Color
332	453	373	717.4	175.85	135.5	16	7.4	Blue

Assay Class: High Sensitivity DNA Assay
 Data Path: C:\...ents and Settings\Bioanalyzer\2013-09-18\2013-09-18_008.xad

Created: 9/18/2013 4:15:14 PM
 Modified: 9/18/2013 4:55:00 PM

Electropherogram Summary Continued ...



Setpoint Deviations for sample 6 : Francis Endo-2

Height Threshold [FU] : 20

Overall Results for sample 6 : Francis Endo-2

Number of peaks found: 4 Corr. Area 1: 250.6
 Noise: 0.2

Peak table for sample 6 : Francis Endo-2

Peak	Size [bp]	Conc. [pg/μl]	Molarity [pmol/l]	Observations
1	35	125.00	5,411.3	Lower Marker
2	47	394.23	12,672.6	
3	133	581.40	6,629.6	
4	358	277.31	1,174.6	
5	389	146.18	568.8	
6	10,380	75.00	10.9	Upper Marker

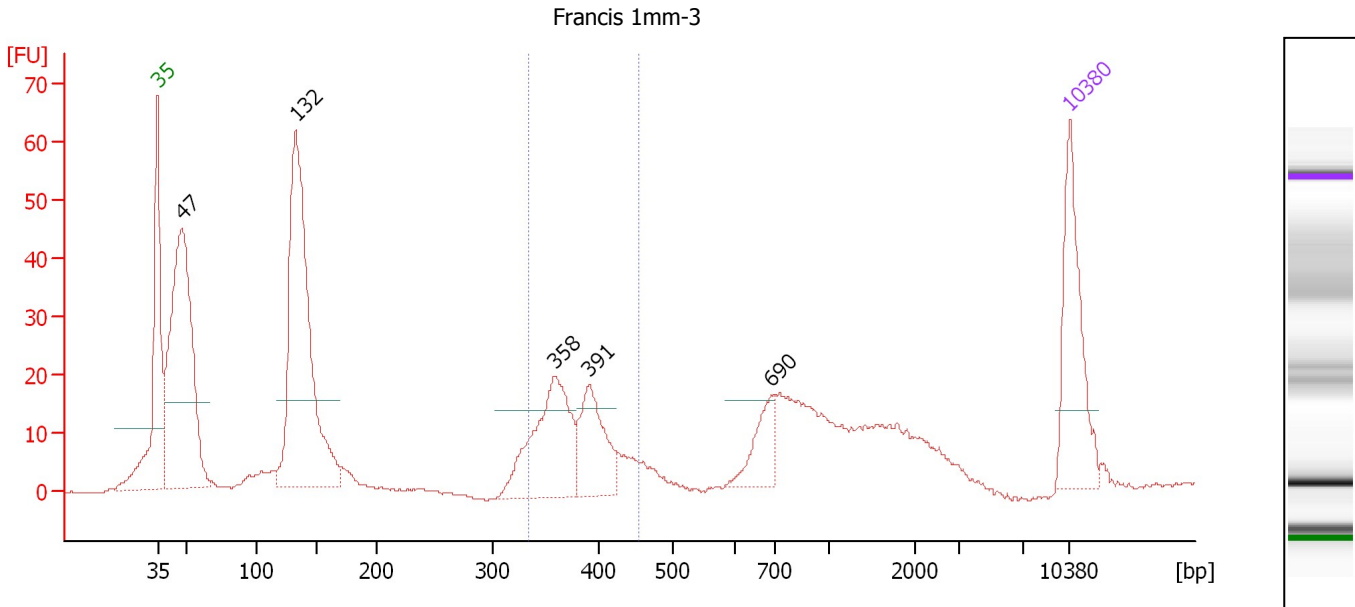
Region table for sample 6 : Francis Endo-2

From [bp]	To [bp]	Average Size [bp]	Molarity [pmol/l]	Conc. [pg/μl]	Corr. Area	% of Total	Size distribution in CV [%]	Color
331	452	377	1,518.5	375.51	250.6	27	7.6	Blue

Assay Class: High Sensitivity DNA Assay
 Data Path: C:\...ents and Settings\Bioanalyzer\2013-09-18\2013-09-18_008.xad

Created: 9/18/2013 4:15:14 PM
 Modified: 9/18/2013 4:55:00 PM

Electropherogram Summary Continued ...



Setpoint Deviations for sample 7 : Francis 1mm-3

Height Threshold [FU] : 15

Overall Results for sample 7 : Francis 1mm-3

Number of peaks found: 5 Corr. Area 1: 136.4
 Noise: 0.2

Peak table for sample 7 : Francis 1mm-3

Peak	Size [bp]	Conc. [pg/μl]	Molarity [pmol/l]	Observations
1	35	125.00	5,411.3	Lower Marker
2	47	363.38	11,625.1	
3	132	366.26	4,204.3	
4	358	123.84	524.4	
5	391	69.57	269.4	
6	690	36.01	79.0	
7	10,380	75.00	10.9	Upper Marker

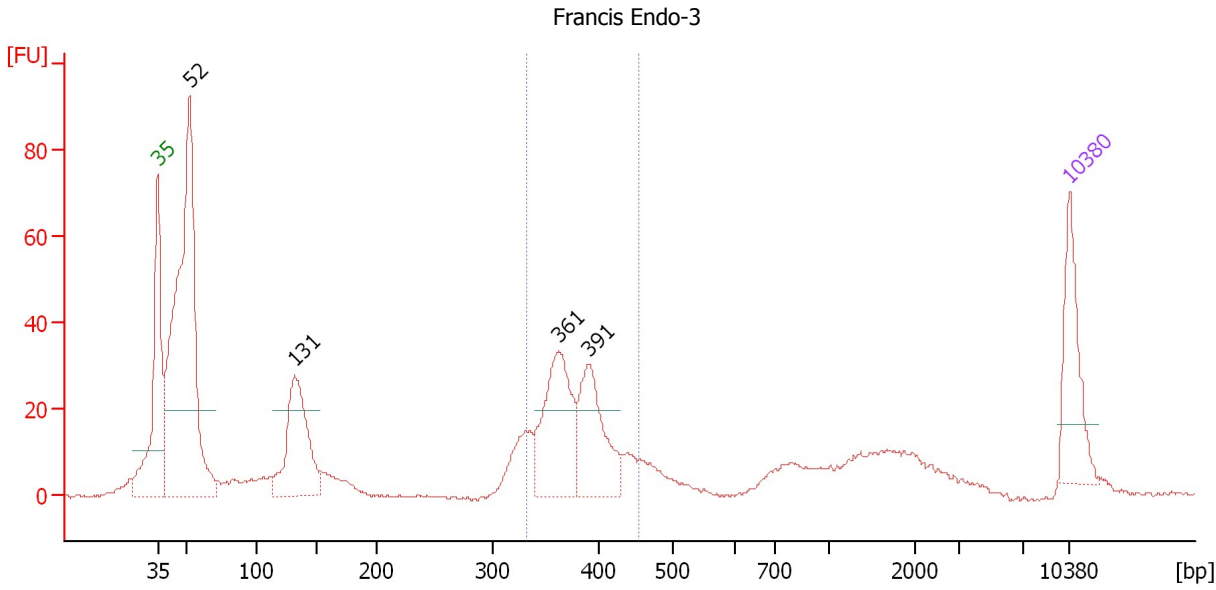
Region table for sample 7 : Francis 1mm-3

From [bp]	To [bp]	Average Size [bp]	Molarity [pmol/l]	Conc. [pg/μl]	Corr. Area	% of Total	Size distribution in CV [%]	Color
333	454	380	713.2	177.79	136.4	17	7.6	Blue

Assay Class: High Sensitivity DNA Assay
 Data Path: C:\...ents and Settings\Bioanalyzer\2013-09-18\2013-09-18_008.xad

Created: 9/18/2013 4:15:14 PM
 Modified: 9/18/2013 4:55:00 PM

Electropherogram Summary Continued ...



Setpoint Deviations for sample 8 : Francis Endo-3

Height Threshold [FU] : 20

Overall Results for sample 8 : Francis Endo-3

Number of peaks found: 4 Corr. Area 1: 223.9
 Noise: 0.4

Peak table for sample 8 : Francis Endo-3

Peak	Size [bp]	Conc. [pg/μl]	Molarity [pmol/l]	Observations
1	35	125.00	5,411.3	Lower Marker
2	52	668.01	19,545.9	
3	131	192.12	2,223.9	
4	361	167.40	701.7	
5	391	125.69	487.5	
6	10,380	75.00	10.9	Upper Marker

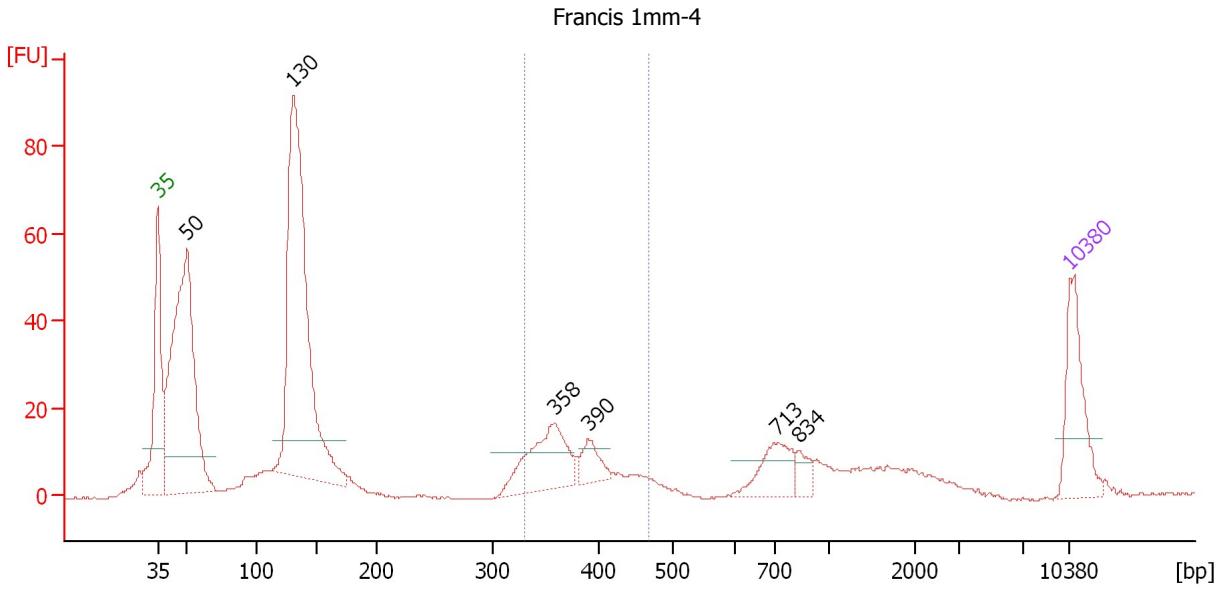
Region table for sample 8 : Francis Endo-3

From [bp]	To [bp]	Average Size [bp]	Molarity [pmol/l]	Conc. [pg/μl]	Corr. Area	% of Total	Size distribution in CV [%]	Color
331	453	379	1,311.5	326.36	223.9	25	7.5	Blue

Assay Class: High Sensitivity DNA Assay
 Data Path: C:\...ents and Settings\Bioanalyzer\2013-09-18\2013-09-18_008.xad

Created: 9/18/2013 4:15:14 PM
 Modified: 9/18/2013 4:55:00 PM

Electropherogram Summary Continued ...



Setpoint Deviations for sample 9 : Francis 1mm-4

Height Threshold [FU] : 8

Overall Results for sample 9 : Francis 1mm-4

Number of peaks found: 6 Corr. Area 1: 117.4
 Noise: 0.2

Peak table for sample 9 : Francis 1mm-4

Peak	Size [bp]	Conc. [pg/μl]	Molarity [pmol/l]	Observations
1	35	125.00	5,411.3	Lower Marker
2	50	528.55	15,942.3	
3	130	612.31	7,142.0	
4	358	114.67	485.3	
5	390	32.12	124.8	
6	713	57.02	121.1	
7	834	18.92	34.4	
8	10,380	75.00	10.9	Upper Marker

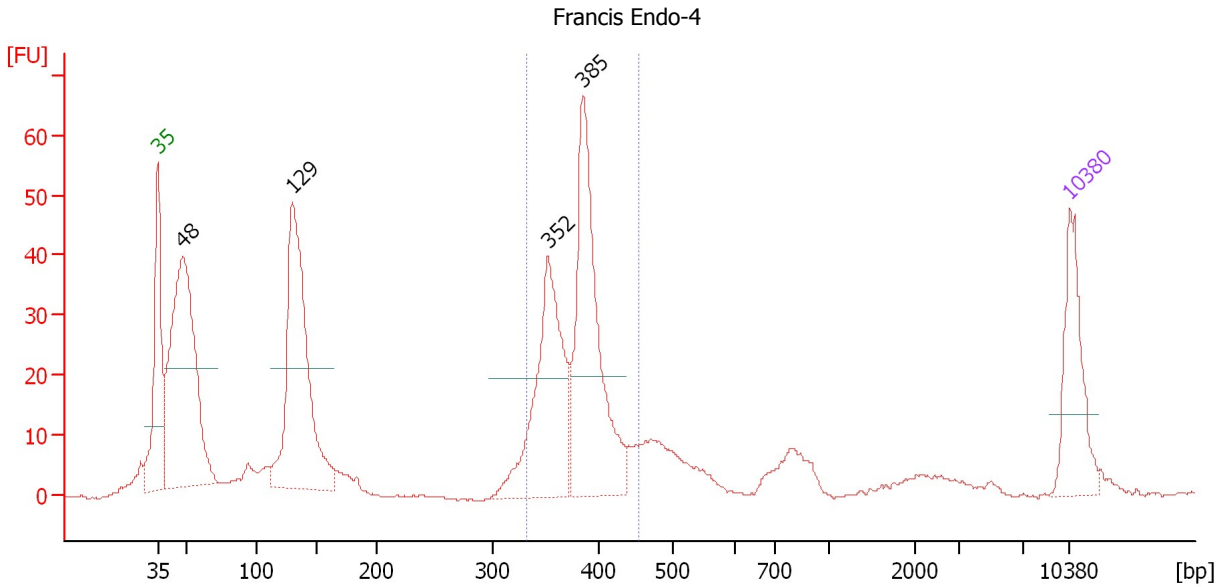
Region table for sample 9 : Francis 1mm-4

From [bp]	To [bp]	Average Size [bp]	Molarity [pmol/l]	Conc. [pg/μl]	Corr. Area	% of Total	Size distribution in CV [%]	Color
330	466	379	772.9	191.65	117.4	13	8.9	Blue

Assay Class: High Sensitivity DNA Assay
 Data Path: C:\...ents and Settings\Bioanalyzer\2013-09-18\2013-09-18_008.xad

Created: 9/18/2013 4:15:14 PM
 Modified: 9/18/2013 4:55:00 PM

Electropherogram Summary Continued ...



Setpoint Deviations for sample 10 : Francis Endo-4

Height Threshold [FU] : 20

Overall Results for sample 10 : Francis Endo-4

Number of peaks found: 4 Corr. Area 1: 282.7
 Noise: 0.2

Peak table for sample 10 : Francis Endo-4

Peak	Size [bp]	Conc. [pg/μl]	Molarity [pmol/l]	Observations
1	35	125.00	5,411.3	Lower Marker
2	48	439.66	13,863.1	
3	129	366.72	4,301.2	
4	352	228.20	982.3	
5	385	270.22	1,062.9	
6	10,380	75.00	10.9	Upper Marker

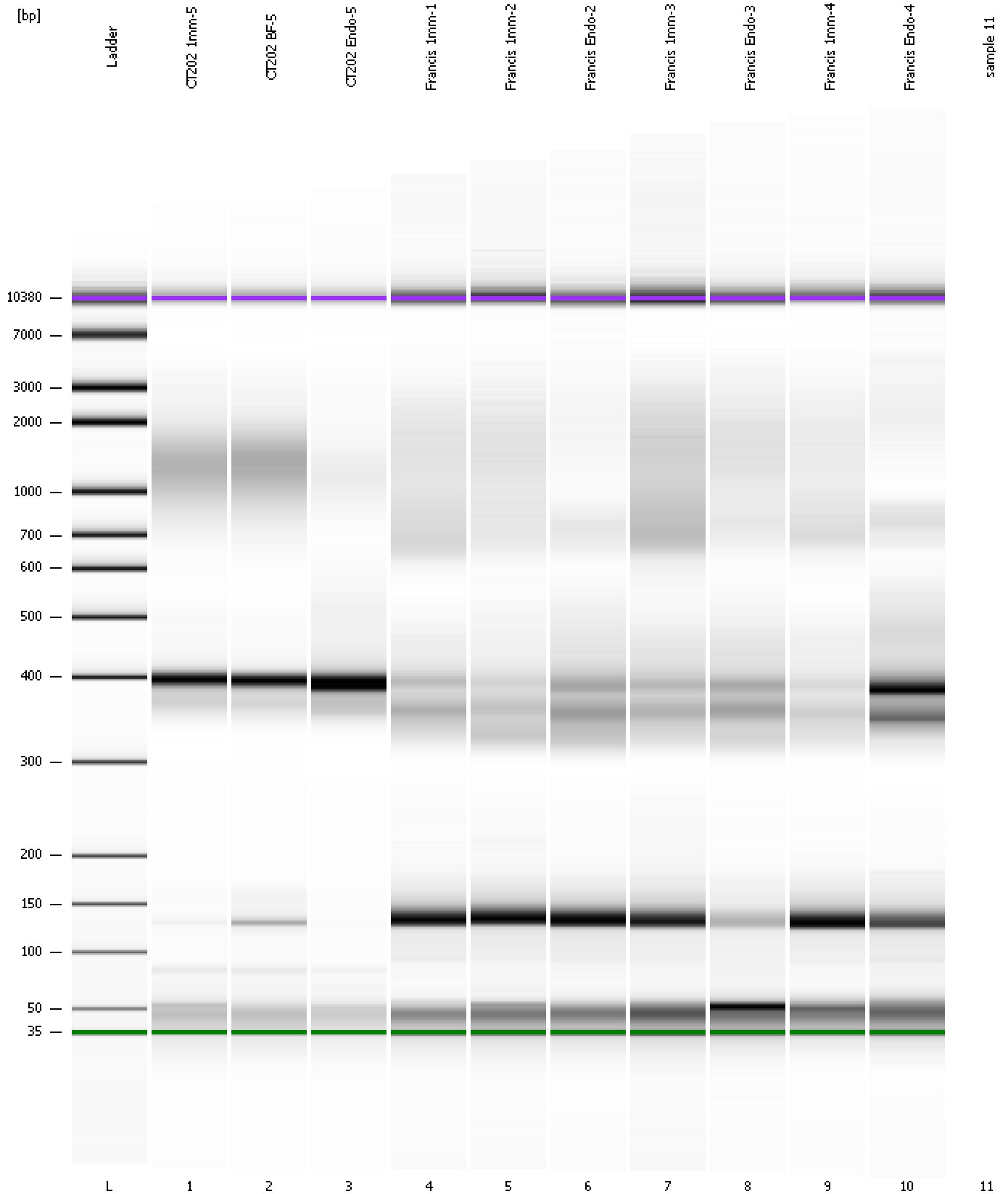
Region table for sample 10 : Francis Endo-4

From [bp]	To [bp]	Average Size [bp]	Molarity [pmol/l]	Conc. [pg/μl]	Corr. Area	% of Total	Size distribution in CV [%]	Color
332	453	379	1,919.3	478.72	282.7	36	6.8	Blue

Assay Class: High Sensitivity DNA Assay
Data Path: C:\...ents and Settings\Bioanalyzer\2013-09-18\2013-09-18_008.xad

Created: 9/18/2013 4:15:14 PM
Modified: 9/18/2013 4:55:00 PM

Gel Image



Assay Class: High Sensitivity DNA Assay
Data Path: C:\...ents and Settings\Bioanalyzer\2013-09-18\2013-09-18_008.xad

Created: 9/18/2013 4:15:14 PM
Modified: 9/18/2013 4:55:00 PM

Invalid Samples

Sample 11 has not been run, no results available.