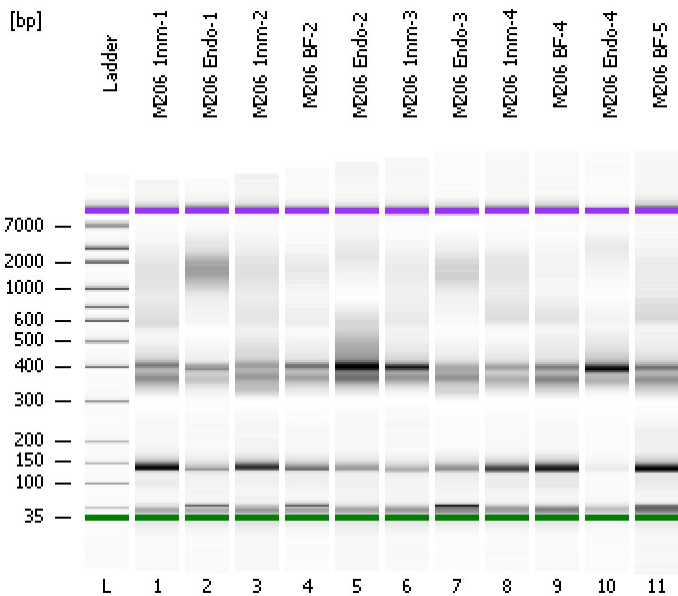


Assay Class: High Sensitivity DNA Assay
Data Path: C:\...ents and Settings\Bioanalyzer\2013-09-19\2013-09-19_001.xad

Created: 9/19/2013 9:19:03 AM
Modified: 9/19/2013 10:05:05 AM

Electrophoresis File Run Summary



Instrument Information:

Instrument Name: DE13701086 Firmware: C.01.069
Serial#: DE13701086 Type: G2938B

Assay Information:

Assay Origin Path: C:\Program Files\Agilent\2100 bioanalyzer\2100 expert\assays\dsDNA\High Sensitivity DNA.xsy
Assay Class: High Sensitivity DNA Assay
Version: 1.03
Assay Comments: Copyright © 2003-2010 Agilent Technologies

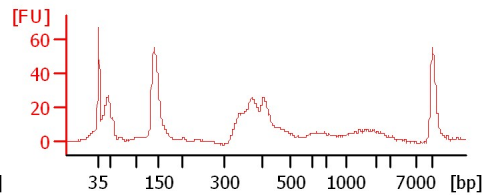
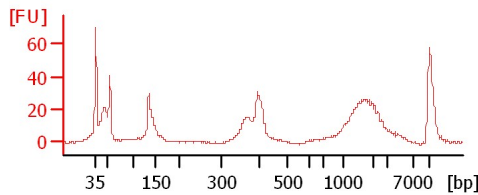
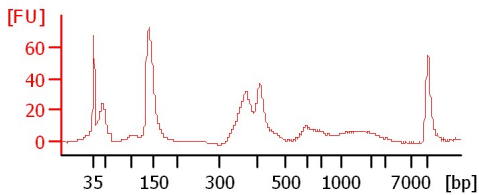
Chip Information:

Chip Lot #: Reagent Kit Lot #: Chip Comments:

M206 1mm-1

M206 Endo-1

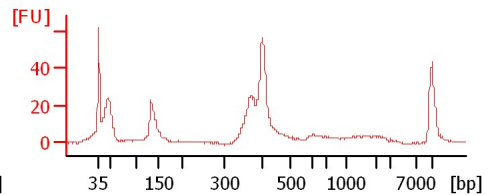
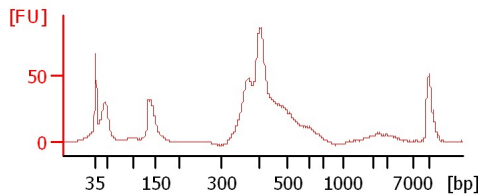
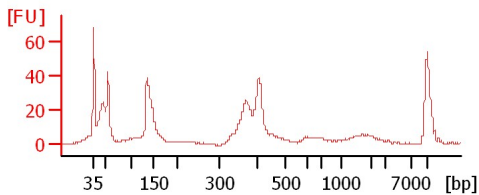
M206 1mm-2



M206 BF-2

M206 Endo-2

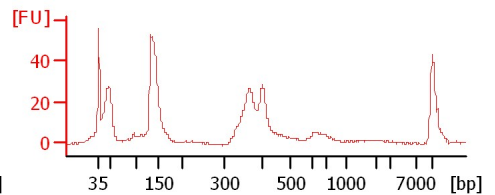
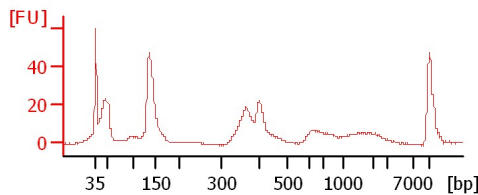
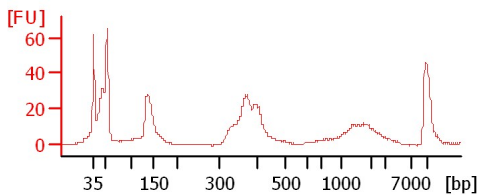
M206 1mm-3



M206 Endo-3

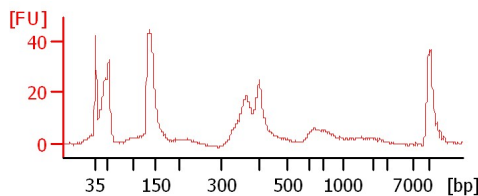
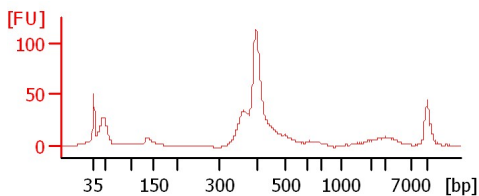
M206 1mm-4

M206 BF-4



M206 Endo-4

M206 BF-5



Assay Class: High Sensitivity DNA Assay
Data Path: C:\...ents and Settings\Bioanalyzer\2013-09-19\2013-09-19_001.xad

Created: 9/19/2013 9:19:03 AM
Modified: 9/19/2013 10:05:05 AM

Electrophoresis File Run Summary (Chip Summary)

Sample Name	Sample Comment	Rest. Digest	Status	Observation	Result Label	Result Color
M206 1mm-1		<input type="checkbox"/>	✓			
M206 Endo-1		<input type="checkbox"/>	✓			
M206 1mm-2		<input type="checkbox"/>	✓			
M206 BF-2		<input type="checkbox"/>	✓			
M206 Endo-2		<input type="checkbox"/>	✓			
M206 1mm-3		<input type="checkbox"/>	✓			
M206 Endo-3		<input type="checkbox"/>	✓			
M206 1mm-4		<input type="checkbox"/>	✓			
M206 BF-4		<input type="checkbox"/>	✓			
M206 Endo-4		<input type="checkbox"/>	✓			
M206 BF-5		<input type="checkbox"/>	✓			
Ladder		<input type="checkbox"/>	✓			

Chip Lot #

Reagent Kit Lot #

Chip Comments :

Assay Class: High Sensitivity DNA Assay
 Data Path: C:\...ents and Settings\Bioanalyzer\2013-09-19\2013-09-19_001.xad

Created: 9/19/2013 9:19:03 AM
 Modified: 9/19/2013 10:05:05 AM

Electrophoresis Assay Details

General Analysis Settings

Number of Available Sample and Ladder Wells (Max.) : 12
 Minimum Visible Range [s] : 32
 Maximum Visible Range [s] : 138
 Start Analysis Time Range [s] : 33
 End Analysis Time Range [s] : 137.5
 Ladder Concentration [pg/μl] : 1950
 Uses Standard Area for Ladder Fragments
 Lower Marker Concentration [pg/μl] : 125
 Upper Marker Concentration [pg/μl] : 75
 Used Upper Marker for Quantitation
 Standard Curve Fit is Point to Point
 Show Data Aligned to Lower and Upper Marker

Integrator Settings

Integration Start Time [s] : 33.05
 Integration End Time [s] : 137
 Slope Threshold : 0.8
 Height Threshold [FU] : 5
 Area Threshold : 0.1
 Width Threshold [s] : 0.6
 Baseline Plateau [s] : 0.5

Filter Settings

Filter Width [s] : 0.5
 Polynomial Order : 4

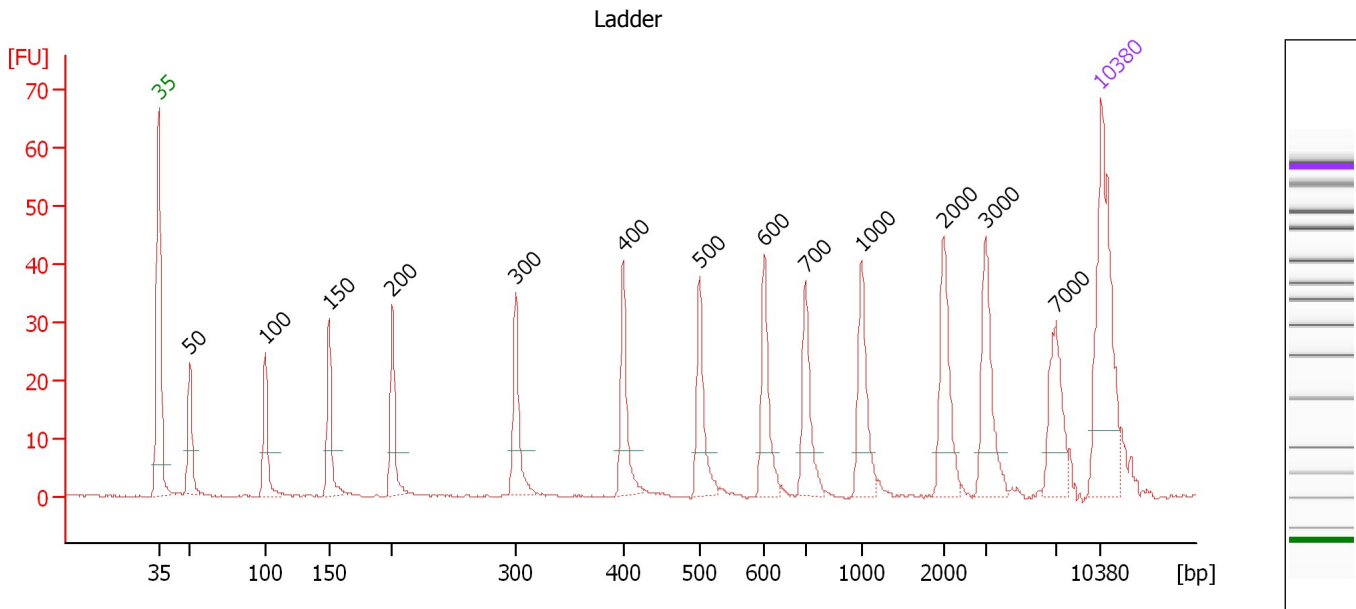
Ladder

Ladder Peak	Size	Area
1	35	160
2	50	210
3	100	208
4	150	221
5	200	242
6	300	270
7	400	305
8	500	306
9	600	336
10	700	321
11	1000	366
12	2000	413
13	3000	411
14	7000	400
15	10380	214

Assay Class: High Sensitivity DNA Assay
 Data Path: C:\...ents and Settings\Bioanalyzer\2013-09-19\2013-09-19_001.xad

Created: 9/19/2013 9:19:03 AM
 Modified: 9/19/2013 10:05:05 AM

Electropherogram Summary



Overall Results for Ladder

Noise: 0.2

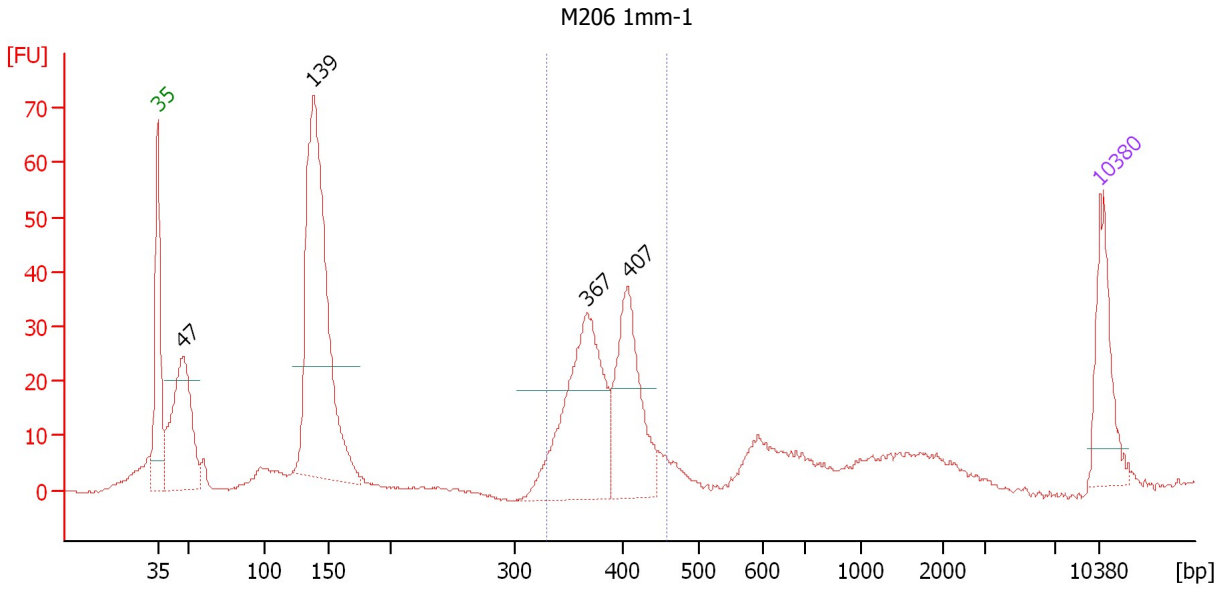
Peak table for Ladder

Peak	Size [bp]	Conc. [pg/μl]	Molarity [pmol/l]	Observations
1	35	125.00	5,411.3	Lower Marker
2	50	150.00	4,545.5	Ladder Peak
3	100	150.00	2,272.7	Ladder Peak
4	150	150.00	1,515.2	Ladder Peak
5	200	150.00	1,136.4	Ladder Peak
6	300	150.00	757.6	Ladder Peak
7	400	150.00	568.2	Ladder Peak
8	500	150.00	454.5	Ladder Peak
9	600	150.00	378.8	Ladder Peak
10	700	150.00	324.7	Ladder Peak
11	1,000	150.00	227.3	Ladder Peak
12	2,000	150.00	113.6	Ladder Peak
13	3,000	150.00	75.8	Ladder Peak
14	7,000	150.00	32.5	Ladder Peak
15	10,380	75.00	10.9	Upper Marker

Assay Class: High Sensitivity DNA Assay
 Data Path: C:\...ents and Settings\Bioanalyzer\2013-09-19\2013-09-19_001.xad

Created: 9/19/2013 9:19:03 AM
 Modified: 9/19/2013 10:05:05 AM

Electropherogram Summary Continued ...



Setpoint Deviations for sample 1 : M206 1mm-1

Height Threshold [FU] : 20

Overall Results for sample 1 : M206 1mm-1

Number of peaks found: 4 Corr. Area 1: 240.1
 Noise: 0.2

Peak table for sample 1 : M206 1mm-1

Peak	Size [bp]	Conc. [pg/μl]	Molarity [pmol/l]	Observations
1	35	125.00	5,411.3	Lower Marker
2	47	258.95	8,365.7	
3	139	596.69	6,523.1	
4	367	282.89	1,166.8	
5	407	184.81	687.2	
6	10,380	75.00	10.9	Upper Marker

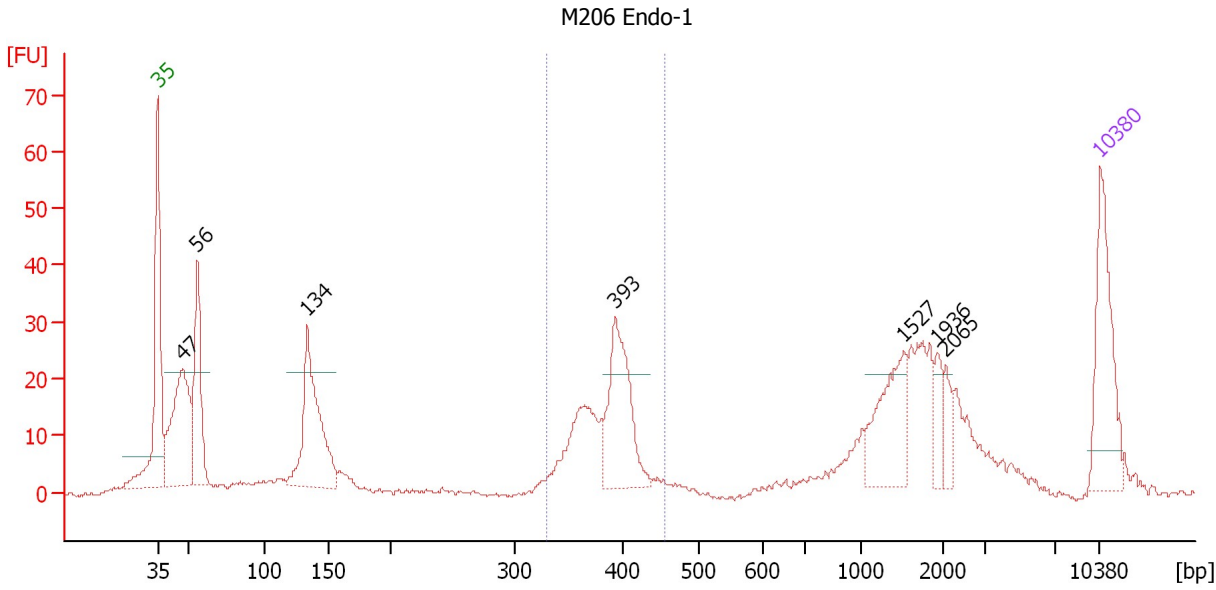
Region table for sample 1 : M206 1mm-1

From [bp]	To [bp]	Average Size [bp]	Molarity [pmol/l]	Conc. [pg/μl]	Corr. Area	% of Total	Size distribution in CV [%]	Color
329	459	385	1,687.4	426.83	240.1	31	7.5	Blue

Assay Class: High Sensitivity DNA Assay
 Data Path: C:\...ents and Settings\Bioanalyzer\2013-09-19\2013-09-19_001.xad

Created: 9/19/2013 9:19:03 AM
 Modified: 9/19/2013 10:05:05 AM

Electropherogram Summary Continued ...



Setpoint Deviations for sample 2 : M206 Endo-1

Height Threshold [FU] : 20

Overall Results for sample 2 : M206 Endo-1

Number of peaks found: 7 Corr. Area 1: 143.7
 Noise: 0.4

Peak table for sample 2 : M206 Endo-1

Peak	Size [bp]	Conc. [pg/μl]	Molarity [pmol/l]	Observations
1	35	125.00	5,411.3	Lower Marker
2	47	174.94	5,649.1	
3	56	117.73	3,213.8	
4	134	160.09	1,811.6	
5	393	115.75	445.8	
6	1,527	69.98	69.5	
7	1,936	19.23	15.0	
8	2,065	15.43	11.3	
9	10,380	75.00	10.9	Upper Marker

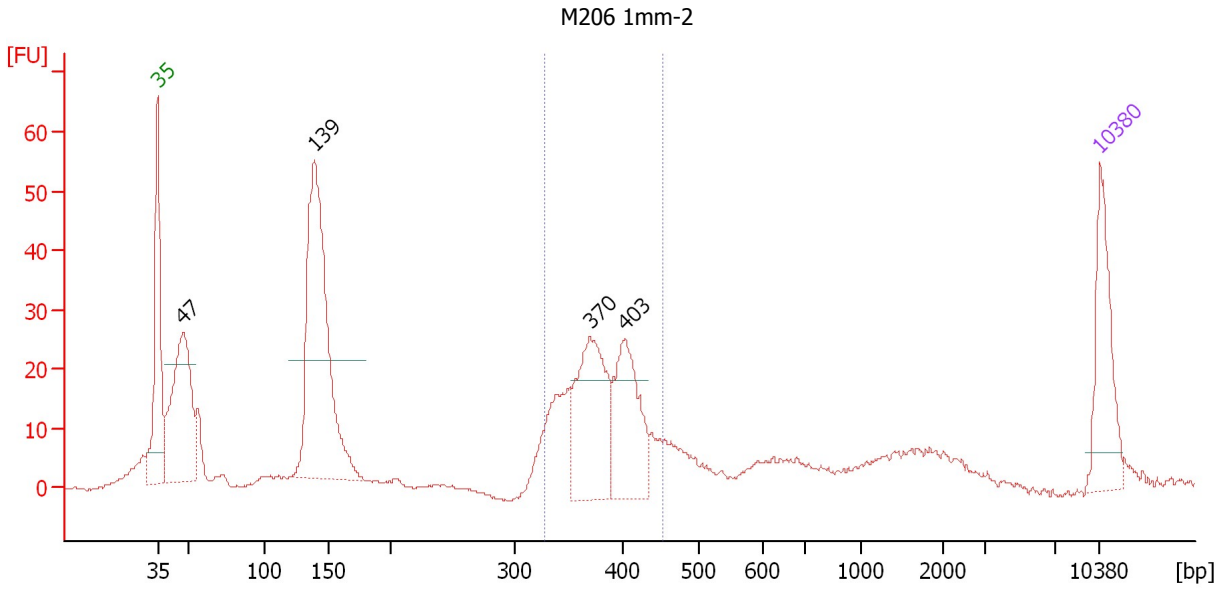
Region table for sample 2 : M206 Endo-1

From [bp]	To [bp]	Average Size [bp]	Molarity [pmol/l]	Conc. [pg/μl]	Corr. Area	% of Total	Size distribution in CV [%]	Color
330	457	385	905.1	229.35	143.7	22	6.4	Blue

Assay Class: High Sensitivity DNA Assay
 Data Path: C:\...ents and Settings\Bioanalyzer\2013-09-19\2013-09-19_001.xad

Created: 9/19/2013 9:19:03 AM
 Modified: 9/19/2013 10:05:05 AM

Electropherogram Summary Continued ...



Setpoint Deviations for sample 3 : M206 1mm-2

Height Threshold [FU] : 20

Overall Results for sample 3 : M206 1mm-2

Number of peaks found: 4 Corr. Area 1: 202.6
 Noise: 0.2

Peak table for sample 3 : M206 1mm-2

Peak	Size [bp]	Conc. [pg/μl]	Molarity [pmol/l]	Observations
1	35	125.00	5,411.3	Lower Marker
2	47	242.10	7,792.4	
3	139	421.26	4,575.7	
4	370	163.08	667.8	
5	403	127.27	478.6	
6	10,380	75.00	10.9	Upper Marker

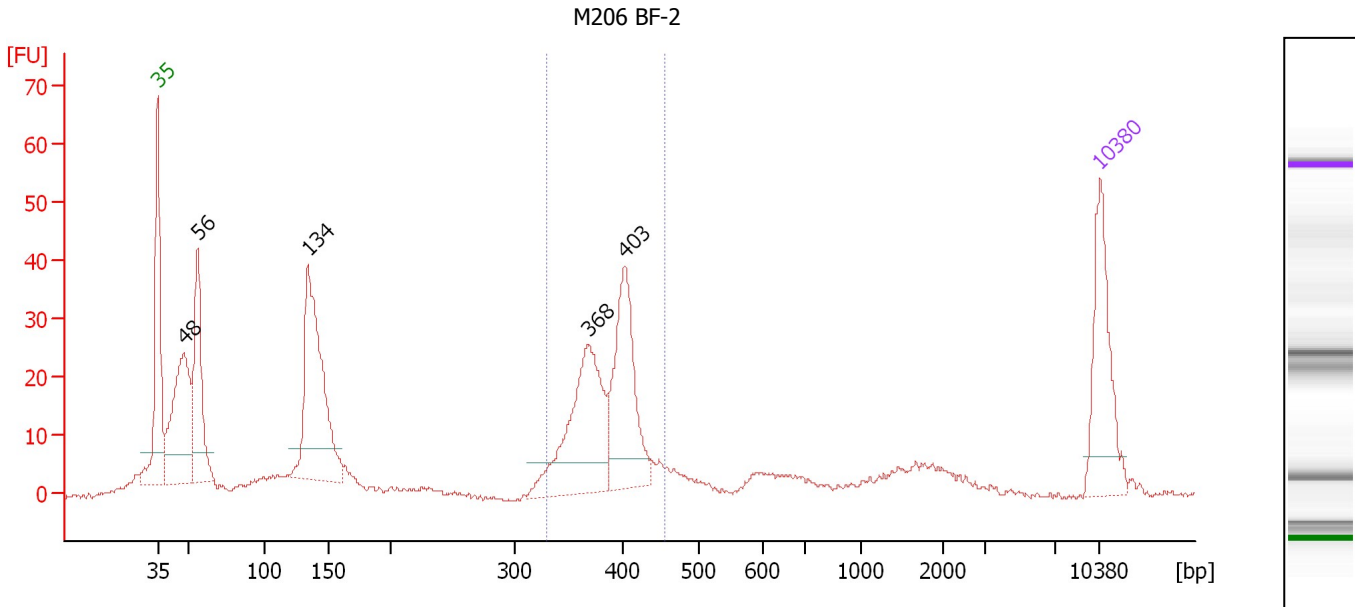
Region table for sample 3 : M206 1mm-2

From [bp]	To [bp]	Average Size [bp]	Molarity [pmol/l]	Conc. [pg/μl]	Corr. Area	% of Total	Size distribution in CV [%]	Color
327	452	381	1,356.0	339.13	202.6	31	7.9	Blue

Assay Class: High Sensitivity DNA Assay
 Data Path: C:\...ents and Settings\Bioanalyzer\2013-09-19\2013-09-19_001.xad

Created: 9/19/2013 9:19:03 AM
 Modified: 9/19/2013 10:05:05 AM

Electropherogram Summary Continued ...



Overall Results for sample 4 : M206 BF-2

Number of peaks found: 5 Corr. Area 1: 199.7
 Noise: 0.4

Peak table for sample 4 : M206 BF-2

Peak	Size [bp]	Conc. [pg/μl]	Molarity [pmol/l]	Observations
1	35	125.00	5,411.3	Lower Marker
2	48	184.86	5,895.7	
3	56	136.36	3,702.4	
4	134	237.30	2,679.0	
5	368	166.90	686.9	
6	403	135.85	510.4	
7	10,380	75.00	10.9	Upper Marker

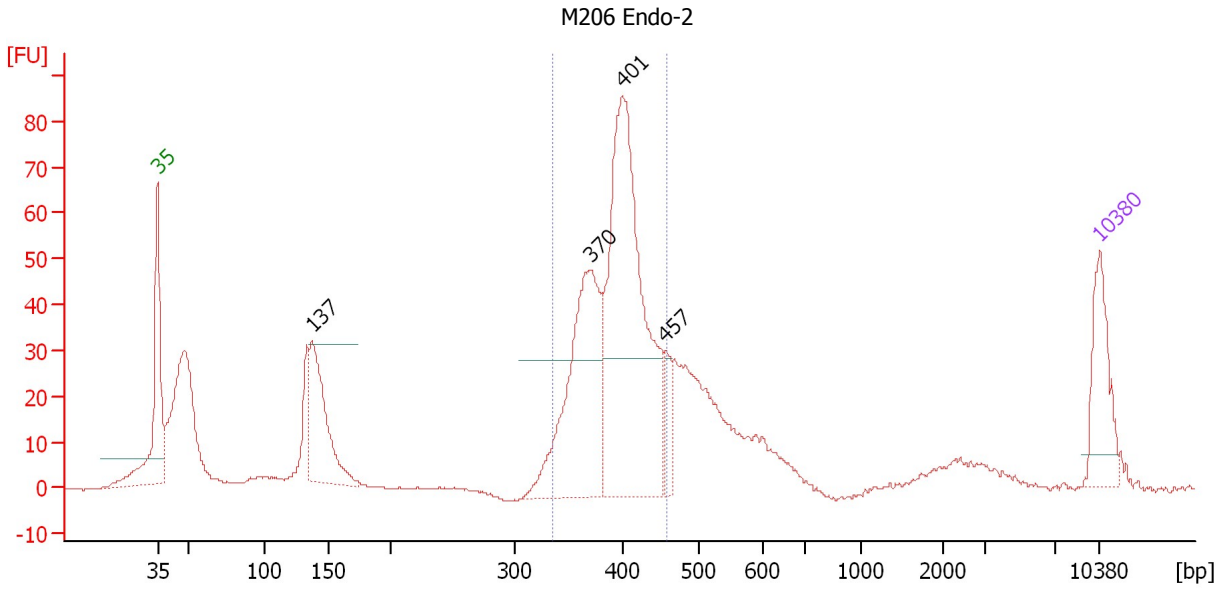
Region table for sample 4 : M206 BF-2

From [bp]	To [bp]	Average Size [bp]	Molarity [pmol/l]	Conc. [pg/μl]	Corr. Area	% of Total	Size distribution in CV [%]	Color
330	454	387	1,248.2	317.15	199.7	32	6.8	Blue

Assay Class: High Sensitivity DNA Assay
 Data Path: C:\...ents and Settings\Bioanalyzer\2013-09-19\2013-09-19_001.xad

Created: 9/19/2013 9:19:03 AM
 Modified: 9/19/2013 10:05:05 AM

Electropherogram Summary Continued ...



Setpoint Deviations for sample 5 : M206 Endo-2

Height Threshold [FU] : 30

Overall Results for sample 5 : M206 Endo-2

Number of peaks found: 4 Corr. Area 1: 506.1
 Noise: 0.3

Peak table for sample 5 : M206 Endo-2

Peak	Size [bp]	Conc. [pg/μl]	Molarity [pmol/l]	Observations
1	35	125.00	5,411.3	Lower Marker
2	137	191.01	2,110.0	
3	370	331.42	1,356.6	
4	401	553.12	2,088.6	
5	457	42.24	140.1	
6	10,380	75.00	10.9	Upper Marker

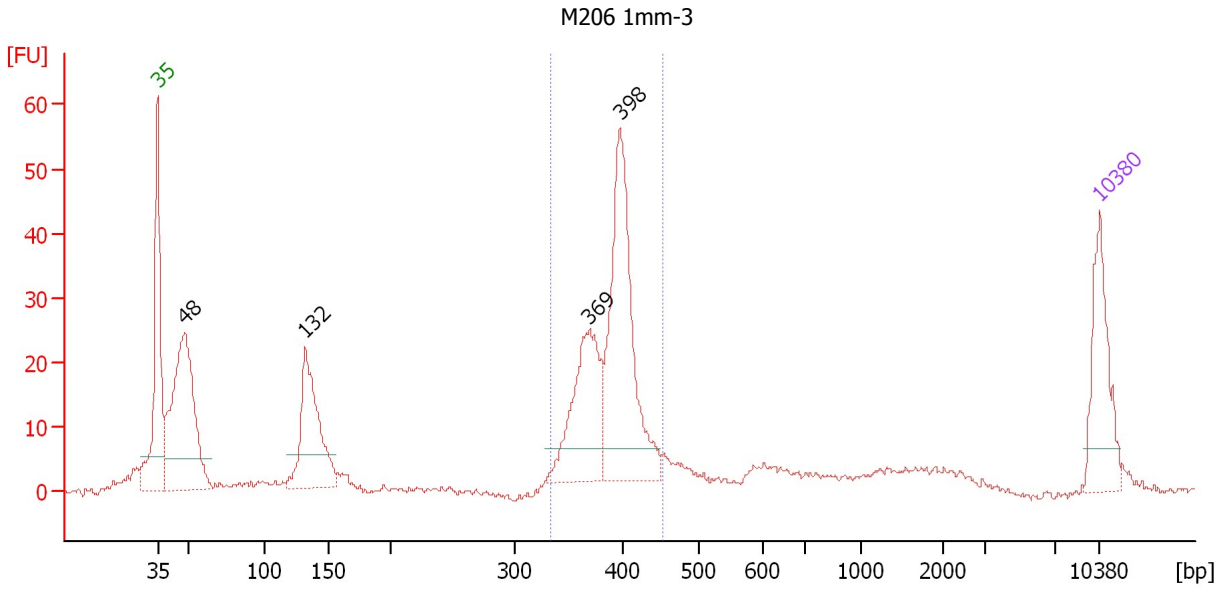
Region table for sample 5 : M206 Endo-2

From [bp]	To [bp]	Average Size [bp]	Molarity [pmol/l]	Conc. [pg/μl]	Corr. Area	% of Total	Size distribution in CV [%]	Color
336	459	396	3,222.9	837.41	506.1	49	7.3	Blue

Assay Class: High Sensitivity DNA Assay
 Data Path: C:\...ents and Settings\Bioanalyzer\2013-09-19\2013-09-19_001.xad

Created: 9/19/2013 9:19:03 AM
 Modified: 9/19/2013 10:05:05 AM

Electropherogram Summary Continued ...



Overall Results for sample 6 : M206 1mm-3

Number of peaks found: 4 Corr. Area 1: 225.7
 Noise: 0.4

Peak table for sample 6 : M206 1mm-3

Peak	Size [bp]	Conc. [pg/μl]	Molarity [pmol/l]	Observations
1	35	125.00	5,411.3	Lower Marker
2	48	318.18	10,027.5	
3	132	176.66	2,024.6	
4	369	154.64	635.0	
5	398	267.37	1,018.4	
6	10,380	75.00	10.9	Upper Marker

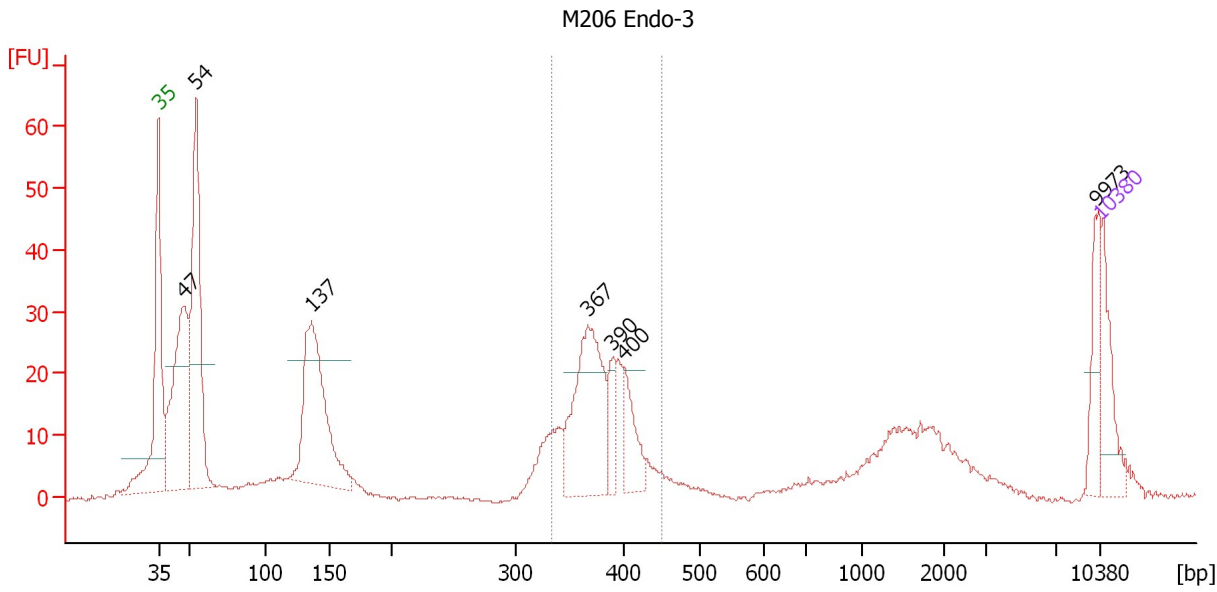
Region table for sample 6 : M206 1mm-3

From [bp]	To [bp]	Average Size [bp]	Molarity [pmol/l]	Conc. [pg/μl]	Corr. Area	% of Total	Size distribution in CV [%]	Color
334	452	390	1,772.9	454.50	225.7	46	6.1	Blue

Assay Class: High Sensitivity DNA Assay
 Data Path: C:\...ents and Settings\Bioanalyzer\2013-09-19\2013-09-19_001.xad

Created: 9/19/2013 9:19:03 AM
 Modified: 9/19/2013 10:05:05 AM

Electropherogram Summary Continued ...



Setpoint Deviations for sample 7 : M206 Endo-3

Height Threshold [FU] : 20

Overall Results for sample 7 : M206 Endo-3

Number of peaks found: 7 Corr. Area 1: 179.7
 Noise: 0.3

Peak table for sample 7 : M206 Endo-3

Peak	Size [bp]	Conc. [pg/μl]	Molarity [pmol/l]	Observations
1	35	125.00	5,411.3	Lower Marker
2	47	411.94	13,251.6	
3	54	441.52	12,393.9	
4	137	396.41	4,395.9	
5	367	283.30	1,169.4	
6	390	49.35	191.7	
7	400	81.82	309.7	
8	9,973	62.89	9.6	
9	10,380	75.00	10.9	Upper Marker

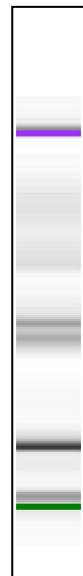
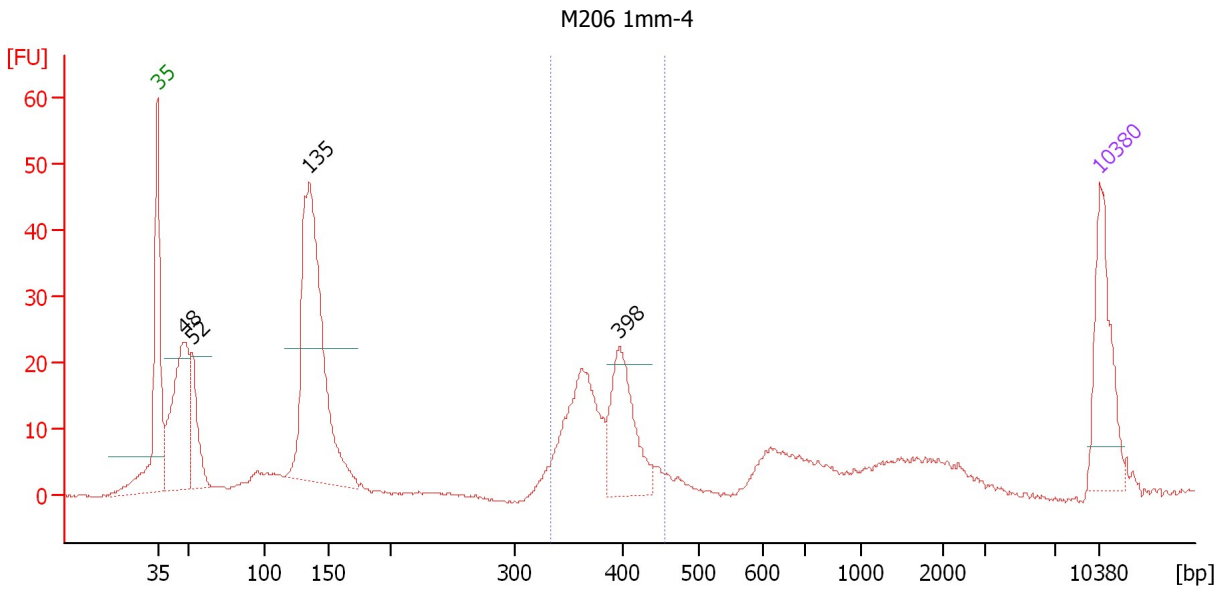
Region table for sample 7 : M206 Endo-3

From [bp]	To [bp]	Average Size [bp]	Molarity [pmol/l]	Conc. [pg/μl]	Corr. Area	% of Total	Size distribution in CV [%]	Color
334	450	380	2,167.1	541.72	179.7	25	6.6	Blue

Assay Class: High Sensitivity DNA Assay
 Data Path: C:\...ents and Settings\Bioanalyzer\2013-09-19\2013-09-19_001.xad

Created: 9/19/2013 9:19:03 AM
 Modified: 9/19/2013 10:05:05 AM

Electropherogram Summary Continued ...



Setpoint Deviations for sample 8 : M206 1mm-4

Height Threshold [FU] : 20

Overall Results for sample 8 : M206 1mm-4

Number of peaks found: 4 Corr. Area 1: 140.7
 Noise: 0.2

Peak table for sample 8 : M206 1mm-4

Peak	Size [bp]	Conc. [pg/μl]	Molarity [pmol/l]	Observations
1	35	125.00	5,411.3	Lower Marker
2	48	203.43	6,448.2	
3	52	80.45	2,353.5	
4	135	400.53	4,482.0	
5	398	111.62	425.4	
6	10,380	75.00	10.9	Upper Marker

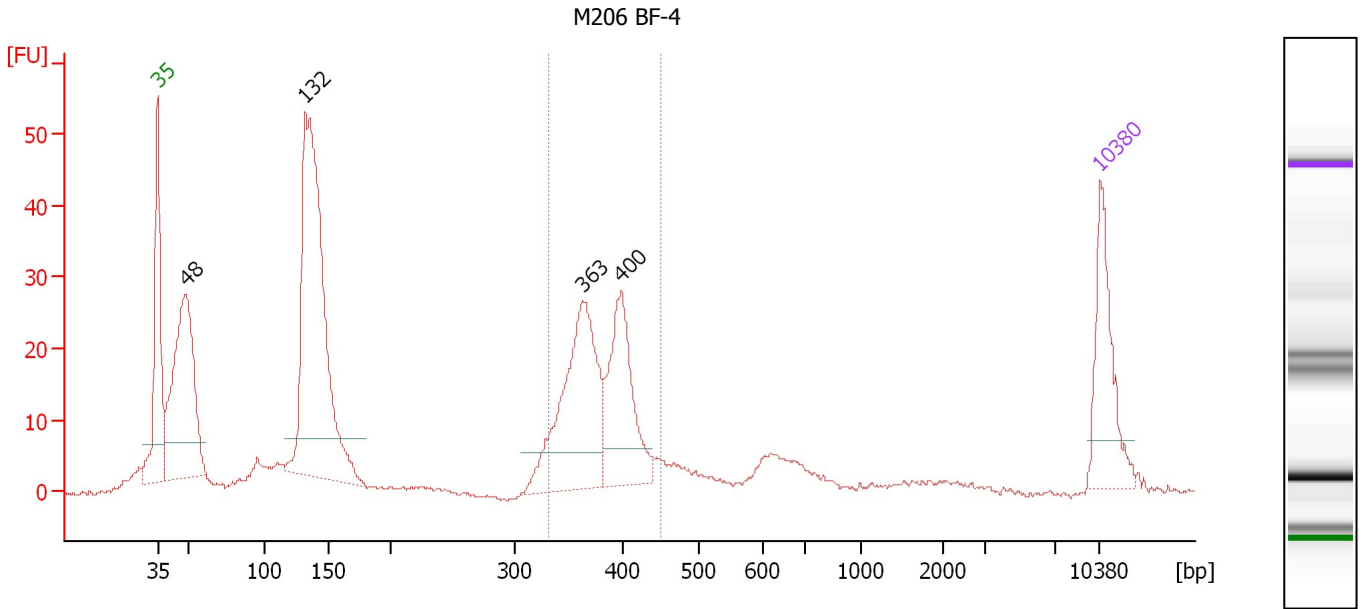
Region table for sample 8 : M206 1mm-4

From [bp]	To [bp]	Average Size [bp]	Molarity [pmol/l]	Conc. [pg/μl]	Corr. Area	% of Total	Size distribution in CV [%]	Color
334	457	383	1,045.5	263.29	140.7	24	7.2	Blue

Assay Class: High Sensitivity DNA Assay
 Data Path: C:\...ents and Settings\Bioanalyzer\2013-09-19\2013-09-19_001.xad

Created: 9/19/2013 9:19:03 AM
 Modified: 9/19/2013 10:05:05 AM

Electropherogram Summary Continued ...



Overall Results for sample 9 : M206 BF-4

Number of peaks found: 4 Corr. Area 1: 180.0
 Noise: 0.3

Peak table for sample 9 : M206 BF-4

Peak	Size [bp]	Conc. [pg/μl]	Molarity [pmol/l]	Observations
1	35	125.00	5,411.3	Lower Marker
2	48	311.88	9,768.9	
3	132	520.13	5,972.0	
4	363	226.21	944.9	
5	400	141.27	535.6	
6	10,380	75.00	10.9	Upper Marker

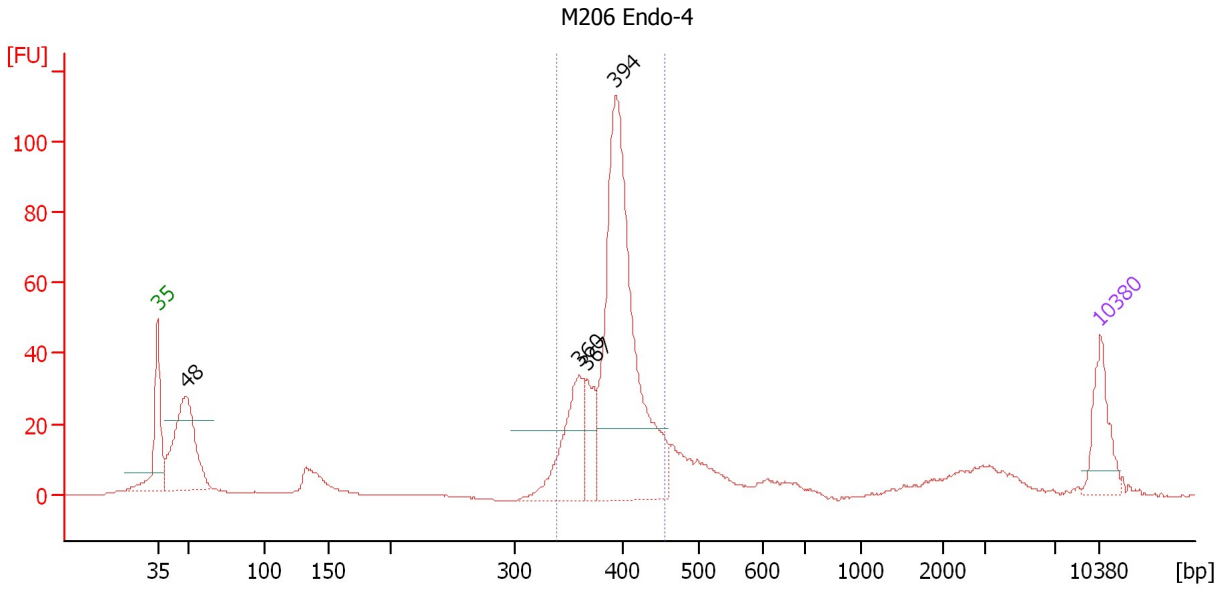
Region table for sample 9 : M206 BF-4

From [bp]	To [bp]	Average Size [bp]	Molarity [pmol/l]	Conc. [pg/μl]	Corr. Area	% of Total	Size distribution in CV [%]	Color
332	450	380	1,467.4	366.60	180.0	29	6.9	Blue

Assay Class: High Sensitivity DNA Assay
 Data Path: C:\...ents and Settings\Bioanalyzer\2013-09-19\2013-09-19_001.xad

Created: 9/19/2013 9:19:03 AM
 Modified: 9/19/2013 10:05:05 AM

Electropherogram Summary Continued ...



Setpoint Deviations for sample 10 : M206 Endo-4

Height Threshold [FU] : 20

Overall Results for sample 10 : M206 Endo-4

Number of peaks found: 4 Corr. Area 1: 456.3
 Noise: 0.2

Peak table for sample 10 : M206 Endo-4

Peak	Size [bp]	Conc. [pg/μl]	Molarity [pmol/l]	Observations
1	35	125.00	5,411.3	Lower Marker
2	48	327.32	10,248.9	
3	360	182.42	768.1	
4	367	78.98	326.4	
5	394	725.38	2,790.1	
6	10,380	75.00	10.9	Upper Marker

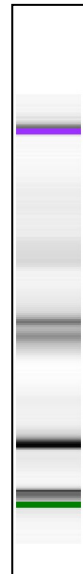
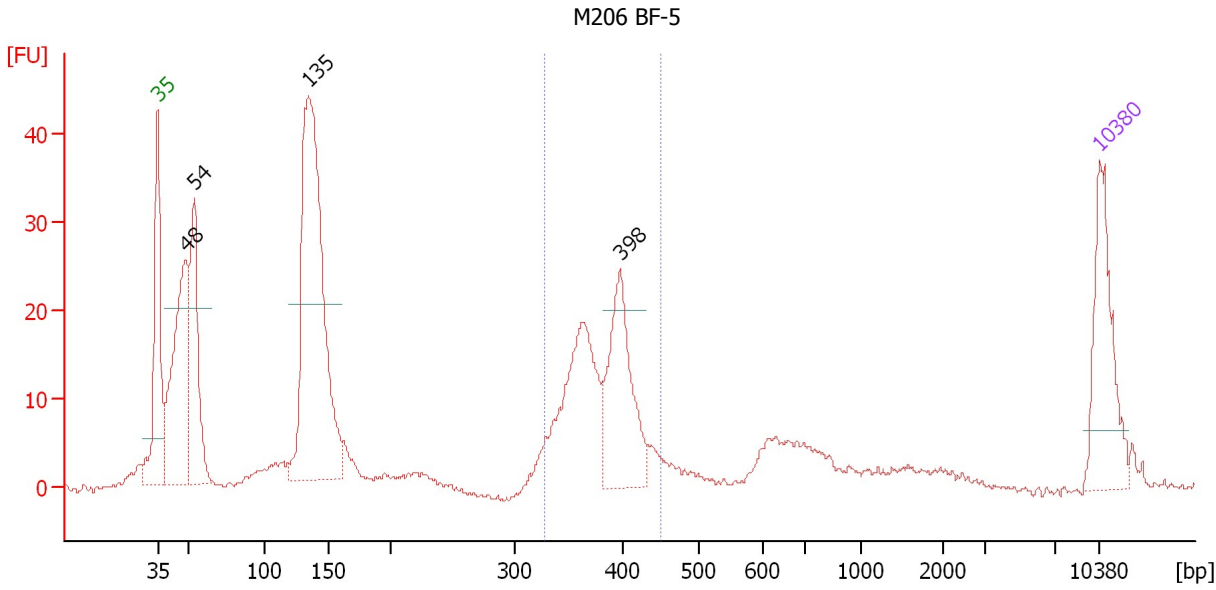
Region table for sample 10 : M206 Endo-4

From [bp]	To [bp]	Average Size [bp]	Molarity [pmol/l]	Conc. [pg/μl]	Corr. Area	% of Total	Size distribution in CV [%]	Color
339	456	393	3,522.0	910.75	456.3	58	6.3	Blue

Assay Class: High Sensitivity DNA Assay
 Data Path: C:\...ents and Settings\Bioanalyzer\2013-09-19\2013-09-19_001.xad

Created: 9/19/2013 9:19:03 AM
 Modified: 9/19/2013 10:05:05 AM

Electropherogram Summary Continued ...



Setpoint Deviations for sample 11 : M206 BF-5

Height Threshold [FU] : 20

Overall Results for sample 11 : M206 BF-5

Number of peaks found: 4 Corr. Area 1: 143.9
 Noise: 0.3

Peak table for sample 11 : M206 BF-5

Peak	Size [bp]	Conc. [pg/μl]	Molarity [pmol/l]	Observations
1	35	125.00	5,411.3	Lower Marker
2	48	223.21	6,982.8	
3	54	153.05	4,334.1	
4	135	432.17	4,853.9	
5	398	128.82	490.2	
6	10,380	75.00	10.9	Upper Marker

Region table for sample 11 : M206 BF-5

From [bp]	To [bp]	Average Size [bp]	Molarity [pmol/l]	Conc. [pg/μl]	Corr. Area	% of Total	Size distribution in CV [%]	Color
328	449	381	1,197.4	299.59	143.9	25	7.2	Blue

Assay Class: High Sensitivity DNA Assay
Data Path: C:\...ents and Settings\Bioanalyzer\2013-09-19\2013-09-19_001.xad

Created: 9/19/2013 9:19:03 AM
Modified: 9/19/2013 10:05:05 AM

Gel Image

