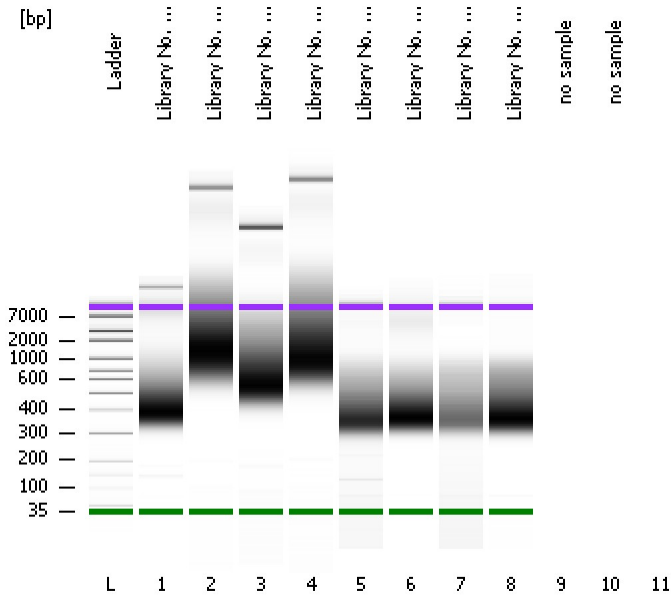


Assay Class: High Sensitivity DNA Assay
Data Path: C:\...ents and Settings\Bioanalyzer\2013-09-20\2013-09-20_003.xad

Created: 9/20/2013 11:00:41 AM
Modified: 9/20/2013 11:41:36 AM

Electrophoresis File Run Summary



Instrument Information:

Instrument Name: DE13701086 Firmware: C.01.069
Serial#: DE13701086 Type: G2938B

Assay Information:

Assay Origin Path: C:\Program Files\Agilent\2100 bioanalyzer\2100 expert\assays\dsDNA\High Sensitivity DNA.xsy
Assay Class: High Sensitivity DNA Assay
Version: 1.03
Assay Comments: Copyright © 2003-2010 Agilent Technologies

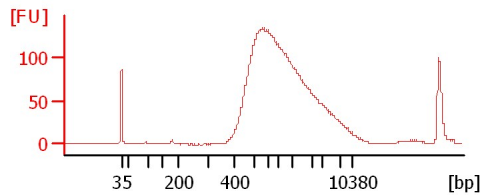
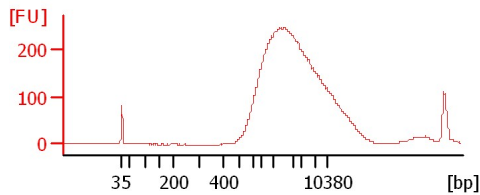
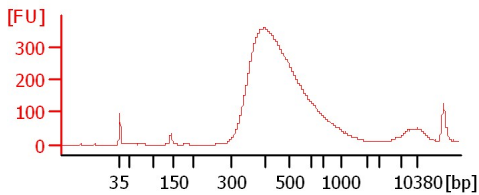
Chip Information:

Chip Lot #:
Reagent Kit Lot #:
Chip Comments:

Library No. 73 repeat run

Library No. 74 repeat run

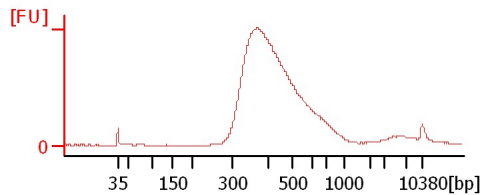
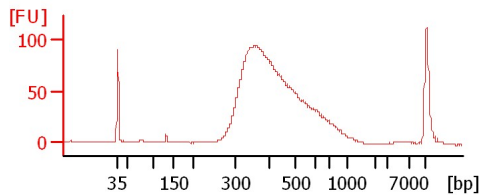
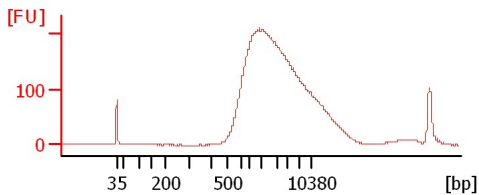
Library No. 75 repeat run



Library No. 76 repeat run

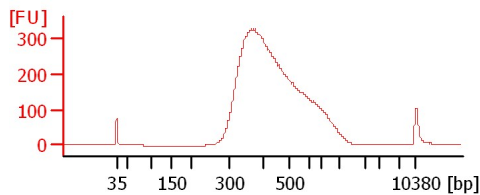
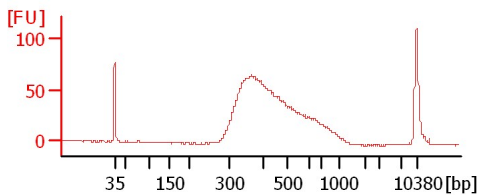
Library No. 77 repeat run

Library No. 78 repeat run



Library No. 79 repeat run

Library No. 80 repeat run



Assay Class: High Sensitivity DNA Assay
Data Path: C:\...ents and Settings\Bioanalyzer\2013-09-20\2013-09-20_003.xad

Created: 9/20/2013 11:00:41 AM
Modified: 9/20/2013 11:41:36 AM

Electrophoresis File Run Summary (Chip Summary)

Sample Name	Sample Comment	Rest. Digest	Status	Observation	Result Label	Result Color
Library No. 73 repeat run		<input type="checkbox"/>	✓			
Library No. 74 repeat run		<input type="checkbox"/>	✓			
Library No. 75 repeat run		<input type="checkbox"/>	✓			
Library No. 76 repeat run		<input type="checkbox"/>	✓			
Library No. 77 repeat run		<input type="checkbox"/>	✓			
Library No. 78 repeat run		<input type="checkbox"/>	✓			
Library No. 79 repeat run		<input type="checkbox"/>	✓			
Library No. 80 repeat run		<input type="checkbox"/>	✓			
no sample		<input type="checkbox"/>				
no sample		<input type="checkbox"/>				
Ladder		<input type="checkbox"/>	✓			

Chip Lot # **Reagent Kit Lot #**

Chip Comments :

Assay Class: High Sensitivity DNA Assay
Data Path: C:\...ents and Settings\Bioanalyzer\2013-09-20\2013-09-20_003.xad

Created: 9/20/2013 11:00:41 AM
Modified: 9/20/2013 11:41:36 AM

Electrophoresis Assay Details

General Analysis Settings

Number of Available Sample and Ladder Wells (Max.) : 12
Minimum Visible Range [s] : 32
Maximum Visible Range [s] : 138
Start Analysis Time Range [s] : 33
End Analysis Time Range [s] : 137.5
Ladder Concentration [pg/μl] : 1950
Uses Standard Area for Ladder Fragments
Lower Marker Concentration [pg/μl] : 125
Upper Marker Concentration [pg/μl] : 75
Used Upper Marker for Quantitation
Standard Curve Fit is Point to Point
Show Data Aligned to Lower and Upper Marker

Integrator Settings

Integration Start Time [s] : 33.05
Integration End Time [s] : 137
Slope Threshold : 0.8
Height Threshold [FU] : 5
Area Threshold : 0.1
Width Threshold [s] : 0.6
Baseline Plateau [s] : 0.5

Filter Settings

Filter Width [s] : 0.5
Polynomial Order : 4

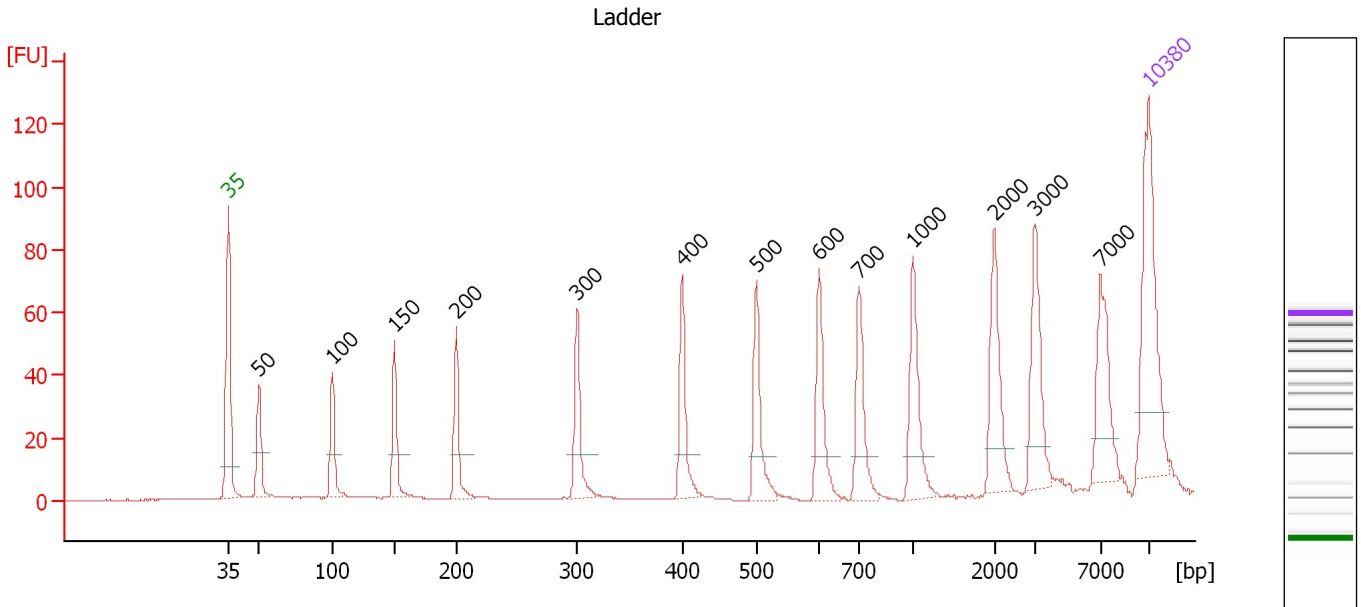
Ladder

Ladder Peak	Size	Area
1	35	160
2	50	210
3	100	208
4	150	221
5	200	242
6	300	270
7	400	305
8	500	306
9	600	336
10	700	321
11	1000	366
12	2000	413
13	3000	411
14	7000	400
15	10380	214

Assay Class: High Sensitivity DNA Assay
 Data Path: C:\...ents and Settings\Bioanalyzer\2013-09-20\2013-09-20_003.xad

Created: 9/20/2013 11:00:41 AM
 Modified: 9/20/2013 11:41:36 AM

Electropherogram Summary



Overall Results for Ladder

Noise: 0.2

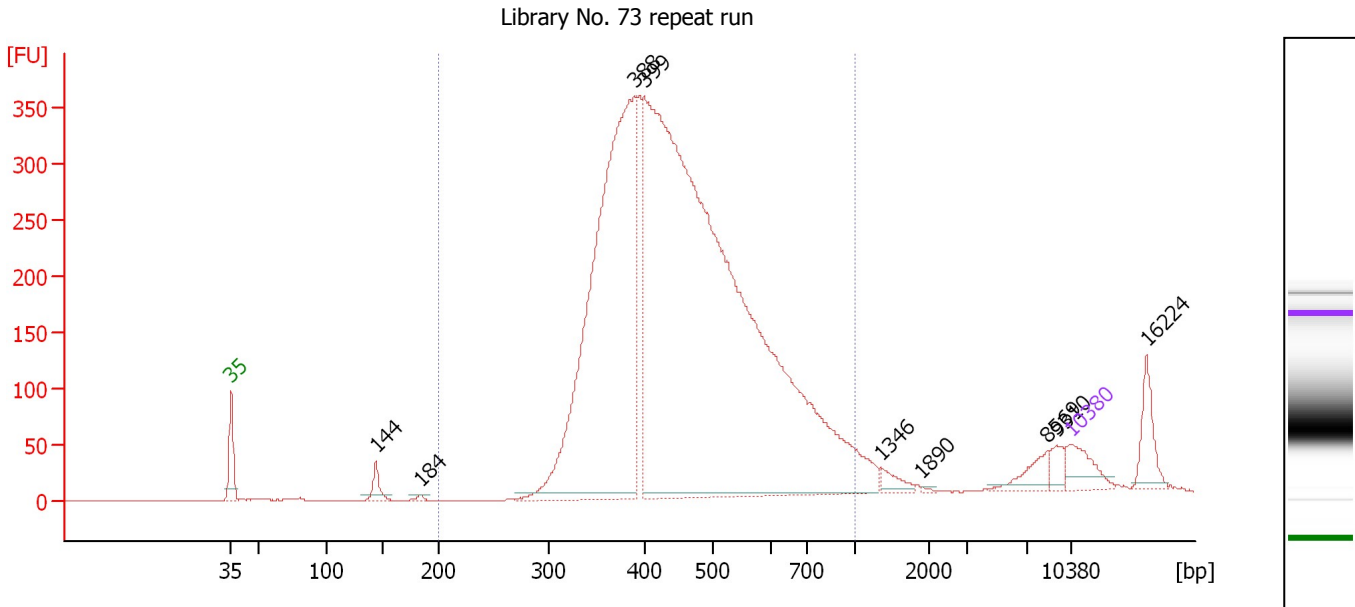
Peak table for Ladder

Peak	Size [bp]	Conc. [pg/μl]	Molarity [pmol/l]	Observations
1	35	125.00	5,411.3	Lower Marker
2	50	150.00	4,545.5	Ladder Peak
3	100	150.00	2,272.7	Ladder Peak
4	150	150.00	1,515.2	Ladder Peak
5	200	150.00	1,136.4	Ladder Peak
6	300	150.00	757.6	Ladder Peak
7	400	150.00	568.2	Ladder Peak
8	500	150.00	454.5	Ladder Peak
9	600	150.00	378.8	Ladder Peak
10	700	150.00	324.7	Ladder Peak
11	1,000	150.00	227.3	Ladder Peak
12	2,000	150.00	113.6	Ladder Peak
13	3,000	150.00	75.8	Ladder Peak
14	7,000	150.00	32.5	Ladder Peak
15	10,380	75.00	10.9	Upper Marker

Assay Class: High Sensitivity DNA Assay
 Data Path: C:\...ents and Settings\Bioanalyzer\2013-09-20\2013-09-20_003.xad

Created: 9/20/2013 11:00:41 AM
 Modified: 9/20/2013 11:41:36 AM

Electropherogram Summary Continued ...



Overall Results for sample 1 : Library No. 73 repeat run

Number of peaks found: 9 Corr. Area 1: 6,061.7
 Noise: 0.2

Peak table for sample 1 : Library No. 73 repeat run

Peak	Size [bp]	Conc. [pg/μl]	Molarity [pmol/l]	Observations
1	35	125.00	5,411.3	Lower Marker
2	144	60.19	633.5	
3	184	8.73	71.9	
4	388	2,210.89	8,632.8	
5	399	4,740.46	18,019.1	
6	1,346	36.09	40.6	
7	1,890	3.43	2.7	
8	8,569	57.49	10.2	
9	9,310	35.73	5.8	
10	10,380	75.00	10.9	Upper Marker
11	16,224	0.00	0.0	

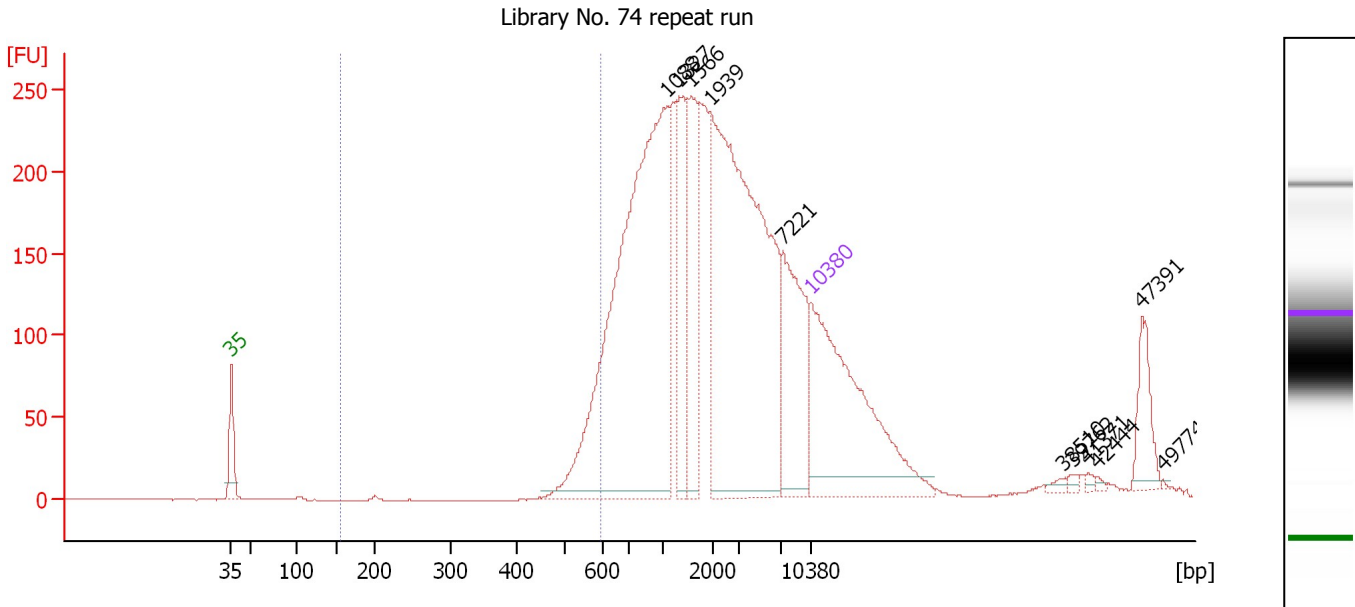
Region table for sample 1 : Library No. 73 repeat run

From [bp]	To [bp]	Average Size [bp]	Molarity [pmol/l]	Conc. [pg/μl]	Corr. Area	% of Total	Size distribution in CV [%]	Color
200	1,000	468	23,372.6	6,723.89	6,061.7	94	25.9	Blue

Assay Class: High Sensitivity DNA Assay
 Data Path: C:\...ents and Settings\Bioanalyzer\2013-09-20\2013-09-20_003.xad

Created: 9/20/2013 11:00:41 AM
 Modified: 9/20/2013 11:41:36 AM

Electropherogram Summary Continued ...



Overall Results for sample 2 : Library No. 74 repeat run

Number of peaks found: 11 Corr. Area 1: 156.1
 Noise: 0.3

Peak table for sample 2 : Library No. 74 repeat run

Peak	Size [bp]	Conc. [pg/μl]	Molarity [pmol/l]	Observations
1	35	125.00	5,411.3	Lower Marker
2	1,088	206.15	287.0	
3	1,327	34.43	39.3	
4	1,566	38.15	36.9	
5	1,939	169.32	132.3	
6	7,221	44.29	9.3	
7	10,380	75.00	10.9	Upper Marker
8	38,510	0.00	0.0	
9	39,762	0.00	0.0	
10	41,371	0.00	0.0	
11	42,444	0.00	0.0	
12	47,391	0.00	0.0	
13	49,774	0.00	0.0	

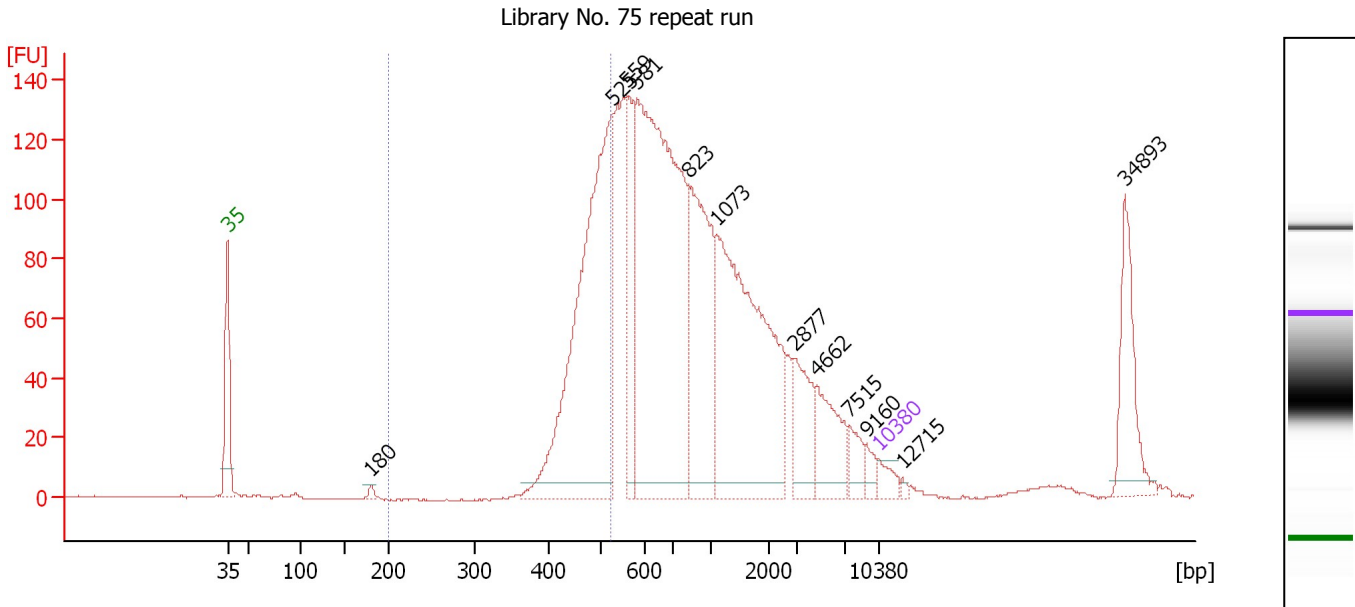
Region table for sample 2 : Library No. 74 repeat run

From [bp]	To [bp]	Average Size [bp]	Molarity [pmol/l]	Conc. [pg/μl]	Corr. Area	% of Total	Size distribution in CV [%]	Color
157	591	556	66.9	24.47	156.1	4	5.1	Blue

Assay Class: High Sensitivity DNA Assay
 Data Path: C:\...ents and Settings\Bioanalyzer\2013-09-20\2013-09-20_003.xad

Created: 9/20/2013 11:00:41 AM
 Modified: 9/20/2013 11:41:36 AM

Electropherogram Summary Continued ...



Overall Results for sample 3 : Library No. 75 repeat run

Number of peaks found: 12 Corr. Area 1: 525.4
 Noise: 0.2

Peak table for sample 3 : Library No. 75 repeat run

Peak	Size [bp]	Conc. [pg/μl]	Molarity [pmol/l]	Observations
1	35	125.00	5,411.3	Lower Marker
2	180	35.17	296.4	
3	525	2,959.05	8,532.6	
4	559	565.59	1,533.1	
5	581	3,526.89	9,205.2	
6	823	1,284.34	2,364.0	
7	1,073	2,156.75	3,046.7	
8	2,877	366.24	192.9	
9	4,662	365.42	118.8	
10	7,515	125.79	25.4	
11	9,160	73.47	12.2	
12	10,380	75.00	10.9	Upper Marker
13	12,715	0.00	0.0	
14	34,893	0.00	0.0	

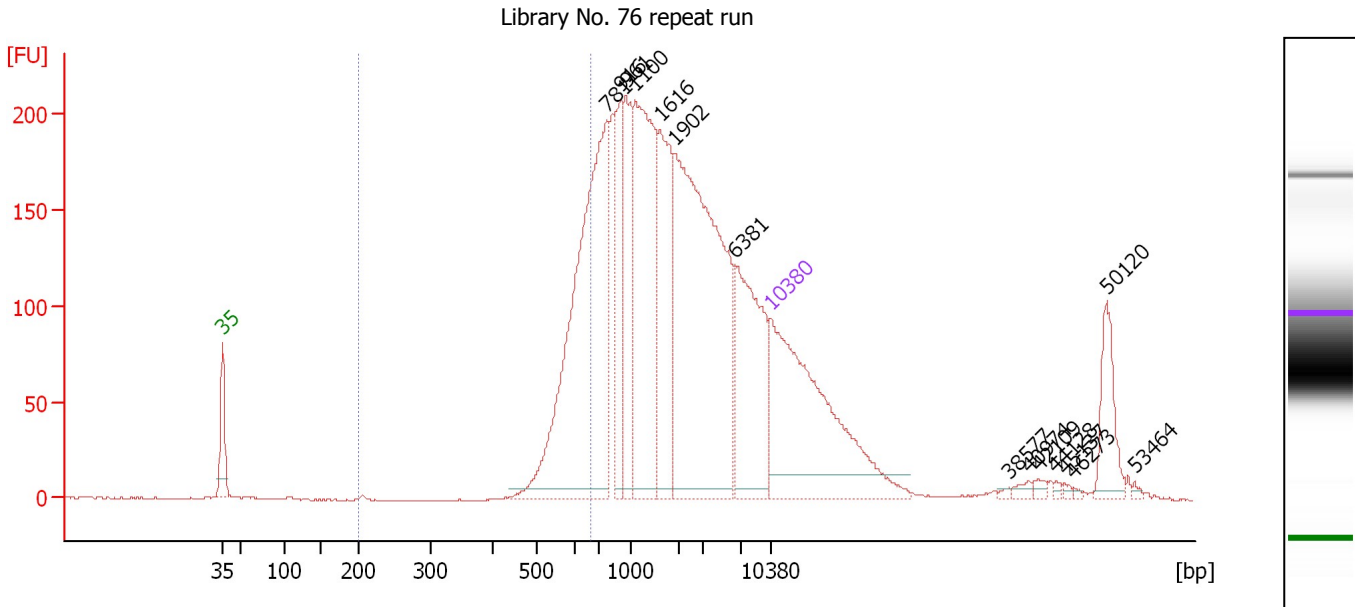
Region table for sample 3 : Library No. 75 repeat run

From [bp]	To [bp]	Average Size [bp]	Molarity [pmol/l]	Conc. [pg/μl]	Corr. Area	% of Total	Size distribution in CV [%]	Color
200	522	473	9,127.1	2,838.43	525.4	19	7.1	Blue

Assay Class: High Sensitivity DNA Assay
 Data Path: C:\...ents and Settings\Bioanalyzer\2013-09-20\2013-09-20_003.xad

Created: 9/20/2013 11:00:41 AM
 Modified: 9/20/2013 11:41:36 AM

Electropherogram Summary Continued ...



Overall Results for sample 4 : Library No. 76 repeat run

Number of peaks found: 15 Corr. Area 1: 527.9
 Noise: 0.2

Peak table for sample 4 : Library No. 76 repeat run

Peak	Size [bp]	Conc. [pg/μl]	Molarity [pmol/l]	Observations
1	35	125.00	5,411.3	Lower Marker
2	781	142.80	277.0	
3	916	31.88	52.7	
4	961	33.26	52.4	
5	1,100	79.24	109.1	
6	1,616	42.58	39.9	
7	1,902	130.75	104.2	
8	6,381	47.68	11.3	
9	10,380	75.00	10.9	Upper Marker
10	38,577	0.00	0.0	
11	40,974	0.00	0.0	
12	42,109	0.00	0.0	
13	44,128	0.00	0.0	
14	45,137	0.00	0.0	
15	46,273	0.00	0.0	
16	50,120	0.00	0.0	
17	53,464	0.00	0.0	

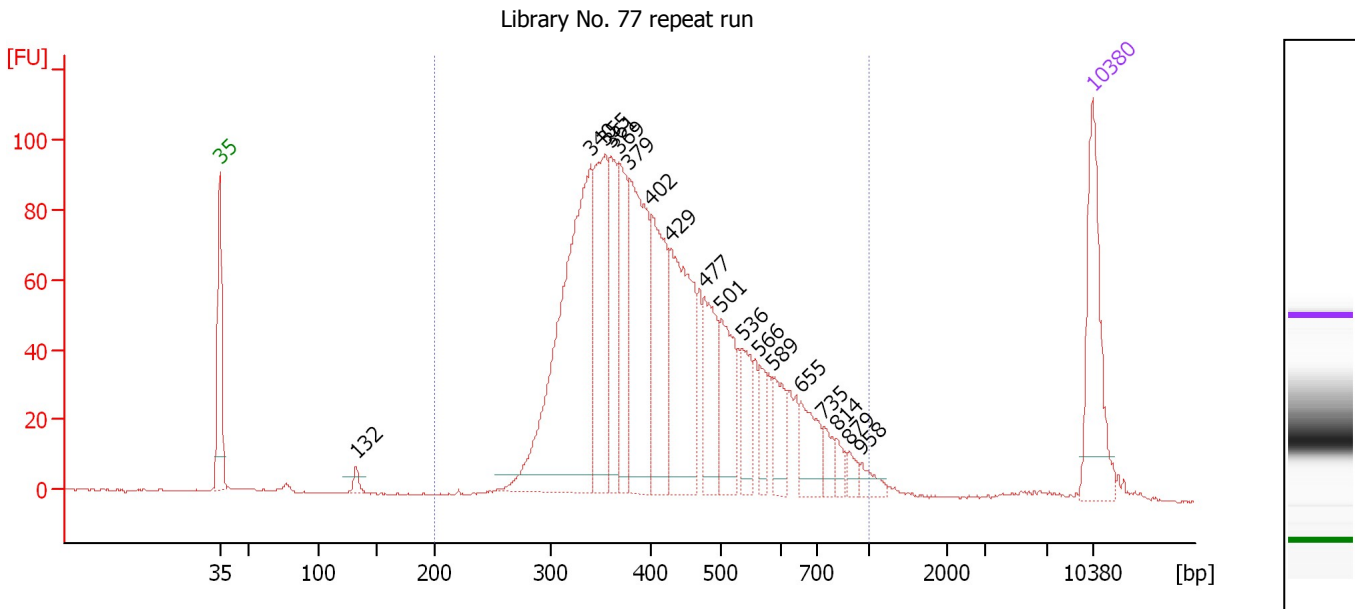
Region table for sample 4 : Library No. 76 repeat run

From [bp]	To [bp]	Average Size [bp]	Molarity [pmol/l]	Conc. [pg/μl]	Corr. Area	% of Total	Size distribution in CV [%]	Color
200	673	600	224.3	87.84	527.9	14	8.3	Blue

Assay Class: High Sensitivity DNA Assay
 Data Path: C:\...ents and Settings\Bioanalyzer\2013-09-20\2013-09-20_003.xad

Created: 9/20/2013 11:00:41 AM
 Modified: 9/20/2013 11:41:36 AM

Electropherogram Summary Continued ...



Overall Results for sample 5 : Library No. 77 repeat run

Number of peaks found: 18 Corr. Area 1: 1,882.2
 Noise: 0.3

Peak table for sample 5 : Library No. 77 repeat run

Peak	Size [bp]	Conc. [pg/μl]	Molarity [pmol/l]	Observations
1	35	125.00	5,411.3	Lower Marker
2	132	9.19	105.3	
3	340	363.56	1,618.6	
4	355	140.33	598.5	
5	361	89.42	375.7	
6	369	89.86	369.3	
7	379	168.82	674.3	
8	402	121.28	457.3	
9	429	162.09	572.3	
10	477	74.48	236.6	
11	501	67.76	204.8	
12	536	35.38	100.0	
13	566	23.05	61.7	
14	589	32.17	82.8	
15	655	38.18	88.3	
16	735	14.97	30.8	
17	814	10.02	18.7	
18	879	9.42	16.2	
19	958	11.16	17.7	
20	10,380	75.00	10.9	Upper Marker

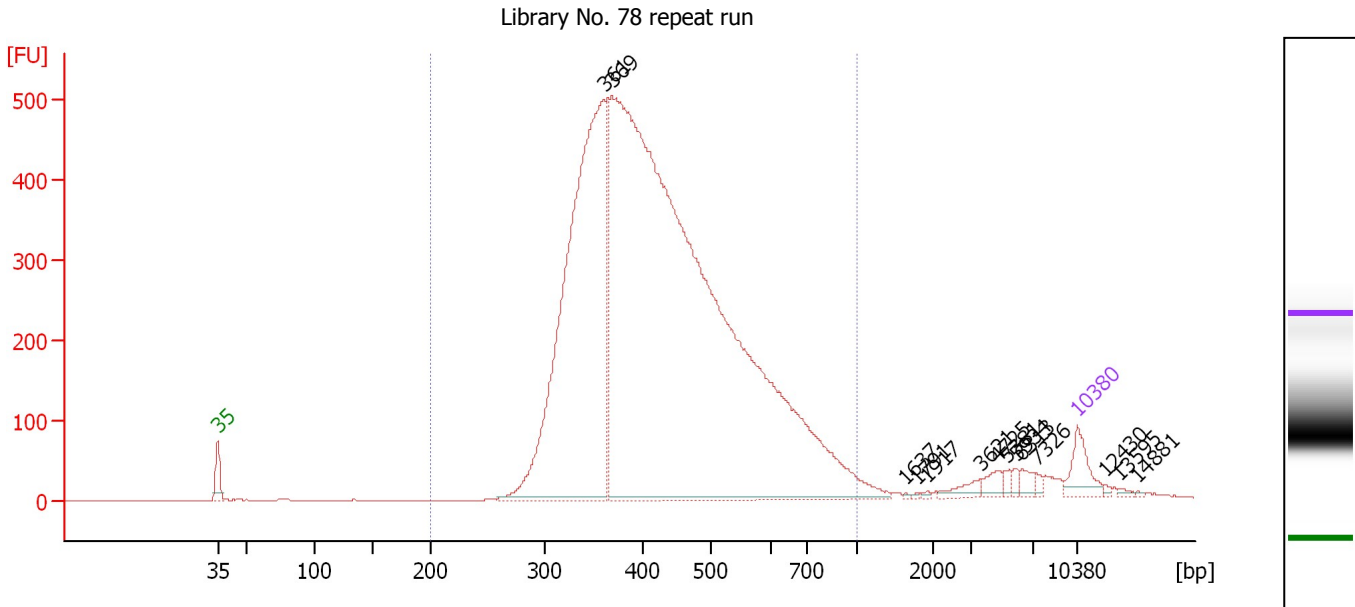
Region table for sample 5 : Library No. 77 repeat run

From [bp]	To [bp]	Average Size [bp]	Molarity [pmol/l]	Conc. [pg/μl]	Corr. Area	% of Total	Size distribution in CV [%]	Color
200	1,000	439	6,004.0	1,592.12	1,882.2	97	28.6	Blue

Assay Class: High Sensitivity DNA Assay
 Data Path: C:\...ents and Settings\Bioanalyzer\2013-09-20\2013-09-20_003.xad

Created: 9/20/2013 11:00:41 AM
 Modified: 9/20/2013 11:41:36 AM

Electropherogram Summary Continued ...



Overall Results for sample 6 : Library No. 78 repeat run

Number of peaks found: 14 Corr. Area 1: 8,946.3
 Noise: 0.2

Peak table for sample 6 : Library No. 78 repeat run

Peak	Size [bp]	Conc. [pg/μl]	Molarity [pmol/l]	Observations
1	35	125.00	5,411.3	Lower Marker
2	361	2,390.54	10,025.1	
3	369	5,974.54	24,502.6	
4	1,637	2.32	2.1	
5	1,791	2.72	2.3	
6	1,917	4.10	3.2	
7	3,621	31.86	13.3	
8	4,725	29.60	9.5	
9	5,381	13.49	3.8	
10	5,934	13.98	3.6	
11	6,313	24.21	5.8	
12	7,326	10.57	2.2	
13	10,380	75.00	10.9	Upper Marker
14	12,430	0.00	0.0	
15	13,595	0.00	0.0	
16	14,881	0.00	0.0	

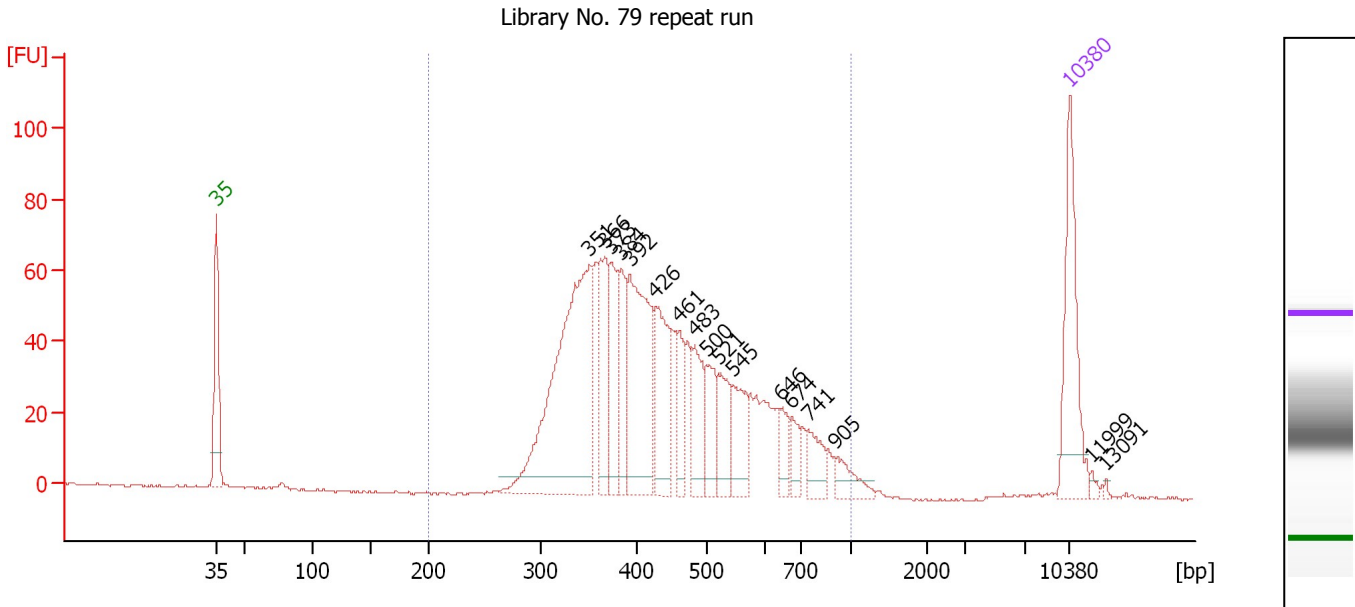
Region table for sample 6 : Library No. 78 repeat run

From [bp]	To [bp]	Average Size [bp]	Molarity [pmol/l]	Conc. [pg/μl]	Corr. Area	% of Total	Size distribution in CV [%]	Color
200	1,000	439	28,690.8	7,739.95	8,946.3	96	26.1	Blue

Assay Class: High Sensitivity DNA Assay
 Data Path: C:\...ents and Settings\Bioanalyzer\2013-09-20\2013-09-20_003.xad

Created: 9/20/2013 11:00:41 AM
 Modified: 9/20/2013 11:41:36 AM

Electropherogram Summary Continued ...



Overall Results for sample 7 : Library No. 79 repeat run

Number of peaks found: 17 Corr. Area 1: 1,267.5
 Noise: 0.4

Peak table for sample 7 : Library No. 79 repeat run

Peak	Size [bp]	Conc. [pg/μl]	Molarity [pmol/l]	Observations
1	35	125.00	5,411.3	Lower Marker
2	351	316.57	1,367.0	
3	366	78.74	325.8	
4	373	68.20	276.8	
5	384	53.75	212.2	
6	392	154.06	594.8	
7	426	89.61	318.3	
8	461	35.57	116.8	
9	483	53.19	166.8	
10	500	42.31	128.2	
11	521	39.74	115.5	
12	545	46.27	128.7	
13	646	20.18	47.3	
14	674	17.99	40.4	
15	741	27.57	56.3	
16	905	20.12	33.7	
17	10,380	75.00	10.9	Upper Marker
18	11,999	0.00	0.0	
19	13,091	0.00	0.0	

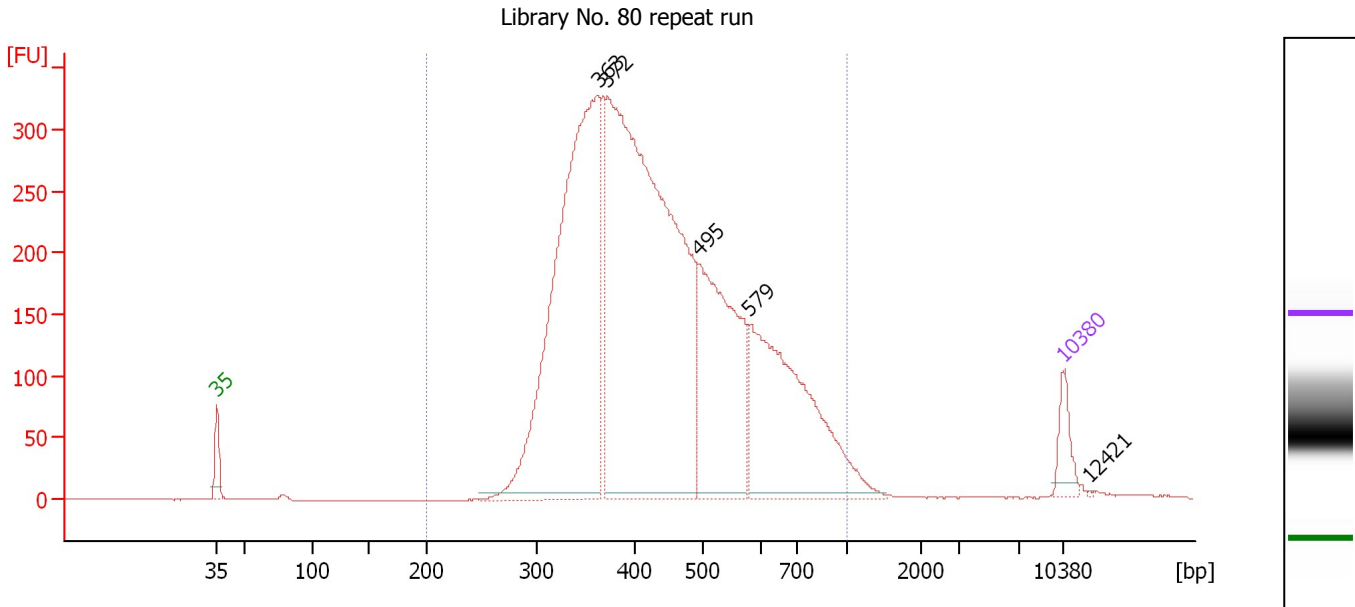
Region table for sample 7 : Library No. 79 repeat run

From [bp]	To [bp]	Average Size [bp]	Molarity [pmol/l]	Conc. [pg/μl]	Corr. Area	% of Total	Size distribution in CV [%]	Color
200	1,000	454	4,459.7	1,220.26	1,267.5	98	29.0	Blue

Assay Class: High Sensitivity DNA Assay
 Data Path: C:\...ents and Settings\Bioanalyzer\2013-09-20\2013-09-20_003.xad

Created: 9/20/2013 11:00:41 AM
 Modified: 9/20/2013 11:41:36 AM

Electropherogram Summary Continued ...



Overall Results for sample 8 : Library No. 80 repeat run

Number of peaks found: 5 Corr. Area 1: 6,407.4
 Noise: 0.2

Peak table for sample 8 : Library No. 80 repeat run

Peak	Size [bp]	Conc. [pg/μl]	Molarity [pmol/l]	Observations
1	35	125.00	5,411.3	Lower Marker
2	363	2,099.60	8,775.1	
3	372	2,942.98	11,989.8	
4	495	875.71	2,678.0	
5	579	927.96	2,426.6	
6	10,380	75.00	10.9	Upper Marker
7	12,421	0.00	0.0	

Region table for sample 8 : Library No. 80 repeat run

From [bp]	To [bp]	Average Size [bp]	Molarity [pmol/l]	Conc. [pg/μl]	Corr. Area	% of Total	Size distribution in CV [%]	Color
200	1,000	454	24,950.0	6,830.11	6,407.4	99	29.0	Blue

Assay Class: High Sensitivity DNA Assay
Data Path: C:\...ents and Settings\Bioanalyzer\2013-09-20\2013-09-20_003.xad

Created: 9/20/2013 11:00:41 AM
Modified: 9/20/2013 11:41:36 AM

Gel Image

