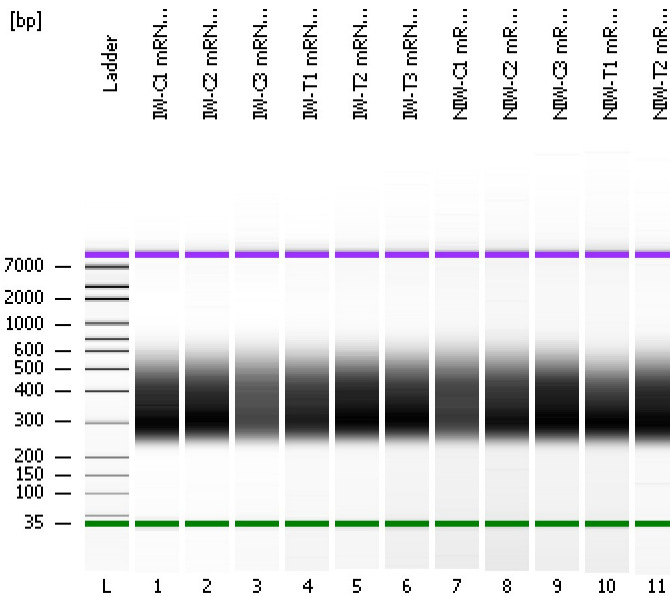


Assay Class: High Sensitivity DNA Assay
Data Path: C:\...ents and Settings\Bioanalyzer\2013-09-23\2013-09-23_003.xad

Created: 9/23/2013 4:58:41 PM
Modified: 9/23/2013 5:41:20 PM

Electrophoresis File Run Summary



Instrument Information:

Instrument Name: DE13701086 Firmware: C.01.069
Serial#: DE13701086 Type: G2938B

Assay Information:

Assay Origin Path: C:\Program Files\Agilent\2100 bioanalyzer\2100 expert\assays\dsDNA\High Sensitivity DNA.xsy
Assay Class: High Sensitivity DNA Assay
Version: 1.03
Assay Comments: Copyright © 2003-2010 Agilent Technologies

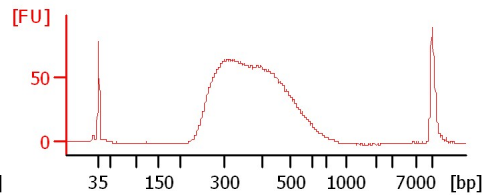
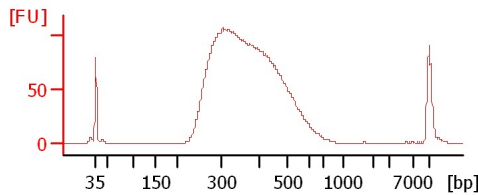
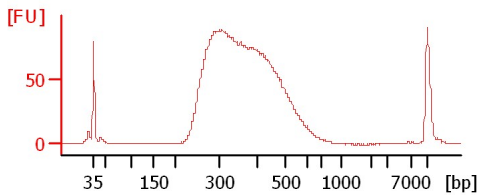
Chip Information:

Chip Lot #:
Reagent Kit Lot #:
Chip Comments:

IW-C1 mRNA Lib

IW-C2 mRNA Lib 1:2

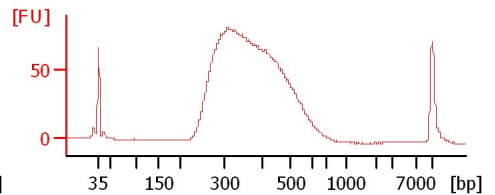
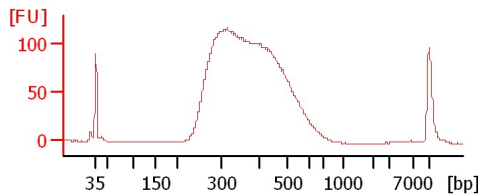
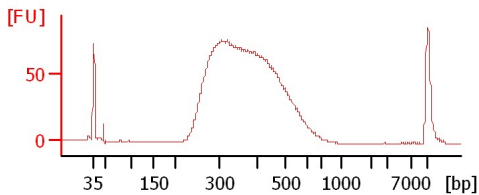
IW-C3 mRNA Lib 1:2



IW-T1 mRNA Lib 1:2

IW-T2 mRNA Lib

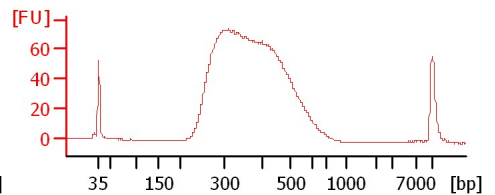
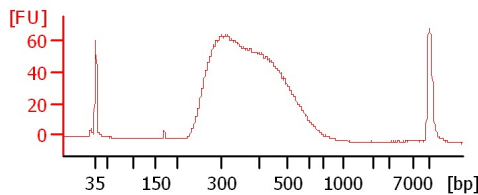
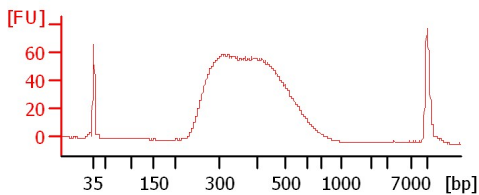
IW-T3 mRNA Lib



NIW-C1 mRNA Lib 1:3

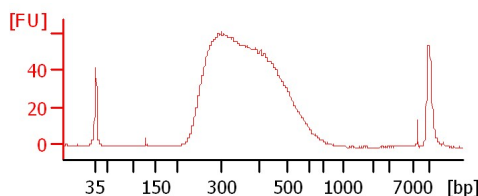
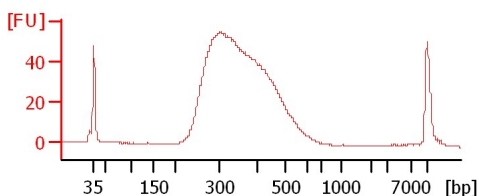
NIW-C2 mRNA Lib 1:2

NIW-C3 mRNA Lib 1:2



NIW-T1 mRNA Lib

NIW-T2 mRNA Lib 1:2



Assay Class: High Sensitivity DNA Assay
 Data Path: C:\...ents and Settings\Bioanalyzer\2013-09-23\2013-09-23_003.xad

Created: 9/23/2013 4:58:41 PM
 Modified: 9/23/2013 5:41:20 PM

Electrophoresis File Run Summary (Chip Summary)

Sample Name	Sample Comment	Rest. Digest	Status	Observation	Result Label	Result Color
IW-C1 mRNA Lib		<input type="checkbox"/>	✓			
IW-C2 mRNA Lib 1:2		<input type="checkbox"/>	✓			
IW-C3 mRNA Lib 1:2		<input type="checkbox"/>	✓			
IW-T1 mRNA Lib 1:2		<input type="checkbox"/>	✓			
IW-T2 mRNA Lib		<input type="checkbox"/>	✓			
IW-T3 mRNA Lib		<input type="checkbox"/>	✓			
NIW-C1 mRNA Lib 1:3		<input type="checkbox"/>	✓			
NIW-C2 mRNA Lib 1:2		<input type="checkbox"/>	✓			
NIW-C3 mRNA Lib 1:2		<input type="checkbox"/>	✓			
NIW-T1 mRNA Lib		<input type="checkbox"/>	✓			
NIW-T2 mRNA Lib 1:2		<input type="checkbox"/>	✓			
Ladder		<input type="checkbox"/>	✓			

Chip Lot #

Reagent Kit Lot #

Chip Comments :

Assay Class: High Sensitivity DNA Assay
Data Path: C:\...ents and Settings\Bioanalyzer\2013-09-23\2013-09-23_003.xad

Created: 9/23/2013 4:58:41 PM
Modified: 9/23/2013 5:41:20 PM

Electrophoresis Assay Details

General Analysis Settings

Number of Available Sample and Ladder Wells (Max.) : 12
Minimum Visible Range [s] : 32
Maximum Visible Range [s] : 138
Start Analysis Time Range [s] : 33
End Analysis Time Range [s] : 137.5
Ladder Concentration [pg/ μ l] : 1950
Uses Standard Area for Ladder Fragments
Lower Marker Concentration [pg/ μ l] : 125
Upper Marker Concentration [pg/ μ l] : 75
Used Upper Marker for Quantitation
Standard Curve Fit is Point to Point
Show Data Aligned to Lower and Upper Marker

Integrator Settings

Integration Start Time [s] : 33.05
Integration End Time [s] : 137
Slope Threshold : 0.8
Height Threshold [FU] : 5
Area Threshold : 0.1
Width Threshold [s] : 0.6
Baseline Plateau [s] : 0.5

Filter Settings

Filter Width [s] : 0.5
Polynomial Order : 4

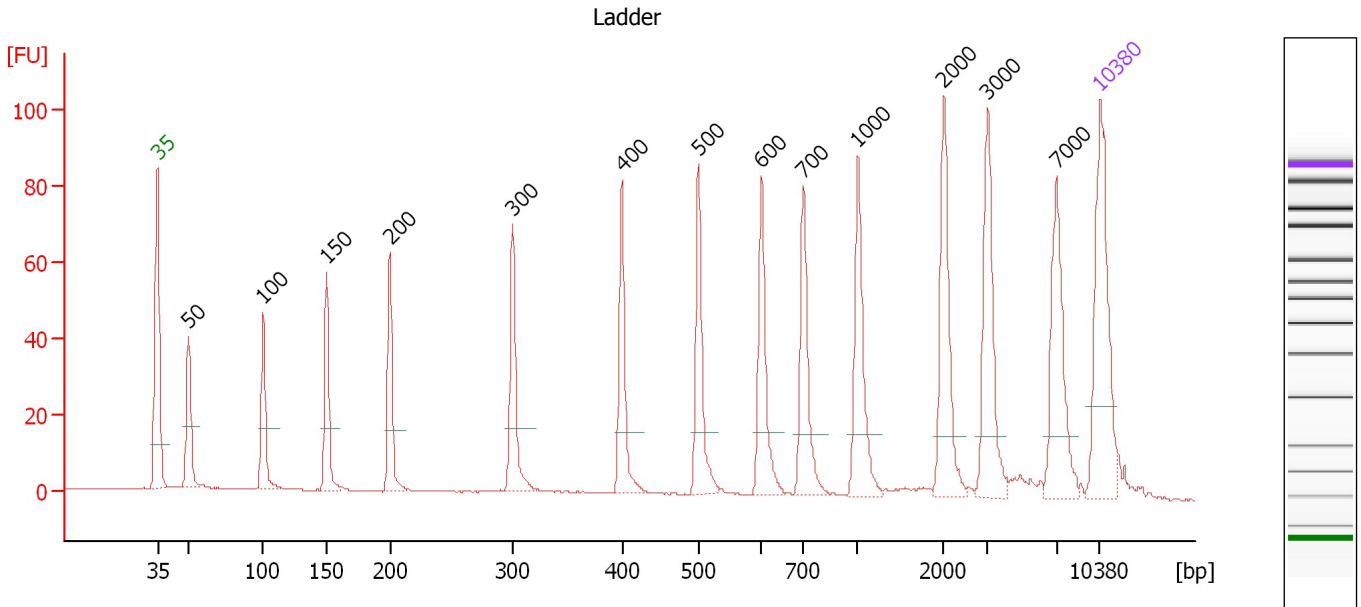
Ladder

Ladder Peak	Size	Area
1	35	160
2	50	210
3	100	208
4	150	221
5	200	242
6	300	270
7	400	305
8	500	306
9	600	336
10	700	321
11	1000	366
12	2000	413
13	3000	411
14	7000	400
15	10380	214

Assay Class: High Sensitivity DNA Assay
 Data Path: C:\...ents and Settings\Bioanalyzer\2013-09-23\2013-09-23_003.xad

Created: 9/23/2013 4:58:41 PM
 Modified: 9/23/2013 5:41:20 PM

Electropherogram Summary



Overall Results for Ladder

Noise: 0.1

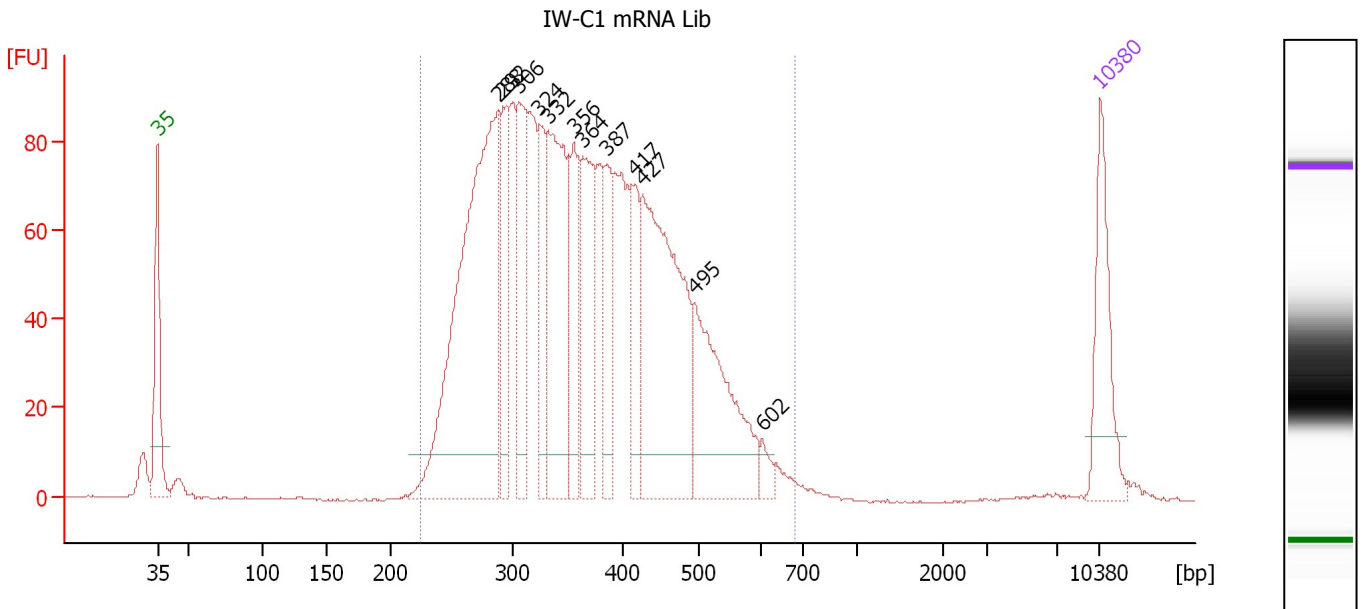
Peak table for Ladder

Peak	Size [bp]	Conc. [pg/µl]	Molarity [pmol/l]	Observations
1	35	125.00	5,411.3	Lower Marker
2	50	150.00	4,545.5	Ladder Peak
3	100	150.00	2,272.7	Ladder Peak
4	150	150.00	1,515.2	Ladder Peak
5	200	150.00	1,136.4	Ladder Peak
6	300	150.00	757.6	Ladder Peak
7	400	150.00	568.2	Ladder Peak
8	500	150.00	454.5	Ladder Peak
9	600	150.00	378.8	Ladder Peak
10	700	150.00	324.7	Ladder Peak
11	1,000	150.00	227.3	Ladder Peak
12	2,000	150.00	113.6	Ladder Peak
13	3,000	150.00	75.8	Ladder Peak
14	7,000	150.00	32.5	Ladder Peak
15	10,380	75.00	10.9	Upper Marker

Assay Class: High Sensitivity DNA Assay
 Data Path: C:\...ents and Settings\Bioanalyzer\2013-09-23\2013-09-23_003.xad

Created: 9/23/2013 4:58:41 PM
 Modified: 9/23/2013 5:41:20 PM

Electropherogram Summary Continued ...



Setpoint Deviations for sample 1 : IW-C1 mRNA Lib

Height Threshold [FU] : 10

Overall Results for sample 1 : IW-C1 mRNA Lib

Number of peaks found: 12 Corr. Area 1: 2,080.4
 Noise: 0.2

Peak table for sample 1 : IW-C1 mRNA Lib

Peak	Size [bp]	Conc. [pg/μl]	Molarity [pmol/l]	Observations
1	35	125.00	5,411.3	Lower Marker
2	288	558.07	2,935.6	
3	292	99.06	514.1	
4	306	133.14	659.3	
5	324	86.89	405.9	
6	332	220.61	1,006.4	
7	356	104.00	442.6	
8	364	121.72	506.1	
9	387	82.51	323.3	
10	417	69.27	251.4	
11	427	320.80	1,138.5	
12	495	189.76	580.9	
13	602	13.60	34.2	
14	10,380	75.00	10.9	Upper Marker

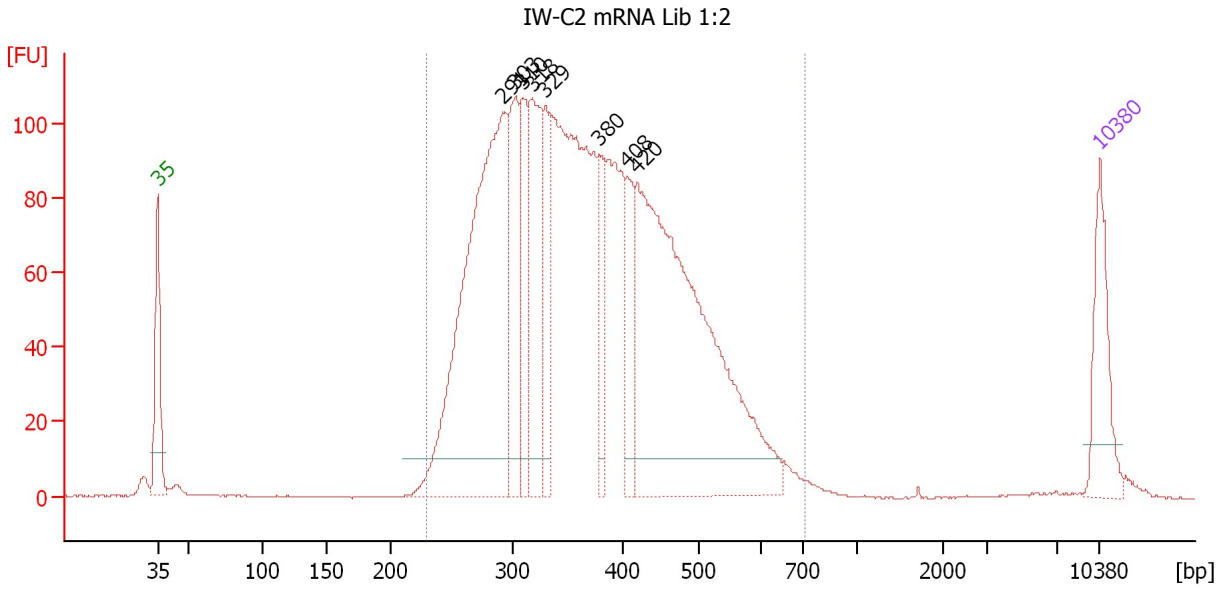
Region table for sample 1 : IW-C1 mRNA Lib

From [bp]	To [bp]	Average Size [bp]	Molarity [pmol/l]	Conc. [pg/μl]	Corr. Area	% of Total	Size distribution in CV [%]	Color
224	679	371	10,996.0	2,495.31	2,080.4	98	23.6	Blue

Assay Class: High Sensitivity DNA Assay
 Data Path: C:\...ents and Settings\Bioanalyzer\2013-09-23\2013-09-23_003.xad

Created: 9/23/2013 4:58:41 PM
 Modified: 9/23/2013 5:41:20 PM

Electropherogram Summary Continued ...



Setpoint Deviations for sample 2 : IW-C2 mRNA Lib 1:2

Height Threshold [FU] : 10

Overall Results for sample 2 : IW-C2 mRNA Lib 1:2

Number of peaks found: 8 Corr. Area 1: 2,481.0
 Noise: 0.1

Peak table for sample 2 : IW-C2 mRNA Lib 1:2

Peak	Size [bp]	Conc. [pg/µl]	Molarity [pmol/l]	Observations
1	35	125.00	5,411.3	Lower Marker
2	291	692.28	3,599.5	
3	303	164.61	824.3	
4	310	111.45	545.0	
5	318	191.76	914.7	
6	329	111.44	512.6	
7	380	81.02	323.3	
8	408	77.19	287.0	
9	420	721.87	2,602.7	
10	10,380	75.00	10.9	Upper Marker

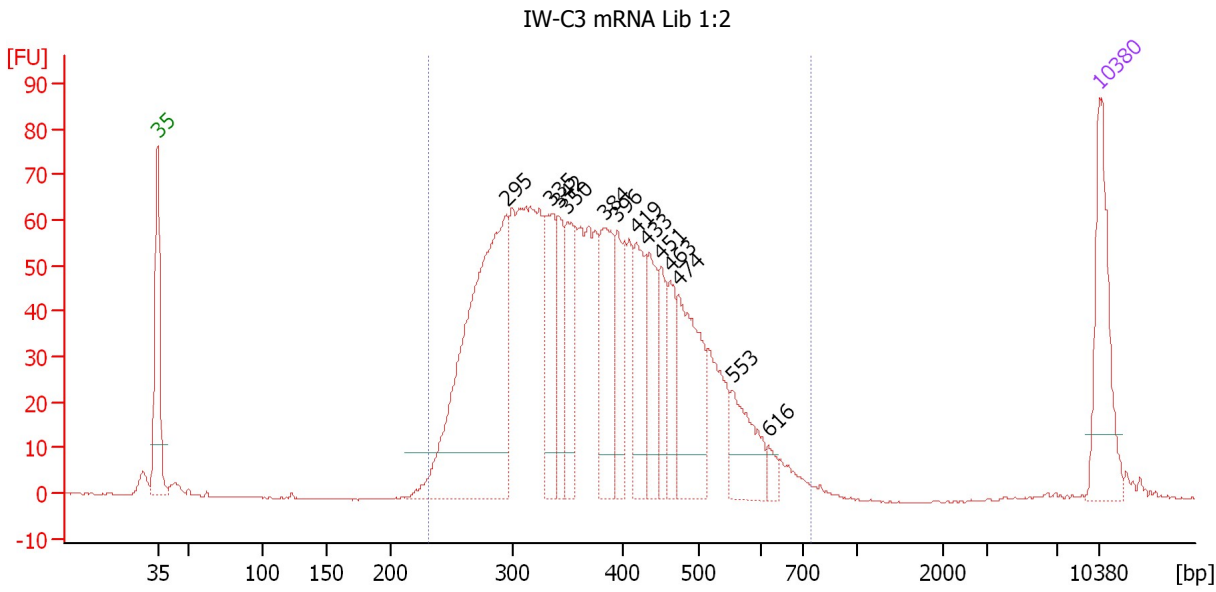
Region table for sample 2 : IW-C2 mRNA Lib 1:2

From [bp]	To [bp]	Average Size [bp]	Molarity [pmol/l]	Conc. [pg/µl]	Corr. Area	% of Total	Size distribution in CV [%]	Color
230	708	376	12,545.0	2,890.54	2,481.0	98	23.9	Blue

Assay Class: High Sensitivity DNA Assay
 Data Path: C:\...ents and Settings\Bioanalyzer\2013-09-23\2013-09-23_003.xad

Created: 9/23/2013 4:58:41 PM
 Modified: 9/23/2013 5:41:20 PM

Electropherogram Summary Continued ...



Setpoint Deviations for sample 3 : IW-C3 mRNA Lib 1:2

Height Threshold [FU] : 10

Overall Results for sample 3 : IW-C3 mRNA Lib 1:2

Number of peaks found: 13 Corr. Area 1: 1,558.6
 Noise: 0.1

Peak table for sample 3 : IW-C3 mRNA Lib 1:2

Peak	Size [bp]	Conc. [pg/μl]	Molarity [pmol/l]	Observations
1	35	125.00	5,411.3	Lower Marker
2	295	422.77	2,171.6	
3	335	94.49	427.6	
4	342	62.67	277.4	
5	350	78.95	341.5	
6	384	100.97	398.5	
7	396	67.75	259.3	
8	419	74.49	269.2	
9	433	66.71	233.4	
10	451	42.51	142.9	
11	463	45.88	150.1	
12	474	121.67	389.3	
13	553	62.25	170.4	
14	616	10.99	27.1	
15	10,380	75.00	10.9	Upper Marker

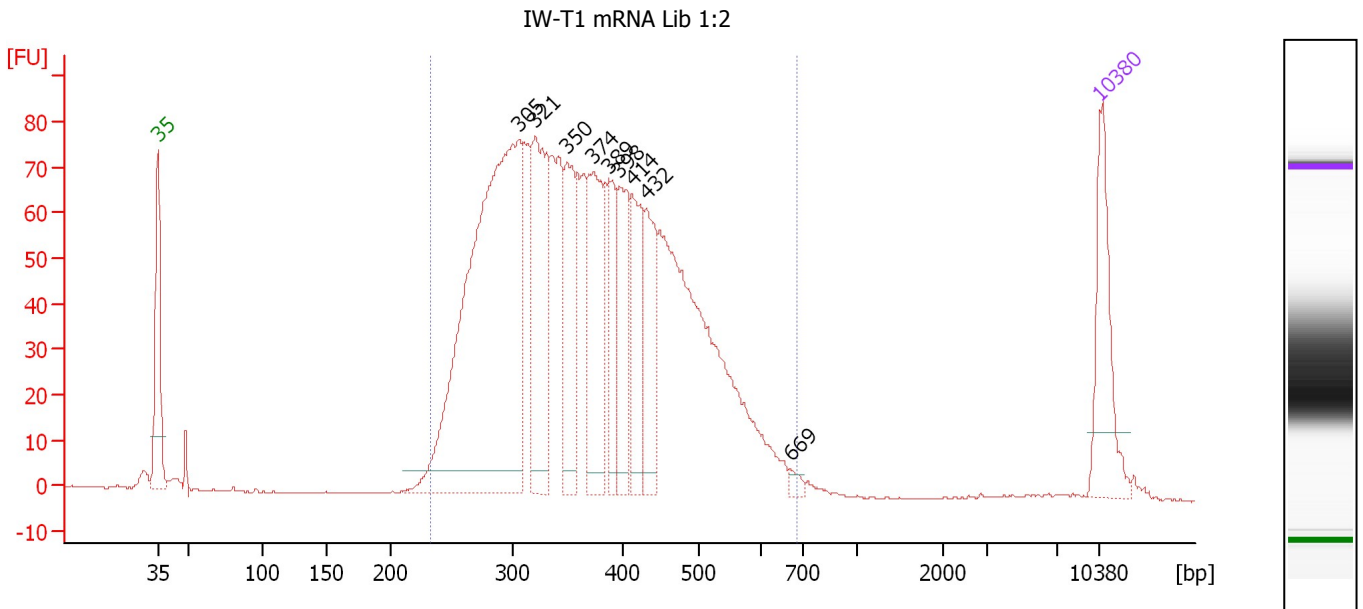
Region table for sample 3 : IW-C3 mRNA Lib 1:2

From [bp]	To [bp]	Average Size [bp]	Molarity [pmol/l]	Conc. [pg/μl]	Corr. Area	% of Total	Size distribution in CV [%]	Color
232	736	383	8,002.2	1,869.76	1,558.6	98	24.3	Blue

Assay Class: High Sensitivity DNA Assay
 Data Path: C:\...ents and Settings\Bioanalyzer\2013-09-23\2013-09-23_003.xad

Created: 9/23/2013 4:58:41 PM
 Modified: 9/23/2013 5:41:20 PM

Electropherogram Summary Continued ...



Overall Results for sample 4 : IW-T1 mRNA Lib 1:2

Number of peaks found: 9 Corr. Area 1: 1,821.0
 Noise: 0.1

Peak table for sample 4 : IW-T1 mRNA Lib 1:2

Peak	Size [bp]	Conc. [pg/μl]	Molarity [pmol/l]	Observations
1	35	125.00	5,411.3	Lower Marker
2	305	652.17	3,237.9	
3	321	195.46	922.8	
4	350	114.65	496.1	
5	374	142.23	576.2	
6	389	65.13	253.9	
7	398	95.93	365.2	
8	414	95.59	350.1	
9	432	93.12	326.7	
10	669	6.58	14.9	
11	10,380	75.00	10.9	Upper Marker

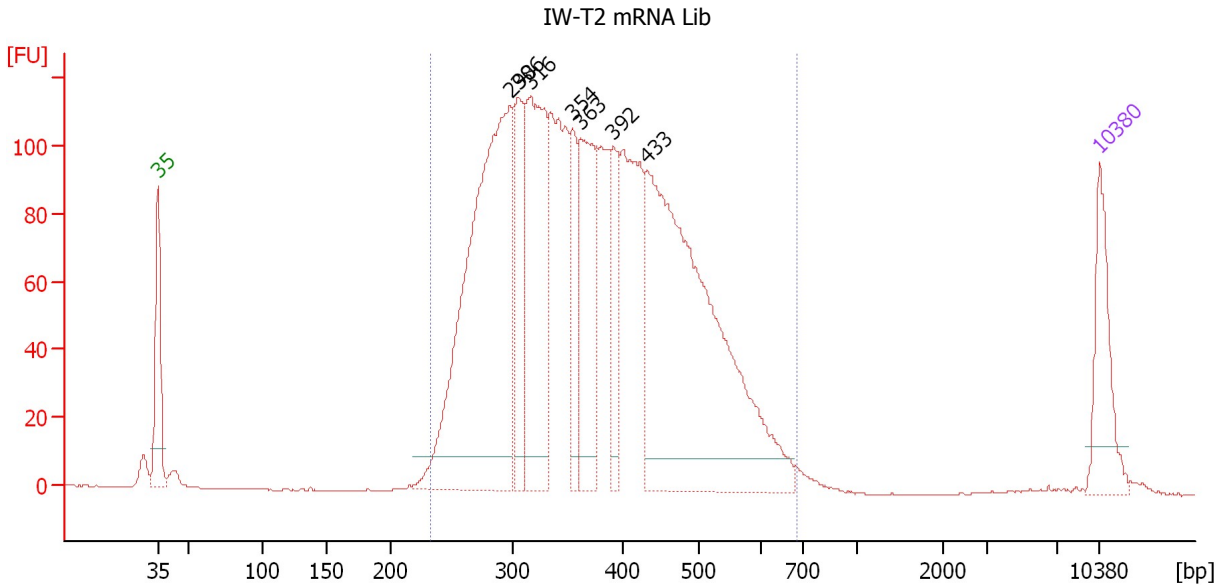
Region table for sample 4 : IW-T1 mRNA Lib 1:2

From [bp]	To [bp]	Average Size [bp]	Molarity [pmol/l]	Conc. [pg/μl]	Corr. Area	% of Total	Size distribution in CV [%]	Color
232	686	378	9,665.2	2,239.36	1,821.0	98	23.6	Blue

Assay Class: High Sensitivity DNA Assay
 Data Path: C:\...ents and Settings\Bioanalyzer\2013-09-23\2013-09-23_003.xad

Created: 9/23/2013 4:58:41 PM
 Modified: 9/23/2013 5:41:20 PM

Electropherogram Summary Continued ...



Setpoint Deviations for sample 5 : IW-T2 mRNA Lib

Height Threshold [FU] : 10

Overall Results for sample 5 : IW-T2 mRNA Lib

Number of peaks found: 7 Corr. Area 1: 2,722.3
 Noise: 0.1

Peak table for sample 5 : IW-T2 mRNA Lib

Peak	Size [bp]	Conc. [pg/μl]	Molarity [pmol/l]	Observations
1	35	125.00	5,411.3	Lower Marker
2	298	705.12	3,590.7	
3	306	141.48	701.6	
4	316	307.31	1,475.3	
5	354	93.80	401.2	
6	363	193.40	808.3	
7	392	95.16	368.2	
8	433	702.63	2,460.1	
9	10,380	75.00	10.9	Upper Marker

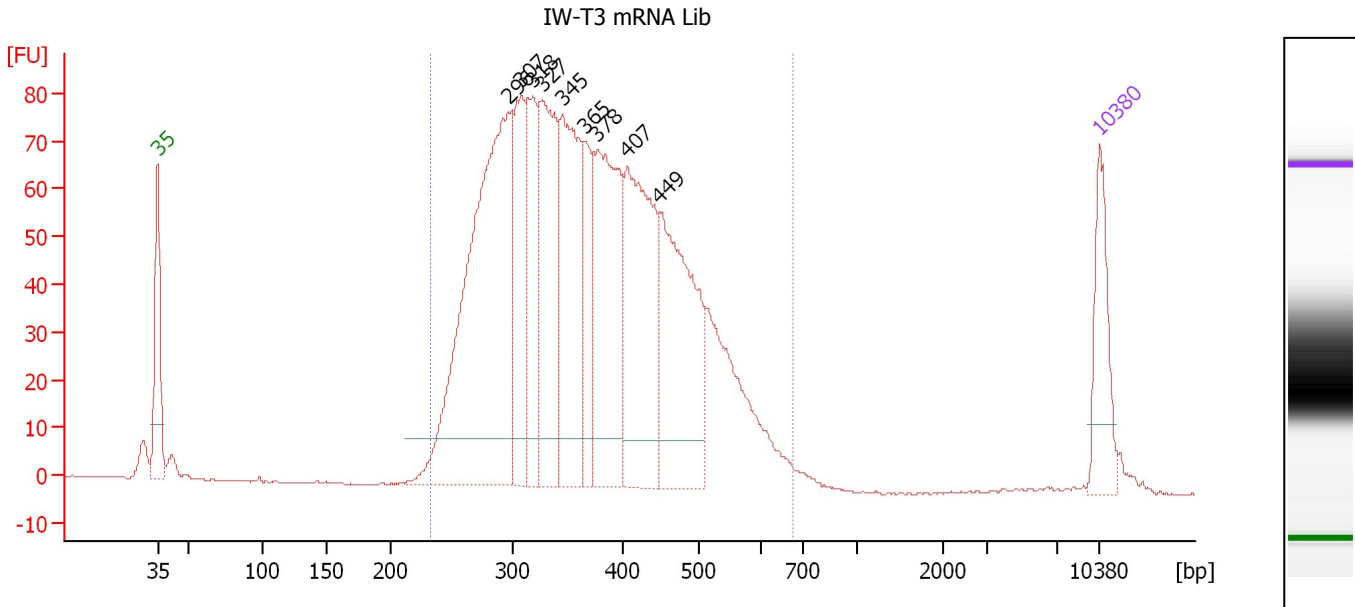
Region table for sample 5 : IW-T2 mRNA Lib

From [bp]	To [bp]	Average Size [bp]	Molarity [pmol/l]	Conc. [pg/μl]	Corr. Area	% of Total	Size distribution in CV [%]	Color
234	682	381	12,285.3	2,864.57	2,722.3	97	23.7	Blue

Assay Class: High Sensitivity DNA Assay
 Data Path: C:\...ents and Settings\Bioanalyzer\2013-09-23\2013-09-23_003.xad

Created: 9/23/2013 4:58:41 PM
 Modified: 9/23/2013 5:41:20 PM

Electropherogram Summary Continued ...



Setpoint Deviations for sample 6 : IW-T3 mRNA Lib

Height Threshold [FU] : 10

Overall Results for sample 6 : IW-T3 mRNA Lib

Number of peaks found: 9 Corr. Area 1: 1,816.5
 Noise: 0.1

Peak table for sample 6 : IW-T3 mRNA Lib

Peak	Size [bp]	Conc. [pg/μl]	Molarity [pmol/l]	Observations
1	35	125.00	5,411.3	Lower Marker
2	296	714.43	3,658.8	
3	307	172.97	852.6	
4	318	160.48	764.1	
5	327	264.07	1,224.9	
6	345	278.93	1,223.9	
7	365	119.74	496.8	
8	378	294.65	1,181.6	
9	407	307.24	1,143.8	
10	449	297.39	1,003.7	
11	10,380	75.00	10.9	Upper Marker

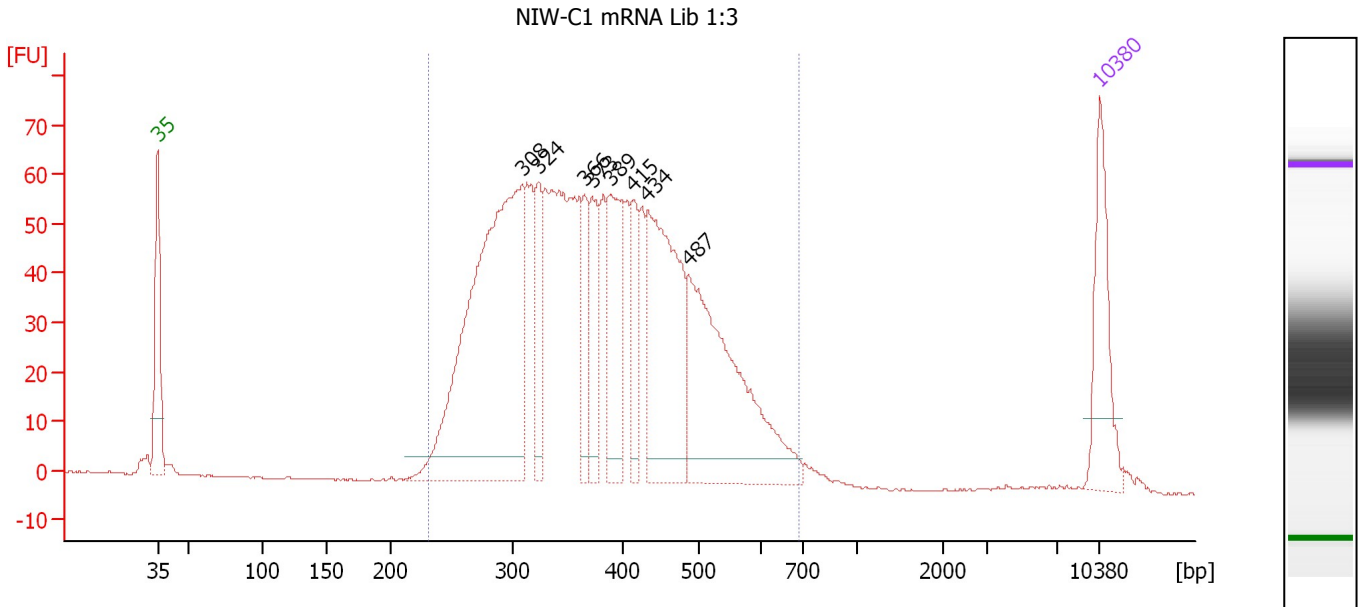
Region table for sample 6 : IW-T3 mRNA Lib

From [bp]	To [bp]	Average Size [bp]	Molarity [pmol/l]	Conc. [pg/μl]	Corr. Area	% of Total	Size distribution in CV [%]	Color
233	673	378	12,080.5	2,800.12	1,816.5	97	23.3	Blue

Assay Class: High Sensitivity DNA Assay
 Data Path: C:\...ents and Settings\Bioanalyzer\2013-09-23\2013-09-23_003.xad

Created: 9/23/2013 4:58:41 PM
 Modified: 9/23/2013 5:41:20 PM

Electropherogram Summary Continued ...



Overall Results for sample 7 : NIW-C1 mRNA Lib 1:3

Number of peaks found: 8 Corr. Area 1: 1,493.2
 Noise: 0.1

Peak table for sample 7 : NIW-C1 mRNA Lib 1:3

Peak	Size [bp]	Conc. [pg/μl]	Molarity [pmol/l]	Observations
1	35	125.00	5,411.3	Lower Marker
2	308	571.18	2,807.7	
3	324	77.18	361.4	
4	366	67.35	278.9	
5	373	75.82	308.3	
6	389	118.39	460.8	
7	415	60.83	222.0	
8	434	241.67	844.6	
9	487	290.03	902.8	
10	10,380	75.00	10.9	Upper Marker

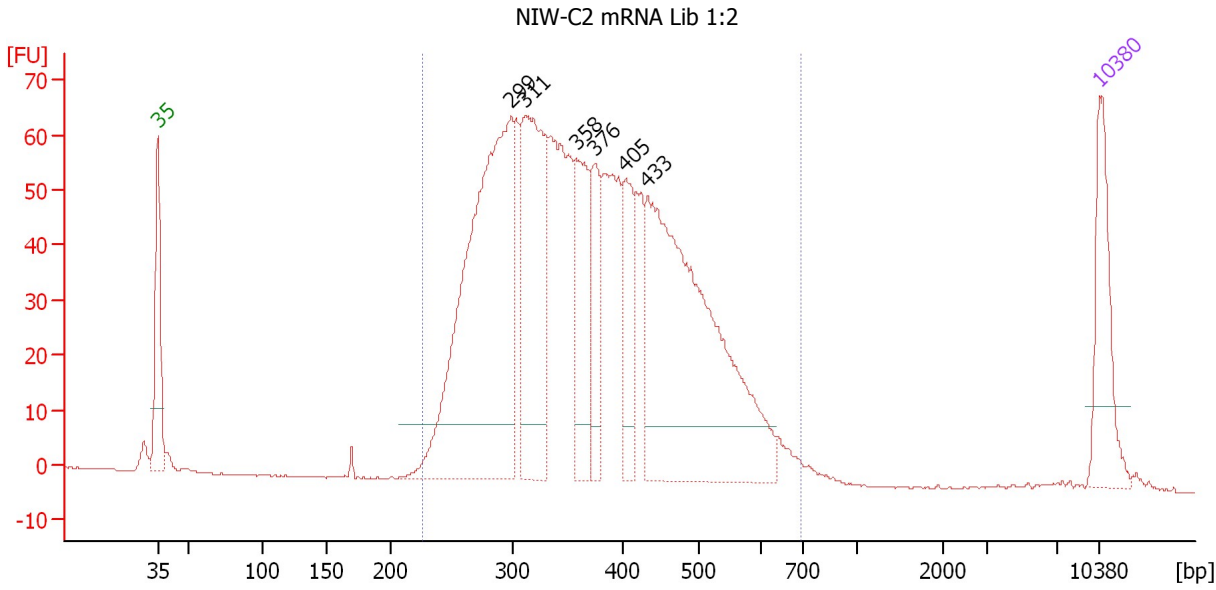
Region table for sample 7 : NIW-C1 mRNA Lib 1:3

From [bp]	To [bp]	Average Size [bp]	Molarity [pmol/l]	Conc. [pg/μl]	Corr. Area	% of Total	Size distribution in CV [%]	Color
231	690	388	8,730.3	2,066.90	1,493.2	97	24.2	Blue

Assay Class: High Sensitivity DNA Assay
 Data Path: C:\...ents and Settings\Bioanalyzer\2013-09-23\2013-09-23_003.xad

Created: 9/23/2013 4:58:41 PM
 Modified: 9/23/2013 5:41:20 PM

Electropherogram Summary Continued ...



Setpoint Deviations for sample 8 : NIW-C2 mRNA Lib 1:2

Height Threshold [FU] : 10

Overall Results for sample 8 : NIW-C2 mRNA Lib 1:2

Number of peaks found: 6 Corr. Area 1: 1,503.2
 Noise: 0.1

Peak table for sample 8 : NIW-C2 mRNA Lib 1:2

Peak	Size [bp]	Conc. [pg/μl]	Molarity [pmol/l]	Observations
1	35	125.00	5,411.3	Lower Marker
2	299	578.33	2,935.3	
3	311	273.30	1,329.7	
4	358	117.57	497.4	
5	376	90.07	363.4	
6	405	85.35	319.2	
7	433	509.52	1,781.0	
8	10,380	75.00	10.9	Upper Marker

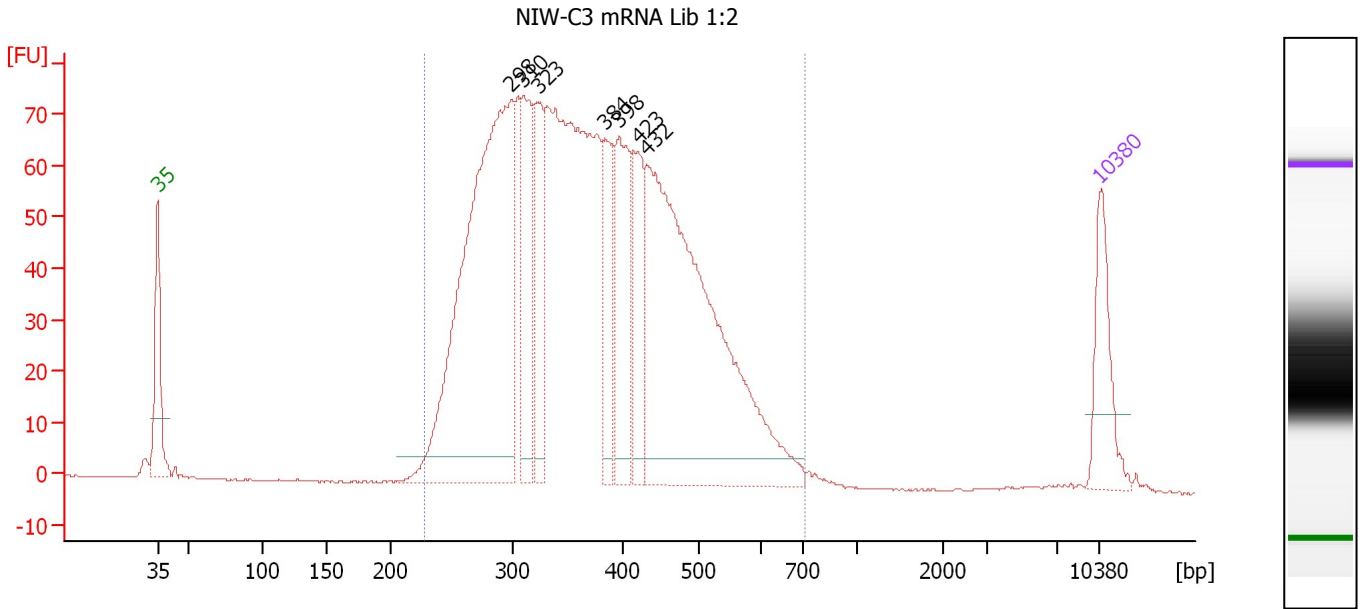
Region table for sample 8 : NIW-C2 mRNA Lib 1:2

From [bp]	To [bp]	Average Size [bp]	Molarity [pmol/l]	Conc. [pg/μl]	Corr. Area	% of Total	Size distribution in CV [%]	Color
227	695	380	9,491.0	2,199.10	1,503.2	98	24.3	Blue

Assay Class: High Sensitivity DNA Assay
 Data Path: C:\...ents and Settings\Bioanalyzer\2013-09-23\2013-09-23_003.xad

Created: 9/23/2013 4:58:41 PM
 Modified: 9/23/2013 5:41:20 PM

Electropherogram Summary Continued ...



Overall Results for sample 9 : NIW-C3 mRNA Lib 1:2

Number of peaks found: 7 Corr. Area 1: 1,762.7
 Noise: 0.1

Peak table for sample 9 : NIW-C3 mRNA Lib 1:2

Peak	Size [bp]	Conc. [pg/μl]	Molarity [pmol/l]	Observations
1	35	125.00	5,411.3	Lower Marker
2	298	802.24	4,078.4	
3	310	164.96	806.8	
4	323	139.48	654.2	
5	384	124.17	489.5	
6	398	168.88	643.6	
7	423	106.48	381.8	
8	432	726.64	2,551.1	
9	10,380	75.00	10.9	Upper Marker

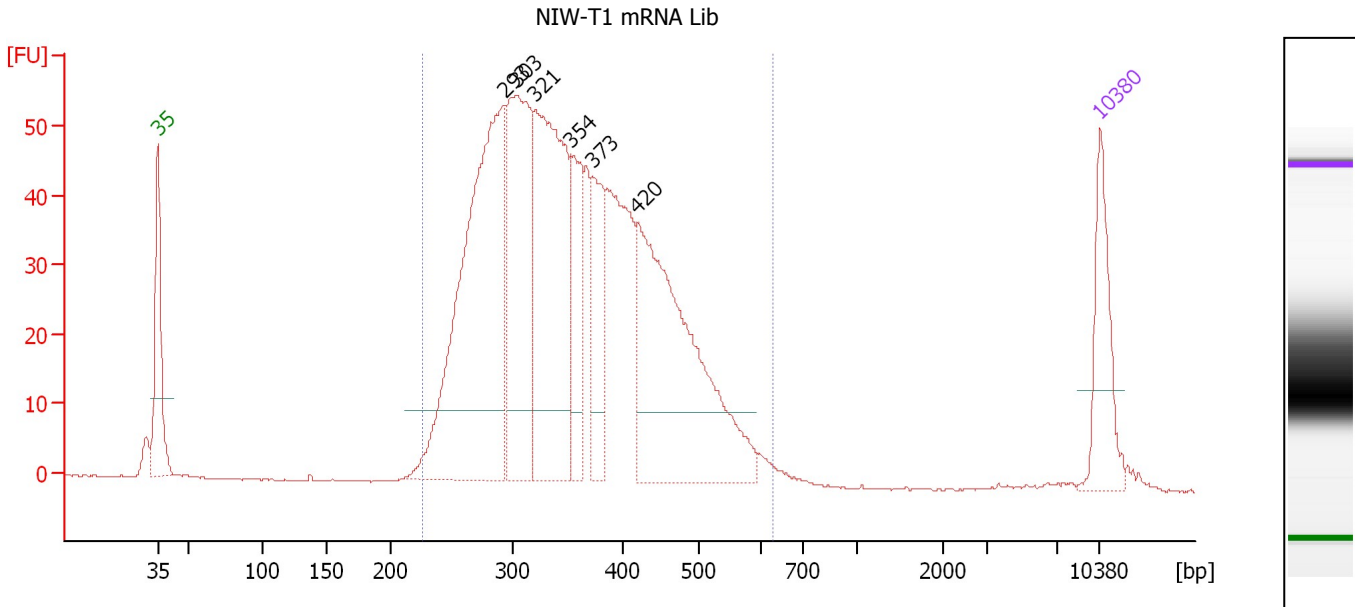
Region table for sample 9 : NIW-C3 mRNA Lib 1:2

From [bp]	To [bp]	Average Size [bp]	Molarity [pmol/l]	Conc. [pg/μl]	Corr. Area	% of Total	Size distribution in CV [%]	Color
227	706	379	13,251.0	3,070.30	1,762.7	98	24.1	Blue

Assay Class: High Sensitivity DNA Assay
 Data Path: C:\...ents and Settings\Bioanalyzer\2013-09-23\2013-09-23_003.xad

Created: 9/23/2013 4:58:41 PM
 Modified: 9/23/2013 5:41:20 PM

Electropherogram Summary Continued ...



Setpoint Deviations for sample 10 : NIW-T1 mRNA Lib

Height Threshold [FU] : 10

Overall Results for sample 10 : NIW-T1 mRNA Lib

Number of peaks found: 6 Corr. Area 1: 1,108.7
 Noise: 0.1

Peak table for sample 10 : NIW-T1 mRNA Lib

Peak	Size [bp]	Conc. [pg/μl]	Molarity [pmol/l]	Observations
1	35	125.00	5,411.3	Lower Marker
2	293	573.10	2,964.9	
3	303	295.26	1,477.4	
4	321	386.31	1,825.4	
5	354	110.78	474.4	
6	373	99.06	402.5	
7	420	412.35	1,486.0	
8	10,380	75.00	10.9	Upper Marker

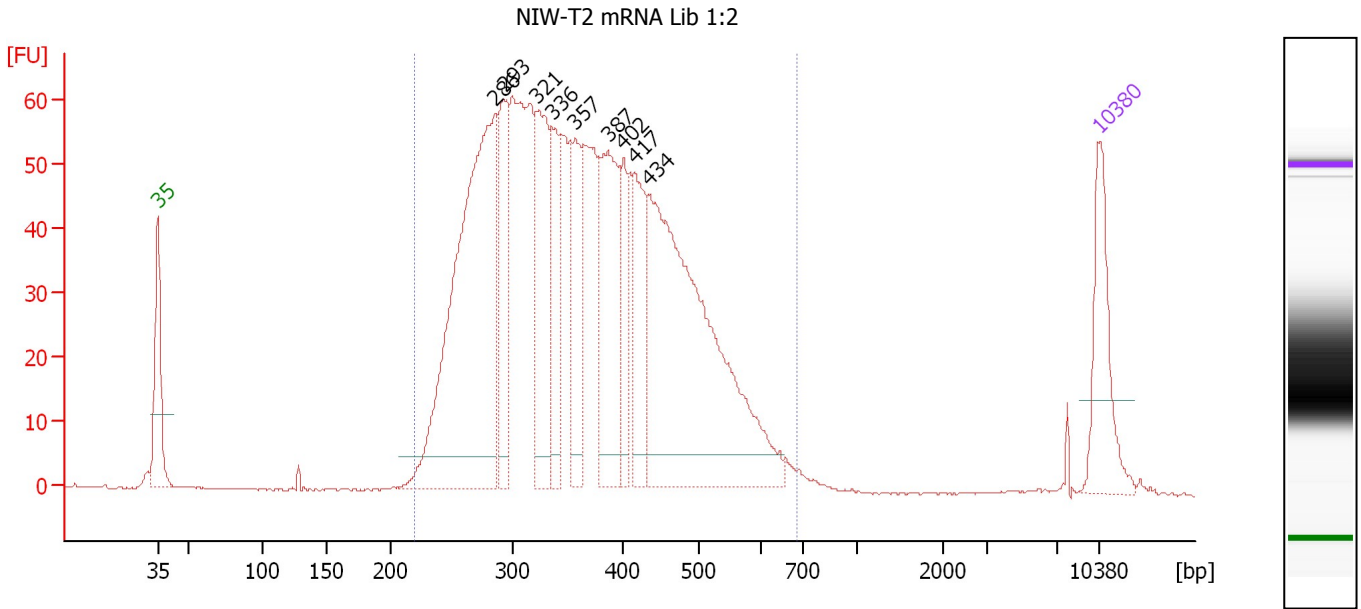
Region table for sample 10 : NIW-T1 mRNA Lib

From [bp]	To [bp]	Average Size [bp]	Molarity [pmol/l]	Conc. [pg/μl]	Corr. Area	% of Total	Size distribution in CV [%]	Color
226	627	360	9,955.9	2,222.72	1,108.7	98	22.0	Blue

Assay Class: High Sensitivity DNA Assay
 Data Path: C:\...ents and Settings\Bioanalyzer\2013-09-23\2013-09-23_003.xad

Created: 9/23/2013 4:58:41 PM
 Modified: 9/23/2013 5:41:20 PM

Electropherogram Summary Continued ...



Overall Results for sample 11 : NIW-T2 mRNA Lib 1:2

Number of peaks found: 9 Corr. Area 1: 1,390.5
 Noise: 0.1

Peak table for sample 11 : NIW-T2 mRNA Lib 1:2

Peak	Size [bp]	Conc. [pg/μl]	Molarity [pmol/l]	Observations
1	35	125.00	5,411.3	Lower Marker
2	286	552.66	2,931.0	
3	293	125.14	648.1	
4	321	165.43	780.4	
5	336	91.10	410.9	
6	357	109.90	467.0	
7	387	166.95	652.9	
8	402	70.72	266.4	
9	417	107.33	390.1	
10	434	498.14	1,738.0	
11	10,380	75.00	10.9	Upper Marker

Region table for sample 11 : NIW-T2 mRNA Lib 1:2

From [bp]	To [bp]	Average Size [bp]	Molarity [pmol/l]	Conc. [pg/μl]	Corr. Area	% of Total	Size distribution in CV [%]	Color
220	686	372	11,113.3	2,521.46	1,390.5	98	24.4	Blue

Assay Class: High Sensitivity DNA Assay
Data Path: C:\...ents and Settings\Bioanalyzer\2013-09-23\2013-09-23_003.xad

Created: 9/23/2013 4:58:41 PM
Modified: 9/23/2013 5:41:20 PM

Gel Image

